

Data Path : Z:\voasrv\HPCHEM1\MSVOA_W\Data\VW050422\
 Data File : VW022800.D
 Acq On : 04 May 2022 14:29
 Operator : SY/VA
 Sample : N2632-15RE
 Misc : 7.00g/10mL/MSVOA_W/SOIL
 ALS Vial : 1 Sample Multiplier: 1

Instrument :
 MSVOA_W
 ClientSampleId :
 EW4B7RE

Integration Parameters: LSCINT.P

Integrator: RTE
 Smoothing : OFF
 Sampling : 1
 Start Thrs : 0.2
 Stop Thrs : 0

Filtering: 5
 Min Area: 0 % of largest Peak
 Max Peaks: 100
 Peak Location: TOP

If leading or trailing edge < 100 prefer < Baseline drop else tangent >
 Peak separation: 5

Method : Z:\voasrv\HPCHEM1\MSVOA_W\Method\SFAMWLM050222SMA.M
 Title : SFAM01.0

Signal : TIC: VW022800.D\data.ms

peak #	R.T. min	first scan	max scan	last scan	PK TY	peak height	corr. area	corr. % max.	% of total
1	2.349	69	73	81	rVB	155627	257243	22.60%	3.837%
2	2.885	156	161	172	rVB	90281	192898	16.95%	2.877%
3	3.513	260	264	266	rBV5	1157	1282	0.11%	0.019%
4	3.702	293	295	297	rBV3	742	518	0.05%	0.008%
5	3.794	309	310	313	rBV3	972	1276	0.11%	0.019%
6	4.013	334	346	362	rBV	131547	404651	35.55%	6.035%
7	4.251	383	385	388	rBV4	1172	1040	0.09%	0.016%
8	4.324	395	397	398	rBV2	1067	577	0.05%	0.009%
9	4.550	431	434	435	rBV3	621	511	0.04%	0.008%
10	4.763	467	469	470	rBV2	738	763	0.07%	0.011%
11	4.921	486	495	507	rVB3	15617	53940	4.74%	0.804%
12	5.056	515	517	521	rBV4	617	762	0.07%	0.011%
13	5.110	525	526	527	rBV	1430	608	0.05%	0.009%
14	5.196	538	540	541	rBV2	778	534	0.05%	0.008%
15	5.275	552	553	555	rBV2	1662	1209	0.11%	0.018%
16	5.354	564	566	568	rBV2	870	778	0.07%	0.012%
17	5.373	568	569	571	rBV2	812	556	0.05%	0.008%
18	5.580	602	603	605	rBV	943	751	0.07%	0.011%
19	5.629	609	611	614	rBV3	957	1002	0.09%	0.015%
20	5.696	620	622	623	rVB2	751	501	0.04%	0.007%
21	5.714	623	625	628	rBV3	1077	1169	0.10%	0.017%
22	5.891	653	654	656	rBV2	944	592	0.05%	0.009%
23	6.135	692	694	696	rBV2	644	513	0.05%	0.008%
24	6.293	716	720	721	rBV3	524	585	0.05%	0.009%
25	6.635	774	776	779	rBV3	1027	1289	0.11%	0.019%
26	6.683	779	784	786	rVV5	1380	2419	0.21%	0.036%
27	6.769	797	798	800	rBV2	991	993	0.09%	0.015%
28	6.903	816	820	822	rBV5	1475	2604	0.23%	0.039%
29	7.074	841	848	858	rBV2	36804	101140	8.89%	1.508%
30	7.372	896	897	899	rBV2	907	869	0.08%	0.013%
31	7.433	904	907	908	rBV3	885	824	0.07%	0.012%
32	7.464	911	912	916	rVB4	1177	842	0.07%	0.013%
33	7.506	916	919	920	rBV2	1001	1006	0.09%	0.015%
34	7.537	922	924	925	rBV2	1199	723	0.06%	0.011%
35	7.647	933	942	957	rVB	210789	520374	45.72%	7.761%
36	7.805	966	968	971	rBV4	1037	900	0.08%	0.013%

Data Path : Z:\voasrv\HPCHEM1\MSVOA_W\Data\VW050422\
 Data File : VW022800.D
 Acq On : 04 May 2022 14:29
 Operator : SY/VA
 Sample : N2632-15RE
 Misc : 7.00g/10mL/MSVOA_W/SOIL
 ALS Vial : 1 Sample Multiplier: 1

Instrument :
 MSVOA_W
 ClientSampleId :
 EW4B7RE

Integration Parameters: LSCINT.P

Integrator: RTE
 Smoothing : OFF
 Sampling : 1
 Start Thrs : 0.2
 Stop Thrs : 0

Filtering: 5
 Min Area: 0 % of largest Peak
 Max Peaks: 100
 Peak Location: TOP

If leading or trailing edge < 100 prefer < Baseline drop else tangent >
 Peak separation: 5

Method : Z:\voasrv\HPCHEM1\MSVOA_W\Method\SFAMWLM050222SMA.M
 Title : SFAM01.0

37	7.836	971	973	976	rBV4	948	1154	0.10%	0.017%
38	8.043	1004	1007	1009	rBV3	687	676	0.06%	0.010%
39	8.207	1032	1034	1035	rBV2	657	656	0.06%	0.010%
40	8.275	1035	1045	1060	rVV2	379289	1138264	100.00%	16.976%
41	8.689	1111	1113	1114	rBV	1252	855	0.08%	0.013%
42	8.744	1120	1122	1123	rBV2	784	666	0.06%	0.010%
43	8.842	1130	1138	1149	rVB	337209	669896	58.85%	9.991%
44	9.134	1184	1186	1190	rVB3	1563	1583	0.14%	0.024%
45	9.171	1190	1192	1194	rBV2	887	831	0.07%	0.012%
46	9.274	1200	1209	1218	rBV	262918	531548	46.70%	7.928%
47	9.591	1258	1261	1265	rVB5	1840	2750	0.24%	0.041%
48	9.634	1265	1268	1269	rBV3	689	896	0.08%	0.013%
49	9.890	1306	1310	1315	rVB6	2662	4558	0.40%	0.068%
50	10.036	1327	1334	1341	rBV	115149	206924	18.18%	3.086%
51	10.219	1363	1364	1367	rBV2	1034	710	0.06%	0.011%
52	10.244	1367	1368	1370	rBV2	1117	708	0.06%	0.011%
53	10.323	1374	1381	1388	rBV	448912	789336	69.35%	11.772%
54	10.494	1407	1409	1411	rBV3	874	703	0.06%	0.010%
55	10.579	1416	1423	1432	rBV	64144	113519	9.97%	1.693%
56	10.774	1453	1455	1456	rBV2	1122	674	0.06%	0.010%
57	10.829	1462	1464	1466	rBV3	1362	1392	0.12%	0.021%
58	10.927	1471	1480	1492	rBV	116389	214217	18.82%	3.195%
59	11.250	1531	1533	1535	rBV4	1199	1040	0.09%	0.016%
60	11.317	1542	1544	1547	rBV3	820	1018	0.09%	0.015%
61	11.396	1555	1557	1560	rBV2	1086	1082	0.10%	0.016%
62	11.451	1564	1566	1567	rBV2	924	504	0.04%	0.008%
63	11.518	1575	1577	1579	rBV3	773	580	0.05%	0.009%
64	11.628	1587	1595	1607	rBV	330778	577424	50.73%	8.612%
65	11.792	1619	1622	1624	rBV3	694	794	0.07%	0.012%
66	11.835	1624	1629	1636	rVB8	2617	5170	0.45%	0.077%
67	11.945	1644	1647	1648	rVB3	1089	944	0.08%	0.014%
68	11.999	1652	1656	1658	rVB4	880	1054	0.09%	0.016%
69	12.115	1673	1675	1676	rBV2	969	785	0.07%	0.012%
70	12.134	1676	1678	1680	rVV4	1186	962	0.08%	0.014%
71	12.262	1697	1699	1700	rVB2	1067	553	0.05%	0.008%
72	12.414	1722	1724	1725	rBV2	955	597	0.05%	0.009%
73	12.609	1747	1756	1761	rBV4	5594	14406	1.27%	0.215%
74	12.688	1762	1769	1777	rVV	186276	312494	27.45%	4.661%
75	13.085	1828	1834	1835	rBV4	949	1042	0.09%	0.016%
76	13.164	1843	1847	1849	rBV5	1294	1843	0.16%	0.027%

Data Path : Z:\voasrv\HPCHEM1\MSVOA_W\Data\VW050422\
 Data File : VW022800.D
 Acq On : 04 May 2022 14:29
 Operator : SY/VA
 Sample : N2632-15RE
 Misc : 7.00g/10mL/MSVOA_W/SOIL
 ALS Vial : 1 Sample Multiplier: 1

Instrument :
 MSVOA_W
 ClientSampleId :
 EW4B7RE

Integration Parameters: LSCINT.P

Integrator: RTE
 Smoothing : OFF Filtering: 5
 Sampling : 1 Min Area: 0 % of largest Peak
 Start Thrs: 0.2 Max Peaks: 100
 Stop Thrs : 0 Peak Location: TOP

If leading or trailing edge < 100 prefer < Baseline drop else tangent >
 Peak separation: 5

Method : Z:\voasrv\HPCHEM1\MSVOA_W\Method\SFAMWLM050222SMA.M
 Title : SFAM01.0

77	13.365	1878	1880	1881	rBV2	734	635	0.06%	0.009%
78	13.402	1882	1886	1890	rVB6	2597	4346	0.38%	0.065%
79	13.554	1905	1911	1918	rBV	145791	240243	21.11%	3.583%
80	13.774	1941	1947	1949	rBV5	1301	1648	0.14%	0.025%
81	13.847	1952	1959	1971	rVB	155275	271179	23.82%	4.044%
82	14.066	1991	1995	1999	rBV3	2998	4810	0.42%	0.072%
83	14.200	2015	2017	2019	rVB3	891	659	0.06%	0.010%
84	14.322	2033	2037	2041	rBV5	2284	4136	0.36%	0.062%
85	14.426	2052	2054	2057	rBV3	875	1100	0.10%	0.016%
86	14.462	2057	2060	2062	rBV4	554	543	0.05%	0.008%
87	14.639	2087	2089	2091	rBV3	732	614	0.05%	0.009%
88	14.987	2143	2146	2147	rBV3	765	887	0.08%	0.013%
89	15.133	2169	2170	2173	rBV3	1161	1094	0.10%	0.016%
90	15.176	2175	2177	2178	rBV2	852	716	0.06%	0.011%
91	15.231	2184	2186	2190	rVB5	1090	1483	0.13%	0.022%
92	15.273	2190	2193	2194	rBV3	679	673	0.06%	0.010%
93	15.322	2199	2201	2204	rBV4	1278	1565	0.14%	0.023%
94	15.438	2218	2220	2222	rVB3	918	913	0.08%	0.014%
95	15.657	2253	2256	2257	rBV3	1477	1172	0.10%	0.017%
96	15.944	2301	2303	2306	rVB4	1172	1036	0.09%	0.015%
97	16.316	2362	2364	2367	rBV4	718	524	0.05%	0.008%
98	16.456	2386	2387	2389	rBV2	1109	811	0.07%	0.012%
99	16.547	2400	2402	2403	rBV2	1380	664	0.06%	0.010%
100	16.749	2434	2435	2437	rBV	939	503	0.04%	0.008%

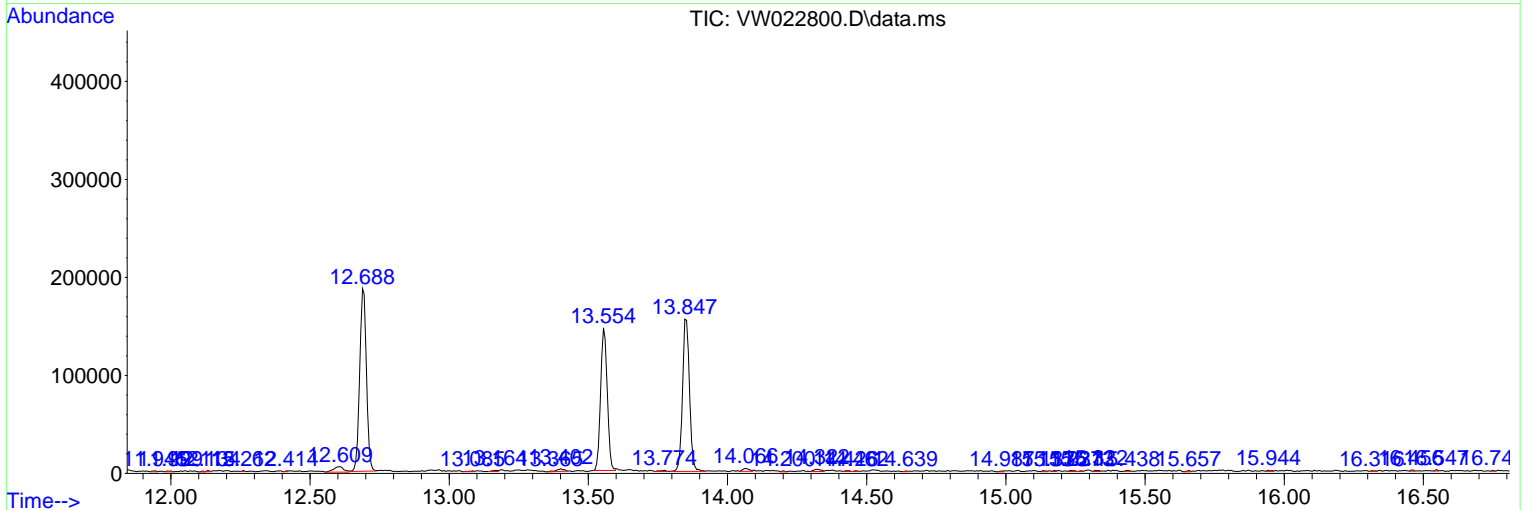
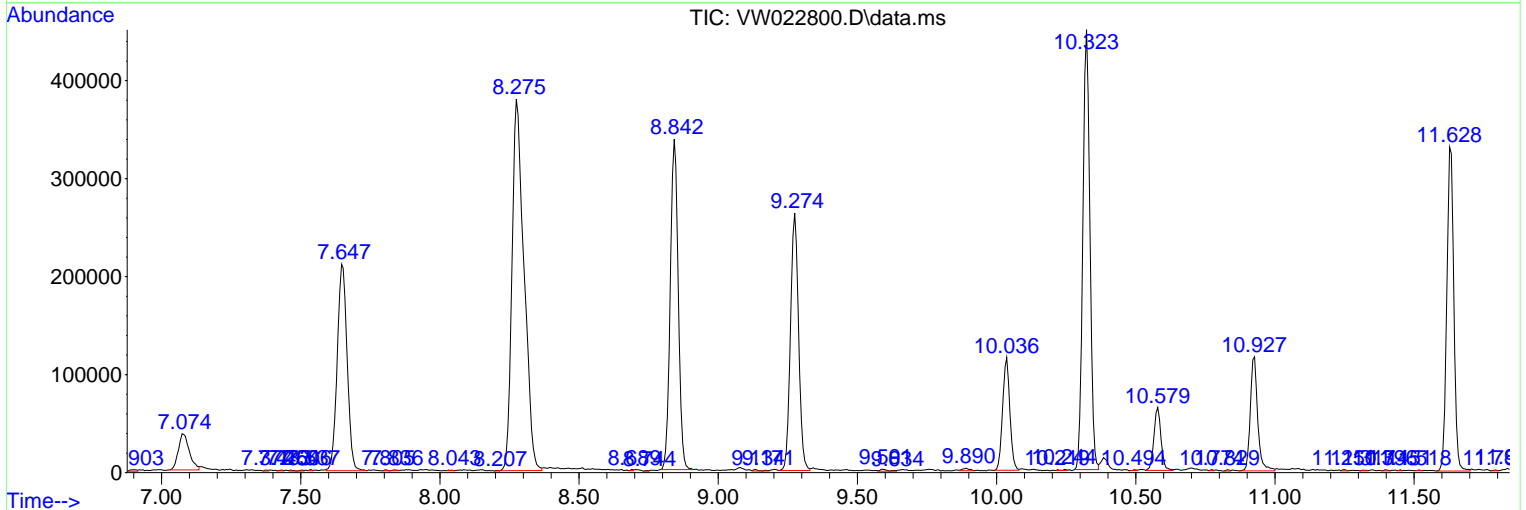
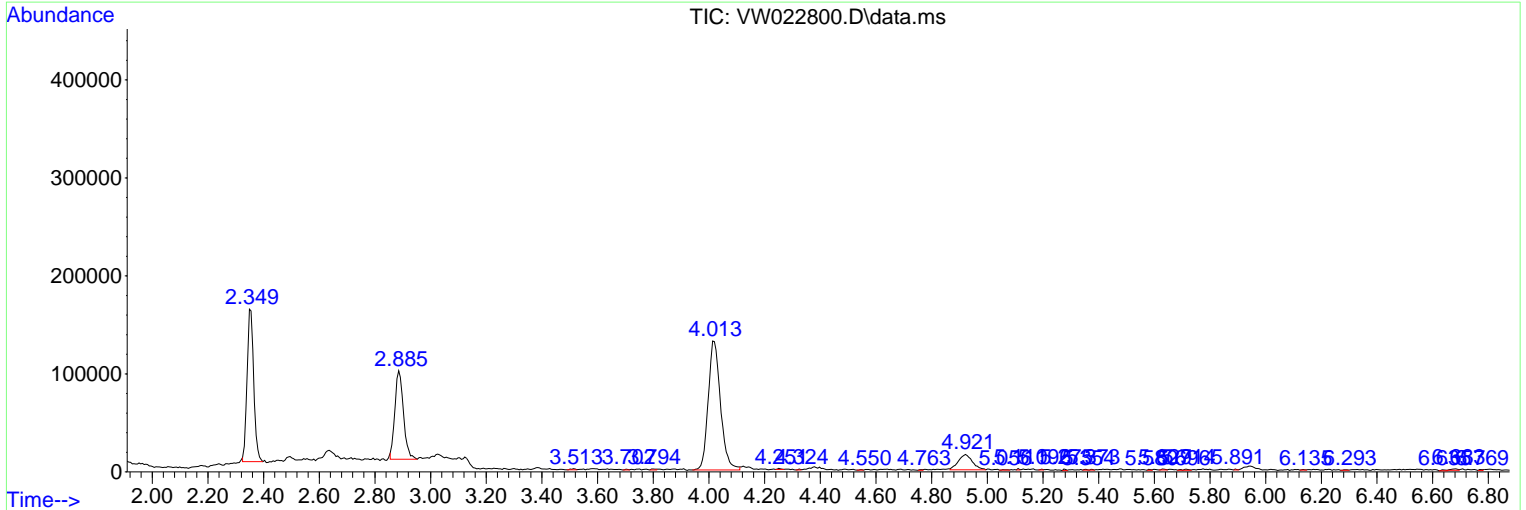
Sum of corrected areas: 6705004

Data Path : Z:\voasrv\HPCHEM1\MSVOA_W\Data\VW050422\
 Data File : VW022800.D
 Acq On : 04 May 2022 14:29
 Operator : SY/VA
 Sample : N2632-15RE
 Misc : 7.00g/10mL/MSVOA_W/SOIL
 ALS Vial : 1 Sample Multiplier: 1

Instrument :
 MSVOA_W
 ClientSampleId :
 EW4B7RE

Quant Method : Z:\voasrv\HPCHEM1\MSVOA_W\Method\SFAMWLM050222SMA.M
 Quant Title : SFAM01.0

TIC Library : C:\Database\NIST20.L
 TIC Integration Parameters: LSCINT.P



Data Path : Z:\voasrv\HPCHEM1\MSVOA_W\Data\VW050422\
 Data File : VW022800.D
 Acq On : 04 May 2022 14:29
 Operator : SY/VA
 Sample : N2632-15RE
 Misc : 7.00g/10mL/MSVOA_W/SOIL
 ALS Vial : 1 Sample Multiplier: 1

Instrument :
 MSVOA_W
 ClientSampleId :
 EW4B7RE

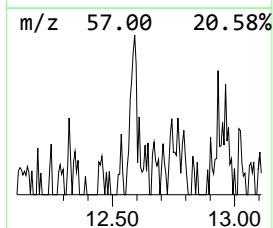
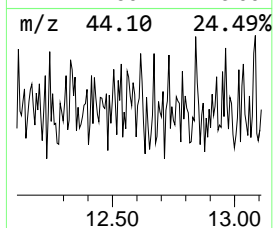
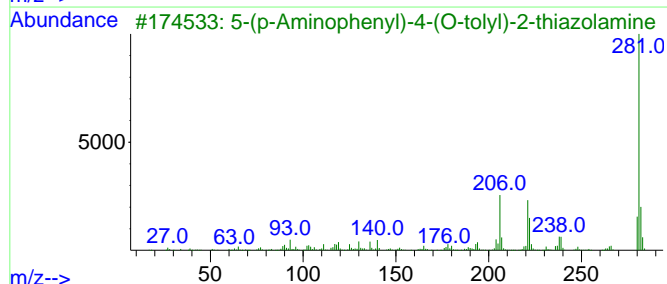
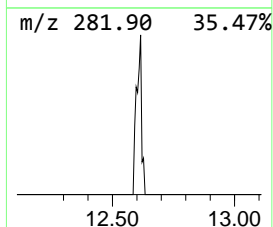
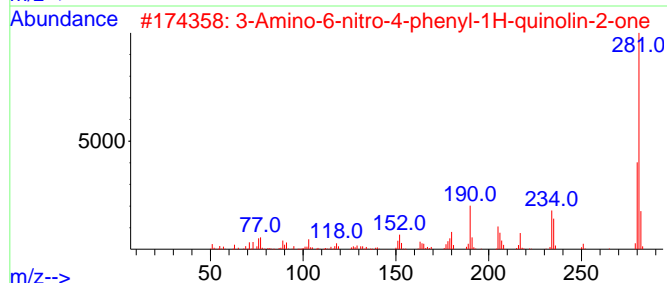
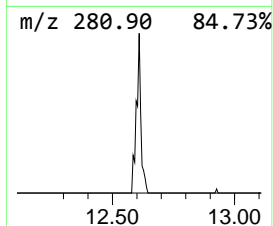
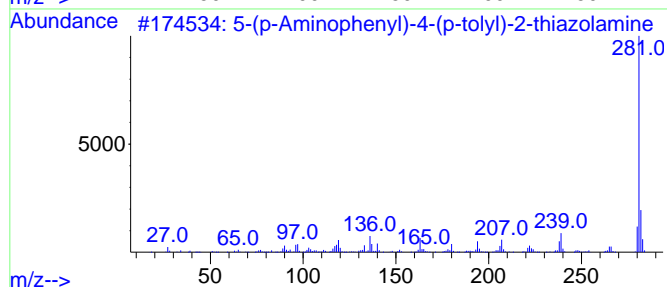
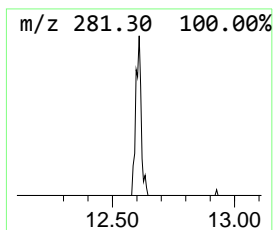
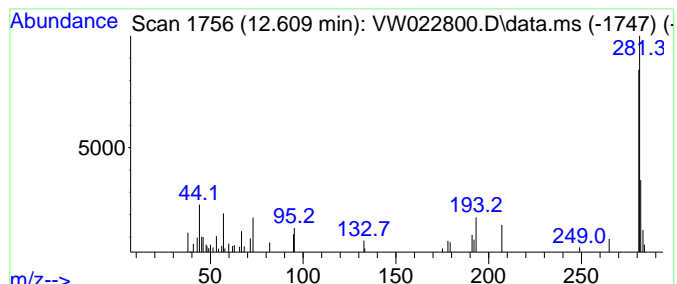
Quant Method : Z:\voasrv\HPCHEM1\MSVOA_W\Method\SFAMWLM050222SMA.M
 Quant Title : SFAM01.0

TIC Library : C:\Database\NIST20.L
 TIC Integration Parameters: LSCINT.P

 Peak Number 3 5-(p-Aminophenyl)-4-(p-toly... Concentration Rank 3

R.T.	EstConc	Area	Relative to ISTD	R.T.
12.609	1.50 ug/L	14406	1,4-Dichlorobenzene-d4	13.560

Hit#	of	5	Tentative ID	MW	MolForm	CAS#	Qual
1			5-(p-Aminophenyl)-4-(p-tolyl)-2-...	281	C16H15N3S	094460-46-5	53
2			3-Amino-6-nitro-4-phenyl-1H-quin...	281	C15H11N3O3	036020-93-6	50
3			5-(p-Aminophenyl)-4-(O-tolyl)-2-...	281	C16H15N3S	1000242-18-7	50
4			4-(1-Benzofuran-2-yl)aniline, TM...	281	C17H19NOSi	1000477-09-8	47
5			7H-Dibenzo[b,g]carbazole, 7-methyl-	281	C21H15N	003557-49-1	47



Data Path : Z:\voasrv\HPCHEM1\MSVOA_W\Data\VW050422\
Data File : VW022800.D
Acq On : 04 May 2022 14:29
Operator : SY/VA
Sample : N2632-15RE
Misc : 7.00g/10mL/MSVOA_W/SOIL
ALS Vial : 1 Sample Multiplier: 1

Instrument :
MSVOA_W
ClientSampleId :
EW4B7RE

Quant Method : Z:\voasrv\HPCHEM1\MSVOA_W\Method\SFAMWLM050222SMA.M
Quant Title : SFAM01.0

TIC Library : C:\Database\NIST20.L
TIC Integration Parameters: LSCINT.P

TIC Top Hit name	RT	EstConc	Units	Response	--Internal Standard--			
					#	RT	Resp	Conc
5-(p-Aminopheny...	12.609	1.5	ug/L	14406	3	13.560	240243	25.0