

Data Path : Z:\voasrv\HPCHEM1\MSVOA_W\Data\VW050522\
 Data File : VW022854.D
 Acq On : 05 May 2022 21:09
 Operator : SY/VA
 Sample : N2708-11
 Misc : 5.24g/10mL/MSVOA_W/SOIL
 ALS Vial : 1 Sample Multiplier: 1

Instrument :
 MSVOA_W
 ClientSampleId :
 EXL37

Integration Parameters: LSCINT.P

Integrator: RTE
 Smoothing : OFF
 Sampling : 1
 Start Thrs: 0.2
 Stop Thrs : 0

Filtering: 5
 Min Area: 0 % of largest Peak
 Max Peaks: 100
 Peak Location: TOP

If leading or trailing edge < 100 prefer < Baseline drop else tangent >
 Peak separation: 5

Method : Z:\voasrv\HPCHEM1\MSVOA_W\Method\SFAMWLM050222SMA.M
 Title : SFAM01.0

Signal : TIC: VW022854.D\data.ms

peak #	R.T. min	first scan	max scan	last scan	PK TY	peak height	corr. area	corr. % max.	% of total
1	2.349	68	73	81	rBV	132695	229746	17.24%	2.279%
2	2.885	156	161	170	rVB	87609	180705	13.56%	1.793%
3	3.294	226	228	231	rBV4	1118	1157	0.09%	0.011%
4	3.440	251	252	254	rBV2	655	633	0.05%	0.006%
5	3.495	259	261	263	rVB3	1157	952	0.07%	0.009%
6	3.580	273	275	277	rBV2	1139	1338	0.10%	0.013%
7	3.909	326	329	333	rBV4	1043	1440	0.11%	0.014%
8	4.019	336	347	363	rBV	126375	404974	30.39%	4.017%
9	4.239	380	383	385	rBV4	1352	1593	0.12%	0.016%
10	4.367	401	404	406	rBV3	840	1107	0.08%	0.011%
11	4.702	457	459	461	rBV3	1149	1385	0.10%	0.014%
12	4.836	479	481	482	rBV2	777	590	0.04%	0.006%
13	5.086	518	522	524	rBV5	1155	1223	0.09%	0.012%
14	5.208	540	542	544	rBV3	1349	1448	0.11%	0.014%
15	5.244	544	548	549	rVB2	846	1083	0.08%	0.011%
16	5.305	556	558	559	rBV	863	832	0.06%	0.008%
17	5.354	563	566	571	rBV7	655	1429	0.11%	0.014%
18	5.470	582	585	586	rBV3	875	992	0.07%	0.010%
19	5.531	592	595	598	rBV5	935	1217	0.09%	0.012%
20	5.665	615	617	619	rBV3	965	692	0.05%	0.007%
21	5.689	619	621	624	rBV3	504	594	0.04%	0.006%
22	5.805	637	640	642	rVB4	908	747	0.06%	0.007%
23	5.872	648	651	653	rVB4	1212	1153	0.09%	0.011%
24	5.933	656	661	662	rBV3	2375	4050	0.30%	0.040%
25	6.061	680	682	683	rBV2	964	749	0.06%	0.007%
26	6.250	711	713	715	rBV4	705	594	0.04%	0.006%
27	6.494	751	753	755	rBV3	693	611	0.05%	0.006%
28	6.604	770	771	773	rBV2	716	552	0.04%	0.005%
29	6.671	781	782	784	rBV2	737	548	0.04%	0.005%
30	6.726	788	791	792	rVV3	1131	647	0.05%	0.006%
31	6.787	799	801	803	rBV3	650	606	0.05%	0.006%
32	6.921	821	823	825	rVB3	900	656	0.05%	0.007%
33	6.958	827	829	830	rBV2	733	606	0.05%	0.006%
34	7.079	840	849	859	rBV	48949	147497	11.07%	1.463%
35	7.262	874	879	881	rBV2	4334	6789	0.51%	0.067%
36	7.372	895	897	899	rBV3	963	545	0.04%	0.005%

Data Path : Z:\voasrv\HPCHEM1\MSVOA_W\Data\VW050522\
 Data File : VW022854.D
 Acq On : 05 May 2022 21:09
 Operator : SY/VA
 Sample : N2708-11
 Misc : 5.24g/10mL/MSVOA_W/SOIL
 ALS Vial : 1 Sample Multiplier: 1

Instrument :
 MSVOA_W
 ClientSampleId :
 EXL37

Integration Parameters: LSCINT.P

Integrator: RTE
 Smoothing : OFF
 Sampling : 1
 Start Thrs: 0.2
 Stop Thrs : 0

Filtering: 5
 Min Area: 0 % of largest Peak
 Max Peaks: 100
 Peak Location: TOP

If leading or trailing edge < 100 prefer < Baseline drop else tangent >
 Peak separation: 5

Method : Z:\voasrv\HPCHEM1\MSVOA_W\Method\SFAMWLM050222SMA.M
 Title : SFAM01.0

37	7.494	915	917	918	rBV2	722	588	0.04%	0.006%
38	7.531	919	923	924	rBV4	3681	4060	0.30%	0.040%
39	7.592	931	933	934	rBV2	1941	1521	0.11%	0.015%
40	7.646	934	942	954	rVV	233588	573164	43.01%	5.686%
41	7.750	957	959	960	rVB2	1172	591	0.04%	0.006%
42	7.866	977	978	980	rBV2	1088	887	0.07%	0.009%
43	7.884	980	981	984	rVB2	1308	1111	0.08%	0.011%
44	8.122	1016	1020	1024	rBV5	682	1356	0.10%	0.013%
45	8.274	1033	1045	1060	rBV2	427961	1332494	100.00%	13.218%
46	8.841	1125	1138	1152	rBV	422714	832884	62.51%	8.262%
47	9.079	1173	1177	1183	rVB5	5864	11519	0.86%	0.114%
48	9.274	1199	1209	1218	rBV	304971	620676	46.58%	6.157%
49	9.500	1244	1246	1247	rBV2	1164	641	0.05%	0.006%
50	9.524	1247	1250	1256	rVV6	868	1737	0.13%	0.017%
51	9.658	1270	1272	1274	rBV2	1417	1083	0.08%	0.011%
52	9.713	1279	1281	1285	rVB5	1768	2567	0.19%	0.025%
53	9.750	1285	1287	1291	rBV5	1597	2365	0.18%	0.023%
54	9.786	1291	1293	1297	rBV5	1117	1492	0.11%	0.015%
55	9.817	1297	1298	1301	rBV2	592	664	0.05%	0.007%
56	9.884	1307	1309	1312	rVB4	873	1003	0.08%	0.010%
57	10.036	1326	1334	1345	rBV	162485	298239	22.38%	2.959%
58	10.323	1373	1381	1388	rBV	620027	1093735	82.08%	10.850%
59	10.579	1416	1423	1433	rVB	108315	185406	13.91%	1.839%
60	10.701	1438	1443	1444	rBV5	2118	3703	0.28%	0.037%
61	10.859	1462	1469	1473	rBV4	9102	17965	1.35%	0.178%
62	10.920	1473	1479	1492	rVB	195439	339282	25.46%	3.366%
63	11.463	1567	1568	1572	rVB3	751	679	0.05%	0.007%
64	11.493	1572	1573	1575	rBV2	762	754	0.06%	0.007%
65	11.627	1588	1595	1607	rBV	618401	1068923	80.22%	10.604%
66	11.798	1621	1623	1624	rVB2	947	641	0.05%	0.006%
67	11.829	1624	1628	1630	rBV4	2513	3977	0.30%	0.039%
68	11.902	1638	1640	1642	rBV3	1094	1073	0.08%	0.011%
69	12.091	1667	1671	1675	rVB6	943	1445	0.11%	0.014%
70	12.127	1675	1677	1678	rBV2	915	776	0.06%	0.008%
71	12.396	1718	1721	1723	rBV4	675	650	0.05%	0.006%
72	12.469	1728	1733	1738	rVB7	3256	5438	0.41%	0.054%
73	12.530	1741	1743	1744	rBV	712	732	0.05%	0.007%
74	12.542	1744	1745	1747	rVB2	1301	586	0.04%	0.006%
75	12.597	1748	1754	1755	rBV5	5159	7556	0.57%	0.075%
76	12.688	1762	1769	1777	rBV	295448	495319	37.17%	4.914%

Data Path : Z:\voasrv\HPCHEM1\MSVOA_W\Data\VW050522\
 Data File : VW022854.D
 Acq On : 05 May 2022 21:09
 Operator : SY/VA
 Sample : N2708-11
 Misc : 5.24g/10mL/MSVOA_W/SOIL
 ALS Vial : 1 Sample Multiplier: 1

Instrument :
 MSVOA_W
 ClientSampleId :
 EXL37

Integration Parameters: LSCINT.P

Integrator: RTE
 Smoothing : OFF Filtering: 5
 Sampling : 1 Min Area: 0 % of largest Peak
 Start Thrs: 0.2 Max Peaks: 100
 Stop Thrs : 0 Peak Location: TOP

If leading or trailing edge < 100 prefer < Baseline drop else tangent >
 Peak separation: 5

Method : Z:\voasrv\HPCHEM1\MSVOA_W\Method\SFAMWLM050222SMA.M
 Title : SFAM01.0

77	12.871	1797	1799	1801	rBV2	895	783	0.06%	0.008%
78	13.060	1828	1830	1832	rBV3	1266	1206	0.09%	0.012%
79	13.084	1832	1834	1836	rBV3	865	673	0.05%	0.007%
80	13.401	1880	1886	1890	rVB6	2713	5611	0.42%	0.056%
81	13.469	1894	1897	1899	rBV4	1688	2053	0.15%	0.020%
82	13.554	1904	1911	1923	rBV	701908	1115639	83.73%	11.067%
83	13.853	1950	1960	1969	rBV	580921	986751	74.05%	9.789%
84	14.017	1985	1987	1990	rBV3	1055	834	0.06%	0.008%
85	14.060	1990	1994	2000	rBV	7851	14224	1.07%	0.141%
86	14.139	2005	2007	2010	rVB2	1792	1499	0.11%	0.015%
87	14.322	2033	2037	2042	rBV4	7222	12086	0.91%	0.120%
88	14.627	2084	2087	2091	rBV6	2164	3411	0.26%	0.034%
89	14.938	2137	2138	2140	rBV2	910	959	0.07%	0.010%
90	15.054	2154	2157	2158	rBV3	1067	1248	0.09%	0.012%
91	15.127	2165	2169	2170	rBV4	1216	1399	0.10%	0.014%
92	15.169	2174	2176	2178	rBV2	1105	1314	0.10%	0.013%
93	15.352	2202	2206	2208	rBV5	1812	2431	0.18%	0.024%
94	15.486	2224	2228	2229	rBV3	2612	2893	0.22%	0.029%
95	15.621	2247	2250	2251	rBV3	719	831	0.06%	0.008%
96	15.675	2258	2259	2260	rBV	1059	561	0.04%	0.006%
97	16.413	2378	2380	2383	rBV4	881	785	0.06%	0.008%
98	16.450	2385	2386	2387	rBV	1530	817	0.06%	0.008%
99	16.492	2392	2393	2397	rBV4	954	1041	0.08%	0.010%
100	16.767	2437	2438	2439	rBV	1331	876	0.07%	0.009%

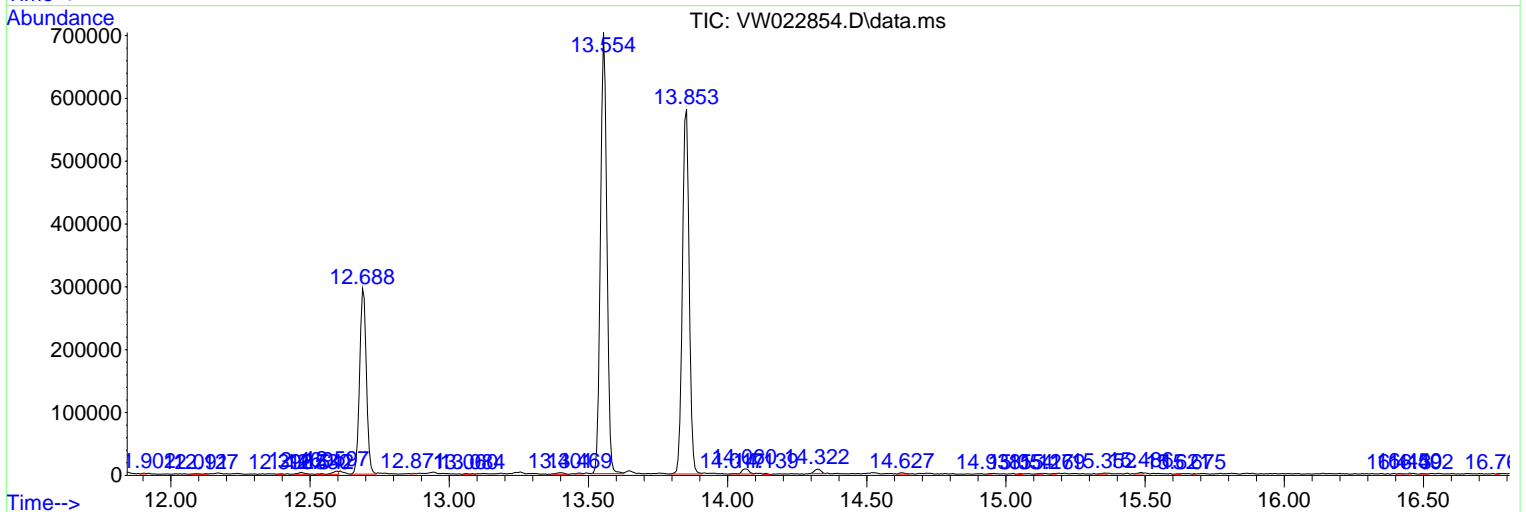
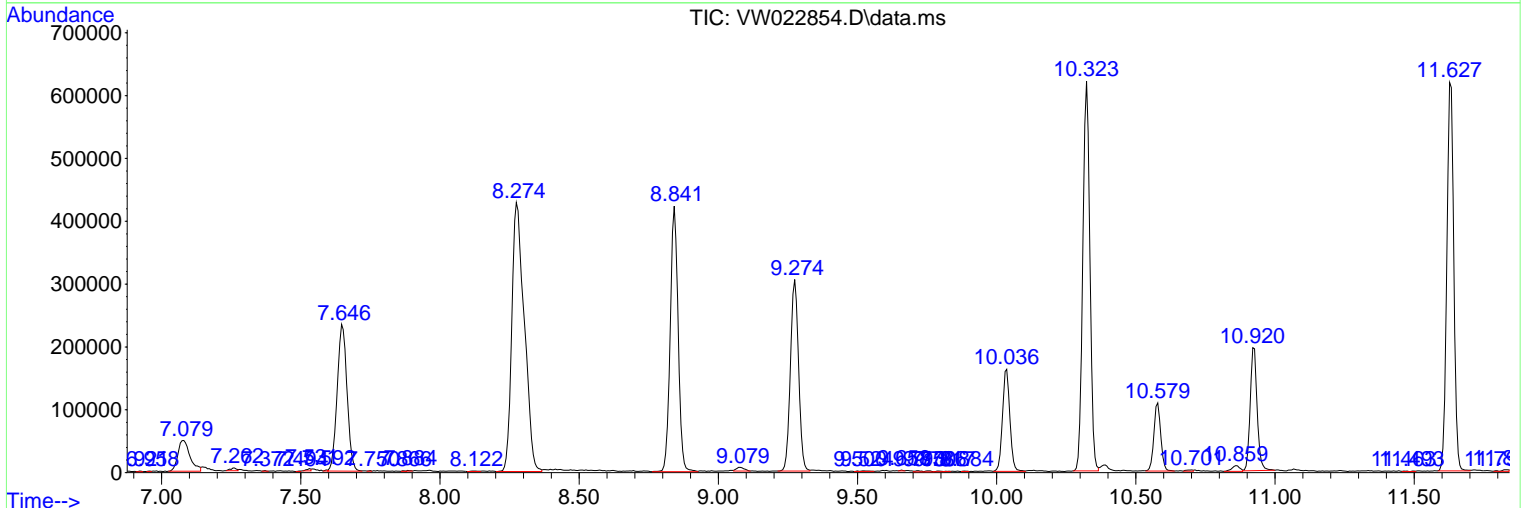
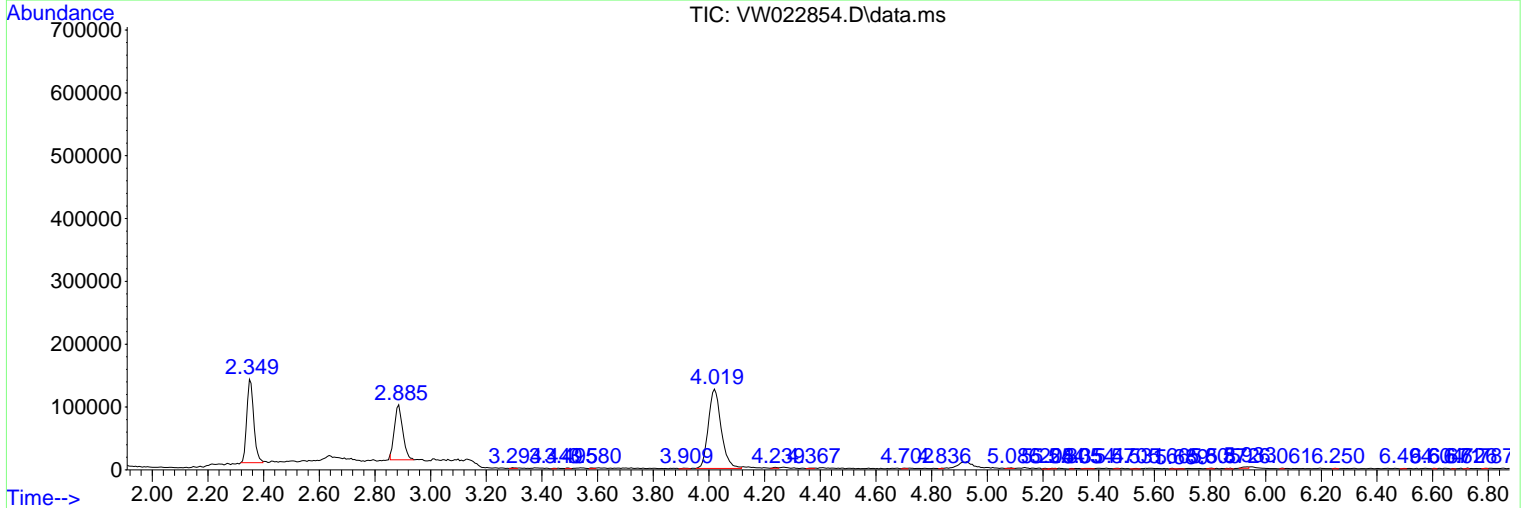
Sum of corrected areas: 10080687

Data Path : Z:\voasrv\HPCHEM1\MSVOA_W\Data\VW050522\
 Data File : VW022854.D
 Acq On : 05 May 2022 21:09
 Operator : SY/VA
 Sample : N2708-11
 Misc : 5.24g/10mL/MSVOA_W/SOIL
 ALS Vial : 1 Sample Multiplier: 1

Instrument :
 MSVOA_W
 ClientSampleId :
 EXL37

Quant Method : Z:\voasrv\HPCHEM1\MSVOA_W\Method\SFAMWLM050222SMA.M
 Quant Title : SFAM01.0

TIC Library : C:\Database\NIST20.L
 TIC Integration Parameters: LSCINT.P



Library Search Compound Report

Data Path : Z:\voasrv\HPCHEM1\MSVOA_W\Data\VW050522\
Data File : VW022854.D
Acq On : 05 May 2022 21:09
Operator : SY/VA
Sample : N2708-11
Misc : 5.24g/10mL/MSVOA_W/SOIL
ALS Vial : 1 Sample Multiplier: 1

Instrument :
MSVOA_W
ClientSampleId :
EXL37

Quant Method : Z:\voasrv\HPCHEM1\MSVOA_W\Method\SFAMWLM050222SMA.M
Quant Title : SFAM01.0

TIC Library : C:\Database\NIST20.L
TIC Integration Parameters: LSCINT.P

No Library Search Compounds Detected

Data Path : Z:\voasrv\HPCHEM1\MSVOA_W\Data\VW050522\
Data File : VW022854.D
Acq On : 05 May 2022 21:09
Operator : SY/VA
Sample : N2708-11
Misc : 5.24g/10mL/MSVOA_W/SOIL
ALS Vial : 1 Sample Multiplier: 1

Instrument :
MSVOA_W
ClientSampleId :
EXL37

Quant Method : Z:\voasrv\HPCHEM1\MSVOA_W\Method\SFAMWLM050222SMA.M
Quant Title : SFAM01.0

TIC Library : C:\Database\NIST0.L
TIC Integration Parameters: LSCINT.P

TIC Top Hit name	RT	EstConc	Units	Response	--Internal Standard--		
					#	RT	Resp Conc
