

Data Path : Z:\voasrv\HPCHEM1\MSVOA\_W\Data\VW050622\  
 Data File : VW022880.D  
 Acq On : 06 May 2022 11:15  
 Operator : SY/VA  
 Sample : N2632-03  
 Misc : 5.04g/10mL/MSVOA\_W/SOIL  
 ALS Vial : 1 Sample Multiplier: 1

Instrument :  
 MSVOA\_W  
 ClientSampleId :  
 VHBLK001

Integration Parameters: LSCINT.P

Integrator: RTE  
 Smoothing : OFF  
 Sampling : 1  
 Start Thrs: 0.2  
 Stop Thrs : 0

Filtering: 5  
 Min Area: 0 % of largest Peak  
 Max Peaks: 100  
 Peak Location: TOP

If leading or trailing edge < 100 prefer < Baseline drop else tangent >  
 Peak separation: 5

Method : Z:\voasrv\HPCHEM1\MSVOA\_W\Method\SFAMWLM050222SMA.M  
 Title : SFAM01.0

Signal : TIC: VW022880.D\data.ms

peak #	R.T. min	first scan	max scan	last scan	PK TY	peak height	corr. area	corr. % max.	% of total
1	2.349	68	73	81	rBV	129560	212251	17.15%	2.362%
2	2.891	156	162	173	rVB	73928	158857	12.83%	1.768%
3	3.221	214	216	217	rBV2	1362	865	0.07%	0.010%
4	3.489	256	260	262	rBV5	1277	1674	0.14%	0.019%
5	4.013	335	346	361	rVV	127836	386661	31.23%	4.303%
6	4.245	382	384	386	rBV3	1197	1095	0.09%	0.012%
7	4.348	398	401	402	rBV2	1177	1221	0.10%	0.014%
8	4.544	432	433	436	rVB3	1437	888	0.07%	0.010%
9	4.574	436	438	440	rBV3	935	854	0.07%	0.010%
10	4.745	460	466	469	rVV7	850	1630	0.13%	0.018%
11	4.909	486	493	505	rBV6	6464	21826	1.76%	0.243%
12	5.202	539	541	542	rBV2	941	693	0.06%	0.008%
13	5.415	574	576	577	rBV2	1034	769	0.06%	0.009%
14	5.434	577	579	580	rBV2	985	821	0.07%	0.009%
15	5.549	595	598	600	rVB3	1130	1207	0.10%	0.013%
16	5.592	603	605	607	rVV3	897	648	0.05%	0.007%
17	5.647	612	614	616	rBV3	741	697	0.06%	0.008%
18	5.696	620	622	624	rBV3	1030	963	0.08%	0.011%
19	5.860	646	649	651	rVB3	745	731	0.06%	0.008%
20	5.921	656	659	660	rBV3	1552	1908	0.15%	0.021%
21	6.037	676	678	679	rBV	1228	829	0.07%	0.009%
22	6.062	679	682	684	rVV4	1084	1248	0.10%	0.014%
23	6.116	687	691	692	rBV4	1496	1887	0.15%	0.021%
24	6.336	725	727	729	rVB2	1335	1086	0.09%	0.012%
25	6.373	729	733	737	rBV6	1552	2520	0.20%	0.028%
26	6.580	765	767	770	rBV3	612	710	0.06%	0.008%
27	6.671	779	782	784	rBV2	1130	1100	0.09%	0.012%
28	6.696	784	786	789	rVB3	970	977	0.08%	0.011%
29	6.775	797	799	802	rBV4	1307	1173	0.09%	0.013%
30	6.818	804	806	810	rVB3	1667	1951	0.16%	0.022%
31	6.897	816	819	820	rVB2	1278	946	0.08%	0.011%
32	6.933	822	825	829	rBV6	993	1497	0.12%	0.017%
33	7.000	833	836	839	rBV5	843	1216	0.10%	0.014%
34	7.080	841	849	855	rBV	34415	99936	8.07%	1.112%
35	7.464	909	912	915	rVB5	1288	1785	0.14%	0.020%
36	7.513	915	920	923	rBV6	975	2202	0.18%	0.025%

Data Path : Z:\voasrv\HPCHEM1\MSVOA\_W\Data\VW050622\  
 Data File : VW022880.D  
 Acq On : 06 May 2022 11:15  
 Operator : SY/VA  
 Sample : N2632-03  
 Misc : 5.04g/10mL/MSVOA\_W/SOIL  
 ALS Vial : 1 Sample Multiplier: 1

Instrument :  
 MSVOA\_W  
 ClientSampleId :  
 VHBLK001

Integration Parameters: LSCINT.P

Integrator: RTE  
 Smoothing : OFF  
 Sampling : 1  
 Start Thrs: 0.2  
 Stop Thrs : 0

Filtering: 5  
 Min Area: 0 % of largest Peak  
 Max Peaks: 100  
 Peak Location: TOP

If leading or trailing edge < 100 prefer < Baseline drop else tangent >  
 Peak separation: 5

Method : Z:\voasrv\HPCHEM1\MSVOA\_W\Method\SFAMWLM050222SMA.M  
 Title : SFAM01.0

37	7.647	933	942	954	rVB	204764	501163	40.48%	5.577%
38	7.860	974	977	978	rBV3	1276	1207	0.10%	0.013%
39	8.025	1002	1004	1006	rBV3	1085	1034	0.08%	0.012%
40	8.067	1006	1011	1013	rBV5	873	1142	0.09%	0.013%
41	8.098	1013	1016	1019	rVB5	964	1303	0.11%	0.014%
42	8.140	1021	1023	1025	rBV3	1178	927	0.07%	0.010%
43	8.275	1033	1045	1059	rBV2	401421	1237923	100.00%	13.775%
44	8.464	1075	1076	1078	rBV2	1571	893	0.07%	0.010%
45	8.842	1128	1138	1150	rBV	356545	717727	57.98%	7.987%
46	9.274	1201	1209	1218	rBV	273169	545215	44.04%	6.067%
47	9.457	1237	1239	1244	rVB6	1214	1680	0.14%	0.019%
48	9.524	1248	1250	1252	rBV3	734	677	0.05%	0.008%
49	9.585	1259	1260	1261	rBV	1024	677	0.05%	0.008%
50	9.628	1266	1267	1269	rVV2	1020	723	0.06%	0.008%
51	9.646	1269	1270	1278	rVV6	1437	3788	0.31%	0.042%
52	9.750	1282	1287	1294	rVB8	2425	6473	0.52%	0.072%
53	9.890	1303	1310	1318	rVB5	7809	15921	1.29%	0.177%
54	10.036	1326	1334	1342	rBV	143880	253235	20.46%	2.818%
55	10.207	1358	1362	1364	rBV5	1894	2918	0.24%	0.032%
56	10.323	1373	1381	1388	rBV	571345	1000865	80.85%	11.137%
57	10.506	1405	1411	1415	rBV7	2890	4899	0.40%	0.055%
58	10.579	1415	1423	1433	rVV2	88386	158028	12.77%	1.758%
59	10.701	1438	1443	1451	rVB2	19840	35651	2.88%	0.397%
60	10.920	1473	1479	1490	rBV	132609	238271	19.25%	2.651%
61	11.061	1498	1502	1510	rVB3	10288	18636	1.51%	0.207%
62	11.286	1538	1539	1543	rBV3	1167	1553	0.13%	0.017%
63	11.433	1560	1563	1569	rVB3	9739	15005	1.21%	0.167%
64	11.628	1587	1595	1604	rBV	538275	918598	74.20%	10.222%
65	11.951	1646	1648	1651	rVB3	1614	1299	0.10%	0.014%
66	11.981	1651	1653	1658	rVB5	1235	1898	0.15%	0.021%
67	12.024	1658	1660	1663	rBV4	519	654	0.05%	0.007%
68	12.146	1679	1680	1682	rBV2	711	670	0.05%	0.007%
69	12.225	1690	1693	1694	rBV3	832	892	0.07%	0.010%
70	12.359	1712	1715	1717	rBV4	1255	1421	0.11%	0.016%
71	12.463	1728	1732	1739	rBV9	3519	7671	0.62%	0.085%
72	12.536	1742	1744	1747	rBV4	1165	1427	0.12%	0.016%
73	12.603	1748	1755	1762	rVV3	17883	37315	3.01%	0.415%
74	12.688	1762	1769	1777	rVV	230916	388421	31.38%	4.322%
75	12.835	1791	1793	1796	rBV4	906	1134	0.09%	0.013%
76	12.896	1802	1803	1805	rBV2	1186	912	0.07%	0.010%

Data Path : Z:\voasrv\HPCHEM1\MSVOA\_W\Data\VW050622\  
 Data File : VW022880.D  
 Acq On : 06 May 2022 11:15  
 Operator : SY/VA  
 Sample : N2632-03  
 Misc : 5.04g/10mL/MSVOA\_W/SOIL  
 ALS Vial : 1 Sample Multiplier: 1

Instrument :  
 MSVOA\_W  
 ClientSampleId :  
 VHBLK001

Integration Parameters: LSCINT.P

Integrator: RTE  
 Smoothing : OFF  
 Sampling : 1  
 Start Thrs : 0.2  
 Stop Thrs : 0

Filtering: 5  
 Min Area: 0 % of largest Peak  
 Max Peaks: 100  
 Peak Location: TOP

If leading or trailing edge < 100 prefer < Baseline drop else tangent >  
 Peak separation: 5

Method : Z:\voasrv\HPCHEM1\MSVOA\_W\Method\SFAMWLM050222SMA.M  
 Title : SFAM01.0

77	12.938	1805	1810	1814	rBV7	3914	8248	0.67%	0.092%
78	13.188	1848	1851	1855	rVB5	3023	4430	0.36%	0.049%
79	13.286	1865	1867	1878	rVB10	2958	5423	0.44%	0.060%
80	13.402	1878	1886	1891	rBV10	4196	8121	0.66%	0.090%
81	13.554	1904	1911	1927	rVB	607101	975024	78.76%	10.850%
82	13.755	1940	1944	1949	rBV5	3048	7078	0.57%	0.079%
83	13.853	1953	1960	1969	rVV	521822	877769	70.91%	9.767%
84	14.066	1990	1995	2000	rVB2	11404	17482	1.41%	0.195%
85	14.456	2056	2059	2061	rBV4	1261	1674	0.14%	0.019%
86	14.597	2078	2082	2084	rBV3	1135	1887	0.15%	0.021%
87	14.688	2093	2097	2099	rBV4	1262	1972	0.16%	0.022%
88	14.712	2099	2101	2104	rBV2	1521	1975	0.16%	0.022%
89	14.987	2145	2146	2149	rBV3	741	869	0.07%	0.010%
90	15.090	2158	2163	2166	rBV6	1396	2062	0.17%	0.023%
91	15.121	2166	2168	2172	rVV3	1401	1637	0.13%	0.018%
92	15.359	2204	2207	2214	rBV7	2207	4964	0.40%	0.055%
93	15.432	2214	2219	2224	rVV4	6399	11037	0.89%	0.123%
94	15.481	2224	2227	2231	rVB5	1407	2025	0.16%	0.023%
95	15.578	2240	2243	2246	rVB4	2068	2050	0.17%	0.023%
96	16.102	2327	2329	2330	rBV2	909	675	0.05%	0.008%
97	16.139	2334	2335	2337	rVV2	1037	763	0.06%	0.008%
98	16.529	2397	2399	2400	rBV2	1254	859	0.07%	0.010%
99	16.578	2404	2407	2409	rBV3	643	839	0.07%	0.009%
100	16.730	2430	2432	2434	rBV3	891	711	0.06%	0.008%

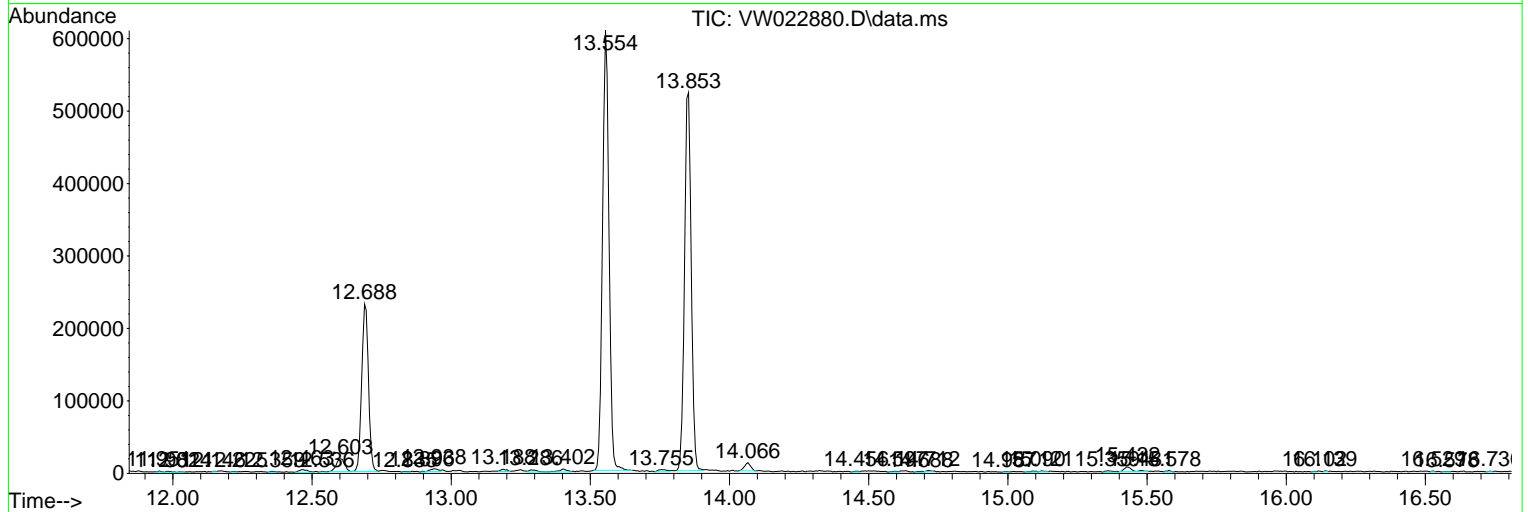
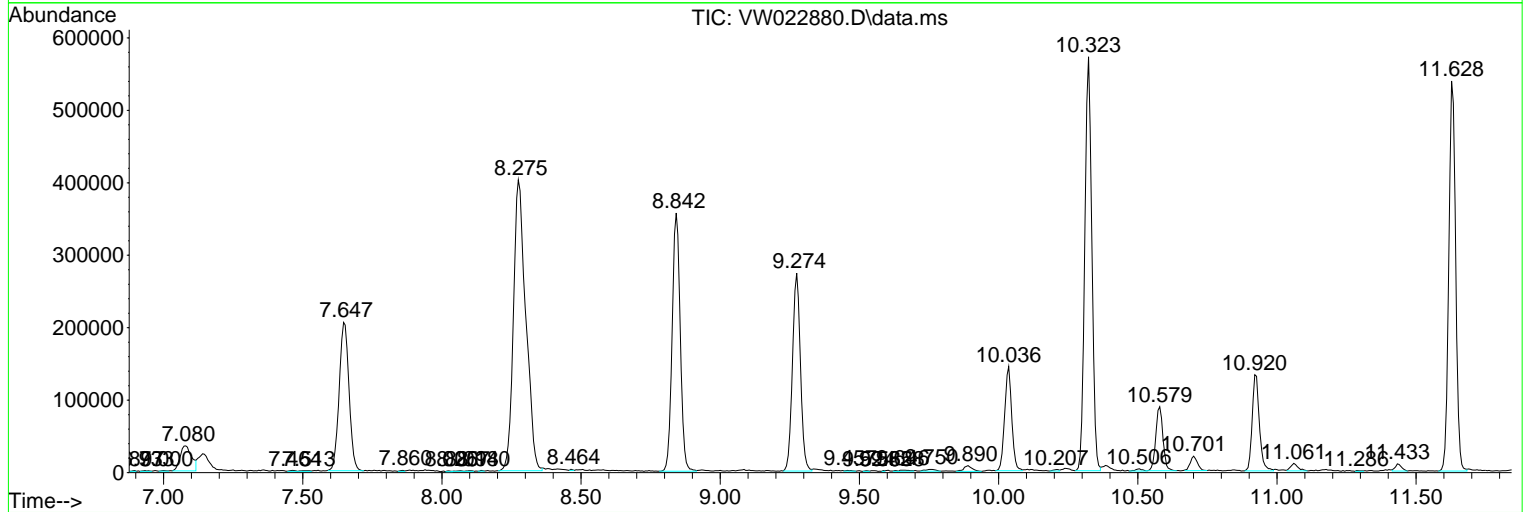
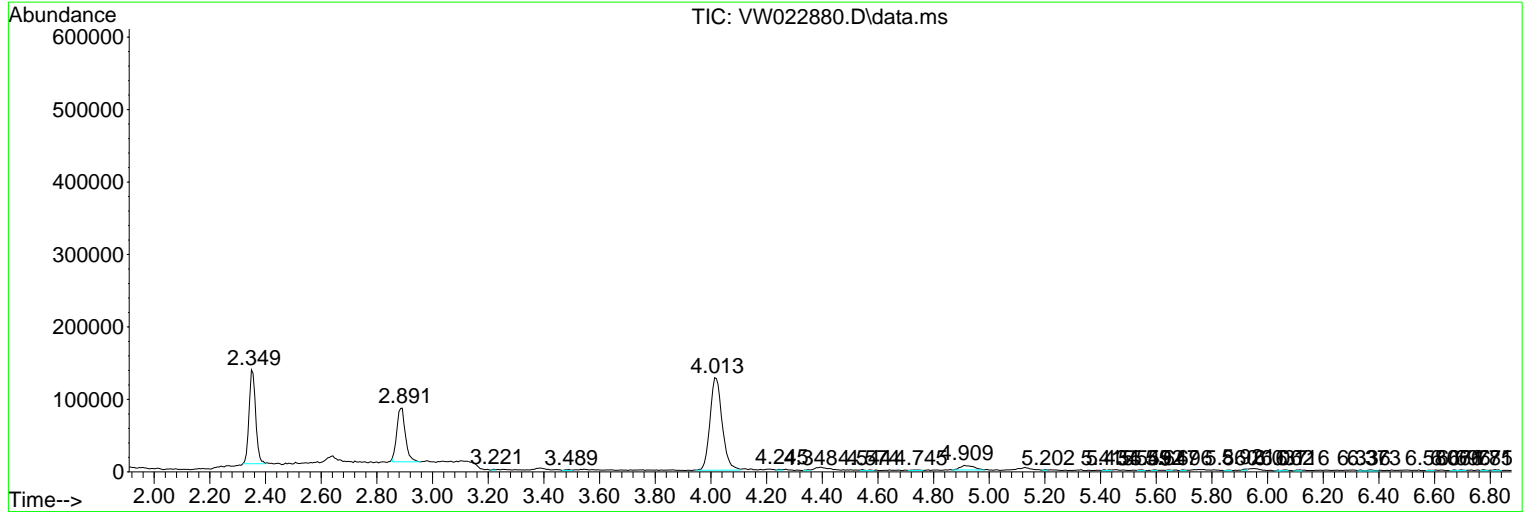
Sum of corrected areas: 8986742

Data Path : Z:\voasrv\HPCHEM1\MSVOA\_W\Data\VW050622\  
 Data File : VW022880.D  
 Acq On : 06 May 2022 11:15  
 Operator : SY/VA  
 Sample : N2632-03  
 Misc : 5.04g/10mL/MSVOA\_W/SOIL  
 ALS Vial : 1 Sample Multiplier: 1

Instrument :  
 MSVOA\_W  
 ClientSampleId :  
 VHBLK001

Quant Method : Z:\voasrv\HPCHEM1\MSVOA\_W\Method\SFAMWLM050222SMA.M  
 Quant Title : SFAM01.0

TIC Library : C:\Database\NIST20.L  
 TIC Integration Parameters: LSCINT.P



Data Path : Z:\voasrv\HPCHEM1\MSVOA\_W\Data\VW050622\  
Data File : VW022880.D  
Acq On : 06 May 2022 11:15  
Operator : SY/VA  
Sample : N2632-03  
Misc : 5.04g/10mL/MSVOA\_W/SOIL  
ALS Vial : 1 Sample Multiplier: 1

**Instrument :**  
MSVOA\_W  
**ClientSampleId :**  
VHBLK001

Quant Method : Z:\voasrv\HPCHEM1\MSVOA\_W\Method\SFAMWLM050222SMA.M  
Quant Title : SFAM01.0

TIC Library : C:\Database\NIST0.L  
TIC Integration Parameters: LSCINT.P

No Library Search Compounds Detected

\*\*\*\*\*

Data Path : Z:\voasrv\HPCHEM1\MSVOA\_W\Data\VW050622\  
Data File : VW022880.D  
Acq On : 06 May 2022 11:15  
Operator : SY/VA  
Sample : N2632-03  
Misc : 5.04g/10mL/MSVOA\_W/SOIL  
ALS Vial : 1 Sample Multiplier: 1

Instrument :  
MSVOA\_W  
ClientSampleId :  
VHBLK001

Quant Method : Z:\voasrv\HPCHEM1\MSVOA\_W\Method\SFAMWLM050222SMA.M  
Quant Title : SFAM01.0

TIC Library : C:\Database\NIST20.L  
TIC Integration Parameters: LSCINT.P

TIC Top Hit name	RT	EstConc	Units	Response	--Internal Standard--		
					#	RT	Resp Conc

---