

Data Path : Z:\voasrv\HPCHEM1\MSVOA_W\Data\VW050922\
 Data File : VW022924.D
 Acq On : 09 May 2022 12:52
 Operator : SY/VA
 Sample : N2713-13MS
 Misc : 5.62g/10mL/MSVOA_W/SOIL
 ALS Vial : 1 Sample Multiplier: 1

Instrument :
 MSVOA_W
 ClientSampleId :
 DBSL3MS

Quant Time: May 09 22:56:57 2022
 Quant Method : Z:\voasrv\HPCHEM1\MSVOA_W\Method\SFAMWLM050222SMA.M
 Quant Title : SFAM01.0
 QLast Update : Mon May 09 22:55:00 2022
 Response via : Initial Calibration

Compound	R.T.	QIon	Response	Conc	Units	Dev(Min)
Internal Standards						
1) 1,4-Difluorobenzene	8.841	114	369197	25.000	ug/L	0.00
28) Chlorobenzene-d5	11.628	117	368408	25.000	ug/L	0.00
58) 1,4-Dichlorobenzene-d4	13.554	152	211421	25.000	ug/L	0.00
System Monitoring Compounds						
4) Vinyl Chloride-d3	2.355	65	120347	15.888	ug/L	0.00
Spiked Amount	25.000	Range 30 - 150	Recovery =	63.560%		
7) Chloroethane-d5	2.885	69	98128	19.913	ug/L	0.00
Spiked Amount	25.000	Range 30 - 150	Recovery =	79.640%		
11) 1,1-Dichloroethene-d2	4.025	63	173859	17.764	ug/L	0.00
Spiked Amount	25.000	Range 45 - 110	Recovery =	71.040%		
21) 2-Butanone-d5	7.080	46	67160	46.633	ug/L	0.00
Spiked Amount	50.000	Range 20 - 135	Recovery =	93.260%		
24) Chloroform-d	7.647	84	239138	22.108	ug/L	0.00
Spiked Amount	25.000	Range 40 - 150	Recovery =	88.440%		
26) 1,2-Dichloroethane-d4	8.305	65	128650	21.686	ug/L	0.00
Spiked Amount	25.000	Range 70 - 130	Recovery =	86.760%		
32) Benzene-d6	8.274	84	426745	20.096	ug/L	0.00
Spiked Amount	25.000	Range 20 - 135	Recovery =	80.400%		
36) 1,2-Dichloropropane-d6	9.274	67	131652	22.071	ug/L	0.00
Spiked Amount	25.000	Range 70 - 120	Recovery =	88.280%		
41) Toluene-d8	10.323	98	409731	19.974	ug/L	0.00
Spiked Amount	25.000	Range 30 - 130	Recovery =	79.880%		
43) trans-1,3-Dichloroprop...	10.579	79	58291	21.224	ug/L	0.00
Spiked Amount	25.000	Range 30 - 135	Recovery =	84.880%		
47) 2-Hexanone-d5	10.920	63	54987	48.290	ug/L	0.00
Spiked Amount	50.000	Range 20 - 135	Recovery =	96.580%		
56) 1,1,2,2-Tetrachloroeth...	12.688	84	133490	24.010	ug/L	0.00
Spiked Amount	25.000	Range 45 - 120	Recovery =	96.040%		
66) 1,2-Dichlorobenzene-d4	13.847	152	166987	22.595	ug/L	0.00
Spiked Amount	25.000	Range 75 - 120	Recovery =	90.360%		
Target Compounds						
3) Chloromethane	2.215	50	92616	23.814	ug/L	100
5) Vinyl chloride	2.361	62	169687	21.740	ug/L	99
6) Bromomethane	2.775	94	104604	20.873	ug/L	97
8) Chloroethane	2.922	64	91639	24.342	ug/L	96
9) Trichlorofluoromethane	3.257	101	79590	22.310	ug/L	98
10) 1,1,2-Trichloro-1,2,2-...	4.062	101	117287	21.988	ug/L	98
12) 1,1-Dichloroethene	4.037	96	103056	21.794	ug/L	95
13) Acetone	4.117	43	38111	35.345	ug/L	99
14) Carbon disulfide	4.385	76	238209	18.375	ug/L	100
15) Methyl Acetate	4.665	43	48172	22.238	ug/L	99
16) Methylene chloride	4.921	84	117731	21.793	ug/L	96
17) trans-1,2-Dichloroethene	5.427	96	115852	21.771	ug/L	99
18) Methyl tert-butyl Ether	5.427	73	200316	24.660	ug/L	100
19) 1,1-Dichloroethane	6.220	63	212785	23.594	ug/L	97
20) cis-1,2-Dichloroethene	7.165	96	135422	23.694	ug/L	97
22) 2-Butanone	7.171	43	61274	40.635	ug/L	98
23) Bromochloromethane	7.519	128	61731	23.062	ug/L	90
25) Chloroform	7.677	83	242328	24.300	ug/L	99
27) 1,2-Dichloroethane	8.396	62	157385	23.676	ug/L	100

Data Path : Z:\voasrv\HPCHEM1\MSVOA_W\Data\VW050922\
 Data File : VW022924.D
 Acq On : 09 May 2022 12:52
 Operator : SY/VA
 Sample : N2713-13MS
 Misc : 5.62g/10mL/MSVOA_W/SOIL
 ALS Vial : 1 Sample Multiplier: 1

Instrument :
 MSVOA_W
 ClientSampleId :
 DBSL3MS

Quant Time: May 09 22:56:57 2022
 Quant Method : Z:\voasrv\HPCHEM1\MSVOA_W\Method\SFAMWLM050222SMA.M
 Quant Title : SFAM01.0
 QLast Update : Mon May 09 22:55:00 2022
 Response via : Initial Calibration

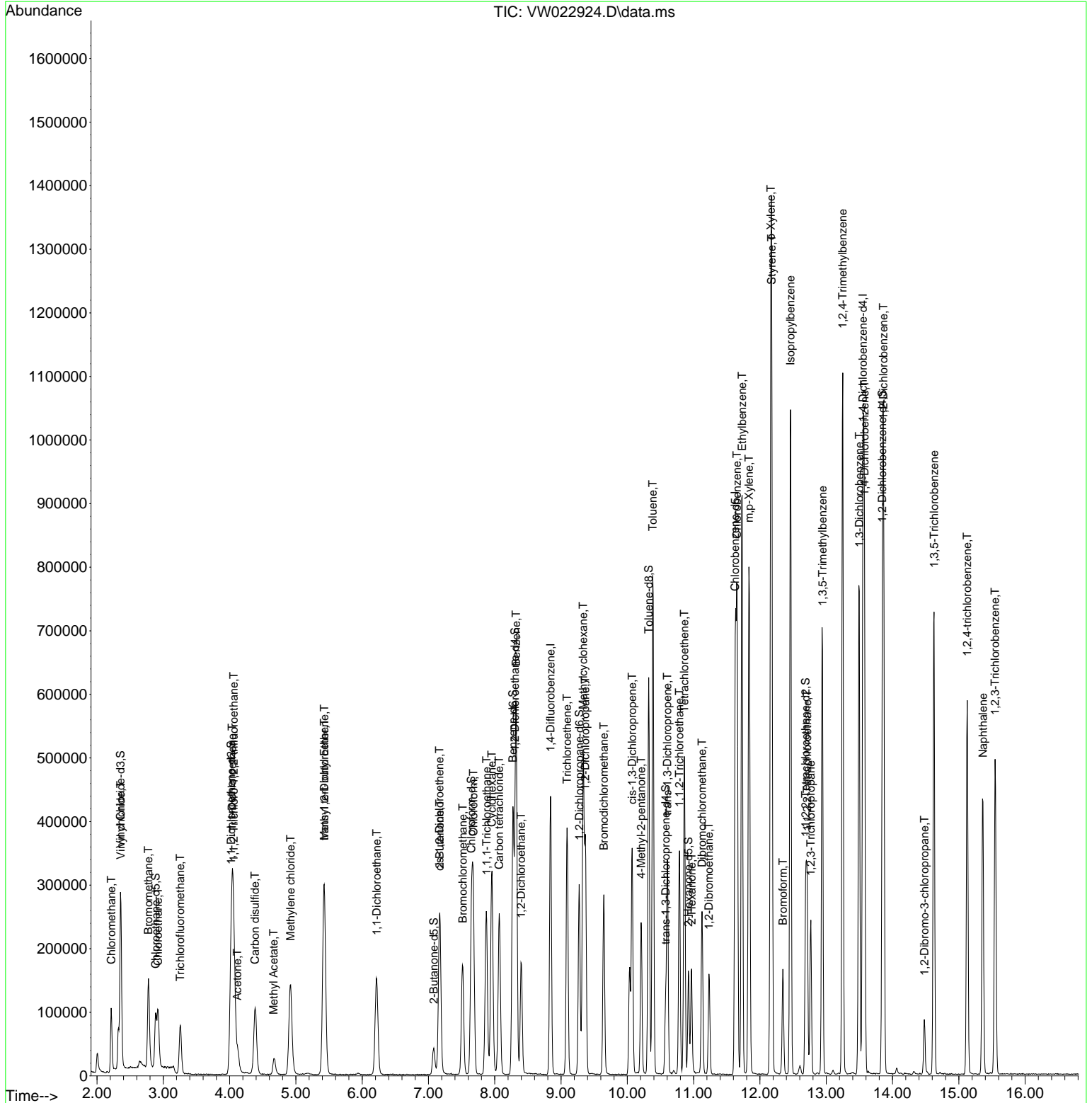
Compound	R.T.	QIon	Response	Conc	Units	Dev(Min)
29) Cyclohexane	7.957	56	167534	21.027	ug/L	99
30) 1,1,1-Trichloroethane	7.878	97	202720	23.285	ug/L	99
31) Carbon tetrachloride	8.067	117	187743	23.053	ug/L	99
33) Benzene	8.323	78	499532	23.017	ug/L	100
34) Trichloroethene	9.091	95	136248	22.827	ug/L	96
35) Methylcyclohexane	9.335	83	204582	20.865	ug/L	98
37) 1,2-Dichloropropane	9.366	63	127557	24.287	ug/L	100
38) Bromodichloromethane	9.646	83	180238	24.161	ug/L	99
39) cis-1,3-Dichloropropene	10.073	75	199958	24.554	ug/L	99
40) 4-Methyl-2-pentanone	10.207	43	146515	44.259	ug/L	98
42) Toluene	10.384	91	572324	23.531	ug/L	97
44) trans-1,3-Dichloropropene	10.603	75	181177	24.925	ug/L	99
45) 1,1,2-Trichloroethane	10.786	97	106660	24.293	ug/L	98
46) Tetrachloroethene	10.859	164	97522	21.742	ug/L	93
48) 2-Hexanone	10.969	43	101035	45.679	ug/L	98
49) Dibromochloromethane	11.128	129	130595	24.714	ug/L	93
50) 1,2-Dibromoethane	11.231	107	101372	22.994	ug/L #	92
51) Chlorobenzene	11.652	112	387055	24.138	ug/L	98
52) Ethylbenzene	11.731	91	652618	24.118	ug/L	98
53) m,p-Xylene	11.835	106	258406	24.236	ug/L	96
54) o-Xylene	12.164	106	249606	24.396	ug/L	98
55) Styrene	12.176	104	442765	25.467	ug/L	97
57) 1,1,2,2-Tetrachloroethane	12.713	83	132145	24.097	ug/L	97
59) Bromoform	12.347	173	69040	23.042	ug/L	99
60) Isopropylbenzene	12.463	105	688373	23.767	ug/L	99
61) 1,2,3-Trichloropropane	12.768	75	93864	22.220	ug/L	99
62) 1,3,5-Trimethylbenzene	12.944	105	378045	23.461	ug/L	98
63) 1,2,4-Trimethylbenzene	13.249	105	591765	24.458	ug/L	98
64) 1,3-Dichlorobenzene	13.499	146	308847	23.883	ug/L	94
65) 1,4-Dichlorobenzene	13.578	146	313107	23.441	ug/L	98
67) 1,2-Dichlorobenzene	13.865	146	288496	24.380	ug/L	99
68) 1,2-Dibromo-3-chloropr...	14.481	75	20625	22.340	ug/L	88
69) 1,3,5-Trichlorobenzene	14.627	180	204992	23.881	ug/L	98
70) 1,2,4-trichlorobenzene	15.127	180	169304	24.519	ug/L	96
71) Naphthalene	15.365	128	381323	25.409	ug/L	100
72) 1,2,3-Trichlorobenzene	15.548	180	153668	25.110	ug/L	97

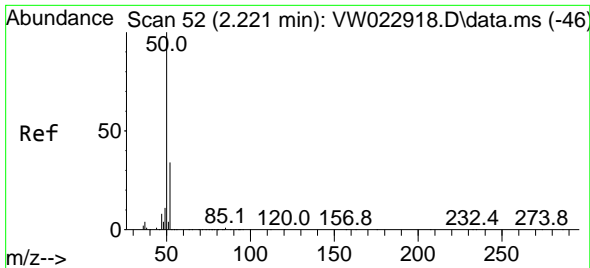
(#) = qualifier out of range (m) = manual integration (+) = signals summed

Data Path : Z:\voasrv\HPCHEM1\MSVOA_W\Data\VW050922\
 Data File : VW022924.D
 Acq On : 09 May 2022 12:52
 Operator : SY/VA
 Sample : N2713-13MS
 Misc : 5.62g/10mL/MSVOA_W/SOIL
 ALS Vial : 1 Sample Multiplier: 1

Instrument :
 MSVOA_W
 ClientSampleId :
 DBSL3MS

Quant Time: May 09 22:56:57 2022
 Quant Method : Z:\voasrv\HPCHEM1\MSVOA_W\Method\SFAMWLM050222SMA.M
 Quant Title : SFAM01.0
 QLast Update : Mon May 09 22:55:00 2022
 Response via : Initial Calibration

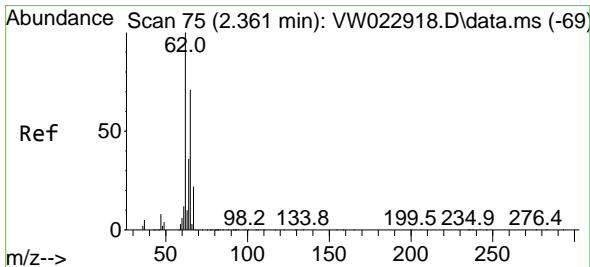
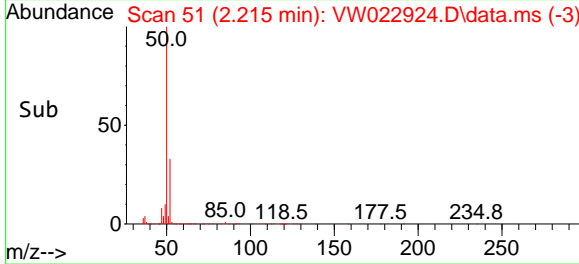
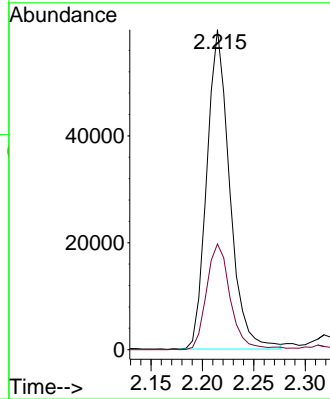
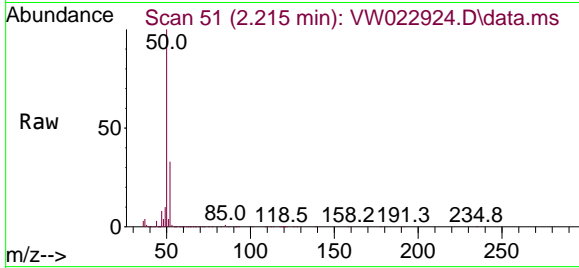




#3
 Chloromethane
 Concen: 23.814 ug/L
 RT: 2.215 min Scan# 51
 Delta R.T. -0.006 min
 Lab File: VW022924.D
 Acq: 09 May 2022 12:52

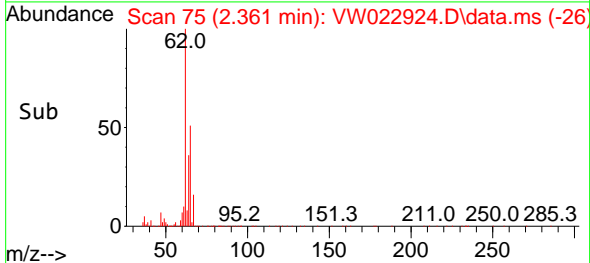
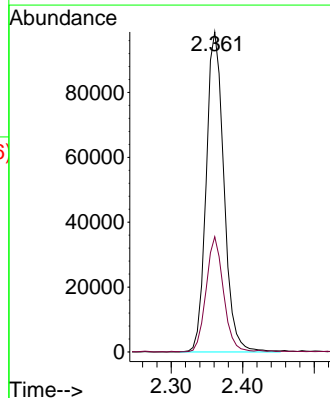
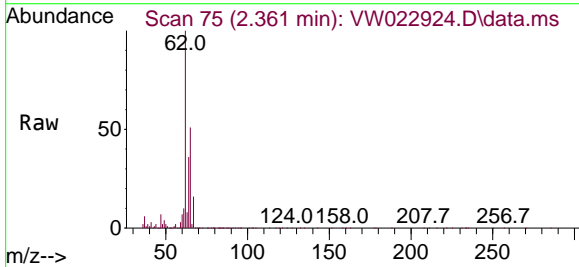
Instrument : MSVOA_W
 ClientSampleId : DBSL3MS

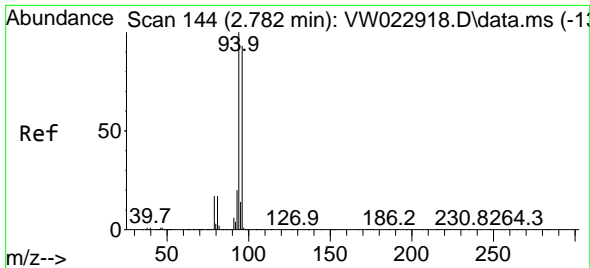
Tgt Ion: 50 Resp: 92616
 Ion Ratio Lower Upper
 50 100
 52 33.0 23.1 42.9



#5
 Vinyl chloride
 Concen: 21.740 ug/L
 RT: 2.361 min Scan# 75
 Delta R.T. -0.000 min
 Lab File: VW022924.D
 Acq: 09 May 2022 12:52

Tgt Ion: 62 Resp: 169687
 Ion Ratio Lower Upper
 62 100
 64 36.0 24.9 46.3

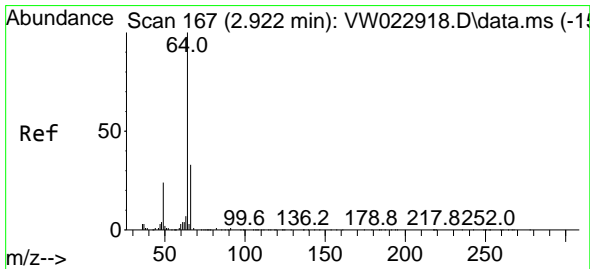
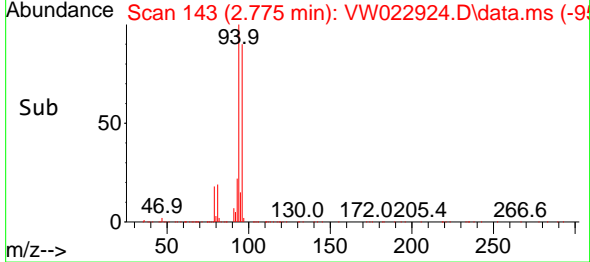
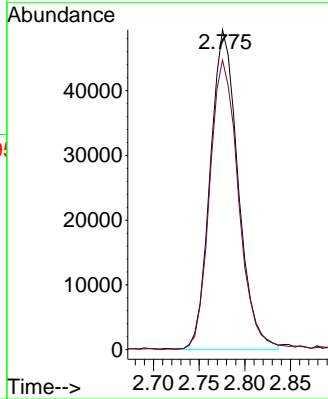
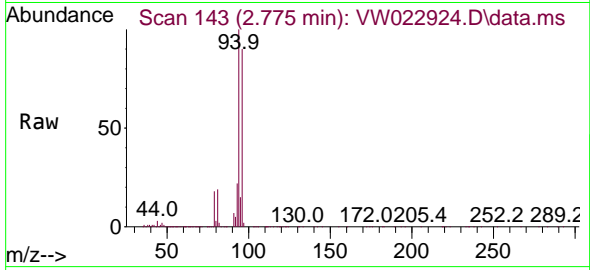




#6
 Bromomethane
 Concen: 20.873 ug/L
 RT: 2.775 min Scan# 14
 Delta R.T. -0.006 min
 Lab File: VW022924.D
 Acq: 09 May 2022 12:52

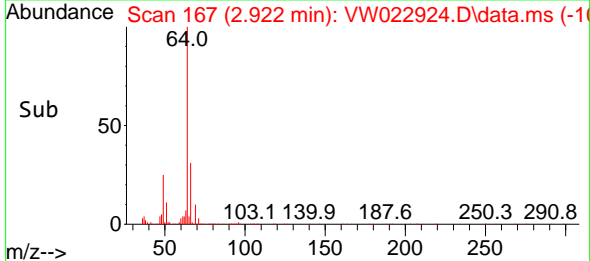
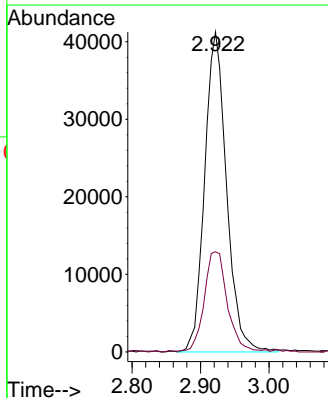
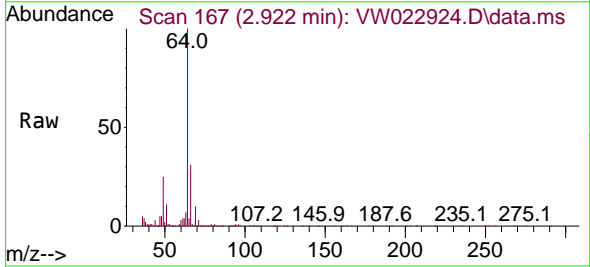
Instrument :
 MSVOA_W
 ClientSampleId :
 DBSL3MS

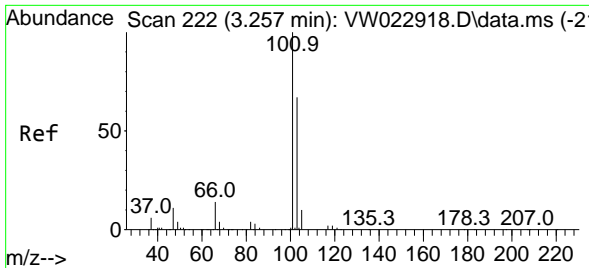
Tgt Ion: 94 Resp: 104604
 Ion Ratio Lower Upper
 94 100
 96 90.5 61.7 114.5



#8
 Chloroethane
 Concen: 24.342 ug/L
 RT: 2.922 min Scan# 167
 Delta R.T. -0.000 min
 Lab File: VW022924.D
 Acq: 09 May 2022 12:52

Tgt Ion: 64 Resp: 91639
 Ion Ratio Lower Upper
 64 100
 66 31.3 23.4 43.6

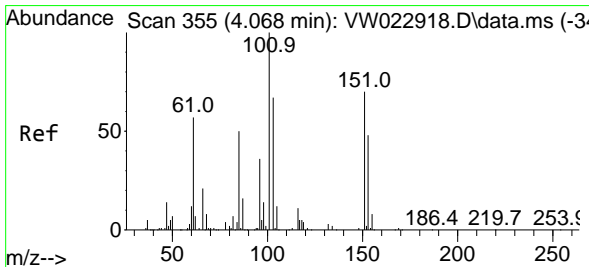
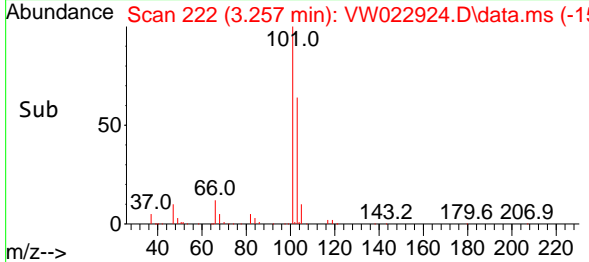
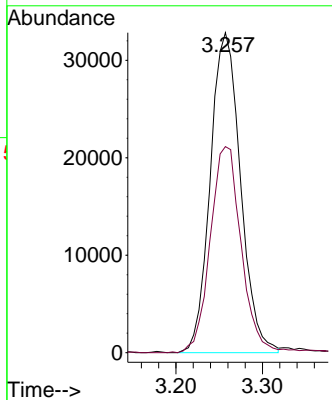
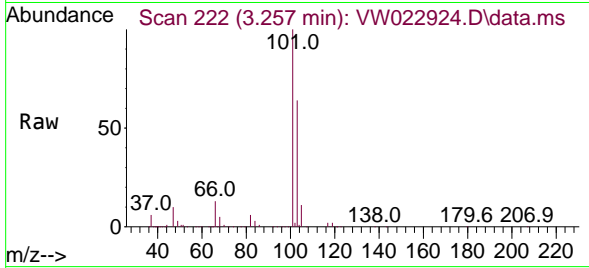




#9
 Trichlorofluoromethane
 Concen: 22.310 ug/L
 RT: 3.257 min Scan# 211
 Delta R.T. -0.000 min
 Lab File: VW022924.D
 Acq: 09 May 2022 12:52

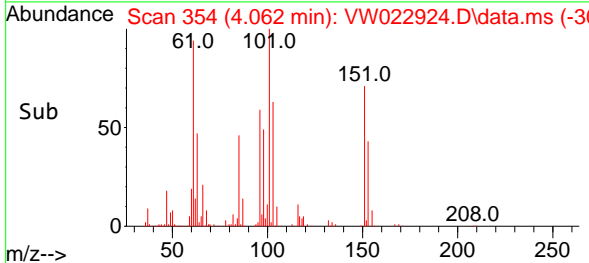
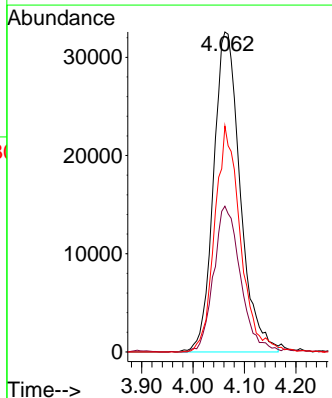
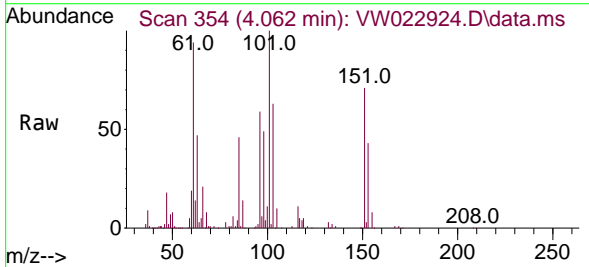
Instrument : MSVOA_W
 ClientSampleId : DBSL3MS

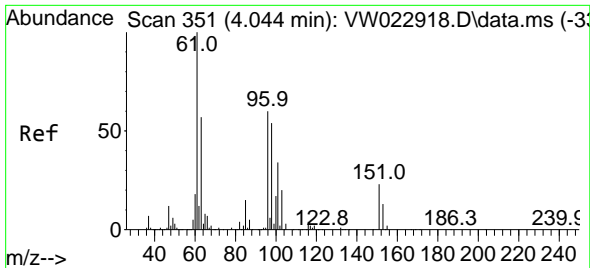
Tgt Ion:101 Resp: 79590
 Ion Ratio Lower Upper
 101 100
 103 65.9 53.9 80.9



#10
 1,1,2-Trichloro-1,2,2-trifluoroethane
 Concen: 21.988 ug/L
 RT: 4.062 min Scan# 354
 Delta R.T. -0.006 min
 Lab File: VW022924.D
 Acq: 09 May 2022 12:52

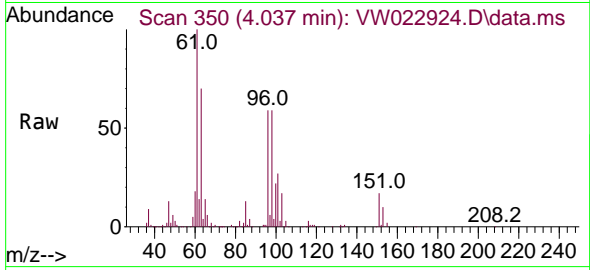
Tgt Ion:101 Resp: 117287
 Ion Ratio Lower Upper
 101 100
 85 43.3 34.3 51.5
 151 65.8 54.2 81.2



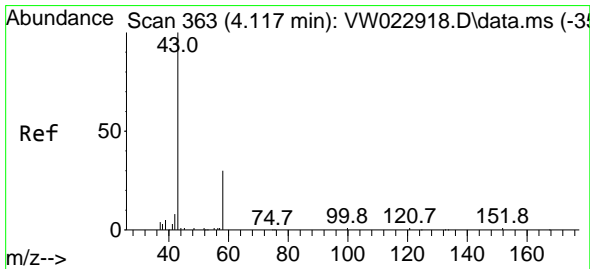
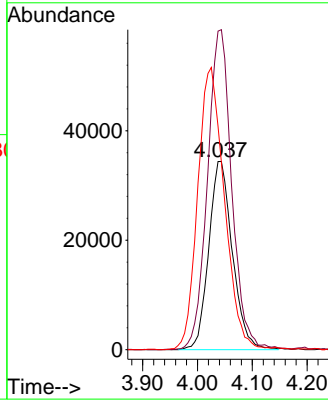
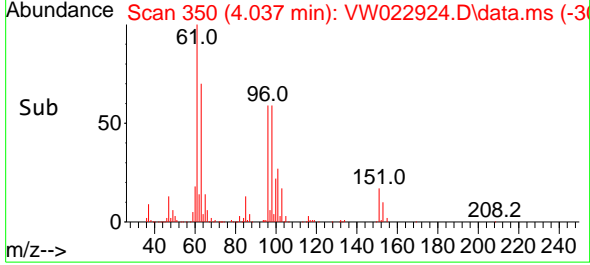


#12
 1,1-Dichloroethene
 Concen: 21.794 ug/L
 RT: 4.037 min Scan# 351
 Delta R.T. -0.006 min
 Lab File: VW022924.D
 Acq: 09 May 2022 12:52

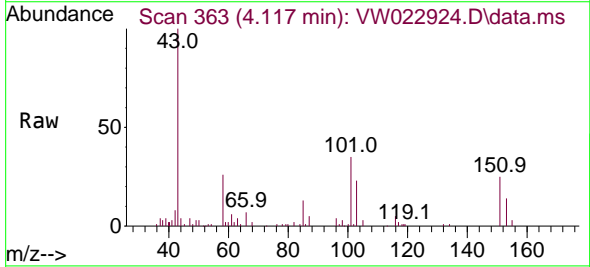
Instrument : MSVOA_W
 ClientSampleId : DBSL3MS



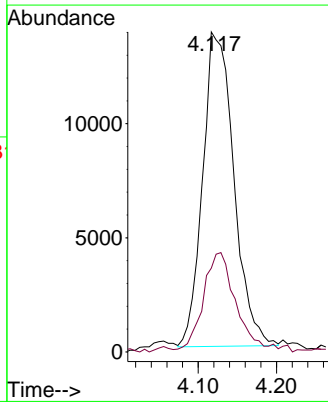
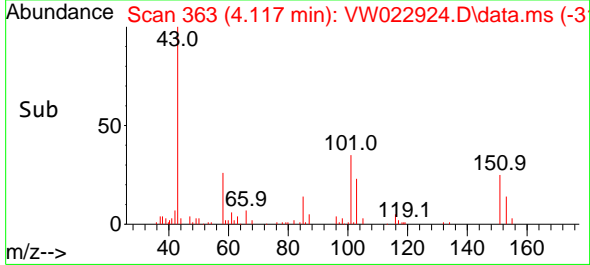
Tgt Ion: 96 Resp: 103056
 Ion Ratio Lower Upper
 96 100
 61 169.2 125.7 233.5
 63 118.7 83.4 155.0

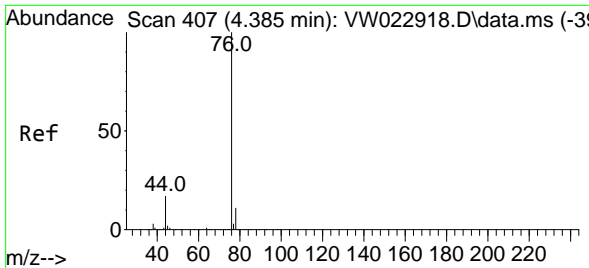


#13
 Acetone
 Concen: 35.345 ug/L
 RT: 4.117 min Scan# 363
 Delta R.T. -0.000 min
 Lab File: VW022924.D
 Acq: 09 May 2022 12:52



Tgt Ion: 43 Resp: 38111
 Ion Ratio Lower Upper
 43 100
 58 32.6 0.0 64.0

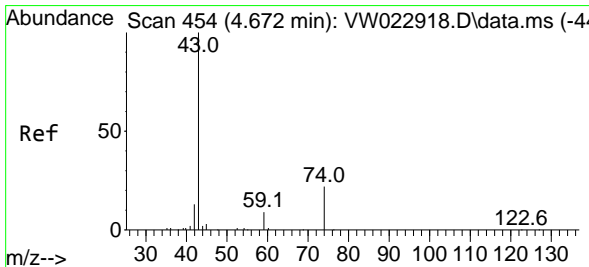
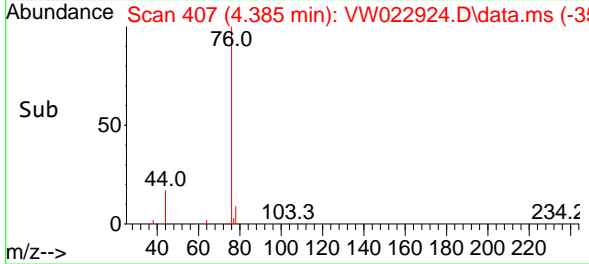
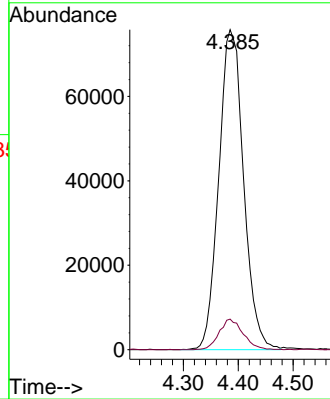
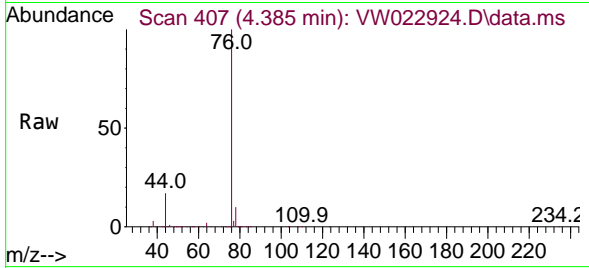




#14
 Carbon disulfide
 Concen: 18.375 ug/L
 RT: 4.385 min Scan# 407
 Delta R.T. -0.000 min
 Lab File: VW022924.D
 Acq: 09 May 2022 12:52

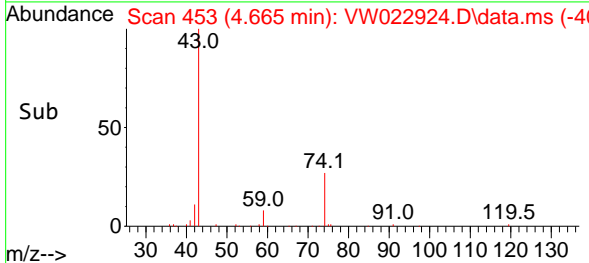
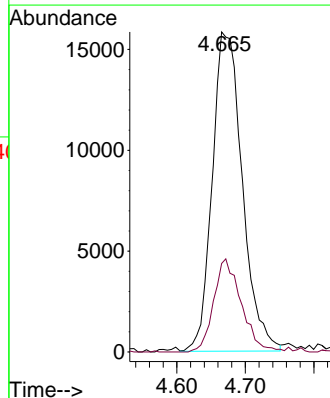
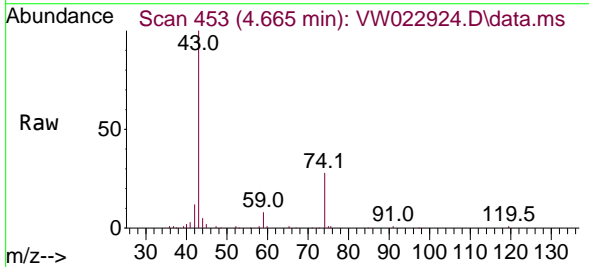
Instrument :
 MSVOA_W
 ClientSampleId :
 DBSL3MS

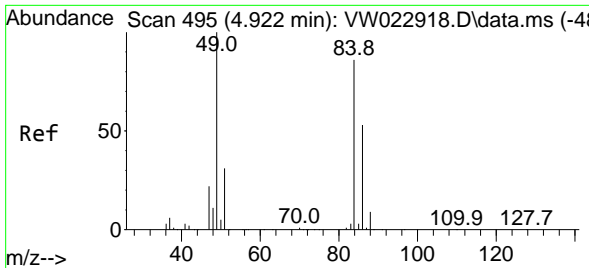
Tgt Ion: 76 Resp: 238209
 Ion Ratio Lower Upper
 76 100
 78 9.5 7.7 11.5



#15
 Methyl Acetate
 Concen: 22.238 ug/L
 RT: 4.665 min Scan# 453
 Delta R.T. -0.006 min
 Lab File: VW022924.D
 Acq: 09 May 2022 12:52

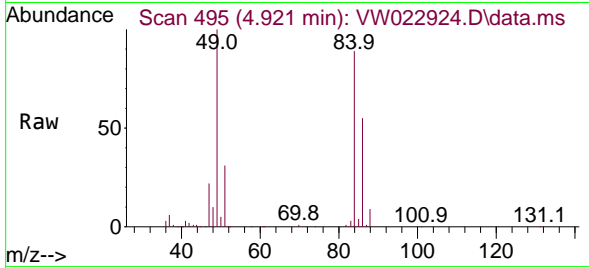
Tgt Ion: 43 Resp: 48172
 Ion Ratio Lower Upper
 43 100
 74 26.8 21.9 32.9





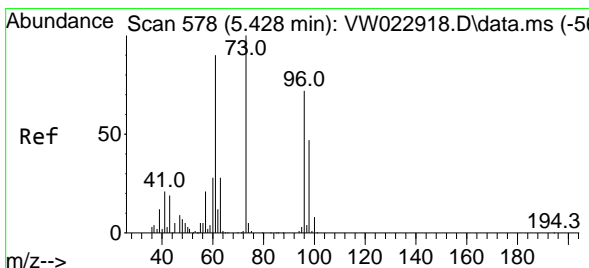
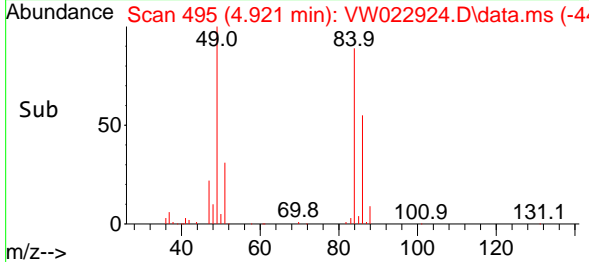
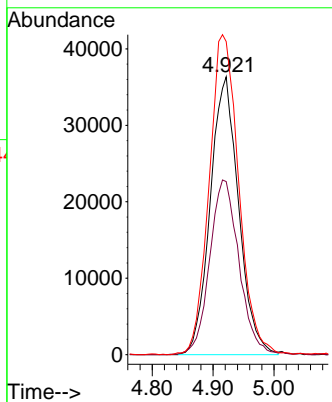
#16
 Methylene chloride
 Concen: 21.793 ug/L
 RT: 4.921 min Scan# 495
 Delta R.T. -0.000 min
 Lab File: VW022924.D
 Acq: 09 May 2022 12:52

Instrument : MSVOA_W
 ClientSampleId : DBSL3MS



Tgt Ion: 84 Resp: 117731

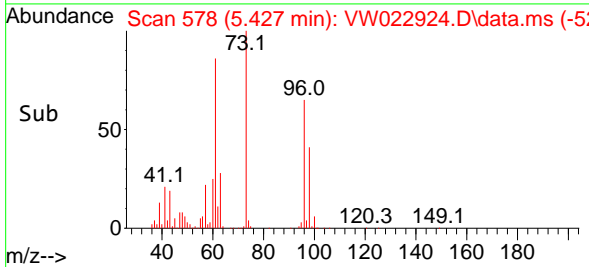
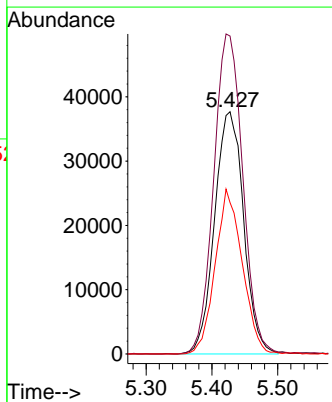
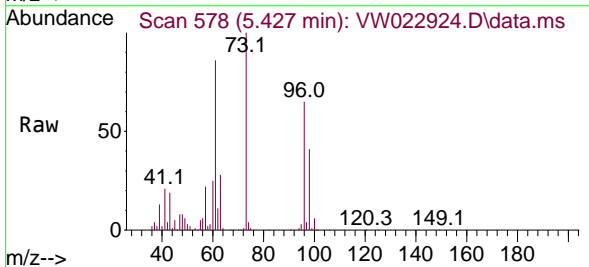
Ion	Ratio	Lower	Upper
84	100		
86	62.3	45.4	84.4
49	112.7	82.5	153.1

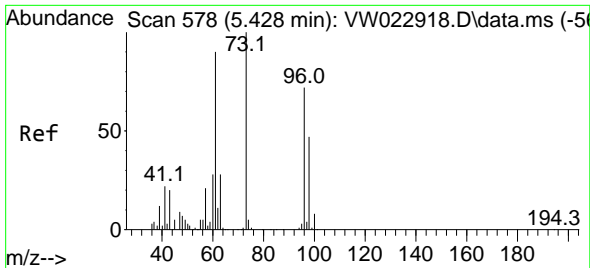


#17
 trans-1,2-Dichloroethene
 Concen: 21.771 ug/L
 RT: 5.427 min Scan# 578
 Delta R.T. -0.000 min
 Lab File: VW022924.D
 Acq: 09 May 2022 12:52

Tgt Ion: 96 Resp: 115852

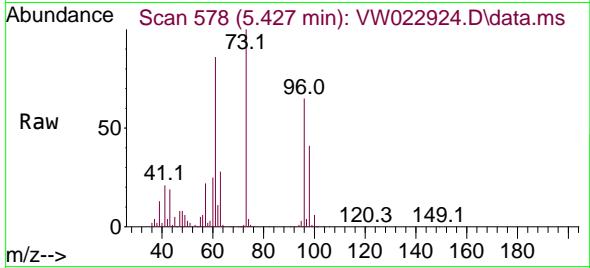
Ion	Ratio	Lower	Upper
96	100		
61	131.3	92.2	171.2
98	62.5	42.9	79.7





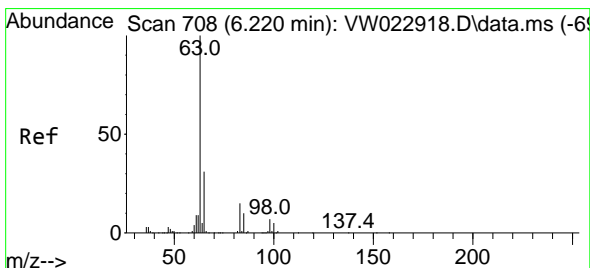
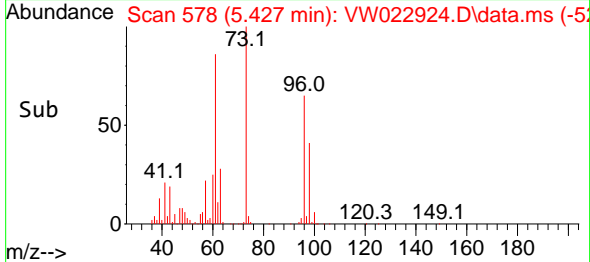
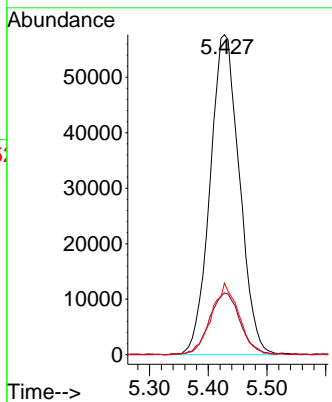
#18
 Methyl tert-butyl Ether
 Concen: 24.660 ug/L
 RT: 5.427 min Scan# 51
 Delta R.T. -0.000 min
 Lab File: VW022924.D
 Acq: 09 May 2022 12:52

Instrument : MSVOA_W
 ClientSampleId : DBSL3MS



Tgt Ion: 73 Resp: 200316

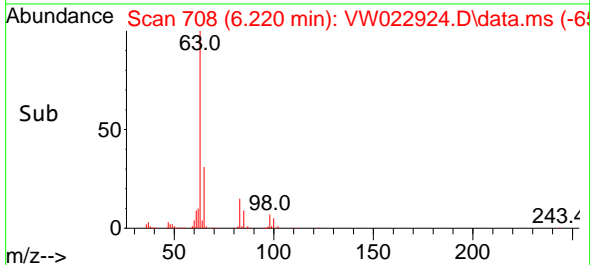
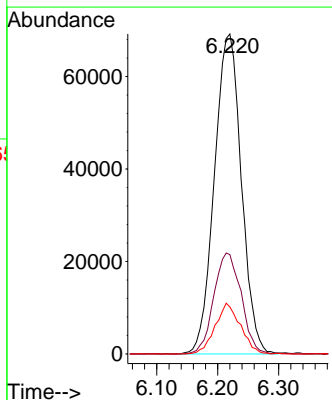
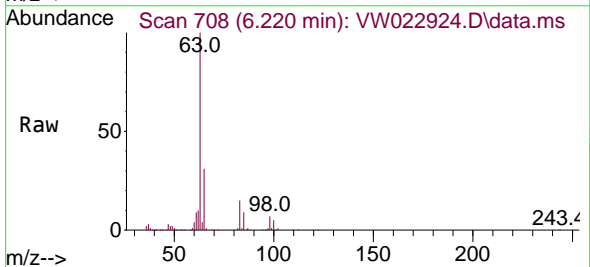
Ion	Ratio	Lower	Upper
73	100		
43	19.9	15.9	23.9
57	20.8	16.5	24.7

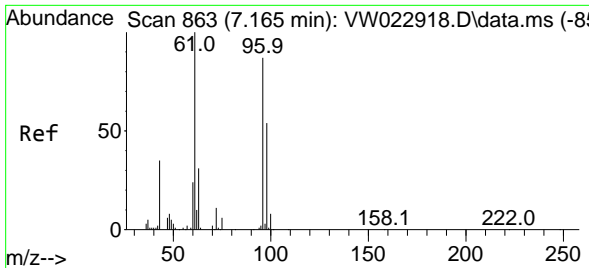


#19
 1,1-Dichloroethane
 Concen: 23.594 ug/L
 RT: 6.220 min Scan# 708
 Delta R.T. -0.000 min
 Lab File: VW022924.D
 Acq: 09 May 2022 12:52

Tgt Ion: 63 Resp: 212785

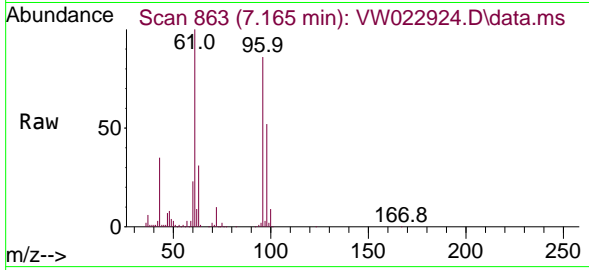
Ion	Ratio	Lower	Upper
63	100		
65	31.1	23.3	43.3
83	14.7	11.1	20.5





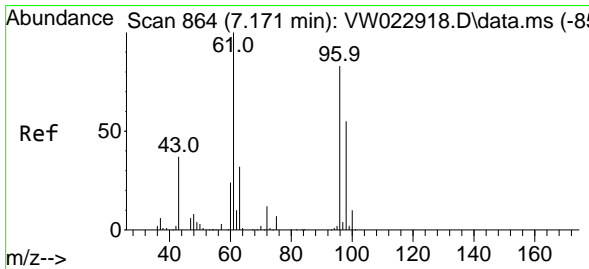
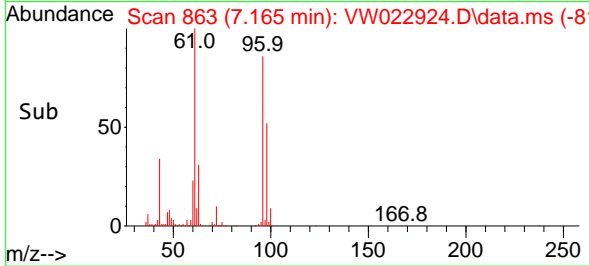
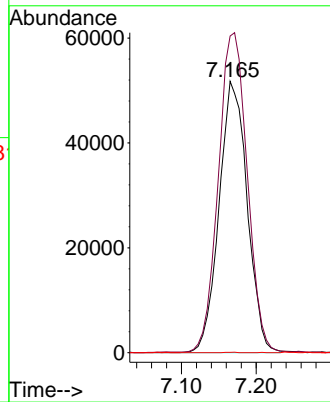
#20
 cis-1,2-Dichloroethene
 Concen: 23.694 ug/L
 RT: 7.165 min Scan# 863
 Delta R.T. -0.000 min
 Lab File: VW022924.D
 Acq: 09 May 2022 12:52

Instrument : MSVOA_W
 ClientSampleId : DBSL3MS

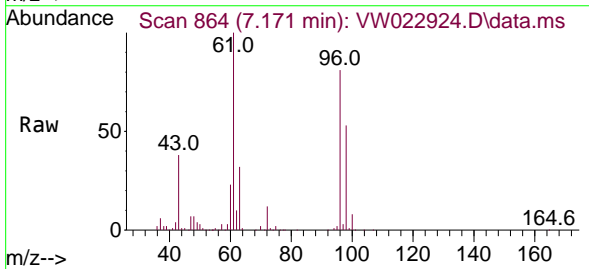


Tgt Ion: 96 Resp: 135422

Ion	Ratio	Lower	Upper
96	100		
61	116.7	84.2	156.4
68	0.1	0.1	0.1

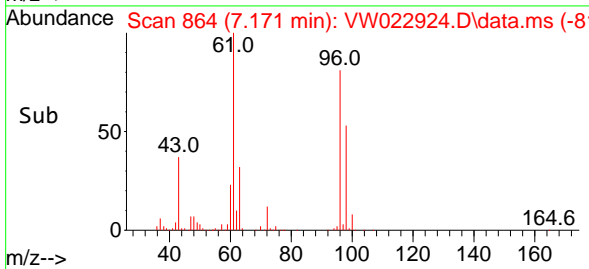
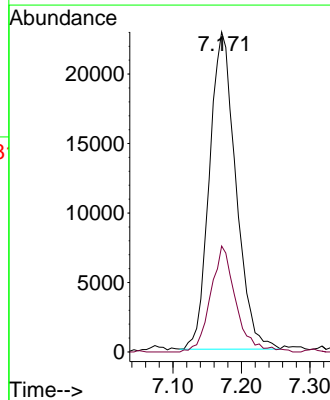


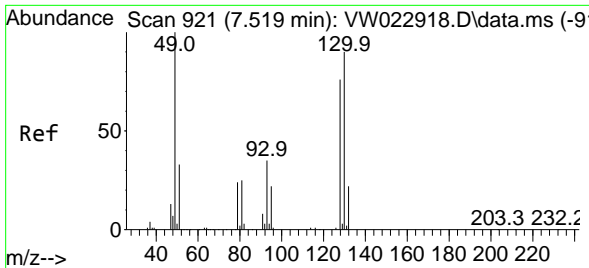
#22
 2-Butanone
 Concen: 40.635 ug/L
 RT: 7.171 min Scan# 864
 Delta R.T. -0.000 min
 Lab File: VW022924.D
 Acq: 09 May 2022 12:52



Tgt Ion: 43 Resp: 61274

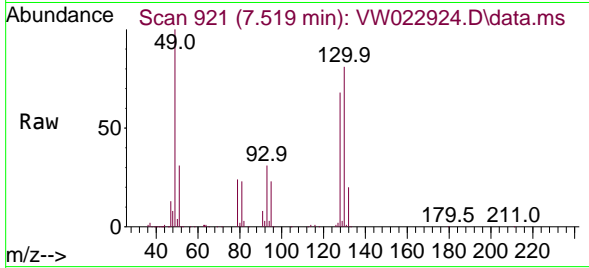
Ion	Ratio	Lower	Upper
43	100		
72	31.0	15.1	45.3



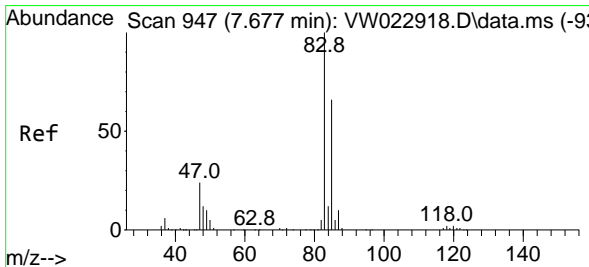
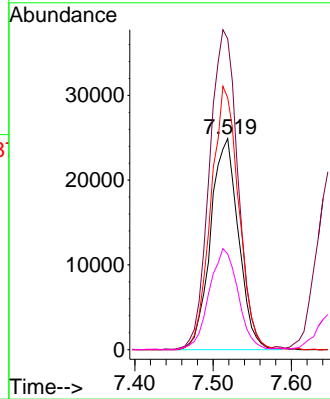
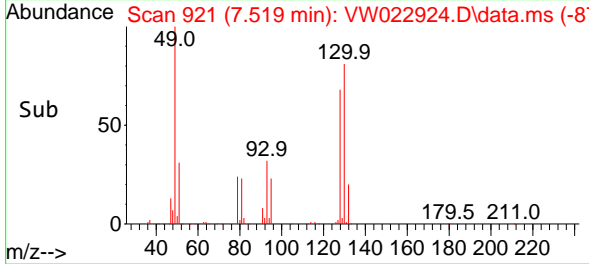


#23
 Bromochloromethane
 Concen: 23.062 ug/L
 RT: 7.519 min Scan# 919
 Delta R.T. -0.000 min
 Lab File: VW022924.D
 Acq: 09 May 2022 12:52

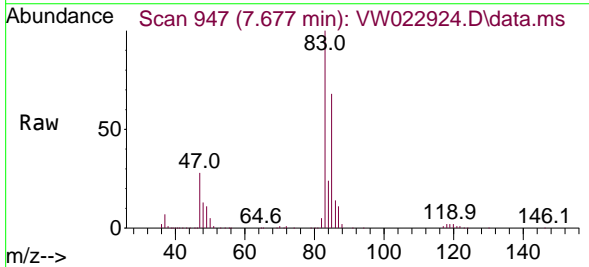
Instrument :
 MSVOA_W
 ClientSampleId :
 DBSL3MS



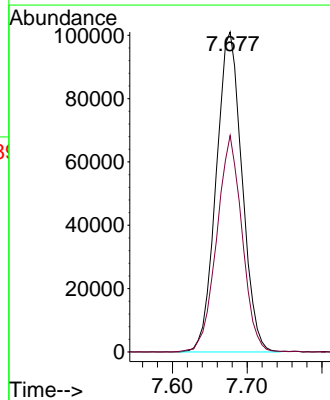
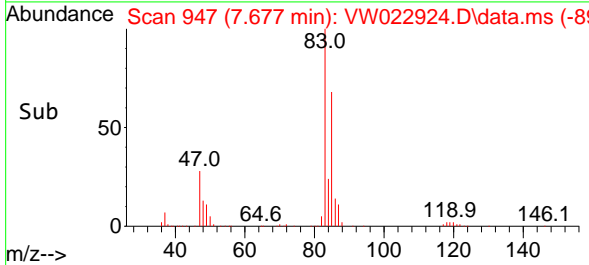
Tgt Ion:128 Resp: 61731
 Ion Ratio Lower Upper
 128 100
 49 147.3 110.0 204.4
 130 119.3 94.8 176.0
 51 45.3 40.2 60.2

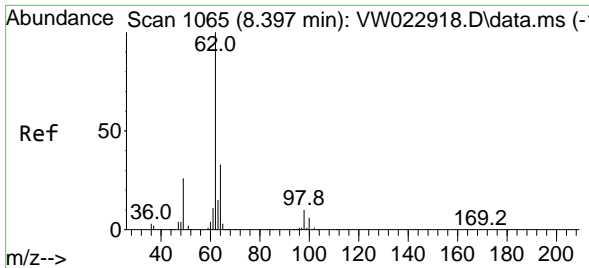


#25
 Chloroform
 Concen: 24.300 ug/L
 RT: 7.677 min Scan# 947
 Delta R.T. -0.000 min
 Lab File: VW022924.D
 Acq: 09 May 2022 12:52



Tgt Ion: 83 Resp: 242328
 Ion Ratio Lower Upper
 83 100
 85 67.7 46.6 86.6

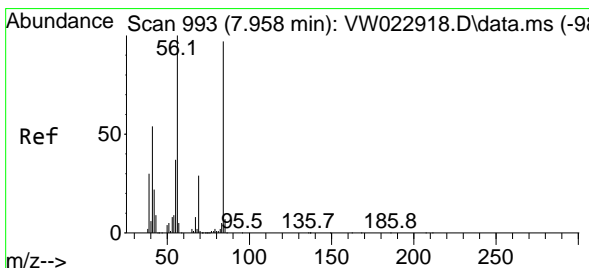
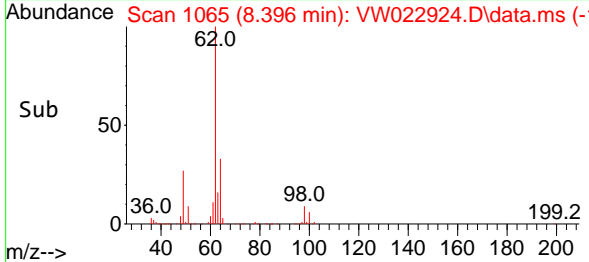
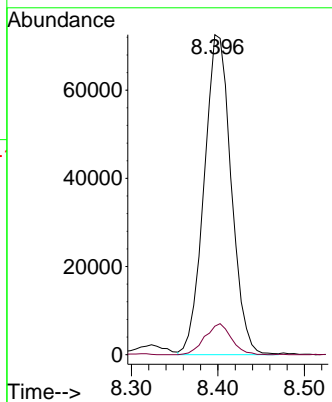
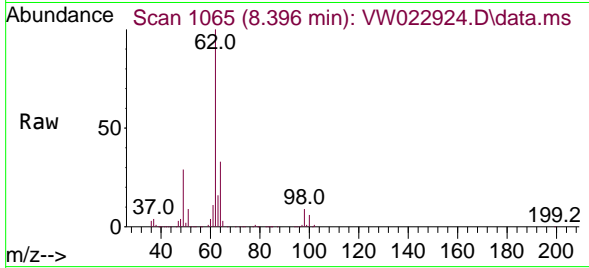




#27
 1,2-Dichloroethane
 Concen: 23.676 ug/L
 RT: 8.396 min Scan# 1065
 Delta R.T. -0.000 min
 Lab File: VW022924.D
 Acq: 09 May 2022 12:52

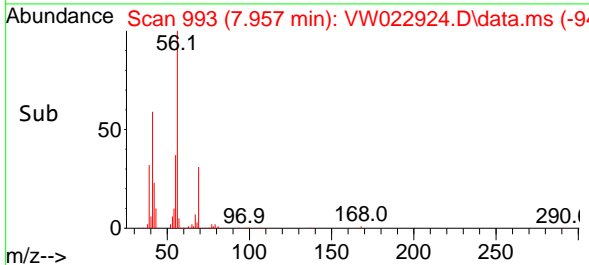
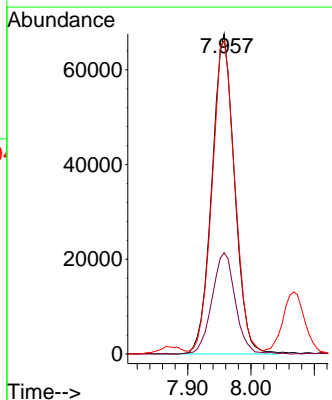
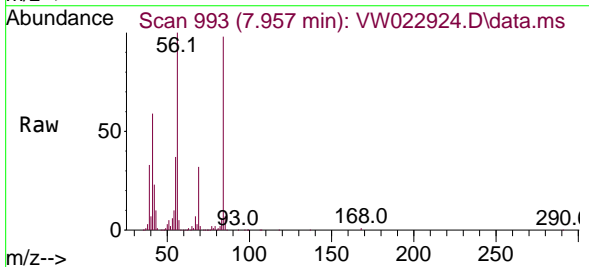
Instrument : MSVOA_W
 ClientSampleId : DBSL3MS

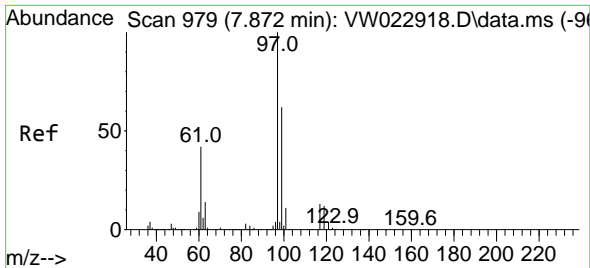
Tgt Ion: 62 Resp: 157385
 Ion Ratio Lower Upper
 62 100
 98 8.9 7.2 10.8



#29
 Cyclohexane
 Concen: 21.027 ug/L
 RT: 7.957 min Scan# 993
 Delta R.T. -0.000 min
 Lab File: VW022924.D
 Acq: 09 May 2022 12:52

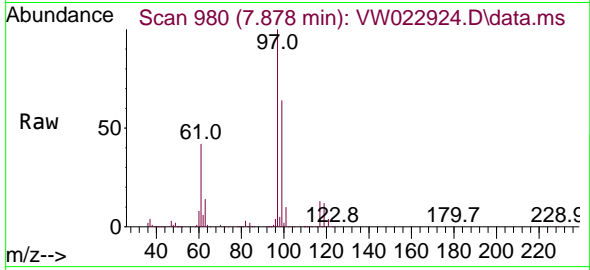
Tgt Ion: 56 Resp: 167534
 Ion Ratio Lower Upper
 56 100
 69 32.3 25.6 38.4
 84 98.7 78.2 117.4



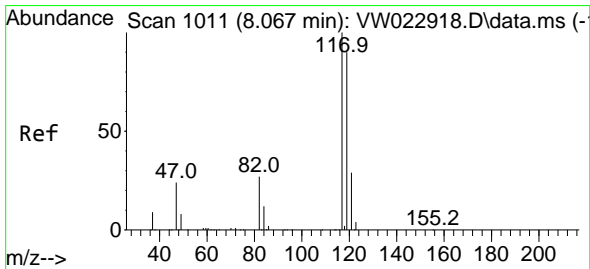
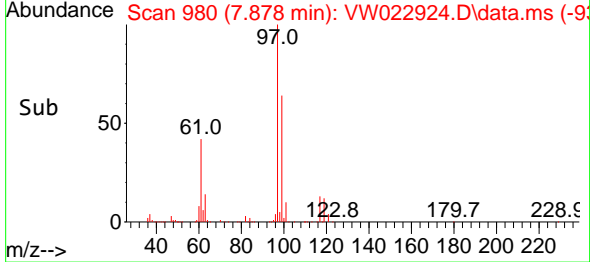
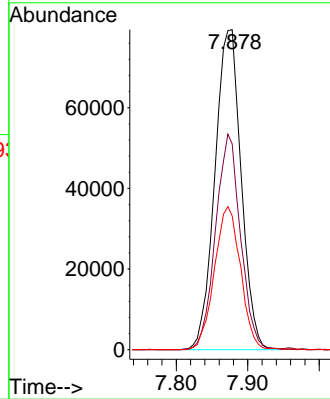


#30
 1,1,1-Trichloroethane
 Concen: 23.285 ug/L
 RT: 7.878 min Scan# 979
 Delta R.T. 0.006 min
 Lab File: VW022924.D
 Acq: 09 May 2022 12:52

Instrument : MSVOA_W
 Client Sample Id : DBSL3MS

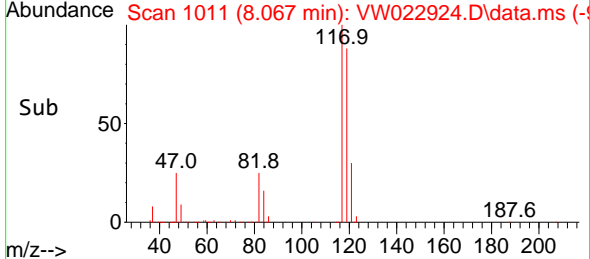
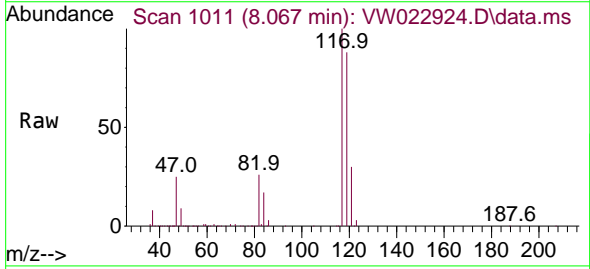
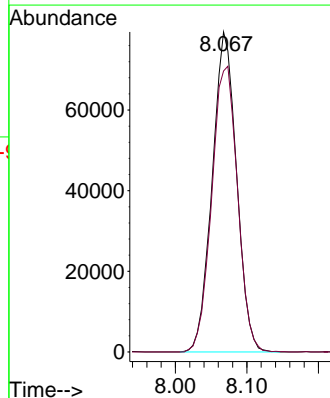


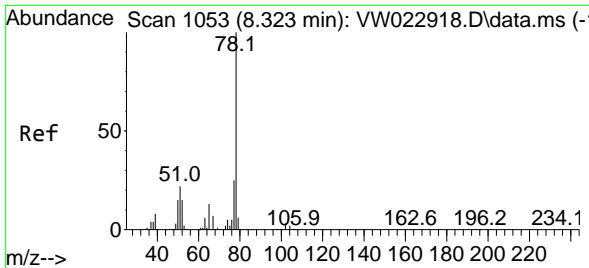
Tgt Ion: 97 Resp: 202720
 Ion Ratio Lower Upper
 97 100
 99 64.0 51.0 76.4
 61 44.4 34.8 52.2



#31
 Carbon tetrachloride
 Concen: 23.053 ug/L
 RT: 8.067 min Scan# 1011
 Delta R.T. -0.000 min
 Lab File: VW022924.D
 Acq: 09 May 2022 12:52

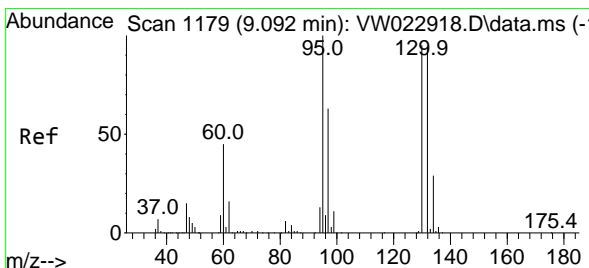
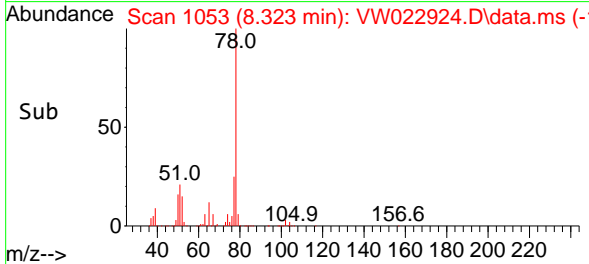
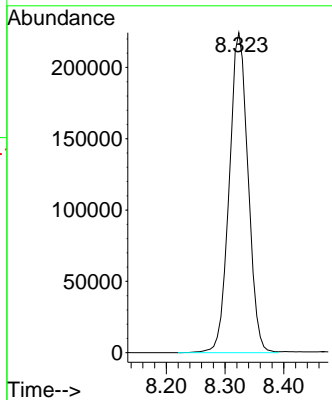
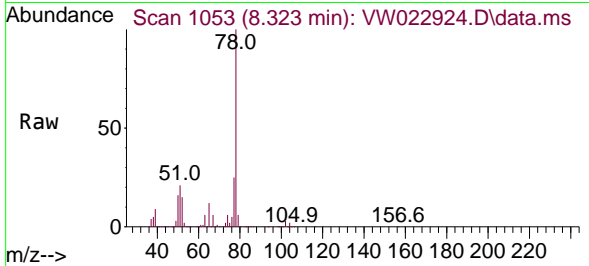
Tgt Ion: 117 Resp: 187743
 Ion Ratio Lower Upper
 117 100
 119 94.6 76.6 115.0



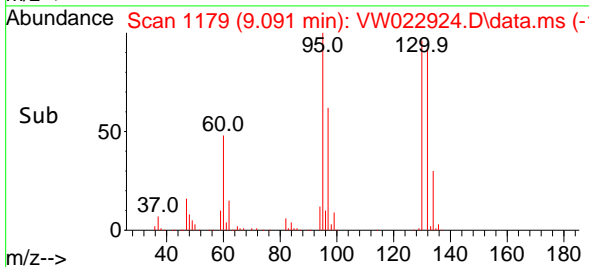
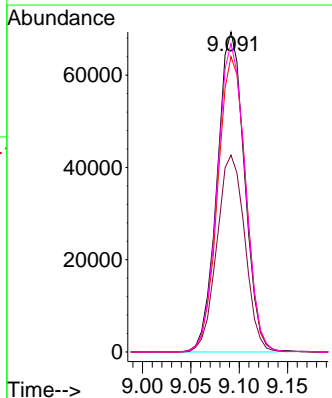
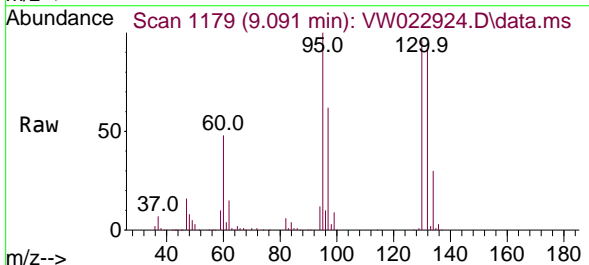


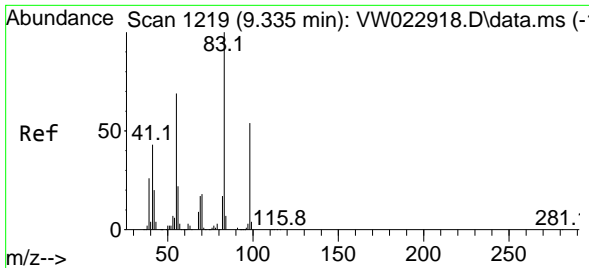
#33
 Benzene
 Concen: 23.017 ug/L
 RT: 8.323 min Scan# 1053
 Delta R.T. -0.000 min
 Lab File: VW022924.D
 Acq: 09 May 2022 12:52
 Tgt Ion: 78 Resp: 499532

Instrument : MSVOA_W
 ClientSampleId : DBSL3MS



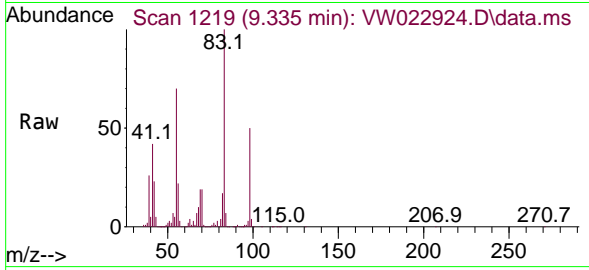
#34
 Trichloroethene
 Concen: 22.827 ug/L
 RT: 9.091 min Scan# 1179
 Delta R.T. -0.000 min
 Lab File: VW022924.D
 Acq: 09 May 2022 12:52
 Tgt Ion: 95 Resp: 136248
 Ion Ratio Lower Upper
 95 100
 97 61.5 46.1 85.7
 132 92.3 66.9 124.3
 130 96.4 69.5 129.1



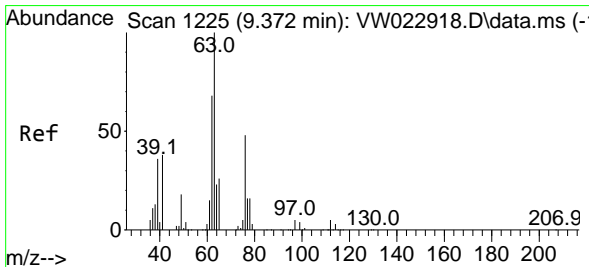
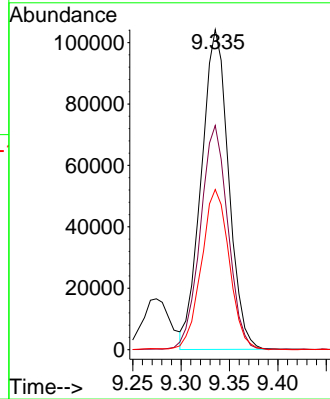
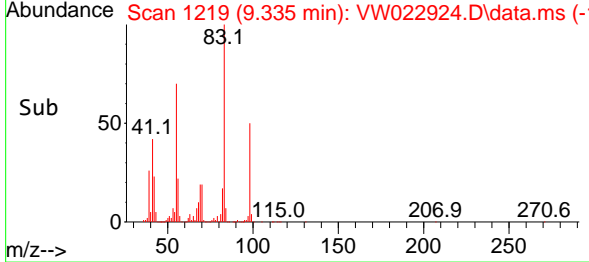


#35
 Methylcyclohexane
 Concen: 20.865 ug/L
 RT: 9.335 min Scan# 111
 Delta R.T. -0.000 min
 Lab File: VW022924.D
 Acq: 09 May 2022 12:52

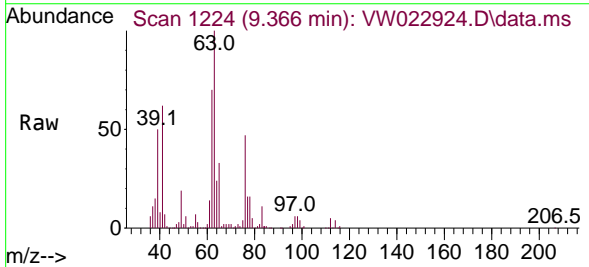
Instrument : MSVOA_W
 ClientSampleId : DBSL3MS



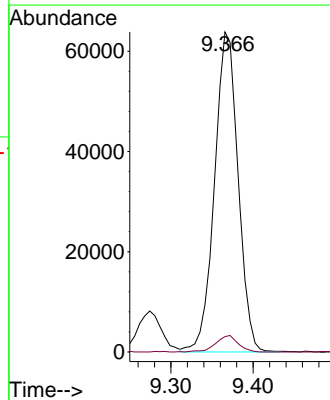
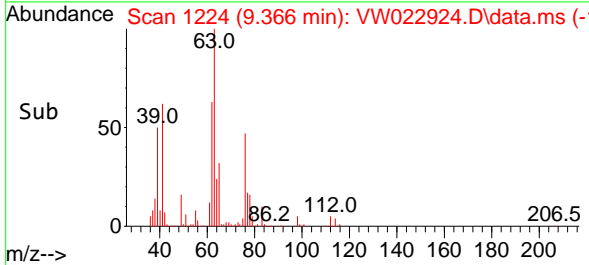
Tgt Ion: 83 Resp: 204582
 Ion Ratio Lower Upper
 83 100
 55 70.8 55.1 82.7
 98 51.2 40.4 60.6

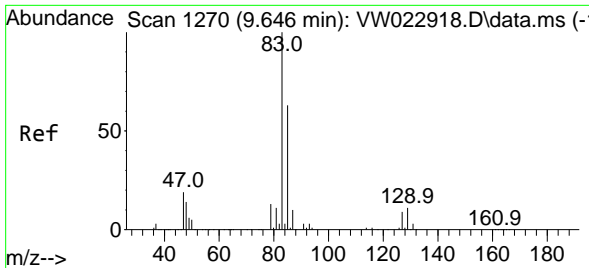


#37
 1,2-Dichloropropane
 Concen: 24.287 ug/L
 RT: 9.366 min Scan# 1224
 Delta R.T. -0.006 min
 Lab File: VW022924.D
 Acq: 09 May 2022 12:52



Tgt Ion: 63 Resp: 127557
 Ion Ratio Lower Upper
 63 100
 112 4.9 3.8 5.8



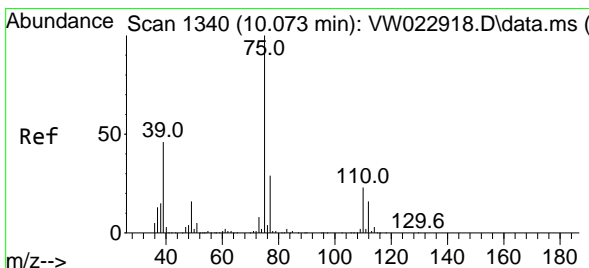
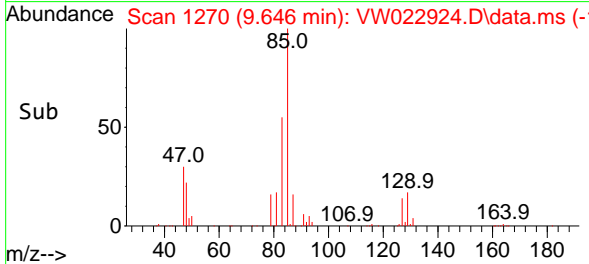
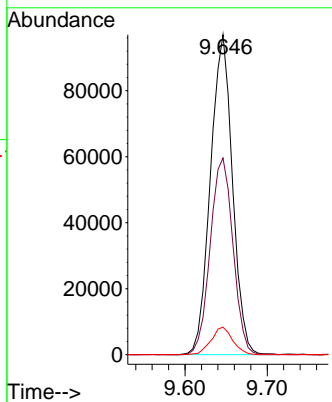
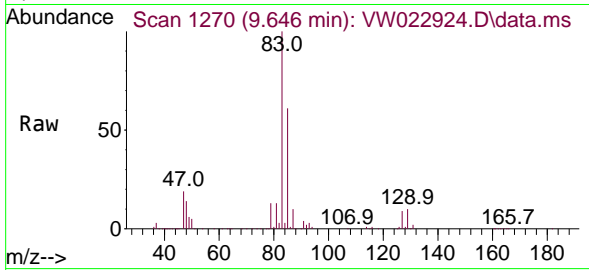


#38
 Bromodichloromethane
 Concen: 24.161 ug/L
 RT: 9.646 min Scan# 1270
 Delta R.T. -0.000 min
 Lab File: VW022924.D
 Acq: 09 May 2022 12:52

Instrument : MSVOA_W
 ClientSampleId : DBSL3MS

Tgt Ion: 83 Resp: 180238

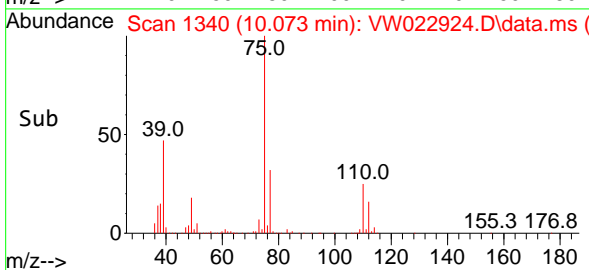
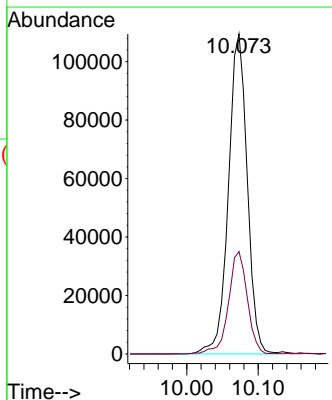
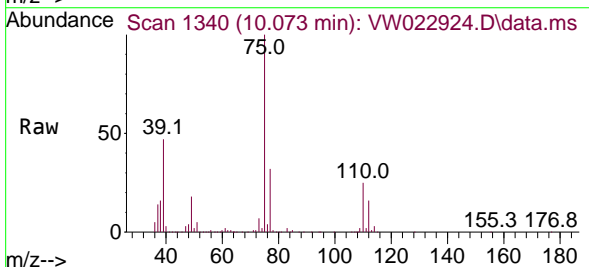
Ion	Ratio	Lower	Upper
83	100		
85	61.4	43.5	80.7
127	8.6	7.1	10.7

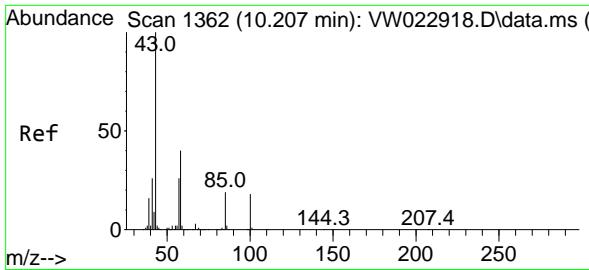


#39
 cis-1,3-Dichloropropene
 Concen: 24.554 ug/L
 RT: 10.073 min Scan# 1340
 Delta R.T. -0.000 min
 Lab File: VW022924.D
 Acq: 09 May 2022 12:52

Tgt Ion: 75 Resp: 199958

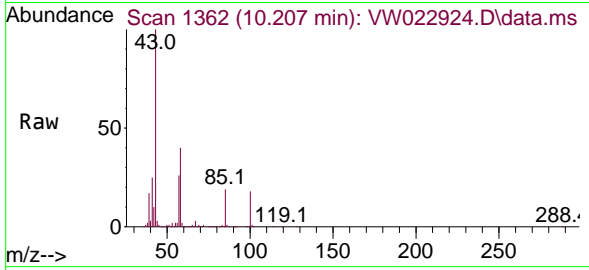
Ion	Ratio	Lower	Upper
75	100		
77	32.0	22.1	41.1





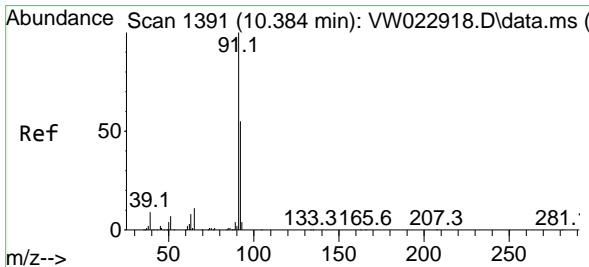
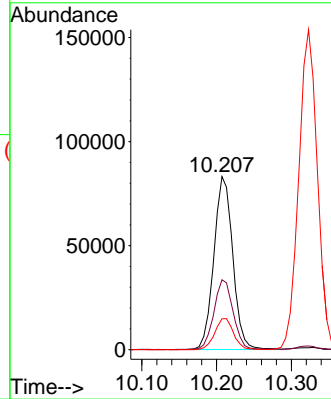
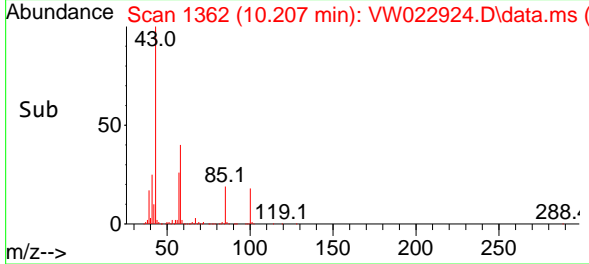
#40
 4-Methyl-2-pentanone
 Concen: 44.259 ug/L
 RT: 10.207 min Scan# 1362
 Delta R.T. -0.000 min
 Lab File: VW022924.D
 Acq: 09 May 2022 12:52

Instrument : MSVOA_W
 ClientSampleId : DBSL3MS

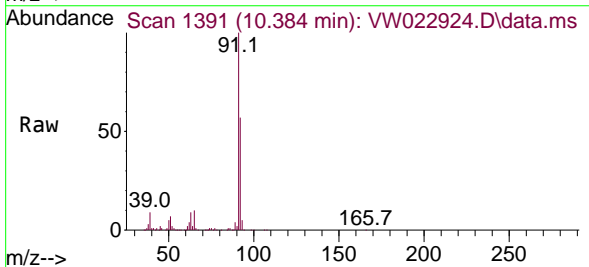


Tgt Ion: 43 Resp: 146515

Ion	Ratio	Lower	Upper
43	100		
58	41.1	31.4	47.2
100	17.9	14.2	21.4

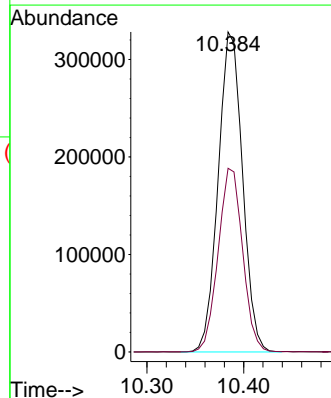
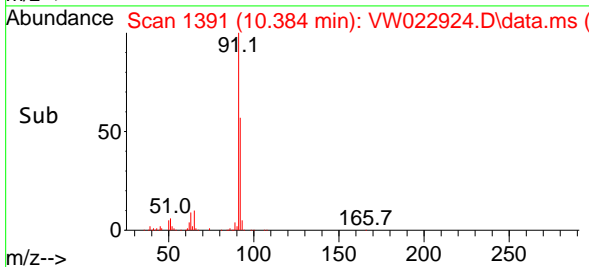


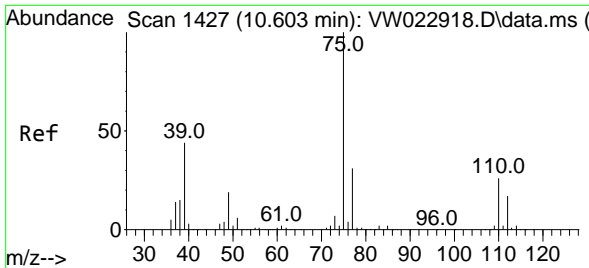
#42
 Toluene
 Concen: 23.531 ug/L
 RT: 10.384 min Scan# 1391
 Delta R.T. -0.000 min
 Lab File: VW022924.D
 Acq: 09 May 2022 12:52



Tgt Ion: 91 Resp: 572324

Ion	Ratio	Lower	Upper
91	100		
92	57.4	41.6	77.2

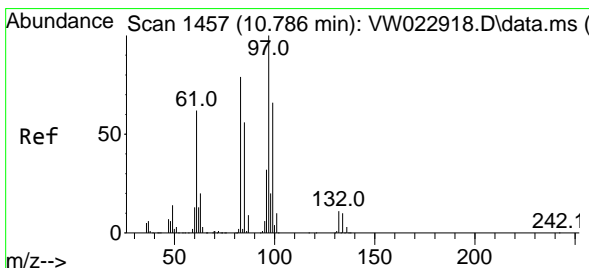
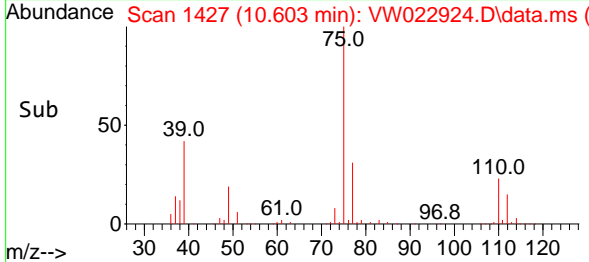
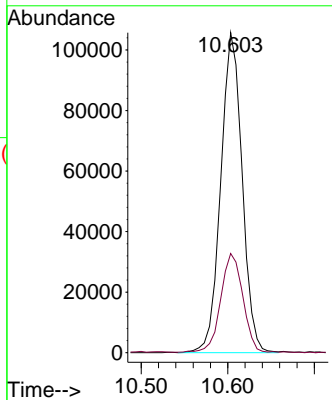
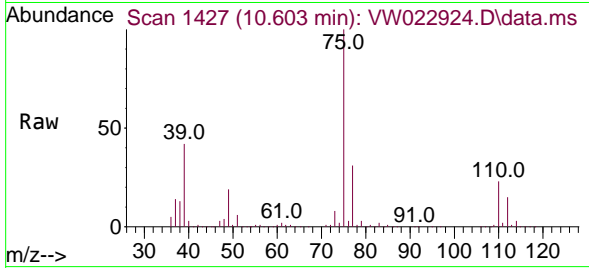




#44
 trans-1,3-Dichloropropene
 Concen: 24.925 ug/L
 RT: 10.603 min Scan# 1427
 Delta R.T. -0.000 min
 Lab File: VW022924.D
 Acq: 09 May 2022 12:52

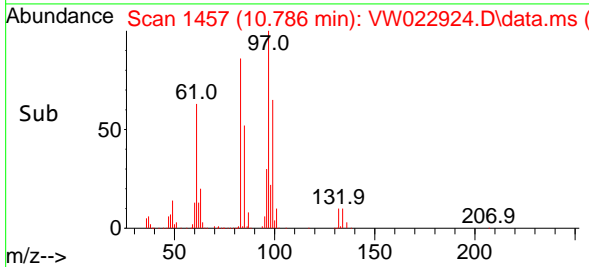
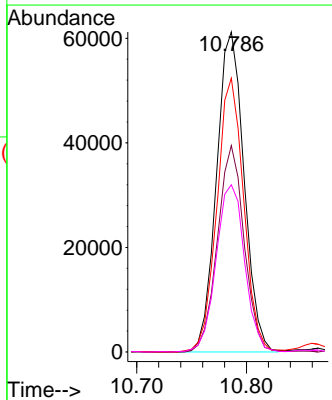
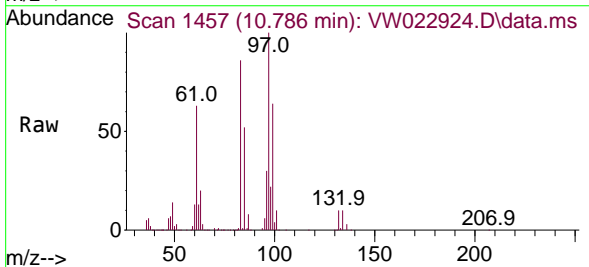
Instrument : MSVOA_W
 ClientSampleId : DBSL3MS

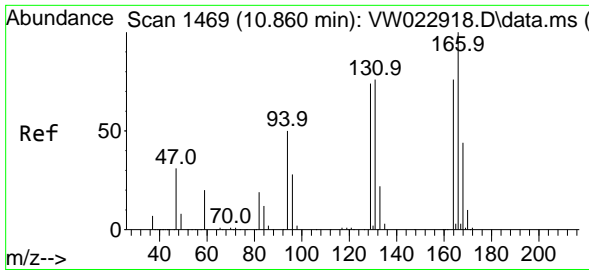
Tgt Ion: 75 Resp: 181177
 Ion Ratio Lower Upper
 75 100
 77 31.0 22.0 40.8



#45
 1,1,2-Trichloroethane
 Concen: 24.293 ug/L
 RT: 10.786 min Scan# 1457
 Delta R.T. -0.000 min
 Lab File: VW022924.D
 Acq: 09 May 2022 12:52

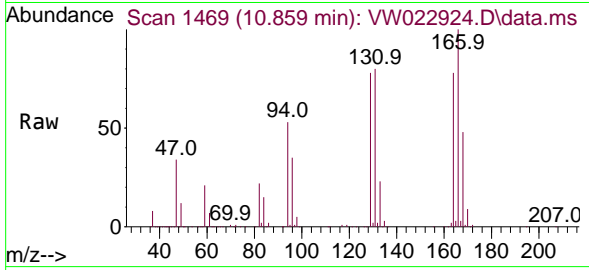
Tgt Ion: 97 Resp: 106660
 Ion Ratio Lower Upper
 97 100
 99 64.5 44.7 82.9
 83 85.6 58.4 108.4
 85 52.2 38.7 71.9



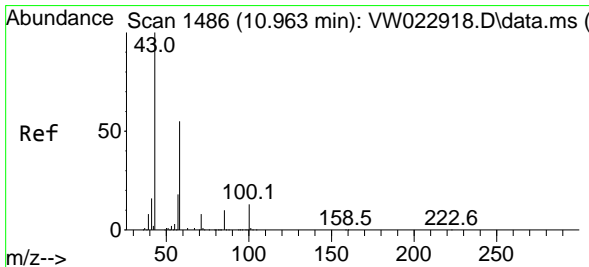
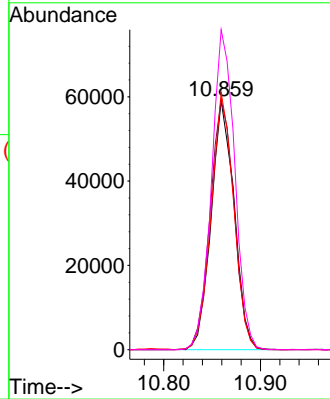
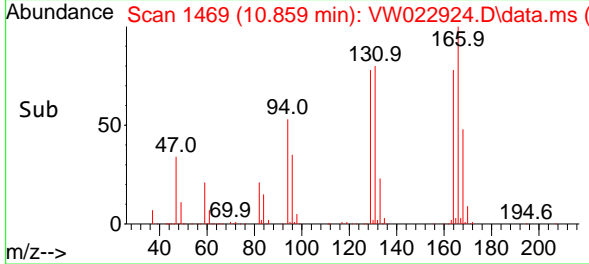


#46
 Tetrachloroethene
 Concen: 21.742 ug/L
 RT: 10.859 min Scan# 1469
 Delta R.T. -0.000 min
 Lab File: VW022924.D
 Acq: 09 May 2022 12:52

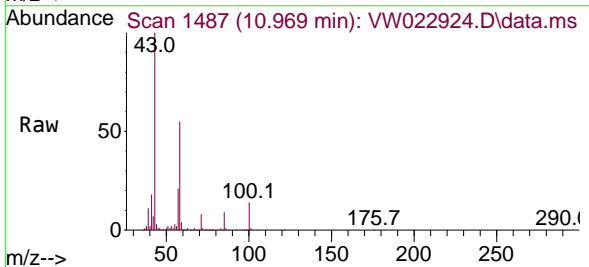
Instrument : MSVOA_W
 ClientSampleId : DBSL3MS



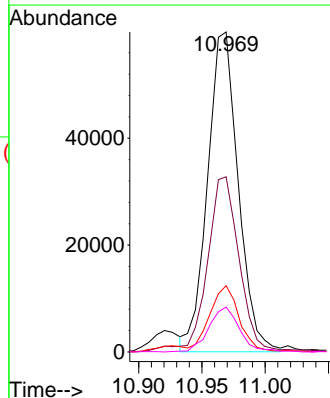
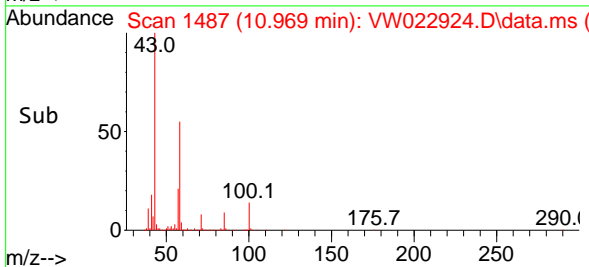
Tgt Ion:164 Resp: 97522
 Ion Ratio Lower Upper
 164 100
 129 100.3 76.9 142.7
 131 103.2 75.1 139.5
 166 128.4 96.0 178.2

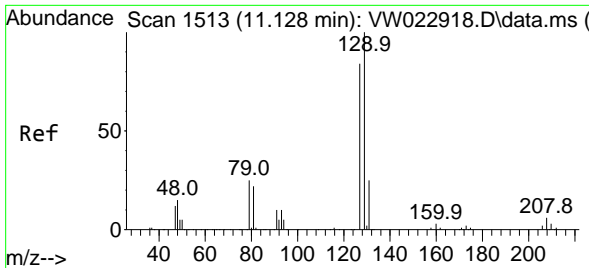


#48
 2-Hexanone
 Concen: 45.679 ug/L
 RT: 10.969 min Scan# 1487
 Delta R.T. 0.006 min
 Lab File: VW022924.D
 Acq: 09 May 2022 12:52



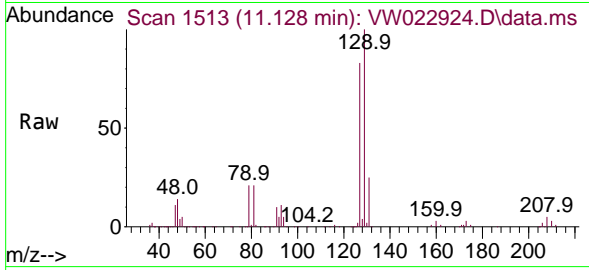
Tgt Ion: 43 Resp: 101035
 Ion Ratio Lower Upper
 43 100
 58 55.5 45.9 68.9
 57 19.8 16.2 24.2
 100 13.9 10.7 16.1



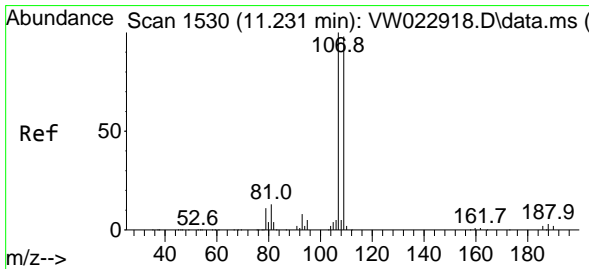
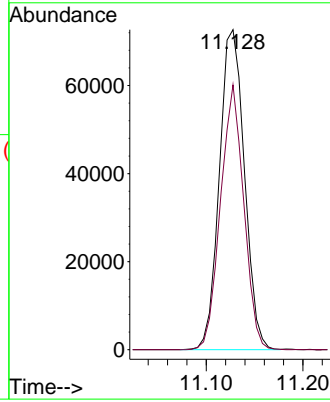
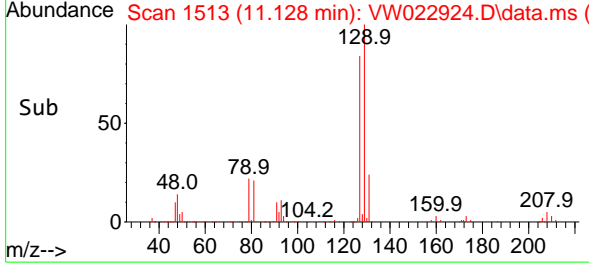


#49
 Dibromochloromethane
 Concen: 24.714 ug/L
 RT: 11.128 min Scan# 1513
 Delta R.T. -0.000 min
 Lab File: VW022924.D
 Acq: 09 May 2022 12:52

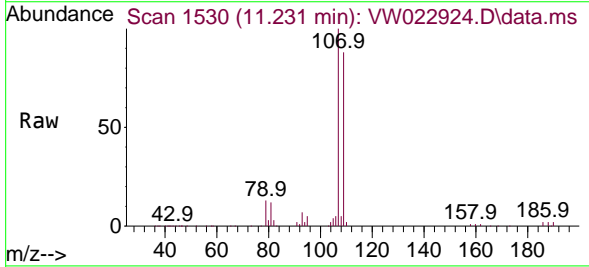
Instrument : MSVOA_W
 ClientSampleId : DBSL3MS



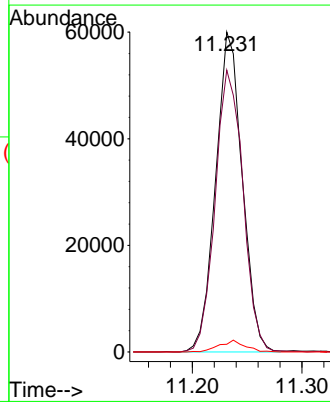
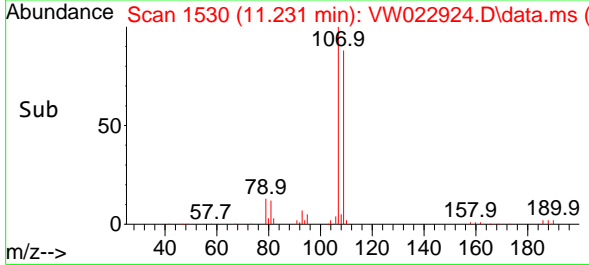
Tgt Ion:129 Resp: 130595
 Ion Ratio Lower Upper
 129 100
 127 82.7 53.8 100.0

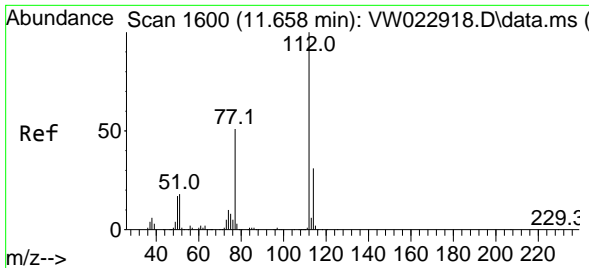


#50
 1,2-Dibromoethane
 Concen: 22.994 ug/L
 RT: 11.231 min Scan# 1530
 Delta R.T. -0.000 min
 Lab File: VW022924.D
 Acq: 09 May 2022 12:52



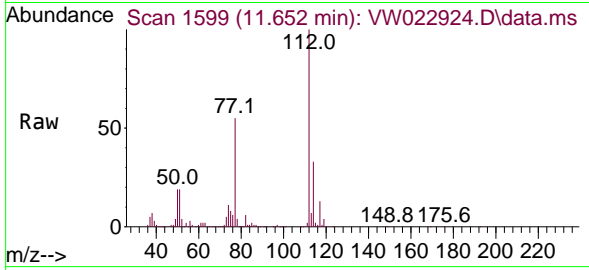
Tgt Ion:107 Resp: 101372
 Ion Ratio Lower Upper
 107 100
 109 88.1 67.5 125.4
 188 2.4 2.9 4.3#





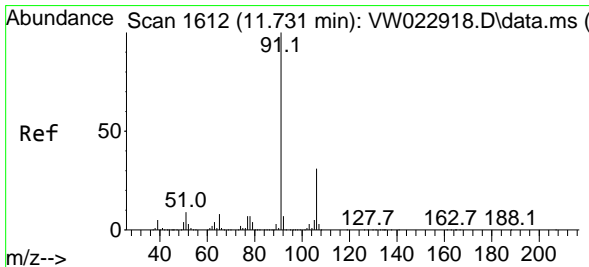
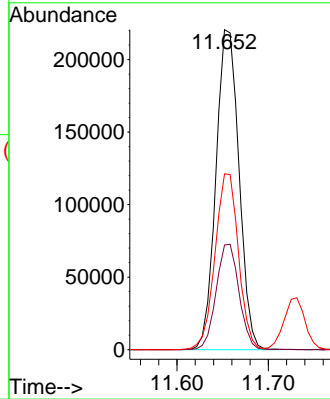
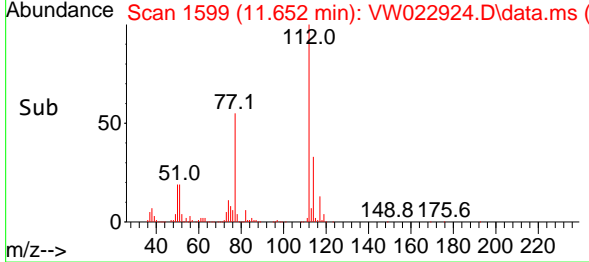
#51
 Chlorobenzene
 Concen: 24.138 ug/L
 RT: 11.652 min Scan# 11
 Delta R.T. -0.006 min
 Lab File: VW022924.D
 Acq: 09 May 2022 12:52

Instrument :
 MSVOA_W
 ClientSampleId :
 DBSL3MS

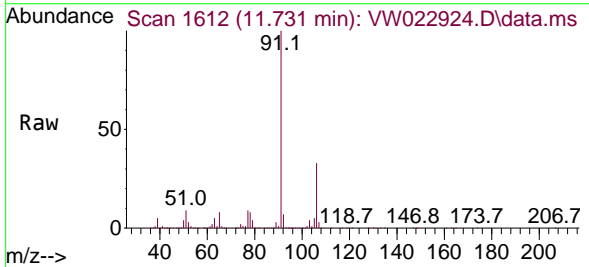


Tgt Ion:112 Resp: 387055

Ion	Ratio	Lower	Upper
112	100		
114	32.7	22.0	41.0
77	54.9	42.6	63.8

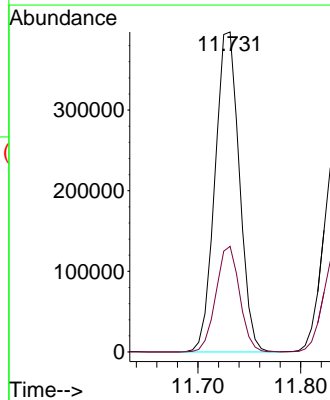
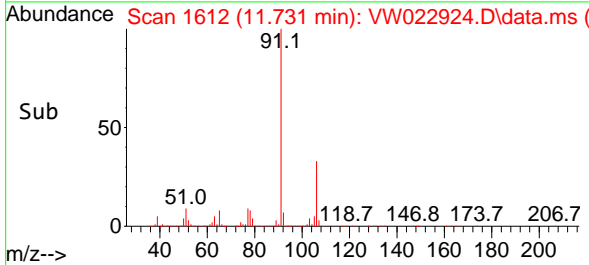


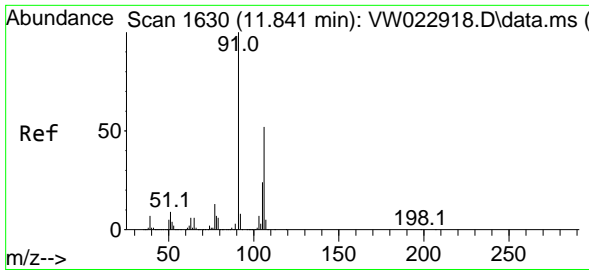
#52
 Ethylbenzene
 Concen: 24.118 ug/L
 RT: 11.731 min Scan# 1612
 Delta R.T. -0.000 min
 Lab File: VW022924.D
 Acq: 09 May 2022 12:52



Tgt Ion: 91 Resp: 652618

Ion	Ratio	Lower	Upper
91	100		
106	33.0	22.3	41.3

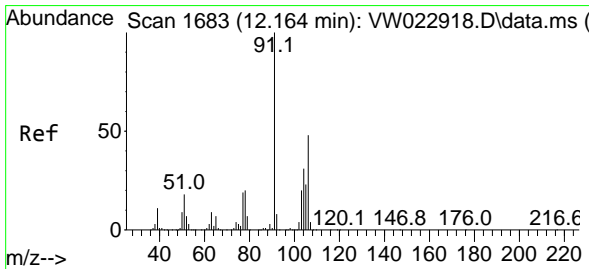
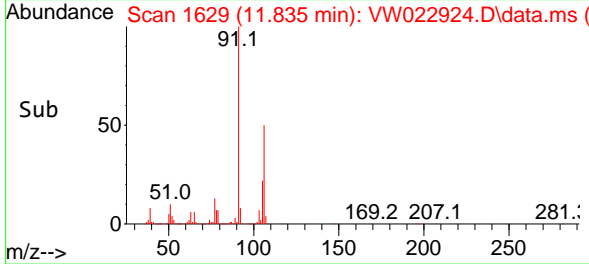
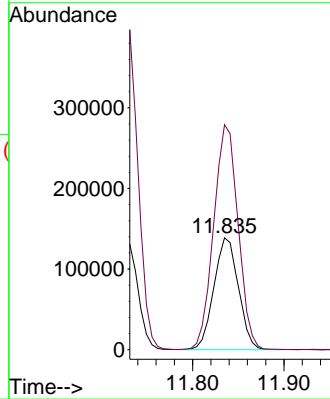
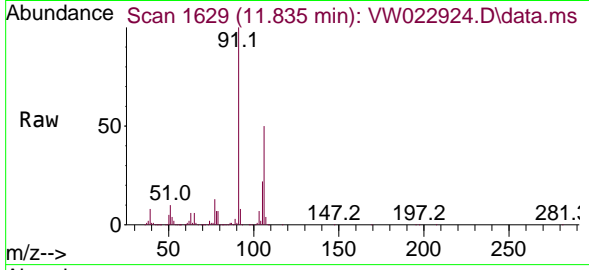




#53
 m,p-Xylene
 Concen: 24.236 ug/L
 RT: 11.835 min Scan# 1
 Delta R.T. -0.006 min
 Lab File: VW022924.D
 Acq: 09 May 2022 12:52

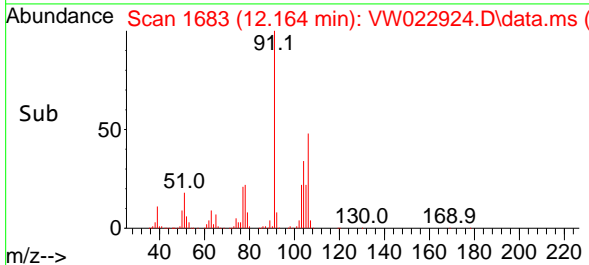
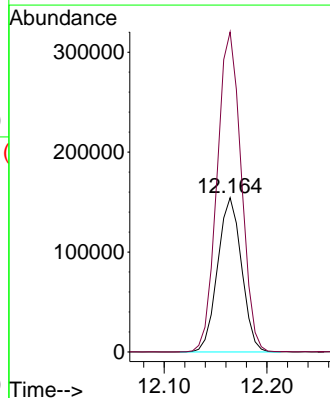
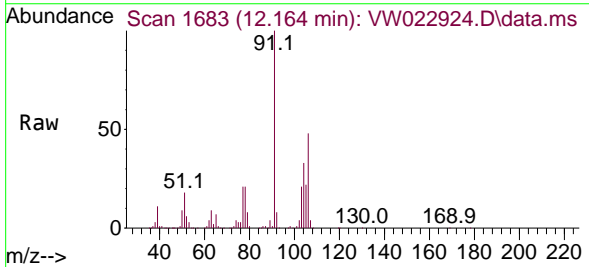
Instrument :
 MSVOA_W
 ClientSampleId :
 DBSL3MS

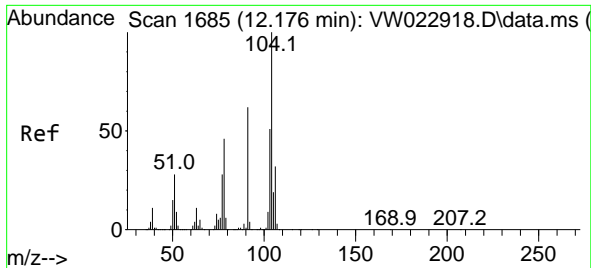
Tgt Ion:106 Resp: 258406
 Ion Ratio Lower Upper
 106 100
 91 201.2 136.8 254.0



#54
 o-Xylene
 Concen: 24.396 ug/L
 RT: 12.164 min Scan# 1683
 Delta R.T. -0.000 min
 Lab File: VW022924.D
 Acq: 09 May 2022 12:52

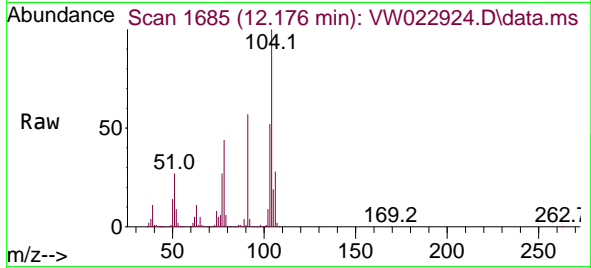
Tgt Ion:106 Resp: 249606
 Ion Ratio Lower Upper
 106 100
 91 207.4 147.2 273.4



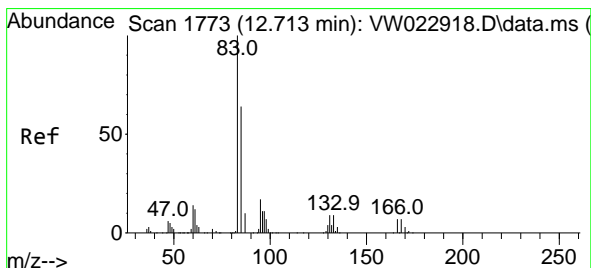
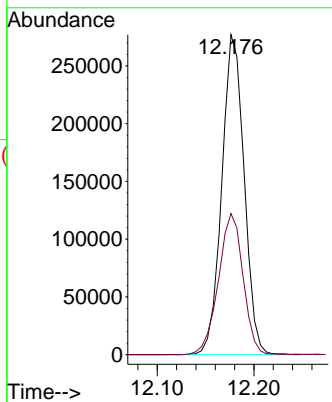
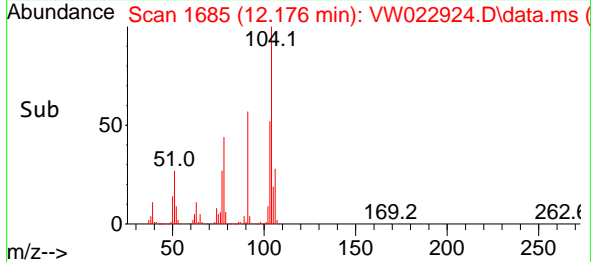


#55
 Styrene
 Concen: 25.467 ug/L
 RT: 12.176 min Scan# 1685
 Delta R.T. -0.000 min
 Lab File: VW022924.D
 Acq: 09 May 2022 12:52

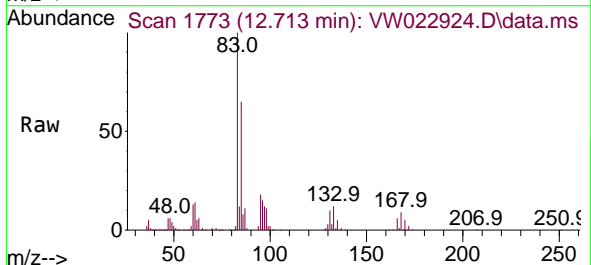
Instrument : MSVOA_W
 ClientSampleId : DBSL3MS



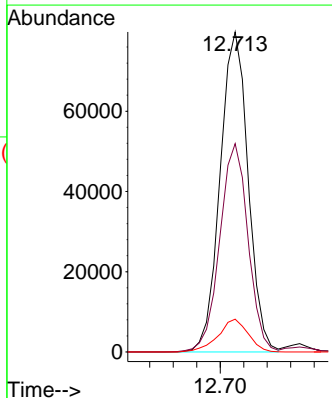
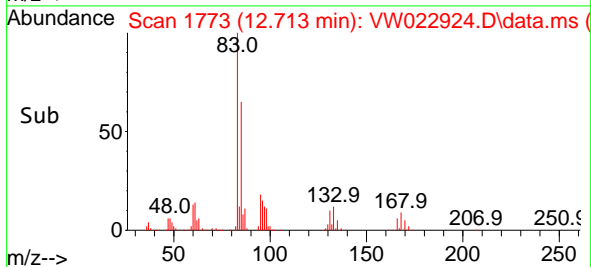
Tgt Ion:104 Resp: 442765
 Ion Ratio Lower Upper
 104 100
 78 44.1 32.3 59.9

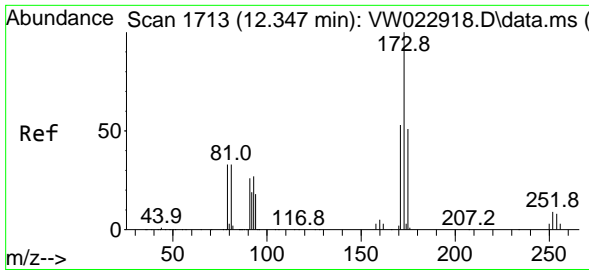


#57
 1,1,2,2-Tetrachloroethane
 Concen: 24.097 ug/L
 RT: 12.713 min Scan# 1773
 Delta R.T. -0.000 min
 Lab File: VW022924.D
 Acq: 09 May 2022 12:52



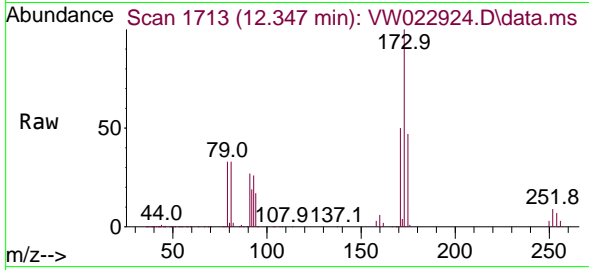
Tgt Ion: 83 Resp: 132145
 Ion Ratio Lower Upper
 83 100
 85 65.1 47.5 88.1
 131 10.2 8.7 13.1



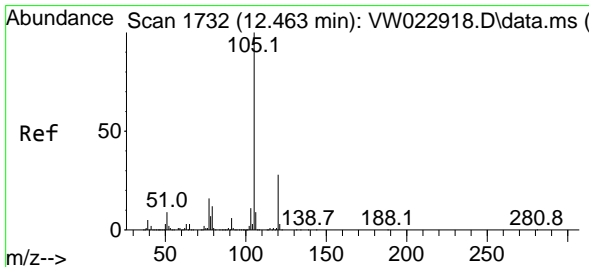
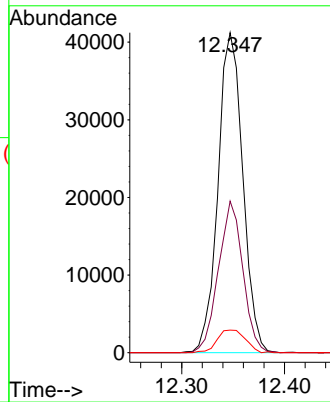
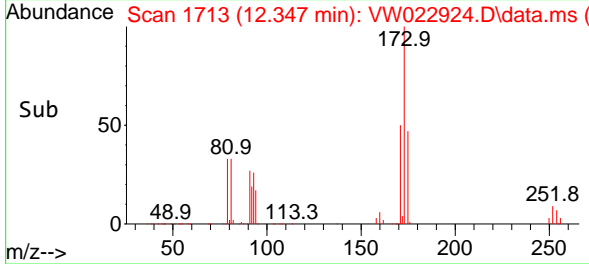


#59
 Bromoform
 Concen: 23.042 ug/L
 RT: 12.347 min Scan# 1713
 Delta R.T. -0.000 min
 Lab File: VW022924.D
 Acq: 09 May 2022 12:52

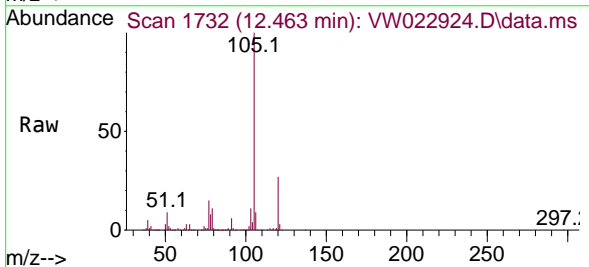
Instrument : MSVOA_W
 ClientSampleId : DBSL3MS



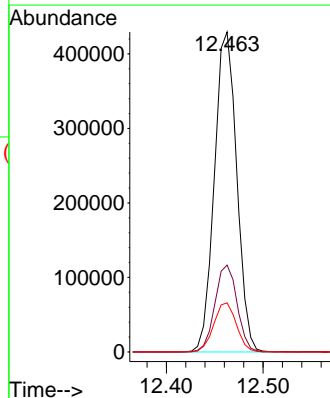
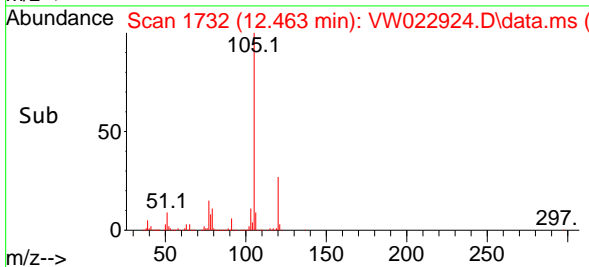
Tgt Ion:173 Resp: 69040
 Ion Ratio Lower Upper
 173 100
 175 46.7 38.1 57.1
 254 8.0 6.5 9.7

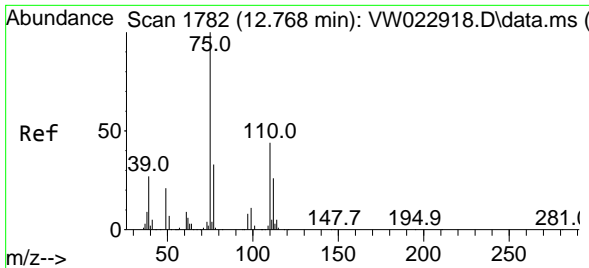


#60
 Isopropylbenzene
 Concen: 23.767 ug/L
 RT: 12.463 min Scan# 1732
 Delta R.T. -0.000 min
 Lab File: VW022924.D
 Acq: 09 May 2022 12:52



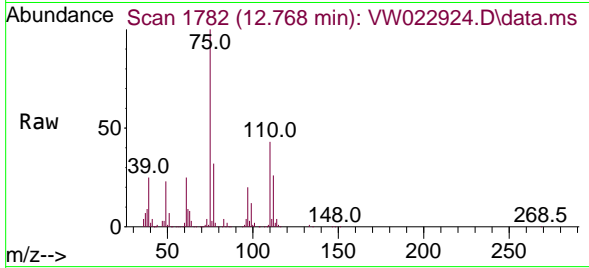
Tgt Ion:105 Resp: 688373
 Ion Ratio Lower Upper
 105 100
 120 27.0 21.3 31.9
 77 15.6 12.6 19.0



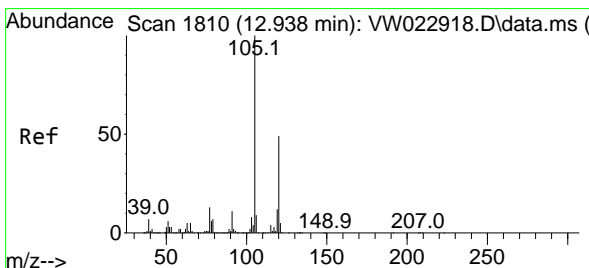
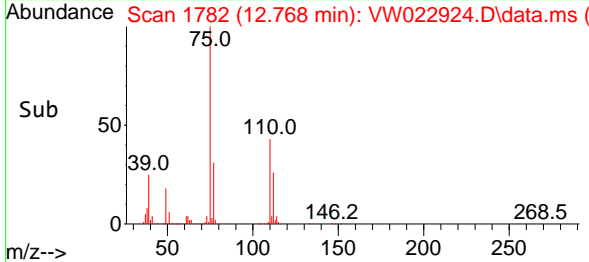
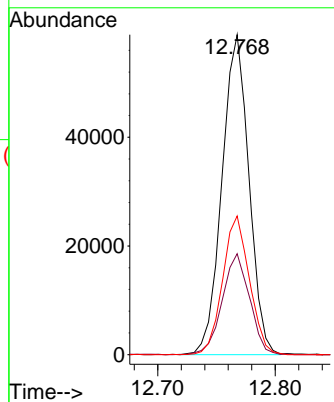


#61
 1,2,3-Trichloropropane
 Concen: 22.220 ug/L
 RT: 12.768 min Scan# 11
 Delta R.T. -0.000 min
 Lab File: VW022924.D
 Acq: 09 May 2022 12:52

Instrument :
 MSVOA_W
 ClientSampleId :
 DBSL3MS

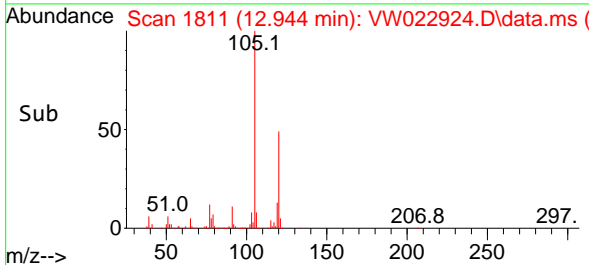
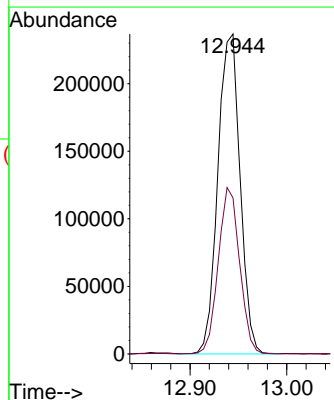
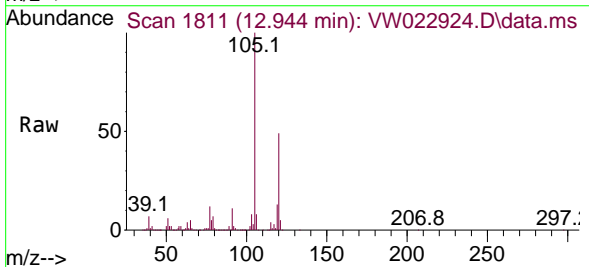


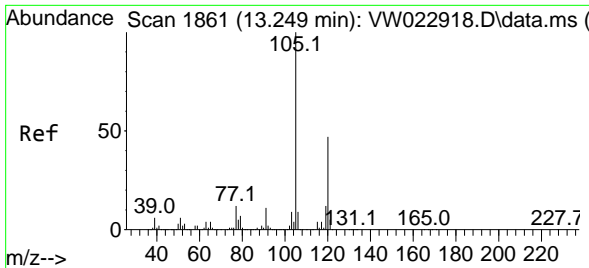
Tgt Ion: 75 Resp: 93864
 Ion Ratio Lower Upper
 75 100
 77 32.0 26.2 39.2
 110 43.1 34.1 51.1



#62
 1,3,5-Trimethylbenzene
 Concen: 23.461 ug/L
 RT: 12.944 min Scan# 1811
 Delta R.T. 0.006 min
 Lab File: VW022924.D
 Acq: 09 May 2022 12:52

Tgt Ion:105 Resp: 378045
 Ion Ratio Lower Upper
 105 100
 120 49.9 38.9 58.3

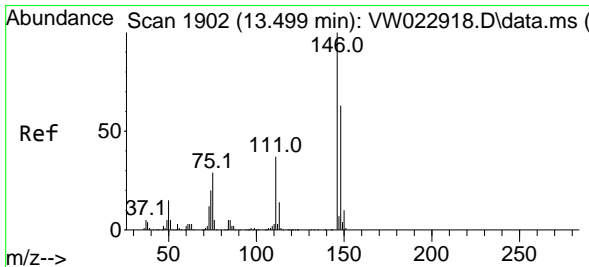
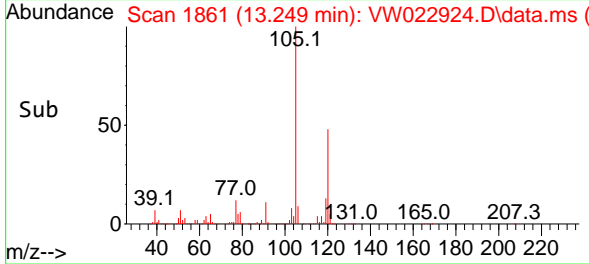
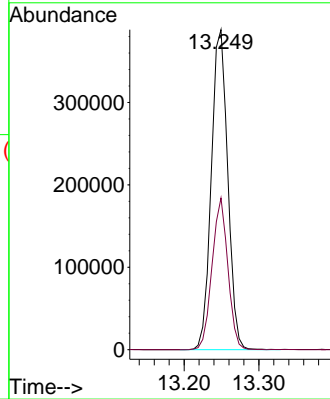
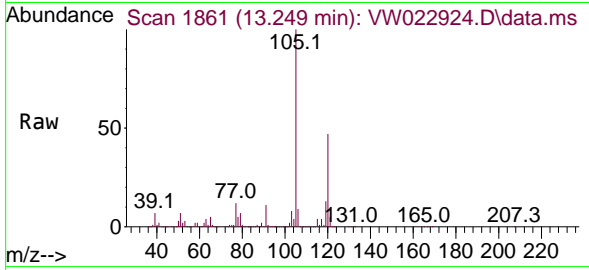




#63
 1,2,4-Trimethylbenzene
 Concen: 24.458 ug/L
 RT: 13.249 min Scan# 1861
 Delta R.T. -0.000 min
 Lab File: VW022924.D
 Acq: 09 May 2022 12:52

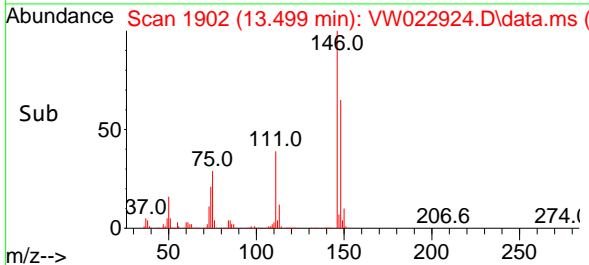
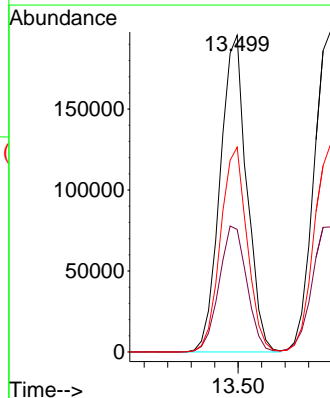
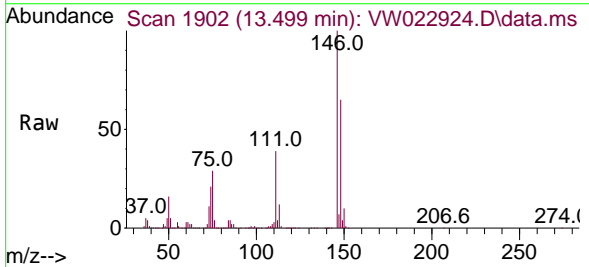
Instrument : MSVOA_W
 ClientSampleId : DBSL3MS

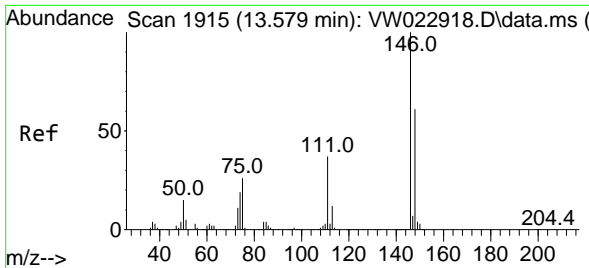
Tgt Ion:105 Resp: 591765
 Ion Ratio Lower Upper
 105 100
 120 45.7 37.4 56.2



#64
 1,3-Dichlorobenzene
 Concen: 23.883 ug/L
 RT: 13.499 min Scan# 1902
 Delta R.T. -0.000 min
 Lab File: VW022924.D
 Acq: 09 May 2022 12:52

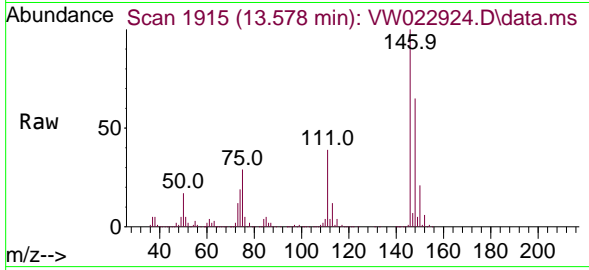
Tgt Ion:146 Resp: 308847
 Ion Ratio Lower Upper
 146 100
 111 38.7 29.5 54.9
 148 64.7 48.6 90.2



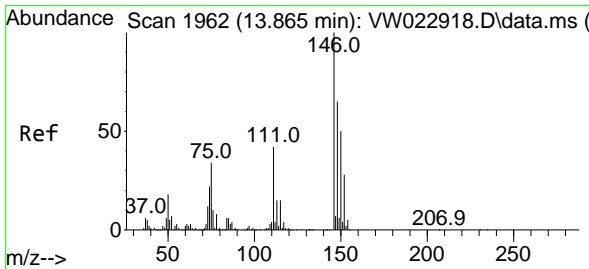
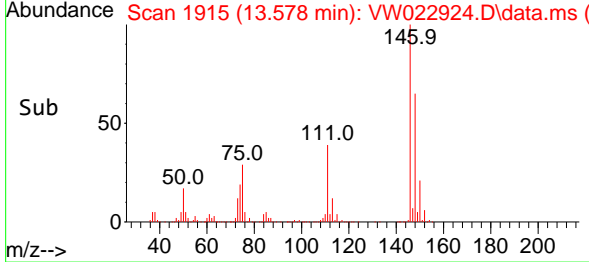
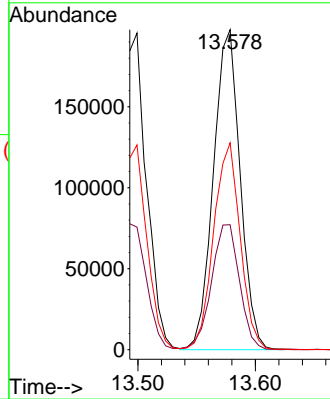


#65
 1,4-Dichlorobenzene
 Concen: 23.441 ug/L
 RT: 13.578 min Scan# 1915
 Delta R.T. -0.000 min
 Lab File: VW022924.D
 Acq: 09 May 2022 12:52

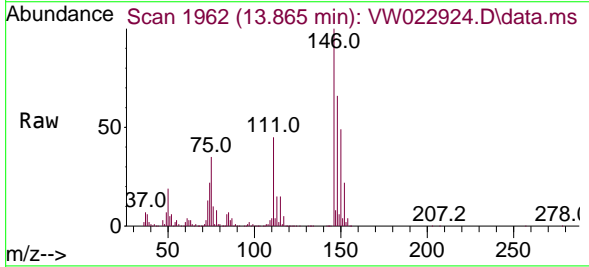
Instrument : MSVOA_W
 ClientSampleId : DBSL3MS



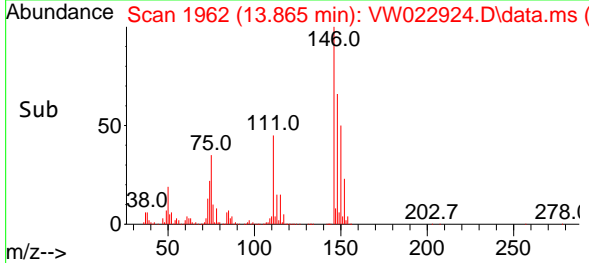
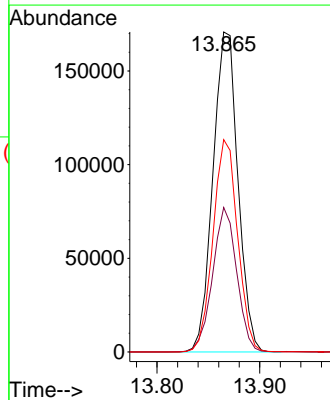
Tgt Ion:146 Resp: 313107
 Ion Ratio Lower Upper
 146 100
 111 39.1 27.2 50.4
 148 64.7 44.0 81.6

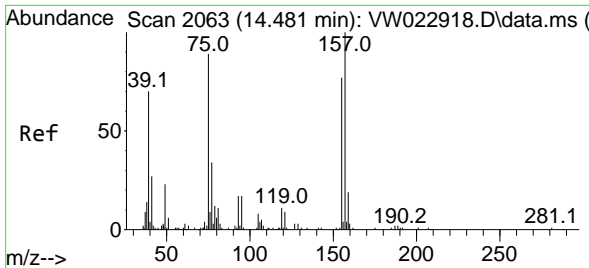


#67
 1,2-Dichlorobenzene
 Concen: 24.380 ug/L
 RT: 13.865 min Scan# 1962
 Delta R.T. -0.000 min
 Lab File: VW022924.D
 Acq: 09 May 2022 12:52



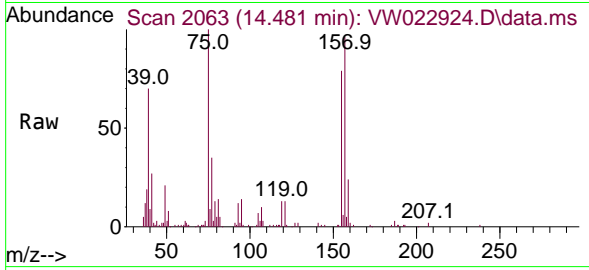
Tgt Ion:146 Resp: 288496
 Ion Ratio Lower Upper
 146 100
 111 45.1 35.7 53.5
 148 66.4 52.6 79.0



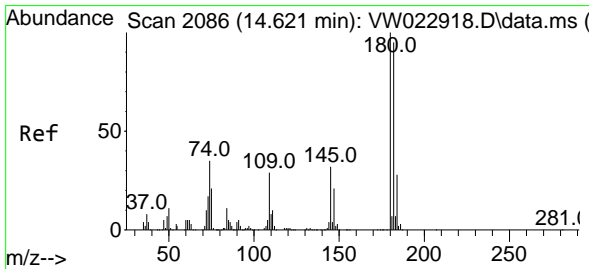
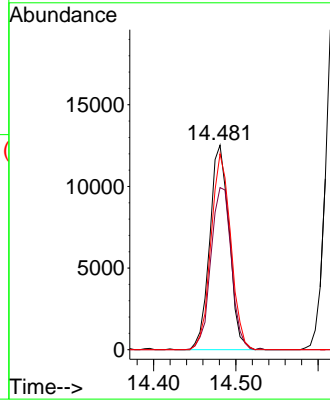
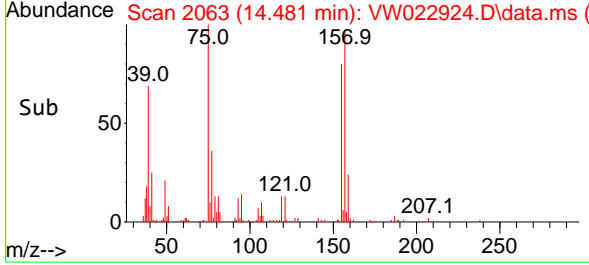


#68
 1,2-Dibromo-3-chloropropane
 Concen: 22.340 ug/L
 RT: 14.481 min Scan# 2063
 Delta R.T. -0.000 min
 Lab File: VW022924.D
 Acq: 09 May 2022 12:52

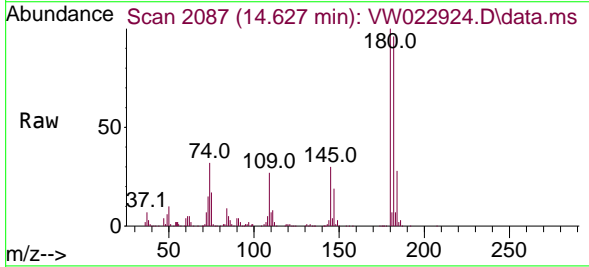
Instrument : MSVOA_W
 ClientSampleId : DBSL3MS



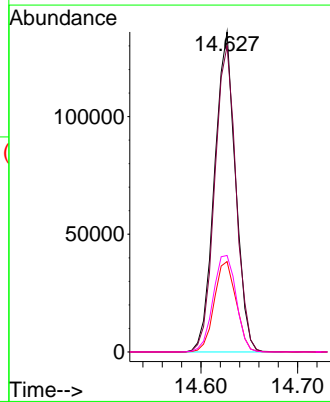
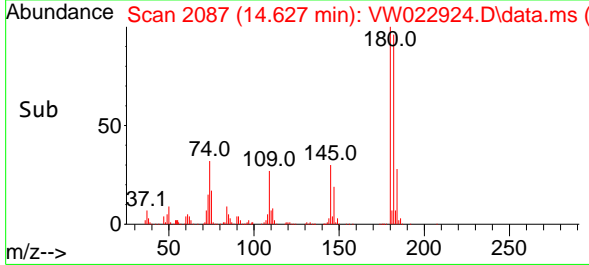
Tgt Ion: 75 Resp: 20625
 Ion Ratio Lower Upper
 75 100
 155 79.3 59.3 88.9
 157 95.8 89.8 134.8

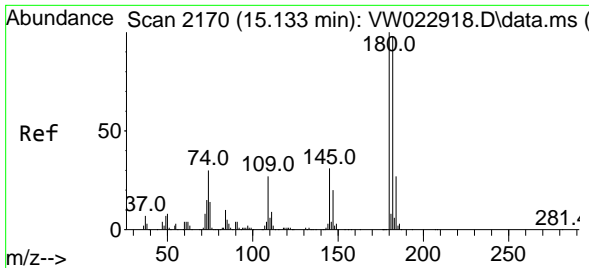


#69
 1,3,5-Trichlorobenzene
 Concen: 23.881 ug/L
 RT: 14.627 min Scan# 2087
 Delta R.T. 0.006 min
 Lab File: VW022924.D
 Acq: 09 May 2022 12:52



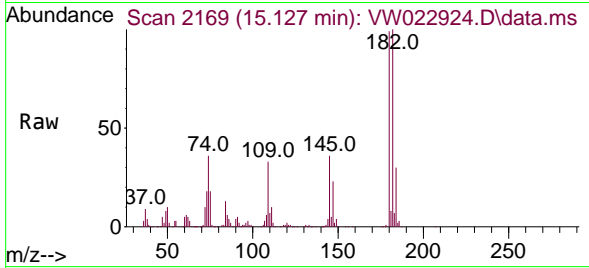
Tgt Ion: 180 Resp: 204992
 Ion Ratio Lower Upper
 180 100
 182 96.8 74.8 112.2
 184 29.4 23.4 35.2
 145 33.2 26.5 39.7



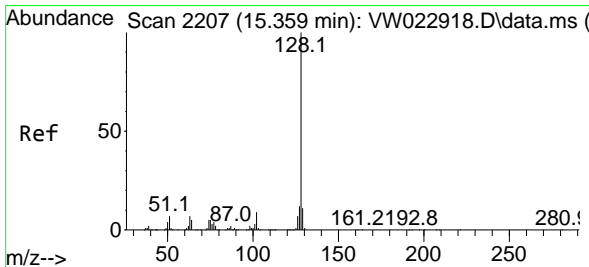
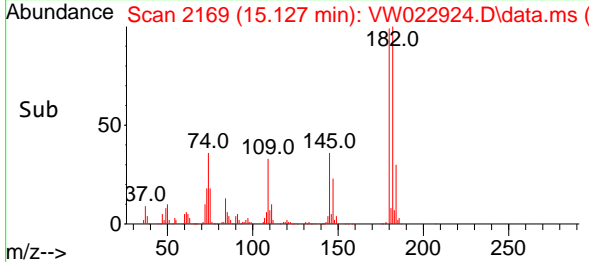
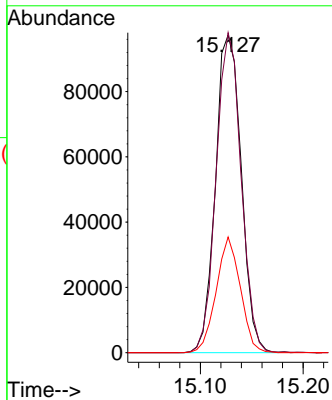


#70
 1,2,4-trichlorobenzene
 Concen: 24.519 ug/L
 RT: 15.127 min Scan# 2170
 Delta R.T. -0.006 min
 Lab File: VW022924.D
 Acq: 09 May 2022 12:52

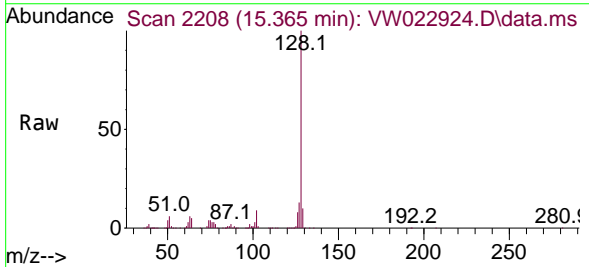
Instrument : MSVOA_W
 ClientSampleId : DBSL3MS



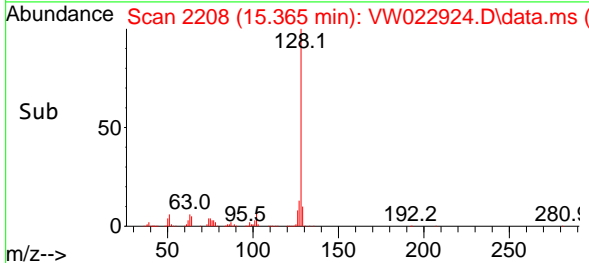
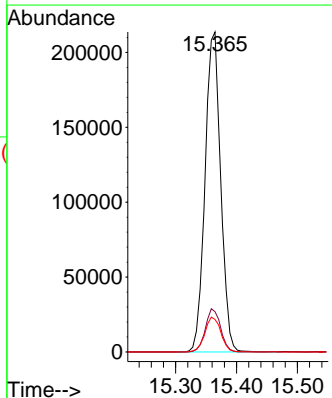
Tgt Ion:180 Resp: 169304
 Ion Ratio Lower Upper
 180 100
 182 97.7 74.9 112.3
 145 34.2 26.6 39.8

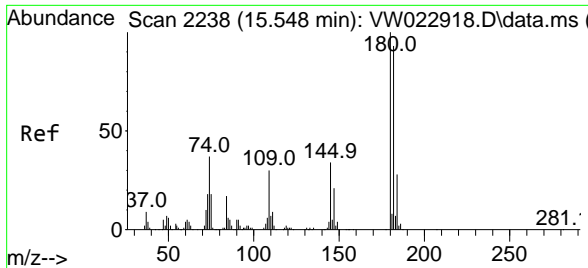


#71
 Naphthalene
 Concen: 25.409 ug/L
 RT: 15.365 min Scan# 2208
 Delta R.T. 0.006 min
 Lab File: VW022924.D
 Acq: 09 May 2022 12:52



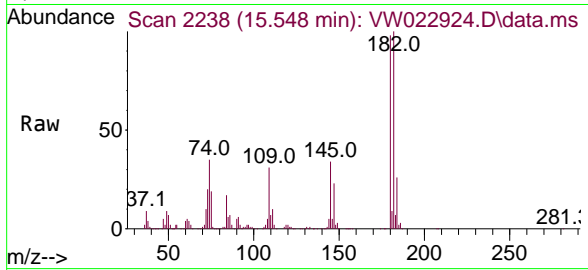
Tgt Ion:128 Resp: 381323
 Ion Ratio Lower Upper
 128 100
 127 13.2 10.6 16.0
 129 11.1 8.7 13.1





#72
 1,2,3-Trichlorobenzene
 Concen: 25.110 ug/L
 RT: 15.548 min Scan# 21
 Delta R.T. -0.000 min
 Lab File: VW022924.D
 Acq: 09 May 2022 12:52

Instrument :
 MSVOA_W
 ClientSampleId :
 DBSL3MS



Tgt Ion:180 Resp: 153668

Ion	Ratio	Lower	Upper
180	100		
182	95.2	73.5	110.3
145	35.4	27.9	41.9

