

Data Path : Z:\voasrv\HPCHEM1\MSVOA_W\Data\VW050922\
 Data File : VW022929.D
 Acq On : 09 May 2022 14:52
 Operator : SY/VA
 Sample : N2713-07
 Misc : 5.74g/10mL/MSVOA_W/SOIL
 ALS Vial : 1 Sample Multiplier: 1

Instrument :
 MSVOA_W
 ClientSampleId :
 DBSK7

Quant Time: May 09 22:58:22 2022
 Quant Method : Z:\voasrv\HPCHEM1\MSVOA_W\Method\SFAMWLM050222SMA.M
 Quant Title : SFAM01.0
 QLast Update : Mon May 09 22:55:00 2022
 Response via : Initial Calibration

Compound	R.T.	QIon	Response	Conc	Units	Dev(Min)

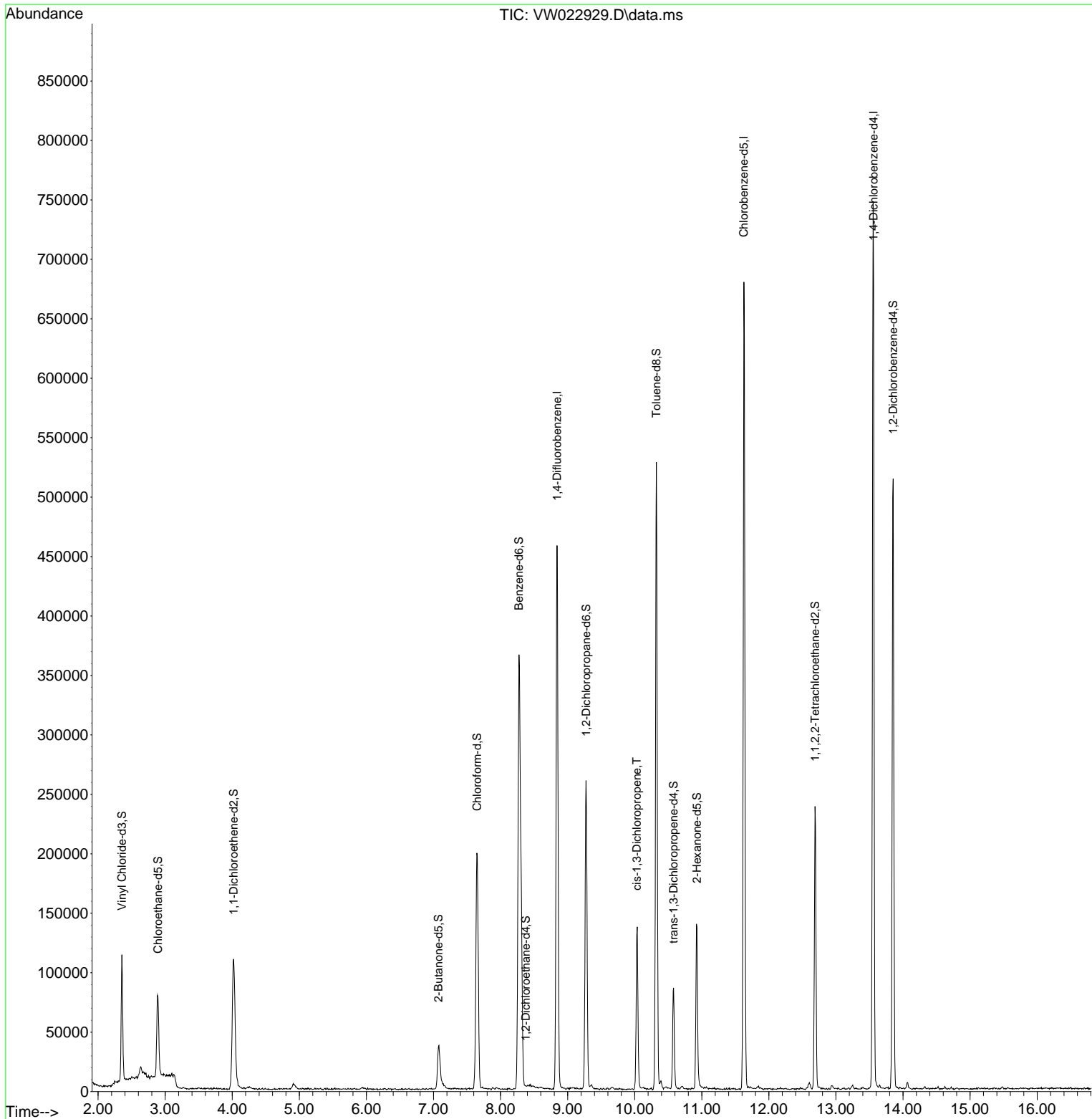
Internal Standards						
1) 1,4-Difluorobenzene	8.842	114	378456	25.000	ug/L	0.00
28) Chlorobenzene-d5	11.628	117	369318	25.000	ug/L	0.00
58) 1,4-Dichlorobenzene-d4	13.560	152	184735	25.000	ug/L	0.00
System Monitoring Compounds						
4) Vinyl Chloride-d3	2.355	65	100779	12.979	ug/L	0.00
Spiked Amount	25.000	Range 30 - 150	Recovery =	51.920%		
7) Chloroethane-d5	2.891	69	82462	16.324	ug/L	0.00
Spiked Amount	25.000	Range 30 - 150	Recovery =	65.280%		
11) 1,1-Dichloroethene-d2	4.019	63	109279	10.892	ug/L	0.00
Spiked Amount	25.000	Range 45 - 110	Recovery =	43.560%#		
21) 2-Butanone-d5	7.074	46	58513	39.635	ug/L	0.00
Spiked Amount	50.000	Range 20 - 135	Recovery =	79.280%		
24) Chloroform-d	7.653	84	200503	18.083	ug/L	0.00
Spiked Amount	25.000	Range 40 - 150	Recovery =	72.320%		
26) 1,2-Dichloroethane-d4	8.378	65	214	0.035	ug/L	0.07
Spiked Amount	25.000	Range 70 - 130	Recovery =	0.160%#		
32) Benzene-d6	8.275	84	368580	17.315	ug/L	0.00
Spiked Amount	25.000	Range 20 - 135	Recovery =	69.240%		
36) 1,2-Dichloropropane-d6	9.274	67	113909	19.049	ug/L	0.00
Spiked Amount	25.000	Range 70 - 120	Recovery =	76.200%		
41) Toluene-d8	10.323	98	344198	16.738	ug/L	0.00
Spiked Amount	25.000	Range 30 - 130	Recovery =	66.960%		
43) trans-1,3-Dichloroprop...	10.579	79	45303	16.454	ug/L	0.00
Spiked Amount	25.000	Range 30 - 135	Recovery =	65.800%		
47) 2-Hexanone-d5	10.927	63	48286	42.300	ug/L	0.00
Spiked Amount	50.000	Range 20 - 135	Recovery =	84.600%		
56) 1,1,2,2-Tetrachloroeth...	12.688	84	112592	20.202	ug/L	0.00
Spiked Amount	25.000	Range 45 - 120	Recovery =	80.800%		
66) 1,2-Dichlorobenzene-d4	13.853	152	126118	19.530	ug/L	0.00
Spiked Amount	25.000	Range 75 - 120	Recovery =	78.120%		
Target Compounds						
39) cis-1,3-Dichloropropene	10.030	75	4381	0.537	ug/L #	64

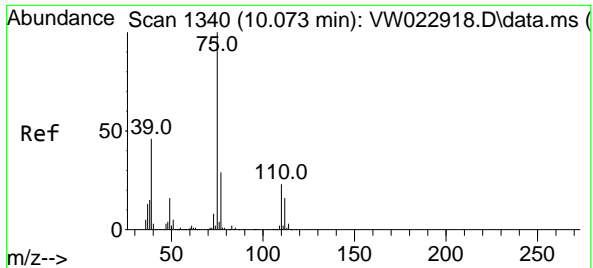
(#) = qualifier out of range (m) = manual integration (+) = signals summed

Data Path : Z:\voasrv\HPCHEM1\MSVOA_W\Data\VW050922\
 Data File : VW022929.D
 Acq On : 09 May 2022 14:52
 Operator : SY/VA
 Sample : N2713-07
 Misc : 5.74g/10mL/MSVOA_W/SOIL
 ALS Vial : 1 Sample Multiplier: 1

Instrument :
 MSVOA_W
 ClientSampleId :
 DBSK7

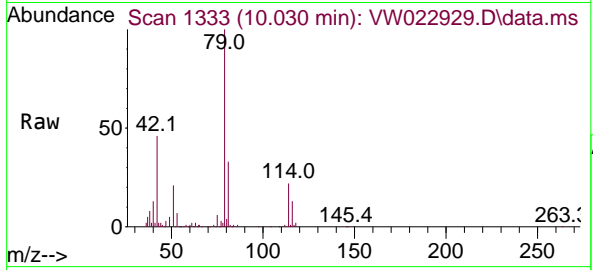
Quant Time: May 09 22:58:22 2022
 Quant Method : Z:\voasrv\HPCHEM1\MSVOA_W\Method\SFAMWLM050222SMA.M
 Quant Title : SFAM01.0
 QLast Update : Mon May 09 22:55:00 2022
 Response via : Initial Calibration





#39
 cis-1,3-Dichloropropene
 Concen: 0.537 ug/L
 RT: 10.030 min Scan# 11
 Delta R.T. -0.043 min
 Lab File: VW022929.D
 Acq: 09 May 2022 14:52

Instrument :
 MSVOA_W
 ClientSampleId :
 DBSK7



Tgt Ion: 75 Resp: 4381
 Ion Ratio Lower Upper
 75 100
 77 51.5 22.1 41.1#

