

Data Path : Z:\voasrv\HPCHEM1\MSVOA_W\Data\VW051524\
 Data File : VW028605.D
 Acq On : 15 May 2024 14:20
 Operator : SY/MD
 Sample : P2484-06
 Mi sc : 5.17g/10mL/MSVOA_W/SOIL/A
 ALS Vial : 1 Sample Multiplier: 1

Instrument :
 MSVOA_W
 ClientSampleId :

Quant Time: May 16 02:16:56 2024
 Quant Method : Z:\voasrv\HPCHEM1\MSVOA_W\Method\SFAMWLM050224SMA.M
 Quant Title : SFAM01.0
 QLast Update : Thu May 16 02:15:20 2024
 Response via : Initial Calibration

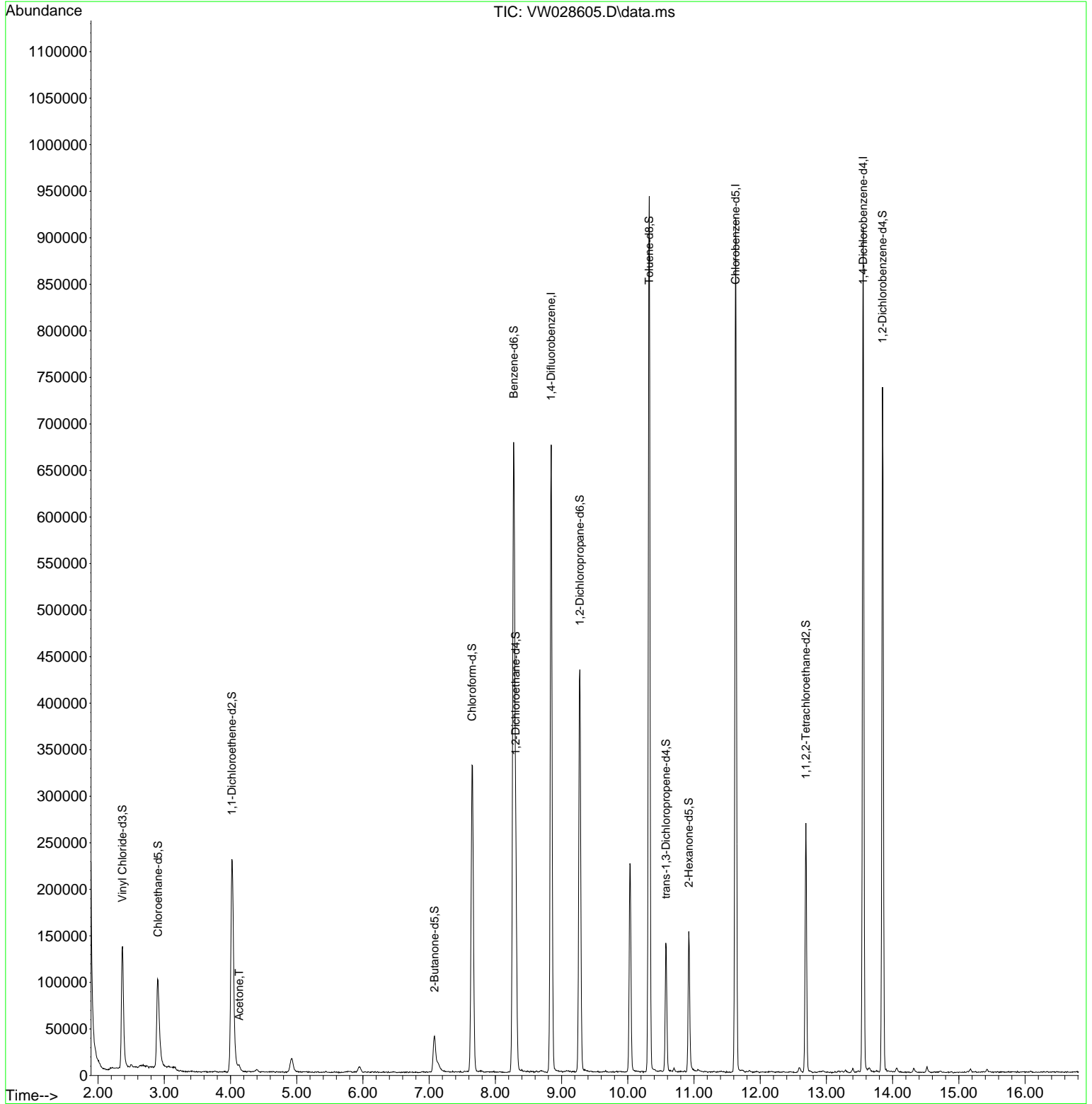
Compound	R. T.	QI on	Response	Conc	Units	Dev(Min)
Internal Standards						
1) 1,4-Difluorobenzene	8.843	114	514981	25.000	ug/L	0.00
28) Chlorobenzene-d5	11.629	117	454792	25.000	ug/L	0.00
58) 1,4-Dichlorobenzene-d4	13.555	152	216064	25.000	ug/L	0.00
System Monitoring Compounds						
4) Vinyl Chloride-d3	2.368	65	185700	18.989	ug/L	0.00
Spiked Amount	25.000	Range	30 - 150	Recovery	=	75.960%
7) Chloroethane-d5	2.905	69	147956	19.759	ug/L	0.00
Spiked Amount	25.000	Range	30 - 150	Recovery	=	79.040%
11) 1,1-Dichloroethene-d2	4.021	65	82141	20.104	ug/L	0.00
Spiked Amount	25.000	Range	45 - 110	Recovery	=	80.400%
21) 2-Butanone-d5	7.081	46	67723	26.544	ug/L	0.00
Spiked Amount	50.000	Range	20 - 135	Recovery	=	53.080%
24) Chloroform-d	7.648	84	329782	20.494	ug/L	0.00
Spiked Amount	25.000	Range	40 - 150	Recovery	=	81.960%
26) 1,2-Dichloroethane-d4	8.306	65	176540	19.163	ug/L	0.00
Spiked Amount	25.000	Range	70 - 130	Recovery	=	76.640%
32) Benzene-d6	8.276	84	663725	21.874	ug/L	0.00
Spiked Amount	25.000	Range	20 - 135	Recovery	=	87.480%
36) 1,2-Dichloropropane-d6	9.276	67	195575	21.420	ug/L	0.00
Spiked Amount	25.000	Range	70 - 120	Recovery	=	85.680%
41) Toluene-d8	10.324	98	596104	22.184	ug/L	0.00
Spiked Amount	25.000	Range	30 - 130	Recovery	=	88.720%
43) trans-1,3-Dichloropropene	10.574	79	72262	19.673	ug/L	0.00
Spiked Amount	25.000	Range	30 - 135	Recovery	=	78.680%
47) 2-Hexanone-d5	10.922	63	48043	30.507	ug/L	0.00
Spiked Amount	50.000	Range	20 - 135	Recovery	=	61.020%
56) 1,1,2,2-Tetrachloroethane	12.690	84	125668	16.413	ug/L	0.00
Spiked Amount	25.000	Range	45 - 120	Recovery	=	65.640%
66) 1,2-Dichlorobenzene-d4	13.848	152	176394	21.420	ug/L	0.00
Spiked Amount	25.000	Range	75 - 120	Recovery	=	85.680%
Target Compounds						
13) Acetone	4.130	43	8753	3.771	ug/L	83

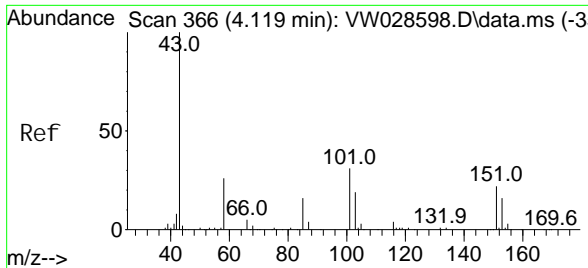
(#) = qualifier out of range (m) = manual integration (+) = signals summed

Data Path : Z:\voasrv\HPCHEM1\MSVOA_W\Data\VW051524\
 Data File : VW028605.D
 Acq On : 15 May 2024 14:20
 Operator : SY/MD
 Sample : P2484-06
 Misc : 5.17g/10mL/MSVOA_W/SOIL/A
 ALS Vial : 1 Sample Multiplier: 1

Instrument :
 MSVOA_W
ClientSampleId :

Quant Time: May 16 02:16:56 2024
 Quant Method : Z:\voasrv\HPCHEM1\MSVOA_W\Method\SFAMWLM050224SMA.M
 Quant Title : SFAM01.0
 QLast Update : Thu May 16 02:15:20 2024
 Response via : Initial Calibration





#13
 Acetone
 Concen: 3.771 ug/L
 RT: 4.130 min Scan# 30
 Delta R.T. 0.012 min
 Lab File: VW028605.D
 Acq: 15 May 2024 14:20

Instrument :
 MSVOA_W
 ClientSampleId :

Tgt Ion: 43 Resp: 8753
 Ion Ratio Lower Upper
 43 100
 58 18.6 0.0 54.4

