

Data Path : Z:\voasrv\HPCHEM1\MSVOA_W\Data\VW051524\
 Data File : VW028609.D
 Acq On : 15 May 2024 15:55
 Operator : SY/MD
 Sample : P2484-04
 Misc : 6.35g/10mL/MSVOA_W/SOIL/A
 ALS Vial : 1 Sample Multiplier: 1

Instrument :
 MSVOA_W
 ClientSampleId :

Quant Time: May 16 02:17:44 2024
 Quant Method : Z:\voasrv\HPCHEM1\MSVOA_W\Method\SFAMWLM050224SMA.M
 Quant Title : SFAM01.0
 QLast Update : Thu May 16 02:15:20 2024
 Response via : Initial Calibration

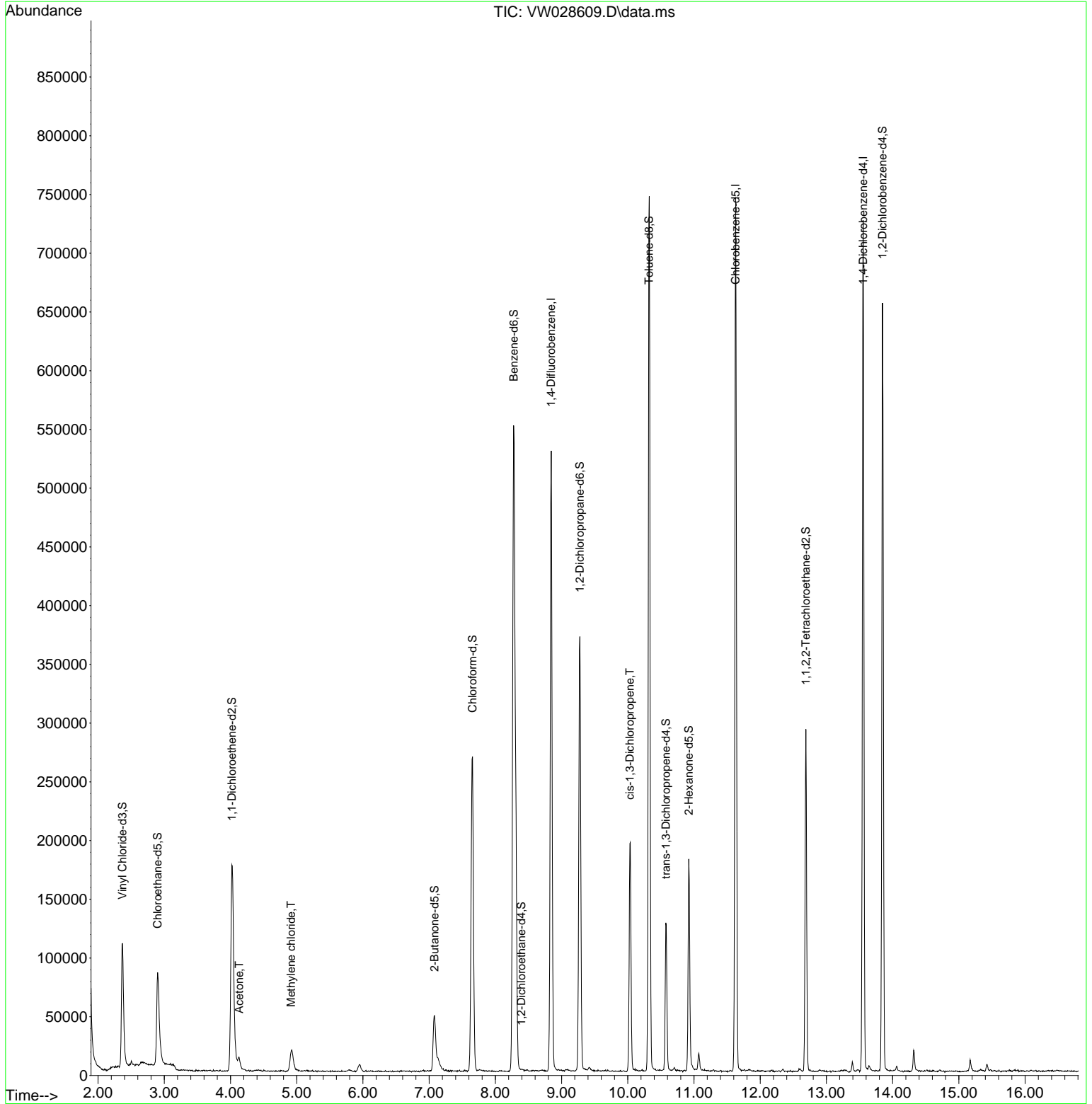
Compound	R.T.	QI on	Response	Conc	Units	Dev(Min)
Internal Standards						
1) 1,4-Difluorobenzene	8.843	114	404440	25.000	ug/L	0.00
28) Chlorobenzene-d5	11.629	117	379982	25.000	ug/L	0.00
58) 1,4-Dichlorobenzene-d4	13.556	152	176051	25.000	ug/L	0.00
System Monitoring Compounds						
4) Vinyl Chloride-d3	2.369	65	150646	19.615	ug/L	0.00
Spike Amount	25.000	Range	30 - 150	Recovery	=	78.480%
7) Chloroethane-d5	2.899	69	120896	20.559	ug/L	0.00
Spike Amount	25.000	Range	30 - 150	Recovery	=	82.240%
11) 1,1-Dichloroethane-d2	4.021	65	64990	20.254	ug/L	0.00
Spike Amount	25.000	Range	45 - 110	Recovery	=	81.000%
21) 2-Butanone-d5	7.081	46	84256	42.051	ug/L	0.00
Spike Amount	50.000	Range	20 - 135	Recovery	=	84.100%
24) Chloroform-d	7.654	84	267206	21.144	ug/L	0.00
Spike Amount	25.000	Range	40 - 150	Recovery	=	84.560%
26) 1,2-Dichloroethane-d4	8.392	65	106	0.015	ug/L	0.09
Spike Amount	25.000	Range	70 - 130	Recovery	=	0.040%#
32) Benzene-d6	8.276	84	535469	21.121	ug/L	0.00
Spike Amount	25.000	Range	20 - 135	Recovery	=	84.480%
36) 1,2-Dichloropropane-d6	9.276	67	164878	21.613	ug/L	0.00
Spike Amount	25.000	Range	70 - 120	Recovery	=	86.440%
41) Toluene-d8	10.318	98	473445	21.088	ug/L	0.00
Spike Amount	25.000	Range	30 - 130	Recovery	=	84.360%
43) trans-1,3-Dichloropropene	10.574	79	66792	21.764	ug/L	0.00
Spike Amount	25.000	Range	30 - 135	Recovery	=	87.040%
47) 2-Hexanone-d5	10.922	63	56751	43.132	ug/L	0.00
Spike Amount	50.000	Range	20 - 135	Recovery	=	86.260%
56) 1,1,2,2-Tetrachloroethane	12.690	84	137747	21.533	ug/L	0.00
Spike Amount	25.000	Range	45 - 120	Recovery	=	86.120%
66) 1,2-Dichlorobenzene-d4	13.848	152	150431	22.419	ug/L	0.00
Spike Amount	25.000	Range	75 - 120	Recovery	=	89.680%
Target Compounds						
13) Acetone	4.130	43	16259	8.920	ug/L	98
16) Methylene chloride	4.917	84	14625	2.338	ug/L	98
39) cis-1,3-Dichloropropene	10.032	75	5749	0.625	ug/L #	81

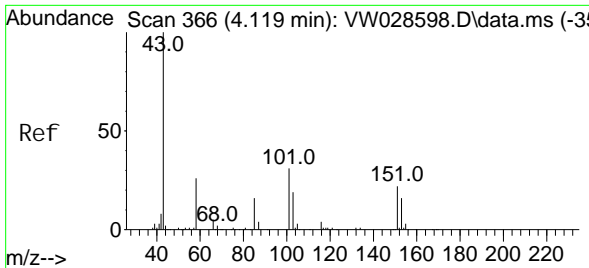
(#) = qualifier out of range (m) = manual integration (+) = signals summed

Data Path : Z:\voasrv\HPCHEM1\MSVOA_W\Data\VW051524\
 Data File : VW028609.D
 Acq On : 15 May 2024 15:55
 Operator : SY/MD
 Sample : P2484-04
 Misc : 6.35g/10mL/MSVOA_W/SOIL/A
 ALS Vial : 1 Sample Multiplier: 1

Instrument :
 MSVOA_W
ClientSampleId :

Quant Time: May 16 02:17:44 2024
 Quant Method : Z:\voasrv\HPCHEM1\MSVOA_W\Method\SFAMWLM050224SMA.M
 Quant Title : SFAM01.0
 QLast Update : Thu May 16 02:15:20 2024
 Response via : Initial Calibration

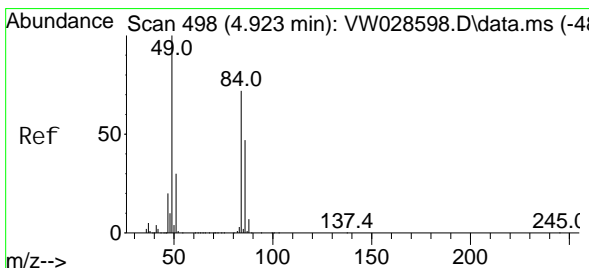
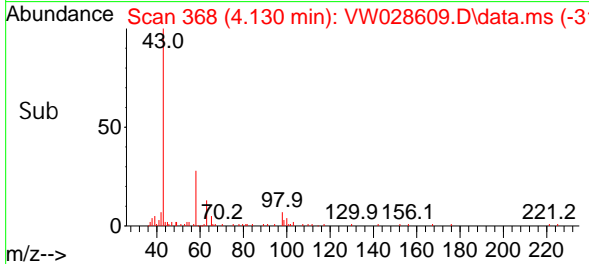
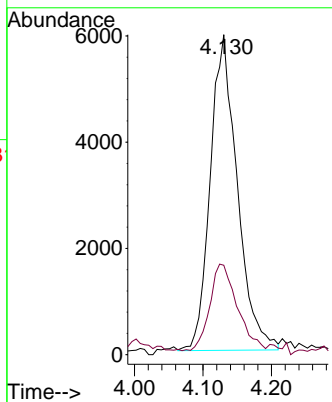
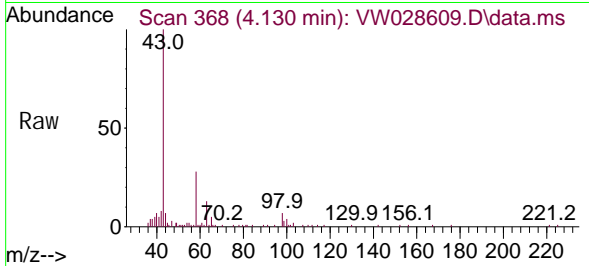




#13
 Acetone
 Concen: 8.920 ug/L
 RT: 4.130 min Scan# 368
 Delta R.T. 0.012 min
 Lab File: VW028609.D
 Acq: 15 May 2024 15:55

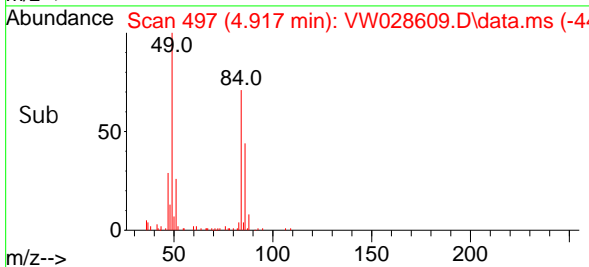
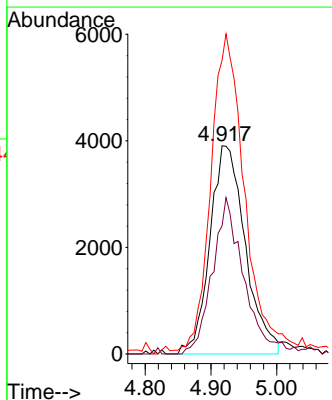
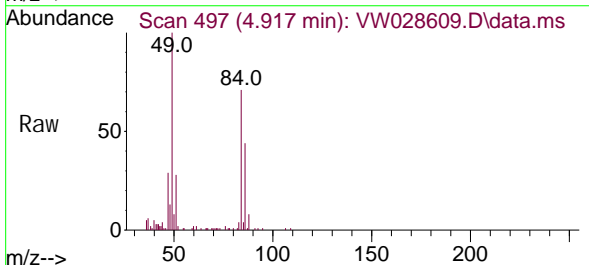
Instrument : MSVOA_W
 ClientSampleId :

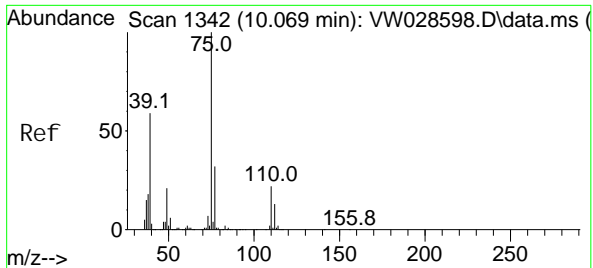
Tgt Ion: 43 Resp: 16259
 Ion Ratio Lower Upper
 43 100
 58 28.2 0.0 54.4



#16
 Methylene chloride
 Concen: 2.338 ug/L
 RT: 4.917 min Scan# 497
 Delta R.T. -0.006 min
 Lab File: VW028609.D
 Acq: 15 May 2024 15:55

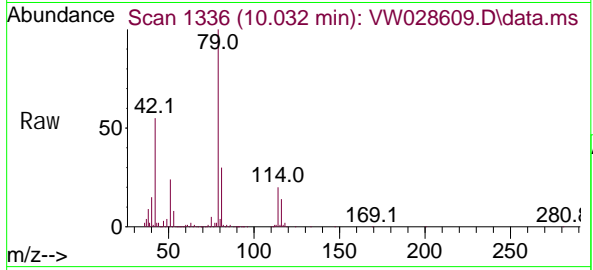
Tgt Ion: 84 Resp: 14625
 Ion Ratio Lower Upper
 84 100
 86 61.5 44.4 82.4
 49 141.0 100.2 186.2





#39
 ci s-1, 3-Di chl oropropene
 Concen: 0.625 ug/L
 RT: 10.032 min Scan# 11
 Delta R.T. -0.037 min
 Lab File: VW028609.D
 Acq: 15 May 2024 15:55

Instrument :
 MSVOA_W
 ClientSampleId :



Tgt Ion: 75 Resp: 5749
 Ion Ratio Lower Upper
 75 100
 77 41.7 21.8 40.6#

