

Data Path : Z:\voasrv\HPCHEM1\MSVOA_W\Data\VW051722\
 Data File : VW023096.D
 Acq On : 17 May 2022 13:24
 Operator : SY/VA
 Sample : VIBLK
 Misc : 5.00g/10mL/MSVOA_W/SOIL
 ALS Vial : 1 Sample Multiplier: 1

Instrument :
 MSVOA_W
 ClientSampleId :
 VIBLK462

Quant Time: May 18 01:28:43 2022
 Quant Method : Z:\voasrv\HPCHEM1\MSVOA_W\Method\SFAMWLM050222SMA.M
 Quant Title : SFAM01.0
 QLast Update : Wed May 18 01:26:16 2022
 Response via : Initial Calibration

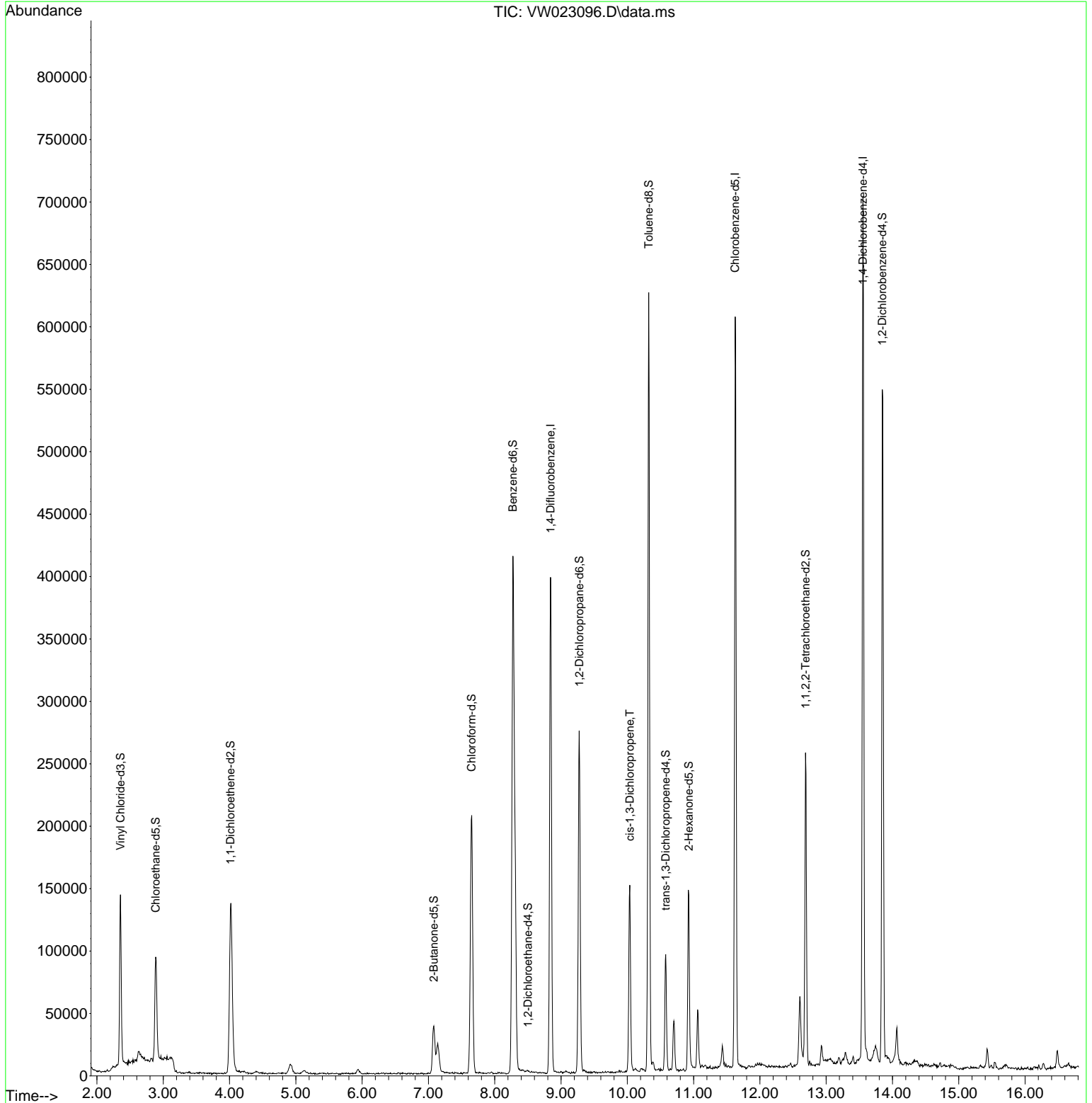
Compound	R.T.	QIon	Response	Conc	Units	Dev(Min)
Internal Standards						
1) 1,4-Difluorobenzene	8.842	114	335121	25.000	ug/L	0.00
28) Chlorobenzene-d5	11.628	117	327428	25.000	ug/L	0.00
58) 1,4-Dichlorobenzene-d4	13.554	152	173017	25.000	ug/L	0.00
System Monitoring Compounds						
4) Vinyl Chloride-d3	2.355	65	136976	19.922	ug/L	0.00
Spiked Amount	25.000	Range 30 - 150	Recovery =	79.680%		
7) Chloroethane-d5	2.885	69	99166	22.170	ug/L	0.00
Spiked Amount	25.000	Range 30 - 150	Recovery =	88.680%		
11) 1,1-Dichloroethene-d2	4.013	63	136234	15.335	ug/L	0.00
Spiked Amount	25.000	Range 45 - 110	Recovery =	61.320%		
21) 2-Butanone-d5	7.080	46	63055	48.235	ug/L	0.00
Spiked Amount	50.000	Range 20 - 135	Recovery =	96.460%		
24) Chloroform-d	7.653	84	209355	21.323	ug/L	0.00
Spiked Amount	25.000	Range 40 - 150	Recovery =	85.280%		
26) 1,2-Dichloroethane-d4	8.500	65	205	0.038	ug/L	0.20
Spiked Amount	25.000	Range 70 - 130	Recovery =	0.160%#		
32) Benzene-d6	8.275	84	415964	22.040	ug/L	0.00
Spiked Amount	25.000	Range 20 - 135	Recovery =	88.160%		
36) 1,2-Dichloropropane-d6	9.275	67	120392	22.709	ug/L	0.00
Spiked Amount	25.000	Range 70 - 120	Recovery =	90.840%		
41) Toluene-d8	10.323	98	403648	22.141	ug/L	0.00
Spiked Amount	25.000	Range 30 - 130	Recovery =	88.560%		
43) trans-1,3-Dichloroprop...	10.579	79	49801	20.402	ug/L	0.00
Spiked Amount	25.000	Range 30 - 135	Recovery =	81.600%		
47) 2-Hexanone-d5	10.927	63	50466	49.866	ug/L	0.00
Spiked Amount	50.000	Range 20 - 135	Recovery =	99.740%		
56) 1,1,2,2-Tetrachloroeth...	12.689	84	116670	23.611	ug/L	0.00
Spiked Amount	25.000	Range 45 - 120	Recovery =	94.440%		
66) 1,2-Dichlorobenzene-d4	13.847	152	136941	22.642	ug/L	0.00
Spiked Amount	25.000	Range 75 - 120	Recovery =	90.560%		
Target Compounds						
39) cis-1,3-Dichloropropene	10.037	75	4713	0.651	ug/L #	60

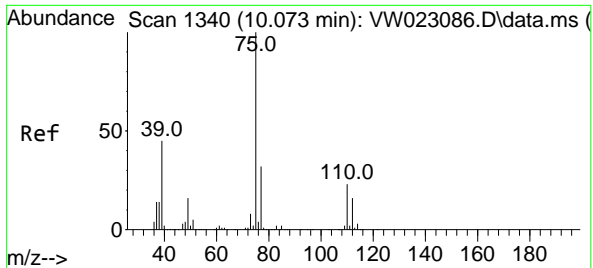
(#) = qualifier out of range (m) = manual integration (+) = signals summed

Data Path : Z:\voasrv\HPCHEM1\MSVOA_W\Data\VW051722\
 Data File : VW023096.D
 Acq On : 17 May 2022 13:24
 Operator : SY/VA
 Sample : VIBLK
 Misc : 5.00g/10mL/MSVOA_W/SOIL
 ALS Vial : 1 Sample Multiplier: 1

Instrument :
 MSVOA_W
 ClientSampleId :
 VIBLK462

Quant Time: May 18 01:28:43 2022
 Quant Method : Z:\voasrv\HPCHEM1\MSVOA_W\Method\SFAMWLM050222SMA.M
 Quant Title : SFAM01.0
 QLast Update : Wed May 18 01:26:16 2022
 Response via : Initial Calibration





#39
 cis-1,3-Dichloropropene
 Concen: 0.651 ug/L
 RT: 10.037 min Scan# 11
 Delta R.T. -0.036 min
 Lab File: VW023096.D
 Acq: 17 May 2022 13:24

Instrument : MSVOA_W
 ClientSampleId : VIBLK462

Tgt Ion	Resp	Ion Ratio	Lower	Upper
75	4713	100		
77		53.7	22.1	41.1#

