

Data Path : Z:\voasrv\HPCHEM1\MSVOA\_W\Data\VW051823\  
 Data File : VW025989.D  
 Acq On : 18 May 2023 12:48  
 Operator : SY/MD  
 Sample : 02841-02  
 Misc : 5.98g/10mL/MSVOA\_W/SOIL  
 ALS Vial : 1 Sample Multiplier: 1

Instrument :  
 MSVOA\_W  
 ClientSampleId :  
 C11F2

Integration Parameters: LSCINT.P

Integrator: RTE  
 Smoothing : OFF  
 Sampling : 1  
 Start Thrs: 0.2  
 Stop Thrs : 0

Filtering: 5  
 Min Area: 0 % of largest Peak  
 Max Peaks: 100  
 Peak Location: TOP

If leading or trailing edge < 100 prefer < Baseline drop else tangent >  
 Peak separation: 5

Method : Z:\voasrv\HPCHEM1\MSVOA\_W\Method\SFAMWLM050123SMA.M  
 Title : SFAM01.0

Signal : TIC: VW025989.D\data.ms

peak #	R.T. min	first scan	max scan	last scan	PK TY	peak height	corr. area	corr. % max.	% of total
1	2.363	72	78	94	rVB	128348	324038	10.30%	1.408%
2	2.893	158	165	177	rBV	113965	314339	9.99%	1.366%
3	3.771	306	309	313	rVB6	1483	2684	0.09%	0.012%
4	3.807	313	315	318	rBV4	1999	1565	0.05%	0.007%
5	3.862	322	324	327	rBV4	1483	1655	0.05%	0.007%
6	3.935	333	336	338	rBV3	1794	2410	0.08%	0.010%
7	4.027	340	351	366	rBV2	264863	911461	28.96%	3.961%
8	4.393	406	411	413	rBV6	3529	6235	0.20%	0.027%
9	4.582	440	442	448	rVB7	1778	2693	0.09%	0.012%
10	4.673	454	457	461	rBV6	1125	1590	0.05%	0.007%
11	4.917	486	497	512	rVV3	43425	168440	5.35%	0.732%
12	5.124	526	531	532	rBV5	2049	2364	0.08%	0.010%
13	5.161	535	537	542	rBV5	1563	1549	0.05%	0.007%
14	5.362	567	570	571	rBV3	1641	1542	0.05%	0.007%
15	5.478	587	589	592	rVB4	1917	2060	0.07%	0.009%
16	5.563	599	603	608	rVB7	1051	2411	0.08%	0.010%
17	5.716	625	628	631	rBV5	1647	1697	0.05%	0.007%
18	5.783	635	639	640	rBV4	1216	1858	0.06%	0.008%
19	5.941	654	665	673	rVV3	20704	62362	1.98%	0.271%
20	6.179	702	704	705	rBV2	2100	1864	0.06%	0.008%
21	6.344	729	731	735	rVB5	1668	2339	0.07%	0.010%
22	6.386	735	738	741	rBV5	1747	2629	0.08%	0.011%
23	6.520	755	760	764	rVB8	1811	3777	0.12%	0.016%
24	6.697	785	789	791	rVB5	1895	1796	0.06%	0.008%
25	6.770	798	801	804	rBV5	1740	1571	0.05%	0.007%
26	6.862	811	816	819	rBV7	1390	2378	0.08%	0.010%
27	6.917	821	825	826	rBV4	2009	2046	0.07%	0.009%
28	7.075	842	851	858	rBV	120705	351324	11.16%	1.527%
29	7.356	894	897	901	rBV6	1475	2102	0.07%	0.009%
30	7.453	910	913	915	rVB4	1921	1901	0.06%	0.008%
31	7.477	915	917	919	rBV3	1850	2122	0.07%	0.009%
32	7.526	921	925	928	rBV6	1466	2307	0.07%	0.010%
33	7.648	932	945	958	rBV	523452	1295710	41.17%	5.631%
34	7.752	961	962	964	rBV2	1765	1744	0.06%	0.008%
35	7.880	978	983	986	rBV7	2090	3747	0.12%	0.016%
36	8.112	1018	1021	1026	rVB7	1680	2754	0.09%	0.012%

Data Path : Z:\voasrv\HPCHEM1\MSVOA\_W\Data\VW051823\  
 Data File : VW025989.D  
 Acq On : 18 May 2023 12:48  
 Operator : SY/MD  
 Sample : 02841-02  
 Misc : 5.98g/10mL/MSVOA\_W/SOIL  
 ALS Vial : 1 Sample Multiplier: 1

Instrument :  
 MSVOA\_W  
 ClientSampleId :  
 C11F2

Integration Parameters: LSCINT.P

Integrator: RTE  
 Smoothing : OFF  
 Sampling : 1  
 Start Thrs: 0.2  
 Stop Thrs : 0

Filtering: 5  
 Min Area: 0 % of largest Peak  
 Max Peaks: 100  
 Peak Location: TOP

If leading or trailing edge < 100 prefer < Baseline drop else tangent >  
 Peak separation: 5

Method : Z:\voasrv\HPCHEM1\MSVOA\_W\Method\SFAMWLM050123SMA.M  
 Title : SFAM01.0

37	8.160	1026	1029	1032	rBV5	1672	3100	0.10%	0.013%
38	8.276	1035	1048	1065	rBV2	1038397	3147475	100.00%	13.679%
39	8.630	1102	1106	1110	rVV7	1657	2745	0.09%	0.012%
40	8.685	1112	1115	1119	rBV6	2524	4055	0.13%	0.018%
41	8.843	1130	1141	1153	rBV	1046643	2101255	66.76%	9.132%
42	8.959	1159	1160	1165	rVB4	2504	2567	0.08%	0.011%
43	9.008	1165	1168	1171	rBV5	1451	1715	0.05%	0.007%
44	9.069	1175	1178	1179	rBV3	2020	2090	0.07%	0.009%
45	9.270	1204	1211	1221	rVV	746403	1538091	48.87%	6.685%
46	9.392	1229	1231	1235	rVB5	1677	2115	0.07%	0.009%
47	9.495	1243	1248	1251	rVB6	1508	2291	0.07%	0.010%
48	9.587	1260	1263	1266	rBV5	1131	1564	0.05%	0.007%
49	9.666	1271	1276	1280	rVV8	4128	7517	0.24%	0.033%
50	9.867	1307	1309	1314	rVB6	1671	1643	0.05%	0.007%
51	9.971	1323	1326	1328	rBV3	1310	1531	0.05%	0.007%
52	10.032	1328	1336	1348	rBV	404022	719344	22.85%	3.126%
53	10.136	1352	1353	1359	rVB6	3557	3757	0.12%	0.016%
54	10.197	1359	1363	1366	rBV6	1398	1923	0.06%	0.008%
55	10.318	1375	1383	1393	rBV	1423667	2510551	79.76%	10.911%
56	10.574	1418	1425	1435	rVV	261033	453603	14.41%	1.971%
57	10.703	1439	1446	1452	rVV	32690	60833	1.93%	0.264%
58	10.849	1465	1470	1471	rBV5	2543	3153	0.10%	0.014%
59	10.922	1475	1482	1496	rVV	457485	789903	25.10%	3.433%
60	11.062	1500	1505	1512	rVV2	22054	42869	1.36%	0.186%
61	11.184	1523	1525	1528	rVV4	1937	2009	0.06%	0.009%
62	11.209	1528	1529	1535	rVB6	1668	2112	0.07%	0.009%
63	11.337	1547	1550	1553	rBV5	1334	1983	0.06%	0.009%
64	11.434	1561	1566	1571	rVB9	4309	7440	0.24%	0.032%
65	11.629	1589	1598	1607	rBV	1479166	2486757	79.01%	10.808%
66	12.013	1659	1661	1665	rBV5	1291	1930	0.06%	0.008%
67	12.227	1694	1696	1700	rVV5	1338	2115	0.07%	0.009%
68	12.288	1704	1706	1709	rVB4	2307	1798	0.06%	0.008%
69	12.452	1732	1733	1736	rBV3	1969	2017	0.06%	0.009%
70	12.483	1736	1738	1742	rBV5	1155	1532	0.05%	0.007%
71	12.605	1751	1758	1765	rVV	24667	46587	1.48%	0.202%
72	12.690	1765	1772	1779	rVV	640031	1032370	32.80%	4.487%
73	12.751	1780	1782	1789	rVB6	7109	11342	0.36%	0.049%
74	12.885	1802	1804	1807	rVV4	2323	3199	0.10%	0.014%
75	12.928	1807	1811	1817	rVV6	6540	12440	0.40%	0.054%
76	13.239	1853	1862	1865	rBV6	4014	9975	0.32%	0.043%

Data Path : Z:\voasrv\HPCHEM1\MSVOA\_W\Data\VW051823\  
 Data File : VW025989.D  
 Acq On : 18 May 2023 12:48  
 Operator : SY/MD  
 Sample : 02841-02  
 Misc : 5.98g/10mL/MSVOA\_W/SOIL  
 ALS Vial : 1 Sample Multiplier: 1

Instrument :  
 MSVOA\_W  
 ClientSampleId :  
 C11F2

Integration Parameters: LSCINT.P

Integrator: RTE  
 Smoothing : OFF Filtering: 5  
 Sampling : 1 Min Area: 0 % of largest Peak  
 Start Thrs: 0.2 Max Peaks: 100  
 Stop Thrs : 0 Peak Location: TOP

If leading or trailing edge < 100 prefer < Baseline drop else tangent >  
 Peak separation: 5

Method : Z:\voasrv\HPCHEM1\MSVOA\_W\Method\SFAMWLM050123SMA.M  
 Title : SFAM01.0

77	13.287	1868	1870	1874	rVB5	3706	4531	0.14%	0.020%
78	13.397	1884	1888	1890	rBV5	2216	2606	0.08%	0.011%
79	13.464	1893	1899	1903	rBV9	5434	12164	0.39%	0.053%
80	13.556	1907	1914	1924	rVV	1432810	2246937	71.39%	9.765%
81	13.641	1924	1928	1934	rVB	20767	34477	1.10%	0.150%
82	13.757	1944	1947	1949	rBV4	1923	1837	0.06%	0.008%
83	13.781	1949	1951	1954	rVV4	1601	1765	0.06%	0.008%
84	13.848	1954	1962	1974	rVV	1280083	2071019	65.80%	9.001%
85	13.946	1976	1978	1981	rVB3	2022	1879	0.06%	0.008%
86	14.062	1993	1997	2003	rVB2	15878	26571	0.84%	0.115%
87	14.232	2023	2025	2028	rBV4	1928	1931	0.06%	0.008%
88	14.324	2035	2040	2047	rVB4	11724	22290	0.71%	0.097%
89	14.866	2127	2129	2134	rVB6	2217	2343	0.07%	0.010%
90	15.001	2149	2151	2153	rBV3	1629	1797	0.06%	0.008%
91	15.031	2154	2156	2161	rVB6	2306	2526	0.08%	0.011%
92	15.171	2174	2179	2181	rBV6	4718	7405	0.24%	0.032%
93	15.427	2216	2221	2226	rVV2	14012	21994	0.70%	0.096%
94	15.482	2226	2230	2233	rVB4	4324	6219	0.20%	0.027%
95	15.756	2272	2275	2276	rBV3	2291	1853	0.06%	0.008%
96	15.933	2302	2304	2305	rBV2	1616	1729	0.05%	0.008%
97	15.952	2305	2307	2312	rVV6	3232	3444	0.11%	0.015%
98	16.013	2315	2317	2320	rBV4	1220	1761	0.06%	0.008%
99	16.397	2378	2380	2383	rBV4	1972	1954	0.06%	0.008%
100	16.476	2391	2393	2396	rBV3	1600	1542	0.05%	0.007%

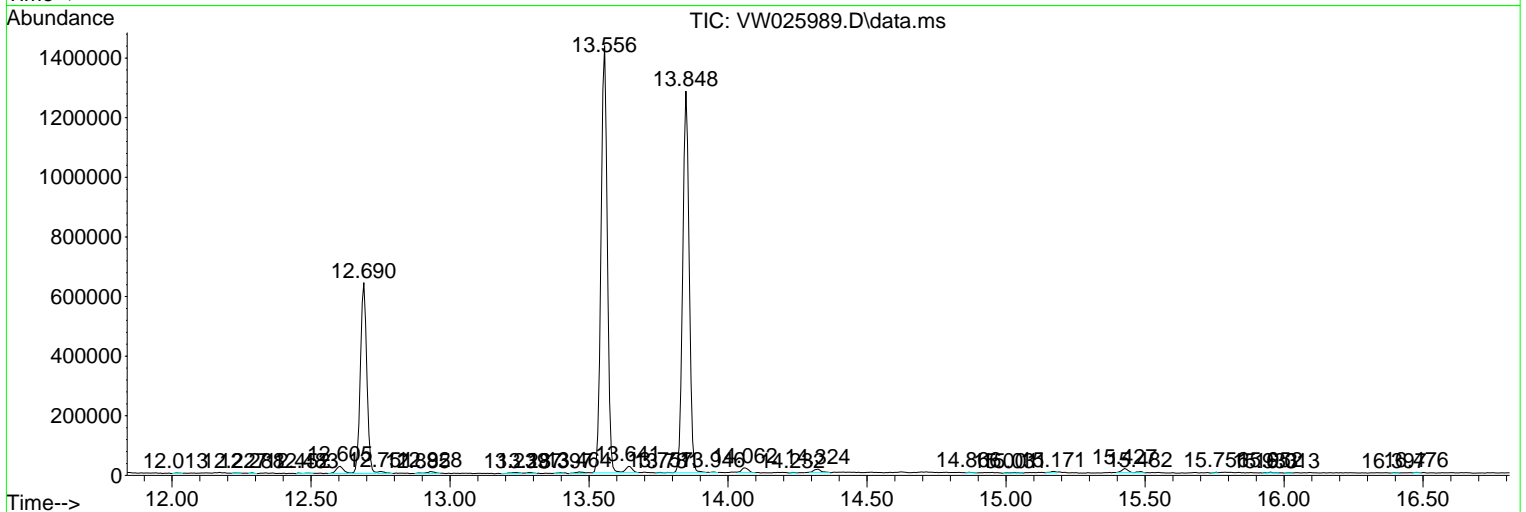
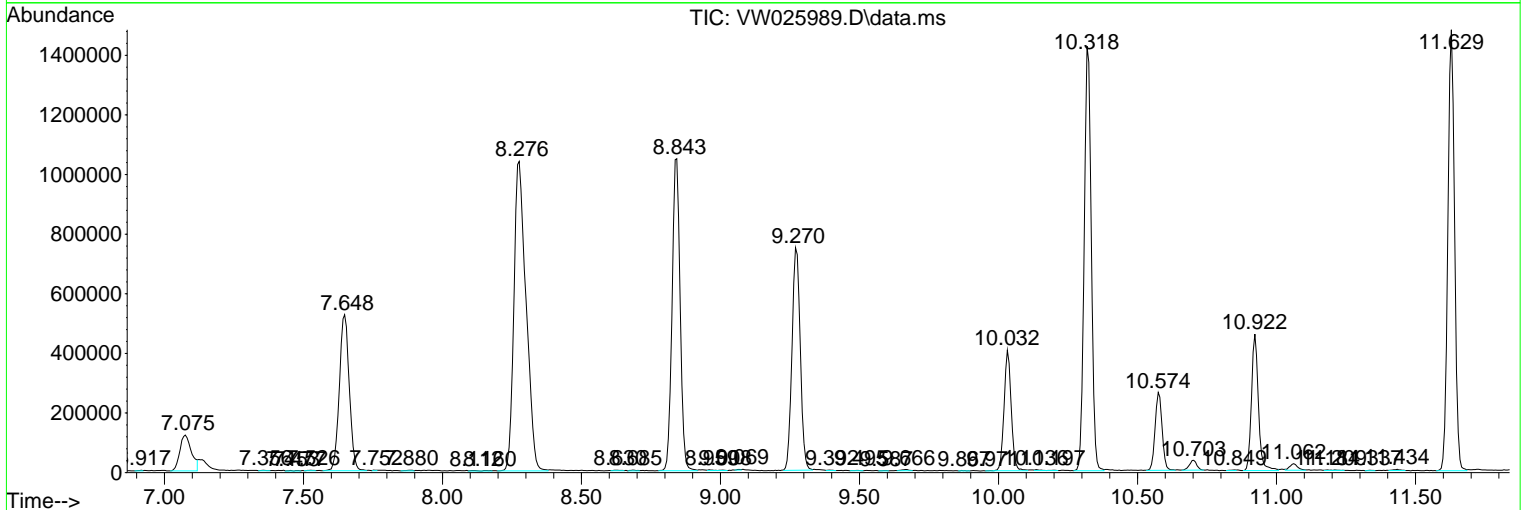
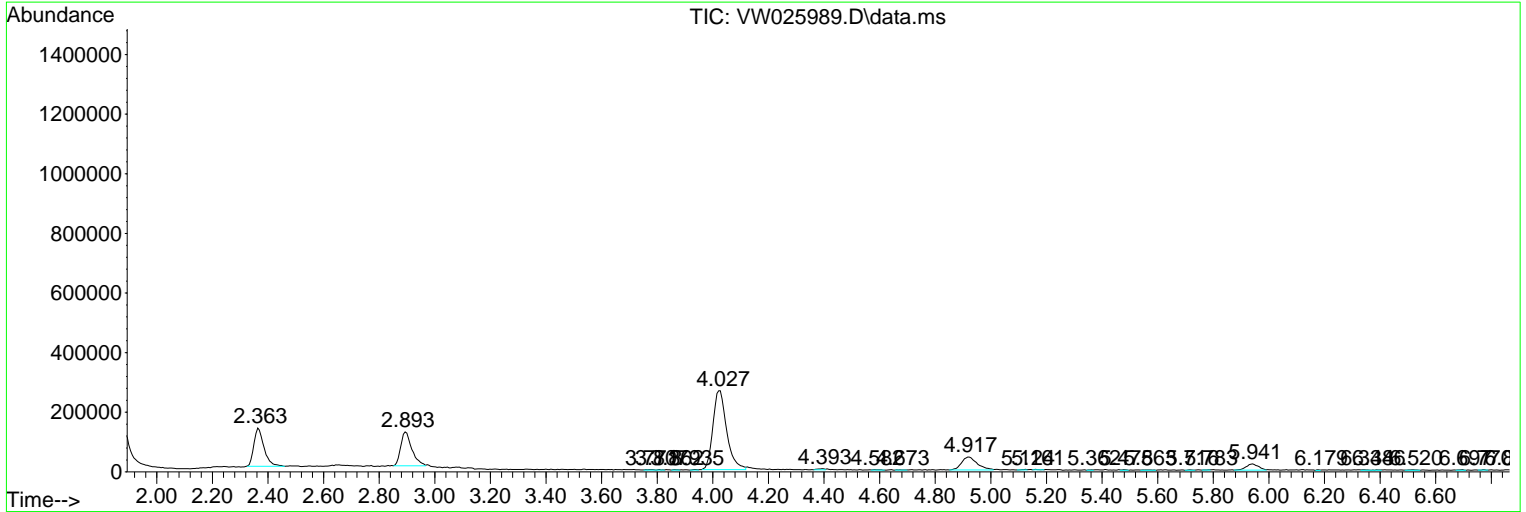
Sum of corrected areas: 23008934

Data Path : Z:\voasrv\HPCHEM1\MSVOA\_W\Data\VW051823\  
 Data File : VW025989.D  
 Acq On : 18 May 2023 12:48  
 Operator : SY/MD  
 Sample : 02841-02  
 Misc : 5.98g/10mL/MSVOA\_W/SOIL  
 ALS Vial : 1 Sample Multiplier: 1

Instrument :  
 MSVOA\_W  
 ClientSampleId :  
 C11F2

Quant Method : Z:\voasrv\HPCHEM1\MSVOA\_W\Method\SFAMWLM050123SMA.M  
 Quant Title : SFAM01.0

TIC Library : C:\Database\NIST20.L  
 TIC Integration Parameters: LSCINT.P



Library Search Compound Report

Data Path : Z:\voasrv\HPCHEM1\MSVOA\_W\Data\VW051823\  
Data File : VW025989.D  
Acq On : 18 May 2023 12:48  
Operator : SY/MD  
Sample : 02841-02  
Misc : 5.98g/10mL/MSVOA\_W/SOIL  
ALS Vial : 1 Sample Multiplier: 1

Instrument :  
MSVOA\_W  
ClientSampleId :  
C11F2

Quant Method : Z:\voasrv\HPCHEM1\MSVOA\_W\Method\SFAMWLM050123SMA.M  
Quant Title : SFAM01.0

TIC Library : C:\Database\NIST20.L  
TIC Integration Parameters: LSCINT.P

No Library Search Compounds Detected

\*\*\*\*\*

Data Path : Z:\voasrv\HPCHEM1\MSVOA\_W\Data\VW051823\  
Data File : VW025989.D  
Acq On : 18 May 2023 12:48  
Operator : SY/MD  
Sample : 02841-02  
Misc : 5.98g/10mL/MSVOA\_W/SOIL  
ALS Vial : 1 Sample Multiplier: 1

Instrument :  
MSVOA\_W  
ClientSampleId :  
C11F2

Quant Method : Z:\voasrv\HPCHEM1\MSVOA\_W\Method\SFAMWLM050123SMA.M  
Quant Title : SFAM01.0

TIC Library : C:\Database\NIST20.L  
TIC Integration Parameters: LSCINT.P

TIC Top Hit name	RT	EstConc	Units	Response	--Internal Standard--		
					#	RT	Resp Conc

---