

Data Path : Z:\voasrv\HPCHEM1\MSVOA_W\Data\VW052022\
 Data File : VW023206.D
 Acq On : 20 May 2022 18:10
 Operator : SY/VA
 Sample : N2925-12
 Misc : 4.76g/10mL/MSVOA_W/SOIL
 ALS Vial : 1 Sample Multiplier: 1

Instrument :
 MSVOA_W
 ClientSampleId :
 EXXY9

Integration Parameters: LSCINT.P
 Integrator: RTE
 Smoothing : OFF
 Sampling : 1
 Start Thrs : 0.2
 Stop Thrs : 0
 Filtering: 5
 Min Area: 0 % of largest Peak
 Max Peaks: 100
 Peak Location: TOP

If leading or trailing edge < 100 prefer < Baseline drop else tangent >
 Peak separation: 5

Method : Z:\voasrv\HPCHEM1\MSVOA_W\Method\SFAMWLM050222SMA.M
 Title : SFAM01.0

Signal : TIC: VW023206.D\data.ms

peak #	R.T. min	first scan	max scan	last scan	PK TY	peak height	corr. area	corr. % max.	% of total
1	2.099	30	32	33	rBV2	1474	960	0.07%	0.010%
2	2.160	36	42	57	rBV	70548	184176	13.17%	1.876%
3	2.349	68	73	81	rBV	146479	244469	17.48%	2.491%
4	2.879	156	160	171	rVB	82459	179721	12.85%	1.831%
5	3.324	232	233	236	rBV3	851	774	0.06%	0.008%
6	3.538	266	268	270	rBV3	1093	1217	0.09%	0.012%
7	3.611	279	280	284	rVB4	1128	755	0.05%	0.008%
8	3.782	307	308	313	rVB4	1303	1098	0.08%	0.011%
9	3.824	313	315	316	rBV2	931	695	0.05%	0.007%
10	4.019	333	347	362	rBV2	137720	437004	31.24%	4.452%
11	4.592	440	441	442	rBV	1192	708	0.05%	0.007%
12	4.714	460	461	464	rBV3	1117	1028	0.07%	0.010%
13	4.830	477	480	481	rBV3	899	734	0.05%	0.007%
14	4.922	485	495	506	rVB4	10237	36675	2.62%	0.374%
15	5.056	514	517	521	rBV4	834	964	0.07%	0.010%
16	5.324	558	561	564	rBV4	793	759	0.05%	0.008%
17	5.428	576	578	581	rBV4	1190	1090	0.08%	0.011%
18	5.458	581	583	588	rBV5	1012	1431	0.10%	0.015%
19	5.611	605	608	609	rBV3	741	911	0.07%	0.009%
20	5.665	615	617	619	rBV3	770	773	0.06%	0.008%
21	5.891	651	654	656	rBV4	785	1178	0.08%	0.012%
22	6.336	722	727	728	rBV4	1023	1678	0.12%	0.017%
23	6.379	732	734	735	rVV	1152	865	0.06%	0.009%
24	6.391	735	736	737	rVV	1678	1006	0.07%	0.010%
25	6.476	747	750	752	rVB4	1134	1346	0.10%	0.014%
26	6.507	752	755	758	rBV6	731	1098	0.08%	0.011%
27	6.568	764	765	768	rBV2	723	729	0.05%	0.007%
28	6.665	779	781	782	rVV2	1228	772	0.06%	0.008%
29	6.696	782	786	787	rVB3	884	1183	0.08%	0.012%
30	6.714	787	789	790	rBV	1076	924	0.07%	0.009%
31	6.873	812	815	816	rBV2	758	816	0.06%	0.008%
32	6.903	819	820	823	rVB3	930	700	0.05%	0.007%
33	7.080	838	849	867	rBV	43130	148022	10.58%	1.508%
34	7.293	882	884	888	rBV4	1359	1962	0.14%	0.020%
35	7.519	919	921	922	rBV2	2230	1636	0.12%	0.017%
36	7.647	933	942	954	rVB	242882	607579	43.44%	6.190%

Data Path : Z:\voasrv\HPCHEM1\MSVOA_W\Data\VW052022\
 Data File : VW023206.D
 Acq On : 20 May 2022 18:10
 Operator : SY/VA
 Sample : N2925-12
 Misc : 4.76g/10mL/MSVOA_W/SOIL
 ALS Vial : 1 Sample Multiplier: 1

Instrument :
 MSVOA_W
 ClientSampleId :
 EXXY9

Integration Parameters: LSCINT.P

Integrator: RTE
 Smoothing : OFF
 Sampling : 1
 Start Thrs: 0.2
 Stop Thrs : 0

Filtering: 5
 Min Area: 0 % of largest Peak
 Max Peaks: 100
 Peak Location: TOP

If leading or trailing edge < 100 prefer < Baseline drop else tangent >
 Peak separation: 5

Method : Z:\voasrv\HPCHEM1\MSVOA_W\Method\SFAMWLM050222SMA.M
 Title : SFAM01.0

37	7.854	975	976	979	rBV3	834	862	0.06%	0.009%
38	8.098	1014	1016	1018	rBV3	860	768	0.05%	0.008%
39	8.153	1021	1025	1031	rBV9	1523	2906	0.21%	0.030%
40	8.208	1032	1034	1035	rBV2	1017	698	0.05%	0.007%
41	8.275	1035	1045	1061	rBV2	461930	1398745	100.00%	14.251%
42	8.592	1095	1097	1100	rBV4	872	925	0.07%	0.009%
43	8.689	1110	1113	1116	rVB5	1384	2010	0.14%	0.020%
44	8.842	1128	1138	1148	rBV	428856	838830	59.97%	8.546%
45	9.079	1172	1177	1183	rVB2	10050	18588	1.33%	0.189%
46	9.274	1200	1209	1222	rBV	331899	672924	48.11%	6.856%
47	9.659	1268	1272	1273	rBV4	1724	2174	0.16%	0.022%
48	9.774	1290	1291	1293	rVB2	1350	769	0.05%	0.008%
49	9.933	1314	1317	1318	rBV3	738	733	0.05%	0.007%
50	10.037	1324	1334	1343	rBV	151791	282505	20.20%	2.878%
51	10.213	1361	1363	1368	rBV5	640	919	0.07%	0.009%
52	10.250	1368	1369	1373	rBV2	732	997	0.07%	0.010%
53	10.323	1373	1381	1388	rBV	619669	1080354	77.24%	11.007%
54	10.579	1417	1423	1431	rVB	98999	170999	12.23%	1.742%
55	10.695	1440	1442	1447	rVB5	1889	2477	0.18%	0.025%
56	10.799	1457	1459	1461	rVB3	1308	814	0.06%	0.008%
57	10.927	1473	1480	1492	rBV2	149675	280298	20.04%	2.856%
58	11.384	1552	1555	1556	rBV2	995	1122	0.08%	0.011%
59	11.481	1569	1571	1575	rBV4	873	857	0.06%	0.009%
60	11.628	1587	1595	1603	rBV	583969	987104	70.57%	10.057%
61	11.798	1621	1623	1624	rBV2	1202	928	0.07%	0.009%
62	11.975	1650	1652	1656	rVB4	1012	1166	0.08%	0.012%
63	12.030	1658	1661	1663	rBV2	946	1099	0.08%	0.011%
64	12.054	1663	1665	1669	rVB5	899	693	0.05%	0.007%
65	12.243	1692	1696	1700	rBV6	1205	2061	0.15%	0.021%
66	12.414	1722	1724	1727	rBV3	654	810	0.06%	0.008%
67	12.603	1749	1755	1762	rVB8	5747	12757	0.91%	0.130%
68	12.689	1762	1769	1776	rBV	286193	472101	33.75%	4.810%
69	13.219	1854	1856	1857	rBV2	837	695	0.05%	0.007%
70	13.347	1876	1877	1879	rBV	915	763	0.05%	0.008%
71	13.402	1882	1886	1887	rVV4	825	1051	0.08%	0.011%
72	13.475	1895	1898	1900	rBV4	742	853	0.06%	0.009%
73	13.554	1904	1911	1923	rBV	513517	823399	58.87%	8.389%
74	13.847	1950	1959	1969	rBV	485423	811659	58.03%	8.269%
75	14.066	1990	1995	1999	rBV	6744	10888	0.78%	0.111%
76	14.182	2012	2014	2015	rBV	884	720	0.05%	0.007%

Data Path : Z:\voasrv\HPCHEM1\MSVOA_W\Data\VW052022\
 Data File : VW023206.D
 Acq On : 20 May 2022 18:10
 Operator : SY/VA
 Sample : N2925-12
 Misc : 4.76g/10mL/MSVOA_W/SOIL
 ALS Vial : 1 Sample Multiplier: 1

Instrument :
 MSVOA_W
 ClientSampleId :
 EXXY9

Integration Parameters: LSCINT.P

Integrator: RTE
 Smoothing : OFF Filtering: 5
 Sampling : 1 Min Area: 0 % of largest Peak
 Start Thrs: 0.2 Max Peaks: 100
 Stop Thrs : 0 Peak Location: TOP

If leading or trailing edge < 100 prefer < Baseline drop else tangent >
 Peak separation: 5

Method : Z:\voasrv\HPCHEM1\MSVOA_W\Method\SFAMWLM050222SMA.M
 Title : SFAM01.0

77	14.304	2032	2034	2035	rBV2	1357	1123	0.08%	0.011%
78	14.463	2058	2060	2062	rBV3	1059	960	0.07%	0.010%
79	14.615	2080	2085	2086	rBV5	1034	1348	0.10%	0.014%
80	14.725	2099	2103	2104	rVB4	1304	1363	0.10%	0.014%
81	14.816	2116	2118	2120	rVB3	785	701	0.05%	0.007%
82	14.902	2130	2132	2134	rVB3	1084	821	0.06%	0.008%
83	14.926	2134	2136	2138	rBV3	1150	807	0.06%	0.008%
84	14.956	2138	2141	2142	rVV2	1157	970	0.07%	0.010%
85	14.975	2142	2144	2149	rVB4	1138	1037	0.07%	0.011%
86	15.030	2149	2153	2154	rBV4	980	1187	0.08%	0.012%
87	15.054	2154	2157	2160	rBV5	746	805	0.06%	0.008%
88	15.158	2172	2174	2176	rBV3	1121	1043	0.07%	0.011%
89	15.212	2181	2183	2185	rBV3	1356	1226	0.09%	0.012%
90	15.273	2192	2193	2196	rBV3	837	798	0.06%	0.008%
91	15.487	2222	2228	2234	rVB	18381	31255	2.23%	0.318%
92	15.603	2246	2247	2250	rBV3	1342	1103	0.08%	0.011%
93	15.633	2250	2252	2255	rBV4	937	1024	0.07%	0.010%
94	15.779	2273	2276	2277	rBV3	1487	1259	0.09%	0.013%
95	15.871	2287	2291	2294	rBV5	1426	2080	0.15%	0.021%
96	16.395	2375	2377	2379	rBV3	941	794	0.06%	0.008%
97	16.432	2379	2383	2386	rVV6	1193	1704	0.12%	0.017%
98	16.462	2386	2388	2391	rVB4	1023	953	0.07%	0.010%
99	16.529	2398	2399	2401	rVB2	1267	707	0.05%	0.007%
100	16.700	2424	2427	2429	rBV3	1476	1755	0.13%	0.018%

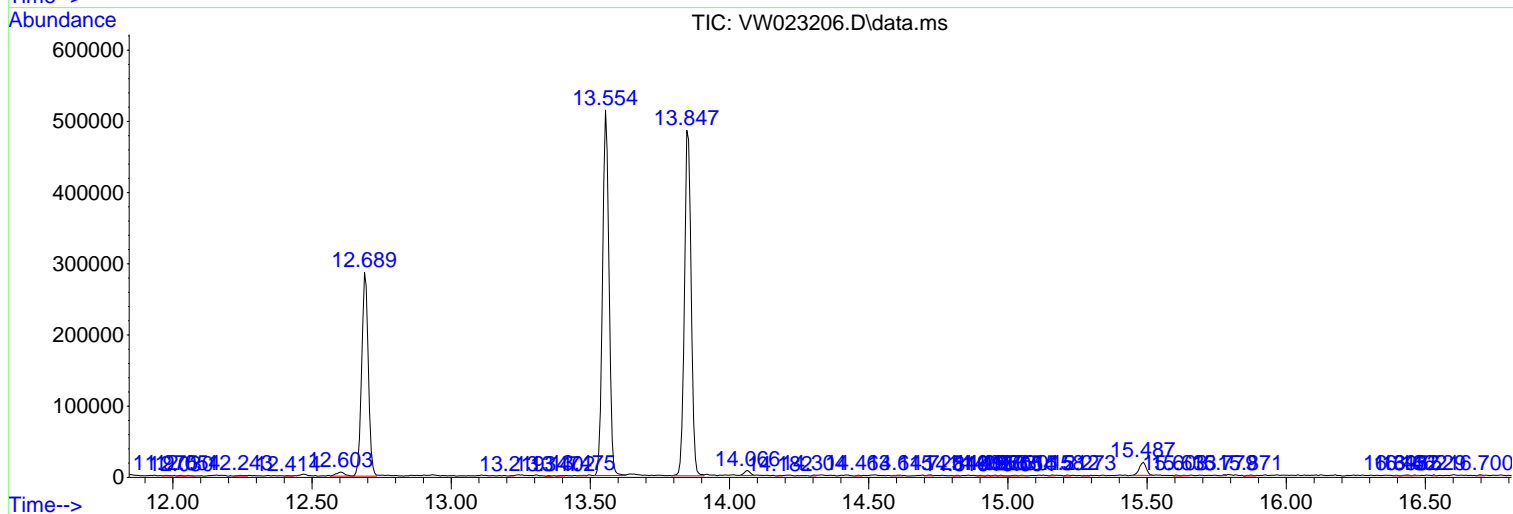
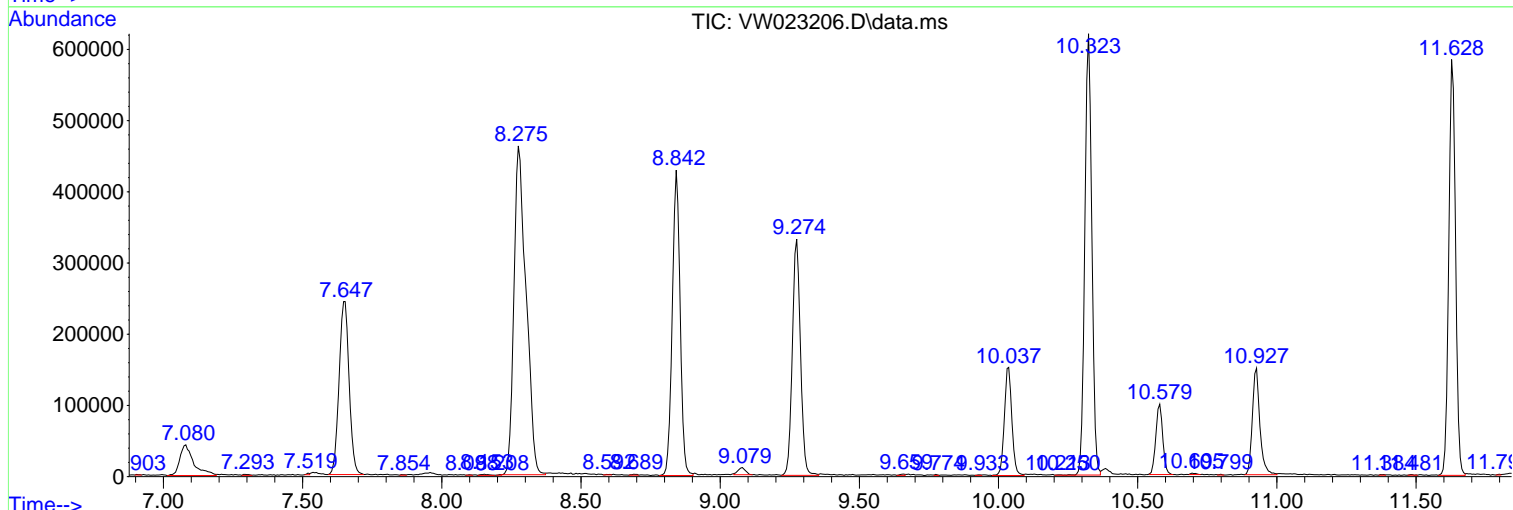
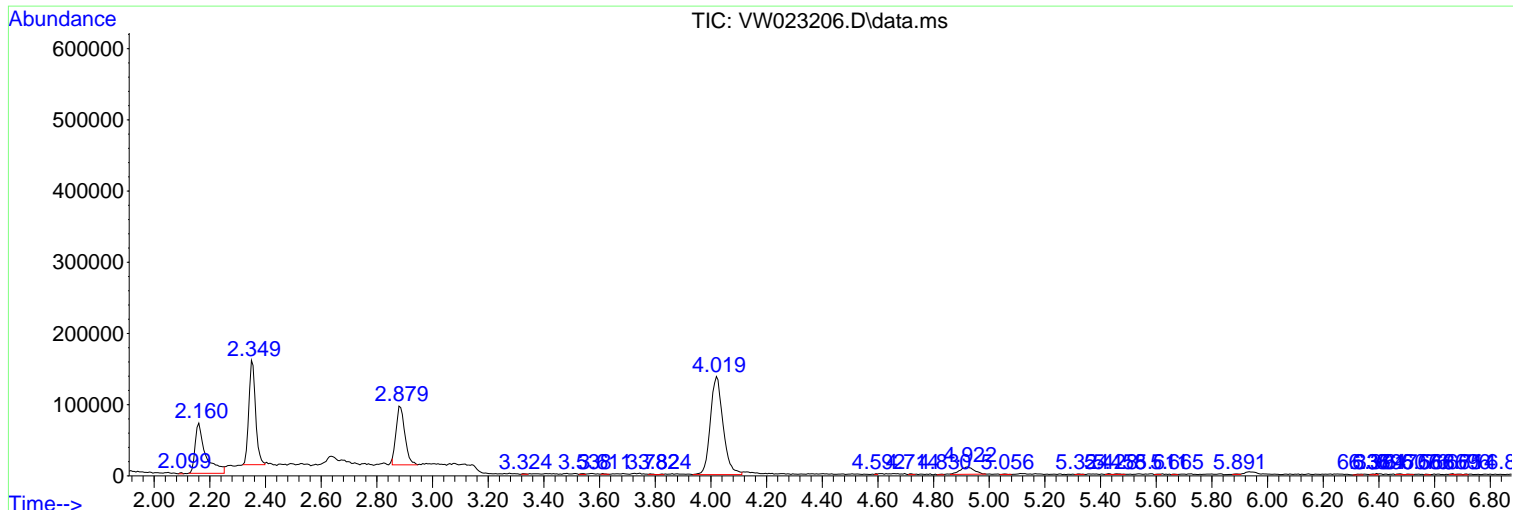
Sum of corrected areas: 9815280

Data Path : Z:\voasrv\HPCHEM1\MSVOA_W\Data\VW052022\
 Data File : VW023206.D
 Acq On : 20 May 2022 18:10
 Operator : SY/VA
 Sample : N2925-12
 Misc : 4.76g/10mL/MSVOA_W/SOIL
 ALS Vial : 1 Sample Multiplier: 1

Instrument :
 MSVOA_W
 ClientSampleId :
 EXXY9

Quant Method : Z:\voasrv\HPCHEM1\MSVOA_W\Method\SFAMWLM050222SMA.M
 Quant Title : SFAM01.0

TIC Library : C:\Database\NIST20.L
 TIC Integration Parameters: LSCINT.P



Data Path : Z:\voasrv\HPCHEM1\MSVOA_W\Data\VW052022\
 Data File : VW023206.D
 Acq On : 20 May 2022 18:10
 Operator : SY/VA
 Sample : N2925-12
 Misc : 4.76g/10mL/MSVOA_W/SOIL
 ALS Vial : 1 Sample Multiplier: 1

Instrument :
 MSVOA_W
 ClientSampleId :
 EXXY9

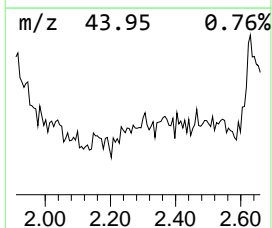
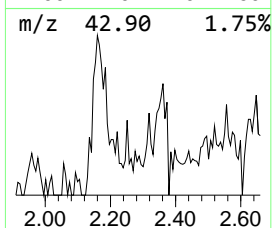
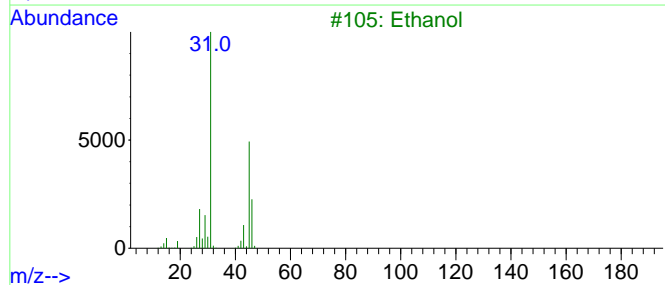
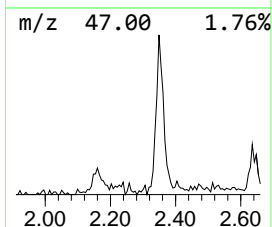
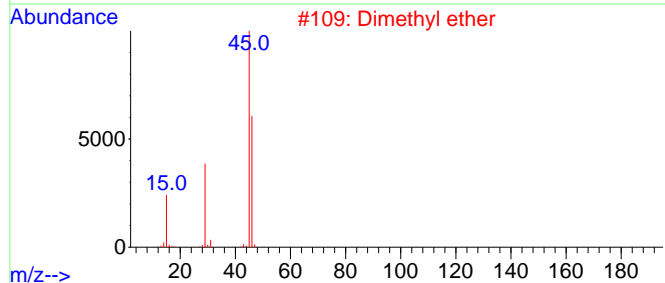
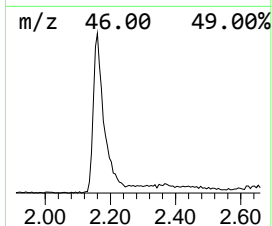
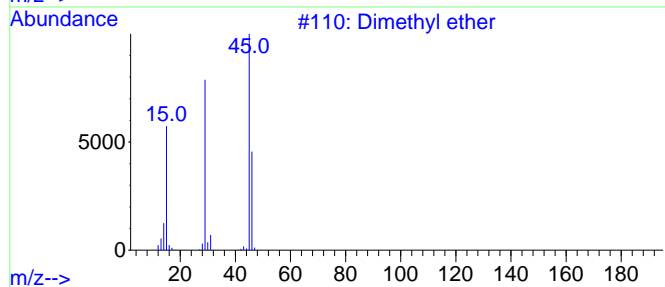
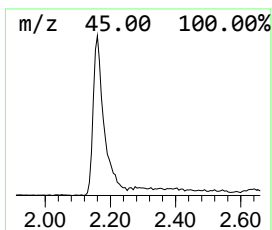
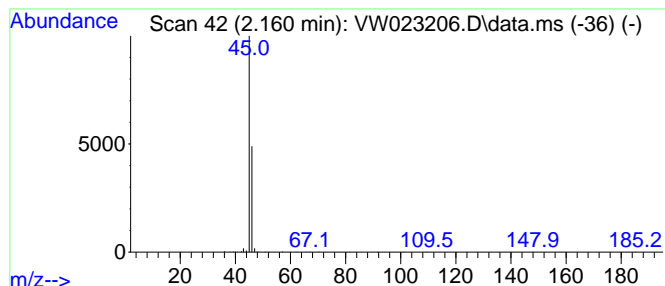
Quant Method : Z:\voasrv\HPCHEM1\MSVOA_W\Method\SFAMWLM050222SMA.M
 Quant Title : SFAM01.0

TIC Library : C:\Database\NIST0.L
 TIC Integration Parameters: LSCINT.P

 Peak Number 1 Dimethyl ether Concentration Rank 2

R.T.	EstConc	Area	Relative to ISTD	R.T.
2.160	5.49 ug/L	184176	1,4-Difluorobenzene	8.842

Hit#	of	5	Tentative ID	MW	MolForm	CAS#	Qual
1			Dimethyl ether	46	C2H6O	000115-10-6	80
2			Dimethyl ether	46	C2H6O	000115-10-6	56
3			Ethanol	46	C2H6O	000064-17-5	7
4			Formic acid	46	CH2O2	000064-18-6	7
5			Ethanol	46	C2H6O	000064-17-5	7



Data Path : Z:\voasrv\HPCHEM1\MSVOA_W\Data\VW052022\
Data File : VW023206.D
Acq On : 20 May 2022 18:10
Operator : SY/VA
Sample : N2925-12
Misc : 4.76g/10mL/MSVOA_W/SOIL
ALS Vial : 1 Sample Multiplier: 1

Instrument :
MSVOA_W
ClientSampleId :
EXXY9

Quant Method : Z:\voasrv\HPCHEM1\MSVOA_W\Method\SFAMWLM050222SMA.M
Quant Title : SFAM01.0

TIC Library : C:\Database\NIST0.L
TIC Integration Parameters: LSCINT.P

TIC Top Hit name	RT	EstConc	Units	Response	--Internal Standard--			
					#	RT	Resp	Conc
Dimethyl ether	2.160	5.5	ug/L	184176	1	8.842	838830	25.0