

Data Path : Z:\voasrv\HPCHEM1\MSVOA_W\Data\VW052224\
 Data File : VW028679.D
 Acq On : 22 May 2024 11:38
 Operator : SY/MD
 Sample : P2548-07RE
 Mi sc : 4.66g/10mL/MSVOA_W/SOIL/B
 ALS Vial : 1 Sample Multiplier: 1

Instrument :
 MSVOA_W
 ClientSampleId :

Quant Time: May 23 00:22:23 2024
 Quant Method : Z:\voasrv\HPCHEM1\MSVOA_W\Method\SFAMWLM050224SMA.M
 Quant Title : SFAM01.0
 QLast Update : Thu May 23 00:20:47 2024
 Response via : Initial Calibration

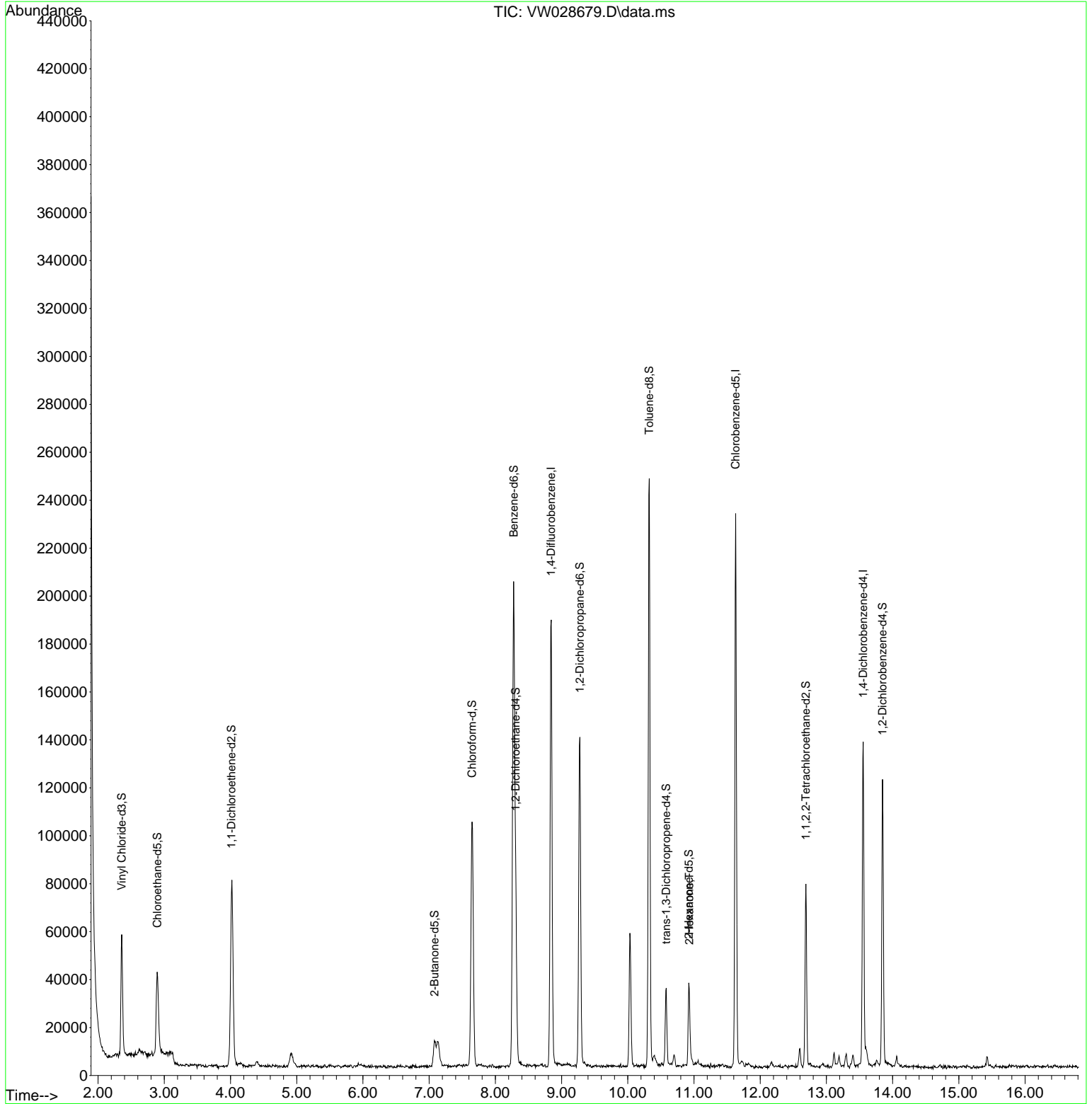
Compound	R. T.	QI on	Response	Conc	Units	Dev(Min)
Internal Standards						
1) 1,4-Difluorobenzene	8.843	114	148545	25.000	ug/L	0.00
28) Chlorobenzene-d5	11.629	117	117143	25.000	ug/L	0.00
58) 1,4-Dichlorobenzene-d4	13.556	152	31838	25.000	ug/L	0.00
System Monitoring Compounds						
4) Vinyl Chloride-d3	2.357	65	55947	19.834	ug/L	0.00
Spike Amount	25.000	Range	30 - 150	Recovery	=	79.320%
7) Chloroethane-d5	2.893	69	48036	22.240	ug/L	0.00
Spike Amount	25.000	Range	30 - 150	Recovery	=	88.960%
11) 1,1-Dichloroethane-d2	4.015	65	23884	20.266	ug/L	-0.01
Spike Amount	25.000	Range	45 - 110	Recovery	=	81.080%
21) 2-Butanone-d5	7.081	46	16915	22.985	ug/L	0.00
Spike Amount	50.000	Range	20 - 135	Recovery	=	45.960%
24) Chloroform-d	7.648	84	104121	22.432	ug/L	0.00
Spike Amount	25.000	Range	40 - 150	Recovery	=	89.720%
26) 1,2-Dichloroethane-d4	8.307	65	55309	20.814	ug/L	0.00
Spike Amount	25.000	Range	70 - 130	Recovery	=	83.240%
32) Benzene-d6	8.276	84	193965	24.817	ug/L	0.00
Spike Amount	25.000	Range	20 - 135	Recovery	=	99.280%
36) 1,2-Dichloropropane-d6	9.276	67	61490	26.146	ug/L	0.00
Spike Amount	25.000	Range	70 - 120	Recovery	=	104.600%
41) Toluene-d8	10.325	98	155347	22.444	ug/L	0.00
Spike Amount	25.000	Range	30 - 130	Recovery	=	89.760%
43) trans-1,3-Dichloropropene	10.581	79	17241	18.223	ug/L	0.00
Spike Amount	25.000	Range	30 - 135	Recovery	=	72.880%
47) 2-Hexanone-d5	10.922	63	10071	24.828	ug/L	0.00
Spike Amount	50.000	Range	20 - 135	Recovery	=	49.660%
56) 1,1,2,2-Tetrachloroethane	12.690	84	37106	18.816	ug/L	0.00
Spike Amount	25.000	Range	45 - 120	Recovery	=	75.280%
66) 1,2-Dichlorobenzene-d4	13.848	152	27236	22.444	ug/L	0.00
Spike Amount	25.000	Range	75 - 120	Recovery	=	89.760%
Target Compounds						
48) 2-Hexanone	10.928	43	1650	1.735	ug/L #	80

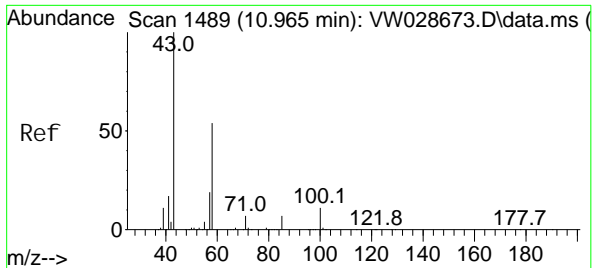
(#) = qualifier out of range (m) = manual integration (+) = signals summed

Data Path : Z:\voasrv\HPCHEM1\MSVOA_W\Data\VW052224\
 Data File : VW028679.D
 Acq On : 22 May 2024 11:38
 Operator : SY/MD
 Sample : P2548-07RE
 Misc : 4.66g/10mL/MSVOA_W/SOIL/B
 ALS Vial : 1 Sample Multiplier: 1

Instrument :
 MSVOA_W
 ClientSampleId :

Quant Time: May 23 00:22:23 2024
 Quant Method : Z:\voasrv\HPCHEM1\MSVOA_W\Method\SFAMWLM050224SMA.M
 Quant Title : SFAM01.0
 QLast Update : Thu May 23 00:20:47 2024
 Response via : Initial Calibration





2-Hexanone
 Concen: 1.735 ug/L
 RT: 10.928 min Scan# 14
 Delta R.T. -0.037 min
 Lab File: VW028679.D
 Acq: 22 May 2024 11:38

Instrument : MSVOA_W
 ClientSampleId :

Tgt Ion	Resp	Lower	Upper
43	1650		
58	43.7	41.0	61.4
57	36.1	14.8	22.2#
100	0.0	8.6	12.8#

