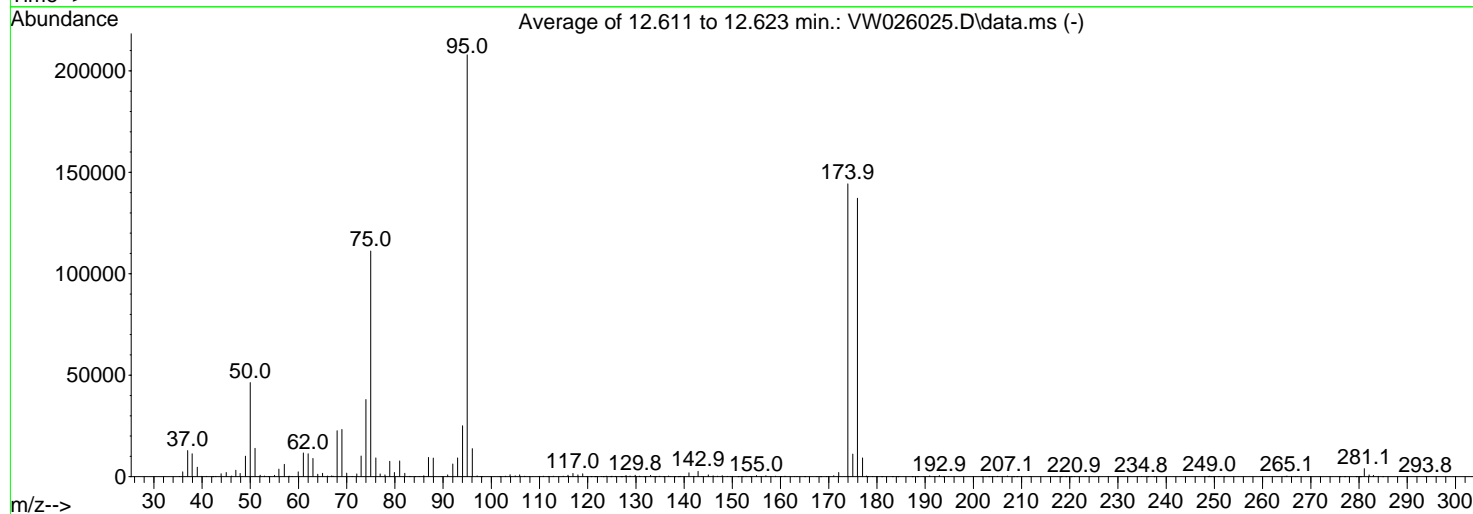
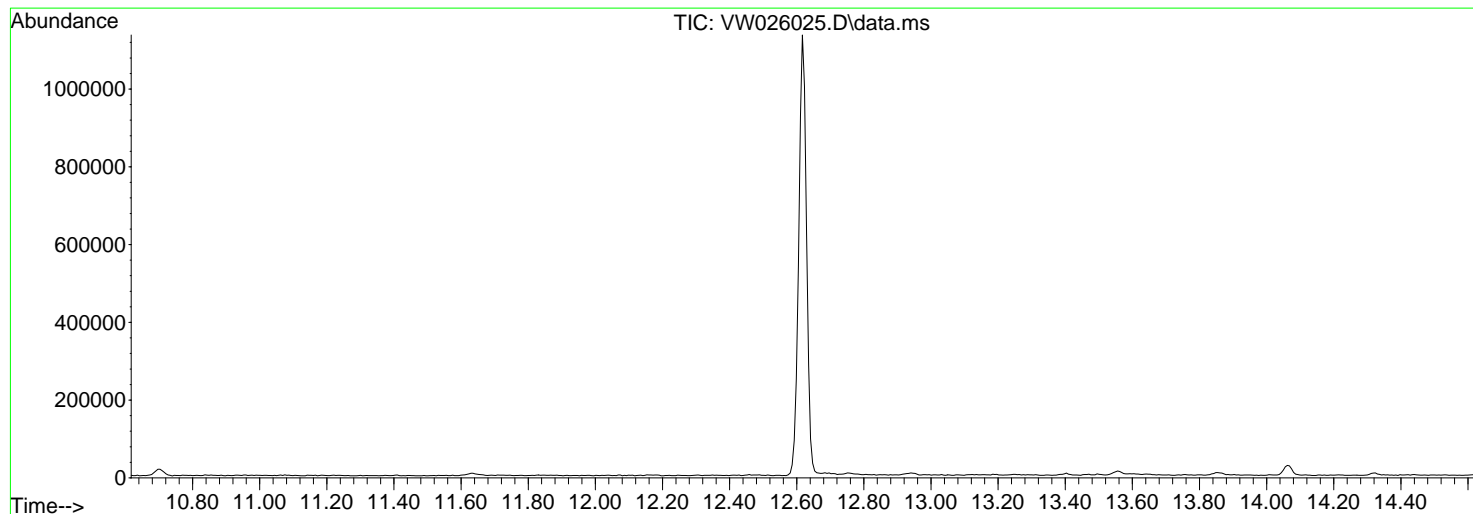


Data Path : Z:\voasrv\HPCHEM1\MSVOA\_W\Data\VW052423\  
 Data File : VW026025.D  
 Acq On : 24 May 2023 07:10  
 Operator : SY/MD  
 Sample : BFB522  
 Misc : 5.00g/10mL/MSVOA\_W/SOIL  
 ALS Vial : 1 Sample Multiplier: 1

Instrument :  
 MSVOA\_W  
 ClientSampleId :  
 BFB522

Integration File: rteint.p

Method : Z:\voasrv\HPCHEM1\MSVOA\_V\Method\SFAMVTR01223WMA.M  
 Title : TRACE VOA SFAM1.0  
 Last Update : Thu Jan 12 18:58:37 2023



AutoFind: Scans 1759, 1760, 1761; Background Corrected with Scan 1750

Target Mass	Rel. to Mass	Lower Limit%	Upper Limit%	Rel. Abn%	Raw Abn	Result Pass/Fail
50	95	15	40	22.3	46402	PASS
75	95	30	80	53.5	111213	PASS
95	95	100	100	100.0	207915	PASS
96	95	5	9	6.7	13839	PASS
173	174	0.00	2	0.0	0	PASS
174	95	50	120	69.4	144296	PASS
175	174	5	9	7.7	11140	PASS
176	174	95	105	95.1	137256	PASS
177	176	5	10	6.7	9211	PASS

m/z	Abundance
36.00	476.0
37.00	190.0
37.90	182.0
39.00	101.0
39.30	105.0
39.90	645.0
41.20	140.0
41.90	112.0
42.80	98.0
43.30	95.0
44.00	315.0
45.10	76.0
46.50	81.0
47.10	82.0
47.90	79.0
49.20	112.0
50.10	94.0
51.00	65.0
53.20	104.0
54.50	90.0
55.80	70.0
57.20	262.0
59.20	131.0
60.20	67.0
61.00	125.0
64.20	56.0
66.90	67.0
67.50	74.0
68.70	99.0
69.10	173.0
70.10	64.0
72.30	113.0
73.20	51.0
76.90	83.0
77.60	92.0
78.10	84.0
79.40	72.0
82.20	58.0
90.00	71.0
92.70	76.0
93.60	50.0
103.90	52.0
104.70	73.0
110.70	51.0
116.60	63.0
119.50	52.0
141.40	53.0
144.00	76.0
147.40	60.0
186.00	57.0
260.40	73.0
286.70	60.0

**Instrument :**  
MSVOA\_W  
**ClientSampleId :**  
BFB522

m/z	Abundance
35.30	206.0
36.00	2683.0
37.00	12990.0
38.00	11564.0
39.10	4665.0
40.10	760.0
40.80	171.0
42.00	147.0
42.90	202.0
44.00	1397.0
45.00	1955.0
46.10	431.0
47.00	3124.0
47.90	1502.0
49.00	9482.0
50.00	43640.0
51.00	13468.0
52.00	637.0
52.90	307.0
53.80	164.0
55.00	547.0
56.00	3873.0
57.00	5743.0
57.90	395.0
59.20	171.0
60.00	2329.0
61.00	11010.0
62.00	10879.0
63.00	8759.0
64.00	1365.0
64.90	1671.0
66.10	403.0
66.90	566.0
68.00	20064.0
69.00	21760.0
70.00	1615.0
71.20	142.0
72.10	1486.0
73.00	9267.0
74.00	34136.0
75.00	103488.0
76.00	8820.0
77.00	1310.0
78.00	969.0
78.90	7058.0
79.90	1970.0
81.00	7335.0
82.10	1337.0
83.10	398.0
85.10	77.0
86.00	394.0
87.00	8665.0
87.90	7907.0
89.70	103.0
90.90	904.0
92.00	5307.0
93.00	8846.0
94.10	23952.0
95.00	190464.0
96.10	13331.0
97.10	297.0
97.70	149.0
103.00	312.0
103.80	995.0
104.90	364.0
105.90	776.0
107.00	167.0
107.90	134.0
110.00	178.0
110.90	292.0
111.80	162.0
112.90	241.0
114.90	277.0
115.90	690.0
116.90	1610.0
117.90	853.0
118.90	1340.0
119.80	144.0
121.50	55.0
121.90	74.0
122.80	83.0
123.20	63.0
123.80	159.0
125.10	467.0
125.80	202.0
126.90	84.0
127.80	710.0
128.90	339.0
129.80	645.0
130.80	316.0
131.70	103.0
133.00	1081.0

Instrument :  
MSVOA\_W  
ClientSampleId :  
BFB522

133.70	164.0
134.80	270.0
135.80	115.0
136.80	315.0
139.30	140.0
141.00	1476.0
141.90	267.0
142.90	2275.0
143.70	216.0
144.20	155.0
145.00	1007.0
146.00	283.0
146.90	276.0
147.90	465.0
149.00	209.0
149.90	240.0
151.80	99.0
152.10	136.0
152.90	152.0
154.00	220.0
155.00	481.0
156.00	79.0
156.90	421.0
158.10	91.0
159.00	208.0
161.00	153.0
162.90	71.0
163.40	73.0
165.00	71.0
167.60	54.0
169.90	109.0
171.10	479.0
172.10	1957.0
173.90	118648.0
175.00	8957.0
176.00	115704.0
177.00	8008.0
177.80	254.0
178.20	210.0
179.10	150.0
179.90	58.0
181.00	87.0
183.20	51.0
187.40	54.0
188.40	51.0
189.80	62.0
191.00	608.0
192.00	179.0
193.00	827.0
194.10	166.0
194.80	109.0
202.60	57.0
203.20	67.0
203.80	56.0
205.10	168.0
207.10	505.0
208.30	79.0
209.00	89.0
211.70	88.0
220.90	65.0
234.90	80.0
236.20	85.0
248.00	55.0
249.00	474.0
249.70	111.0
250.30	70.0
251.10	237.0
252.00	84.0
264.90	629.0
266.10	248.0
266.80	163.0
276.00	54.0
279.40	107.0
281.10	6610.0
282.10	1623.0
283.00	947.0
284.10	291.0
284.90	56.0

**Instrument :**  
MSVOA\_W  
**ClientSampleId :**  
BFB522

m/z	Abundance
36.00	3157.0
37.00	13925.0
38.00	12724.0
39.00	5641.0
40.10	880.0
40.90	236.0
41.30	167.0
42.00	172.0
42.70	155.0
43.00	174.0
44.00	2001.0
45.00	2306.0
46.20	355.0
47.00	3464.0
48.00	2040.0
49.00	11921.0
50.00	52616.0
51.00	15761.0
52.10	770.0
53.00	405.0
54.00	203.0
55.00	885.0
56.00	4099.0
57.10	6713.0
58.10	474.0
58.70	208.0
60.00	2473.0
61.00	13503.0
62.00	12699.0
63.00	10045.0
64.10	1514.0
65.00	2074.0
66.10	298.0
67.00	873.0
68.00	25928.0
69.00	26216.0
70.00	1967.0
71.20	144.0
72.10	1588.0
73.00	11229.0
74.00	42232.0
75.00	123648.0
76.10	10350.0
77.00	1498.0
77.90	1101.0
78.90	8694.0
79.90	2225.0
81.00	8745.0
82.00	2038.0
83.30	216.0
84.20	92.0
85.10	81.0
86.00	409.0
87.00	10126.0
88.00	9943.0
89.80	79.0
90.90	1010.0
92.00	7249.0
93.00	10345.0
94.00	26848.0
95.00	226432.0
96.00	15345.0
97.00	600.0
98.00	55.0
102.90	215.0
103.90	996.0
104.90	391.0
105.90	991.0
106.90	289.0
107.90	73.0
110.00	173.0
110.80	259.0
112.00	371.0
112.90	231.0
114.90	258.0
115.80	676.0
117.00	1705.0
118.00	1014.0
118.90	1550.0
119.90	111.0
121.90	152.0
122.90	122.0
123.80	258.0
125.00	227.0
125.80	129.0
127.10	76.0
128.00	820.0
128.80	366.0
129.90	797.0
130.70	381.0
132.20	175.0
133.10	493.0

Instrument :  
MSVOA\_W  
ClientSampleId :  
BFB522

133.90	162.0
135.00	299.0
136.90	459.0
138.80	79.0
139.30	117.0
141.00	2277.0
142.10	283.0
142.90	2781.0
144.00	303.0
145.00	1037.0
145.90	403.0
146.90	226.0
147.90	581.0
148.90	159.0
149.60	184.0
151.90	135.0
152.80	134.0
153.70	100.0
155.00	498.0
156.90	472.0
158.10	84.0
158.90	314.0
160.00	80.0
160.90	258.0
162.90	93.0
163.40	106.0
167.50	87.0
169.60	159.0
171.00	603.0
172.00	2239.0
174.00	167872.0
175.00	12273.0
176.00	148544.0
177.00	10518.0
177.90	301.0
179.10	134.0
184.40	58.0
187.20	77.0
189.70	98.0
190.90	277.0
192.00	109.0
192.90	495.0
193.90	125.0
194.90	72.0
201.80	55.0
202.70	68.0
203.90	75.0
204.90	134.0
207.00	286.0
208.40	54.0
211.80	63.0
220.30	56.0
221.00	109.0
234.80	103.0
237.50	53.0
247.90	54.0
249.00	282.0
250.10	184.0
250.80	156.0
264.60	330.0
265.10	516.0
265.90	201.0
267.20	94.0
277.00	59.0
280.10	172.0
281.10	3879.0
282.10	1034.0
282.90	524.0
284.00	169.0

Instrument :  
MSVOA\_W  
ClientSampleId :  
BFB522

m/z	Abundance
36.00	2738.0
37.00	12146.0
38.00	10203.0
39.00	3983.0
40.00	722.0
41.00	142.0
42.20	135.0
43.00	246.0
43.90	1847.0
45.00	2073.0
46.10	285.0
47.00	3111.0
48.00	1363.0
49.00	9169.0
50.00	43232.0
51.00	12874.0
52.10	791.0
52.90	173.0
53.20	187.0
53.90	136.0
55.10	606.0
56.00	3288.0
57.00	6466.0
58.10	219.0
59.10	216.0
59.90	2348.0
61.00	10862.0
62.00	10332.0
63.00	8276.0
63.90	957.0
65.10	1300.0
65.90	307.0
67.20	647.0
68.00	22024.0
69.00	22272.0
70.00	1741.0
71.10	121.0
72.10	1379.0
73.00	10261.0
74.00	37728.0
75.00	106504.0
76.10	8442.0
77.00	1368.0
77.90	744.0
79.00	7010.0
79.90	2062.0
81.00	7079.0
82.00	1817.0
82.90	190.0
84.30	86.0
85.00	64.0
86.00	546.0
86.90	9510.0
88.00	9520.0
89.70	113.0
91.00	749.0
92.00	6127.0
93.00	8456.0
94.00	24376.0
95.00	206848.0
96.00	12840.0
97.00	420.0
101.80	64.0
102.90	228.0
104.00	1075.0
105.00	380.0
105.90	812.0
106.90	237.0
107.90	64.0
109.80	210.0
110.90	322.0
111.90	154.0
112.70	186.0
114.90	243.0
116.00	774.0
116.90	1518.0
117.90	777.0
119.00	1354.0
119.90	143.0
120.70	58.0
122.90	74.0
123.90	205.0
124.80	140.0
125.70	156.0
127.90	754.0
128.70	307.0
129.80	723.0
131.00	323.0
132.10	145.0
132.90	242.0
133.50	166.0
134.10	100.0

Instrument :  
MSVOA\_W  
ClientSampleId :  
BFB522

134.90	390.0
136.70	270.0
137.10	288.0
138.00	65.0
139.10	142.0
140.00	144.0
141.00	1916.0
141.90	202.0
142.90	2811.0
144.10	81.0
145.00	643.0
146.10	407.0
147.00	240.0
147.90	492.0
149.00	135.0
150.00	216.0
151.20	56.0
151.90	132.0
152.80	176.0
154.00	86.0
155.00	611.0
155.90	157.0
157.00	488.0
157.90	107.0
158.90	219.0
160.80	205.0
167.60	59.0
168.30	74.0
169.50	98.0
170.00	117.0
171.00	323.0
172.00	1861.0
174.00	146368.0
175.00	12191.0
175.90	147520.0
177.00	9108.0
177.90	337.0
179.20	68.0
184.30	79.0
191.00	235.0
193.00	257.0
193.70	67.0
194.90	107.0
202.70	66.0
204.90	94.0
207.00	103.0
218.20	56.0
219.20	64.0
248.70	124.0
249.20	124.0
265.00	191.0
267.10	86.0
276.00	57.0
277.00	54.0
280.30	139.0
281.10	1482.0
283.10	331.0
284.20	62.0
293.80	68.0

**Instrument :**  
MSVOA\_W  
**ClientSampleId :**  
BFB522