

Data Path : Z:\voasrv\HPCHEM1\MSVOA_W\Data\VW052523\
 Data File : VW026046.D
 Acq On : 25 May 2023 17:26
 Operator : SY/MD
 Sample : 02950-22
 Misc : 3.55g/10mL/MSVOA_W/SOIL
 ALS Vial : 1 Sample Multiplier: 1

Instrument :
 MSVOA_W
 ClientSampleId :
 EW998

Quant Time: May 26 00:36:01 2023
 Quant Method : Z:\voasrv\HPCHEM1\MSVOA_W\Method\SFAMWLM050123SMA.M
 Quant Title : SFAM01.0
 QLast Update : Fri May 26 00:33:05 2023
 Response via : Initial Calibration

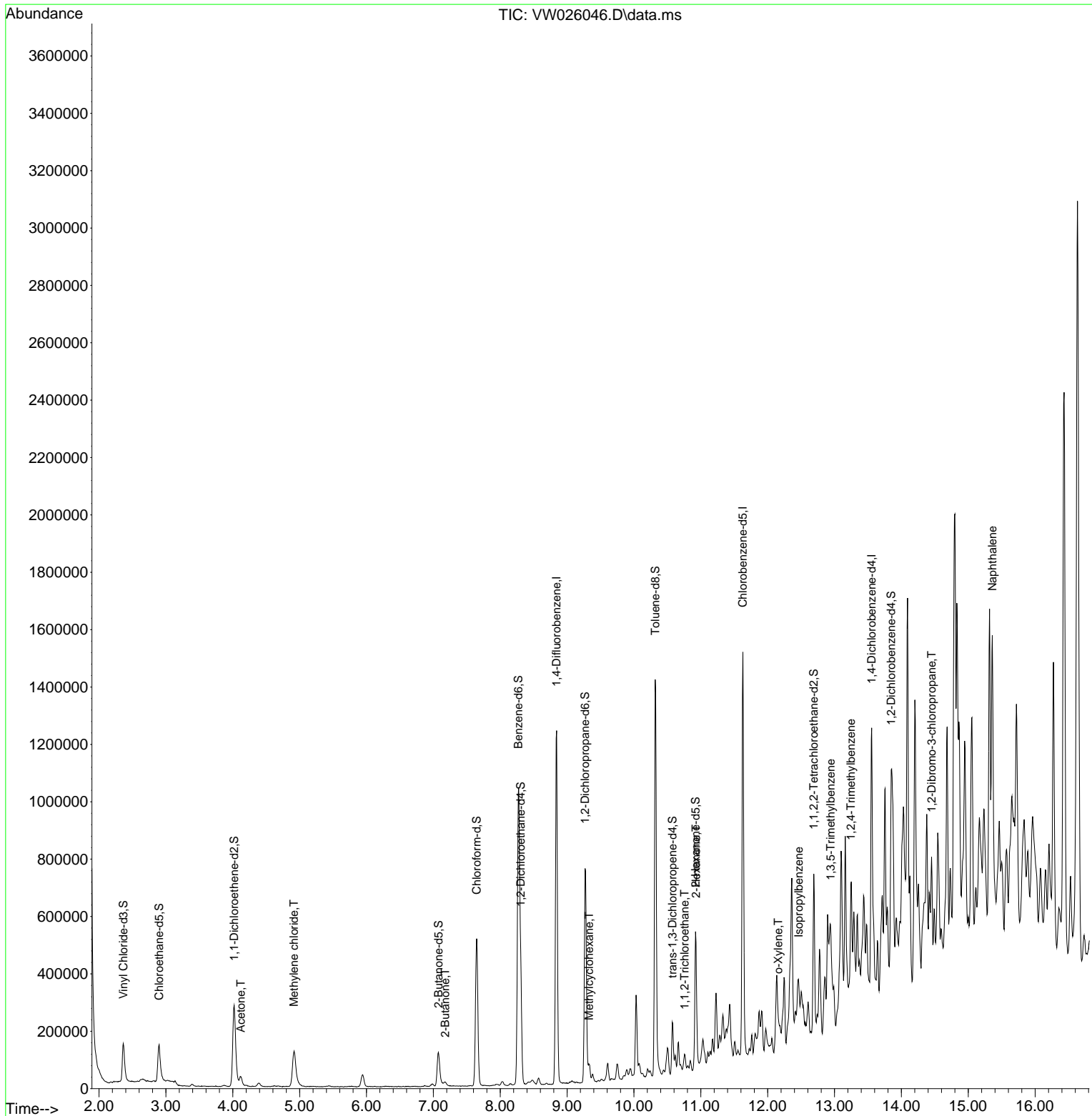
Compound	R.T.	QIon	Response	Conc	Units	Dev(Min)
Internal Standards						
1) 1,4-Difluorobenzene	8.843	114	975701	25.000	ug/L	0.00
28) Chlorobenzene-d5	11.629	117	726929	25.000	ug/L	0.00
58) 1,4-Dichlorobenzene-d4	13.556	152	224437	25.000	ug/L	0.00
System Monitoring Compounds						
4) Vinyl Chloride-d3	2.363	65	197169	14.260	ug/L	0.00
Spiked Amount	25.000	Range 30 - 150	Recovery =	57.040%		
7) Chloroethane-d5	2.899	69	197481	19.266	ug/L	0.00
Spiked Amount	25.000	Range 30 - 150	Recovery =	77.080%		
11) 1,1-Dichloroethene-d2	4.021	65	110199	15.917	ug/L	0.00
Spiked Amount	25.000	Range 45 - 110	Recovery =	63.680%		
21) 2-Butanone-d5	7.075	46	213284	46.662	ug/L	0.00
Spiked Amount	50.000	Range 20 - 135	Recovery =	93.320%		
24) Chloroform-d	7.648	84	515345	18.317	ug/L	0.00
Spiked Amount	25.000	Range 40 - 150	Recovery =	73.280%		
26) 1,2-Dichloroethane-d4	8.307	65	314898	19.793	ug/L	0.00
Spiked Amount	25.000	Range 70 - 130	Recovery =	79.160%		
32) Benzene-d6	8.270	84	1044300	21.986	ug/L	0.00
Spiked Amount	25.000	Range 20 - 135	Recovery =	87.960%		
36) 1,2-Dichloropropane-d6	9.270	67	350380	23.055	ug/L	0.00
Spiked Amount	25.000	Range 70 - 120	Recovery =	92.240%		
41) Toluene-d8	10.319	98	854590	20.176	ug/L	0.00
Spiked Amount	25.000	Range 30 - 130	Recovery =	80.720%		
43) trans-1,3-Dichloroprop...	10.575	79	97739	15.866	ug/L	0.00
Spiked Amount	25.000	Range 30 - 135	Recovery =	63.480%		
47) 2-Hexanone-d5	10.922	63	151357	58.406	ug/L	0.00
Spiked Amount	50.000	Range 20 - 135	Recovery =	116.820%		
56) 1,1,2,2-Tetrachloroeth...	12.690	84	236458	20.414	ug/L	0.00
Spiked Amount	25.000	Range 45 - 120	Recovery =	81.640%		
66) 1,2-Dichlorobenzene-d4	13.848	152	163259	19.954	ug/L	0.00
Spiked Amount	25.000	Range 75 - 120	Recovery =	79.800%		
Target Compounds						
13) Acetone	4.118	43	56981	14.059	ug/L	100
16) Methylene chloride	4.917	84	104334	5.185	ug/L	90
22) 2-Butanone	7.179	43	24292	4.341	ug/L	89
35) Methylcyclohexane	9.331	83	13853	0.604	ug/L	100
45) 1,1,2-Trichloroethane	10.758	97	17329	1.880	ug/L #	31
48) 2-Hexanone	10.928	43	56094	8.730	ug/L #	41
54) o-Xylene	12.160	106	10426	0.520	ug/L	88
60) Isopropylbenzene	12.465	105	57010	1.671	ug/L	95
62) 1,3,5-Trimethylbenzene	12.940	105	60183	2.227	ug/L	99
63) 1,2,4-Trimethylbenzene	13.245	105	213269	8.553	ug/L	98
68) 1,2-Dibromo-3-chloropr...	14.452	75	3419	2.780	ug/L #	46
71) Naphthalene	15.360	128	849755	55.127	ug/L	99

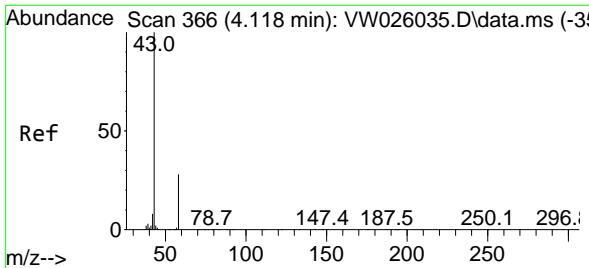
(#) = qualifier out of range (m) = manual integration (+) = signals summed

Data Path : Z:\voasrv\HPCHEM1\MSVOA_W\Data\VW052523\
 Data File : VW026046.D
 Acq On : 25 May 2023 17:26
 Operator : SY/MD
 Sample : 02950-22
 Misc : 3.55g/10mL/MSVOA_W/SOIL
 ALS Vial : 1 Sample Multiplier: 1

Instrument :
 MSVOA_W
 ClientSampleId :
 EW998

Quant Time: May 26 00:36:01 2023
 Quant Method : Z:\voasrv\HPCHEM1\MSVOA_W\Method\SFAMWLM050123SMA.M
 Quant Title : SFAM01.0
 QLast Update : Fri May 26 00:33:05 2023
 Response via : Initial Calibration

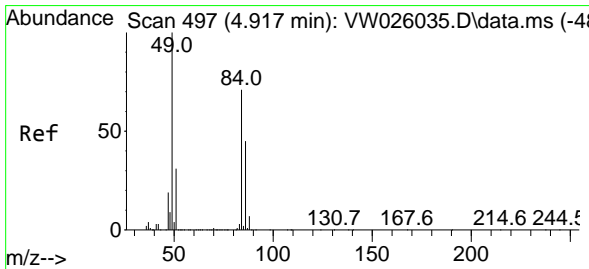
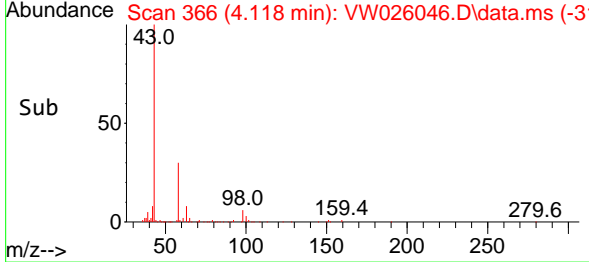
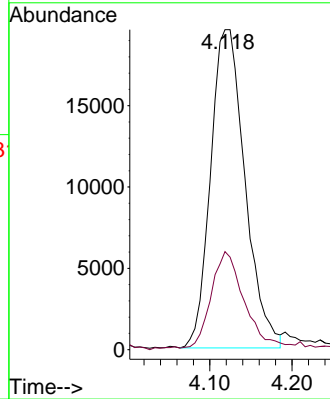
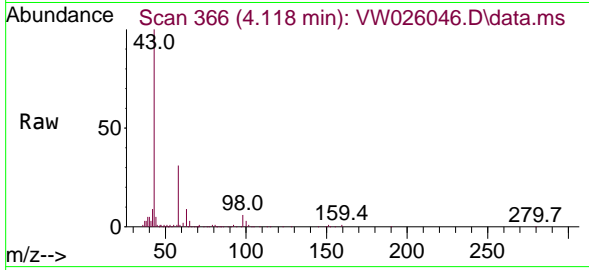




#13
 Acetone
 Concen: 14.059 ug/L
 RT: 4.118 min Scan# 30
 Delta R.T. 0.000 min
 Lab File: VW026046.D
 Acq: 25 May 2023 17:26

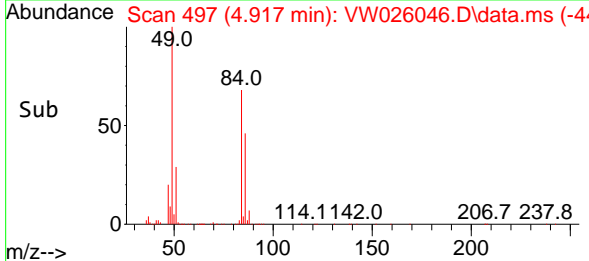
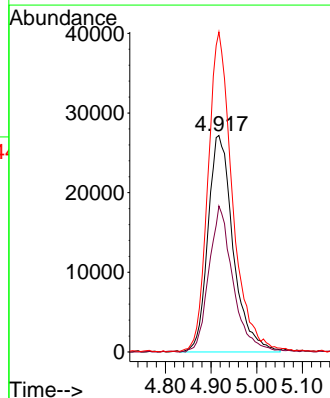
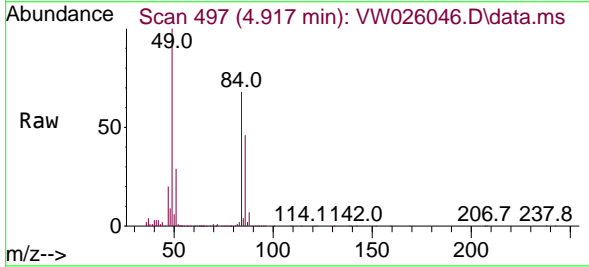
Instrument :
 MSVOA_W
 ClientSampleId :
 EW998

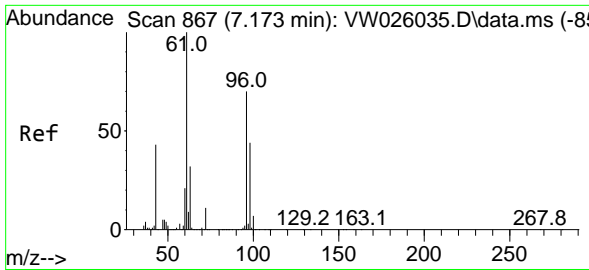
Tgt Ion: 43 Resp: 56981
 Ion Ratio Lower Upper
 43 100
 58 29.3 0.0 58.2



#16
 Methylene chloride
 Concen: 5.185 ug/L
 RT: 4.917 min Scan# 497
 Delta R.T. 0.000 min
 Lab File: VW026046.D
 Acq: 25 May 2023 17:26

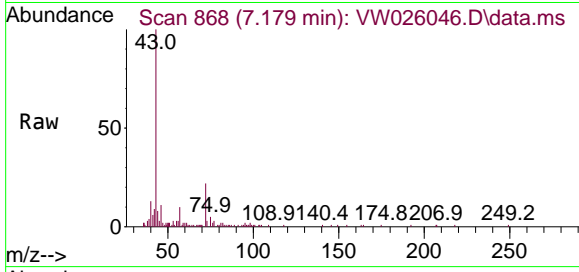
Tgt Ion: 84 Resp: 104334
 Ion Ratio Lower Upper
 84 100
 86 67.4 41.7 77.5
 49 147.8 95.3 177.1



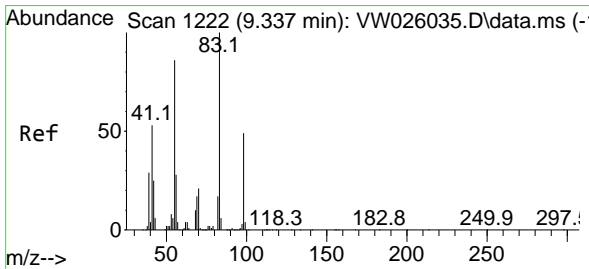
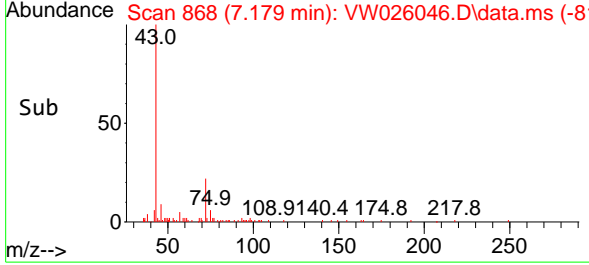
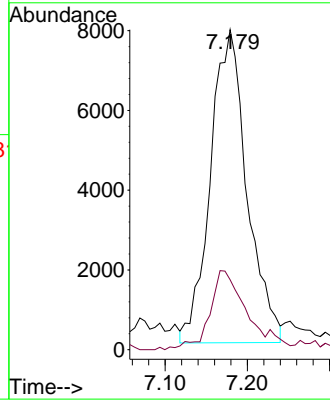


#22
 2-Butanone
 Concen: 4.341 ug/L
 RT: 7.179 min Scan# 80
 Delta R.T. 0.006 min
 Lab File: VW026046.D
 Acq: 25 May 2023 17:26

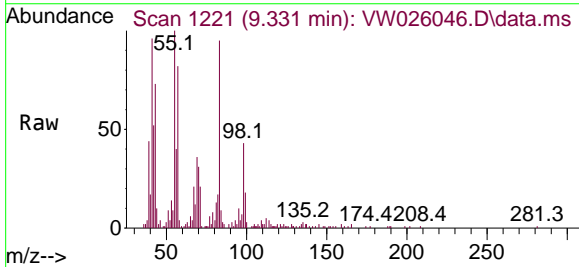
Instrument : MSVOA_W
 ClientSampleId : EW998



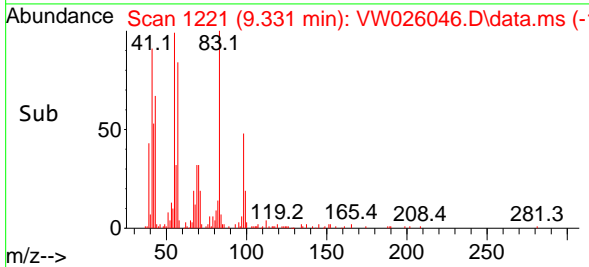
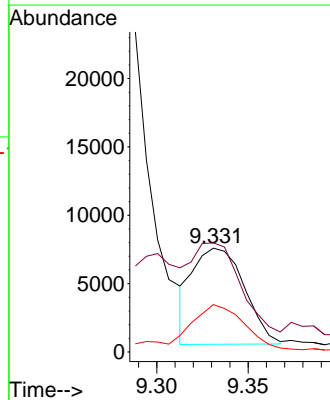
Tgt Ion: 43 Resp: 24292
 Ion Ratio Lower Upper
 43 100
 72 18.4 11.8 35.4

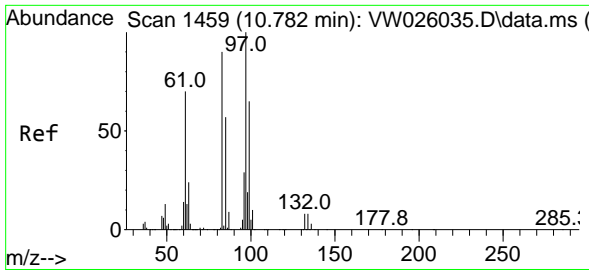


#35
 Methylcyclohexane
 Concen: 0.604 ug/L
 RT: 9.331 min Scan# 1221
 Delta R.T. -0.006 min
 Lab File: VW026046.D
 Acq: 25 May 2023 17:26



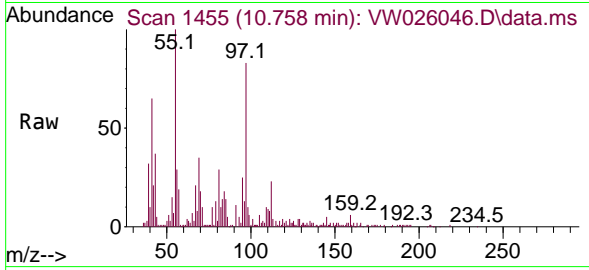
Tgt Ion: 83 Resp: 13853
 Ion Ratio Lower Upper
 83 100
 55 86.2 69.0 103.4
 98 46.9 37.1 55.7





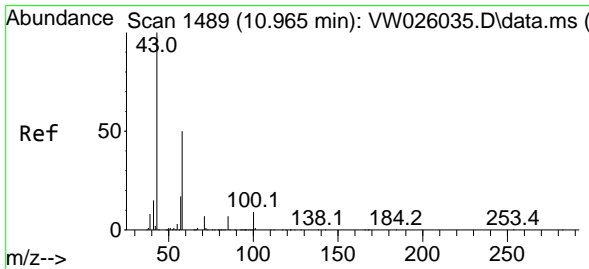
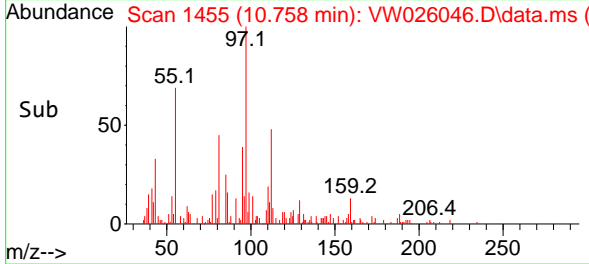
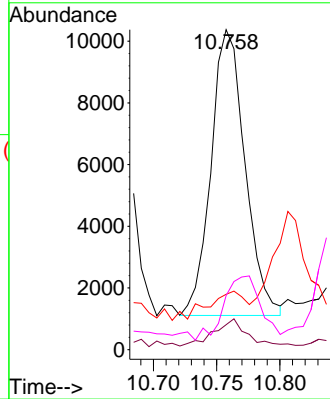
#45
 1,1,2-Trichloroethane
 Concen: 1.880 ug/L
 RT: 10.758 min Scan# 1455
 Delta R.T. -0.024 min
 Lab File: VW026046.D
 Acq: 25 May 2023 17:26

Instrument : MSVOA_W
 ClientSampleId : EW998



Tgt Ion: 97 Resp: 17329

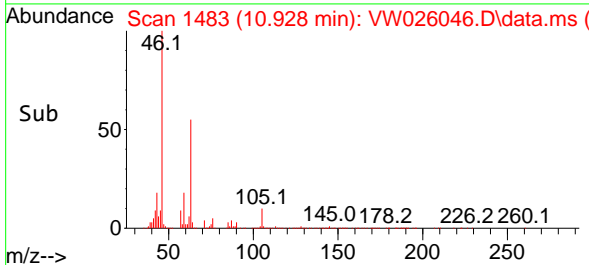
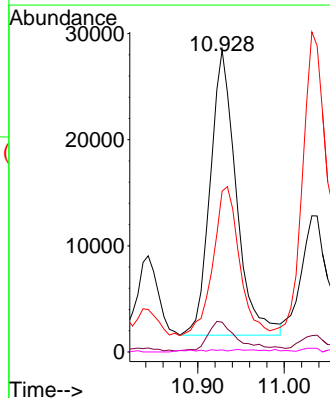
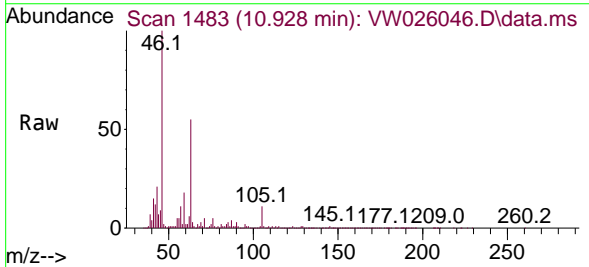
Ion	Ratio	Lower	Upper
97	100		
99	7.8	44.5	82.7#
83	17.3	63.0	117.0#
85	16.9	38.6	71.8#

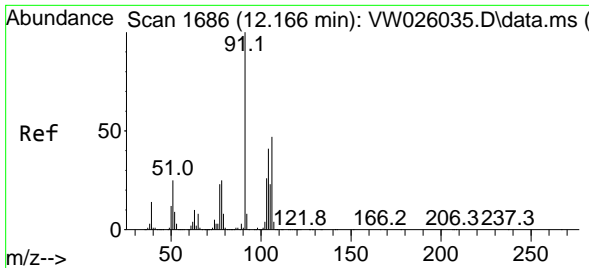


#48
 2-Hexanone
 Concen: 8.730 ug/L
 RT: 10.928 min Scan# 1483
 Delta R.T. -0.037 min
 Lab File: VW026046.D
 Acq: 25 May 2023 17:26

Tgt Ion: 43 Resp: 56094

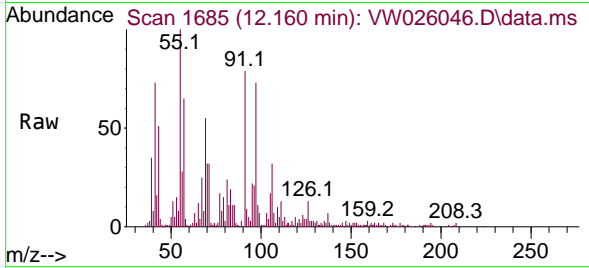
Ion	Ratio	Lower	Upper
43	100		
58	10.8	40.8	61.2#
57	53.2	13.6	20.4#
100	0.4	8.0	12.0#



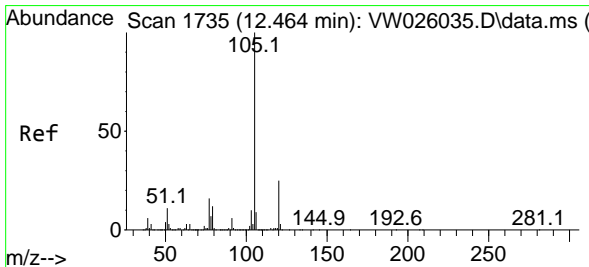
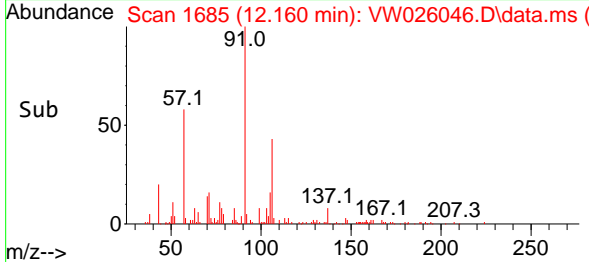
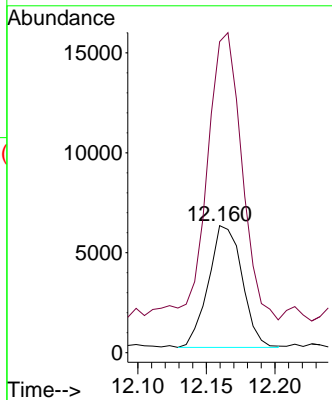


#54
 o-Xylene
 Concen: 0.520 ug/L
 RT: 12.160 min Scan# 11
 Delta R.T. -0.006 min
 Lab File: VW026046.D
 Acq: 25 May 2023 17:26

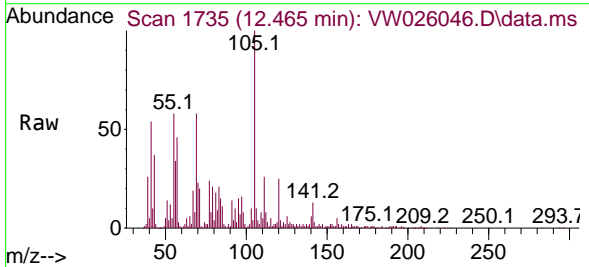
Instrument :
 MSVOA_W
 ClientSampleId :
 EW998



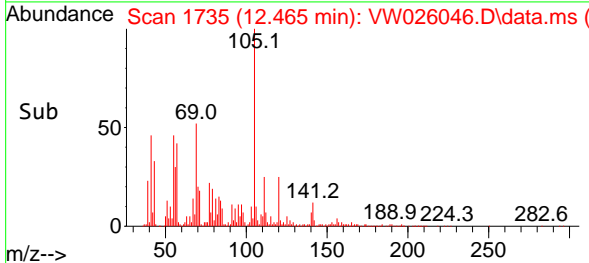
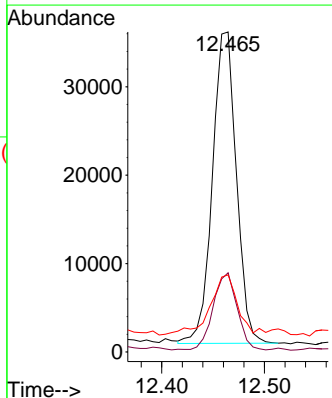
Tgt Ion:106 Resp: 10426
 Ion Ratio Lower Upper
 106 100
 91 245.0 157.8 293.1

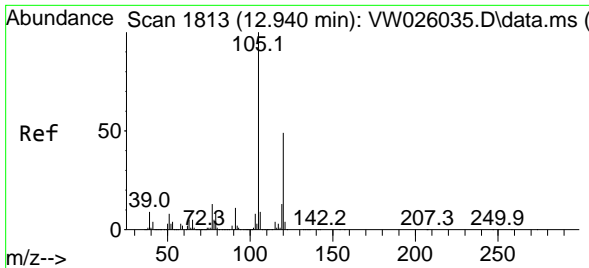


#60
 Isopropylbenzene
 Concen: 1.671 ug/L
 RT: 12.465 min Scan# 1735
 Delta R.T. 0.000 min
 Lab File: VW026046.D
 Acq: 25 May 2023 17:26



Tgt Ion:105 Resp: 57010
 Ion Ratio Lower Upper
 105 100
 120 24.7 21.1 31.7
 77 19.6 13.4 20.0

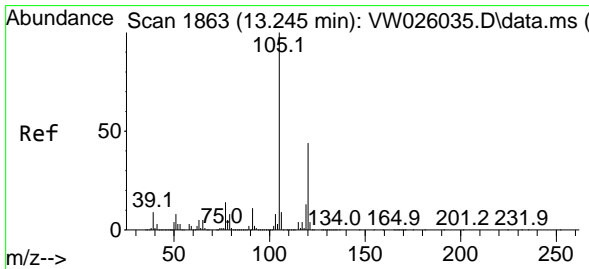
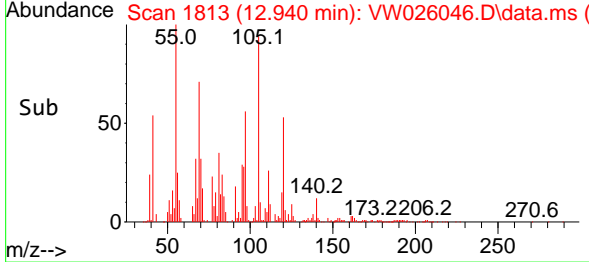
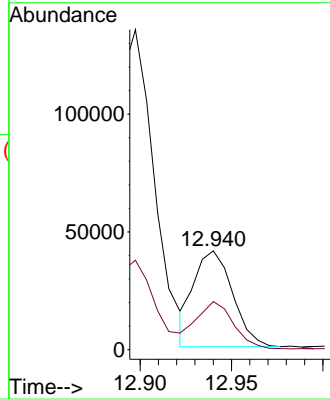
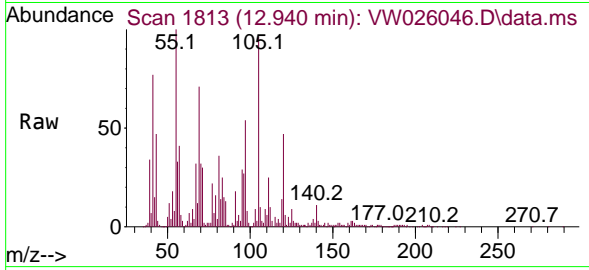




#62
 1,3,5-Trimethylbenzene
 Concen: 2.227 ug/L
 RT: 12.940 min Scan# 1813
 Delta R.T. 0.000 min
 Lab File: VW026046.D
 Acq: 25 May 2023 17:26

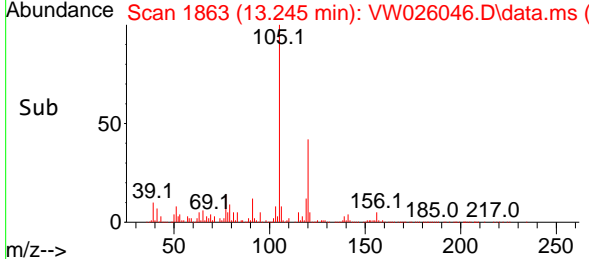
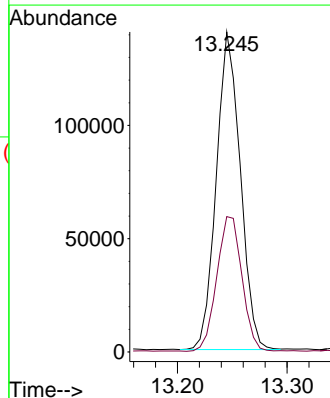
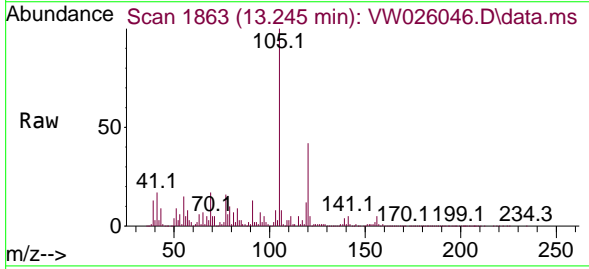
Instrument : MSVOA_W
 ClientSampleId : EW998

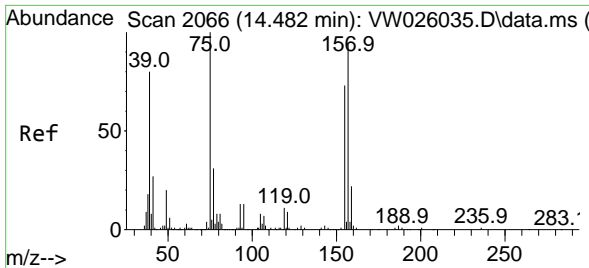
Tgt Ion:105 Resp: 60183
 Ion Ratio Lower Upper
 105 100
 120 47.2 37.1 55.7



#63
 1,2,4-Trimethylbenzene
 Concen: 8.553 ug/L
 RT: 13.245 min Scan# 1863
 Delta R.T. 0.000 min
 Lab File: VW026046.D
 Acq: 25 May 2023 17:26

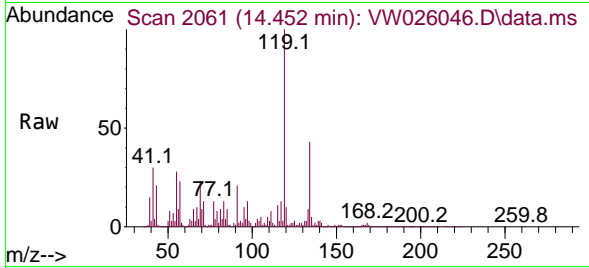
Tgt Ion:105 Resp: 213269
 Ion Ratio Lower Upper
 105 100
 120 44.5 34.7 52.1



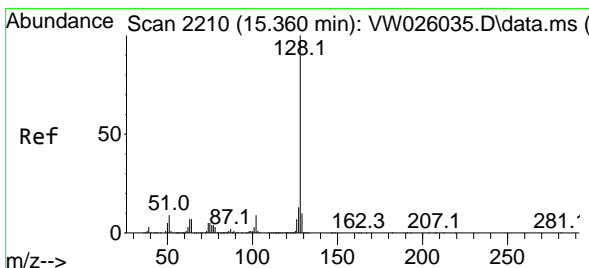
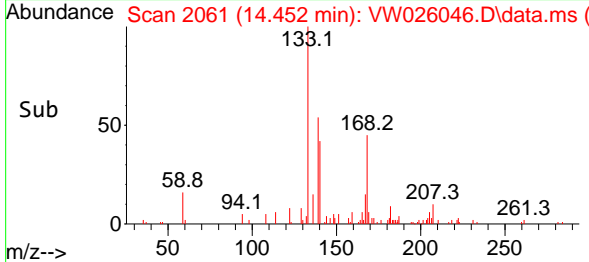
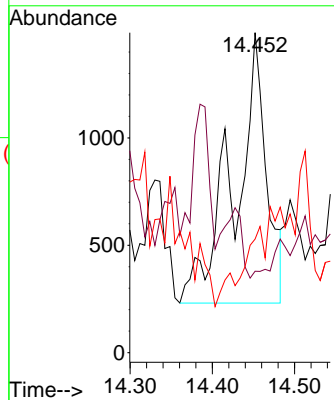


#68
 1,2-Dibromo-3-chloropropane
 Concen: 2.780 ug/L
 RT: 14.452 min Scan# 2061
 Delta R.T. -0.030 min
 Lab File: VW026046.D
 Acq: 25 May 2023 17:26

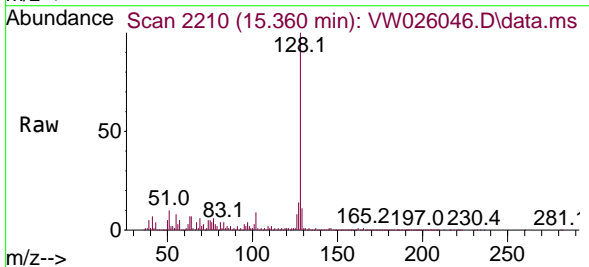
Instrument : MSVOA_W
 ClientSampleId : EW998



Tgt Ion: 75 Resp: 3419
 Ion Ratio Lower Upper
 75 100
 155 25.4 56.3 84.5#
 157 35.5 66.3 99.5#



#71
 Naphthalene
 Concen: 55.127 ug/L
 RT: 15.360 min Scan# 2210
 Delta R.T. 0.000 min
 Lab File: VW026046.D
 Acq: 25 May 2023 17:26



Tgt Ion: 128 Resp: 849755
 Ion Ratio Lower Upper
 128 100
 127 13.3 10.5 15.7
 129 11.0 8.5 12.7

