

Data Path : Z:\voasrv\HPCHEM1\MSVOA\_W\Data\VW052824\  
 Data File : VW028825.D  
 Acq On : 28 May 2024 12:43  
 Operator : SY/MD  
 Sample : P2590-01RE  
 Mi sc : 3.97g/10mL/MSVOA\_W/SOIL/B  
 ALS Vial : 7 Sample Multiplier: 1

Instrument :  
 MSVOA\_W  
 ClientSampleId :

Quant Time: May 29 00:56:39 2024  
 Quant Method : Z:\voasrv\HPCHEM1\MSVOA\_W\Method\SFAMWLM050224SMA.M  
 Quant Title : SFAM01.0  
 QLast Update : Wed May 29 00:53:59 2024  
 Response via : Initial Calibration

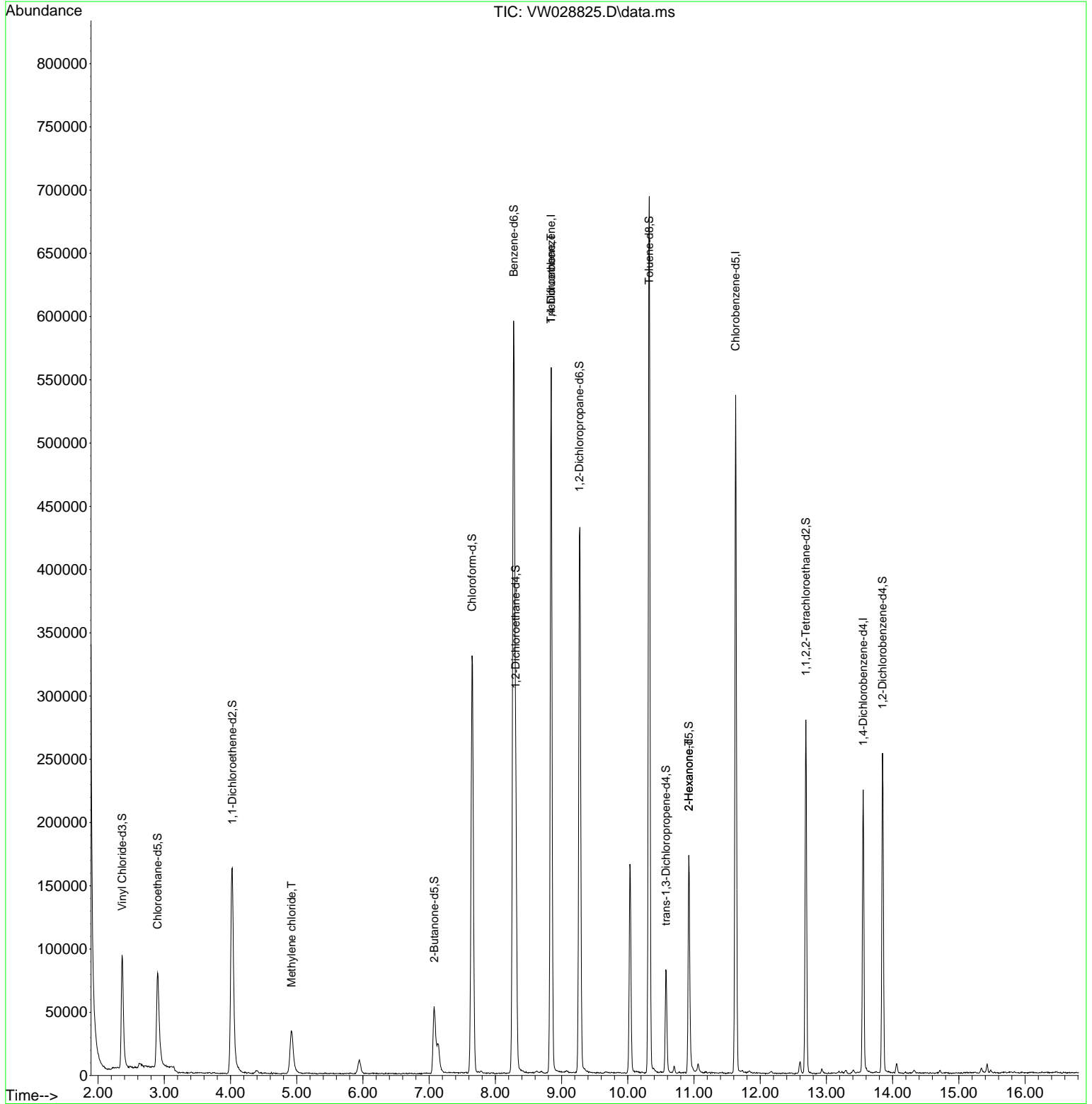
Compound	R.T.	QI on	Response	Conc	Units	Dev(Min)
<b>Internal Standards</b>						
1) 1,4-Difluorobenzene	8.843	114	430879	25.000	ug/L	0.00
28) Chlorobenzene-d5	11.629	117	277599	25.000	ug/L	0.00
58) 1,4-Dichlorobenzene-d4	13.555	152	55165	25.000	ug/L	0.00
<b>System Monitoring Compounds</b>						
4) Vinyl chloride-d3	2.362	65	128405	15.693	ug/L	0.00
Spike Amount	25.000	Range	30 - 150	Recovery	=	62.760%
7) Chloroethane-d5	2.899	69	122860	19.611	ug/L	0.00
Spike Amount	25.000	Range	30 - 150	Recovery	=	78.440%
11) 1,1-Dichloroethene-d2	4.027	65	59670	17.455	ug/L	0.00
Spike Amount	25.000	Range	45 - 110	Recovery	=	69.840%
21) 2-Butanone-d5	7.075	46	91374	42.805	ug/L	0.00
Spike Amount	50.000	Range	20 - 135	Recovery	=	85.600%
24) Chloroform-d	7.648	84	331519	24.623	ug/L	0.00
Spike Amount	25.000	Range	40 - 150	Recovery	=	98.480%
26) 1,2-Dichloroethane-d4	8.306	65	168834	21.904	ug/L	0.00
Spike Amount	25.000	Range	70 - 130	Recovery	=	87.600%
32) Benzene-d6	8.276	84	593369	32.037	ug/L	0.00
Spike Amount	25.000	Range	20 - 135	Recovery	=	128.160%
36) 1,2-Dichloropropane-d6	9.270	67	203351	36.487	ug/L	0.00
Spike Amount	25.000	Range	70 - 120	Recovery	=	145.960%#
41) Toluene-d8	10.324	98	442016	26.949	ug/L	0.00
Spike Amount	25.000	Range	30 - 130	Recovery	=	107.800%
43) trans-1,3-Dichloropropene	10.574	79	44683	19.930	ug/L	0.00
Spike Amount	25.000	Range	30 - 135	Recovery	=	79.720%
47) 2-Hexanone-d5	10.922	63	54340	56.531	ug/L	0.00
Spike Amount	50.000	Range	20 - 135	Recovery	=	113.060%
56) 1,1,2,2-Tetrachloroethene	12.690	84	136461	29.200	ug/L	0.00
Spike Amount	25.000	Range	45 - 120	Recovery	=	116.800%
66) 1,2-Dichlorobenzene-d4	13.848	152	60826	28.929	ug/L	0.00
Spike Amount	25.000	Range	75 - 120	Recovery	=	115.720%
<b>Target Compounds</b>						
16) Methylene chloride	4.923	84	28770	4.317	ug/L	90
34) Trichloroethene	8.843	95	13434	2.783	ug/L #	9
48) 2-Hexanone	10.922	43	9393	4.168	ug/L #	67

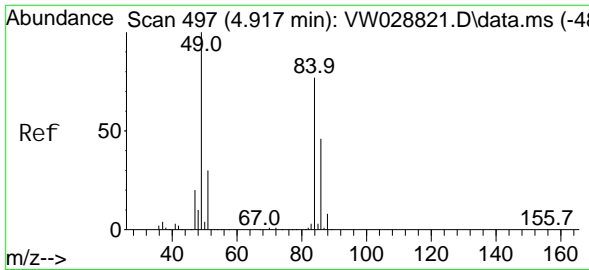
(#) = qualifier out of range (m) = manual integration (+) = signals summed

Data Path : Z:\voasrv\HPCHEM1\MSVOA\_W\Data\VW052824\  
 Data File : VW028825.D  
 Acq On : 28 May 2024 12:43  
 Operator : SY/MD  
 Sample : P2590-01RE  
 Misc : 3.97g/10mL/MSVOA\_W/SOIL/B  
 ALS Vial : 7 Sample Multiplier: 1

Instrument :  
 MSVOA\_W  
 ClientSampleId :

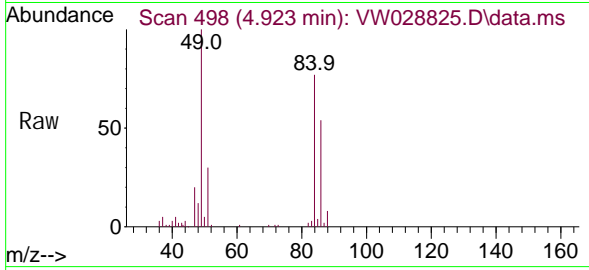
Quant Time: May 29 00:56:39 2024  
 Quant Method : Z:\voasrv\HPCHEM1\MSVOA\_W\Method\SFAMWLM050224SMA.M  
 Quant Title : SFAM01.0  
 QLast Update : Wed May 29 00:53:59 2024  
 Response via : Initial Calibration





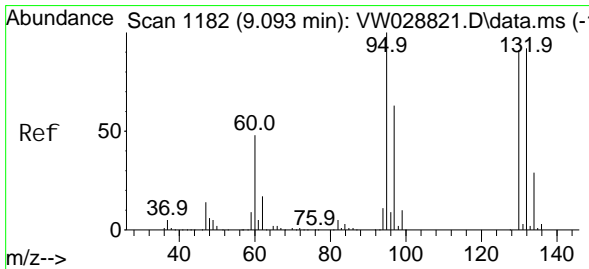
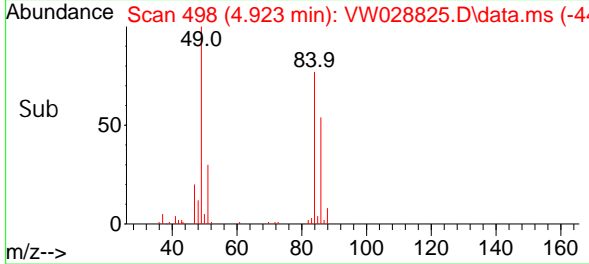
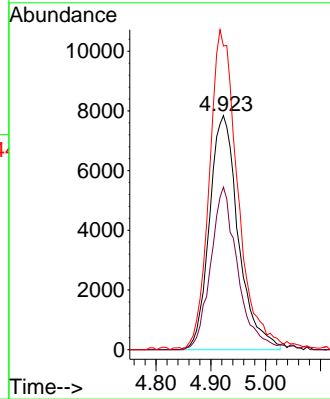
#16  
 Methylene chloride  
 Concen: 4.317 ug/L  
 RT: 4.923 min Scan# 498  
 Delta R.T. 0.006 min  
 Lab File: VW028825.D  
 Acq: 28 May 2024 12:43

Instrument : MSVOA\_W  
 ClientSampleId :



Tgt Ion: 84 Resp: 28770

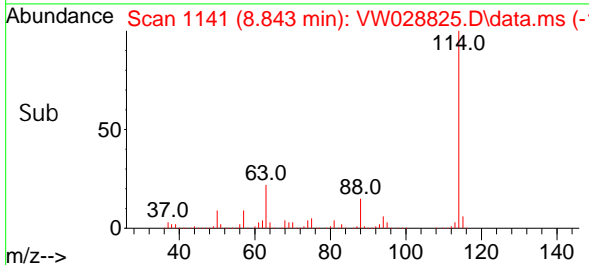
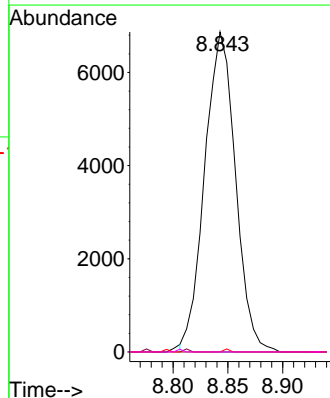
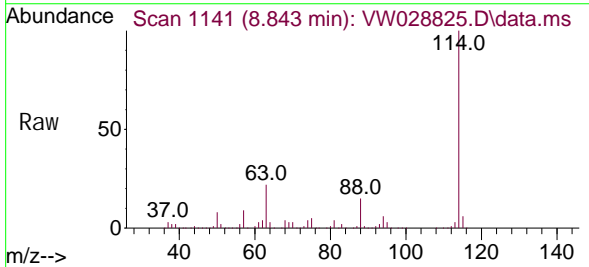
Ion	Ratio	Lower	Upper
84	100		
86	69.5	44.4	82.4
49	129.7	100.2	186.2

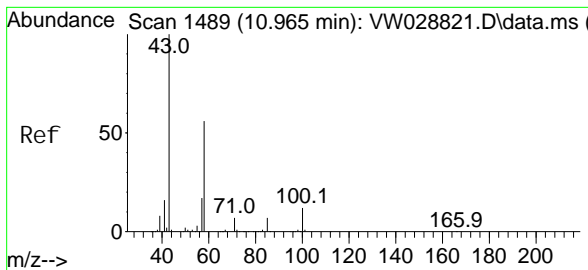


#34  
 Trichloroethene  
 Concen: 2.783 ug/L  
 RT: 8.843 min Scan# 1141  
 Delta R.T. -0.250 min  
 Lab File: VW028825.D  
 Acq: 28 May 2024 12:43

Tgt Ion: 95 Resp: 13434

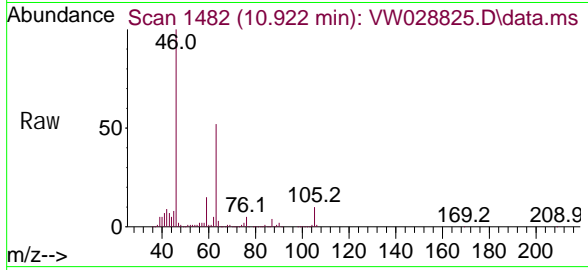
Ion	Ratio	Lower	Upper
95	100		
97	0.0	44.9	83.3#
132	0.0	59.7	110.9#
130	0.0	64.0	119.0#





#48  
 2-Hexanone  
 Concen: 4.168 ug/L  
 RT: 10.922 min Scan# 1482  
 Delta R.T. -0.043 min  
 Lab File: VW028825.D  
 Acq: 28 May 2024 12: 43

Instrument : MSVOA\_W  
 ClientSampleId :



Tgt Ion	Ratio	Lower	Upper
43	100		
58	23.9	41.0	61.4#
57	27.2	14.8	22.2#
100	1.5	8.6	12.8#

