

Data Path : Z:\voasrv\HPCHEM1\MSVOA\_W\Data\VW052824\  
 Data File : VW028831.D  
 Acq On : 28 May 2024 15:06  
 Operator : SY/MD  
 Sample : P2590-07RE  
 Mi sc : 4.95g/10mL/MSVOA\_W/SOIL/B  
 ALS Vial : 13 Sample Multiplier: 1

Instrument :  
 MSVOA\_W  
 ClientSampleId :

Quant Time: May 29 00:57:57 2024  
 Quant Method : Z:\voasrv\HPCHEM1\MSVOA\_W\Method\SFAMWLM050224SMA.M  
 Quant Title : SFAM01.0  
 QLast Update : Wed May 29 00:53:59 2024  
 Response via : Initial Calibration

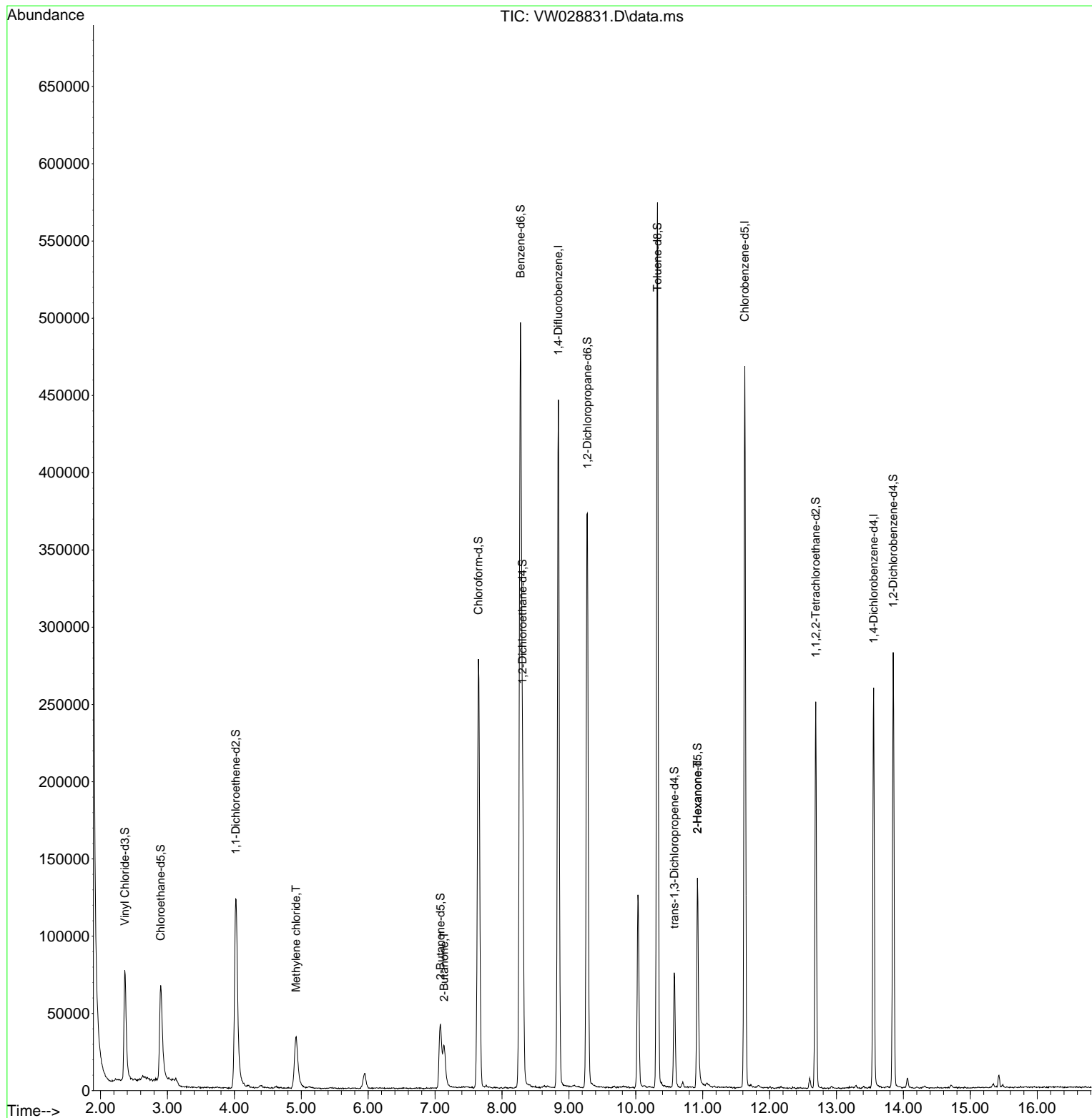
Compound	R. T.	QI on	Response	Conc	Units	Dev(Min)
Internal Standards						
1) 1,4-Difluorobenzene	8.843	114	349954	25.000	ug/L	0.00
28) Chlorobenzene-d5	11.629	117	245208	25.000	ug/L	0.00
58) 1,4-Dichlorobenzene-d4	13.556	152	63426	25.000	ug/L	0.00
System Monitoring Compounds						
4) Vinyl chloride-d3	2.363	65	109818	16.525	ug/L	0.00
Spike Amount	25.000	Range	30 - 150	Recovery	=	66.120%
7) Chloroethane-d5	2.899	69	102453	20.135	ug/L	0.00
Spike Amount	25.000	Range	30 - 150	Recovery	=	80.520%
11) 1,1-Dichloroethene-d2	4.021	65	48018	17.295	ug/L	0.00
Spike Amount	25.000	Range	45 - 110	Recovery	=	69.160%
21) 2-Butanone-d5	7.081	46	71474	41.225	ug/L	0.00
Spike Amount	50.000	Range	20 - 135	Recovery	=	82.460%
24) Chloroform-d	7.648	84	279001	25.515	ug/L	0.00
Spike Amount	25.000	Range	40 - 150	Recovery	=	102.040%
26) 1,2-Dichloroethane-d4	8.307	65	151305	24.169	ug/L	0.00
Spike Amount	25.000	Range	70 - 130	Recovery	=	96.680%
32) Benzene-d6	8.276	84	490809	30.001	ug/L	0.00
Spike Amount	25.000	Range	20 - 135	Recovery	=	120.000%
36) 1,2-Dichloropropane-d6	9.276	67	174054	35.356	ug/L	0.00
Spike Amount	25.000	Range	70 - 120	Recovery	=	141.440%#
41) Toluene-d8	10.325	98	366850	25.321	ug/L	0.00
Spike Amount	25.000	Range	30 - 130	Recovery	=	101.280%
43) trans-1,3-Dichloropropene	10.575	79	39836	20.115	ug/L	0.00
Spike Amount	25.000	Range	30 - 135	Recovery	=	80.440%
47) 2-Hexanone-d5	10.922	63	42462	50.010	ug/L	0.00
Spike Amount	50.000	Range	20 - 135	Recovery	=	100.020%
56) 1,1,2,2-Tetrachloroethene	12.690	84	120897	29.287	ug/L	0.00
Spike Amount	25.000	Range	45 - 120	Recovery	=	117.160%
66) 1,2-Dichlorobenzene-d4	13.848	152	69183	28.618	ug/L	0.00
Spike Amount	25.000	Range	75 - 120	Recovery	=	114.480%
Target Compounds						
16) Methylene chloride	4.923	84	28668	5.297	ug/L	94
22) 2-Butanone	7.136	43	6674	3.297	ug/L #	58
48) 2-Hexanone	10.922	43	8427	4.233	ug/L #	71

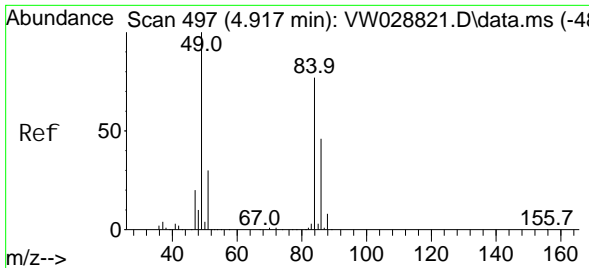
(#) = qualifier out of range (m) = manual integration (+) = signals summed

Data Path : Z:\voasrv\HPCHEM1\MSVOA\_W\Data\VW052824\  
 Data File : VW028831.D  
 Acq On : 28 May 2024 15:06  
 Operator : SY/MD  
 Sample : P2590-07RE  
 Misc : 4.95g/10mL/MSVOA\_W/SOIL/B  
 ALS Vial : 13 Sample Multiplier: 1

Instrument :  
 MSVOA\_W  
 ClientSampleId :

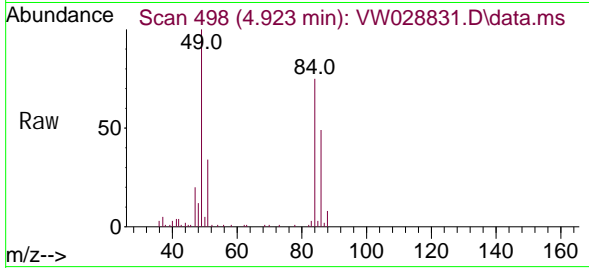
Quant Time: May 29 00:57:57 2024  
 Quant Method : Z:\voasrv\HPCHEM1\MSVOA\_W\Method\SFAMWLM050224SMA.M  
 Quant Title : SFAM01.0  
 QLast Update : Wed May 29 00:53:59 2024  
 Response via : Initial Calibration



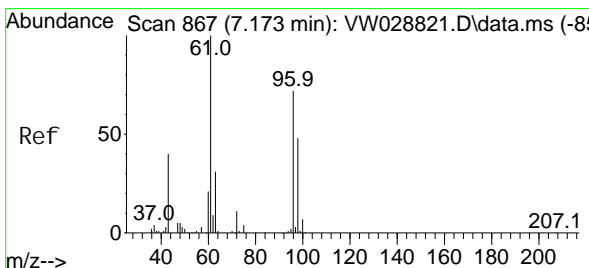
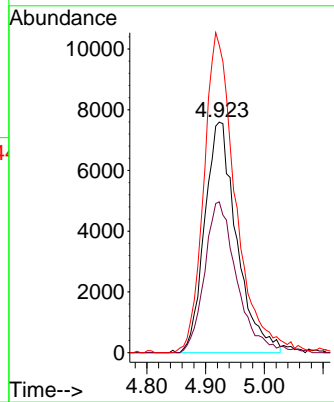
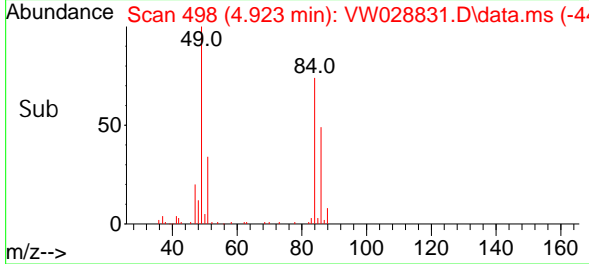


#16  
 Methylene chloride  
 Concen: 5.297 ug/L  
 RT: 4.923 min Scan# 498  
 Delta R.T. 0.006 min  
 Lab File: VW028831.D  
 Acq: 28 May 2024 15:06

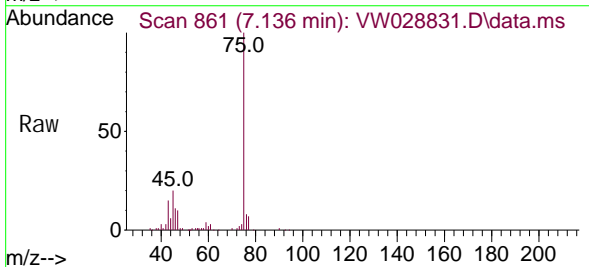
Instrument : MSVOA\_W  
 ClientSampleId :



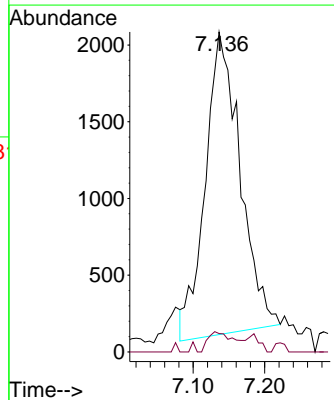
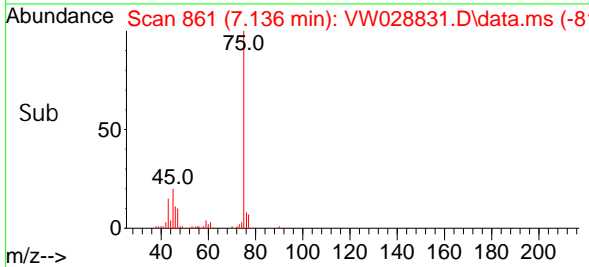
Tgt Ion: 84 Resp: 28668  
 Ion Ratio Lower Upper  
 84 100  
 86 65.5 44.4 82.4  
 49 133.4 100.2 186.2

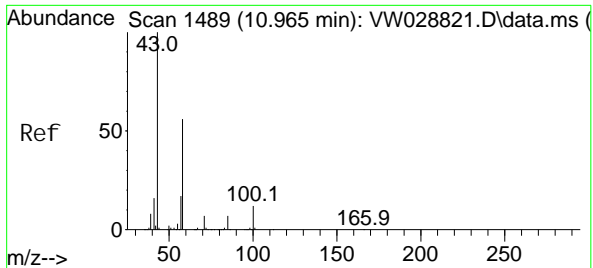


#22  
 2-Butanone  
 Concen: 3.297 ug/L  
 RT: 7.136 min Scan# 861  
 Delta R.T. -0.037 min  
 Lab File: VW028831.D  
 Acq: 28 May 2024 15:06



Tgt Ion: 43 Resp: 6674  
 Ion Ratio Lower Upper  
 43 100  
 72 3.5 12.2 36.6#





#48  
 2-Hexanone  
 Concen: 4.233 ug/L  
 RT: 10.922 min Scan# 14  
 Delta R.T. -0.043 min  
 Lab File: VW028831.D  
 Acq: 28 May 2024 15:06

Instrument : MSVOA\_W  
 ClientSampleId :

Tgt Ion	Ratio	Lower	Upper
43	100		
58	26.0	41.0	61.4#
57	24.5	14.8	22.2#
100	2.1	8.6	12.8#

