

Data Path : Z:\voasrv\HPCHEM1\MSVOA_W\Data\VW052824\
 Data File : VW028864.D
 Acq On : 29 May 2024 05:05
 Operator : SY/MD
 Sample : P2623-12
 Misc : 4.60g/10mL/MSVOA_W/SOIL/A
 ALS Vial : 48 Sample Multiplier: 1

Instrument :
 MSVOA_W
ClientSampleId :

Quant Time: May 29 05:52:40 2024
 Quant Method : Z:\voasrv\HPCHEM1\MSVOA_W\Method\SFAMWLM050224SMA.M
 Quant Title : SFAM01.0
 QLast Update : Wed May 29 02:08:39 2024
 Response via : Initial Calibration

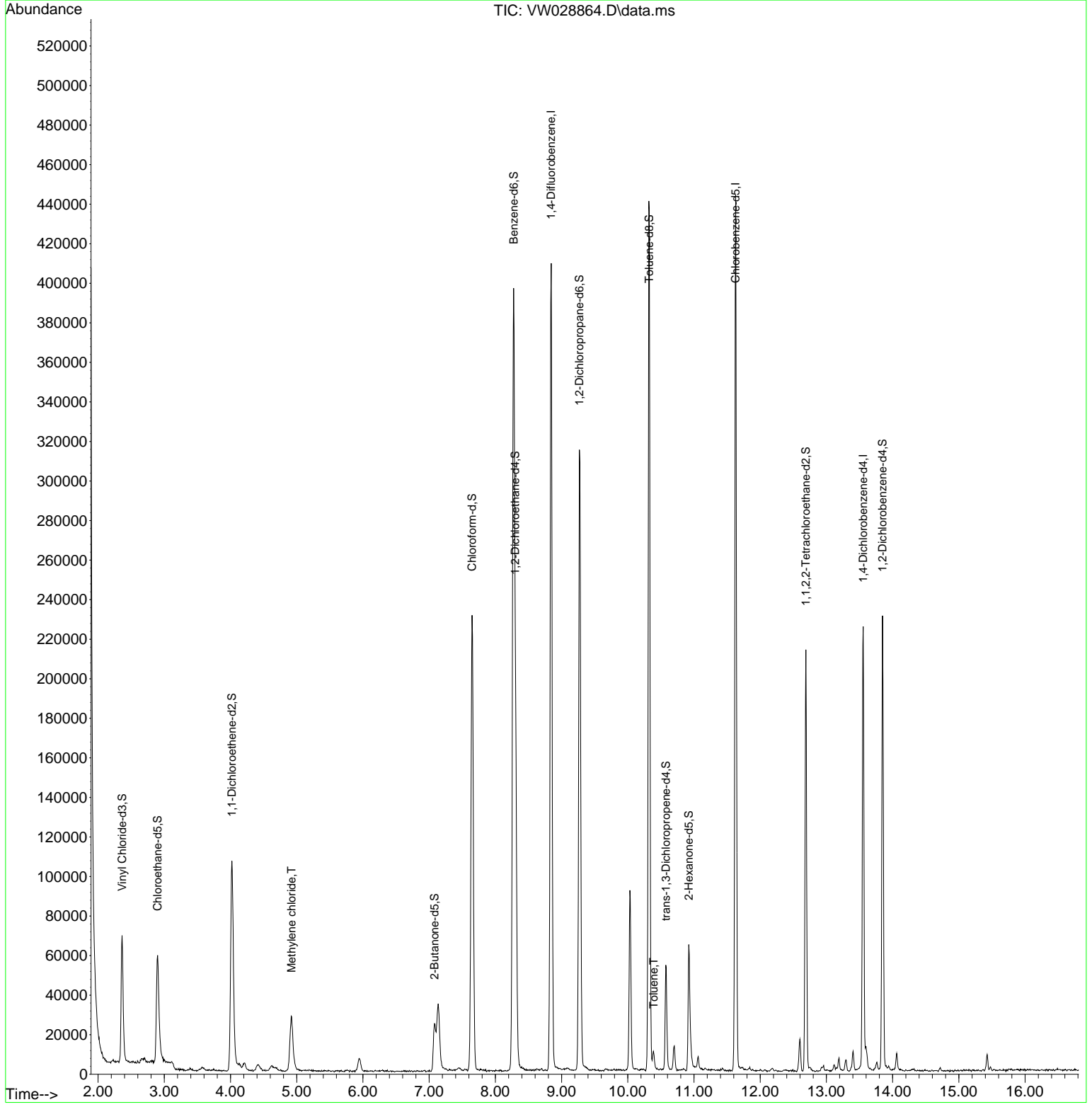
Compound	R.T.	QI on	Response	Conc	Units	Dev(Min)
Internal Standards						
1) 1,4-Difluorobenzene	8.843	114	332648	25.000	ug/L	0.00
28) Chlorobenzene-d5	11.629	117	237149	25.000	ug/L	0.00
58) 1,4-Dichlorobenzene-d4	13.556	152	56954	25.000	ug/L	0.00
System Monitoring Compounds						
4) Vinyl Chloride-d3	2.363	65	85961	13.608	ug/L	0.00
Spike Amount	25.000	Range	30 - 150	Recovery	=	54.440%
7) Chloroethane-d5	2.899	69	85051	17.584	ug/L	0.00
Spike Amount	25.000	Range	30 - 150	Recovery	=	70.320%
11) 1,1-Dichloroethane-d2	4.021	65	37272	14.123	ug/L	0.00
Spike Amount	25.000	Range	45 - 110	Recovery	=	56.480%
21) 2-Butanone-d5	7.081	46	39593	24.025	ug/L	0.00
Spike Amount	50.000	Range	20 - 135	Recovery	=	48.040%
24) Chloroform-d	7.648	84	233434	22.458	ug/L	0.00
Spike Amount	25.000	Range	40 - 150	Recovery	=	89.840%
26) 1,2-Dichloroethane-d4	8.301	65	124322	20.892	ug/L	0.00
Spike Amount	25.000	Range	70 - 130	Recovery	=	83.560%
32) Benzene-d6	8.276	84	395594	25.002	ug/L	0.00
Spike Amount	25.000	Range	20 - 135	Recovery	=	100.000%
36) 1,2-Dichloropropane-d6	9.270	67	145145	30.485	ug/L	0.00
Spike Amount	25.000	Range	70 - 120	Recovery	=	121.960%#
41) Toluene-d8	10.325	98	288462	20.587	ug/L	0.00
Spike Amount	25.000	Range	30 - 130	Recovery	=	82.360%
43) trans-1,3-Dichloroprop...	10.575	79	29169	15.229	ug/L	0.00
Spike Amount	25.000	Range	30 - 135	Recovery	=	60.920%
47) 2-Hexanone-d5	10.922	63	19399	23.624	ug/L	0.00
Spike Amount	50.000	Range	20 - 135	Recovery	=	47.240%
56) 1,1,2,2-Tetrachloroeth...	12.690	84	103748	25.986	ug/L	0.00
Spike Amount	25.000	Range	45 - 120	Recovery	=	103.960%
66) 1,2-Dichlorobenzene-d4	13.848	152	55918	25.760	ug/L	0.00
Spike Amount	25.000	Range	75 - 120	Recovery	=	103.040%
Target Compounds						
16) Methylene chloride	4.923	84	20677	4.019	ug/L	94
42) Toluene	10.392	91	5830	0.367	ug/L	93

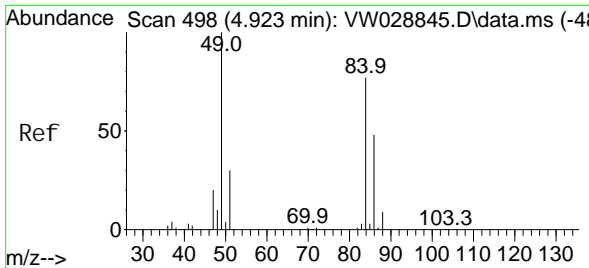
(#) = qualifier out of range (m) = manual integration (+) = signals summed

Data Path : Z:\voasrv\HPCHEM1\MSVOA_W\Data\VW052824\
 Data File : VW028864.D
 Acq On : 29 May 2024 05:05
 Operator : SY/MD
 Sample : P2623-12
 Misc : 4.60g/10mL/MSVOA_W/SOIL/A
 ALS Vial : 48 Sample Multiplier: 1

Instrument :
 MSVOA_W
 ClientSampleId :

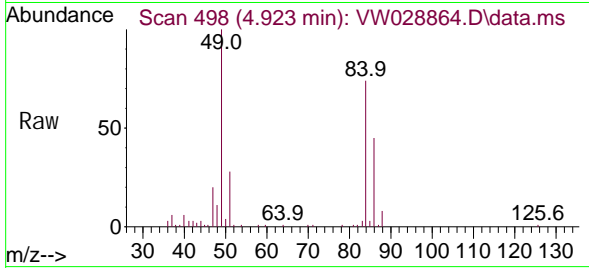
Quant Time: May 29 05:52:40 2024
 Quant Method : Z:\voasrv\HPCHEM1\MSVOA_W\Method\SFAMWLM050224SMA.M
 Quant Title : SFAM01.0
 QLast Update : Wed May 29 02:08:39 2024
 Response via : Initial Calibration



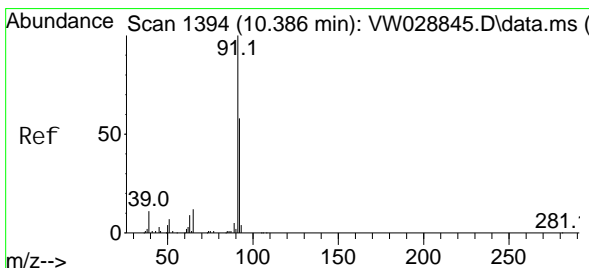
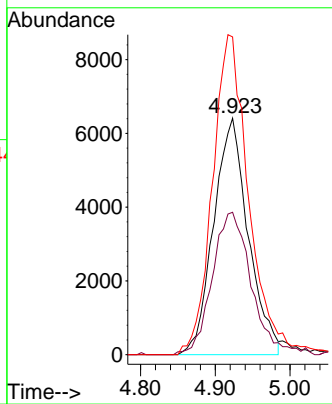
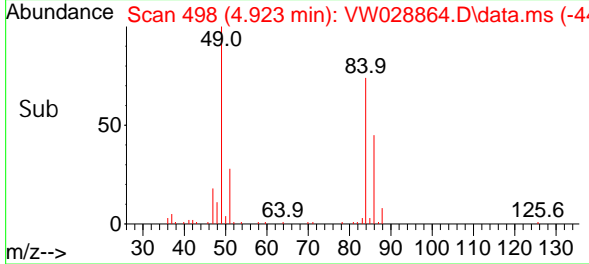


#16
 Methylene chloride
 Concen: 4.019 ug/L
 RT: 4.923 min Scan# 498
 Delta R.T. -0.000 min
 Lab File: VW028864.D
 Acq: 29 May 2024 05:05

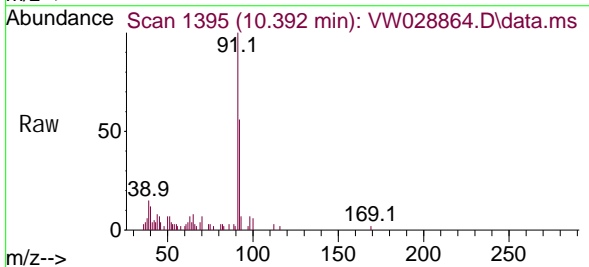
Instrument : MSVOA_W
 ClientSampleId :



Tgt Ion: 84 Resp: 20677
 Ion Ratio Lower Upper
 84 100
 86 60.2 44.4 82.4
 49 134.4 100.2 186.2



#42
 Toluene
 Concen: 0.367 ug/L
 RT: 10.392 min Scan# 1395
 Delta R.T. 0.006 min
 Lab File: VW028864.D
 Acq: 29 May 2024 05:05



Tgt Ion: 91 Resp: 5830
 Ion Ratio Lower Upper
 91 100
 92 55.7 42.5 78.9

