

Data Path : Z:\voasrv\HPCHEM1\MSVOA\_W\Data\VW052924\  
 Data File : VW028901.D  
 Acq On : 29 May 2024 23:27  
 Operator : SY/MD  
 Sample : P2647-10  
 Misc : 5.71g/10mL/MSVOA\_W/SOIL/A  
 ALS Vial : 37 Sample Multiplier: 1

Instrument :  
 MSVOA\_W  
 ClientSampleId :

Quant Time: May 30 01:35:00 2024  
 Quant Method : Z:\voasrv\HPCHEM1\MSVOA\_W\Method\SFAMWLM050224SMA.M  
 Quant Title : SFAM01.0  
 QLast Update : Wed May 29 23:53:47 2024  
 Response via : Initial Calibration

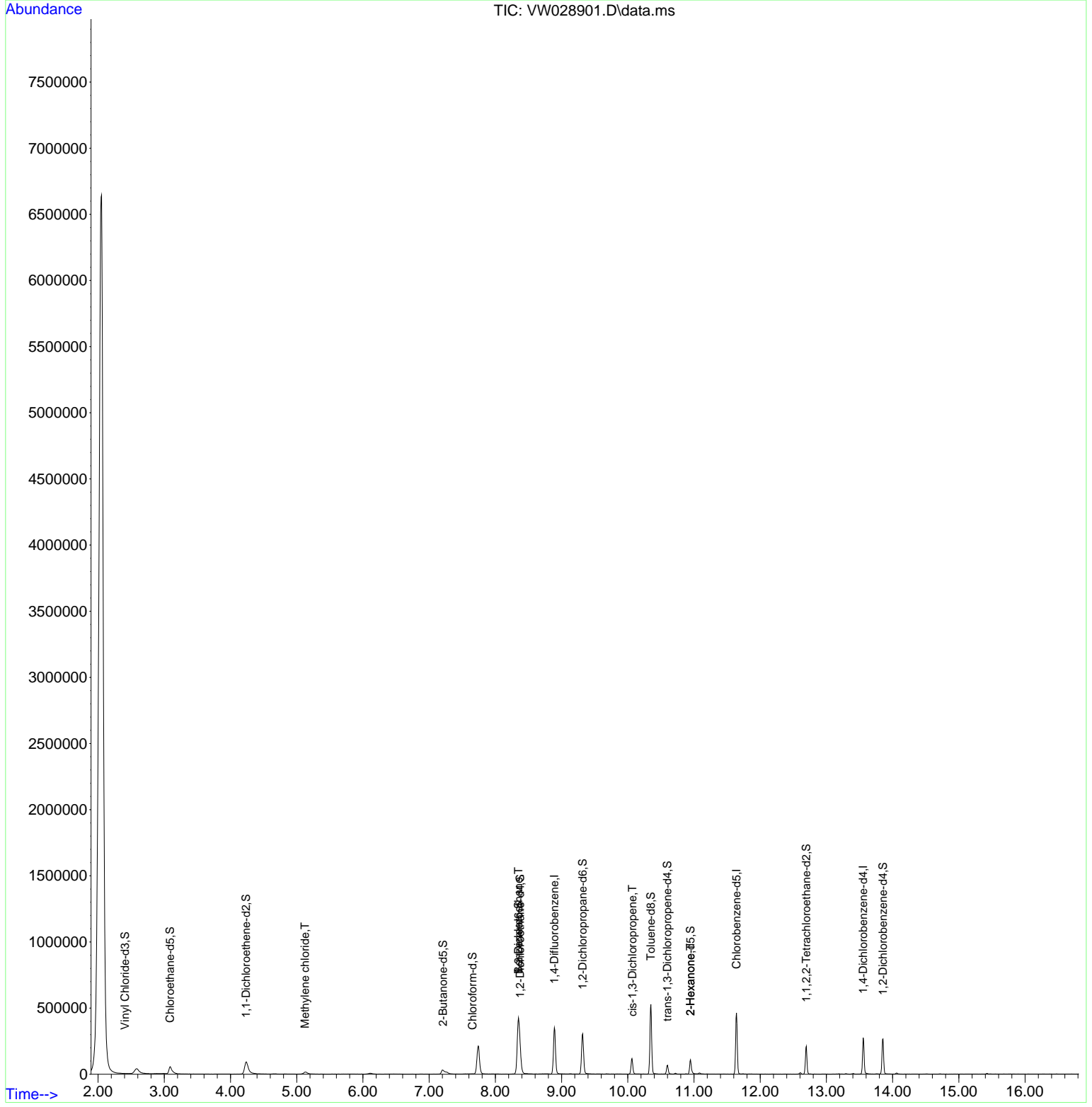
Compound	R.T.	QIon	Response	Conc	Units	Dev(Min)
Internal Standards						
1) 1,4-Difluorobenzene	8.892	114	299909	25.000	ug/L	0.05
28) Chlorobenzene-d5	11.642	117	247233	25.000	ug/L	0.01
58) 1,4-Dichlorobenzene-d4	13.556	152	68871	25.000	ug/L	0.00
System Monitoring Compounds						
4) Vinyl Chloride-d3	2.405	65	79	0.014	ug/L	0.04
Spiked Amount	25.000	Range 30 - 150	Recovery	=	0.0400#	
7) Chloroethane-d5	3.088	69	94246	21.613	ug/L	0.19
Spiked Amount	25.000	Range 30 - 150	Recovery	=	86.440%	
11) 1,1-Dichloroethene-d2	4.234	65	40741	17.122	ug/L	0.21
Spiked Amount	25.000	Range 45 - 110	Recovery	=	68.480%	
21) 2-Butanone-d5	7.209	46	55567	37.398	ug/L	0.13
Spiked Amount	50.000	Range 20 - 135	Recovery	=	74.800%	
24) Chloroform-d	7.654	84	36	0.004	ug/L	0.00
Spiked Amount	25.000	Range 40 - 150	Recovery	=	0.0000#	
26) 1,2-Dichloroethane-d4	8.374	65	127317	23.731	ug/L	0.07
Spiked Amount	25.000	Range 70 - 130	Recovery	=	94.920%	
32) Benzene-d6	8.349	84	447764	27.145	ug/L	0.07
Spiked Amount	25.000	Range 20 - 135	Recovery	=	108.600%	
36) 1,2-Dichloropropane-d6	9.319	67	147325	29.681	ug/L	0.05
Spiked Amount	25.000	Range 70 - 120	Recovery	=	118.720%	
41) Toluene-d8	10.349	98	345419	23.646	ug/L	0.02
Spiked Amount	25.000	Range 30 - 130	Recovery	=	94.600%	
43) trans-1,3-Dichloroprop...	10.599	79	36751	18.405	ug/L	0.02
Spiked Amount	25.000	Range 30 - 135	Recovery	=	73.640%	
47) 2-Hexanone-d5	10.947	63	33873	39.567	ug/L	0.02
Spiked Amount	50.000	Range 20 - 135	Recovery	=	79.140%	
56) 1,1,2,2-Tetrachloroeth...	12.696	84	103452	24.855	ug/L	0.00
Spiked Amount	25.000	Range 45 - 120	Recovery	=	99.440%	
66) 1,2-Dichlorobenzene-d4	13.855	152	70310	26.785	ug/L	0.00
Spiked Amount	25.000	Range 75 - 120	Recovery	=	107.160%	
Target Compounds						
16) Methylene chloride	5.124	84	14200	3.061	ug/L	86
27) 1,2-Dichloroethane	8.349	62	3089	0.516	ug/L #	93
39) cis-1,3-Dichloropropene	10.069	75	3170	0.529	ug/L #	77
48) 2-Hexanone	10.947	43	7300	3.637	ug/L #	71

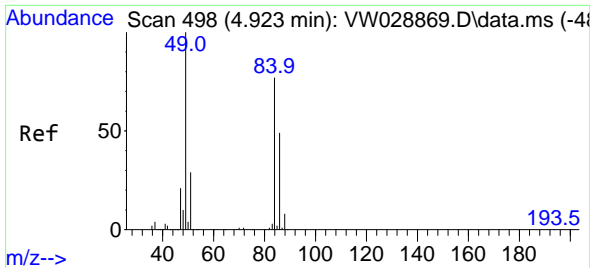
(#) = qualifier out of range (m) = manual integration (+) = signals summed

Data Path : Z:\voasrv\HPCHEM1\MSVOA\_W\Data\VW052924\  
 Data File : VW028901.D  
 Acq On : 29 May 2024 23:27  
 Operator : SY/MD  
 Sample : P2647-10  
 Misc : 5.71g/10mL/MSVOA\_W/SOIL/A  
 ALS Vial : 37 Sample Multiplier: 1

Instrument :  
 MSVOA\_W  
 ClientSampleId :

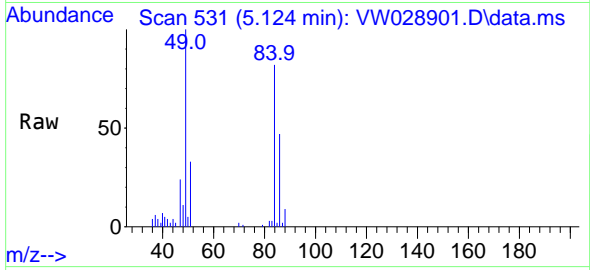
Quant Time: May 30 01:35:00 2024  
 Quant Method : Z:\voasrv\HPCHEM1\MSVOA\_W\Method\SFAMWLM050224SMA.M  
 Quant Title : SFAM01.0  
 QLast Update : Wed May 29 23:53:47 2024  
 Response via : Initial Calibration



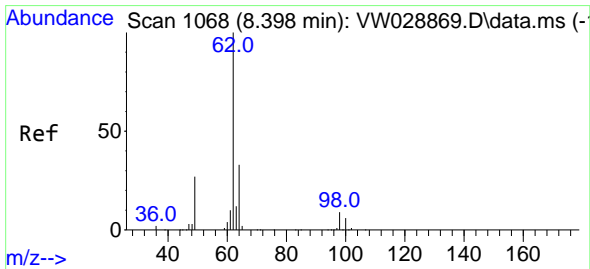
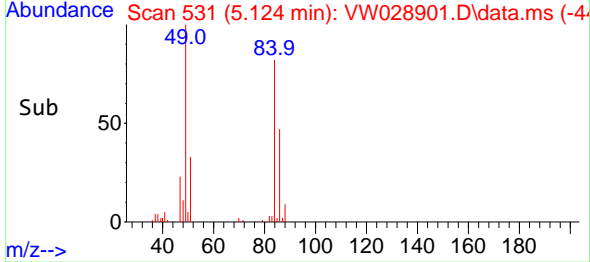
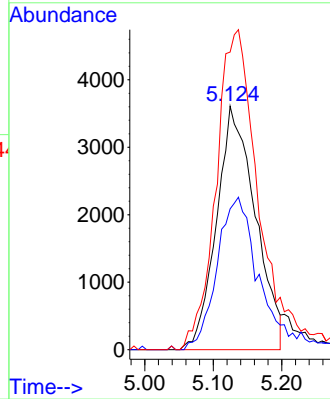


#16  
 Methylene chloride  
 Concen: 3.061 ug/L  
 RT: 5.124 min Scan# 51  
 Delta R.T. 0.201 min  
 Lab File: VW028901.D  
 Acq: 29 May 2024 23:27

Instrument :  
 MSVOA\_W  
 ClientSampleId :

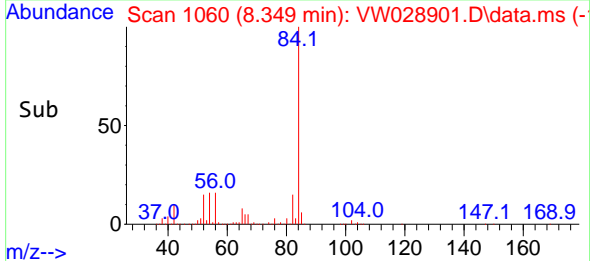
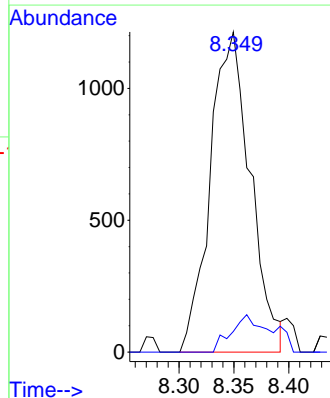
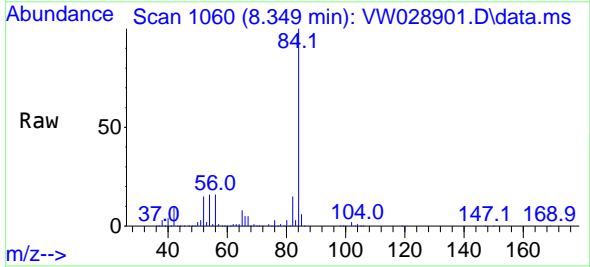


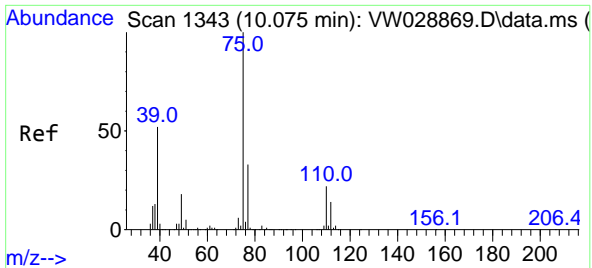
Tgt Ion: 84 Resp: 14200  
 Ion Ratio Lower Upper  
 84 100  
 86 57.8 44.4 82.4  
 49 122.2 100.2 186.2



#27  
 1,2-Dichloroethane  
 Concen: 0.516 ug/L  
 RT: 8.349 min Scan# 1060  
 Delta R.T. -0.049 min  
 Lab File: VW028901.D  
 Acq: 29 May 2024 23:27

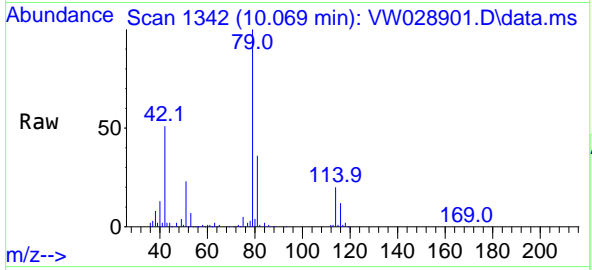
Tgt Ion: 62 Resp: 3089  
 Ion Ratio Lower Upper  
 62 100  
 98 6.4 7.0 10.6#



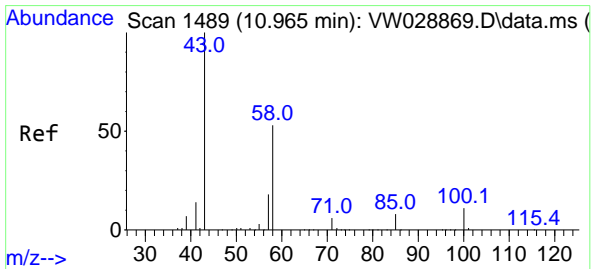
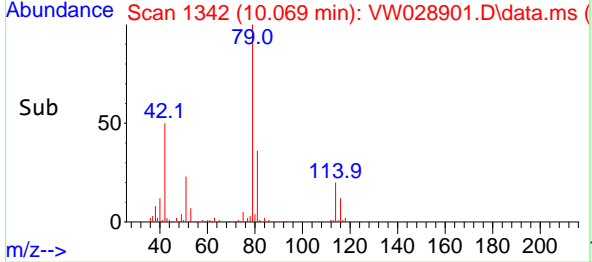
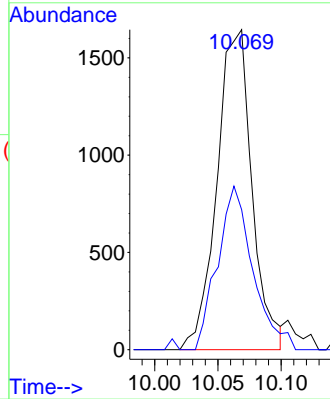


#39  
 cis-1,3-Dichloropropene  
 Concen: 0.529 ug/L  
 RT: 10.069 min Scan# 11  
 Delta R.T. -0.006 min  
 Lab File: VW028901.D  
 Acq: 29 May 2024 23:27

Instrument :  
 MSVOA\_W  
 ClientSampleId :



Tgt Ion: 75 Resp: 3170  
 Ion Ratio Lower Upper  
 75 100  
 77 43.8 21.8 40.6#



#48  
 2-Hexanone  
 Concen: 3.637 ug/L  
 RT: 10.947 min Scan# 1486  
 Delta R.T. -0.018 min  
 Lab File: VW028901.D  
 Acq: 29 May 2024 23:27

Tgt Ion: 43 Resp: 7300  
 Ion Ratio Lower Upper  
 43 100  
 58 27.1 41.0 61.4#  
 57 25.5 14.8 22.2#  
 100 1.6 8.6 12.8#

