

Data Path : Z:\voasrv\HPCHEM1\MSVOA_W\Data\VW052924\
 Data File : VW028901.D
 Acq On : 29 May 2024 23:27
 Operator : SY/MD
 Sample : P2647-10
 Misc : 5.71g/10mL/MSVOA_W/SOIL/A
 ALS Vial : 37 Sample Multiplier: 1

Instrument :
 MSVOA_W
 ClientSampleId :
 BHBS4

Integration Parameters: LSCINT.P

Integrator: RTE
 Smoothing : OFF
 Sampling : 1
 Start Thrs : 0.2
 Stop Thrs : 0

Filtering: 5
 Min Area: 0 % of largest Peak
 Max Peaks: 100
 Peak Location: TOP

If leading or trailing edge < 100 prefer < Baseline drop else tangent >
 Peak separation: 5

Method : Z:\voasrv\HPCHEM1\MSVOA_W\Method\SFAMWLM050224SMA.M
 Title : SFAM01.0

Signal : TIC: VW028901.D\data.ms

peak #	R.T. min	first scan	max scan	last scan	PK TY	peak height	corr. area	corr. % max.	% of total
1	2.052	3	27	67	rVB	6637503	31689971	100.00%	79.887%
2	2.582	103	114	133	rVB	35441	160111	0.51%	0.404%
3	3.088	189	197	217	rVB	53657	178554	0.56%	0.450%
4	3.442	253	255	258	rVV4	772	525	0.00%	0.001%
5	3.619	282	284	287	rBV2	458	569	0.00%	0.001%
6	3.710	297	299	302	rVB4	641	712	0.00%	0.002%
7	4.100	360	363	365	rBV4	803	957	0.00%	0.002%
8	4.125	365	367	369	rVB3	603	550	0.00%	0.001%
9	4.155	369	372	373	rBV3	1104	1088	0.00%	0.003%
10	4.240	373	386	409	rBV2	91489	383138	1.21%	0.966%
11	4.557	437	438	441	rBV3	605	628	0.00%	0.002%
12	4.649	447	453	454	rBV5	1677	2522	0.01%	0.006%
13	4.759	469	471	474	rBV3	622	648	0.00%	0.002%
14	4.807	474	479	480	rBV4	922	1447	0.00%	0.004%
15	5.009	508	512	513	rVB3	484	523	0.00%	0.001%
16	5.051	513	519	520	rBV5	750	1244	0.00%	0.003%
17	5.131	520	532	543	rBV3	14893	60714	0.19%	0.153%
18	5.301	558	560	565	rVB5	633	1057	0.00%	0.003%
19	5.368	567	571	574	rVV4	628	1049	0.00%	0.003%
20	5.576	602	605	610	rBV7	736	1009	0.00%	0.003%
21	5.618	610	612	614	rBV3	512	526	0.00%	0.001%
22	5.679	618	622	623	rBV4	533	601	0.00%	0.002%
23	5.911	656	660	664	rBV5	734	1084	0.00%	0.003%
24	5.972	667	670	671	rBV3	656	766	0.00%	0.002%
25	6.021	674	678	680	rBV2	354	569	0.00%	0.001%
26	6.106	680	692	713	rVB5	6224	26923	0.08%	0.068%
27	6.325	724	728	731	rBV5	603	730	0.00%	0.002%
28	6.466	748	751	752	rBV3	857	604	0.00%	0.002%
29	6.703	788	790	792	rVV2	532	590	0.00%	0.001%
30	6.758	796	799	802	rVB5	517	676	0.00%	0.002%
31	6.874	813	818	821	rVV5	613	1394	0.00%	0.004%
32	6.899	821	822	825	rVV2	863	763	0.00%	0.002%
33	7.063	848	849	853	rBV2	620	770	0.00%	0.002%
34	7.118	855	858	859	rBV2	625	646	0.00%	0.002%
35	7.203	864	872	899	rBV3	30150	144649	0.46%	0.365%
36	7.740	950	960	974	rVB	211055	573216	1.81%	1.445%

Data Path : Z:\voasrv\HPCHEM1\MSVOA_W\Data\VW052924\
 Data File : VW028901.D
 Acq On : 29 May 2024 23:27
 Operator : SY/MD
 Sample : P2647-10
 Misc : 5.71g/10mL/MSVOA_W/SOIL/A
 ALS Vial : 37 Sample Multiplier: 1

Instrument :
 MSVOA_W
 ClientSampleId :
 BHBS4

Integration Parameters: LSCINT.P

Integrator: RTE
 Smoothing : OFF
 Sampling : 1
 Start Thrs : 0.2
 Stop Thrs : 0

Filtering: 5
 Min Area: 0 % of largest Peak
 Max Peaks: 100
 Peak Location: TOP

If leading or trailing edge < 100 prefer < Baseline drop else tangent >
 Peak separation: 5

Method : Z:\voasrv\HPCHEM1\MSVOA_W\Method\SFAMWLM050224SMA.M
 Title : SFAM01.0

37	7.941	991	993	996	rBV4	560	563	0.00%	0.001%
38	8.112	1018	1021	1024	rBV4	573	641	0.00%	0.002%
39	8.349	1049	1060	1079	rVV2	423372	1307158	4.12%	3.295%
40	8.660	1109	1111	1113	rBV3	1041	1168	0.00%	0.003%
41	8.709	1118	1119	1123	rVV4	899	1182	0.00%	0.003%
42	8.892	1140	1149	1163	rBV	349764	752983	2.38%	1.898%
43	9.118	1182	1186	1187	rBV4	1690	1599	0.01%	0.004%
44	9.319	1209	1219	1236	rBV	303588	667160	2.11%	1.682%
45	9.526	1251	1253	1255	rBV3	686	590	0.00%	0.001%
46	9.685	1273	1279	1280	rBV6	1574	2663	0.01%	0.007%
47	10.063	1333	1341	1350	rBV	116555	220790	0.70%	0.557%
48	10.197	1361	1363	1366	rVB4	663	513	0.00%	0.001%
49	10.233	1368	1369	1376	rBV6	758	1226	0.00%	0.003%
50	10.349	1379	1388	1396	rBV	527300	959489	3.03%	2.419%
51	10.508	1413	1414	1416	rVV2	1157	734	0.00%	0.002%
52	10.599	1422	1429	1442	rVV2	67298	122717	0.39%	0.309%
53	10.721	1444	1449	1456	rVB2	5827	10268	0.03%	0.026%
54	10.880	1471	1475	1479	rBV6	2397	3975	0.01%	0.010%
55	10.947	1479	1486	1501	rVV	108198	211247	0.67%	0.533%
56	11.081	1504	1508	1524	rVV2	8014	19092	0.06%	0.048%
57	11.197	1524	1527	1530	rVB4	915	1240	0.00%	0.003%
58	11.355	1549	1553	1554	rBV4	765	851	0.00%	0.002%
59	11.642	1591	1600	1612	rBV	463033	790377	2.49%	1.992%
60	11.831	1629	1631	1634	rBV4	1082	1236	0.00%	0.003%
61	11.861	1634	1636	1638	rVV3	1060	974	0.00%	0.002%
62	12.001	1655	1659	1661	rBV4	499	639	0.00%	0.002%
63	12.074	1669	1671	1675	rVB3	888	1052	0.00%	0.003%
64	12.111	1675	1677	1681	rVB3	794	986	0.00%	0.002%
65	12.148	1681	1683	1684	rBV2	769	570	0.00%	0.001%
66	12.178	1684	1688	1691	rBV5	780	1356	0.00%	0.003%
67	12.300	1705	1708	1710	rBV3	833	869	0.00%	0.002%
68	12.562	1749	1751	1753	rBV3	626	590	0.00%	0.001%
69	12.611	1753	1759	1765	rVB2	10062	17692	0.06%	0.045%
70	12.696	1765	1773	1781	rBV	209966	348418	1.10%	0.878%
71	12.818	1790	1793	1797	rBV5	495	959	0.00%	0.002%
72	12.952	1809	1815	1817	rBV6	1066	2064	0.01%	0.005%
73	13.013	1823	1825	1827	rBV2	764	723	0.00%	0.002%
74	13.056	1830	1832	1834	rVB2	735	612	0.00%	0.002%
75	13.080	1834	1836	1837	rBV2	1100	829	0.00%	0.002%
76	13.160	1846	1849	1850	rVV3	865	858	0.00%	0.002%

Data Path : Z:\voasrv\HPCHEM1\MSVOA_W\Data\VW052924\
 Data File : VW028901.D
 Acq On : 29 May 2024 23:27
 Operator : SY/MD
 Sample : P2647-10
 Misc : 5.71g/10mL/MSVOA_W/SOIL/A
 ALS Vial : 37 Sample Multiplier: 1

Instrument :
 MSVOA_W
 ClientSampleId :
 BHBS4

Integration Parameters: LSCINT.P

Integrator: RTE
 Smoothing : OFF Filtering: 5
 Sampling : 1 Min Area: 0 % of largest Peak
 Start Thrs: 0.2 Max Peaks: 100
 Stop Thrs : 0 Peak Location: TOP

If leading or trailing edge < 100 prefer < Baseline drop else tangent >
 Peak separation: 5

Method : Z:\voasrv\HPCHEM1\MSVOA_W\Method\SFAMWLM050224SMA.M
 Title : SFAM01.0

77	13.190	1850	1854	1860	rVV4	1971	3347	0.01%	0.008%
78	13.288	1866	1870	1880	rVB4	3545	6426	0.02%	0.016%
79	13.403	1881	1889	1894	rBV6	4511	8830	0.03%	0.022%
80	13.556	1907	1914	1927	rBV	274950	451198	1.42%	1.137%
81	13.757	1943	1947	1952	rBV6	1531	2484	0.01%	0.006%
82	13.855	1954	1963	1975	rBV	264882	456704	1.44%	1.151%
83	14.062	1991	1997	2004	rVB2	8089	14674	0.05%	0.037%
84	14.184	2013	2017	2020	rBV4	708	1037	0.00%	0.003%
85	14.226	2020	2024	2026	rVB5	750	945	0.00%	0.002%
86	14.281	2031	2033	2036	rBV3	887	950	0.00%	0.002%
87	14.513	2066	2071	2072	rBV4	1005	1521	0.00%	0.004%
88	14.629	2089	2090	2093	rVV2	621	539	0.00%	0.001%
89	14.720	2099	2105	2110	rVB7	1754	3240	0.01%	0.008%
90	14.867	2125	2129	2131	rBV3	833	867	0.00%	0.002%
91	15.025	2152	2155	2156	rBV3	662	789	0.00%	0.002%
92	15.104	2164	2168	2170	rBV2	847	1197	0.00%	0.003%
93	15.251	2189	2192	2194	rVV4	722	801	0.00%	0.002%
94	15.275	2194	2196	2199	rVB4	596	566	0.00%	0.001%
95	15.427	2217	2221	2226	rVV3	4181	7132	0.02%	0.018%
96	15.684	2258	2263	2268	rBV9	1140	2510	0.01%	0.006%
97	16.049	2321	2323	2325	rVV3	616	664	0.00%	0.002%
98	16.214	2346	2350	2355	rBV8	447	869	0.00%	0.002%
99	16.720	2431	2433	2436	rBV4	545	532	0.00%	0.001%
100	16.769	2439	2441	2443	rBV3	636	582	0.00%	0.001%

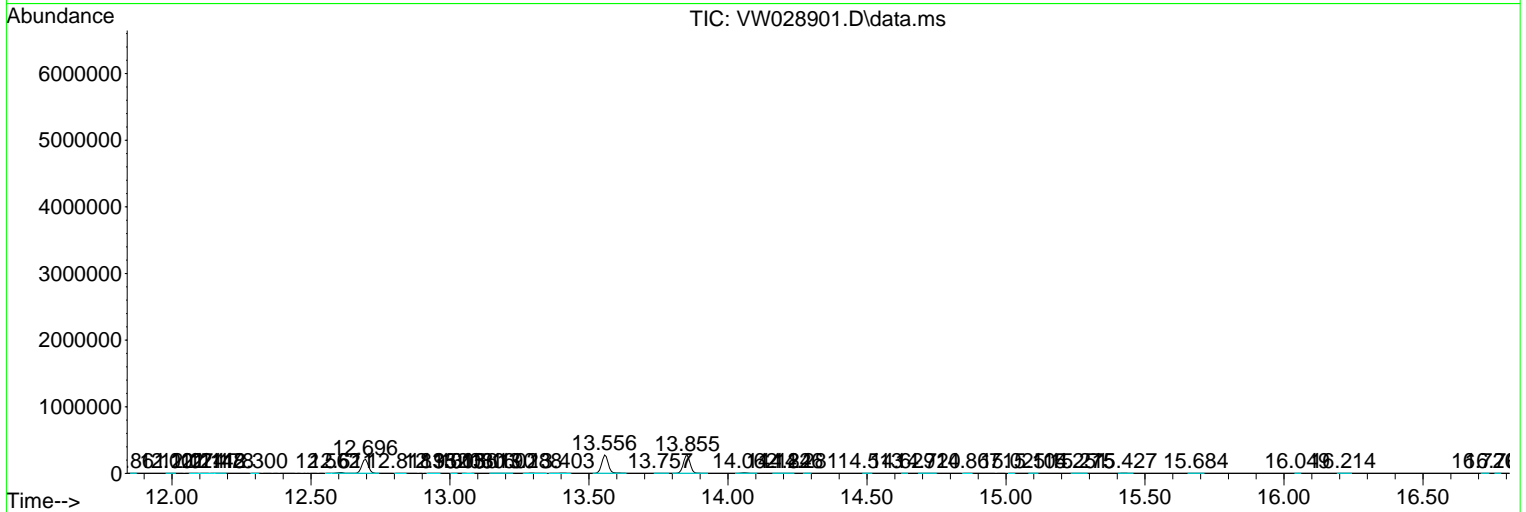
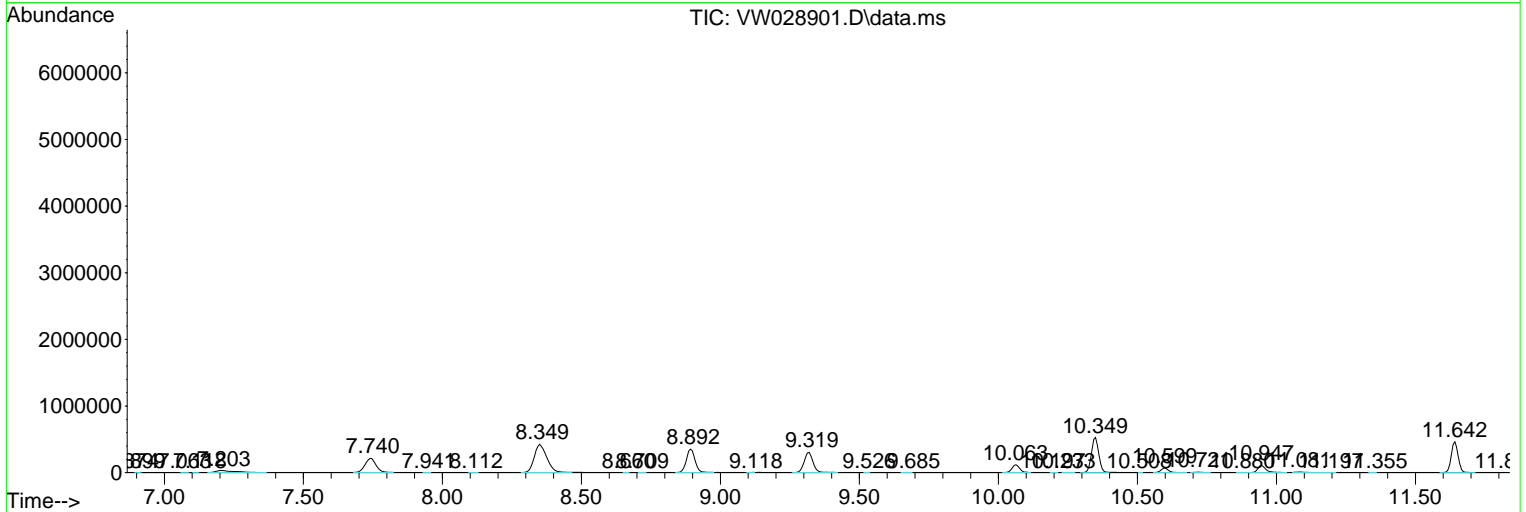
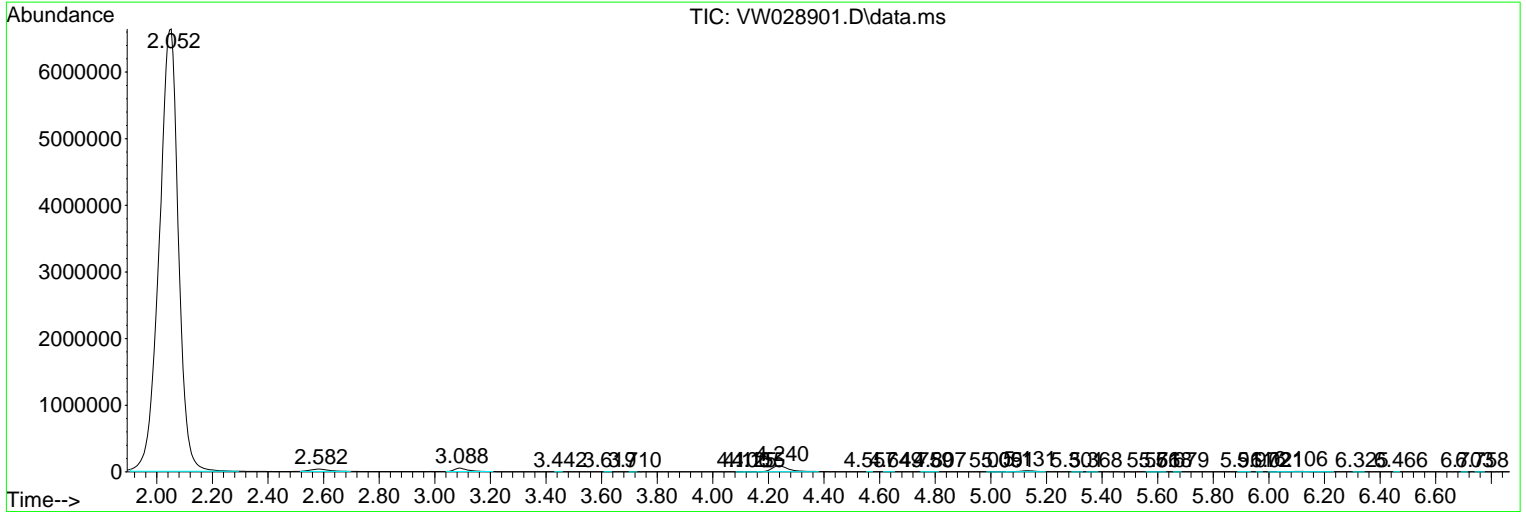
Sum of corrected areas: 39668580

Data Path : Z:\voasrv\HPCHEM1\MSVOA_W\Data\VW052924\
 Data File : VW028901.D
 Acq On : 29 May 2024 23:27
 Operator : SY/MD
 Sample : P2647-10
 Misc : 5.71g/10mL/MSVOA_W/SOIL/A
 ALS Vial : 37 Sample Multiplier: 1

Instrument :
 MSVOA_W
ClientSampleId :
 BHBS4

Quant Method : Z:\voasrv\HPCHEM1\MSVOA_W\Method\SFAMWLM050224SMA.M
 Quant Title : SFAM01.0

TIC Library : C:\Database\NIST20.L
 TIC Integration Parameters: LSCINT.P



Data Path : Z:\voasrv\HPCHEM1\MSVOA_W\Data\VW052924\
 Data File : VW028901.D
 Acq On : 29 May 2024 23:27
 Operator : SY/MD
 Sample : P2647-10
 Misc : 5.71g/10mL/MSVOA_W/SOIL/A
 ALS Vial : 37 Sample Multiplier: 1

Instrument :
 MSVOA_W
 ClientSampleId :
 BHBS4

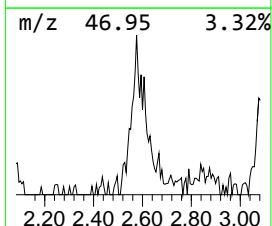
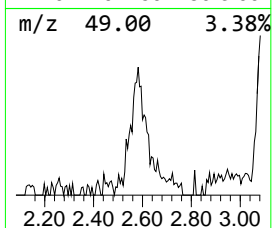
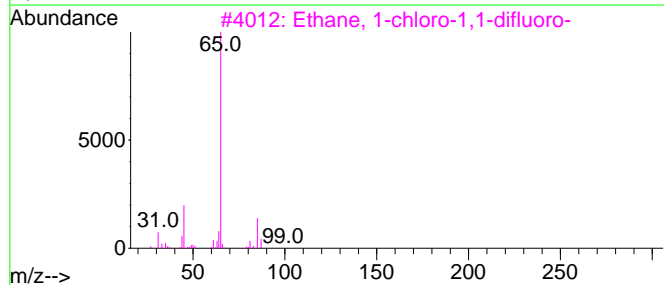
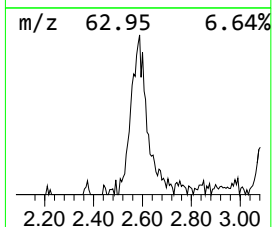
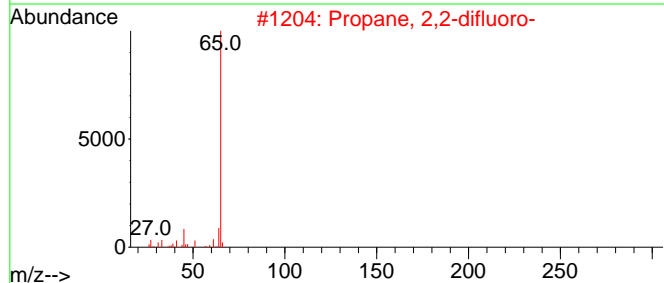
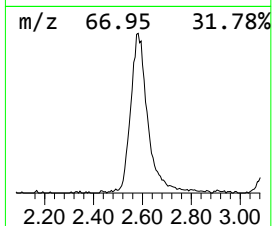
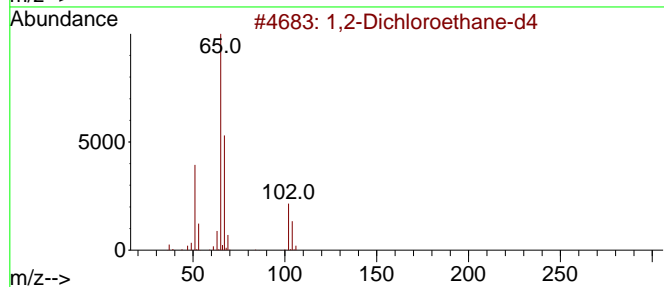
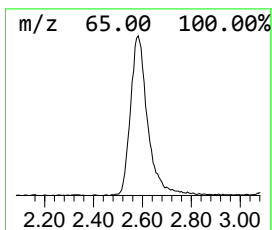
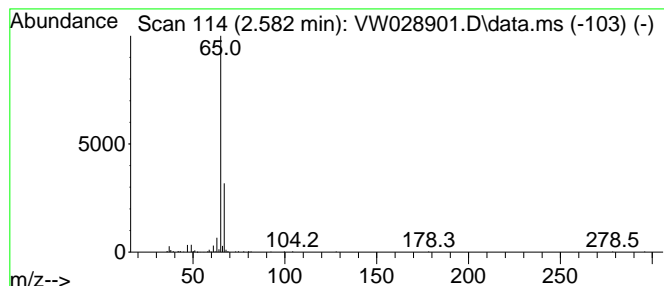
Quant Method : Z:\voasrv\HPCHEM1\MSVOA_W\Method\SFAMWLM050224SMA.M
 Quant Title : SFAM01.0

TIC Library : C:\Database\NIST20.L
 TIC Integration Parameters: LSCINT.P

 Peak Number 2 unknown-01 Concentration Rank 3

R.T.	EstConc	Area	Relative to ISTD	R.T.
2.582	5.32 ug/L	160111	1,4-Difluorobenzene	8.892

Hit#	of	5	Tentative ID	MW	MolForm	CAS#	Qual
1			1,2-Dichloroethane-d4	102	C2D4Cl2	017060-07-0	43
2			Propane, 2,2-difluoro-	80	C3H6F2	000420-45-1	4
3			Ethane, 1-chloro-1,1-difluoro-	100	C2H3ClF2	000075-68-3	2
4			Methanesulfinic acid	80	CH4O2S	017696-73-0	2
5			Propane, 1,1,2,2-tetrafluoro-	116	C3H4F4	040723-63-5	2



Data Path : Z:\voasrv\HPCHEM1\MSVOA_W\Data\VW052924\
Data File : VW028901.D
Acq On : 29 May 2024 23:27
Operator : SY/MD
Sample : P2647-10
Misc : 5.71g/10mL/MSVOA_W/SOIL/A
ALS Vial : 37 Sample Multiplier: 1

Instrument :
MSVOA_W
ClientSampleId :
BHBS4

Quant Method : Z:\voasrv\HPCHEM1\MSVOA_W\Method\SFAMWLM050224SMA.M
Quant Title : SFAM01.0

TIC Library : C:\Database\NIST20.L
TIC Integration Parameters: LSCINT.P

TIC Top Hit name	RT	EstConc	Units	Response	--Internal Standard--			
					#	RT	Resp	Conc
-----	-----	-----	-----	-----	-----	-----	-----	-----
unknown-01	2.582	5.3	ug/L	160111	1	8.892	752983	25.0