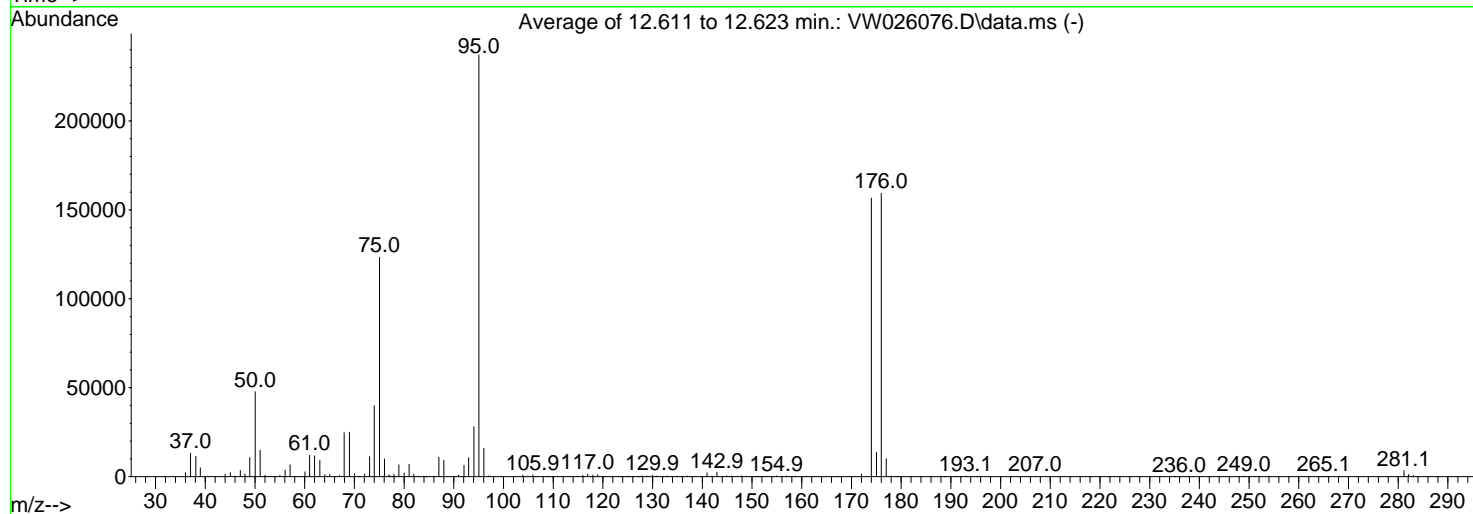
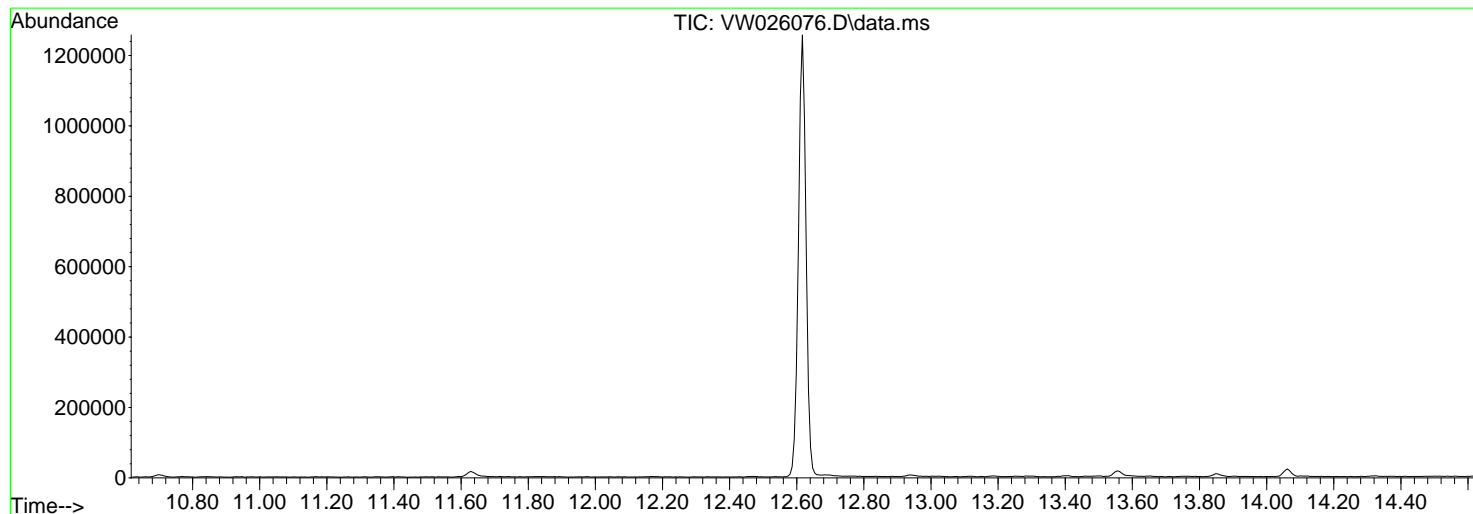


Data Path : Z:\voasrv\HPCHEM1\MSVOA_W\Data\VW053023\
 Data File : VW026076.D
 Acq On : 30 May 2023 07:23
 Operator : SY/MD
 Sample : BFB525
 Misc : 5.00g/10mL/MSVOA_W/SOIL
 ALS Vial : 1 Sample Multiplier: 1

Instrument :
 MSVOA_W
 ClientSampleId :
 BFB525

Integration File: LSCINT.P

Method : Z:\voasrv\HPCHEM1\MSVOA_W\Method\SFAMWLM053023SMA.M
 Title : SFAM01.0
 Last Update : Wed May 31 01:56:06 2023



AutoFind: Scans 1759, 1760, 1761; Background Corrected with Scan 1751

Target Mass	Rel. to Mass	Lower Limit%	Upper Limit%	Rel. Abn%	Raw Abn	Result
50	95	15	40	20.2	47821	PASS
75	95	30	80	52.0	123384	PASS
95	95	100	100	100.0	237163	PASS
96	95	5	9	6.7	15906	PASS
173	174	0.00	2	0.0	0	PASS
174	95	50	120	66.0	156587	PASS
175	174	5	9	8.8	13752	PASS
176	174	95	105	101.8	159339	PASS
177	176	5	10	6.3	10079	PASS

m/z	Abundance
36.00	113.0
37.20	55.0
38.10	76.0
38.90	70.0
40.00	526.0
40.90	76.0
41.60	80.0
42.30	104.0
42.90	79.0
43.90	434.0
45.10	91.0
47.10	67.0
48.00	58.0
48.80	69.0
49.70	60.0
50.70	53.0
52.90	70.0
53.80	52.0
55.10	69.0
57.20	102.0
61.10	60.0
66.20	54.0
67.90	68.0
71.70	56.0
76.80	56.0
80.00	58.0
84.00	61.0
84.70	59.0
88.00	70.0
100.60	89.0
119.00	56.0
128.70	74.0
207.00	56.0

Instrument :
MSVOA_W
ClientSampleId :
BFB525

m/z	Abundance
35.10	62.0
36.00	2458.0
37.10	13778.0
38.10	11896.0
39.10	5404.0
39.90	740.0
40.90	221.0
42.10	80.0
43.10	309.0
44.00	1840.0
45.00	2223.0
45.90	436.0
47.00	3388.0
48.00	1628.0
49.00	11678.0
50.10	50976.0
51.10	15211.0
52.10	719.0
53.10	319.0
53.70	65.0
55.00	787.0
56.00	3879.0
57.00	6960.0
57.90	280.0
58.80	145.0
59.00	146.0
60.10	2621.0
61.00	12553.0
62.00	11888.0
63.10	9917.0
64.00	1239.0
65.00	1441.0
65.90	115.0
66.90	803.0
68.00	23992.0
69.00	25096.0
70.00	1841.0
72.00	1423.0
73.00	11595.0
74.00	39040.0
75.00	126128.0
76.00	9769.0
77.00	1451.0
78.00	1519.0
78.90	7075.0
80.00	1986.0
81.00	7040.0
81.90	1457.0
82.90	224.0
83.80	83.0
84.40	93.0
87.00	10712.0
88.00	8987.0
91.00	1038.0
92.00	6338.0
93.00	10652.0
94.10	28672.0
95.10	229504.0
96.00	15271.0
97.00	594.0
102.70	132.0
103.90	877.0
104.90	304.0
105.90	944.0
106.80	195.0
109.00	56.0
110.10	209.0
110.90	157.0
112.00	197.0
113.00	175.0
114.80	237.0
115.90	783.0
117.00	1612.0
117.90	609.0
118.90	975.0
123.10	144.0
123.70	166.0
125.00	386.0
126.10	127.0
127.00	64.0
127.80	781.0
128.90	391.0
130.00	858.0
130.90	403.0
132.10	73.0
133.00	403.0
133.90	201.0
134.80	293.0
136.10	111.0
137.00	290.0
139.00	93.0
139.80	177.0

Instrument :
MSVOA_W
ClientSampleId :
BFB525

141.00	1739.0
142.10	313.0
142.90	2112.0
144.00	215.0
145.00	626.0
145.80	382.0
147.00	219.0
147.90	463.0
149.00	115.0
149.80	168.0
150.70	71.0
151.20	50.0
151.90	181.0
152.80	131.0
153.80	155.0
155.00	445.0
155.90	84.0
156.90	260.0
157.90	52.0
158.80	241.0
160.90	278.0
162.90	125.0
164.90	130.0
169.10	126.0
170.30	142.0
170.90	241.0
172.00	1593.0
174.00	139840.0
175.00	12490.0
176.00	133312.0
177.00	9792.0
178.10	284.0
178.90	142.0
190.80	547.0
192.10	114.0
193.10	581.0
194.00	105.0
195.20	66.0
202.00	51.0
204.90	175.0
207.00	274.0
208.10	187.0
235.00	70.0
236.00	81.0
249.00	444.0
250.20	140.0
251.20	181.0
252.10	101.0
265.10	505.0
265.70	110.0
266.20	133.0
267.00	156.0
279.60	92.0
281.10	5175.0
282.10	1925.0
283.10	717.0
284.10	58.0
285.20	126.0

Instrument :
MSVOA_W
ClientSampleId :
BFB525

m/z	Abundance
36.10	2706.0
37.00	15120.0
38.10	13344.0
39.00	5465.0
40.00	700.0
41.00	279.0
41.80	71.0
42.20	90.0
43.00	234.0
44.00	1659.0
45.10	2799.0
46.00	234.0
47.10	4050.0
48.00	1751.0
49.00	11596.0
50.00	53384.0
51.00	17128.0
52.00	834.0
53.00	298.0
54.00	114.0
55.00	860.0
56.10	4047.0
57.10	7871.0
58.10	337.0
60.10	3388.0
61.00	13303.0
62.00	13396.0
63.00	10181.0
64.00	1234.0
65.10	1424.0
66.20	217.0
67.00	677.0
68.00	28560.0
69.00	28440.0
70.10	1891.0
71.00	190.0
72.10	1701.0
73.10	12377.0
74.00	43648.0
75.10	137920.0
76.10	11506.0
77.00	1996.0
77.90	1539.0
79.00	7342.0
80.00	2573.0
81.00	8094.0
81.90	1506.0
83.00	203.0
84.00	117.0
85.90	404.0
87.00	12693.0
88.00	10230.0
91.00	1042.0
92.00	7193.0
93.00	12191.0
94.00	30960.0
95.00	271104.0
96.10	18408.0
97.00	456.0
102.80	209.0
103.90	1004.0
104.90	408.0
105.90	1150.0
107.10	288.0
110.10	313.0
110.90	233.0
111.90	231.0
112.90	175.0
114.90	279.0
116.00	828.0
116.90	1673.0
118.00	1003.0
118.90	1289.0
120.10	56.0
122.10	97.0
123.00	109.0
123.70	242.0
124.80	320.0
125.70	192.0
128.00	892.0
128.90	490.0
129.90	933.0
130.90	381.0
132.10	55.0
132.90	318.0
133.90	190.0
135.00	600.0
136.10	139.0
136.90	386.0
139.90	174.0
141.00	2670.0
141.90	411.0

Instrument :
MSVOA_W
ClientSampleId :
BFB525

143.00	2858.0
143.90	168.0
144.90	633.0
145.90	456.0
147.00	264.0
147.90	566.0
148.90	170.0
150.10	259.0
151.80	194.0
152.90	169.0
153.90	151.0
154.90	441.0
157.00	437.0
158.90	388.0
160.00	81.0
160.90	312.0
162.70	92.0
164.90	146.0
167.10	78.0
169.10	70.0
170.10	145.0
170.80	236.0
172.10	1725.0
174.00	172480.0
175.10	15551.0
176.00	180224.0
177.00	10453.0
178.00	402.0
178.80	162.0
179.20	105.0
191.10	269.0
193.00	274.0
194.00	52.0
202.00	58.0
205.20	151.0
207.00	342.0
249.00	303.0
250.10	51.0
251.00	72.0
252.10	76.0
264.70	235.0
265.10	153.0
266.20	67.0
279.60	95.0
281.20	3505.0
282.10	1005.0
283.00	867.0
283.90	191.0
285.20	63.0

Instrument :
MSVOA_W
ClientSampleId :
BFB525

m/z	Abundance
35.10	102.0
36.00	1838.0
37.00	10775.0
38.10	9174.0
39.00	4288.0
39.90	655.0
41.10	189.0
42.30	61.0
43.10	203.0
44.10	1628.0
45.00	1937.0
46.10	311.0
47.00	3252.0
48.00	1405.0
49.00	9180.0
50.00	39104.0
51.00	12286.0
52.00	667.0
53.10	144.0
53.70	85.0
55.00	762.0
56.00	3058.0
57.10	5462.0
58.00	236.0
60.00	2037.0
61.00	10325.0
62.00	9755.0
63.10	7243.0
64.10	958.0
65.00	1004.0
66.10	168.0
67.10	661.0
68.00	21912.0
69.00	21608.0
70.00	1495.0
71.30	169.0
72.10	1237.0
73.00	9671.0
74.00	37016.0
75.10	106104.0
76.00	8760.0
77.20	1190.0
78.00	974.0
79.00	5603.0
80.00	1843.0
81.00	5791.0
82.00	1389.0
82.90	174.0
83.90	54.0
85.90	516.0
87.00	9533.0
88.00	8523.0
90.90	755.0
92.10	5668.0
93.00	9110.0
94.00	24616.0
95.00	210880.0
96.00	14040.0
97.00	449.0
102.70	83.0
103.90	849.0
104.90	367.0
105.90	931.0
106.90	266.0
109.80	132.0
110.90	195.0
112.00	168.0
113.00	156.0
115.10	235.0
116.00	743.0
117.00	1095.0
118.00	850.0
119.00	1207.0
121.90	84.0
123.20	80.0
123.90	133.0
125.10	99.0
126.00	115.0
127.90	577.0
128.90	408.0
130.00	772.0
130.80	306.0
133.00	253.0
133.70	114.0
134.80	367.0
135.80	149.0
136.90	440.0
139.00	100.0
140.00	188.0
140.90	2008.0
141.90	248.0
142.90	2323.0

Instrument :
MSVOA_W
ClientSampleId :
BFB525

144.20	209.0
144.80	358.0
145.90	305.0
147.10	223.0
147.90	444.0
149.00	242.0
149.90	217.0
151.70	123.0
152.90	158.0
153.90	119.0
154.90	500.0
155.80	98.0
156.90	383.0
157.90	85.0
158.70	289.0
160.80	299.0
165.00	73.0
169.90	122.0
171.00	210.0
172.10	1145.0
174.00	157440.0
175.10	13215.0
176.00	164480.0
177.00	9991.0
178.00	347.0
178.80	67.0
188.70	58.0
190.90	101.0
193.10	274.0
206.90	175.0
249.00	87.0
251.10	130.0
265.00	126.0
281.10	1715.0
282.20	497.0
283.10	303.0
283.90	95.0

Instrument :
MSVOA_W
ClientSampleId :
BFB525