

Data Path : Z:\voasrv\HPCHEM1\MSVOA_W\Data\VW060324\
 Data File : VW028972.D
 Acq On : 03 Jun 2024 18:42
 Operator : SY/MD
 Sample : P2678-15
 Misc : 5.79g/10mL/MSVOA_W/SOIL/A
 ALS Vial : 26 Sample Multiplier: 1

Instrument :
 MSVOA_W
 ClientSampleId :

Quant Time: Jun 04 02:21:53 2024
 Quant Method : Z:\voasrv\HPCHEM1\MSVOA_W\Method\SFAMWLM060324SMA.M
 Quant Title : SFAM01.0
 QLast Update : Tue Jun 04 02:14:06 2024
 Response via : Initial Calibration

Compound	R.T.	QIon	Response	Conc	Units	Dev(Min)

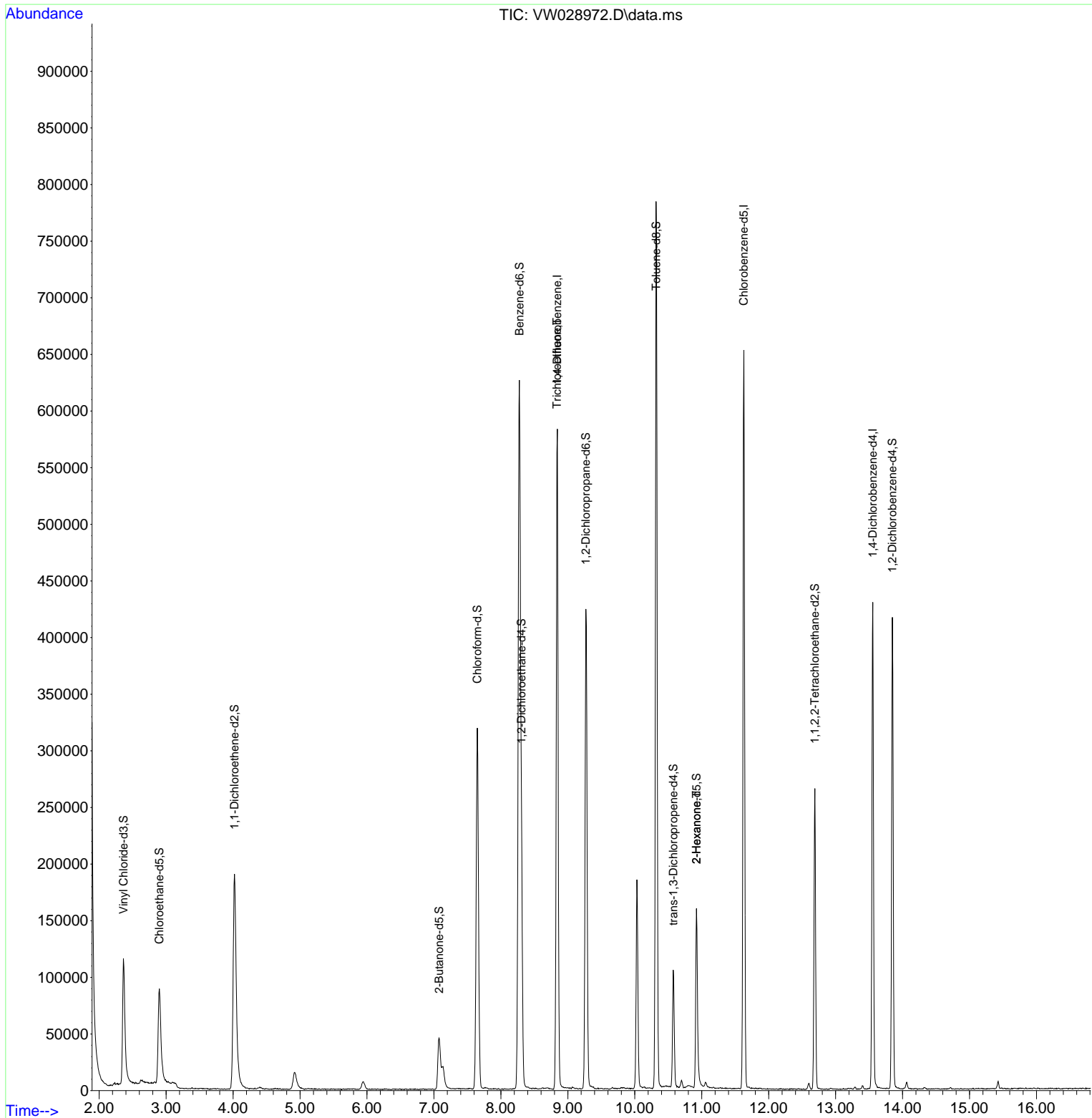
Internal Standards						
1) 1,4-Difluorobenzene	8.843	114	463574	25.000	ug/L	0.00
28) Chlorobenzene-d5	11.629	117	351444	25.000	ug/L	0.00
58) 1,4-Dichlorobenzene-d4	13.556	152	105865	25.000	ug/L	0.00
System Monitoring Compounds						
4) Vinyl Chloride-d3	2.363	65	176399	23.953	ug/L	0.00
Spiked Amount	25.000	Range 30 - 150	Recovery =	95.800%		
7) Chloroethane-d5	2.899	69	138823	24.548	ug/L	0.00
Spiked Amount	25.000	Range 30 - 150	Recovery =	98.200%		
11) 1,1-Dichloroethene-d2	4.021	65	73745	22.783	ug/L	0.00
Spiked Amount	25.000	Range 45 - 110	Recovery =	91.120%		
21) 2-Butanone-d5	7.075	46	77816	51.716	ug/L	0.00
Spiked Amount	50.000	Range 20 - 135	Recovery =	103.440%		
24) Chloroform-d	7.648	84	316248	23.912	ug/L	0.00
Spiked Amount	25.000	Range 40 - 150	Recovery =	95.640%		
26) 1,2-Dichloroethane-d4	8.307	65	169894	24.401	ug/L	0.00
Spiked Amount	25.000	Range 70 - 130	Recovery =	97.600%		
32) Benzene-d6	8.276	84	631900	29.294	ug/L	0.00
Spiked Amount	25.000	Range 20 - 135	Recovery =	117.160%		
36) 1,2-Dichloropropane-d6	9.270	67	197391	30.181	ug/L	0.00
Spiked Amount	25.000	Range 70 - 120	Recovery =	120.720%#		
41) Toluene-d8	10.319	98	498450	25.895	ug/L	0.00
Spiked Amount	25.000	Range 30 - 130	Recovery =	103.560%		
43) trans-1,3-Dichloroprop...	10.575	79	55394	22.042	ug/L	0.00
Spiked Amount	25.000	Range 30 - 135	Recovery =	88.160%		
47) 2-Hexanone-d5	10.922	63	50520	58.535	ug/L	0.00
Spiked Amount	50.000	Range 20 - 135	Recovery =	117.080%		
56) 1,1,2,2-Tetrachloroeth...	12.690	84	130907	28.812	ug/L	0.00
Spiked Amount	25.000	Range 45 - 120	Recovery =	115.240%		
66) 1,2-Dichlorobenzene-d4	13.848	152	101021	26.891	ug/L	0.00
Spiked Amount	25.000	Range 75 - 120	Recovery =	107.560%		
Target Compounds						
						Qvalue
34) Trichloroethene	8.837	95	14056	2.447	ug/L #	9
48) 2-Hexanone	10.922	43	10351	4.743	ug/L #	68

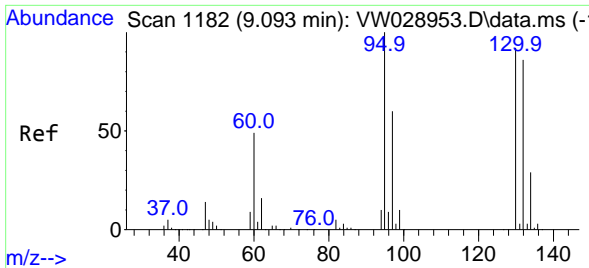
(#) = qualifier out of range (m) = manual integration (+) = signals summed

Data Path : Z:\voasrv\HPCHEM1\MSVOA_W\Data\VW060324\
 Data File : VW028972.D
 Acq On : 03 Jun 2024 18:42
 Operator : SY/MD
 Sample : P2678-15
 Misc : 5.79g/10mL/MSVOA_W/SOIL/A
 ALS Vial : 26 Sample Multiplier: 1

Instrument :
 MSVOA_W
 ClientSampleId :

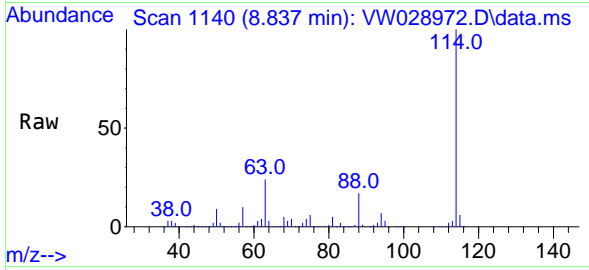
Quant Time: Jun 04 02:21:53 2024
 Quant Method : Z:\voasrv\HPCHEM1\MSVOA_W\Method\SFAMWLM060324SMA.M
 Quant Title : SFAM01.0
 QLast Update : Tue Jun 04 02:14:06 2024
 Response via : Initial Calibration





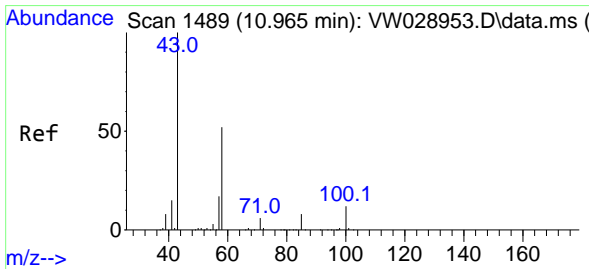
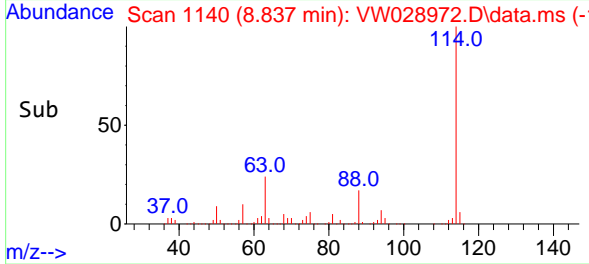
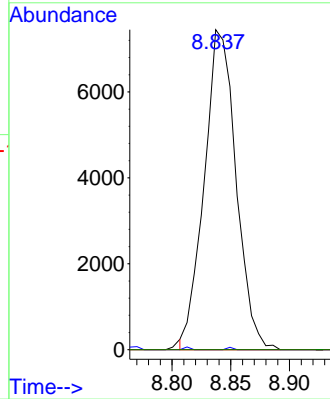
#34
 Trichloroethene
 Concen: 2.447 ug/L
 RT: 8.837 min Scan# 1182
 Delta R.T. -0.256 min
 Lab File: VW028972.D
 Acq: 03 Jun 2024 18:42

Instrument : MSVOA_W
 ClientSampleId :

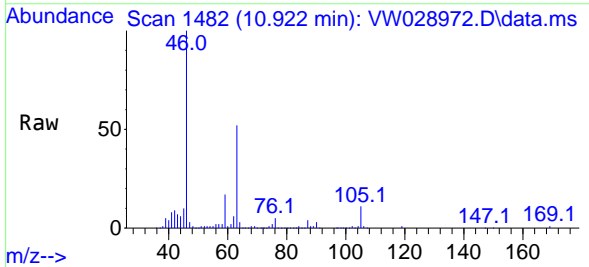


Tgt Ion: 95 Resp: 14056

Ion	Ratio	Lower	Upper
95	100		
97	0.0	41.9	77.7#
132	0.0	60.1	111.5#
130	0.0	64.2	119.2#



#48
 2-Hexanone
 Concen: 4.743 ug/L
 RT: 10.922 min Scan# 1482
 Delta R.T. -0.043 min
 Lab File: VW028972.D
 Acq: 03 Jun 2024 18:42



Tgt Ion: 43 Resp: 10351

Ion	Ratio	Lower	Upper
43	100		
58	22.3	41.4	62.0#
57	22.8	14.2	21.4#
100	4.2	9.1	13.7#

