

Data Path : Z:\voasrv\HPCHEM1\MSVOA_W\Data\VW060424\
 Data File : VW028998.D
 Acq On : 04 Jun 2024 16:29
 Operator : SY/MD
 Sample : P2710-03
 Misc : 4.77g/10mL/MSVOA_W/SOIL/A
 ALS Vial : 19 Sample Multiplier: 1

Instrument :
 MSVOA_W
ClientSampleId :
 A4B23

Quant Time: Jun 05 00:50:43 2024
 Quant Method : Z:\voasrv\HPCHEM1\MSVOA_W\Method\SFAMWLM060324SMA.M
 Quant Title : SFAM01.0
 QLast Update : Wed Jun 05 00:46:16 2024
 Response via : Initial Calibration

Compound	R.T.	QIon	Response	Conc	Units	Dev(Min)

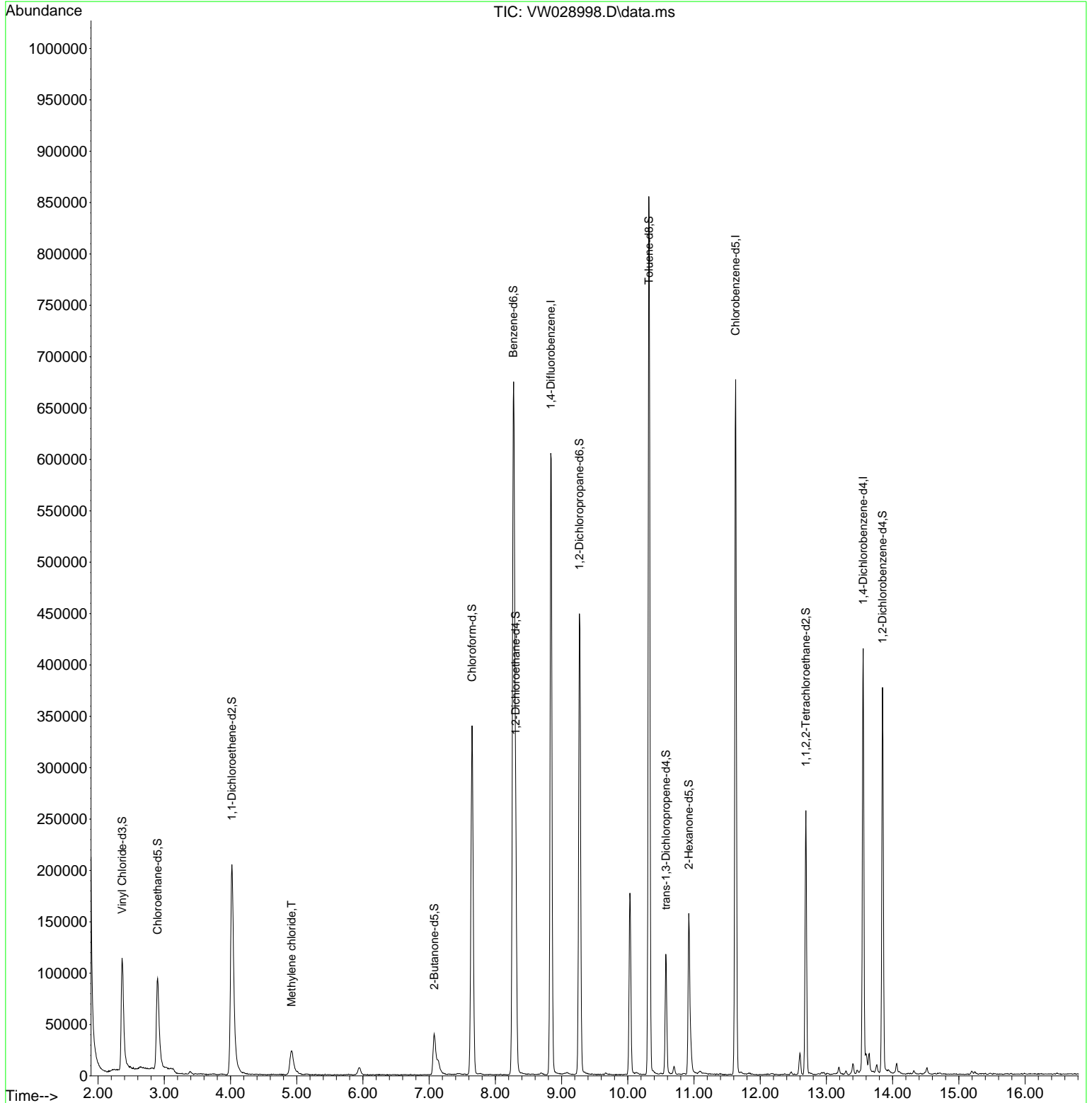
Internal Standards						
1) 1,4-Difluorobenzene	8.837	114	482933	25.000	ug/L	0.00
28) Chlorobenzene-d5	11.629	117	359910	25.000	ug/L	0.00
58) 1,4-Dichlorobenzene-d4	13.556	152	99995	25.000	ug/L	0.00
System Monitoring Compounds						
4) Vinyl Chloride-d3	2.363	65	185714	24.207	ug/L	0.00
Spiked Amount	25.000	Range 30 - 150	Recovery =	96.840%		
7) Chloroethane-d5	2.899	69	147320	25.006	ug/L	0.00
Spiked Amount	25.000	Range 30 - 150	Recovery =	100.040%		
11) 1,1-Dichloroethene-d2	4.021	65	83250	24.688	ug/L	0.00
Spiked Amount	25.000	Range 45 - 110	Recovery =	98.760%		
21) 2-Butanone-d5	7.075	46	65480	41.773	ug/L	0.00
Spiked Amount	50.000	Range 20 - 135	Recovery =	83.540%		
24) Chloroform-d	7.648	84	333541	24.209	ug/L	0.00
Spiked Amount	25.000	Range 40 - 150	Recovery =	96.840%		
26) 1,2-Dichloroethane-d4	8.307	65	189232	26.088	ug/L	0.00
Spiked Amount	25.000	Range 70 - 130	Recovery =	104.360%		
32) Benzene-d6	8.270	84	678788	30.728	ug/L	0.00
Spiked Amount	25.000	Range 20 - 135	Recovery =	122.920%		
36) 1,2-Dichloropropane-d6	9.270	67	209314	31.251	ug/L	0.00
Spiked Amount	25.000	Range 70 - 120	Recovery =	125.000%#		
41) Toluene-d8	10.319	98	559228	28.369	ug/L	0.00
Spiked Amount	25.000	Range 30 - 130	Recovery =	113.480%		
43) trans-1,3-Dichloroprop...	10.575	79	63319	24.603	ug/L	0.00
Spiked Amount	25.000	Range 30 - 135	Recovery =	98.400%		
47) 2-Hexanone-d5	10.922	63	47055	53.238	ug/L	0.00
Spiked Amount	50.000	Range 20 - 135	Recovery =	106.480%		
56) 1,1,2,2-Tetrachloroeth...	12.690	84	124117	26.675	ug/L	0.00
Spiked Amount	25.000	Range 45 - 120	Recovery =	106.680%		
66) 1,2-Dichlorobenzene-d4	13.848	152	93341	26.305	ug/L	0.00
Spiked Amount	25.000	Range 75 - 120	Recovery =	105.240%		
Target Compounds						
16) Methylene chloride	4.923	84	21442	2.958	ug/L	95

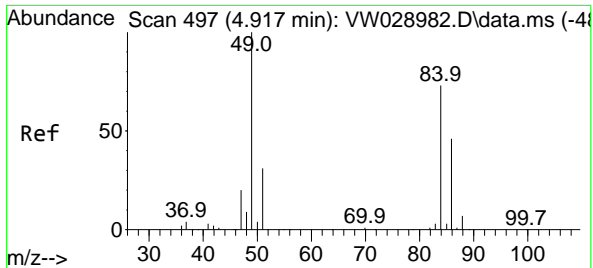
(#) = qualifier out of range (m) = manual integration (+) = signals summed

Data Path : Z:\voasrv\HPCHEM1\MSVOA_W\Data\VW060424\
 Data File : VW028998.D
 Acq On : 04 Jun 2024 16:29
 Operator : SY/MD
 Sample : P2710-03
 Misc : 4.77g/10mL/MSVOA_W/SOIL/A
 ALS Vial : 19 Sample Multiplier: 1

Instrument :
 MSVOA_W
 ClientSampleId :
 A4B23

Quant Time: Jun 05 00:50:43 2024
 Quant Method : Z:\voasrv\HPCHEM1\MSVOA_W\Method\SFAMWLM060324SMA.M
 Quant Title : SFAM01.0
 QLast Update : Wed Jun 05 00:46:16 2024
 Response via : Initial Calibration





#16
 Methylene chloride
 Concen: 2.958 ug/L
 RT: 4.923 min Scan# 49
 Delta R.T. 0.006 min
 Lab File: VW028998.D
 Acq: 04 Jun 2024 16:29

Instrument : MSVOA_W
 ClientSampleId : A4B23

Tgt Ion: 84 Resp: 21442

Ion	Ratio	Lower	Upper
84	100		
86	65.9	43.8	81.4
49	136.4	91.3	169.5

