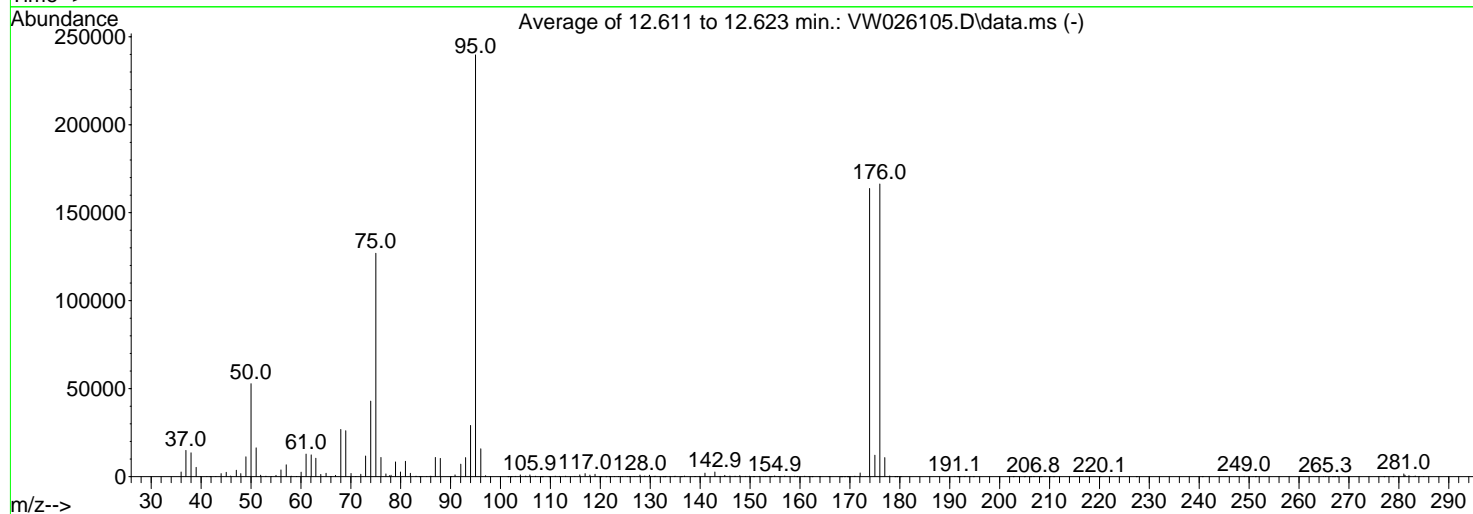
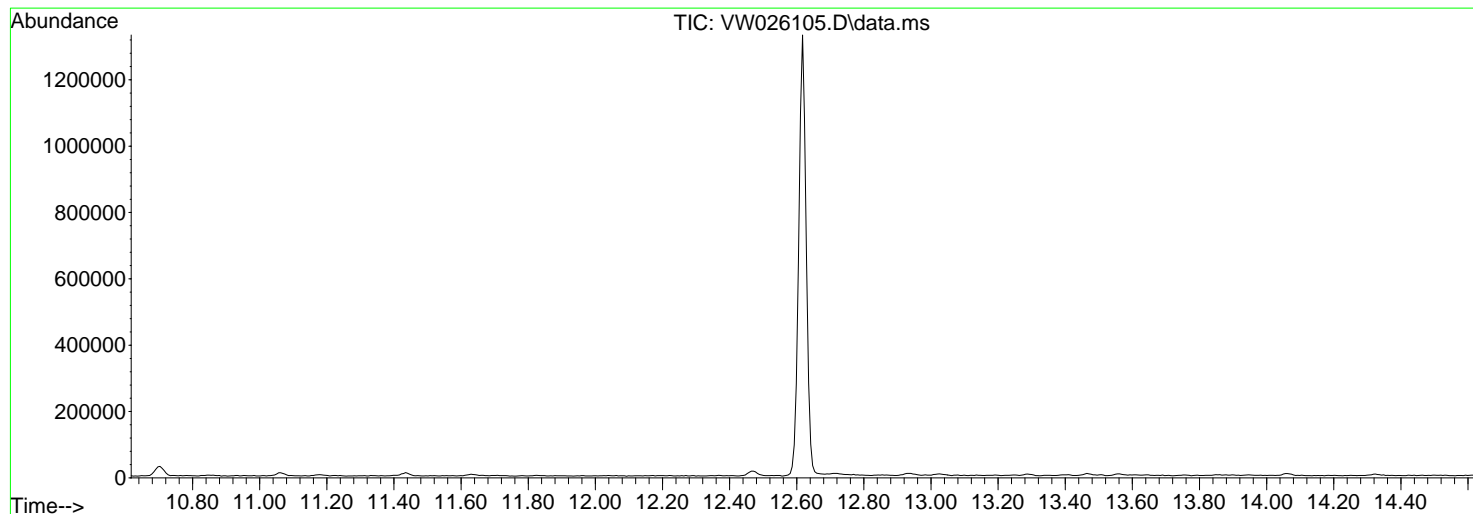


Data Path : Z:\voasrv\HPCHEM1\MSVOA_W\Data\VW060623\
 Data File : VW026105.D
 Acq On : 06 Jun 2023 08:36
 Operator : SY/MD
 Sample : BFB527
 Misc : 5.00g/10mL/MSVOA_W/SOIL
 ALS Vial : 1 Sample Multiplier: 1

Instrument :
 MSVOA_W
 ClientSampleId :
 BFB527

Integration File: rteint.p

Method : Z:\voasrv\HPCHEM1\MSVOA_V\Method\SFAMVTR01223WMA.M
 Title : TRACE VOA SFAM1.0
 Last Update : Thu Jan 12 18:58:37 2023



AutoFind: Scans 1759, 1760, 1761; Background Corrected with Scan 1749

Target Mass	Rel. to Mass	Lower Limit%	Upper Limit%	Rel. Abn%	Raw Abn	Result Pass/Fail
50	95	15	40	22.0	52821	PASS
75	95	30	80	53.0	126977	PASS
95	95	100	100	100.0	239723	PASS
96	95	5	9	6.6	15795	PASS
173	174	0.00	2	0.0	0	PASS
174	95	50	120	68.3	163819	PASS
175	174	5	9	7.4	12204	PASS
176	174	95	105	101.5	166315	PASS
177	176	5	10	6.5	10861	PASS

m/z	Abundance
35.10	99.0
35.40	99.0
36.20	174.0
36.90	103.0
37.60	118.0
38.40	79.0
39.00	131.0
39.90	1013.0
40.80	240.0
41.30	187.0
42.10	200.0
42.90	165.0
44.00	350.0
45.20	62.0
45.80	54.0
47.10	106.0
47.90	140.0
48.60	109.0
49.10	126.0
51.40	71.0
52.20	117.0
53.00	73.0
55.00	107.0
56.00	105.0
57.10	194.0
58.00	59.0
58.80	67.0
60.50	56.0
61.10	80.0
61.70	88.0
62.50	80.0
63.90	105.0
66.30	72.0
67.10	54.0
69.10	114.0
70.10	129.0
71.00	101.0
72.90	140.0
75.20	98.0
76.50	52.0
79.10	54.0
79.60	86.0
80.30	69.0
82.60	79.0
84.80	72.0
88.80	96.0
97.60	62.0
98.20	67.0
103.30	85.0
104.00	51.0
111.80	66.0
116.70	58.0
120.70	89.0
125.20	57.0
131.30	51.0
132.50	55.0
152.40	67.0
165.00	72.0
166.70	52.0
207.30	59.0
217.90	54.0
219.20	63.0
252.00	56.0
288.10	89.0

Instrument :
MSVOA_W
ClientSampleId :
BFB527

m/z	Abundance
36.00	2670.0
37.00	15318.0
38.00	13632.0
39.00	5548.0
40.10	1142.0
40.80	185.0
41.20	144.0
42.10	158.0
43.00	319.0
44.00	2384.0
45.00	2771.0
46.10	502.0
47.00	3751.0
48.00	1926.0
49.00	11459.0
50.00	52664.0
51.10	16092.0
52.00	712.0
53.00	425.0
54.10	106.0
55.00	887.0
56.00	4048.0
57.10	7117.0
58.20	389.0
59.20	196.0
60.10	2420.0
61.00	12902.0
62.10	12258.0
63.00	10397.0
64.00	1354.0
65.10	2249.0
66.10	276.0
67.00	667.0
68.00	27000.0
69.00	24624.0
70.10	2007.0
71.10	160.0
72.10	1364.0
73.00	11416.0
74.00	41504.0
75.00	123640.0
76.00	10903.0
77.00	1663.0
77.80	1130.0
78.90	8594.0
79.90	2753.0
81.00	8562.0
82.00	1822.0
83.00	292.0
83.80	118.0
84.30	114.0
85.20	148.0
85.90	433.0
87.00	10713.0
88.00	9246.0
90.90	996.0
92.10	6453.0
93.00	10689.0
94.00	27520.0
95.00	223616.0
96.10	15749.0
97.00	617.0
97.90	74.0
101.50	62.0
103.00	220.0
103.90	949.0
105.10	274.0
105.90	995.0
107.00	323.0
108.00	164.0
109.70	144.0
111.00	288.0
112.00	194.0
113.20	219.0
114.90	285.0
115.90	908.0
116.90	1552.0
117.90	1044.0
119.00	1351.0
120.10	103.0
121.10	74.0
121.80	72.0
122.90	123.0
123.60	155.0
124.50	130.0
125.40	171.0
125.80	127.0
126.80	157.0
127.90	832.0
129.00	315.0
129.90	852.0
130.80	251.0

Instrument :
MSVOA_W
ClientSampleId :
BFB527

131.90	66.0
132.70	232.0
133.20	384.0
134.00	330.0
134.80	423.0
136.80	406.0
138.90	105.0
140.00	236.0
140.90	1497.0
142.10	331.0
143.00	2403.0
143.80	251.0
144.90	741.0
145.90	369.0
147.10	340.0
147.90	462.0
149.00	246.0
150.00	254.0
151.80	134.0
152.80	162.0
153.20	144.0
154.00	126.0
155.00	338.0
155.70	94.0
156.00	92.0
157.00	235.0
158.00	127.0
158.90	164.0
159.40	117.0
161.10	214.0
161.80	59.0
162.40	56.0
163.90	59.0
164.90	155.0
165.80	50.0
170.10	186.0
171.00	364.0
172.10	2038.0
173.90	140864.0
175.00	11396.0
176.00	140736.0
177.00	8899.0
178.00	388.0
179.00	138.0
191.10	306.0
191.60	94.0
192.20	181.0
192.90	412.0
194.10	94.0
194.70	82.0
202.70	86.0
205.20	110.0
206.20	86.0
206.80	198.0
208.10	102.0
210.80	60.0
220.10	100.0
249.00	299.0
249.90	112.0
250.80	88.0
251.30	69.0
252.00	60.0
265.30	332.0
266.20	108.0
267.10	124.0
267.70	67.0
277.00	62.0
278.80	56.0
281.00	3400.0
282.00	834.0
283.20	785.0
284.00	99.0
285.10	88.0

Instrument :
MSVOA_W
ClientSampleId :
BFB527

m/z	Abundance
36.00	3118.0
37.00	16880.0
38.00	14780.0
39.00	5954.0
40.00	986.0
41.40	187.0
42.20	167.0
43.00	186.0
44.00	2292.0
45.00	2705.0
45.90	346.0
47.10	4337.0
48.00	2157.0
49.00	12886.0
50.00	58608.0
51.00	18896.0
52.00	946.0
53.00	342.0
54.10	188.0
55.00	971.0
56.00	4118.0
57.10	7498.0
58.00	357.0
59.10	154.0
60.00	3115.0
61.10	14281.0
62.00	14219.0
63.00	11306.0
64.10	1552.0
65.00	1863.0
66.20	304.0
66.90	1019.0
68.00	29920.0
69.00	30592.0
70.00	2183.0
71.00	184.0
72.00	1659.0
73.00	14217.0
74.00	48656.0
75.00	146688.0
76.10	12097.0
77.00	1556.0
78.00	1502.0
79.00	9515.0
80.00	2704.0
80.90	9349.0
81.90	1968.0
83.10	235.0
84.20	82.0
85.20	93.0
86.10	439.0
87.00	12574.0
87.90	11959.0
90.90	1257.0
92.00	8195.0
93.00	12386.0
94.00	32280.0
95.00	274176.0
96.00	17800.0
97.00	416.0
98.00	73.0
102.10	73.0
102.90	222.0
104.00	1191.0
105.00	483.0
105.90	1011.0
107.10	226.0
108.10	72.0
108.40	63.0
109.90	190.0
110.90	193.0
111.80	263.0
113.00	381.0
114.70	160.0
115.90	1265.0
117.00	2116.0
117.90	1012.0
118.90	1564.0
119.80	112.0
122.00	121.0
122.90	113.0
123.70	101.0
124.40	84.0
125.00	144.0
126.00	207.0
126.80	117.0
128.00	942.0
128.80	329.0
129.90	803.0
131.00	385.0
131.90	92.0
133.10	258.0

Instrument :
MSVOA_W
ClientSampleId :
BFB527

133.90	222.0
135.00	417.0
136.80	412.0
139.10	183.0
139.80	171.0
140.90	2251.0
143.00	3042.0
144.00	304.0
145.00	844.0
146.00	429.0
147.00	207.0
147.90	567.0
149.00	223.0
149.80	287.0
151.80	189.0
152.70	102.0
153.10	99.0
153.80	256.0
154.20	136.0
155.00	596.0
155.80	129.0
156.90	499.0
158.00	136.0
158.90	253.0
160.90	235.0
165.90	77.0
168.10	58.0
168.40	63.0
169.50	123.0
171.00	376.0
172.00	2494.0
174.00	188224.0
175.00	13431.0
176.00	192768.0
177.00	12981.0
177.90	408.0
179.40	52.0
180.10	89.0
191.00	165.0
191.90	103.0
193.10	259.0
194.10	59.0
194.80	56.0
202.80	56.0
205.10	61.0
207.00	201.0
208.30	67.0
249.00	170.0
249.80	86.0
250.70	123.0
252.00	71.0
264.80	231.0
266.20	94.0
266.70	53.0
267.60	87.0
269.80	83.0
278.80	55.0
281.20	2426.0
282.00	796.0
283.30	326.0
284.10	157.0
285.00	70.0

Instrument :
MSVOA_W
ClientSampleId :
BFB527

m/z	Abundance
35.20	88.0
36.00	2600.0
37.00	12841.0
38.00	12217.0
39.00	4777.0
40.00	1116.0
41.10	135.0
41.80	112.0
43.00	321.0
44.00	1694.0
45.10	2054.0
46.00	332.0
47.00	3156.0
48.00	1606.0
49.00	9754.0
50.00	47192.0
51.00	14085.0
51.90	801.0
53.10	257.0
54.10	113.0
55.00	771.0
56.10	3515.0
57.00	6300.0
58.10	372.0
60.00	2080.0
61.00	11510.0
62.00	10608.0
63.00	9787.0
64.00	1254.0
65.00	1538.0
65.90	210.0
67.00	645.0
68.00	23680.0
69.00	23424.0
70.00	1803.0
71.10	226.0
71.90	1140.0
73.00	10061.0
74.00	38608.0
75.00	110896.0
76.00	9773.0
77.10	1329.0
77.70	667.0
78.10	832.0
78.90	7111.0
80.00	2423.0
81.00	8167.0
81.90	1856.0
83.00	229.0
85.90	304.0
86.90	9583.0
88.00	9832.0
90.00	79.0
90.90	894.0
92.00	6669.0
93.00	9520.0
94.00	27432.0
95.00	221376.0
96.00	13837.0
97.00	649.0
97.90	94.0
103.00	89.0
104.00	1005.0
105.10	464.0
105.90	1043.0
106.90	213.0
108.20	80.0
109.80	184.0
110.90	233.0
111.80	199.0
113.10	311.0
115.00	227.0
116.00	710.0
116.90	1636.0
117.90	686.0
118.90	1213.0
121.90	123.0
122.70	81.0
124.10	217.0
126.00	136.0
127.90	969.0
128.90	404.0
129.80	696.0
130.90	329.0
132.00	69.0
132.90	141.0
133.90	87.0
134.90	420.0
136.20	101.0
136.90	402.0
138.90	206.0
139.70	156.0

Instrument :
MSVOA_W
ClientSampleId :
BFB527

141.00	2299.0
142.90	2482.0
144.00	188.0
145.00	699.0
145.90	404.0
146.90	217.0
148.00	535.0
149.10	190.0
149.90	229.0
150.70	63.0
151.90	127.0
152.70	162.0
153.10	116.0
154.00	180.0
154.80	450.0
156.90	446.0
157.90	53.0
159.00	319.0
160.90	306.0
164.80	53.0
168.40	71.0
168.90	126.0
169.70	135.0
172.00	1758.0
174.00	162368.0
175.00	11786.0
176.00	165440.0
177.00	10703.0
178.10	251.0
180.10	60.0
191.00	149.0
193.00	221.0
194.10	67.0
204.90	73.0
206.80	180.0
207.30	98.0
210.00	50.0
227.40	69.0
240.60	67.0
249.00	105.0
249.80	103.0
250.80	58.0
251.20	65.0
264.90	91.0
269.80	67.0
281.00	1130.0
282.20	478.0
283.00	254.0
284.20	52.0
284.90	62.0

Instrument :
MSVOA_W
ClientSampleId :
BFB527