

Data Path : Z:\voasrv\HPCHEM1\MSVOA_W\Data\VW060723\
 Data File : VW026126.D
 Acq On : 07 Jun 2023 16:11
 Operator : SY/MD
 Sample : VSTDCCC025EC
 Misc : 5.00g/10mL/MSVOA_W/SOIL
 ALS Vial : 1 Sample Multiplier: 1

Instrument :
 MSVOA_W
 ClientSampleId :
 VSTD025509

Quant Time: Jun 08 00:22:14 2023
 Quant Method : Z:\voasrv\HPCHEM1\MSVOA_W\Method\SFAMWLM053023SMA.M
 Quant Title : SFAM01.0
 QLast Update : Thu Jun 08 00:20:42 2023
 Response via : Initial Calibration

Compound	R.T.	QIon	Response	Conc	Units	Dev(Min)
Internal Standards						
1) 1,4-Difluorobenzene	8.843	114	735470	25.000	ug/L	0.00
28) Chlorobenzene-d5	11.629	117	661880	25.000	ug/L	0.00
58) 1,4-Dichlorobenzene-d4	13.556	152	329039	25.000	ug/L	0.00
System Monitoring Compounds						
4) Vinyl Chloride-d3	2.363	65	262654	25.386	ug/L	0.00
Spiked Amount	25.000	Range 30 - 150	Recovery =	101.560%		
7) Chloroethane-d5	2.893	69	218165	28.168	ug/L	0.00
Spiked Amount	25.000	Range 30 - 150	Recovery =	112.680%		
11) 1,1-Dichloroethene-d2	4.021	65	132002	25.874	ug/L	0.00
Spiked Amount	25.000	Range 45 - 110	Recovery =	103.480%		
21) 2-Butanone-d5	7.075	46	154687	51.353	ug/L	0.00
Spiked Amount	50.000	Range 20 - 135	Recovery =	102.700%		
24) Chloroform-d	7.648	84	544068	25.262	ug/L	0.00
Spiked Amount	25.000	Range 40 - 150	Recovery =	101.040%		
26) 1,2-Dichloroethane-d4	8.300	65	289250	24.561	ug/L	0.00
Spiked Amount	25.000	Range 70 - 130	Recovery =	98.240%		
32) Benzene-d6	8.270	84	1107134	24.859	ug/L	0.00
Spiked Amount	25.000	Range 20 - 135	Recovery =	99.440%		
36) 1,2-Dichloropropane-d6	9.270	67	346576	24.563	ug/L	0.00
Spiked Amount	25.000	Range 70 - 120	Recovery =	98.240%		
41) Toluene-d8	10.325	98	968075	24.510	ug/L	0.00
Spiked Amount	25.000	Range 30 - 130	Recovery =	98.040%		
43) trans-1,3-Dichloroprop...	10.574	79	129461	23.154	ug/L	0.00
Spiked Amount	25.000	Range 30 - 135	Recovery =	92.600%		
47) 2-Hexanone-d5	10.922	63	109383	49.165	ug/L	0.00
Spiked Amount	50.000	Range 20 - 135	Recovery =	98.340%		
56) 1,1,2,2-Tetrachloroeth...	12.690	84	244800	23.842	ug/L	0.00
Spiked Amount	25.000	Range 45 - 120	Recovery =	95.360%		
66) 1,2-Dichlorobenzene-d4	13.848	152	289357	22.975	ug/L	0.00
Spiked Amount	25.000	Range 75 - 120	Recovery =	91.920%		
Target Compounds						
2) Dichlorodifluoromethane	2.021	85	218203	24.202	ug/L	98
3) Chloromethane	2.222	50	296188	25.621	ug/L	98
5) Vinyl chloride	2.369	62	324756	26.281	ug/L	98
6) Bromomethane	2.789	94	174312	25.876	ug/L	100
8) Chloroethane	2.936	64	186147	27.876	ug/L	98
9) Trichlorofluoromethane	3.265	101	214494	26.981	ug/L	99
10) 1,1,2-Trichloro-1,2,2-...	4.070	101	255328	25.453	ug/L #	71
12) 1,1-Dichloroethene	4.039	96	237765	25.391	ug/L	91
13) Acetone	4.118	43	149502	64.142	ug/L	100
14) Carbon disulfide	4.387	76	808092	24.446	ug/L	99
15) Methyl Acetate	4.667	43	127113	24.299	ug/L	100
16) Methylene chloride	4.911	84	268176	22.846	ug/L	99
17) trans-1,2-Dichloroethene	5.423	96	255748	24.342	ug/L	97
18) Methyl tert-butyl Ether	5.423	73	376194	22.719	ug/L	99
19) 1,1-Dichloroethane	6.215	63	528070	24.689	ug/L	99
20) cis-1,2-Dichloroethene	7.167	96	272747	24.508	ug/L	97
22) 2-Butanone	7.160	43	190052	57.162	ug/L	97
23) Bromochloromethane	7.514	128	112290	23.659	ug/L	92
25) Chloroform	7.673	83	487822	24.487	ug/L	96

Data Path : Z:\voasrv\HPCHEM1\MSVOA_W\Data\VW060723\
 Data File : VW026126.D
 Acq On : 07 Jun 2023 16:11
 Operator : SY/MD
 Sample : VSTDCCC025EC
 Misc : 5.00g/10mL/MSVOA_W/SOIL
 ALS Vial : 1 Sample Multiplier: 1

Instrument :
 MSVOA_W
 ClientSampleId :
 VSTD025509

Quant Time: Jun 08 00:22:14 2023
 Quant Method : Z:\voasrv\HPCHEM1\MSVOA_W\Method\SFAMWLM053023SMA.M
 Quant Title : SFAM01.0
 QLast Update : Thu Jun 08 00:20:42 2023
 Response via : Initial Calibration

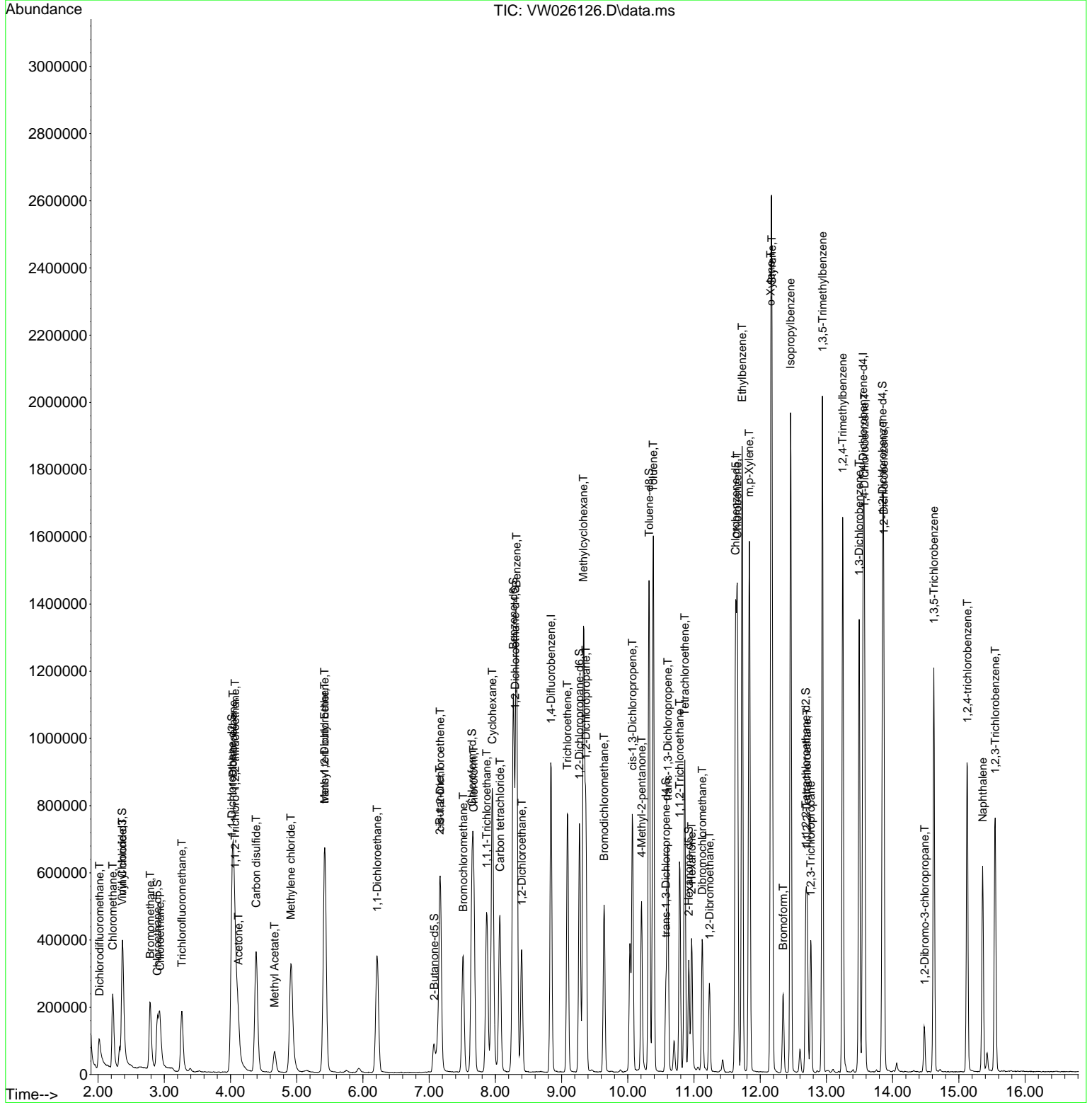
Compound	R.T.	QIon	Response	Conc	Units	Dev(Min)
27) 1,2-Dichloroethane	8.398	62	330973	24.088	ug/L	99
29) Cyclohexane	7.953	56	502538	24.593	ug/L	100
30) 1,1,1-Trichloroethane	7.868	97	384879	23.962	ug/L	98
31) Carbon tetrachloride	8.069	117	353439	24.114	ug/L	99
33) Benzene	8.319	78	1101050	24.284	ug/L	100
34) Trichloroethene	9.087	95	281508	24.247	ug/L	95
35) Methylcyclohexane	9.331	83	511748	24.910	ug/L	100
37) 1,2-Dichloropropane	9.367	63	299759	24.409	ug/L	99
38) Bromodichloromethane	9.642	83	335401	23.508	ug/L	98
39) cis-1,3-Dichloropropene	10.068	75	437357	24.234	ug/L	100
40) 4-Methyl-2-pentanone	10.209	43	354435	48.953	ug/L	100
42) Toluene	10.385	91	1130507	24.377	ug/L	99
44) trans-1,3-Dichloropropene	10.605	75	364025	24.212	ug/L	97
45) 1,1,2-Trichloroethane	10.782	97	191358	23.643	ug/L	99
46) Tetrachloroethene	10.861	164	201481	24.535	ug/L	94
48) 2-Hexanone	10.965	43	268711	52.635	ug/L	99
49) Dibromochloromethane	11.123	129	197864	23.317	ug/L	97
50) 1,2-Dibromoethane	11.233	107	177156	23.639	ug/L	98
51) Chlorobenzene	11.654	112	696246	23.958	ug/L	98
52) Ethylbenzene	11.727	91	1276343	24.398	ug/L	99
53) m,p-Xylene	11.836	106	475824	24.449	ug/L	93
54) o-Xylene	12.160	106	452234	24.620	ug/L	96
55) Styrene	12.178	104	774735	24.585	ug/L	99
57) 1,1,2,2-Tetrachloroethane	12.708	83	226427	23.116	ug/L	98
59) Bromoform	12.349	173	106893	21.629	ug/L	100
60) Isopropylbenzene	12.458	105	1210182	23.412	ug/L	99
61) 1,2,3-Trichloropropane	12.763	75	163329	22.160	ug/L	99
62) 1,3,5-Trimethylbenzene	12.940	105	991879	24.139	ug/L	99
63) 1,2,4-Trimethylbenzene	13.245	105	852132	22.642	ug/L	100
64) 1,3-Dichlorobenzene	13.495	146	507853	23.367	ug/L	97
65) 1,4-Dichlorobenzene	13.574	146	498986	22.805	ug/L	99
67) 1,2-Dichlorobenzene	13.867	146	456516	23.391	ug/L	95
68) 1,2-Dibromo-3-chloropr...	14.482	75	35985	21.073	ug/L	95
69) 1,3,5-Trichlorobenzene	14.623	180	321353	21.525	ug/L	98
70) 1,2,4-trichlorobenzene	15.129	180	272757	22.141	ug/L	97
71) Naphthalene	15.360	128	488645	22.256	ug/L	100
72) 1,2,3-Trichlorobenzene	15.549	180	241895	22.468	ug/L	97

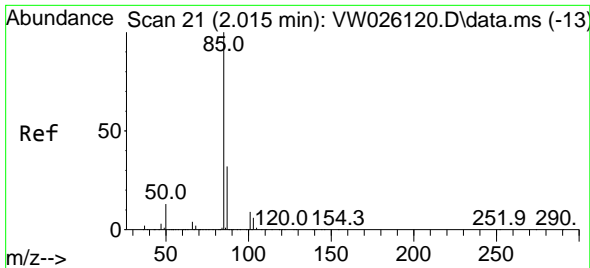
(#) = qualifier out of range (m) = manual integration (+) = signals summed

Data Path : Z:\voasrv\HPCHEM1\MSVOA_W\Data\VW060723\
 Data File : VW026126.D
 Acq On : 07 Jun 2023 16:11
 Operator : SY/MD
 Sample : VSTDC025EC
 Misc : 5.00g/10mL/MSVOA_W/SOIL
 ALS Vial : 1 Sample Multiplier: 1

Instrument :
 MSVOA_W
 ClientSampleId :
 VSTD025509

Quant Time: Jun 08 00:22:14 2023
 Quant Method : Z:\voasrv\HPCHEM1\MSVOA_W\Method\SFAMWLM053023SMA.M
 Quant Title : SFAM01.0
 QLast Update : Thu Jun 08 00:20:42 2023
 Response via : Initial Calibration

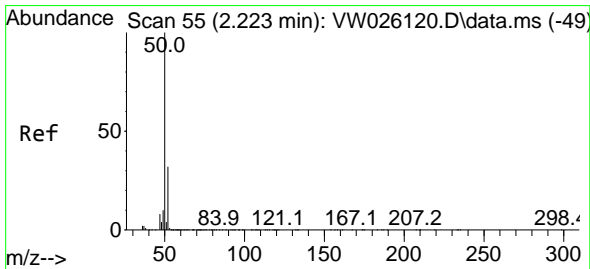
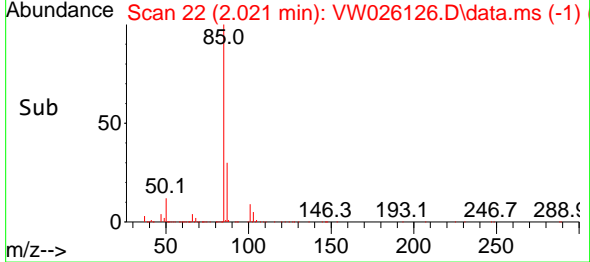
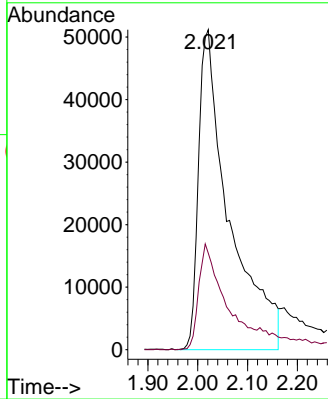
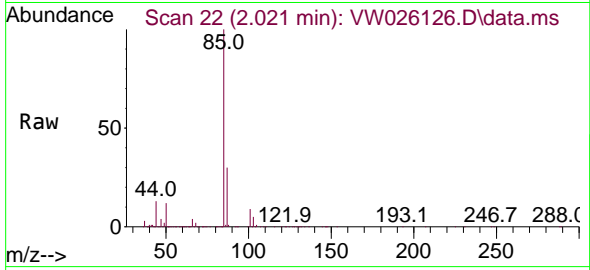




#2
 Dichlorodifluoromethane
 Concen: 24.202 ug/L
 RT: 2.021 min Scan# 21
 Delta R.T. 0.006 min
 Lab File: VW026126.D
 Acq: 07 Jun 2023 16:11

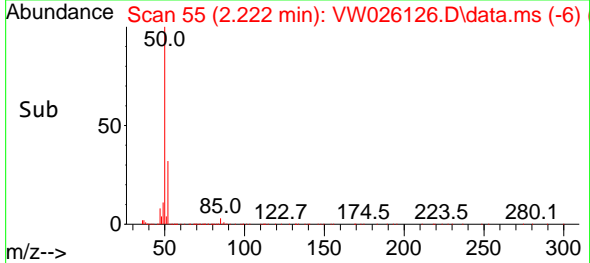
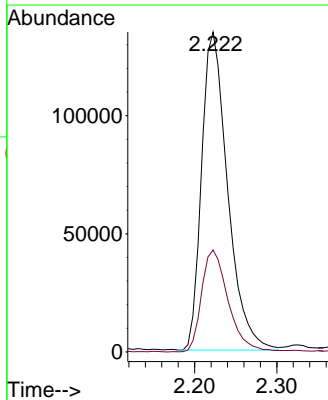
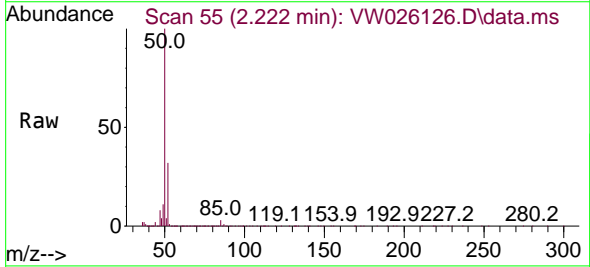
Instrument : MSVOA_W
 ClientSampleId : VSTD025509

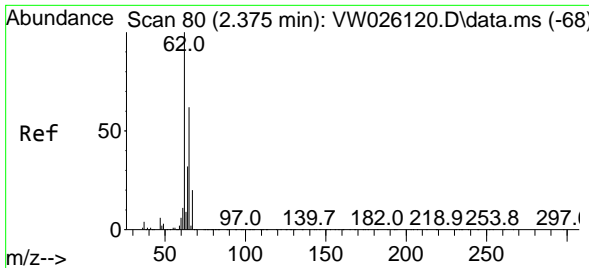
Tgt Ion: 85 Resp: 218203
 Ion Ratio Lower Upper
 85 100
 87 28.7 22.2 33.2



#3
 Chloromethane
 Concen: 25.621 ug/L
 RT: 2.222 min Scan# 55
 Delta R.T. -0.000 min
 Lab File: VW026126.D
 Acq: 07 Jun 2023 16:11

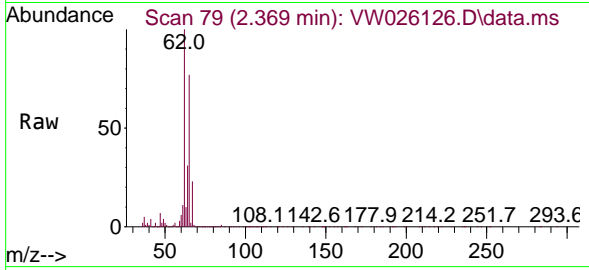
Tgt Ion: 50 Resp: 296188
 Ion Ratio Lower Upper
 50 100
 52 31.8 21.3 39.6



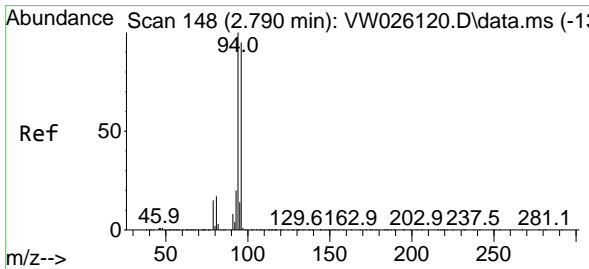
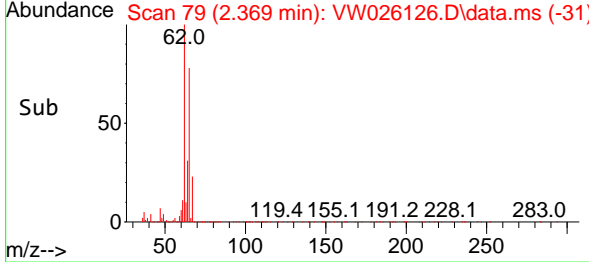
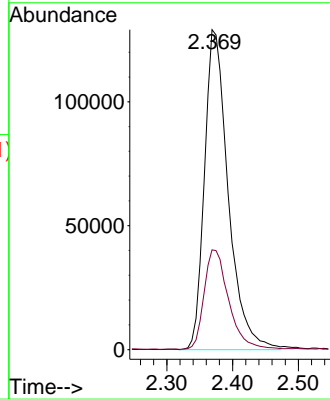


#5
 Vinyl chloride
 Concen: 26.281 ug/L
 RT: 2.369 min Scan# 79
 Delta R.T. -0.006 min
 Lab File: VW026126.D
 Acq: 07 Jun 2023 16:11

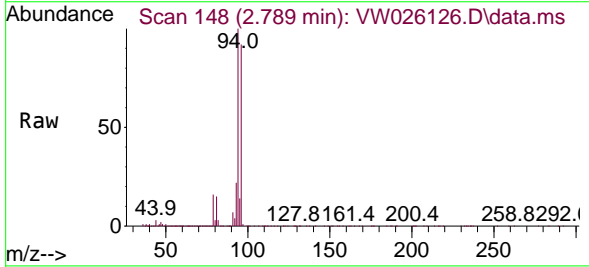
Instrument :
 MSVOA_W
 ClientSampleId :
 VSTD025509



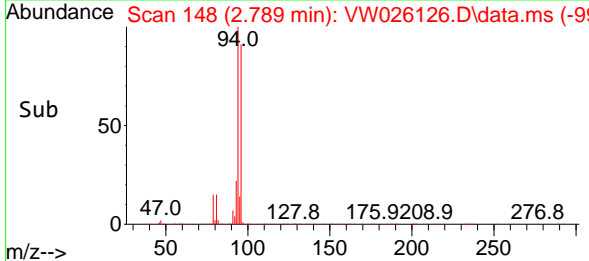
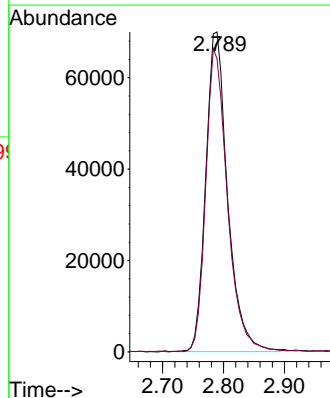
Tgt Ion: 62 Resp: 324756
 Ion Ratio Lower Upper
 62 100
 64 31.2 22.7 42.1

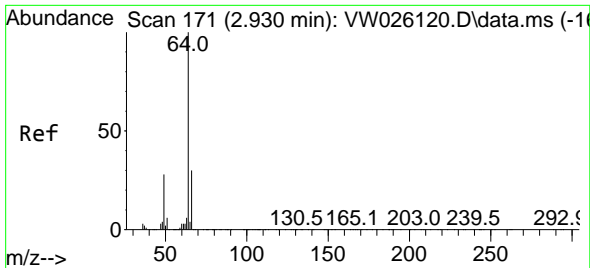


#6
 Bromomethane
 Concen: 25.876 ug/L
 RT: 2.789 min Scan# 148
 Delta R.T. -0.000 min
 Lab File: VW026126.D
 Acq: 07 Jun 2023 16:11



Tgt Ion: 94 Resp: 174312
 Ion Ratio Lower Upper
 94 100
 96 91.6 64.2 119.2

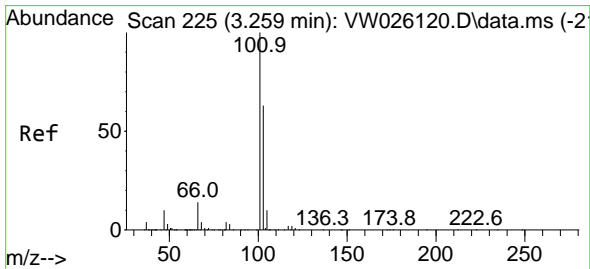
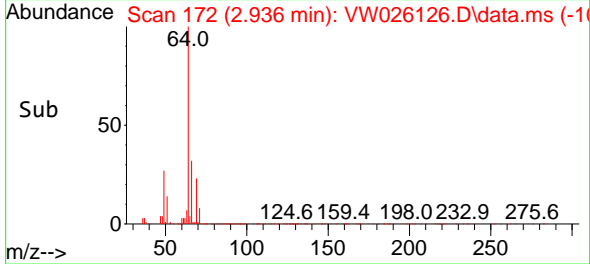
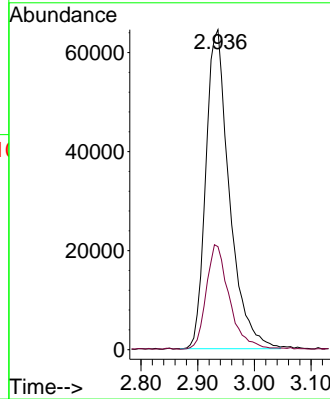
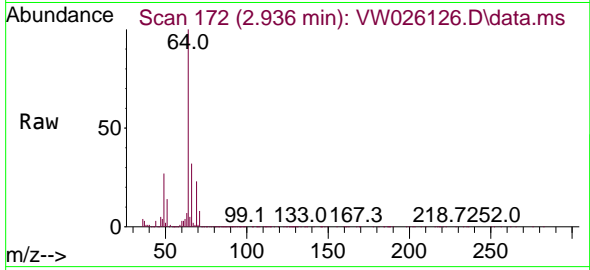




#8
 Chloroethane
 Concen: 27.876 ug/L
 RT: 2.936 min Scan# 171
 Delta R.T. 0.006 min
 Lab File: VW026126.D
 Acq: 07 Jun 2023 16:11

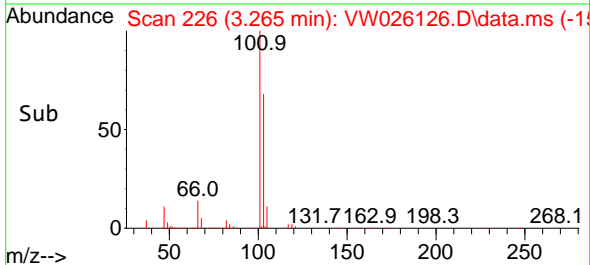
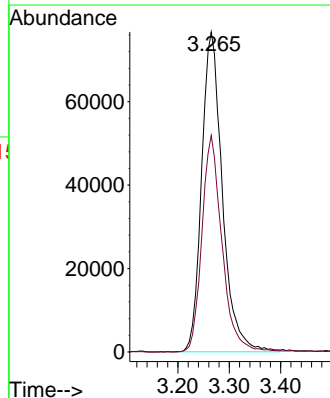
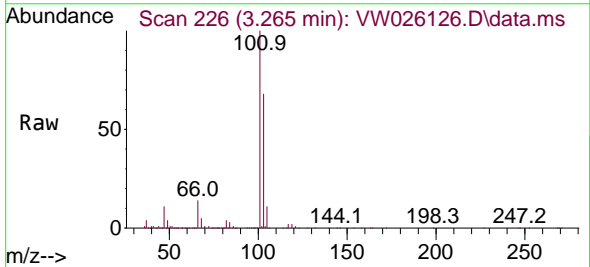
Instrument : MSVOA_W
 ClientSampleId : VSTD025509

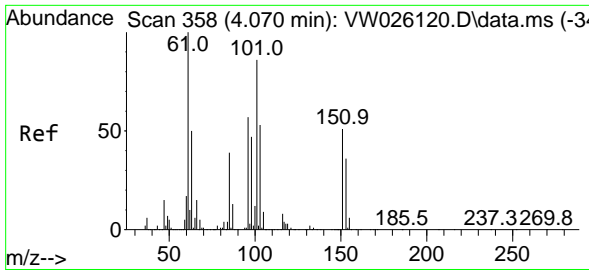
Tgt Ion: 64 Resp: 186147
 Ion Ratio Lower Upper
 64 100
 66 32.2 23.2 43.2



#9
 Trichlorofluoromethane
 Concen: 26.981 ug/L
 RT: 3.265 min Scan# 226
 Delta R.T. 0.006 min
 Lab File: VW026126.D
 Acq: 07 Jun 2023 16:11

Tgt Ion: 101 Resp: 214494
 Ion Ratio Lower Upper
 101 100
 103 65.3 51.6 77.4



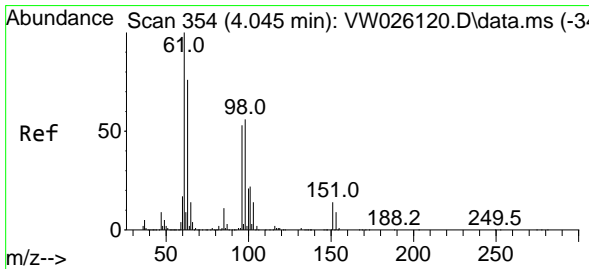
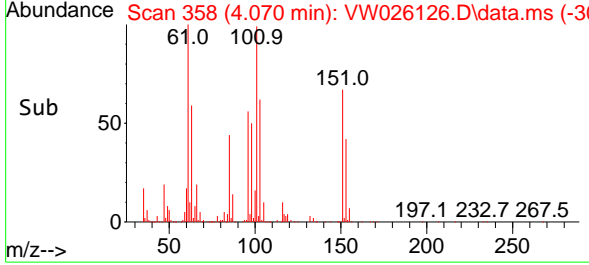
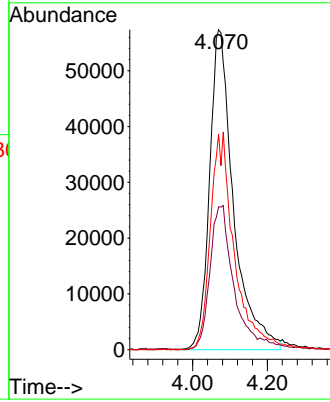
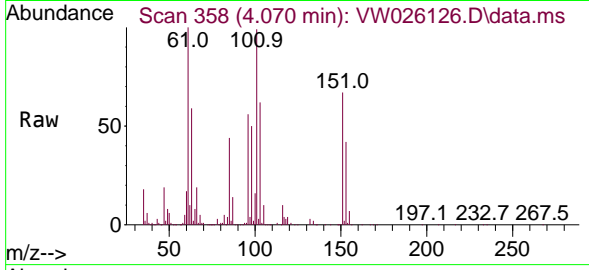


#10
 1,1,2-Trichloro-1,2,2-trifluoroethane
 Concen: 25.453 ug/L
 RT: 4.070 min Scan# 311
 Delta R.T. -0.000 min
 Lab File: VW026126.D
 Acq: 07 Jun 2023 16:11

Instrument : MSVOA_W
 ClientSampleId : VSTD025509

Tgt Ion:101 Resp: 255328

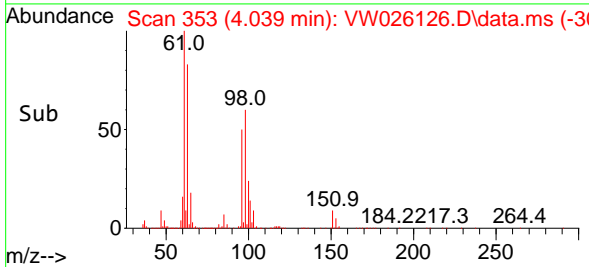
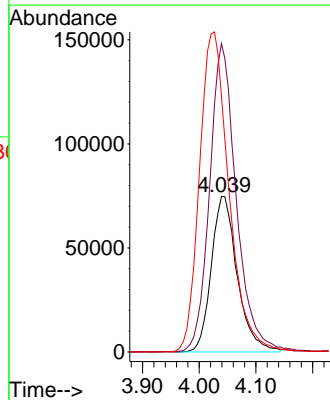
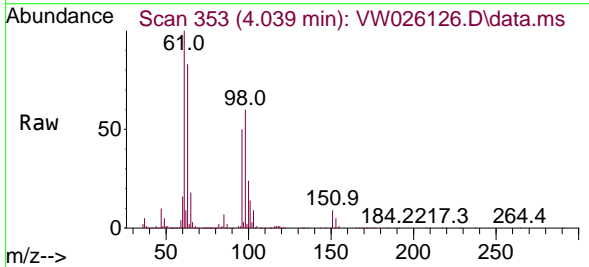
Ion	Ratio	Lower	Upper
101	100		
85	43.3	36.1	54.1
151	31.2	55.1	82.7#

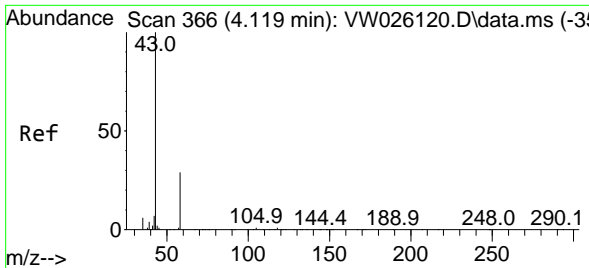


#12
 1,1-Dichloroethene
 Concen: 25.391 ug/L
 RT: 4.039 min Scan# 353
 Delta R.T. -0.006 min
 Lab File: VW026126.D
 Acq: 07 Jun 2023 16:11

Tgt Ion: 96 Resp: 237765

Ion	Ratio	Lower	Upper
96	100		
61	198.5	140.6	261.0
63	164.4	131.7	244.5

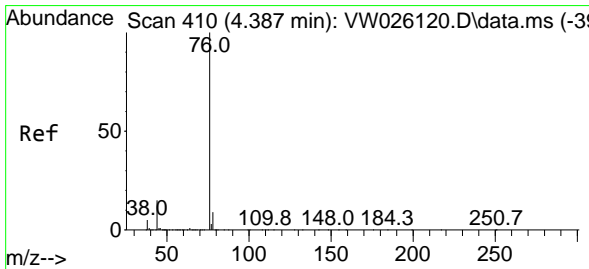
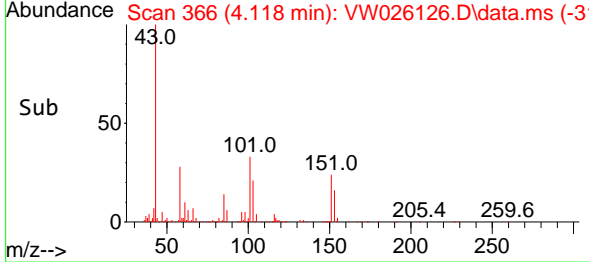
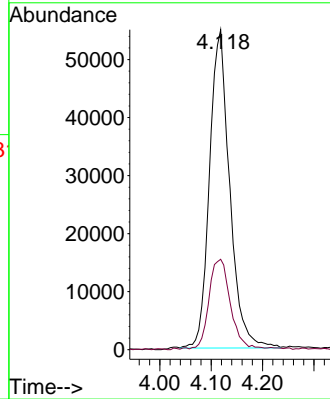
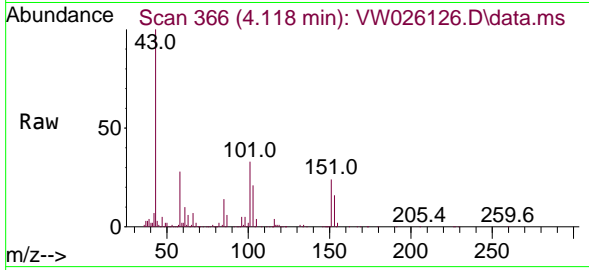




#13
 Acetone
 Concen: 64.142 ug/L
 RT: 4.118 min Scan# 301
 Delta R.T. -0.000 min
 Lab File: VW026126.D
 Acq: 07 Jun 2023 16:11

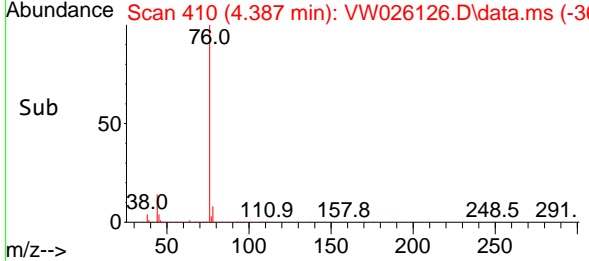
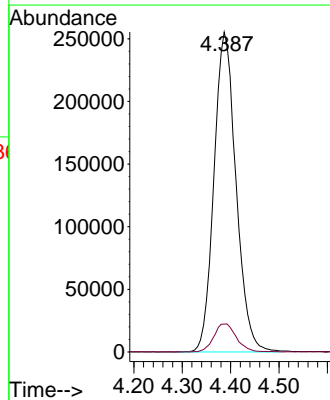
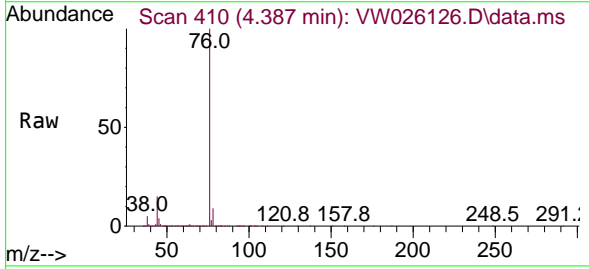
Instrument : MSVOA_W
 ClientSampleId : VSTD025509

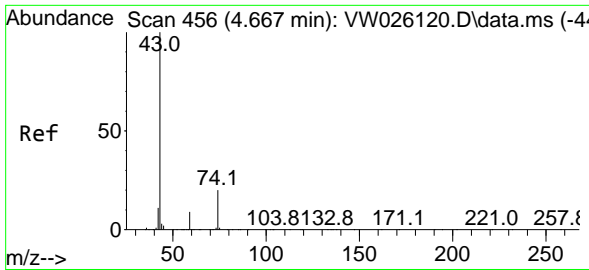
Tgt Ion: 43 Resp: 149502
 Ion Ratio Lower Upper
 43 100
 58 29.1 0.0 58.2



#14
 Carbon disulfide
 Concen: 24.446 ug/L
 RT: 4.387 min Scan# 410
 Delta R.T. -0.000 min
 Lab File: VW026126.D
 Acq: 07 Jun 2023 16:11

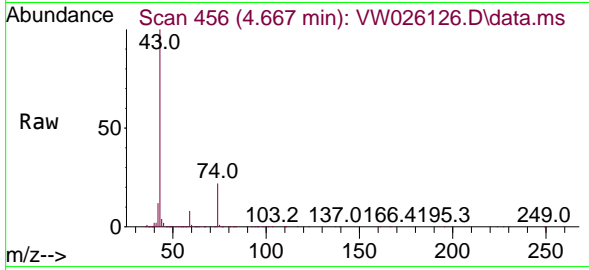
Tgt Ion: 76 Resp: 808092
 Ion Ratio Lower Upper
 76 100
 78 8.7 7.2 10.8



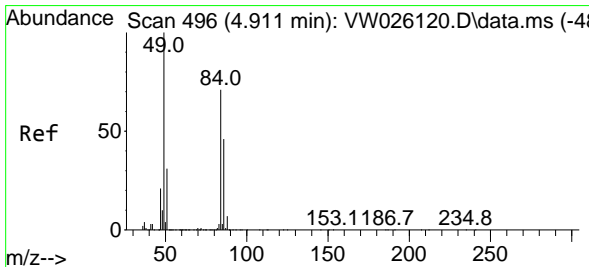
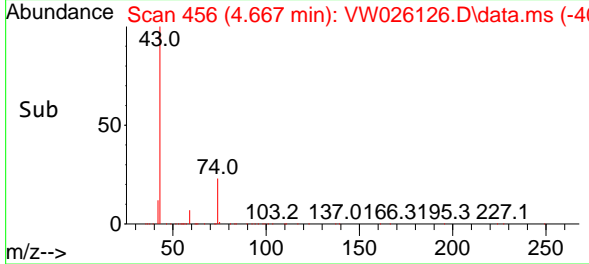
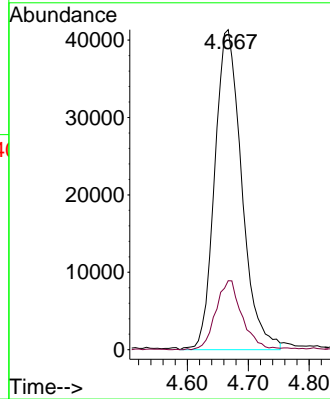


#15
 Methyl Acetate
 Concen: 24.299 ug/L
 RT: 4.667 min Scan# 456
 Delta R.T. -0.000 min
 Lab File: VW026126.D
 Acq: 07 Jun 2023 16:11

Instrument : MSVOA_W
 ClientSampleId : VSTD025509

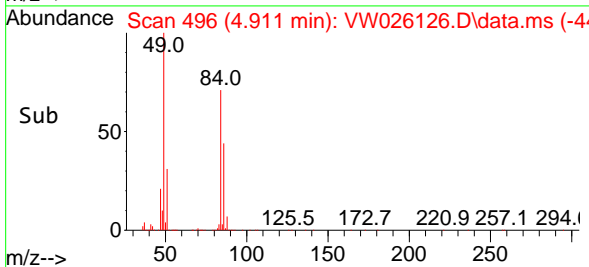
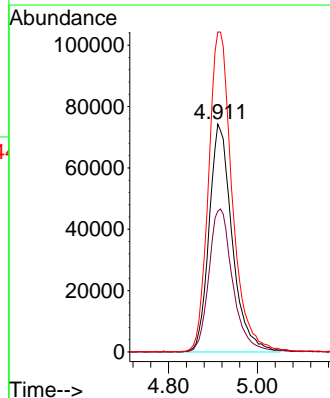
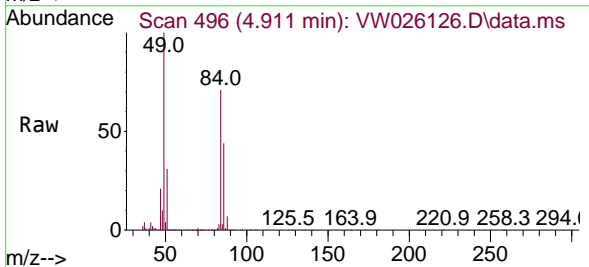


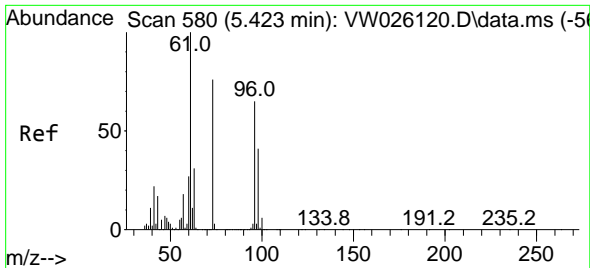
Tgt Ion: 43 Resp: 127113
 Ion Ratio Lower Upper
 43 100
 74 20.7 16.6 25.0



#16
 Methylene chloride
 Concen: 22.846 ug/L
 RT: 4.911 min Scan# 496
 Delta R.T. -0.000 min
 Lab File: VW026126.D
 Acq: 07 Jun 2023 16:11

Tgt Ion: 84 Resp: 268176
 Ion Ratio Lower Upper
 84 100
 86 61.8 44.2 82.0
 49 140.5 98.8 183.6



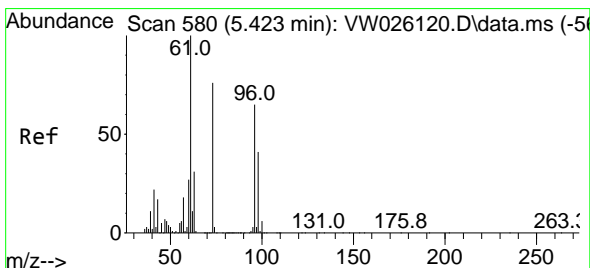
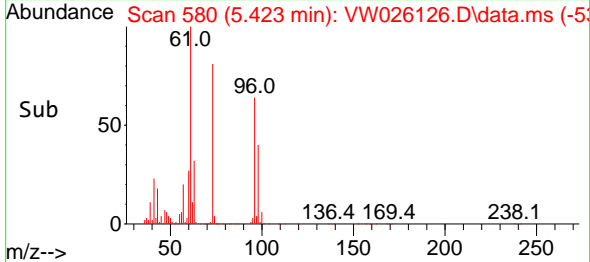
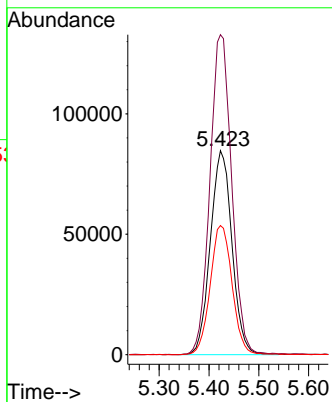
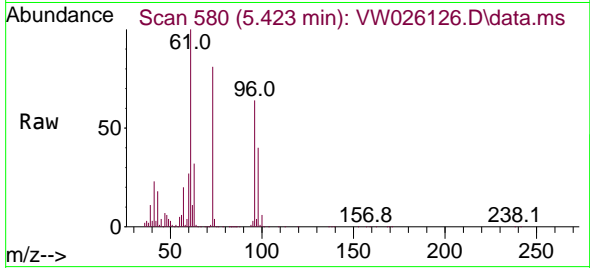


#17
 trans-1,2-Dichloroethene
 Concen: 24.342 ug/L
 RT: 5.423 min Scan# 580
 Delta R.T. -0.000 min
 Lab File: VW026126.D
 Acq: 07 Jun 2023 16:11

Instrument : MSVOA_W
 ClientSampleId : VSTD025509

Tgt Ion: 96 Resp: 255748

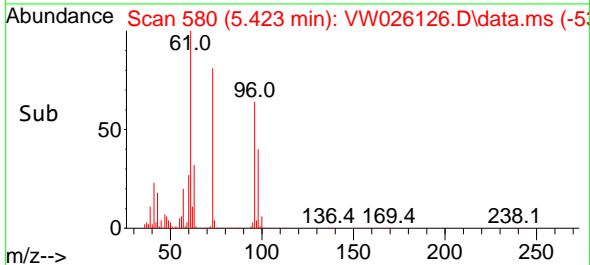
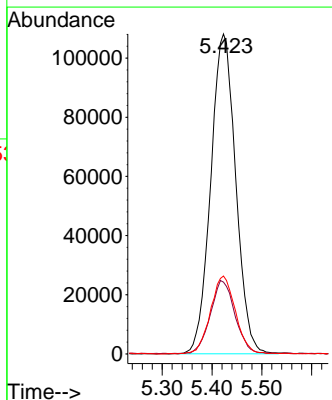
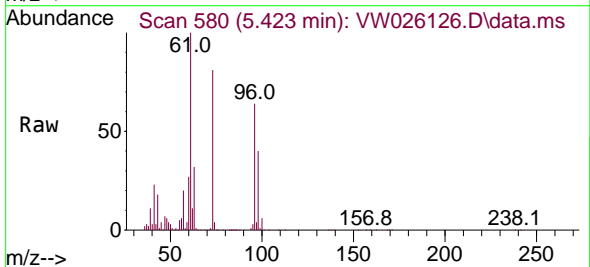
Ion	Ratio	Lower	Upper
96	100		
61	156.9	113.0	209.8
98	63.3	42.5	78.9

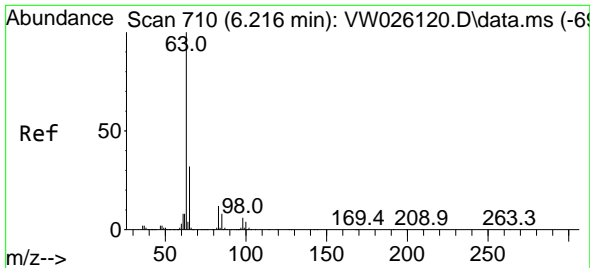


#18
 Methyl tert-butyl Ether
 Concen: 22.719 ug/L
 RT: 5.423 min Scan# 580
 Delta R.T. -0.000 min
 Lab File: VW026126.D
 Acq: 07 Jun 2023 16:11

Tgt Ion: 73 Resp: 376194

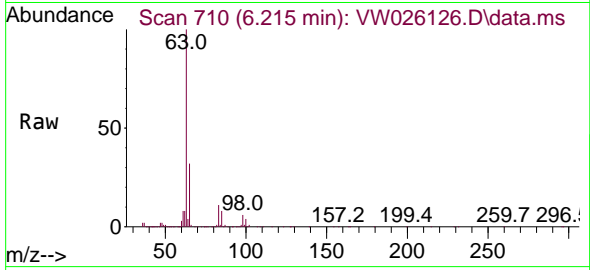
Ion	Ratio	Lower	Upper
73	100		
43	22.3	17.8	26.6
57	24.1	18.9	28.3





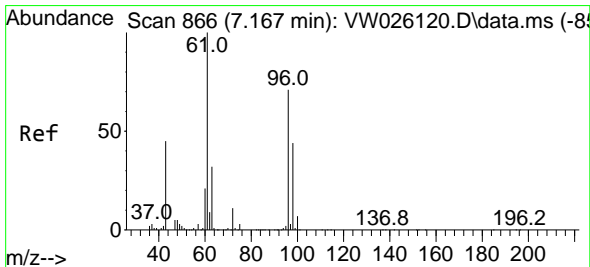
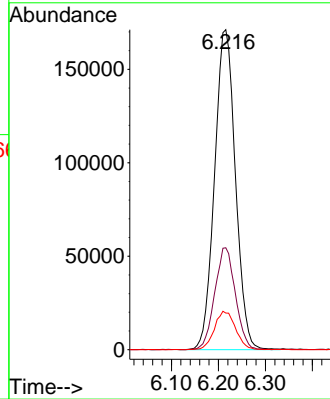
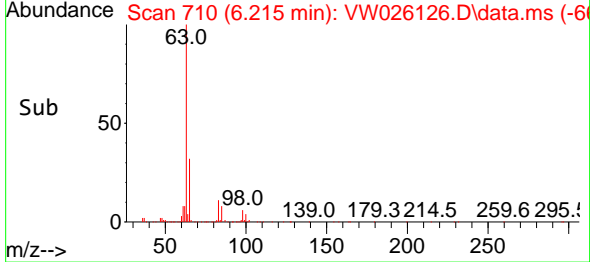
#19
 1,1-Dichloroethane
 Concen: 24.689 ug/L
 RT: 6.215 min Scan# 710
 Delta R.T. -0.000 min
 Lab File: VW026126.D
 Acq: 07 Jun 2023 16:11

Instrument : MSVOA_W
 ClientSampleId : VSTD025509

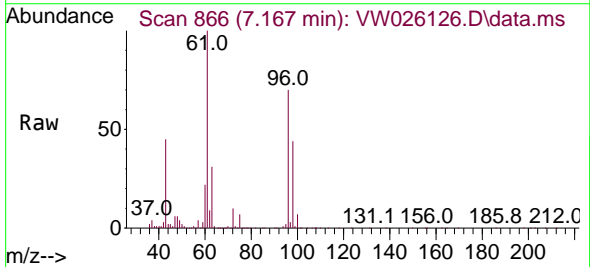


Tgt Ion: 63 Resp: 528070

Ion	Ratio	Lower	Upper
63	100		
65	31.9	22.3	41.5
83	11.5	9.1	16.9

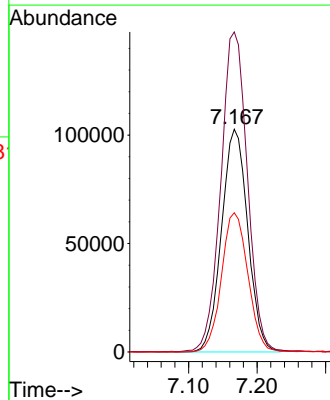
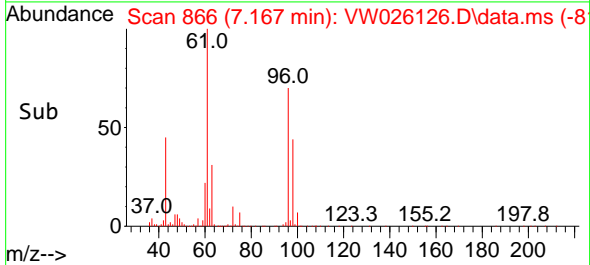


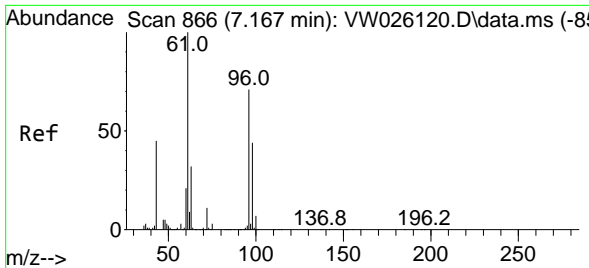
#20
 cis-1,2-Dichloroethene
 Concen: 24.508 ug/L
 RT: 7.167 min Scan# 866
 Delta R.T. -0.000 min
 Lab File: VW026126.D
 Acq: 07 Jun 2023 16:11



Tgt Ion: 96 Resp: 272747

Ion	Ratio	Lower	Upper
96	100		
61	143.7	98.4	182.8
98	62.5	45.2	84.0

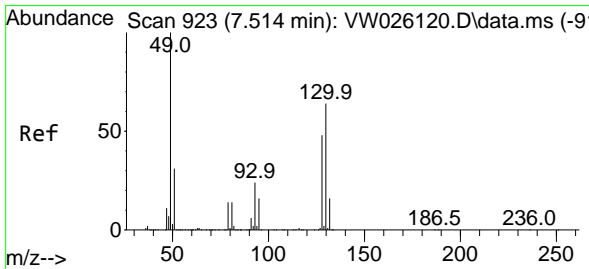
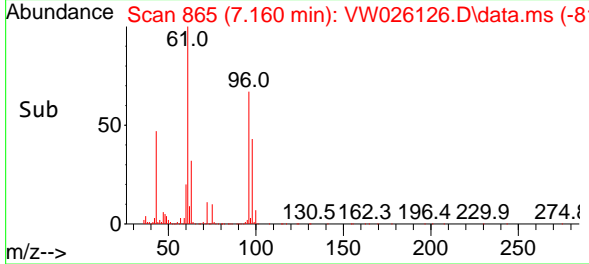
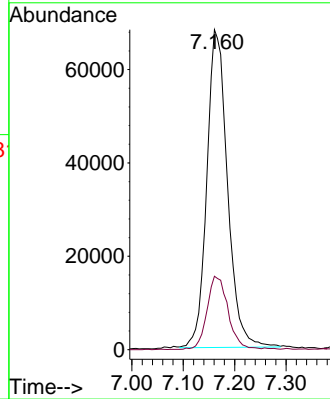
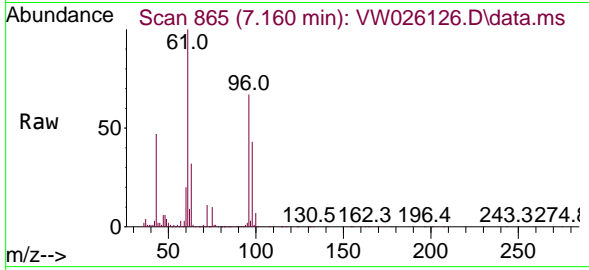




#22
 2-Butanone
 Concen: 57.162 ug/L
 RT: 7.160 min Scan# 866
 Delta R.T. -0.006 min
 Lab File: VW026126.D
 Acq: 07 Jun 2023 16:11

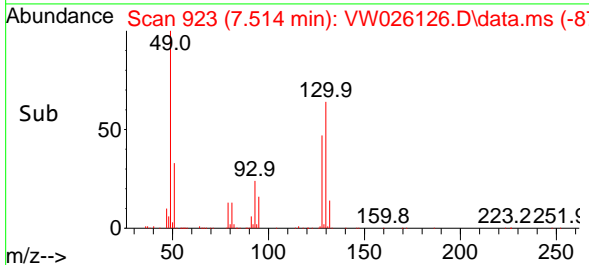
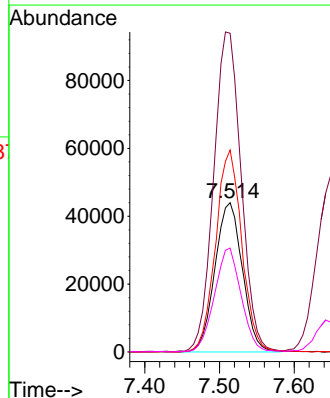
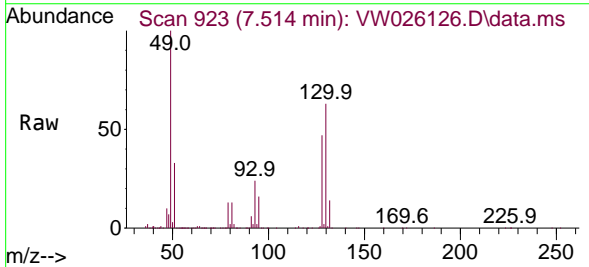
Instrument : MSVOA_W
 ClientSampleId : VSTD025509

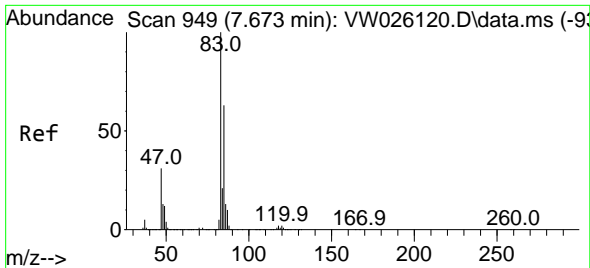
Tgt Ion: 43 Resp: 190052
 Ion Ratio Lower Upper
 43 100
 72 23.4 12.4 37.4



#23
 Bromochloromethane
 Concen: 23.659 ug/L
 RT: 7.514 min Scan# 923
 Delta R.T. -0.000 min
 Lab File: VW026126.D
 Acq: 07 Jun 2023 16:11

Tgt Ion:128 Resp: 112290
 Ion Ratio Lower Upper
 128 100
 49 213.4 140.6 261.0
 130 135.2 86.0 159.6
 51 69.5 53.6 80.4

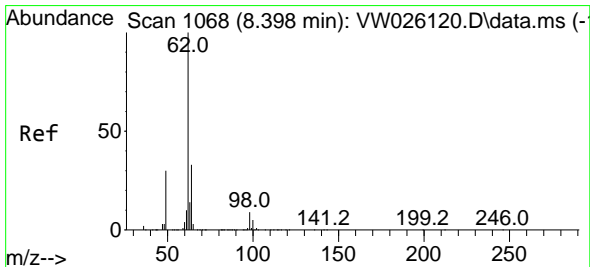
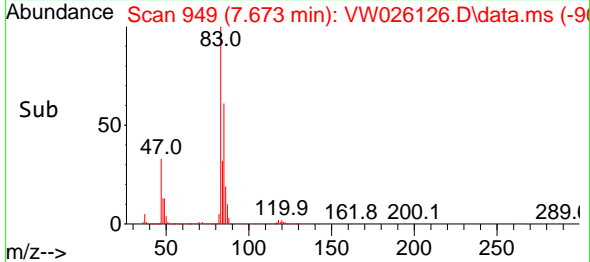
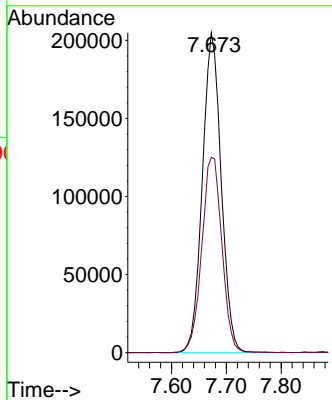
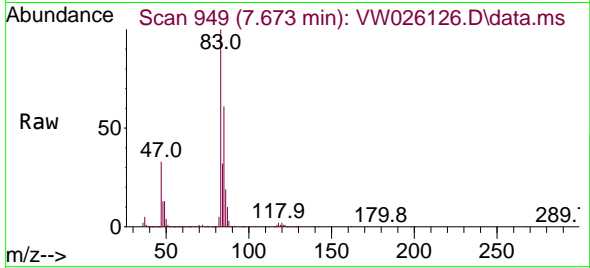




#25
 Chloroform
 Concen: 24.487 ug/L
 RT: 7.673 min Scan# 949
 Delta R.T. -0.000 min
 Lab File: VW026126.D
 Acq: 07 Jun 2023 16:11

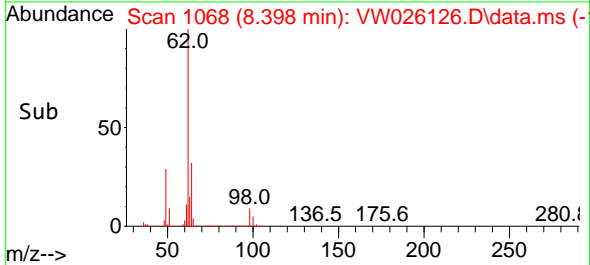
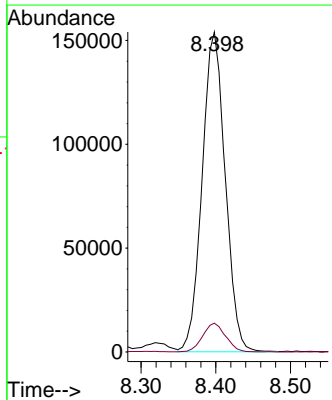
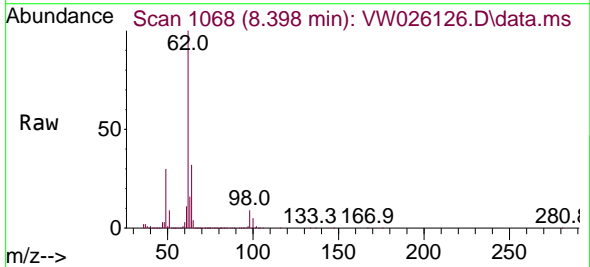
Instrument : MSVOA_W
 ClientSampleId : VSTD025509

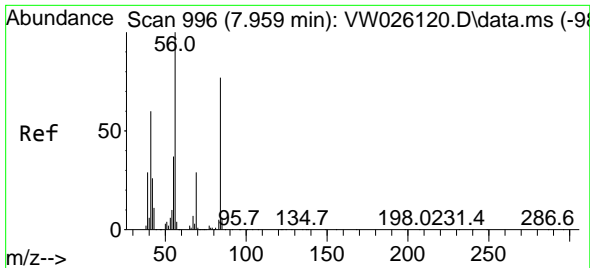
Tgt Ion: 83 Resp: 487822
 Ion Ratio Lower Upper
 83 100
 85 61.1 45.1 83.7



#27
 1,2-Dichloroethane
 Concen: 24.088 ug/L
 RT: 8.398 min Scan# 1068
 Delta R.T. -0.000 min
 Lab File: VW026126.D
 Acq: 07 Jun 2023 16:11

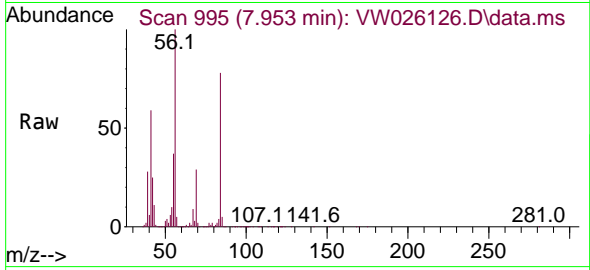
Tgt Ion: 62 Resp: 330973
 Ion Ratio Lower Upper
 62 100
 98 9.0 7.4 11.2





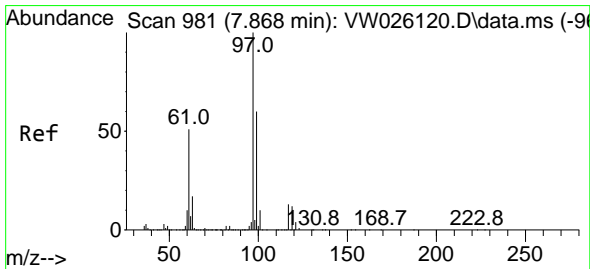
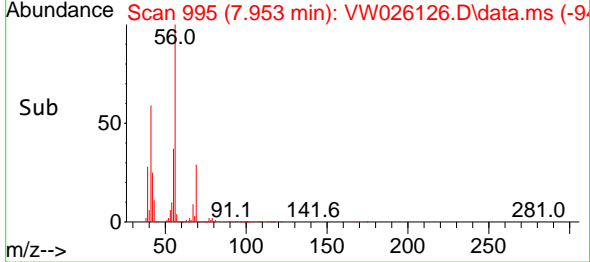
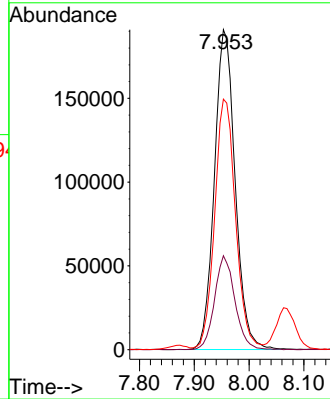
#29
 Cyclohexane
 Concen: 24.593 ug/L
 RT: 7.953 min Scan# 995
 Delta R.T. -0.006 min
 Lab File: VW026126.D
 Acq: 07 Jun 2023 16:11

Instrument : MSVOA_W
 ClientSampleId : VSTD025509

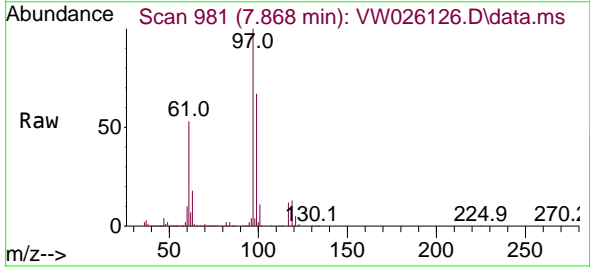


Tgt Ion: 56 Resp: 502538

Ion	Ratio	Lower	Upper
56	100		
69	28.6	23.3	34.9
84	79.0	63.0	94.6

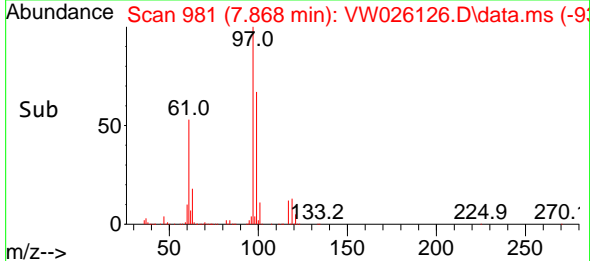
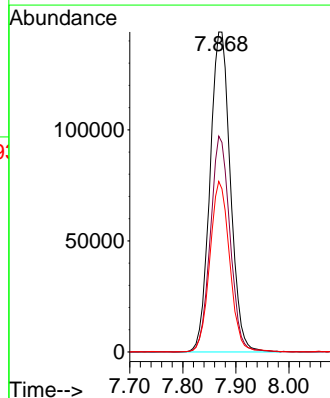


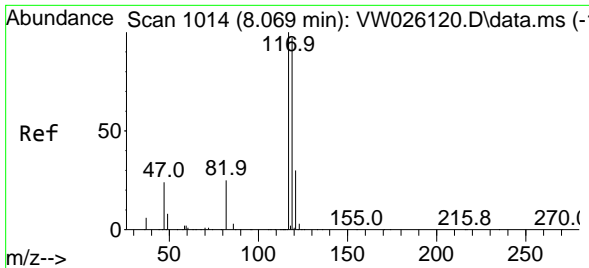
#30
 1,1,1-Trichloroethane
 Concen: 23.962 ug/L
 RT: 7.868 min Scan# 981
 Delta R.T. -0.000 min
 Lab File: VW026126.D
 Acq: 07 Jun 2023 16:11



Tgt Ion: 97 Resp: 384879

Ion	Ratio	Lower	Upper
97	100		
99	65.1	50.6	76.0
61	51.6	40.5	60.7

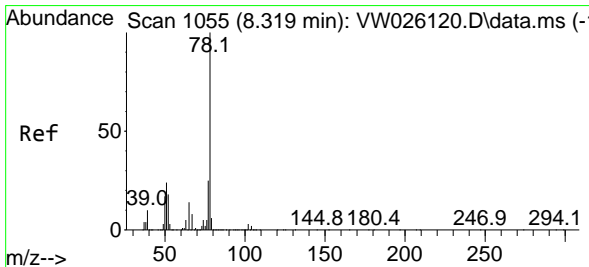
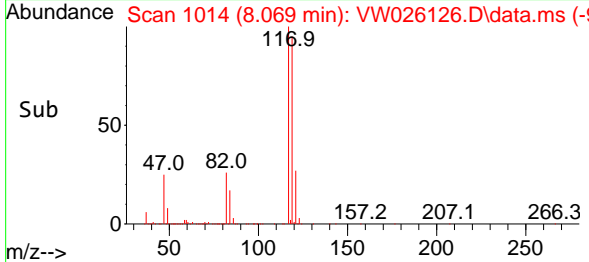
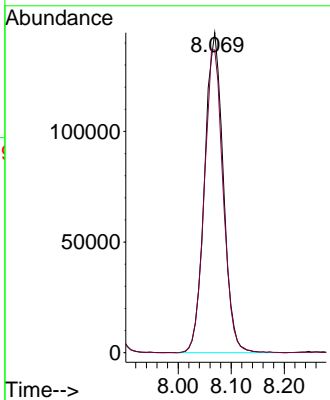
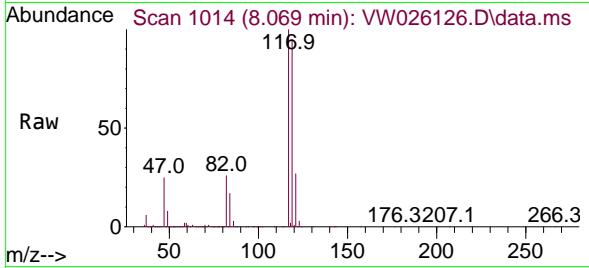




#31
 Carbon tetrachloride
 Concen: 24.114 ug/L
 RT: 8.069 min Scan# 1014
 Delta R.T. -0.000 min
 Lab File: VW026126.D
 Acq: 07 Jun 2023 16:11

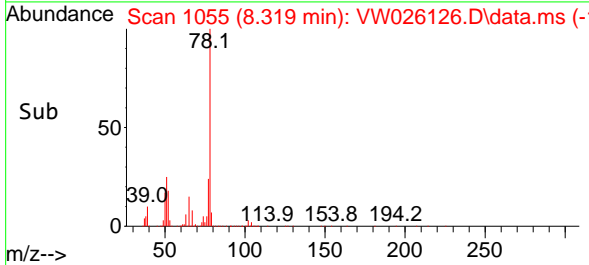
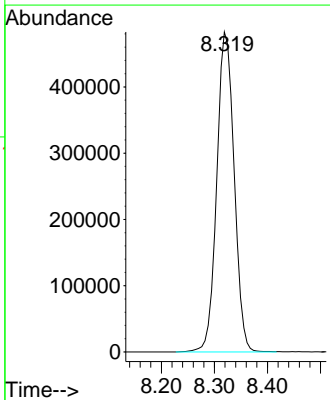
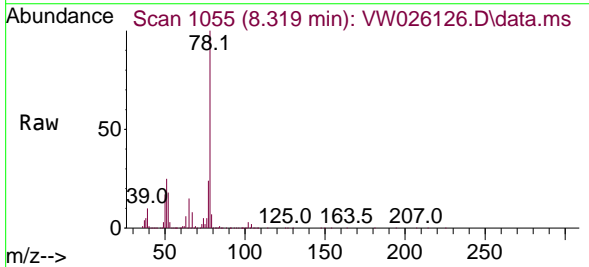
Instrument : MSVOA_W
 ClientSampleId : VSTD025509

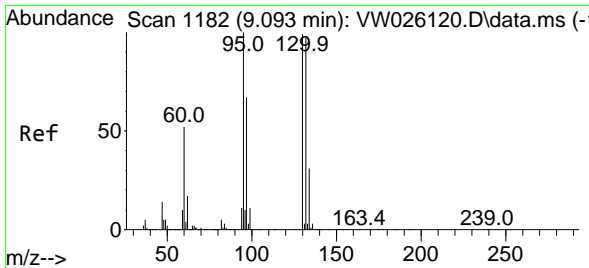
Tgt Ion:117 Resp: 353439
 Ion Ratio Lower Upper
 117 100
 119 95.7 77.4 116.2



#33
 Benzene
 Concen: 24.284 ug/L
 RT: 8.319 min Scan# 1055
 Delta R.T. -0.000 min
 Lab File: VW026126.D
 Acq: 07 Jun 2023 16:11

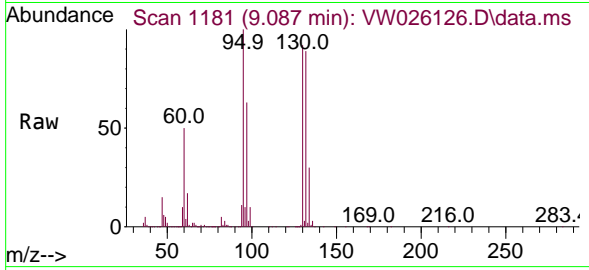
Tgt Ion: 78 Resp: 1101050





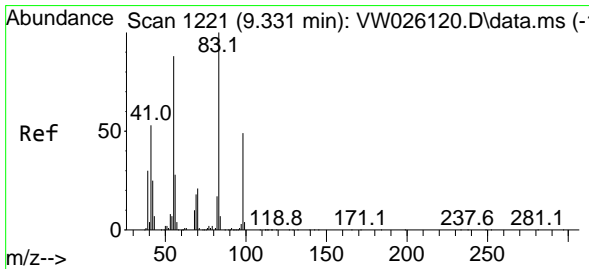
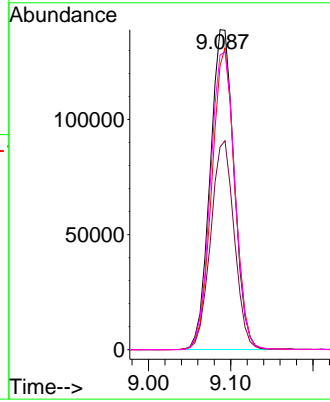
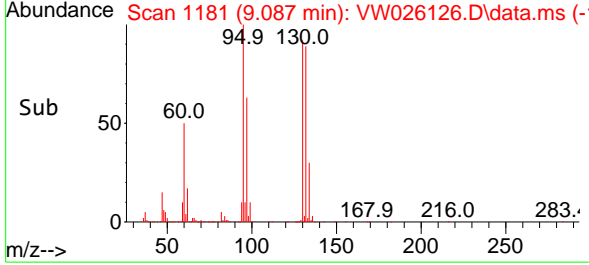
#34
 Trichloroethene
 Concen: 24.247 ug/L
 RT: 9.087 min Scan# 1182
 Delta R.T. -0.006 min
 Lab File: VW026126.D
 Acq: 07 Jun 2023 16:11

Instrument : MSVOA_W
 ClientSampleId : VSTD025509

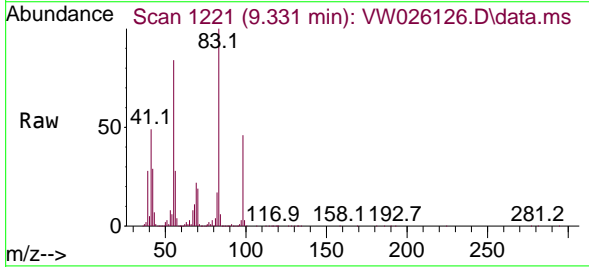


Tgt Ion: 95 Resp: 281508

Ion	Ratio	Lower	Upper
95	100		
97	63.3	45.9	85.3
132	88.8	67.1	124.7
130	92.1	68.0	126.2

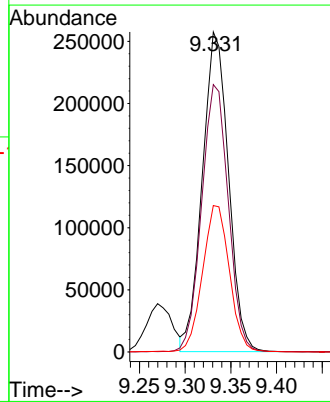
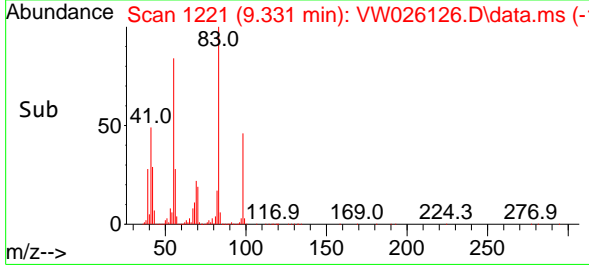


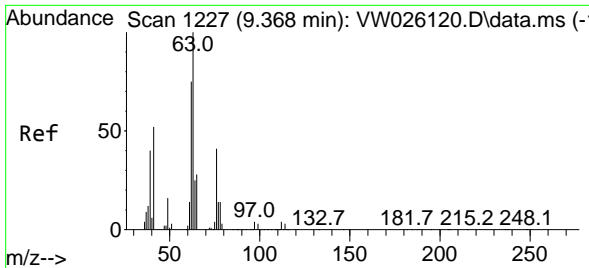
#35
 Methylcyclohexane
 Concen: 24.910 ug/L
 RT: 9.331 min Scan# 1221
 Delta R.T. -0.000 min
 Lab File: VW026126.D
 Acq: 07 Jun 2023 16:11



Tgt Ion: 83 Resp: 511748

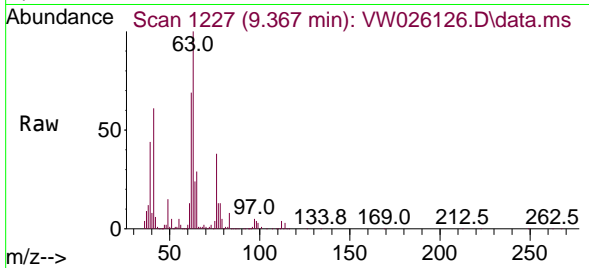
Ion	Ratio	Lower	Upper
83	100		
55	85.4	68.2	102.4
98	47.0	38.1	57.1



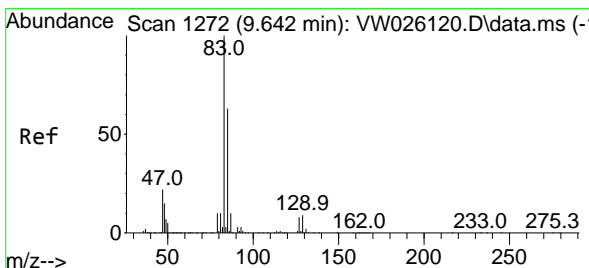
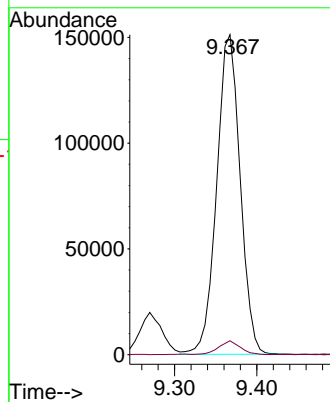
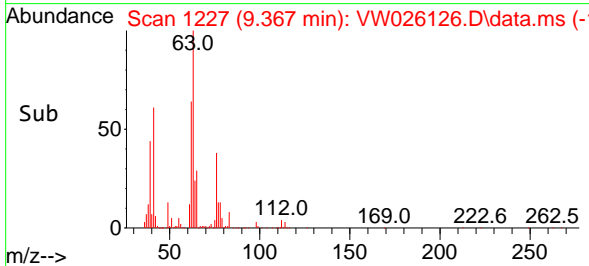


#37
 1,2-Dichloropropane
 Concen: 24.409 ug/L
 RT: 9.367 min Scan# 111
 Delta R.T. -0.000 min
 Lab File: VW026126.D
 Acq: 07 Jun 2023 16:11

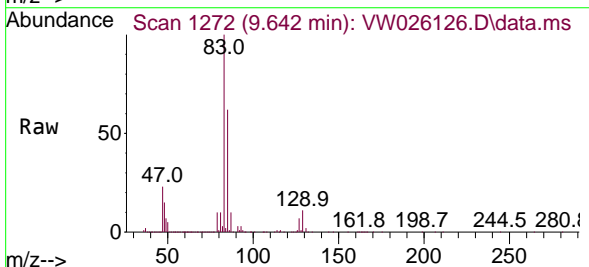
Instrument :
 MSVOA_W
 ClientSampleId :
 VSTD025509



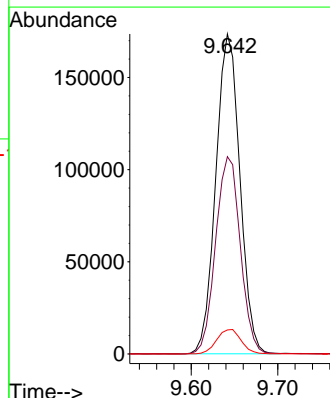
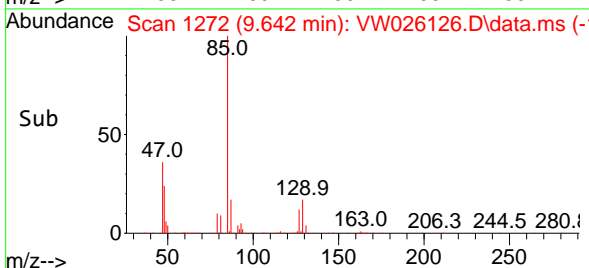
Tgt Ion: 63 Resp: 299759
 Ion Ratio Lower Upper
 63 100
 112 3.9 3.3 4.9

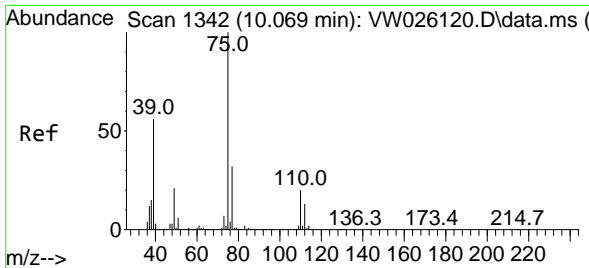


#38
 Bromodichloromethane
 Concen: 23.508 ug/L
 RT: 9.642 min Scan# 1272
 Delta R.T. -0.000 min
 Lab File: VW026126.D
 Acq: 07 Jun 2023 16:11



Tgt Ion: 83 Resp: 335401
 Ion Ratio Lower Upper
 83 100
 85 61.7 44.2 82.0
 127 7.5 6.2 9.2

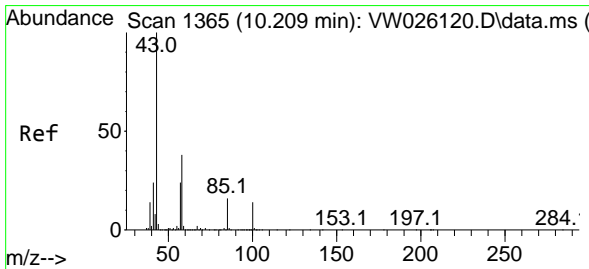
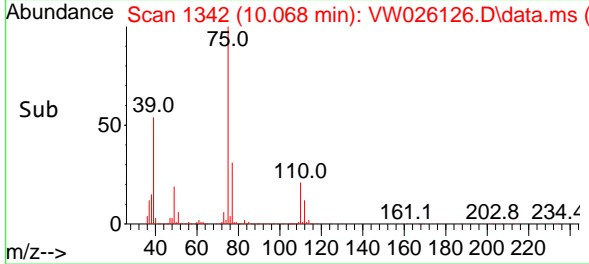
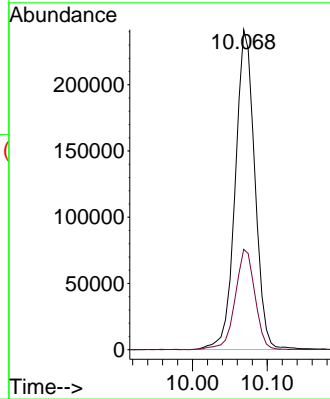
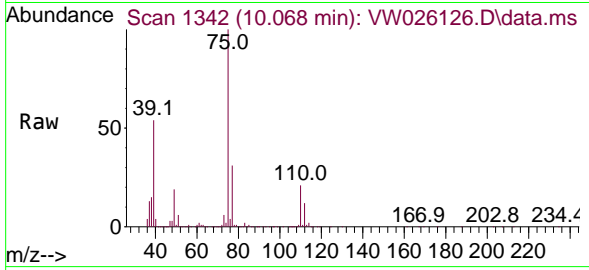




#39
 cis-1,3-Dichloropropene
 Concen: 24.234 ug/L
 RT: 10.068 min Scan# 11
 Delta R.T. -0.000 min
 Lab File: VW026126.D
 Acq: 07 Jun 2023 16:11

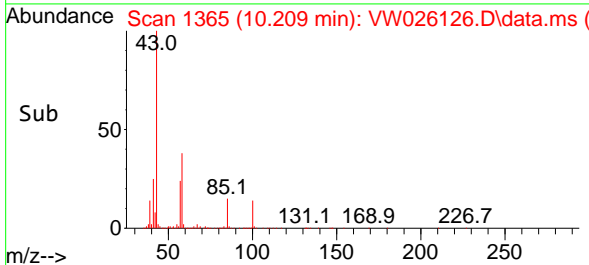
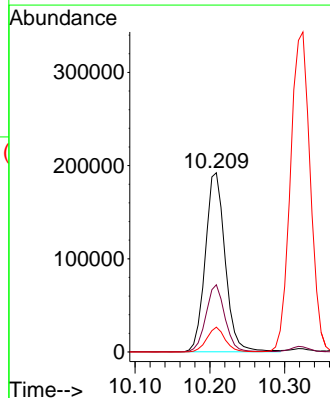
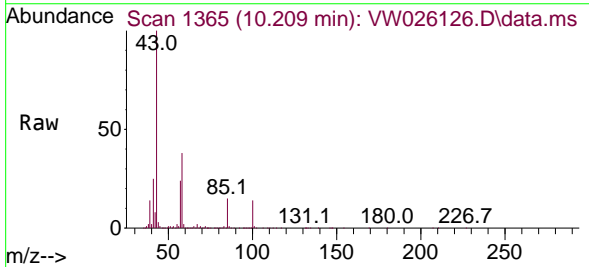
Instrument :
 MSVOA_W
 ClientSampleId :
 VSTD025509

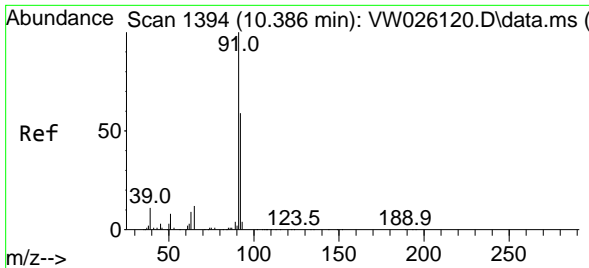
Tgt Ion: 75 Resp: 437357
 Ion Ratio Lower Upper
 75 100
 77 31.4 22.0 40.8



#40
 4-Methyl-2-pentanone
 Concen: 48.953 ug/L
 RT: 10.209 min Scan# 1365
 Delta R.T. -0.000 min
 Lab File: VW026126.D
 Acq: 07 Jun 2023 16:11

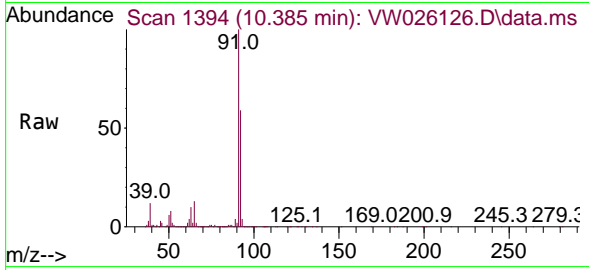
Tgt Ion: 43 Resp: 354435
 Ion Ratio Lower Upper
 43 100
 58 36.1 29.0 43.4
 100 12.9 10.5 15.7



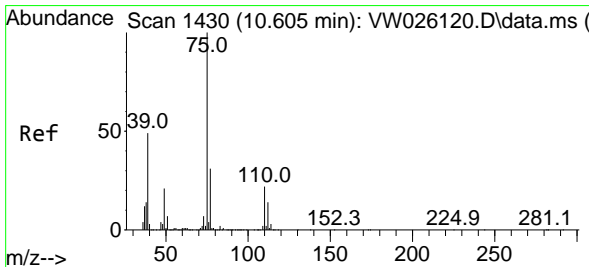
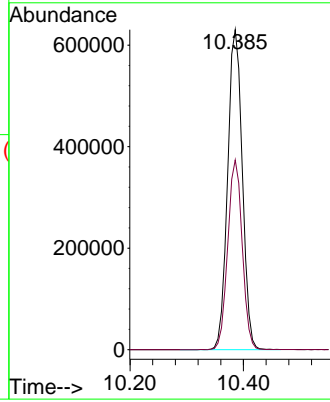
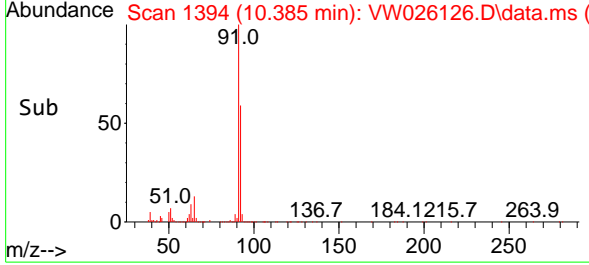


#42
 Toluene
 Concen: 24.377 ug/L
 RT: 10.385 min Scan# 11
 Delta R.T. -0.000 min
 Lab File: VW026126.D
 Acq: 07 Jun 2023 16:11

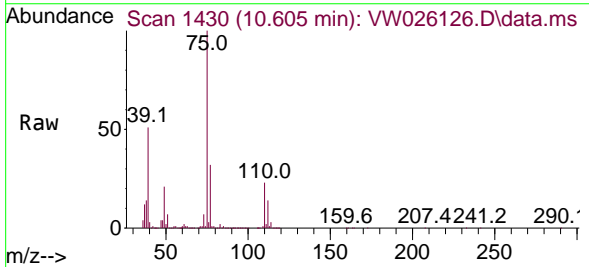
Instrument : MSVOA_W
 ClientSampleId : VSTD025509



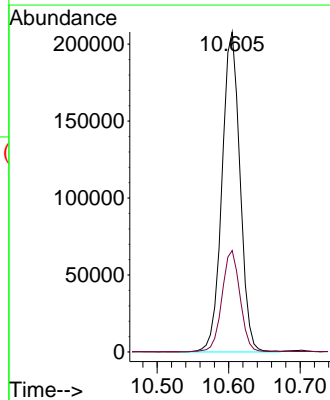
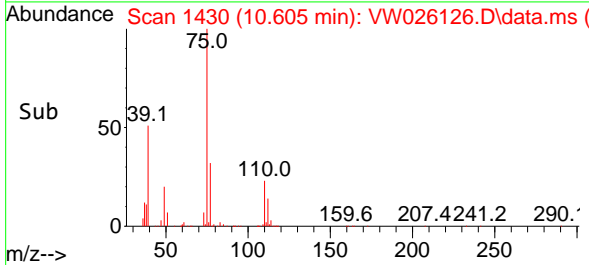
Tgt Ion: 91 Resp: 1130507
 Ion Ratio Lower Upper
 91 100
 92 59.3 42.2 78.4

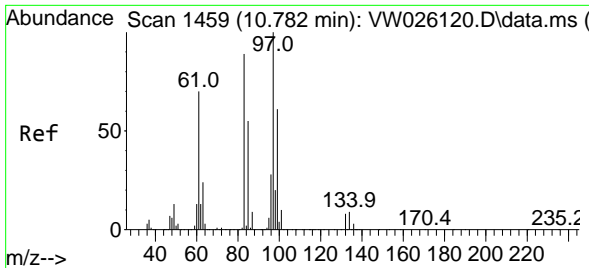


#44
 trans-1,3-Dichloropropene
 Concen: 24.212 ug/L
 RT: 10.605 min Scan# 1430
 Delta R.T. -0.000 min
 Lab File: VW026126.D
 Acq: 07 Jun 2023 16:11



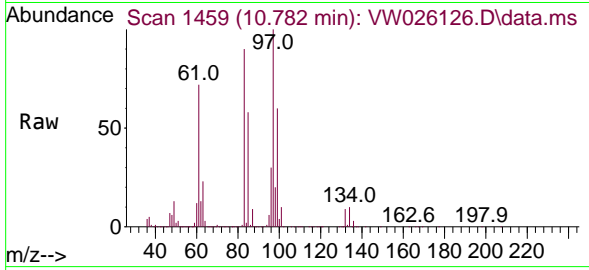
Tgt Ion: 75 Resp: 364025
 Ion Ratio Lower Upper
 75 100
 77 31.7 21.1 39.3





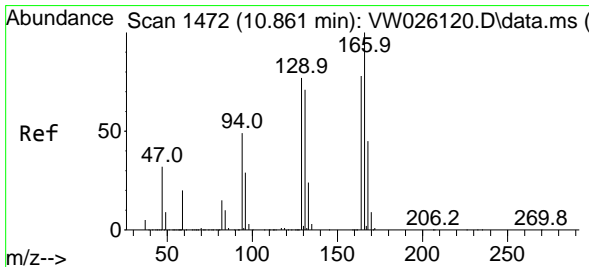
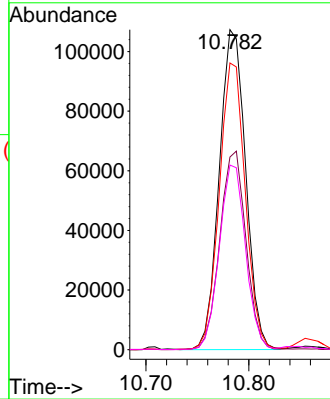
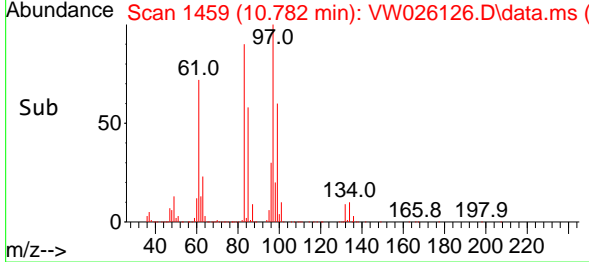
#45
 1,1,2-Trichloroethane
 Concen: 23.643 ug/L
 RT: 10.782 min Scan# 1459
 Delta R.T. -0.000 min
 Lab File: VW026126.D
 Acq: 07 Jun 2023 16:11

Instrument : MSVOA_W
 ClientSampleId : VSTD025509

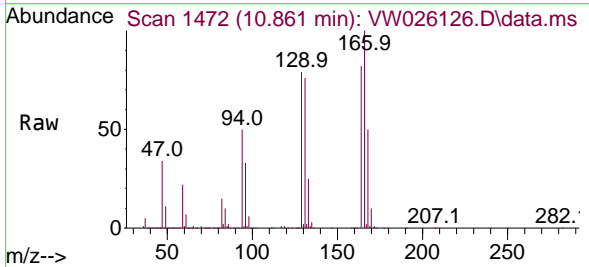


Tgt Ion: 97 Resp: 191358

Ion	Ratio	Lower	Upper
97	100		
99	60.2	43.3	80.5
83	89.6	62.9	116.9
85	57.7	40.1	74.5

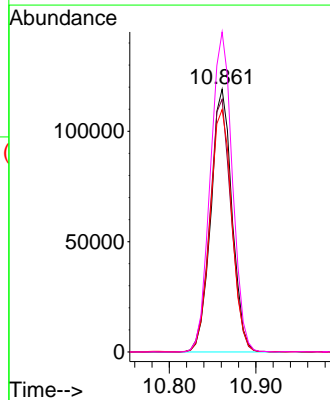
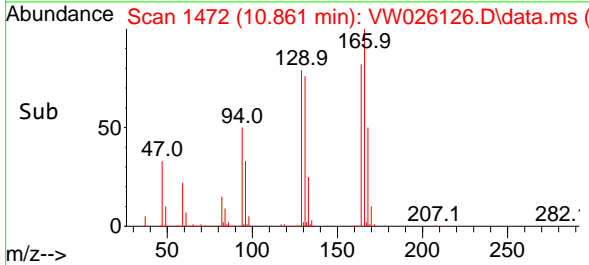


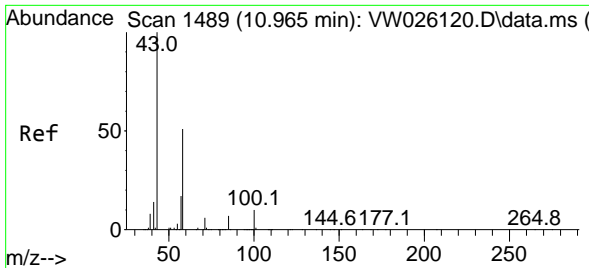
#46
 Tetrachloroethene
 Concen: 24.535 ug/L
 RT: 10.861 min Scan# 1472
 Delta R.T. -0.000 min
 Lab File: VW026126.D
 Acq: 07 Jun 2023 16:11



Tgt Ion: 164 Resp: 201481

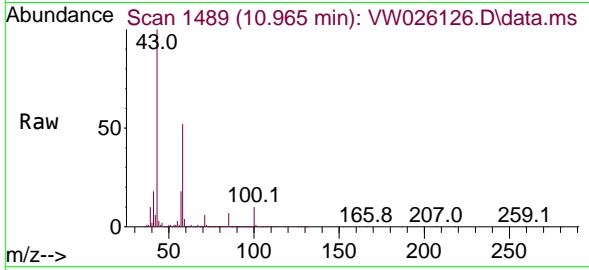
Ion	Ratio	Lower	Upper
164	100		
129	96.2	68.5	127.1
131	92.3	67.1	124.7
166	121.8	94.1	174.8





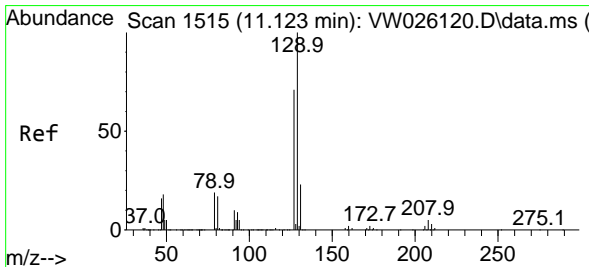
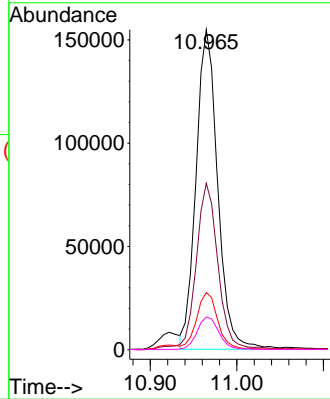
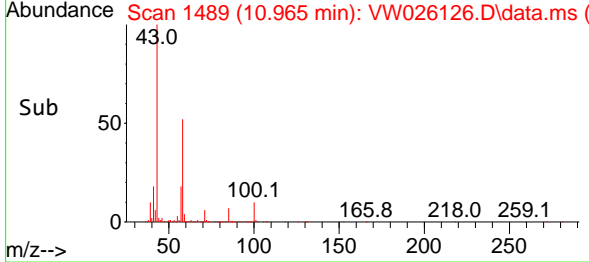
#48
 2-Hexanone
 Concen: 52.635 ug/L
 RT: 10.965 min Scan# 1489
 Delta R.T. -0.000 min
 Lab File: VW026126.D
 Acq: 07 Jun 2023 16:11

Instrument : MSVOA_W
 ClientSampleId : VSTD025509

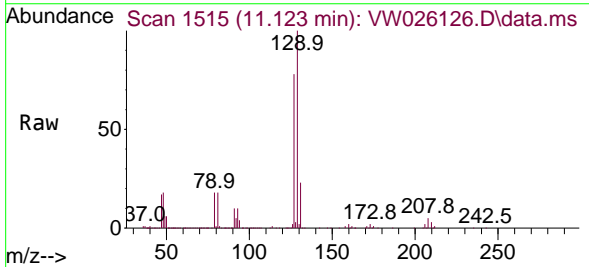


Tgt Ion: 43 Resp: 268711

Ion	Ratio	Lower	Upper
43	100		
58	52.3	42.2	63.2
57	17.3	14.2	21.2
100	10.3	8.3	12.5

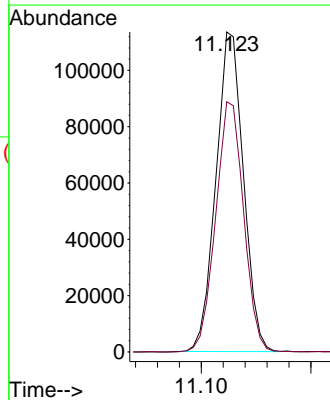
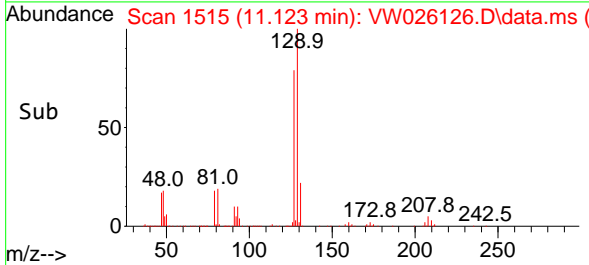


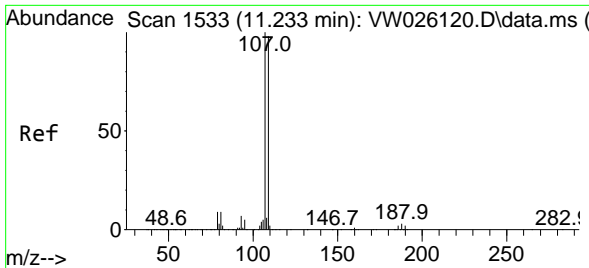
#49
 Dibromochloromethane
 Concen: 23.317 ug/L
 RT: 11.123 min Scan# 1515
 Delta R.T. -0.000 min
 Lab File: VW026126.D
 Acq: 07 Jun 2023 16:11



Tgt Ion: 129 Resp: 197864

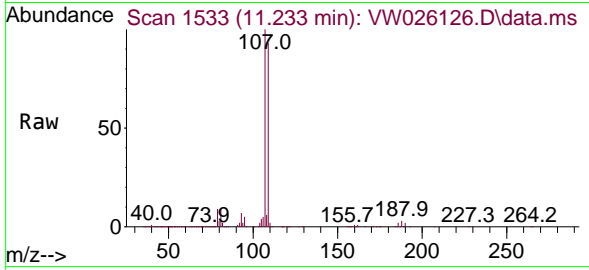
Ion	Ratio	Lower	Upper
129	100		
127	78.2	56.9	105.7



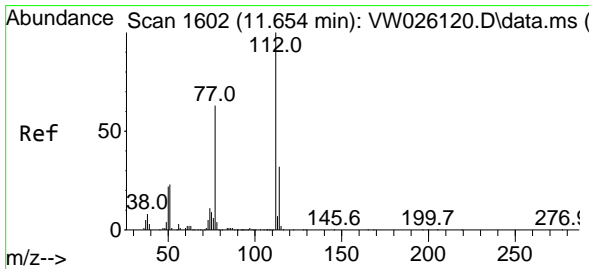
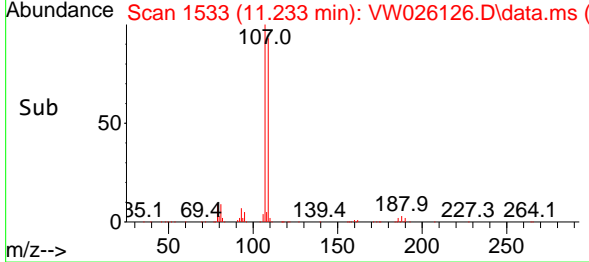
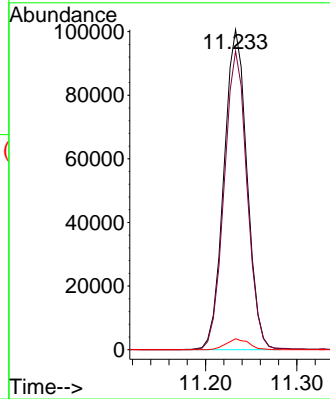


#50
 1,2-Dibromoethane
 Concen: 23.639 ug/L
 RT: 11.233 min Scan# 11
 Delta R.T. -0.000 min
 Lab File: VW026126.D
 Acq: 07 Jun 2023 16:11

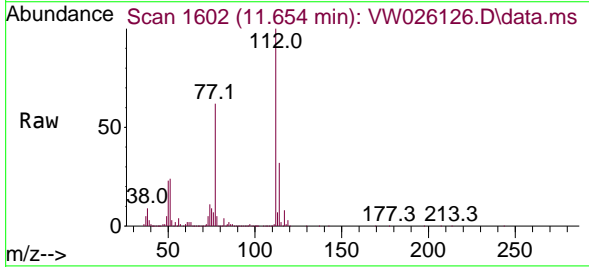
Instrument : MSVOA_W
 ClientSampleId : VSTD025509



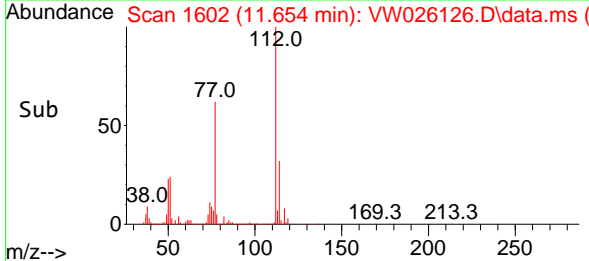
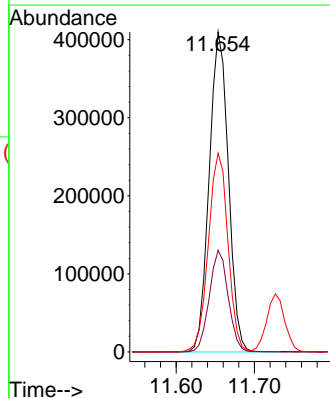
Tgt Ion:107 Resp: 177156
 Ion Ratio Lower Upper
 107 100
 109 93.4 64.0 119.0
 188 3.4 2.6 3.8

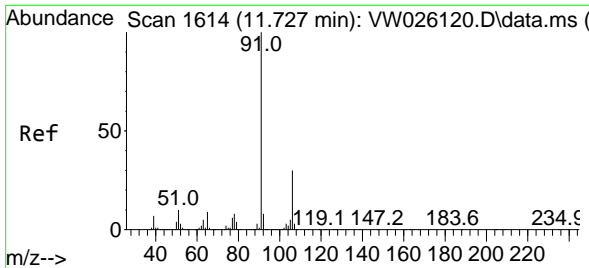


#51
 Chlorobenzene
 Concen: 23.958 ug/L
 RT: 11.654 min Scan# 1602
 Delta R.T. -0.000 min
 Lab File: VW026126.D
 Acq: 07 Jun 2023 16:11



Tgt Ion:112 Resp: 696246
 Ion Ratio Lower Upper
 112 100
 114 31.8 23.0 42.6
 77 62.1 50.9 76.3

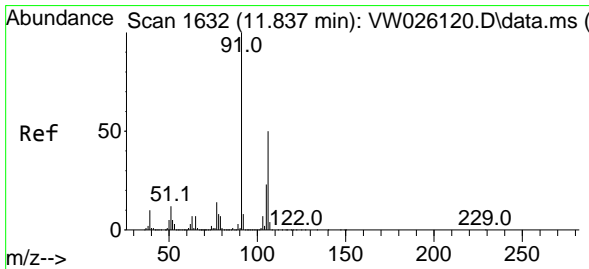
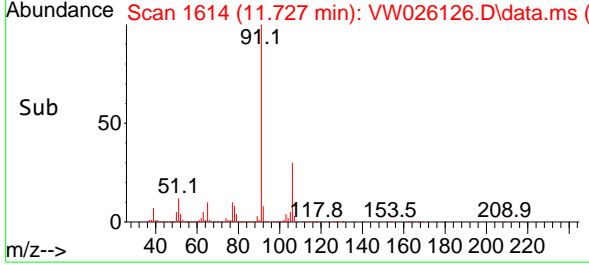
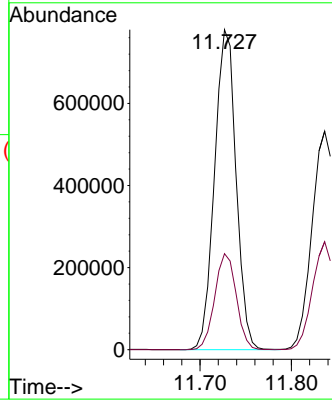
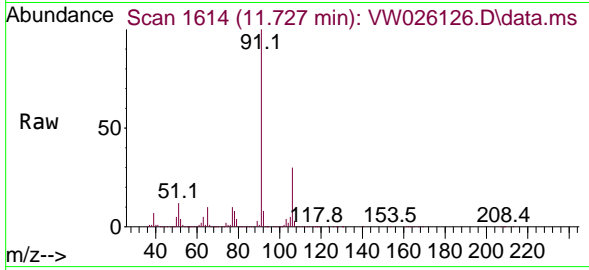




#52
 Ethylbenzene
 Concen: 24.398 ug/L
 RT: 11.727 min Scan# 1614
 Delta R.T. -0.000 min
 Lab File: VW026126.D
 Acq: 07 Jun 2023 16:11

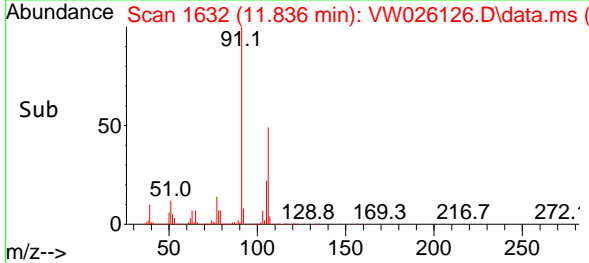
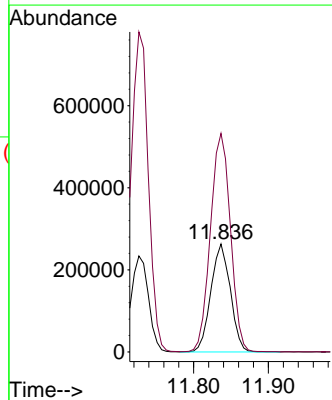
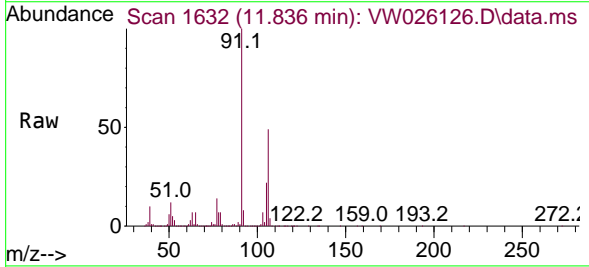
Instrument : MSVOA_W
 ClientSampleId : VSTD025509

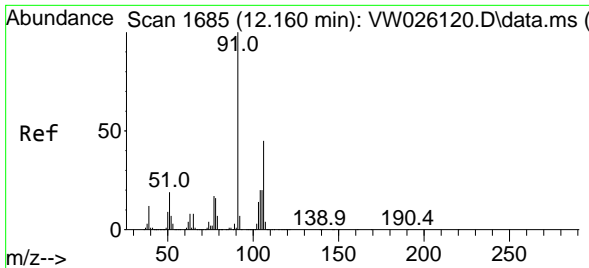
Tgt Ion: 91 Resp: 1276343
 Ion Ratio Lower Upper
 91 100
 106 30.0 21.2 39.4



#53
 m,p-Xylene
 Concen: 24.449 ug/L
 RT: 11.836 min Scan# 1632
 Delta R.T. -0.000 min
 Lab File: VW026126.D
 Acq: 07 Jun 2023 16:11

Tgt Ion: 106 Resp: 475824
 Ion Ratio Lower Upper
 106 100
 91 202.4 149.5 277.7

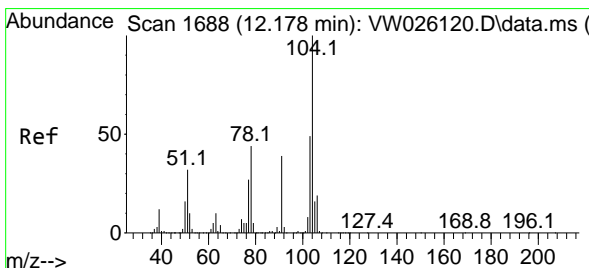
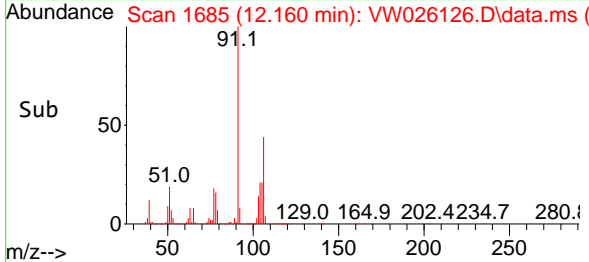
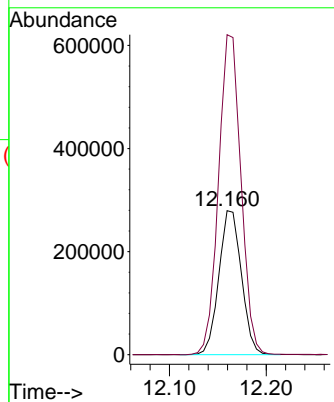
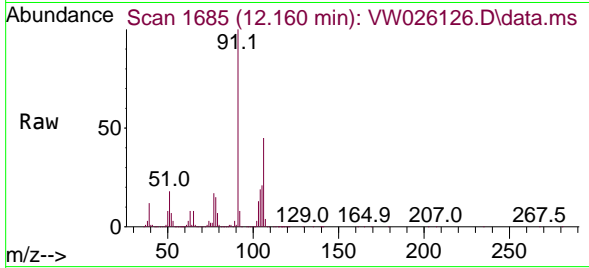




#54
 o-Xylene
 Concen: 24.620 ug/L
 RT: 12.160 min Scan# 1685
 Delta R.T. -0.000 min
 Lab File: VW026126.D
 Acq: 07 Jun 2023 16:11

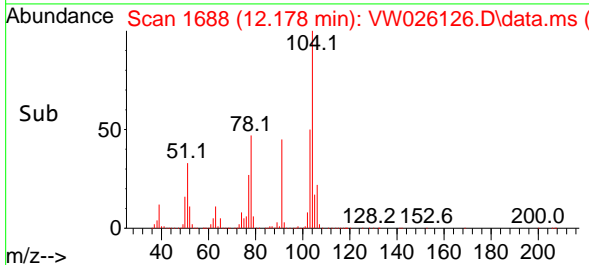
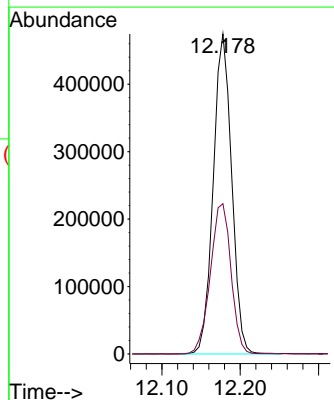
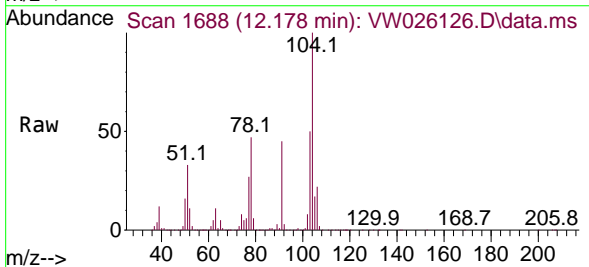
Instrument : MSVOA_W
 ClientSampleId : VSTD025509

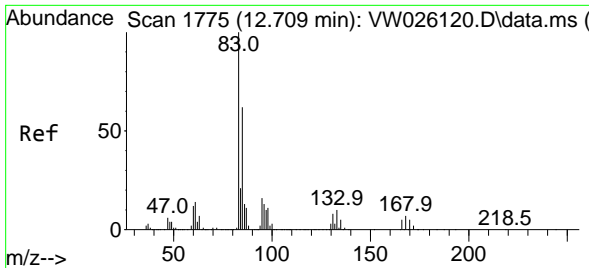
Tgt Ion:106 Resp: 452234
 Ion Ratio Lower Upper
 106 100
 91 222.2 150.9 280.3



#55
 Styrene
 Concen: 24.585 ug/L
 RT: 12.178 min Scan# 1688
 Delta R.T. -0.000 min
 Lab File: VW026126.D
 Acq: 07 Jun 2023 16:11

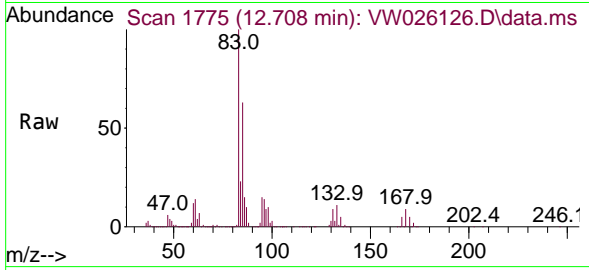
Tgt Ion:104 Resp: 774735
 Ion Ratio Lower Upper
 104 100
 78 46.9 32.6 60.6



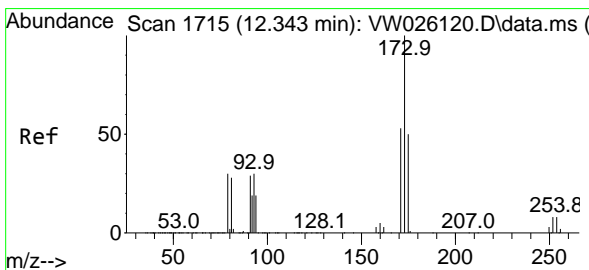
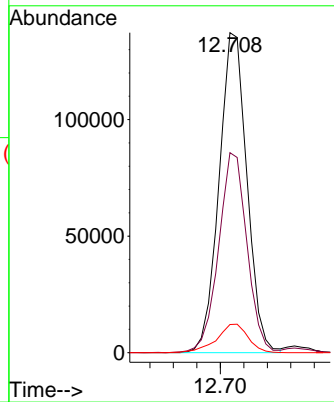
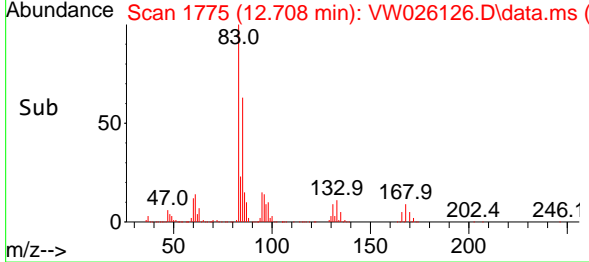


#57
 1,1,2,2-Tetrachloroethane
 Concen: 23.116 ug/L
 RT: 12.708 min Scan# 1775
 Delta R.T. -0.000 min
 Lab File: VW026126.D
 Acq: 07 Jun 2023 16:11

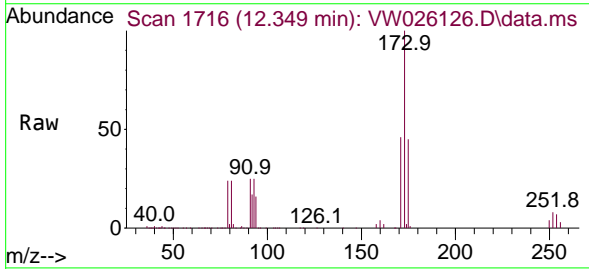
Instrument : MSVOA_W
 ClientSampleId : VSTD025509



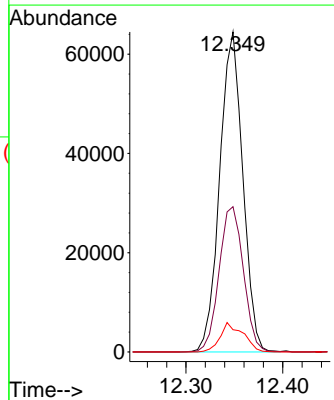
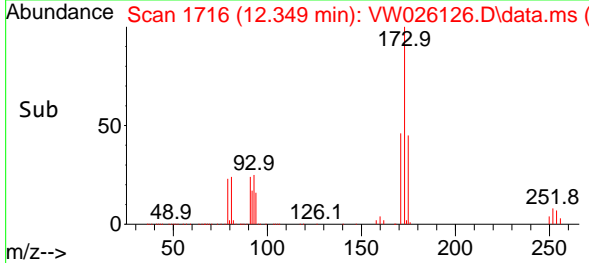
Tgt Ion: 83 Resp: 226427
 Ion Ratio Lower Upper
 83 100
 85 62.5 42.6 79.0
 131 8.8 7.2 10.8

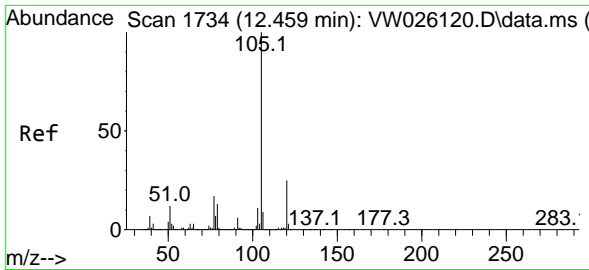


#59
 Bromoform
 Concen: 21.629 ug/L
 RT: 12.349 min Scan# 1716
 Delta R.T. 0.006 min
 Lab File: VW026126.D
 Acq: 07 Jun 2023 16:11



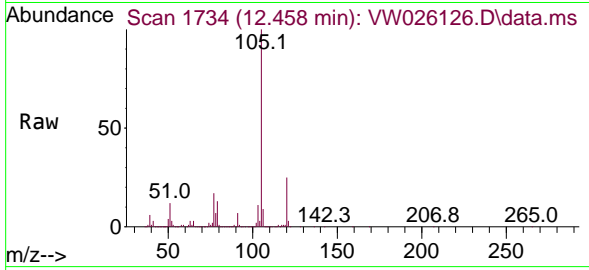
Tgt Ion:173 Resp: 106893
 Ion Ratio Lower Upper
 173 100
 175 47.9 38.6 57.8
 254 9.1 7.4 11.0





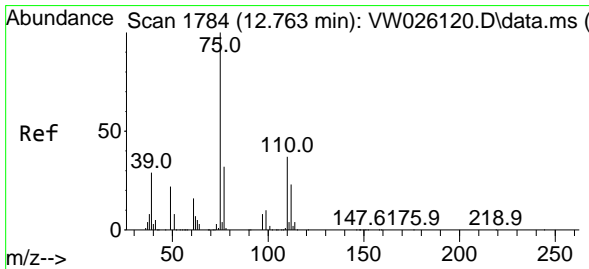
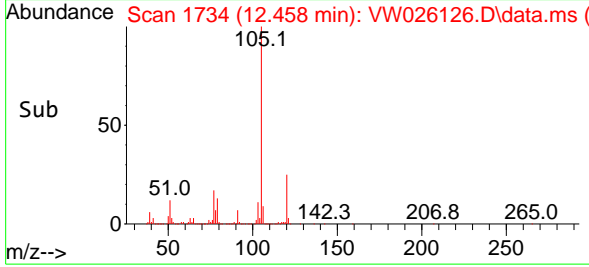
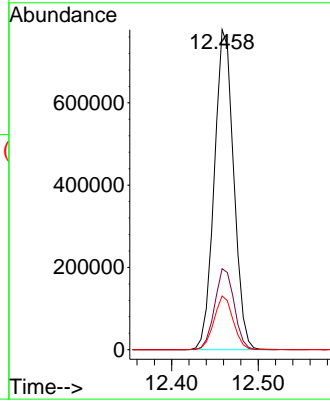
#60
 Isopropylbenzene
 Concen: 23.412 ug/L
 RT: 12.458 min Scan# 11
 Delta R.T. -0.000 min
 Lab File: VW026126.D
 Acq: 07 Jun 2023 16:11

Instrument :
 MSVOA_W
 ClientSampleId :
 VSTD025509

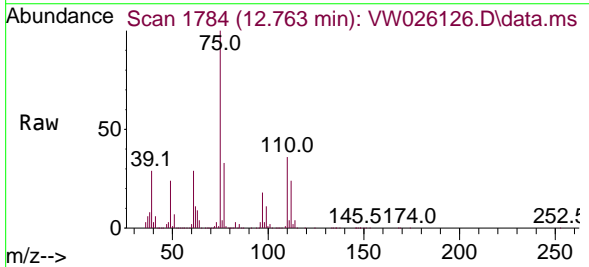


Tgt Ion:105 Resp: 1210182

Ion	Ratio	Lower	Upper
105	100		
120	25.4	19.8	29.8
77	16.6	13.3	19.9

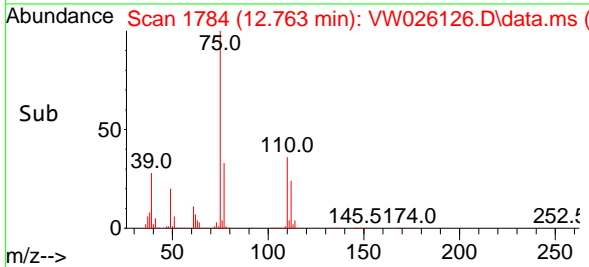
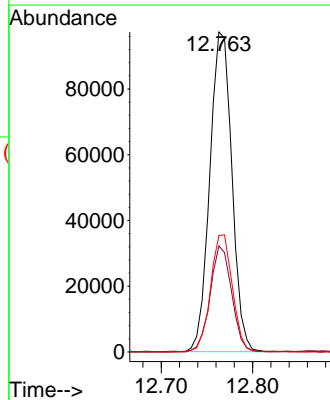


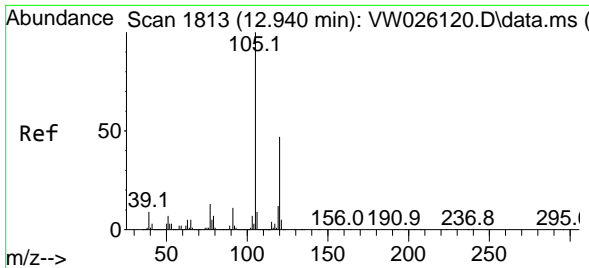
#61
 1,2,3-Trichloropropane
 Concen: 22.160 ug/L
 RT: 12.763 min Scan# 1784
 Delta R.T. -0.000 min
 Lab File: VW026126.D
 Acq: 07 Jun 2023 16:11



Tgt Ion: 75 Resp: 163329

Ion	Ratio	Lower	Upper
75	100		
77	32.0	25.2	37.8
110	36.2	28.7	43.1

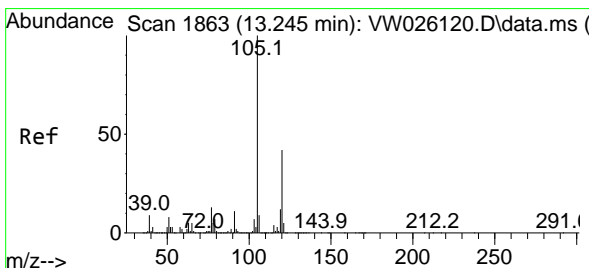
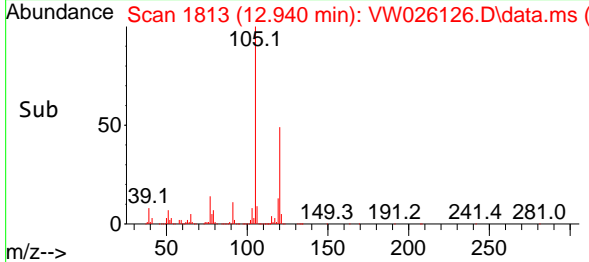
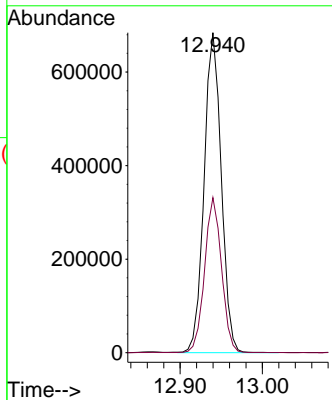
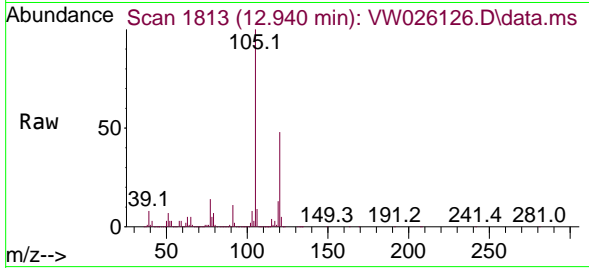




#62
 1,3,5-Trimethylbenzene
 Concen: 24.139 ug/L
 RT: 12.940 min Scan# 1813
 Delta R.T. -0.000 min
 Lab File: VW026126.D
 Acq: 07 Jun 2023 16:11

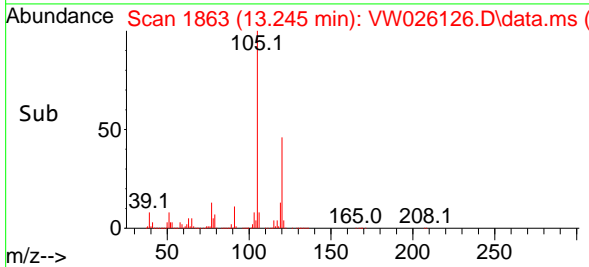
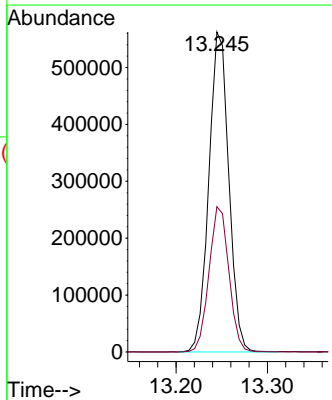
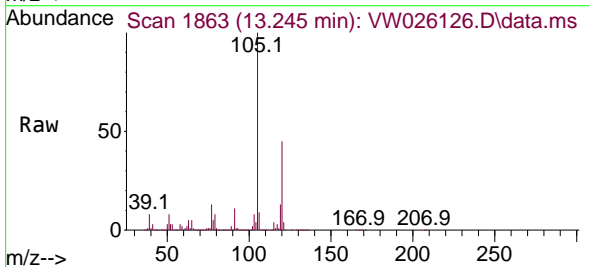
Instrument : MSVOA_W
 ClientSampleId : VSTD025509

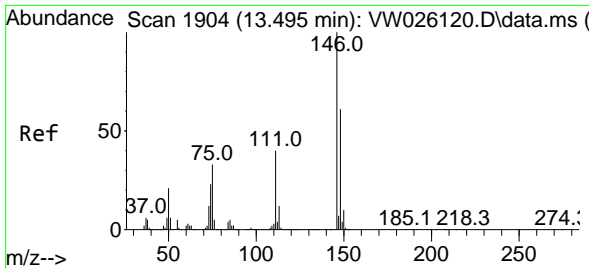
Tgt Ion:105 Resp: 991879
 Ion Ratio Lower Upper
 105 100
 120 47.8 38.8 58.2



#63
 1,2,4-Trimethylbenzene
 Concen: 22.642 ug/L
 RT: 13.245 min Scan# 1863
 Delta R.T. -0.000 min
 Lab File: VW026126.D
 Acq: 07 Jun 2023 16:11

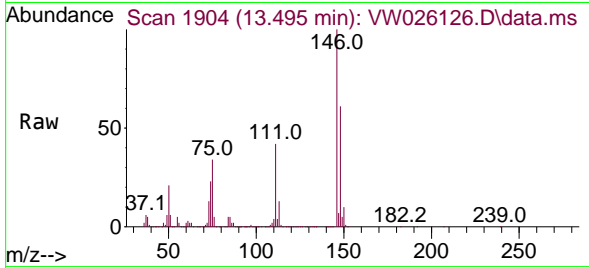
Tgt Ion:105 Resp: 852132
 Ion Ratio Lower Upper
 105 100
 120 45.3 36.2 54.2



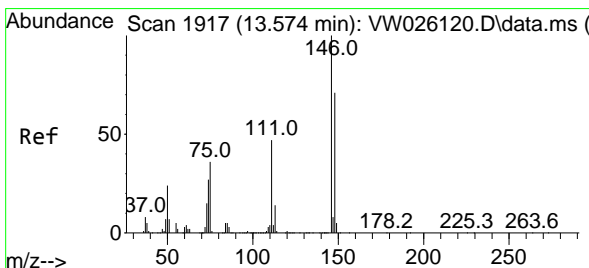
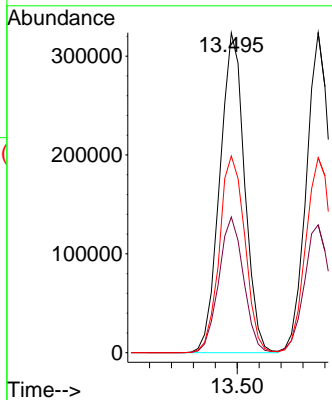
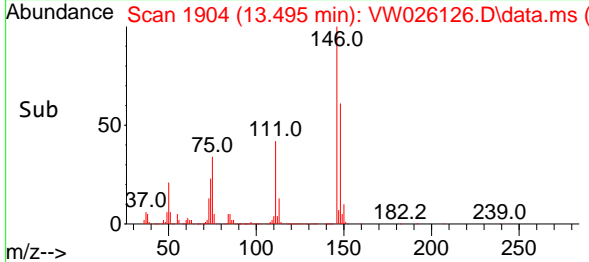


#64
 1,3-Dichlorobenzene
 Concen: 23.367 ug/L
 RT: 13.495 min Scan# 1904
 Delta R.T. -0.000 min
 Lab File: VW026126.D
 Acq: 07 Jun 2023 16:11

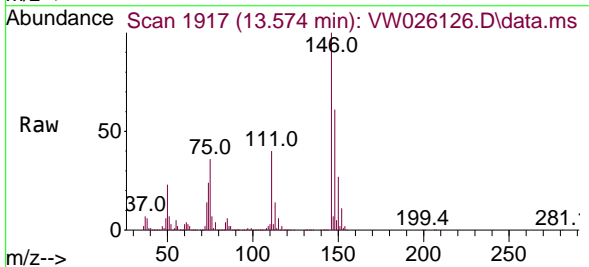
Instrument :
 MSVOA_W
 ClientSampleId :
 VSTD025509



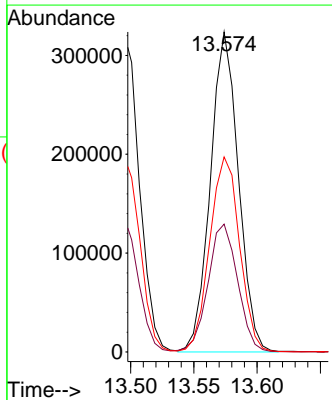
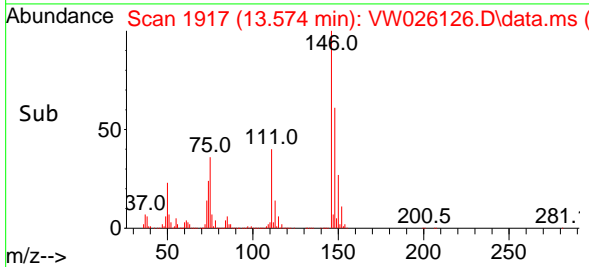
Tgt Ion:146 Resp: 507853
 Ion Ratio Lower Upper
 146 100
 111 42.4 29.7 55.1
 148 61.5 45.4 84.4

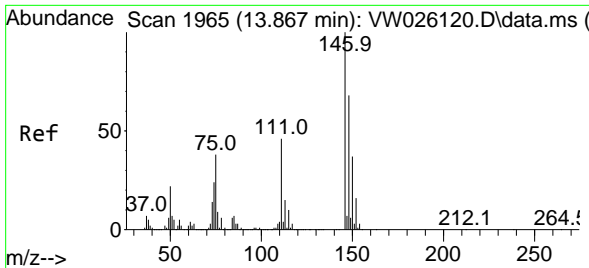


#65
 1,4-Dichlorobenzene
 Concen: 22.805 ug/L
 RT: 13.574 min Scan# 1917
 Delta R.T. -0.000 min
 Lab File: VW026126.D
 Acq: 07 Jun 2023 16:11



Tgt Ion:146 Resp: 498986
 Ion Ratio Lower Upper
 146 100
 111 39.9 29.2 54.2
 148 60.9 42.8 79.6

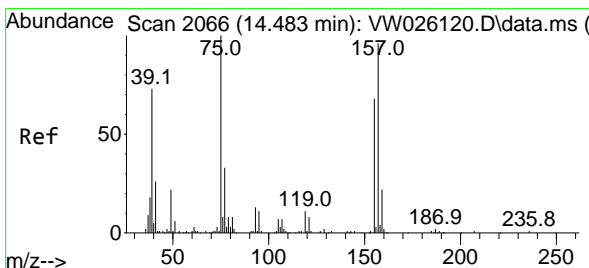
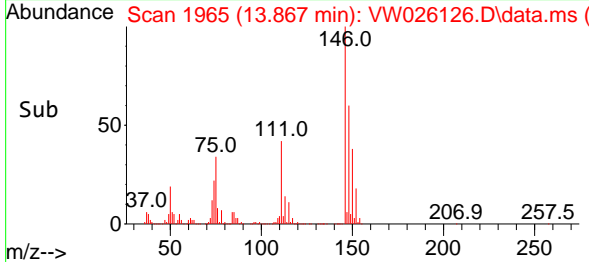
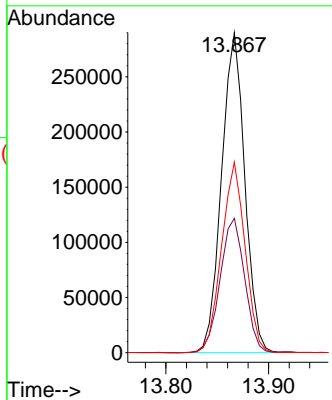
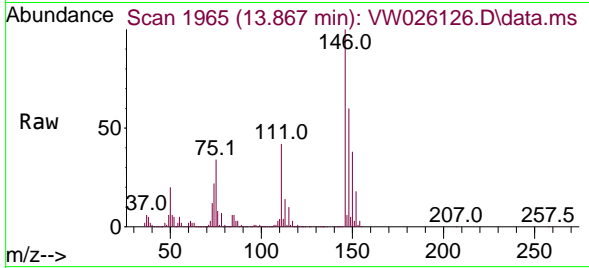




#67
 1,2-Dichlorobenzene
 Concen: 23.391 ug/L
 RT: 13.867 min Scan# 1965
 Delta R.T. -0.000 min
 Lab File: VW026126.D
 Acq: 07 Jun 2023 16:11

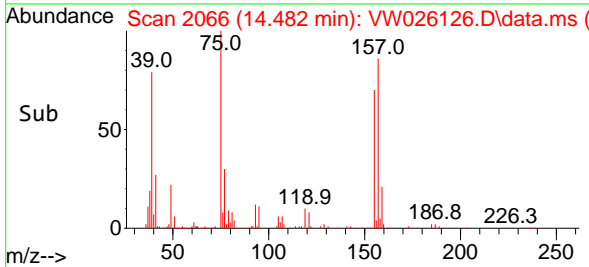
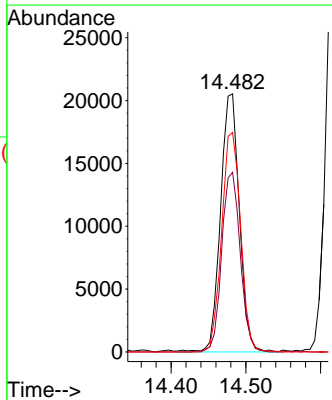
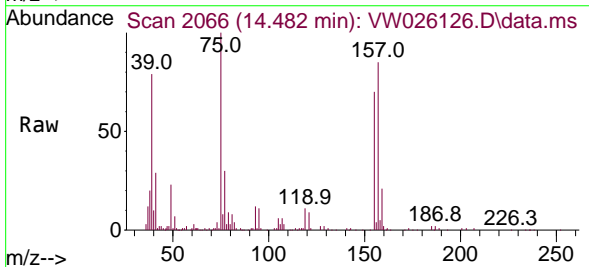
Instrument : MSVOA_W
 ClientSampleId : VSTD025509

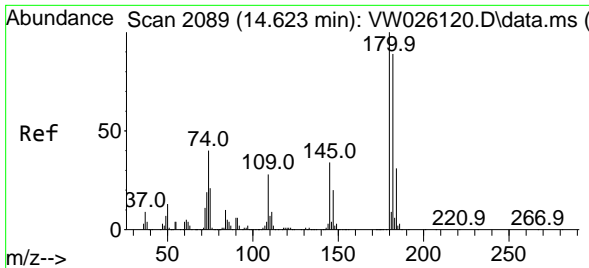
Tgt Ion	Resp	Lower	Upper
146	100		
111	42.0	35.4	53.0
148	59.6	51.7	77.5



#68
 1,2-Dibromo-3-chloropropane
 Concen: 21.073 ug/L
 RT: 14.482 min Scan# 2066
 Delta R.T. -0.000 min
 Lab File: VW026126.D
 Acq: 07 Jun 2023 16:11

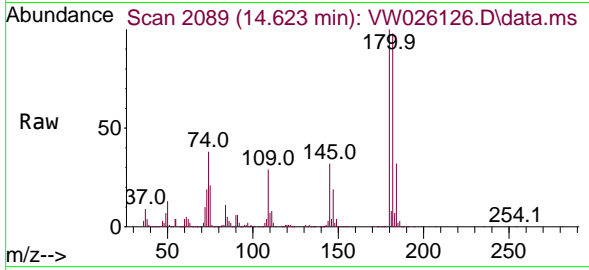
Tgt Ion	Resp	Lower	Upper
75	100		
155	69.6	59.0	88.6
157	85.0	71.7	107.5



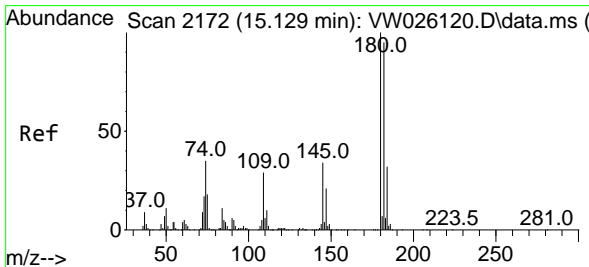
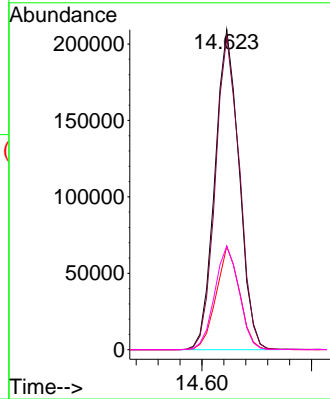
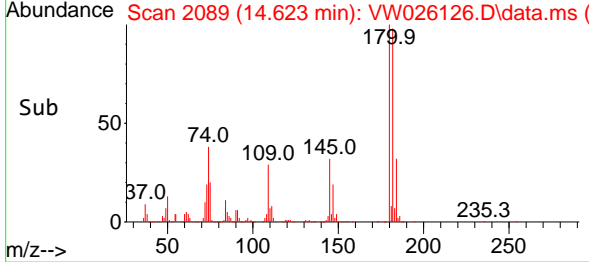


#69
 1,3,5-Trichlorobenzene
 Concen: 21.525 ug/L
 RT: 14.623 min Scan# 2089
 Delta R.T. -0.000 min
 Lab File: VW026126.D
 Acq: 07 Jun 2023 16:11

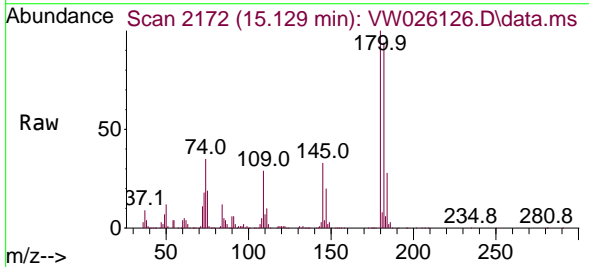
Instrument : MSVOA_W
 ClientSampleId : VSTD025509



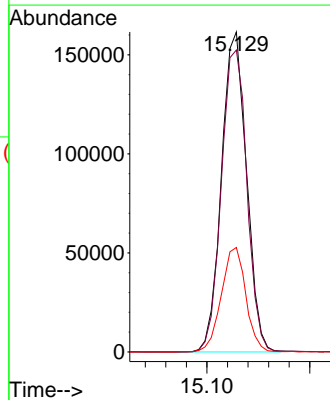
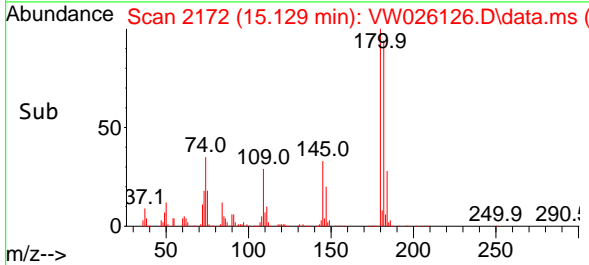
Tgt Ion:180 Resp: 321353
 Ion Ratio Lower Upper
 180 100
 182 97.5 77.0 115.4
 184 31.1 23.7 35.5
 145 32.6 25.1 37.7

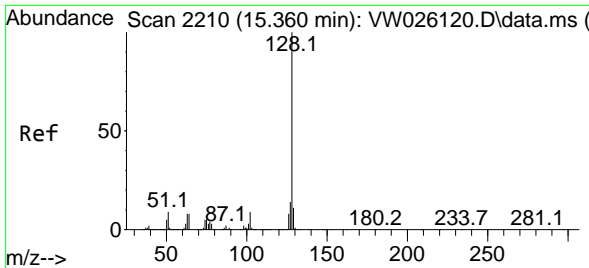


#70
 1,2,4-trichlorobenzene
 Concen: 22.141 ug/L
 RT: 15.129 min Scan# 2172
 Delta R.T. -0.000 min
 Lab File: VW026126.D
 Acq: 07 Jun 2023 16:11



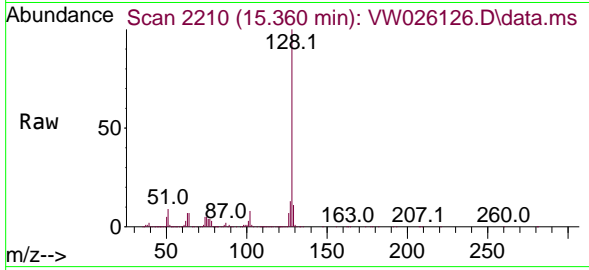
Tgt Ion:180 Resp: 272757
 Ion Ratio Lower Upper
 180 100
 182 96.2 78.9 118.3
 145 32.0 27.2 40.8





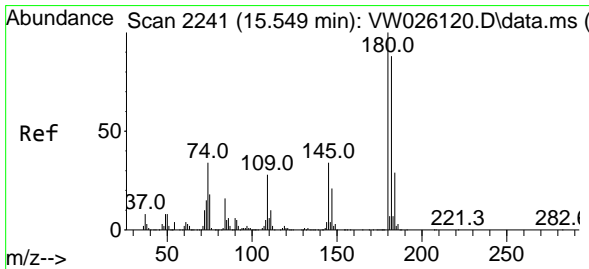
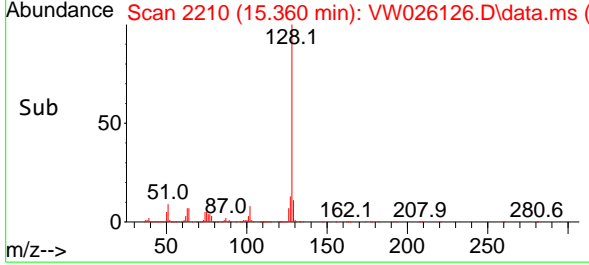
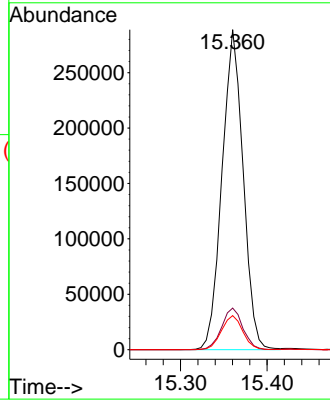
#71
 Naphthalene
 Concen: 22.256 ug/L
 RT: 15.360 min Scan# 2110
 Delta R.T. -0.000 min
 Lab File: VW026126.D
 Acq: 07 Jun 2023 16:11

Instrument : MSVOA_W
 ClientSampleId : VSTD025509

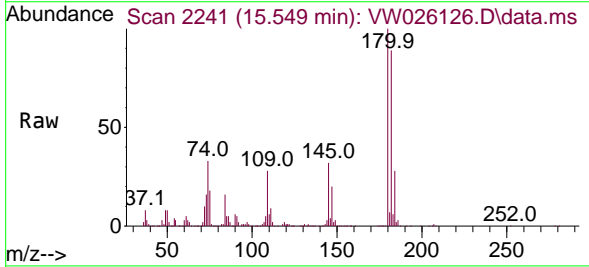


Tgt Ion:128 Resp: 488645

Ion	Ratio	Lower	Upper
128	100		
127	13.1	10.6	15.8
129	10.8	8.8	13.2



#72
 1,2,3-Trichlorobenzene
 Concen: 22.468 ug/L
 RT: 15.549 min Scan# 2241
 Delta R.T. -0.000 min
 Lab File: VW026126.D
 Acq: 07 Jun 2023 16:11



Tgt Ion:180 Resp: 241895

Ion	Ratio	Lower	Upper
180	100		
182	91.8	76.3	114.5
145	32.6	27.0	40.6

