

Data Path : Z:\voasrv\HPCHEM1\MSVOA_W\Data\VW060923\
 Data File : VW026163.D
 Acq On : 09 Jun 2023 12:13
 Operator : SY/MD
 Sample : 03101-10RE
 Misc : 5.65g/10mL/MSVOA_W/SOIL
 ALS Vial : 1 Sample Multiplier: 1

Instrument :
 MSVOA_W
 ClientSampleId :
 EZEM6RE

Integration Parameters: LSCINT.P

Integrator: RTE
 Smoothing : OFF Filtering: 5
 Sampling : 1 Min Area: 0 % of largest Peak
 Start Thrs: 0.2 Max Peaks: 100
 Stop Thrs : 0 Peak Location: TOP

If leading or trailing edge < 100 prefer < Baseline drop else tangent >
 Peak separation: 5

Method : Z:\voasrv\HPCHEM1\MSVOA_W\Method\SFAMWLM053023SMA.M
 Title : SFAM01.0

Signal : TIC: VW026163.D\data.ms

peak #	R.T. min	first scan	max scan	last scan	PK TY	peak height	corr. area	corr. % max.	% of total
1	2.363	71	78	93	rBV	163173	399531	11.79%	0.947%
2	2.649	122	125	126	rBV3	4098	5451	0.16%	0.013%
3	2.893	158	165	178	rBV	150479	420269	12.40%	0.996%
4	3.387	241	246	251	rBV5	5752	10869	0.32%	0.026%
5	4.021	340	350	360	rBV	326267	1016747	30.00%	2.410%
6	4.118	360	366	376	rVB	99805	274382	8.10%	0.650%
7	4.393	399	411	422	rVV3	12295	43454	1.28%	0.103%
8	4.923	488	498	501	rBV5	9651	28125	0.83%	0.067%
9	5.697	619	625	629	rBV8	2794	5704	0.17%	0.014%
10	5.801	629	642	643	rBV8	2861	9437	0.28%	0.022%
11	5.935	660	664	671	rVB8	3581	8733	0.26%	0.021%
12	7.075	843	851	859	rBV	115521	326367	9.63%	0.774%
13	7.167	861	866	879	rVB	47026	143382	4.23%	0.340%
14	7.648	934	945	959	rVB	569787	1419299	41.88%	3.365%
15	8.148	1020	1027	1029	rBV8	1992	3688	0.11%	0.009%
16	8.276	1037	1048	1064	rBV2	1134650	3389235	100.00%	8.035%
17	8.471	1077	1080	1087	rVV7	2580	4315	0.13%	0.010%
18	8.569	1090	1096	1102	rVB10	3220	7919	0.23%	0.019%
19	8.691	1112	1116	1123	rBV10	3070	5967	0.18%	0.014%
20	8.837	1130	1140	1154	rBV	1154599	2312717	68.24%	5.483%
21	8.941	1154	1157	1158	rVV3	3086	3761	0.11%	0.009%
22	9.075	1175	1179	1185	rVB8	5374	10862	0.32%	0.026%
23	9.270	1202	1211	1237	rVB	816518	1698441	50.11%	4.027%
24	9.666	1270	1276	1281	rBV3	7377	15416	0.45%	0.037%
25	9.752	1285	1290	1296	rVB9	4773	10689	0.32%	0.025%
26	9.861	1302	1308	1309	rBV6	2970	3904	0.12%	0.009%
27	9.886	1310	1312	1319	rVB7	3070	5235	0.15%	0.012%
28	10.032	1327	1336	1343	rBV	331681	602899	17.79%	1.429%
29	10.130	1348	1352	1360	rVB7	7573	16086	0.47%	0.038%
30	10.215	1360	1366	1368	rBV7	2485	4355	0.13%	0.010%
31	10.319	1375	1383	1392	rBV	1330431	2369809	69.92%	5.618%
32	10.489	1406	1411	1412	rBV5	3333	4503	0.13%	0.011%
33	10.575	1419	1425	1434	rBV	211437	362964	10.71%	0.860%
34	10.660	1434	1439	1443	rVB7	4491	8653	0.26%	0.021%
35	10.764	1450	1456	1459	rBV7	4466	7929	0.23%	0.019%
36	10.849	1466	1470	1475	rVB8	3274	5809	0.17%	0.014%

Data Path : Z:\voasrv\HPCHEM1\MSVOA_W\Data\VW060923\
 Data File : VW026163.D
 Acq On : 09 Jun 2023 12:13
 Operator : SY/MD
 Sample : 03101-10RE
 Misc : 5.65g/10mL/MSVOA_W/SOIL
 ALS Vial : 1 Sample Multiplier: 1

Instrument :
 MSVOA_W
 ClientSampleId :
 EZEM6RE

Integration Parameters: LSCINT.P

Integrator: RTE
 Smoothing : OFF
 Sampling : 1
 Start Thrs: 0.2
 Stop Thrs : 0

Filtering: 5
 Min Area: 0 % of largest Peak
 Max Peaks: 100
 Peak Location: TOP

If leading or trailing edge < 100 prefer < Baseline drop else tangent >
 Peak separation: 5

Method : Z:\voasrv\HPCHEM1\MSVOA_W\Method\SFAMWLM053023SMA.M
 Title : SFAM01.0

37	10.922	1475	1482	1495	rBV	412307	720633	21.26%	1.708%
38	11.026	1497	1499	1504	rVB6	2341	3715	0.11%	0.009%
39	11.099	1509	1511	1516	rVV6	2865	5242	0.15%	0.012%
40	11.172	1519	1523	1527	rVV3	11120	19466	0.57%	0.046%
41	11.227	1527	1532	1537	rVV2	16368	28045	0.83%	0.066%
42	11.331	1545	1549	1554	rVB5	6864	11686	0.34%	0.028%
43	11.434	1561	1566	1573	rVB7	11659	22645	0.67%	0.054%
44	11.507	1573	1578	1582	rBV2	7352	12909	0.38%	0.031%
45	11.629	1590	1598	1609	rBV	1258887	2103469	62.06%	4.987%
46	11.727	1611	1614	1616	rBV4	3369	4672	0.14%	0.011%
47	11.757	1616	1619	1623	rVB5	5154	6313	0.19%	0.015%
48	11.812	1623	1628	1631	rBV7	8461	15482	0.46%	0.037%
49	11.873	1633	1638	1641	rBV2	20906	34359	1.01%	0.081%
50	11.910	1641	1644	1649	rVB4	18287	32896	0.97%	0.078%
51	11.971	1649	1654	1659	rBV8	6147	13214	0.39%	0.031%
52	12.056	1662	1668	1674	rVB7	7035	15729	0.46%	0.037%
53	12.135	1674	1681	1689	rBV4	39509	110311	3.25%	0.262%
54	12.245	1692	1699	1704	rVB2	47803	84925	2.51%	0.201%
55	12.300	1704	1708	1710	rBV4	19554	31783	0.94%	0.075%
56	12.361	1710	1718	1720	rBV3	57946	147943	4.37%	0.351%
57	12.446	1730	1732	1734	rBV2	7008	8111	0.24%	0.019%
58	12.501	1737	1741	1749	rVB7	37143	85115	2.51%	0.202%
59	12.617	1753	1760	1765	rVB6	26326	49194	1.45%	0.117%
60	12.690	1765	1772	1778	rBV	513365	879322	25.94%	2.085%
61	12.775	1781	1786	1793	rVB3	114888	219153	6.47%	0.520%
62	12.855	1793	1799	1803	rBV5	53477	116172	3.43%	0.275%
63	12.940	1803	1813	1817	rBV4	148489	388166	11.45%	0.920%
64	12.989	1818	1821	1825	rVB2	84142	123735	3.65%	0.293%
65	13.044	1825	1830	1831	rBV3	17946	25575	0.75%	0.061%
66	13.074	1831	1835	1839	rBV2	64281	98862	2.92%	0.234%
67	13.117	1839	1842	1846	rBV5	38486	63728	1.88%	0.151%
68	13.178	1847	1852	1857	rBV5	52126	102269	3.02%	0.242%
69	13.288	1862	1870	1874	rBV3	103029	225465	6.65%	0.535%
70	13.336	1874	1878	1882	rBV3	99431	153088	4.52%	0.363%
71	13.446	1887	1896	1899	rBV5	273264	563722	16.63%	1.336%
72	13.556	1908	1914	1923	rBV	669043	1162544	34.30%	2.756%
73	13.690	1931	1936	1941	rBV3	134504	261087	7.70%	0.619%
74	13.806	1950	1955	1956	rBV4	54181	85979	2.54%	0.204%
75	13.873	1957	1966	1970	rVV2	725268	2077516	61.30%	4.925%
76	13.915	1970	1973	1978	rVB3	170725	266575	7.87%	0.632%

Data Path : Z:\voasrv\HPCHEM1\MSVOA_W\Data\VW060923\
 Data File : VW026163.D
 Acq On : 09 Jun 2023 12:13
 Operator : SY/MD
 Sample : 03101-10RE
 Misc : 5.65g/10mL/MSVOA_W/SOIL
 ALS Vial : 1 Sample Multiplier: 1

Instrument :
 MSVOA_W
 ClientSampleId :
 EZEM6RE

Integration Parameters: LSCINT.P

Integrator: RTE
 Smoothing : OFF Filtering: 5
 Sampling : 1 Min Area: 0 % of largest Peak
 Start Thrs: 0.2 Max Peaks: 100
 Stop Thrs : 0 Peak Location: TOP

If leading or trailing edge < 100 prefer < Baseline drop else tangent >
 Peak separation: 5

Method : Z:\voasrv\HPCHEM1\MSVOA_W\Method\SFAMWLM053023SMA.M
 Title : SFAM01.0

77	13.970	1978	1982	1986	rBV2	179781	285132	8.41%	0.676%
78	14.056	1993	1996	1999	rBV3	83580	131678	3.89%	0.312%
79	14.086	1999	2001	2013	rVB3	269329	593688	17.52%	1.407%
80	14.190	2014	2018	2023	rBV6	106176	235171	6.94%	0.558%
81	14.257	2025	2029	2034	rBV3	238257	417847	12.33%	0.991%
82	14.312	2034	2038	2042	rBV4	148764	186364	5.50%	0.442%
83	14.379	2042	2049	2054	rBV2	797218	1454740	42.92%	3.449%
84	14.543	2070	2076	2082	rBV4	483895	1013517	29.90%	2.403%
85	14.610	2082	2087	2090	rBV3	90996	210676	6.22%	0.499%
86	14.732	2103	2107	2112	rBV5	265162	545053	16.08%	1.292%
87	14.787	2112	2116	2122	rVV3	649507	1126400	33.23%	2.670%
88	14.848	2122	2126	2134	rVV3	552758	886676	26.16%	2.102%
89	14.921	2135	2138	2141	rBV3	106358	147964	4.37%	0.351%
90	15.049	2156	2159	2164	rVB2	387006	615552	18.16%	1.459%
91	15.110	2164	2169	2173	rBV4	319574	625393	18.45%	1.483%
92	15.165	2173	2178	2185	rBV6	411910	993182	29.30%	2.355%
93	15.318	2198	2203	2210	rVB	1725760	2745280	81.00%	6.508%
94	15.409	2210	2218	2221	rBV6	290648	849741	25.07%	2.014%
95	15.568	2239	2244	2249	rBV5	234780	477479	14.09%	1.132%
96	15.616	2249	2252	2256	rBV2	186379	286885	8.46%	0.680%
97	15.726	2266	2270	2275	rVB5	269198	440063	12.98%	1.043%
98	16.275	2354	2360	2367	rVB	1032144	1936996	57.15%	4.592%
99	16.531	2398	2402	2407	rVB2	189845	323889	9.56%	0.768%
100	16.610	2411	2415	2419	rBV5	143590	304243	8.98%	0.721%

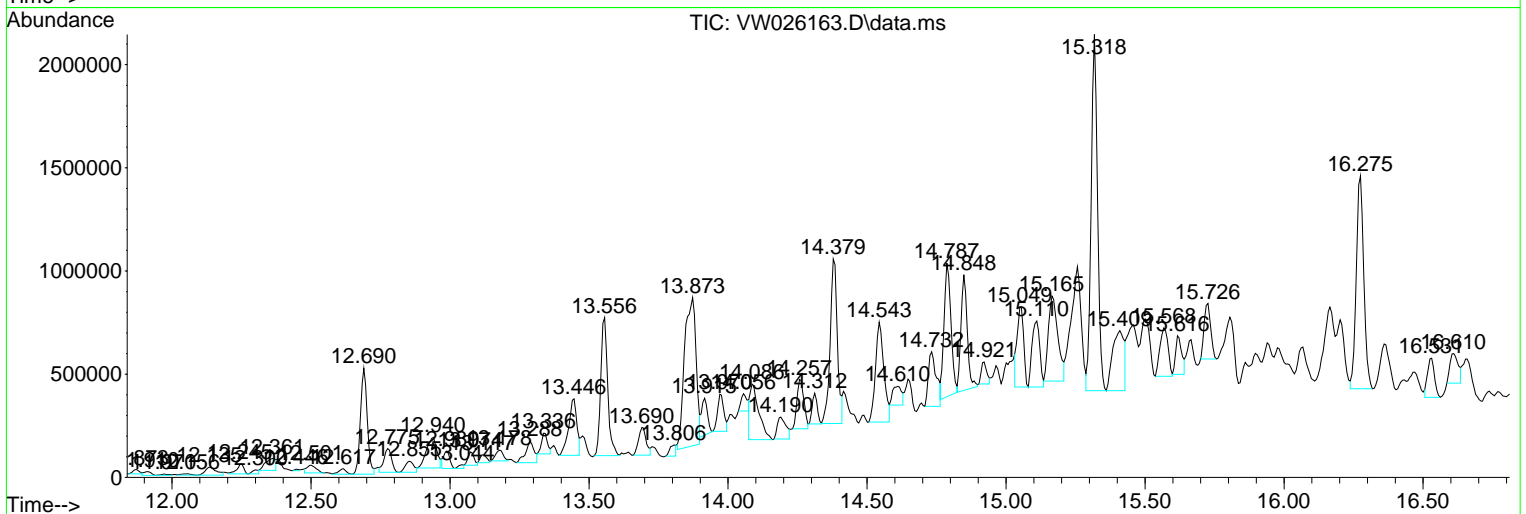
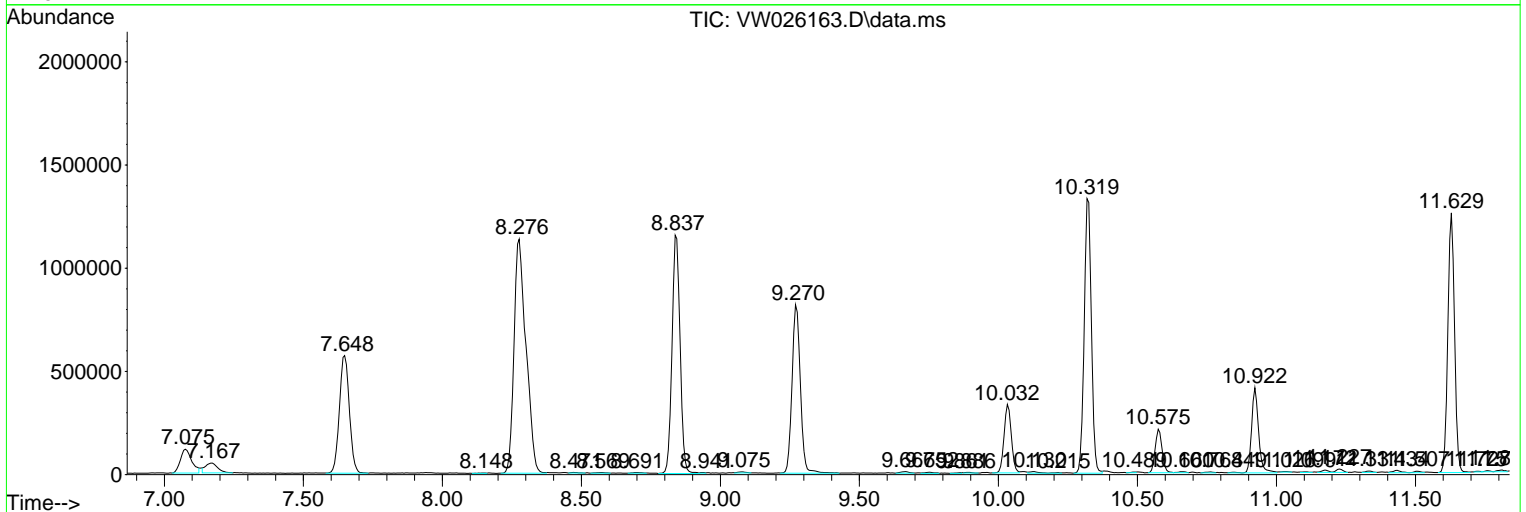
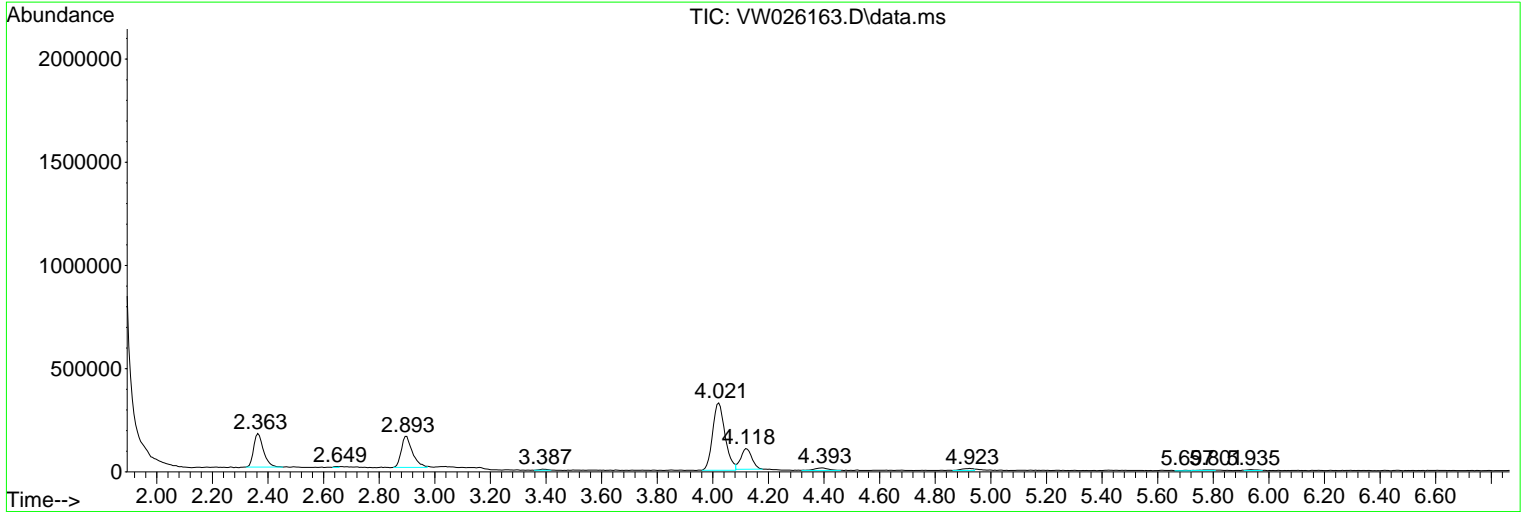
Sum of corrected areas: 42181330

Data Path : Z:\voasrv\HPCHEM1\MSVOA_W\Data\VW060923\
 Data File : VW026163.D
 Acq On : 09 Jun 2023 12:13
 Operator : SY/MD
 Sample : 03101-10RE
 Misc : 5.65g/10mL/MSVOA_W/SOIL
 ALS Vial : 1 Sample Multiplier: 1

Instrument :
 MSVOA_W
 ClientSampleId :
 EZEM6RE

Quant Method : Z:\voasrv\HPCHEM1\MSVOA_W\Method\SFAMWLM053023SMA.M
 Quant Title : SFAM01.0

TIC Library : C:\Database\NIST20.L
 TIC Integration Parameters: LSCINT.P



Data Path : Z:\voasrv\HPCHEM1\MSVOA_W\Data\VW060923\
 Data File : VW026163.D
 Acq On : 09 Jun 2023 12:13
 Operator : SY/MD
 Sample : 03101-10RE
 Misc : 5.65g/10mL/MSVOA_W/SOIL
 ALS Vial : 1 Sample Multiplier: 1

Instrument :
 MSVOA_W
 ClientSampleId :
 EZEM6RE

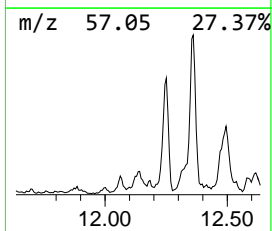
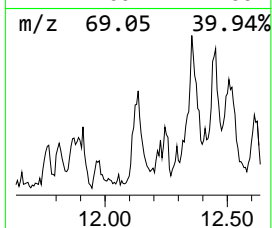
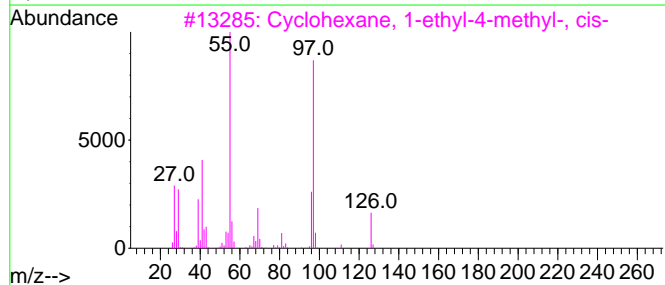
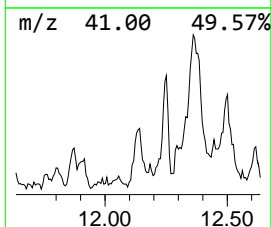
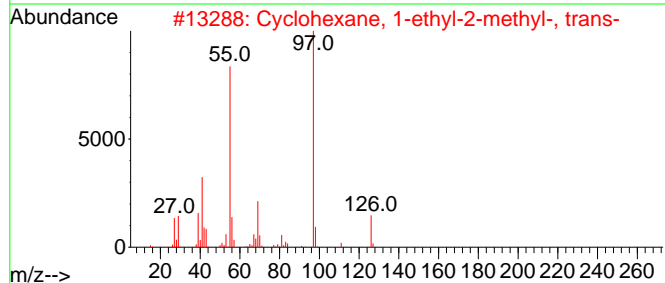
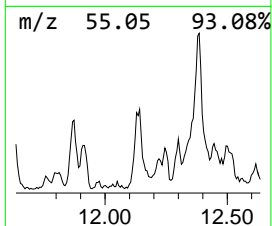
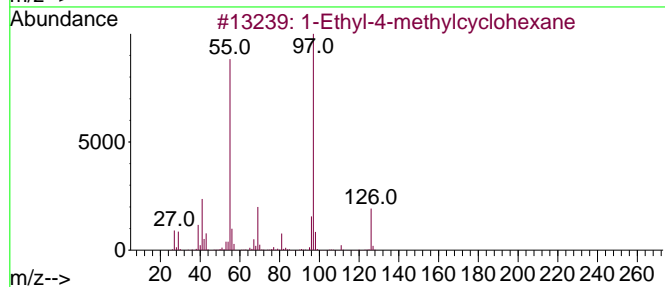
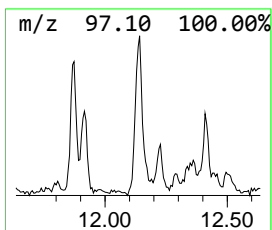
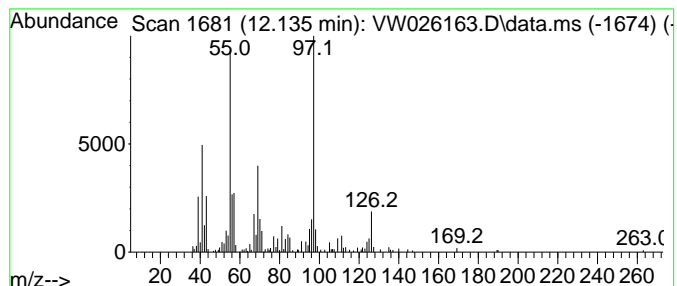
Quant Method : Z:\voasrv\HPCHEM1\MSVOA_W\Method\SFAMWLM053023SMA.M
 Quant Title : SFAM01.0

TIC Library : C:\Database\NIST20.L
 TIC Integration Parameters: LSCINT.P

 Peak Number 2 (DEL) Alkane: Cyclic12.135 Concentration Rank 39

R.T.	EstConc	Area	Relative to ISTD	R.T.
12.135	1.31 ug/L	110311	Chlorobenzene-d5	11.629

Hit#	of	5	Tentative ID	MW	MolForm	CAS#	Qual
1			1-Ethyl-4-methylcyclohexane	126	C9H18	003728-56-1	72
2			Cyclohexane, 1-ethyl-2-methyl-, ...	126	C9H18	004923-78-8	64
3			Cyclohexane, 1-ethyl-4-methyl-, ...	126	C9H18	004926-78-7	64
4			Cyclohexane, 1-ethyl-4-methyl-, ...	126	C9H18	006236-88-0	64
5			cis-1-Ethyl-3-methyl-cyclohexane	126	C9H18	019489-10-2	64



Data Path : Z:\voasrv\HPCHEM1\MSVOA_W\Data\VW060923\
 Data File : VW026163.D
 Acq On : 09 Jun 2023 12:13
 Operator : SY/MD
 Sample : 03101-10RE
 Misc : 5.65g/10mL/MSVOA_W/SOIL
 ALS Vial : 1 Sample Multiplier: 1

Instrument :
 MSVOA_W
 ClientSampleId :
 EZEM6RE

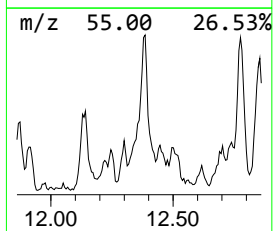
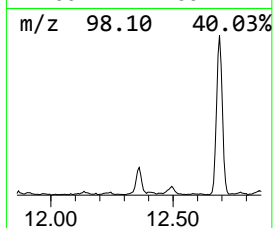
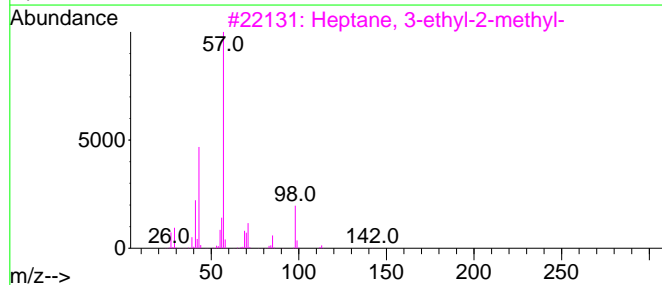
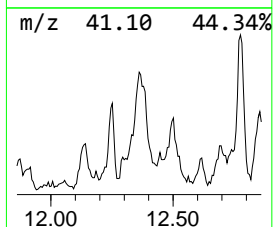
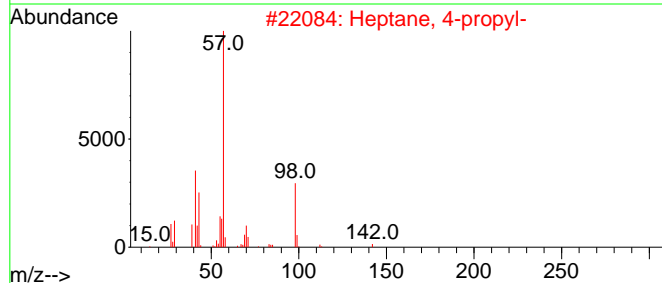
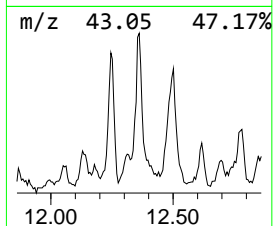
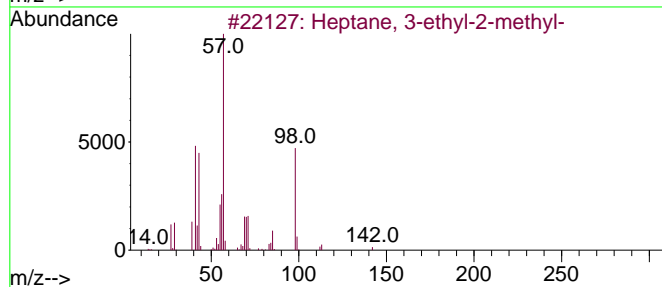
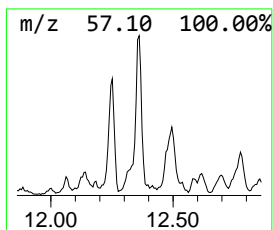
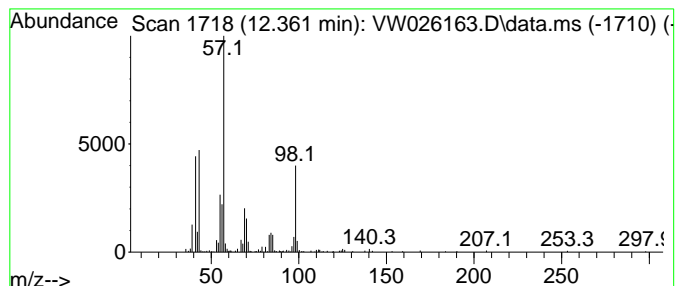
Quant Method : Z:\voasrv\HPCHEM1\MSVOA_W\Method\SFAMWLM053023SMA.M
 Quant Title : SFAM01.0

TIC Library : C:\Database\NIST0.L
 TIC Integration Parameters: LSCINT.P

 Peak Number 3 (DEL) Alkane: Straight-Chai... Concentration Rank 37

R.T.	EstConc	Area	Relative to ISTD	R.T.
12.361	1.76 ug/L	147943	Chlorobenzene-d5	11.629

Hit#	of	5	Tentative ID	MW	MolForm	CAS#	Qual
1			Heptane, 3-ethyl-2-methyl-	142	C10H22	014676-29-0	78
2			Heptane, 4-propyl-	142	C10H22	003178-29-8	53
3			Heptane, 3-ethyl-2-methyl-	142	C10H22	014676-29-0	53
4			4-Octylcyclohexanone	210	C14H26O	1000428-94-1	50
5			1-Octanol, 2-butyl-	186	C12H26O	003913-02-8	47



Data Path : Z:\voasrv\HPCHEM1\MSVOA_W\Data\VW060923\
 Data File : VW026163.D
 Acq On : 09 Jun 2023 12:13
 Operator : SY/MD
 Sample : 03101-10RE
 Misc : 5.65g/10mL/MSVOA_W/SOIL
 ALS Vial : 1 Sample Multiplier: 1

Instrument :
 MSVOA_W
 ClientSampleId :
 EZEM6RE

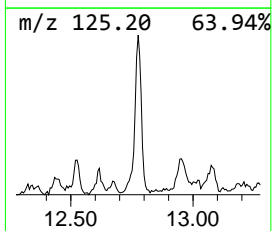
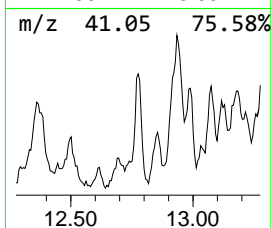
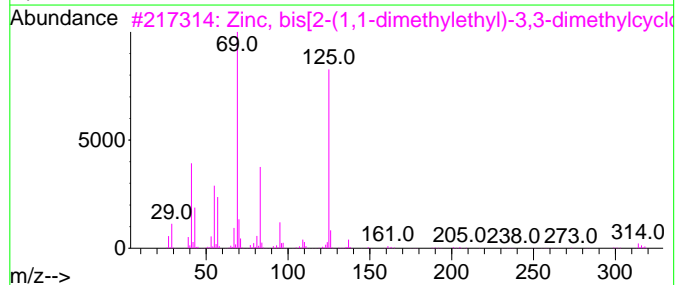
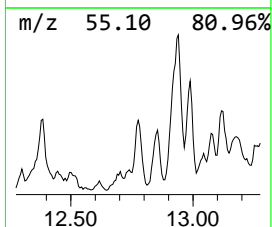
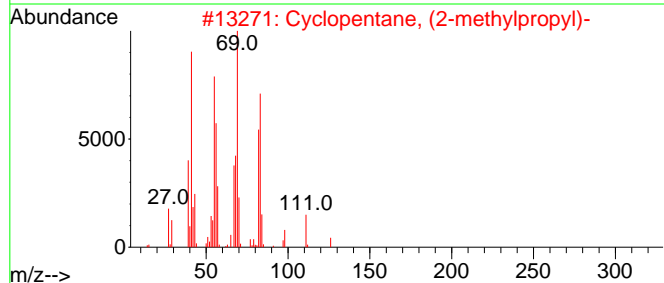
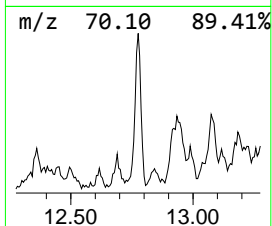
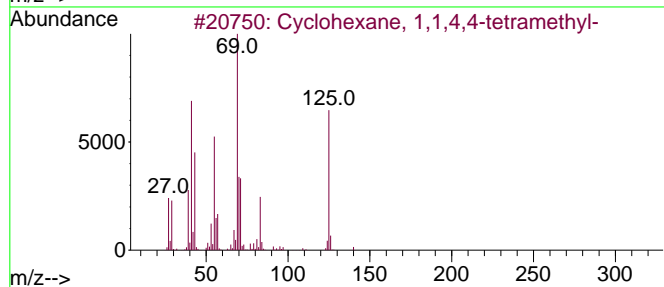
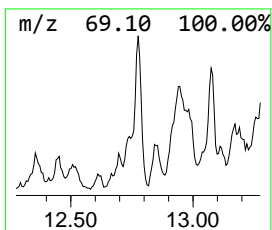
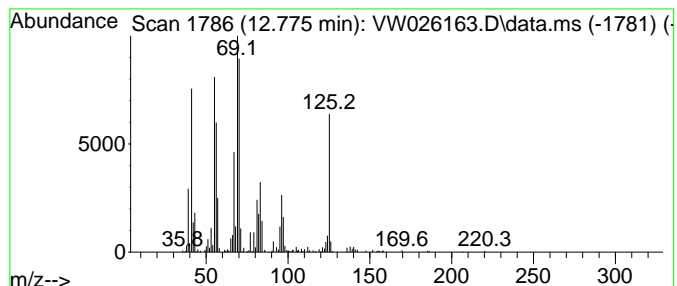
Quant Method : Z:\voasrv\HPCHEM1\MSVOA_W\Method\SFAMWLM053023SMA.M
 Quant Title : SFAM01.0

TIC Library : C:\Database\NIST20.L
 TIC Integration Parameters: LSCINT.P

 Peak Number 4 (DEL) Alkane: Cyclic12.775 Concentration Rank 27

R.T.	EstConc	Area	Relative to ISTD	R.T.
12.775	4.71 ug/L	219153	1,4-Dichlorobenzene-d4	13.556

Hit#	of	5	Tentative ID	MW	MolForm	CAS#	Qual
1			Cyclohexane, 1,1,4,4-tetramethyl-	140	C10H20	002223-52-1	38
2			Cyclopentane, (2-methylpropyl)-	126	C9H18	003788-32-7	38
3			Zinc, bis[2-(1,1-dimethylethyl)-...]	314	C18H34Zn	074793-36-5	38
4			1-Hexene, 3,3,5-trimethyl-	126	C9H18	013427-43-5	38
5			Cyclohexane, 1,2,3-trimethyl-, (...)	126	C9H18	001678-81-5	38



Data Path : Z:\voasrv\HPCHEM1\MSVOA_W\Data\VW060923\
 Data File : VW026163.D
 Acq On : 09 Jun 2023 12:13
 Operator : SY/MD
 Sample : 03101-10RE
 Misc : 5.65g/10mL/MSVOA_W/SOIL
 ALS Vial : 1 Sample Multiplier: 1

Instrument :
 MSVOA_W
 ClientSampleId :
 EZEM6RE

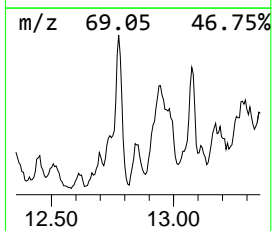
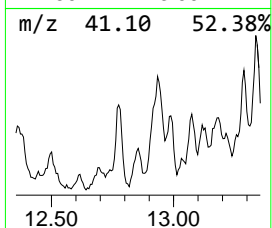
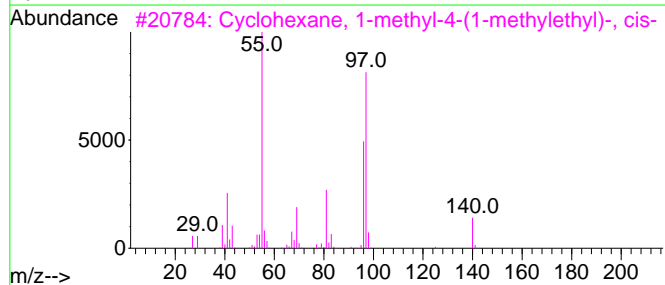
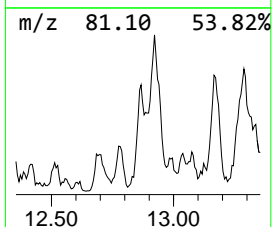
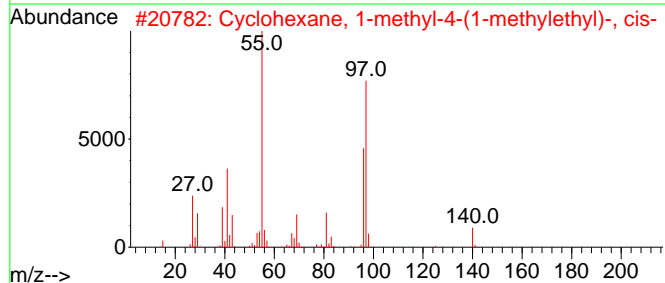
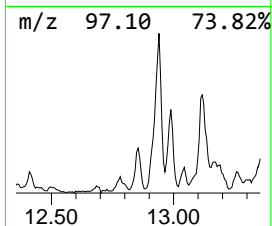
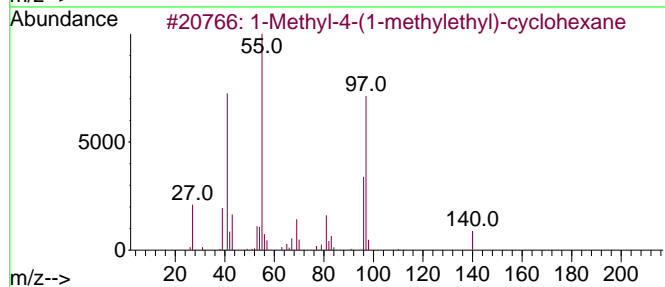
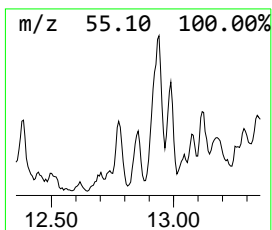
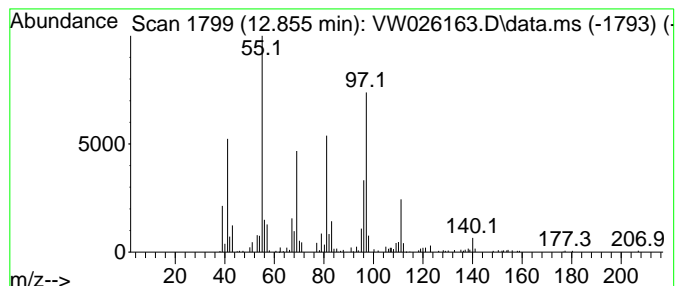
Quant Method : Z:\voasrv\HPCHEM1\MSVOA_W\Method\SFAMWLM053023SMA.M
 Quant Title : SFAM01.0

TIC Library : C:\Database\NIST20.L
 TIC Integration Parameters: LSCINT.P

 Peak Number 5 (DEL) Alkane: Cyclic12.855 Concentration Rank 34

R.T.	EstConc	Area	Relative to ISTD	R.T.
12.855	2.50 ug/L	116172	1,4-Dichlorobenzene-d4	13.556

Hit#	of 5	Tentative ID	MW	MolForm	CAS#	Qual
1		1-Methyl-4-(1-methylethyl)-cyclo...	140	C10H20	000099-82-1	58
2		Cyclohexane, 1-methyl-4-(1-methy...	140	C10H20	006069-98-3	58
3		Cyclohexane, 1-methyl-4-(1-methy...	140	C10H20	006069-98-3	53
4		m-Menthane, (1S,3S)-(+)-	140	C10H20	013837-67-7	53
5		Oxalic acid, butyl cyclohexylmet...	242	C13H22O4	1000309-68-2	53



Data Path : Z:\voasrv\HPCHEM1\MSVOA_W\Data\VW060923\
 Data File : VW026163.D
 Acq On : 09 Jun 2023 12:13
 Operator : SY/MD
 Sample : 03101-10RE
 Misc : 5.65g/10mL/MSVOA_W/SOIL
 ALS Vial : 1 Sample Multiplier: 1

Instrument :
 MSVOA_W
 ClientSampleId :
 EZEM6RE

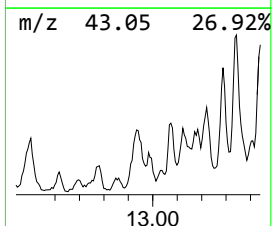
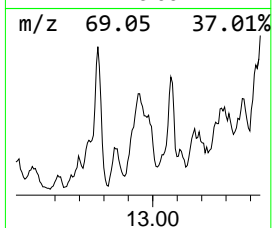
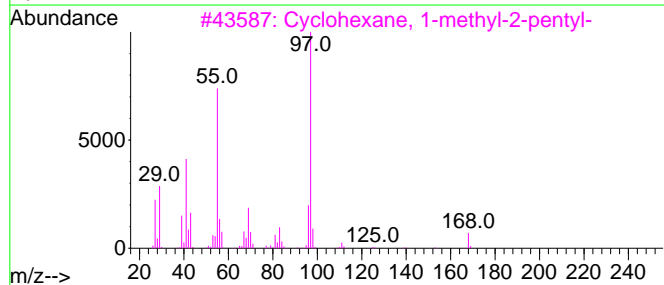
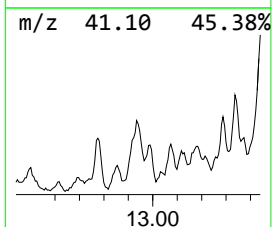
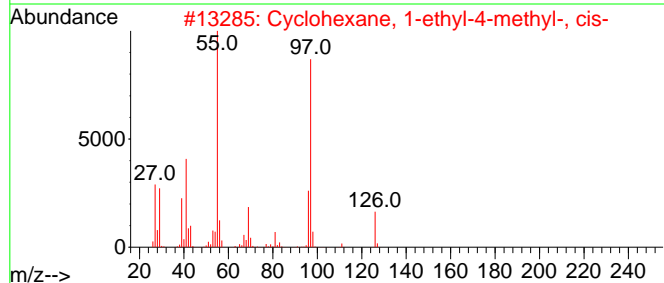
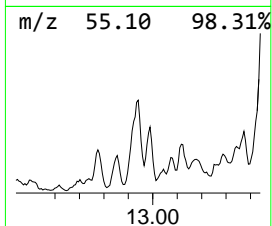
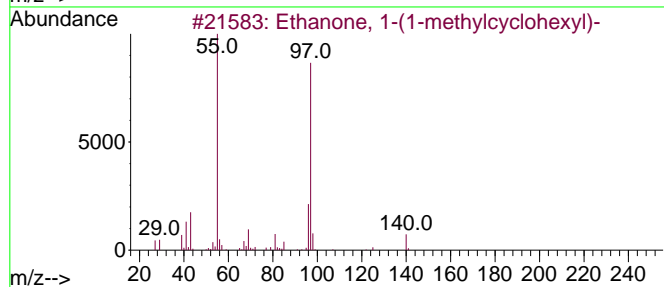
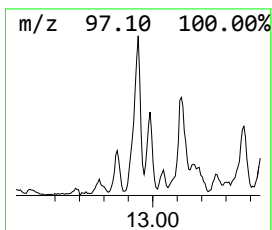
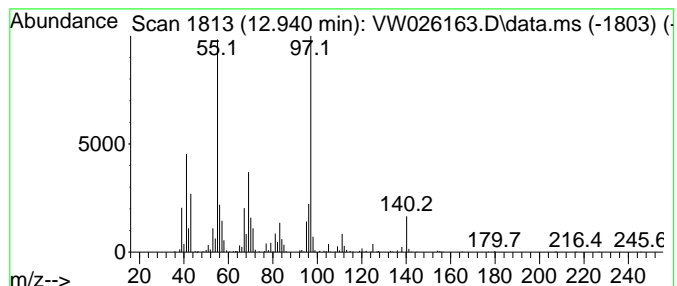
Quant Method : Z:\voasrv\HPCHEM1\MSVOA_W\Method\SFAMWLM053023SMA.M
 Quant Title : SFAM01.0

TIC Library : C:\Database\NIST20.L
 TIC Integration Parameters: LSCINT.P

 Peak Number 6 Ethanone, 1-(1-methylcyclohexyl)- Concentration Rank 17

R.T.	EstConc	Area	Relative to ISTD	R.T.
12.940	8.35 ug/L	388166	1,4-Dichlorobenzene-d4	13.556

Hit#	of	5	Tentative ID	MW	MolForm	CAS#	Qual
1			Ethanone, 1-(1-methylcyclohexyl)-	140	C9H16O	002890-62-2	64
2			Cyclohexane, 1-ethyl-4-methyl-, ...	126	C9H18	004926-78-7	53
3			Cyclohexane, 1-methyl-2-pentyl-	168	C12H24	054411-01-7	53
4			Cyclohexane, 1-ethyl-1-methyl-	126	C9H18	004926-90-3	53
5			Cyclohexane, 1-ethyl-4-methyl-, ...	126	C9H18	006236-88-0	53



Data Path : Z:\voasrv\HPCHEM1\MSVOA_W\Data\VW060923\
 Data File : VW026163.D
 Acq On : 09 Jun 2023 12:13
 Operator : SY/MD
 Sample : 03101-10RE
 Misc : 5.65g/10mL/MSVOA_W/SOIL
 ALS Vial : 1 Sample Multiplier: 1

Instrument :
 MSVOA_W
 ClientSampleId :
 EZEM6RE

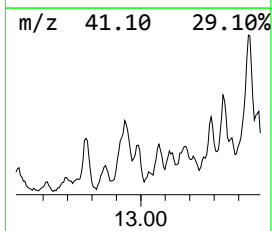
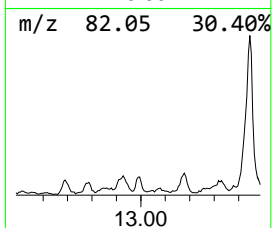
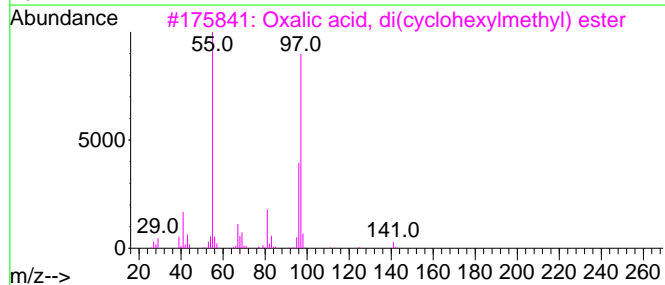
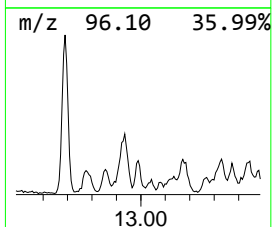
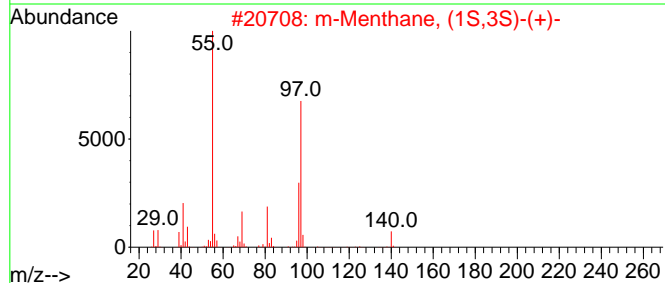
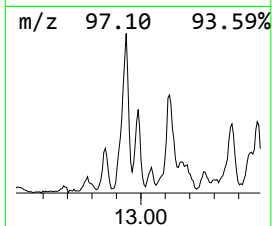
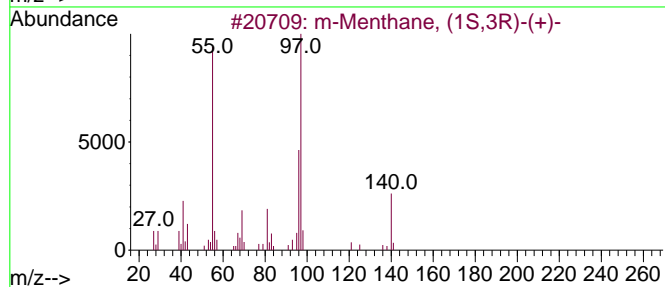
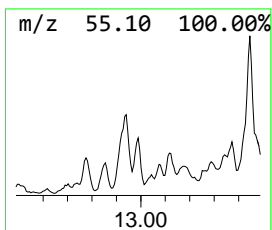
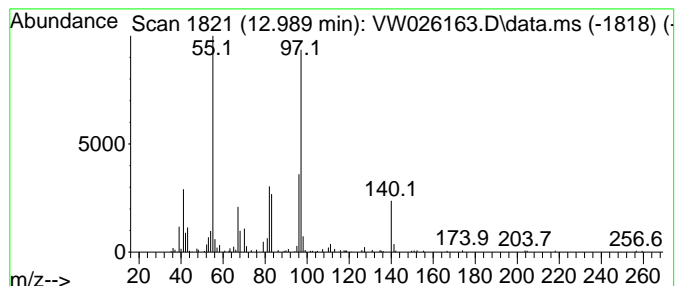
Quant Method : Z:\voasrv\HPCHEM1\MSVOA_W\Method\SFAMWLM053023SMA.M
 Quant Title : SFAM01.0

TIC Library : C:\Database\NIST20.L
 TIC Integration Parameters: LSCINT.P

 Peak Number 7 (DEL) Alkane: Straight-Chai... Concentration Rank 33

R.T.	EstConc	Area	Relative to ISTD	R.T.
12.989	2.66 ug/L	123735	1,4-Dichlorobenzene-d4	13.556

Hit#	of	5	Tentative ID	MW	MolForm	CAS#	Qual
1			m-Menthane, (1S,3R)-(+)-	140	C10H20	013837-66-6	53
2			m-Menthane, (1S,3S)-(+)-	140	C10H20	013837-67-7	53
3			Oxalic acid, di(cyclohexylmethyl)...	282	C16H26O4	1000309-68-5	50
4			Cyclohexane, (bromomethyl)-	176	C7H13Br	002550-36-9	47
5			Cyclohexane, 1-methyl-2-propyl-	140	C10H20	004291-79-6	47



Data Path : Z:\voasrv\HPCHEM1\MSVOA_W\Data\VW060923\
 Data File : VW026163.D
 Acq On : 09 Jun 2023 12:13
 Operator : SY/MD
 Sample : 03101-10RE
 Misc : 5.65g/10mL/MSVOA_W/SOIL
 ALS Vial : 1 Sample Multiplier: 1

Instrument :
 MSVOA_W
 ClientSampleId :
 EZEM6RE

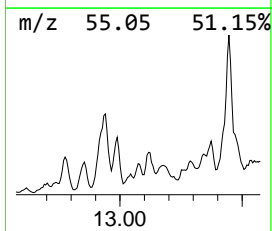
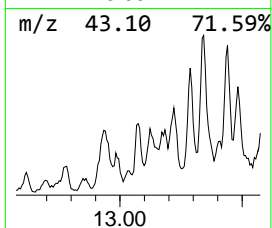
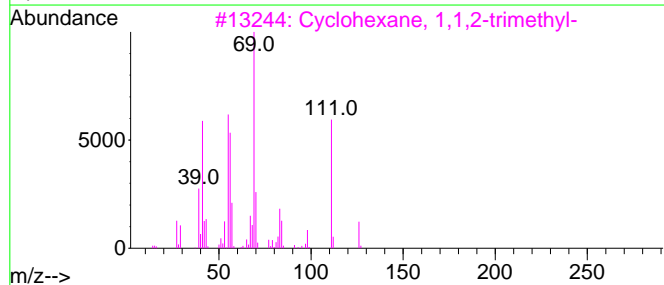
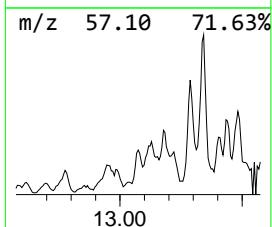
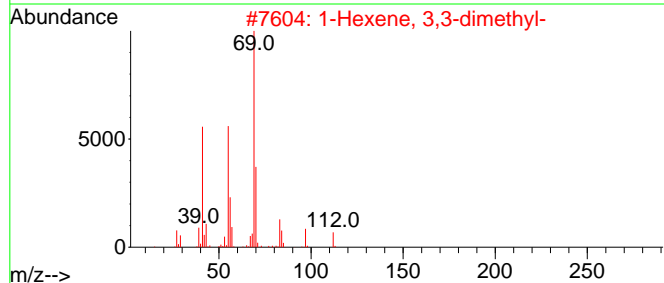
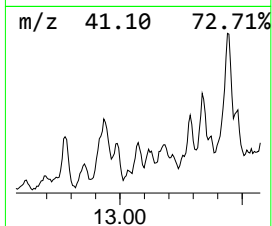
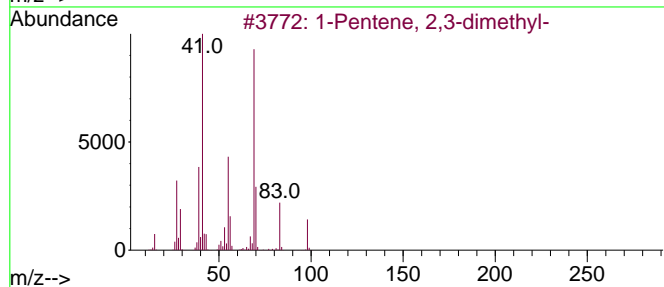
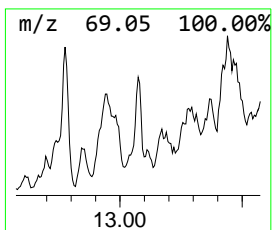
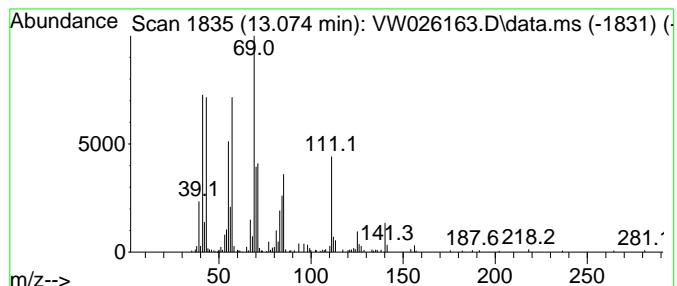
Quant Method : Z:\voasrv\HPCHEM1\MSVOA_W\Method\SFAMWLM053023SMA.M
 Quant Title : SFAM01.0

TIC Library : C:\Database\NIST20.L
 TIC Integration Parameters: LSCINT.P

 Peak Number 8 (DEL) Alkane: Straight-Chai... Concentration Rank 36

R.T.	EstConc	Area	Relative to ISTD	R.T.
13.074	2.13 ug/L	98862	1,4-Dichlorobenzene-d4	13.556

Hit#	of 5	Tentative ID	MW	MolForm	CAS#	Qual
1		1-Pentene, 2,3-dimethyl-	98	C7H14	003404-72-6	46
2		1-Hexene, 3,3-dimethyl-	112	C8H16	003404-77-1	43
3		Cyclohexane, 1,1,2-trimethyl-	126	C9H18	007094-26-0	43
4		1,1,4-Trimethylcyclohexane	126	C9H18	007094-27-1	38
5		Cyclohexane, 1,3,5-trimethyl-, (...)	126	C9H18	001795-27-3	38



Data Path : Z:\voasrv\HPCHEM1\MSVOA_W\Data\VW060923\
 Data File : VW026163.D
 Acq On : 09 Jun 2023 12:13
 Operator : SY/MD
 Sample : 03101-10RE
 Misc : 5.65g/10mL/MSVOA_W/SOIL
 ALS Vial : 1 Sample Multiplier: 1

Instrument :
 MSVOA_W
 ClientSampleId :
 EZEM6RE

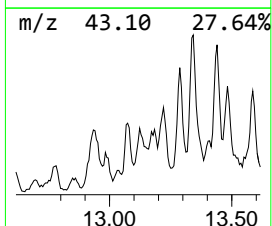
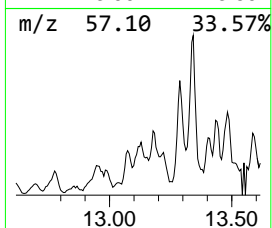
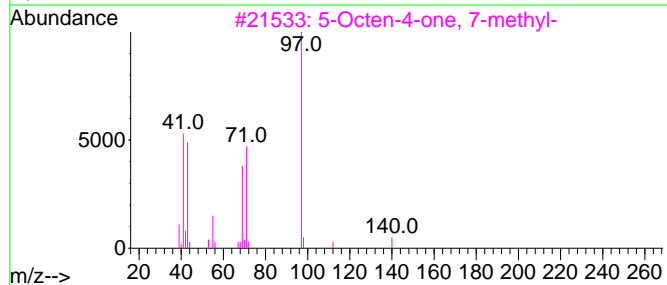
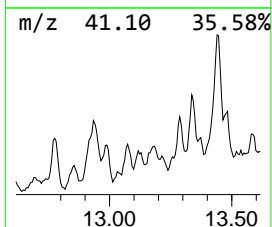
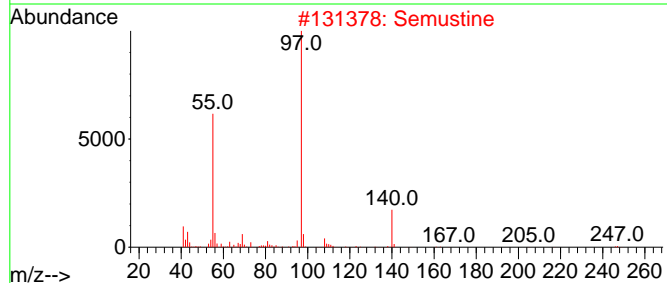
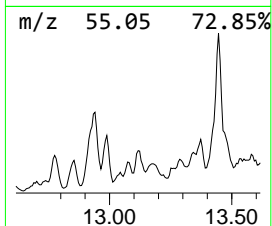
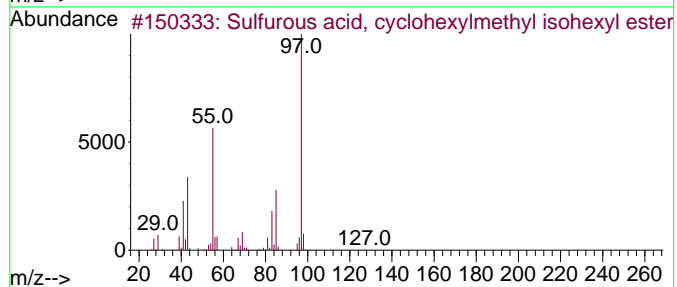
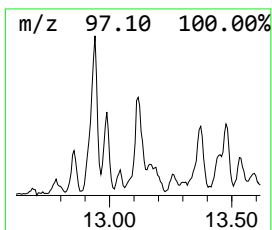
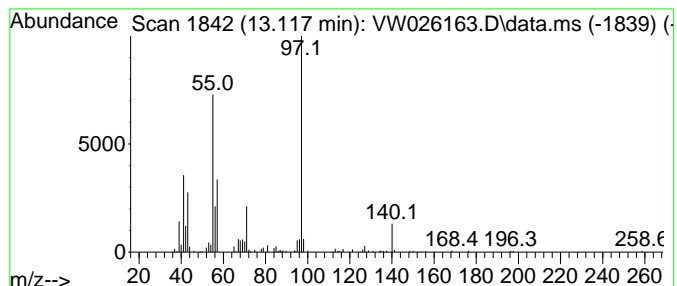
Quant Method : Z:\voasrv\HPCHEM1\MSVOA_W\Method\SFAMWLM053023SMA.M
 Quant Title : SFAM01.0

TIC Library : C:\Database\NIST20.L
 TIC Integration Parameters: LSCINT.P

 Peak Number 9 Sulfurous acid, cyclohexylm... Concentration Rank 38

R.T.	EstConc	Area	Relative to ISTD	R.T.
13.117	1.37 ug/L	63728	1,4-Dichlorobenzene-d4	13.556

Hit#	of 5	Tentative ID	MW	MolForm	CAS#	Qual
1		Sulfurous acid, cyclohexylmethyl...	262	C13H26O3S	1000309-21-5	53
2		Semustine	247	C10H18ClN3O2	013909-09-6	53
3		5-Octen-4-one, 7-methyl-	140	C9H16O	032064-78-1	50
4		2,4-Dimethyl-1,5-diazabicyclo[3...	112	C6H12N2	1000283-20-9	50
5		2-Pyrazoline, 1-butyl-5-methyl-	140	C8H16N2	022581-50-6	50



Data Path : Z:\voasrv\HPCHEM1\MSVOA_W\Data\VW060923\
 Data File : VW026163.D
 Acq On : 09 Jun 2023 12:13
 Operator : SY/MD
 Sample : 03101-10RE
 Misc : 5.65g/10mL/MSVOA_W/SOIL
 ALS Vial : 1 Sample Multiplier: 1

Instrument :
 MSVOA_W
 ClientSampleId :
 EZEM6RE

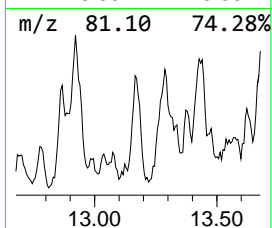
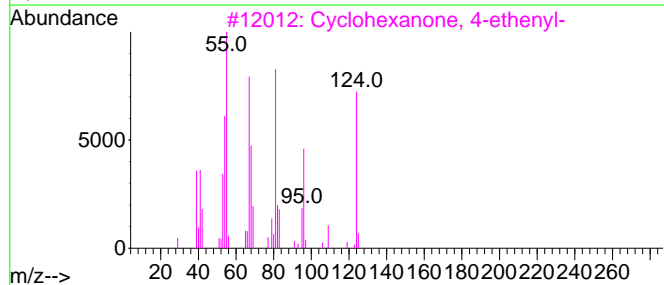
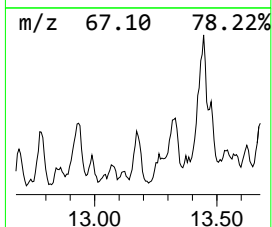
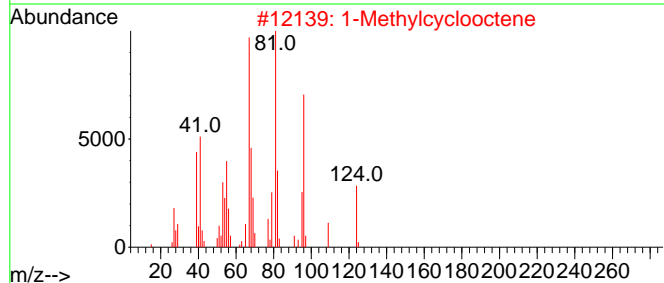
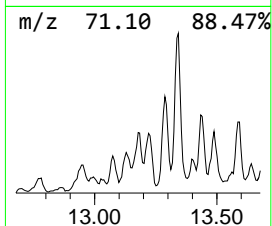
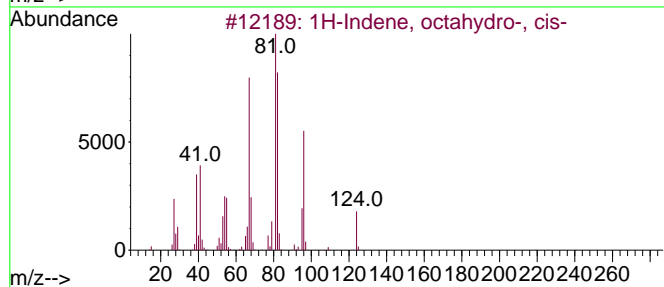
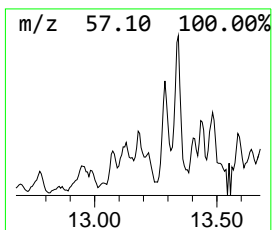
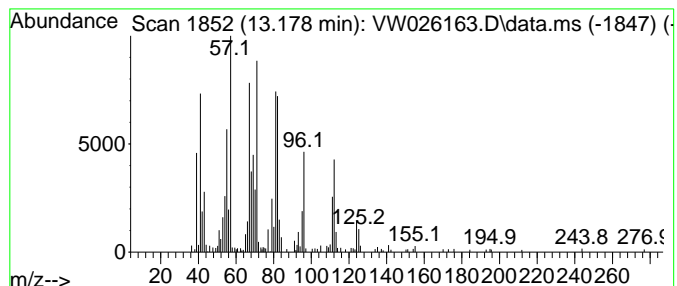
Quant Method : Z:\voasrv\HPCHEM1\MSVOA_W\Method\SFAMWLM053023SMA.M
 Quant Title : SFAM01.0

TIC Library : C:\Database\NIST20.L
 TIC Integration Parameters: LSCINT.P

 Peak Number 10 1H-Indene, octahydro-, cis- Concentration Rank 35

R.T.	EstConc	Area	Relative to ISTD	R.T.
13.178	2.20 ug/L	102269	1,4-Dichlorobenzene-d4	13.556

Hit#	of 5	Tentative ID	MW	MolForm	CAS#	Qual
1		1H-Indene, octahydro-, cis-	124	C9H16	004551-51-3	78
2		1-Methylcyclooctene	124	C9H16	000933-11-9	70
3		Cyclohexanone, 4-ethenyl-	124	C8H12O	001740-64-3	64
4		1H-Indene, octahydro-	124	C9H16	000496-10-6	60
5		Cyclooctene, 3-methyl-	124	C9H16	013152-05-1	46



Data Path : Z:\voasrv\HPCHEM1\MSVOA_W\Data\VW060923\
 Data File : VW026163.D
 Acq On : 09 Jun 2023 12:13
 Operator : SY/MD
 Sample : 03101-10RE
 Misc : 5.65g/10mL/MSVOA_W/SOIL
 ALS Vial : 1 Sample Multiplier: 1

Instrument :
 MSVOA_W
 ClientSampleId :
 EZEM6RE

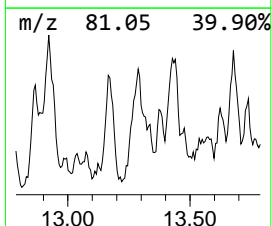
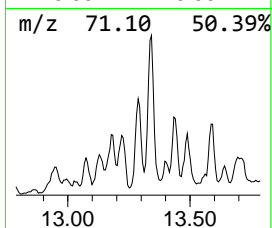
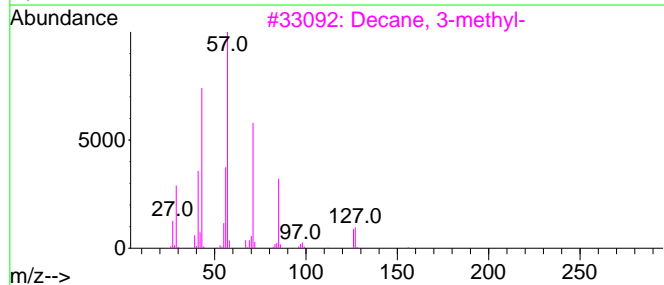
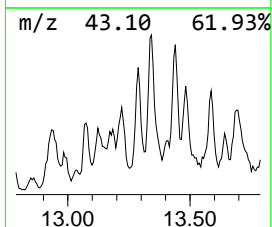
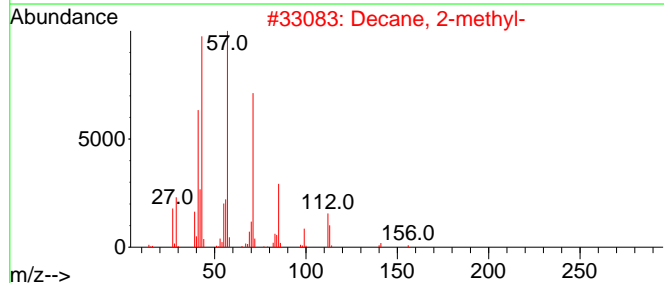
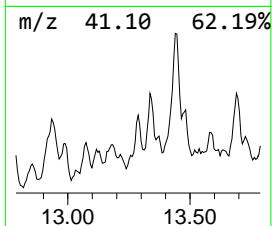
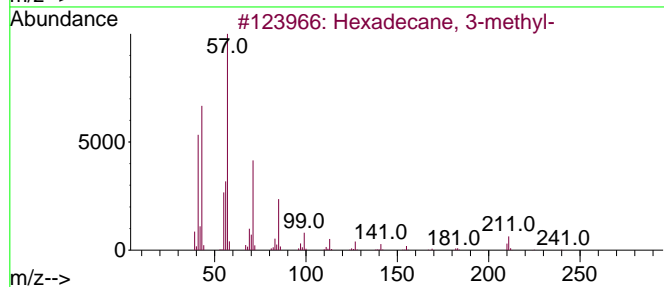
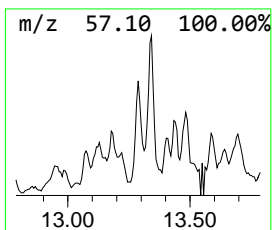
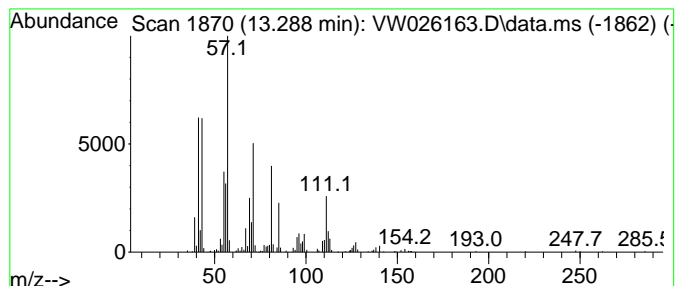
Quant Method : Z:\voasrv\HPCHEM1\MSVOA_W\Method\SFAMWLM053023SMA.M
 Quant Title : SFAM01.0

TIC Library : C:\Database\NIST20.L
 TIC Integration Parameters: LSCINT.P

 Peak Number 11 (DEL) Alkane: Straight-Chai... Concentration Rank 26

R.T.	EstConc	Area	Relative to ISTD	R.T.
13.288	4.85 ug/L	225465	1,4-Dichlorobenzene-d4	13.556

Hit#	of 5	Tentative ID	MW	MolForm	CAS#	Qual
1		Hexadecane, 3-methyl-	240	C17H36	006418-43-5	59
2		Decane, 2-methyl-	156	C11H24	006975-98-0	58
3		Decane, 3-methyl-	156	C11H24	013151-34-3	58
4		Tridecane, 3-methyl-	198	C14H30	006418-41-3	53
5		Nonane, 3,7-dimethyl-	156	C11H24	017302-32-8	53



Data Path : Z:\voasrv\HPCHEM1\MSVOA_W\Data\VW060923\
 Data File : VW026163.D
 Acq On : 09 Jun 2023 12:13
 Operator : SY/MD
 Sample : 03101-10RE
 Misc : 5.65g/10mL/MSVOA_W/SOIL
 ALS Vial : 1 Sample Multiplier: 1

Instrument :
 MSVOA_W
 ClientSampleId :
 EZEM6RE

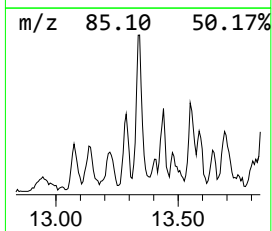
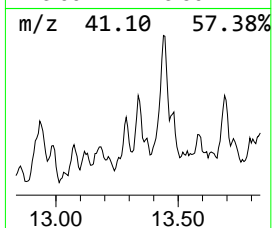
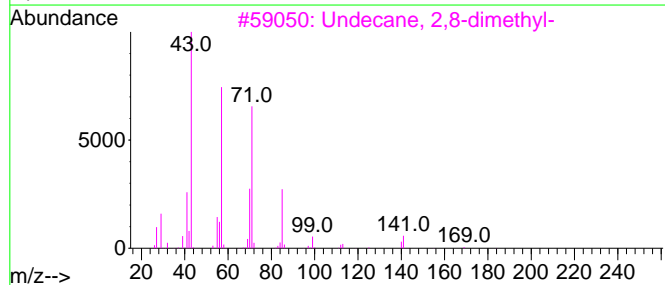
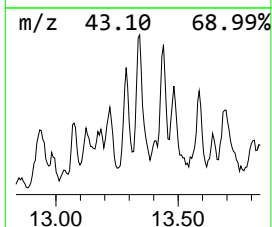
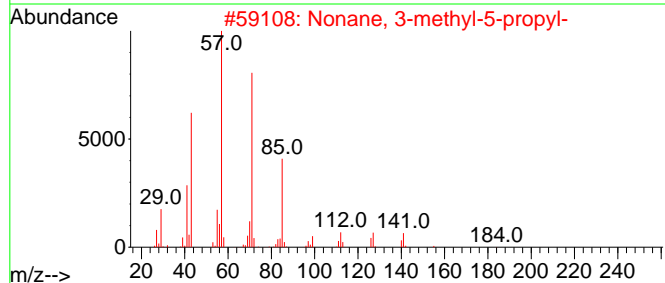
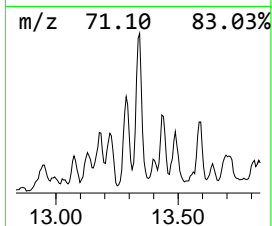
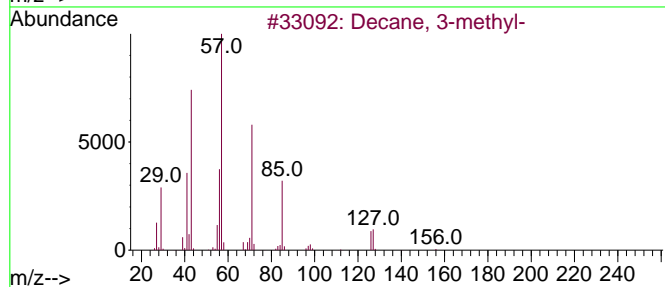
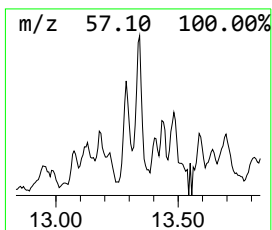
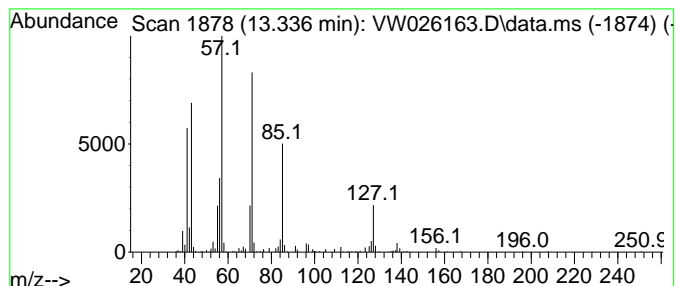
Quant Method : Z:\voasrv\HPCHEM1\MSVOA_W\Method\SFAMWLM053023SMA.M
 Quant Title : SFAM01.0

TIC Library : C:\Database\NIST20.L
 TIC Integration Parameters: LSCINT.P

 Peak Number 12 (DEL) Alkane: Straight-Chai... Concentration Rank 30

R.T.	EstConc	Area	Relative to ISTD	R.T.
13.336	3.29 ug/L	153088	1,4-Dichlorobenzene-d4	13.556

Hit#	of 5	Tentative ID	MW	MolForm	CAS#	Qual
1		Decane, 3-methyl-	156	C11H24	013151-34-3	87
2		Nonane, 3-methyl-5-propyl-	184	C13H28	031081-18-2	59
3		Undecane, 2,8-dimethyl-	184	C13H28	017301-25-6	53
4		Heptane, 2,4-dimethyl-	128	C9H20	002213-23-2	53
5		Undecane, 5-methyl-	170	C12H26	001632-70-8	53



Data Path : Z:\voasrv\HPCHEM1\MSVOA_W\Data\VW060923\
 Data File : VW026163.D
 Acq On : 09 Jun 2023 12:13
 Operator : SY/MD
 Sample : 03101-10RE
 Misc : 5.65g/10mL/MSVOA_W/SOIL
 ALS Vial : 1 Sample Multiplier: 1

Instrument :
 MSVOA_W
 ClientSampleId :
 EZEM6RE

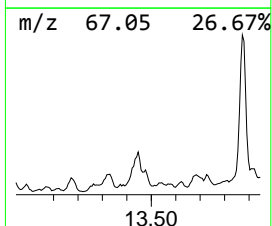
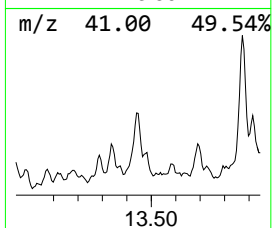
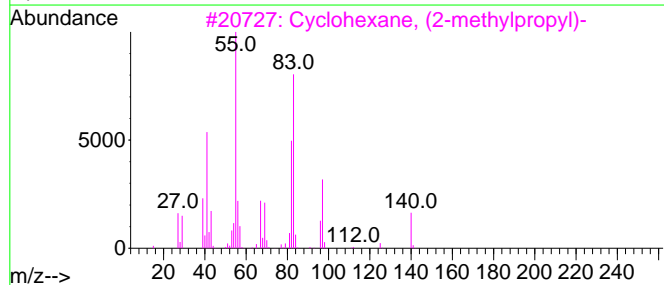
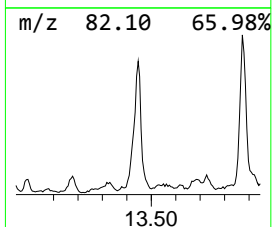
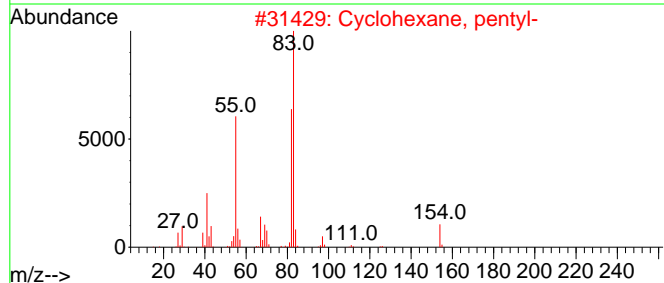
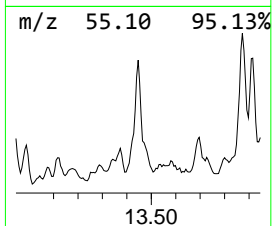
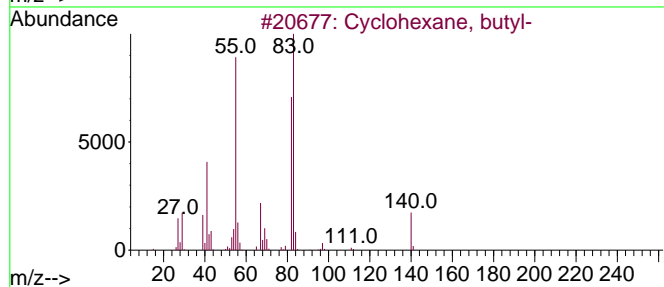
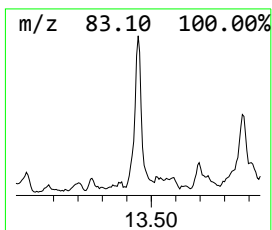
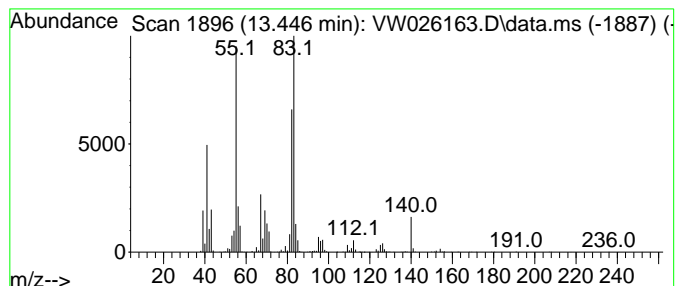
Quant Method : Z:\voasrv\HPCHEM1\MSVOA_W\Method\SFAMWLM053023SMA.M
 Quant Title : SFAM01.0

TIC Library : C:\Database\NIST20.L
 TIC Integration Parameters: LSCINT.P

 Peak Number 13 (DEL) Alkane: Cyclic13.446 Concentration Rank 12

R.T.	EstConc	Area	Relative to ISTD	R.T.
13.446	12.12 ug/L	563722	1,4-Dichlorobenzene-d4	13.556

Hit#	of 5	Tentative ID	MW	MolForm	CAS#	Qual
1		Cyclohexane, butyl-	140	C10H20	001678-93-9	90
2		Cyclohexane, pentyl-	154	C11H22	004292-92-6	87
3		Cyclohexane, (2-methylpropyl)-	140	C10H20	001678-98-4	87
4		Cyclohexane, butyl-	140	C10H20	001678-93-9	87
5		Cyclohexane, (2-methylpropyl)-	140	C10H20	001678-98-4	86



Data Path : Z:\voasrv\HPCHEM1\MSVOA_W\Data\VW060923\
 Data File : VW026163.D
 Acq On : 09 Jun 2023 12:13
 Operator : SY/MD
 Sample : 03101-10RE
 Misc : 5.65g/10mL/MSVOA_W/SOIL
 ALS Vial : 1 Sample Multiplier: 1

Instrument :
 MSVOA_W
 ClientSampleId :
 EZEM6RE

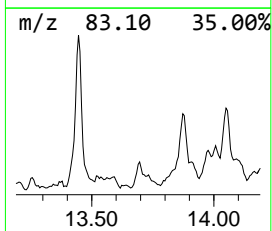
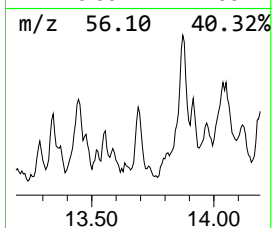
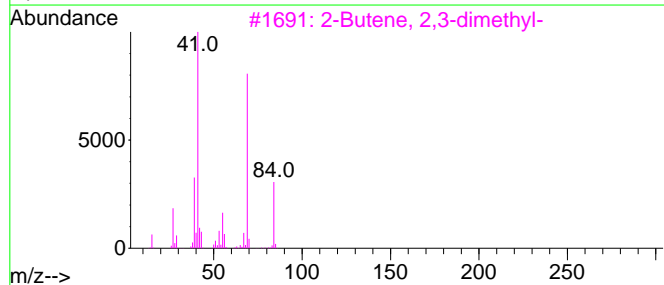
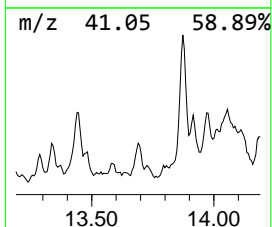
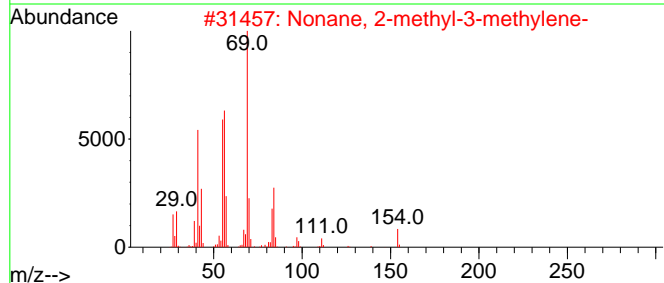
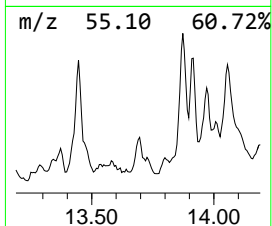
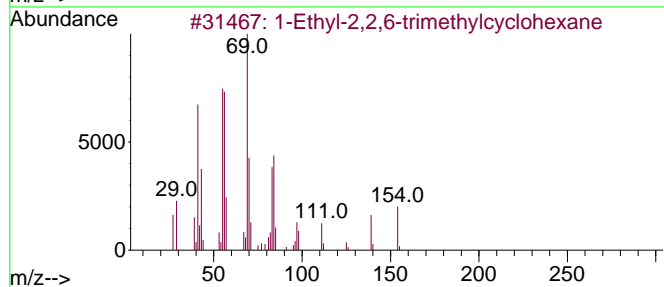
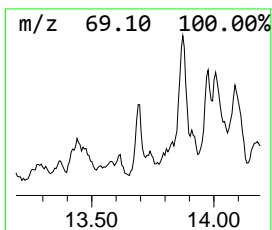
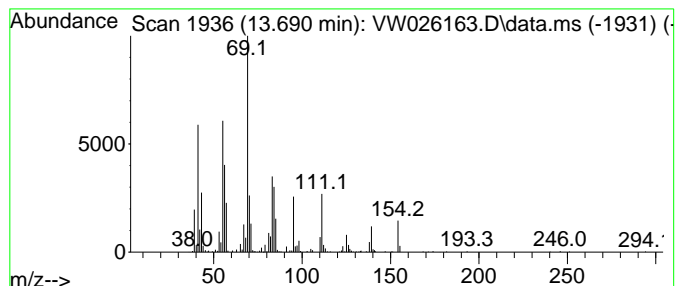
Quant Method : Z:\voasrv\HPCHEM1\MSVOA_W\Method\SFAMWLM053023SMA.M
 Quant Title : SFAM01.0

TIC Library : C:\Database\NIST20.L
 TIC Integration Parameters: LSCINT.P

 Peak Number 14 (DEL) Alkane: Cyclic13.690 Concentration Rank 24

R.T.	EstConc	Area	Relative to ISTD	R.T.
13.690	5.61 ug/L	261087	1,4-Dichlorobenzene-d4	13.556

Hit#	of 5	Tentative ID	MW	MolForm	CAS#	Qual
1		1-Ethyl-2,2,6-trimethylcyclohexane	154	C11H22	071186-27-1	55
2		Nonane, 2-methyl-3-methylene-	154	C11H22	055499-08-6	49
3		2-Butene, 2,3-dimethyl-	84	C6H12	000563-79-1	38
4		3-Methyl-3-hexene	98	C7H14	003404-65-7	38
5		2-Decene, 2-methyl-	154	C11H22	023381-92-2	38



Data Path : Z:\voasrv\HPCHEM1\MSVOA_W\Data\VW060923\
 Data File : VW026163.D
 Acq On : 09 Jun 2023 12:13
 Operator : SY/MD
 Sample : 03101-10RE
 Misc : 5.65g/10mL/MSVOA_W/SOIL
 ALS Vial : 1 Sample Multiplier: 1

Instrument :
 MSVOA_W
 ClientSampleId :
 EZEM6RE

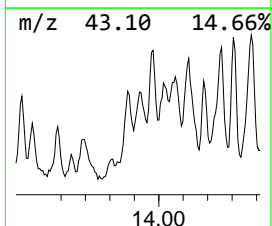
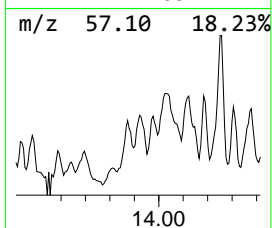
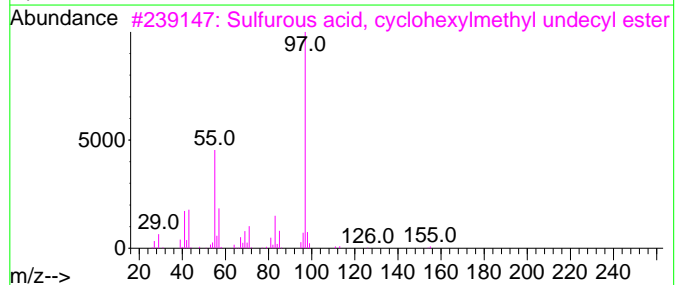
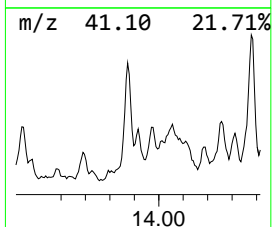
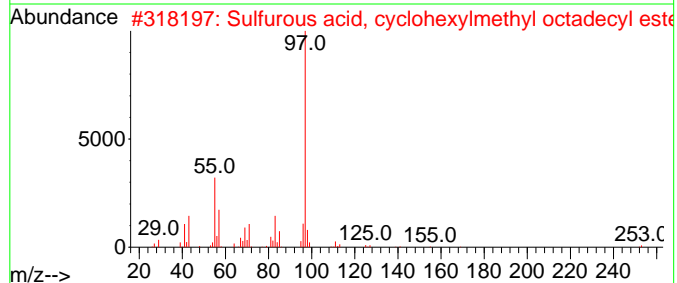
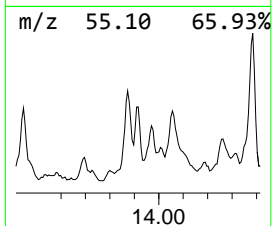
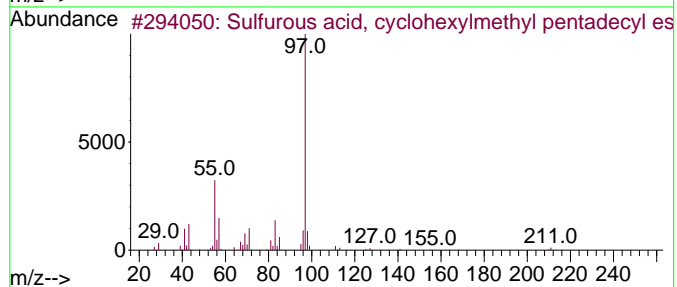
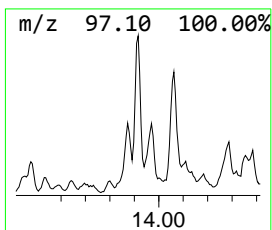
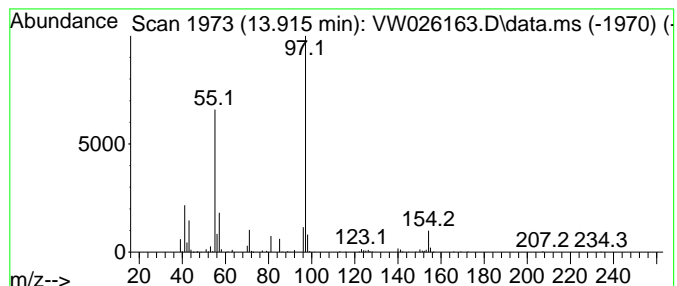
Quant Method : Z:\voasrv\HPCHEM1\MSVOA_W\Method\SFAMWLM053023SMA.M
 Quant Title : SFAM01.0

TIC Library : C:\Database\NIST20.L
 TIC Integration Parameters: LSCINT.P

 Peak Number 15 Sulfurous acid, cyclohexylm... Concentration Rank 23

R.T.	EstConc	Area	Relative to ISTD	R.T.
13.916	5.73 ug/L	266575	1,4-Dichlorobenzene-d4	13.556

Hit#	of 5	Tentative ID	MW	MolForm	CAS#	Qual
1		Sulfurous acid, cyclohexylmethyl...	388	C22H44O3S	1000309-22-3	78
2		Sulfurous acid, cyclohexylmethyl...	430	C25H50O3S	1000309-22-6	72
3		Sulfurous acid, cyclohexylmethyl...	332	C18H36O3S	1000309-21-9	72
4		Sulfurous acid, cyclohexylmethyl...	346	C19H38O3S	1000309-22-0	64
5		Sulfurous acid, cyclohexylmethyl...	360	C20H40O3S	1000309-22-1	64



Data Path : Z:\voasrv\HPCHEM1\MSVOA_W\Data\VW060923\
 Data File : VW026163.D
 Acq On : 09 Jun 2023 12:13
 Operator : SY/MD
 Sample : 03101-10RE
 Misc : 5.65g/10mL/MSVOA_W/SOIL
 ALS Vial : 1 Sample Multiplier: 1

Instrument :
 MSVOA_W
 ClientSampleId :
 EZEM6RE

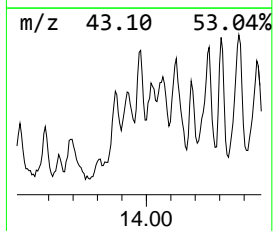
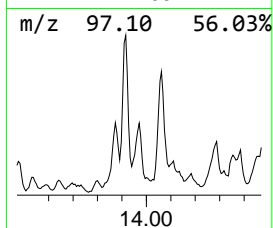
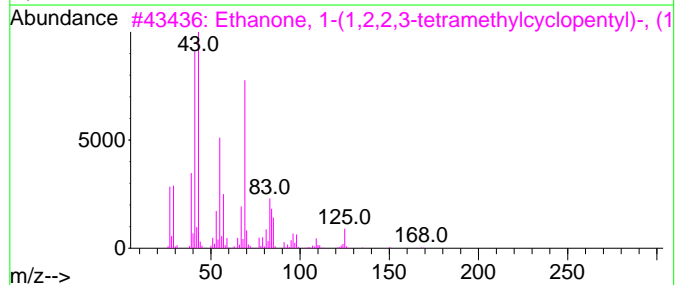
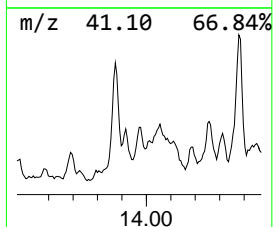
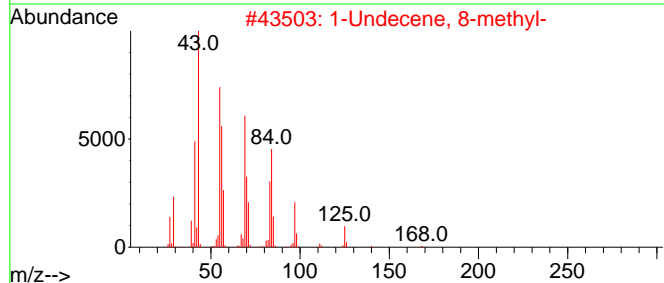
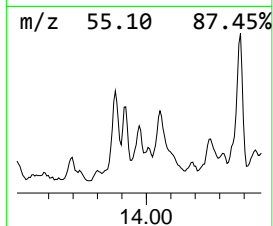
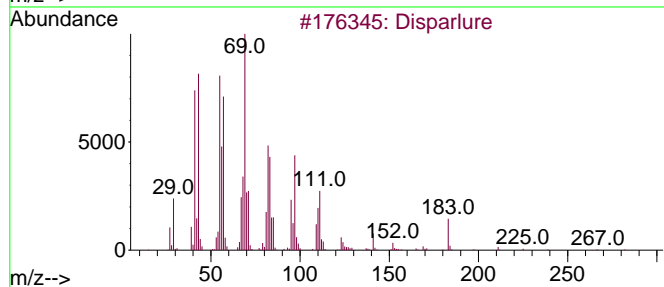
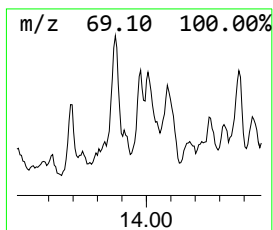
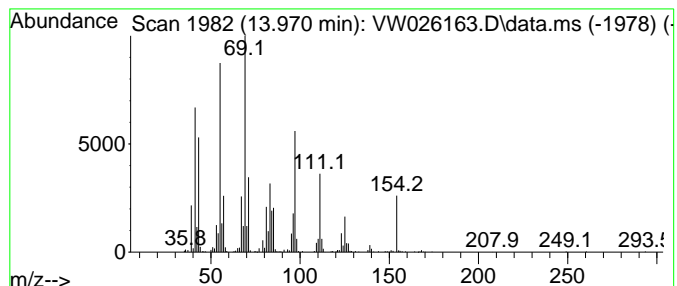
Quant Method : Z:\voasrv\HPCHEM1\MSVOA_W\Method\SFAMWLM053023SMA.M
 Quant Title : SFAM01.0

TIC Library : C:\Database\NIST20.L
 TIC Integration Parameters: LSCINT.P

 Peak Number 16 Disparlure Concentration Rank 22

R.T.	EstConc	Area	Relative to ISTD	R.T.
13.970	6.13 ug/L	285132	1,4-Dichlorobenzene-d4	13.556

Hit#	of 5	Tentative ID	MW	MolForm	CAS#	Qual
1		Disparlure	282	C19H38O	029804-22-6	64
2		1-Undecene, 8-methyl-	168	C12H24	074630-40-3	46
3		Ethanone, 1-(1,2,2,3-tetramethyl...)	168	C11H20O	059642-07-8	43
4		Cyclohexanone, 4-ethyl-3,4-dimet...	154	C10H18O	017429-42-4	38
5		Crotyl methacrylate	140	C8H12O2	007376-45-6	38



Data Path : Z:\voasrv\HPCHEM1\MSVOA_W\Data\VW060923\
 Data File : VW026163.D
 Acq On : 09 Jun 2023 12:13
 Operator : SY/MD
 Sample : 03101-10RE
 Misc : 5.65g/10mL/MSVOA_W/SOIL
 ALS Vial : 1 Sample Multiplier: 1

Instrument :
 MSVOA_W
 ClientSampleId :
 EZEM6RE

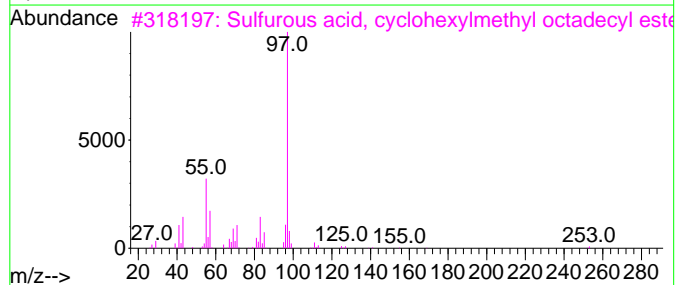
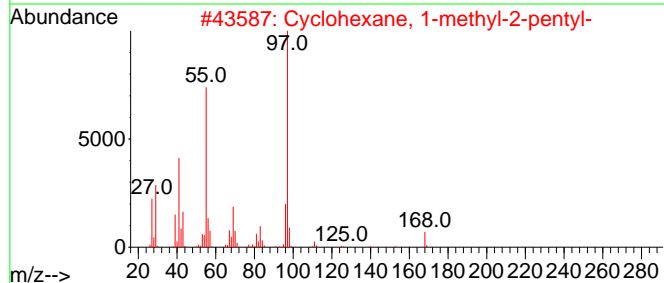
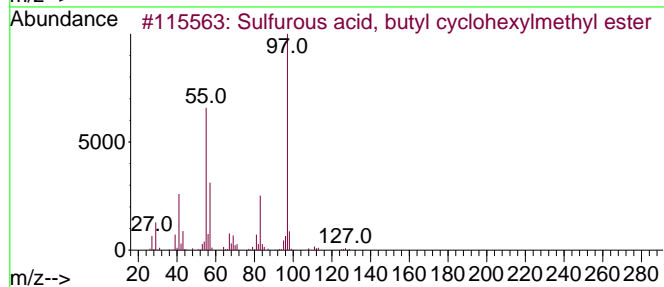
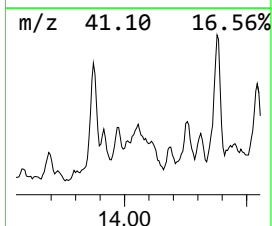
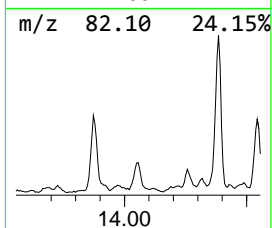
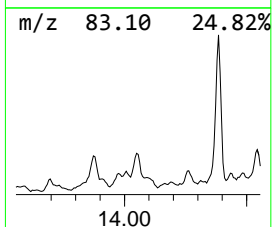
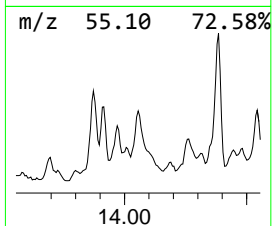
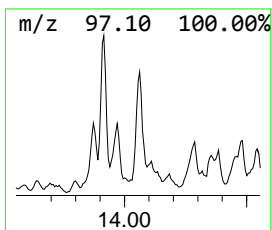
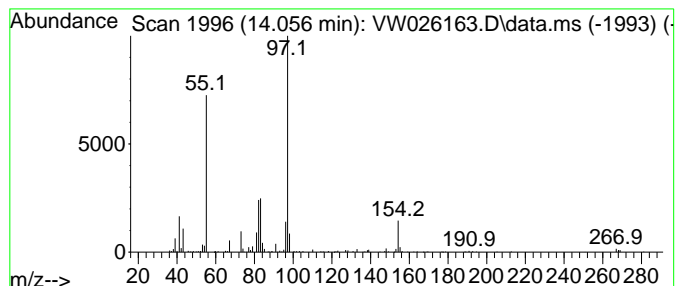
Quant Method : Z:\voasrv\HPCHEM1\MSVOA_W\Method\SFAMWLM053023SMA.M
 Quant Title : SFAM01.0

TIC Library : C:\Database\NIST20.L
 TIC Integration Parameters: LSCINT.P

 Peak Number 17 Sulfurous acid, butyl cyclo... Concentration Rank 32

R.T.	EstConc	Area	Relative to ISTD	R.T.
14.056	2.83 ug/L	131678	1,4-Dichlorobenzene-d4	13.556

Hit#	of 5	Tentative ID	MW	MolForm	CAS#	Qual
1		Sulfurous acid, butyl cyclohexyl...	234	C11H22O3S	1000309-21-4	59
2		Cyclohexane, 1-methyl-2-pentyl-	168	C12H24	054411-01-7	53
3		Sulfurous acid, cyclohexylmethyl...	430	C25H50O3S	1000309-22-6	53
4		Cyclohexane, 1,4-dimethyl-	112	C8H16	000589-90-2	47
5		Cyclohexane, 1-bromo-4-methyl-	176	C7H13Br	006294-40-2	47



Data Path : Z:\voasrv\HPCHEM1\MSVOA_W\Data\VW060923\
 Data File : VW026163.D
 Acq On : 09 Jun 2023 12:13
 Operator : SY/MD
 Sample : 03101-10RE
 Misc : 5.65g/10mL/MSVOA_W/SOIL
 ALS Vial : 1 Sample Multiplier: 1

Instrument :
 MSVOA_W
 ClientSampleId :
 EZEM6RE

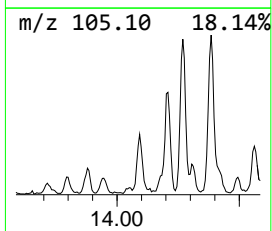
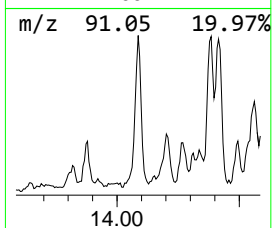
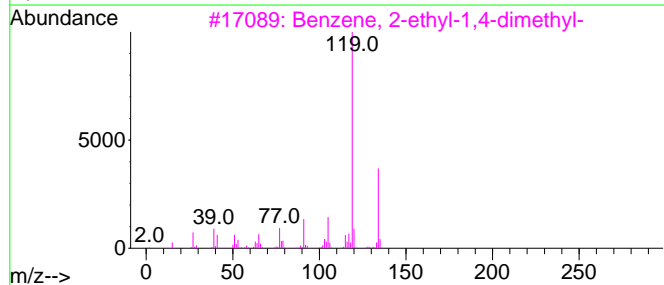
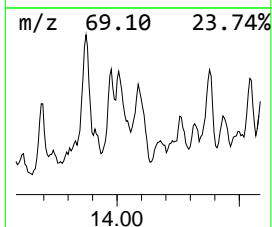
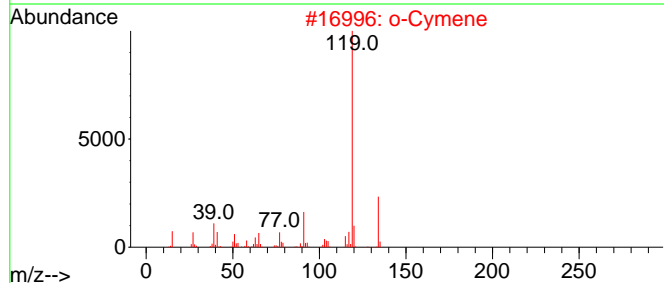
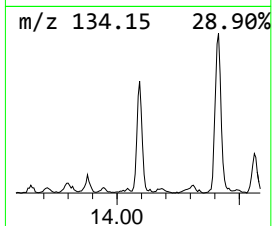
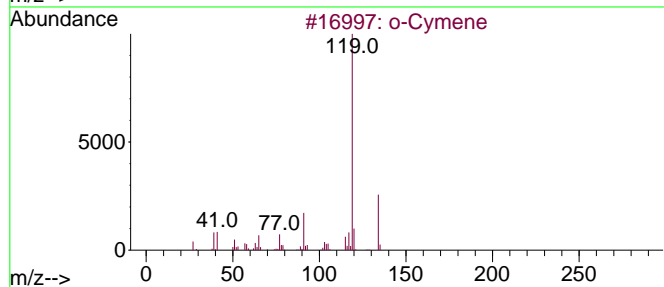
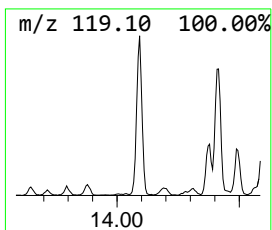
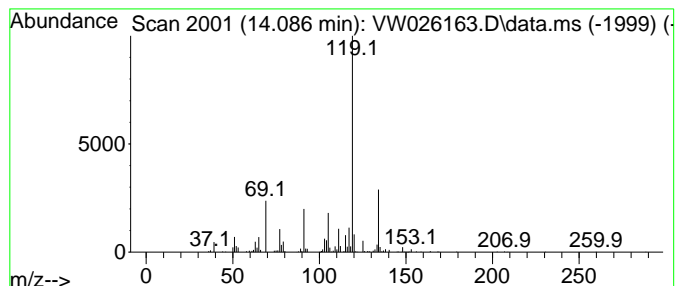
Quant Method : Z:\voasrv\HPCHEM1\MSVOA_W\Method\SFAMWLM053023SMA.M
 Quant Title : SFAM01.0

TIC Library : C:\Database\NIST20.L
 TIC Integration Parameters: LSCINT.P

 Peak Number 18 o-Cymene Concentration Rank 11

R.T.	EstConc	Area	Relative to ISTD	R.T.
14.086	12.77 ug/L	593688	1,4-Dichlorobenzene-d4	13.556

Hit#	of	5	Tentative ID	MW	MolForm	CAS#	Qual
1			o-Cymene	134	C10H14	000527-84-4	94
2			o-Cymene	134	C10H14	000527-84-4	94
3			Benzene, 2-ethyl-1,4-dimethyl-	134	C10H14	001758-88-9	90
4			Benzene, 4-ethyl-1,2-dimethyl-	134	C10H14	000934-80-5	87
5			Benzene, 2-ethyl-1,4-dimethyl-	134	C10H14	001758-88-9	87



Data Path : Z:\voasrv\HPCHEM1\MSVOA_W\Data\VW060923\
 Data File : VW026163.D
 Acq On : 09 Jun 2023 12:13
 Operator : SY/MD
 Sample : 03101-10RE
 Misc : 5.65g/10mL/MSVOA_W/SOIL
 ALS Vial : 1 Sample Multiplier: 1

Instrument :
 MSVOA_W
 ClientSampleId :
 EZEM6RE

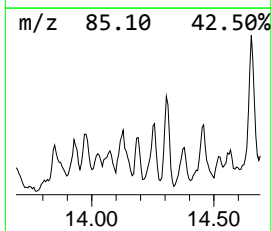
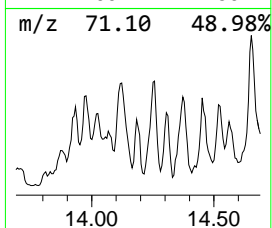
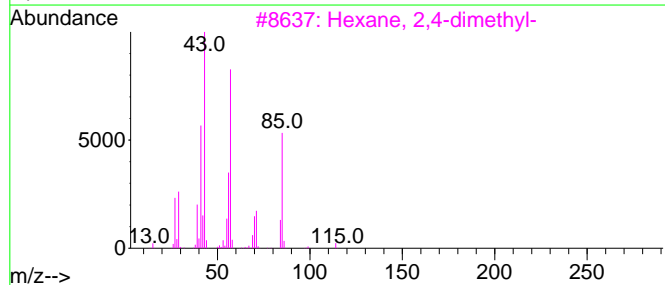
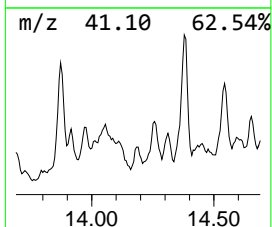
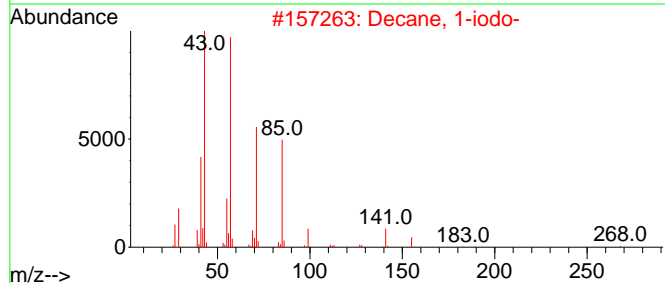
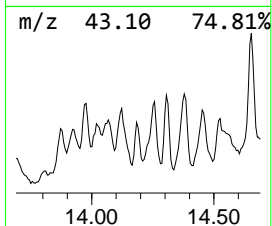
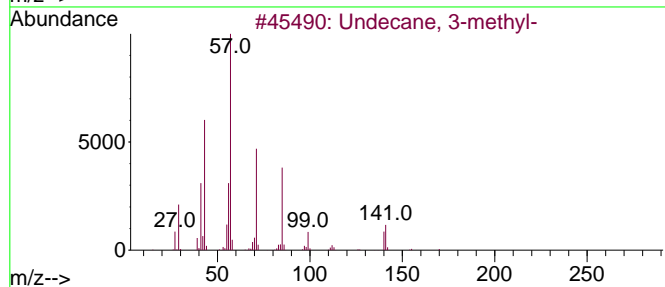
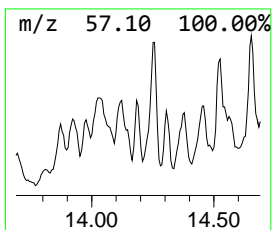
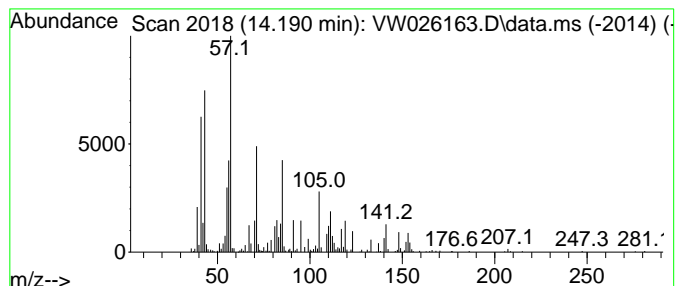
Quant Method : Z:\voasrv\HPCHEM1\MSVOA_W\Method\SFAMWLM053023SMA.M
 Quant Title : SFAM01.0

TIC Library : C:\Database\NIST20.L
 TIC Integration Parameters: LSCINT.P

 Peak Number 19 (DEL) Alkane: Straight-Chai... Concentration Rank 25

R.T.	EstConc	Area	Relative to ISTD	R.T.
14.190	5.06 ug/L	235171	1,4-Dichlorobenzene-d4	13.556

Hit#	of	5	Tentative ID	MW	MolForm	CAS#	Qual
1			Undecane, 3-methyl-	170	C12H26	001002-43-3	62
2			Decane, 1-iodo-	268	C10H21I	002050-77-3	38
3			Hexane, 2,4-dimethyl-	114	C8H18	000589-43-5	38
4			Hexane, 2,4-dimethyl-	114	C8H18	000589-43-5	38
5			Decane, 2,3,5-trimethyl-	184	C13H28	062238-11-3	38



Data Path : Z:\voasrv\HPCHEM1\MSVOA_W\Data\VW060923\
 Data File : VW026163.D
 Acq On : 09 Jun 2023 12:13
 Operator : SY/MD
 Sample : 03101-10RE
 Misc : 5.65g/10mL/MSVOA_W/SOIL
 ALS Vial : 1 Sample Multiplier: 1

Instrument :
 MSVOA_W
 ClientSampleId :
 EZEM6RE

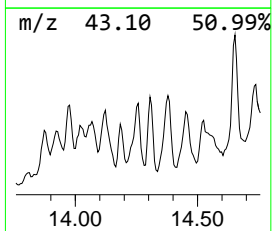
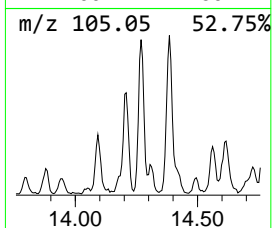
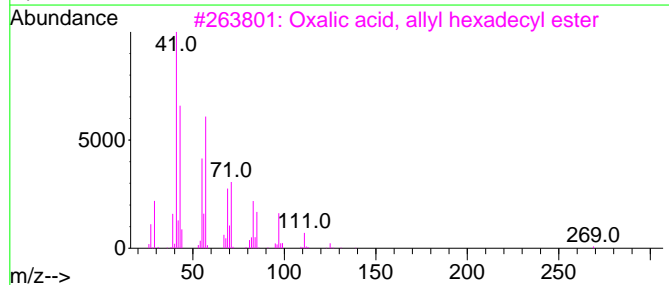
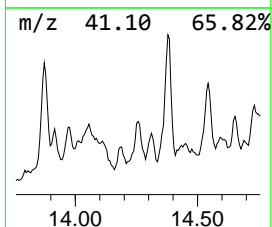
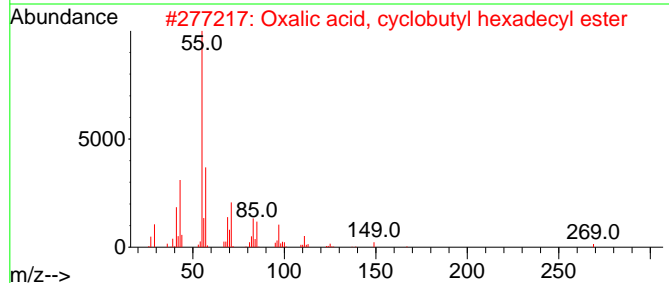
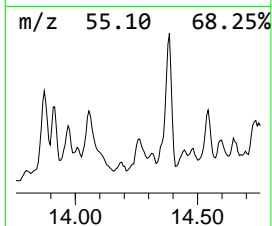
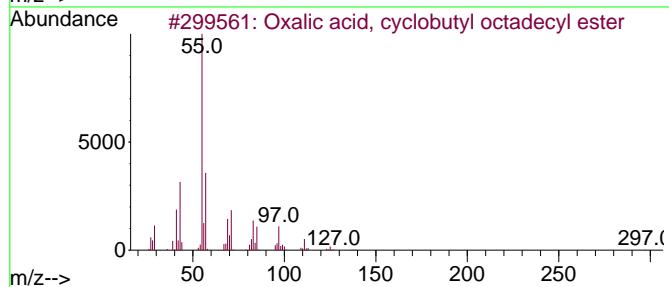
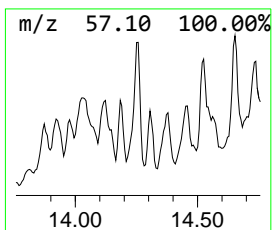
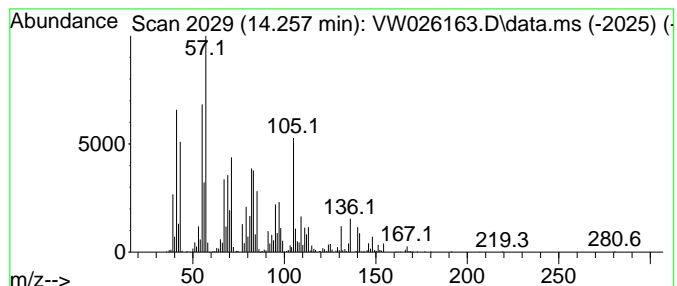
Quant Method : Z:\voasrv\HPCHEM1\MSVOA_W\Method\SFAMWLM053023SMA.M
 Quant Title : SFAM01.0

TIC Library : C:\Database\NIST20.L
 TIC Integration Parameters: LSCINT.P

 Peak Number 20 unknown-01 Concentration Rank 16

R.T.	EstConc	Area	Relative to ISTD	R.T.
14.257	8.99 ug/L	417847	1,4-Dichlorobenzene-d4	13.556

Hit#	of 5	Tentative ID	MW	MolForm	CAS#	Qual
1		Oxalic acid, cyclobutyl octadecyl...	396	C24H44O4	1000309-70-8	46
2		Oxalic acid, cyclobutyl hexadecyl...	368	C22H40O4	1000309-70-6	46
3		Oxalic acid, allyl hexadecyl ester	354	C21H38O4	1000309-24-4	43
4		Oxalic acid, cyclobutyl heptadec...	382	C23H42O4	1000309-70-7	43
5		Oxalic acid, cyclobutyl tetradec...	340	C20H36O4	1000309-70-9	43



Data Path : Z:\voasrv\HPCHEM1\MSVOA_W\Data\VW060923\
 Data File : VW026163.D
 Acq On : 09 Jun 2023 12:13
 Operator : SY/MD
 Sample : 03101-10RE
 Misc : 5.65g/10mL/MSVOA_W/SOIL
 ALS Vial : 1 Sample Multiplier: 1

Instrument :
 MSVOA_W
 ClientSampleId :
 EZEM6RE

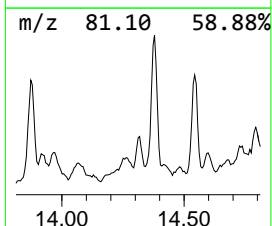
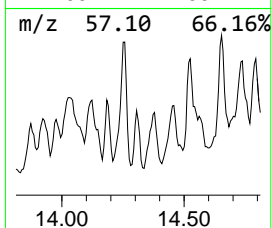
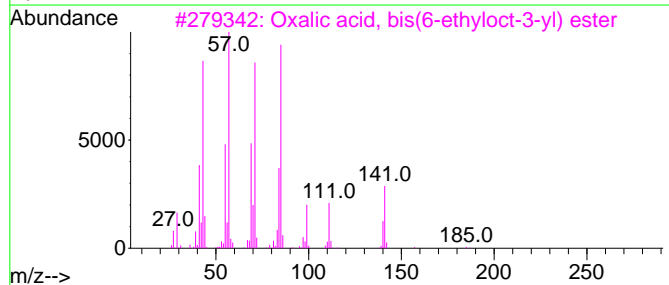
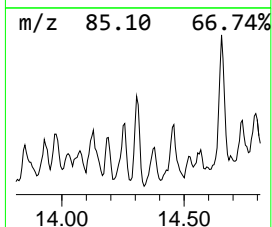
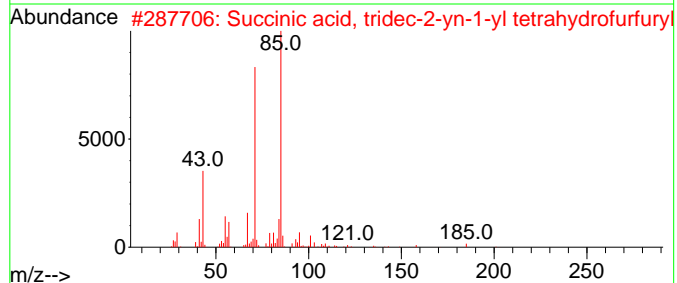
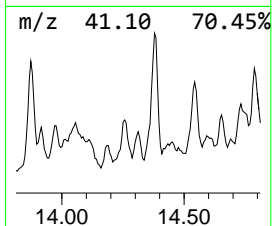
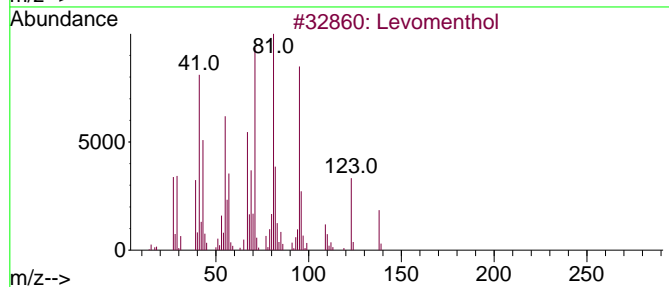
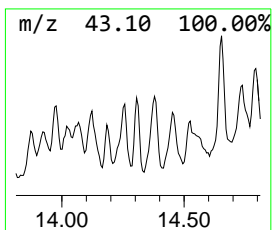
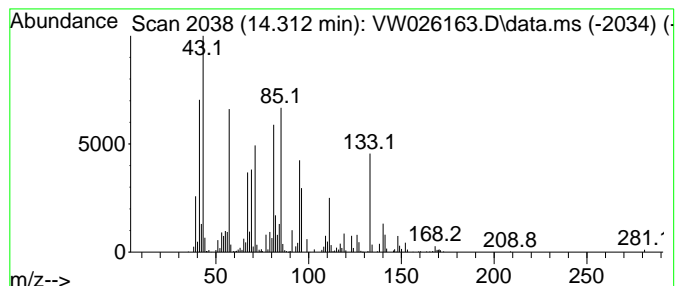
Quant Method : Z:\voasrv\HPCHEM1\MSVOA_W\Method\SFAMWLM053023SMA.M
 Quant Title : SFAM01.0

TIC Library : C:\Database\NIST20.L
 TIC Integration Parameters: LSCINT.P

 Peak Number 21 unknown-02 Concentration Rank 29

R.T.	EstConc	Area	Relative to ISTD	R.T.
14.312	4.01 ug/L	186364	1,4-Dichlorobenzene-d4	13.556

Hit#	of	5	Tentative ID	MW	MolForm	CAS#	Qual
1			Levomenthol	156	C10H20O	002216-51-5	35
2			Succinic acid, tridec-2-yn-1-yl ...	380	C22H36O5	1000390-72-9	27
3			Oxalic acid, bis(6-ethyloct-3-yl...)	370	C22H42O4	1000309-34-6	27
4			Succinic acid, 2-methylpent-3-yl...	286	C15H26O5	1010390-71-5	27
5			Bicyclo[3.1.0]hexan-2-one, 5-(1-...	138	C9H14O	000513-20-2	25



Data Path : Z:\voasrv\HPCHEM1\MSVOA_W\Data\VW060923\
 Data File : VW026163.D
 Acq On : 09 Jun 2023 12:13
 Operator : SY/MD
 Sample : 03101-10RE
 Misc : 5.65g/10mL/MSVOA_W/SOIL
 ALS Vial : 1 Sample Multiplier: 1

Instrument :
 MSVOA_W
 ClientSampleId :
 EZEM6RE

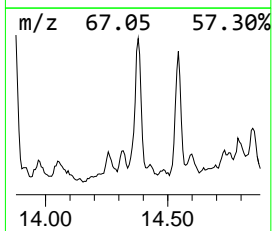
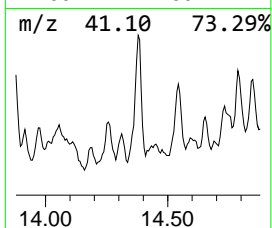
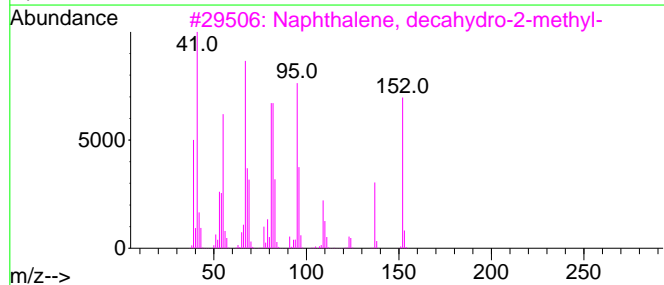
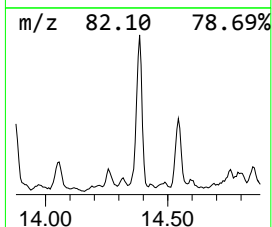
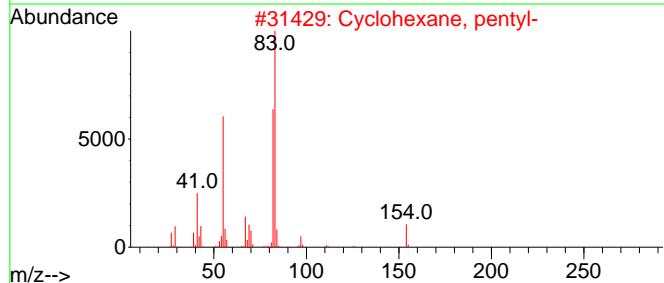
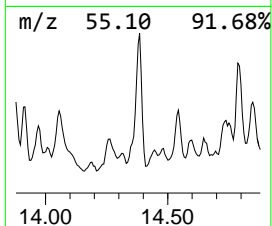
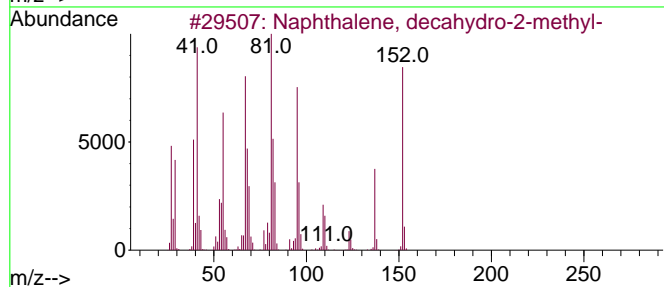
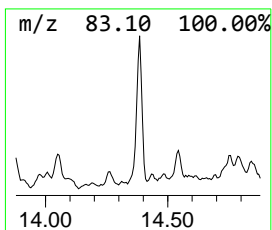
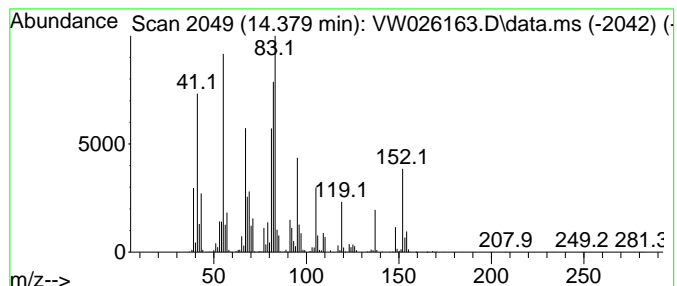
Quant Method : Z:\voasrv\HPCHEM1\MSVOA_W\Method\SFAMWLM053023SMA.M
 Quant Title : SFAM01.0

TIC Library : C:\Database\NIST20.L
 TIC Integration Parameters: LSCINT.P

 Peak Number 22 Naphthalene, decahydro-2-me... Concentration Rank 3

R.T.	EstConc	Area	Relative to ISTD	R.T.
14.379	31.28 ug/L	1454740	1,4-Dichlorobenzene-d4	13.556

Hit#	of 5	Tentative ID	MW	MolForm	CAS#	Qual
1		Naphthalene, decahydro-2-methyl-	152	C11H20	002958-76-1	80
2		Cyclohexane, pentyl-	154	C11H22	004292-92-6	50
3		Naphthalene, decahydro-2-methyl-	152	C11H20	002958-76-1	46
4		1-Methyldecahydronaphthalene	152	C11H20	002958-75-0	46
5		Cyclohexane, pentyl-	154	C11H22	004292-92-6	45



Data Path : Z:\voasrv\HPCHEM1\MSVOA_W\Data\VW060923\
 Data File : VW026163.D
 Acq On : 09 Jun 2023 12:13
 Operator : SY/MD
 Sample : 03101-10RE
 Misc : 5.65g/10mL/MSVOA_W/SOIL
 ALS Vial : 1 Sample Multiplier: 1

Instrument :
 MSVOA_W
 ClientSampleId :
 EZEM6RE

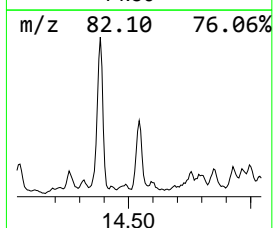
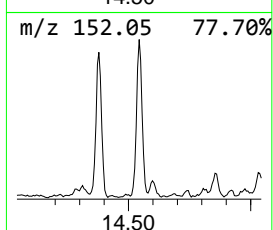
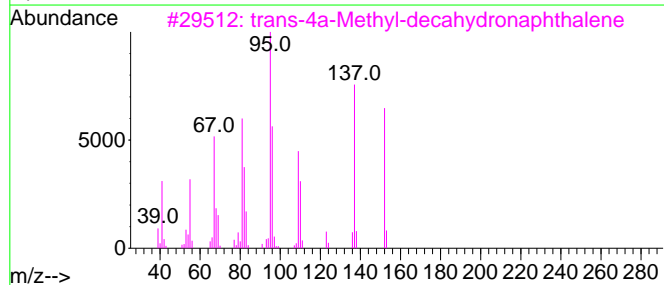
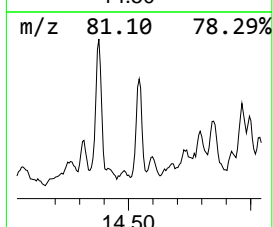
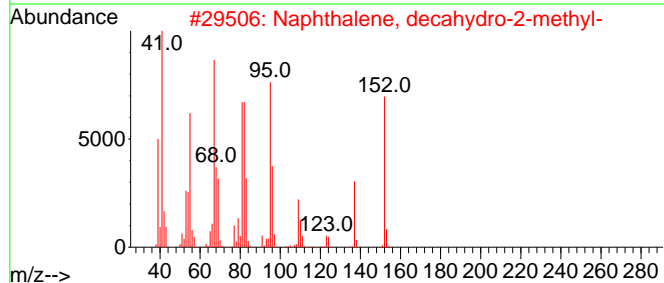
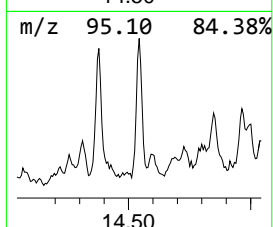
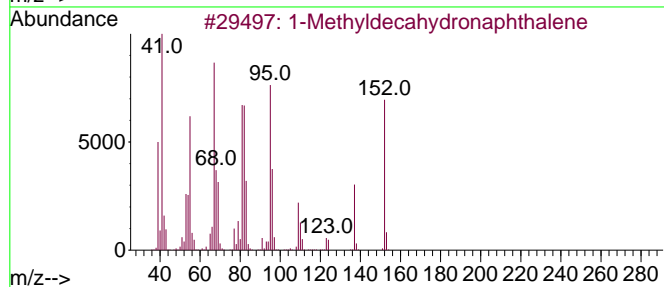
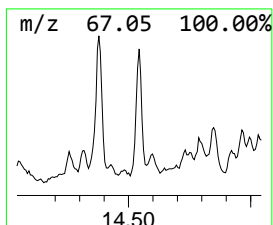
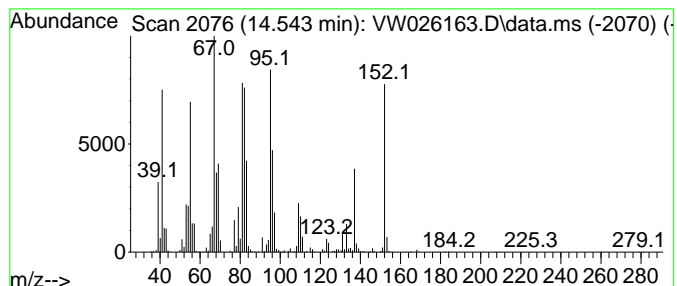
Quant Method : Z:\voasrv\HPCHEM1\MSVOA_W\Method\SFAMWLM053023SMA.M
 Quant Title : SFAM01.0

TIC Library : C:\Database\NIST0.L
 TIC Integration Parameters: LSCINT.P

 Peak Number 23 1-Methyldecahydronaphthalene Concentration Rank 5

R.T.	EstConc	Area	Relative to ISTD	R.T.
14.543	21.80 ug/L	1013520	1,4-Dichlorobenzene-d4	13.556

Hit#	of 5	Tentative ID	MW	MolForm	CAS#	Qual
1		1-Methyldecahydronaphthalene	152	C11H20	002958-75-0	98
2		Naphthalene, decahydro-2-methyl-	152	C11H20	002958-76-1	98
3		trans-4a-Methyl-decahydronaphtha...	152	C11H20	002547-27-5	86
4		Naphthalene, decahydro-2-methyl-	152	C11H20	002958-76-1	83
5		trans-Decalin, 2-methyl-	152	C11H20	1000152-47-3	81



Data Path : Z:\voasrv\HPCHEM1\MSVOA_W\Data\VW060923\
 Data File : VW026163.D
 Acq On : 09 Jun 2023 12:13
 Operator : SY/MD
 Sample : 03101-10RE
 Misc : 5.65g/10mL/MSVOA_W/SOIL
 ALS Vial : 1 Sample Multiplier: 1

Instrument :
 MSVOA_W
 ClientSampleId :
 EZEM6RE

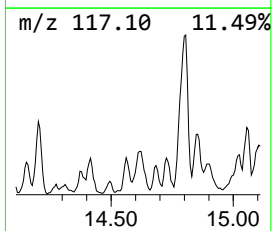
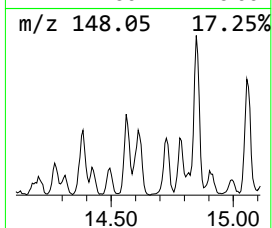
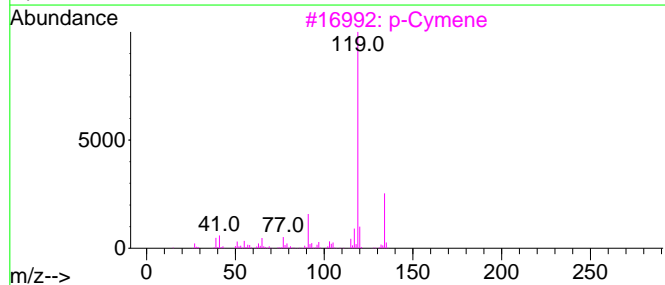
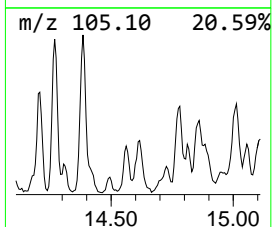
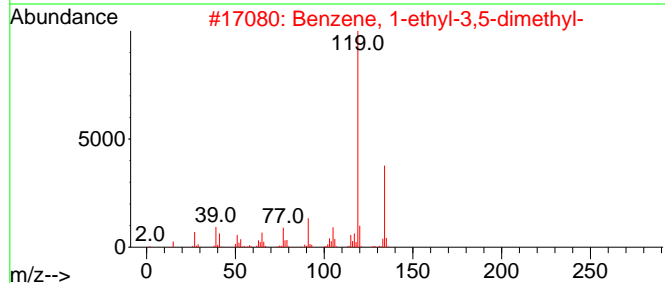
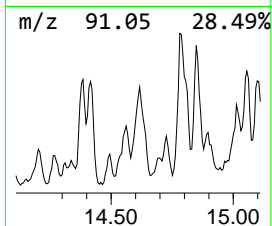
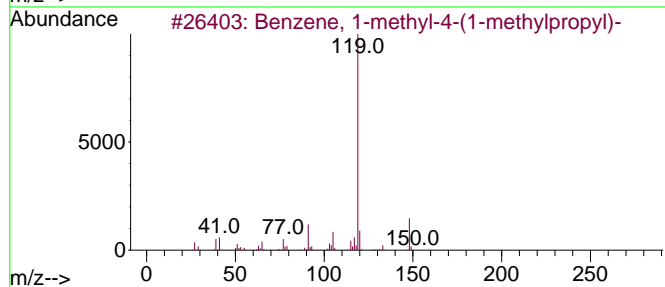
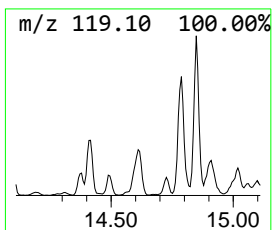
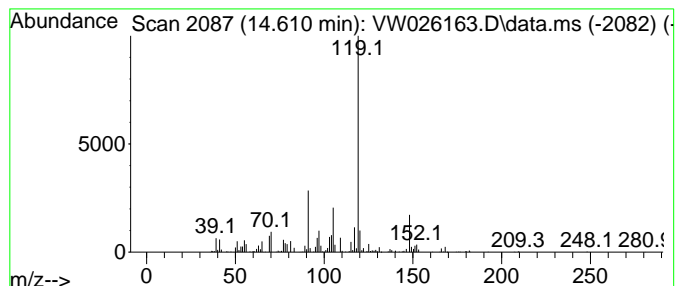
Quant Method : Z:\voasrv\HPCHEM1\MSVOA_W\Method\SFAMWLM053023SMA.M
 Quant Title : SFAM01.0

TIC Library : C:\Database\NIST20.L
 TIC Integration Parameters: LSCINT.P

 Peak Number 24 Benzene, 1-methyl-4-(1-meth... Concentration Rank 28

R.T.	EstConc	Area	Relative to ISTD	R.T.
14.611	4.53 ug/L	210676	1,4-Dichlorobenzene-d4	13.556

Hit#	of 5	Tentative ID	MW	MolForm	CAS#	Qual
1		Benzene, 1-methyl-4-(1-methylpro...	148	C11H16	001595-16-0	64
2		Benzene, 1-ethyl-3,5-dimethyl-	134	C10H14	000934-74-7	59
3		p-Cymene	134	C10H14	000099-87-6	53
4		o-Cymene	134	C10H14	000527-84-4	50
5		1,3,5-Cycloheptatriene, 3,7,7-tr...	134	C10H14	003479-89-8	50



Data Path : Z:\voasrv\HPCHEM1\MSVOA_W\Data\VW060923\
 Data File : VW026163.D
 Acq On : 09 Jun 2023 12:13
 Operator : SY/MD
 Sample : 03101-10RE
 Misc : 5.65g/10mL/MSVOA_W/SOIL
 ALS Vial : 1 Sample Multiplier: 1

Instrument :
 MSVOA_W
 ClientSampleId :
 EZEM6RE

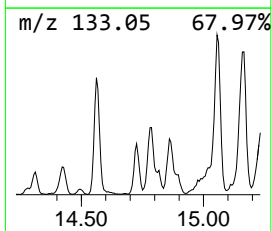
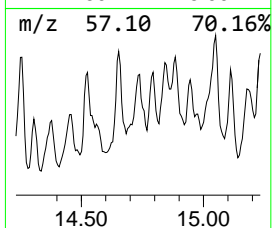
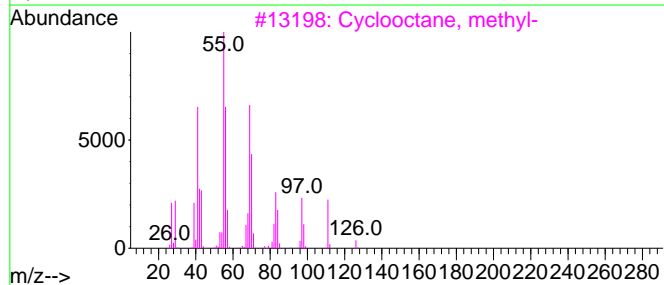
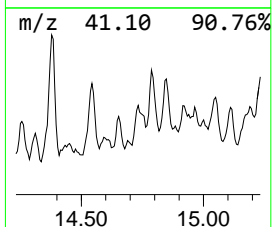
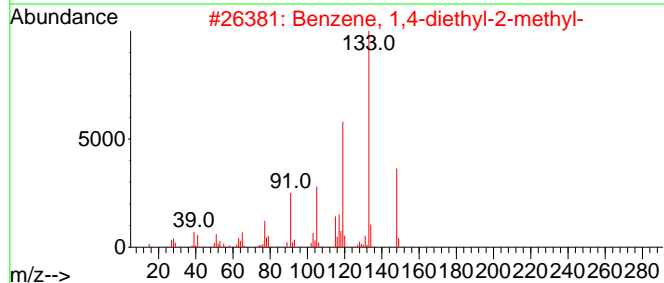
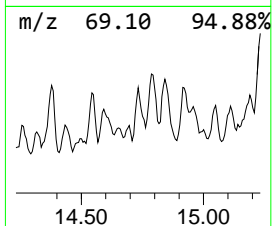
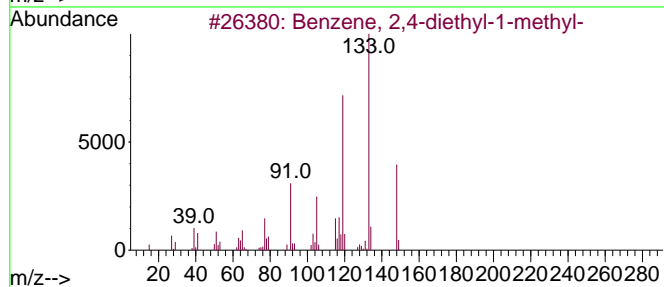
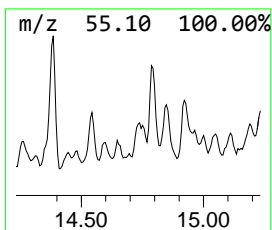
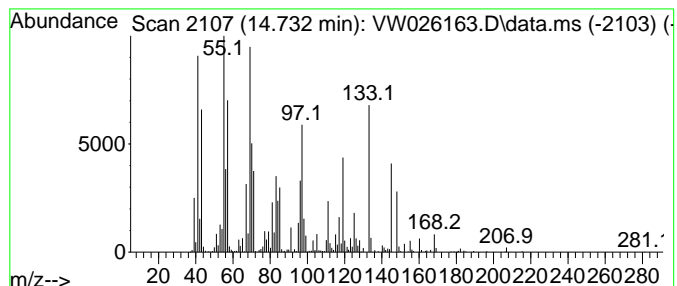
Quant Method : Z:\voasrv\HPCHEM1\MSVOA_W\Method\SFAMWLM053023SMA.M
 Quant Title : SFAM01.0

TIC Library : C:\Database\NIST20.L
 TIC Integration Parameters: LSCINT.P

 Peak Number 25 unknown-03 Concentration Rank 13

R.T.	EstConc	Area	Relative to ISTD	R.T.
14.732	11.72 ug/L	545053	1,4-Dichlorobenzene-d4	13.556

Hit#	of	5	Tentative ID	MW	MolForm	CAS#	Qual
1			Benzene, 2,4-diethyl-1-methyl-	148	C11H16	001758-85-6	48
2			Benzene, 1,4-diethyl-2-methyl-	148	C11H16	013632-94-5	48
3			Cyclooctane, methyl-	126	C9H18	001502-38-1	38
4			Cyclopropane, 1-ethyl-1-methyl-	84	C6H12	053778-43-1	35
5			2-(1,5-Dimethyl-hexyl)-cyclobuta...	182	C12H22O	1000187-17-7	25



Data Path : Z:\voasrv\HPCHEM1\MSVOA_W\Data\VW060923\
 Data File : VW026163.D
 Acq On : 09 Jun 2023 12:13
 Operator : SY/MD
 Sample : 03101-10RE
 Misc : 5.65g/10mL/MSVOA_W/SOIL
 ALS Vial : 1 Sample Multiplier: 1

Instrument :
 MSVOA_W
 ClientSampleId :
 EZEM6RE

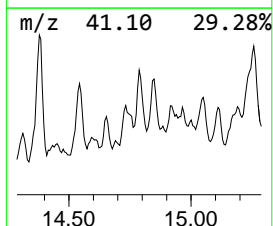
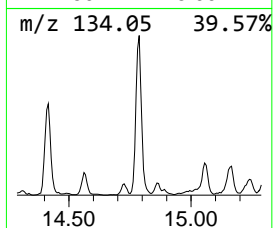
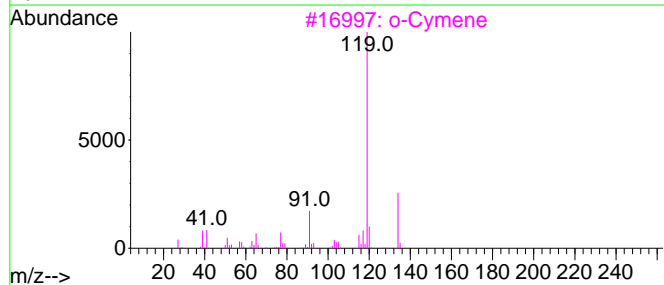
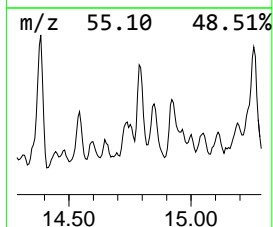
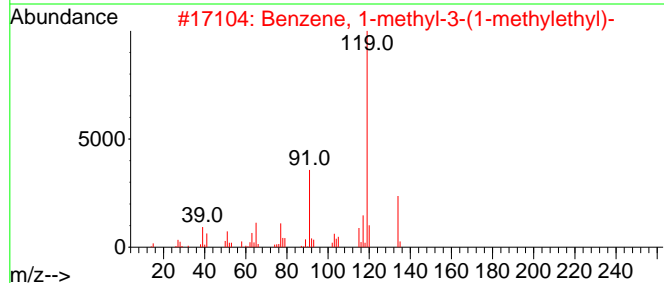
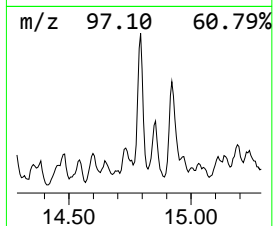
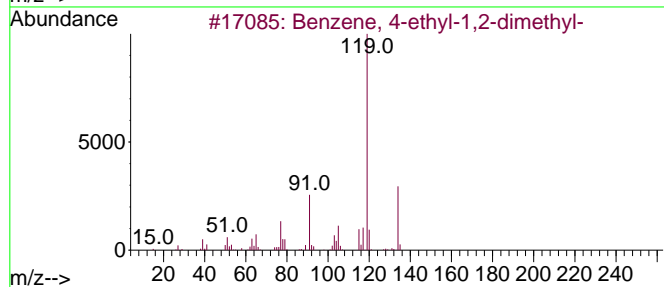
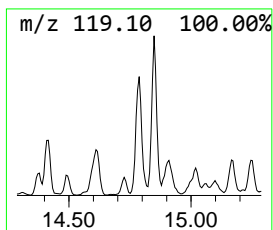
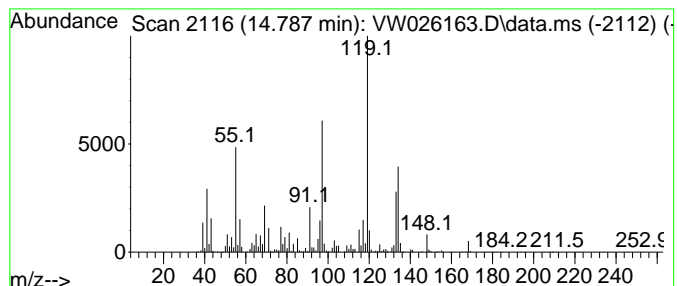
Quant Method : Z:\voasrv\HPCHEM1\MSVOA_W\Method\SFAMWLM053023SMA.M
 Quant Title : SFAM01.0

TIC Library : C:\Database\NIST20.L
 TIC Integration Parameters: LSCINT.P

 Peak Number 26 Benzene, 4-ethyl-1,2-dimethyl- Concentration Rank 4

R.T.	EstConc	Area	Relative to ISTD	R.T.
14.787	24.22 ug/L	1126400	1,4-Dichlorobenzene-d4	13.556

Hit#	of 5	Tentative ID	MW	MolForm	CAS#	Qual
1		Benzene, 4-ethyl-1,2-dimethyl-	134	C10H14	000934-80-5	91
2		Benzene, 1-methyl-3-(1-methyleth...	134	C10H14	000535-77-3	91
3		o-Cymene	134	C10H14	000527-84-4	91
4		p-Cymene	134	C10H14	000099-87-6	83
5		o-Cymene	134	C10H14	000527-84-4	83



Data Path : Z:\voasrv\HPCHEM1\MSVOA_W\Data\VW060923\
 Data File : VW026163.D
 Acq On : 09 Jun 2023 12:13
 Operator : SY/MD
 Sample : 03101-10RE
 Misc : 5.65g/10mL/MSVOA_W/SOIL
 ALS Vial : 1 Sample Multiplier: 1

Instrument :
 MSVOA_W
 ClientSampleId :
 EZEM6RE

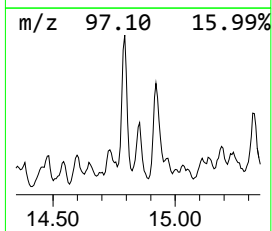
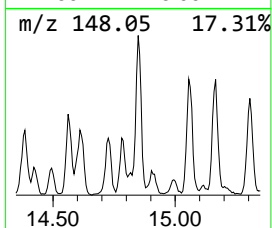
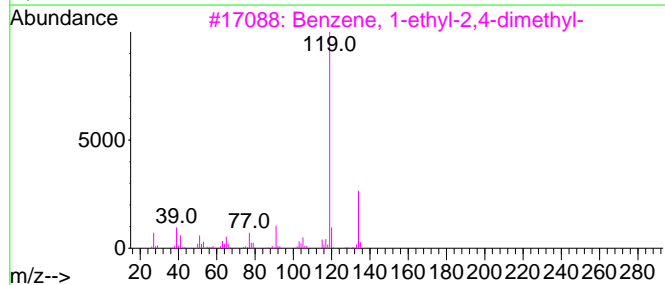
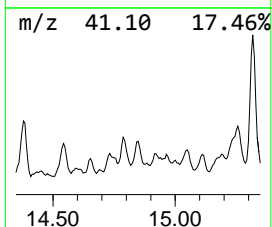
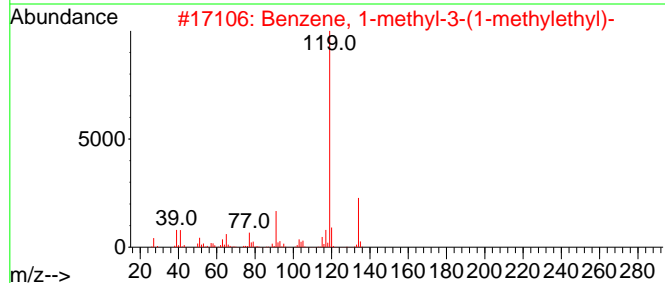
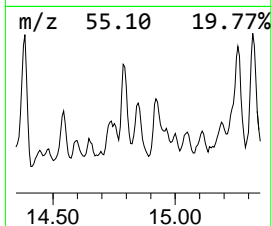
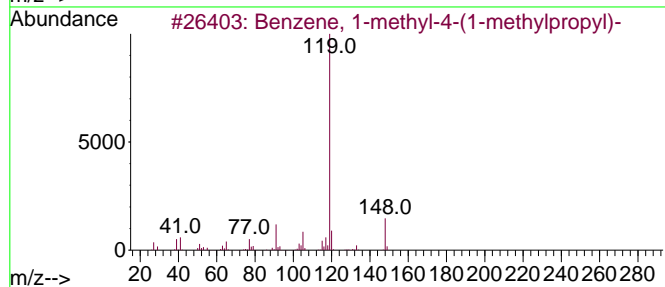
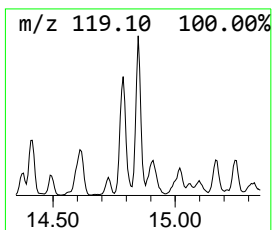
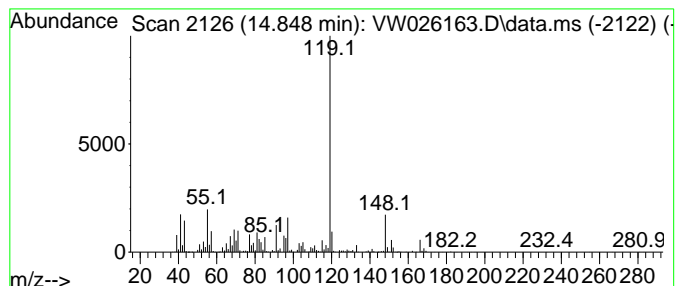
Quant Method : Z:\voasrv\HPCHEM1\MSVOA_W\Method\SFAMWLM053023SMA.M
 Quant Title : SFAM01.0

TIC Library : C:\Database\NIST20.L
 TIC Integration Parameters: LSCINT.P

 Peak Number 27 Benzene, 1-methyl-3-(1-meth... Concentration Rank 7

R.T.	EstConc	Area	Relative to ISTD	R.T.
14.848	19.07 ug/L	886676	1,4-Dichlorobenzene-d4	13.556

Hit#	of	5	Tentative ID	MW	MolForm	CAS#	Qual
1			Benzene, 1-methyl-4-(1-methylpro...	148	C11H16	001595-16-0	72
2			Benzene, 1-methyl-3-(1-methyleth...	134	C10H14	000535-77-3	59
3			Benzene, 1-ethyl-2,4-dimethyl-	134	C10H14	000874-41-9	58
4			Benzene, 1,1'-(1,1,2,2-tetrameth...	238	C18H22	001889-67-4	53
5			1-Chloro-2-methyl-2-phenylpropane	168	C10H13Cl	000515-40-2	53



Data Path : Z:\voasrv\HPCHEM1\MSVOA_W\Data\VW060923\
 Data File : VW026163.D
 Acq On : 09 Jun 2023 12:13
 Operator : SY/MD
 Sample : 03101-10RE
 Misc : 5.65g/10mL/MSVOA_W/SOIL
 ALS Vial : 1 Sample Multiplier: 1

Instrument :
 MSVOA_W
 ClientSampleId :
 EZEM6RE

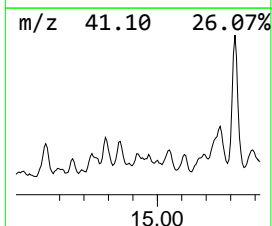
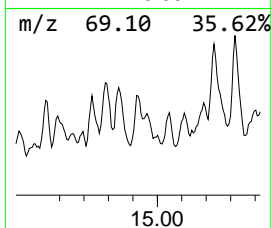
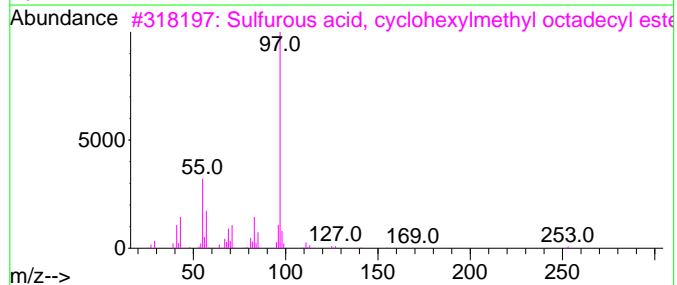
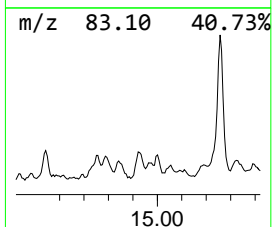
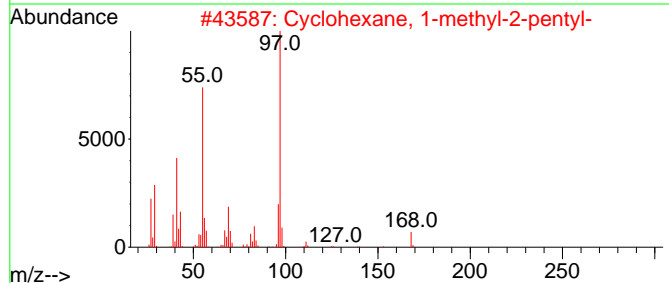
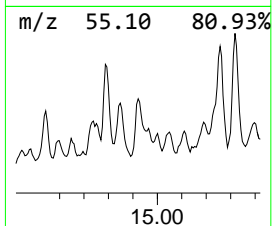
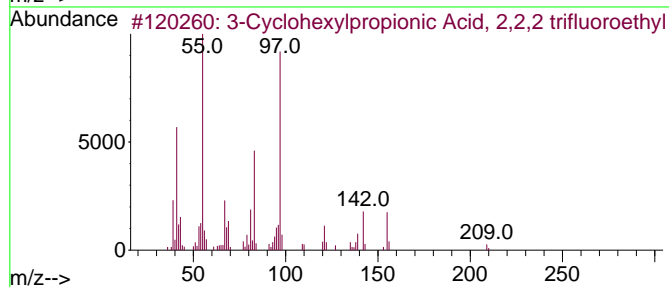
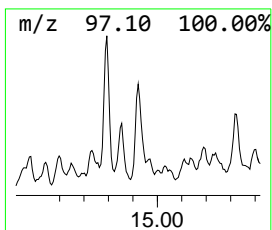
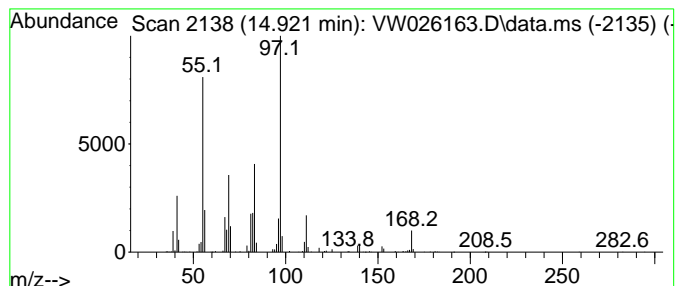
Quant Method : Z:\voasrv\HPCHEM1\MSVOA_W\Method\SFAMWLM053023SMA.M
 Quant Title : SFAM01.0

TIC Library : C:\Database\NIST20.L
 TIC Integration Parameters: LSCINT.P

 Peak Number 28 3-Cyclohexylpropionic Acid,... Concentration Rank 31

R.T.	EstConc	Area	Relative to ISTD	R.T.
14.921	3.18 ug/L	147964	1,4-Dichlorobenzene-d4	13.556

Hit#	of	5	Tentative ID	MW	MolForm	CAS#	Qual
1			3-Cyclohexylpropionic Acid, 2,2,...	238	C11H17F3O2	1000376-54-1	59
2			Cyclohexane, 1-methyl-2-pentyl-	168	C12H24	054411-01-7	58
3			Sulfurous acid, cyclohexylmethyl...	430	C25H50O3S	1000309-22-6	53
4			Cyclohexane, 1-ethyl-2-methyl-, ...	126	C9H18	004923-77-7	52
5			Cyclohexane, 1-methyl-3-pentyl-	168	C12H24	054411-02-8	50



Data Path : Z:\voasrv\HPCHEM1\MSVOA_W\Data\VW060923\
 Data File : VW026163.D
 Acq On : 09 Jun 2023 12:13
 Operator : SY/MD
 Sample : 03101-10RE
 Misc : 5.65g/10mL/MSVOA_W/SOIL
 ALS Vial : 1 Sample Multiplier: 1

Instrument :
 MSVOA_W
 ClientSampleId :
 EZEM6RE

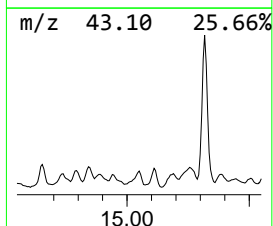
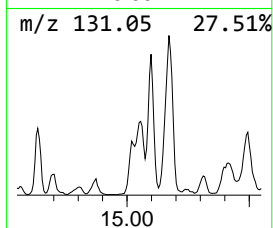
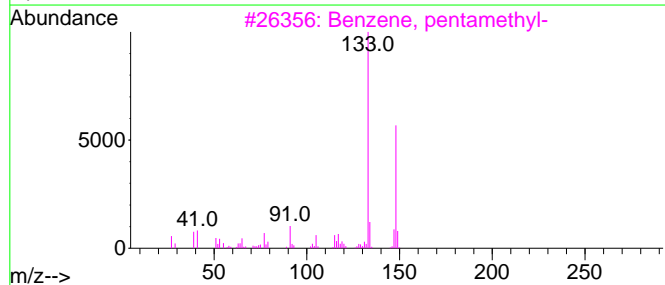
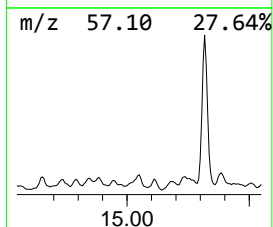
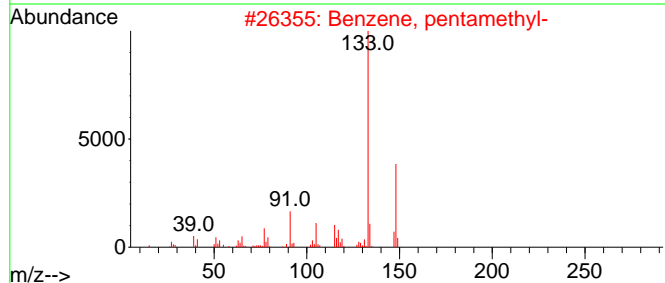
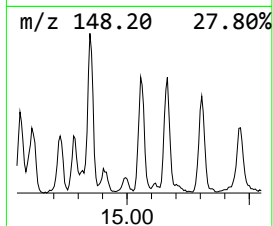
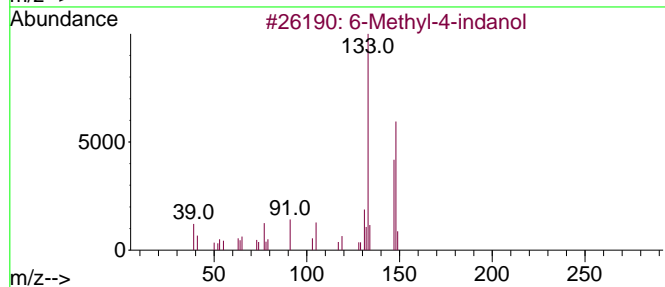
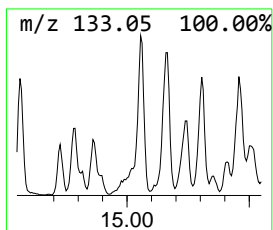
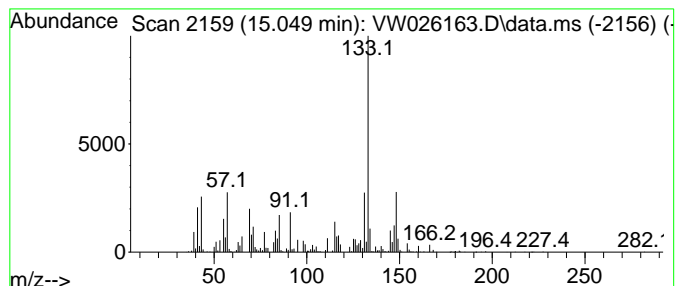
Quant Method : Z:\voasrv\HPCHEM1\MSVOA_W\Method\SFAMWLM053023SMA.M
 Quant Title : SFAM01.0

TIC Library : C:\Database\NIST20.L
 TIC Integration Parameters: LSCINT.P

 Peak Number 29 6-Methyl-4-indanol Concentration Rank 10

R.T.	EstConc	Area	Relative to ISTD	R.T.
15.049	13.24 ug/L	615552	1,4-Dichlorobenzene-d4	13.556

Hit#	of	5	Tentative ID	MW	MolForm	CAS#	Qual
1			6-Methyl-4-indanol	148	C10H12O	020294-32-0	68
2			Benzene, pentamethyl-	148	C11H16	000700-12-9	58
3			Benzene, pentamethyl-	148	C11H16	000700-12-9	58
4			Benzene, pentamethyl-	148	C11H16	000700-12-9	53
5			5H-Cyclopentapyrazine, 6,7-dihyd...	148	C9H12N2	038917-61-2	53



Data Path : Z:\voasrv\HPCHEM1\MSVOA_W\Data\VW060923\
 Data File : VW026163.D
 Acq On : 09 Jun 2023 12:13
 Operator : SY/MD
 Sample : 03101-10RE
 Misc : 5.65g/10mL/MSVOA_W/SOIL
 ALS Vial : 1 Sample Multiplier: 1

Instrument :
 MSVOA_W
 ClientSampleId :
 EZEM6RE

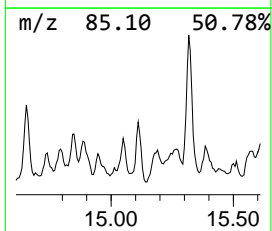
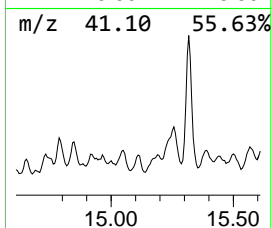
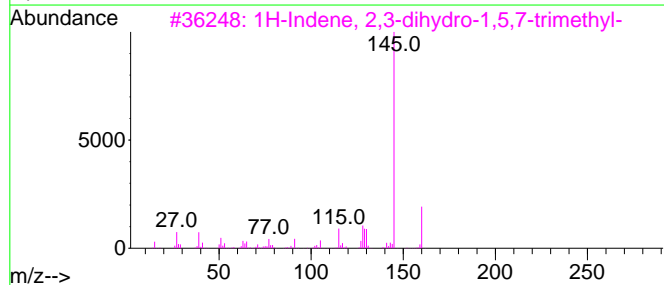
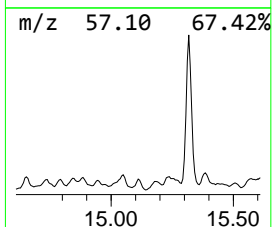
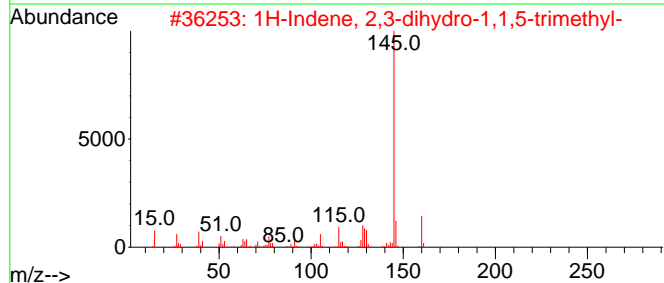
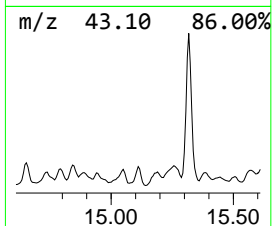
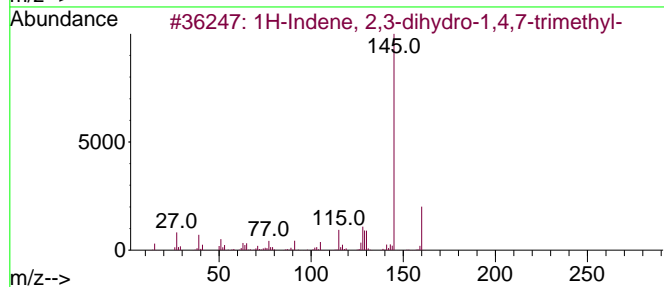
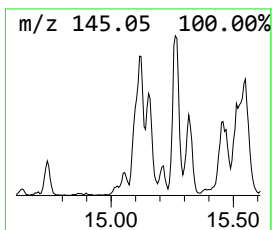
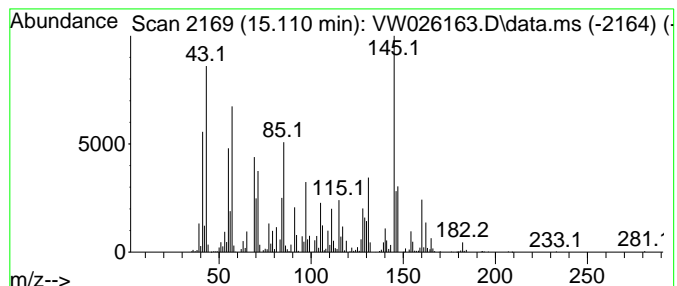
Quant Method : Z:\voasrv\HPCHEM1\MSVOA_W\Method\SFAMWLM053023SMA.M
 Quant Title : SFAM01.0

TIC Library : C:\Database\NIST20.L
 TIC Integration Parameters: LSCINT.P

 Peak Number 30 1H-Indene, 2,3-dihydro-1,4,... Concentration Rank 9

R.T.	EstConc	Area	Relative to ISTD	R.T.
15.110	13.45 ug/L	625393	1,4-Dichlorobenzene-d4	13.556

Hit#	of 5	Tentative ID	MW	MolForm	CAS#	Qual
1		1H-Indene, 2,3-dihydro-1,4,7-tri...	160	C12H16	054340-87-3	81
2		1H-Indene, 2,3-dihydro-1,1,5-tri...	160	C12H16	040650-41-7	46
3		1H-Indene, 2,3-dihydro-1,5,7-tri...	160	C12H16	054340-88-4	42
4		Benzene, 1,3,5-trimethyl-2-(1-me...	160	C12H16	014679-13-1	41
5		Benzene, 1-(2-butenyl)-2,3-dimet...	160	C12H16	054340-85-1	38



Data Path : Z:\voasrv\HPCHEM1\MSVOA_W\Data\VW060923\
 Data File : VW026163.D
 Acq On : 09 Jun 2023 12:13
 Operator : SY/MD
 Sample : 03101-10RE
 Misc : 5.65g/10mL/MSVOA_W/SOIL
 ALS Vial : 1 Sample Multiplier: 1

Instrument :
 MSVOA_W
 ClientSampleId :
 EZEM6RE

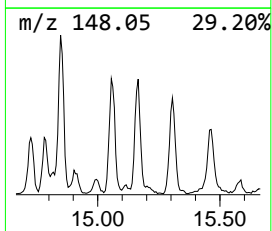
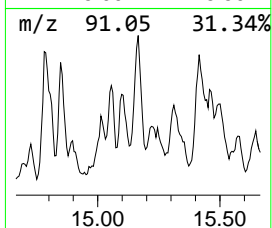
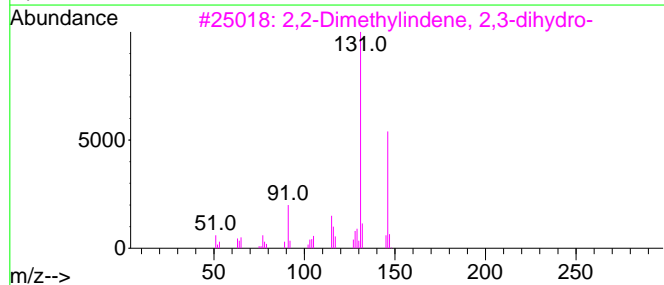
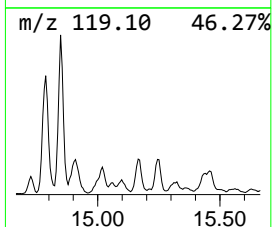
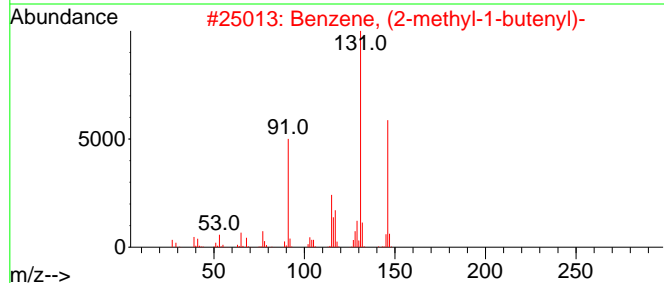
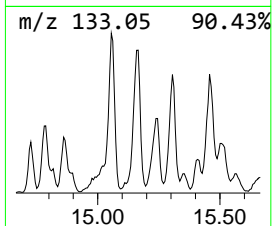
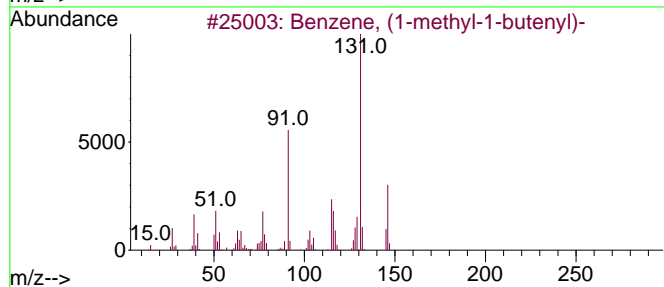
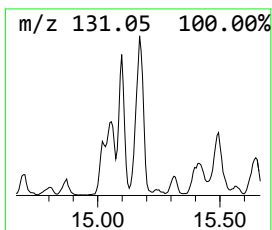
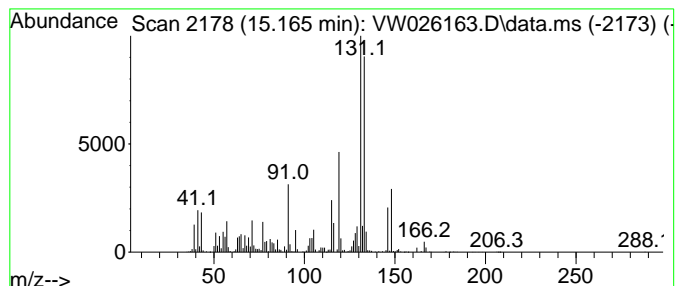
Quant Method : Z:\voasrv\HPCHEM1\MSVOA_W\Method\SFAMWLM053023SMA.M
 Quant Title : SFAM01.0

TIC Library : C:\Database\NIST20.L
 TIC Integration Parameters: LSCINT.P

 Peak Number 31 Benzene, (1-methyl-1-butenyl)- Concentration Rank 6

R.T.	EstConc	Area	Relative to ISTD	R.T.
15.165	21.36 ug/L	993182	1,4-Dichlorobenzene-d4	13.556

Hit#	of	5	Tentative ID	MW	MolForm	CAS#	Qual
1			Benzene, (1-methyl-1-butenyl)-	146	C11H14	053172-84-2	64
2			Benzene, (2-methyl-1-butenyl)-	146	C11H14	056253-64-6	64
3			2,2-Dimethylindene, 2,3-dihydro-	146	C11H14	020836-11-7	50
4			1H-Indene, 2,3-dihydro-1,3-dimet...	146	C11H14	004175-53-5	46
5			Benzene, 1-methyl-2-(1-methyl-2-...	146	C11H14	097664-19-2	46



Data Path : Z:\voasrv\HPCHEM1\MSVOA_W\Data\VW060923\
 Data File : VW026163.D
 Acq On : 09 Jun 2023 12:13
 Operator : SY/MD
 Sample : 03101-10RE
 Misc : 5.65g/10mL/MSVOA_W/SOIL
 ALS Vial : 1 Sample Multiplier: 1

Instrument :
 MSVOA_W
 ClientSampleId :
 EZEM6RE

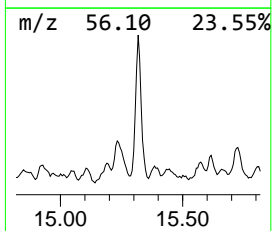
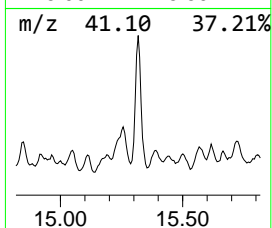
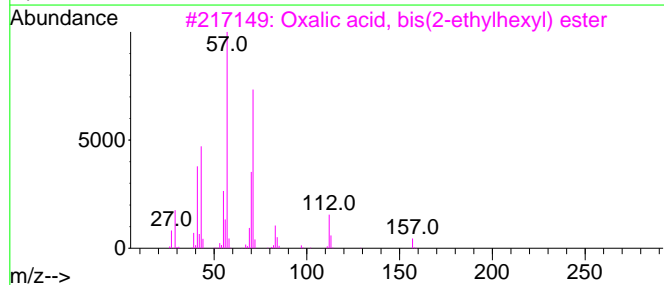
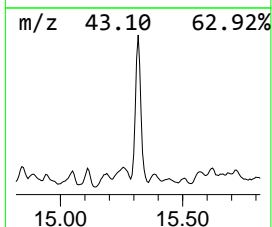
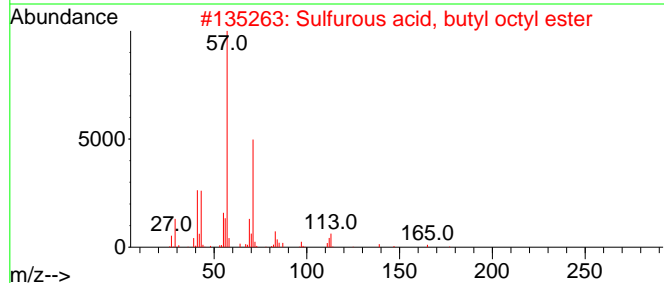
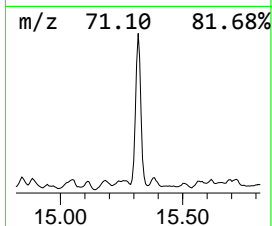
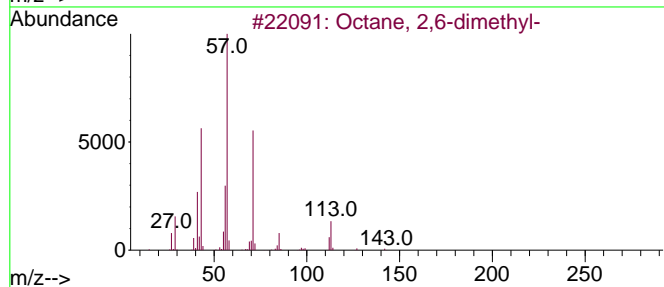
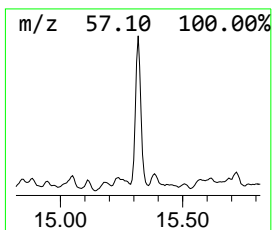
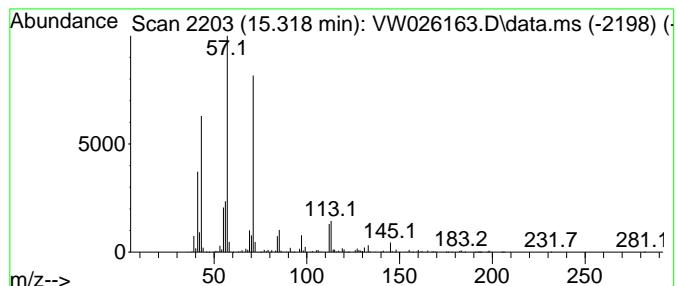
Quant Method : Z:\voasrv\HPCHEM1\MSVOA_W\Method\SFAMWLM053023SMA.M
 Quant Title : SFAM01.0

TIC Library : C:\Database\NIST20.L
 TIC Integration Parameters: LSCINT.P

 Peak Number 32 (DEL) Alkane: Straight-Chai... Concentration Rank 1

R.T.	EstConc	Area	Relative to ISTD	R.T.
15.318	59.04 ug/L	2745280	1,4-Dichlorobenzene-d4	13.556

Hit#	of 5	Tentative ID	MW	MolForm	CAS#	Qual
1		Octane, 2,6-dimethyl-	142	C10H22	002051-30-1	83
2		Sulfurous acid, butyl octyl ester	250	C12H26O3S	1000309-17-5	72
3		Oxalic acid, bis(2-ethylhexyl) e...	314	C18H34O4	1000309-39-0	64
4		Nonane, 3-methyl-	142	C10H22	005911-04-6	64
5		Nonane, 4-methyl-5-propyl-	184	C13H28	062185-55-1	64



Data Path : Z:\voasrv\HPCHEM1\MSVOA_W\Data\VW060923\
 Data File : VW026163.D
 Acq On : 09 Jun 2023 12:13
 Operator : SY/MD
 Sample : 03101-10RE
 Misc : 5.65g/10mL/MSVOA_W/SOIL
 ALS Vial : 1 Sample Multiplier: 1

Instrument :
 MSVOA_W
 ClientSampleId :
 EZEM6RE

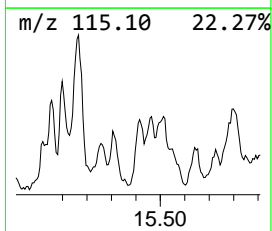
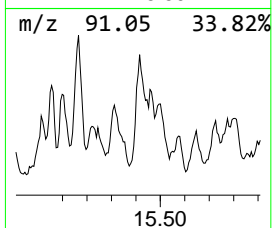
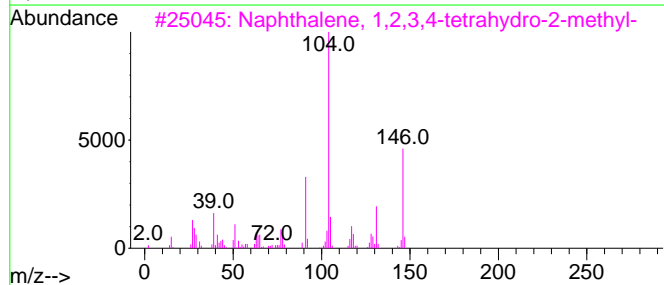
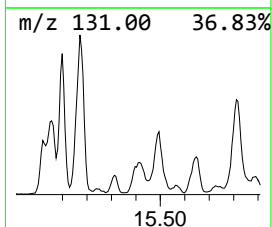
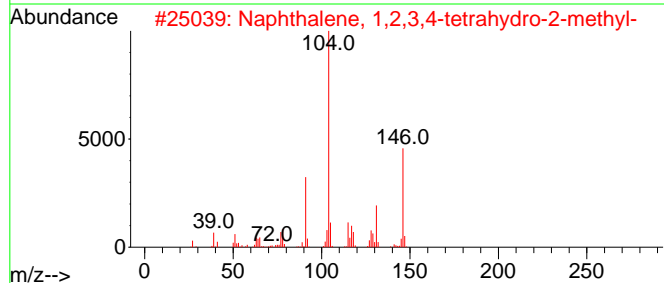
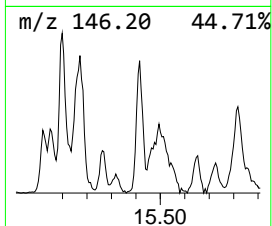
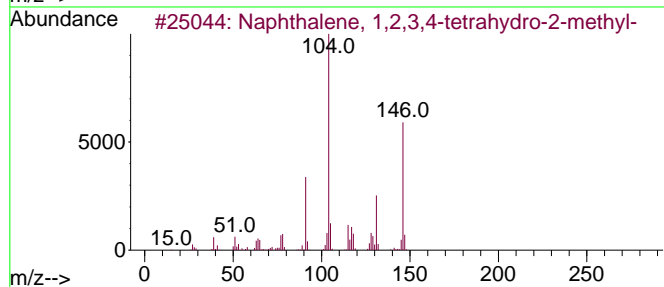
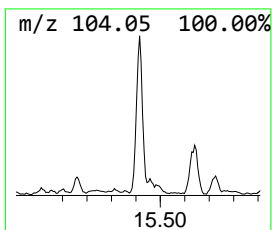
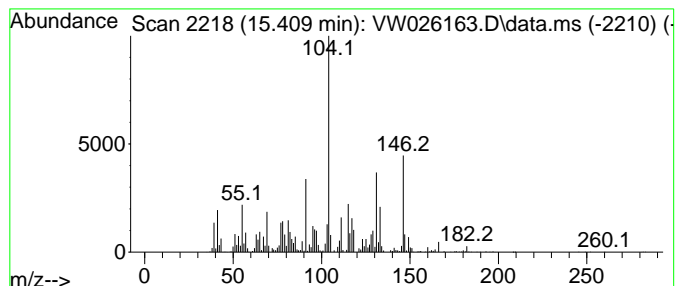
Quant Method : Z:\voasrv\HPCHEM1\MSVOA_W\Method\SFAMWLM053023SMA.M
 Quant Title : SFAM01.0

TIC Library : C:\Database\NIST20.L
 TIC Integration Parameters: LSCINT.P

 Peak Number 33 Naphthalene, 1,2,3,4-tetra... Concentration Rank 8

R.T.	EstConc	Area	Relative to ISTD	R.T.
15.409	18.27 ug/L	849741	1,4-Dichlorobenzene-d4	13.556

Hit#	of	5	Tentative ID	MW	MolForm	CAS#	Qual
1			Naphthalene, 1,2,3,4-tetrahydro-...	146	C11H14	003877-19-8	74
2			Naphthalene, 1,2,3,4-tetrahydro-...	146	C11H14	003877-19-8	68
3			Naphthalene, 1,2,3,4-tetrahydro-...	146	C11H14	003877-19-8	53
4			Naphth[1,2-b]oxirene, 1a,2,3,7b-...	146	C10H10O	002461-34-9	52
5			2(1H)-Naphthalenone, 3,4-dihydro-	146	C10H10O	000530-93-8	52



Data Path : Z:\voasrv\HPCHEM1\MSVOA_W\Data\VW060923\
 Data File : VW026163.D
 Acq On : 09 Jun 2023 12:13
 Operator : SY/MD
 Sample : 03101-10RE
 Misc : 5.65g/10mL/MSVOA_W/SOIL
 ALS Vial : 1 Sample Multiplier: 1

Instrument :
 MSVOA_W
 ClientSampleId :
 EZEM6RE

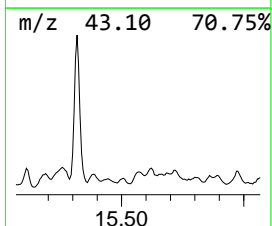
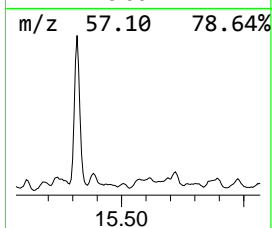
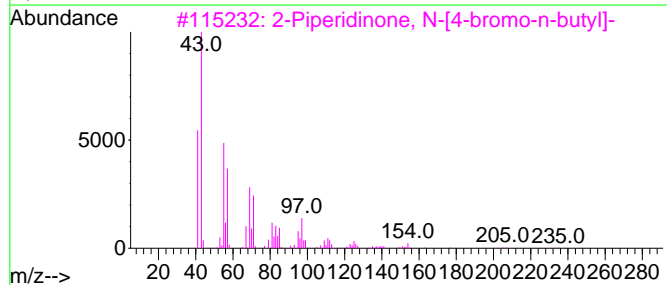
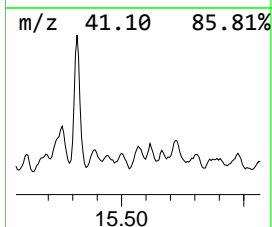
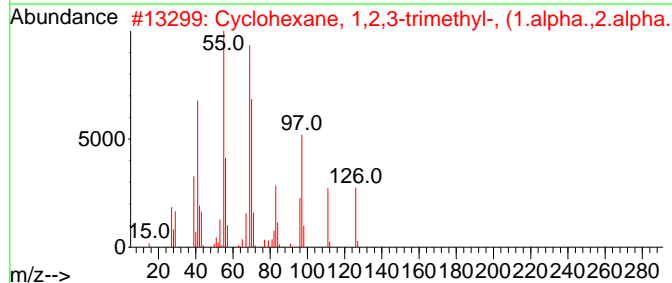
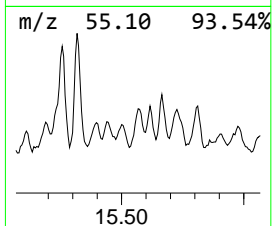
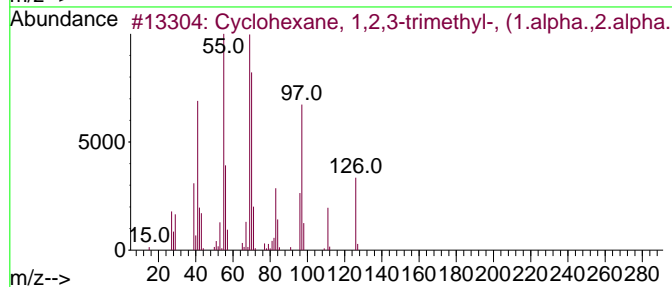
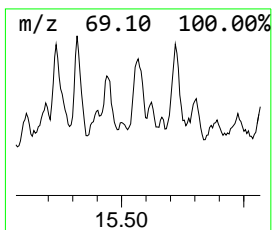
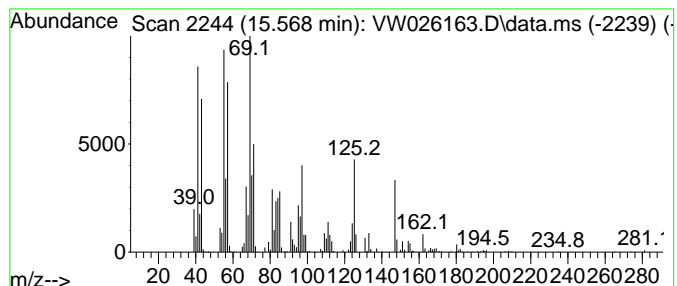
Quant Method : Z:\voasrv\HPCHEM1\MSVOA_W\Method\SFAMWLM053023SMA.M
 Quant Title : SFAM01.0

TIC Library : C:\Database\NIST20.L
 TIC Integration Parameters: LSCINT.P

 Peak Number 34 (DEL) Alkane: Cyclic15.568 Concentration Rank 14

R.T.	EstConc	Area	Relative to ISTD	R.T.
15.568	10.27 ug/L	477479	1,4-Dichlorobenzene-d4	13.556

Hit#	of	5	Tentative ID	MW	MolForm	CAS#	Qual
1			Cyclohexane, 1,2,3-trimethyl-, (...	126	C9H18	001839-88-9	46
2			Cyclohexane, 1,2,3-trimethyl-, (...	126	C9H18	007667-55-2	46
3			2-Piperidinone, N-[4-bromo-n-but...	233	C9H16BrNO	195194-80-0	38
4			1-Hexacosanol	382	C26H54O	000506-52-5	38
5			2-Pentene, 3-methyl-, (Z)-	84	C6H12	000922-62-3	30



Data Path : Z:\voasrv\HPCHEM1\MSVOA_W\Data\VW060923\
 Data File : VW026163.D
 Acq On : 09 Jun 2023 12:13
 Operator : SY/MD
 Sample : 03101-10RE
 Misc : 5.65g/10mL/MSVOA_W/SOIL
 ALS Vial : 1 Sample Multiplier: 1

Instrument :
 MSVOA_W
 ClientSampleId :
 EZEM6RE

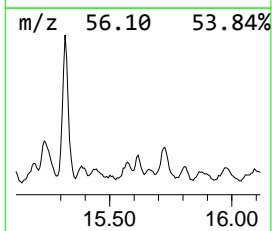
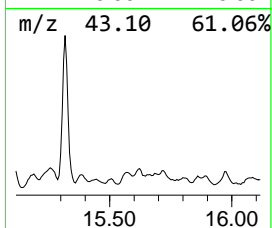
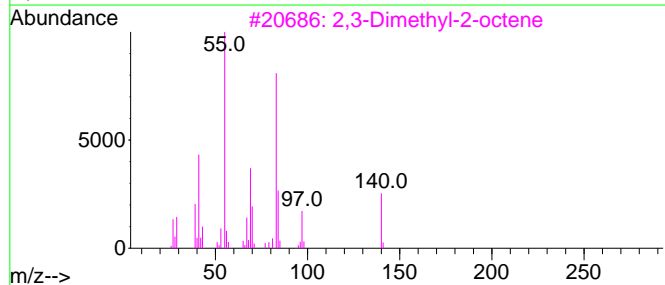
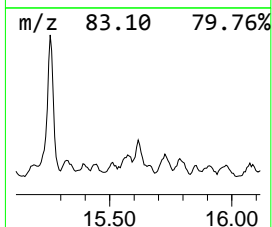
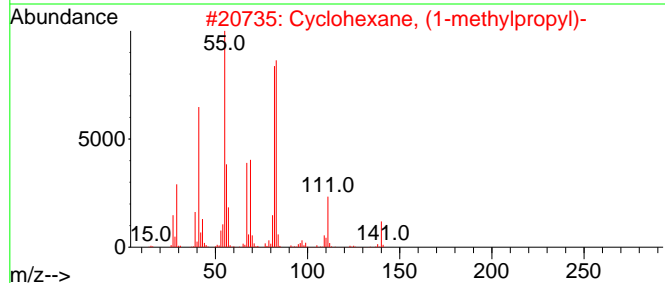
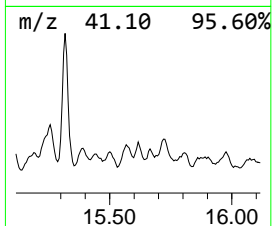
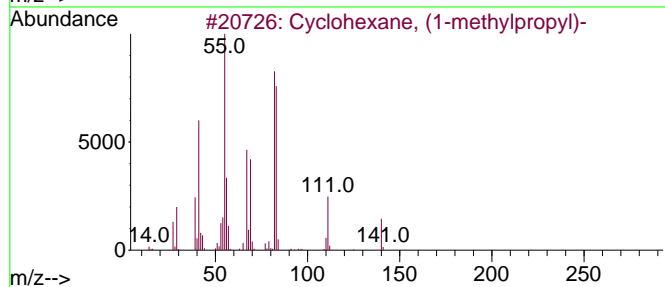
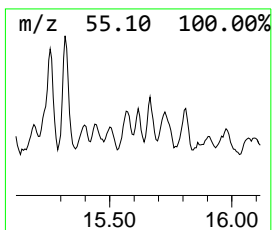
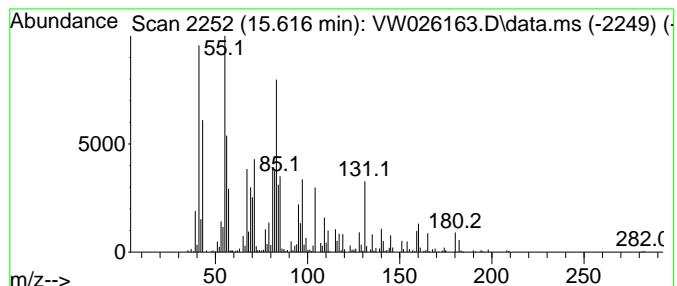
Quant Method : Z:\voasrv\HPCHEM1\MSVOA_W\Method\SFAMWLM053023SMA.M
 Quant Title : SFAM01.0

TIC Library : C:\Database\NIST20.L
 TIC Integration Parameters: LSCINT.P

 Peak Number 35 (DEL) Alkane: Cyclic15.616 Concentration Rank 21

R.T.	EstConc	Area	Relative to ISTD	R.T.
15.616	6.17 ug/L	286885	1,4-Dichlorobenzene-d4	13.556

Hit#	of	5	Tentative ID	MW	MolForm	CAS#	Qual
1			Cyclohexane, (1-methylpropyl)-	140	C10H20	007058-01-7	38
2			Cyclohexane, (1-methylpropyl)-	140	C10H20	007058-01-7	35
3			2,3-Dimethyl-2-octene	140	C10H20	019781-18-1	27
4			1,6-Dibromo-2-cyclohexylpentane	310	C11H20Br2	061639-12-1	27
5			Cyclohexane, (2-methylpropyl)-	140	C10H20	001678-98-4	27



Data Path : Z:\voasrv\HPCHEM1\MSVOA_W\Data\VW060923\
 Data File : VW026163.D
 Acq On : 09 Jun 2023 12:13
 Operator : SY/MD
 Sample : 03101-10RE
 Misc : 5.65g/10mL/MSVOA_W/SOIL
 ALS Vial : 1 Sample Multiplier: 1

Instrument :
 MSVOA_W
 ClientSampleId :
 EZEM6RE

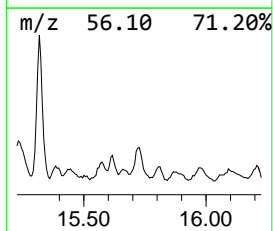
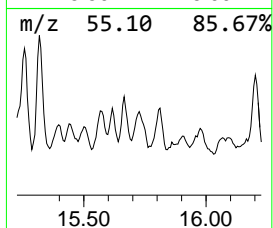
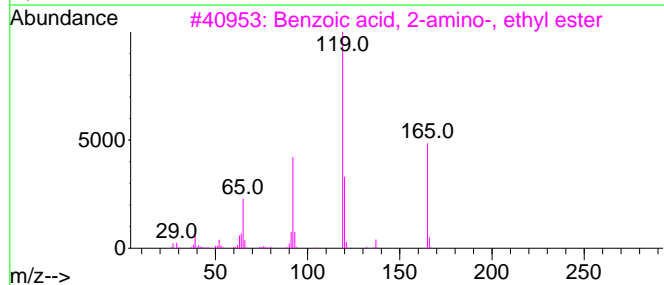
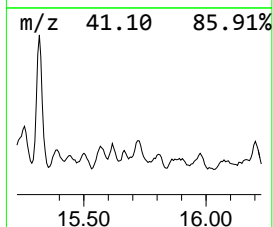
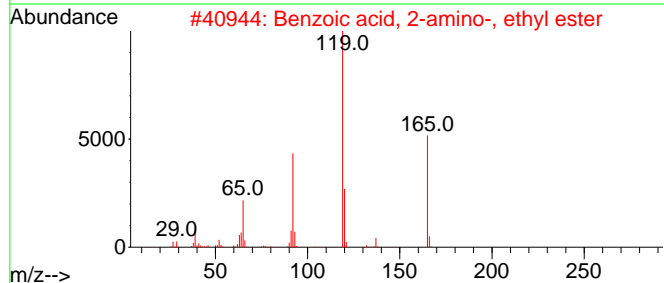
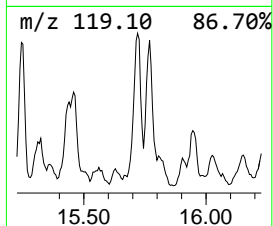
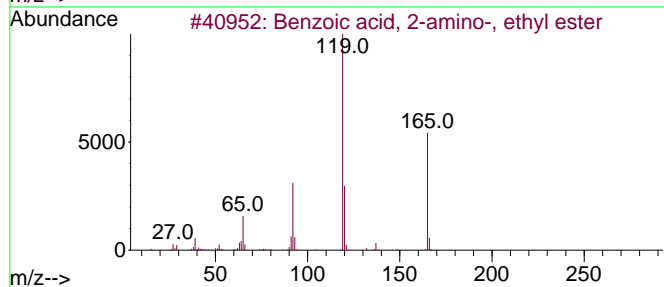
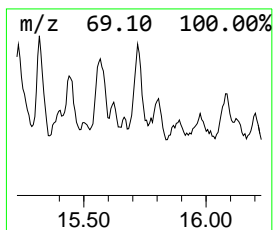
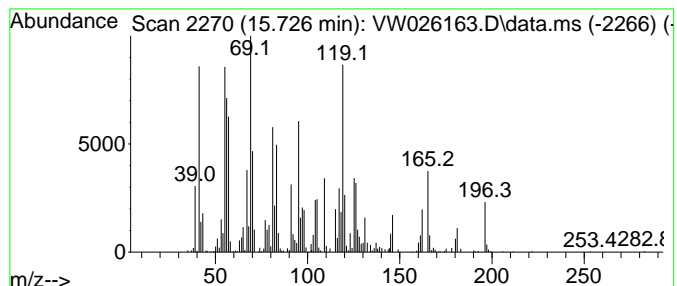
Quant Method : Z:\voasrv\HPCHEM1\MSVOA_W\Method\SFAMWLM053023SMA.M
 Quant Title : SFAM01.0

TIC Library : C:\Database\NIST20.L
 TIC Integration Parameters: LSCINT.P

 Peak Number 36 unknown-04 Concentration Rank 15

R.T.	EstConc	Area	Relative to ISTD	R.T.
15.726	9.46 ug/L	440063	1,4-Dichlorobenzene-d4	13.556

Hit#	of	5	Tentative ID	MW	MolForm	CAS#	Qual
1			Benzoic acid, 2-amino-, ethyl ester	165	C9H11NO2	000087-25-2	30
2			Benzoic acid, 2-amino-, ethyl ester	165	C9H11NO2	000087-25-2	30
3			Benzoic acid, 2-amino-, ethyl ester	165	C9H11NO2	000087-25-2	30
4			1,6-Heptadiene, 2,5,5-trimethyl-	138	C10H18	062238-28-2	25
5			Benzene, 1-ethyl-4-(2-methylprop...	162	C12H18	100319-40-2	22



Data Path : Z:\voasrv\HPCHEM1\MSVOA_W\Data\VW060923\
 Data File : VW026163.D
 Acq On : 09 Jun 2023 12:13
 Operator : SY/MD
 Sample : 03101-10RE
 Misc : 5.65g/10mL/MSVOA_W/SOIL
 ALS Vial : 1 Sample Multiplier: 1

Instrument :
 MSVOA_W
 ClientSampleId :
 EZEM6RE

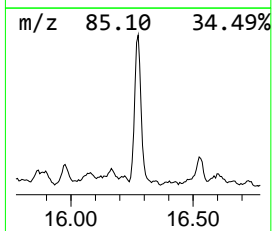
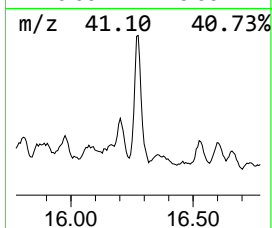
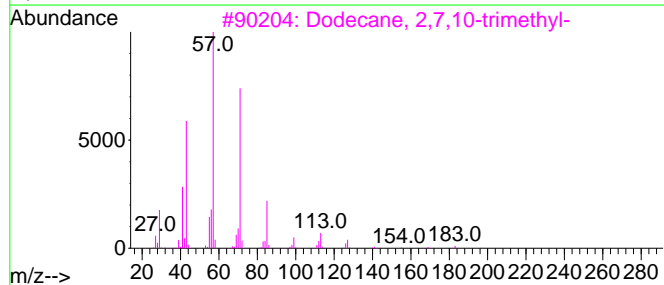
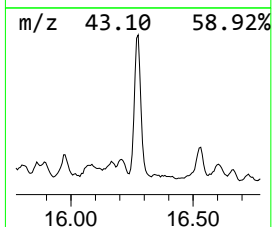
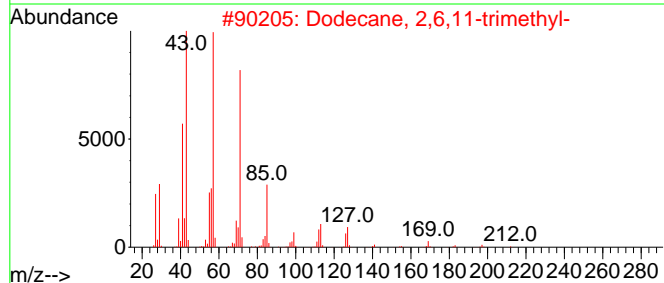
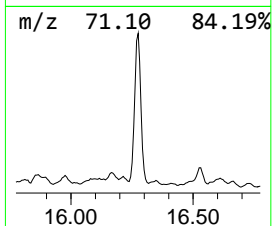
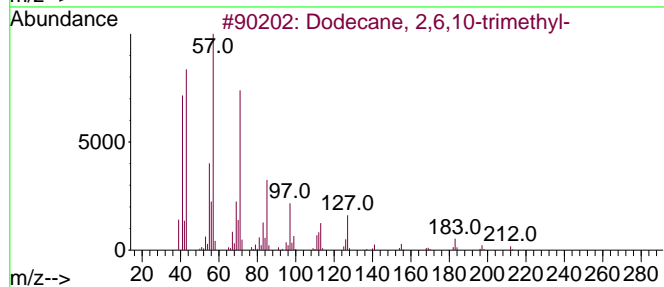
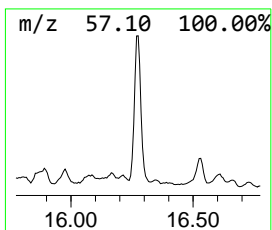
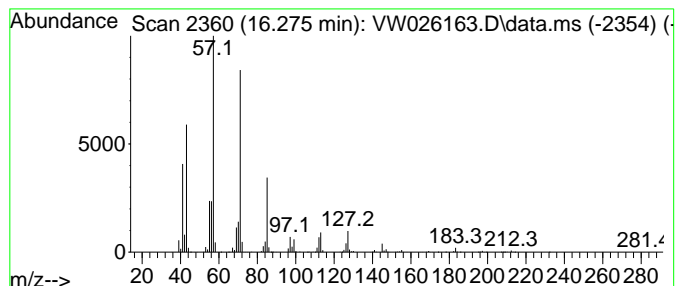
Quant Method : Z:\voasrv\HPCHEM1\MSVOA_W\Method\SFAMWLM053023SMA.M
 Quant Title : SFAM01.0

TIC Library : C:\Database\NIST20.L
 TIC Integration Parameters: LSCINT.P

 Peak Number 37 (DEL) Alkane: Straight-Chai... Concentration Rank 2

R.T.	EstConc	Area	Relative to ISTD	R.T.
16.275	41.65 ug/L	1937000	1,4-Dichlorobenzene-d4	13.556

Hit#	of 5	Tentative ID	MW	MolForm	CAS#	Qual
1		Dodecane, 2,6,10-trimethyl-	212	C15H32	003891-98-3	91
2		Dodecane, 2,6,11-trimethyl-	212	C15H32	031295-56-4	90
3		Dodecane, 2,7,10-trimethyl-	212	C15H32	074645-98-0	90
4		Nonane, 3,7-dimethyl-	156	C11H24	017302-32-8	87
5		Dodecane, 2,6,10-trimethyl-	212	C15H32	003891-98-3	80



Data Path : Z:\voasrv\HPCHEM1\MSVOA_W\Data\VW060923\
 Data File : VW026163.D
 Acq On : 09 Jun 2023 12:13
 Operator : SY/MD
 Sample : 03101-10RE
 Misc : 5.65g/10mL/MSVOA_W/SOIL
 ALS Vial : 1 Sample Multiplier: 1

Instrument :
 MSVOA_W
 ClientSampleId :
 EZEM6RE

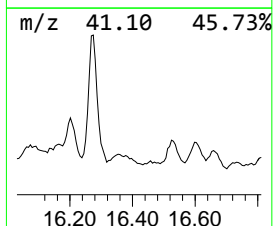
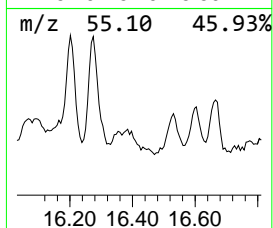
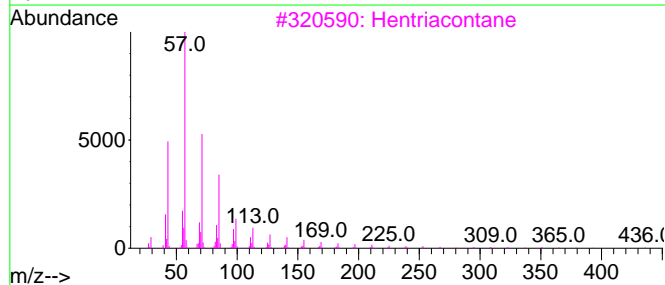
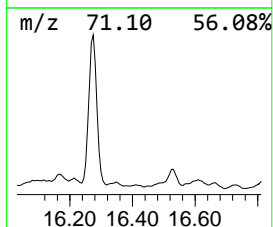
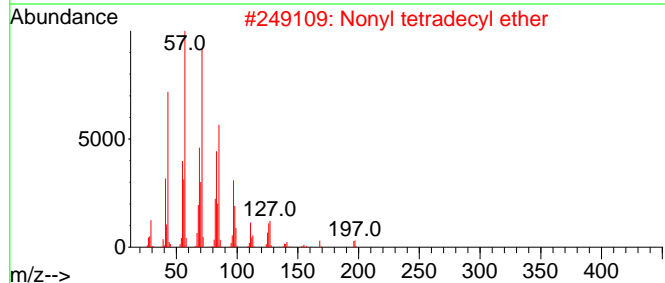
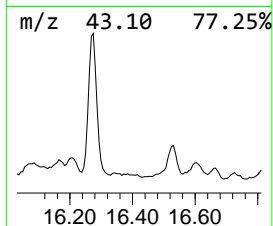
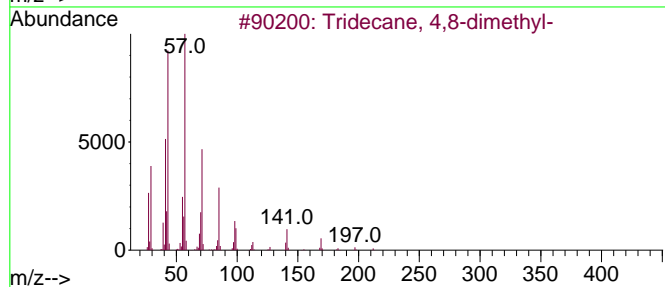
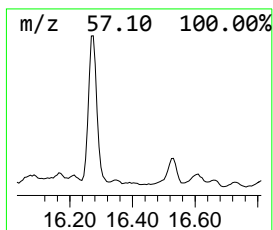
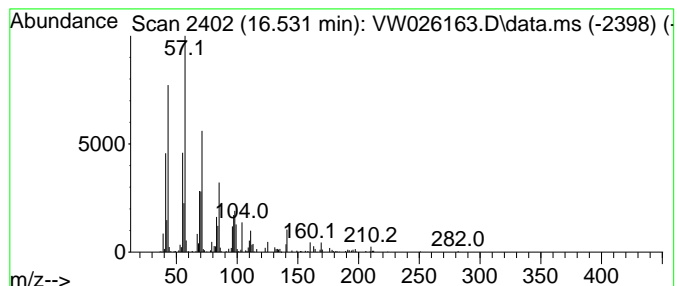
Quant Method : Z:\voasrv\HPCHEM1\MSVOA_W\Method\SFAMWLM053023SMA.M
 Quant Title : SFAM01.0

TIC Library : C:\Database\NIST20.L
 TIC Integration Parameters: LSCINT.P

 Peak Number 38 (DEL) Alkane: Straight-Chai... Concentration Rank 18

R.T.	EstConc	Area	Relative to ISTD	R.T.
16.531	6.97 ug/L	323889	1,4-Dichlorobenzene-d4	13.556

Hit#	of 5	Tentative ID	MW	MolForm	CAS#	Qual
1		Tridecane, 4,8-dimethyl-	212	C15H32	055030-62-1	91
2		Nonyl tetradecyl ether	340	C23H48O	1000406-37-6	53
3		Hentriacontane	437	C31H64	000630-04-6	53
4		Carbonic acid, prop-1-en-2-yl te...	298	C18H34O3	1000382-90-9	52
5		Carbonic acid, undecyl vinyl ester	242	C14H26O3	1000382-54-9	52



Data Path : Z:\voasrv\HPCHEM1\MSVOA_W\Data\VW060923\
 Data File : VW026163.D
 Acq On : 09 Jun 2023 12:13
 Operator : SY/MD
 Sample : 03101-10RE
 Misc : 5.65g/10mL/MSVOA_W/SOIL
 ALS Vial : 1 Sample Multiplier: 1

Instrument :
 MSVOA_W
 ClientSampleId :
 EZEM6RE

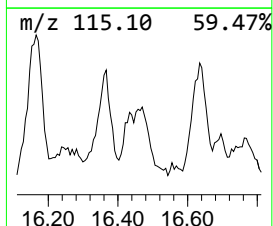
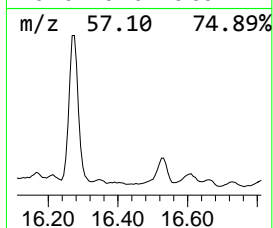
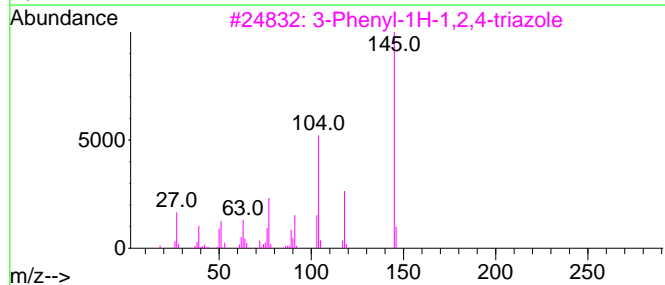
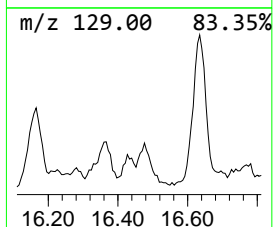
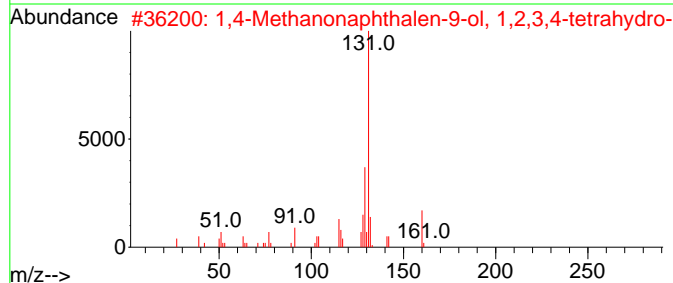
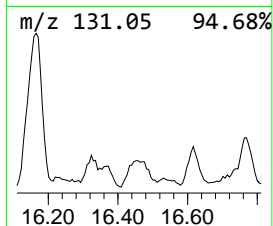
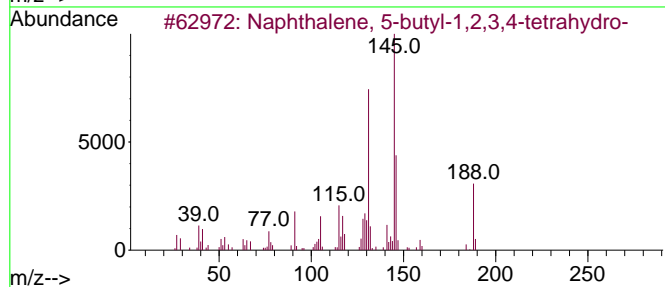
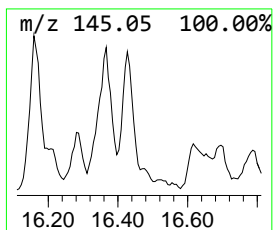
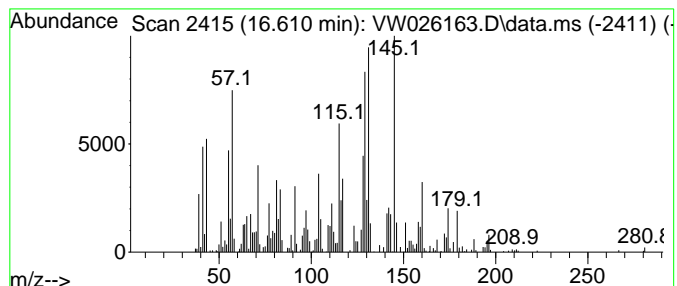
Quant Method : Z:\voasrv\HPCHEM1\MSVOA_W\Method\SFAMWLM053023SMA.M
 Quant Title : SFAM01.0

TIC Library : C:\Database\NIST20.L
 TIC Integration Parameters: LSCINT.P

 Peak Number 39 unknown-05 Concentration Rank 19

R.T.	EstConc	Area	Relative to ISTD	R.T.
16.610	6.54 ug/L	304243	1,4-Dichlorobenzene-d4	13.556

Hit#	of 5	Tentative ID	MW	MolForm	CAS#	Qual
1		Naphthalene, 5-butyl-1,2,3,4-tet...	188	C14H20	066325-42-6	49
2		1,4-Methanonaphthalen-9-ol, 1,2,...	160	C11H12O	055255-94-2	30
3		3-Phenyl-1H-1,2,4-triazole	145	C8H7N3	003357-42-4	25
4		Benzene, (2,2-dimethyl-1-methyle...	160	C12H16	005676-29-9	18
5		Ethanone, 1-(2,3-dihydro-1H-inde...	160	C11H12O	004228-10-8	18



Data Path : Z:\voasrv\HPCHEM1\MSVOA_W\Data\VW060923\
 Data File : VW026163.D
 Acq On : 09 Jun 2023 12:13
 Operator : SY/MD
 Sample : 03101-10RE
 Misc : 5.65g/10mL/MSVOA_W/SOIL
 ALS Vial : 1 Sample Multiplier: 1

Instrument :
 MSVOA_W
 ClientSampleId :
 EZEM6RE

Quant Method : Z:\voasrv\HPCHEM1\MSVOA_W\Method\SFAMWLM053023SMA.M
 Quant Title : SFAM01.0

TIC Library : C:\Database\NIST0.L
 TIC Integration Parameters: LSCINT.P

TIC Top Hit name	RT	EstConc	Units	Response	--Internal Standard--			
					#	RT	Resp	Conc
(DEL) Alkane: C...	12.135	1.3	ug/L	110311	2	11.629	2103470	25.0
(DEL) Alkane: S...	12.361	1.8	ug/L	147943	2	11.629	2103470	25.0
(DEL) Alkane: C...	12.775	4.7	ug/L	219153	3	13.556	1162540	25.0
(DEL) Alkane: C...	12.855	2.5	ug/L	116172	3	13.556	1162540	25.0
Ethanone, 1-(1-...	12.940	8.3	ug/L	388166	3	13.556	1162540	25.0
(DEL) Alkane: S...	12.989	2.7	ug/L	123735	3	13.556	1162540	25.0
(DEL) Alkane: S...	13.074	2.1	ug/L	98862	3	13.556	1162540	25.0
Sulfurous acid,...	13.117	1.4	ug/L	63728	3	13.556	1162540	25.0
1H-Indene, octa...	13.178	2.2	ug/L	102269	3	13.556	1162540	25.0
(DEL) Alkane: S...	13.288	4.8	ug/L	225465	3	13.556	1162540	25.0
(DEL) Alkane: S...	13.336	3.3	ug/L	153088	3	13.556	1162540	25.0
(DEL) Alkane: C...	13.446	12.1	ug/L	563722	3	13.556	1162540	25.0
(DEL) Alkane: C...	13.690	5.6	ug/L	261087	3	13.556	1162540	25.0
Sulfurous acid,...	13.916	5.7	ug/L	266575	3	13.556	1162540	25.0
Disparlure	13.970	6.1	ug/L	285132	3	13.556	1162540	25.0
Sulfurous acid,...	14.056	2.8	ug/L	131678	3	13.556	1162540	25.0
o-Cymene	14.086	12.8	ug/L	593688	3	13.556	1162540	25.0
(DEL) Alkane: S...	14.190	5.1	ug/L	235171	3	13.556	1162540	25.0
unknown-01	14.257	9.0	ug/L	417847	3	13.556	1162540	25.0
unknown-02	14.312	4.0	ug/L	186364	3	13.556	1162540	25.0
Naphthalene, de...	14.379	31.3	ug/L	1454740	3	13.556	1162540	25.0
1-Methyldecahyd...	14.543	21.8	ug/L	1013520	3	13.556	1162540	25.0
Benzene, 1-meth...	14.611	4.5	ug/L	210676	3	13.556	1162540	25.0
unknown-03	14.732	11.7	ug/L	545053	3	13.556	1162540	25.0
Benzene, 4-ethy...	14.787	24.2	ug/L	1126400	3	13.556	1162540	25.0
Benzene, 1-meth...	14.848	19.1	ug/L	886676	3	13.556	1162540	25.0
3-Cyclohexylpro...	14.921	3.2	ug/L	147964	3	13.556	1162540	25.0
6-Methyl-4-indanol	15.049	13.2	ug/L	615552	3	13.556	1162540	25.0
1H-Indene, 2,3-...	15.110	13.4	ug/L	625393	3	13.556	1162540	25.0
Benzene, (1-met...	15.165	21.4	ug/L	993182	3	13.556	1162540	25.0
(DEL) Alkane: S...	15.318	59.0	ug/L	2745280	3	13.556	1162540	25.0
Naphthalene, 1,...	15.409	18.3	ug/L	849741	3	13.556	1162540	25.0
(DEL) Alkane: C...	15.568	10.3	ug/L	477479	3	13.556	1162540	25.0
(DEL) Alkane: C...	15.616	6.2	ug/L	286885	3	13.556	1162540	25.0
unknown-04	15.726	9.5	ug/L	440063	3	13.556	1162540	25.0
(DEL) Alkane: S...	16.275	41.6	ug/L	1937000	3	13.556	1162540	25.0
(DEL) Alkane: S...	16.531	7.0	ug/L	323889	3	13.556	1162540	25.0
unknown-05	16.610	6.5	ug/L	304243	3	13.556	1162540	25.0