

Data Path : Z:\voasrv\HPCHEM1\MSVOA_W\Data\VW061224\
 Data File : VW029106.D
 Acq On : 12 Jun 2024 14:50
 Operator : SY/MD
 Sample : P2844-08
 Misc : 5.00g/10mL/MSVOA_W/SOIL/B
 ALS Vial : 10 Sample Multiplier: 1

Instrument :
 MSVOA_W
ClientSampleId :
 A4DD5

Quant Time: Jun 13 00:50:28 2024
 Quant Method : Z:\voasrv\HPCHEM1\MSVOA_W\Method\SFAMWLM060324SMA.M
 Quant Title : SFAM01.0
 QLast Update : Thu Jun 13 00:47:39 2024
 Response via : Initial Calibration

Manual Integrations
APPROVED
 Reviewed By :Semsettin Yesilyurt 06/13/2024
 Supervised By :Mahesh Dadoda 06/13/2024

Compound	R.T.	QIon	Response	Conc	Units	Dev(Min)
Internal Standards						
1) 1,4-Difluorobenzene	8.843	114	313579	25.000	ug/L	0.00
28) Chlorobenzene-d5	11.629	117	291428	25.000	ug/L	0.00
58) 1,4-Dichlorobenzene-d4	13.556	152	137656	25.000	ug/L	0.00
System Monitoring Compounds						
4) Vinyl Chloride-d3	2.363	65	83771	16.816	ug/L	0.00
Spiked Amount	25.000	Range 30 - 150	Recovery =	67.280%		
7) Chloroethane-d5	2.905	69	68303	17.855	ug/L	0.00
Spiked Amount	25.000	Range 30 - 150	Recovery =	71.440%		
11) 1,1-Dichloroethene-d2	4.021	65	37490	17.122	ug/L	0.00
Spiked Amount	25.000	Range 45 - 110	Recovery =	68.480%		
21) 2-Butanone-d5	7.075	46	55587	54.614	ug/L	0.00
Spiked Amount	50.000	Range 20 - 135	Recovery =	109.220%		
24) Chloroform-d	7.648	84	173289	19.370	ug/L	0.00
Spiked Amount	25.000	Range 40 - 150	Recovery =	77.480%		
26) 1,2-Dichloroethane-d4	8.307	65	102055m	21.668	ug/L	0.00
Spiked Amount	25.000	Range 70 - 130	Recovery =	86.680%		
32) Benzene-d6	8.270	84	338014	18.897	ug/L	0.00
Spiked Amount	25.000	Range 20 - 135	Recovery =	75.600%		
36) 1,2-Dichloropropane-d6	9.270	67	110853	20.440	ug/L	0.00
Spiked Amount	25.000	Range 70 - 120	Recovery =	81.760%		
41) Toluene-d8	10.319	98	297196	18.619	ug/L	0.00
Spiked Amount	25.000	Range 30 - 130	Recovery =	74.480%		
43) trans-1,3-Dichloroprop...	10.575	79	40880	19.617	ug/L	0.00
Spiked Amount	25.000	Range 30 - 135	Recovery =	78.480%		
47) 2-Hexanone-d5	10.922	63	37571	52.497	ug/L	0.00
Spiked Amount	50.000	Range 20 - 135	Recovery =	105.000%		
56) 1,1,2,2-Tetrachloroeth...	12.690	84	90335	23.977	ug/L	0.00
Spiked Amount	25.000	Range 45 - 120	Recovery =	95.920%		
66) 1,2-Dichlorobenzene-d4	13.849	152	104007	21.292	ug/L	0.00
Spiked Amount	25.000	Range 75 - 120	Recovery =	85.160%		
Target Compounds						
16) Methylene chloride	4.917	84	14603	3.103	ug/L	93

(#) = qualifier out of range (m) = manual integration (+) = signals summed

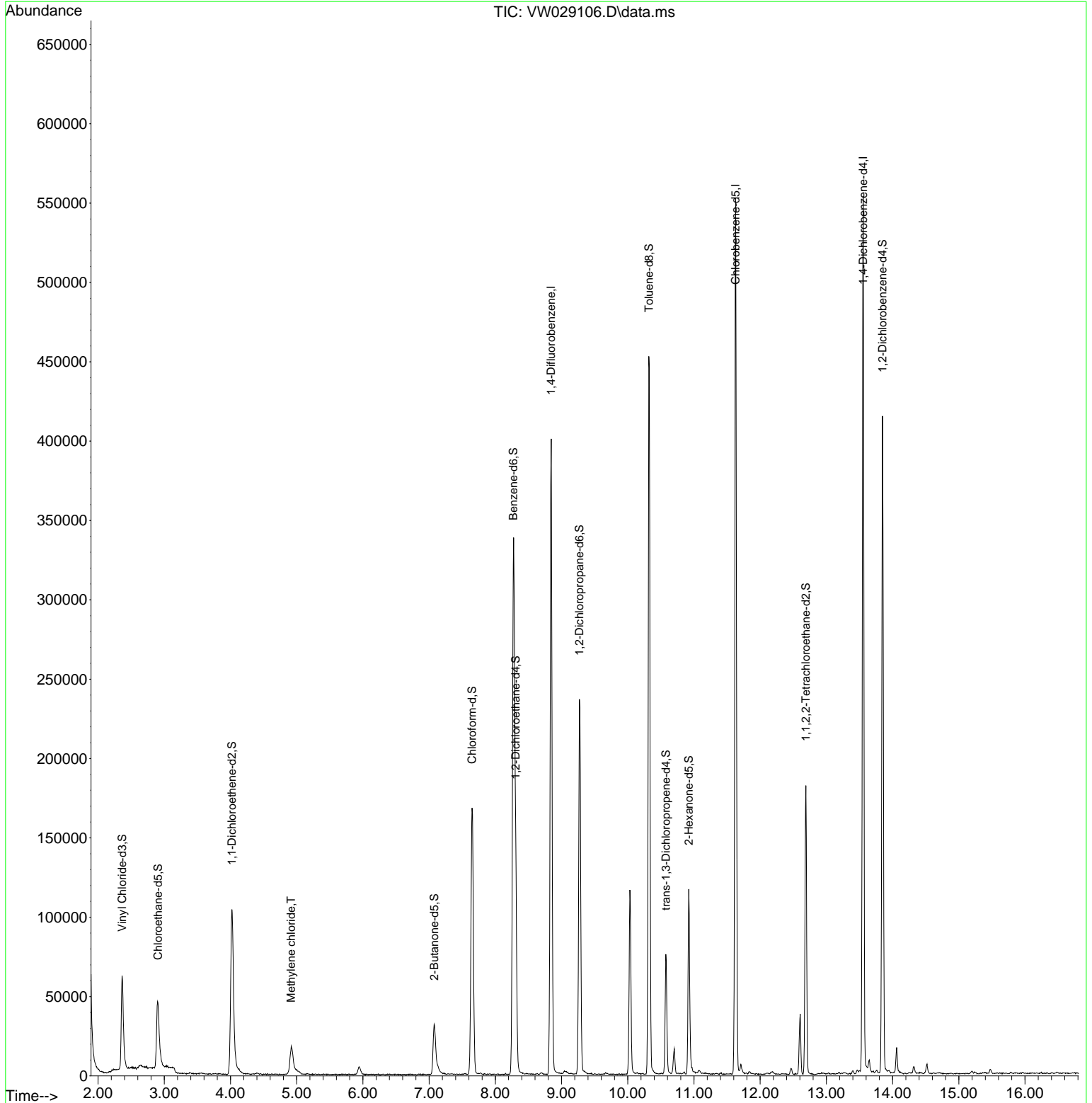
Data Path : Z:\voasrv\HPCHEM1\MSVOA_W\Data\VW061224\
 Data File : VW029106.D
 Acq On : 12 Jun 2024 14:50
 Operator : SY/MD
 Sample : P2844-08
 Misc : 5.00g/10mL/MSVOA_W/SOIL/B
 ALS Vial : 10 Sample Multiplier: 1

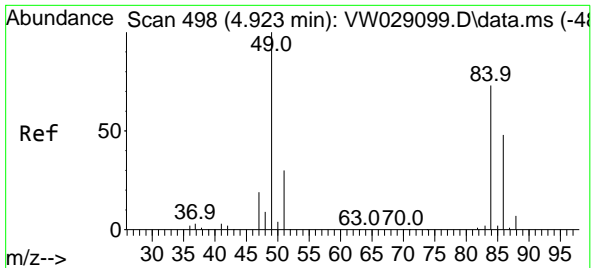
Instrument :
 MSVOA_W
 ClientSampleId :
 A4DD5

Quant Time: Jun 13 00:50:28 2024
 Quant Method : Z:\voasrv\HPCHEM1\MSVOA_W\Method\SFAMWLM060324SMA.M
 Quant Title : SFAM01.0
 QLast Update : Thu Jun 13 00:47:39 2024
 Response via : Initial Calibration

Manual Integrations
APPROVED

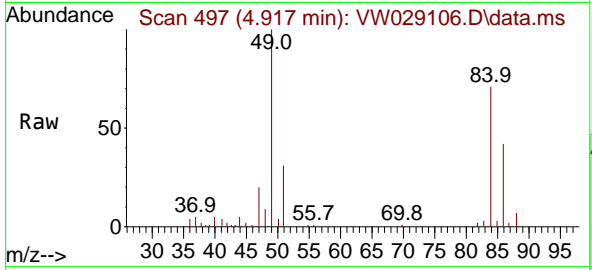
Reviewed By :Semsettin Yesilyurt 06/13/2024
 Supervised By :Mahesh Dadoda 06/13/2024





#16
 Methylene chloride
 Concen: 3.103 ug/L
 RT: 4.917 min Scan# 49
 Delta R.T. -0.006 min
 Lab File: VW029106.D
 Acq: 12 Jun 2024 14:50

Instrument : MSVOA_W
 Client Sample Id : A4DD5



Tgt Ion: 84 Resp: 1460

Ion	Ratio	Lower	Upper
84	100		
86	58.8	43.8	81.4
49	140.5	91.3	169.5

Manual Integrations
APPROVED
 Reviewed By : Semsettin Yesilyurt 06/13/2024
 Supervised By : Mahesh Dadoda 06/13/2024

