

Data Path : Z:\voasrv\HPCHEM1\MSVOA_W\Data\VW061924\
 Data File : VW029218.D
 Acq On : 19 Jun 2024 16:35
 Operator : SY/MD
 Sample : P2934-20
 Misc : 6.21g/10mL/MSVOA_W/SOIL/A
 ALS Vial : 1 Sample Multiplier: 1

Instrument :
 MSVOA_W
 ClientSampleId :
 A4B56

Integration Parameters: LSCINT.P

Integrator: RTE
 Smoothing : OFF
 Sampling : 1
 Start Thrs : 0.2
 Stop Thrs : 0

Filtering: 5
 Min Area: 0 % of largest Peak
 Max Peaks: 100
 Peak Location: TOP

If leading or trailing edge < 100 prefer < Baseline drop else tangent >
 Peak separation: 5

Method : Z:\voasrv\HPCHEM1\MSVOA_W\Method\SFAMWLM061824SMA.M
 Title : SFAM01.0

Signal : TIC: VW029218.D\data.ms

| peak # | R.T. min | first scan | max scan | last scan | PK TY | peak height | corr. area | corr. % max. | % of total |
|--------|----------|------------|----------|-----------|-------|-------------|------------|--------------|------------|
| 1 | 2.216 | 52 | 54 | 55 | rBV2 | 1685 | 1471 | 0.11% | 0.015% |
| 2 | 2.363 | 72 | 78 | 90 | rBV | 53746 | 148297 | 10.67% | 1.464% |
| 3 | 2.899 | 158 | 166 | 186 | rBV | 52994 | 162382 | 11.68% | 1.604% |
| 4 | 3.460 | 255 | 258 | 259 | rBV3 | 820 | 947 | 0.07% | 0.009% |
| 5 | 3.655 | 286 | 290 | 291 | rBV4 | 834 | 910 | 0.07% | 0.009% |
| 6 | 3.844 | 319 | 321 | 324 | rBV4 | 692 | 721 | 0.05% | 0.007% |
| 7 | 3.942 | 333 | 337 | 339 | rBV4 | 850 | 1144 | 0.08% | 0.011% |
| 8 | 4.021 | 339 | 350 | 363 | rBV2 | 114728 | 412764 | 29.70% | 4.076% |
| 9 | 4.295 | 393 | 395 | 399 | rVB5 | 964 | 1112 | 0.08% | 0.011% |
| 10 | 4.332 | 399 | 401 | 403 | rBV3 | 574 | 628 | 0.05% | 0.006% |
| 11 | 4.503 | 426 | 429 | 431 | rBV4 | 640 | 797 | 0.06% | 0.008% |
| 12 | 4.655 | 451 | 454 | 457 | rVB5 | 565 | 669 | 0.05% | 0.007% |
| 13 | 4.692 | 457 | 460 | 463 | rVB4 | 729 | 768 | 0.06% | 0.008% |
| 14 | 4.801 | 476 | 478 | 481 | rVB4 | 655 | 713 | 0.05% | 0.007% |
| 15 | 4.917 | 487 | 497 | 498 | rBV2 | 7105 | 15031 | 1.08% | 0.148% |
| 16 | 5.100 | 525 | 527 | 531 | rBV3 | 884 | 1196 | 0.09% | 0.012% |
| 17 | 5.222 | 546 | 547 | 552 | rVB2 | 653 | 908 | 0.07% | 0.009% |
| 18 | 5.710 | 622 | 627 | 628 | rBV4 | 599 | 716 | 0.05% | 0.007% |
| 19 | 5.941 | 653 | 665 | 673 | rBV6 | 7446 | 22993 | 1.65% | 0.227% |
| 20 | 6.045 | 678 | 682 | 684 | rVV4 | 531 | 930 | 0.07% | 0.009% |
| 21 | 6.094 | 687 | 690 | 691 | rBV3 | 695 | 741 | 0.05% | 0.007% |
| 22 | 6.136 | 695 | 697 | 699 | rBV3 | 679 | 712 | 0.05% | 0.007% |
| 23 | 6.185 | 701 | 705 | 708 | rBV4 | 444 | 657 | 0.05% | 0.006% |
| 24 | 6.252 | 714 | 716 | 718 | rBV3 | 876 | 610 | 0.04% | 0.006% |
| 25 | 6.295 | 721 | 723 | 726 | rVV3 | 956 | 788 | 0.06% | 0.008% |
| 26 | 6.393 | 736 | 739 | 742 | rVB3 | 594 | 649 | 0.05% | 0.006% |
| 27 | 6.417 | 742 | 743 | 746 | rVB3 | 1177 | 710 | 0.05% | 0.007% |
| 28 | 6.472 | 749 | 752 | 754 | rBV4 | 681 | 670 | 0.05% | 0.007% |
| 29 | 6.521 | 757 | 760 | 764 | rVB6 | 526 | 620 | 0.04% | 0.006% |
| 30 | 6.612 | 772 | 775 | 778 | rBV5 | 747 | 1023 | 0.07% | 0.010% |
| 31 | 6.825 | 809 | 810 | 814 | rVB3 | 627 | 667 | 0.05% | 0.007% |
| 32 | 6.868 | 814 | 817 | 819 | rBV3 | 819 | 1003 | 0.07% | 0.010% |
| 33 | 6.935 | 825 | 828 | 831 | rBV5 | 620 | 908 | 0.07% | 0.009% |
| 34 | 7.075 | 843 | 851 | 868 | rVV | 46484 | 147445 | 10.61% | 1.456% |
| 35 | 7.575 | 929 | 933 | 934 | rBV4 | 487 | 620 | 0.04% | 0.006% |
| 36 | 7.648 | 935 | 945 | 958 | rVB | 250239 | 601898 | 43.30% | 5.944% |

Data Path : Z:\voasrv\HPCHEM1\MSVOA_W\Data\VW061924\
 Data File : VW029218.D
 Acq On : 19 Jun 2024 16:35
 Operator : SY/MD
 Sample : P2934-20
 Misc : 6.21g/10mL/MSVOA_W/SOIL/A
 ALS Vial : 1 Sample Multiplier: 1

Instrument :
 MSVOA_W
 ClientSampleId :
 A4B56

Integration Parameters: LSCINT.P

Integrator: RTE
 Smoothing : OFF
 Sampling : 1
 Start Thrs: 0.2
 Stop Thrs : 0

Filtering: 5
 Min Area: 0 % of largest Peak
 Max Peaks: 100
 Peak Location: TOP

If leading or trailing edge < 100 prefer < Baseline drop else tangent >
 Peak separation: 5

Method : Z:\voasrv\HPCHEM1\MSVOA_W\Method\SFAMWLM061824SMA.M
 Title : SFAM01.0

| | | | | | | | | | |
|----|--------|------|------|------|------|--------|---------|---------|---------|
| 37 | 7.776 | 962 | 966 | 969 | rVB5 | 727 | 1280 | 0.09% | 0.013% |
| 38 | 7.880 | 981 | 983 | 988 | rBV6 | 769 | 1134 | 0.08% | 0.011% |
| 39 | 7.941 | 992 | 993 | 996 | rBV3 | 683 | 637 | 0.05% | 0.006% |
| 40 | 8.075 | 1011 | 1015 | 1016 | rBV4 | 533 | 702 | 0.05% | 0.007% |
| 41 | 8.087 | 1016 | 1017 | 1024 | rVB7 | 797 | 1107 | 0.08% | 0.011% |
| 42 | 8.154 | 1024 | 1028 | 1030 | rBV4 | 658 | 996 | 0.07% | 0.010% |
| 43 | 8.209 | 1033 | 1037 | 1038 | rBV3 | 619 | 744 | 0.05% | 0.007% |
| 44 | 8.276 | 1038 | 1048 | 1064 | rBV2 | 463057 | 1390004 | 100.00% | 13.727% |
| 45 | 8.569 | 1095 | 1096 | 1099 | rVB3 | 915 | 768 | 0.06% | 0.008% |
| 46 | 8.599 | 1099 | 1101 | 1103 | rBV3 | 1145 | 1116 | 0.08% | 0.011% |
| 47 | 8.691 | 1113 | 1116 | 1122 | rVB8 | 1294 | 2459 | 0.18% | 0.024% |
| 48 | 8.843 | 1129 | 1141 | 1153 | rBV | 564327 | 1126815 | 81.07% | 11.128% |
| 49 | 9.136 | 1187 | 1189 | 1191 | rVB3 | 1118 | 879 | 0.06% | 0.009% |
| 50 | 9.160 | 1191 | 1193 | 1196 | rBV4 | 1179 | 1273 | 0.09% | 0.013% |
| 51 | 9.197 | 1196 | 1199 | 1202 | rBV4 | 725 | 983 | 0.07% | 0.010% |
| 52 | 9.270 | 1202 | 1211 | 1222 | rBV | 332766 | 684899 | 49.27% | 6.764% |
| 53 | 9.593 | 1260 | 1264 | 1267 | rVB5 | 660 | 787 | 0.06% | 0.008% |
| 54 | 9.660 | 1271 | 1275 | 1280 | rVV7 | 1856 | 3424 | 0.25% | 0.034% |
| 55 | 9.721 | 1283 | 1285 | 1289 | rVB4 | 728 | 760 | 0.05% | 0.008% |
| 56 | 10.032 | 1325 | 1336 | 1349 | rBV | 157095 | 284966 | 20.50% | 2.814% |
| 57 | 10.245 | 1367 | 1371 | 1374 | rBV6 | 577 | 892 | 0.06% | 0.009% |
| 58 | 10.319 | 1375 | 1383 | 1393 | rBV | 580427 | 1049965 | 75.54% | 10.369% |
| 59 | 10.502 | 1411 | 1413 | 1415 | rVB2 | 791 | 682 | 0.05% | 0.007% |
| 60 | 10.575 | 1419 | 1425 | 1435 | rBV | 95538 | 167688 | 12.06% | 1.656% |
| 61 | 10.703 | 1440 | 1446 | 1452 | rVV2 | 8241 | 15514 | 1.12% | 0.153% |
| 62 | 10.770 | 1455 | 1457 | 1459 | rBV3 | 912 | 922 | 0.07% | 0.009% |
| 63 | 10.855 | 1466 | 1471 | 1472 | rBV5 | 794 | 1472 | 0.11% | 0.015% |
| 64 | 10.922 | 1476 | 1482 | 1497 | rBV | 172833 | 307531 | 22.12% | 3.037% |
| 65 | 11.184 | 1524 | 1525 | 1529 | rVB3 | 1444 | 1193 | 0.09% | 0.012% |
| 66 | 11.227 | 1529 | 1532 | 1536 | rBV5 | 908 | 1431 | 0.10% | 0.014% |
| 67 | 11.270 | 1536 | 1539 | 1542 | rVB4 | 729 | 891 | 0.06% | 0.009% |
| 68 | 11.294 | 1542 | 1543 | 1546 | rBV3 | 669 | 733 | 0.05% | 0.007% |
| 69 | 11.392 | 1556 | 1559 | 1563 | rBV6 | 777 | 1145 | 0.08% | 0.011% |
| 70 | 11.544 | 1583 | 1584 | 1588 | rVB4 | 747 | 743 | 0.05% | 0.007% |
| 71 | 11.629 | 1588 | 1598 | 1607 | rBV | 729643 | 1231132 | 88.57% | 12.158% |
| 72 | 11.837 | 1626 | 1632 | 1639 | rVV | 1797 | 5087 | 0.37% | 0.050% |
| 73 | 11.892 | 1639 | 1641 | 1644 | rVB4 | 768 | 890 | 0.06% | 0.009% |
| 74 | 12.032 | 1660 | 1664 | 1666 | rBV5 | 1002 | 1349 | 0.10% | 0.013% |
| 75 | 12.117 | 1675 | 1678 | 1680 | rBV4 | 1244 | 1333 | 0.10% | 0.013% |
| 76 | 12.166 | 1683 | 1686 | 1687 | rBV3 | 1258 | 1013 | 0.07% | 0.010% |

Data Path : Z:\voasrv\HPCHEM1\MSVOA_W\Data\VW061924\
 Data File : VW029218.D
 Acq On : 19 Jun 2024 16:35
 Operator : SY/MD
 Sample : P2934-20
 Misc : 6.21g/10mL/MSVOA_W/SOIL/A
 ALS Vial : 1 Sample Multiplier: 1

Instrument :
 MSVOA_W
 ClientSampleId :
 A4B56

Integration Parameters: LSCINT.P

Integrator: RTE
 Smoothing : OFF Filtering: 5
 Sampling : 1 Min Area: 0 % of largest Peak
 Start Thrs: 0.2 Max Peaks: 100
 Stop Thrs : 0 Peak Location: TOP

If leading or trailing edge < 100 prefer < Baseline drop else tangent >
 Peak separation: 5

Method : Z:\voasrv\HPCHEM1\MSVOA_W\Method\SFAMWLM061824SMA.M
 Title : SFAM01.0

| | | | | | | | | | |
|-----|--------|------|------|------|------|--------|--------|--------|--------|
| 77 | 12.245 | 1698 | 1699 | 1703 | rVB4 | 1385 | 905 | 0.07% | 0.009% |
| 78 | 12.337 | 1707 | 1714 | 1715 | rBV5 | 1166 | 1932 | 0.14% | 0.019% |
| 79 | 12.440 | 1725 | 1731 | 1732 | rBV5 | 2065 | 3321 | 0.24% | 0.033% |
| 80 | 12.465 | 1732 | 1735 | 1741 | rVB8 | 3407 | 5832 | 0.42% | 0.058% |
| 81 | 12.507 | 1741 | 1742 | 1745 | rBV3 | 916 | 1041 | 0.07% | 0.010% |
| 82 | 12.599 | 1750 | 1757 | 1764 | rVV3 | 19312 | 36398 | 2.62% | 0.359% |
| 83 | 12.690 | 1765 | 1772 | 1779 | rVV | 240561 | 402734 | 28.97% | 3.977% |
| 84 | 12.769 | 1782 | 1785 | 1793 | rVB6 | 5474 | 10492 | 0.75% | 0.104% |
| 85 | 12.824 | 1793 | 1794 | 1797 | rBV3 | 972 | 1276 | 0.09% | 0.013% |
| 86 | 12.885 | 1800 | 1804 | 1808 | rBV6 | 1607 | 3051 | 0.22% | 0.030% |
| 87 | 12.952 | 1808 | 1815 | 1821 | rVB6 | 3173 | 7813 | 0.56% | 0.077% |
| 88 | 13.013 | 1821 | 1825 | 1826 | rBV4 | 1694 | 2291 | 0.16% | 0.023% |
| 89 | 13.080 | 1832 | 1836 | 1840 | rVB6 | 2126 | 3000 | 0.22% | 0.030% |
| 90 | 13.117 | 1840 | 1842 | 1844 | rBV3 | 1225 | 1537 | 0.11% | 0.015% |
| 91 | 13.184 | 1849 | 1853 | 1860 | rVB2 | 7251 | 11845 | 0.85% | 0.117% |
| 92 | 13.294 | 1867 | 1871 | 1879 | rVB4 | 4028 | 7138 | 0.51% | 0.070% |
| 93 | 13.403 | 1881 | 1889 | 1895 | rBV | 14821 | 29471 | 2.12% | 0.291% |
| 94 | 13.556 | 1903 | 1914 | 1919 | rBV | 599629 | 966628 | 69.54% | 9.546% |
| 95 | 13.641 | 1926 | 1928 | 1933 | rVB | 18264 | 21961 | 1.58% | 0.217% |
| 96 | 13.763 | 1942 | 1948 | 1954 | rVB2 | 10352 | 19063 | 1.37% | 0.188% |
| 97 | 13.849 | 1955 | 1962 | 1969 | rBV | 425874 | 680971 | 48.99% | 6.725% |
| 98 | 14.062 | 1993 | 1997 | 2013 | rVB3 | 15909 | 39467 | 2.84% | 0.390% |
| 99 | 14.318 | 2036 | 2039 | 2043 | rBV5 | 4346 | 6228 | 0.45% | 0.062% |
| 100 | 14.513 | 2063 | 2071 | 2079 | rVB5 | 10992 | 29664 | 2.13% | 0.293% |

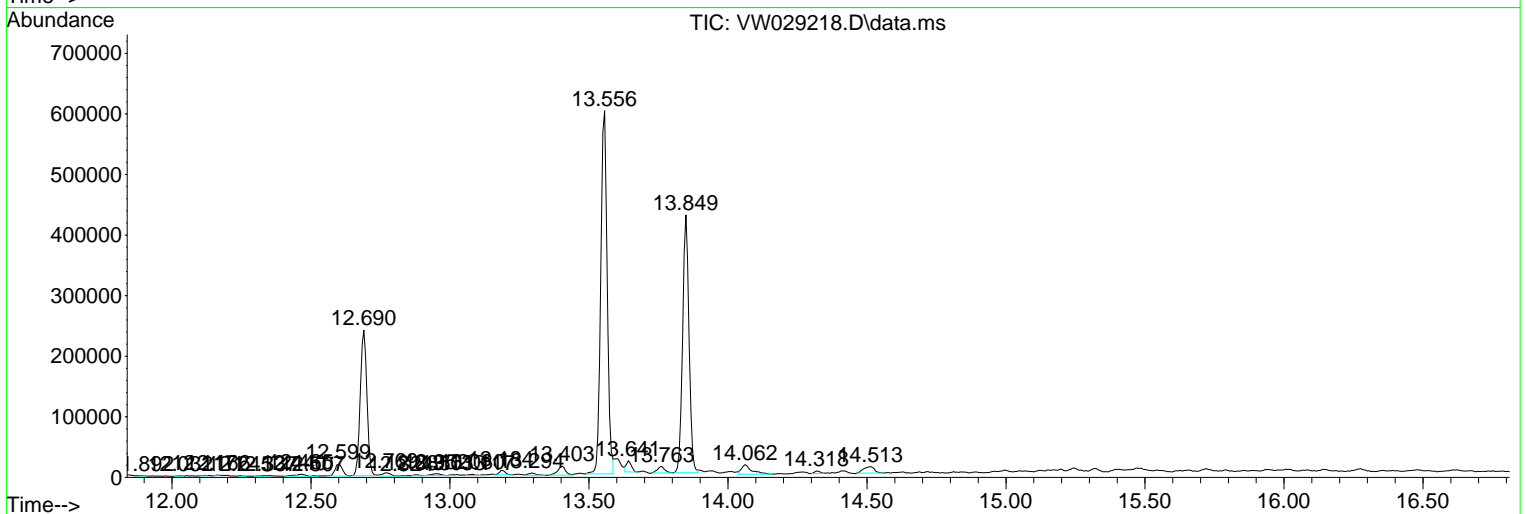
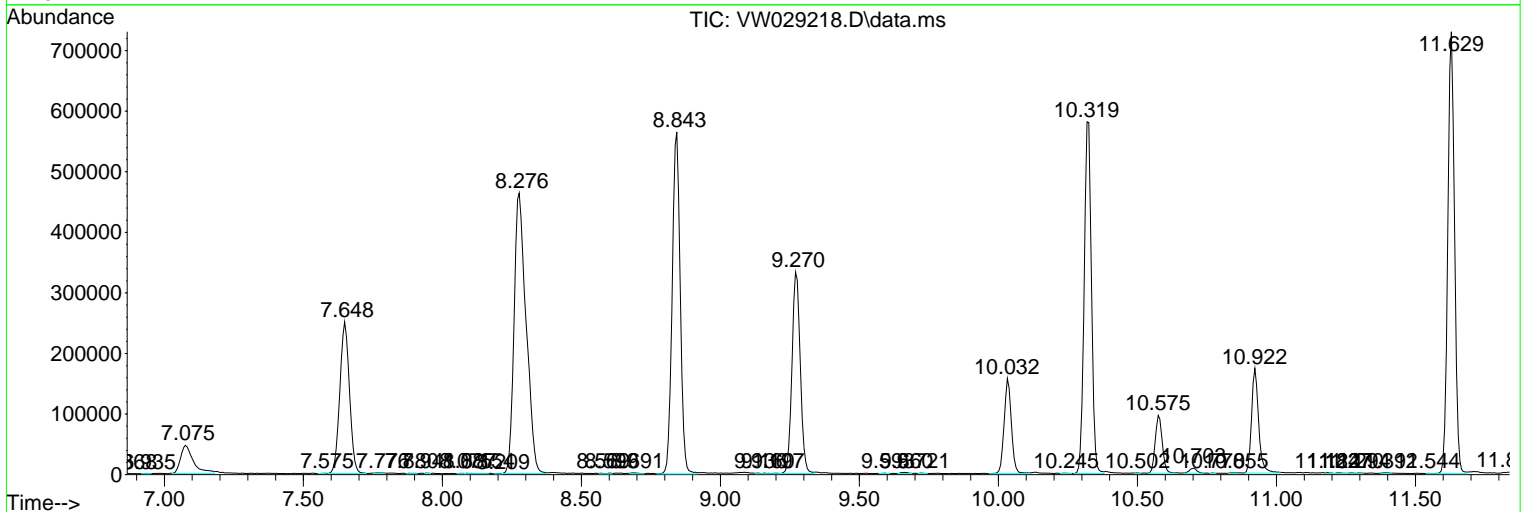
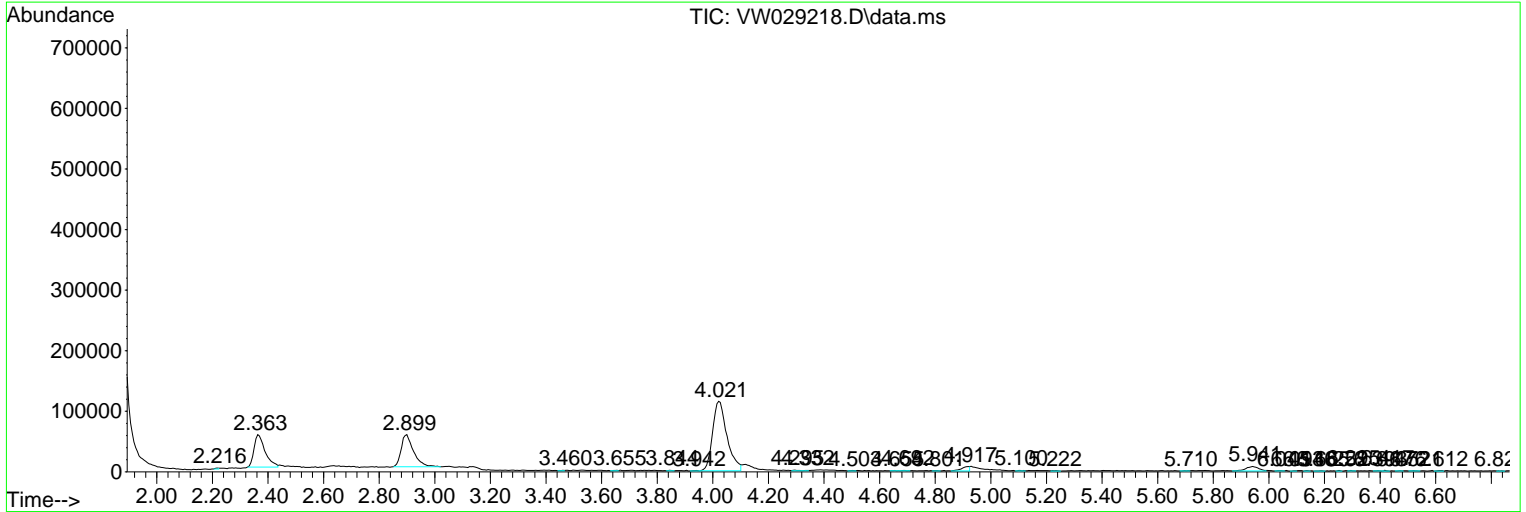
Sum of corrected areas: 10126216

Data Path : Z:\voasrv\HPCHEM1\MSVOA_W\Data\VW061924\
 Data File : VW029218.D
 Acq On : 19 Jun 2024 16:35
 Operator : SY/MD
 Sample : P2934-20
 Misc : 6.21g/10mL/MSVOA_W/SOIL/A
 ALS Vial : 1 Sample Multiplier: 1

Instrument :
 MSVOA_W
 ClientSampleId :
 A4B56

Quant Method : Z:\voasrv\HPCHEM1\MSVOA_W\Method\SFAMWLM061824SMA.M
 Quant Title : SFAM01.0

TIC Library : C:\Database\NIST20.L
 TIC Integration Parameters: LSCINT.P



Library Search Compound Report

Data Path : Z:\voasrv\HPCHEM1\MSVOA_W\Data\VW061924\
Data File : VW029218.D
Acq On : 19 Jun 2024 16:35
Operator : SY/MD
Sample : P2934-20
Misc : 6.21g/10mL/MSVOA_W/SOIL/A
ALS Vial : 1 Sample Multiplier: 1

Instrument :
MSVOA_W
ClientSampleId :
A4B56

Quant Method : Z:\voasrv\HPCHEM1\MSVOA_W\Method\SFAMWLM061824SMA.M
Quant Title : SFAM01.0

TIC Library : C:\Database\NIST20.L
TIC Integration Parameters: LSCINT.P

No Library Search Compounds Detected

Data Path : Z:\voasrv\HPCHEM1\MSVOA_W\Data\VW061924\
Data File : VW029218.D
Acq On : 19 Jun 2024 16:35
Operator : SY/MD
Sample : P2934-20
Misc : 6.21g/10mL/MSVOA_W/SOIL/A
ALS Vial : 1 Sample Multiplier: 1

Instrument :
MSVOA_W
ClientSampleId :
A4B56

Quant Method : Z:\voasrv\HPCHEM1\MSVOA_W\Method\SFAMWLM061824SMA.M
Quant Title : SFAM01.0

TIC Library : C:\Database\NIST0.L
TIC Integration Parameters: LSCINT.P

| TIC Top Hit name | RT | EstConc | Units | Response | --Internal Standard-- | | | |
|------------------|----|---------|-------|----------|-----------------------|----|------|------|
| | | | | | # | RT | Resp | Conc |
