

Data Path : Z:\voasrv\HPCHEM1\MSVOA_W\Data\VW061924\
 Data File : VW029226.D
 Acq On : 19 Jun 2024 20:40
 Operator : SY/MD
 Sample : P2963-03
 Misc : 4.48g/10mL/MSVOA_W/SOIL/A
 ALS Vial : 1 Sample Multiplier: 1

Instrument :
 MSVOA_W
 ClientSampleId :
 A4B48

Integration Parameters: LSCINT.P

Integrator: RTE
 Smoothing : OFF
 Sampling : 1
 Start Thrs: 0.2
 Stop Thrs : 0

Filtering: 5
 Min Area: 0 % of largest Peak
 Max Peaks: 100
 Peak Location: TOP

If leading or trailing edge < 100 prefer < Baseline drop else tangent >
 Peak separation: 5

Method : Z:\voasrv\HPCHEM1\MSVOA_W\Method\SFAMWLM061824SMA.M
 Title : SFAM01.0

Signal : TIC: VW029226.D\data.ms

peak #	R.T. min	first scan	max scan	last scan	PK TY	peak height	corr. area	corr. % max.	% of total
1	2.229	54	56	59	rBV4	1028	1179	0.08%	0.010%
2	2.363	71	78	90	rBV	62828	160580	11.48%	1.360%
3	2.582	112	114	115	rBV2	1320	859	0.06%	0.007%
4	2.631	119	122	128	rVV7	3395	6829	0.49%	0.058%
5	2.729	136	138	141	rVB4	2468	2061	0.15%	0.017%
6	2.899	158	166	179	rBV	56532	171243	12.24%	1.450%
7	3.186	212	213	217	rVB4	1336	1239	0.09%	0.010%
8	3.338	236	238	240	rVB3	809	771	0.06%	0.007%
9	3.387	243	246	253	rVB7	1545	2642	0.19%	0.022%
10	3.466	256	259	262	rBV6	911	1597	0.11%	0.014%
11	3.619	281	284	287	rVB5	1082	1199	0.09%	0.010%
12	4.021	337	350	363	rBV	128612	417840	29.87%	3.538%
13	4.112	363	365	374	rVB	11620	27004	1.93%	0.229%
14	4.387	400	410	422	rBV	17472	56233	4.02%	0.476%
15	4.503	427	429	434	rVB5	697	874	0.06%	0.007%
16	4.923	488	498	510	rVV3	10868	42659	3.05%	0.361%
17	5.295	557	559	561	rBV3	786	856	0.06%	0.007%
18	5.442	580	583	585	rVB4	1215	1239	0.09%	0.010%
19	5.618	608	612	616	rBV6	685	1259	0.09%	0.011%
20	5.765	631	636	639	rVV7	685	1142	0.08%	0.010%
21	5.838	646	648	652	rBV3	450	866	0.06%	0.007%
22	5.935	658	664	673	rVV8	3850	12203	0.87%	0.103%
23	6.350	728	732	734	rBV4	1067	1360	0.10%	0.012%
24	6.545	763	764	769	rVB4	695	818	0.06%	0.007%
25	6.594	769	772	774	rBV3	652	794	0.06%	0.007%
26	6.679	782	786	787	rBV4	870	865	0.06%	0.007%
27	6.716	787	792	794	rBV4	942	1242	0.09%	0.011%
28	6.807	805	807	811	rVB5	823	914	0.07%	0.008%
29	6.984	831	836	840	rBV6	835	1432	0.10%	0.012%
30	7.075	840	851	864	rBV	50682	151203	10.81%	1.280%
31	7.325	890	892	894	rBV2	762	774	0.06%	0.007%
32	7.563	929	931	934	rVB4	906	992	0.07%	0.008%
33	7.648	934	945	956	rBV	247979	611125	43.69%	5.175%
34	7.758	961	963	965	rVV3	1182	1294	0.09%	0.011%
35	7.783	965	967	969	rVB2	980	974	0.07%	0.008%
36	7.813	970	972	977	rVB6	1115	1357	0.10%	0.011%

Data Path : Z:\voasrv\HPCHEM1\MSVOA_W\Data\VW061924\
 Data File : VW029226.D
 Acq On : 19 Jun 2024 20:40
 Operator : SY/MD
 Sample : P2963-03
 Misc : 4.48g/10mL/MSVOA_W/SOIL/A
 ALS Vial : 1 Sample Multiplier: 1

Instrument :
 MSVOA_W
 ClientSampleId :
 A4B48

Integration Parameters: LSCINT.P

Integrator: RTE
 Smoothing : OFF
 Sampling : 1
 Start Thrs: 0.2
 Stop Thrs : 0

Filtering: 5
 Min Area: 0 % of largest Peak
 Max Peaks: 100
 Peak Location: TOP

If leading or trailing edge < 100 prefer < Baseline drop else tangent >
 Peak separation: 5

Method : Z:\voasrv\HPCHEM1\MSVOA_W\Method\SFAMWLM061824SMA.M
 Title : SFAM01.0

37	7.862	977	980	981	rBV3	1121	1179	0.08%	0.010%
38	7.941	989	993	997	rVB7	1322	2092	0.15%	0.018%
39	8.026	1003	1007	1009	rBV5	941	1042	0.07%	0.009%
40	8.057	1009	1012	1014	rBV4	868	891	0.06%	0.008%
41	8.081	1014	1016	1021	rVB5	744	821	0.06%	0.007%
42	8.276	1037	1048	1066	rBV2	462382	1398897	100.00%	11.846%
43	8.429	1070	1073	1077	rVB6	1805	2616	0.19%	0.022%
44	8.478	1079	1081	1083	rBV3	898	813	0.06%	0.007%
45	8.563	1093	1095	1097	rBV3	1212	904	0.06%	0.008%
46	8.697	1111	1117	1122	rBV9	1837	5024	0.36%	0.043%
47	8.782	1127	1131	1132	rBV4	1479	1659	0.12%	0.014%
48	8.837	1132	1140	1153	rVV	490283	1000883	71.55%	8.476%
49	8.990	1163	1165	1167	rBV3	1019	960	0.07%	0.008%
50	9.063	1170	1177	1185	rBV4	6102	16358	1.17%	0.139%
51	9.191	1196	1198	1202	rVB5	915	875	0.06%	0.007%
52	9.270	1202	1211	1223	rBV	333522	684783	48.95%	5.799%
53	9.380	1227	1229	1231	rVV3	1561	1386	0.10%	0.012%
54	9.435	1236	1238	1240	rVB3	1075	891	0.06%	0.008%
55	9.465	1240	1243	1245	rVB3	863	870	0.06%	0.007%
56	9.618	1266	1268	1271	rBV4	734	897	0.06%	0.008%
57	9.666	1271	1276	1282	rVB9	1822	4485	0.32%	0.038%
58	9.715	1282	1284	1285	rBV2	1355	1068	0.08%	0.009%
59	9.782	1292	1295	1296	rBV3	679	824	0.06%	0.007%
60	10.032	1329	1336	1344	rBV	137259	248198	17.74%	2.102%
61	10.215	1364	1366	1371	rVB6	1024	1119	0.08%	0.009%
62	10.319	1375	1383	1392	rBV	560059	1007879	72.05%	8.535%
63	10.575	1419	1425	1437	rBV	83944	147601	10.55%	1.250%
64	10.697	1440	1445	1451	rVB2	10921	20657	1.48%	0.175%
65	10.812	1463	1464	1466	rBV2	1619	1471	0.11%	0.012%
66	10.922	1476	1482	1493	rBV	196868	337243	24.11%	2.856%
67	11.629	1591	1598	1607	rBV	632213	1034406	73.94%	8.760%
68	11.867	1635	1637	1639	rBV3	2987	3149	0.23%	0.027%
69	12.129	1676	1680	1688	rBV10	5922	10840	0.77%	0.092%
70	12.251	1697	1700	1704	rVB2	10960	15199	1.09%	0.129%
71	12.306	1706	1709	1710	rBV3	3687	3984	0.28%	0.034%
72	12.599	1752	1757	1765	rVB2	45590	107164	7.66%	0.907%
73	12.690	1766	1772	1779	rVB	219081	360173	25.75%	3.050%
74	12.776	1782	1786	1793	rVB4	20835	38089	2.72%	0.323%
75	12.861	1794	1800	1802	rBV6	7285	15509	1.11%	0.131%
76	12.940	1808	1813	1824	rVB10	18376	60497	4.32%	0.512%

Data Path : Z:\voasrv\HPCHEM1\MSVOA_W\Data\VW061924\
 Data File : VW029226.D
 Acq On : 19 Jun 2024 20:40
 Operator : SY/MD
 Sample : P2963-03
 Misc : 4.48g/10mL/MSVOA_W/SOIL/A
 ALS Vial : 1 Sample Multiplier: 1

Instrument :
 MSVOA_W
 ClientSampleId :
 A4B48

Integration Parameters: LSCINT.P

Integrator: RTE
 Smoothing : OFF Filtering: 5
 Sampling : 1 Min Area: 0 % of largest Peak
 Start Thrs: 0.2 Max Peaks: 100
 Stop Thrs : 0 Peak Location: TOP

If leading or trailing edge < 100 prefer < Baseline drop else tangent >
 Peak separation: 5

Method : Z:\voasrv\HPCHEM1\MSVOA_W\Method\SFAMWLM061824SMA.M
 Title : SFAM01.0

77	13.050	1826	1831	1838	rVB2	24825	55935	4.00%	0.474%
78	13.123	1838	1843	1846	rBV2	38103	59773	4.27%	0.506%
79	13.160	1846	1849	1852	rBV2	22214	28408	2.03%	0.241%
80	13.288	1867	1870	1875	rVB2	17256	24024	1.72%	0.203%
81	13.336	1875	1878	1881	rVB4	9448	11873	0.85%	0.101%
82	13.403	1881	1889	1893	rBV2	38114	89183	6.38%	0.755%
83	13.477	1899	1901	1905	rBV3	12084	14049	1.00%	0.119%
84	13.556	1908	1914	1919	rBV	388292	628014	44.89%	5.318%
85	13.696	1932	1937	1940	rBV6	22532	40711	2.91%	0.345%
86	13.849	1956	1962	1970	rBV	306320	599401	42.85%	5.076%
87	13.977	1980	1983	1986	rBV4	18871	31151	2.23%	0.264%
88	14.184	2014	2017	2021	rBV2	25150	35931	2.57%	0.304%
89	14.257	2025	2029	2034	rVB3	36944	66618	4.76%	0.564%
90	14.379	2044	2049	2053	rBV2	80673	128693	9.20%	1.090%
91	14.489	2063	2067	2073	rBV3	70303	185592	13.27%	1.572%
92	14.733	2104	2107	2111	rBV4	23019	29943	2.14%	0.254%
93	14.787	2113	2116	2119	rVV2	47375	74599	5.33%	0.632%
94	14.830	2120	2123	2130	rVB3	121969	242111	17.31%	2.050%
95	15.117	2167	2170	2173	rBV5	25437	41802	2.99%	0.354%
96	15.318	2198	2203	2209	rVB	302503	507492	36.28%	4.298%
97	15.391	2210	2215	2220	rBV4	58217	132113	9.44%	1.119%
98	15.562	2239	2243	2248	rBV5	39766	81752	5.84%	0.692%
99	15.720	2266	2269	2278	rVB5	78089	147025	10.51%	1.245%
100	16.269	2354	2359	2368	rVB	162623	321609	22.99%	2.723%

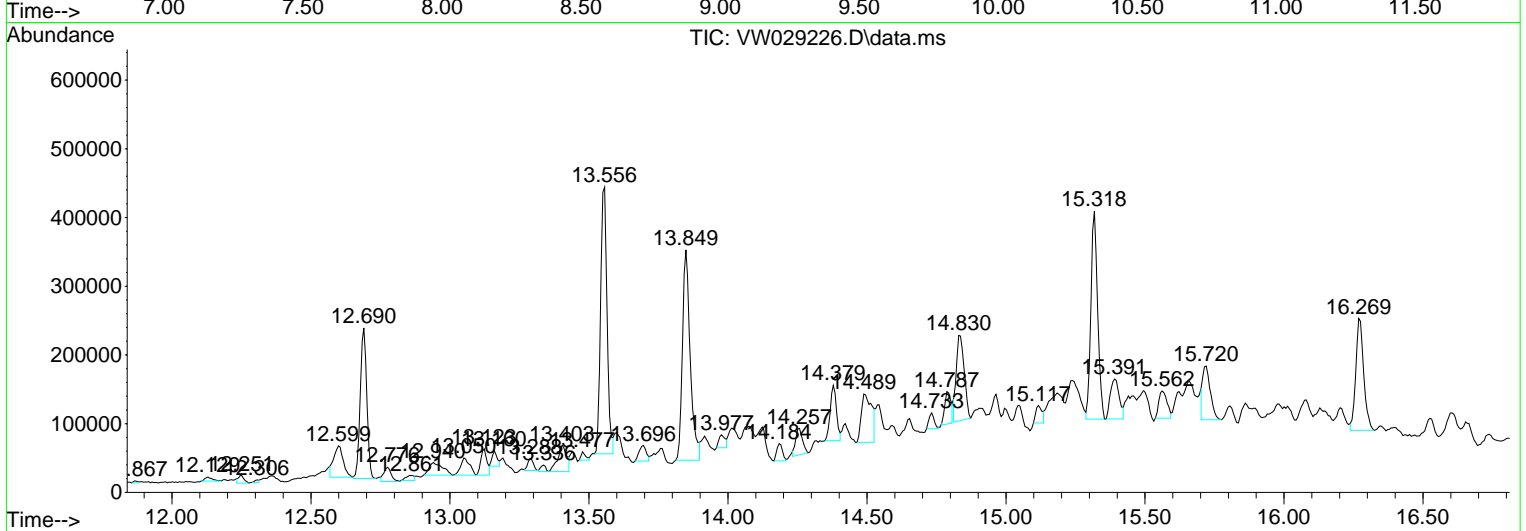
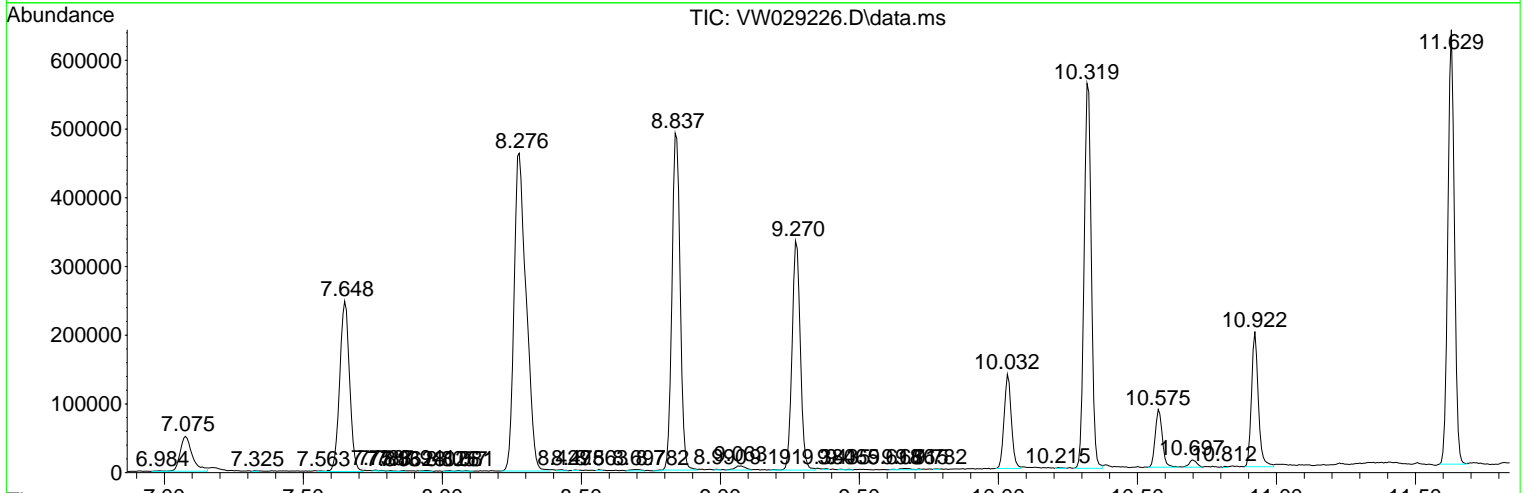
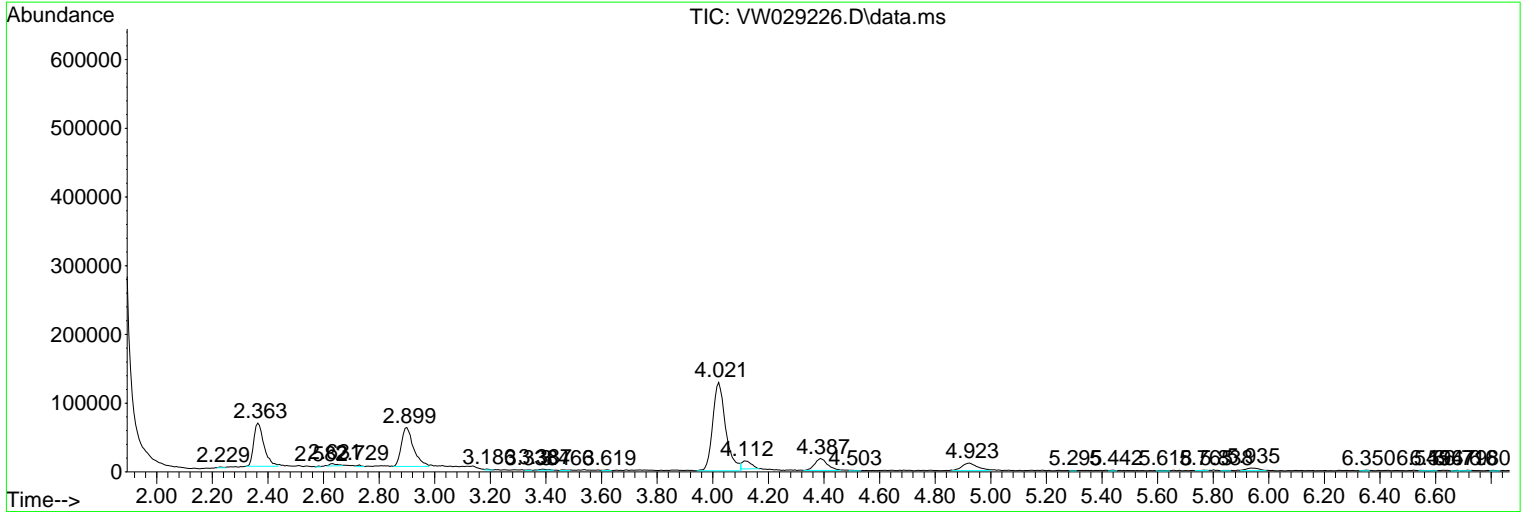
Sum of corrected areas: 11808716

Data Path : Z:\voasrv\HPCHEM1\MSVOA_W\Data\VW061924\
 Data File : VW029226.D
 Acq On : 19 Jun 2024 20:40
 Operator : SY/MD
 Sample : P2963-03
 Misc : 4.48g/10mL/MSVOA_W/SOIL/A
 ALS Vial : 1 Sample Multiplier: 1

Instrument :
 MSVOA_W
 ClientSampleId :
 A4B48

Quant Method : Z:\voasrv\HPCHEM1\MSVOA_W\Method\SFAMWLM061824SMA.M
 Quant Title : SFAM01.0

TIC Library : C:\Database\NIST20.L
 TIC Integration Parameters: LSCINT.P



Data Path : Z:\voasrv\HPCHEM1\MSVOA_W\Data\VW061924\
 Data File : VW029226.D
 Acq On : 19 Jun 2024 20:40
 Operator : SY/MD
 Sample : P2963-03
 Misc : 4.48g/10mL/MSVOA_W/SOIL/A
 ALS Vial : 1 Sample Multiplier: 1

Instrument :
 MSVOA_W
 ClientSampleId :
 A4B48

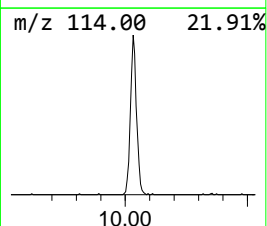
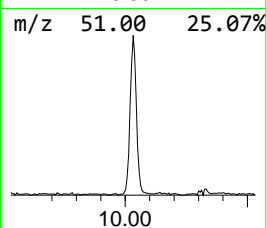
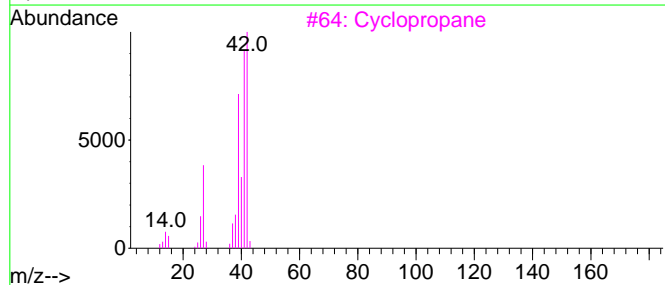
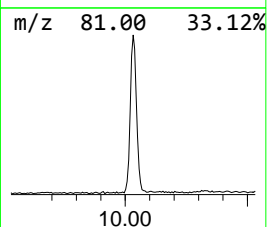
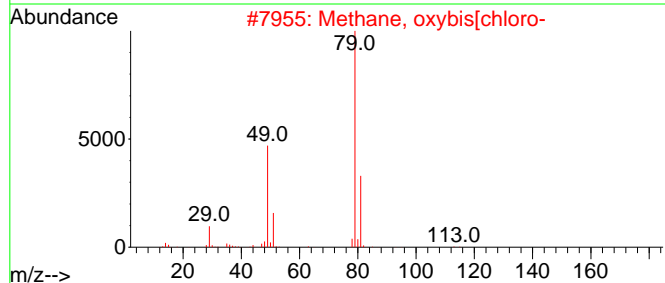
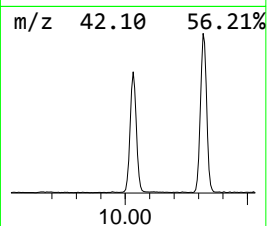
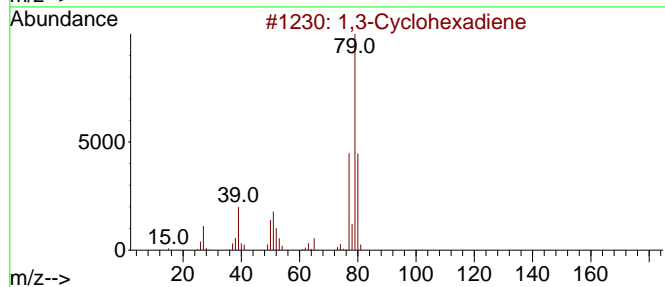
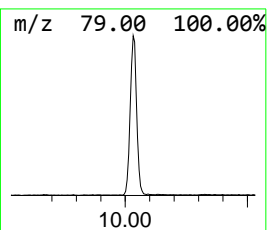
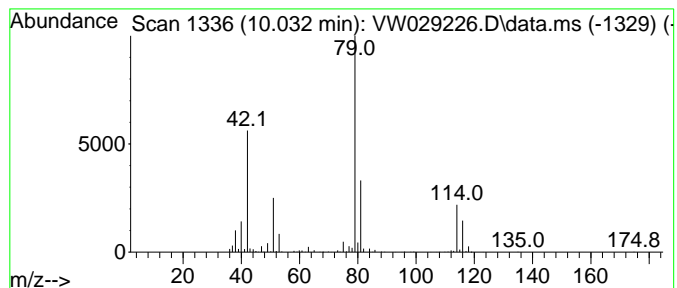
Quant Method : Z:\voasrv\HPCHEM1\MSVOA_W\Method\SFAMWLM061824SMA.M
 Quant Title : SFAM01.0

TIC Library : C:\Database\NIST20.L
 TIC Integration Parameters: LSCINT.P

 Peak Number 1 unknown-01 Concentration Rank 5

R.T.	EstConc	Area	Relative to ISTD	R.T.
10.032	6.20 ug/L	248198	1,4-Difluorobenzene	8.837

Hit#	of 5	Tentative ID	MW	MolForm	CAS#	Qual
1		1,3-Cyclohexadiene	80	C6H8	000592-57-4	25
2		Methane, oxybis[chloro-	114	C2H4Cl2O	000542-88-1	23
3		Cyclopropane	42	C3H6	000075-19-4	9
4		.alpha.,.alpha.-Dichloromethyl m...	114	C2H4Cl2O	004885-02-3	9
5		2-Propanol, 1,3-dichloro-	128	C3H6Cl2O	000096-23-1	9



Data Path : Z:\voasrv\HPCHEM1\MSVOA_W\Data\VW061924\
 Data File : VW029226.D
 Acq On : 19 Jun 2024 20:40
 Operator : SY/MD
 Sample : P2963-03
 Misc : 4.48g/10mL/MSVOA_W/SOIL/A
 ALS Vial : 1 Sample Multiplier: 1

Instrument :
 MSVOA_W
 ClientSampleId :
 A4B48

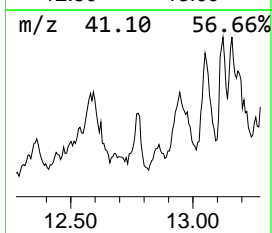
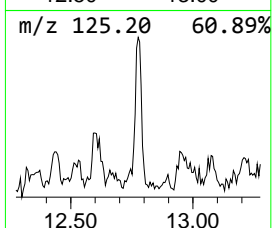
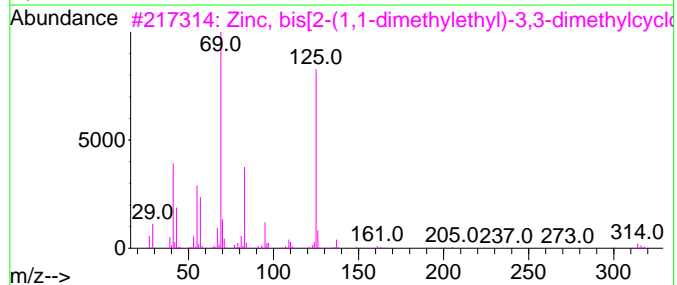
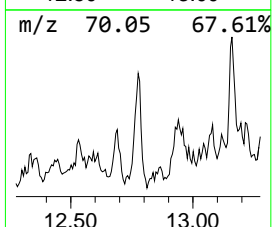
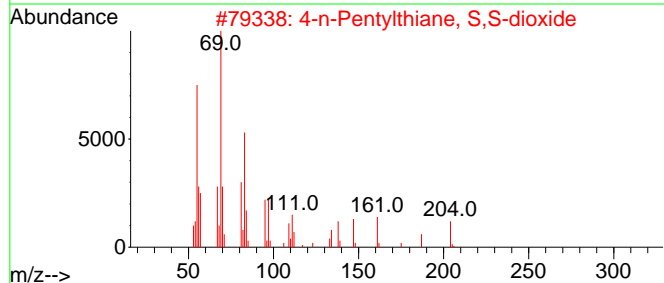
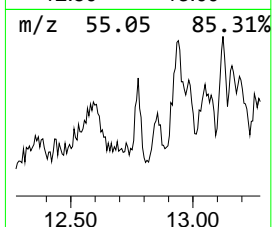
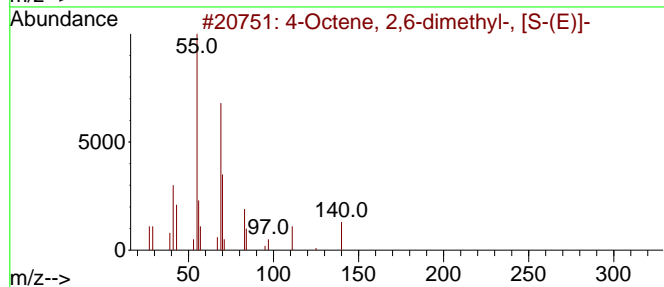
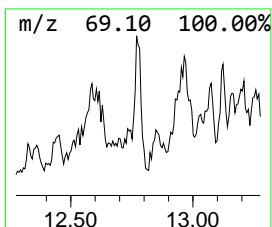
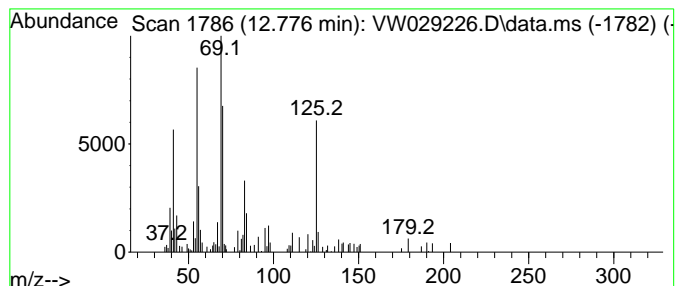
Quant Method : Z:\voasrv\HPCHEM1\MSVOA_W\Method\SFAMWLM061824SMA.M
 Quant Title : SFAM01.0

TIC Library : C:\Database\NIST20.L
 TIC Integration Parameters: LSCINT.P

 Peak Number 3 (DEL) Alkane: Straight-Chai... Concentration Rank 19

R.T.	EstConc	Area	Relative to ISTD	R.T.
12.776	1.52 ug/L	38089	1,4-Dichlorobenzene-d4	13.556

Hit#	of 5	Tentative ID	MW	MolForm	CAS#	Qual
1		4-Octene, 2,6-dimethyl-, [S-(E)]-	140	C10H20	062960-76-3	68
2		4-n-Pentylthiane, S,S-dioxide	204	C10H20O2S	065865-33-0	62
3		Zinc, bis[2-(1,1-dimethylethyl)-...]	314	C18H34Zn	074793-36-5	58
4		4-Octene, 2,6-dimethyl-, [S-(E)]-	140	C10H20	062960-76-3	58
5		1-Pentene, 2,3-dimethyl-	98	C7H14	003404-72-6	46



Data Path : Z:\voasrv\HPCHEM1\MSVOA_W\Data\VW061924\
 Data File : VW029226.D
 Acq On : 19 Jun 2024 20:40
 Operator : SY/MD
 Sample : P2963-03
 Misc : 4.48g/10mL/MSVOA_W/SOIL/A
 ALS Vial : 1 Sample Multiplier: 1

Instrument :
 MSVOA_W
 ClientSampleId :
 A4B48

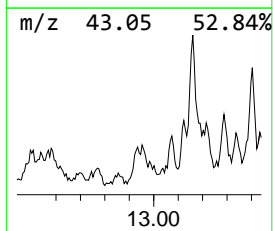
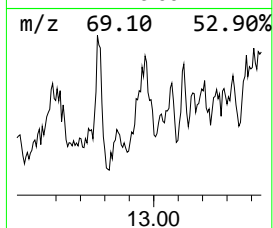
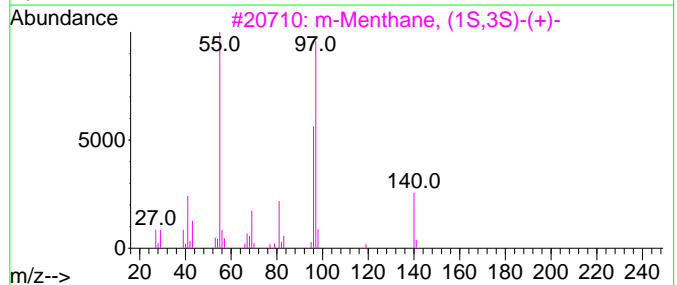
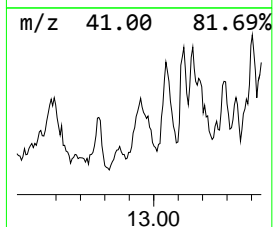
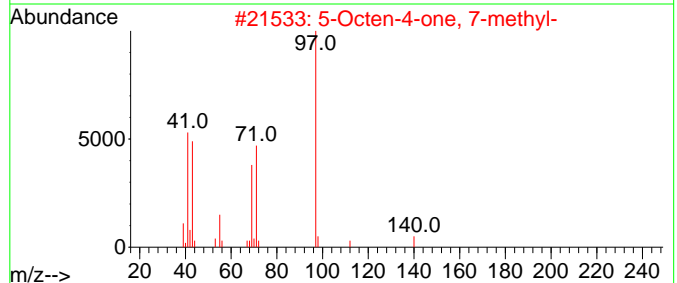
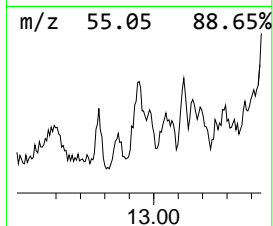
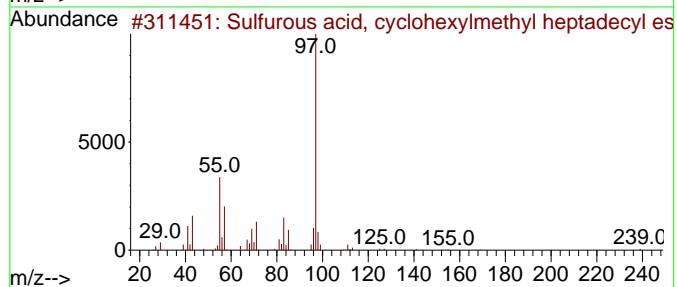
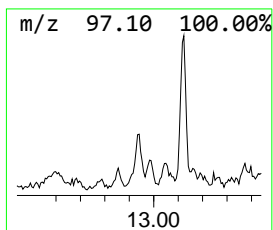
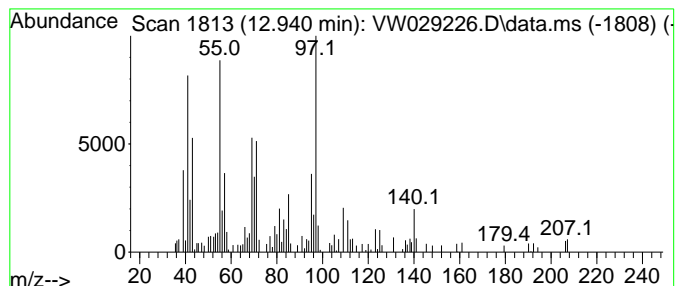
Quant Method : Z:\voasrv\HPCHEM1\MSVOA_W\Method\SFAMWLM061824SMA.M
 Quant Title : SFAM01.0

TIC Library : C:\Database\NIST20.L
 TIC Integration Parameters: LSCINT.P

 Peak Number 4 unknown-02 Concentration Rank 14

R.T.	EstConc	Area	Relative to ISTD	R.T.
12.940	2.41 ug/L	60497	1,4-Dichlorobenzene-d4	13.556

Hit#	of	5	Tentative ID	MW	MolForm	CAS#	Qual
1			Sulfurous acid, cyclohexylmethyl...	416	C24H48O3S	1000309-22-5	47
2			5-Octen-4-one, 7-methyl-	140	C9H16O	032064-78-1	43
3			m-Menthane, (1S,3S)-(+)-	140	C10H20	013837-67-7	38
4			m-Menthane, (1S,3R)-(+)-	140	C10H20	013837-66-6	38
5			3-Octanol, 2,6-dimethyl-, acetate	200	C12H24O2	123232-57-5	35



Data Path : Z:\voasrv\HPCHEM1\MSVOA_W\Data\VW061924\
 Data File : VW029226.D
 Acq On : 19 Jun 2024 20:40
 Operator : SY/MD
 Sample : P2963-03
 Misc : 4.48g/10mL/MSVOA_W/SOIL/A
 ALS Vial : 1 Sample Multiplier: 1

Instrument :
 MSVOA_W
 ClientSampleId :
 A4B48

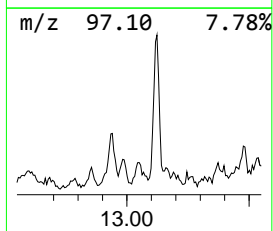
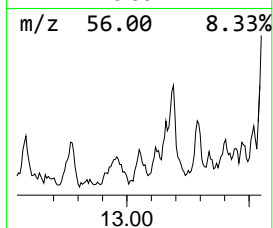
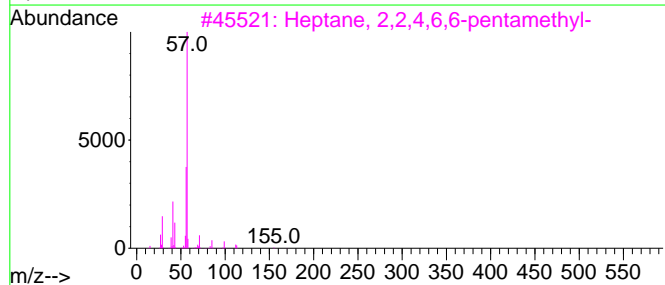
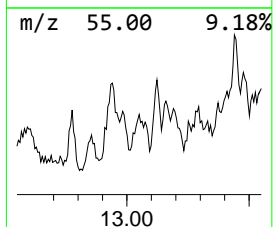
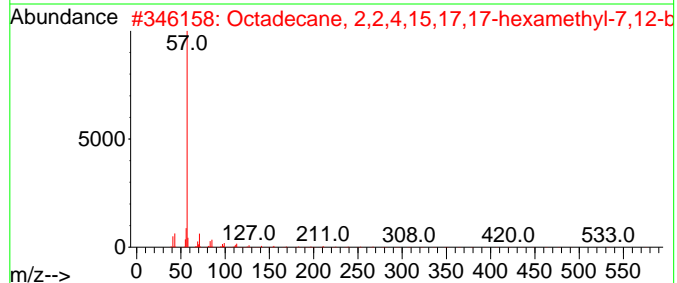
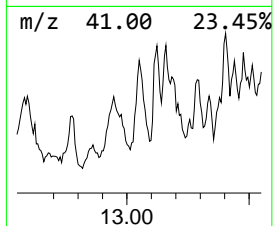
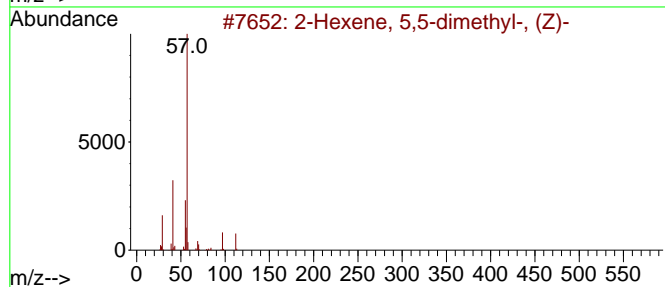
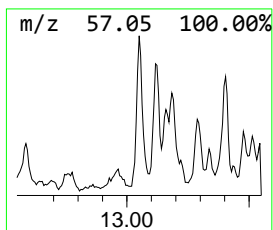
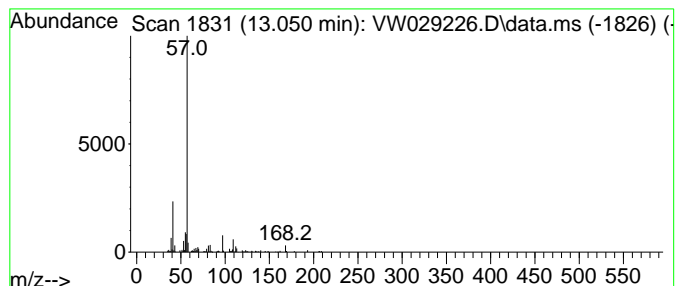
Quant Method : Z:\voasrv\HPCHEM1\MSVOA_W\Method\SFAMWLM061824SMA.M
 Quant Title : SFAM01.0

TIC Library : C:\Database\NIST20.L
 TIC Integration Parameters: LSCINT.P

 Peak Number 5 (DEL) Alkane: Straight-Chai... Concentration Rank 16

R.T.	EstConc	Area	Relative to ISTD	R.T.
13.050	2.23 ug/L	55935	1,4-Dichlorobenzene-d4	13.556

Hit# of 5	Tentative ID	MW	MolForm	CAS#	Qual
1	2-Hexene, 5,5-dimethyl-, (Z)-	112	C8H16	039761-61-0	40
2	Octadecane, 2,2,4,15,17,17-hexam...	591	C42H86	055470-97-8	38
3	Heptane, 2,2,4,6,6-pentamethyl-	170	C12H26	013475-82-6	38
4	Nonane, 2,2,3-trimethyl-	170	C12H26	055499-04-2	37
5	Heptane, 2,2,6,6-tetramethyl-4-m...	168	C12H24	000141-70-8	32



Data Path : Z:\voasrv\HPCHEM1\MSVOA_W\Data\VW061924\
 Data File : VW029226.D
 Acq On : 19 Jun 2024 20:40
 Operator : SY/MD
 Sample : P2963-03
 Misc : 4.48g/10mL/MSVOA_W/SOIL/A
 ALS Vial : 1 Sample Multiplier: 1

Instrument :
 MSVOA_W
 ClientSampleId :
 A4B48

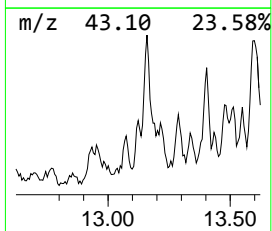
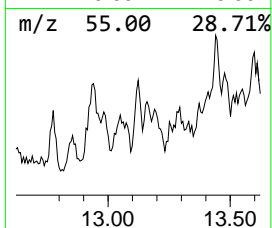
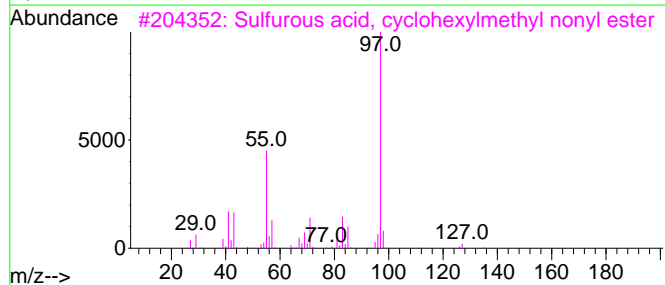
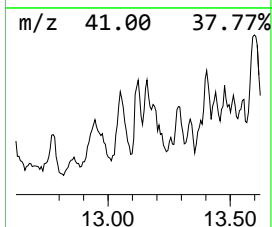
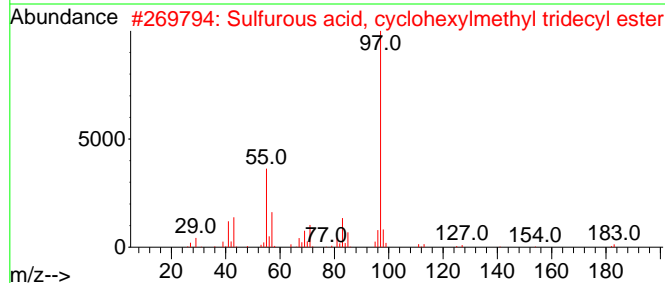
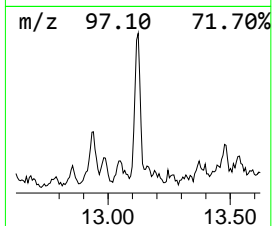
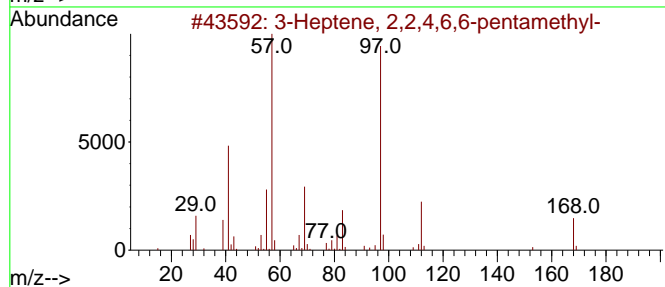
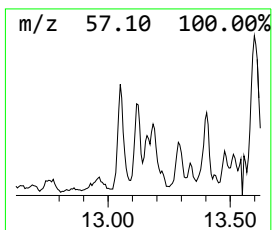
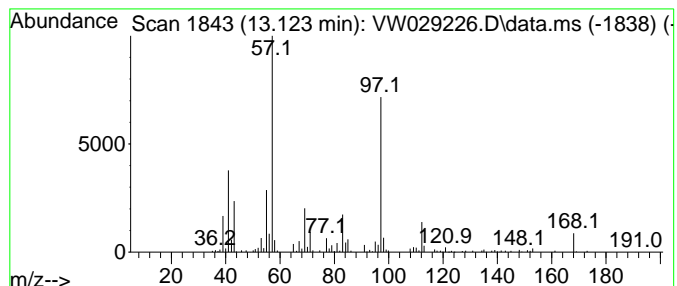
Quant Method : Z:\voasrv\HPCHEM1\MSVOA_W\Method\SFAMWLM061824SMA.M
 Quant Title : SFAM01.0

TIC Library : C:\Database\NIST20.L
 TIC Integration Parameters: LSCINT.P

 Peak Number 6 (DEL) Alkane: Straight-Chai... Concentration Rank 15

R.T.	EstConc	Area	Relative to ISTD	R.T.
13.123	2.38 ug/L	59773	1,4-Dichlorobenzene-d4	13.556

Hit#	of 5	Tentative ID	MW	MolForm	CAS#	Qual
1		3-Heptene, 2,2,4,6,6-pentamethyl-	168	C12H24	000123-48-8	58
2		Sulfurous acid, cyclohexylmethyl...	360	C20H40O3S	1000309-22-1	53
3		Sulfurous acid, cyclohexylmethyl...	304	C16H32O3S	1000309-21-8	47
4		Cyclohexane, 1,3-dimethyl-	112	C8H16	000591-21-9	46
5		2-Pentene, 2,3,4-trimethyl-	112	C8H16	000565-77-5	46



Data Path : Z:\voasrv\HPCHEM1\MSVOA_W\Data\VW061924\
 Data File : VW029226.D
 Acq On : 19 Jun 2024 20:40
 Operator : SY/MD
 Sample : P2963-03
 Misc : 4.48g/10mL/MSVOA_W/SOIL/A
 ALS Vial : 1 Sample Multiplier: 1

Instrument :
 MSVOA_W
 ClientSampleId :
 A4B48

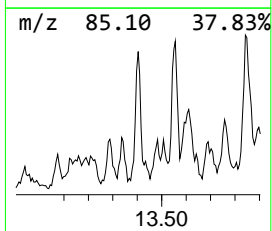
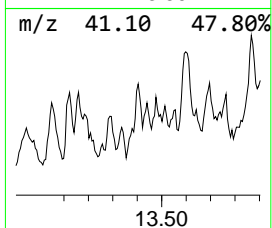
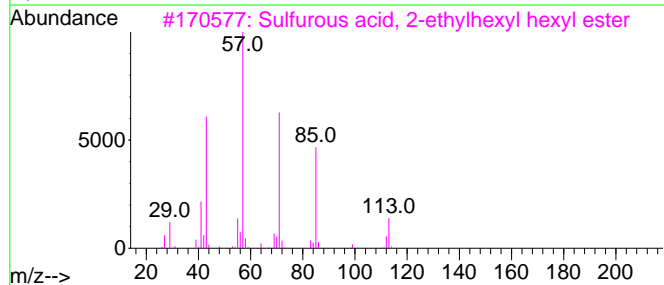
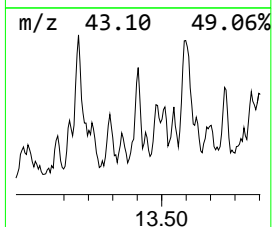
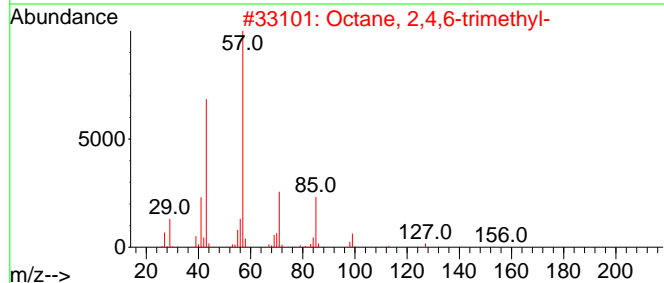
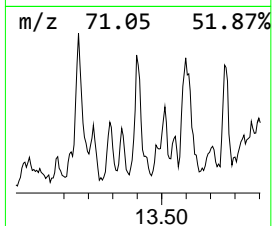
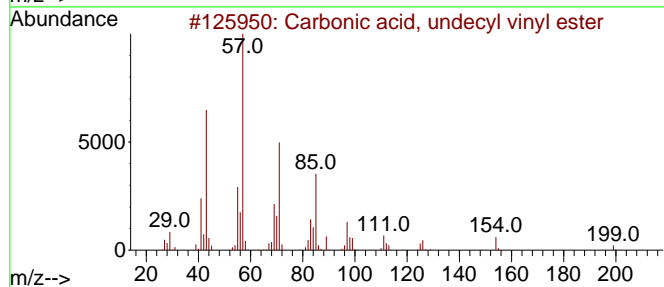
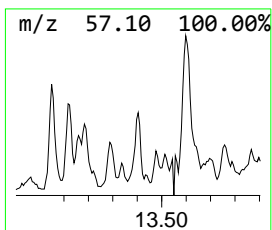
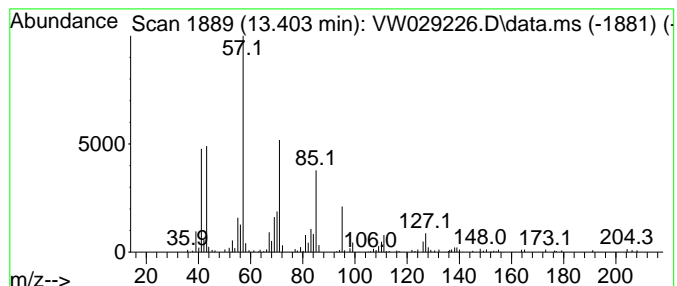
Quant Method : Z:\voasrv\HPCHEM1\MSVOA_W\Method\SFAMWLM061824SMA.M
 Quant Title : SFAM01.0

TIC Library : C:\Database\NIST20.L
 TIC Integration Parameters: LSCINT.P

 Peak Number 7 Carbonic acid, undecyl viny... Concentration Rank 10

R.T.	EstConc	Area	Relative to ISTD	R.T.
13.403	3.55 ug/L	89183	1,4-Dichlorobenzene-d4	13.556

Hit#	of 5	Tentative ID	MW	MolForm	CAS#	Qual
1		Carbonic acid, undecyl vinyl ester	242	C14H26O3	1000382-54-9	59
2		Octane, 2,4,6-trimethyl-	156	C11H24	062016-37-9	50
3		Sulfurous acid, 2-ethylhexyl hex...	278	C14H30O3S	1000309-20-2	50
4		Undecane, 3,8-dimethyl-	184	C13H28	017301-30-3	47
5		Sulfurous acid, 2-ethylhexyl iso...	278	C14H30O3S	1000309-19-0	47



Data Path : Z:\voasrv\HPCHEM1\MSVOA_W\Data\VW061924\
 Data File : VW029226.D
 Acq On : 19 Jun 2024 20:40
 Operator : SY/MD
 Sample : P2963-03
 Misc : 4.48g/10mL/MSVOA_W/SOIL/A
 ALS Vial : 1 Sample Multiplier: 1

Instrument :
 MSVOA_W
 ClientSampleId :
 A4B48

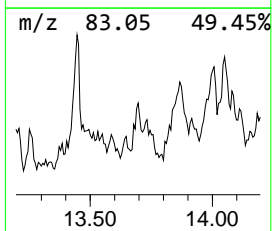
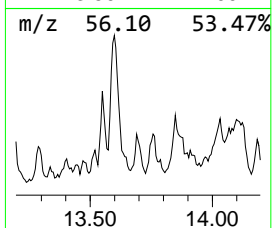
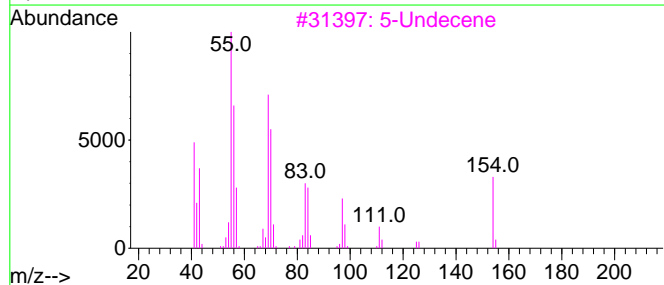
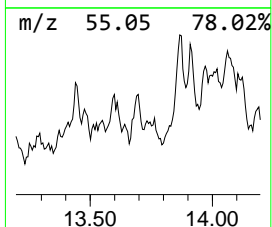
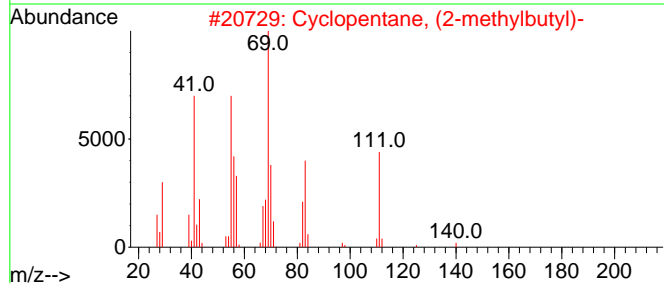
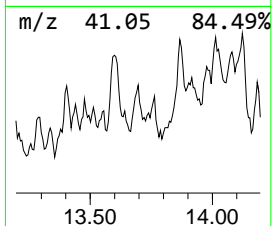
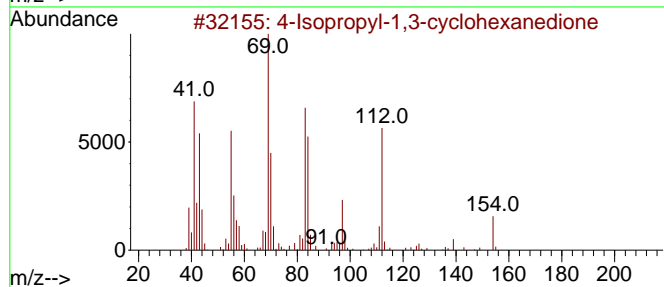
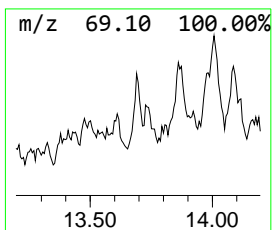
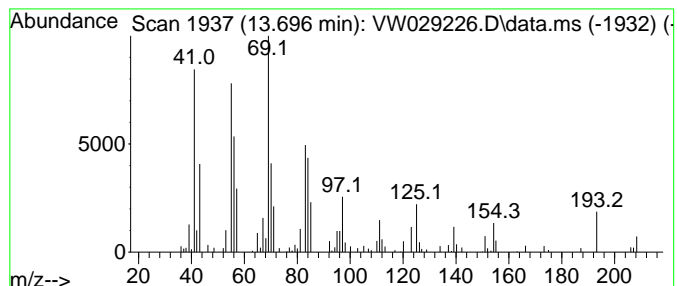
Quant Method : Z:\voasrv\HPCHEM1\MSVOA_W\Method\SFAMWLM061824SMA.M
 Quant Title : SFAM01.0

TIC Library : C:\Database\NIST20.L
 TIC Integration Parameters: LSCINT.P

 Peak Number 8 4-Isopropyl-1,3-cyclohexane... Concentration Rank 18

R.T.	EstConc	Area	Relative to ISTD	R.T.
13.696	1.62 ug/L	40711	1,4-Dichlorobenzene-d4	13.556

Hit#	of 5	Tentative ID	MW	MolForm	CAS#	Qual
1		4-Isopropyl-1,3-cyclohexanedione	154	C9H14O2	062831-62-3	68
2		Cyclopentane, (2-methylbutyl)-	140	C10H20	053366-38-4	52
3		5-Undecene	154	C11H22	004941-53-1	50
4		Cyclopropane, 1,2-dimethyl-1-pen...	140	C10H20	062238-04-4	49
5		Dichloroacetic acid, 6-ethyl-3-o...	268	C12H22Cl2O2	1000282-56-6	47



Data Path : Z:\voasrv\HPCHEM1\MSVOA_W\Data\VW061924\
 Data File : VW029226.D
 Acq On : 19 Jun 2024 20:40
 Operator : SY/MD
 Sample : P2963-03
 Misc : 4.48g/10mL/MSVOA_W/SOIL/A
 ALS Vial : 1 Sample Multiplier: 1

Instrument :
 MSVOA_W
 ClientSampleId :
 A4B48

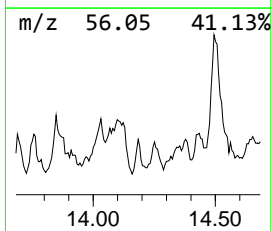
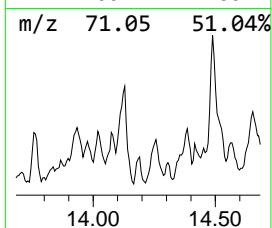
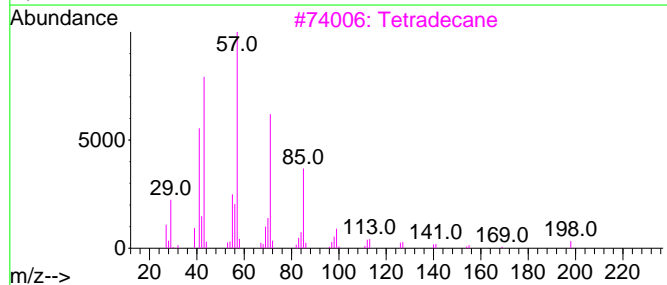
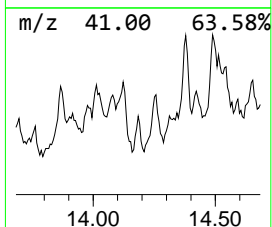
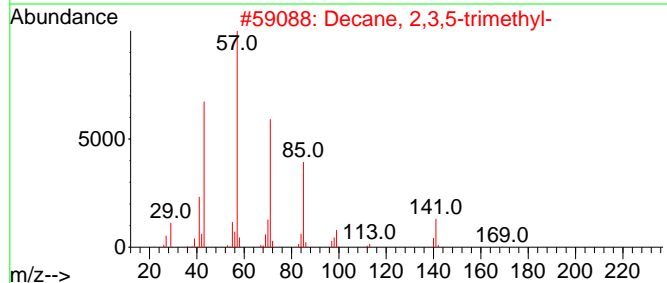
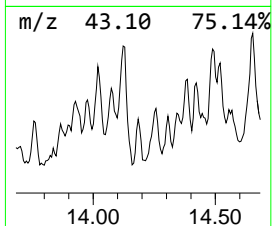
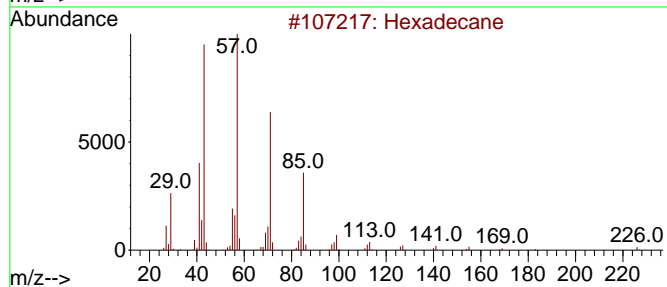
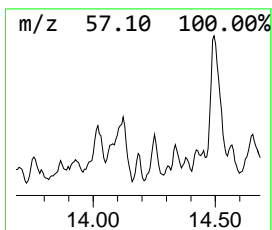
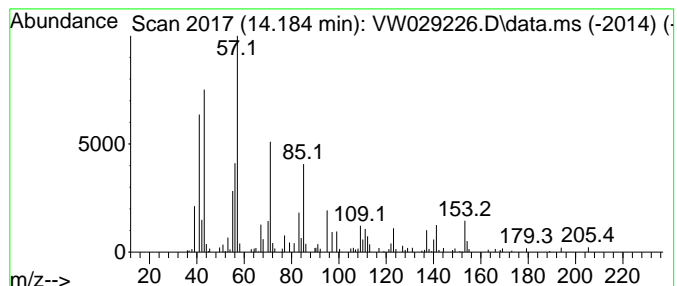
Quant Method : Z:\voasrv\HPCHEM1\MSVOA_W\Method\SFAMWLM061824SMA.M
 Quant Title : SFAM01.0

TIC Library : C:\Database\NIST20.L
 TIC Integration Parameters: LSCINT.P

 Peak Number 9 (DEL) Alkane: Straight-Chai... Concentration Rank 20

R.T.	EstConc	Area	Relative to ISTD	R.T.
14.184	1.43 ug/L	35931	1,4-Dichlorobenzene-d4	13.556

Hit#	of 5	Tentative ID	MW	MolForm	CAS#	Qual
1		Hexadecane	226	C16H34	000544-76-3	38
2		Decane, 2,3,5-trimethyl-	184	C13H28	062238-11-3	38
3		Tetradecane	198	C14H30	000629-59-4	38
4		Tridecane	184	C13H28	000629-50-5	38
5		Tridecane	184	C13H28	000629-50-5	38



Data Path : Z:\voasrv\HPCHEM1\MSVOA_W\Data\VW061924\
 Data File : VW029226.D
 Acq On : 19 Jun 2024 20:40
 Operator : SY/MD
 Sample : P2963-03
 Misc : 4.48g/10mL/MSVOA_W/SOIL/A
 ALS Vial : 1 Sample Multiplier: 1

Instrument :
 MSVOA_W
 ClientSampleId :
 A4B48

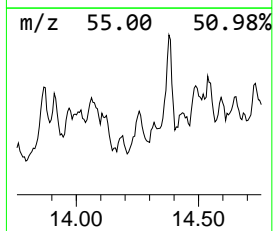
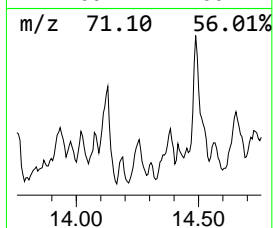
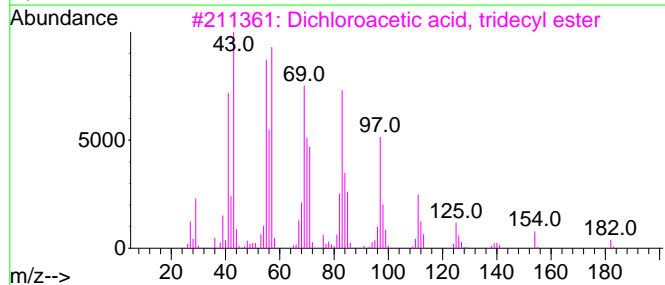
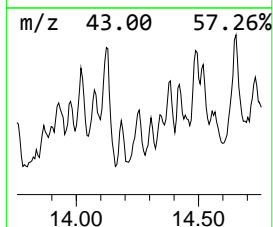
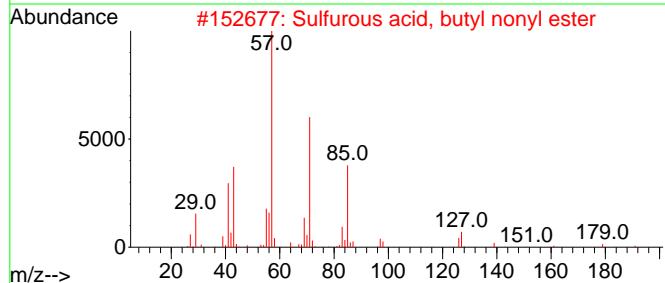
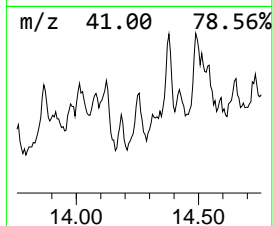
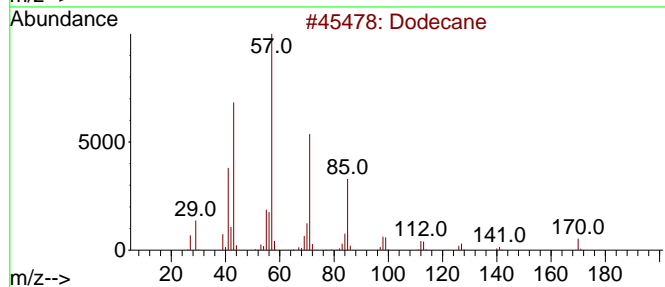
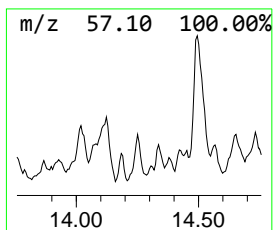
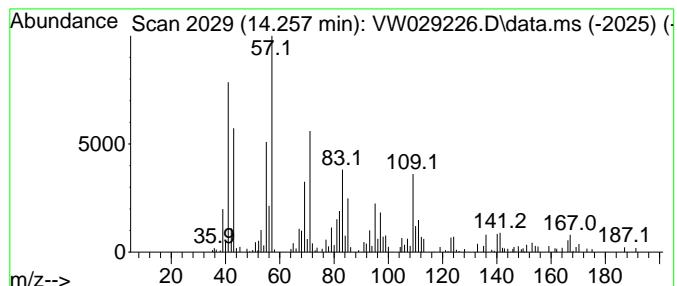
Quant Method : Z:\voasrv\HPCHEM1\MSVOA_W\Method\SFAMWLM061824SMA.M
 Quant Title : SFAM01.0

TIC Library : C:\Database\NIST20.L
 TIC Integration Parameters: LSCINT.P

 Peak Number 10 (DEL) Alkane: Straight-Chai... Concentration Rank 13

R.T.	EstConc	Area	Relative to ISTD	R.T.
14.257	2.65 ug/L	66618	1,4-Dichlorobenzene-d4	13.556

Hit#	of	5	Tentative ID	MW	MolForm	CAS#	Qual
1			Dodecane	170	C12H26	000112-40-3	38
2			Sulfurous acid, butyl nonyl ester	264	C13H28O3S	1000309-17-6	35
3			Dichloroacetic acid, tridecyl ester	310	C15H28Cl2O2	1000280-48-3	30
4			4-Decanone, 9-methyl-	170	C11H22O	029379-11-1	30
5			Decane, 5-propyl-	184	C13H28	017312-62-8	27



Data Path : Z:\voasrv\HPCHEM1\MSVOA_W\Data\VW061924\
 Data File : VW029226.D
 Acq On : 19 Jun 2024 20:40
 Operator : SY/MD
 Sample : P2963-03
 Misc : 4.48g/10mL/MSVOA_W/SOIL/A
 ALS Vial : 1 Sample Multiplier: 1

Instrument :
 MSVOA_W
 ClientSampleId :
 A4B48

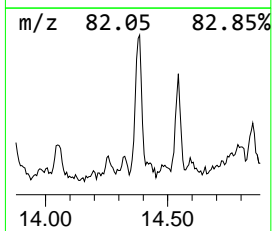
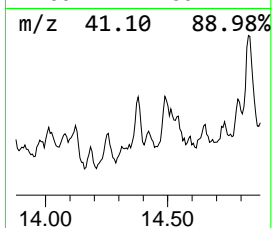
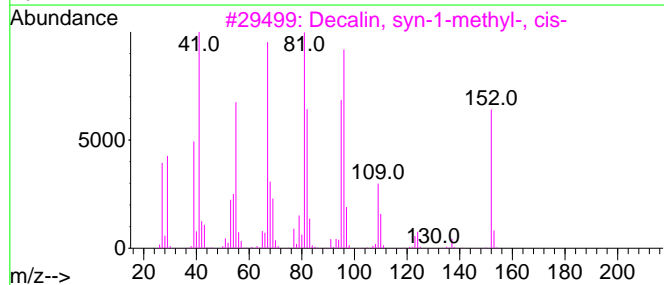
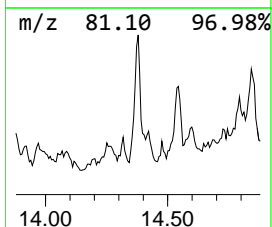
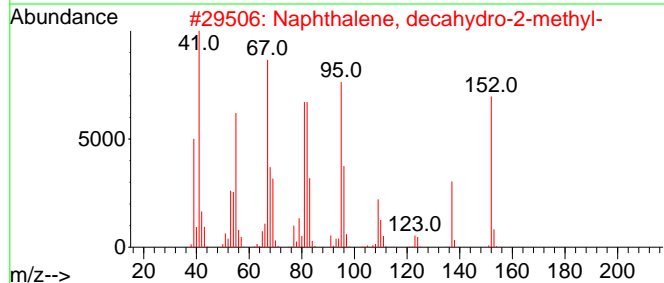
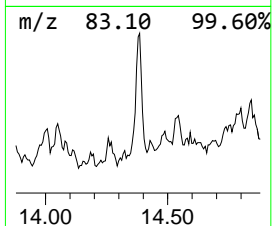
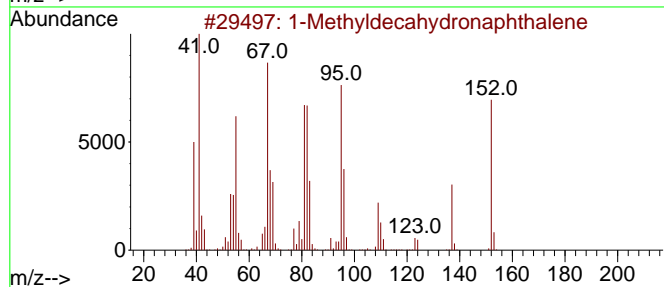
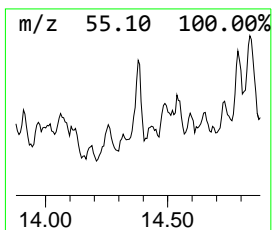
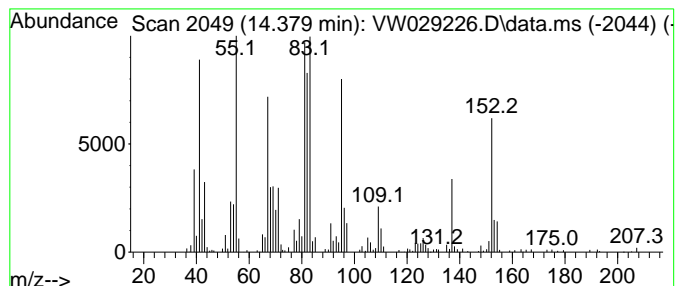
Quant Method : Z:\voasrv\HPCHEM1\MSVOA_W\Method\SFAMWLM061824SMA.M
 Quant Title : SFAM01.0

TIC Library : C:\Database\NIST20.L
 TIC Integration Parameters: LSCINT.P

 Peak Number 11 1-Methyldecahydronaphthalene Concentration Rank 8

R.T.	EstConc	Area	Relative to ISTD	R.T.
14.379	5.12 ug/L	128693	1,4-Dichlorobenzene-d4	13.556

Hit#	of	5	Tentative ID	MW	MolForm	CAS#	Qual
1			1-Methyldecahydronaphthalene	152	C11H20	002958-75-0	78
2			Naphthalene, decahydro-2-methyl-	152	C11H20	002958-76-1	78
3			Decalin, syn-1-methyl-, cis-	152	C11H20	1000158-89-1	70
4			Dodeca-1,6-dien-12-ol, 6,10-dime...	210	C14H26O	1000156-13-8	58
5			Naphthalene, decahydro-2-methyl-	152	C11H20	002958-76-1	53



Data Path : Z:\voasrv\HPCHEM1\MSVOA_W\Data\VW061924\
 Data File : VW029226.D
 Acq On : 19 Jun 2024 20:40
 Operator : SY/MD
 Sample : P2963-03
 Misc : 4.48g/10mL/MSVOA_W/SOIL/A
 ALS Vial : 1 Sample Multiplier: 1

Instrument :
 MSVOA_W
 ClientSampleId :
 A4B48

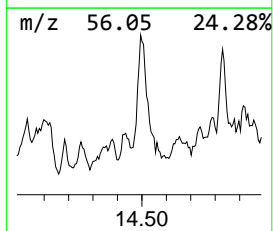
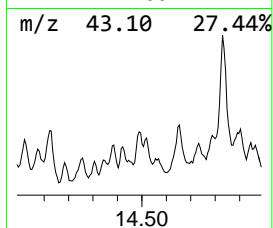
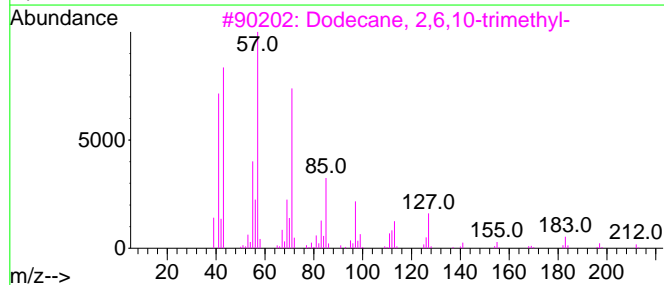
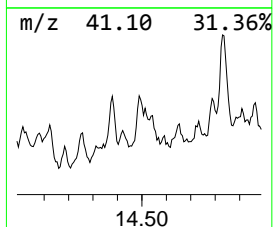
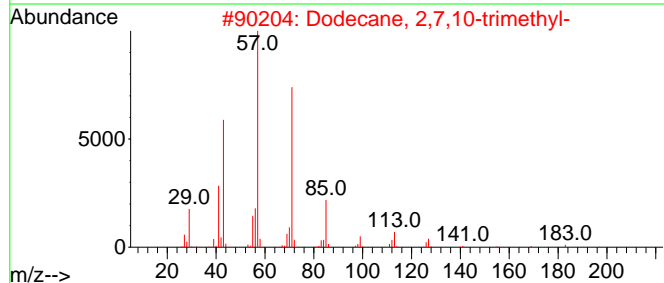
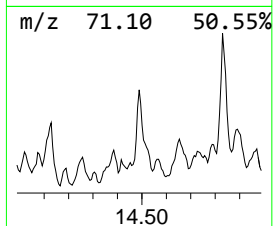
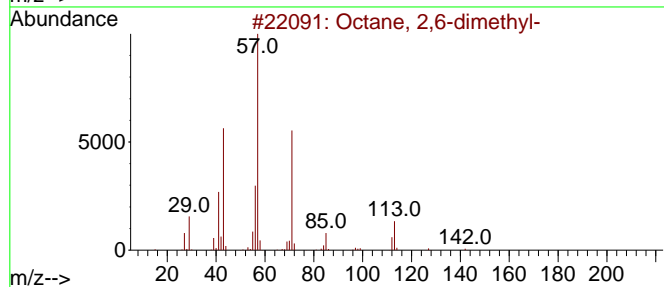
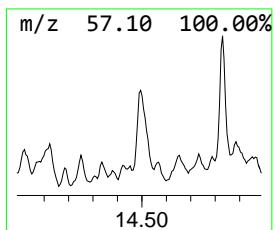
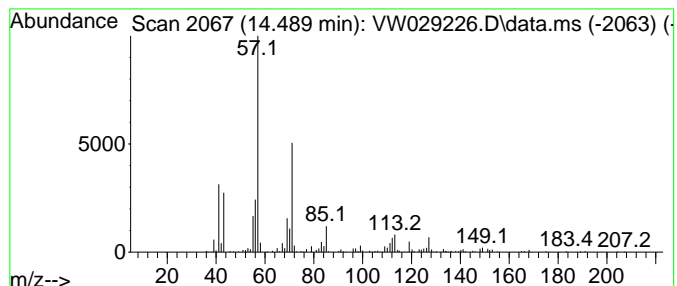
Quant Method : Z:\voasrv\HPCHEM1\MSVOA_W\Method\SFAMWLM061824SMA.M
 Quant Title : SFAM01.0

TIC Library : C:\Database\NIST20.L
 TIC Integration Parameters: LSCINT.P

 Peak Number 12 (DEL) Alkane: Straight-Chai... Concentration Rank 4

R.T.	EstConc	Area	Relative to ISTD	R.T.
14.489	7.39 ug/L	185592	1,4-Dichlorobenzene-d4	13.556

Hit#	of 5	Tentative ID	MW	MolForm	CAS#	Qual
1		Octane, 2,6-dimethyl-	142	C10H22	002051-30-1	83
2		Dodecane, 2,7,10-trimethyl-	212	C15H32	074645-98-0	78
3		Dodecane, 2,6,10-trimethyl-	212	C15H32	003891-98-3	72
4		Octane, 2,6-dimethyl-	142	C10H22	002051-30-1	72
5		Octane, 3,6-dimethyl-	142	C10H22	015869-94-0	64



Data Path : Z:\voasrv\HPCHEM1\MSVOA_W\Data\VW061924\
 Data File : VW029226.D
 Acq On : 19 Jun 2024 20:40
 Operator : SY/MD
 Sample : P2963-03
 Misc : 4.48g/10mL/MSVOA_W/SOIL/A
 ALS Vial : 1 Sample Multiplier: 1

Instrument :
 MSVOA_W
 ClientSampleId :
 A4B48

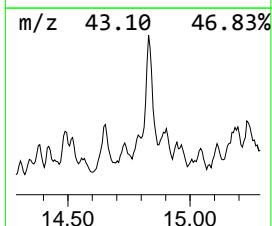
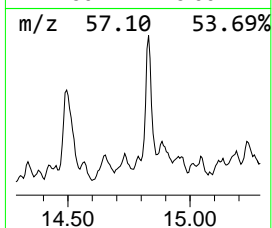
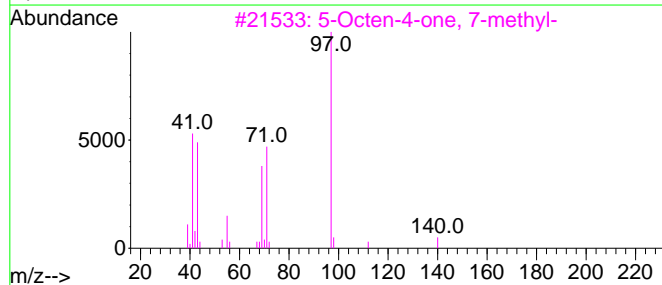
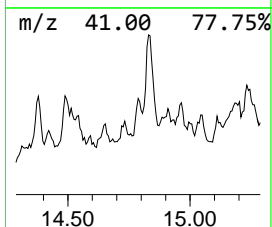
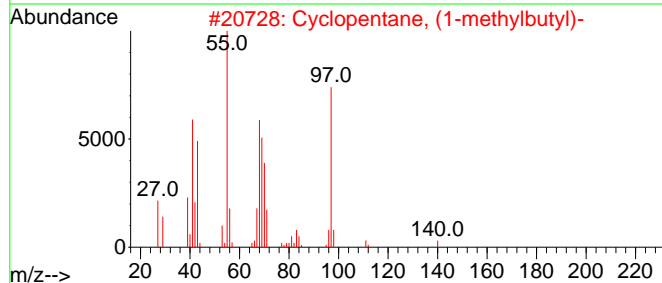
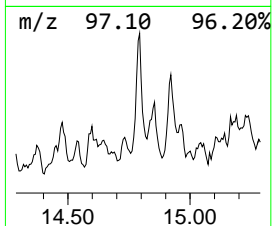
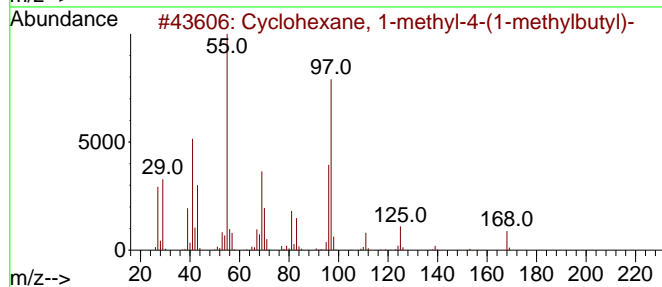
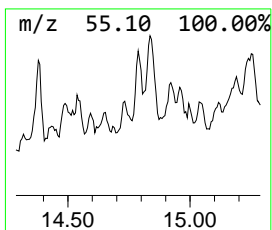
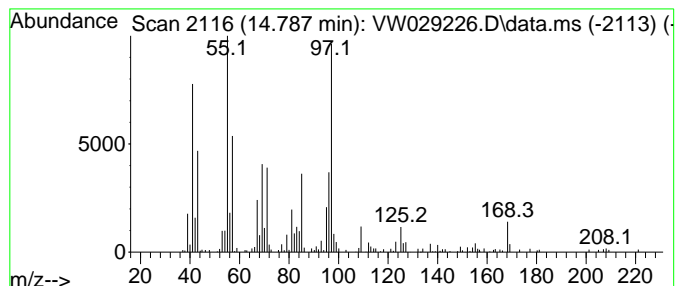
Quant Method : Z:\voasrv\HPCHEM1\MSVOA_W\Method\SFAMWLM061824SMA.M
 Quant Title : SFAM01.0

TIC Library : C:\Database\NIST20.L
 TIC Integration Parameters: LSCINT.P

 Peak Number 13 (DEL) Alkane: Cyclic14.787 Concentration Rank 12

R.T.	EstConc	Area	Relative to ISTD	R.T.
14.787	2.97 ug/L	74599	1,4-Dichlorobenzene-d4	13.556

Hit#	of	5	Tentative ID	MW	MolForm	CAS#	Qual
1			Cyclohexane, 1-methyl-4-(1-methylbutyl)-	168	C12H24	054411-00-6	46
2			Cyclopentane, (1-methylbutyl)-	140	C10H20	004737-43-3	43
3			5-Octen-4-one, 7-methyl-	140	C9H16O	032064-78-1	38
4			Cyclohexane, 1-methyl-2-pentyl-	168	C12H24	054411-01-7	38
5			Cyclohexane, 1,1-dimethyl-	112	C8H16	000590-66-9	38



Data Path : Z:\voasrv\HPCHEM1\MSVOA_W\Data\VW061924\
 Data File : VW029226.D
 Acq On : 19 Jun 2024 20:40
 Operator : SY/MD
 Sample : P2963-03
 Misc : 4.48g/10mL/MSVOA_W/SOIL/A
 ALS Vial : 1 Sample Multiplier: 1

Instrument :
 MSVOA_W
 ClientSampleId :
 A4B48

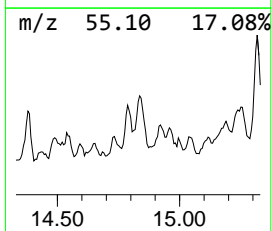
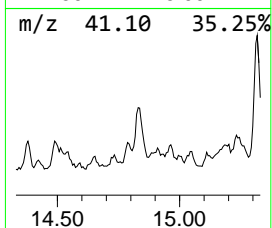
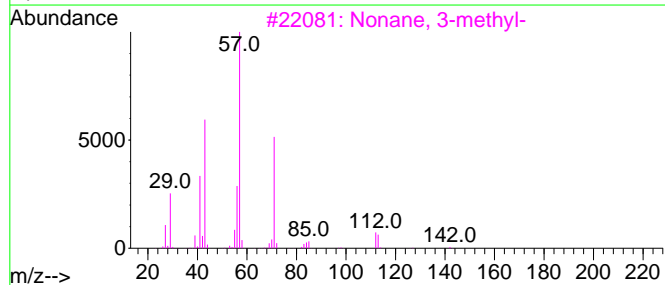
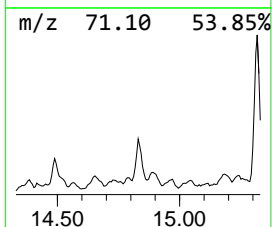
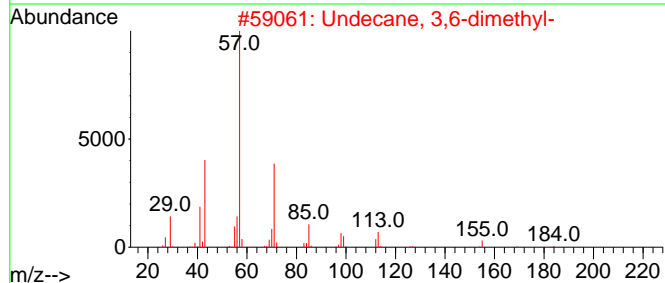
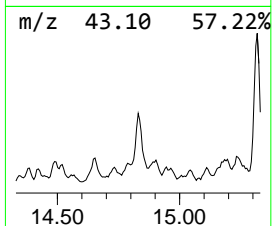
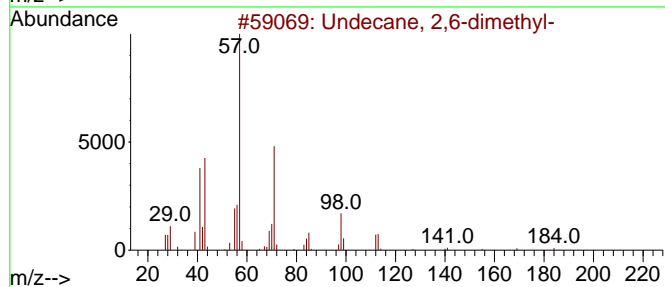
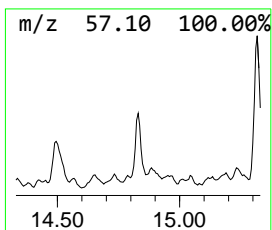
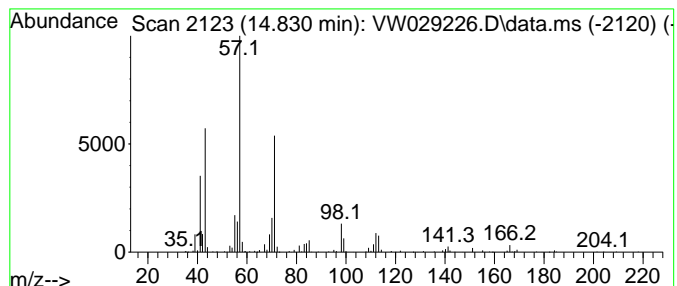
Quant Method : Z:\voasrv\HPCHEM1\MSVOA_W\Method\SFAMWLM061824SMA.M
 Quant Title : SFAM01.0

TIC Library : C:\Database\NIST20.L
 TIC Integration Parameters: LSCINT.P

 Peak Number 14 (DEL) Alkane: Straight-Chai... Concentration Rank 3

R.T.	EstConc	Area	Relative to ISTD	R.T.
14.830	9.64 ug/L	242111	1,4-Dichlorobenzene-d4	13.556

Hit#	of 5	Tentative ID	MW	MolForm	CAS#	Qual
1		Undecane, 2,6-dimethyl-	184	C13H28	017301-23-4	92
2		Undecane, 3,6-dimethyl-	184	C13H28	017301-28-9	87
3		Nonane, 3-methyl-	142	C10H22	005911-04-6	76
4		Nonane, 3-methyl-	142	C10H22	005911-04-6	74
5		Undecane, 2,6-dimethyl-	184	C13H28	017301-23-4	70



Data Path : Z:\voasrv\HPCHEM1\MSVOA_W\Data\VW061924\
 Data File : VW029226.D
 Acq On : 19 Jun 2024 20:40
 Operator : SY/MD
 Sample : P2963-03
 Misc : 4.48g/10mL/MSVOA_W/SOIL/A
 ALS Vial : 1 Sample Multiplier: 1

Instrument :
 MSVOA_W
 ClientSampleId :
 A4B48

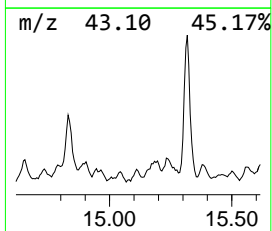
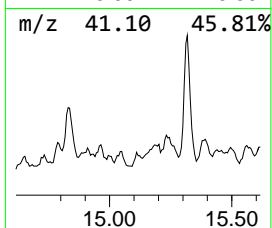
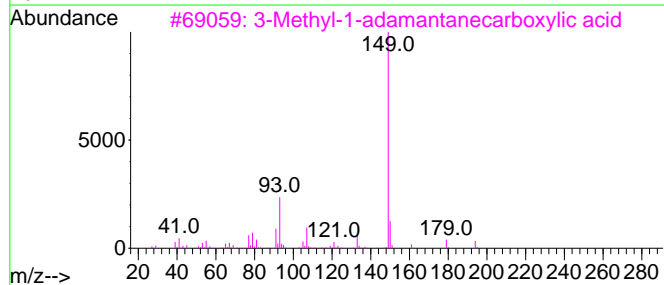
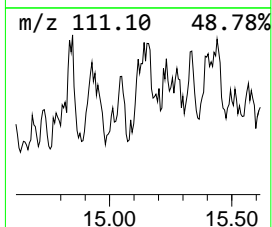
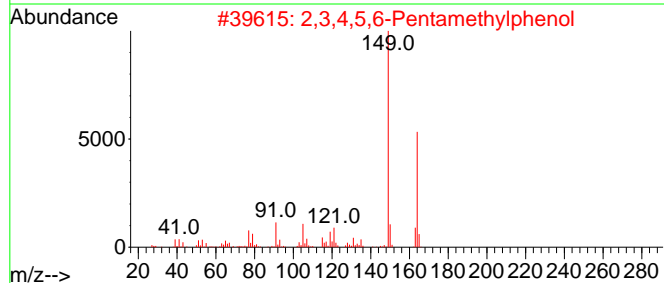
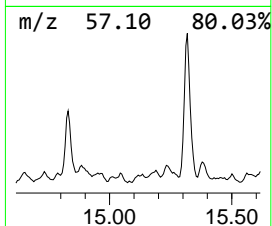
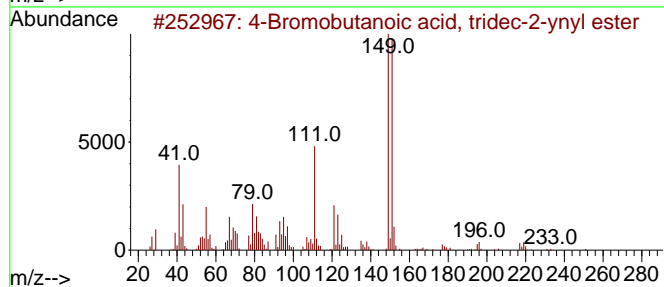
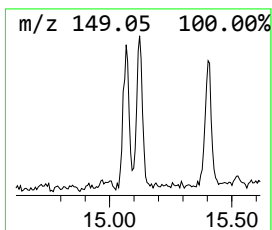
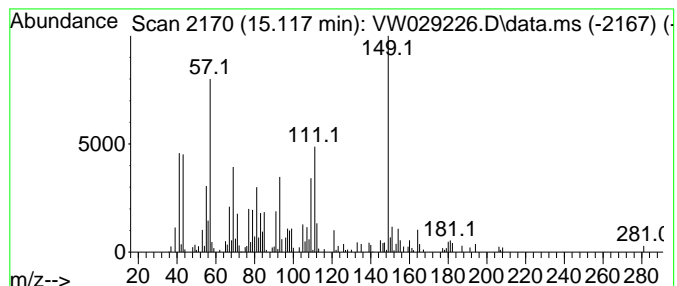
Quant Method : Z:\voasrv\HPCHEM1\MSVOA_W\Method\SFAMWLM061824SMA.M
 Quant Title : SFAM01.0

TIC Library : C:\Database\NIST20.L
 TIC Integration Parameters: LSCINT.P

 Peak Number 15 4-Bromobutanoic acid, tridec... Concentration Rank 17

R.T.	EstConc	Area	Relative to ISTD	R.T.
15.117	1.66 ug/L	41802	1,4-Dichlorobenzene-d4	13.556

Hit#	of	5	Tentative ID	MW	MolForm	CAS#	Qual
1			4-Bromobutanoic acid, tridec-2-y...	344	C17H29BrO2	1010299-28-4	50
2			2,3,4,5,6-Pentamethylphenol	164	C11H16O	002819-86-5	38
3			3-Methyl-1-adamantanecarboxylic ...	194	C12H18O2	1000504-38-9	35
4			Benzothiazole, 2-methyl-	149	C8H7NS	000120-75-2	27
5			Phthalic acid, 7-bromoheptyl hep...	440	C22H33BrO4	1000415-52-1	27



Data Path : Z:\voasrv\HPCHEM1\MSVOA_W\Data\VW061924\
 Data File : VW029226.D
 Acq On : 19 Jun 2024 20:40
 Operator : SY/MD
 Sample : P2963-03
 Misc : 4.48g/10mL/MSVOA_W/SOIL/A
 ALS Vial : 1 Sample Multiplier: 1

Instrument :
 MSVOA_W
 ClientSampleId :
 A4B48

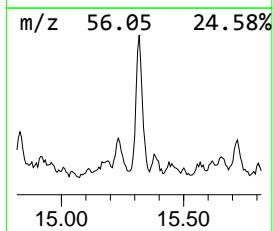
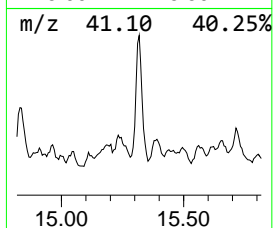
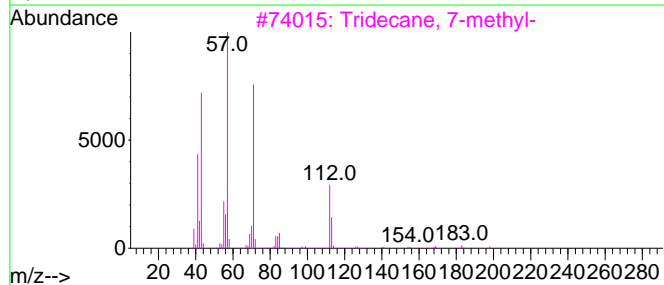
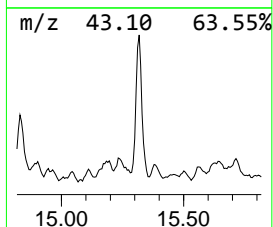
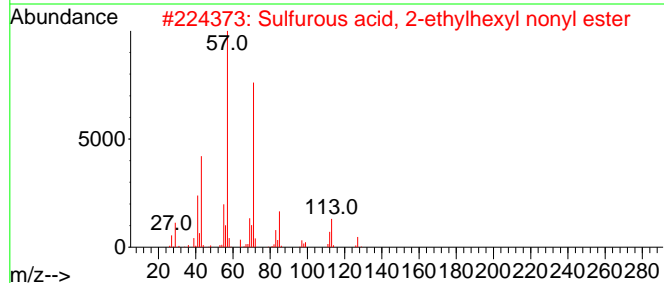
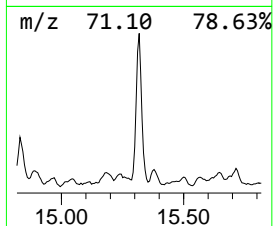
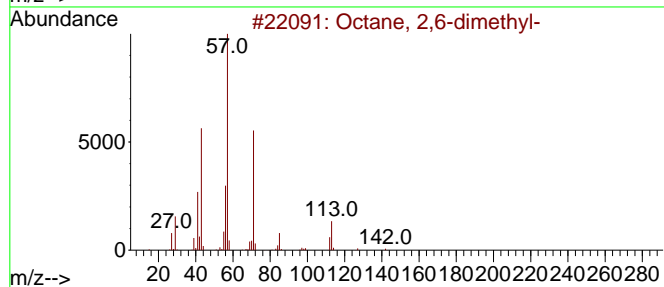
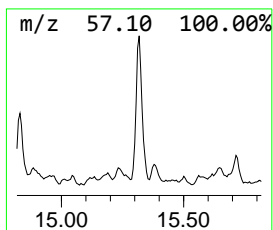
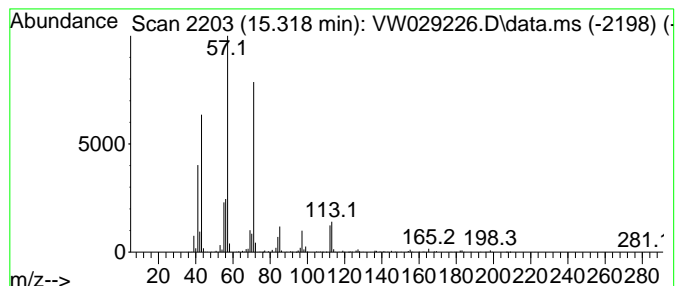
Quant Method : Z:\voasrv\HPCHEM1\MSVOA_W\Method\SFAMWLM061824SMA.M
 Quant Title : SFAM01.0

TIC Library : C:\Database\NIST20.L
 TIC Integration Parameters: LSCINT.P

 Peak Number 16 (DEL) Alkane: Straight-Chai... Concentration Rank 1

R.T.	EstConc	Area	Relative to ISTD	R.T.
15.318	20.20 ug/L	507492	1,4-Dichlorobenzene-d4	13.556

Hit#	of 5	Tentative ID	MW	MolForm	CAS#	Qual
1		Octane, 2,6-dimethyl-	142	C10H22	002051-30-1	83
2		Sulfurous acid, 2-ethylhexyl non...	320	C17H36O3S	1010309-19-2	80
3		Tridecane, 7-methyl-	198	C14H30	026730-14-3	74
4		Dodecane, 4,6-dimethyl-	198	C14H30	061141-72-8	64
5		Oxalic acid, bis(2-ethylhexyl) e...	314	C18H34O4	1000309-39-0	64



Data Path : Z:\voasrv\HPCHEM1\MSVOA_W\Data\VW061924\
 Data File : VW029226.D
 Acq On : 19 Jun 2024 20:40
 Operator : SY/MD
 Sample : P2963-03
 Misc : 4.48g/10mL/MSVOA_W/SOIL/A
 ALS Vial : 1 Sample Multiplier: 1

Instrument :
 MSVOA_W
 ClientSampleId :
 A4B48

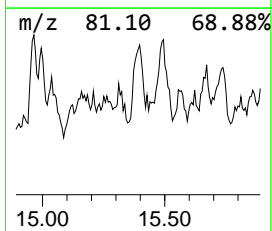
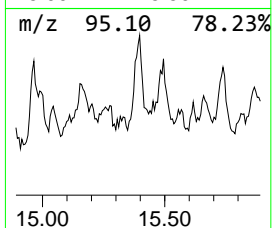
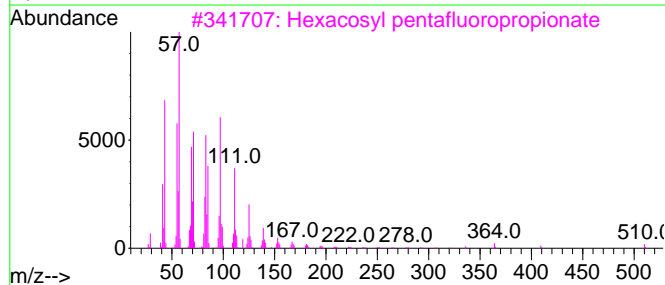
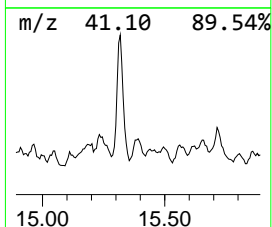
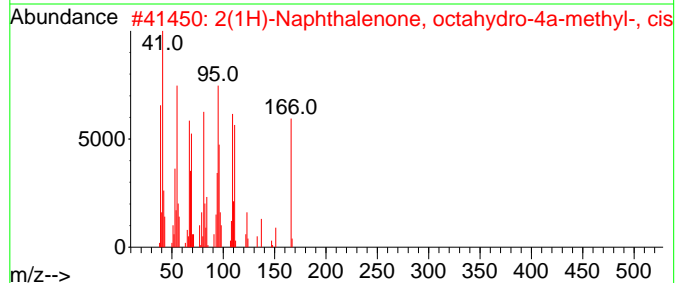
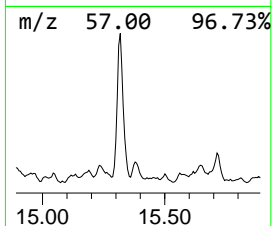
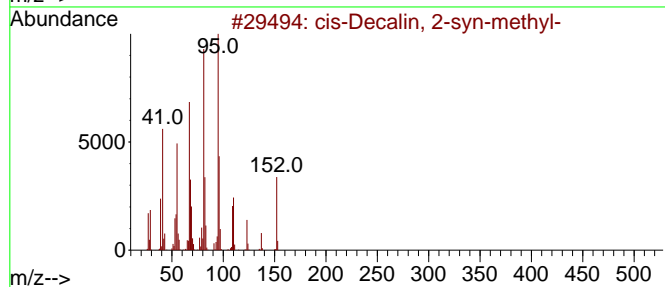
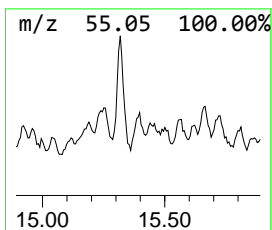
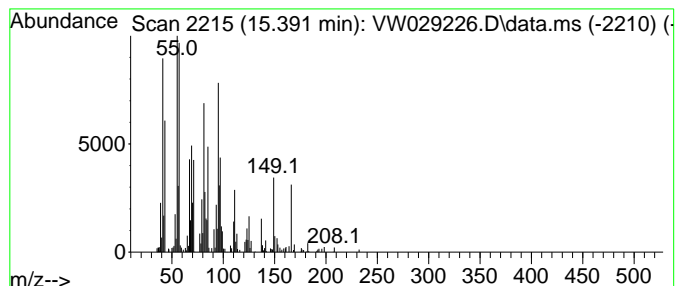
Quant Method : Z:\voasrv\HPCHEM1\MSVOA_W\Method\SFAMWLM061824SMA.M
 Quant Title : SFAM01.0

TIC Library : C:\Database\NIST20.L
 TIC Integration Parameters: LSCINT.P

 Peak Number 17 unknown-03 Concentration Rank 7

R.T.	EstConc	Area	Relative to ISTD	R.T.
15.391	5.26 ug/L	132113	1,4-Dichlorobenzene-d4	13.556

Hit#	of 5	Tentative ID	MW	MolForm	CAS#	Qual
1		cis-Decalin, 2-syn-methyl-	152	C11H20	1000155-85-6	41
2		2(1H)-Naphthalenone, octahydro-4...	166	C11H18O	000938-06-7	41
3		Hexacosyl pentafluoropropionate	528	C29H53F5O2	1000351-81-2	38
4		Tetracosyl heptafluorobutyrate	550	C28H49F7O2	1000351-83-7	38
5		Hexacosyl heptafluorobutyrate	578	C30H53F7O2	1000351-83-3	38



Data Path : Z:\voasrv\HPCHEM1\MSVOA_W\Data\VW061924\
 Data File : VW029226.D
 Acq On : 19 Jun 2024 20:40
 Operator : SY/MD
 Sample : P2963-03
 Misc : 4.48g/10mL/MSVOA_W/SOIL/A
 ALS Vial : 1 Sample Multiplier: 1

Instrument :
 MSVOA_W
 ClientSampleId :
 A4B48

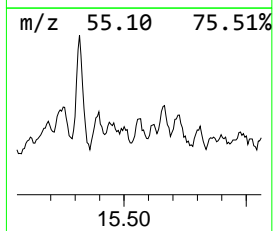
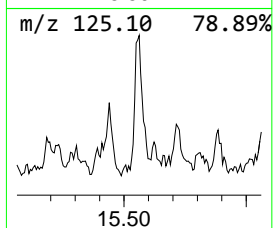
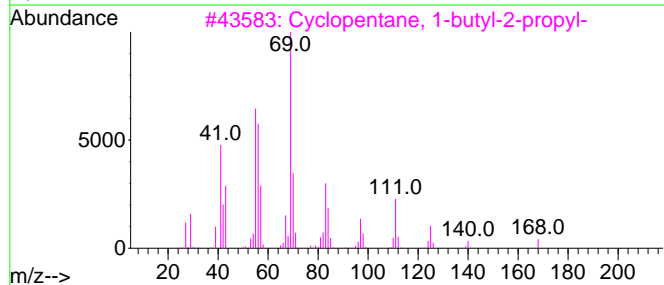
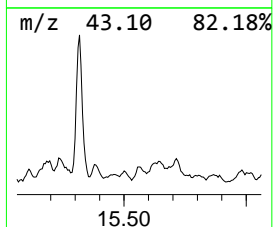
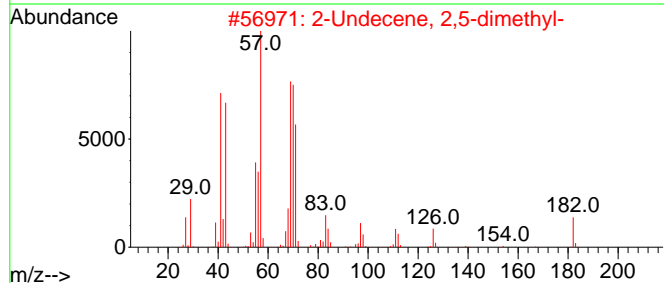
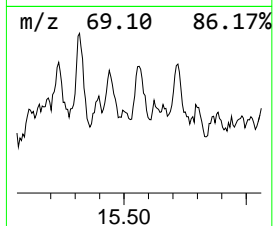
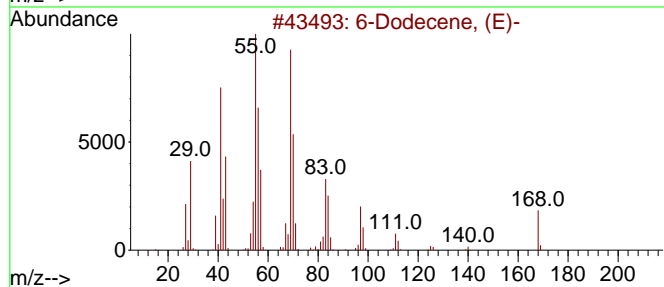
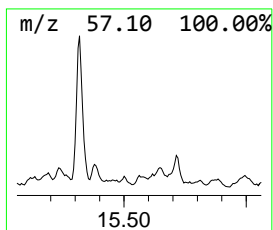
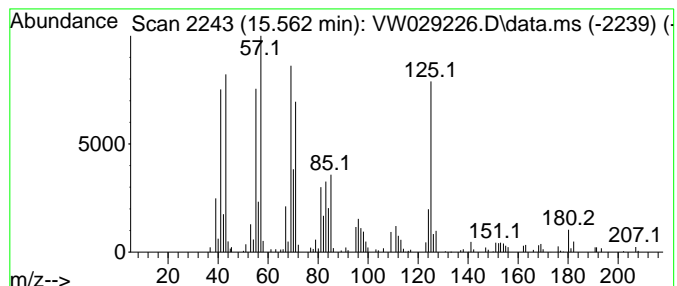
Quant Method : Z:\voasrv\HPCHEM1\MSVOA_W\Method\SFAMWLM061824SMA.M
 Quant Title : SFAM01.0

TIC Library : C:\Database\NIST20.L
 TIC Integration Parameters: LSCINT.P

 Peak Number 18 (DEL) Alkane: Straight-Chai... Concentration Rank 11

R.T.	EstConc	Area	Relative to ISTD	R.T.
15.562	3.25 ug/L	81752	1,4-Dichlorobenzene-d4	13.556

Hit#	of 5	Tentative ID	MW	MolForm	CAS#	Qual
1		6-Dodecene, (E)-	168	C12H24	007206-17-9	38
2		2-Undecene, 2,5-dimethyl-	182	C13H26	049622-16-4	38
3		Cyclopentane, 1-butyl-2-propyl-	168	C12H24	062199-50-2	38
4		6-Dodecene, (Z)-	168	C12H24	007206-29-3	38
5		6-Tridecene, (E)-	182	C13H26	006434-76-0	38



Data Path : Z:\voasrv\HPCHEM1\MSVOA_W\Data\VW061924\
 Data File : VW029226.D
 Acq On : 19 Jun 2024 20:40
 Operator : SY/MD
 Sample : P2963-03
 Misc : 4.48g/10mL/MSVOA_W/SOIL/A
 ALS Vial : 1 Sample Multiplier: 1

Instrument :
 MSVOA_W
 ClientSampleId :
 A4B48

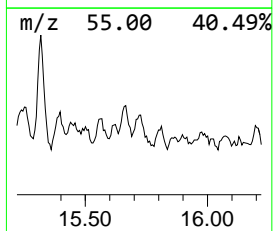
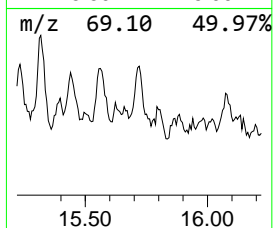
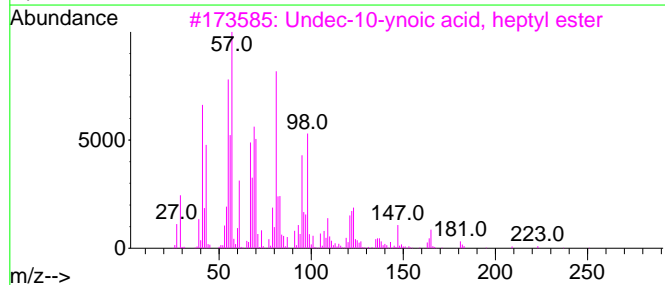
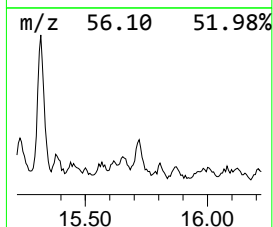
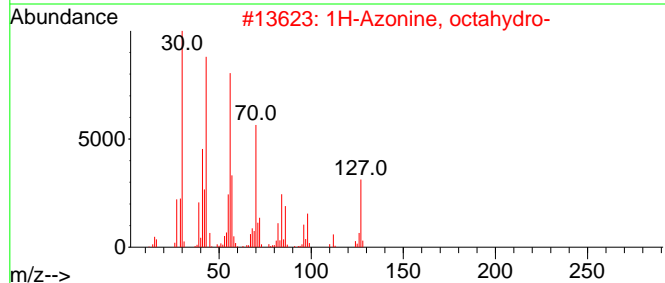
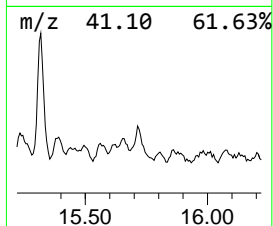
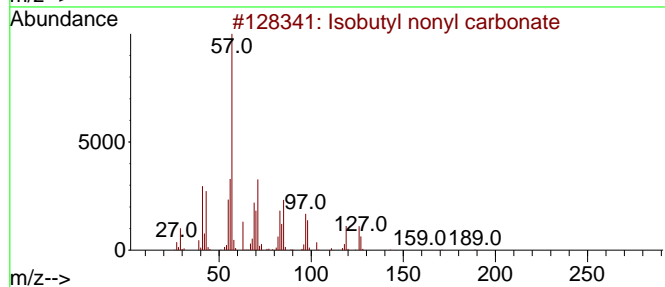
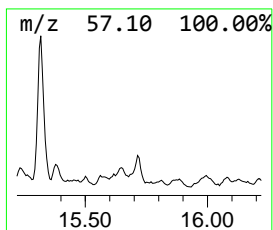
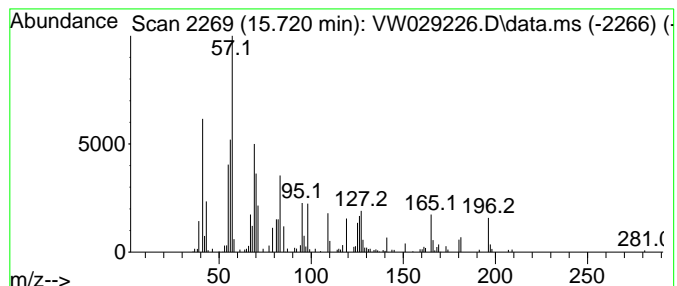
Quant Method : Z:\voasrv\HPCHEM1\MSVOA_W\Method\SFAMWLM061824SMA.M
 Quant Title : SFAM01.0

TIC Library : C:\Database\NIST20.L
 TIC Integration Parameters: LSCINT.P

 Peak Number 19 unknown-04 Concentration Rank 6

R.T.	EstConc	Area	Relative to ISTD	R.T.
15.720	5.85 ug/L	147025	1,4-Dichlorobenzene-d4	13.556

Hit#	of 5	Tentative ID	MW	MolForm	CAS#	Qual
1		Isobutyl nonyl carbonate	244	C14H28O3	959311-27-4	38
2		1H-Azonia, octahydro-	127	C8H17N	005661-71-2	35
3		Undec-10-ynoic acid, heptyl ester	280	C18H32O2	1000406-16-0	35
4		Octane, 2,2-dimethyl-	142	C10H22	015869-87-1	22
5		3-Tetradecene, (E)-	196	C14H28	041446-68-8	22



Data Path : Z:\voasrv\HPCHEM1\MSVOA_W\Data\VW061924\
 Data File : VW029226.D
 Acq On : 19 Jun 2024 20:40
 Operator : SY/MD
 Sample : P2963-03
 Misc : 4.48g/10mL/MSVOA_W/SOIL/A
 ALS Vial : 1 Sample Multiplier: 1

Instrument :
 MSVOA_W
 ClientSampleId :
 A4B48

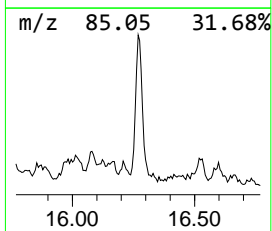
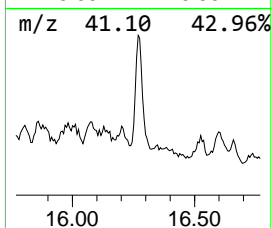
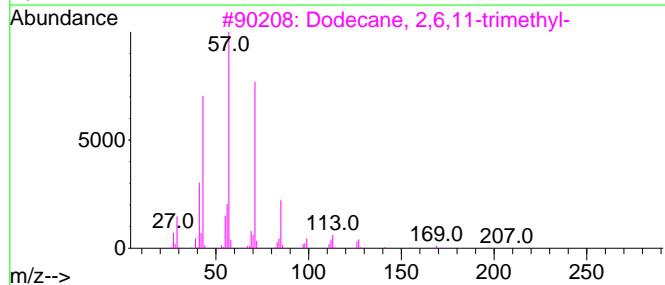
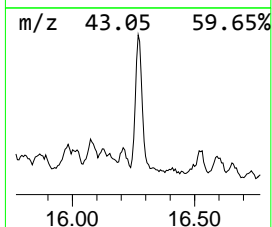
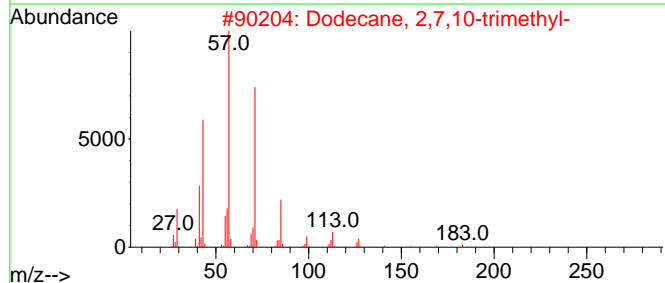
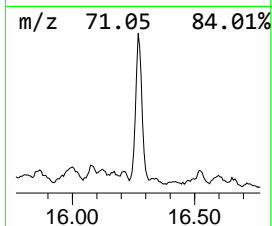
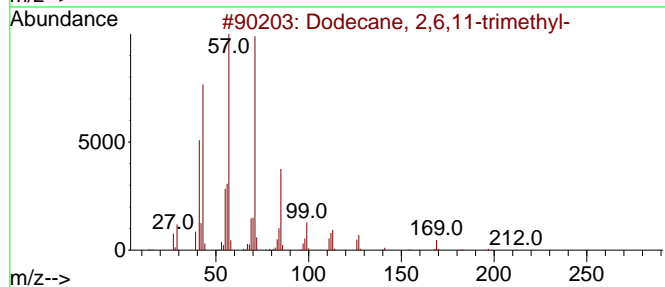
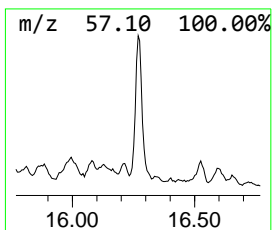
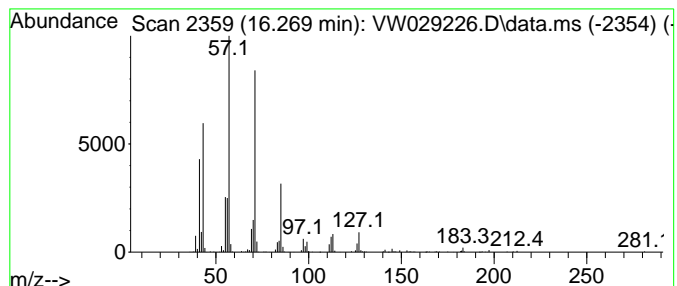
Quant Method : Z:\voasrv\HPCHEM1\MSVOA_W\Method\SFAMWLM061824SMA.M
 Quant Title : SFAM01.0

TIC Library : C:\Database\NIST20.L
 TIC Integration Parameters: LSCINT.P

 Peak Number 20 (DEL) Alkane: Straight-Chai... Concentration Rank 2

R.T.	EstConc	Area	Relative to ISTD	R.T.
16.269	12.80 ug/L	321609	1,4-Dichlorobenzene-d4	13.556

Hit#	of 5	Tentative ID	MW	MolForm	CAS#	Qual
1		Dodecane, 2,6,11-trimethyl-	212	C15H32	031295-56-4	90
2		Dodecane, 2,7,10-trimethyl-	212	C15H32	074645-98-0	90
3		Dodecane, 2,6,11-trimethyl-	212	C15H32	031295-56-4	90
4		Dodecane, 2,6,10-trimethyl-	212	C15H32	003891-98-3	87
5		Dodecane, 2,6,10-trimethyl-	212	C15H32	003891-98-3	86



Data Path : Z:\voasrv\HPCHEM1\MSVOA_W\Data\VW061924\
 Data File : VW029226.D
 Acq On : 19 Jun 2024 20:40
 Operator : SY/MD
 Sample : P2963-03
 Misc : 4.48g/10mL/MSVOA_W/SOIL/A
 ALS Vial : 1 Sample Multiplier: 1

Instrument :
 MSVOA_W
 ClientSampleId :
 A4B48

Quant Method : Z:\voasrv\HPCHEM1\MSVOA_W\Method\SFAMWLM061824SMA.M
 Quant Title : SFAM01.0

TIC Library : C:\Database\NIST0.L
 TIC Integration Parameters: LSCINT.P

TIC Top Hit name	RT	EstConc	Units	Response	--Internal Standard--			
					#	RT	Resp	Conc
unknown-01	10.032	6.2	ug/L	248198	1	8.837	1000880	25.0
(DEL) Alkane: S...	12.776	1.5	ug/L	38089	3	13.556	628014	25.0
unknown-02	12.940	2.4	ug/L	60497	3	13.556	628014	25.0
(DEL) Alkane: S...	13.050	2.2	ug/L	55935	3	13.556	628014	25.0
(DEL) Alkane: S...	13.123	2.4	ug/L	59773	3	13.556	628014	25.0
Carbonic acid, ...	13.403	3.5	ug/L	89183	3	13.556	628014	25.0
4-Isopropyl-1,3...	13.696	1.6	ug/L	40711	3	13.556	628014	25.0
(DEL) Alkane: S...	14.184	1.4	ug/L	35931	3	13.556	628014	25.0
(DEL) Alkane: S...	14.257	2.6	ug/L	66618	3	13.556	628014	25.0
1-Methyldecahyd...	14.379	5.1	ug/L	128693	3	13.556	628014	25.0
(DEL) Alkane: S...	14.489	7.4	ug/L	185592	3	13.556	628014	25.0
(DEL) Alkane: C...	14.787	3.0	ug/L	74599	3	13.556	628014	25.0
(DEL) Alkane: S...	14.830	9.6	ug/L	242111	3	13.556	628014	25.0
4-Bromobutanoic...	15.117	1.7	ug/L	41802	3	13.556	628014	25.0
(DEL) Alkane: S...	15.318	20.2	ug/L	507492	3	13.556	628014	25.0
unknown-03	15.391	5.3	ug/L	132113	3	13.556	628014	25.0
(DEL) Alkane: S...	15.562	3.3	ug/L	81752	3	13.556	628014	25.0
unknown-04	15.720	5.8	ug/L	147025	3	13.556	628014	25.0
(DEL) Alkane: S...	16.269	12.8	ug/L	321609	3	13.556	628014	25.0