

Data Path : Z:\voasrv\HPCHEM1\MSVOA\_W\Data\VW062024\  
 Data File : VW029271.D  
 Acq On : 20 Jun 2024 21:19  
 Operator : SY/MD  
 Sample : P2964-09MS  
 Misc : 5.07g/10mL/MSVOA\_W/SOIL/LA  
 ALS Vial : 31 Sample Multiplier: 1

Instrument :  
 MSVOA\_W  
 ClientSampleId :

Quant Time: Jun 21 04:48:34 2024  
 Quant Method : Z:\voasrv\HPCHEM1\MSVOA\_W\Method\SFAMWLM061824SMA.M  
 Quant Title : SFAM01.0  
 QLast Update : Fri Jun 21 02:43:08 2024  
 Response via : Initial Calibration

Compound	R.T.	QI on	Response	Conc	Units	Dev(Min)
Internal Standards						
1) 1,4-Difluorobenzene	8.837	114	419716	25.000	ug/L	0.00
28) Chlorobenzene-d5	11.629	117	325764	25.000	ug/L	0.00
58) 1,4-Dichlorobenzene-d4	13.556	152	113656	25.000	ug/L	0.00

System Monitoring Compounds						
4) Vinyl chloride-d3	2.363	65	113498	19.537	ug/L	0.00
Spike Amount	25.000	Range	30 - 150	Recovery	=	78.160%
7) Chloroethane-d5	2.893	69	92631	18.882	ug/L	0.00
Spike Amount	25.000	Range	30 - 150	Recovery	=	75.520%
11) 1,1-Dichloroethene-d2	4.021	65	55965	19.952	ug/L	0.00
Spike Amount	25.000	Range	45 - 110	Recovery	=	79.800%
21) 2-Butanone-d5	7.069	46	89380	51.425	ug/L	-0.01
Spike Amount	50.000	Range	20 - 135	Recovery	=	102.860%
24) Chloroform-d	7.648	84	267340	21.353	ug/L	0.00
Spike Amount	25.000	Range	40 - 150	Recovery	=	85.400%
26) 1,2-Dichloroethane-d4	8.307	65	151234	21.038	ug/L	0.00
Spike Amount	25.000	Range	70 - 130	Recovery	=	84.160%
32) Benzene-d6	8.276	84	512762	25.914	ug/L	0.00
Spike Amount	25.000	Range	20 - 135	Recovery	=	103.640%
36) 1,2-Dichloropropane-d6	9.270	67	164822	26.204	ug/L	0.00
Spike Amount	25.000	Range	70 - 120	Recovery	=	104.800%
41) Toluene-d8	10.319	98	431631	24.656	ug/L	0.00
Spike Amount	25.000	Range	30 - 130	Recovery	=	98.640%
43) trans-1,3-Dichloropropene	10.575	79	58283	22.994	ug/L	0.00
Spike Amount	25.000	Range	30 - 135	Recovery	=	91.960%
47) 2-Hexanone-d5	10.922	63	62023	62.903	ug/L	0.00
Spike Amount	50.000	Range	20 - 135	Recovery	=	125.800%
56) 1,1,2,2-Tetrachloroethene	12.690	84	122284	24.427	ug/L	0.00
Spike Amount	25.000	Range	45 - 120	Recovery	=	97.720%
66) 1,2-Dichlorobenzene-d4	13.849	152	89286	22.632	ug/L	0.00
Spike Amount	25.000	Range	75 - 120	Recovery	=	90.520%

Target Compounds						Qvalue
2) Dichlorodifluoromethane	2.015	85	86168	21.043	ug/L	# 86
3) Chloromethane	2.223	50	113515	19.442	ug/L	100
5) Vinyl chloride	2.375	62	127223	18.974	ug/L	99
6) Bromomethane	2.790	94	73570	18.256	ug/L	94
8) Chloroethane	2.930	64	81043	19.761	ug/L	98
9) Trichlorofluoromethane	3.265	101	117788	22.659	ug/L	99
10) 1,1,2-Trichloro-1,2,2-trifluoroethane	4.076	101	107686	18.788	ug/L	91
12) 1,1-Dichloroethene	4.045	96	105031	21.597	ug/L	89
13) Acetone	4.119	43	78417	53.090	ug/L	97
14) Carbon disulfide	4.393	76	275938	17.381	ug/L	100
15) Methyl Acetate	4.667	43	68291	23.289	ug/L	98
16) Methylene chloride	4.917	84	132675	17.977	ug/L	95
17) trans-1,2-Dichloroethene	5.423	96	112855	20.896	ug/L	92
18) Methyl tert-butyl Ether	5.429	73	221928	25.683	ug/L	98
19) 1,1-Dichloroethane	6.216	63	257339	22.061	ug/L	95
20) cis-1,2-Dichloroethene	7.167	96	130060	21.838	ug/L	99
22) 2-Butanone	7.167	43	98761	48.777	ug/L	99
23) Bromochloromethane	7.514	128	57832	21.813	ug/L	93
25) Chloroform	7.679	83	246071	21.603	ug/L	99

Data Path : Z:\voasrv\HPCHEM1\MSVOA\_W\Data\VW062024\  
 Data File : VW029271.D  
 Acq On : 20 Jun 2024 21:19  
 Operator : SY/MD  
 Sample : P2964-09MS  
 Misc : 5.07g/10mL/MSVOA\_W/SOIL/A  
 ALS Vial : 31 Sample Multiplier: 1

**Instrument :**  
 MSVOA\_W  
**ClientSampleId :**

Quant Time: Jun 21 04:48:34 2024  
 Quant Method : Z:\voasrv\HPCHEM1\MSVOA\_W\Method\SFAMWLM061824SMA.M  
 Quant Title : SFAM01.0  
 QLast Update : Fri Jun 21 02:43:08 2024  
 Response via : Initial Calibration

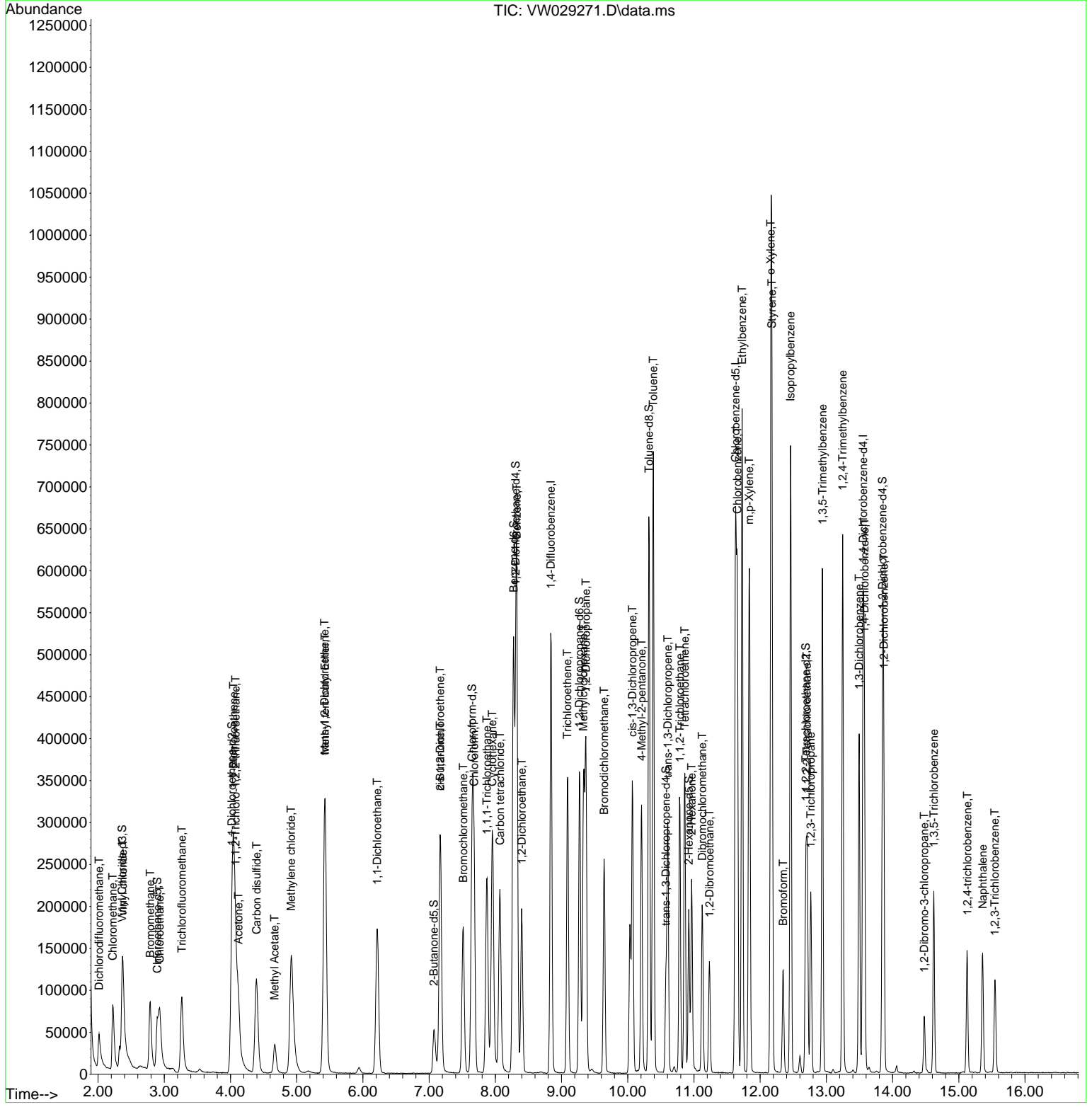
Compound	R. T.	QI on	Response	Conc	Units	Dev(Min)
27) 1,2-Dichloroethane	8.398	62	172824	20.573	ug/L	98
29) Cyclohexane	7.953	56	173054	23.237	ug/L	99
30) 1,1,1-Trichloroethane	7.874	97	189011	26.092	ug/L	97
31) Carbon tetrachloride	8.069	117	165774	25.051	ug/L	95
33) Benzene	8.325	78	516159	26.370	ug/L	100
34) Trichloroethene	9.087	95	126067	24.141	ug/L	95
35) Methylcyclohexane	9.331	83	137074	16.690	ug/L	98
37) 1,2-Dichloropropane	9.368	63	145827	26.514	ug/L	98
38) Bromodichloromethane	9.642	83	168714	25.089	ug/L	98
39) cis-1,3-Dichloropropene	10.069	75	193867	24.935	ug/L	99
40) 4-Methyl-2-pentanone	10.209	43	216837	63.607	ug/L	98
42) Toluene	10.386	91	504183	25.056	ug/L	97
44) trans-1,3-Dichloropropene	10.605	75	160188	24.401	ug/L	99
45) 1,1,2-Trichloroethane	10.788	97	99644	26.013	ug/L	97
46) Tetrachloroethene	10.861	164	75560	20.699	ug/L	92
48) 2-Hexanone	10.965	43	148273	61.297	ug/L	97
49) Dibromodichloromethane	11.123	129	100319	25.053	ug/L	95
50) 1,2-Dibromoethane	11.233	107	86821	25.249	ug/L	99
51) Chlorobenzene	11.654	112	287704	22.018	ug/L	98
52) Ethylbenzene	11.727	91	526692	23.059	ug/L	98
53) m,p-Xylene	11.837	106	186453	22.348	ug/L	92
54) o-Xylene	12.160	106	182021	23.344	ug/L	92
55) Styrene	12.178	104	293508	21.589	ug/L	97
57) 1,1,2,2-Tetrachloroethane	12.709	83	116650	24.618	ug/L	97
59) Bromoform	12.349	173	54623	35.066	ug/L	97
60) Isopropylbenzene	12.459	105	459921	30.369	ug/L	99
61) 1,2,3-Trichloropropane	12.763	75	89069	35.929	ug/L	99
62) 1,3,5-Trimethylbenzene	12.940	105	303953	27.713	ug/L	96
63) 1,2,4-Trimethylbenzene	13.245	105	325288	27.565	ug/L	98
64) 1,3-Dichlorobenzene	13.495	146	151595	23.131	ug/L	91
65) 1,4-Dichlorobenzene	13.574	146	153118	21.959	ug/L	100
67) 1,2-Dichlorobenzene	13.867	146	137438	22.684	ug/L	98
68) 1,2-Dibromo-3-chloropropane	14.476	75	17670	30.544	ug/L	93
69) 1,3,5-Trichlorobenzene	14.623	180	61372	13.875	ug/L	98
70) 1,2,4-trichlorobenzene	15.129	180	42220	11.775	ug/L	97
71) Naphthalene	15.360	128	117741	16.638	ug/L	99
72) 1,2,3-Trichlorobenzene	15.543	180	35121	10.750	ug/L	98

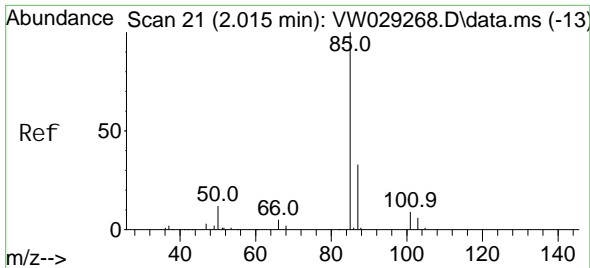
(#) = qualifier out of range (m) = manual integration (+) = signals summed

Data Path : Z:\voasrv\HPCHEM1\MSVOA\_W\Data\VW062024\  
 Data File : VW029271.D  
 Acq On : 20 Jun 2024 21:19  
 Operator : SY/MD  
 Sample : P2964-09MS  
 Misc : 5.07g/10mL/MSVOA\_W/SOIL/A  
 ALS Vial : 31 Sample Multiplier: 1

Instrument :  
 MSVOA\_W  
 ClientSampleId :

Quant Time: Jun 21 04:48:34 2024  
 Quant Method : Z:\voasrv\HPCHEM1\MSVOA\_W\Method\SFAMWLM061824SMA.M  
 Quant Title : SFAM01.0  
 QLast Update : Fri Jun 21 02:43:08 2024  
 Response via : Initial Calibration

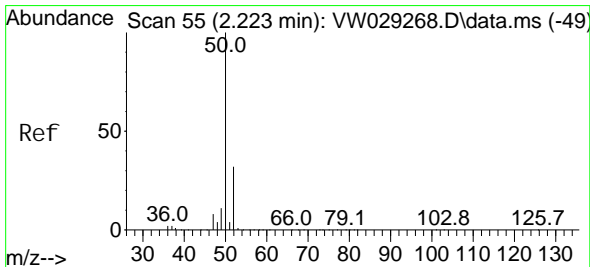
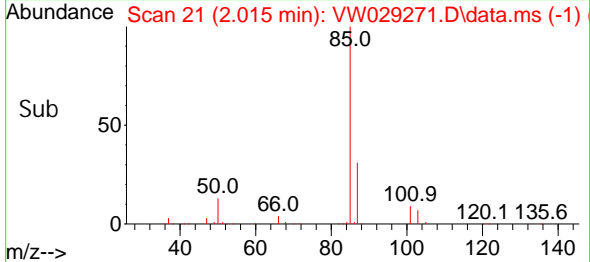
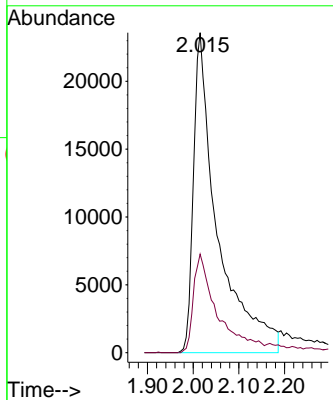
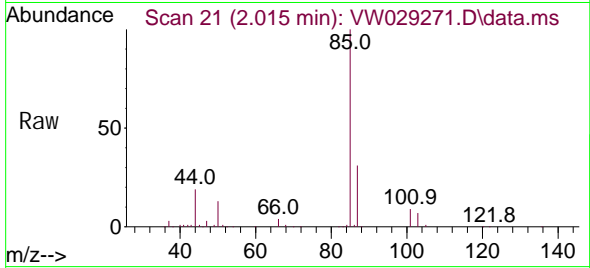




#2  
 Di chl orodi fluoromethane  
 Concen: 21.043 ug/L  
 RT: 2.015 min Scan# 21  
 Delta R.T. 0.000 min  
 Lab File: VW029271.D  
 Acq: 20 Jun 2024 21:19

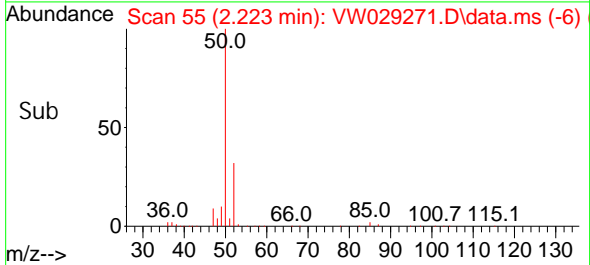
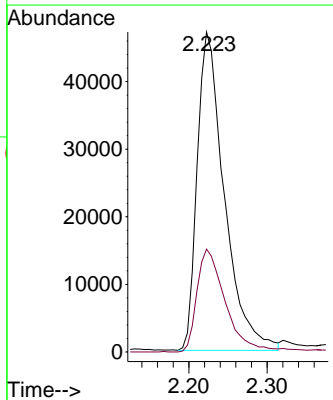
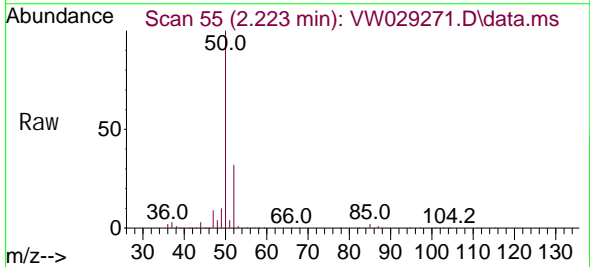
Instrument :  
 MSVOA\_W  
 ClientSampleId :

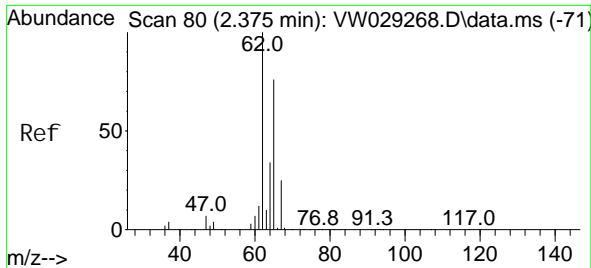
Tgt Ion: 85 Resp: 86168  
 Ion Ratio Lower Upper  
 85 100  
 87 22.4 23.8 35.6#



#3  
 Chloromethane  
 Concen: 19.442 ug/L  
 RT: 2.223 min Scan# 55  
 Delta R.T. 0.000 min  
 Lab File: VW029271.D  
 Acq: 20 Jun 2024 21:19

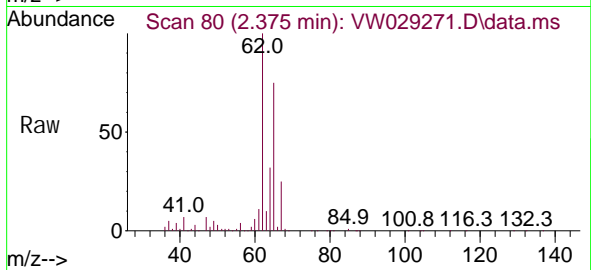
Tgt Ion: 50 Resp: 113515  
 Ion Ratio Lower Upper  
 50 100  
 52 32.1 22.3 41.5



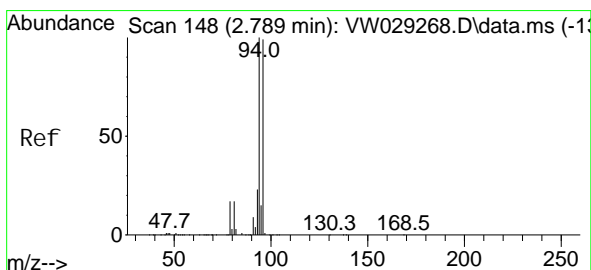
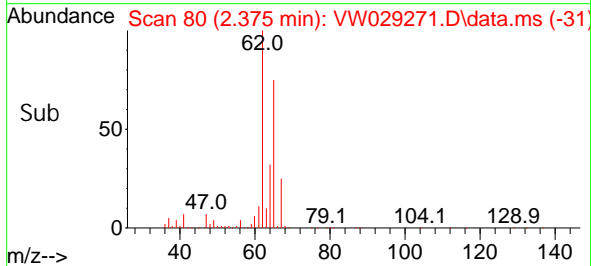
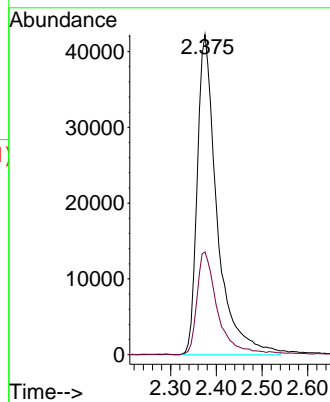


#5  
 Vinyl chloride  
 Concen: 18.974 ug/L  
 RT: 2.375 min Scan# 80  
 Delta R.T. 0.000 min  
 Lab File: VW029271.D  
 Acq: 20 Jun 2024 21:19

Instrument :  
 MSVOA\_W  
 ClientSampleId :

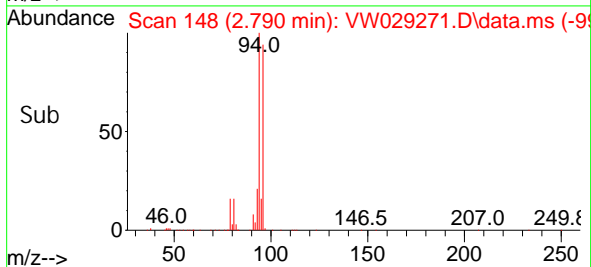
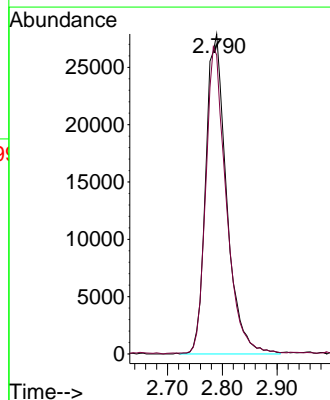
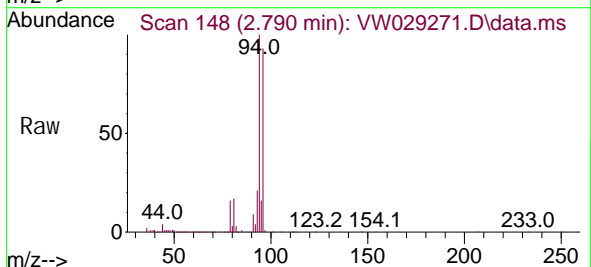


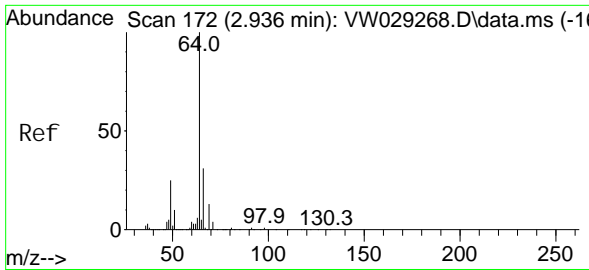
Tgt Ion: 62 Resp: 127223  
 Ion Ratio Lower Upper  
 62 100  
 64 32.1 22.0 40.8



#6  
 Bromomethane  
 Concen: 18.256 ug/L  
 RT: 2.790 min Scan# 148  
 Delta R.T. 0.000 min  
 Lab File: VW029271.D  
 Acq: 20 Jun 2024 21:19

Tgt Ion: 94 Resp: 73570  
 Ion Ratio Lower Upper  
 94 100  
 96 93.4 69.5 129.1

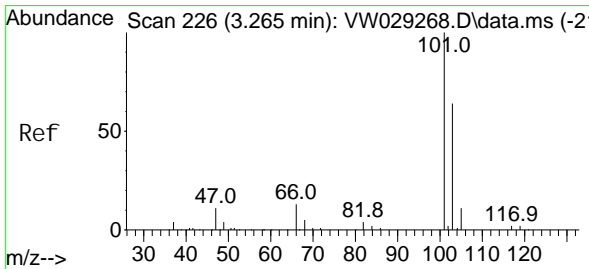
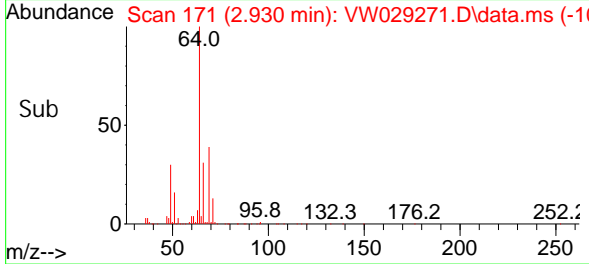
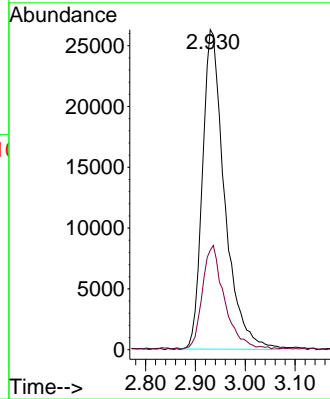
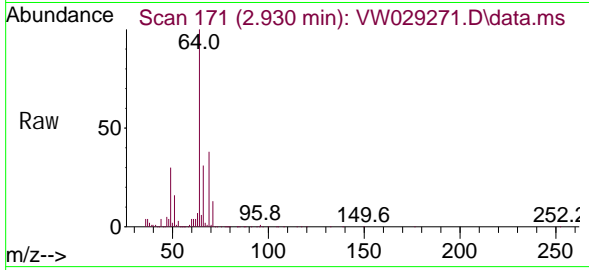




#8  
 Chloroethane  
 Concen: 19.761 ug/L  
 RT: 2.930 min Scan# 171  
 Delta R.T. -0.006 min  
 Lab File: VW029271.D  
 Acq: 20 Jun 2024 21:19

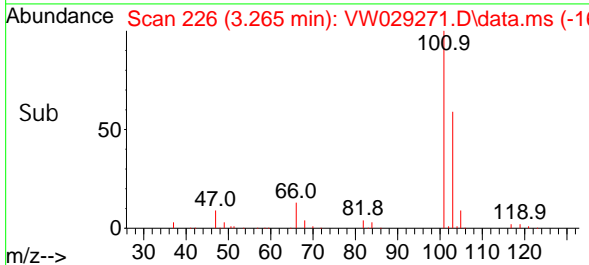
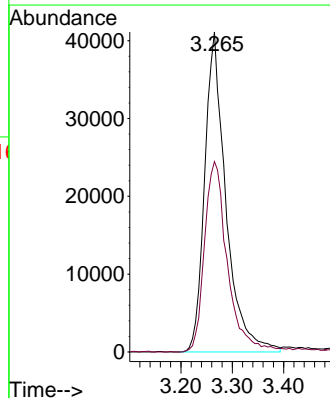
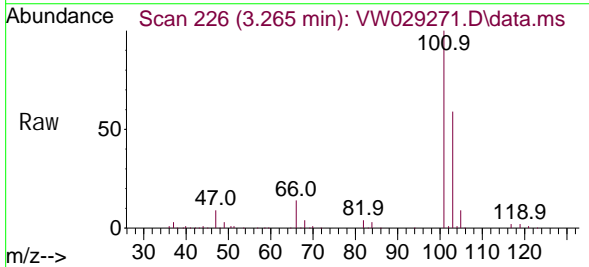
Instrument :  
 MSVOA\_W  
 ClientSampleId :

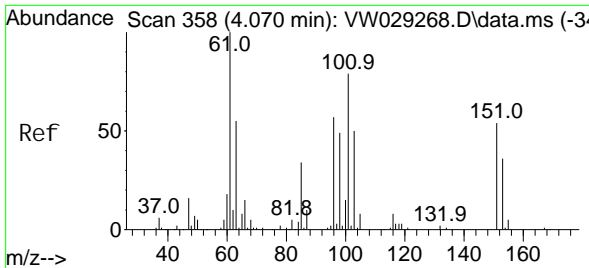
Tgt Ion: 64 Resp: 81043  
 Ion Ratio Lower Upper  
 64 100  
 66 31.1 22.5 41.9



#9  
 Trichlorofluoromethane  
 Concen: 22.659 ug/L  
 RT: 3.265 min Scan# 226  
 Delta R.T. 0.000 min  
 Lab File: VW029271.D  
 Acq: 20 Jun 2024 21:19

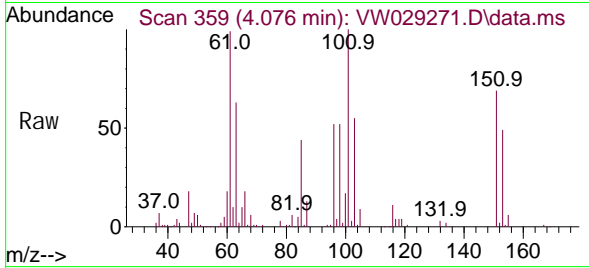
Tgt Ion: 101 Resp: 117788  
 Ion Ratio Lower Upper  
 101 100  
 103 64.0 50.8 76.2



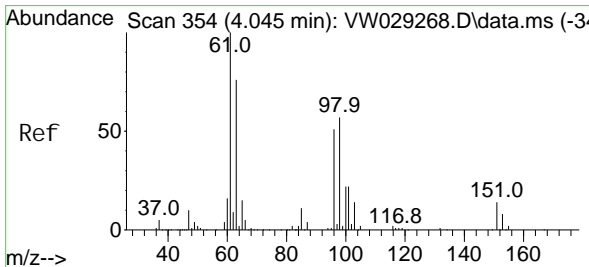
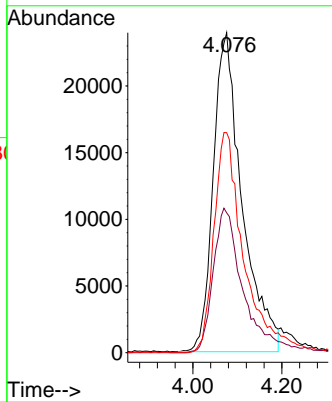
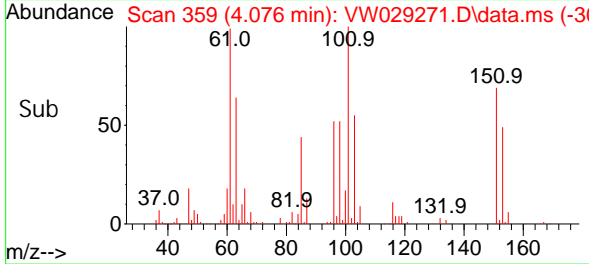


#10  
 1,1,2-Tri chloro-1,2,2-tri fluoroethane  
 Concen: 18.788 ug/L  
 RT: 4.076 min Scan# 359  
 Delta R.T. 0.006 min  
 Lab File: VW029271.D  
 Acq: 20 Jun 2024 21:19

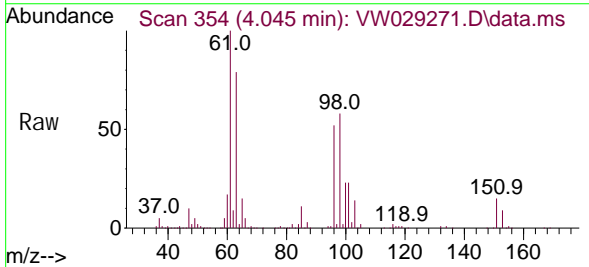
Instrument : MSVOA\_W  
 ClientSampleId :



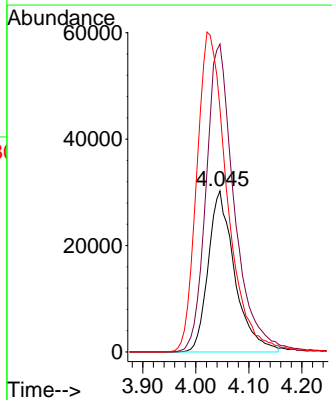
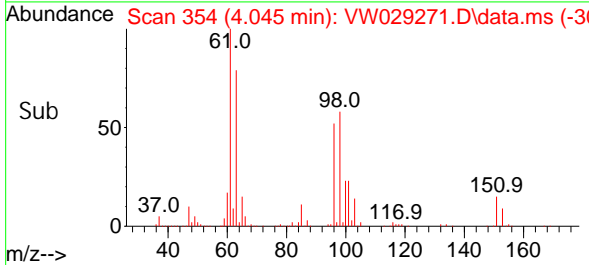
Tgt Ion: 101 Resp: 107686  
 Ion Ratio Lower Upper  
 101 100  
 85 43.9 30.2 45.2  
 151 71.5 52.2 78.4

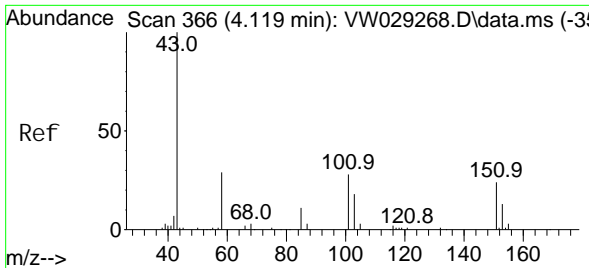


#12  
 1,1-Di chloroethene  
 Concen: 21.597 ug/L  
 RT: 4.045 min Scan# 354  
 Delta R.T. 0.000 min  
 Lab File: VW029271.D  
 Acq: 20 Jun 2024 21:19



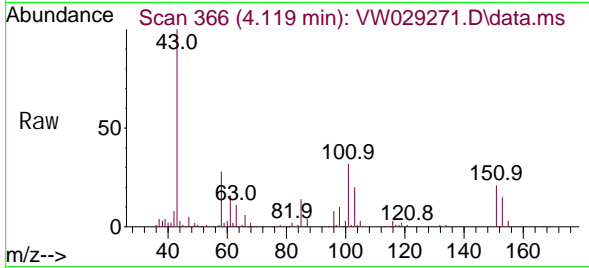
Tgt Ion: 96 Resp: 105031  
 Ion Ratio Lower Upper  
 96 100  
 61 191.2 140.1 260.3  
 63 151.2 122.0 226.6



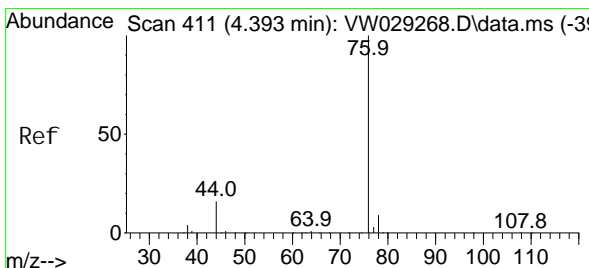
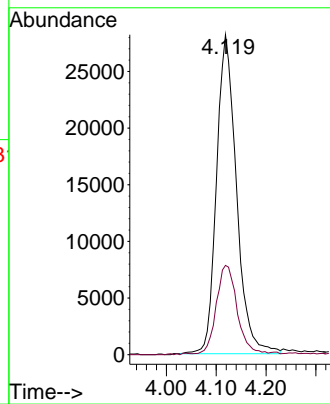
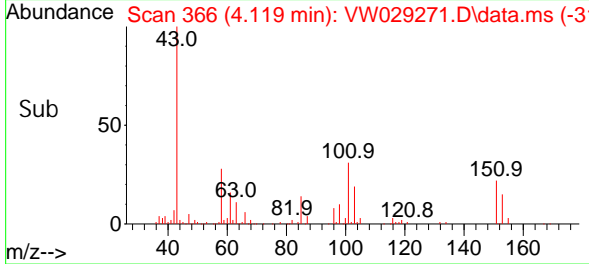


#13  
 Acetone  
 Concen: 53.090 ug/L  
 RT: 4.119 min Scan# 366  
 Delta R.T. 0.000 min  
 Lab File: VW029271.D  
 Acq: 20 Jun 2024 21:19

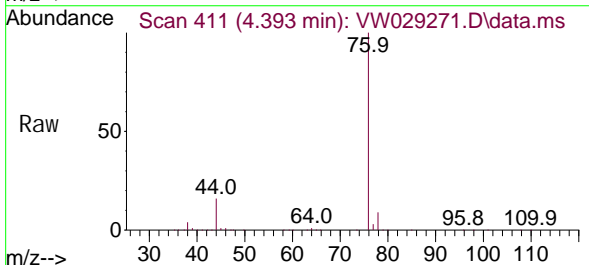
Instrument : MSVOA\_W  
 ClientSampleId :



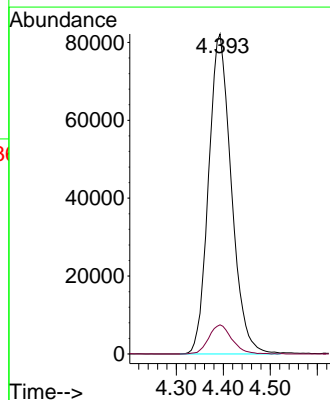
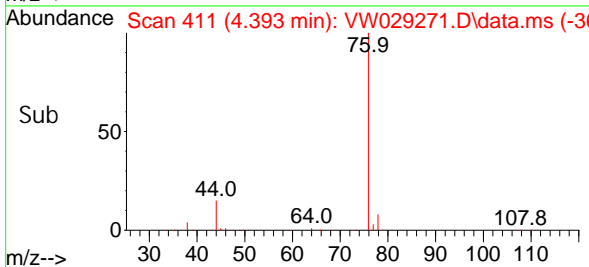
Tgt Ion: 43 Resp: 78417  
 Ion Ratio Lower Upper  
 43 100  
 58 29.0 0.0 61.4



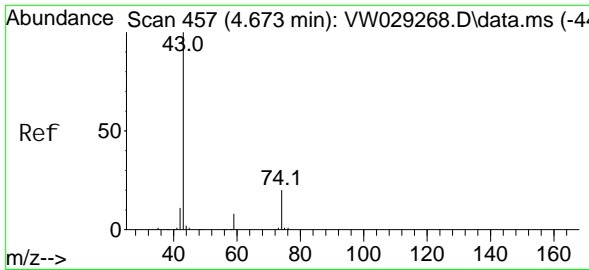
#14  
 Carbon di sul fi de  
 Concen: 17.381 ug/L  
 RT: 4.393 min Scan# 411  
 Delta R.T. 0.000 min  
 Lab File: VW029271.D  
 Acq: 20 Jun 2024 21:19



Tgt Ion: 76 Resp: 275938  
 Ion Ratio Lower Upper  
 76 100  
 78 9.1 7.2 10.8

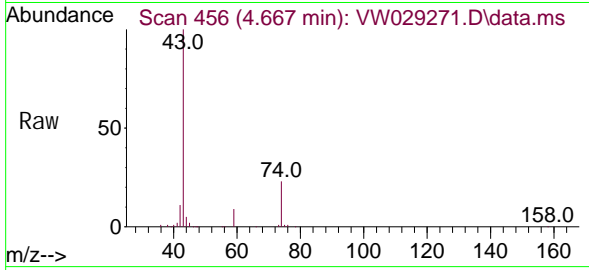




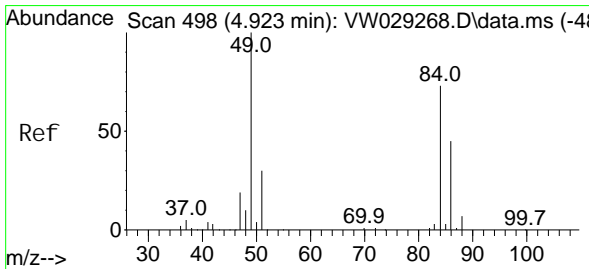
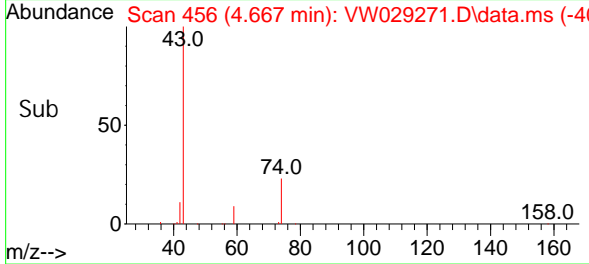
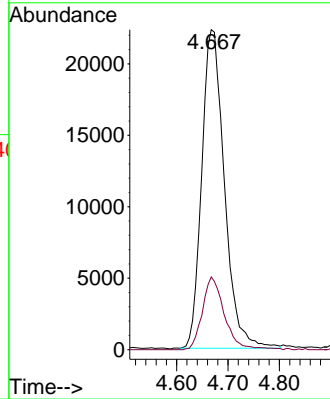


#15  
Methyl Acetate  
Concen: 23.289 ug/L  
RT: 4.667 min Scan# 456  
Delta R.T. -0.006 min  
Lab File: VW029271.D  
Acq: 20 Jun 2024 21:19

Instrument :  
MSVOA\_W  
ClientSampleId :

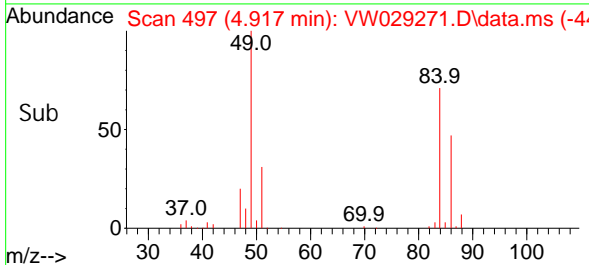
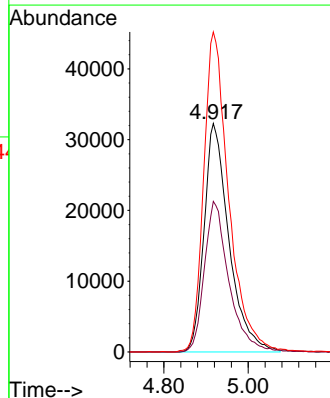
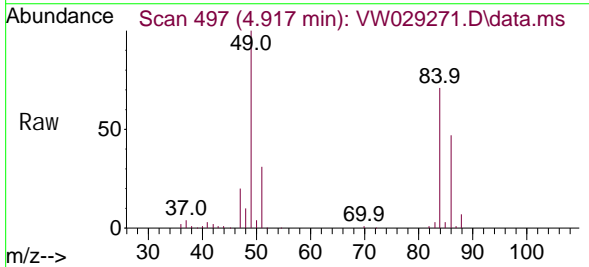


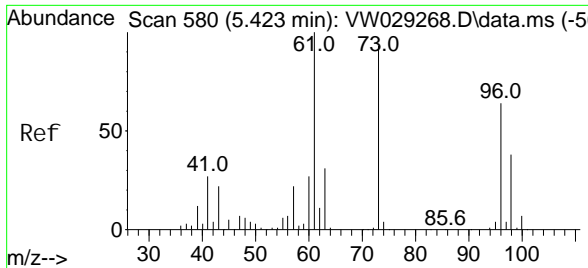
Tgt Ion: 43 Resp: 68291  
Ion Ratio Lower Upper  
43 100  
74 21.7 16.6 25.0



#16  
Methylene chloride  
Concen: 17.977 ug/L  
RT: 4.917 min Scan# 497  
Delta R.T. -0.006 min  
Lab File: VW029271.D  
Acq: 20 Jun 2024 21:19

Tgt Ion: 84 Resp: 132675  
Ion Ratio Lower Upper  
84 100  
86 65.9 41.4 77.0  
49 140.0 95.7 177.7



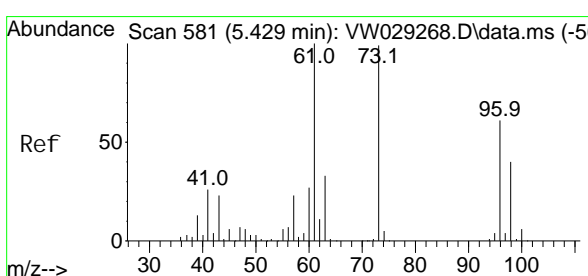
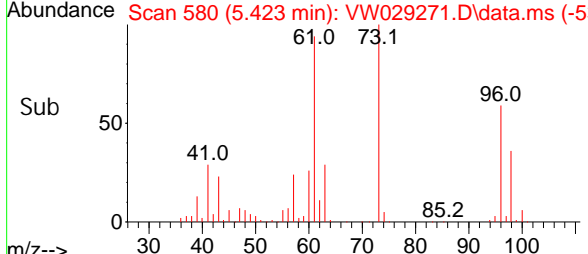
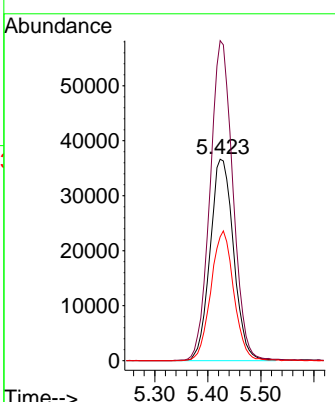
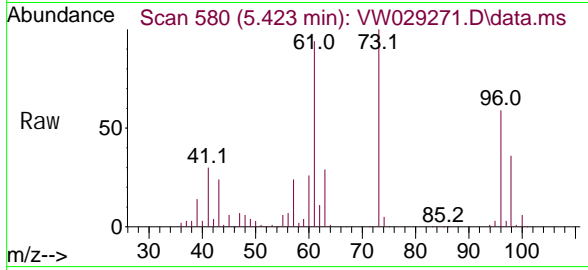


#17  
 trans-1, 2-Di chloroethene  
 Concen: 20.896 ug/L  
 RT: 5.423 min Scan# 580  
 Delta R.T. 0.000 min  
 Lab File: VW029271.D  
 Acq: 20 Jun 2024 21:19

Instrument : MSVOA\_W  
 ClientSampleId :

Tgt Ion: 96 Resp: 112855

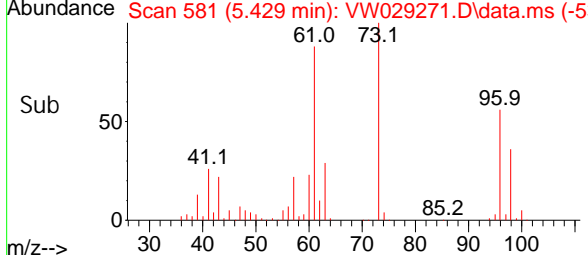
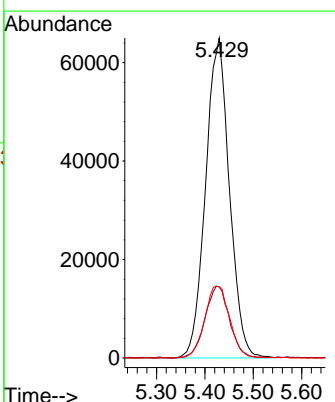
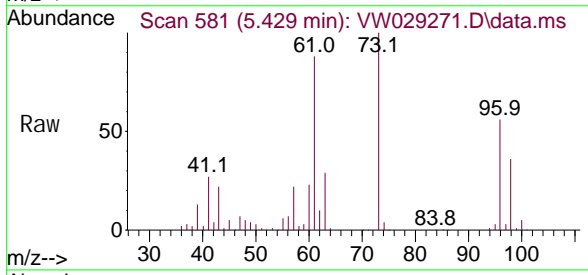
Ion	Ratio	Lower	Upper
96	100		
61	158.8	101.5	188.5
98	61.4	43.3	80.3

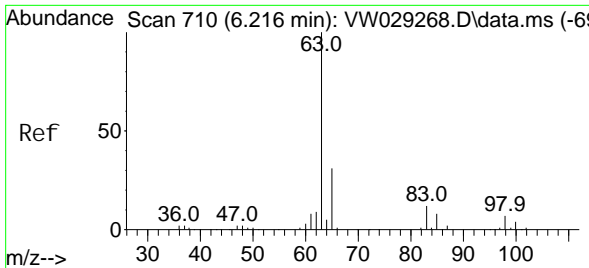


#18  
 Methyl tert-butyl Ether  
 Concen: 25.683 ug/L  
 RT: 5.429 min Scan# 581  
 Delta R.T. 0.000 min  
 Lab File: VW029271.D  
 Acq: 20 Jun 2024 21:19

Tgt Ion: 73 Resp: 221928

Ion	Ratio	Lower	Upper
73	100		
43	23.0	19.5	29.3
57	23.5	18.4	27.6



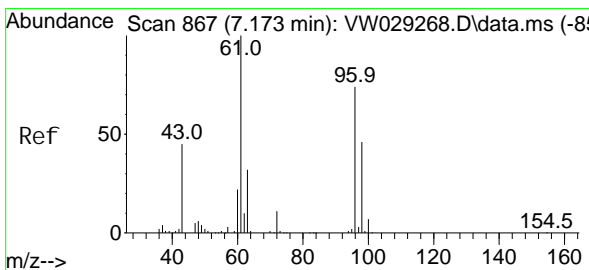
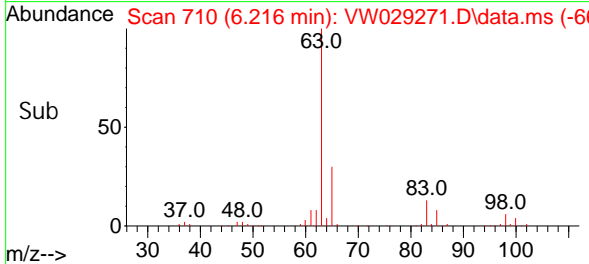
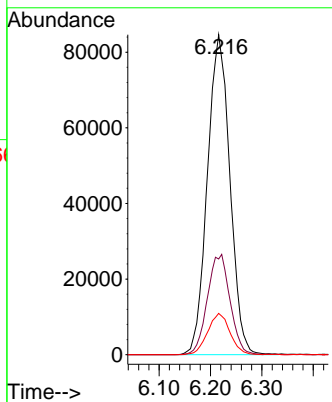
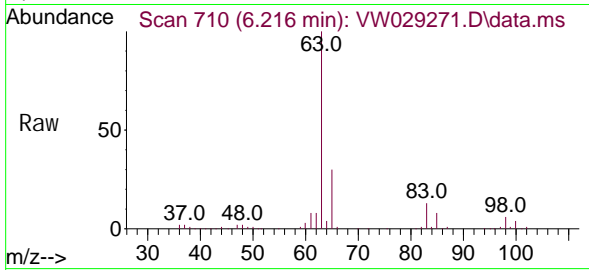


#19  
 1,1-Dichloroethane  
 Concen: 22.061 ug/L  
 RT: 6.216 min Scan# 710  
 Delta R.T. 0.000 min  
 Lab File: VW029271.D  
 Acq: 20 Jun 2024 21:19

Instrument : MSVOA\_W  
 ClientSampleId :

Tgt Ion: 63 Resp: 257339

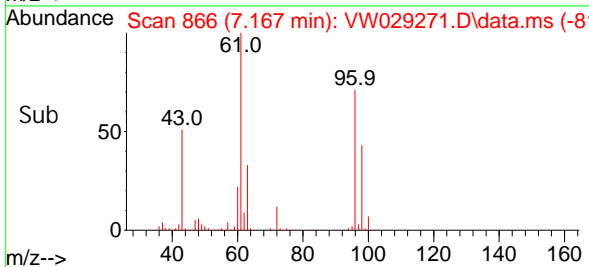
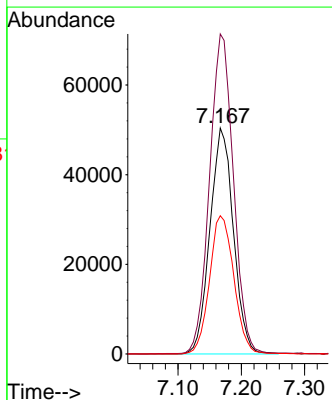
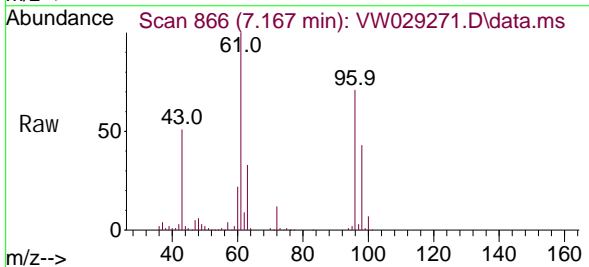
Ion	Ratio	Lower	Upper
63	100		
65	29.9	23.4	43.4
83	12.9	8.9	16.5

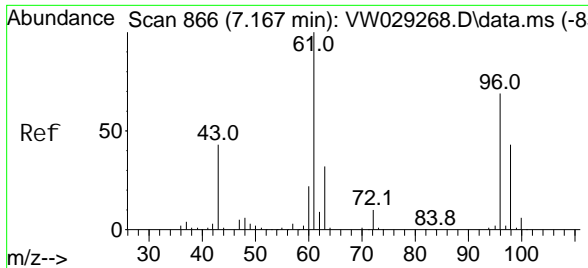


#20  
 cis-1,2-Dichloroethene  
 Concen: 21.838 ug/L  
 RT: 7.167 min Scan# 866  
 Delta R.T. -0.006 min  
 Lab File: VW029271.D  
 Acq: 20 Jun 2024 21:19

Tgt Ion: 96 Resp: 130060

Ion	Ratio	Lower	Upper
96	100		
61	141.6	97.8	181.6
98	61.2	43.0	79.8

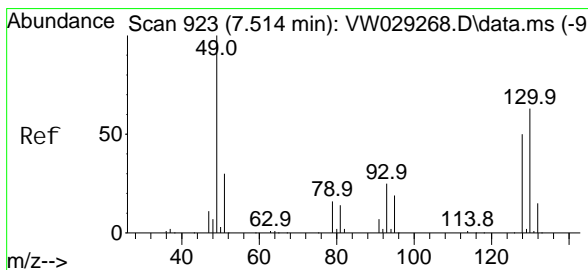
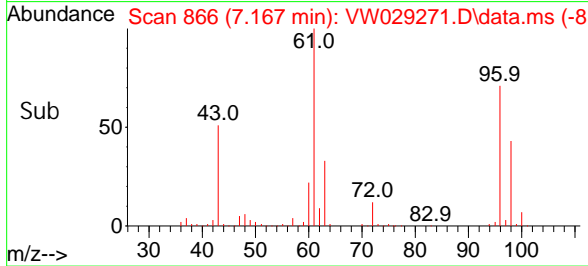
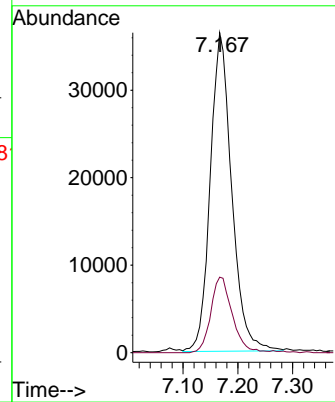
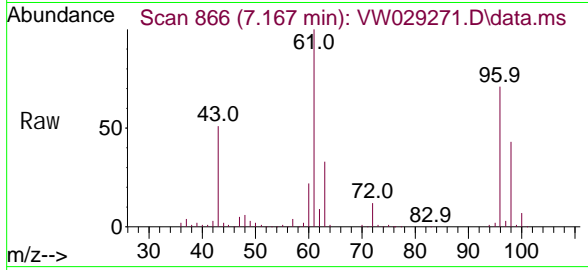




#22  
 2-Butanone  
 Concen: 48.777 ug/L  
 RT: 7.167 min Scan# 866  
 Delta R.T. 0.000 min  
 Lab File: VW029271.D  
 Acq: 20 Jun 2024 21:19

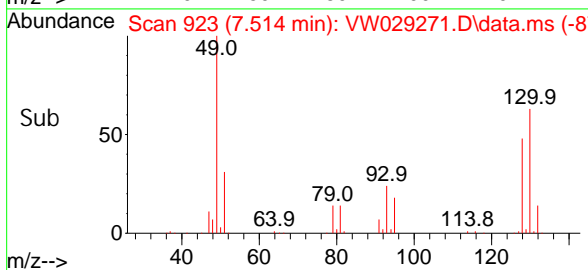
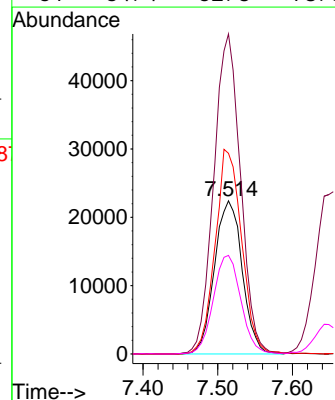
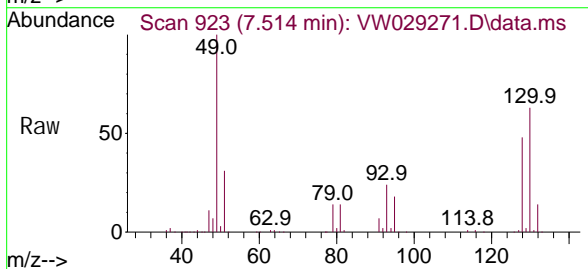
Instrument : MSVOA\_W  
 ClientSampleId :

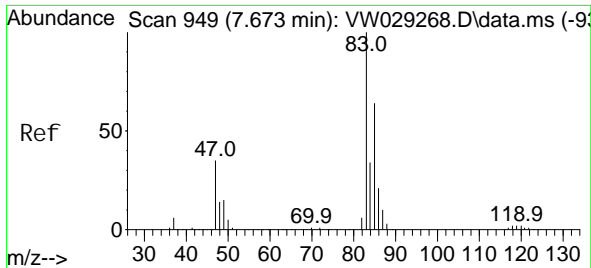
Tgt Ion: 43 Resp: 98761  
 Ion Ratio Lower Upper  
 43 100  
 72 23.3 11.9 35.7



#23  
 Bromochloromethane  
 Concen: 21.813 ug/L  
 RT: 7.514 min Scan# 923  
 Delta R.T. 0.000 min  
 Lab File: VW029271.D  
 Acq: 20 Jun 2024 21:19

Tgt Ion: 128 Resp: 57832  
 Ion Ratio Lower Upper  
 128 100  
 49 209.0 142.6 264.8  
 130 131.1 79.7 148.1  
 51 64.4 52.3 78.5

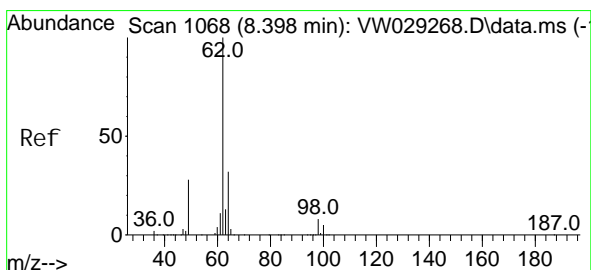
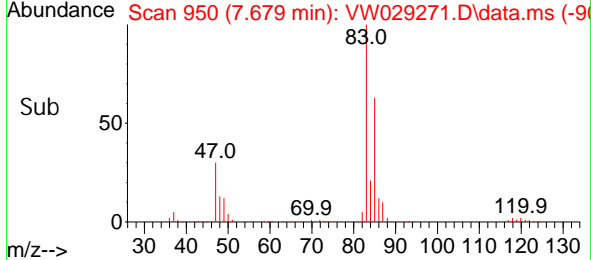
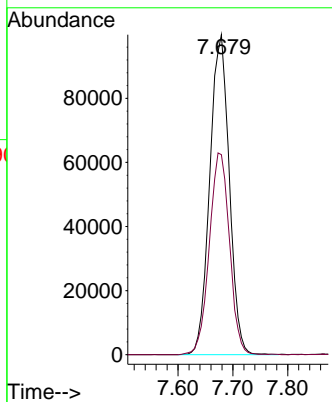
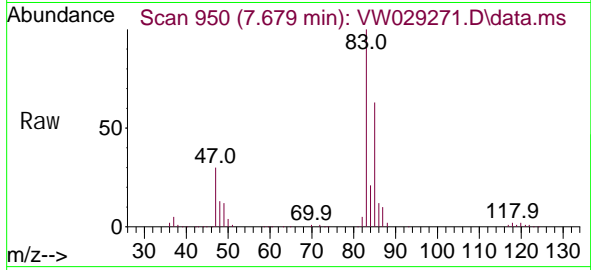




#25  
 Chloroform  
 Concen: 21.603 ug/L  
 RT: 7.679 min Scan# 949  
 Delta R.T. 0.006 min  
 Lab File: VW029271.D  
 Acq: 20 Jun 2024 21:19

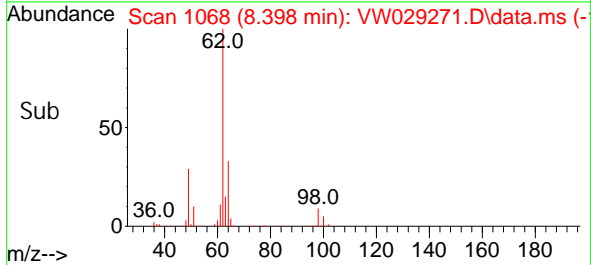
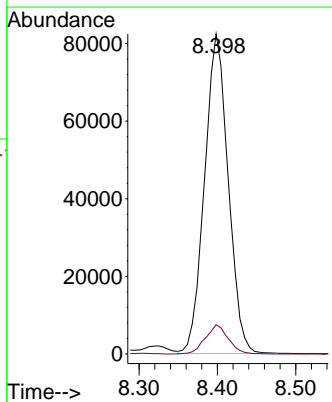
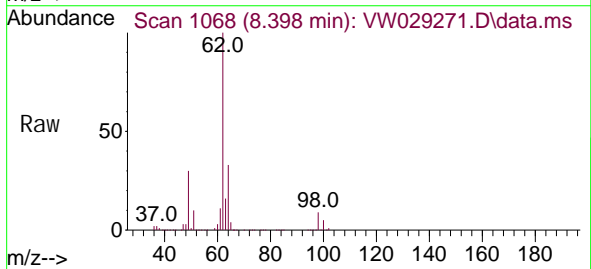
Instrument : MSVOA\_W  
 ClientSampleId :

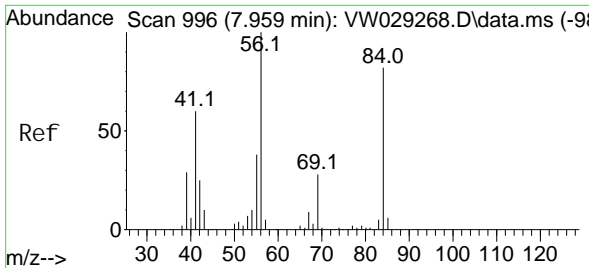
Tgt Ion: 83 Resp: 246071  
 Ion Ratio Lower Upper  
 83 100  
 85 62.5 44.4 82.4



#27  
 1,2-Dichloroethane  
 Concen: 20.573 ug/L  
 RT: 8.398 min Scan# 1068  
 Delta R.T. 0.000 min  
 Lab File: VW029271.D  
 Acq: 20 Jun 2024 21:19

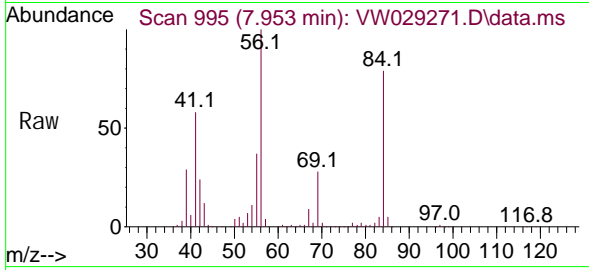
Tgt Ion: 62 Resp: 172824  
 Ion Ratio Lower Upper  
 62 100  
 98 9.1 6.6 10.0





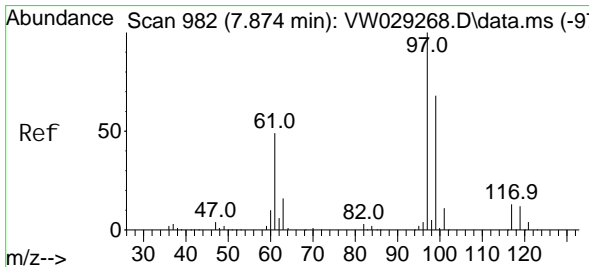
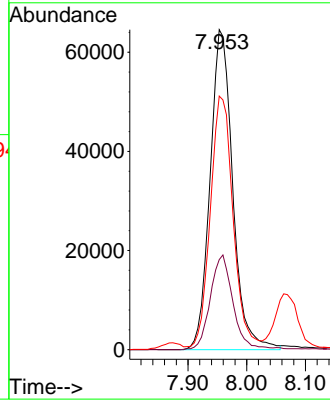
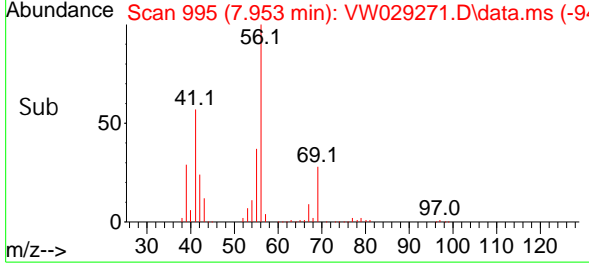
#29  
 Cycl ohexane  
 Concen: 23.237 ug/L  
 RT: 7.953 min Scan# 995  
 Delta R.T. -0.006 min  
 Lab File: VW029271.D  
 Acq: 20 Jun 2024 21:19

Instrument :  
 MSVOA\_W  
 ClientSampleId :

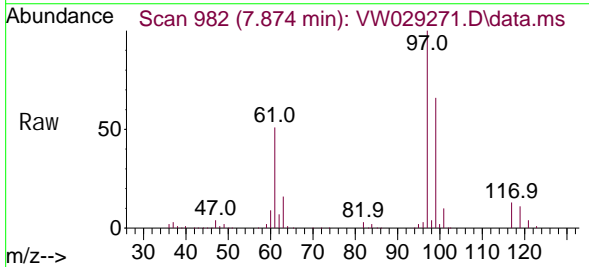


Tgt Ion: 56 Resp: 173054

Ion	Ratio	Lower	Upper
56	100		
69	29.4	23.4	35.0
84	79.5	64.5	96.7

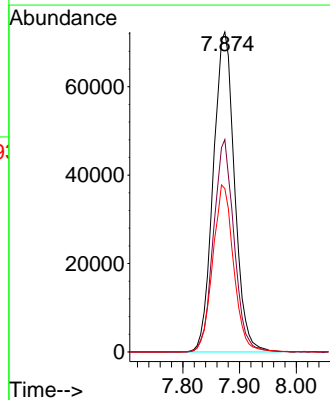
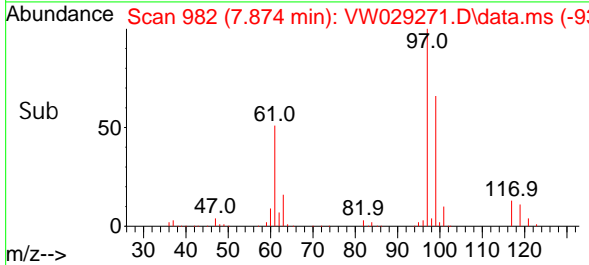


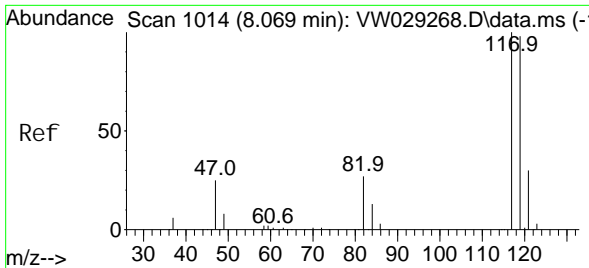
#30  
 1,1,1-Tri chloroethane  
 Concen: 26.092 ug/L  
 RT: 7.874 min Scan# 982  
 Delta R.T. 0.000 min  
 Lab File: VW029271.D  
 Acq: 20 Jun 2024 21:19



Tgt Ion: 97 Resp: 189011

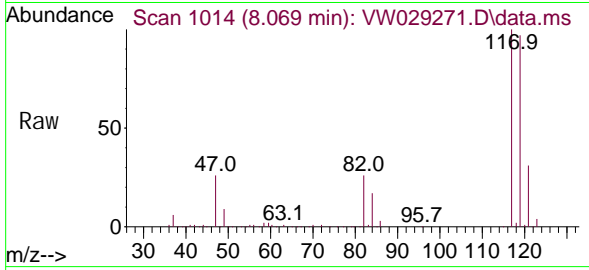
Ion	Ratio	Lower	Upper
97	100		
99	64.1	53.0	79.4
61	51.2	43.0	64.4



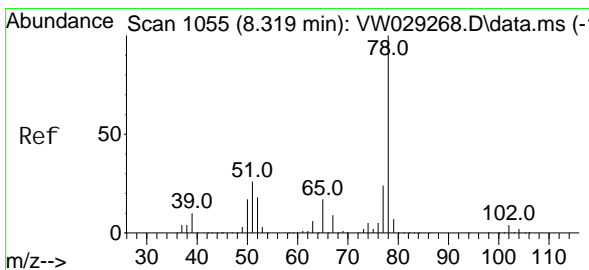
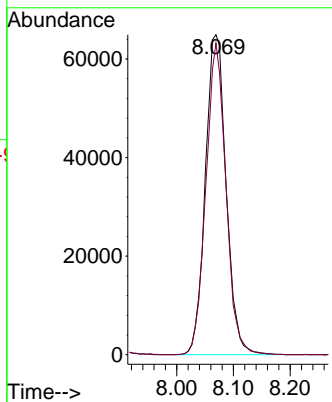
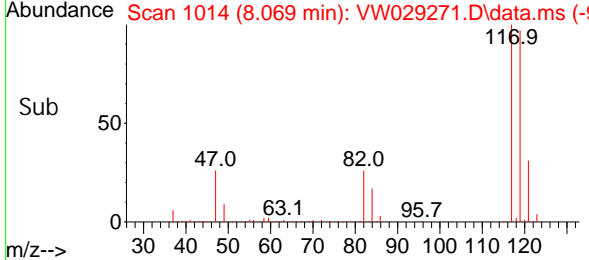


#31  
 Carbon tetrachloride  
 Concen: 25.051 ug/L  
 RT: 8.069 min Scan# 1014  
 Delta R.T. 0.000 min  
 Lab File: VW029271.D  
 Acq: 20 Jun 2024 21:19

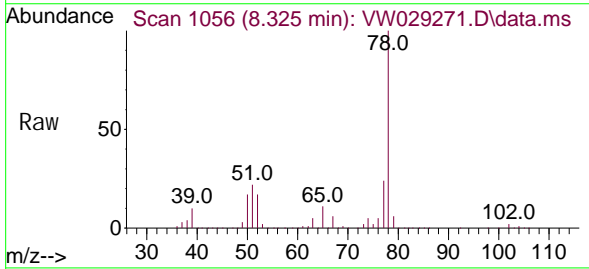
Instrument : MSVOA\_W  
 ClientSampleId :



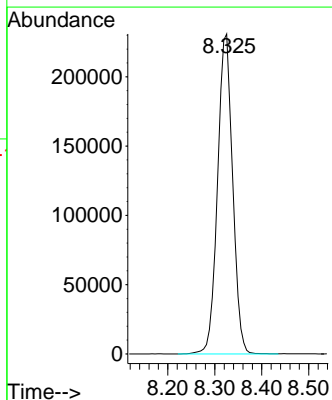
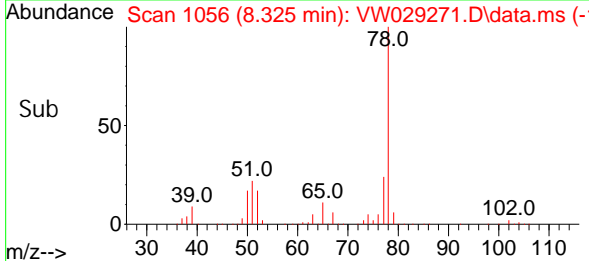
Tgt Ion: 117 Resp: 165774  
 Ion Ratio Lower Upper  
 117 100  
 119 93.7 79.0 118.4

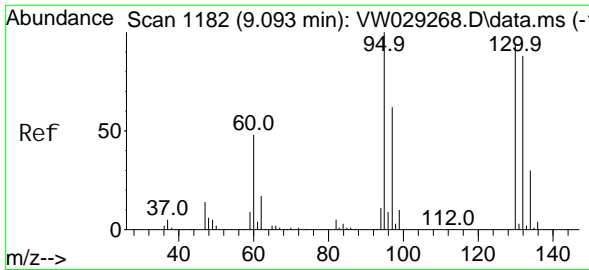


#33  
 Benzene  
 Concen: 26.370 ug/L  
 RT: 8.325 min Scan# 1056  
 Delta R.T. 0.006 min  
 Lab File: VW029271.D  
 Acq: 20 Jun 2024 21:19



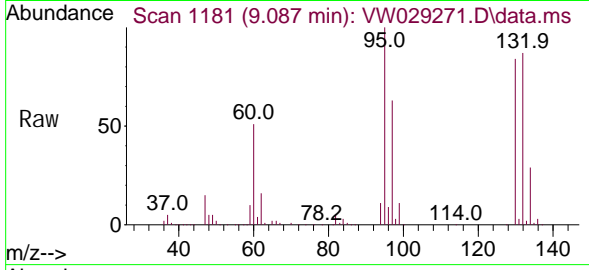
Tgt Ion: 78 Resp: 516159



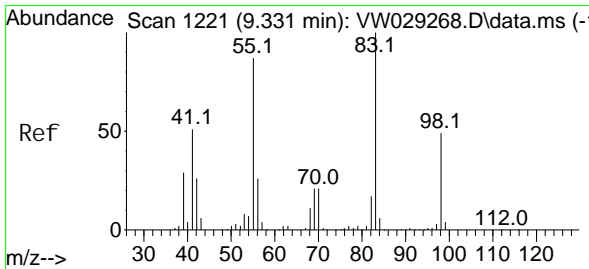
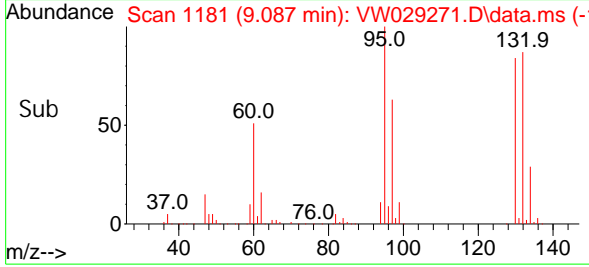
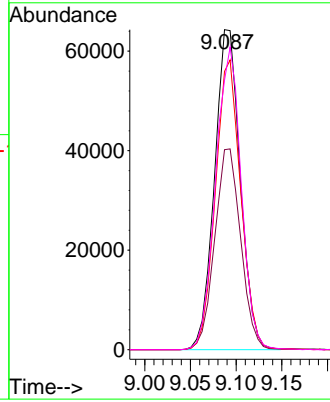


#34  
 Trichloroethene  
 Concen: 24.141 ug/L  
 RT: 9.087 min Scan# 1181  
 Delta R.T. -0.006 min  
 Lab File: VW029271.D  
 Acq: 20 Jun 2024 21:19

Instrument :  
 MSVOA\_W  
 ClientSampleId :

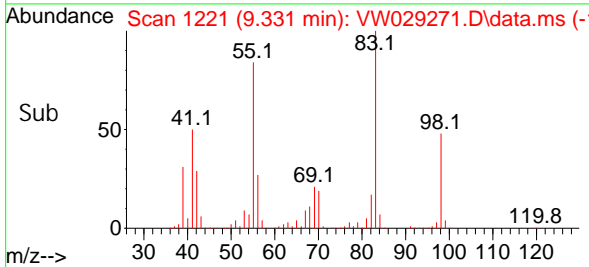
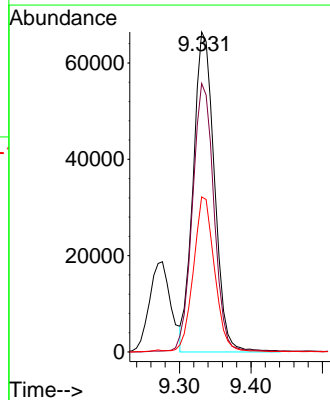
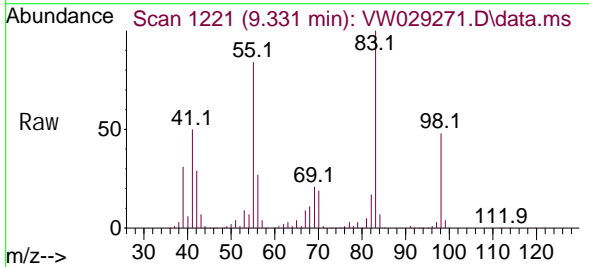


Tgt Ion: 95 Resp: 126067  
 Ion Ratio Lower Upper  
 95 100  
 97 62.5 45.7 84.9  
 132 86.9 66.4 123.4  
 130 84.3 61.6 114.4

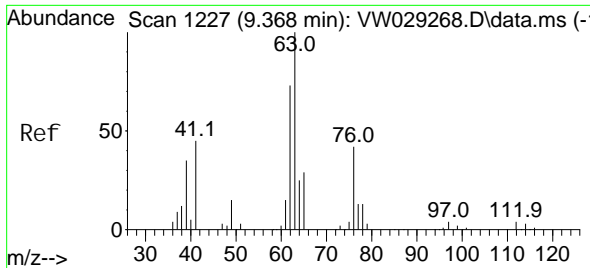


#35  
 Methyl cycl ohexane  
 Concen: 16.690 ug/L  
 RT: 9.331 min Scan# 1221  
 Delta R.T. 0.000 min  
 Lab File: VW029271.D  
 Acq: 20 Jun 2024 21:19

Tgt Ion: 83 Resp: 137074  
 Ion Ratio Lower Upper  
 83 100  
 55 85.2 69.5 104.3  
 98 48.3 38.0 57.0





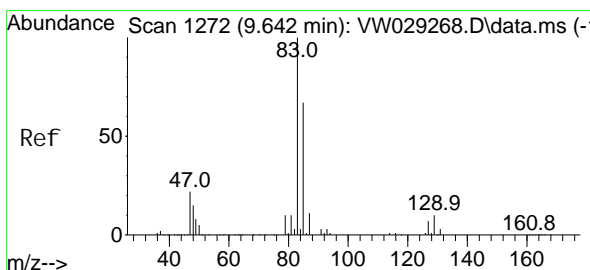
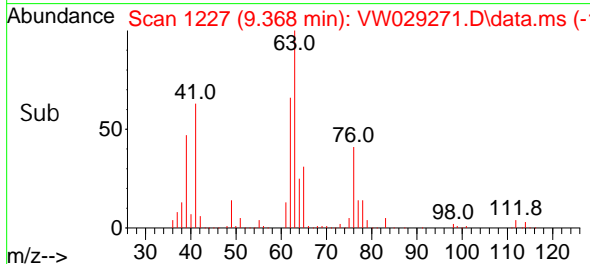
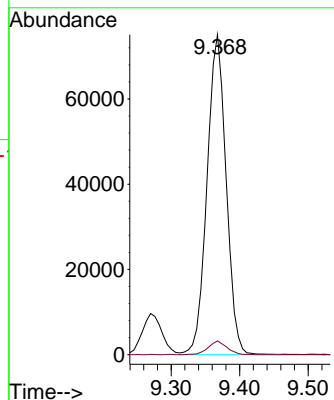
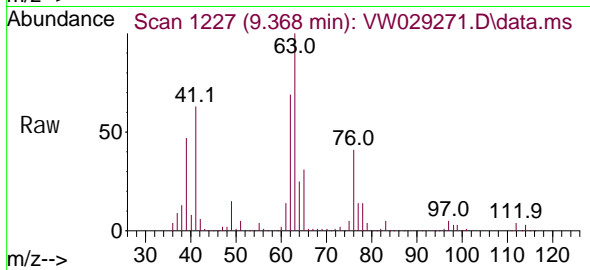


#37

1, 2-Di chl oropropane  
 Concen: 26.514 ug/L  
 RT: 9.368 min Scan# 1227  
 Delta R. T. 0.000 min  
 Lab File: VW029271.D  
 Acq: 20 Jun 2024 21:19

Instrument :  
 MSVOA\_W  
 ClientSampleId :

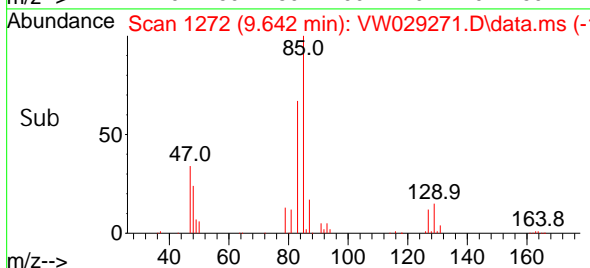
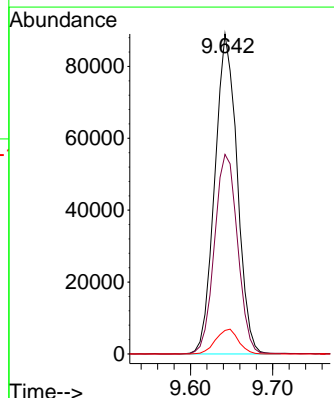
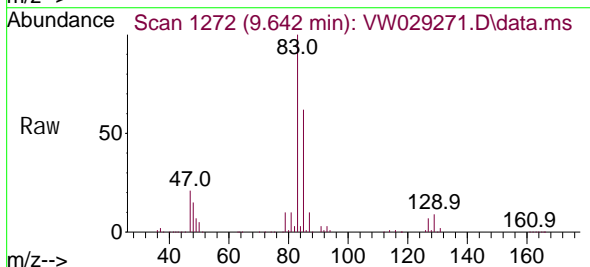
Tgt Ion: 63 Resp: 145827  
 Ion Ratio Lower Upper  
 63 100  
 112 4.1 3.8 5.6

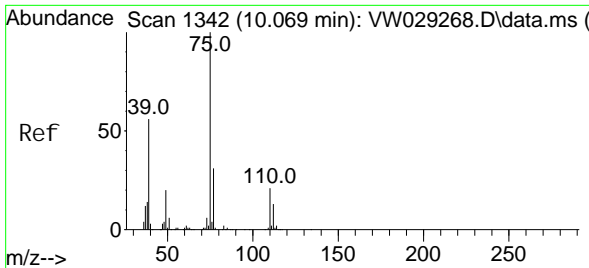


#38

Bromodi chl oromethane  
 Concen: 25.089 ug/L  
 RT: 9.642 min Scan# 1272  
 Delta R. T. 0.000 min  
 Lab File: VW029271.D  
 Acq: 20 Jun 2024 21:19

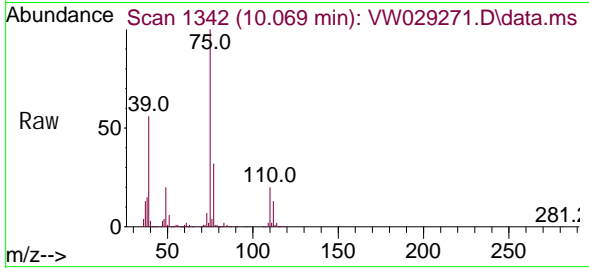
Tgt Ion: 83 Resp: 168714  
 Ion Ratio Lower Upper  
 83 100  
 85 62.4 45.1 83.9  
 127 7.3 5.8 8.6



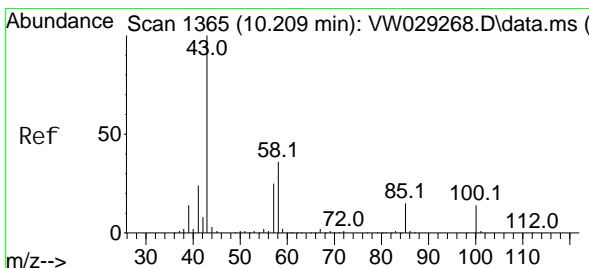
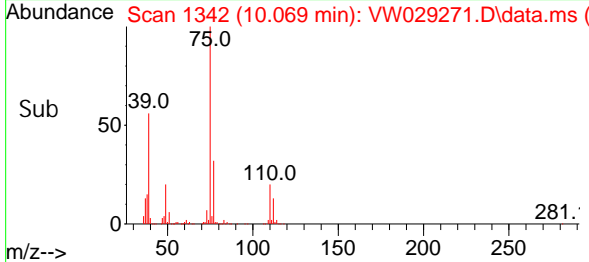
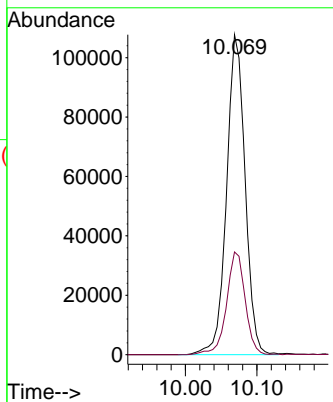


#39  
 cis-1,3-Dichloropropene  
 Concen: 24.935 ug/L  
 RT: 10.069 min Scan# 1342  
 Delta R.T. 0.000 min  
 Lab File: VW029271.D  
 Acq: 20 Jun 2024 21:19

Instrument : MSVOA\_W  
 ClientSampleId :

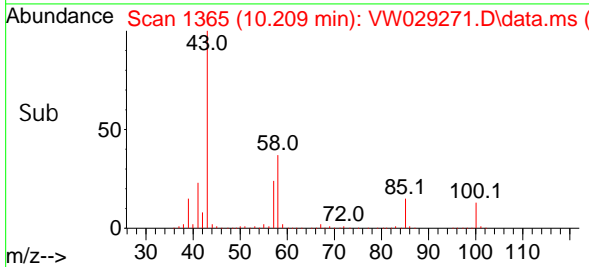
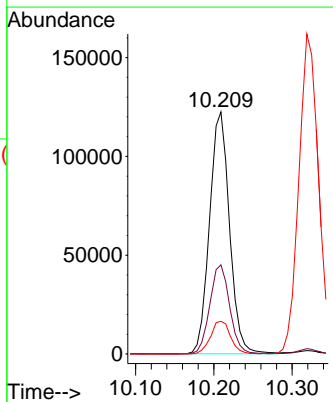
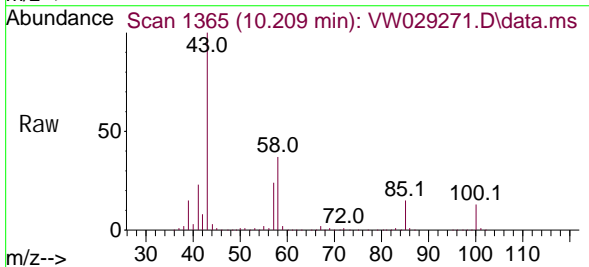


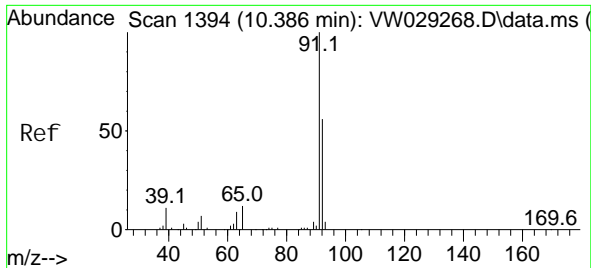
Tgt Ion: 75 Resp: 193867  
 Ion Ratio Lower Upper  
 75 100  
 77 32.1 22.7 42.1



#40  
 4-Methyl-2-pentanone  
 Concen: 63.607 ug/L  
 RT: 10.209 min Scan# 1365  
 Delta R.T. 0.000 min  
 Lab File: VW029271.D  
 Acq: 20 Jun 2024 21:19

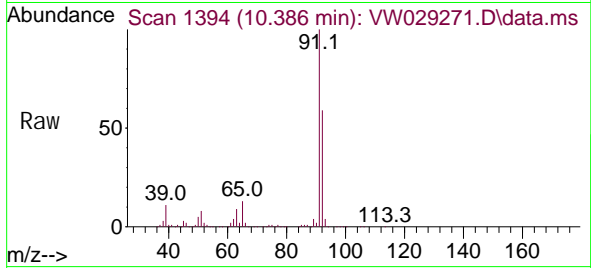
Tgt Ion: 43 Resp: 216837  
 Ion Ratio Lower Upper  
 43 100  
 58 36.7 28.2 42.4  
 100 13.6 11.0 16.4



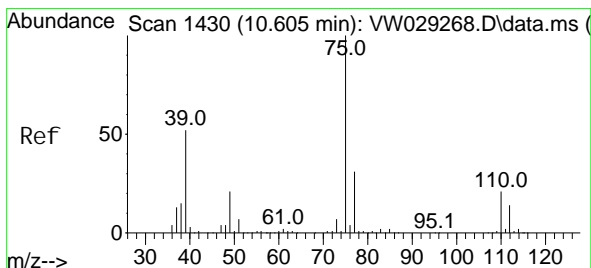
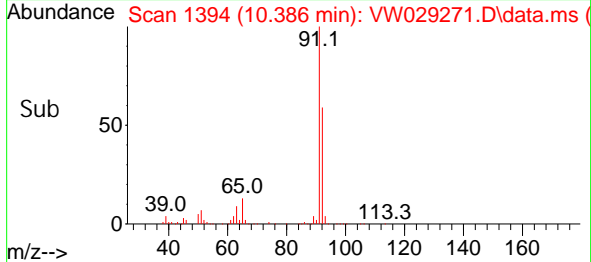
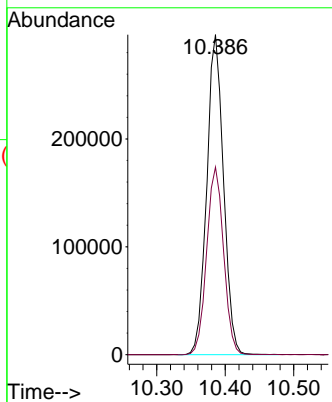


#42  
 Tol uene  
 Concen: 25.056 ug/L  
 RT: 10.386 min Scan# 1394  
 Delta R.T. 0.000 min  
 Lab File: VW029271.D  
 Acq: 20 Jun 2024 21:19

Instrument : MSVOA\_W  
 ClientSampleId :

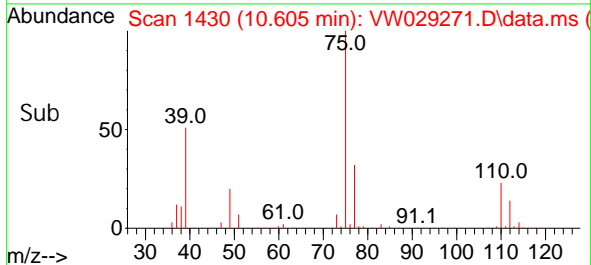
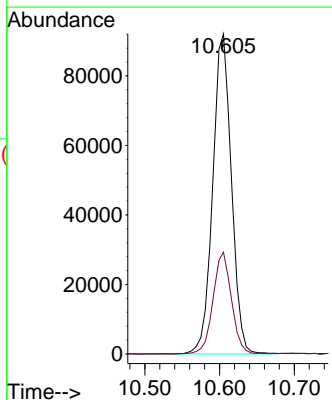
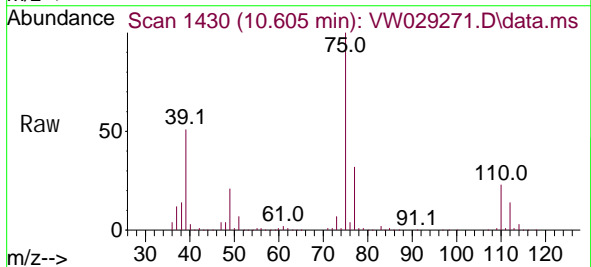


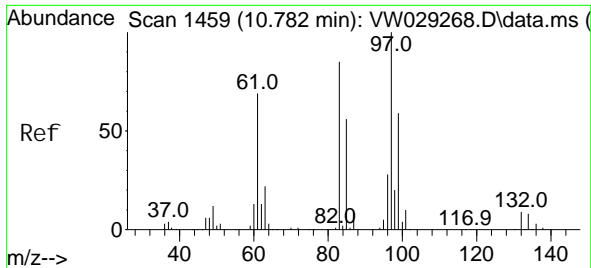
Tgt Ion: 91 Resp: 504183  
 Ion Ratio Lower Upper  
 91 100  
 92 58.6 39.3 73.1



#44  
 trans-1,3-Di chl oroprene  
 Concen: 24.401 ug/L  
 RT: 10.605 min Scan# 1430  
 Delta R.T. 0.000 min  
 Lab File: VW029271.D  
 Acq: 20 Jun 2024 21:19

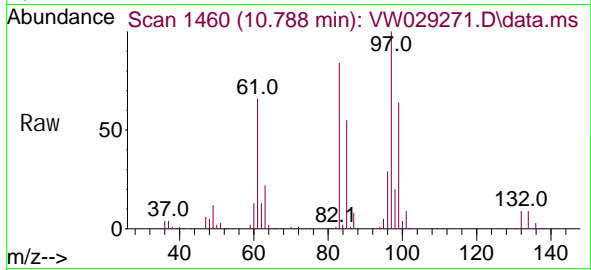
Tgt Ion: 75 Resp: 160188  
 Ion Ratio Lower Upper  
 75 100  
 77 31.8 22.7 42.1





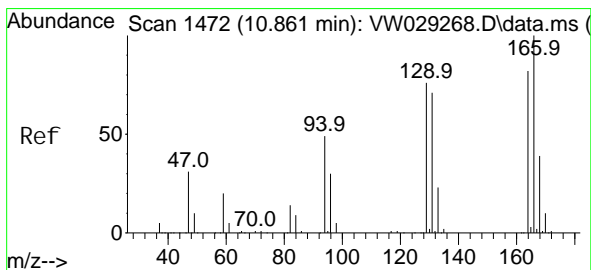
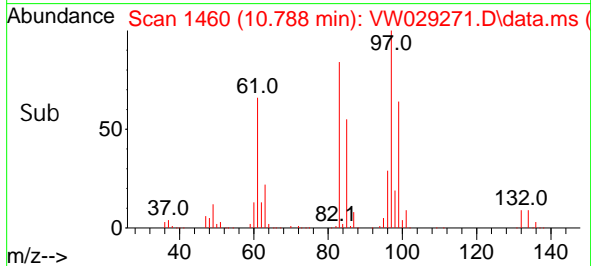
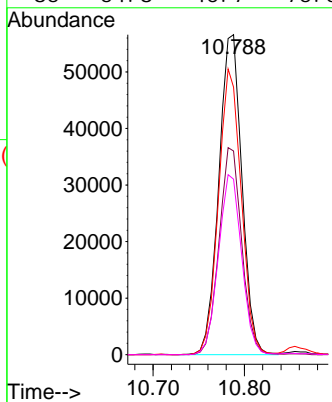
#45  
 1,1,2-Tri chloroethane  
 Concen: 26.013 ug/L  
 RT: 10.788 min Scan# 1459  
 Delta R.T. 0.006 min  
 Lab File: VW029271.D  
 Acq: 20 Jun 2024 21:19

Instrument :  
 MSVOA\_W  
 ClientSampleId :

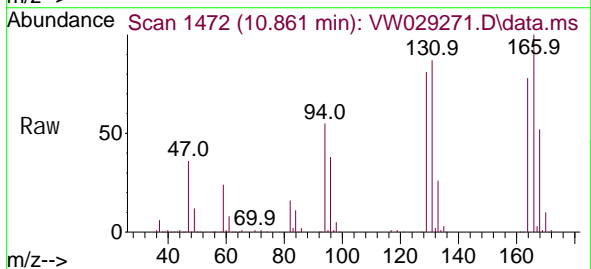


Tgt Ion: 97 Resp: 99644

Ion	Ratio	Lower	Upper
97	100		
99	63.6	42.3	78.5
83	83.6	57.7	107.1
85	54.8	40.7	75.5

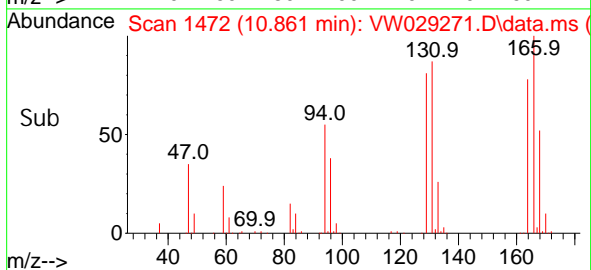
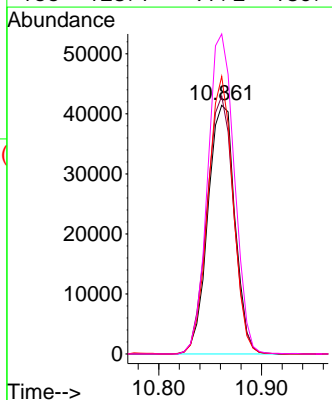


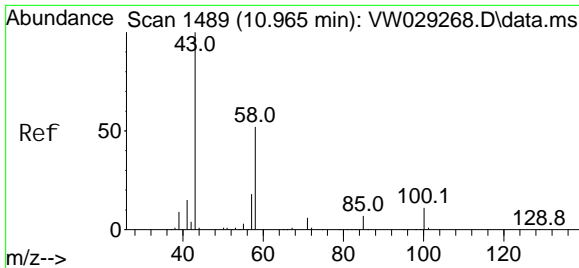
#46  
 Tetrachloroethene  
 Concen: 20.699 ug/L  
 RT: 10.861 min Scan# 1472  
 Delta R.T. 0.000 min  
 Lab File: VW029271.D  
 Acq: 20 Jun 2024 21:19



Tgt Ion: 164 Resp: 75560

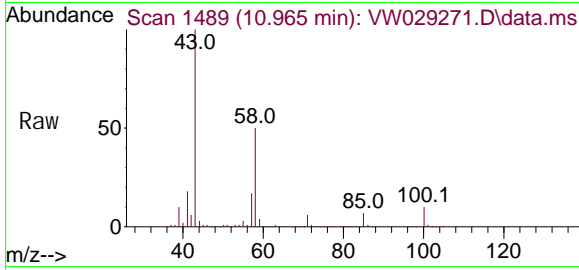
Ion	Ratio	Lower	Upper
164	100		
129	103.7	68.5	127.3
131	111.6	71.8	133.4
166	128.7	97.2	180.4





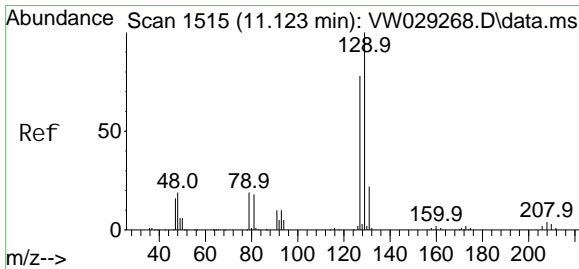
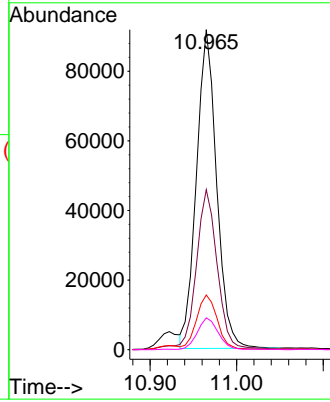
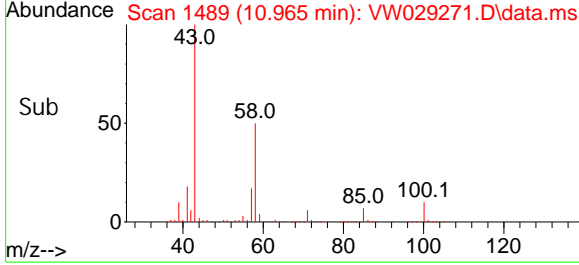
#48  
 2-Hexanone  
 Concen: 61.297 ug/L  
 RT: 10.965 min Scan# 1489  
 Delta R.T. 0.000 min  
 Lab File: VW029271.D  
 Acq: 20 Jun 2024 21:19

Instrument : MSVOA\_W  
 ClientSampleId :

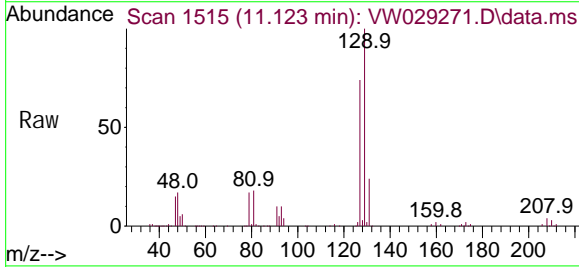


Tgt Ion: 43 Resp: 148273

Ion	Ratio	Lower	Upper
43	100		
58	52.9	39.6	59.4
57	17.7	14.6	21.8
100	10.3	8.2	12.2

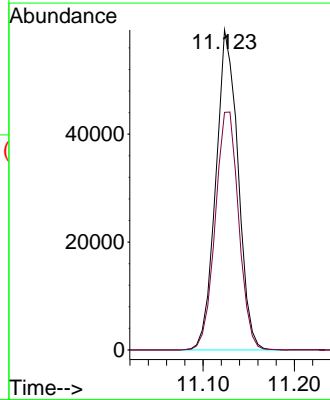
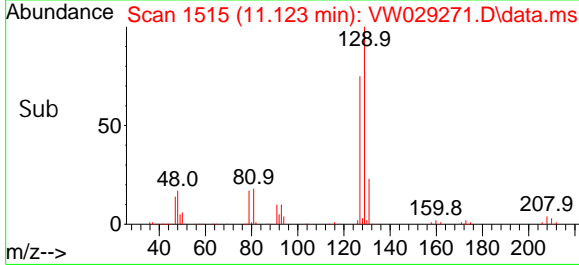


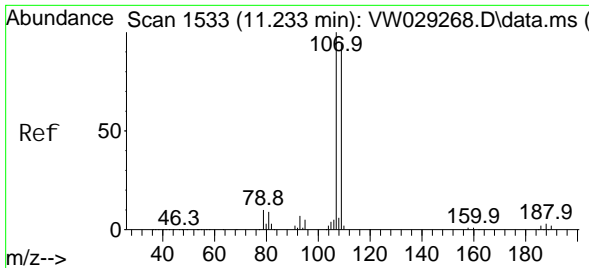
#49  
 Dibromochloromethane  
 Concen: 25.053 ug/L  
 RT: 11.123 min Scan# 1515  
 Delta R.T. 0.000 min  
 Lab File: VW029271.D  
 Acq: 20 Jun 2024 21:19



Tgt Ion: 129 Resp: 100319

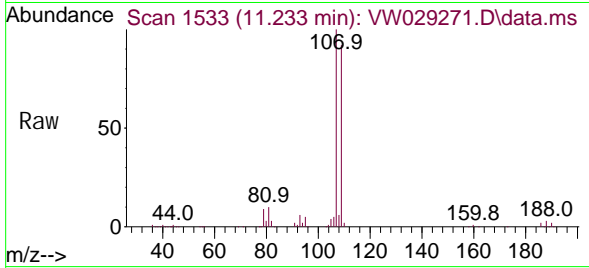
Ion	Ratio	Lower	Upper
129	100		
127	74.2	54.8	101.8



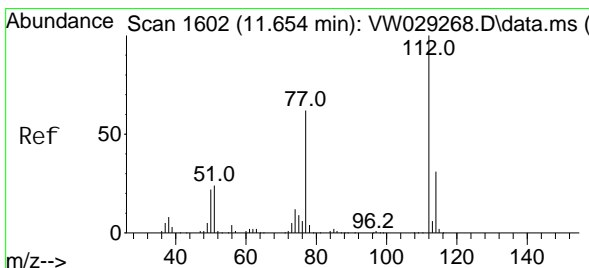
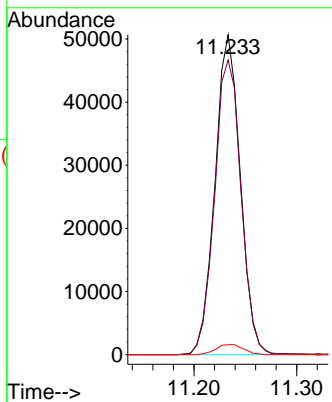
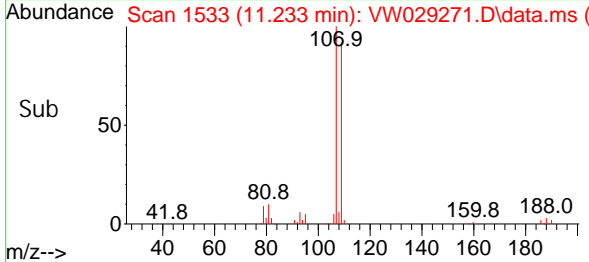


#50  
 1, 2-Di bromoethane  
 Concen: 25.249 ug/L  
 RT: 11.233 min Scan# 1533  
 Delta R.T. 0.000 min  
 Lab File: VW029271.D  
 Acq: 20 Jun 2024 21:19

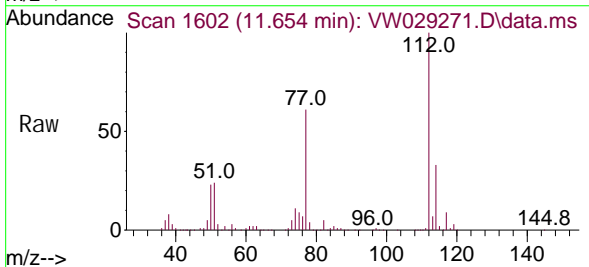
Instrument : MSVOA\_W  
 ClientSampleId :



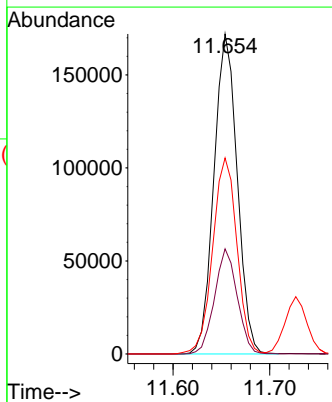
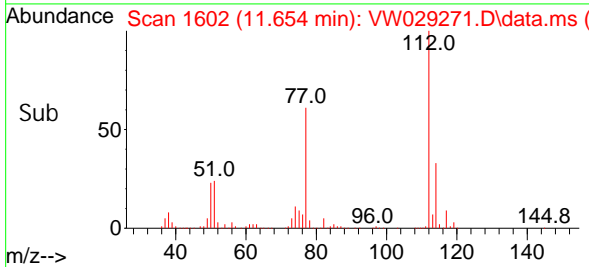
Tgt Ion: 107 Resp: 86821  
 Ion Ratio Lower Upper  
 107 100  
 109 92.0 65.5 121.6  
 188 3.1 2.6 4.0

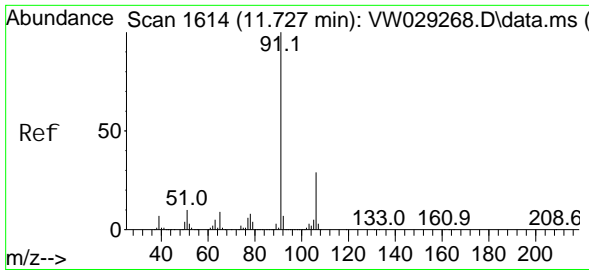


#51  
 Chlorobenzene  
 Concen: 22.018 ug/L  
 RT: 11.654 min Scan# 1602  
 Delta R.T. 0.000 min  
 Lab File: VW029271.D  
 Acq: 20 Jun 2024 21:19



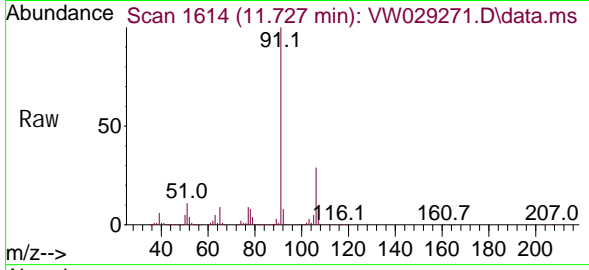
Tgt Ion: 112 Resp: 287704  
 Ion Ratio Lower Upper  
 112 100  
 114 32.8 22.6 42.0  
 77 61.3 51.0 76.6



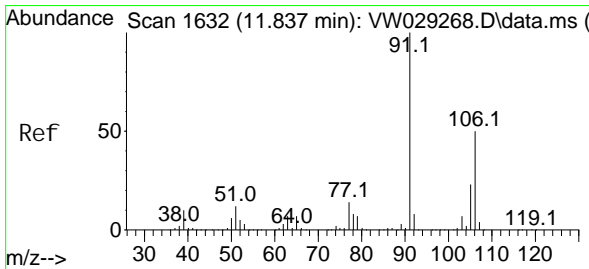
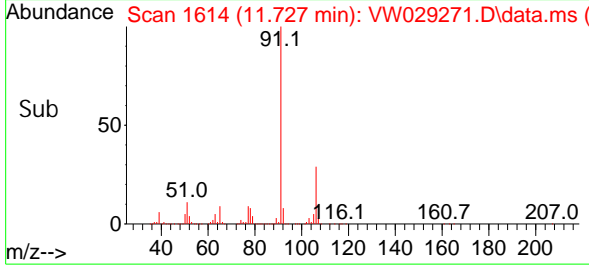
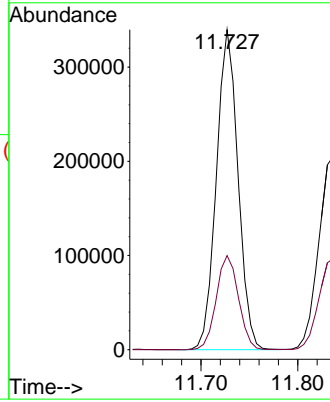


#52  
 Ethyl benzene  
 Concen: 23.059 ug/L  
 RT: 11.727 min Scan# 1614  
 Delta R.T. 0.000 min  
 Lab File: VW029271.D  
 Acq: 20 Jun 2024 21:19

Instrument :  
 MSVOA\_W  
 ClientSampleId :

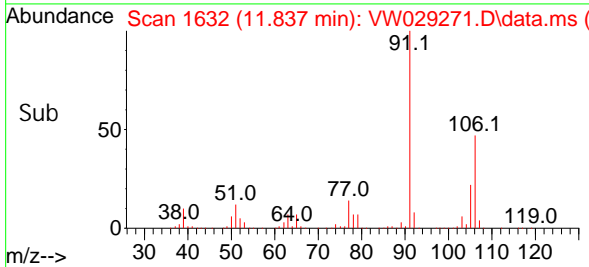
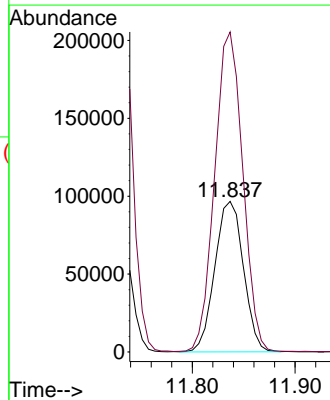
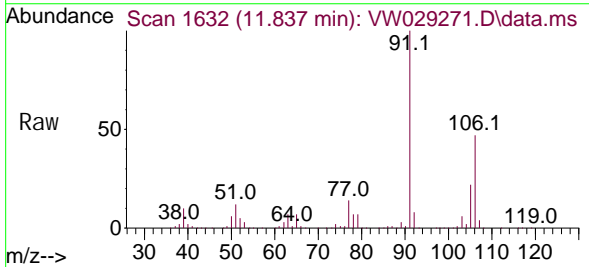


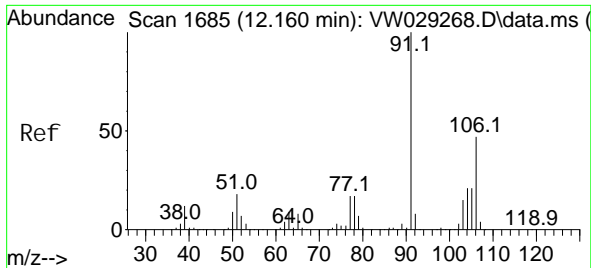
Tgt Ion: 91 Resp: 526692  
 Ion Ratio Lower Upper  
 91 100  
 106 29.4 19.9 37.0



#53  
 m, p-Xyl ene  
 Concen: 22.348 ug/L  
 RT: 11.837 min Scan# 1632  
 Delta R.T. 0.000 min  
 Lab File: VW029271.D  
 Acq: 20 Jun 2024 21:19

Tgt Ion: 106 Resp: 186453  
 Ion Ratio Lower Upper  
 106 100  
 91 212.5 140.5 260.9

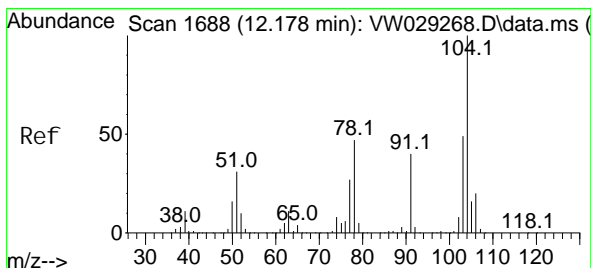
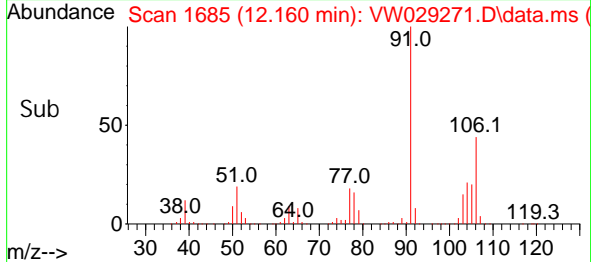
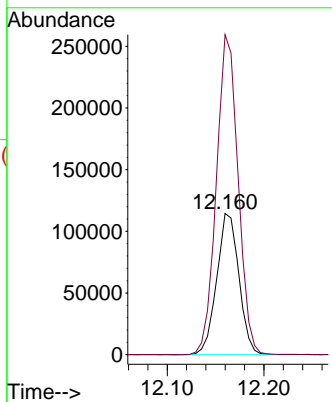
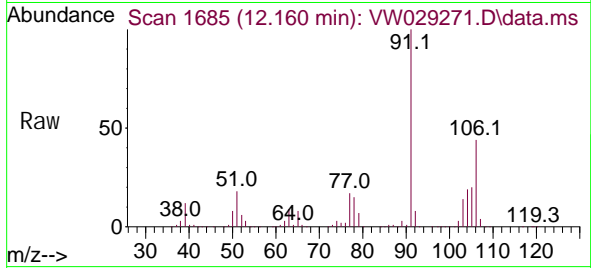




#54  
 o-Xyl ene  
 Concen: 23.344 ug/L  
 RT: 12.160 min Scan# 1685  
 Delta R.T. 0.000 min  
 Lab File: VW029271.D  
 Acq: 20 Jun 2024 21:19

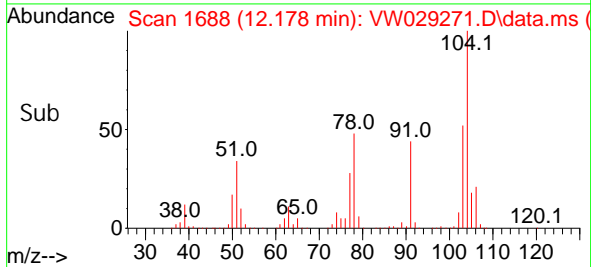
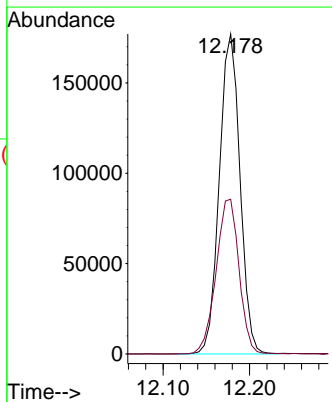
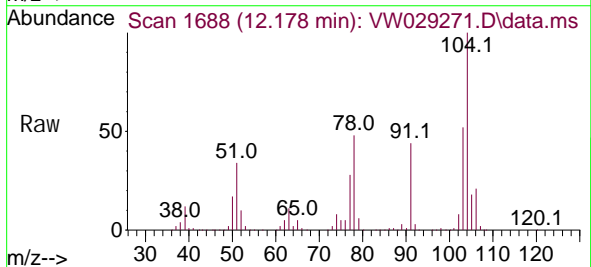
Instrument : MSVOA\_W  
 ClientSampleId :

Tgt Ion: 106 Resp: 182021  
 Ion Ratio Lower Upper  
 106 100  
 91 226.6 149.9 278.5

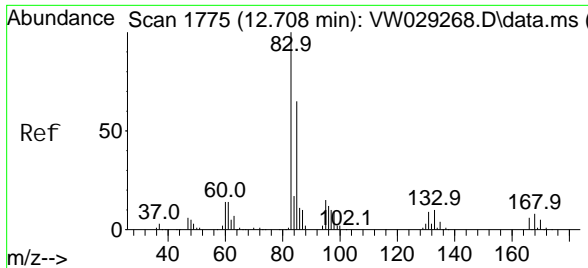


#55  
 Styrene  
 Concen: 21.589 ug/L  
 RT: 12.178 min Scan# 1688  
 Delta R.T. 0.000 min  
 Lab File: VW029271.D  
 Acq: 20 Jun 2024 21:19

Tgt Ion: 104 Resp: 293508  
 Ion Ratio Lower Upper  
 104 100  
 78 48.4 35.4 65.7

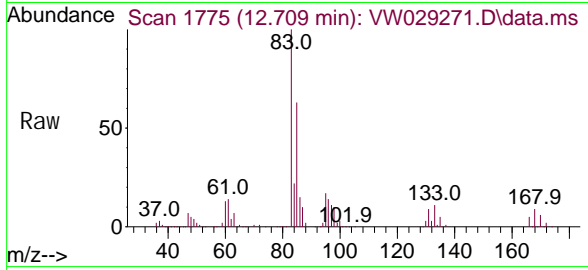




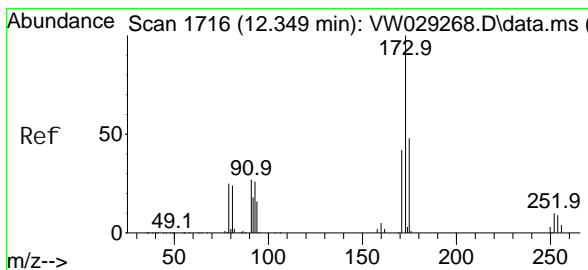
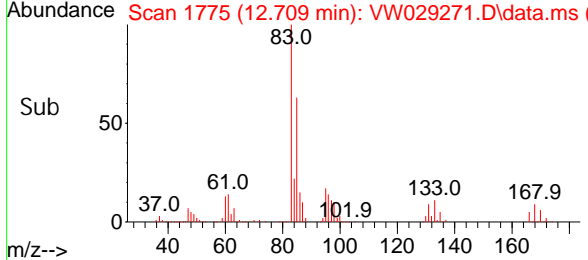
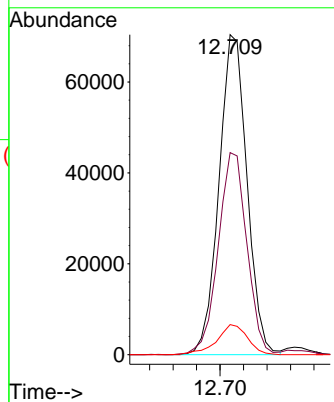


#57  
 1,1,2,2-Tetrachloroethane  
 Concen: 24.618 ug/L  
 RT: 12.709 min Scan# 1775  
 Delta R.T. 0.000 min  
 Lab File: VW029271.D  
 Acq: 20 Jun 2024 21:19

Instrument : MSVOA\_W  
 ClientSampleId :

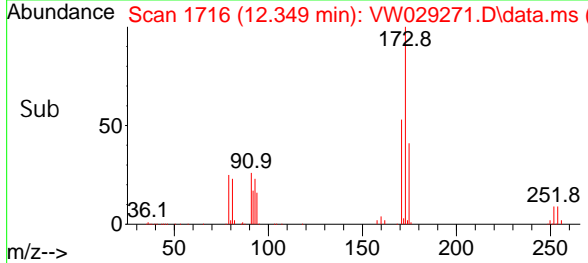
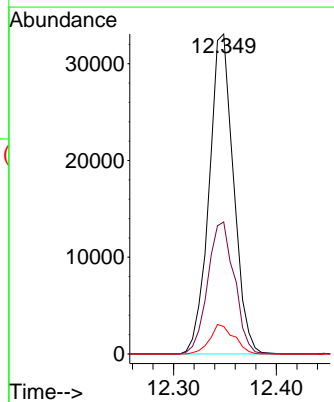
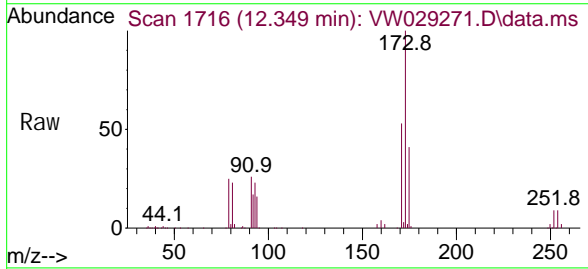


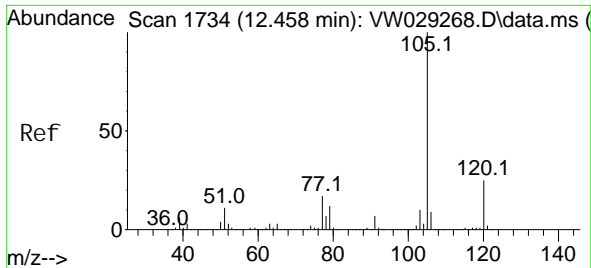
Tgt Ion: 83 Resp: 116650  
 Ion Ratio Lower Upper  
 83 100  
 85 63.2 45.8 85.0  
 131 9.4 7.8 11.6



#59  
 Bromoform  
 Concen: 35.066 ug/L  
 RT: 12.349 min Scan# 1716  
 Delta R.T. 0.000 min  
 Lab File: VW029271.D  
 Acq: 20 Jun 2024 21:19

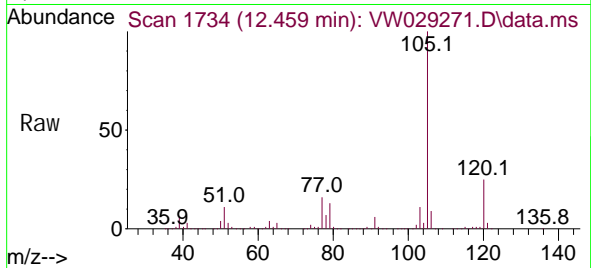
Tgt Ion: 173 Resp: 54623  
 Ion Ratio Lower Upper  
 173 100  
 175 45.0 37.8 56.8  
 254 9.1 7.8 11.6



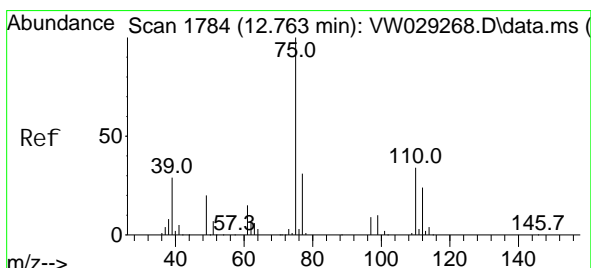
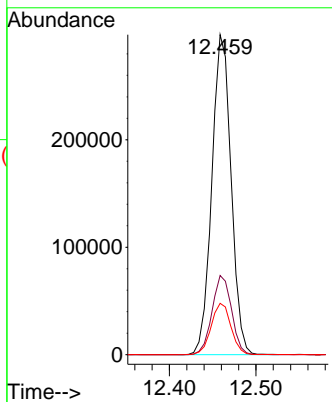
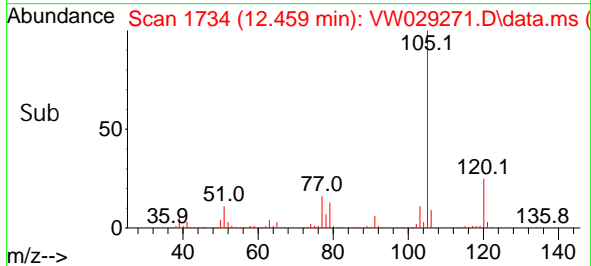


#60  
 Isopropyl benzene  
 Concen: 30.369 ug/L  
 RT: 12.459 min Scan# 1  
 Delta R.T. 0.000 min  
 Lab File: VW029271.D  
 Acq: 20 Jun 2024 21:19

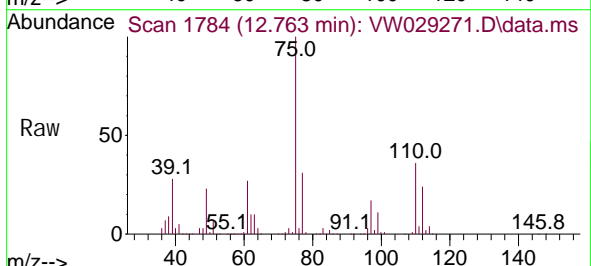
Instrument :  
 MSVOA\_W  
 ClientSampleId :



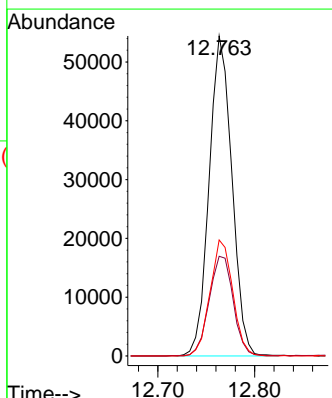
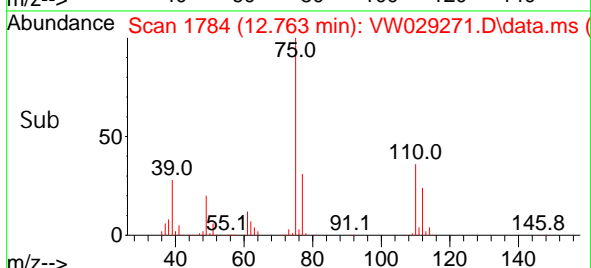
Tgt Ion: 105 Resp: 459921  
 Ion Ratio Lower Upper  
 105 100  
 120 25.0 20.5 30.7  
 77 16.5 13.6 20.4

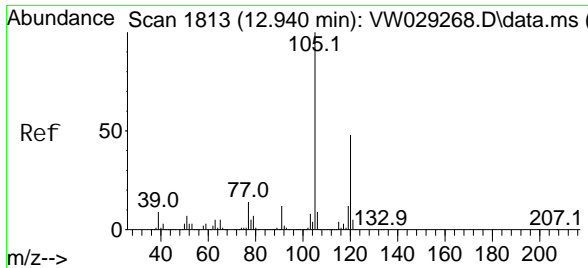


#61  
 1,2,3-Trichloropropane  
 Concen: 35.929 ug/L  
 RT: 12.763 min Scan# 1784  
 Delta R.T. 0.000 min  
 Lab File: VW029271.D  
 Acq: 20 Jun 2024 21:19



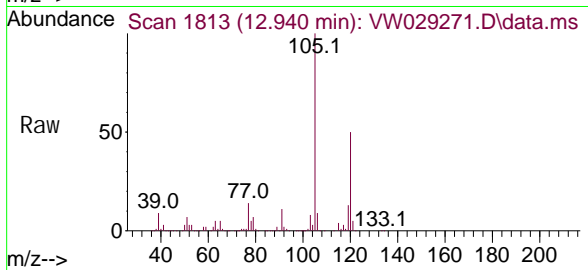
Tgt Ion: 75 Resp: 89069  
 Ion Ratio Lower Upper  
 75 100  
 77 32.6 26.6 39.8  
 110 36.1 29.5 44.3



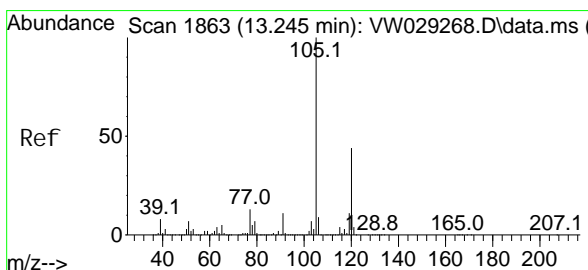
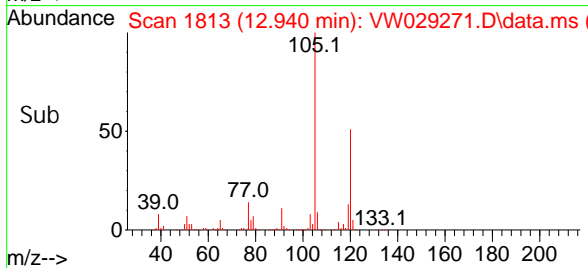
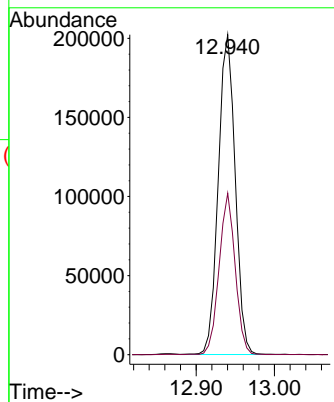


#62  
 1, 3, 5-Tri methyl benzene  
 Concen: 27.713 ug/L  
 RT: 12.940 min Scan# 1813  
 Delta R.T. 0.000 min  
 Lab File: VW029271.D  
 Acq: 20 Jun 2024 21:19

Instrument : MSVOA\_W  
 ClientSampleId :

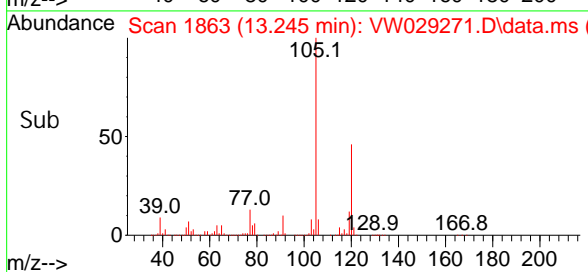
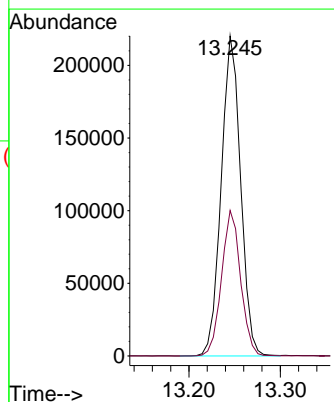
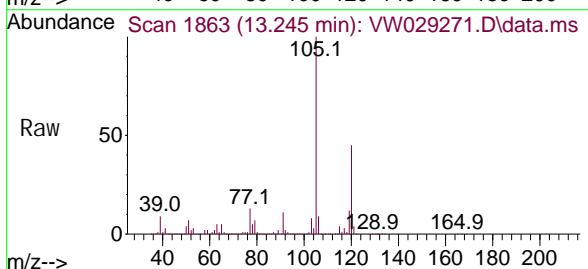


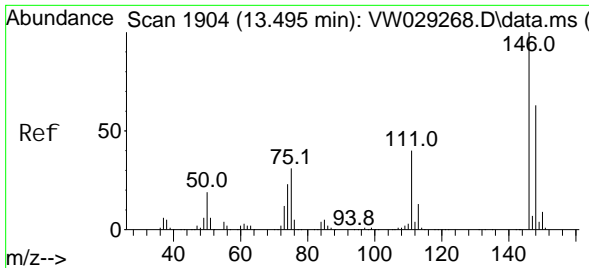
Tgt Ion: 105 Resp: 303953  
 Ion Ratio Lower Upper  
 105 100  
 120 48.0 36.4 54.6



#63  
 1, 2, 4-Tri methyl benzene  
 Concen: 27.565 ug/L  
 RT: 13.245 min Scan# 1863  
 Delta R.T. 0.000 min  
 Lab File: VW029271.D  
 Acq: 20 Jun 2024 21:19

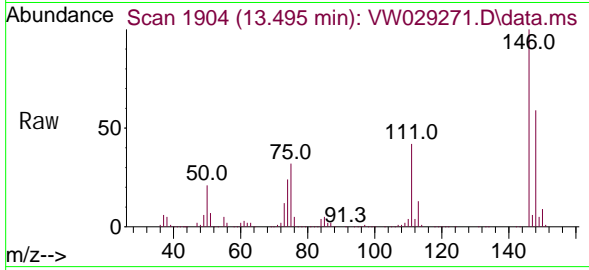
Tgt Ion: 105 Resp: 325288  
 Ion Ratio Lower Upper  
 105 100  
 120 44.7 34.9 52.3





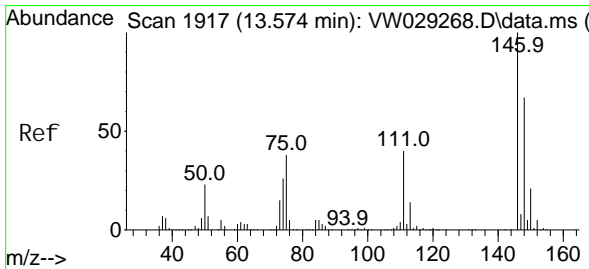
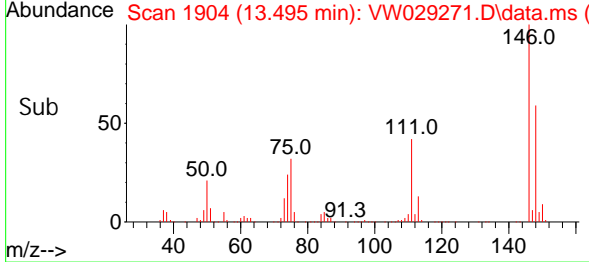
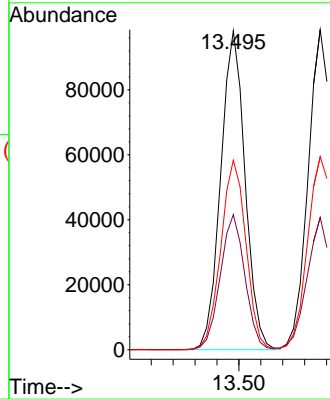
#64  
 1,3-Di chlorobenzene  
 Concen: 23.131 ug/L  
 RT: 13.495 min Scan# 1904  
 Delta R.T. 0.000 min  
 Lab File: VW029271.D  
 Acq: 20 Jun 2024 21:19

Instrument : MSVOA\_W  
 ClientSampleId :



Tgt Ion: 146 Resp: 151595

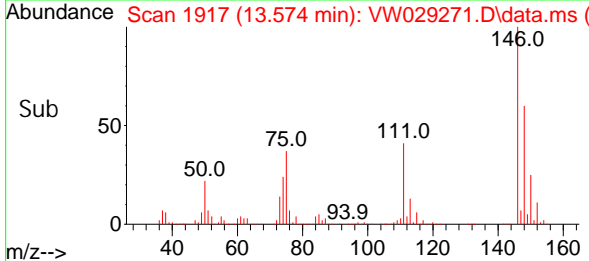
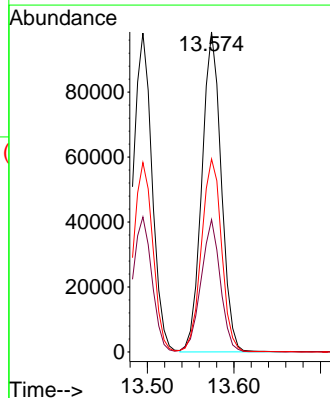
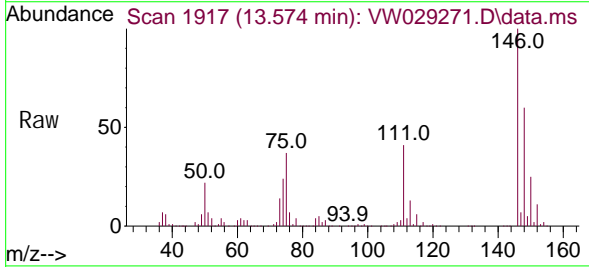
Ion	Ratio	Lower	Upper
146	100		
111	42.4	33.0	61.2
148	59.4	47.5	88.1

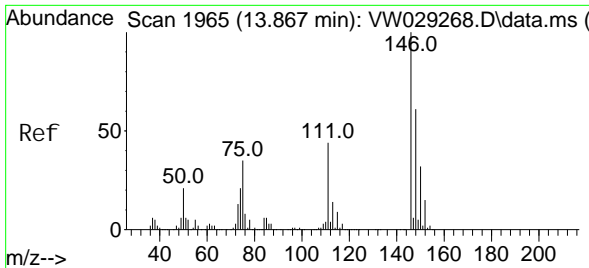


#65  
 1,4-Di chlorobenzene  
 Concen: 21.959 ug/L  
 RT: 13.574 min Scan# 1917  
 Delta R.T. 0.000 min  
 Lab File: VW029271.D  
 Acq: 20 Jun 2024 21:19

Tgt Ion: 146 Resp: 153118

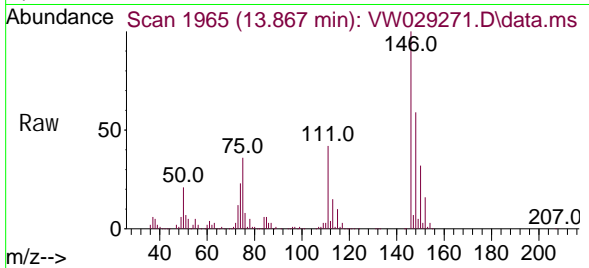
Ion	Ratio	Lower	Upper
146	100		
111	41.4	28.9	53.7
148	60.3	42.0	78.0



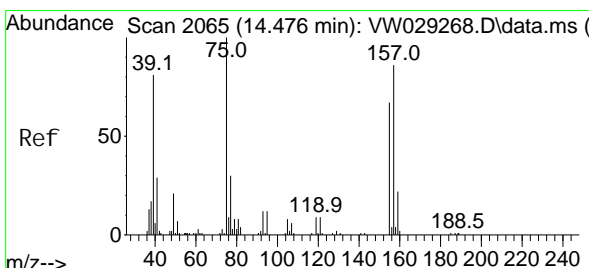
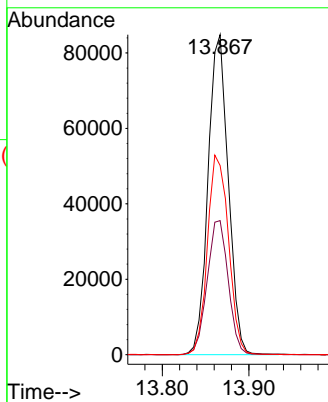
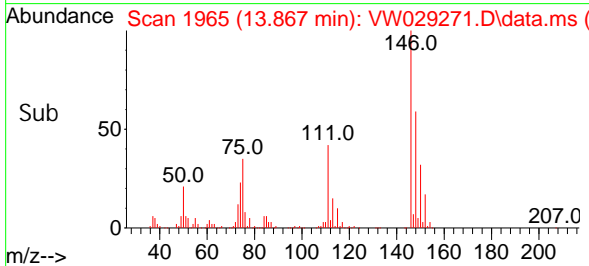


#67  
 1, 2-Di chl orobenzene  
 Concen: 22.684 ug/L  
 RT: 13.867 min Scan# 1965  
 Delta R.T. 0.000 min  
 Lab File: VW029271.D  
 Acq: 20 Jun 2024 21:19

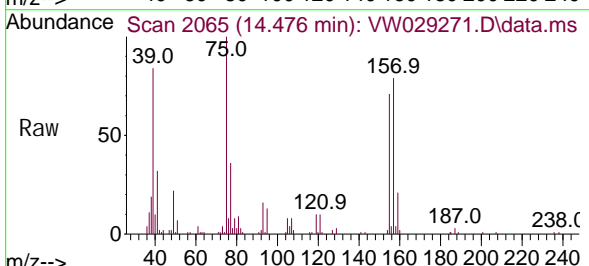
Instrument : MSVOA\_W  
 ClientSampleId :



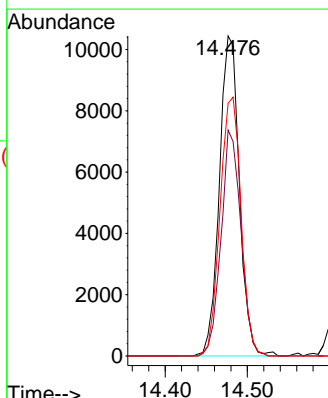
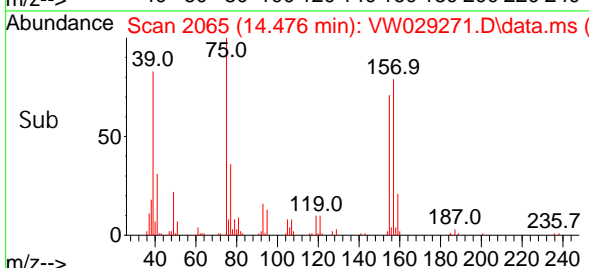
Tgt Ion: 146 Resp: 137438  
 Ion Ratio Lower Upper  
 146 100  
 111 41.9 34.2 51.4  
 148 59.1 46.3 69.5

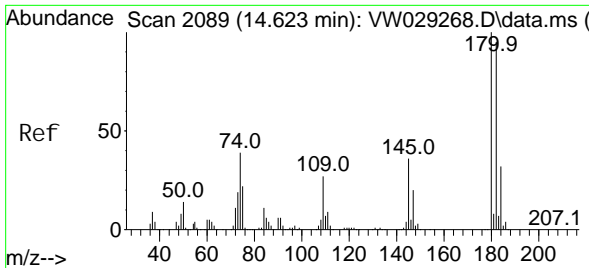


#68  
 1, 2-Di bromo-3- chl oropropane  
 Concen: 30.544 ug/L  
 RT: 14.476 min Scan# 2065  
 Delta R.T. 0.000 min  
 Lab File: VW029271.D  
 Acq: 20 Jun 2024 21:19



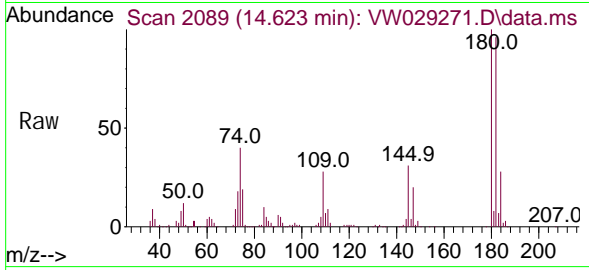
Tgt Ion: 75 Resp: 17670  
 Ion Ratio Lower Upper  
 75 100  
 155 70.6 51.0 76.6  
 157 78.9 58.8 88.2



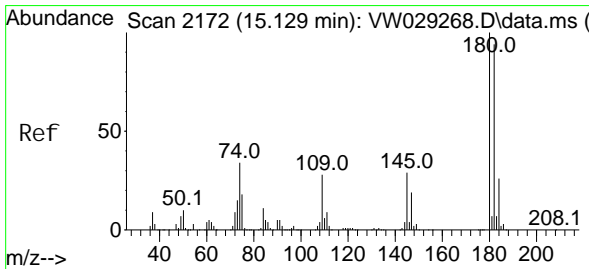
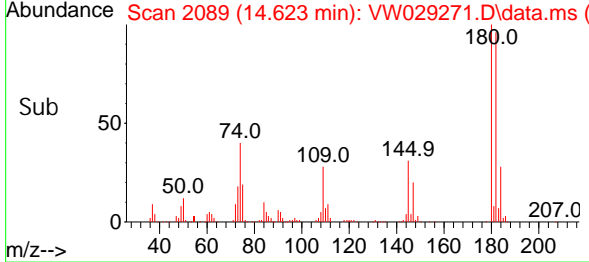
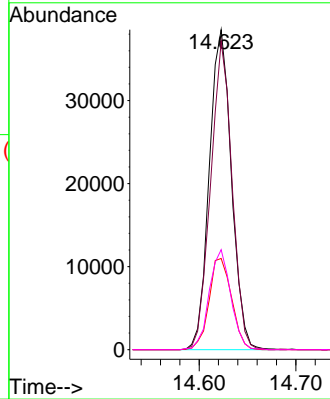


#69  
 1, 3, 5-Tri chlorobenzene  
 Concen: 13.875 ug/L  
 RT: 14.623 min Scan# 2089  
 Delta R.T. 0.000 min  
 Lab File: VW029271.D  
 Acq: 20 Jun 2024 21:19

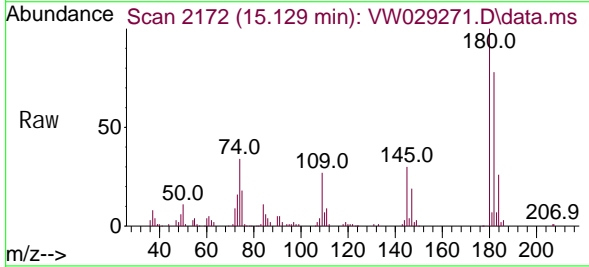
Instrument :  
 MSVOA\_W  
 ClientSampleId :



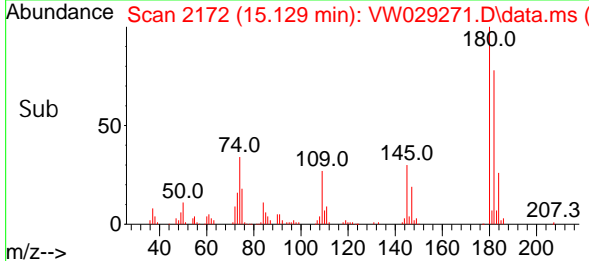
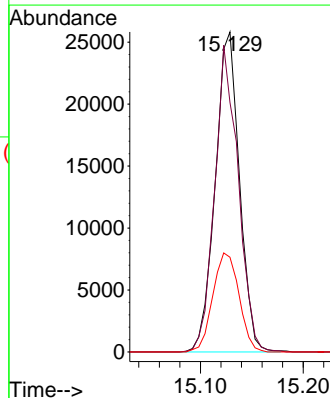
Tgt Ion: 180 Resp: 61372  
 Ion Ratio Lower Upper  
 180 100  
 182 92.8 72.9 109.3  
 184 29.1 23.8 35.6  
 145 30.5 25.9 38.9

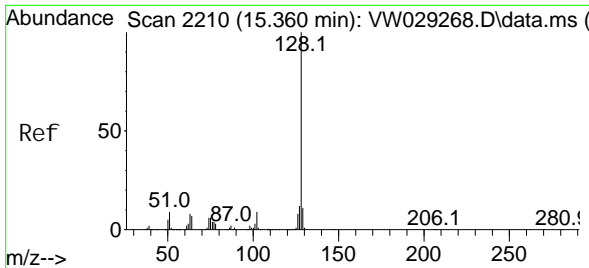


#70  
 1, 2, 4-tri chlorobenzene  
 Concen: 11.775 ug/L  
 RT: 15.129 min Scan# 2172  
 Delta R.T. 0.000 min  
 Lab File: VW029271.D  
 Acq: 20 Jun 2024 21:19



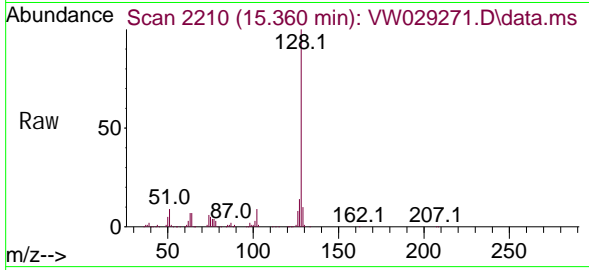
Tgt Ion: 180 Resp: 42220  
 Ion Ratio Lower Upper  
 180 100  
 182 93.4 77.7 116.5  
 145 33.5 25.7 38.5



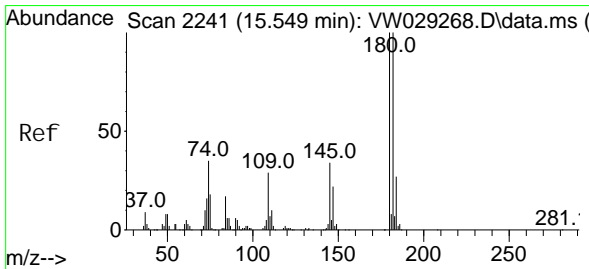
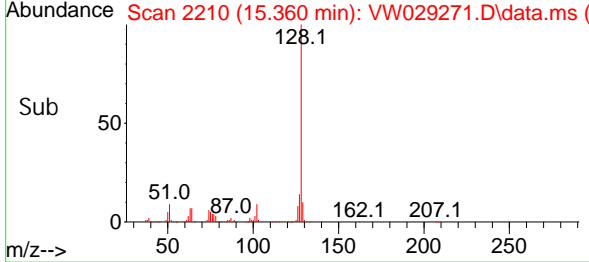
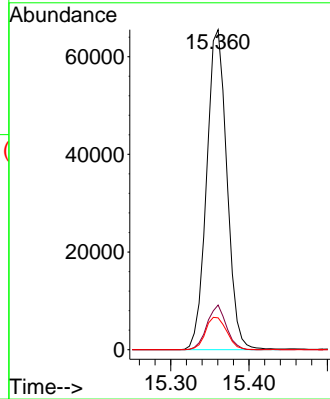


#71  
 Naphthalene  
 Concen: 16.638 ug/L  
 RT: 15.360 min Scan# 211  
 Delta R.T. 0.000 min  
 Lab File: VW029271.D  
 Acq: 20 Jun 2024 21:19

Instrument :  
 MSVOA\_W  
 ClientSampleId :



Tgt Ion: 128 Resp: 117741  
 Ion Ratio Lower Upper  
 128 100  
 127 13.2 10.3 15.5  
 129 10.6 8.9 13.3



#72  
 1,2,3-Trichlorobenzene  
 Concen: 10.750 ug/L  
 RT: 15.543 min Scan# 2240  
 Delta R.T. -0.006 min  
 Lab File: VW029271.D  
 Acq: 20 Jun 2024 21:19

Tgt Ion: 180 Resp: 35121  
 Ion Ratio Lower Upper  
 180 100  
 182 94.3 73.0 109.6  
 145 34.9 28.1 42.1

