

Data Path : Z:\VOASRV\HPCHEM1\MSVOA W\DATA\VW062218\
 Data File : VW003434.D
 Acq On : 22 Jun 2018 18:47
 Operator : SY/AP
 Sample : J3621-19
 Misc : 4.23G/10ML/MSVOA W/SOIL
 ALS Vial : 1 Sample Multiplier: 1

Instrument :
 MSVOA_W
 ClientSampleId :
 DAZ93

Integration Parameters: LSCINT.P

Integrator: RTE
 Smoothing : OFF
 Sampling : 1
 Start Thrs: 0.2
 Stop Thrs : 0

Filtering: 5
 Min Area: 0 % of largest Peak
 Max Peaks: 100
 Peak Location: TOP

If leading or trailing edge < 100 prefer < Baseline drop else tangent >
 Peak separation: 5

Method : Z:\VOASRV\HPCHEM1\MSVOA_W\METHOD\SOM2WLM062018S.M
 Title : VOC Analysis

Signal : TIC

peak #	R.T. min	first scan	max scan	last scan	PK TY	peak height	corr. area	corr. % max.	% of total
1	1.746	15	26	27	rBV	9749	15255	0.03%	0.010%
2	1.807	27	36	58	rVV	8779557	18316255	31.55%	12.533%
3	2.154	87	93	116	rBV	60115	206853	0.36%	0.142%
4	2.343	117	124	135	rVB2	70990	171434	0.30%	0.117%
5	2.892	207	214	226	rVB	50064	126674	0.22%	0.087%
6	4.007	387	397	410	rBV	90996	285792	0.49%	0.196%
7	4.148	413	420	435	rVB2	12990	45443	0.08%	0.031%
8	4.349	449	453	454	rBV2	964	794	0.00%	0.001%
9	4.605	493	495	498	rVB2	529	452	0.00%	0.000%
10	4.635	498	500	503	rBV3	425	469	0.00%	0.000%
11	4.733	511	516	517	rBV3	402	490	0.00%	0.000%
12	4.910	536	545	556	rBV6	5039	19331	0.03%	0.013%
13	5.251	598	601	603	rVB2	608	673	0.00%	0.000%
14	5.336	613	615	621	rVB	556	878	0.00%	0.001%
15	5.410	626	627	629	rBV	547	510	0.00%	0.000%
16	5.483	636	639	641	rVB2	479	538	0.00%	0.000%
17	5.501	641	642	645	rBV	558	455	0.00%	0.000%
18	5.782	686	688	690	rBV2	562	541	0.00%	0.000%
19	5.934	702	713	722	rBV4	8402	26356	0.05%	0.018%
20	6.214	753	759	770	rVV4	2028	5568	0.01%	0.004%
21	6.434	792	795	797	rBV	391	489	0.00%	0.000%
22	6.531	808	811	814	rBV2	324	534	0.00%	0.000%
23	6.903	869	872	875	rBV3	409	495	0.00%	0.000%
24	6.958	878	881	883	rBV3	656	494	0.00%	0.000%
25	7.092	894	903	916	rBV	30399	91711	0.16%	0.063%
26	7.385	946	951	957	rVB2	309	560	0.00%	0.000%
27	7.519	970	973	974	rBV2	648	653	0.00%	0.000%
28	7.653	984	995	1006	rBV	171869	418011	0.72%	0.286%
29	7.879	1023	1032	1039	rBV2	6397	15542	0.03%	0.011%
30	8.153	1074	1077	1080	rVB2	691	709	0.00%	0.000%
31	8.281	1087	1098	1112	rVV2	298546	875583	1.51%	0.599%
32	8.403	1115	1118	1122	rVB3	605	1013	0.00%	0.001%
33	8.543	1138	1141	1147	rBV4	279	600	0.00%	0.000%
34	8.702	1160	1167	1168	rBV6	1053	1897	0.00%	0.001%

Data Path : Z:\VOASRV\HPCHEM1\MSVOA W\DATA\VW062218\
 Data File : VW003434.D
 Acq On : 22 Jun 2018 18:47
 Operator : SY/AP
 Sample : J3621-19
 Misc : 4.23G/10ML/MSVOA W/SOIL
 ALS Vial : 1 Sample Multiplier: 1

Instrument :
 MSVOA_W
 ClientSampleId :
 DAZ93

Integration Parameters: LSCINT.P

Integrator: RTE
 Smoothing : OFF
 Sampling : 1
 Start Thrs: 0.2
 Stop Thrs : 0

Filtering: 5
 Min Area: 0 % of largest Peak
 Max Peaks: 100
 Peak Location: TOP

If leading or trailing edge < 100 prefer < Baseline drop else tangent >
 Peak separation: 5

Method : Z:\VOASRV\HPCHEM1\MSVOA_W\METHOD\SOM2WLM062018S.M
 Title : VOC Analysis

35	8.848	1183	1191	1202	rVV	269596	530706	0.91%	0.363%
36	9.092	1222	1231	1237	rVB7	1830	4413	0.01%	0.003%
37	9.141	1237	1239	1243	rVB	480	437	0.00%	0.000%
38	9.281	1252	1262	1271	rBV	233129	485840	0.84%	0.332%
39	9.531	1302	1303	1307	rVB2	526	520	0.00%	0.000%
40	9.598	1310	1314	1315	rBV2	391	444	0.00%	0.000%
41	9.665	1319	1325	1326	rBV2	786	1129	0.00%	0.001%
42	9.872	1353	1359	1361	rBV2	396	753	0.00%	0.001%
43	9.915	1361	1366	1371	rBV4	1801	2798	0.00%	0.002%
44	10.037	1380	1386	1394	rBV	69543	124350	0.21%	0.085%
45	10.147	1402	1404	1407	rVB3	611	506	0.00%	0.000%
46	10.214	1411	1415	1420	rBV3	2319	3966	0.01%	0.003%
47	10.329	1425	1434	1441	rBV	366210	643910	1.11%	0.441%
48	10.390	1441	1444	1449	rVB2	7015	12212	0.02%	0.008%
49	10.506	1458	1463	1467	rBV4	1363	2543	0.00%	0.002%
50	10.579	1469	1475	1484	rVB	33182	57658	0.10%	0.039%
51	10.714	1492	1497	1501	rVB3	1531	2519	0.00%	0.002%
52	10.775	1501	1507	1509	rBV6	488	790	0.00%	0.001%
53	10.860	1517	1521	1524	rVB4	1369	1663	0.00%	0.001%
54	10.933	1524	1533	1543	rBV	103403	179300	0.31%	0.123%
55	11.073	1552	1556	1562	rVB7	982	1920	0.00%	0.001%
56	11.207	1569	1578	1588	rVB8	3951	9944	0.02%	0.007%
57	11.305	1590	1594	1597	rBV3	334	480	0.00%	0.000%
58	11.415	1609	1612	1614	rBV3	1142	1123	0.00%	0.001%
59	11.634	1640	1648	1657	rVB	286270	485171	0.84%	0.332%
60	11.738	1657	1665	1669	rBV7	2133	4298	0.01%	0.003%
61	11.829	1673	1680	1684	rBV5	6627	14840	0.03%	0.010%
62	11.951	1694	1700	1704	rVB7	2084	3597	0.01%	0.002%
63	12.116	1721	1727	1736	rBV5	7359	19209	0.03%	0.013%
64	12.213	1739	1743	1750	rVB8	3617	7407	0.01%	0.005%
65	12.372	1754	1769	1776	rBV	118412	246621	0.42%	0.169%
66	12.482	1776	1787	1800	rBV	36679360	58046056	100.00%	39.718%
67	12.622	1806	1810	1814	rBV3	5225	9867	0.02%	0.007%
68	12.725	1815	1827	1833	rBV2	1228182	2626567	4.52%	1.797%
69	12.780	1833	1836	1842	rVB2	75256	112188	0.19%	0.077%
70	12.872	1847	1851	1855	rBV5	10133	17234	0.03%	0.012%
71	12.933	1855	1861	1864	rBV	96648	171721	0.30%	0.117%

Data Path : Z:\VOASRV\HPCHEM1\MSVOA W\DATA\VW062218\
 Data File : VW003434.D
 Acq On : 22 Jun 2018 18:47
 Operator : SY/AP
 Sample : J3621-19
 Misc : 4.23G/10ML/MSVOA W/SOIL
 ALS Vial : 1 Sample Multiplier: 1

Instrument :
 MSVOA_W
 ClientSampleId :
 DAZ93

Integration Parameters: LSCINT.P

Integrator: RTE
 Smoothing : OFF
 Sampling : 1
 Start Thrs: 0.2
 Stop Thrs : 0

Filtering: 5
 Min Area: 0 % of largest Peak
 Max Peaks: 100
 Peak Location: TOP

If leading or trailing edge < 100 prefer < Baseline drop else tangent >
 Peak separation: 5

Method : Z:\VOASRV\HPCHEM1\MSVOA_W\METHOD\SOM2WLM062018S.M
 Title : VOC Analysis

72	12.969	1864	1867	1870	rVV4	69057	125927	0.22%	0.086%
73	13.036	1871	1878	1892	rVB	31806994	49518798	85.31%	33.883%
74	13.207	1901	1906	1911	rBV	153632	239593	0.41%	0.164%
75	13.256	1911	1914	1921	rVB2	49078	75842	0.13%	0.052%
76	13.372	1927	1933	1941	rBV	354638	548083	0.94%	0.375%
77	13.475	1941	1950	1951	rVV2	1407759	2449378	4.22%	1.676%
78	13.506	1952	1955	1961	rVV	4084624	6032343	10.39%	4.128%
79	13.567	1961	1965	1972	rVB	588398	887666	1.53%	0.607%
80	13.658	1977	1980	1985	rVV2	16512	25919	0.04%	0.018%
81	13.725	1985	1991	2000	rVB	59655	95342	0.16%	0.065%
82	13.859	2007	2013	2025	rVB	222418	377295	0.65%	0.258%
83	14.012	2031	2038	2041	rBV	75456	124546	0.21%	0.085%
84	14.054	2041	2045	2059	rVB2	121904	200457	0.35%	0.137%
85	14.164	2059	2063	2068	rBV2	13330	19533	0.03%	0.013%
86	14.341	2088	2092	2096	rVB7	4701	8479	0.01%	0.006%
87	14.445	2103	2109	2118	rVB	29800	54786	0.09%	0.037%
88	14.701	2146	2151	2157	rBV2	30581	53420	0.09%	0.037%
89	14.792	2162	2166	2167	rBV4	2569	3285	0.01%	0.002%
90	14.865	2172	2178	2184	rBV	347591	534099	0.92%	0.365%
91	15.024	2200	2204	2209	rBV4	11051	20530	0.04%	0.014%
92	15.079	2209	2213	2221	rVV2	38122	91524	0.16%	0.063%
93	15.176	2225	2229	2233	rVB3	27621	46692	0.08%	0.032%
94	15.268	2241	2244	2256	rVB7	16055	27564	0.05%	0.019%
95	15.518	2279	2285	2299	rVB5	14439	38977	0.07%	0.027%
96	15.816	2330	2334	2341	rBV9	3100	6935	0.01%	0.005%
97	15.944	2353	2355	2356	rBV2	892	537	0.00%	0.000%
98	16.011	2364	2366	2367	rBV2	1285	844	0.00%	0.001%
99	16.609	2457	2464	2473	rVB5	26418	59420	0.10%	0.041%
100	16.737	2479	2485	2492	rVB10	4432	11658	0.02%	0.008%

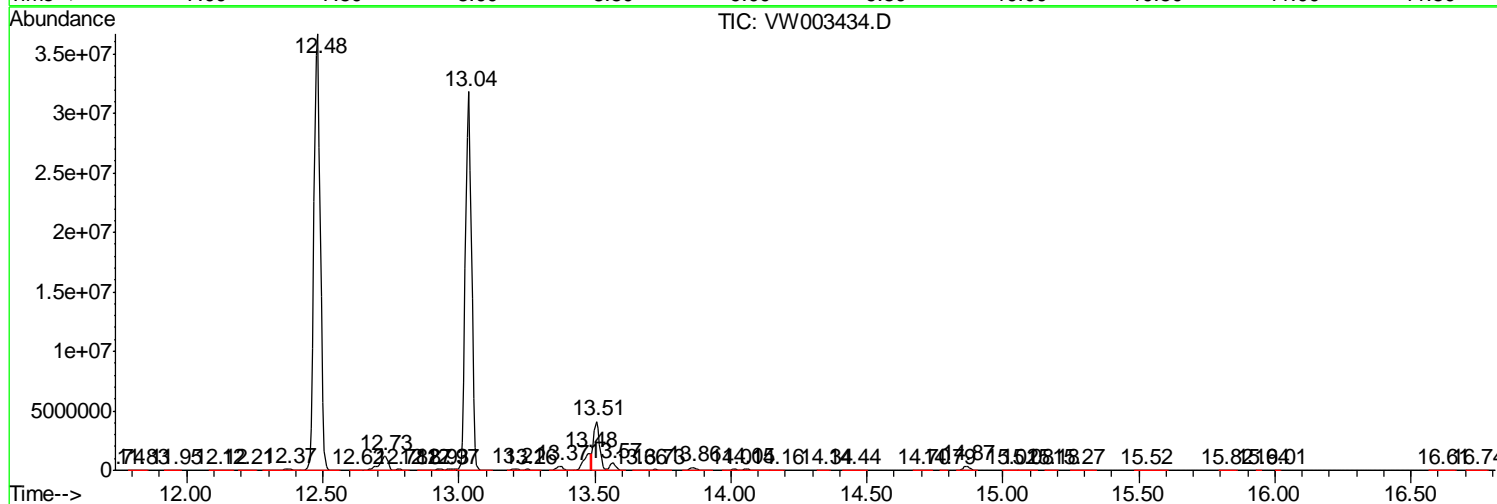
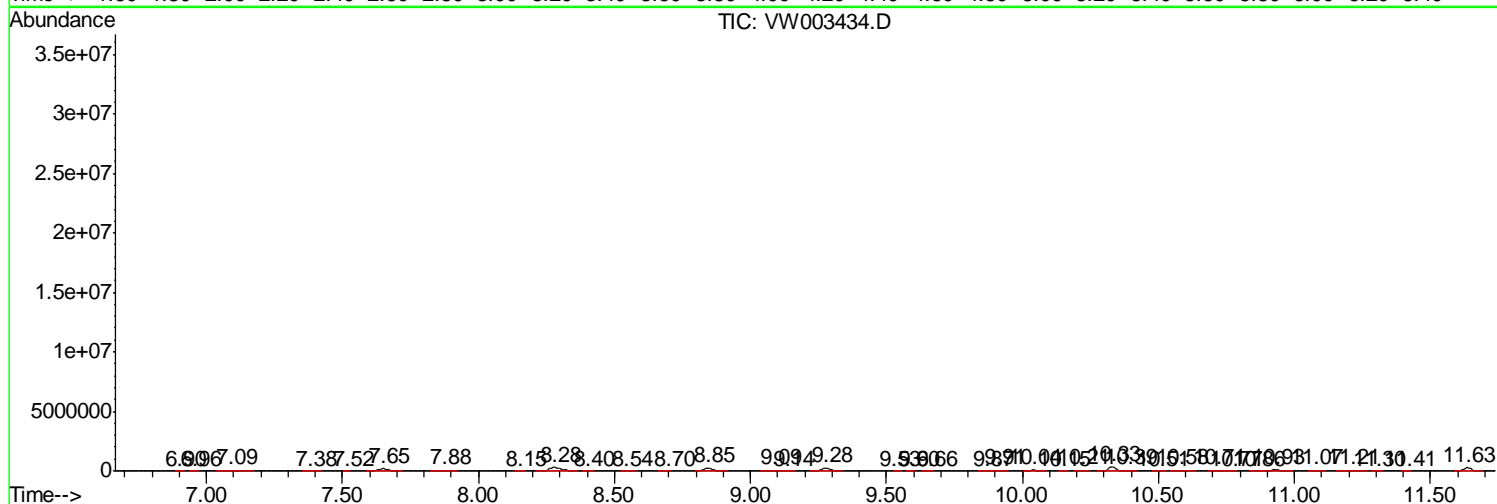
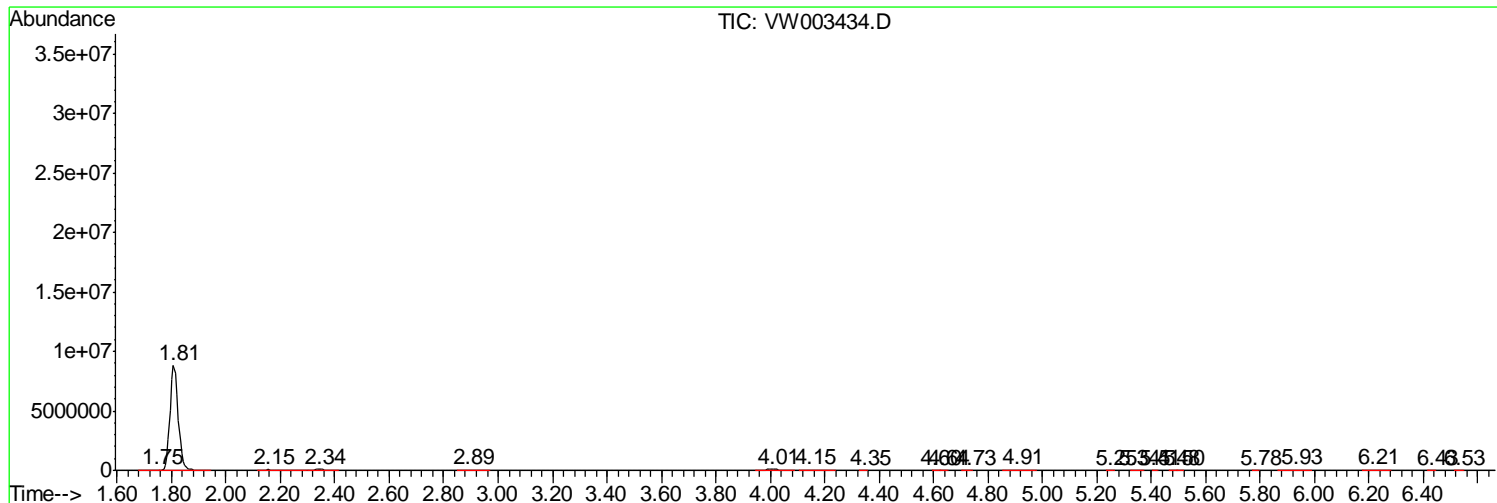
Sum of corrected areas: 146147224

Data Path : Z:\VOASRV\HPCHEM1\MSVOA W\DATA\VW062218\
 Data File : VW003434.D
 Acq On : 22 Jun 2018 18:47
 Operator : SY/AP
 Sample : J3621-19
 Misc : 4.23G/10ML/MSVOA W/SOIL
 ALS Vial : 1 Sample Multiplier: 1

Instrument :
 MSVOA_W
 ClientSampleId :
 DAZ93

Quant Method : Z:\VOASRV\HPCHEM1\MSVOA_W\METHOD\SOM2WLM062018S.M
 Quant Title : VOC Analysis

TIC Library : C:\DATABASE\NIST11.L
 TIC Integration Parameters: LSCINT.P



Data Path : Z:\VOASRV\HPCHEM1\MSVOA W\DATA\VW062218\
 Data File : VW003434.D
 Acq On : 22 Jun 2018 18:47
 Operator : SY/AP
 Sample : J3621-19
 Misc : 4.23G/10ML/MSVOA W/SOIL
 ALS Vial : 1 Sample Multiplier: 1

Instrument :
 MSVOA_W
 ClientSampled :
 DAZ93

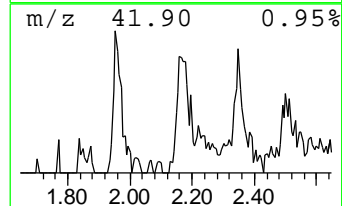
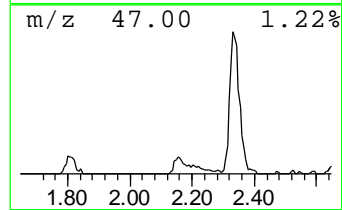
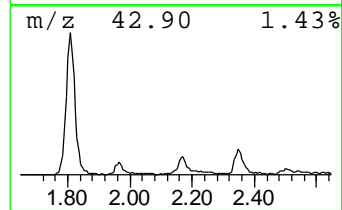
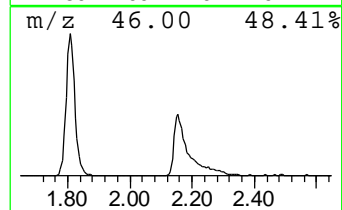
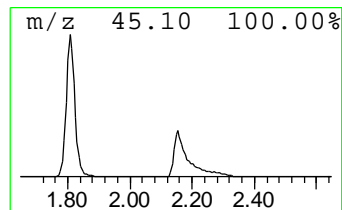
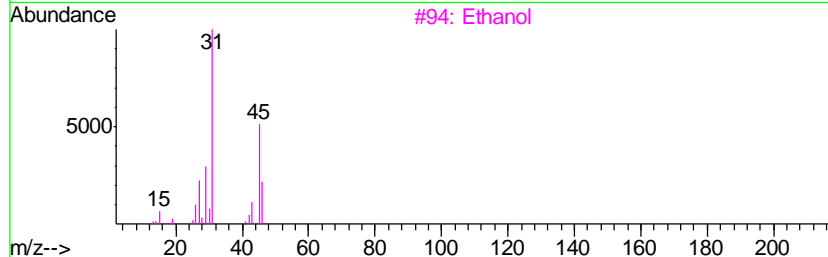
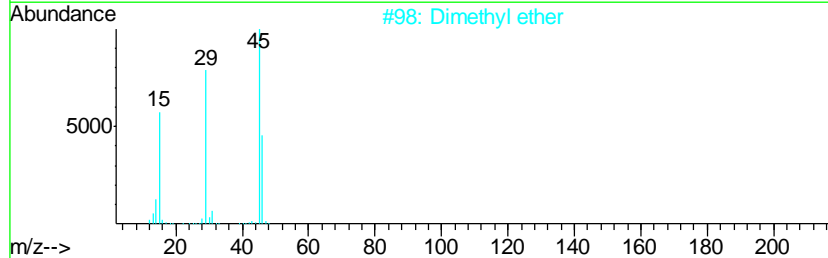
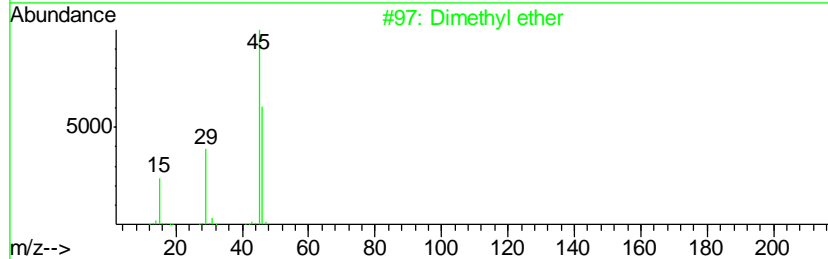
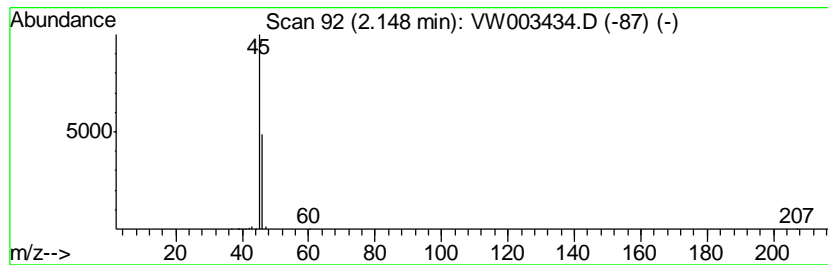
Quant Method : Z:\VOASRV\HPCHEM1\MSVOA_W\METHOD\SOM2WLM062018S.M
 Quant Title : VOC Analysis

TIC Library : C:\DATABASE\NIST11.L
 TIC Integration Parameters: LSCINT.P

 Peak Number 2 Dimethyl ether Concentration Rank 9

R.T.	EstConc	Area	Relative to ISTD	R.T.
2.15	9.74 ug/L	206853	1,4-Difluorobenzene	8.85

Hit#	of	Tentative ID	MW	MolForm	CAS#	Qual
1	5	Dimethyl ether	46	C2H6O	000115-10-6	64
2		Dimethyl ether	46	C2H6O	000115-10-6	64
3		Ethanol	46	C2H6O	000064-17-5	7
4		Formic acid	46	CH2O2	000064-18-6	5
5		Oxalic acid	90	C2H2O4	000144-62-7	4



Data Path : Z:\VOASRV\HPCHEM1\MSVOA W\DATA\VW062218\
 Data File : VW003434.D
 Acq On : 22 Jun 2018 18:47
 Operator : SY/AP
 Sample : J3621-19
 Misc : 4.23G/10ML/MSVOA W/SOIL
 ALS Vial : 1 Sample Multiplier: 1

Instrument :
 MSVOA_W
 ClientSampled :
 DAZ93

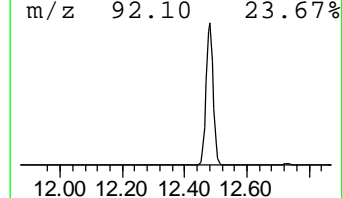
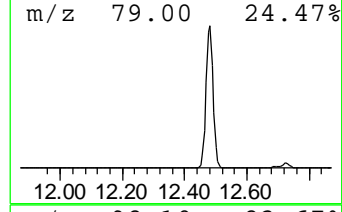
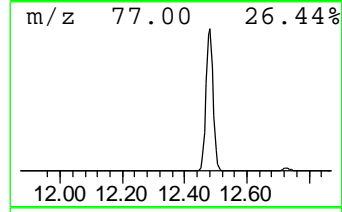
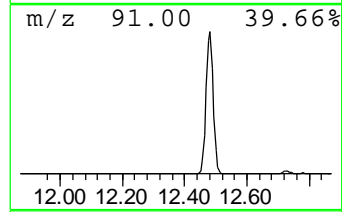
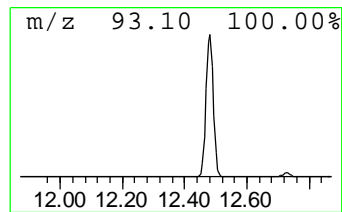
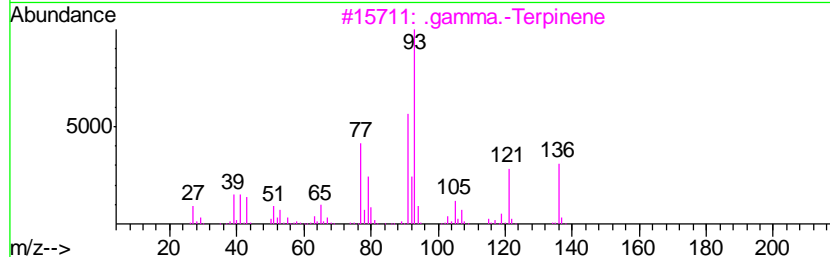
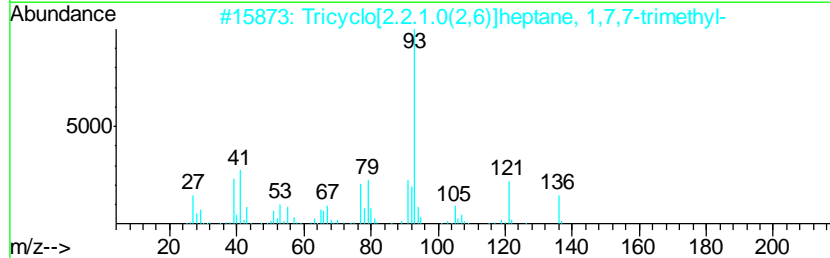
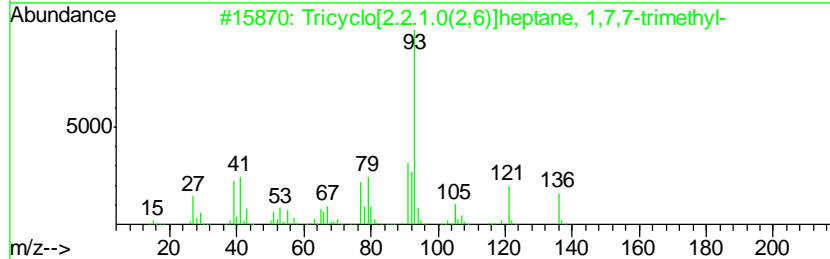
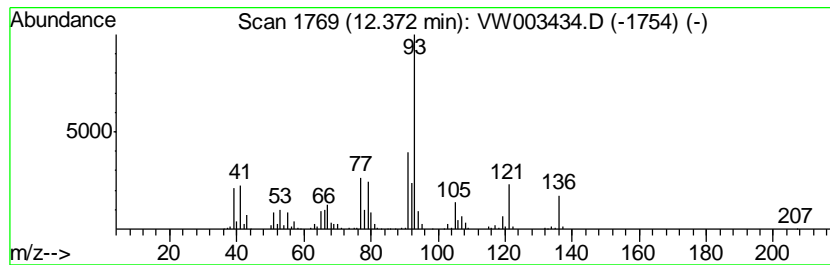
Quant Method : Z:\VOASRV\HPCHEM1\MSVOA_W\METHOD\SOM2WLM062018S.M
 Quant Title : VOC Analysis

TIC Library : C:\DATABASE\NIST11.L
 TIC Integration Parameters: LSCINT.P

 Peak Number 4 Tricyclo[2.2.1.0(2,6)]hepta... Concentration Rank 8

R.T.	EstConc	Area	Relative to ISTD	R.T.
12.37	12.71 ug/L	246621	Chlorobenzene-d5	11.63

Hit#	of	Tentative ID	MW	MolForm	CAS#	Qual
1	5	Tricyclo[2.2.1.0(2,6)]heptane, 1...	136	C10H16	000508-32-7	96
2		Tricyclo[2.2.1.0(2,6)]heptane, 1...	136	C10H16	000508-32-7	94
3		.gamma.-Terpinene	136	C10H16	000099-85-4	94
4		3-Carene	136	C10H16	013466-78-9	94
5		Tricyclo[2.2.1.0(2,6)]heptane, 1...	136	C10H16	000508-32-7	94



Data Path : Z:\VOASRV\HPCHEM1\MSVOA W\DATA\VW062218\
 Data File : VW003434.D
 Acq On : 22 Jun 2018 18:47
 Operator : SY/AP
 Sample : J3621-19
 Misc : 4.23G/10ML/MSVOA W/SOIL
 ALS Vial : 1 Sample Multiplier: 1

Instrument :
 MSVOA_W
 ClientSampleID :
 DAZ93

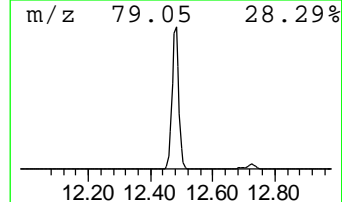
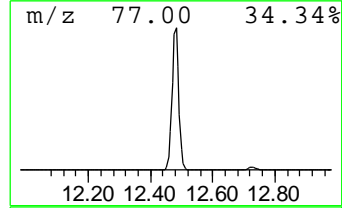
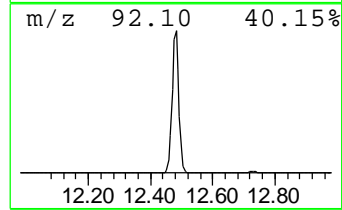
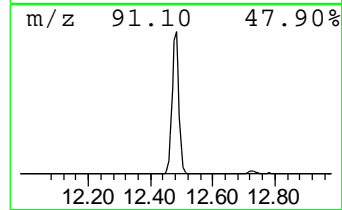
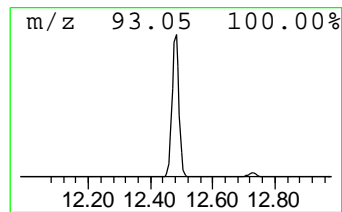
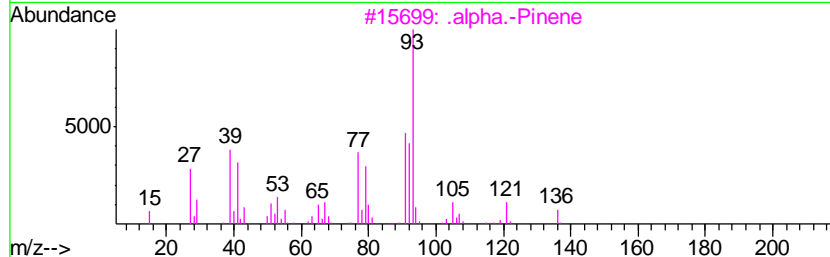
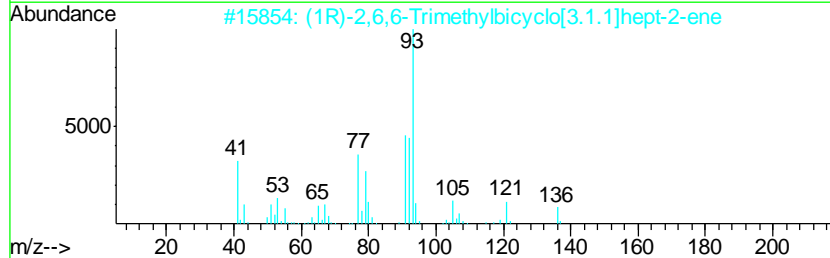
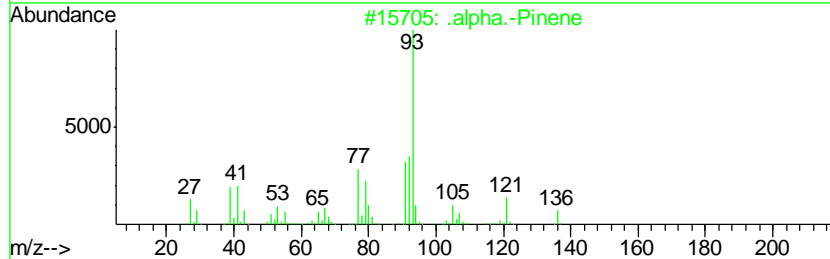
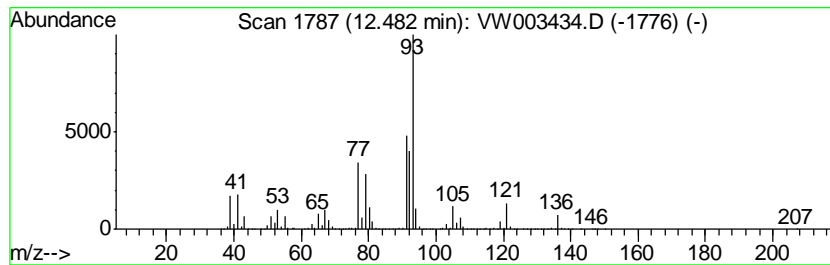
Quant Method : Z:\VOASRV\HPCHEM1\MSVOA_W\METHOD\SOM2WLM062018S.M
 Quant Title : VOC Analysis

TIC Library : C:\DATABASE\NIST11.L
 TIC Integration Parameters: LSCINT.P

 Peak Number 5 .alpha.-Pinene Concentration Rank 1

R.T.	EstConc	Area	Relative to ISTD	R.T.
12.48	2991.01 ug/L	58046100	Chlorobenzene-d5	11.63

Hit#	of	Tentative ID	MW	MolForm	CAS#	Qual
1	5	.alpha.-Pinene	136	C10H16	000080-56-8	96
2		(1R)-2,6,6-Trimethylbicyclo[3.1....	136	C10H16	007785-70-8	95
3		.alpha.-Pinene	136	C10H16	000080-56-8	95
4		(1R)-2,6,6-Trimethylbicyclo[3.1....	136	C10H16	007785-70-8	94
5		Bicyclo[3.1.1]heptane, 6,6-dimet...	136	C10H16	018172-67-3	93



Data Path : Z:\VOASRV\HPCHEM1\MSVOA W\DATA\VW062218\
 Data File : VW003434.D
 Acq On : 22 Jun 2018 18:47
 Operator : SY/AP
 Sample : J3621-19
 Misc : 4.23G/10ML/MSVOA W/SOIL
 ALS Vial : 1 Sample Multiplier: 1

Instrument :
 MSVOA_W
 ClientSampleID :
 DAZ93

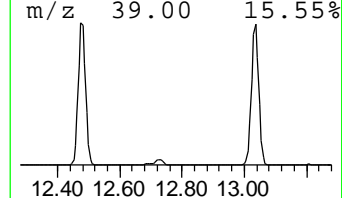
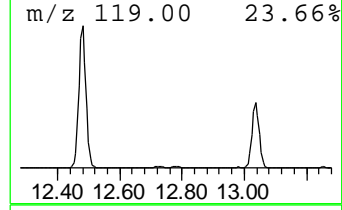
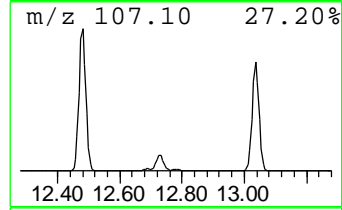
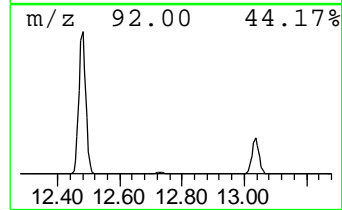
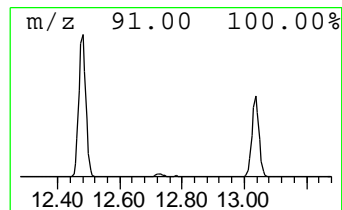
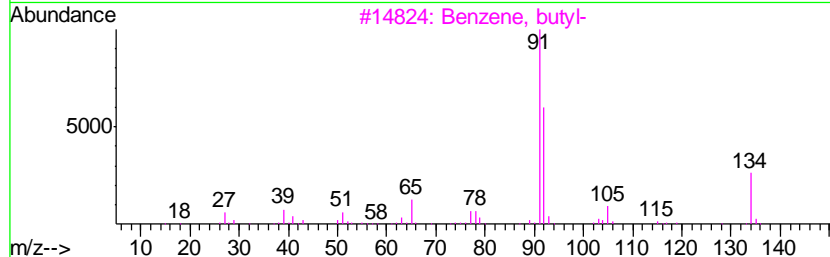
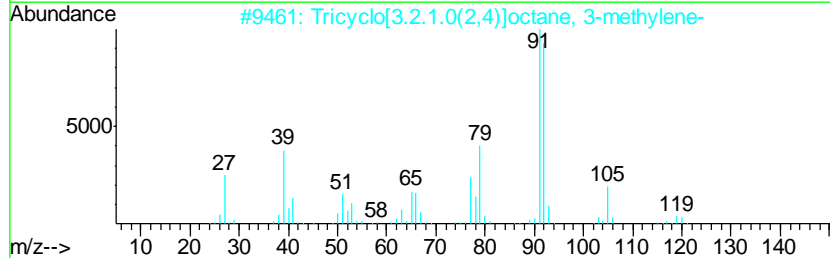
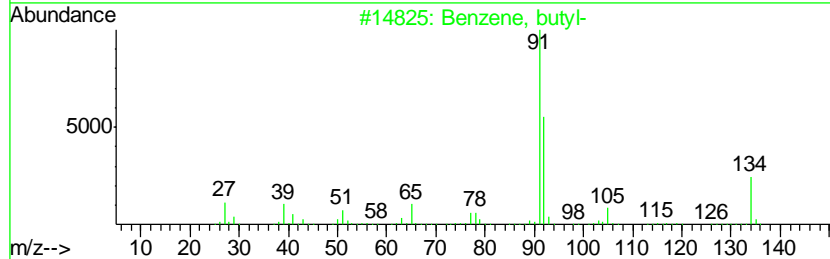
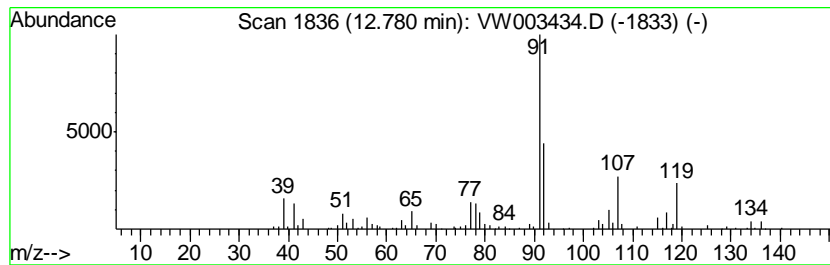
Quant Method : Z:\VOASRV\HPCHEM1\MSVOA_W\METHOD\SOM2WLM062018S.M
 Quant Title : VOC Analysis

TIC Library : C:\DATABASE\NIST11.L
 TIC Integration Parameters: LSCINT.P

 Peak Number 6 unknown-01 Concentration Rank 16

R.T.	EstConc	Area	Relative to ISTD	R.T.
12.78	3.16 ug/L	112188	1,4-Dichlorobenzene-d4	13.57

Hit#	of	Tentative ID	MW	MolForm	CAS#	Qual
1	5	Benzene, butyl-	134	C10H14	000104-51-8	43
2		Tricyclo[3.2.1.0(2,4)]octane, 3-...	120	C9H12	1000150-04-5	38
3		Benzene, butyl-	134	C10H14	000104-51-8	38
4		Benzene, butyl-	134	C10H14	000104-51-8	38
5		(3-Bromo-1-methylpropoxymethyl)b...	242	C11H15BrO	051666-29-6	35



Data Path : Z:\VOASRV\HPCHEM1\MSVOA W\DATA\VW062218\
 Data File : VW003434.D
 Acq On : 22 Jun 2018 18:47
 Operator : SY/AP
 Sample : J3621-19
 Misc : 4.23G/10ML/MSVOA W/SOIL
 ALS Vial : 1 Sample Multiplier: 1

Instrument :
 MSVOA_W
 ClientSampled :
 DAZ93

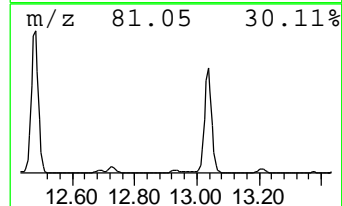
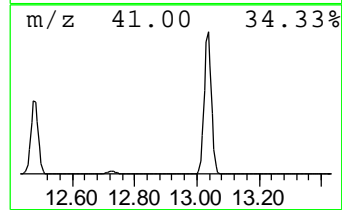
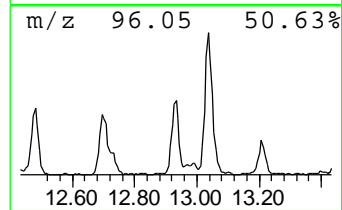
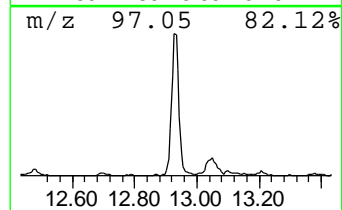
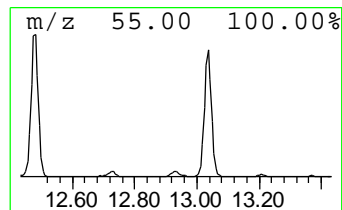
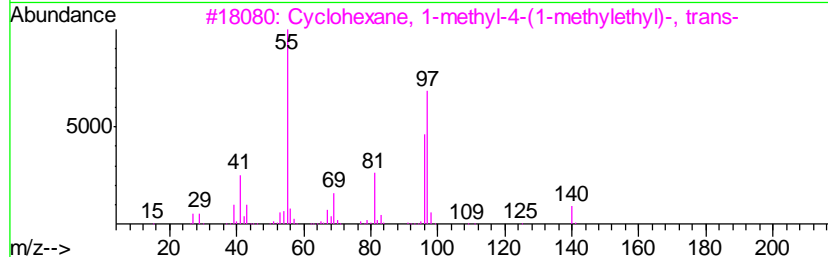
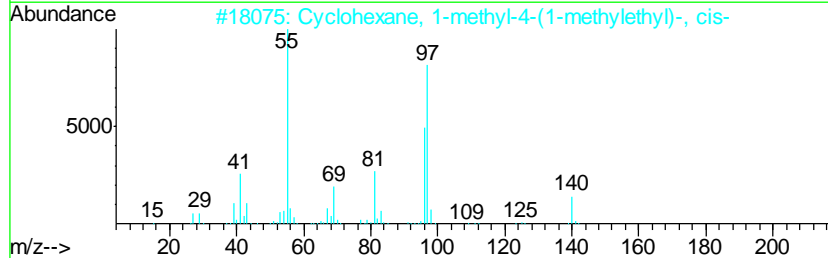
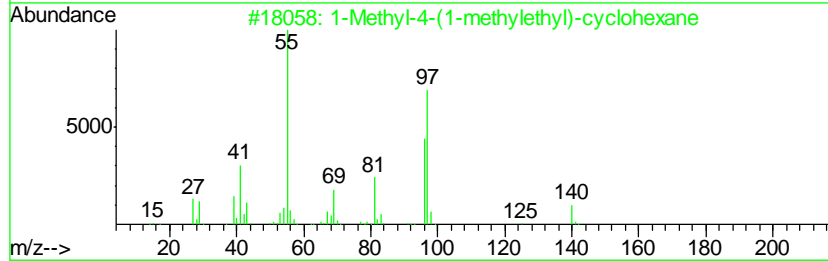
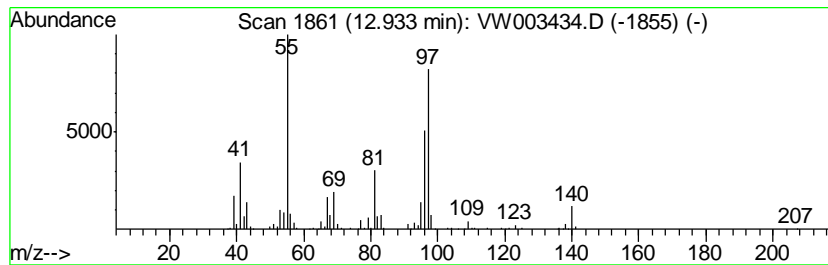
Quant Method : Z:\VOASRV\HPCHEM1\MSVOA_W\METHOD\SOM2WLM062018S.M
 Quant Title : VOC Analysis

TIC Library : C:\DATABASE\NIST11.L
 TIC Integration Parameters: LSCINT.P

 Peak Number 7 1-Methyl-4-(1-methylethyl)-... Concentration Rank 13

R.T.	EstConc	Area	Relative to ISTD	R.T.
12.93	4.84 ug/L	171721	1,4-Dichlorobenzene-d4	13.57

Hit#	of	Tentative ID	MW	MolForm	CAS#	Qual
1	5	1-Methyl-4-(1-methylethyl)-cyclo...	140	C10H20	000099-82-1	93
2		Cyclohexane, 1-methyl-4-(1-methy...	140	C10H20	006069-98-3	93
3		Cyclohexane, 1-methyl-4-(1-methy...	140	C10H20	001678-82-6	93
4		Cyclohexane, 1-methyl-4-(1-methy...	140	C10H20	006069-98-3	90
5		Cyclohexane, 1-methyl-4-(1-methy...	140	C10H20	001678-82-6	87



Data Path : Z:\VOASRV\HPCHEM1\MSVOA W\DATA\VW062218\
 Data File : VW003434.D
 Acq On : 22 Jun 2018 18:47
 Operator : SY/AP
 Sample : J3621-19
 Misc : 4.23G/10ML/MSVOA W/SOIL
 ALS Vial : 1 Sample Multiplier: 1

Instrument :
 MSVOA_W
 ClientSampled :
 DAZ93

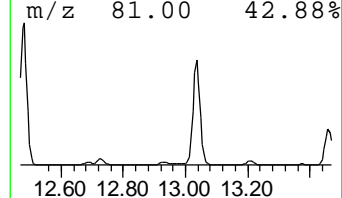
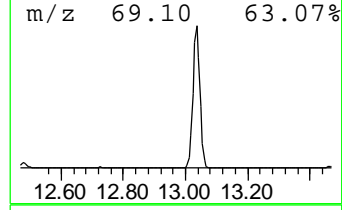
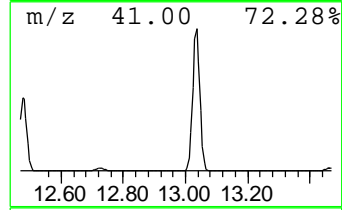
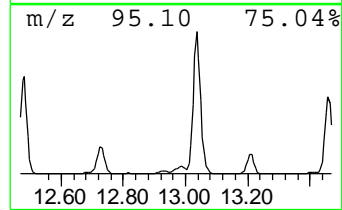
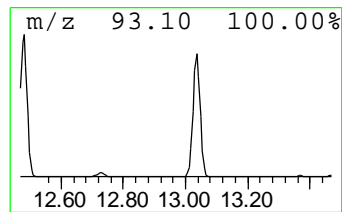
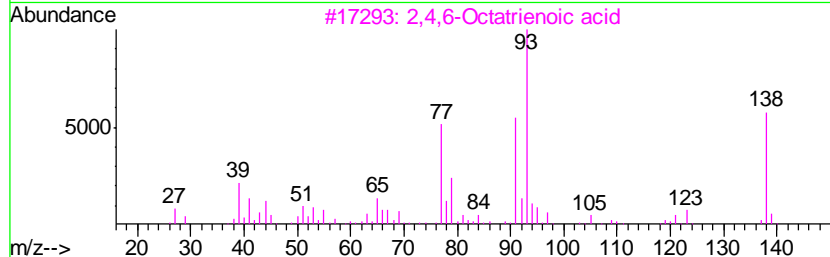
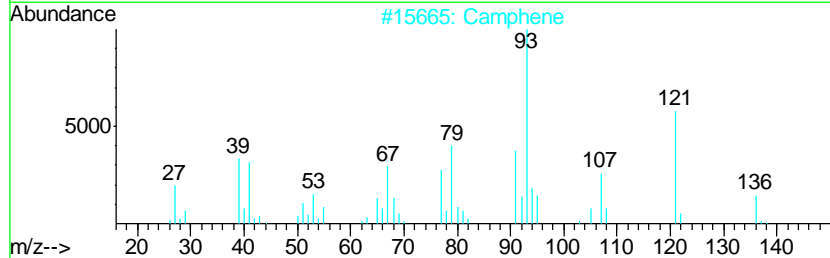
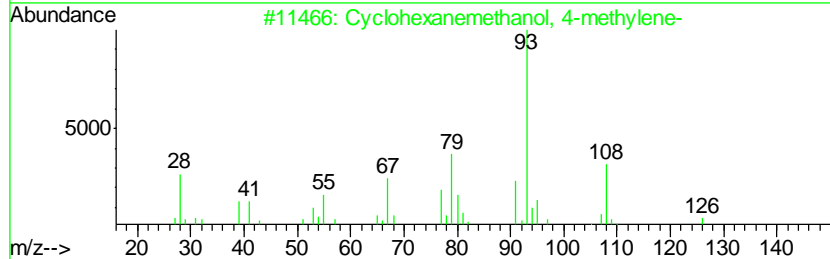
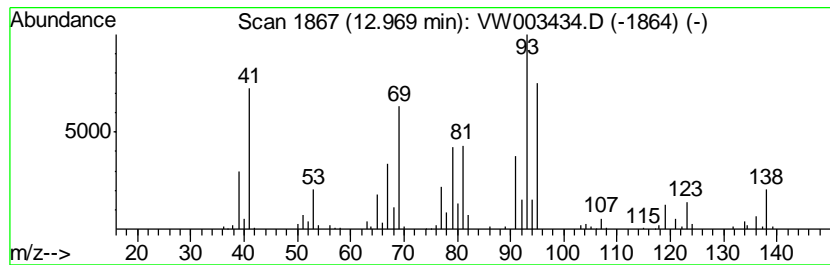
Quant Method : Z:\VOASRV\HPCHEM1\MSVOA_W\METHOD\SOM2WLM062018S.M
 Quant Title : VOC Analysis

TIC Library : C:\DATABASE\NIST11.L
 TIC Integration Parameters: LSCINT.P

 Peak Number 8 unknown-02 Concentration Rank 14

R.T.	EstConc	Area	Relative to ISTD	R.T.
12.97	3.55 ug/L	125927	1,4-Dichlorobenzene-d4	13.57

Hit#	of	Tentative ID	MW	MolForm	CAS#	Qual
1	5	Cyclohexanemethanol, 4-methylene-	126	C8H14O	001004-24-6	47
2		Camphene	136	C10H16	000079-92-5	47
3		2,4,6-Octatrienoic acid	138	C8H10O2	005205-32-3	46
4		.beta.-Pinene	136	C10H16	000127-91-3	43
5		Bicyclo[3.1.1]heptane, 6,6-dimet...	136	C10H16	018172-67-3	43



Data Path : Z:\VOASRV\HPCHEM1\MSVOA W\DATA\VW062218\
 Data File : VW003434.D
 Acq On : 22 Jun 2018 18:47
 Operator : SY/AP
 Sample : J3621-19
 Misc : 4.23G/10ML/MSVOA W/SOIL
 ALS Vial : 1 Sample Multiplier: 1

Instrument :
 MSVOA_W
 ClientSampled :
 DAZ93

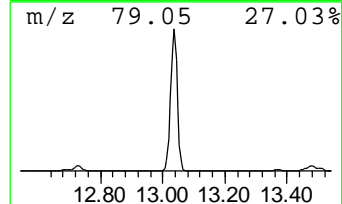
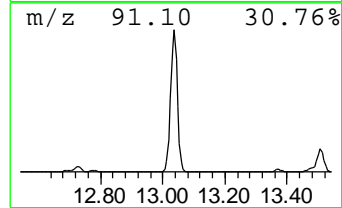
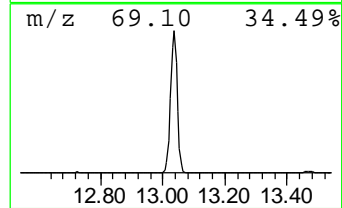
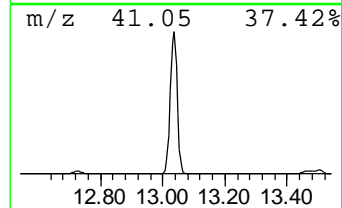
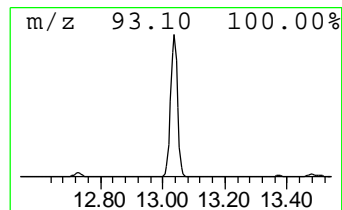
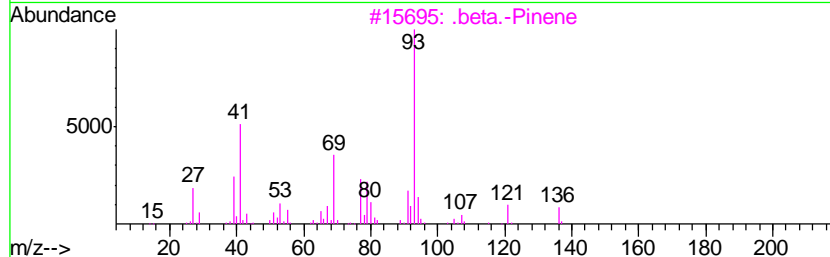
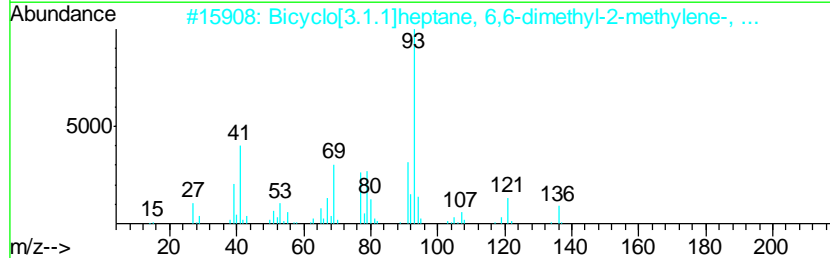
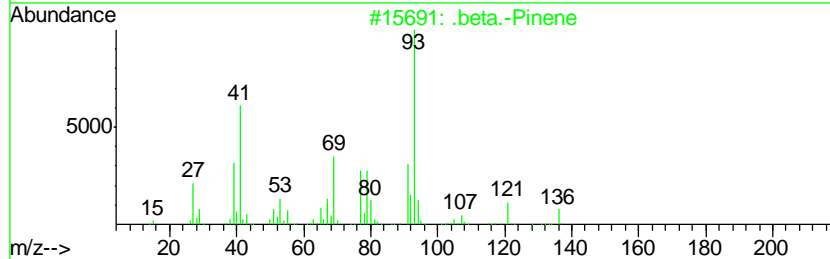
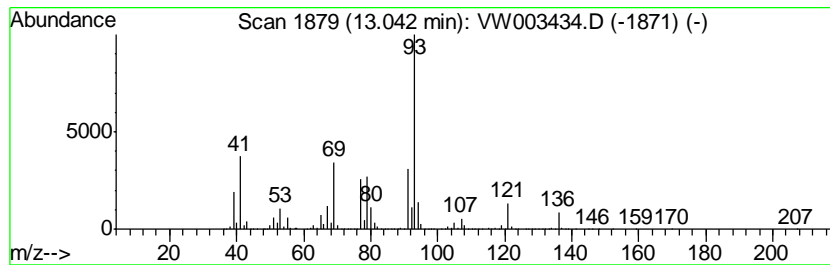
Quant Method : Z:\VOASRV\HPCHEM1\MSVOA_W\METHOD\SOM2WLM062018S.M
 Quant Title : VOC Analysis

TIC Library : C:\DATABASE\NIST11.L
 TIC Integration Parameters: LSCINT.P

 Peak Number 9 .beta.-Pinene Concentration Rank 2

R.T.	EstConc	Area	Relative to ISTD	R.T.
13.04	1394.63 ug/L	49518800	1,4-Dichlorobenzene-d4	13.57

Hit#	of	Tentative ID	MW	MolForm	CAS#	Qual
1	5	.beta.-Pinene	136	C10H16	000127-91-3	97
2		Bicyclo[3.1.1]heptane, 6,6-dimet...	136	C10H16	018172-67-3	96
3		.beta.-Pinene	136	C10H16	000127-91-3	93
4		Cyclohexene, 4-methylene-1-(1-me...	136	C10H16	000099-84-3	91
5		.beta.-Pinene	136	C10H16	000127-91-3	87



Data Path : Z:\VOASRV\HPCHEM1\MSVOA W\DATA\VW062218\
 Data File : VW003434.D
 Acq On : 22 Jun 2018 18:47
 Operator : SY/AP
 Sample : J3621-19
 Misc : 4.23G/10ML/MSVOA W/SOIL
 ALS Vial : 1 Sample Multiplier: 1

Instrument :
 MSVOA_W
 ClientSampleID :
 DAZ93

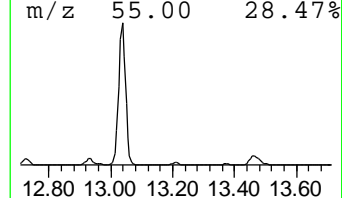
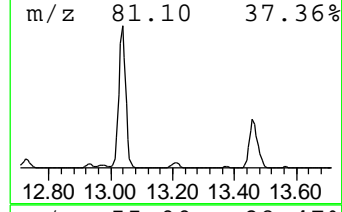
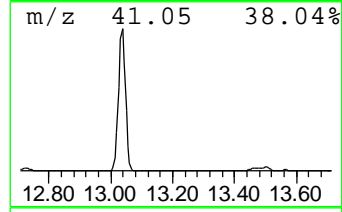
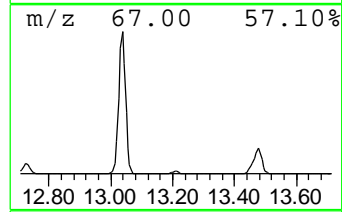
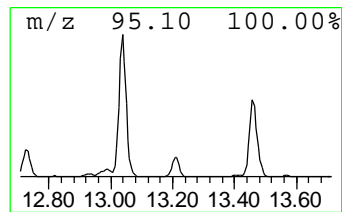
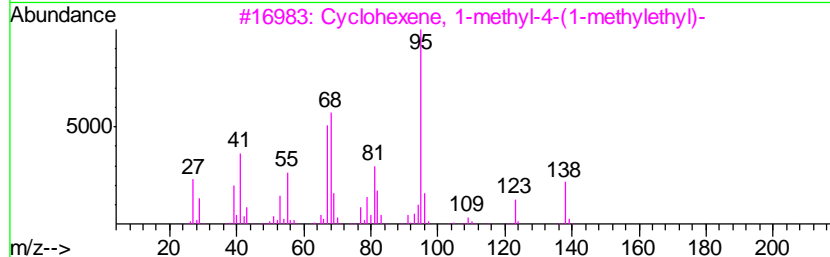
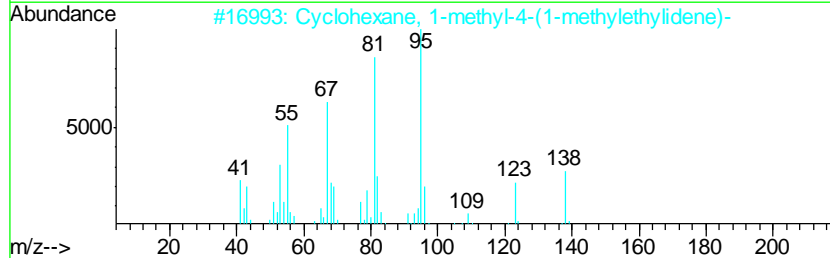
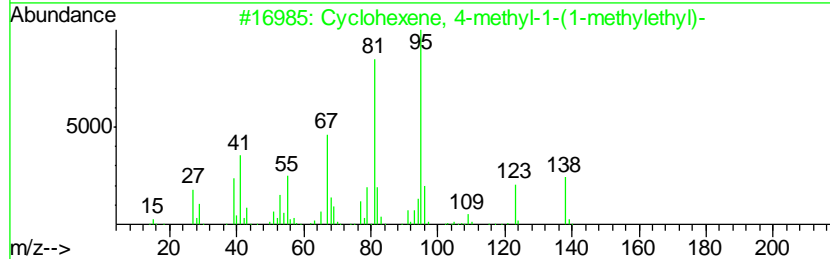
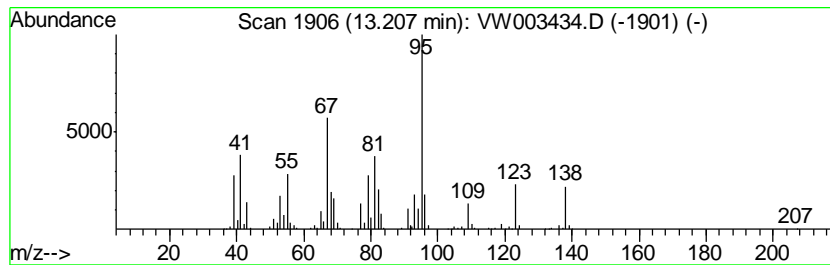
Quant Method : Z:\VOASRV\HPCHEM1\MSVOA_W\METHOD\SOM2WLM062018S.M
 Quant Title : VOC Analysis

TIC Library : C:\DATABASE\NIST11.L
 TIC Integration Parameters: LSCINT.P

 Peak Number 10 Cyclohexene, 4-methyl-1-(1-... Concentration Rank 10

R.T.	EstConc	Area	Relative to ISTD	R.T.
13.21	6.75 ug/L	239593	1,4-Dichlorobenzene-d4	13.57

Hit#	of	Tentative ID	MW	MolForm	CAS#	Qual
1	5	Cyclohexene, 4-methyl-1-(1-methy...	138	C10H18	000500-00-5	93
2		Cyclohexane, 1-methyl-4-(1-methy...	138	C10H18	001124-27-2	93
3		Cyclohexene, 1-methyl-4-(1-methy...	138	C10H18	005502-88-5	90
4		4-Acetyl-1-methylcyclohexene	138	C9H14O	006090-09-1	87
5		Cyclohexene, 1-methyl-4-(1-methy...	138	C10H18	001195-31-9	81



Data Path : Z:\VOASRV\HPCHEM1\MSVOA W\DATA\VW062218\
 Data File : VW003434.D
 Acq On : 22 Jun 2018 18:47
 Operator : SY/AP
 Sample : J3621-19
 Misc : 4.23G/10ML/MSVOA W/SOIL
 ALS Vial : 1 Sample Multiplier: 1

Instrument :
 MSVOA_W
 ClientSampled :
 DAZ93

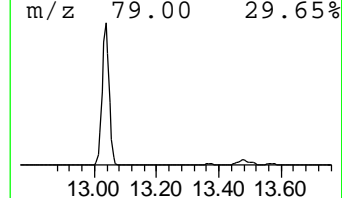
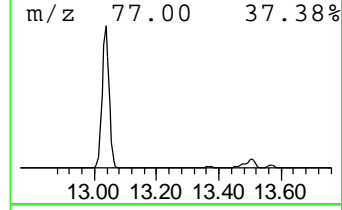
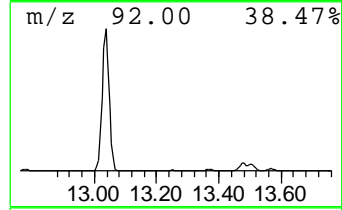
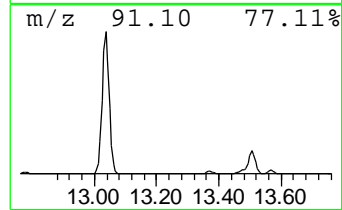
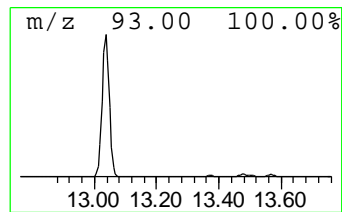
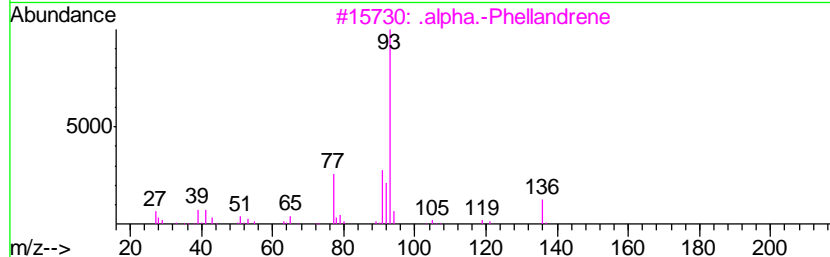
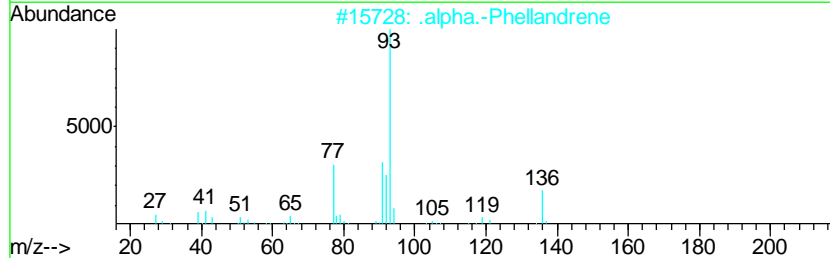
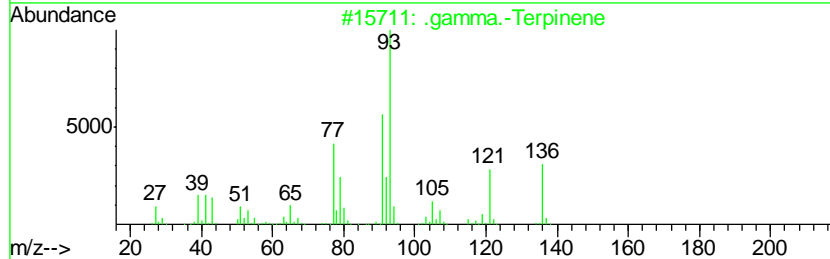
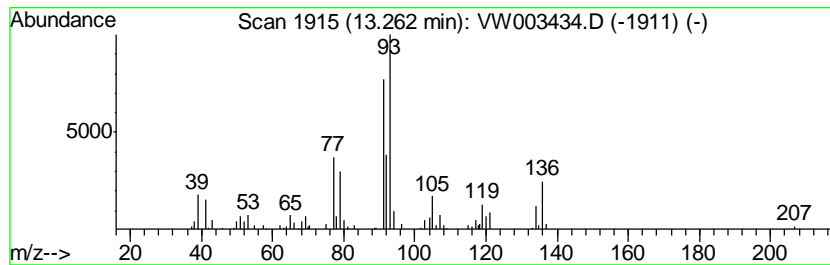
Quant Method : Z:\VOASRV\HPCHEM1\MSVOA_W\METHOD\SOM2WLM062018S.M
 Quant Title : VOC Analysis

TIC Library : C:\DATABASE\NIST11.L
 TIC Integration Parameters: LSCINT.P

 Peak Number 11 .gamma.-Terpinene Concentration Rank 19

R.T.	EstConc	Area	Relative to ISTD	R.T.
13.26	2.14 ug/L	75842	1,4-Dichlorobenzene-d4	13.57

Hit#	of	Tentative ID	MW	MolForm	CAS#	Qual
1	5	.gamma.-Terpinene	136	C10H16	000099-85-4	72
2		.alpha.-Phellandrene	136	C10H16	000099-83-2	64
3		.alpha.-Phellandrene	136	C10H16	000099-83-2	64
4		Bicyclo[3.1.0]hex-2-ene, 2-methy...	136	C10H16	002867-05-2	59
5		3-Carene	136	C10H16	013466-78-9	59



Data Path : Z:\VOASRV\HPCHEM1\MSVOA W\DATA\VW062218\
 Data File : VW003434.D
 Acq On : 22 Jun 2018 18:47
 Operator : SY/AP
 Sample : J3621-19
 Misc : 4.23G/10ML/MSVOA W/SOIL
 ALS Vial : 1 Sample Multiplier: 1

Instrument :
 MSVOA_W
 ClientSampleID :
 DAZ93

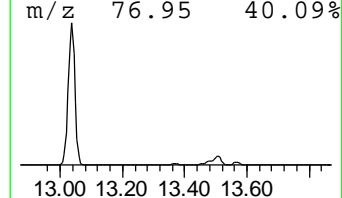
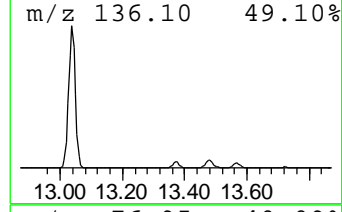
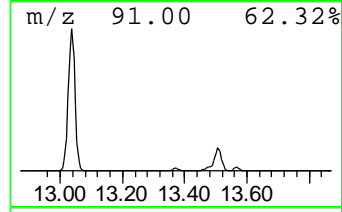
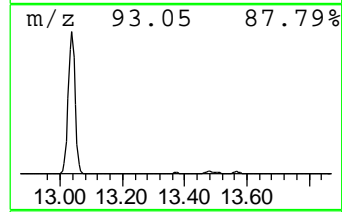
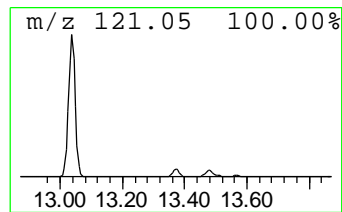
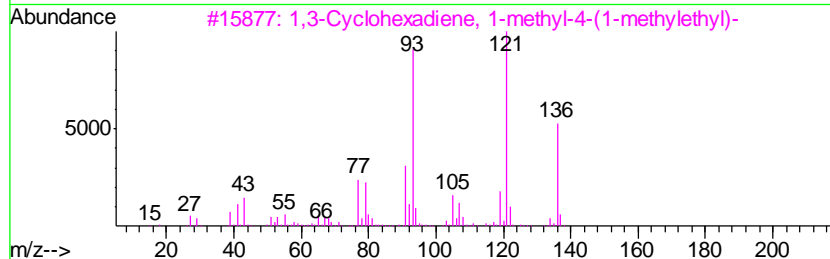
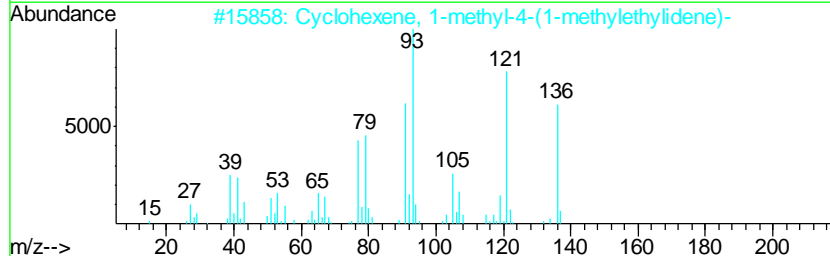
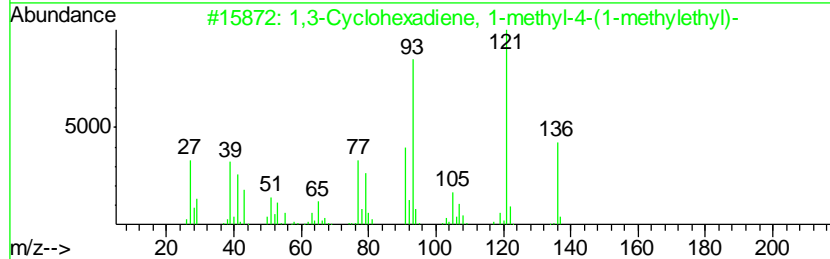
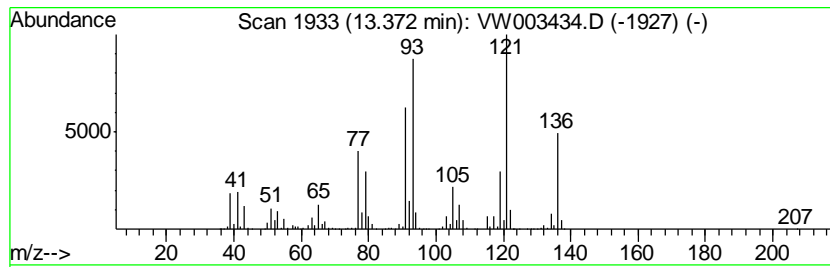
Quant Method : Z:\VOASRV\HPCHEM1\MSVOA_W\METHOD\SOM2WLM062018S.M
 Quant Title : VOC Analysis

TIC Library : C:\DATABASE\NIST11.L
 TIC Integration Parameters: LSCINT.P

 Peak Number 12 1,3-Cyclohexadiene, 1-methyl... Concentration Rank 6

R.T.	EstConc	Area	Relative to ISTD	R.T.
13.37	15.44 ug/L	548083	1,4-Dichlorobenzene-d4	13.57

Hit#	of	Tentative ID	MW	MolForm	CAS#	Qual
1	5	1,3-Cyclohexadiene, 1-methyl-4-(...	136	C10H16	000099-86-5	96
2		Cyclohexene, 1-methyl-4-(1-methyl...	136	C10H16	000586-62-9	95
3		1,3-Cyclohexadiene, 1-methyl-4-(...	136	C10H16	000099-86-5	93
4		(+)-4-Carene	136	C10H16	029050-33-7	91
5		(+)-2-Carene	136	C10H16	1000149-94-6	90



Data Path : Z:\VOASRV\HPCHEM1\MSVOA W\DATA\VW062218\
 Data File : VW003434.D
 Acq On : 22 Jun 2018 18:47
 Operator : SY/AP
 Sample : J3621-19
 Misc : 4.23G/10ML/MSVOA W/SOIL
 ALS Vial : 1 Sample Multiplier: 1

Instrument :
 MSVOA_W
 ClientSampled :
 DAZ93

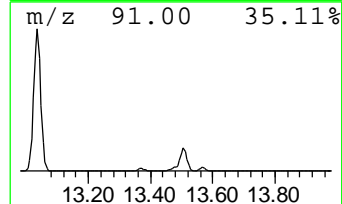
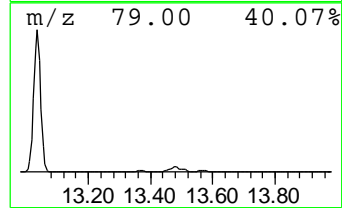
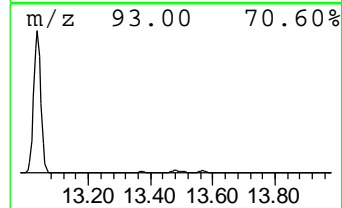
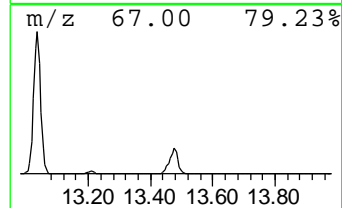
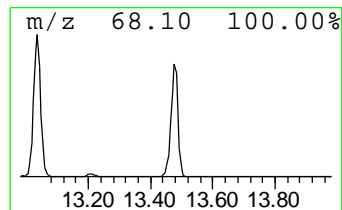
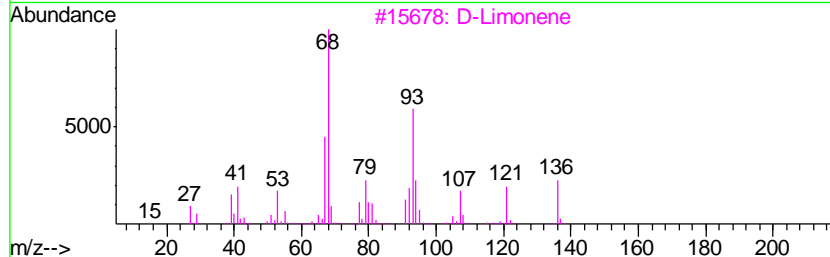
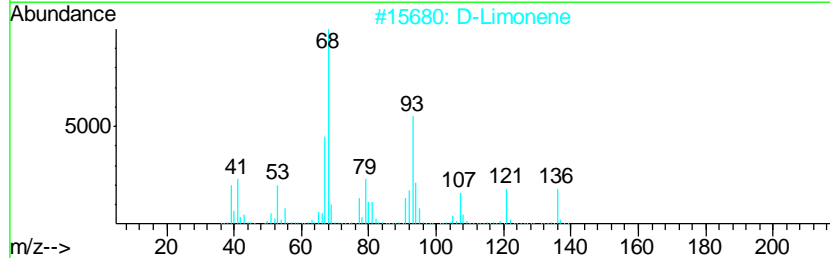
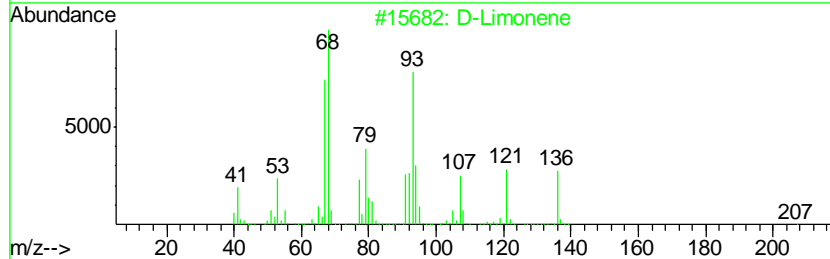
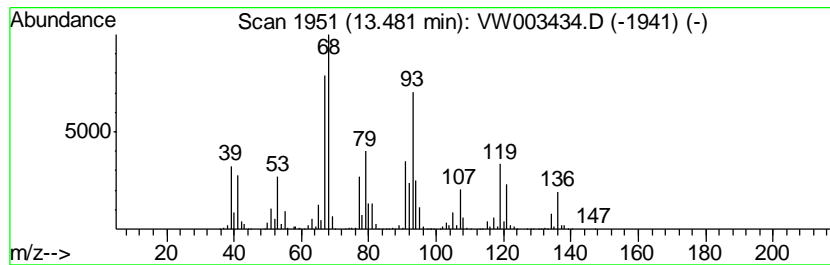
Quant Method : Z:\VOASRV\HPCHEM1\MSVOA_W\METHOD\SOM2WLM062018S.M
 Quant Title : VOC Analysis

TIC Library : C:\DATABASE\NIST11.L
 TIC Integration Parameters: LSCINT.P

 Peak Number 13 D-Limonene Concentration Rank 5

R.T.	EstConc	Area	Relative to ISTD	R.T.
13.48	68.98 ug/L	2449380	1,4-Dichlorobenzene-d4	13.57

Hit#	of	Tentative ID	MW	MolForm	CAS#	Qual
1	5	D-Limonene	136	C10H16	005989-27-5	96
2		D-Limonene	136	C10H16	005989-27-5	93
3		D-Limonene	136	C10H16	005989-27-5	76
4		Cyclohexene, 1-methyl-4-(1-methy...	136	C10H16	005989-54-8	74
5		Limonene	136	C10H16	000138-86-3	72



Data Path : Z:\VOASRV\HPCHEM1\MSVOA W\DATA\VW062218\
 Data File : VW003434.D
 Acq On : 22 Jun 2018 18:47
 Operator : SY/AP
 Sample : J3621-19
 Misc : 4.23G/10ML/MSVOA W/SOIL
 ALS Vial : 1 Sample Multiplier: 1

Instrument :
 MSVOA_W
 ClientSampleID :
 DAZ93

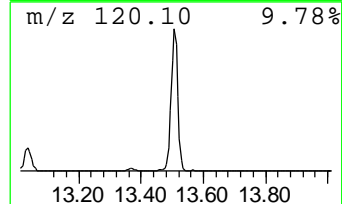
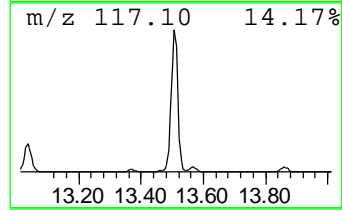
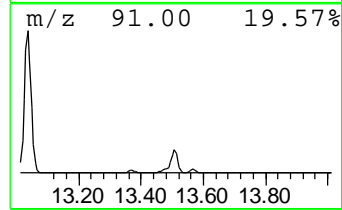
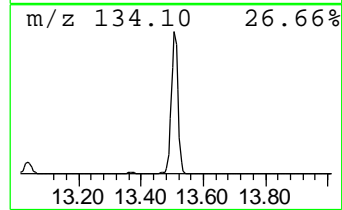
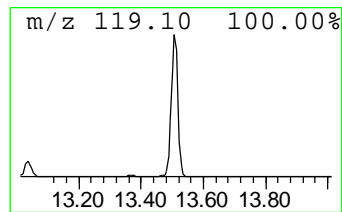
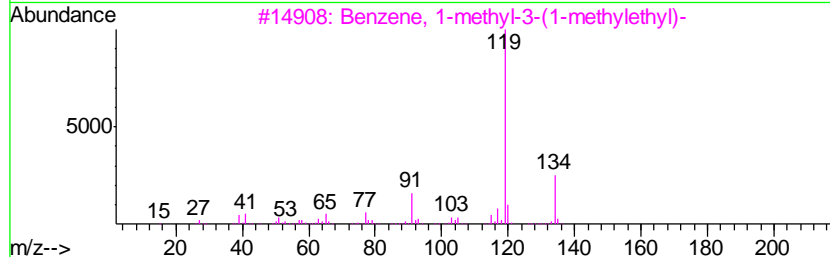
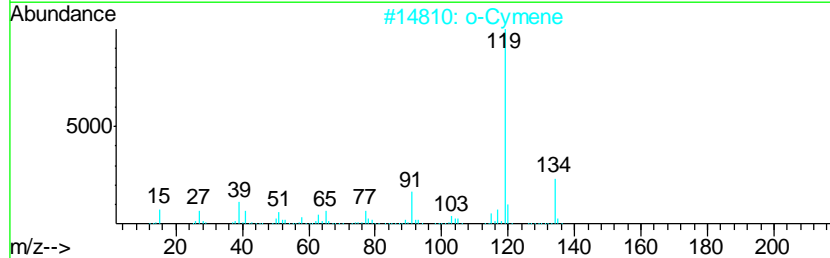
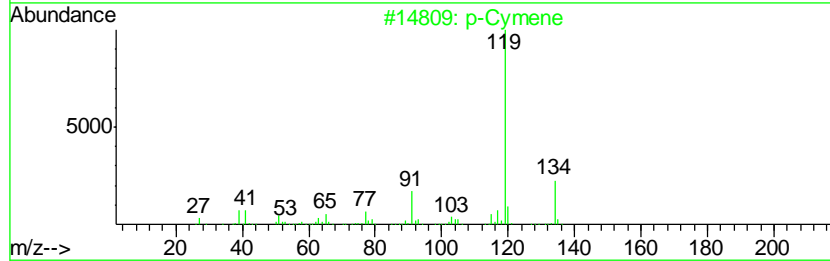
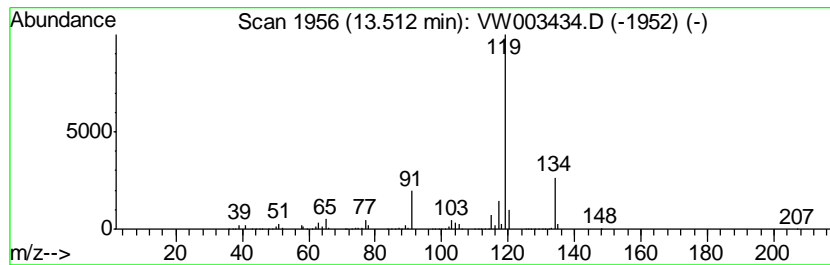
Quant Method : Z:\VOASRV\HPCHEM1\MSVOA_W\METHOD\SOM2WLM062018S.M
 Quant Title : VOC Analysis

TIC Library : C:\DATABASE\NIST11.L
 TIC Integration Parameters: LSCINT.P

 Peak Number 14 p-Cymene Concentration Rank 4

R.T.	EstConc	Area	Relative to ISTD	R.T.
13.51	169.89 ug/L	6032340	1,4-Dichlorobenzene-d4	13.57

Hit#	of	Tentative ID	MW	MolForm	CAS#	Qual
1	5	p-Cymene	134	C10H14	000099-87-6	95
2		o-Cymene	134	C10H14	000527-84-4	94
3		Benzene, 1-methyl-3-(1-methyleth...	134	C10H14	000535-77-3	94
4		p-Cymene	134	C10H14	000099-87-6	91
5		Benzene, 1-methyl-3-(1-methyleth...	134	C10H14	000535-77-3	91



Data Path : Z:\VOASRV\HPCHEM1\MSVOA W\DATA\VW062218\
 Data File : VW003434.D
 Acq On : 22 Jun 2018 18:47
 Operator : SY/AP
 Sample : J3621-19
 Misc : 4.23G/10ML/MSVOA W/SOIL
 ALS Vial : 1 Sample Multiplier: 1

Instrument :
 MSVOA_W
 ClientSampled :
 DAZ93

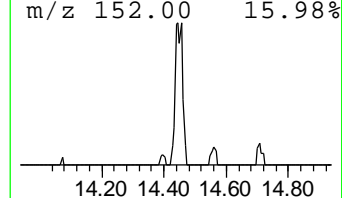
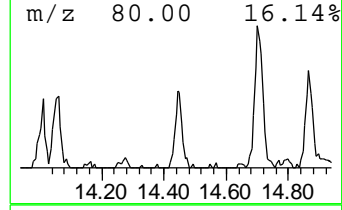
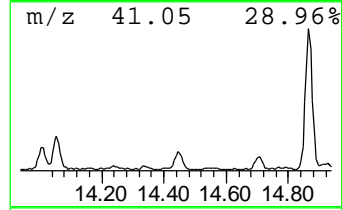
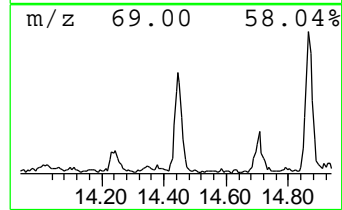
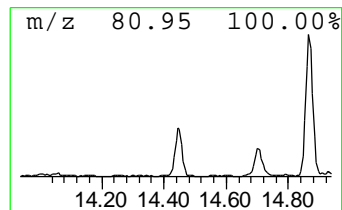
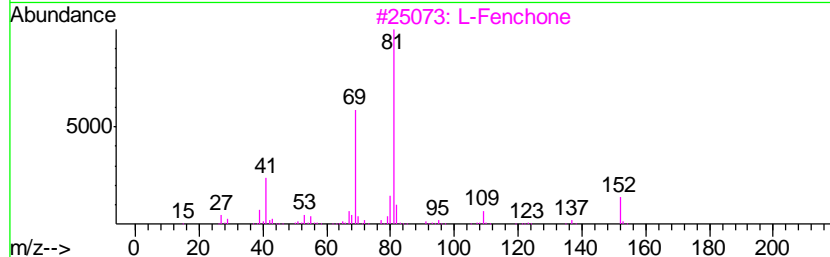
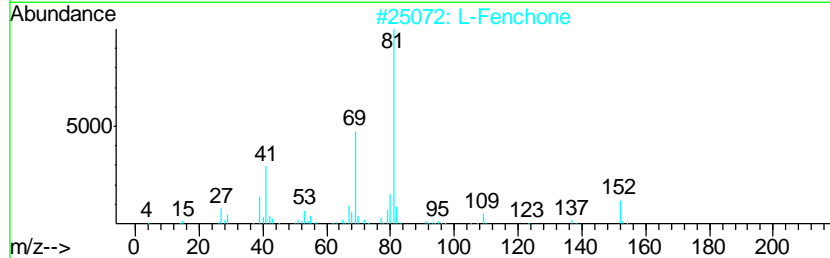
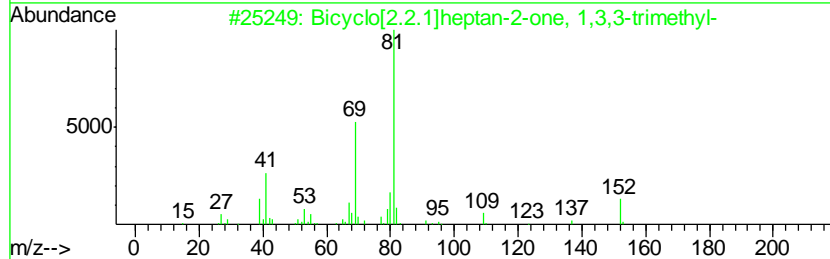
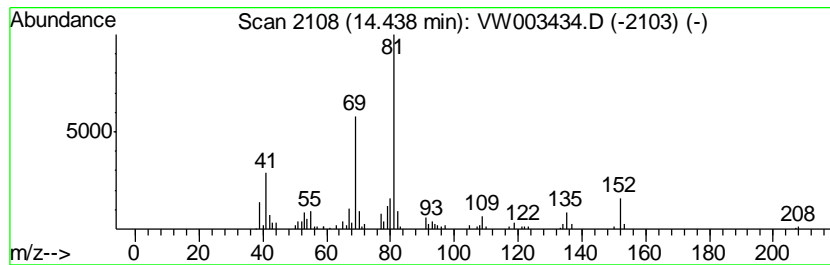
Quant Method : Z:\VOASRV\HPCHEM1\MSVOA_W\METHOD\SOM2WLM062018S.M
 Quant Title : VOC Analysis

TIC Library : C:\DATABASE\NIST11.L
 TIC Integration Parameters: LSCINT.P

 Peak Number 18 Bicyclo[2.2.1]heptan-2-one,... Concentration Rank 21

R.T.	EstConc	Area	Relative to ISTD	R.T.
14.44	1.54 ug/L	54786	1,4-Dichlorobenzene-d4	13.57

Hit#	of	Tentative ID	MW	MolForm	CAS#	Qual
1	5	Bicyclo[2.2.1]heptan-2-one, 1,3,...	152	C10H16O	001195-79-5	90
2		L-Fenchone	152	C10H16O	007787-20-4	90
3		L-Fenchone	152	C10H16O	007787-20-4	87
4		Bicyclo[2.2.1]heptan-2-one, 1,3,...	152	C10H16O	001195-79-5	87
5		D-Fenchone	152	C10H16O	004695-62-9	83



Data Path : Z:\VOASRV\HPCHEM1\MSVOA W\DATA\VW062218\
 Data File : VW003434.D
 Acq On : 22 Jun 2018 18:47
 Operator : SY/AP
 Sample : J3621-19
 Misc : 4.23G/10ML/MSVOA W/SOIL
 ALS Vial : 1 Sample Multiplier: 1

Instrument :
 MSVOA_W
 ClientSampled :
 DAZ93

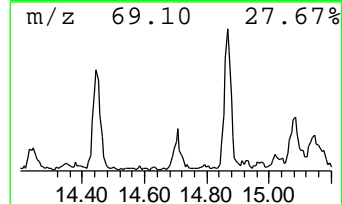
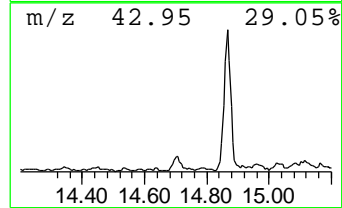
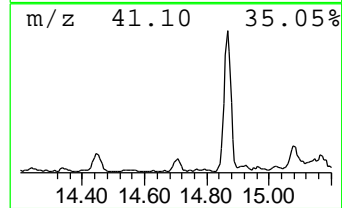
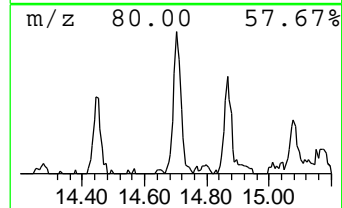
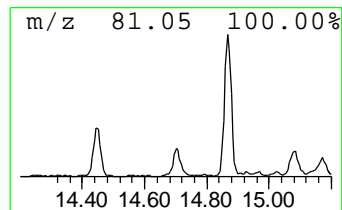
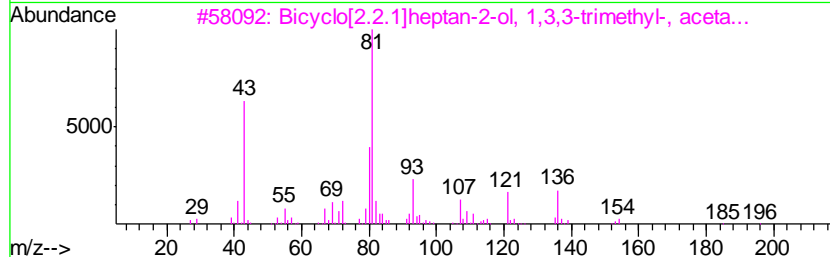
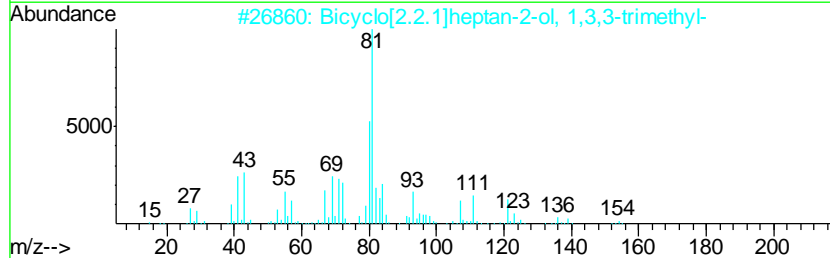
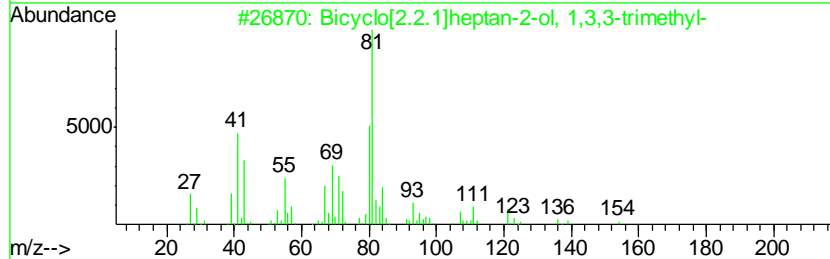
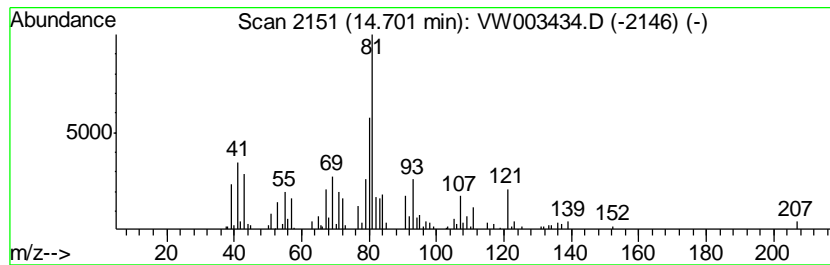
Quant Method : Z:\VOASRV\HPCHEM1\MSVOA_W\METHOD\SOM2WLM062018S.M
 Quant Title : VOC Analysis

TIC Library : C:\DATABASE\NIST11.L
 TIC Integration Parameters: LSCINT.P

 Peak Number 19 Bicyclo[2.2.1]heptan-2-ol, ... Concentration Rank 22

R.T.	EstConc	Area	Relative to ISTD	R.T.
14.70	1.50 ug/L	53420	1,4-Dichlorobenzene-d4	13.57

Hit#	of	Tentative ID	MW	MolForm	CAS#	Qual
1	5	Bicyclo[2.2.1]heptan-2-ol, 1,3,3...	154	C10H18O	001632-73-1	72
2		Bicyclo[2.2.1]heptan-2-ol, 1,3,3...	154	C10H18O	001632-73-1	64
3		Bicyclo[2.2.1]heptan-2-ol, 1,3,3...	196	C12H20O2	076109-40-5	58
4		p-Tolylsulfonic acid, 1,3,3-trim...	308	C17H24O3S	1000196-53-0	53
5		Fenchyl acetate	196	C12H20O2	013851-11-1	52



Data Path : Z:\VOASRV\HPCHEM1\MSVOA W\DATA\VW062218\
 Data File : VW003434.D
 Acq On : 22 Jun 2018 18:47
 Operator : SY/AP
 Sample : J3621-19
 Misc : 4.23G/10ML/MSVOA W/SOIL
 ALS Vial : 1 Sample Multiplier: 1

Instrument :
 MSVOA_W
 ClientSampleID :
 DAZ93

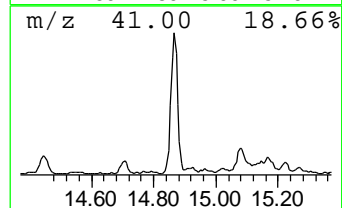
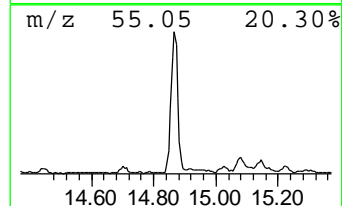
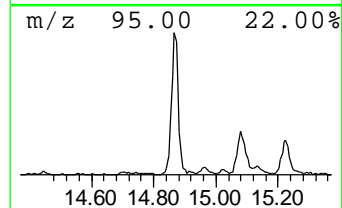
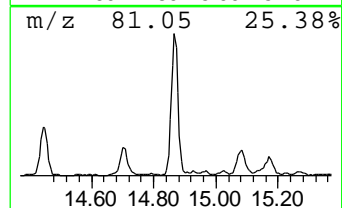
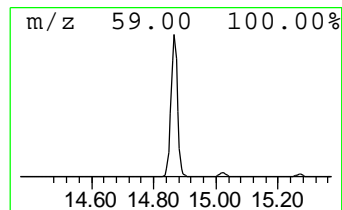
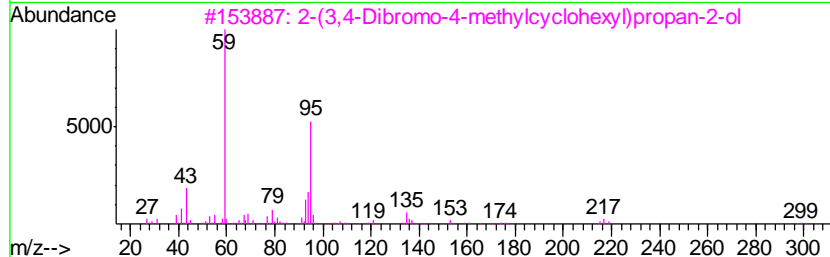
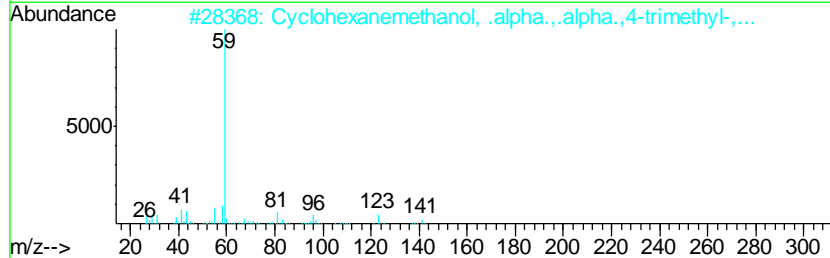
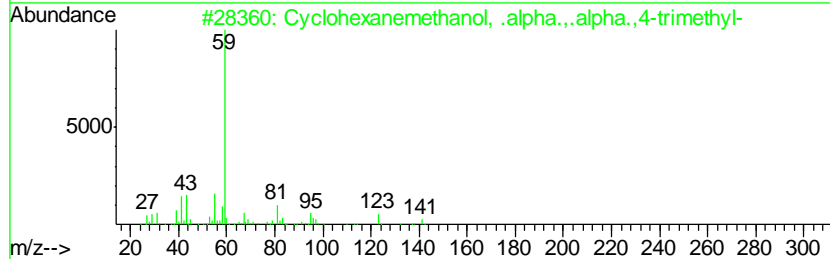
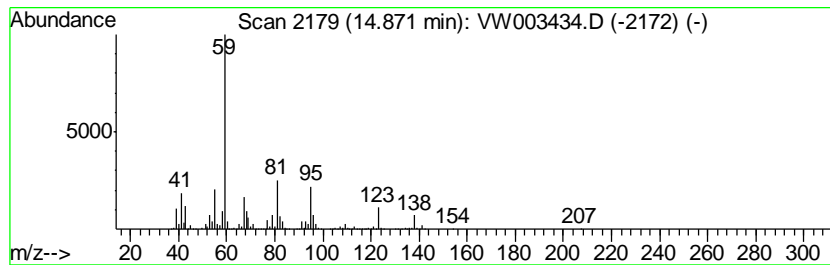
Quant Method : Z:\VOASRV\HPCHEM1\MSVOA_W\METHOD\SOM2WLM062018S.M
 Quant Title : VOC Analysis

TIC Library : C:\DATABASE\NIST11.L
 TIC Integration Parameters: LSCINT.P

 Peak Number 20 Cyclohexanemethanol, .alpha... Concentration Rank 7

R.T.	EstConc	Area	Relative to ISTD	R.T.
14.87	15.04 ug/L	534099	1,4-Dichlorobenzene-d4	13.57

Hit#	of	Tentative ID	MW	MolForm	CAS#	Qual
1	5	Cyclohexanemethanol, .alpha.,.al...	156	C10H20O	000498-81-7	64
2		Cyclohexanemethanol, .alpha.,.al...	156	C10H20O	007322-63-6	45
3		2-(3,4-Dibromo-4-methylcyclohexy...	312	C10H18Br2O	110202-13-6	40
4		4-O-Acetyl-2,5-di-O-methyl-3,6-d...	215	C10H17NO4	1000101-80-3	40
5		4-Methoxy-1-pentene	100	C6H12O	098386-09-5	38



Data Path : Z:\VOASRV\HPCHEM1\MSVOA W\DATA\VW062218\
 Data File : VW003434.D
 Acq On : 22 Jun 2018 18:47
 Operator : SY/AP
 Sample : J3621-19
 Misc : 4.23G/10ML/MSVOA W/SOIL
 ALS Vial : 1 Sample Multiplier: 1

Instrument :
 MSVOA_W
 ClientSampled :
 DAZ93

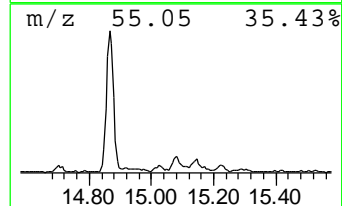
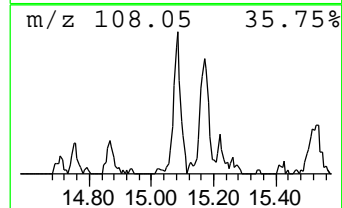
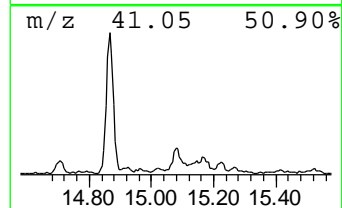
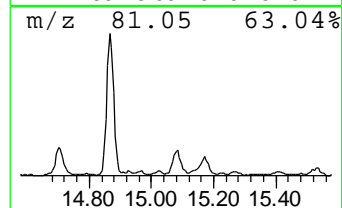
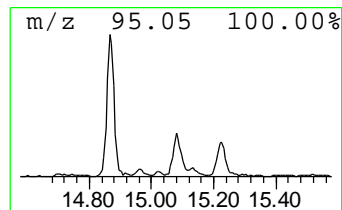
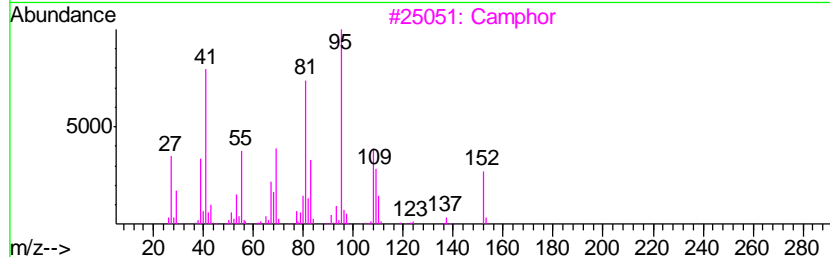
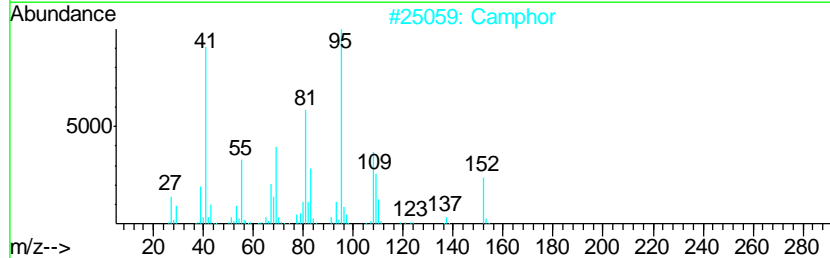
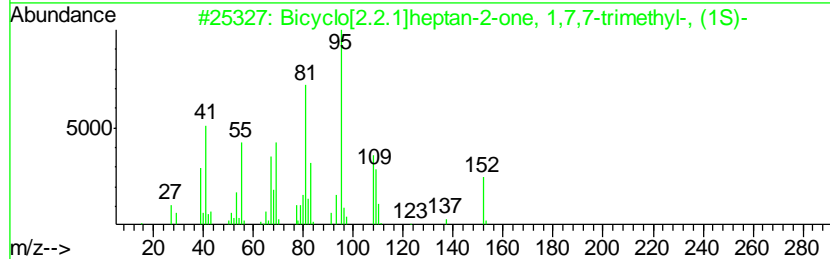
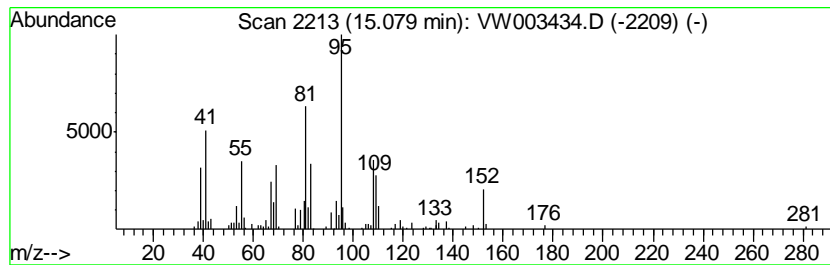
Quant Method : Z:\VOASRV\HPCHEM1\MSVOA_W\METHOD\SOM2WLM062018S.M
 Quant Title : VOC Analysis

TIC Library : C:\DATABASE\NIST11.L
 TIC Integration Parameters: LSCINT.P

 Peak Number 21 Bicyclo[2.2.1]heptan-2-one,... Concentration Rank 18

R.T.	EstConc	Area	Relative to ISTD	R.T.
15.08	2.58 ug/L	91524	1,4-Dichlorobenzene-d4	13.57

Hit#	of	Tentative ID	MW	MolForm	CAS#	Qual
1	5	Bicyclo[2.2.1]heptan-2-one, 1,7,...	152	C10H16O	000464-48-2	97
2		Camphor	152	C10H16O	000076-22-2	96
3		Camphor	152	C10H16O	000076-22-2	95
4		Camphor	152	C10H16O	000076-22-2	95
5		(+)-2-Bornanone	152	C10H16O	000464-49-3	95



Data Path : Z:\VOASRV\HPCHEM1\MSVOA W\DATA\VW062218\
 Data File : VW003434.D
 Acq On : 22 Jun 2018 18:47
 Operator : SY/AP
 Sample : J3621-19
 Misc : 4.23G/10ML/MSVOA W/SOIL
 ALS Vial : 1 Sample Multiplier: 1

Instrument :
 MSVOA_W
 ClientSampleID :
 DAZ93

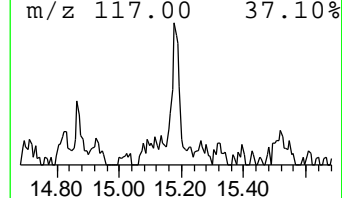
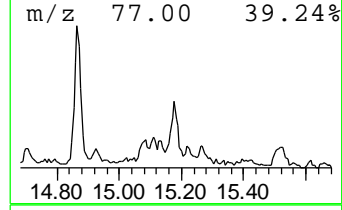
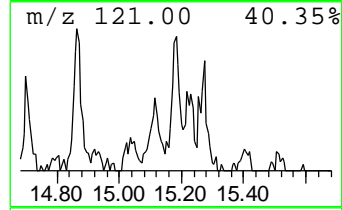
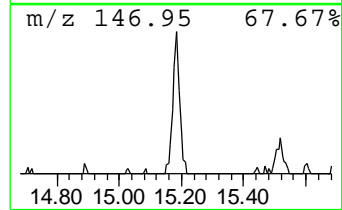
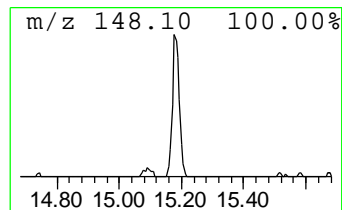
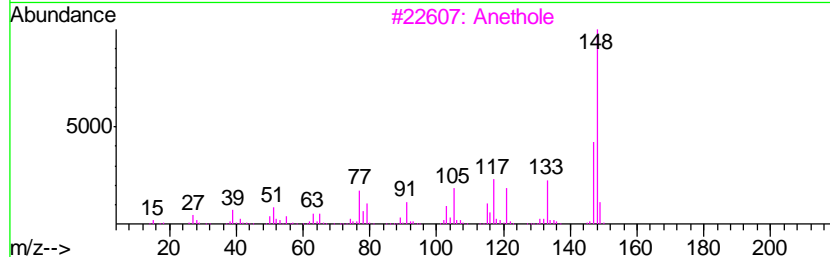
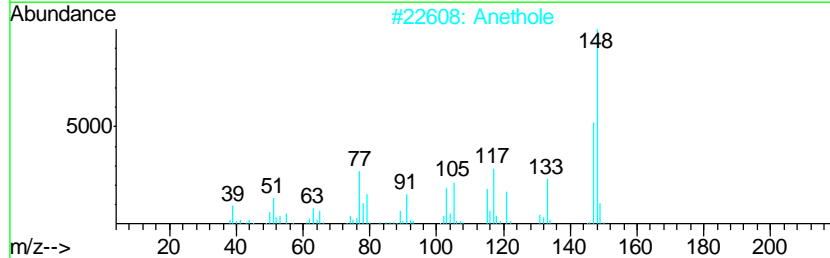
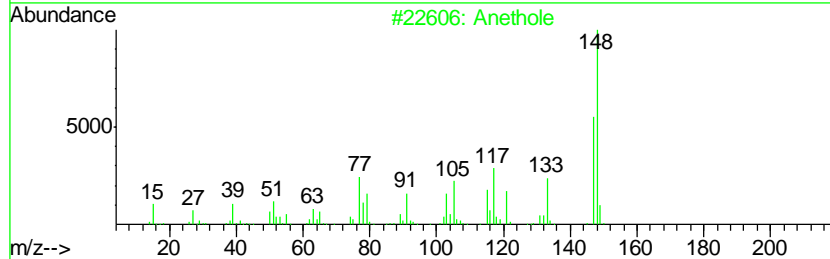
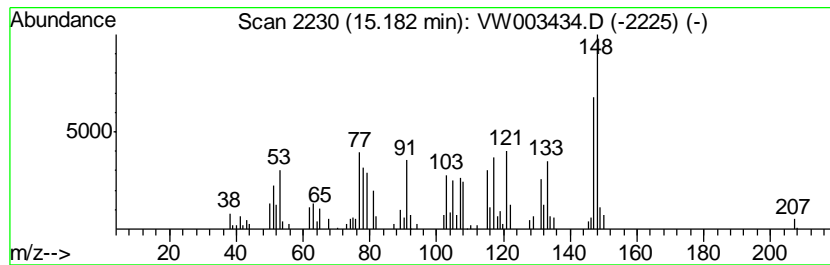
Quant Method : Z:\VOASRV\HPCHEM1\MSVOA_W\METHOD\SOM2WLM062018S.M
 Quant Title : VOC Analysis

TIC Library : C:\DATABASE\NIST11.L
 TIC Integration Parameters: LSCINT.P

 Peak Number 22 Anethole Concentration Rank 23

R.T.	EstConc	Area	Relative to ISTD	R.T.
15.18	1.32 ug/L	46692	1,4-Dichlorobenzene-d4	13.57

Hit#	of	Tentative ID	MW	MolForm	CAS#	Qual
1	5	Anethole	148	C10H12O	000104-46-1	93
2		Anethole	148	C10H12O	000104-46-1	93
3		Anethole	148	C10H12O	000104-46-1	90
4		Estragole	148	C10H12O	000140-67-0	86
5		Anethole	148	C10H12O	000104-46-1	84



Data Path : Z:\VOASRV\HPCHEM1\MSVOA W\DATA\VW062218\
 Data File : VW003434.D
 Acq On : 22 Jun 2018 18:47
 Operator : SY/AP
 Sample : J3621-19
 Misc : 4.23G/10ML/MSVOA W/SOIL
 ALS Vial : 1 Sample Multiplier: 1

Instrument :
 MSVOA_W
 ClientSampled :
 DAZ93

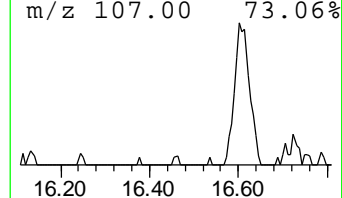
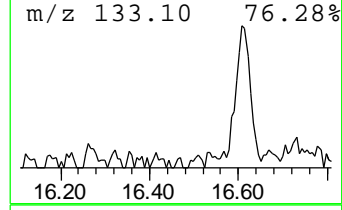
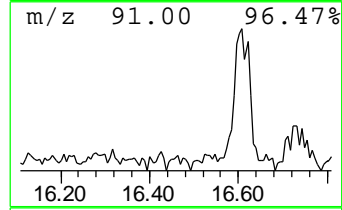
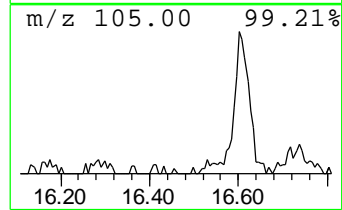
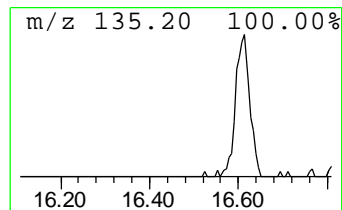
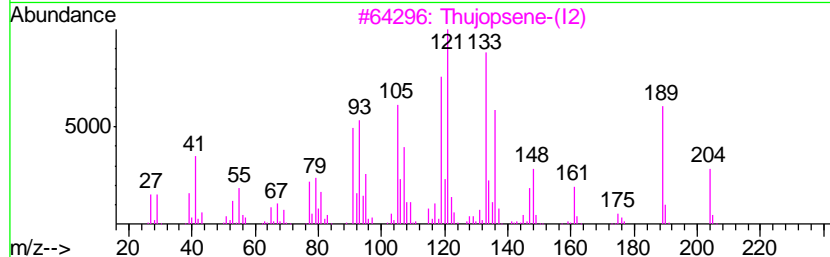
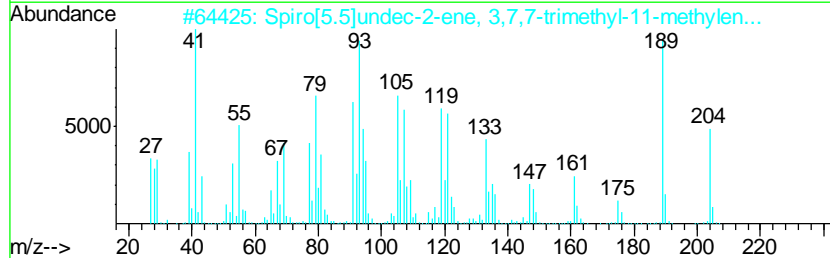
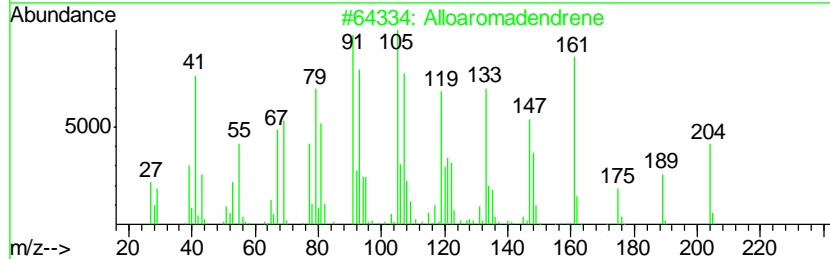
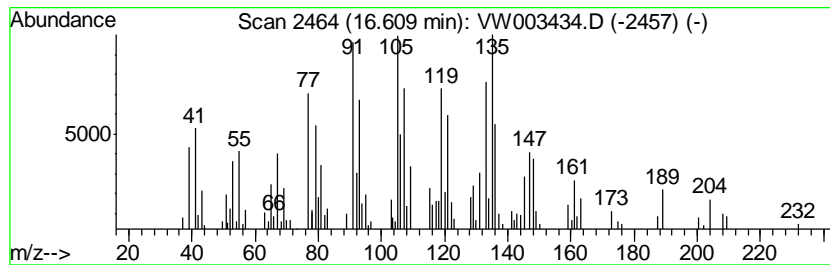
Quant Method : Z:\VOASRV\HPCHEM1\MSVOA_W\METHOD\SOM2WLM062018S.M
 Quant Title : VOC Analysis

TIC Library : C:\DATABASE\NIST11.L
 TIC Integration Parameters: LSCINT.P

 Peak Number 23 unknown-03 Concentration Rank 20

R.T.	EstConc	Area	Relative to ISTD	R.T.
16.61	1.67 ug/L	59420	1,4-Dichlorobenzene-d4	13.57

Hit#	of	Tentative ID	MW	MolForm	CAS#	Qual
1	5	Alloaromadendrene	204	C15H24	025246-27-9	49
2		Spiro[5.5]undec-2-ene, 3,7,7-tri...	204	C15H24	018431-82-8	46
3		Thujopsene-(I2)	204	C15H24	1000152-20-4	41
4		Benzene, 2,4-diethyl-1-methyl-	148	C11H16	001758-85-6	35
5		Bicyclo[7.2.0]undec-4-ene, 4,11,...	204	C15H24	013877-93-5	35



Data Path : Z:\VOASRV\HPCHEM1\MSVOA_W\DATA\VW062218\
 Data File : VW003434.D
 Acq On : 22 Jun 2018 18:47
 Operator : SY/AP
 Sample : J3621-19
 Misc : 4.23G/10ML/MSVOA_W/SOIL
 ALS Vial : 1 Sample Multiplier: 1

Instrument :
 MSVOA_W
 ClientSampleId :
 DAZ93

Quant Method : Z:\VOASRV\HPCHEM1\MSVOA_W\METHOD\SOM2WLM062018S.M
 Quant Title : VOC Analysis

TIC Library : C:\DATABASE\NIST11.L
 TIC Integration Parameters: LSCINT.P

TIC Top Hit name	RT	EstConc	Units	Response	--Internal Standard--			
					#	RT	Resp	Conc
Dimethyl ether	2.15	9.7	ug/L	206853	1	8.85	530706	25.0
Tricyclo[2.2.1.0(...	12.37	12.7	ug/L	246621	2	11.63	485171	25.0
.alpha.-Pinene	12.48	2991.0	ug/L	58046100	2	11.63	485171	25.0
unknown-01	12.78	3.2	ug/L	112188	3	13.57	887666	25.0
1-Methyl-4-(1-met...	12.93	4.8	ug/L	171721	3	13.57	887666	25.0
unknown-02	12.97	3.5	ug/L	125927	3	13.57	887666	25.0
.beta.-Pinene	13.04	1394.6	ug/L	49518800	3	13.57	887666	25.0
Cyclohexene, 4-me...	13.21	6.8	ug/L	239593	3	13.57	887666	25.0
.gamma.-Terpinene	13.26	2.1	ug/L	75842	3	13.57	887666	25.0
1,3-Cyclohexadien...	13.37	15.4	ug/L	548083	3	13.57	887666	25.0
D-Limonene	13.48	69.0	ug/L	2449380	3	13.57	887666	25.0
p-Cymene	13.51	169.9	ug/L	6032340	3	13.57	887666	25.0
Bicyclo[2.2.1]hep...	14.44	1.5	ug/L	54786	3	13.57	887666	25.0
Bicyclo[2.2.1]hep...	14.70	1.5	ug/L	53420	3	13.57	887666	25.0
Cyclohexanemethan...	14.87	15.0	ug/L	534099	3	13.57	887666	25.0
Bicyclo[2.2.1]hep...	15.08	2.6	ug/L	91524	3	13.57	887666	25.0
Anethole	15.18	1.3	ug/L	46692	3	13.57	887666	25.0
unknown-03	16.61	1.7	ug/L	59420	3	13.57	887666	25.0