

Data Path : Z:\VOASRV\HPCHEM1\MSVOA W\DATA\VW062418\
 Data File : VW003518.D
 Acq On : 24 Jun 2018 18:31
 Operator : SY/AP
 Sample : J3669-20
 Misc : 5.49G/5ML/MSVOA W/SOIL
 ALS Vial : 18 Sample Multiplier: 1

Instrument :
 MSVOA_W
 ClientSampleId :
 WP021SB475-29-31-180620

Quant Time: Jun 26 15:07:29 2018
 Quant Method : Z:\VOASRV\HPCHEM1\MSVOA_W\METHOD\82W061318S.M
 Quant Title : SW846 8260
 QLast Update : Sat Jun 16 05:18:54 2018
 Response via : Initial Calibration

Internal Standards	R.T.	QIon	Response	Conc	Units	Dev(Min)
1) Pentafluorobenzene	7.95	168	146786	50.00	ug/l	0.00
34) 1,4-Difluorobenzene	8.85	114	237240	50.00	ug/l	0.00
63) Chlorobenzene-d5	11.63	117	217955	50.00	ug/l	0.00
72) 1,4-Dichlorobenzene-d4	13.57	152	107314	50.00	ug/l	0.00

System Monitoring Compounds

33) 1,2-Dichloroethane-d4	8.31	65	96874	60.93	ug/l	0.00
Spiked Amount				50.000		
			Recovery	=	121.86%	
35) Dibromofluoromethane	7.88	113	80061	54.31	ug/l	0.00
Spiked Amount				50.000		
			Recovery	=	108.62%	
50) Toluene-d8	10.33	98	277590	47.49	ug/l	0.00
Spiked Amount				50.000		
			Recovery	=	94.98%	
62) 4-Bromofluorobenzene	12.63	95	99538	48.12	ug/l	0.00
Spiked Amount				50.000		
			Recovery	=	96.24%	

Target Compounds

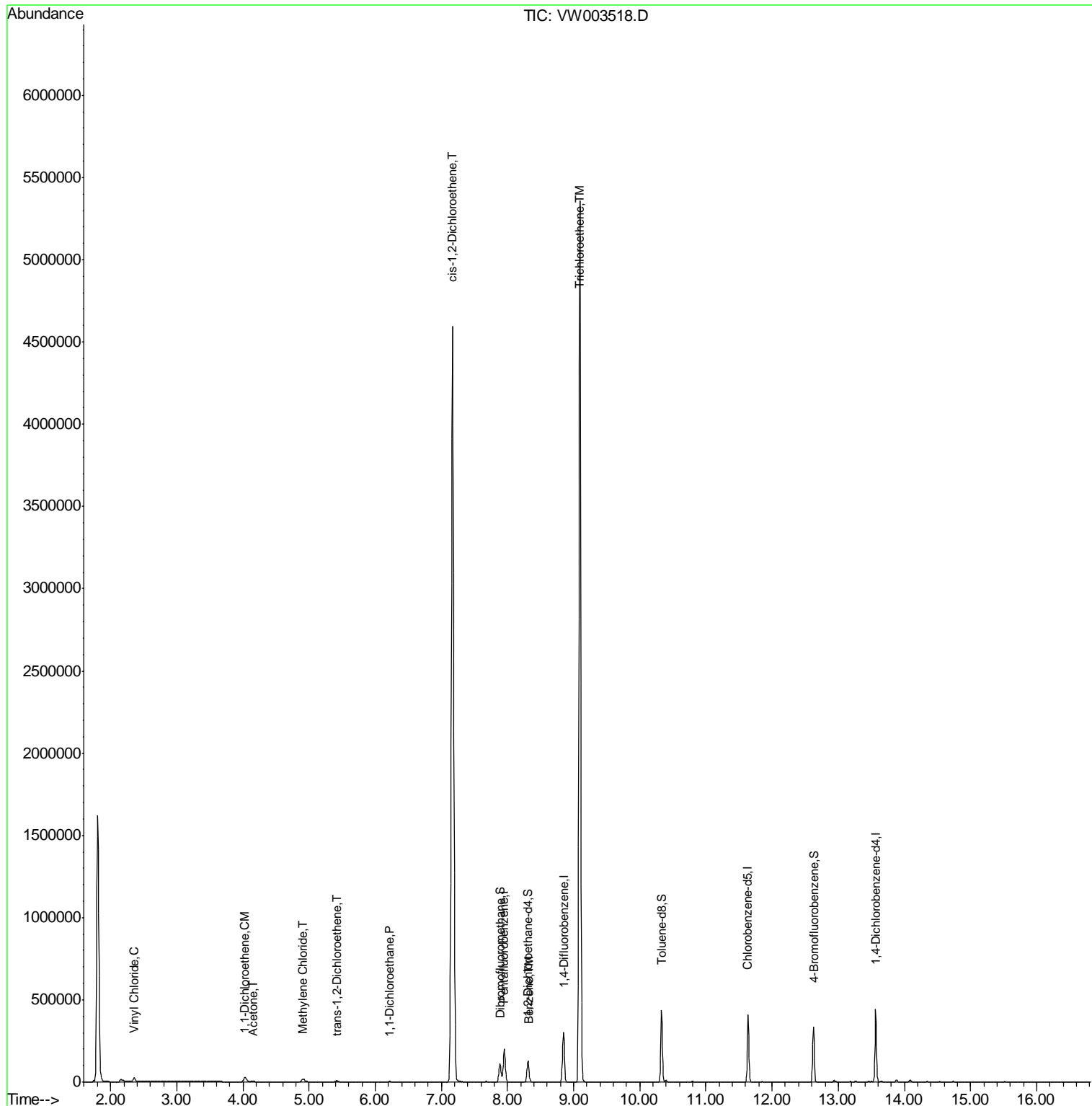
						Qvalue
4) Vinyl Chloride	2.36	62	21867	13.38	ug/l	99
12) 1,1-Dichloroethene	4.03	96	16930	12.74	ug/l	96
16) Acetone	4.14	43	14651	43.94	ug/l	95
20) Methylene Chloride	4.91	84	14805	7.32	ug/l	94
21) trans-1,2-Dichloroethene	5.42	96	4981	3.44	ug/l	90
24) 1,1-Dichloroethane	6.21	63	5133	1.87	ug/l	94
27) cis-1,2-Dichloroethene	7.17	96	2626587	1653.37	ug/l	93
40) Benzene	8.33	78	7643	1.21	ug/l	91
44) Trichloroethene	9.09	130	1799804	1075.52	ug/l	96

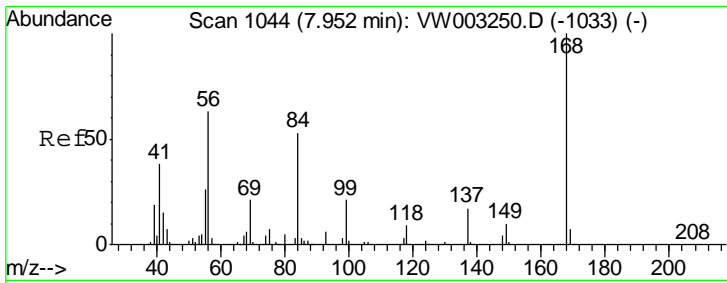
(#) = qualifier out of range (m) = manual integration (+) = signals summed

Data Path : Z:\VOASRV\HPCHEM1\MSVOA W\DATA\VW062418\
 Data File : VW003518.D
 Acq On : 24 Jun 2018 18:31
 Operator : SY/AP
 Sample : J3669-20
 Misc : 5.49G/5ML/MSVOA W/SOIL
 ALS Vial : 18 Sample Multiplier: 1

Instrument :
 MSVOA_W
 ClientSampleId :
 WP021SB475-29-31-180620

Quant Time: Jun 26 15:07:29 2018
 Quant Method : Z:\VOASRV\HPCHEM1\MSVOA_W\METHOD\82W061318S.M
 Quant Title : SW846 8260
 QLast Update : Sat Jun 16 05:18:54 2018
 Response via : Initial Calibration

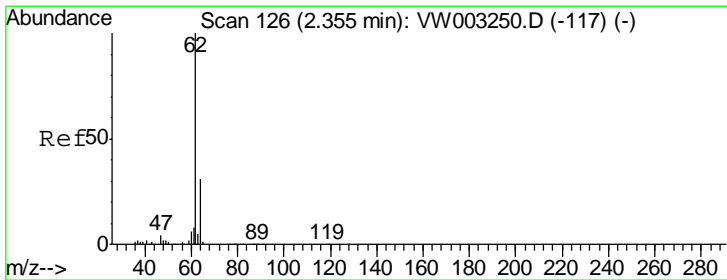
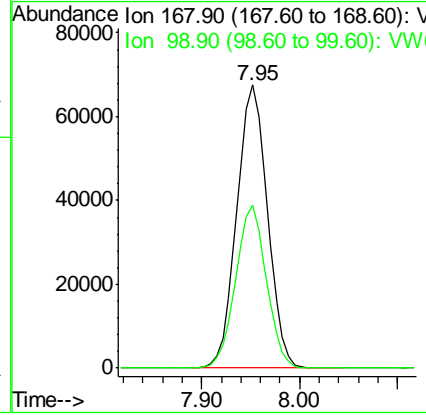
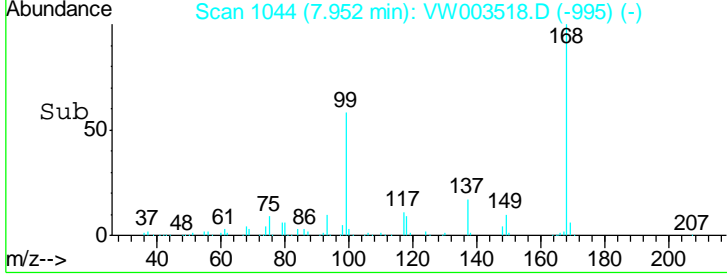
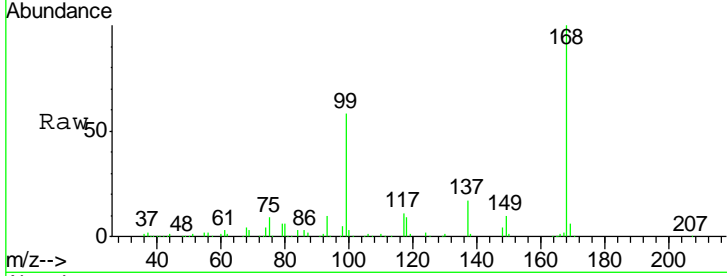




#1
 Pentafluorobenzene
 Concen: 50.00 ug/l
 RT: 7.95 min Scan# 1044
 Delta R.T. 0.00 min
 Lab File: VW003518.D
 Acq: 24 Jun 2018 18:31

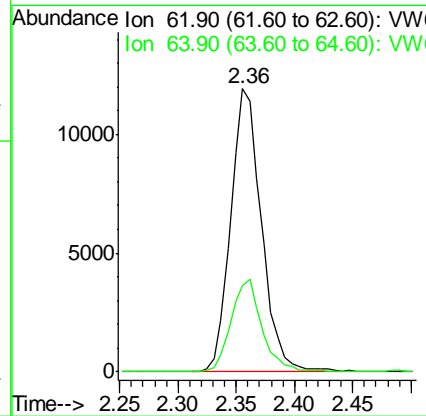
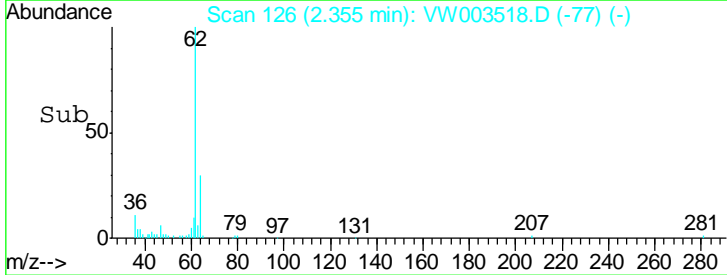
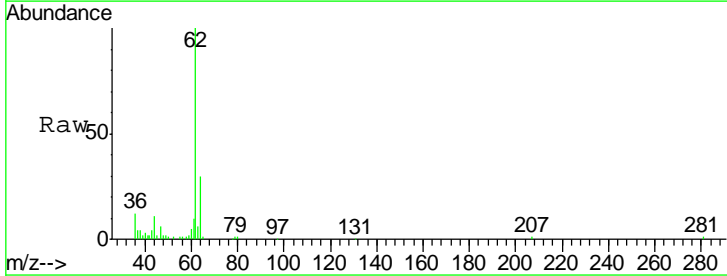
Instrument :
 MSVOA_W
ClientSampled :
 WP021SB475-29-31-180620

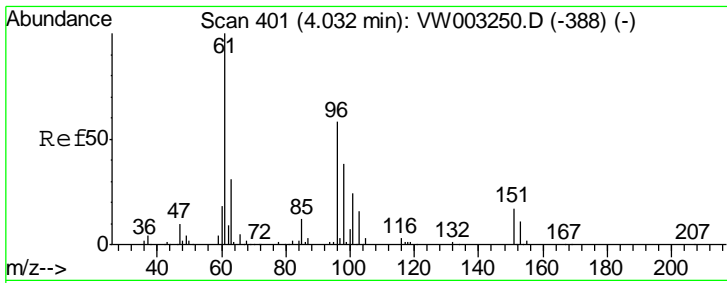
Tgt Ion	Resp	Lower	Upper
168	100		
99	57.5	45.5	68.3



#4
 Vinyl Chloride
 Concen: 13.38 ug/l
 RT: 2.36 min Scan# 126
 Delta R.T. 0.00 min
 Lab File: VW003518.D
 Acq: 24 Jun 2018 18:31

Tgt Ion	Resp	Lower	Upper
62	100		
64	30.5	24.9	37.3

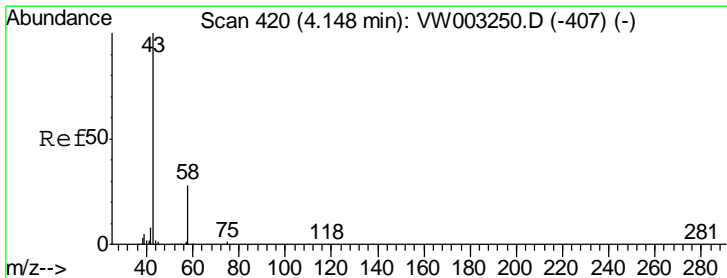
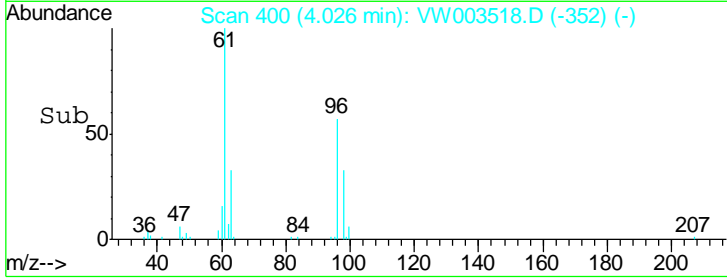
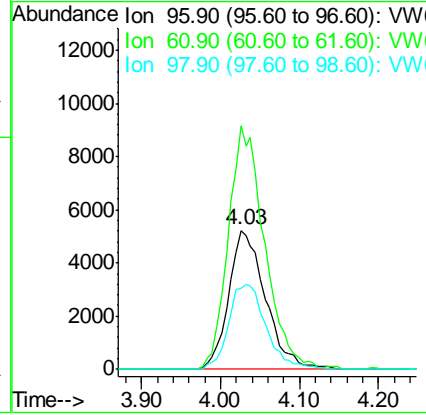
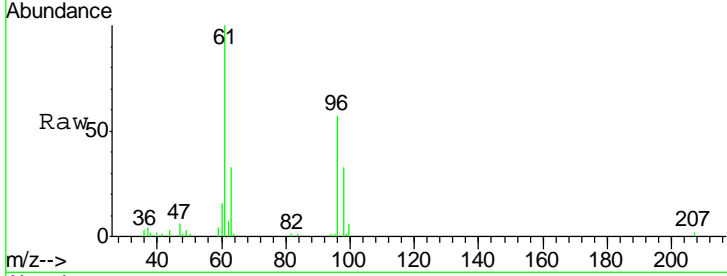




#12
 1,1-Dichloroethene
 Concen: 12.74 ug/l
 RT: 4.03 min Scan# 400
 Delta R.T. -0.01 min
 Lab File: VW003518.D
 Acq: 24 Jun 2018 18:31

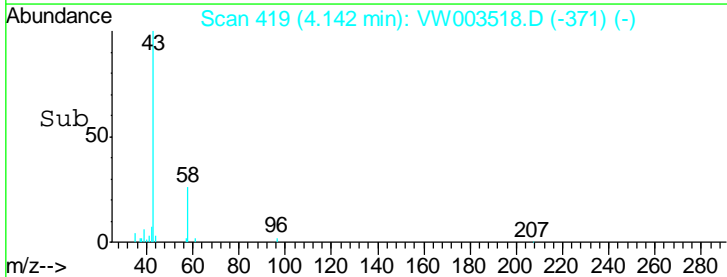
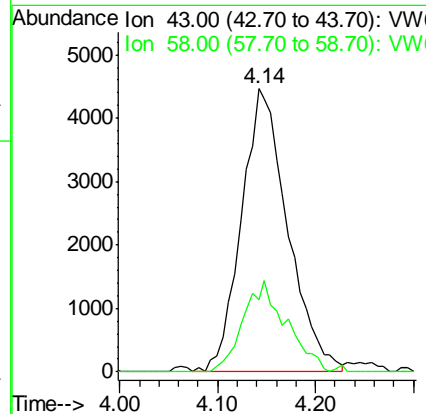
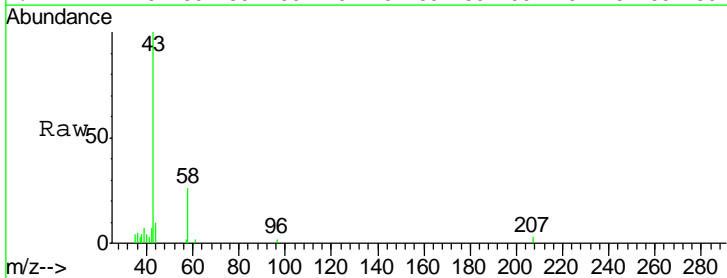
Instrument :
 MSVOA_W
 ClientSampleId :
 WP021SB475-29-31-180620

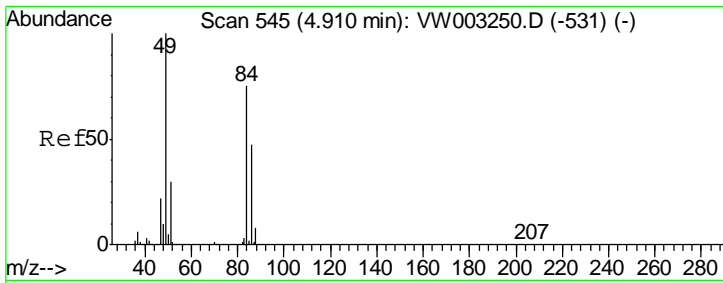
Tgt Ion	Resp	Lower	Upper
96	16930		
61	175.4	139.0	208.4
98	58.2	53.3	79.9



#16
 Acetone
 Concen: 43.94 ug/l
 RT: 4.14 min Scan# 419
 Delta R.T. -0.01 min
 Lab File: VW003518.D
 Acq: 24 Jun 2018 18:31

Tgt Ion	Resp	Lower	Upper
43	14651		
58	25.6	22.6	34.0

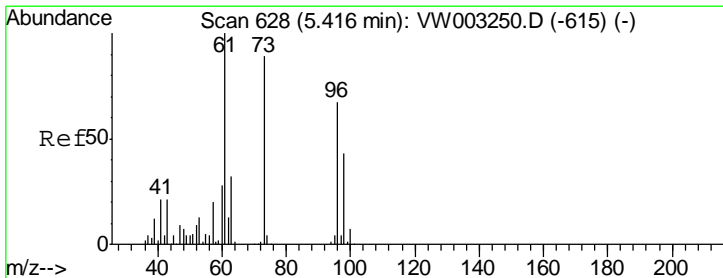
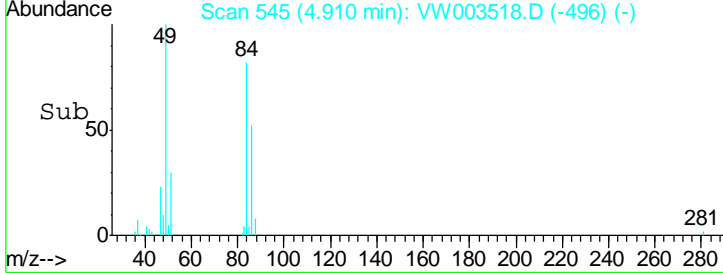
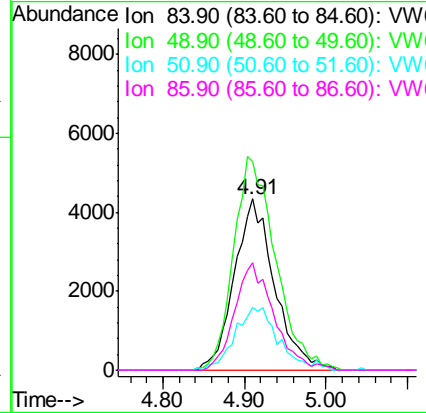
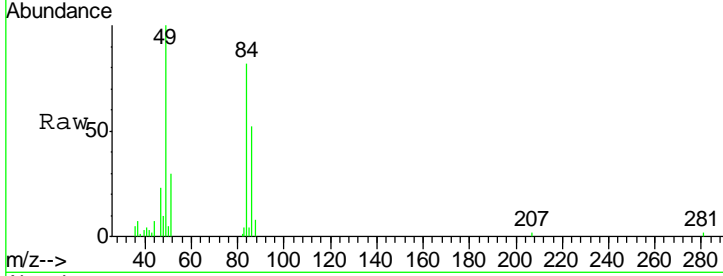




#20
 Methylene Chloride
 Concen: 7.32 ug/l
 RT: 4.91 min Scan# 545
 Delta R.T. 0.00 min
 Lab File: VW003518.D
 Acq: 24 Jun 2018 18:31

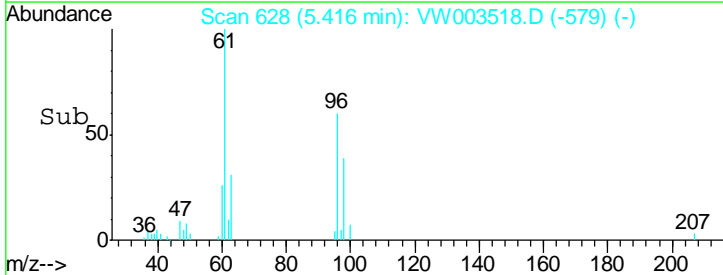
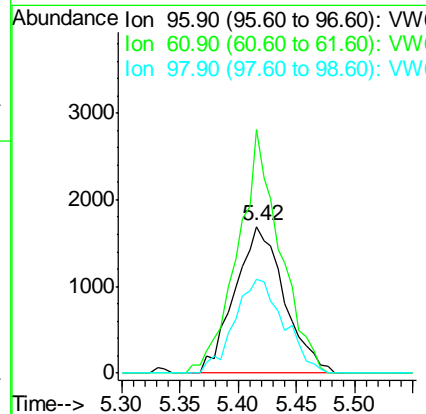
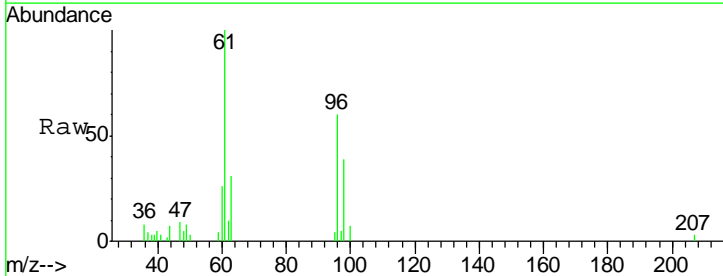
Instrument :
 MSVOA_W
ClientSampled :
 WP021SB475-29-31-180620

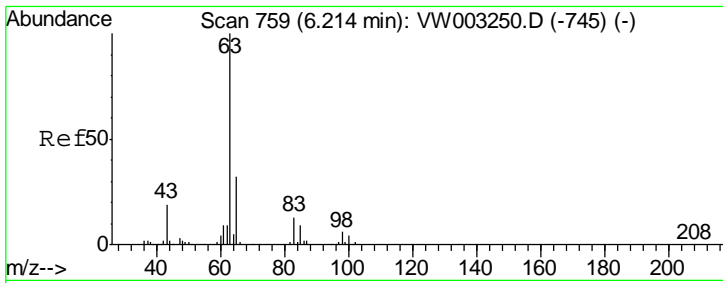
Tgt Ion	Resp	Lower	Upper
84	14805		
84	100		
49	122.0	106.3	159.5
51	36.3	32.0	48.0
86	63.1	49.9	74.9



#21
 trans-1,2-Dichloroethene
 Concen: 3.44 ug/l
 RT: 5.42 min Scan# 628
 Delta R.T. 0.00 min
 Lab File: VW003518.D
 Acq: 24 Jun 2018 18:31

Tgt Ion	Resp	Lower	Upper
96	4981		
96	100		
61	165.8	118.7	178.1
98	63.9	51.0	76.6

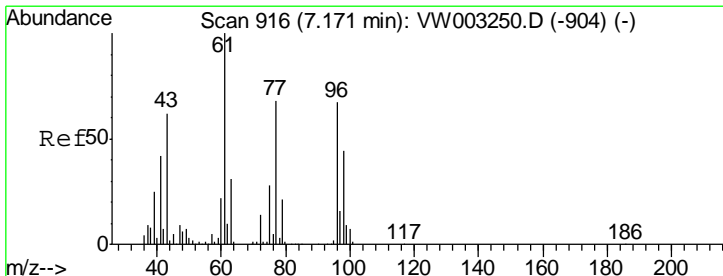
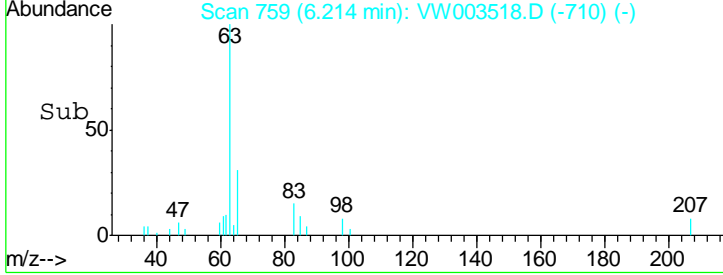
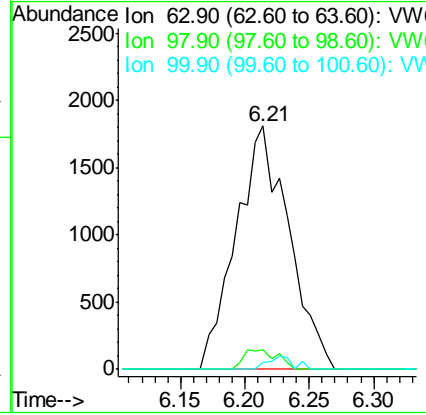
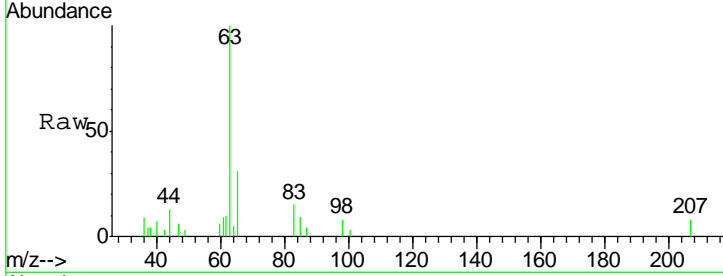




#24
 1,1-Dichloroethane
 Concen: 1.87 ug/l
 RT: 6.21 min Scan# 759
 Delta R.T. 0.00 min
 Lab File: VW003518.D
 Acq: 24 Jun 2018 18:31

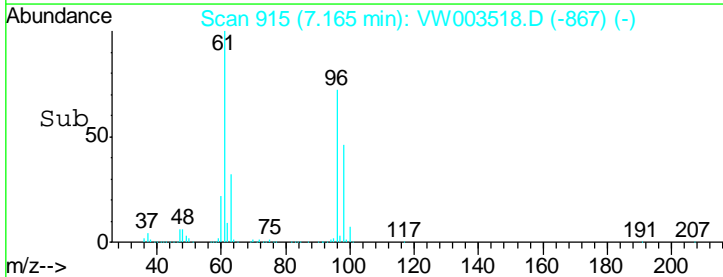
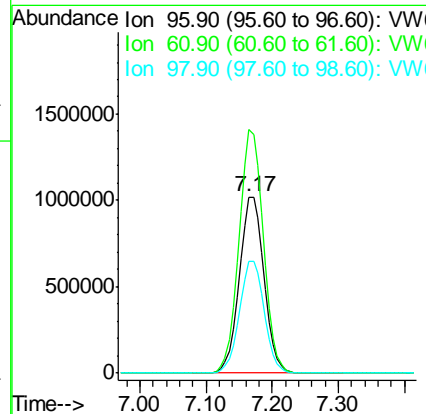
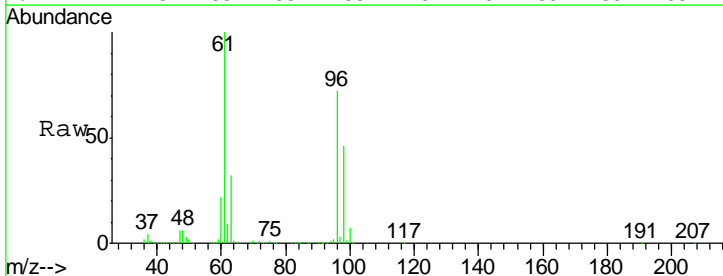
Instrument :
 MSVOA_W
 ClientSampleId :
 WP021SB475-29-31-180620

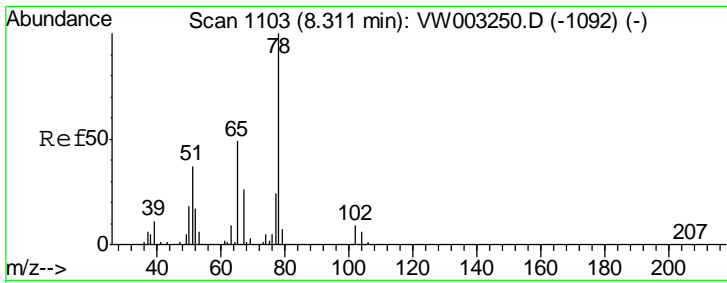
Tgt Ion	Resp	Lower	Upper
63	100		
98	8.1	2.8	8.3
100	2.8	2.1	6.5



#27
 cis-1,2-Dichloroethene
 Concen: 1653.37 ug/l
 RT: 7.17 min Scan# 915
 Delta R.T. -0.01 min
 Lab File: VW003518.D
 Acq: 24 Jun 2018 18:31

Tgt Ion	Resp	Lower	Upper
96	100		
61	136.9	0.0	298.8
98	63.7	0.0	130.4

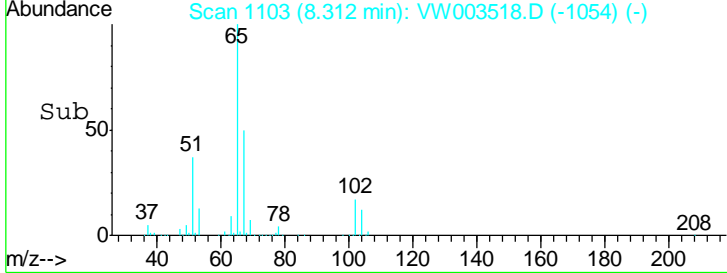
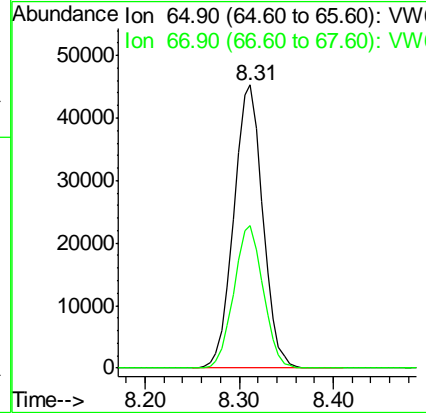
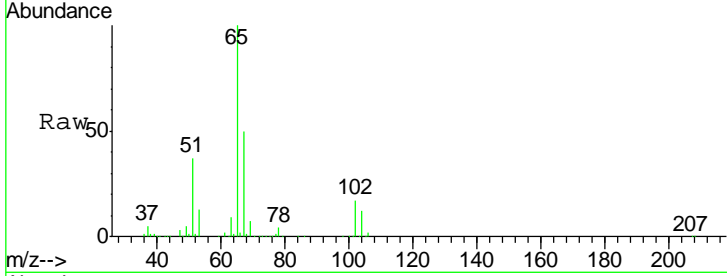




#33
 1,2-Dichloroethane-d4
 Concen: 60.93 ug/l
 RT: 8.31 min Scan# 1103
 Delta R.T. 0.00 min
 Lab File: VW003518.D
 Acq: 24 Jun 2018 18:31

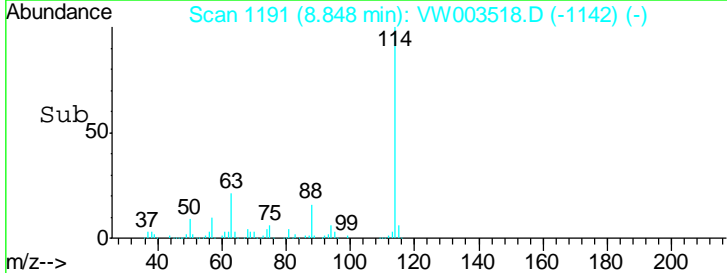
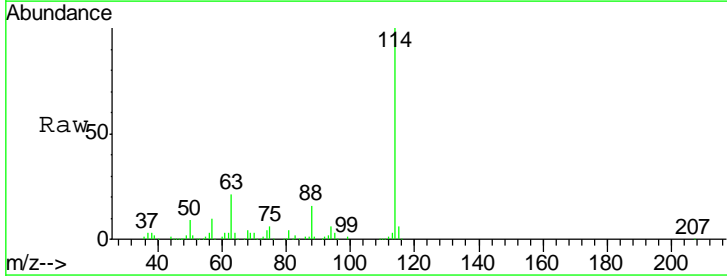
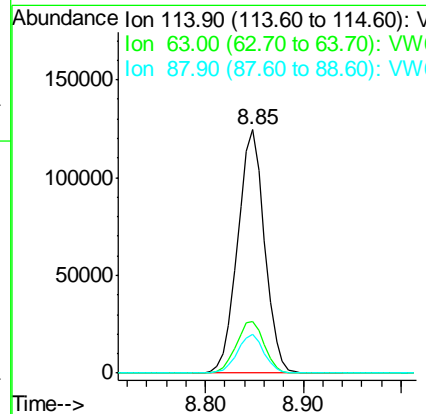
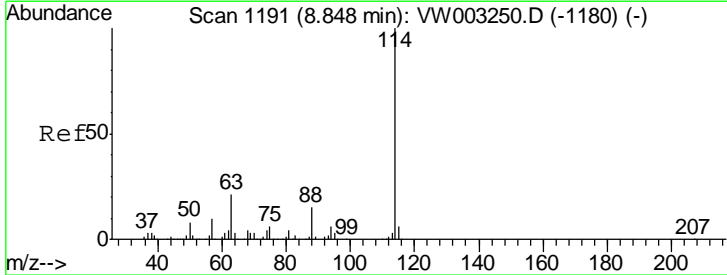
Instrument :
 MSVOA_W
ClientSampled :
 WP021SB475-29-31-180620

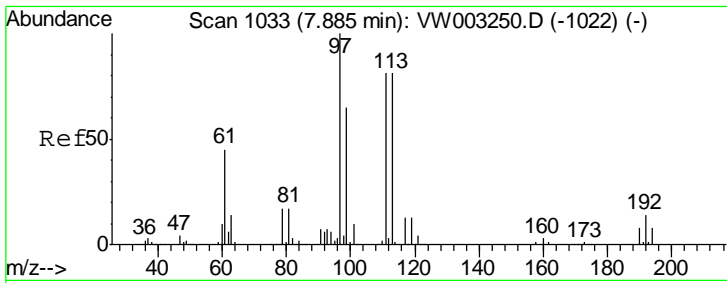
Tgt Ion	Resp	Lower	Upper
65	100		
67	50.9	0.0	104.2



#34
 1,4-Difluorobenzene
 Concen: 50.00 ug/l
 RT: 8.85 min Scan# 1191
 Delta R.T. 0.00 min
 Lab File: VW003518.D
 Acq: 24 Jun 2018 18:31

Tgt Ion	Resp	Lower	Upper
114	100		
63	21.4	0.0	43.0
88	16.1	0.0	29.6

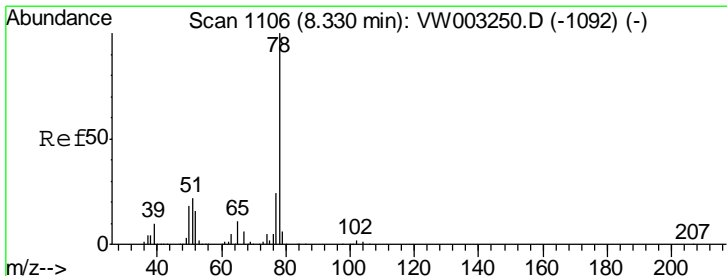
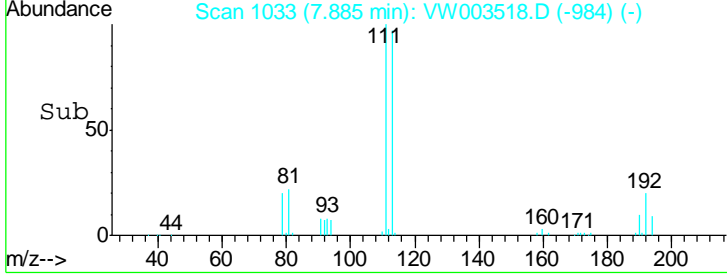
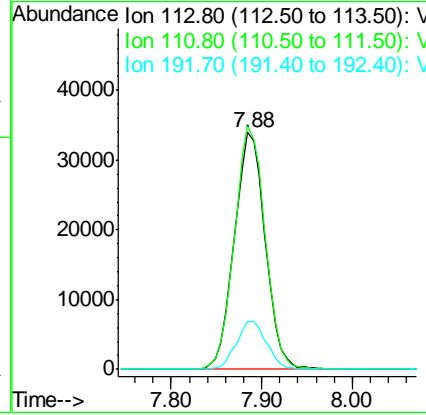
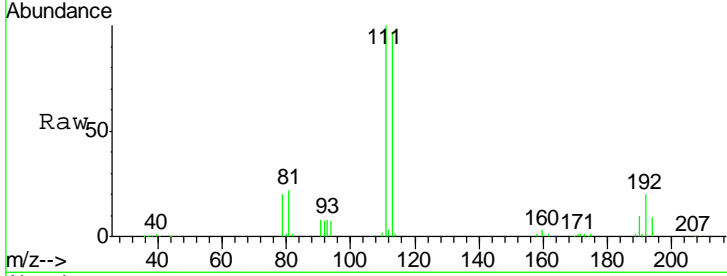




#35
 Dibromofluoromethane
 Concen: 54.31 ug/l
 RT: 7.88 min Scan# 1033
 Delta R.T. 0.00 min
 Lab File: VW003518.D
 Acq: 24 Jun 2018 18:31

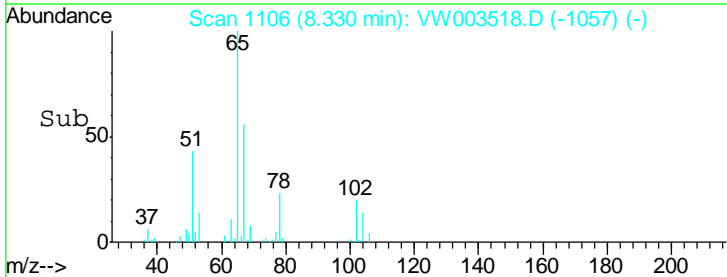
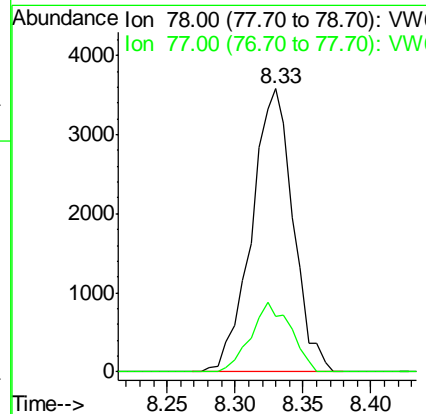
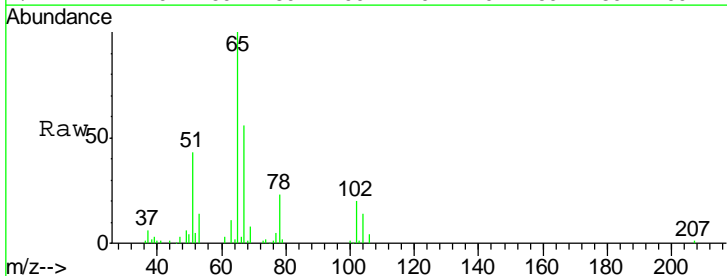
Instrument : MSVOA_W
 ClientSampled : WP021SB475-29-31-180620

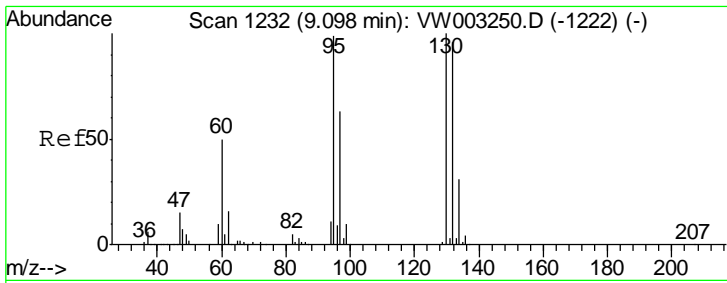
Tgt Ion	Resp	Lower	Upper
113	80061		
111	102.4	82.2	123.2
192	20.0	16.2	24.2



#40
 Benzene
 Concen: 1.21 ug/l
 RT: 8.33 min Scan# 1106
 Delta R.T. 0.00 min
 Lab File: VW003518.D
 Acq: 24 Jun 2018 18:31

Tgt Ion	Resp	Lower	Upper
78	7643		
77	19.5	19.0	28.6



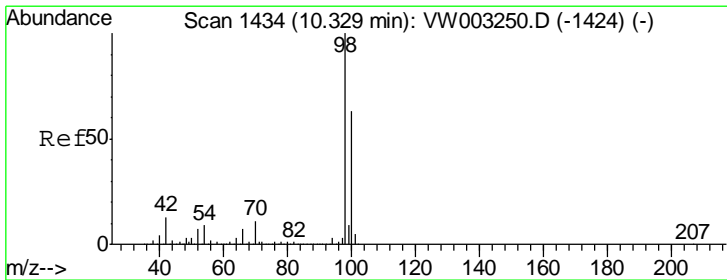
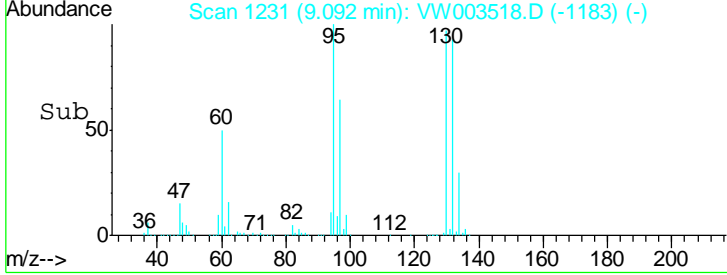
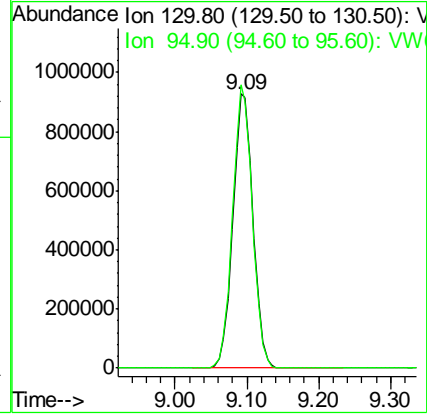
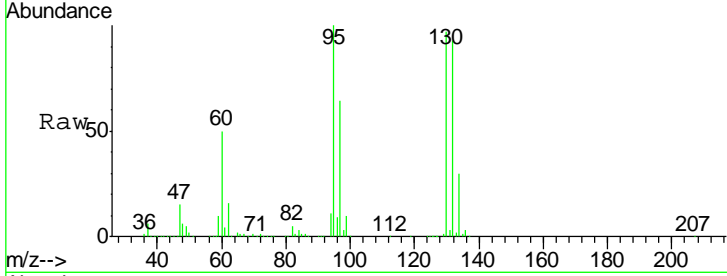


#44
 Trichloroethene
 Concen: 1075.52 ug/l
 RT: 9.09 min Scan# 1231
 Delta R.T. -0.01 min
 Lab File: VW003518.D
 Acq: 24 Jun 2018 18:31

Instrument :
 MSVOA_W
ClientSampled :
 WP021SB475-29-31-180620

Tgt Ion: 130 Resp: 1799804

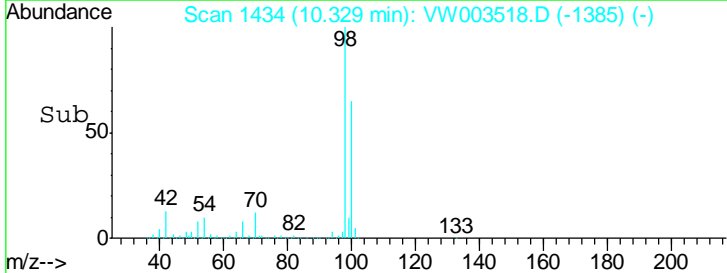
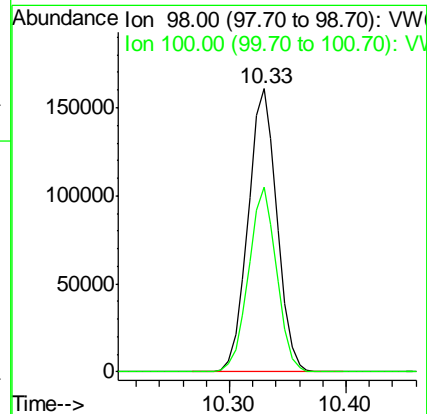
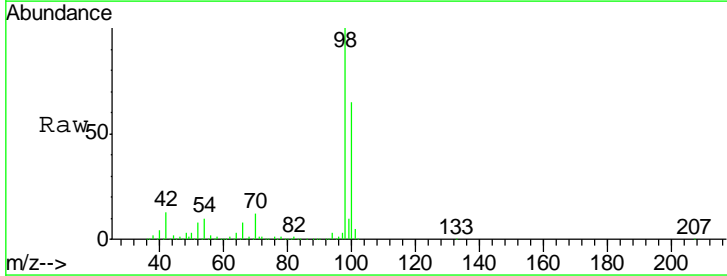
Ion	Ratio	Lower	Upper
130	100		
95	103.4	0.0	198.0

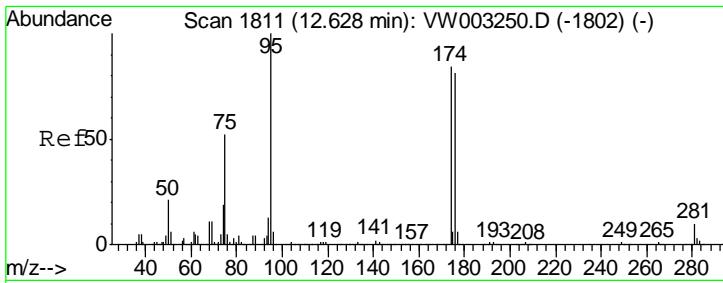


#50
 Toluene-d8
 Concen: 47.49 ug/l
 RT: 10.33 min Scan# 1434
 Delta R.T. 0.00 min
 Lab File: VW003518.D
 Acq: 24 Jun 2018 18:31

Tgt Ion: 98 Resp: 277590

Ion	Ratio	Lower	Upper
98	100		
100	63.3	50.8	76.2

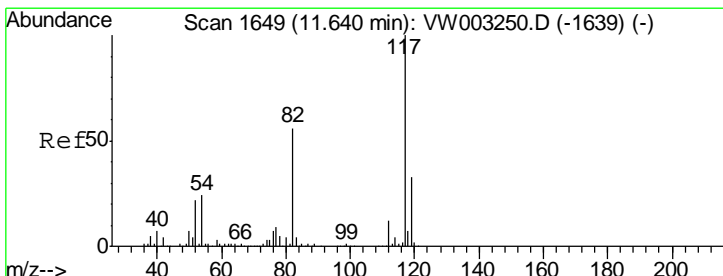
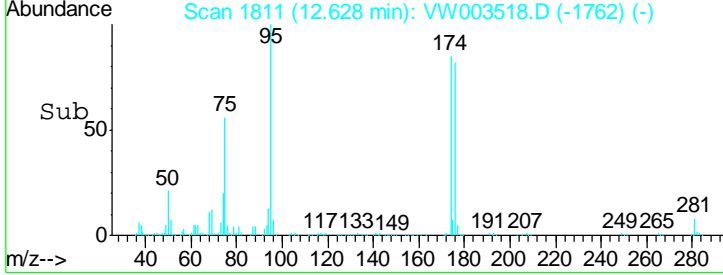
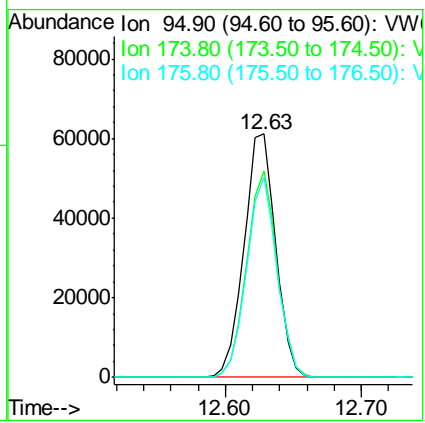
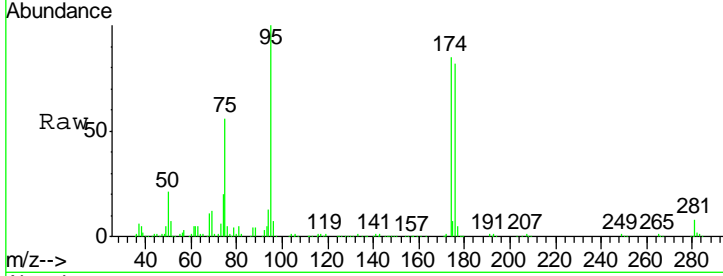




#62
 4-Bromofluorobenzene
 Concen: 48.12 ug/l
 RT: 12.63 min Scan# 1811
 Delta R.T. 0.00 min
 Lab File: VW003518.D
 Acq: 24 Jun 2018 18:31

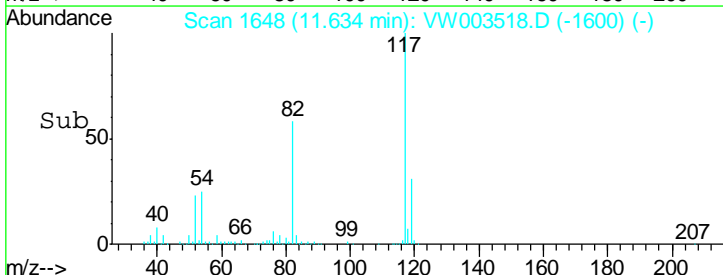
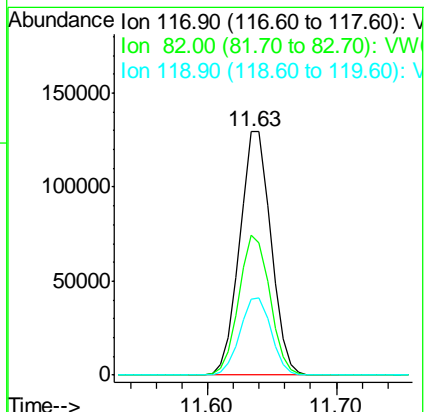
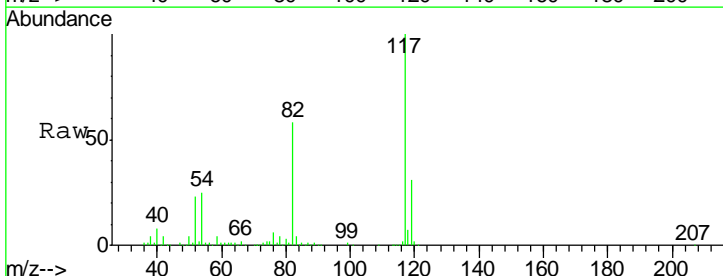
Instrument : MSVOA_W
 ClientSampled : WP021SB475-29-31-180620

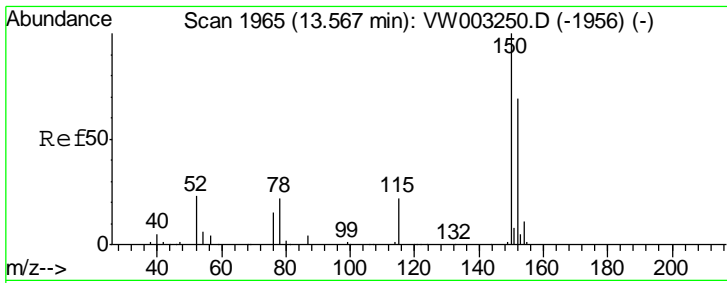
Tgt Ion	Resp	Lower	Upper
95	99538		
174	81.9	0.0	166.4
176	78.9	0.0	162.0



#63
 Chlorobenzene-d5
 Concen: 50.00 ug/l
 RT: 11.63 min Scan# 1648
 Delta R.T. -0.01 min
 Lab File: VW003518.D
 Acq: 24 Jun 2018 18:31

Tgt Ion	Resp	Lower	Upper
117	217955		
82	57.5	44.6	67.0
119	31.3	26.7	40.1





#72
 1,4-Dichlorobenzene-d4
 Concen: 50.00 ug/l
 RT: 13.57 min Scan# 1965
 Delta R.T. 0.00 min
 Lab File: VW003518.D
 Acq: 24 Jun 2018 18:31

Instrument : MSVOA_W
 ClientSampled : WP021SB475-29-31-180620

Tot Ion:152 Resp: 107314

Ion	Ratio	Lower	Upper
152	100		
115	58.7	29.3	88.0
150	156.4	0.0	349.6

