

Data Path : Z:\VOASRV\HPCHEM1\MSVOA W\DATA\VW062418\  
 Data File : VW003520.D  
 Acq On : 24 Jun 2018 19:23  
 Operator : SY/AP  
 Sample : J3669-22  
 Misc : 6.30G/5ML/MSVOA W/SOIL  
 ALS Vial : 20 Sample Multiplier: 1

Instrument :  
 MSVOA\_W  
 ClientSampleId :  
 WP021SB479-25-27-180620

Quant Time: Jun 25 01:16:40 2018  
 Quant Method : Z:\VOASRV\HPCHEM1\MSVOA\_W\METHOD\82W061318S.M  
 Quant Title : SW846 8260  
 QLast Update : Sat Jun 16 05:18:54 2018  
 Response via : Initial Calibration

Internal Standards	R.T.	QIon	Response	Conc	Units	Dev(Min)
1) Pentafluorobenzene	7.95	168	158170	50.00	ug/l	0.00
34) 1,4-Difluorobenzene	8.85	114	276489	50.00	ug/l	0.00
63) Chlorobenzene-d5	11.63	117	257314	50.00	ug/l	0.00
72) 1,4-Dichlorobenzene-d4	13.57	152	227549	50.00	ug/l	0.00

## System Monitoring Compounds

33) 1,2-Dichloroethane-d4	8.31	65	109810	64.10	ug/l	0.00
Spiked Amount				50.000		
				Recovery	=	128.20%
35) Dibromofluoromethane	7.88	113	92269	53.71	ug/l	0.00
Spiked Amount				50.000		
				Recovery	=	107.42%
50) Toluene-d8	10.33	98	379267	55.67	ug/l	0.00
Spiked Amount				50.000		
				Recovery	=	111.34%
62) 4-Bromofluorobenzene	12.62	95	301553	125.08	ug/l	0.00
Spiked Amount				50.000		
				Recovery	=	250.16%

## Target Compounds

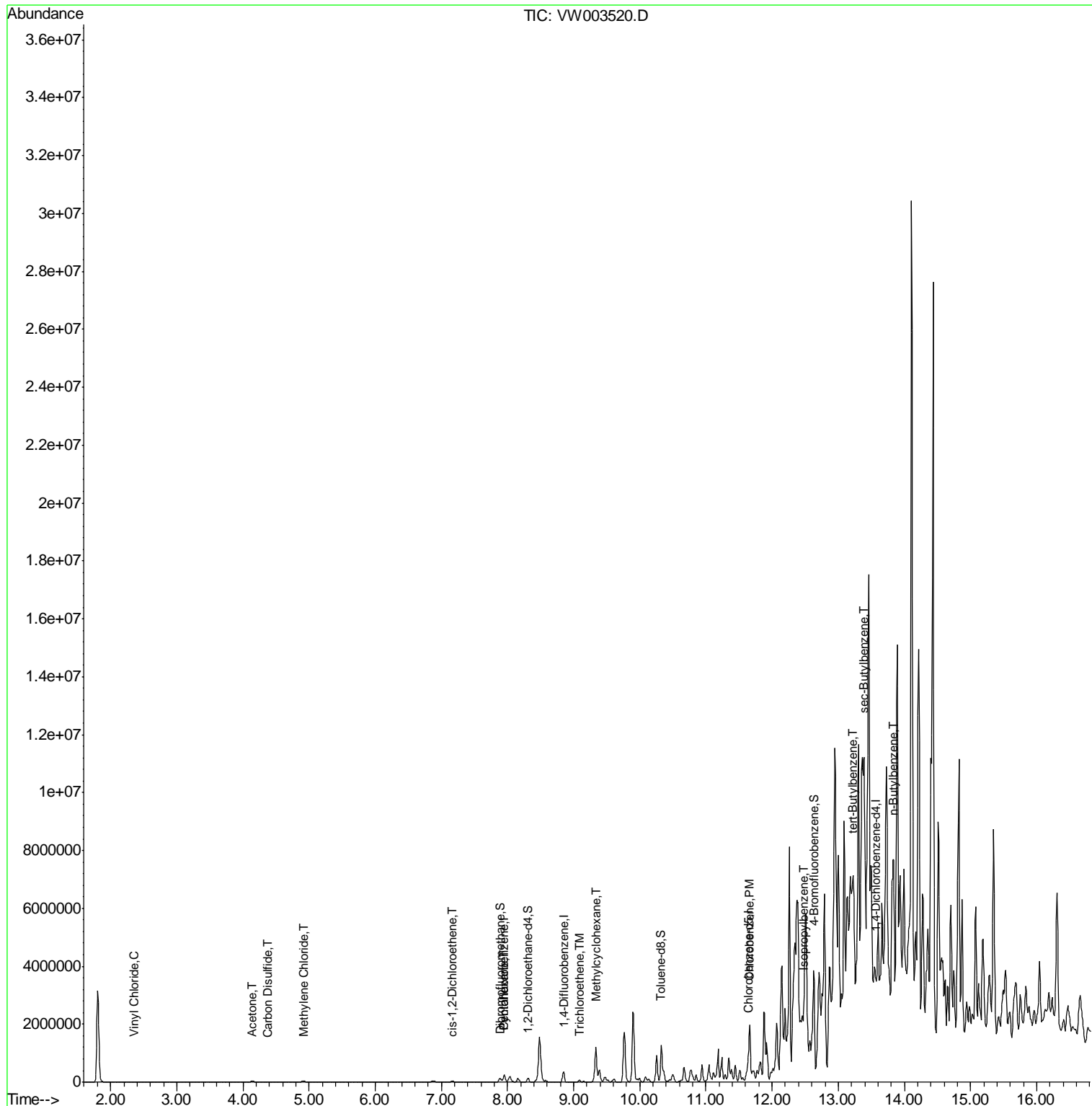
						Qvalue
4) Vinyl Chloride	2.36	62	6382	3.62	ug/l	90
16) Acetone	4.14	43	66834	186.00	ug/l	97
17) Carbon Disulfide	4.37	76	5370	1.27	ug/l	96
20) Methylene Chloride	4.92	84	21879	11.51	ug/l	95
27) cis-1,2-Dichloroethene	7.17	96	6298	3.68	ug/l	97
31) Cyclohexane	7.96	56	18163	6.56	ug/l #	87
39) Methylcyclohexane	9.34	83	350278	113.37	ug/l	91
44) Trichloroethene	9.10	130	9735	4.99	ug/l	95
65) Chlorobenzene	11.66	112	928806	173.34	ug/l	100
73) Isopropylbenzene	12.47	105	66444	4.20	ug/l	97
83) tert-Butylbenzene	13.21	119	900358	79.53	ug/l	96
85) sec-Butylbenzene	13.40	105	3088054	183.50	ug/l #	49
89) n-Butylbenzene	13.84	91	2817925	194.77	ug/l	92

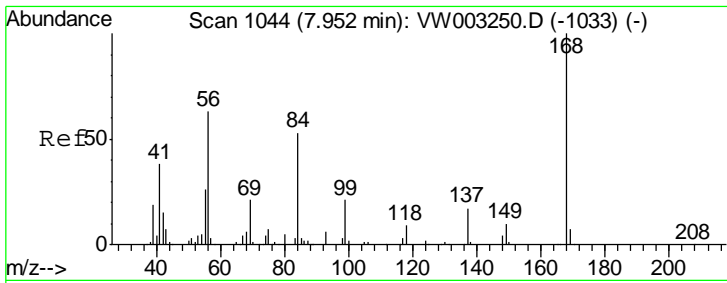
(#) = qualifier out of range (m) = manual integration (+) = signals summed

Data Path : Z:\VOASRV\HPCHEM1\MSVOA W\DATA\VW062418\  
 Data File : VW003520.D  
 Acq On : 24 Jun 2018 19:23  
 Operator : SY/AP  
 Sample : J3669-22  
 Misc : 6.30G/5ML/MSVOA W/SOIL  
 ALS Vial : 20 Sample Multiplier: 1

**Instrument :**  
 MSVOA\_W  
**Client Sampled :**  
 WP021SB479-25-27-180620

Quant Time: Jun 25 01:16:40 2018  
 Quant Method : Z:\VOASRV\HPCHEM1\MSVOA\_W\METHOD\82W061318S.M  
 Quant Title : SW846 8260  
 QLast Update : Sat Jun 16 05:18:54 2018  
 Response via : Initial Calibration

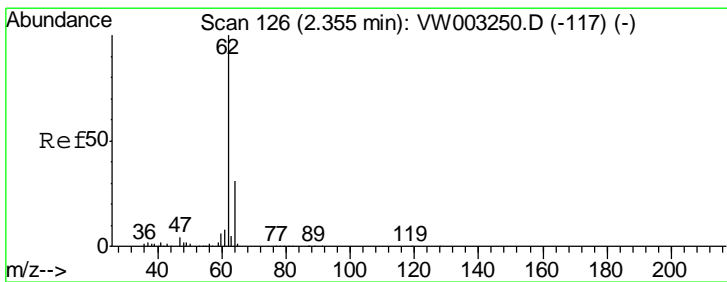
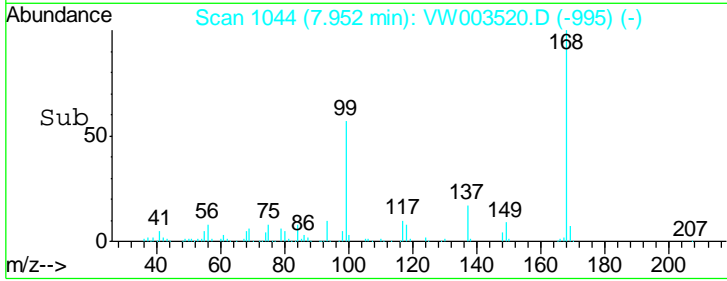
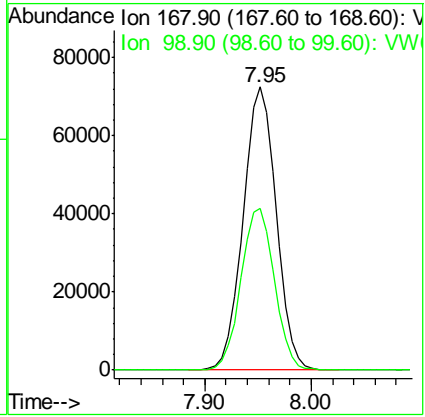
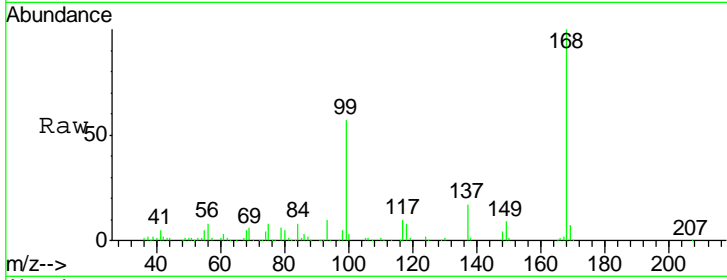




#1  
 Pentafluorobenzene  
 Concen: 50.00 ug/l  
 RT: 7.95 min Scan# 1044  
 Delta R.T. 0.00 min  
 Lab File: VW003520.D  
 Acq: 24 Jun 2018 19:23

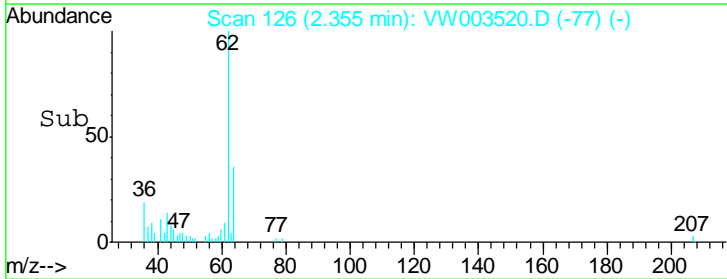
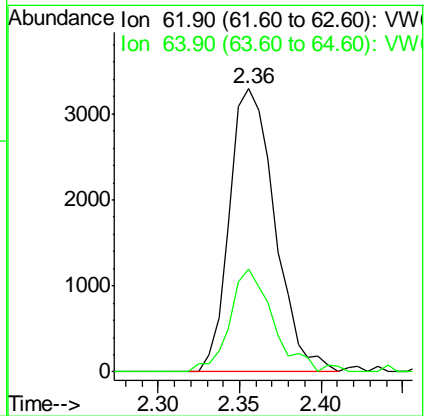
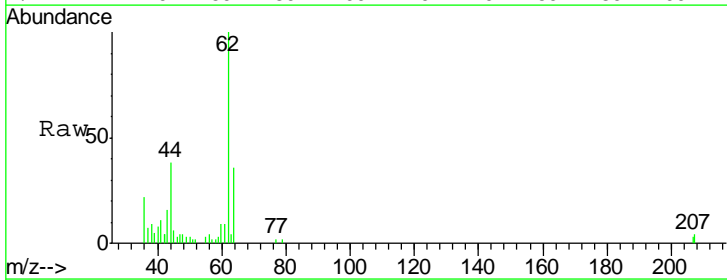
Instrument : MSVOA\_W  
 ClientSampled : WP021SB479-25-27-180620

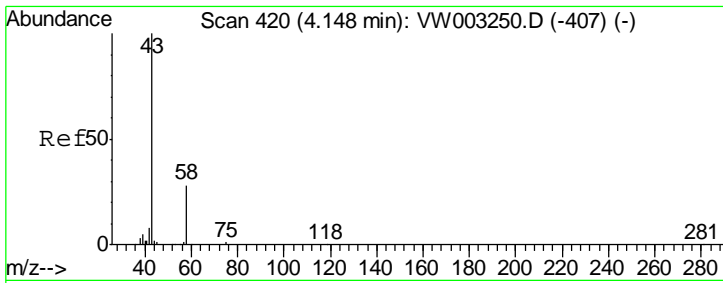
Tgt Ion	Resp	Lower	Upper
168	158170		
99	57.1	45.5	68.3



#4  
 Vinyl Chloride  
 Concen: 3.62 ug/l  
 RT: 2.36 min Scan# 126  
 Delta R.T. 0.00 min  
 Lab File: VW003520.D  
 Acq: 24 Jun 2018 19:23

Tgt Ion	Resp	Lower	Upper
62	6382		
64	36.3	24.9	37.3

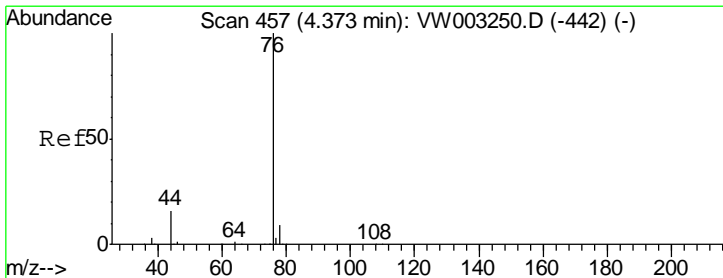
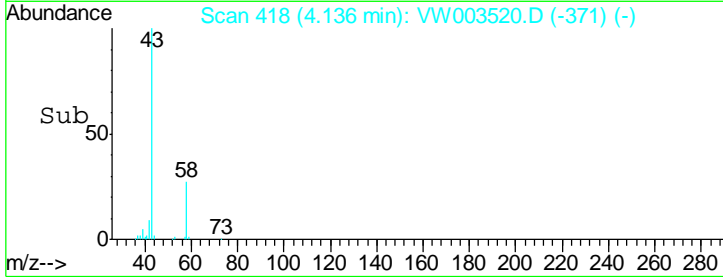
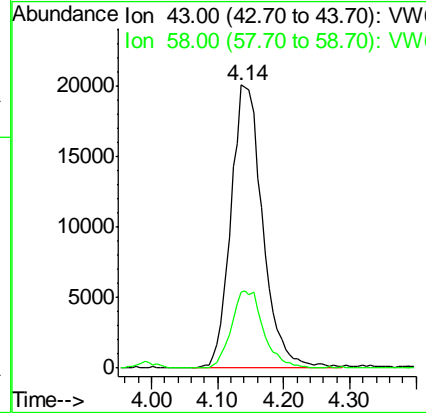
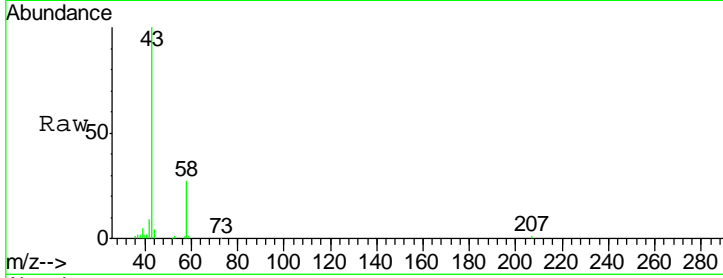




#16  
 Acetone  
 Concen: 186.00 ug/l  
 RT: 4.14 min Scan# 418  
 Delta R.T. -0.01 min  
 Lab File: VW003520.D  
 Acq: 24 Jun 2018 19:23

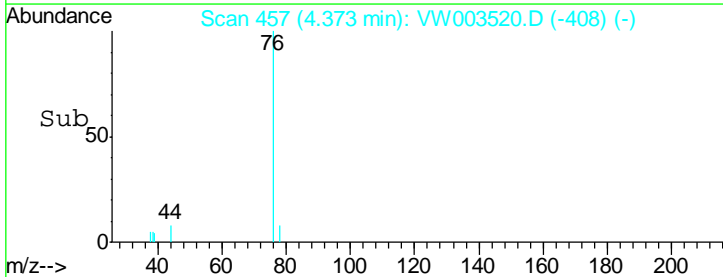
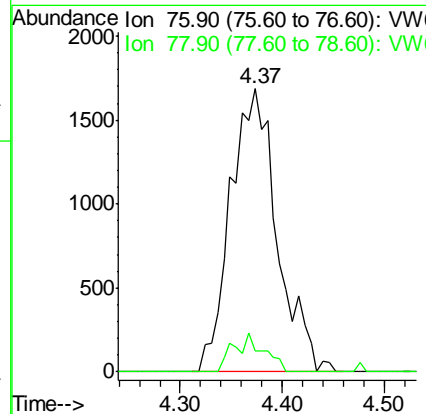
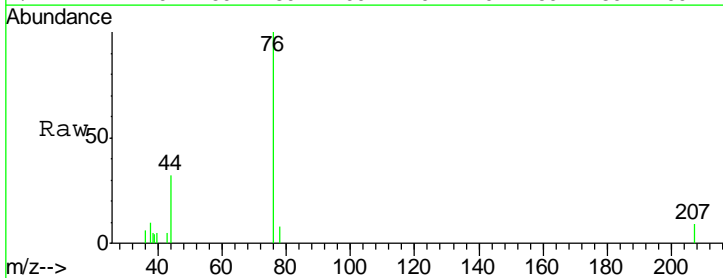
**Instrument :**  
 MSVOA\_W  
**ClientSampled :**  
 WP021SB479-25-27-180620

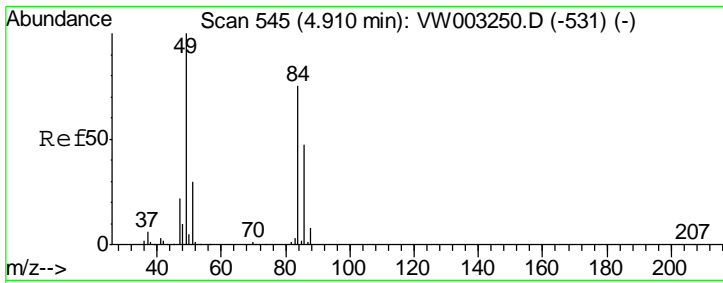
Tgt Ion	Resp	Lower	Upper
43	66834		
58	26.8	22.6	34.0



#17  
 Carbon Disulfide  
 Concen: 1.27 ug/l  
 RT: 4.37 min Scan# 457  
 Delta R.T. 0.00 min  
 Lab File: VW003520.D  
 Acq: 24 Jun 2018 19:23

Tgt Ion	Resp	Lower	Upper
76	5370		
78	7.6	7.1	10.7

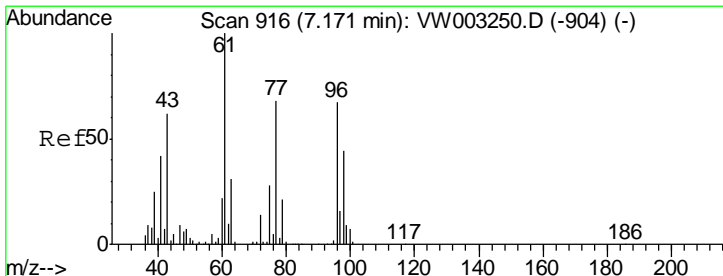
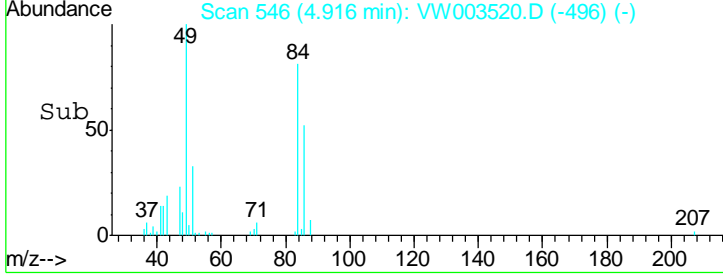
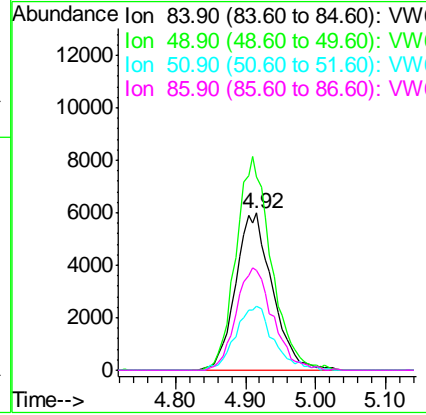
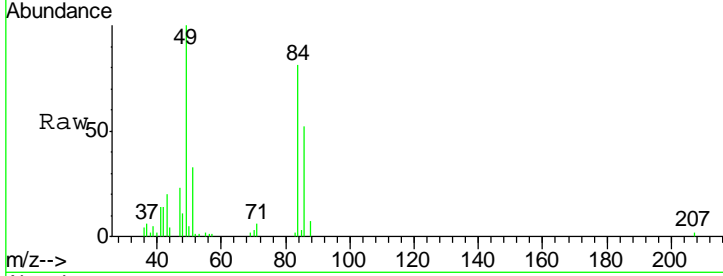




#20  
Methylene Chloride  
Concen: 11.51 ug/l  
RT: 4.92 min Scan# 546  
Delta R.T. 0.01 min  
Lab File: VW003520.D  
Acq: 24 Jun 2018 19:23

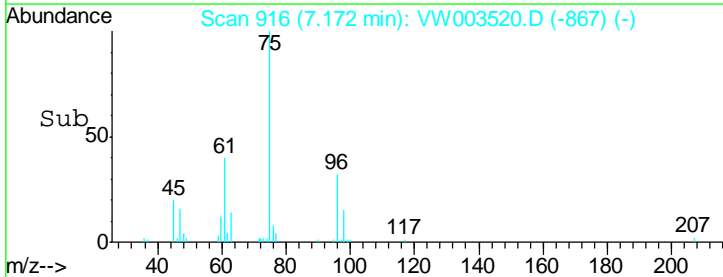
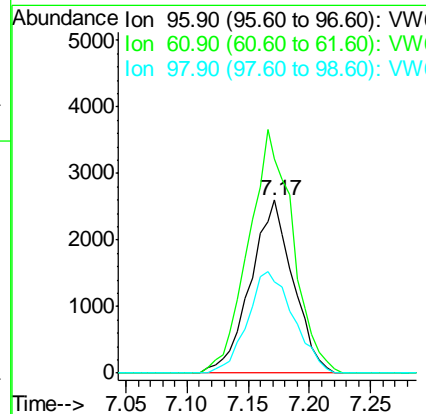
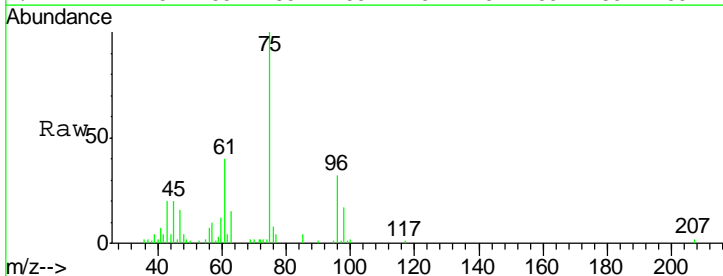
Instrument :  
MSVOA\_W  
ClientSampled :  
WP021SB479-25-27-180620

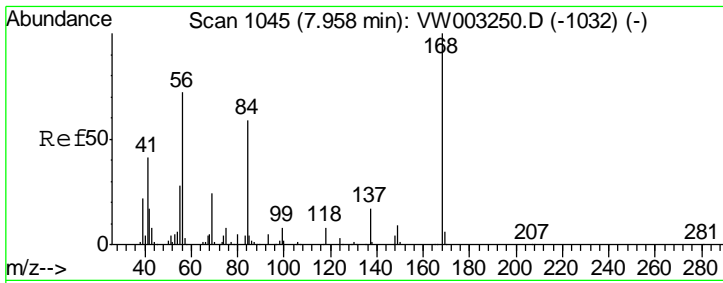
Tgt Ion	Resp	Lower	Upper
84	100		
49	123.3	106.3	159.5
51	40.7	32.0	48.0
86	63.9	49.9	74.9



#27  
cis-1,2-Dichloroethene  
Concen: 3.68 ug/l  
RT: 7.17 min Scan# 916  
Delta R.T. 0.00 min  
Lab File: VW003520.D  
Acq: 24 Jun 2018 19:23

Tgt Ion	Resp	Lower	Upper
96	100		
61	145.6	0.0	298.8
98	63.1	0.0	130.4

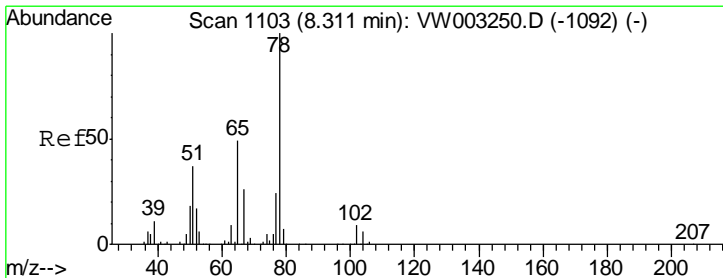
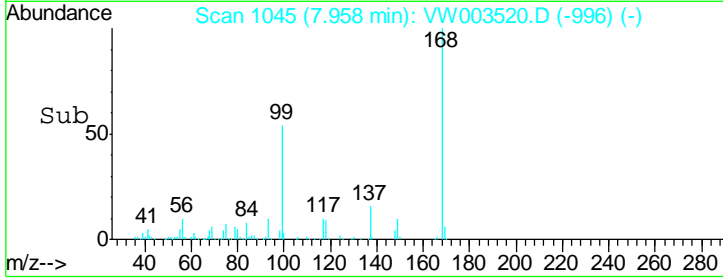
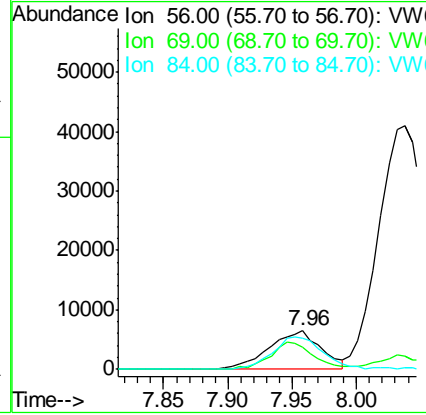
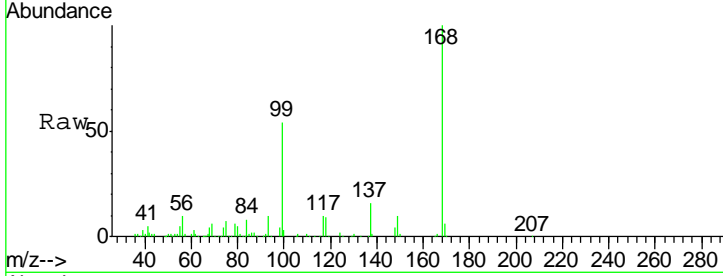




#31  
 Cyclohexane  
 Concen: 6.56 ug/l  
 RT: 7.96 min Scan# 1045  
 Delta R.T. 0.00 min  
 Lab File: VW003520.D  
 Acq: 24 Jun 2018 19:23

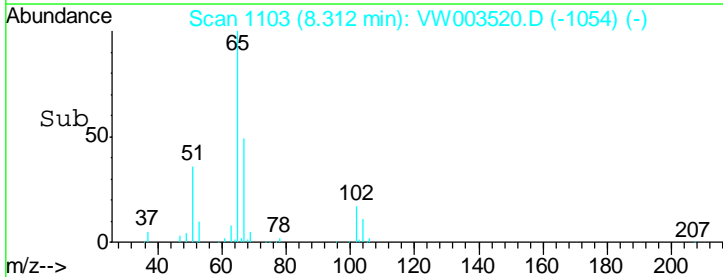
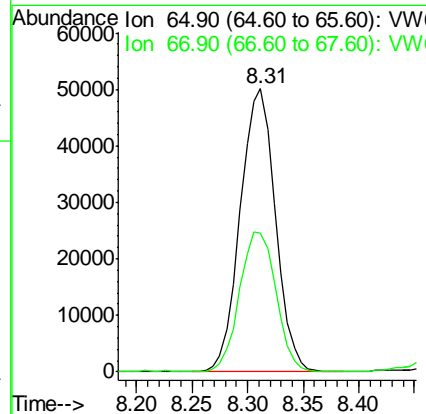
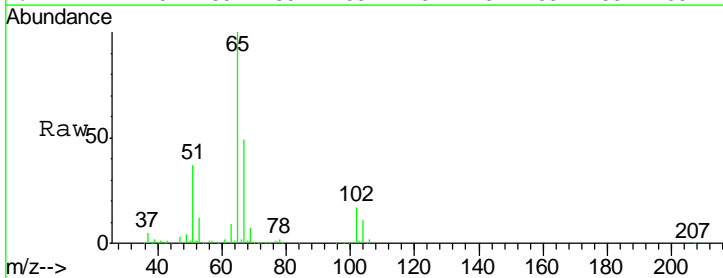
Instrument :  
 MSVOA\_W  
 ClientSampled :  
 WP021SB479-25-27-180620

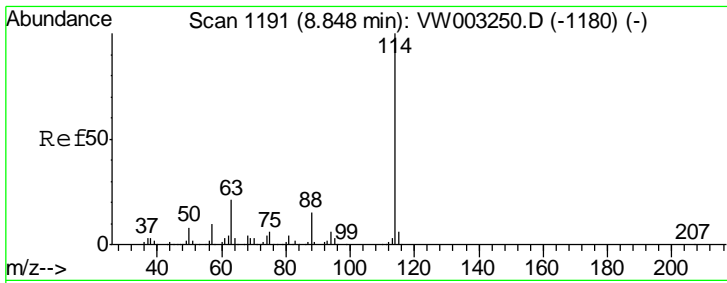
Tgt Ion	Resp	Lower	Upper
56	18163		
69	57.3	26.3	39.5#
84	81.9	65.7	98.5



#33  
 1,2-Dichloroethane-d4  
 Concen: 64.10 ug/l  
 RT: 8.31 min Scan# 1103  
 Delta R.T. 0.00 min  
 Lab File: VW003520.D  
 Acq: 24 Jun 2018 19:23

Tgt Ion	Resp	Lower	Upper
65	109810		
67	51.5	0.0	104.2

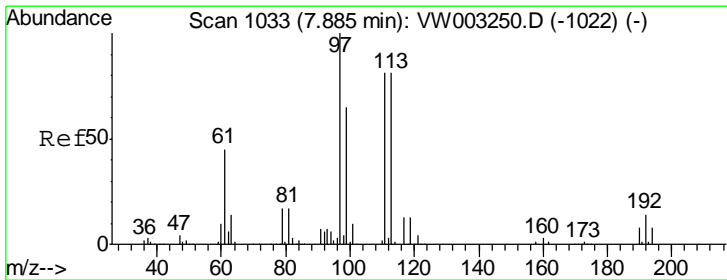
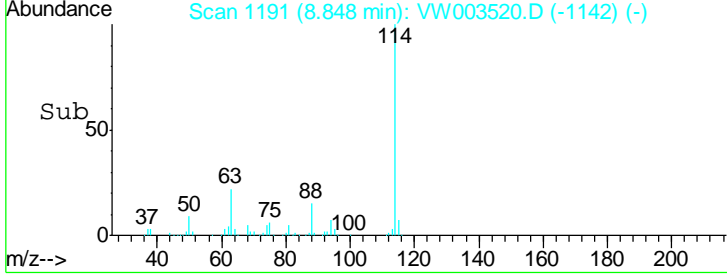
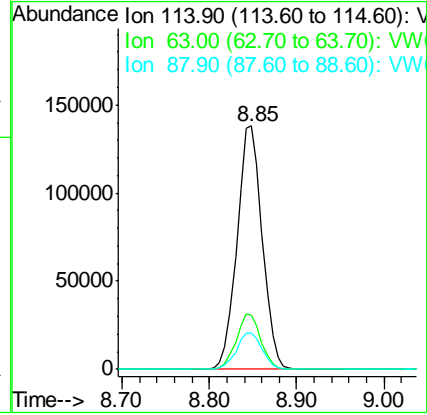
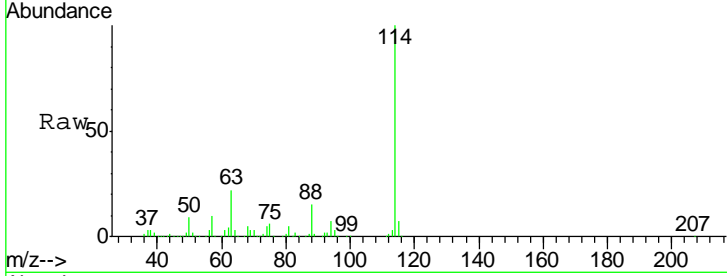




#34  
 1,4-Difluorobenzene  
 Concen: 50.00 ug/l  
 RT: 8.85 min Scan# 1191  
 Delta R.T. 0.00 min  
 Lab File: VW003520.D  
 Acq: 24 Jun 2018 19:23

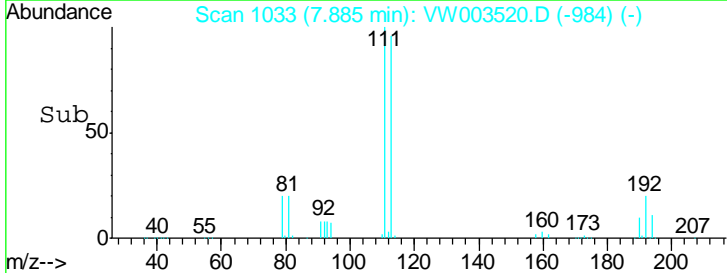
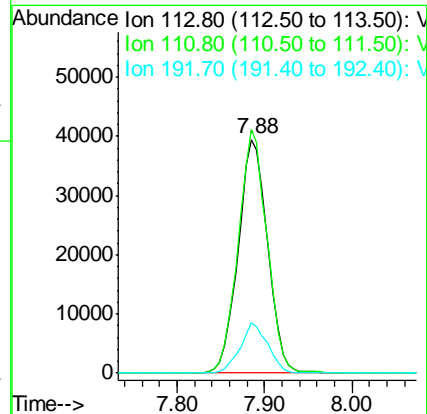
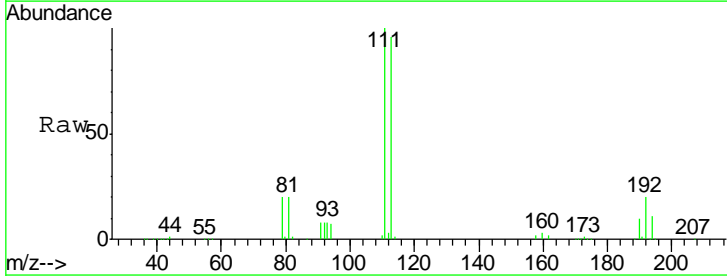
Instrument :  
 MSVOA\_W  
 ClientSampled :  
 WP021SB479-25-27-180620

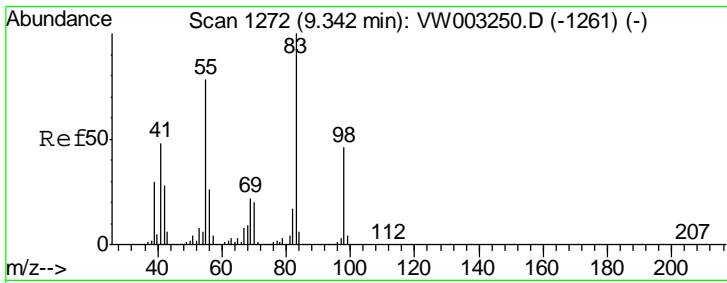
Tgt Ion	Resp	Lower	Upper
114	100		
63	22.2	0.0	43.0
88	15.1	0.0	29.6



#35  
 Dibromofluoromethane  
 Concen: 53.71 ug/l  
 RT: 7.88 min Scan# 1033  
 Delta R.T. 0.00 min  
 Lab File: VW003520.D  
 Acq: 24 Jun 2018 19:23

Tgt Ion	Resp	Lower	Upper
113	100		
111	102.1	82.2	123.2
192	20.1	16.2	24.2

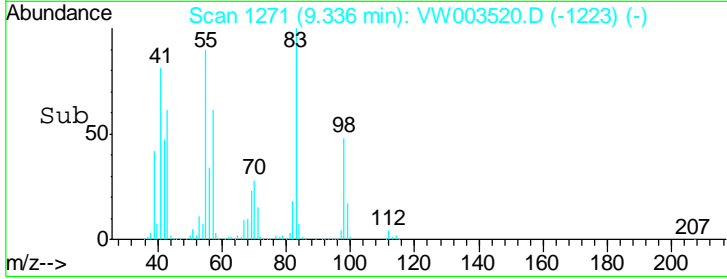
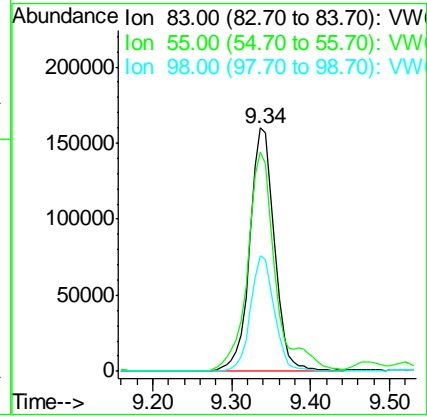
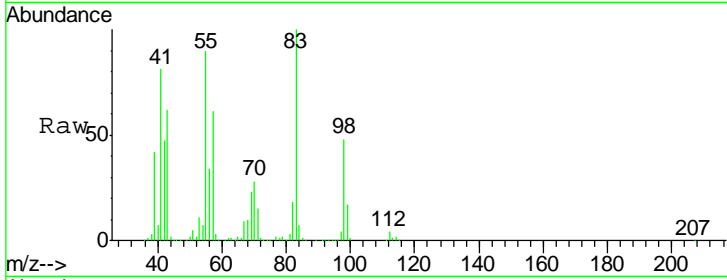




#39  
 Methylcyclohexane  
 Concen: 113.37 ug/l  
 RT: 9.34 min Scan# 1271  
 Delta R.T. -0.01 min  
 Lab File: VW003520.D  
 Acq: 24 Jun 2018 19:23

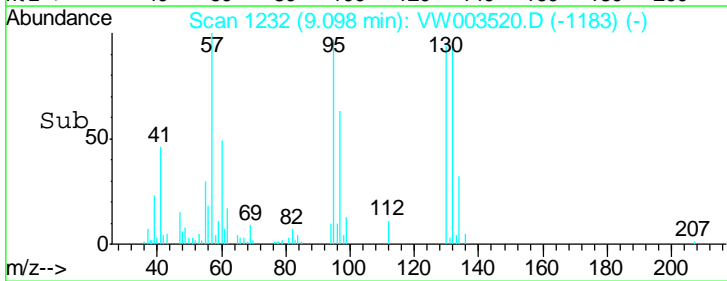
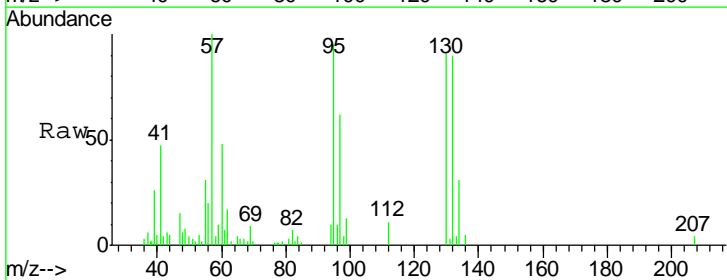
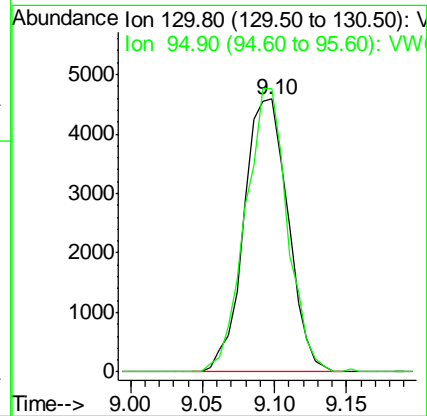
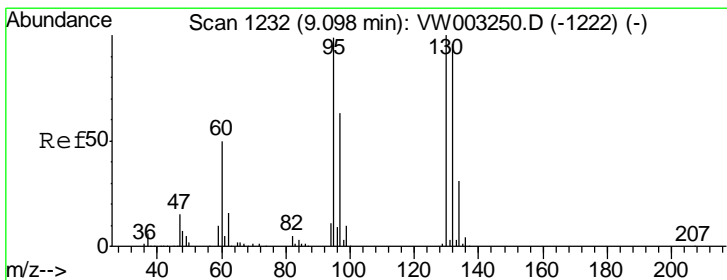
**Instrument :**  
 MSVOA\_W  
**ClientSampled :**  
 WP021SB479-25-27-180620

Tgt Ion	Resp	Lower	Upper
83	100		
55	90.1	62.6	93.8
98	47.5	37.0	55.4

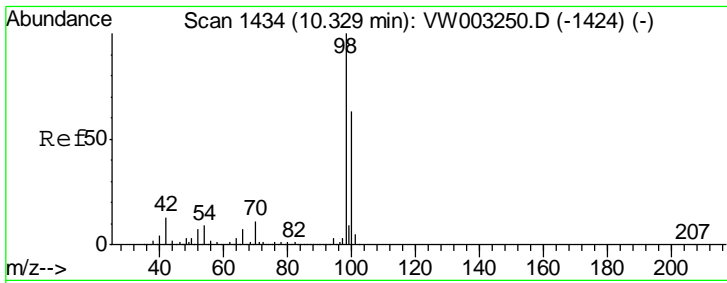


#44  
 Trichloroethene  
 Concen: 4.99 ug/l  
 RT: 9.10 min Scan# 1232  
 Delta R.T. 0.00 min  
 Lab File: VW003520.D  
 Acq: 24 Jun 2018 19:23

Tgt Ion	Resp	Lower	Upper
130	100		
95	103.7	0.0	198.0



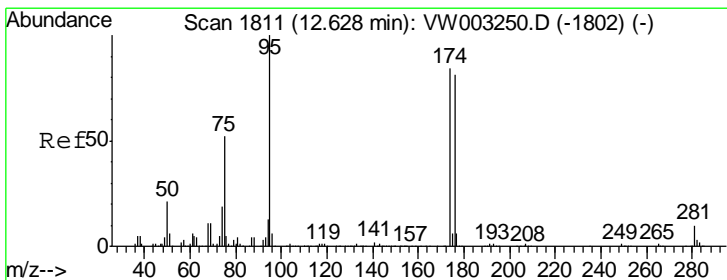
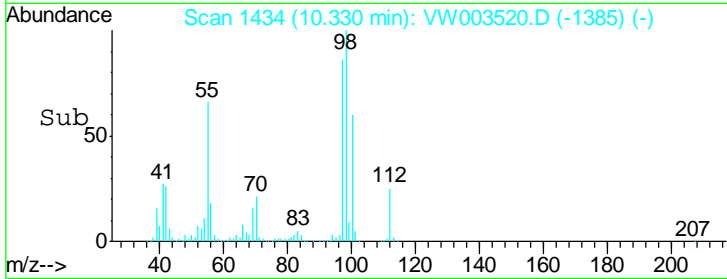
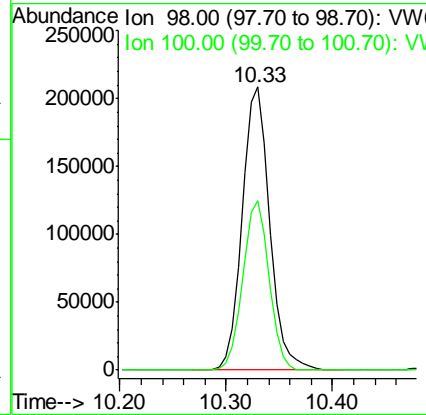
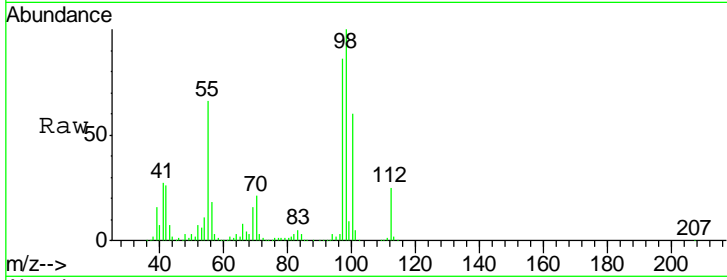




#50  
 Toluene-d8  
 Concen: 55.67 ug/l  
 RT: 10.33 min Scan# 1434  
 Delta R.T. 0.00 min  
 Lab File: VW003520.D  
 Acq: 24 Jun 2018 19:23

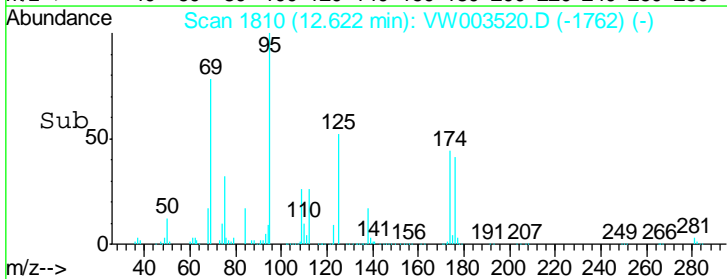
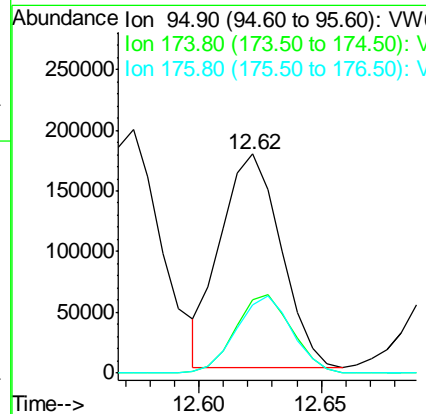
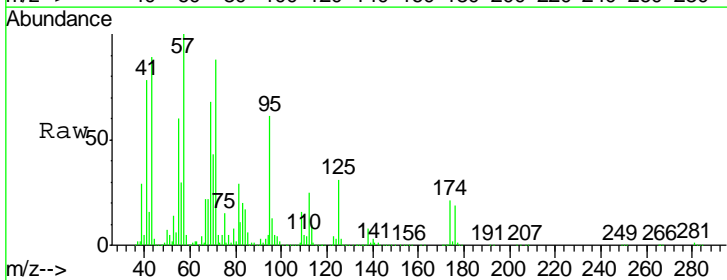
**Instrument :**  
 MSVOA\_W  
**ClientSampled :**  
 WP021SB479-25-27-180620

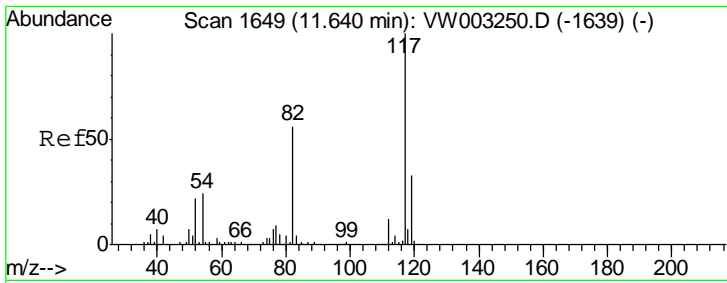
Tgt Ion	Resp	Lower	Upper
98	379267		
100	100		
100	56.8	50.8	76.2



#62  
 4-Bromofluorobenzene  
 Concen: 125.08 ug/l  
 RT: 12.62 min Scan# 1810  
 Delta R.T. -0.01 min  
 Lab File: VW003520.D  
 Acq: 24 Jun 2018 19:23

Tgt Ion	Resp	Lower	Upper
95	301553		
95	100		
174	34.7	0.0	166.4
176	33.3	0.0	162.0

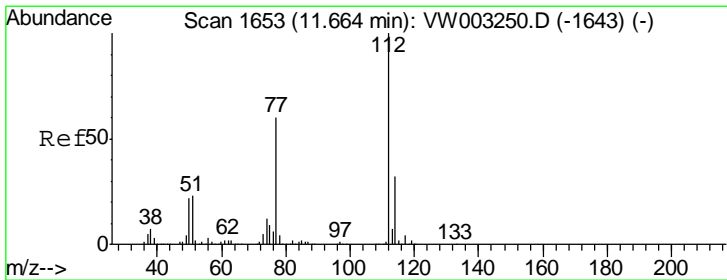
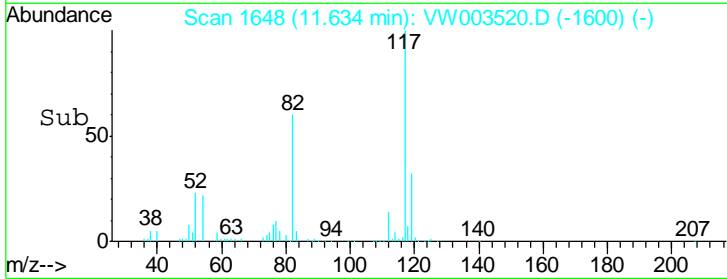
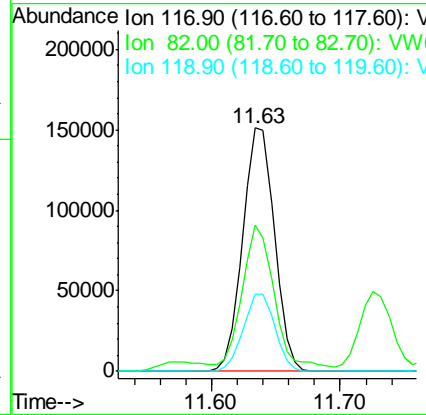
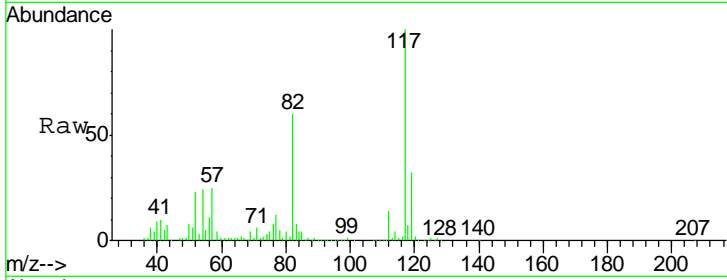




#63  
 Chlorobenzene-d5  
 Concen: 50.00 ug/l  
 RT: 11.63 min Scan# 1648  
 Delta R.T. -0.01 min  
 Lab File: VW003520.D  
 Acq: 24 Jun 2018 19:23

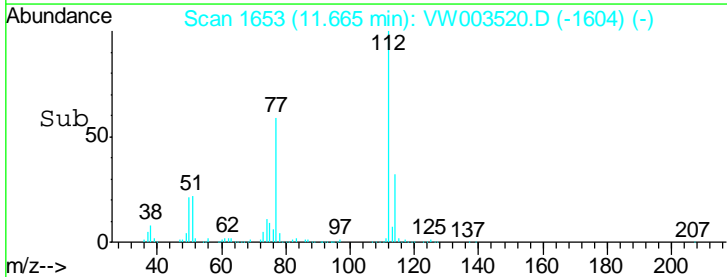
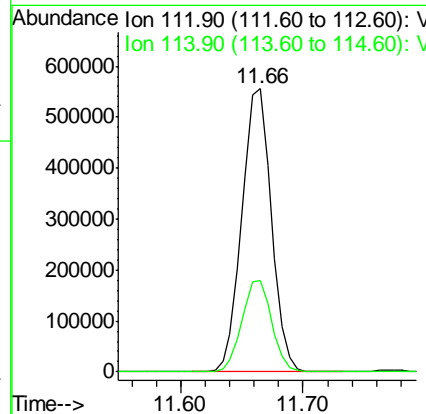
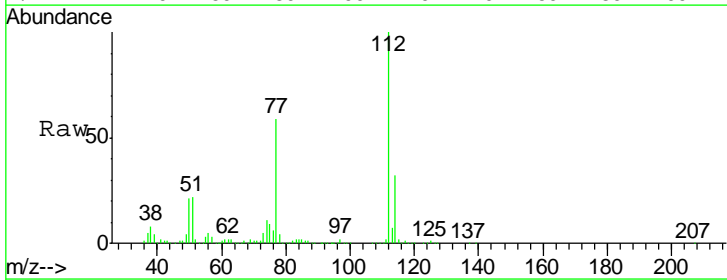
Instrument : MSVOA\_W  
 ClientSampled : WP021SB479-25-27-180620

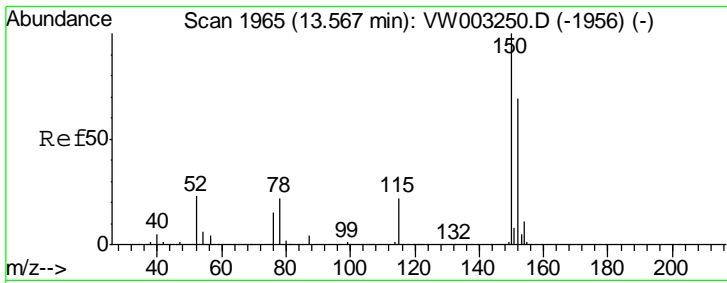
Tgt Ion	Resp	Lower	Upper
117	257314		
82	57.1	44.6	67.0
119	32.0	26.7	40.1



#65  
 Chlorobenzene  
 Concen: 173.34 ug/l  
 RT: 11.66 min Scan# 1653  
 Delta R.T. 0.00 min  
 Lab File: VW003520.D  
 Acq: 24 Jun 2018 19:23

Tgt Ion	Resp	Lower	Upper
112	928806		
114	32.5	25.9	38.9

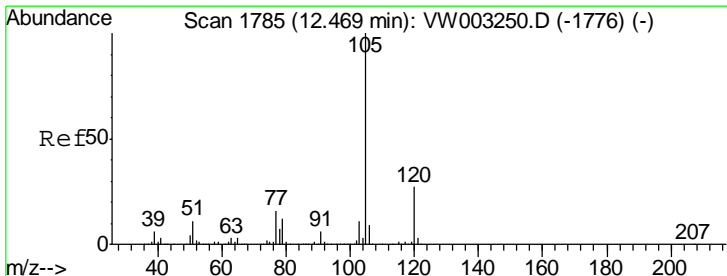
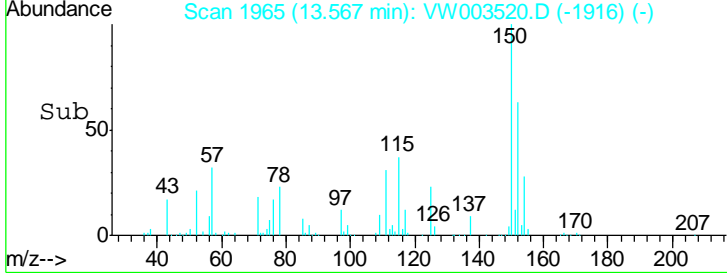
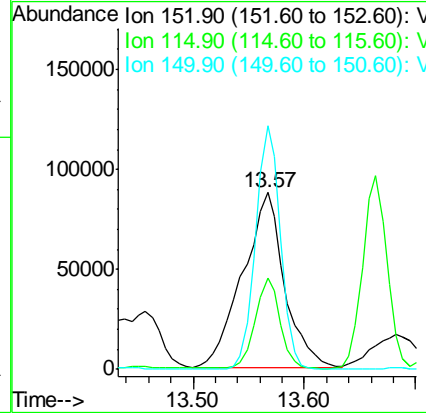
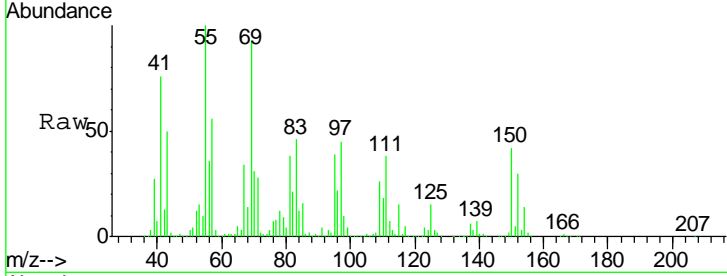




#72  
 1,4-Dichlorobenzene-d4  
 Concen: 50.00 ug/l  
 RT: 13.57 min Scan# 1965  
 Delta R.T. 0.00 min  
 Lab File: VW003520.D  
 Acq: 24 Jun 2018 19:23

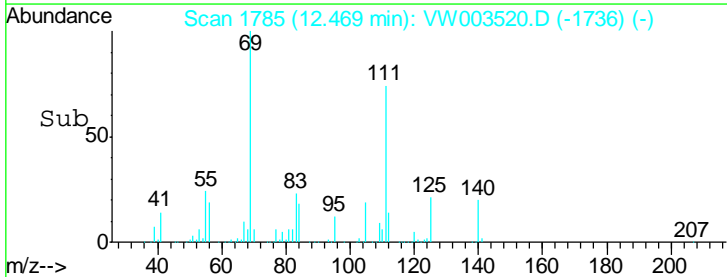
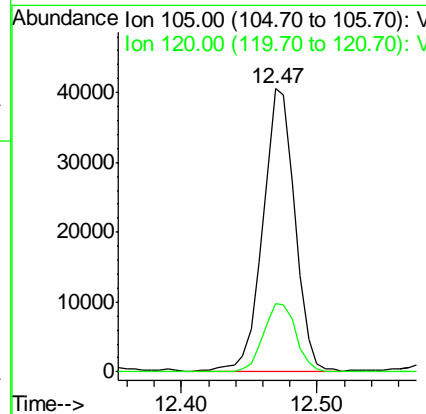
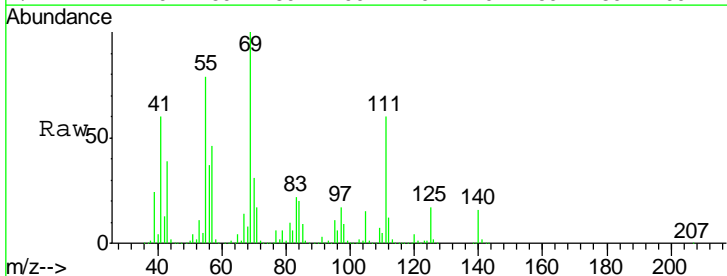
Instrument :  
 MSVOA\_W  
 ClientSampled :  
 WP021SB479-25-27-180620

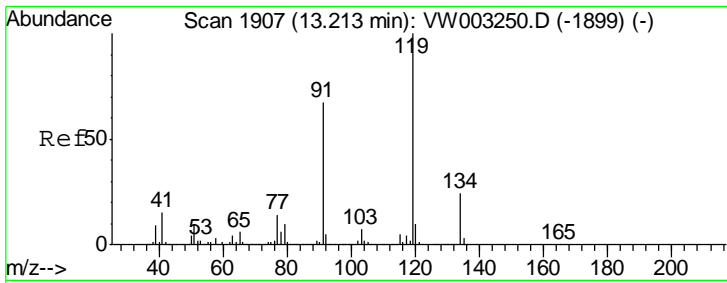
Tgt Ion	Resp	Lower	Upper
152	100		
115	30.9	29.3	88.0
150	82.7	0.0	349.6



#73  
 Isopropylbenzene  
 Concen: 4.20 ug/l  
 RT: 12.47 min Scan# 1785  
 Delta R.T. 0.00 min  
 Lab File: VW003520.D  
 Acq: 24 Jun 2018 19:23

Tgt Ion	Resp	Lower	Upper
105	100		
120	24.7	13.2	39.6

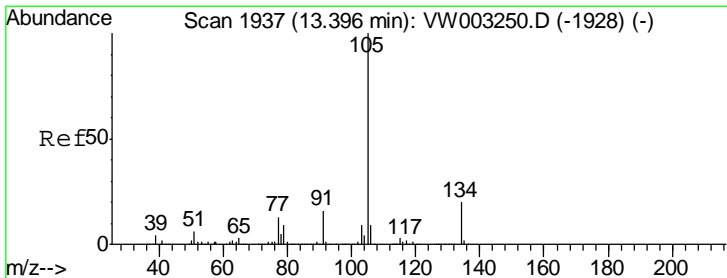
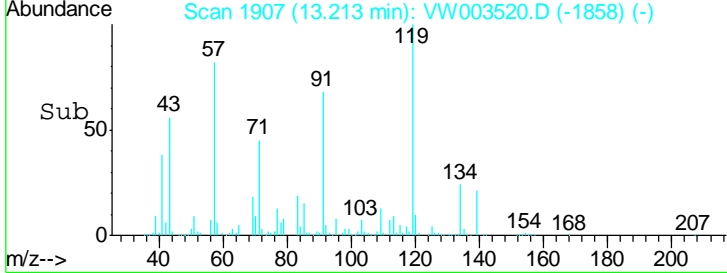
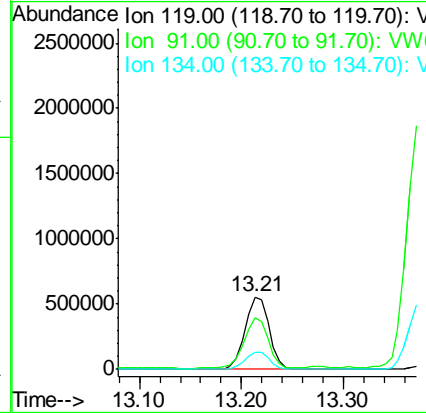
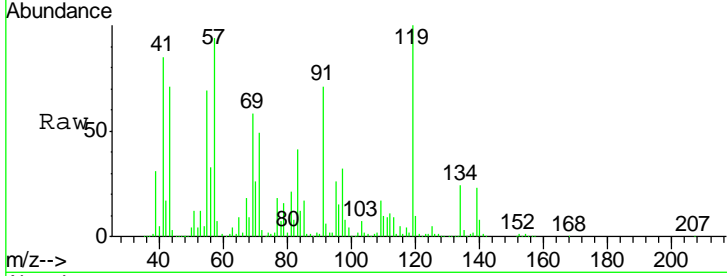




#83  
 tert-Butylbenzene  
 Concen: 79.53 ug/l  
 RT: 13.21 min Scan# 1907  
 Delta R.T. 0.00 min  
 Lab File: VW003520.D  
 Acq: 24 Jun 2018 19:23

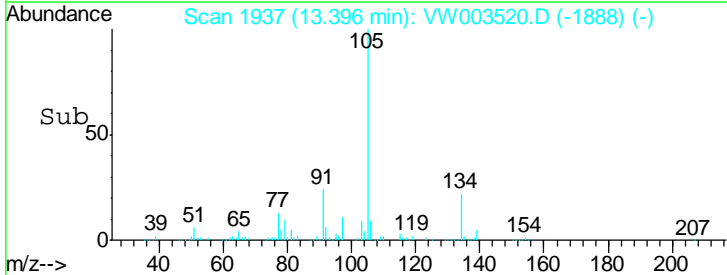
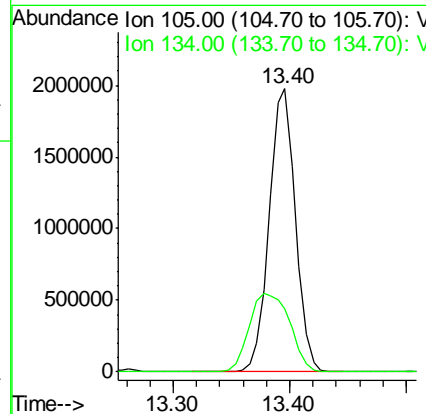
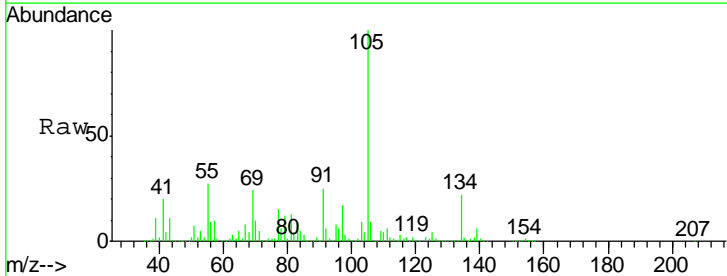
Instrument :  
 MSVOA\_W  
 Client Sampled :  
 WP021SB479-25-27-180620

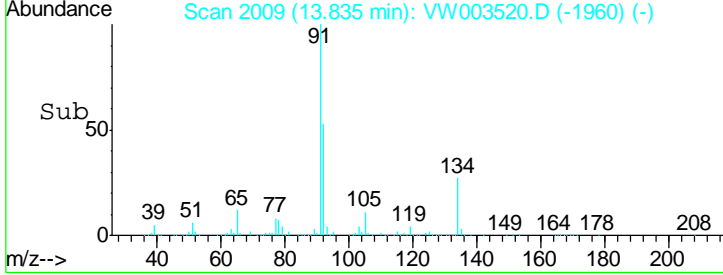
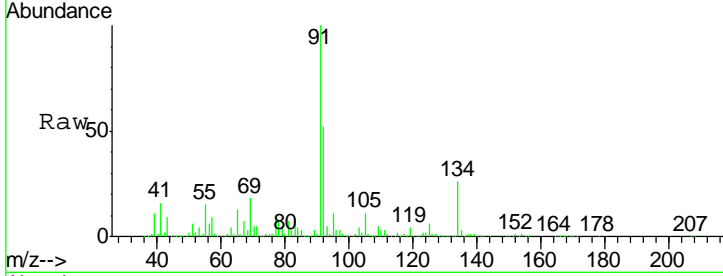
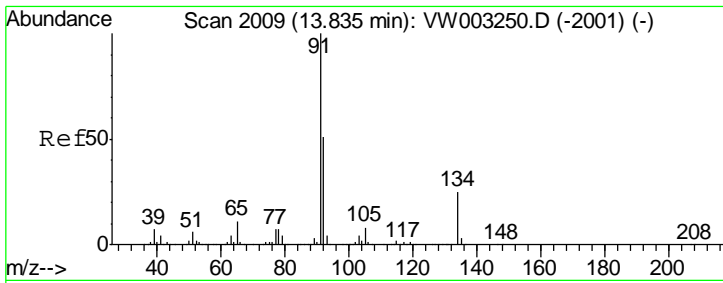
Tgt Ion	Resp	Lower	Upper
119	100		
91	70.5	33.9	101.7
134	23.9	13.4	40.1



#85  
 sec-Butylbenzene  
 Concen: 183.50 ug/l  
 RT: 13.40 min Scan# 1937  
 Delta R.T. 0.00 min  
 Lab File: VW003520.D  
 Acq: 24 Jun 2018 19:23

Tgt Ion	Resp	Lower	Upper
105	100		
134	43.0	9.8	29.5#





#89  
 n-Butylbenzene  
 Concen: 194.77 ug/l  
 RT: 13.84 min Scan# 2009  
 Delta R.T. 0.00 min  
 Lab File: VW003520.D  
 Acq: 24 Jun 2018 19:23

Instrument : MSVOA\_W  
 ClientSampleId : WP021SB479-25-27-180620

Tot Ion: 91 Resp: 2817925

Ion	Ratio	Lower	Upper
91	100		
92	45.9	26.0	78.0
134	22.5	12.7	38.0

