

Data Path : Z:\voasrv\HPCHEM1\MSVOA\_W\Data\VW062424\  
 Data File : VW029325.D  
 Acq On : 24 Jun 2024 14:22  
 Operator : SY/MD  
 Sample : VIBLK475  
 Misc : 5.00g/10mL/MSVOA\_W/SOIL  
 ALS Vial : 12 Sample Multiplier: 1

**Instrument :**  
 MSVOA\_W  
**ClientSampleId :**  
 VIBLK475

Quant Time: Jun 25 01:40:28 2024  
 Quant Method : Z:\voasrv\HPCHEM1\MSVOA\_W\Method\SFAMWLM061824SMA.M  
 Quant Title : SFAM01.0  
 QLast Update : Tue Jun 25 01:37:56 2024  
 Response via : Initial Calibration

**Manual Integrations**  
**APPROVED**  
 Reviewed By :Semsettin Yesilyurt 06/25/2024  
 Supervised By :Mahesh Dadoda 06/25/2024

Compound	R.T.	QIon	Response	Conc	Units	Dev(Min)
<b>Internal Standards</b>						
1) 1,4-Difluorobenzene	8.843	114	293503	25.000	ug/L	0.00
28) Chlorobenzene-d5	11.629	117	273643	25.000	ug/L	0.00
58) 1,4-Dichlorobenzene-d4	13.556	152	117985	25.000	ug/L	0.00
<b>System Monitoring Compounds</b>						
4) Vinyl Chloride-d3	2.363	65	88869	21.876	ug/L	0.00
Spiked Amount	25.000	Range 30 - 150	Recovery =	87.520%		
7) Chloroethane-d5	2.899	69	68334	19.919	ug/L	0.00
Spiked Amount	25.000	Range 30 - 150	Recovery =	79.680%		
11) 1,1-Dichloroethene-d2	4.021	65	41761	21.291	ug/L	0.00
Spiked Amount	25.000	Range 45 - 110	Recovery =	85.160%		
21) 2-Butanone-d5	7.082	46	48013m	39.504	ug/L	0.00
Spiked Amount	50.000	Range 20 - 135	Recovery =	79.000%		
24) Chloroform-d	7.648	84	177044	20.221	ug/L	0.00
Spiked Amount	25.000	Range 40 - 150	Recovery =	80.880%		
26) 1,2-Dichloroethane-d4	8.307	65	102864m	20.463	ug/L	0.00
Spiked Amount	25.000	Range 70 - 130	Recovery =	81.840%		
32) Benzene-d6	8.276	84	357444	21.505	ug/L	0.00
Spiked Amount	25.000	Range 20 - 135	Recovery =	86.040%		
36) 1,2-Dichloropropane-d6	9.276	67	112016	21.201	ug/L	0.00
Spiked Amount	25.000	Range 70 - 120	Recovery =	84.800%		
41) Toluene-d8	10.325	98	316560	21.527	ug/L	0.00
Spiked Amount	25.000	Range 30 - 130	Recovery =	86.120%		
43) trans-1,3-Dichloroprop...	10.575	79	42274	19.855	ug/L	0.00
Spiked Amount	25.000	Range 30 - 135	Recovery =	79.440%		
47) 2-Hexanone-d5	10.922	63	32358	39.068	ug/L	0.00
Spiked Amount	50.000	Range 20 - 135	Recovery =	78.140%		
56) 1,1,2,2-Tetrachloroeth...	12.690	84	80985	19.259	ug/L	0.00
Spiked Amount	25.000	Range 45 - 120	Recovery =	77.040%		
66) 1,2-Dichlorobenzene-d4	13.849	152	102034	24.915	ug/L	0.00
Spiked Amount	25.000	Range 75 - 120	Recovery =	99.640%		
<b>Target Compounds</b>						<b>Qvalue</b>
16) Methylene chloride	4.929	84	12866	2.493	ug/L	94

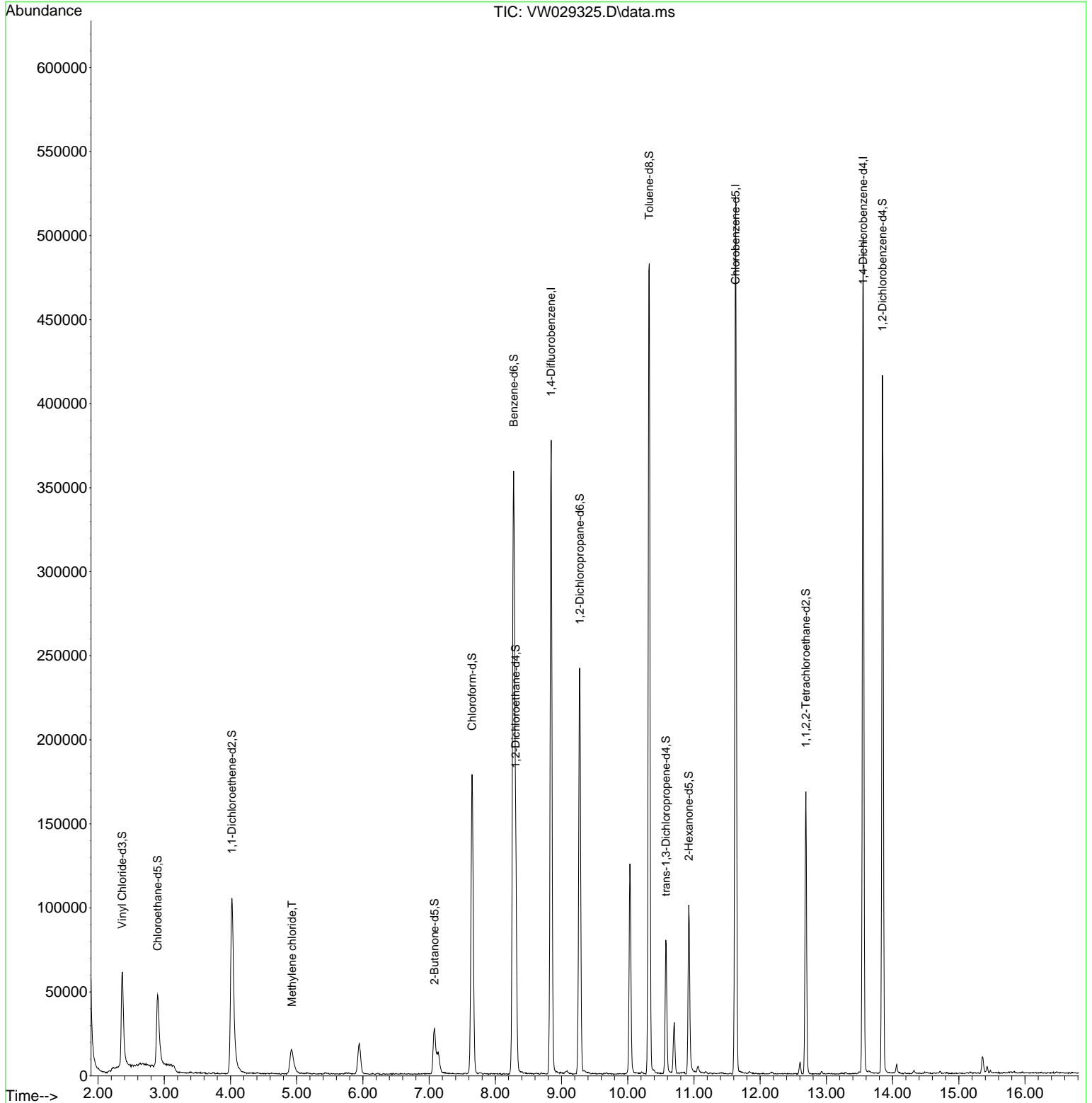
(#) = qualifier out of range (m) = manual integration (+) = signals summed

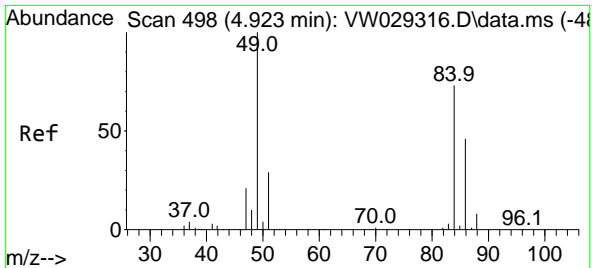
Data Path : Z:\voasrv\HPCHEM1\MSVOA\_W\Data\VW062424\  
 Data File : VW029325.D  
 Acq On : 24 Jun 2024 14:22  
 Operator : SY/MD  
 Sample : VIBLK475  
 Misc : 5.00g/10mL/MSVOA\_W/SOIL  
 ALS Vial : 12 Sample Multiplier: 1

**Instrument :**  
 MSVOA\_W  
**ClientSampleId :**  
 VIBLK475

Quant Time: Jun 25 01:40:28 2024  
 Quant Method : Z:\voasrv\HPCHEM1\MSVOA\_W\Method\SFAMWLM061824SMA.M  
 Quant Title : SFAM01.0  
 QLast Update : Tue Jun 25 01:37:56 2024  
 Response via : Initial Calibration

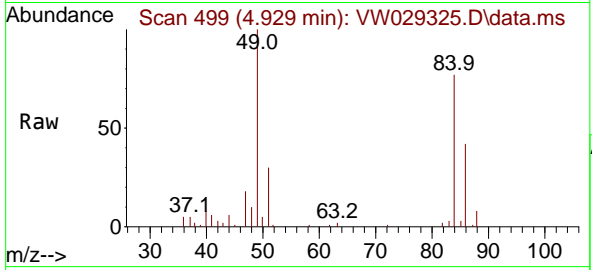
**Manual Integrations**  
**APPROVED**  
 Reviewed By :Semsettin Yesilyurt 06/25/2024  
 Supervised By :Mahesh Dadoda 06/25/2024





#16  
 Methylene chloride  
 Concen: 2.493 ug/L  
 RT: 4.929 min Scan# 499  
 Delta R.T. 0.006 min  
 Lab File: VW029325.D  
 Acq: 24 Jun 2024 14:22

Instrument : MSVOA\_W  
 Client Sample Id : VIBLK475



Tgt Ion: 84 Resp: 12860

Ion	Ratio	Lower	Upper
84	100		
86	54.3	41.4	77.0
49	130.3	95.7	177.7

Manual Integrations  
**APPROVED**  
 Reviewed By : Semsettin Yesilyurt 06/25/2024  
 Supervised By : Mahesh Dadoda 06/25/2024

