

Data Path : Z:\voasrv\HPCHEM1\MSVOA\_W\Data\VW062424\  
 Data File : VW029320.D  
 Acq On : 24 Jun 2024 12:22  
 Operator : SY/MD  
 Sample : P2982-17  
 Misc : 6.06g/10mL/MSVOA\_W/SOIL/A  
 ALS Vial : 7 Sample Multiplier: 1

Instrument :  
 MSVOA\_W  
 ClientSampleId :  
 A4BB8

Integration Parameters: LSCINT.P

Integrator: RTE  
 Smoothing : OFF  
 Sampling : 1  
 Start Thrs: 0.2  
 Stop Thrs : 0

Filtering: 5  
 Min Area: 0 % of largest Peak  
 Max Peaks: 100  
 Peak Location: TOP

If leading or trailing edge < 100 prefer < Baseline drop else tangent >  
 Peak separation: 5

Method : Z:\voasrv\HPCHEM1\MSVOA\_W\Method\SFAMWLM061824SMA.M  
 Title : SFAM01.0

Signal : TIC: VW029320.D\data.ms

peak #	R.T. min	first scan	max scan	last scan	PK TY	peak height	corr. area	corr. % max.	% of total
1	2.362	72	78	92	rBV	89697	203194	12.44%	2.019%
2	2.899	159	166	183	rBV2	70358	200235	12.26%	1.989%
3	3.899	328	330	333	rBV3	536	387	0.02%	0.004%
4	4.021	340	350	366	rBV	153507	487200	29.83%	4.840%
5	4.283	391	393	399	rVB5	795	1269	0.08%	0.013%
6	4.831	479	483	485	rBV3	493	667	0.04%	0.007%
7	4.917	485	497	512	rBV3	13506	50513	3.09%	0.502%
8	5.094	524	526	527	rBV	508	333	0.02%	0.003%
9	5.228	546	548	552	rBV3	425	595	0.04%	0.006%
10	5.307	559	561	566	rVB2	600	829	0.05%	0.008%
11	5.502	591	593	594	rVB2	598	318	0.02%	0.003%
12	5.593	601	608	613	rBV6	654	1185	0.07%	0.012%
13	5.654	614	618	621	rVB5	767	948	0.06%	0.009%
14	5.709	625	627	631	rVB4	327	360	0.02%	0.004%
15	5.752	631	634	636	rBV4	571	615	0.04%	0.006%
16	5.789	636	640	644	rBV6	743	1250	0.08%	0.012%
17	5.941	654	665	677	rBV3	20107	63276	3.87%	0.629%
18	6.136	695	697	699	rBV2	438	438	0.03%	0.004%
19	6.179	702	704	707	rVB4	545	462	0.03%	0.005%
20	6.240	713	714	716	rBV2	479	339	0.02%	0.003%
21	6.368	733	735	737	rBV3	323	335	0.02%	0.003%
22	6.453	747	749	752	rVB3	440	335	0.02%	0.003%
23	6.551	764	765	768	rVB2	491	325	0.02%	0.003%
24	6.648	780	781	784	rBV3	512	482	0.03%	0.005%
25	6.679	784	786	789	rVB4	528	397	0.02%	0.004%
26	6.703	789	790	793	rBV2	608	464	0.03%	0.005%
27	6.849	812	814	815	rBV2	437	450	0.03%	0.004%
28	6.892	819	821	823	rBV3	378	358	0.02%	0.004%
29	7.075	843	851	873	rBV	44397	147741	9.05%	1.468%
30	7.374	899	900	902	rBV2	690	701	0.04%	0.007%
31	7.447	910	912	915	rVB4	685	562	0.03%	0.006%
32	7.514	921	923	924	rBV2	599	456	0.03%	0.005%
33	7.648	930	945	959	rBV	291215	718539	43.99%	7.139%
34	7.874	978	982	984	rBV4	385	496	0.03%	0.005%
35	7.892	984	985	989	rVB3	543	467	0.03%	0.005%
36	8.008	1001	1004	1006	rBV4	632	763	0.05%	0.008%

Data Path : Z:\voasrv\HPCHEM1\MSVOA\_W\Data\VW062424\  
 Data File : VW029320.D  
 Acq On : 24 Jun 2024 12:22  
 Operator : SY/MD  
 Sample : P2982-17  
 Misc : 6.06g/10mL/MSVOA\_W/SOIL/A  
 ALS Vial : 7 Sample Multiplier: 1

Instrument :  
 MSVOA\_W  
 ClientSampleId :  
 A4BB8

Integration Parameters: LSCINT.P

Integrator: RTE  
 Smoothing : OFF  
 Sampling : 1  
 Start Thrs : 0.2  
 Stop Thrs : 0

Filtering: 5  
 Min Area: 0 % of largest Peak  
 Max Peaks: 100  
 Peak Location: TOP

If leading or trailing edge < 100 prefer < Baseline drop else tangent >  
 Peak separation: 5

Method : Z:\voasrv\HPCHEM1\MSVOA\_W\Method\SFAMWLM061824SMA.M  
 Title : SFAM01.0

37	8.032	1006	1008	1010	rVV3	426	322	0.02%	0.003%
38	8.075	1012	1015	1017	rVB4	657	730	0.04%	0.007%
39	8.099	1017	1019	1022	rVB2	401	441	0.03%	0.004%
40	8.123	1022	1023	1025	rBV2	460	331	0.02%	0.003%
41	8.276	1036	1048	1066	rBV2	551152	1633367	100.00%	16.227%
42	8.745	1123	1125	1129	rVB5	654	900	0.06%	0.009%
43	8.843	1129	1141	1154	rBV	522392	1045061	63.98%	10.383%
44	9.172	1192	1195	1197	rBV4	772	750	0.05%	0.007%
45	9.190	1197	1198	1202	rBV4	806	772	0.05%	0.008%
46	9.270	1202	1211	1223	rBV	397260	807382	49.43%	8.021%
47	9.495	1247	1248	1250	rVB2	803	419	0.03%	0.004%
48	9.520	1250	1252	1254	rVV3	492	366	0.02%	0.004%
49	9.544	1254	1256	1257	rVV2	829	494	0.03%	0.005%
50	9.587	1261	1263	1264	rBV2	768	580	0.04%	0.006%
51	9.666	1271	1276	1283	rVB5	2210	4509	0.28%	0.045%
52	9.751	1288	1290	1294	rVB3	689	911	0.06%	0.009%
53	9.861	1306	1308	1311	rBV3	608	450	0.03%	0.004%
54	9.885	1311	1312	1314	rBV2	417	359	0.02%	0.004%
55	9.904	1314	1315	1318	rVB3	1153	696	0.04%	0.007%
56	9.946	1321	1322	1326	rVB3	366	366	0.02%	0.004%
57	10.032	1329	1336	1348	rBV	183342	329785	20.19%	3.276%
58	10.245	1369	1371	1373	rBV2	569	459	0.03%	0.005%
59	10.318	1375	1383	1392	rBV	662174	1170974	71.69%	11.634%
60	10.507	1408	1414	1417	rBV6	2132	4630	0.28%	0.046%
61	10.574	1418	1425	1433	rBV	112900	194988	11.94%	1.937%
62	10.696	1441	1445	1452	rVB2	7436	13424	0.82%	0.133%
63	10.922	1475	1482	1496	rBV	168119	299636	18.34%	2.977%
64	11.221	1529	1531	1532	rBV2	602	374	0.02%	0.004%
65	11.397	1558	1560	1564	rVB5	816	1013	0.06%	0.010%
66	11.434	1564	1566	1568	rBV3	509	329	0.02%	0.003%
67	11.531	1577	1582	1584	rBV3	512	742	0.05%	0.007%
68	11.629	1589	1598	1606	rBV	611642	1020684	62.49%	10.140%
69	11.952	1650	1651	1653	rBV2	464	375	0.02%	0.004%
70	12.007	1656	1660	1666	rBV5	1080	1856	0.11%	0.018%
71	12.117	1677	1678	1681	rBV3	859	518	0.03%	0.005%
72	12.165	1683	1686	1687	rBV2	1105	1155	0.07%	0.011%
73	12.330	1711	1713	1715	rBV2	632	681	0.04%	0.007%
74	12.470	1730	1736	1740	rBV5	3254	6205	0.38%	0.062%
75	12.598	1750	1757	1764	rBV	16599	27720	1.70%	0.275%
76	12.690	1764	1772	1779	rBV	233181	388076	23.76%	3.856%

Data Path : Z:\voasrv\HPCHEM1\MSVOA\_W\Data\VW062424\  
 Data File : VW029320.D  
 Acq On : 24 Jun 2024 12:22  
 Operator : SY/MD  
 Sample : P2982-17  
 Misc : 6.06g/10mL/MSVOA\_W/SOIL/A  
 ALS Vial : 7 Sample Multiplier: 1

Instrument :  
 MSVOA\_W  
 ClientSampleId :  
 A4BB8

Integration Parameters: LSCINT.P

Integrator: RTE  
 Smoothing : OFF Filtering: 5  
 Sampling : 1 Min Area: 0 % of largest Peak  
 Start Thrs: 0.2 Max Peaks: 100  
 Stop Thrs : 0 Peak Location: TOP

If leading or trailing edge < 100 prefer < Baseline drop else tangent >  
 Peak separation: 5

Method : Z:\voasrv\HPCHEM1\MSVOA\_W\Method\SFAMWLM061824SMA.M  
 Title : SFAM01.0

77	12.921	1807	1810	1812	rBV4	837	925	0.06%	0.009%
78	13.104	1838	1840	1841	rBV2	536	486	0.03%	0.005%
79	13.184	1850	1853	1857	rBV5	2107	2903	0.18%	0.029%
80	13.360	1880	1882	1884	rBV3	425	320	0.02%	0.003%
81	13.397	1884	1888	1894	rBV7	2417	4605	0.28%	0.046%
82	13.464	1896	1899	1903	rBV5	1376	2170	0.13%	0.022%
83	13.555	1907	1914	1924	rBV	373465	616983	37.77%	6.130%
84	13.848	1955	1962	1969	rBV2	335483	558548	34.20%	5.549%
85	14.061	1992	1997	2002	rVB	5508	9176	0.56%	0.091%
86	14.220	2021	2023	2026	rVB4	415	347	0.02%	0.003%
87	14.244	2026	2027	2029	rBV	586	533	0.03%	0.005%
88	14.318	2036	2039	2043	rBV5	2836	4856	0.30%	0.048%
89	14.391	2048	2051	2052	rBV3	627	713	0.04%	0.007%
90	14.452	2058	2061	2065	rBV4	564	1022	0.06%	0.010%
91	14.519	2068	2072	2077	rVB4	3574	5772	0.35%	0.057%
92	14.763	2110	2112	2115	rVB3	778	574	0.04%	0.006%
93	14.842	2119	2125	2126	rBV5	548	852	0.05%	0.008%
94	14.933	2137	2140	2142	rBV3	486	597	0.04%	0.006%
95	14.958	2142	2144	2146	rBV3	709	630	0.04%	0.006%
96	15.043	2157	2158	2159	rBV	643	434	0.03%	0.004%
97	15.171	2176	2179	2181	rBV3	1190	1277	0.08%	0.013%
98	15.293	2197	2199	2202	rBV4	512	415	0.03%	0.004%
99	16.439	2385	2387	2390	rBV3	746	795	0.05%	0.008%
100	16.518	2398	2400	2401	rBV2	629	437	0.03%	0.004%

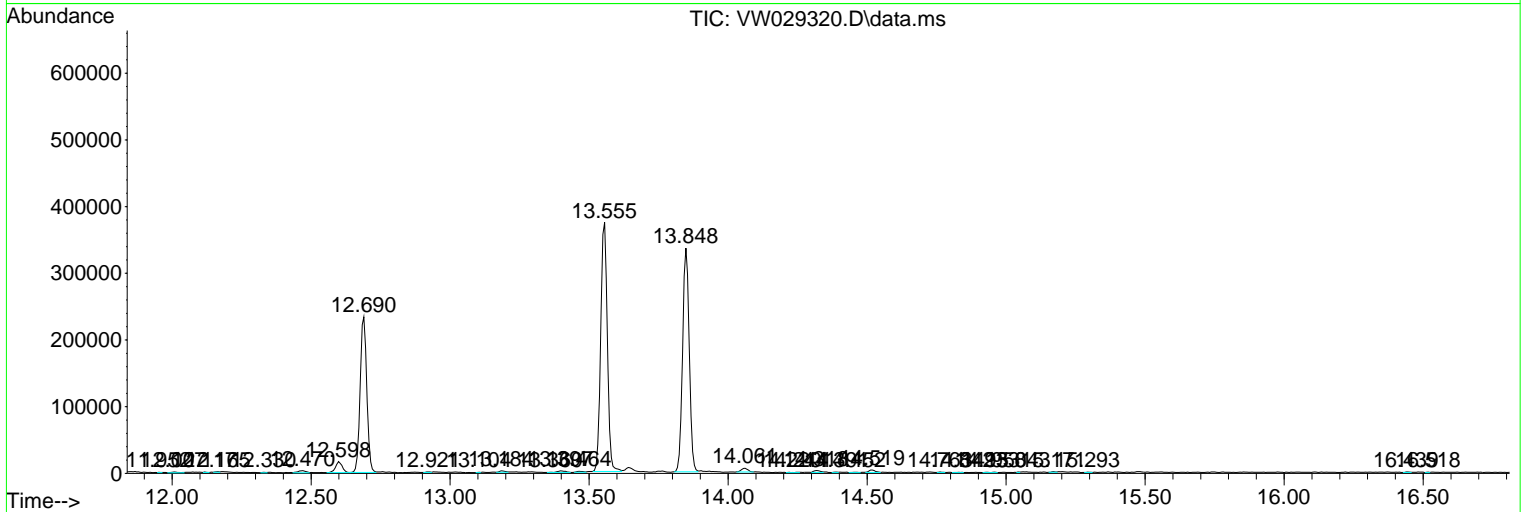
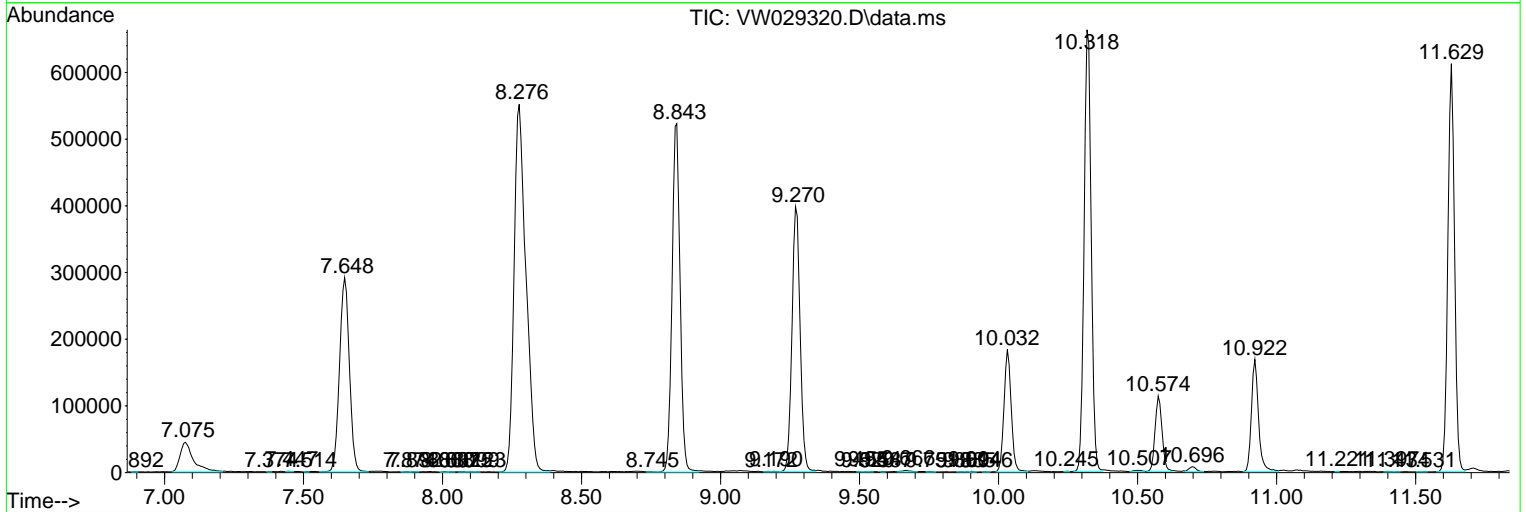
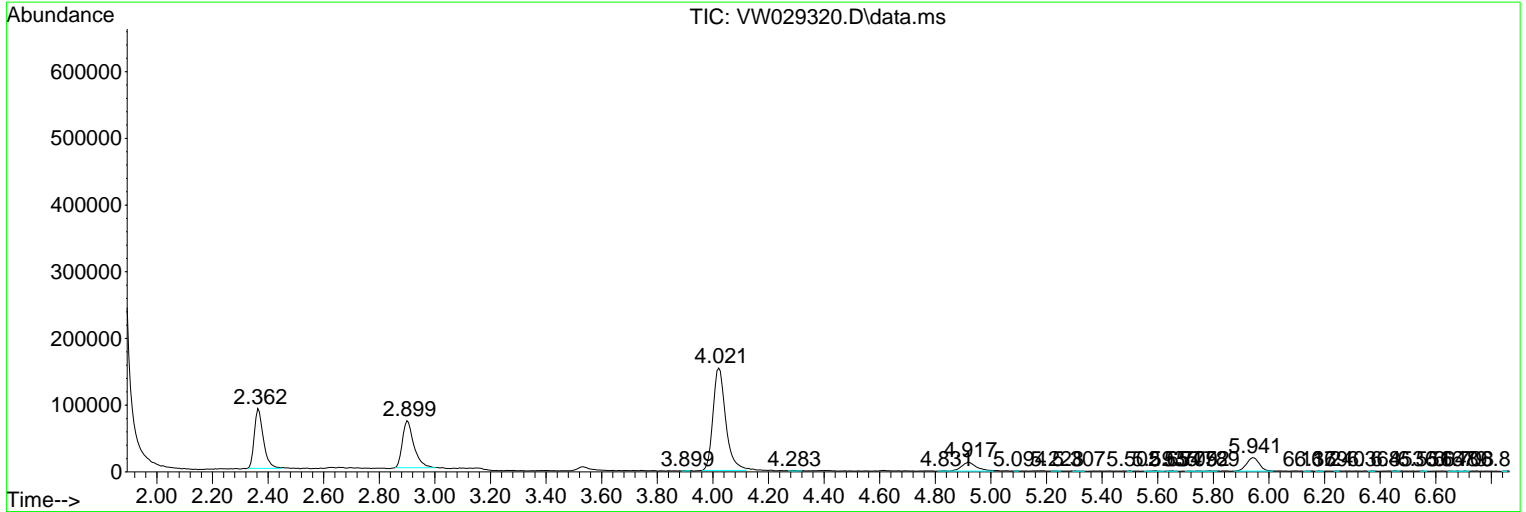
Sum of corrected areas: 10065484

Data Path : Z:\voasrv\HPCHEM1\MSVOA\_W\Data\VW062424\  
 Data File : VW029320.D  
 Acq On : 24 Jun 2024 12:22  
 Operator : SY/MD  
 Sample : P2982-17  
 Misc : 6.06g/10mL/MSVOA\_W/SOIL/A  
 ALS Vial : 7 Sample Multiplier: 1

Instrument :  
 MSVOA\_W  
 ClientSampleId :  
 A4BB8

Quant Method : Z:\voasrv\HPCHEM1\MSVOA\_W\Method\SFAMWLM061824SMA.M  
 Quant Title : SFAM01.0

TIC Library : C:\Database\NIST20.L  
 TIC Integration Parameters: LSCINT.P



Data Path : Z:\voasrv\HPCHEM1\MSVOA\_W\Data\VW062424\  
 Data File : VW029320.D  
 Acq On : 24 Jun 2024 12:22  
 Operator : SY/MD  
 Sample : P2982-17  
 Misc : 6.06g/10mL/MSVOA\_W/SOIL/A  
 ALS Vial : 7 Sample Multiplier: 1

Instrument :  
 MSVOA\_W  
 ClientSampleId :  
 A4BB8

Quant Method : Z:\voasrv\HPCHEM1\MSVOA\_W\Method\SFAMWLM061824SMA.M  
 Quant Title : SFAM01.0

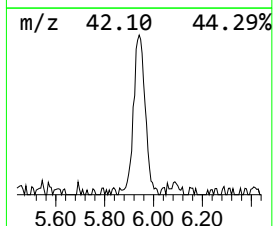
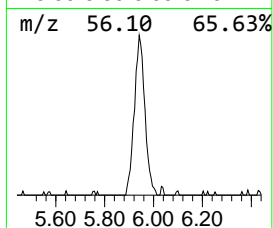
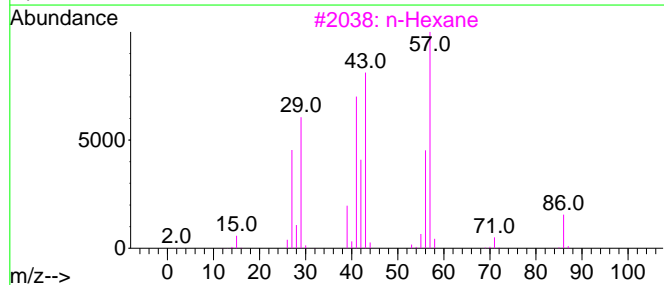
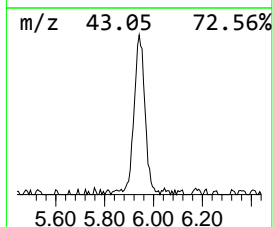
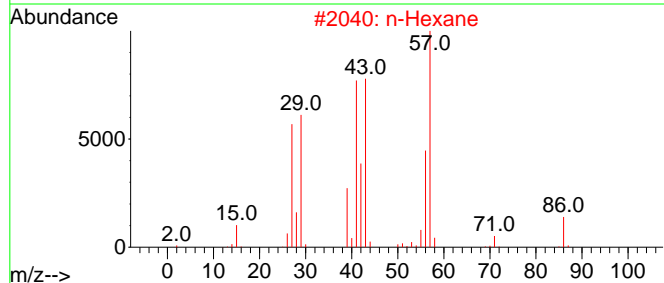
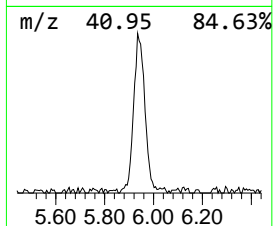
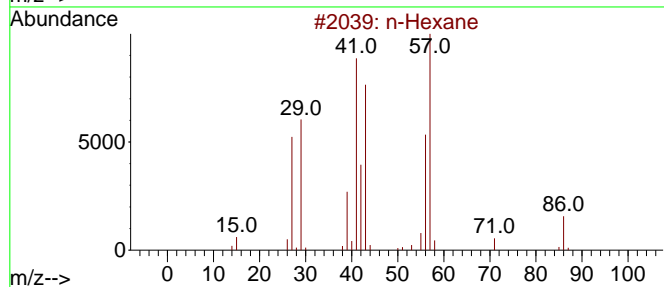
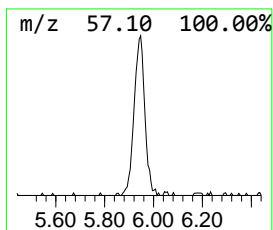
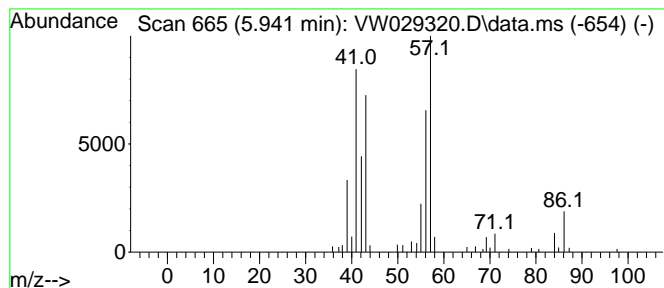
TIC Library : C:\Database\NIST20.L  
 TIC Integration Parameters: LSCINT.P

\*\*\*\*\*  
 Peak Number 1 (DEL) Alkane: Straight-Chai... Concentration Rank 2

R.T.	EstConc	Area	Relative to ISTD	R.T.
5.941	1.51 ug/L	63276	1,4-Difluorobenzene	8.843

Hit#	of 5	Tentative ID	MW	MolForm	CAS#	Qual
1		n-Hexane	86	C6H14	000110-54-3	90
2		n-Hexane	86	C6H14	000110-54-3	86
3		n-Hexane	86	C6H14	000110-54-3	86
4		2-Ethyl-oxetane	86	C5H10O	1010386-40-2	64
5		1-Pentene, 4-methyl-	84	C6H12	000691-37-2	59



Data Path : Z:\voasrv\HPCHEM1\MSVOA\_W\Data\VW062424\  
Data File : VW029320.D  
Acq On : 24 Jun 2024 12:22  
Operator : SY/MD  
Sample : P2982-17  
Misc : 6.06g/10mL/MSVOA\_W/SOIL/A  
ALS Vial : 7 Sample Multiplier: 1

Instrument :  
MSVOA\_W  
ClientSampleId :  
A4BB8

Quant Method : Z:\voasrv\HPCHEM1\MSVOA\_W\Method\SFAMWLM061824SMA.M  
Quant Title : SFAM01.0

TIC Library : C:\Database\NIST20.L  
TIC Integration Parameters: LSCINT.P

TIC Top Hit name	RT	EstConc	Units	Response	--Internal Standard--			
					#	RT	Resp	Conc
(DEL) Alkane: S...	5.941	1.5	ug/L	63276	1	8.843	1045060	25.0