

Data Path : Z:\voasrv\HPCHEM1\MSVOA_W\Data\VW062424\
 Data File : VW029325.D
 Acq On : 24 Jun 2024 14:22
 Operator : SY/MD
 Sample : VIBLK475
 Misc : 5.00g/10mL/MSVOA_W/SOIL
 ALS Vial : 12 Sample Multiplier: 1

Instrument :
 MSVOA_W
 ClientSampleId :
 VIBLK475

Integration Parameters: LSCINT.P

Integrator: RTE
 Smoothing : OFF Filtering: 5
 Sampling : 1 Min Area: 0 % of largest Peak
 Start Thrs: 0.2 Max Peaks: 100
 Stop Thrs : 0 Peak Location: TOP

If leading or trailing edge < 100 prefer < Baseline drop else tangent >
 Peak separation: 5

Method : Z:\voasrv\HPCHEM1\MSVOA_W\Method\SFAMWLM061824SMA.M
 Title : SFAM01.0

Signal : TIC: VW029325.D\data.ms

peak #	R.T. min	first scan	max scan	last scan	PK TY	peak height	corr. area	corr. % max.	% of total
1	2.180	41	48	50	rBV5	1422	3318	0.31%	0.042%
2	2.210	50	53	54	rBV3	1812	2081	0.20%	0.027%
3	2.369	72	79	96	rVB	55235	136258	12.86%	1.742%
4	2.899	159	166	182	rBV	41265	119101	11.24%	1.522%
5	3.387	245	246	250	rVV4	755	853	0.08%	0.011%
6	3.478	255	261	262	rBV4	709	802	0.08%	0.010%
7	3.674	288	293	298	rBV7	832	1532	0.14%	0.020%
8	3.735	302	303	305	rVV2	899	817	0.08%	0.010%
9	3.802	309	314	315	rVV2	603	590	0.06%	0.008%
10	3.863	322	324	330	rBV5	435	738	0.07%	0.009%
11	4.021	339	350	374	rBV	104311	352479	33.27%	4.506%
12	4.253	387	388	392	rBV3	479	609	0.06%	0.008%
13	4.405	410	413	415	rBV4	581	587	0.06%	0.008%
14	4.558	434	438	440	rBV4	572	1027	0.10%	0.013%
15	4.740	466	468	470	rVB2	632	561	0.05%	0.007%
16	4.783	472	475	479	rBV4	539	991	0.09%	0.013%
17	4.917	487	497	518	rVV2	14376	58959	5.57%	0.754%
18	5.076	520	523	524	rVV	567	555	0.05%	0.007%
19	5.259	549	553	557	rVV6	457	849	0.08%	0.011%
20	5.417	576	579	580	rBV3	757	685	0.06%	0.009%
21	5.728	627	630	631	rBV2	884	641	0.06%	0.008%
22	5.948	655	666	679	rVV2	18163	55758	5.26%	0.713%
23	6.204	705	708	709	rBV2	538	624	0.06%	0.008%
24	6.228	709	712	715	rVV3	737	1132	0.11%	0.014%
25	6.307	722	725	729	rBV3	627	1012	0.10%	0.013%
26	6.454	747	749	751	rBV2	790	806	0.08%	0.010%
27	6.691	784	788	790	rBV2	427	672	0.06%	0.009%
28	6.740	793	796	798	rVB2	444	565	0.05%	0.007%
29	6.947	828	830	832	rBV3	698	637	0.06%	0.008%
30	7.082	842	852	858	rBV2	26811	79348	7.49%	1.014%
31	7.648	932	945	959	rBV	178315	435459	41.10%	5.566%
32	7.837	972	976	980	rBV4	689	1441	0.14%	0.018%
33	7.911	985	988	991	rBV4	602	1097	0.10%	0.014%
34	7.935	991	992	997	rBV3	543	703	0.07%	0.009%
35	7.996	1000	1002	1006	rBV3	428	691	0.07%	0.009%
36	8.130	1020	1024	1026	rBV2	599	602	0.06%	0.008%

Data Path : Z:\voasrv\HPCHEM1\MSVOA_W\Data\VW062424\
 Data File : VW029325.D
 Acq On : 24 Jun 2024 14:22
 Operator : SY/MD
 Sample : VIBLK475
 Misc : 5.00g/10mL/MSVOA_W/SOIL
 ALS Vial : 12 Sample Multiplier: 1

Instrument :
 MSVOA_W
 ClientSampleId :
 VIBLK475

Integration Parameters: LSCINT.P

Integrator: RTE
 Smoothing : OFF
 Sampling : 1
 Start Thrs: 0.2
 Stop Thrs : 0

Filtering: 5
 Min Area: 0 % of largest Peak
 Max Peaks: 100
 Peak Location: TOP

If leading or trailing edge < 100 prefer < Baseline drop else tangent >
 Peak separation: 5

Method : Z:\voasrv\HPCHEM1\MSVOA_W\Method\SFAMWLM061824SMA.M
 Title : SFAM01.0

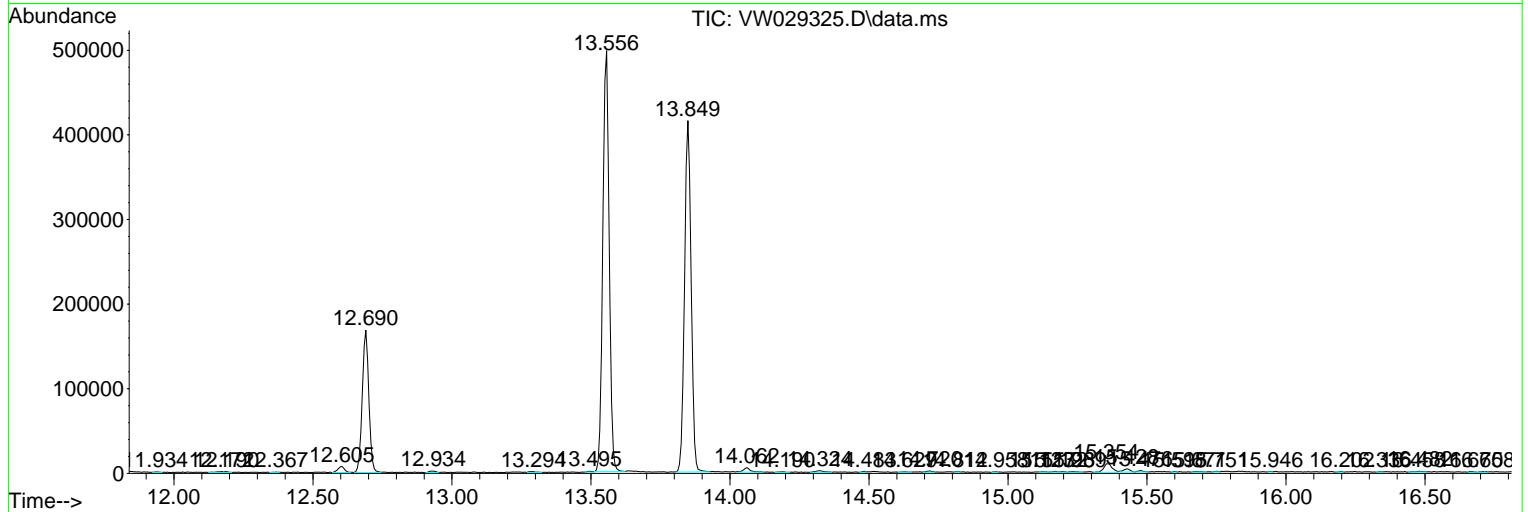
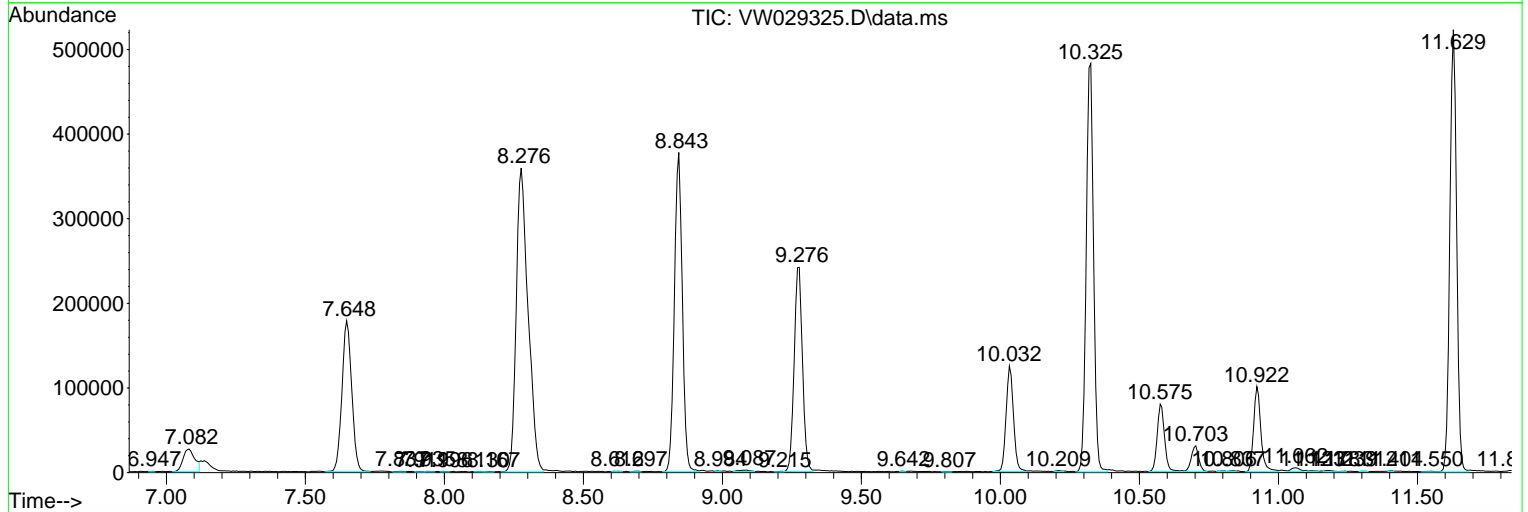
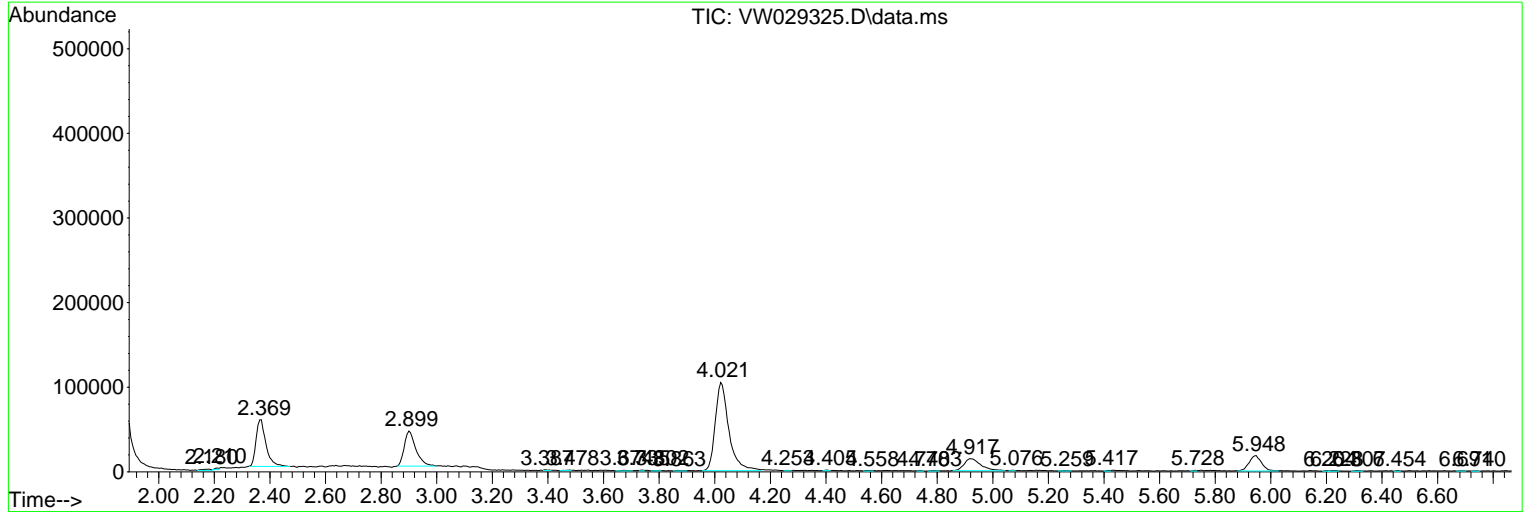
37	8.167	1026	1030	1032	rVB4	611	821	0.08%	0.010%
38	8.276	1036	1048	1061	rBV2	359194	1059446	100.00%	13.542%
39	8.612	1101	1103	1108	rVB4	447	755	0.07%	0.010%
40	8.697	1112	1117	1119	rBV5	941	1396	0.13%	0.018%
41	8.843	1131	1141	1153	rBV	377144	744926	70.31%	9.522%
42	8.984	1162	1164	1166	rBV3	867	681	0.06%	0.009%
43	9.087	1173	1181	1186	rVV9	1694	4170	0.39%	0.053%
44	9.215	1197	1202	1203	rBV3	444	616	0.06%	0.008%
45	9.276	1203	1212	1220	rBV	241369	498673	47.07%	6.374%
46	9.642	1271	1272	1275	rBV3	575	662	0.06%	0.008%
47	9.807	1296	1299	1302	rBV2	470	928	0.09%	0.012%
48	10.032	1326	1336	1346	rBV	124926	230116	21.72%	2.941%
49	10.209	1362	1365	1368	rBV5	1037	1402	0.13%	0.018%
50	10.325	1375	1384	1394	rBV	482422	880923	83.15%	11.260%
51	10.575	1418	1425	1437	rBV	79554	144464	13.64%	1.847%
52	10.703	1439	1446	1453	rVB2	30227	55052	5.20%	0.704%
53	10.806	1458	1463	1464	rBV4	821	1120	0.11%	0.014%
54	10.837	1464	1468	1470	rBV5	664	887	0.08%	0.011%
55	10.922	1475	1482	1495	rBV	100652	182483	17.22%	2.333%
56	11.062	1500	1505	1510	rVV2	4199	9014	0.85%	0.115%
57	11.123	1512	1515	1519	rVV6	703	1106	0.10%	0.014%
58	11.178	1521	1524	1530	rVB6	1385	2652	0.25%	0.034%
59	11.239	1530	1534	1535	rBV3	713	761	0.07%	0.010%
60	11.312	1542	1546	1548	rBV4	463	627	0.06%	0.008%
61	11.404	1559	1561	1563	rBV3	584	636	0.06%	0.008%
62	11.550	1579	1585	1589	rVB3	790	1724	0.16%	0.022%
63	11.629	1589	1598	1607	rBV	522495	889440	83.95%	11.369%
64	11.831	1626	1631	1637	rBV8	1270	2698	0.25%	0.034%
65	11.934	1646	1648	1652	rVB3	575	658	0.06%	0.008%
66	12.172	1679	1687	1688	rBV7	1071	1634	0.15%	0.021%
67	12.190	1688	1690	1693	rVB4	1049	1005	0.09%	0.013%
68	12.367	1715	1719	1721	rBV4	457	626	0.06%	0.008%
69	12.605	1752	1758	1763	rBV3	7222	12321	1.16%	0.157%
70	12.690	1765	1772	1781	rVV	168072	275962	26.05%	3.527%
71	12.934	1807	1812	1815	rBV4	1611	2808	0.27%	0.036%
72	13.294	1867	1871	1876	rBV7	951	1746	0.16%	0.022%
73	13.495	1901	1904	1907	rBV5	1002	1513	0.14%	0.019%
74	13.556	1907	1914	1925	rBV	497522	793737	74.92%	10.146%
75	13.849	1955	1962	1975	rVV	415238	686149	64.76%	8.771%
76	14.062	1992	1997	2007	rVB	5306	9173	0.87%	0.117%

Data Path : Z:\voasrv\HPCHEM1\MSVOA_W\Data\VW062424\
 Data File : VW029325.D
 Acq On : 24 Jun 2024 14:22
 Operator : SY/MD
 Sample : VIBLK475
 Misc : 5.00g/10mL/MSVOA_W/SOIL
 ALS Vial : 12 Sample Multiplier: 1

Instrument :
 MSVOA_W
 ClientSampleId :
 VIBLK475

Quant Method : Z:\voasrv\HPCHEM1\MSVOA_W\Method\SFAMWLM061824SMA.M
 Quant Title : SFAM01.0

TIC Library : C:\Database\NIST20.L
 TIC Integration Parameters: LSCINT.P



Data Path : Z:\voasrv\HPCHEM1\MSVOA_W\Data\VW062424\
 Data File : VW029325.D
 Acq On : 24 Jun 2024 14:22
 Operator : SY/MD
 Sample : VIBLK475
 Misc : 5.00g/10mL/MSVOA_W/SOIL
 ALS Vial : 12 Sample Multiplier: 1

Instrument :
 MSVOA_W
 ClientSampleId :
 VIBLK475

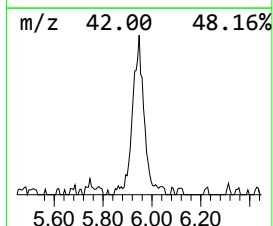
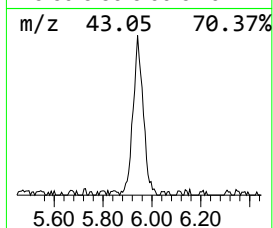
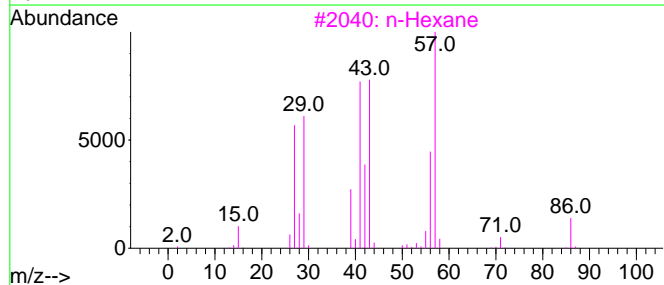
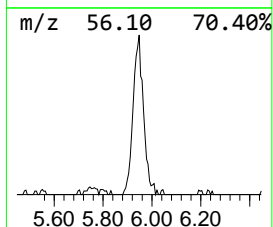
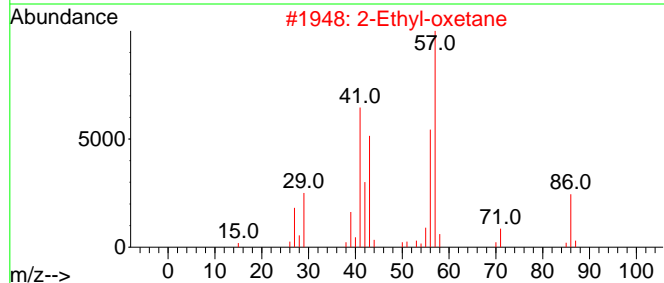
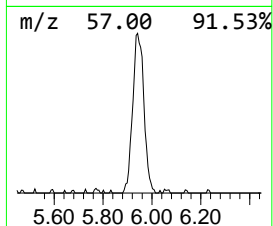
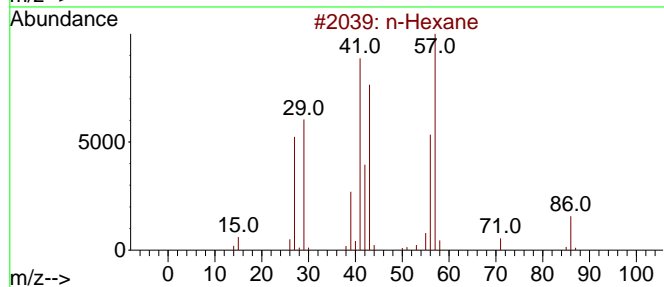
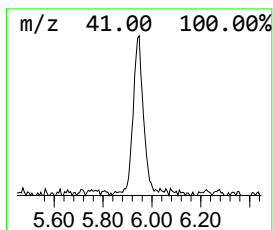
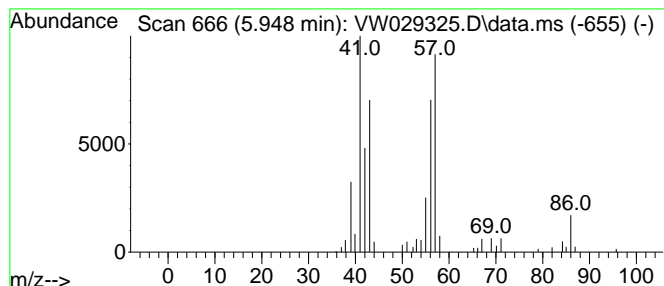
Quant Method : Z:\voasrv\HPCHEM1\MSVOA_W\Method\SFAMWLM061824SMA.M
 Quant Title : SFAM01.0

TIC Library : C:\Database\NIST20.L
 TIC Integration Parameters: LSCINT.P

 Peak Number 1 (DEL) Alkane: Straight-Chai... Concentration Rank 2

R.T.	EstConc	Area	Relative to ISTD	R.T.
5.948	1.87 ug/L	55758	1,4-Difluorobenzene	8.843

Hit#	of 5	Tentative ID	MW	MolForm	CAS#	Qual
1		n-Hexane	86	C6H14	000110-54-3	91
2		2-Ethyl-oxetane	86	C5H10O	1010386-40-2	86
3		n-Hexane	86	C6H14	000110-54-3	86
4		n-Hexane	86	C6H14	000110-54-3	72
5		1-Butanol, 2-methyl-, (S)-	88	C5H12O	001565-80-6	47



Data Path : Z:\voasrv\HPCHEM1\MSVOA_W\Data\VW062424\
Data File : VW029325.D
Acq On : 24 Jun 2024 14:22
Operator : SY/MD
Sample : VIBLK475
Misc : 5.00g/10mL/MSVOA_W/SOIL
ALS Vial : 12 Sample Multiplier: 1

Instrument :
MSVOA_W
ClientSampleId :
VIBLK475

Quant Method : Z:\voasrv\HPCHEM1\MSVOA_W\Method\SFAMWLM061824SMA.M
Quant Title : SFAM01.0

TIC Library : C:\Database\NIST0.L
TIC Integration Parameters: LSCINT.P

TIC Top Hit name	RT	EstConc	Units	Response	--Internal Standard--			
					#	RT	Resp	Conc
(DEL) Alkane: S...	5.948	1.9	ug/L	55758	1	8.843	744926	25.0