

Data Path : Z:\voasrv\HPCHEM1\MSVOA_W\Data\VW062724\
 Data File : VW029380.D
 Acq On : 27 Jun 2024 14:45
 Operator : SY/MD
 Sample : P3065-13
 Misc : 5.00g/10mL/MSVOA_W/SOIL/A
 ALS Vial : 1 Sample Multiplier: 1

Instrument :
 MSVOA_W
 ClientSampleId :
 A4DF6

Integration Parameters: LSCINT.P

Integrator: RTE
 Smoothing : OFF
 Sampling : 1
 Start Thrs : 0.2
 Stop Thrs : 0

Filtering: 5
 Min Area: 0 % of largest Peak
 Max Peaks: 100
 Peak Location: TOP

If leading or trailing edge < 100 prefer < Baseline drop else tangent >
 Peak separation: 5

Method : Z:\voasrv\HPCHEM1\MSVOA_W\Method\SFAMWLM061824SMA.M
 Title : SFAM01.0

Signal : TIC: VW029380.D\data.ms

peak #	R.T. min	first scan	max scan	last scan	PK TY	peak height	corr. area	corr. % max.	% of total
1	2.363	72	78	89	rBV	39154	86209	10.85%	1.368%
2	2.899	160	166	180	rVB2	27986	82765	10.41%	1.313%
3	3.259	224	225	229	rVB3	873	550	0.07%	0.009%
4	3.454	255	257	259	rBV3	552	486	0.06%	0.008%
5	3.655	286	290	291	rBV3	833	1035	0.13%	0.016%
6	3.771	308	309	313	rVB4	638	782	0.10%	0.012%
7	3.899	327	330	331	rBV3	416	410	0.05%	0.007%
8	4.021	338	350	365	rBV2	71846	235943	29.68%	3.744%
9	4.271	390	391	395	rVB3	864	835	0.11%	0.013%
10	4.307	395	397	398	rBV	688	451	0.06%	0.007%
11	4.454	420	421	425	rBV3	431	498	0.06%	0.008%
12	4.728	463	466	467	rBV2	611	727	0.09%	0.012%
13	4.765	470	472	477	rVB4	360	474	0.06%	0.008%
14	4.807	477	479	482	rVB2	415	399	0.05%	0.006%
15	4.832	482	483	485	rBV2	508	468	0.06%	0.007%
16	4.923	485	498	510	rBV3	19744	74758	9.40%	1.186%
17	5.112	526	529	530	rBV3	363	481	0.06%	0.008%
18	5.149	533	535	537	rVV3	499	381	0.05%	0.006%
19	5.295	554	559	560	rBV3	758	872	0.11%	0.014%
20	5.435	579	582	584	rVV4	541	579	0.07%	0.009%
21	5.490	588	591	592	rBV2	595	471	0.06%	0.007%
22	5.716	627	628	632	rBV3	453	420	0.05%	0.007%
23	5.941	658	665	675	rVB6	5652	15928	2.00%	0.253%
24	6.094	686	690	692	rBV3	630	770	0.10%	0.012%
25	6.142	696	698	701	rVV3	478	425	0.05%	0.007%
26	6.167	701	702	705	rVV2	571	547	0.07%	0.009%
27	6.246	712	715	718	rVB3	523	485	0.06%	0.008%
28	6.289	718	722	723	rBV2	359	465	0.06%	0.007%
29	6.344	727	731	732	rBV4	448	433	0.05%	0.007%
30	6.362	732	734	738	rVV3	353	524	0.07%	0.008%
31	6.453	746	749	752	rVB2	345	394	0.05%	0.006%
32	6.514	758	759	764	rVB2	679	798	0.10%	0.013%
33	6.563	764	767	768	rBV2	372	434	0.05%	0.007%
34	6.642	777	780	781	rBV3	538	402	0.05%	0.006%
35	6.679	785	786	790	rVB4	572	617	0.08%	0.010%
36	6.740	794	796	798	rVB3	657	561	0.07%	0.009%

Data Path : Z:\voasrv\HPCHEM1\MSVOA_W\Data\VW062724\
 Data File : VW029380.D
 Acq On : 27 Jun 2024 14:45
 Operator : SY/MD
 Sample : P3065-13
 Misc : 5.00g/10mL/MSVOA_W/SOIL/A
 ALS Vial : 1 Sample Multiplier: 1

Instrument :
 MSVOA_W
 ClientSampleId :
 A4DF6

Integration Parameters: LSCINT.P

Integrator: RTE
 Smoothing : OFF
 Sampling : 1
 Start Thrs : 0.2
 Stop Thrs : 0

Filtering: 5
 Min Area: 0 % of largest Peak
 Max Peaks: 100
 Peak Location: TOP

If leading or trailing edge < 100 prefer < Baseline drop else tangent >
 Peak separation: 5

Method : Z:\voasrv\HPCHEM1\MSVOA_W\Method\SFAMWLM061824SMA.M
 Title : SFAM01.0

37	6.770	798	801	802	rBV3	367	389	0.05%	0.006%
38	6.819	805	809	811	rBV4	368	599	0.08%	0.010%
39	7.069	842	850	870	rBV2	25289	92117	11.59%	1.462%
40	7.301	884	888	890	rBV2	398	640	0.08%	0.010%
41	7.343	894	895	898	rBV2	443	431	0.05%	0.007%
42	7.374	898	900	903	rVB3	656	433	0.05%	0.007%
43	7.404	903	905	909	rBV3	563	775	0.10%	0.012%
44	7.459	911	914	918	rVB5	890	1220	0.15%	0.019%
45	7.502	918	921	922	rBV2	673	625	0.08%	0.010%
46	7.648	933	945	961	rBV	138275	345127	43.42%	5.476%
47	7.825	972	974	976	rVB3	505	486	0.06%	0.008%
48	8.099	1016	1019	1020	rBV3	632	586	0.07%	0.009%
49	8.118	1020	1022	1026	rVB3	529	669	0.08%	0.011%
50	8.154	1026	1028	1032	rBV3	492	755	0.09%	0.012%
51	8.276	1037	1048	1063	rBV2	263861	794897	100.00%	12.612%
52	8.435	1073	1074	1077	rBV3	677	569	0.07%	0.009%
53	8.593	1098	1100	1102	rBV2	473	450	0.06%	0.007%
54	8.624	1102	1105	1110	rVV6	567	1119	0.14%	0.018%
55	8.837	1132	1140	1151	rBV	323650	645218	81.17%	10.237%
56	9.032	1168	1172	1174	rBV5	958	1316	0.17%	0.021%
57	9.124	1185	1187	1188	rBV3	599	482	0.06%	0.008%
58	9.270	1202	1211	1223	rBV	191018	395381	49.74%	6.273%
59	9.624	1268	1269	1272	rBV2	447	484	0.06%	0.008%
60	9.672	1272	1277	1280	rBV4	700	1415	0.18%	0.022%
61	9.727	1285	1286	1289	rBV2	361	398	0.05%	0.006%
62	9.806	1297	1299	1302	rBV3	412	597	0.08%	0.009%
63	10.032	1327	1336	1348	rBV	96319	179701	22.61%	2.851%
64	10.172	1357	1359	1362	rBV3	432	501	0.06%	0.008%
65	10.319	1375	1383	1392	rBV	361890	635815	79.99%	10.088%
66	10.575	1419	1425	1440	rVB	62323	111215	13.99%	1.765%
67	10.697	1440	1445	1453	rVB2	7433	13153	1.65%	0.209%
68	10.922	1475	1482	1492	rBV	91493	163620	20.58%	2.596%
69	11.264	1534	1538	1539	rVB4	725	822	0.10%	0.013%
70	11.282	1539	1541	1543	rBV3	512	584	0.07%	0.009%
71	11.398	1555	1560	1564	rVB6	655	1242	0.16%	0.020%
72	11.428	1564	1565	1569	rVB3	408	502	0.06%	0.008%
73	11.629	1590	1598	1606	rVV	471350	781497	98.31%	12.400%
74	11.709	1608	1611	1617	rVB2	5233	9342	1.18%	0.148%
75	11.837	1626	1632	1635	rBV5	2096	4271	0.54%	0.068%
76	12.093	1672	1674	1678	rBV5	820	1054	0.13%	0.017%

Data Path : Z:\voasrv\HPCHEM1\MSVOA_W\Data\VW062724\
 Data File : VW029380.D
 Acq On : 27 Jun 2024 14:45
 Operator : SY/MD
 Sample : P3065-13
 Misc : 5.00g/10mL/MSVOA_W/SOIL/A
 ALS Vial : 1 Sample Multiplier: 1

Instrument :
 MSVOA_W
 ClientSampleId :
 A4DF6

Integration Parameters: LSCINT.P

Integrator: RTE
 Smoothing : OFF Filtering: 5
 Sampling : 1 Min Area: 0 % of largest Peak
 Start Thrs: 0.2 Max Peaks: 100
 Stop Thrs : 0 Peak Location: TOP

If leading or trailing edge < 100 prefer < Baseline drop else tangent >
 Peak separation: 5

Method : Z:\voasrv\HPCHEM1\MSVOA_W\Method\SFAMWLM061824SMA.M
 Title : SFAM01.0

77	12.465	1729	1735	1740	rBV2	4609	7287	0.92%	0.116%
78	12.550	1747	1749	1751	rBV2	627	550	0.07%	0.009%
79	12.599	1751	1757	1764	rVB	23407	40340	5.07%	0.640%
80	12.690	1764	1772	1779	rBV	147994	247827	31.18%	3.932%
81	12.806	1790	1791	1796	rVB2	564	500	0.06%	0.008%
82	12.891	1802	1805	1807	rVB3	727	608	0.08%	0.010%
83	12.934	1807	1812	1813	rBV4	945	1367	0.17%	0.022%
84	13.105	1837	1840	1842	rBV2	643	773	0.10%	0.012%
85	13.190	1848	1854	1857	rBV6	2329	3596	0.45%	0.057%
86	13.403	1879	1889	1894	rBV8	3496	7789	0.98%	0.124%
87	13.464	1894	1899	1903	rBV5	1392	3000	0.38%	0.048%
88	13.556	1907	1914	1925	rBV	446233	721859	90.81%	11.453%
89	13.848	1955	1962	1969	rBV	323527	530897	66.79%	8.424%
90	14.062	1992	1997	2002	rVB2	8971	14284	1.80%	0.227%
91	14.263	2027	2030	2031	rBV3	559	574	0.07%	0.009%
92	14.318	2035	2039	2043	rVV4	2724	4424	0.56%	0.070%
93	14.519	2068	2072	2077	rVB3	3511	5810	0.73%	0.092%
94	14.684	2097	2099	2101	rBV	679	590	0.07%	0.009%
95	14.745	2107	2109	2111	rVB3	500	461	0.06%	0.007%
96	14.769	2111	2113	2115	rBV2	736	658	0.08%	0.010%
97	15.190	2175	2182	2187	rBV8	1720	4398	0.55%	0.070%
98	15.574	2243	2245	2247	rBV2	808	737	0.09%	0.012%
99	15.763	2275	2276	2278	rBV2	464	454	0.06%	0.007%
100	16.488	2393	2395	2396	rBV2	790	501	0.06%	0.008%

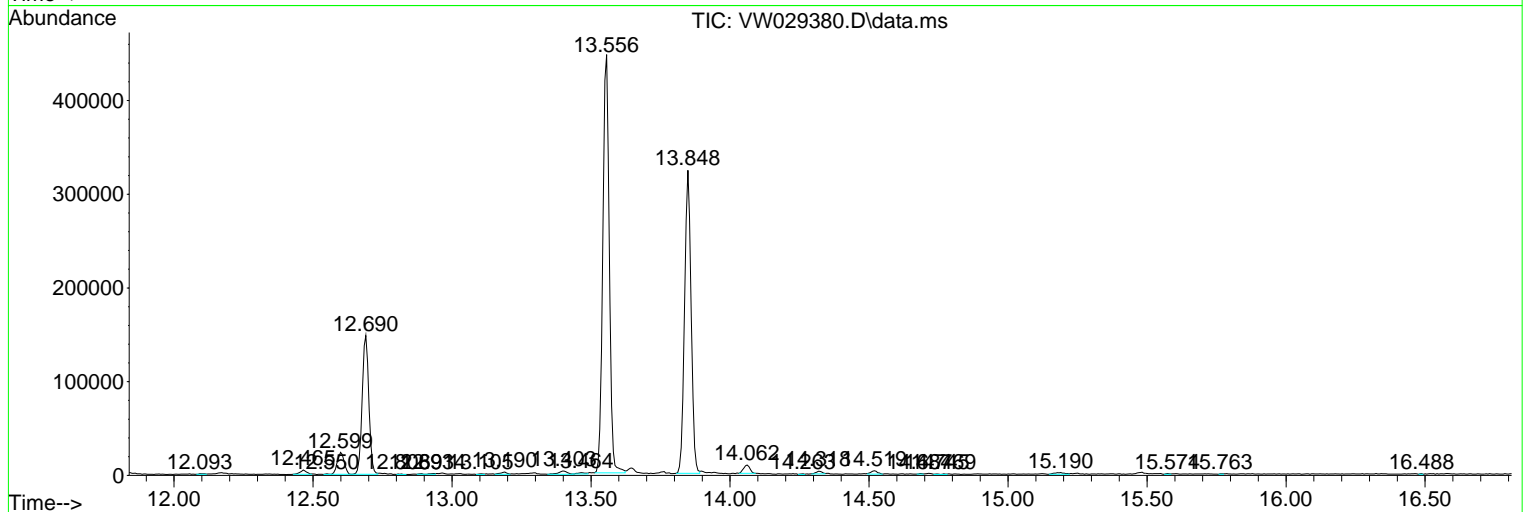
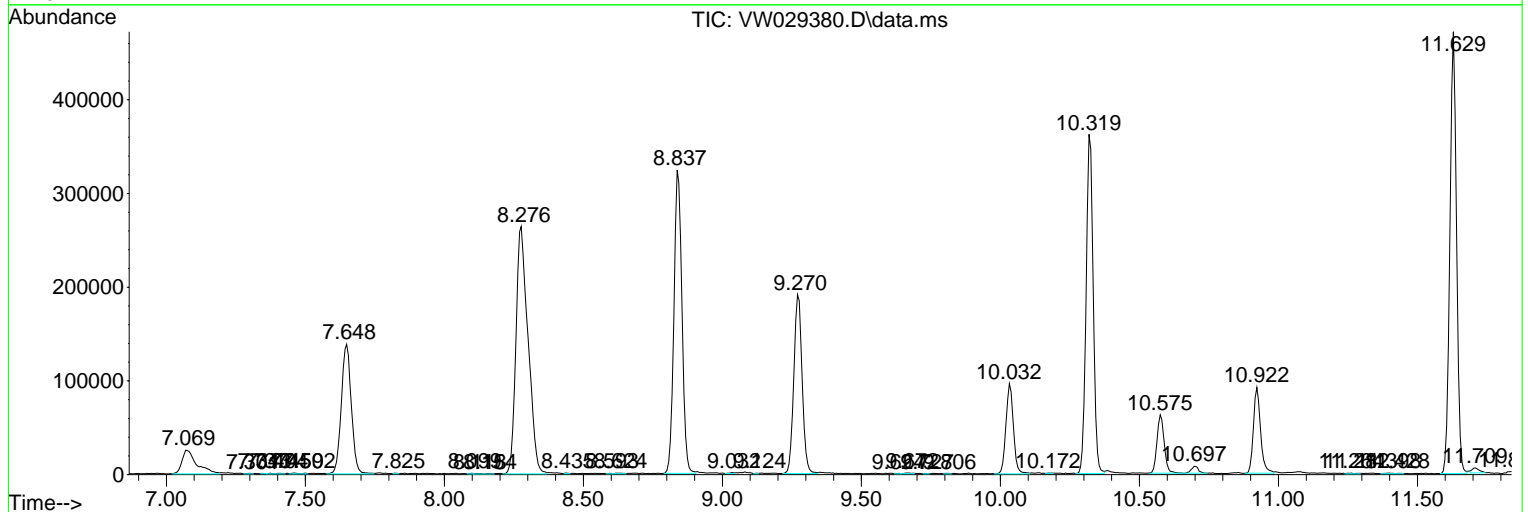
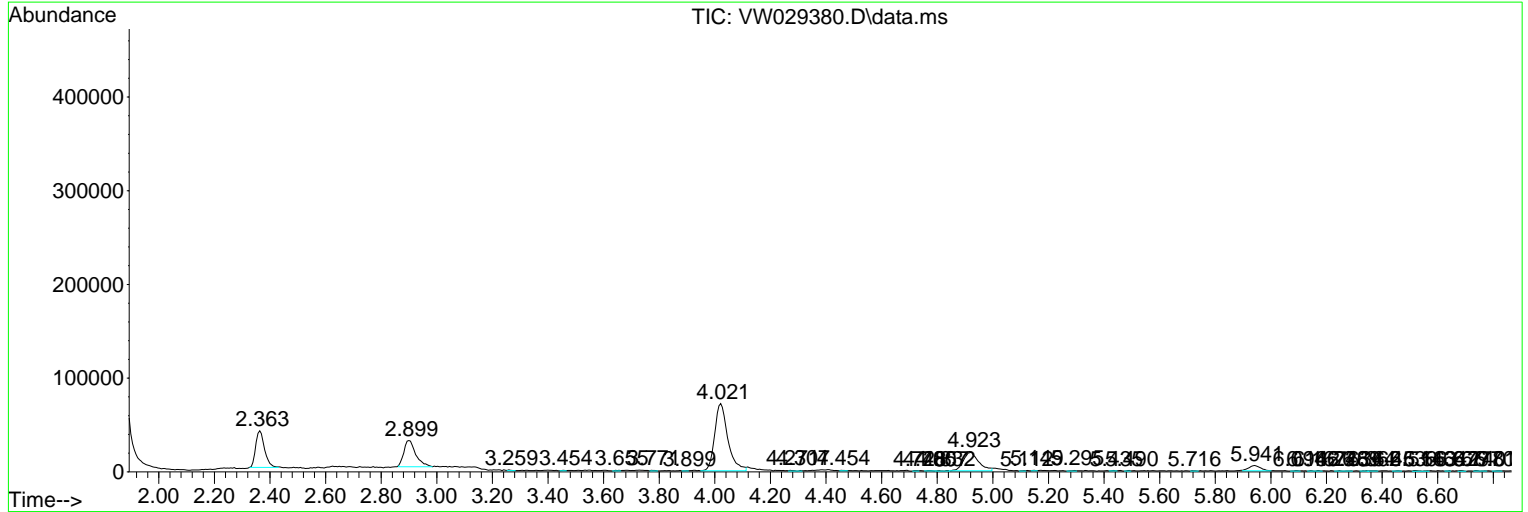
Sum of corrected areas: 6302558

Data Path : Z:\voasrv\HPCHEM1\MSVOA_W\Data\VW062724\
 Data File : VW029380.D
 Acq On : 27 Jun 2024 14:45
 Operator : SY/MD
 Sample : P3065-13
 Misc : 5.00g/10mL/MSVOA_W/SOIL/A
 ALS Vial : 1 Sample Multiplier: 1

Instrument :
 MSVOA_W
 ClientSampleId :
 A4DF6

Quant Method : Z:\voasrv\HPCHEM1\MSVOA_W\Method\SFAMWLM061824SMA.M
 Quant Title : SFAM01.0

TIC Library : C:\Database\NIST20.L
 TIC Integration Parameters: LSCINT.P



Library Search Compound Report

Data Path : Z:\voasrv\HPCHEM1\MSVOA_W\Data\VW062724\
Data File : VW029380.D
Acq On : 27 Jun 2024 14:45
Operator : SY/MD
Sample : P3065-13
Misc : 5.00g/10mL/MSVOA_W/SOIL/A
ALS Vial : 1 Sample Multiplier: 1

Instrument :
MSVOA_W
ClientSampleId :
A4DF6

Quant Method : Z:\voasrv\HPCHEM1\MSVOA_W\Method\SFAMWLM061824SMA.M
Quant Title : SFAM01.0

TIC Library : C:\Database\NIST20.L
TIC Integration Parameters: LSCINT.P

No Library Search Compounds Detected

Data Path : Z:\voasrv\HPCHEM1\MSVOA_W\Data\VW062724\
Data File : VW029380.D
Acq On : 27 Jun 2024 14:45
Operator : SY/MD
Sample : P3065-13
Misc : 5.00g/10mL/MSVOA_W/SOIL/A
ALS Vial : 1 Sample Multiplier: 1

Instrument :
MSVOA_W
ClientSampleId :
A4DF6

Quant Method : Z:\voasrv\HPCHEM1\MSVOA_W\Method\SFAMWLM061824SMA.M
Quant Title : SFAM01.0

TIC Library : C:\Database\NIST20.L
TIC Integration Parameters: LSCINT.P

TIC Top Hit name	RT	EstConc	Units	Response	--Internal Standard--			
					#	RT	Resp	Conc
