

Data Path : Z:\voasrv\HPCHEM1\MSVOA\_W\Data\VW062923\  
 Data File : VW026431.D  
 Acq On : 29 Jun 2023 11:58  
 Operator : SY/MD  
 Sample : VSTD2.571  
 Misc : 5.00g/10mL/MSVOA\_W/SOIL  
 ALS Vial : 1 Sample Multiplier: 1

Instrument :  
 MSVOA\_W  
 ClientSampleId :  
 VSTD2.5471

Quant Time: Jun 30 00:47:50 2023  
 Quant Method : Z:\voasrv\HPCHEM1\MSVOA\_W\Method\SFAMWLM062923SMA.M  
 Quant Title : SFAM01.0  
 QLast Update : Fri Jun 30 00:47:04 2023  
 Response via : Initial Calibration

Compound	R.T.	QIon	Response	Conc	Units	Dev(Min)
Internal Standards						
1) 1,4-Difluorobenzene	8.843	114	942656	25.000	ug/L	0.00
28) Chlorobenzene-d5	11.629	117	822149	25.000	ug/L	0.00
58) 1,4-Dichlorobenzene-d4	13.556	152	389486	25.000	ug/L	0.00
System Monitoring Compounds						
4) Vinyl Chloride-d3	2.357	65	23117	2.155	ug/L	0.00
7) Chloroethane-d5	3.094	69	245	0.028	ug/L	0.20
11) 1,1-Dichloroethene-d2	4.021	65	13005	2.392	ug/L	0.00
21) 2-Butanone-d5	7.088	46	21949	5.429	ug/L	0.01
24) Chloroform-d	7.648	84	56839	2.474	ug/L	0.00
26) 1,2-Dichloroethane-d4	8.307	65	32561	2.593	ug/L	0.00
32) Benzene-d6	8.276	84	119974	2.509	ug/L	0.00
36) 1,2-Dichloropropane-d6	9.270	67	38490	2.526	ug/L	0.00
41) Toluene-d8	10.325	98	106847	2.530	ug/L	0.00
43) trans-1,3-Dichloroprop...	10.581	79	14976	2.438	ug/L	0.00
47) 2-Hexanone-d5	10.928	63	11951	4.689	ug/L	0.00
56) 1,1,2,2-Tetrachloroeth...	12.690	84	29692	2.523	ug/L	0.00
66) 1,2-Dichlorobenzene-d4	13.849	152	37505	2.765	ug/L	0.00
Target Compounds						
2) Dichlorodifluoromethane	2.143	85	624	0.069	ug/L	93
3) Chloromethane	2.216	50	29940	2.309	ug/L	97
5) Vinyl chloride	2.369	62	31718	2.373	ug/L	97
6) Bromomethane	2.783	94	16980	2.232	ug/L	98
8) Chloroethane	2.930	64	19003	2.345	ug/L	89
9) Trichlorofluoromethane	3.265	101	20819	2.142	ug/L	100
10) 1,1,2-Trichloro-1,2,2-...	4.076	101	25802	2.427	ug/L #	69
12) 1,1-Dichloroethene	4.045	96	25733	2.446	ug/L	84
13) Acetone	4.125	43	20991	7.326	ug/L	99
14) Carbon disulfide	4.393	76	83095	2.432	ug/L	99
15) Methyl Acetate	4.673	43	15453	2.484	ug/L #	66
16) Methylene chloride	4.917	84	96623	6.098	ug/L	99
17) trans-1,2-Dichloroethene	5.429	96	28575	2.516	ug/L	94
18) Methyl tert-butyl Ether	5.429	73	48609	2.619	ug/L #	84
19) 1,1-Dichloroethane	6.216	63	58578	2.564	ug/L	98
20) cis-1,2-Dichloroethene	7.167	96	31420	2.443	ug/L	98
22) 2-Butanone	7.173	43	30634	6.521	ug/L	83
23) Bromochloromethane	7.520	128	13315	2.489	ug/L	78
25) Chloroform	7.679	83	54518	2.458	ug/L	99
27) 1,2-Dichloroethane	8.398	62	38048	2.509	ug/L	97
29) Cyclohexane	7.959	56	54071	2.320	ug/L	99
30) 1,1,1-Trichloroethane	7.874	97	41287	2.357	ug/L	98
31) Carbon tetrachloride	8.069	117	37079	2.352	ug/L	99
33) Benzene	8.325	78	123504	2.399	ug/L	100
34) Trichloroethene	9.093	95	32487	2.477	ug/L	95
35) Methylcyclohexane	9.337	83	54756	2.344	ug/L	97
37) 1,2-Dichloropropane	9.368	63	34546	2.528	ug/L	99
38) Bromodichloromethane	9.648	83	36877	2.404	ug/L	97
39) cis-1,3-Dichloropropene	10.075	75	45093	2.204	ug/L	98
40) 4-Methyl-2-pentanone	10.209	43	44011	4.690	ug/L	97
42) Toluene	10.386	91	128191	2.434	ug/L	98
44) trans-1,3-Dichloropropene	10.605	75	37868	2.265	ug/L	95

Data Path : Z:\voasrv\HPCHEM1\MSVOA\_W\Data\VW062923\  
 Data File : VW026431.D  
 Acq On : 29 Jun 2023 11:58  
 Operator : SY/MD  
 Sample : VSTD2.571  
 Misc : 5.00g/10mL/MSVOA\_W/SOIL  
 ALS Vial : 1 Sample Multiplier: 1

Instrument :  
 MSVOA\_W  
 ClientSampleId :  
 VSTD2.5471

Quant Time: Jun 30 00:47:50 2023  
 Quant Method : Z:\voasrv\HPCHEM1\MSVOA\_W\Method\SFAMWLM062923SMA.M  
 Quant Title : SFAM01.0  
 QLast Update : Fri Jun 30 00:47:04 2023  
 Response via : Initial Calibration

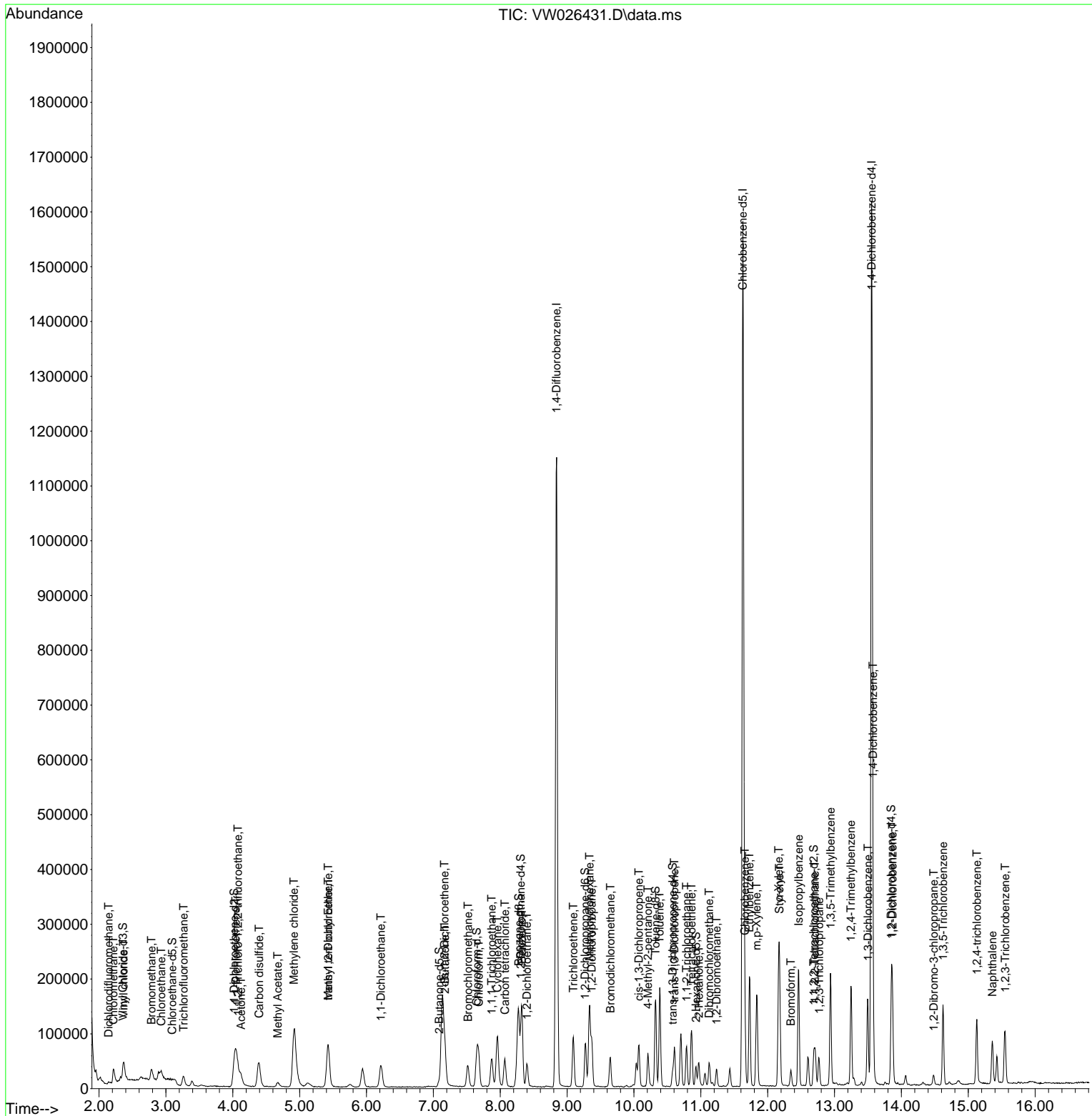
Compound	R.T.	QIon	Response	Conc	Units	Dev(Min)
45) 1,1,2-Trichloroethane	10.788	97	22753	2.444	ug/L	99
46) Tetrachloroethene	10.861	164	23342	2.517	ug/L	89
48) 2-Hexanone	10.971	43	29143	4.627	ug/L	96
49) Dibromochloromethane	11.123	129	22073	2.380	ug/L	94
50) 1,2-Dibromoethane	11.233	107	21492	2.510	ug/L	96
51) Chlorobenzene	11.660	112	81490	2.500	ug/L	99
52) Ethylbenzene	11.727	91	139944	2.361	ug/L	100
53) m,p-Xylene	11.837	106	52149	2.373	ug/L	93
54) o-Xylene	12.166	106	47190	2.315	ug/L	86
55) Styrene	12.178	104	81396	2.339	ug/L	97
57) 1,1,2,2-Tetrachloroethane	12.708	83	28778	2.531	ug/L	94
59) Bromoform	12.349	173	12378	2.400	ug/L	95
60) Isopropylbenzene	12.465	105	134680	2.371	ug/L	98
61) 1,2,3-Trichloropropane	12.769	75	21741	2.554	ug/L	99
62) 1,3,5-Trimethylbenzene	12.940	105	103308	2.287	ug/L	100
63) 1,2,4-Trimethylbenzene	13.245	105	97166	2.202	ug/L	100
64) 1,3-Dichlorobenzene	13.501	146	61653	2.587	ug/L	97
65) 1,4-Dichlorobenzene	13.574	146	62354	2.630	ug/L	99
67) 1,2-Dichlorobenzene	13.867	146	52762	2.446	ug/L	91
68) 1,2-Dibromo-3-chloropr...	14.483	75	5013	2.581	ug/L #	88
69) 1,3,5-Trichlorobenzene	14.623	180	40751	2.512	ug/L	98
70) 1,2,4-trichlorobenzene	15.129	180	36274	2.583	ug/L	98
71) Naphthalene	15.360	128	67036	2.342	ug/L	99
72) 1,2,3-Trichlorobenzene	15.556	180	31367	2.597	ug/L	98

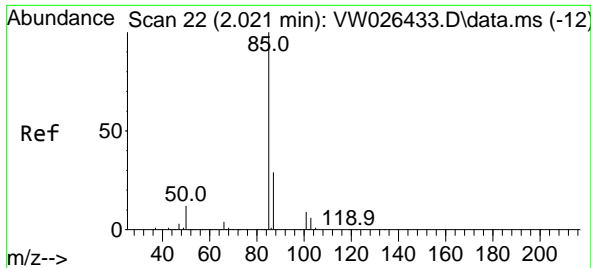
(#) = qualifier out of range (m) = manual integration (+) = signals summed

Data Path : Z:\voasrv\HPCHEM1\MSVOA\_W\Data\VW062923\  
 Data File : VW026431.D  
 Acq On : 29 Jun 2023 11:58  
 Operator : SY/MD  
 Sample : VSTD2.571  
 Misc : 5.00g/10mL/MSVOA\_W/SOIL  
 ALS Vial : 1 Sample Multiplier: 1

Instrument :  
 MSVOA\_W  
 ClientSampleId :  
 VSTD2.5471

Quant Time: Jun 30 00:47:50 2023  
 Quant Method : Z:\voasrv\HPCHEM1\MSVOA\_W\Method\SFAMWLM062923SMA.M  
 Quant Title : SFAM01.0  
 QLast Update : Fri Jun 30 00:47:04 2023  
 Response via : Initial Calibration

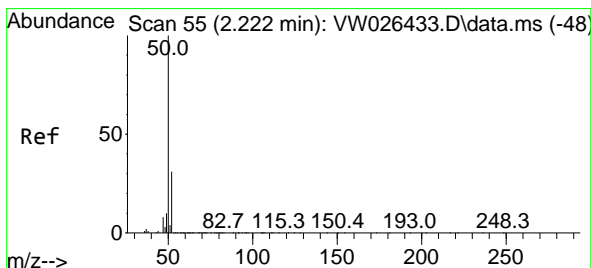
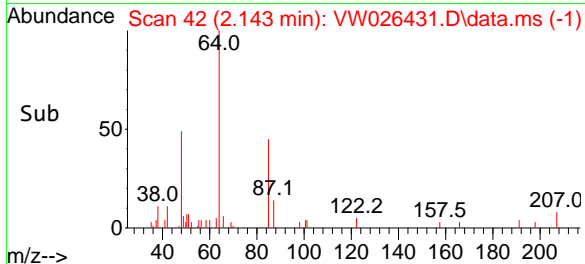
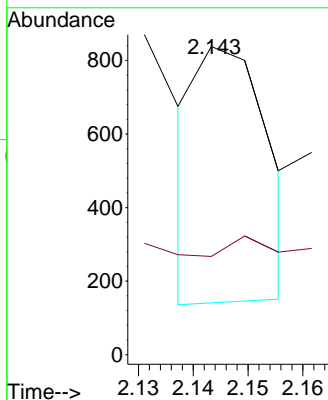
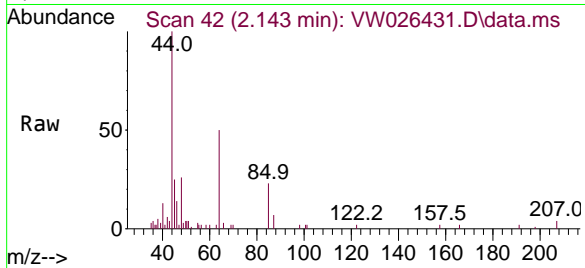




#2  
 Dichlorodifluoromethane  
 Concen: 0.069 ug/L  
 RT: 2.143 min Scan# 41  
 Delta R.T. 0.122 min  
 Lab File: VW026431.D  
 Acq: 29 Jun 2023 11:58

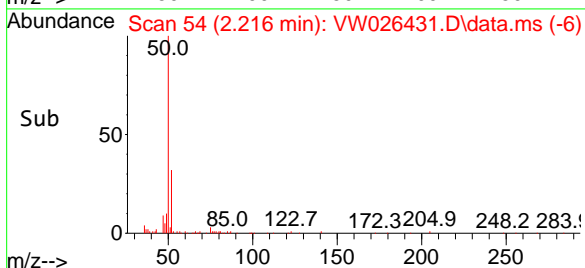
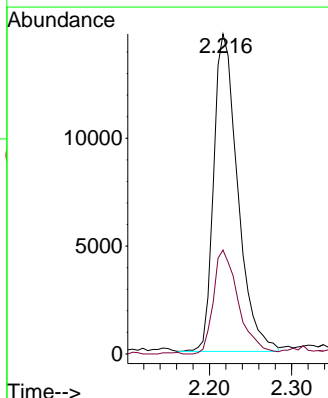
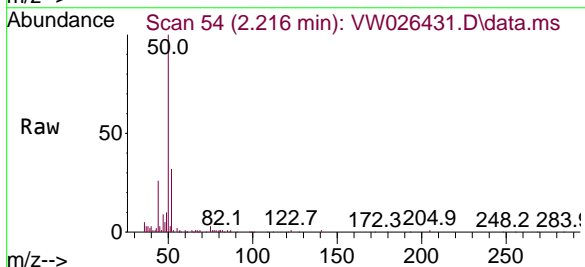
Instrument :  
 MSVOA\_W  
 ClientSampleId :  
 VSTD2.5471

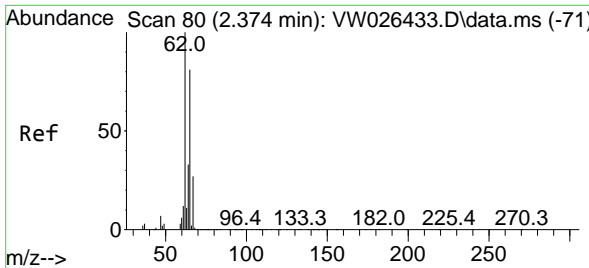
Tgt Ion: 85 Resp: 624  
 Ion Ratio Lower Upper  
 85 100  
 87 27.2 19.0 28.4



#3  
 Chloromethane  
 Concen: 2.309 ug/L  
 RT: 2.216 min Scan# 54  
 Delta R.T. -0.006 min  
 Lab File: VW026431.D  
 Acq: 29 Jun 2023 11:58

Tgt Ion: 50 Resp: 29940  
 Ion Ratio Lower Upper  
 50 100  
 52 32.4 21.7 40.3

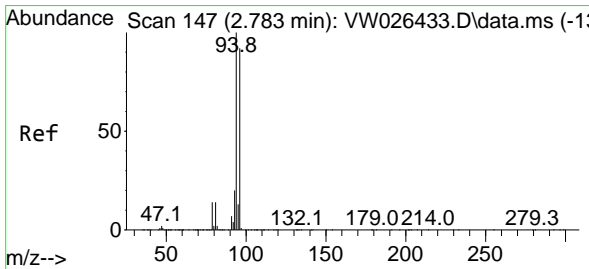
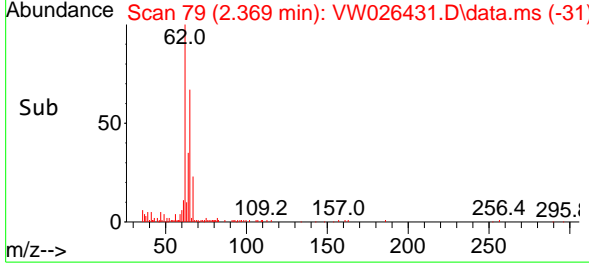
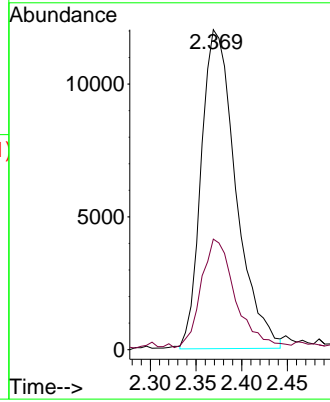
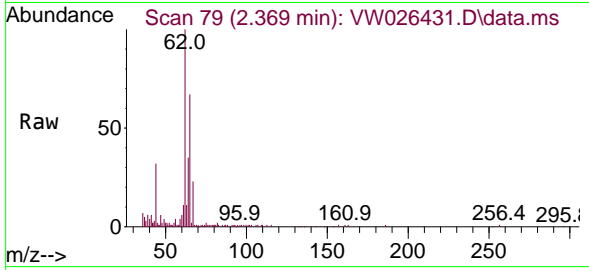




#5  
 Vinyl chloride  
 Concen: 2.373 ug/L  
 RT: 2.369 min Scan# 79  
 Delta R.T. -0.006 min  
 Lab File: VW026431.D  
 Acq: 29 Jun 2023 11:58

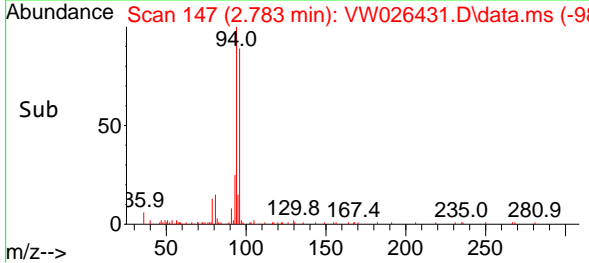
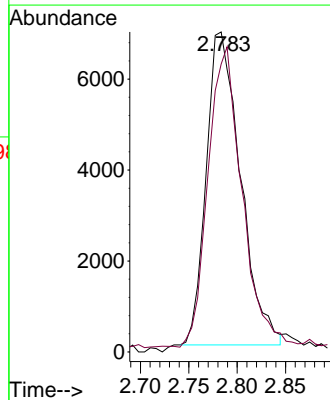
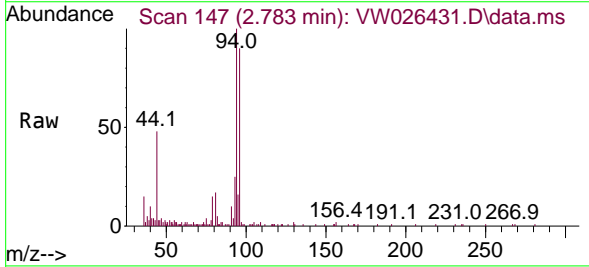
Instrument :  
 MSVOA\_W  
 ClientSampleId :  
 VSTD2.5471

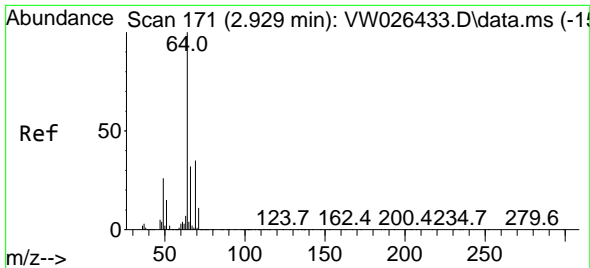
Tgt Ion: 62 Resp: 31718  
 Ion Ratio Lower Upper  
 62 100  
 64 34.5 23.0 42.8



#6  
 Bromomethane  
 Concen: 2.232 ug/L  
 RT: 2.783 min Scan# 147  
 Delta R.T. 0.000 min  
 Lab File: VW026431.D  
 Acq: 29 Jun 2023 11:58

Tgt Ion: 94 Resp: 16980  
 Ion Ratio Lower Upper  
 94 100  
 96 90.0 64.3 119.3

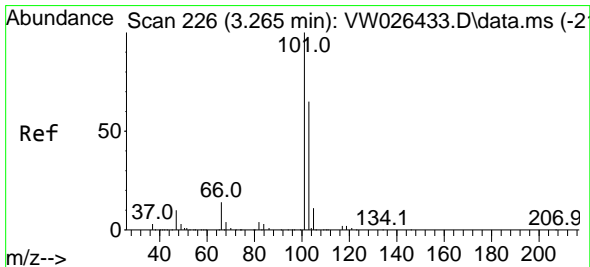
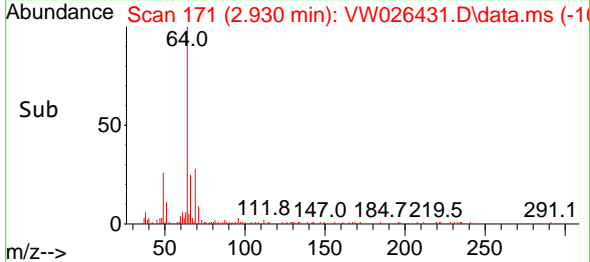
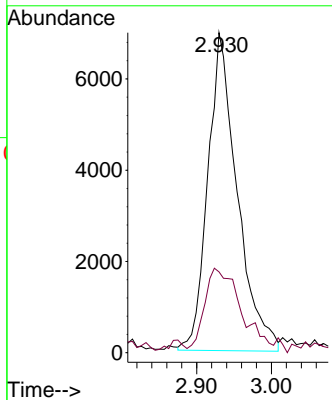
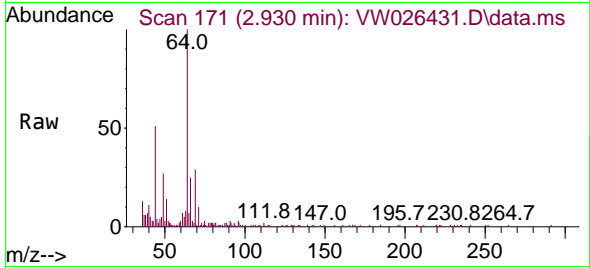




#8  
 Chloroethane  
 Concen: 2.345 ug/L  
 RT: 2.930 min Scan# 171  
 Delta R.T. 0.000 min  
 Lab File: VW026431.D  
 Acq: 29 Jun 2023 11:58

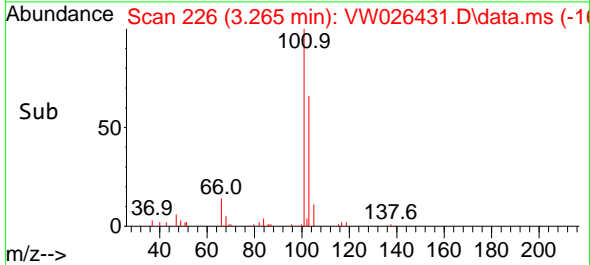
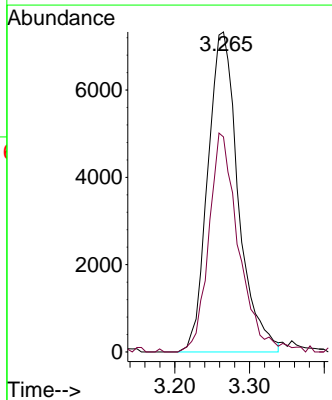
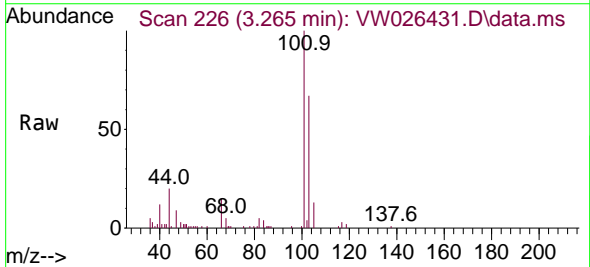
Instrument : MSVOA\_W  
 ClientSampleId : VSTD2.5471

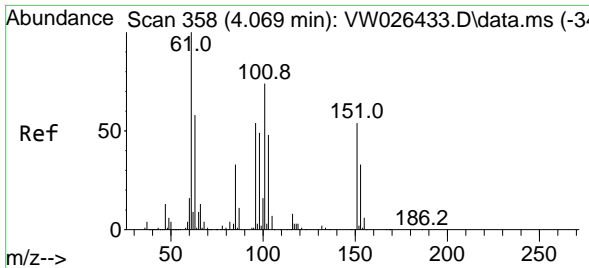
Tgt Ion	Resp	Lower	Upper
64	19003		
66	25.2	22.1	41.1



#9  
 Trichlorofluoromethane  
 Concen: 2.142 ug/L  
 RT: 3.265 min Scan# 226  
 Delta R.T. 0.000 min  
 Lab File: VW026431.D  
 Acq: 29 Jun 2023 11:58

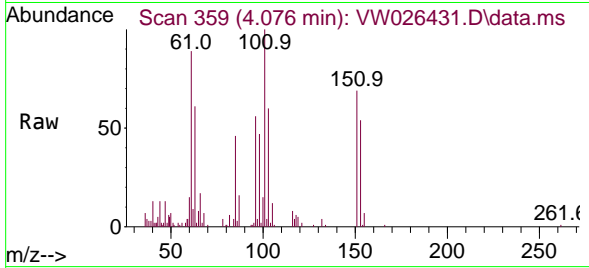
Tgt Ion	Resp	Lower	Upper
101	20819		
103	64.9	52.0	78.0



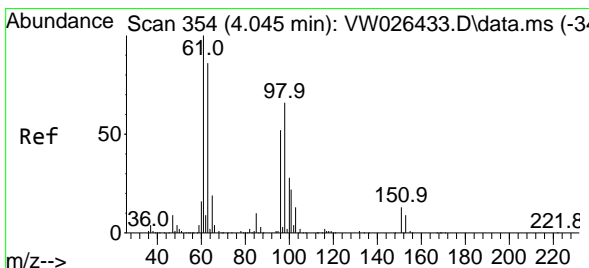
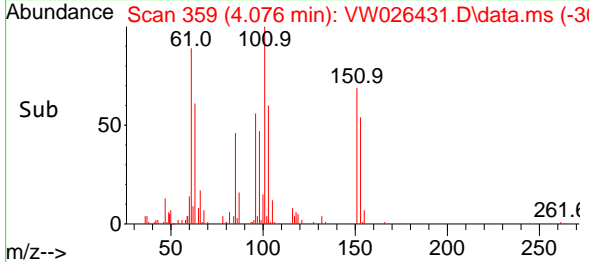
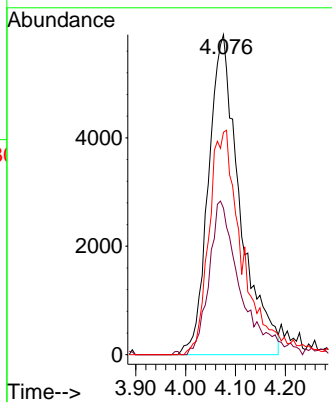


#10  
 1,1,2-Trichloro-1,2,2-trifluoroethane  
 Concen: 2.427 ug/L  
 RT: 4.076 min Scan# 359  
 Delta R.T. 0.007 min  
 Lab File: VW026431.D  
 Acq: 29 Jun 2023 11:58

Instrument : MSVOA\_W  
 ClientSampleId : VSTD2.5471

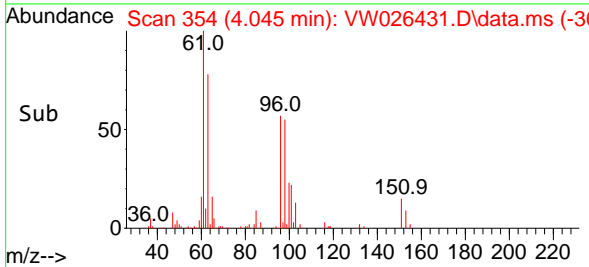
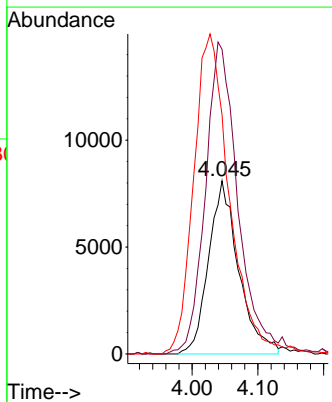
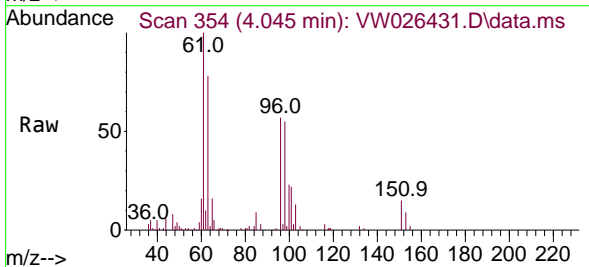


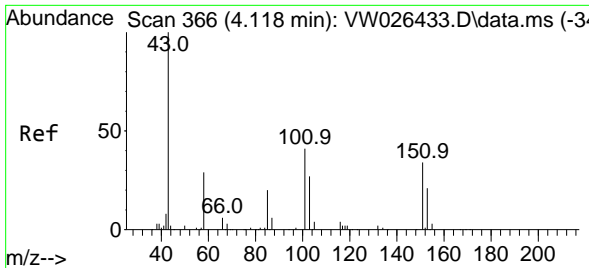
Tgt Ion	Resp	Lower	Upper
101	25802		
101	100		
85	40.0	34.1	51.1
151	28.5	53.7	80.5#



#12  
 1,1-Dichloroethene  
 Concen: 2.446 ug/L  
 RT: 4.045 min Scan# 354  
 Delta R.T. 0.000 min  
 Lab File: VW026431.D  
 Acq: 29 Jun 2023 11:58

Tgt Ion	Resp	Lower	Upper
96	25733		
96	100		
61	176.0	134.0	248.8
63	138.1	117.1	217.5

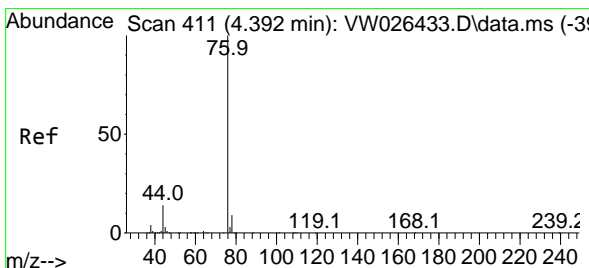
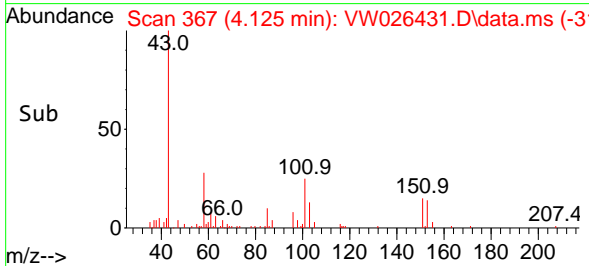
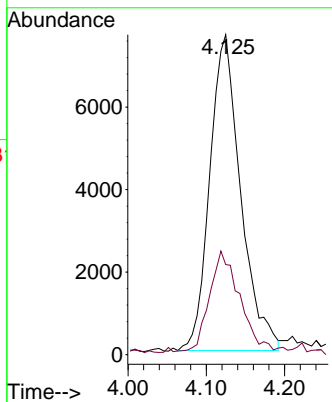
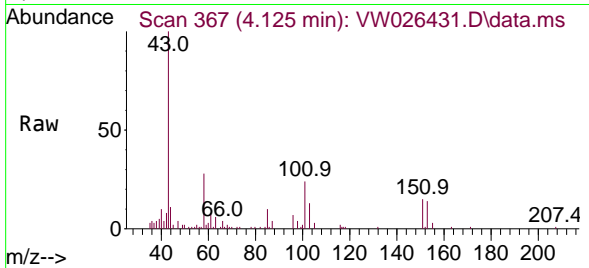




#13  
 Acetone  
 Concen: 7.326 ug/L  
 RT: 4.125 min Scan# 367  
 Delta R.T. 0.007 min  
 Lab File: VW026431.D  
 Acq: 29 Jun 2023 11:58

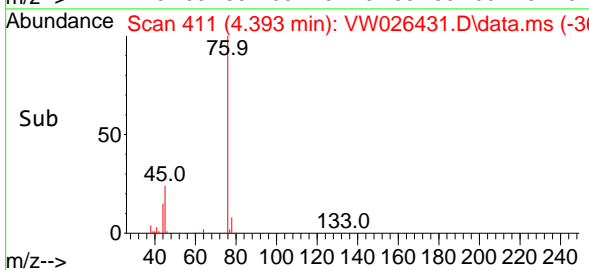
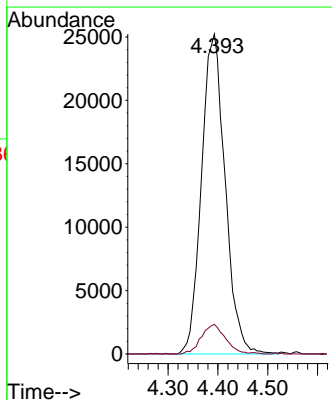
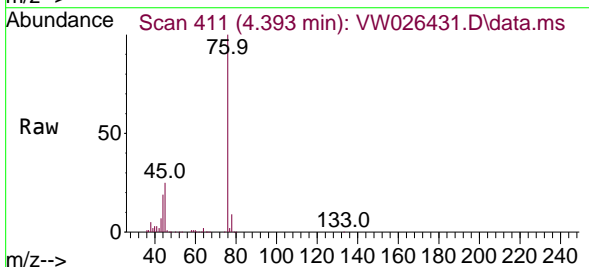
Instrument : MSVOA\_W  
 ClientSampleId : VSTD2.5471

Tgt Ion: 43 Resp: 20991  
 Ion Ratio Lower Upper  
 43 100  
 58 31.1 0.0 63.2

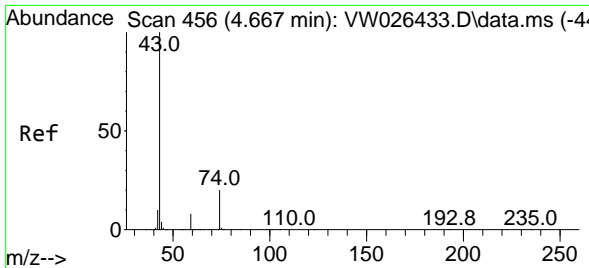


#14  
 Carbon disulfide  
 Concen: 2.432 ug/L  
 RT: 4.393 min Scan# 411  
 Delta R.T. 0.000 min  
 Lab File: VW026431.D  
 Acq: 29 Jun 2023 11:58

Tgt Ion: 76 Resp: 83095  
 Ion Ratio Lower Upper  
 76 100  
 78 9.2 7.1 10.7



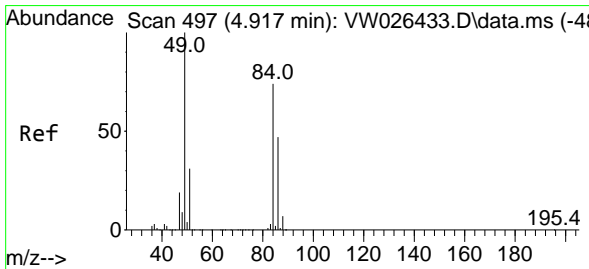
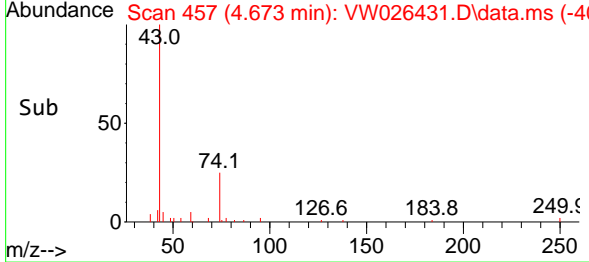
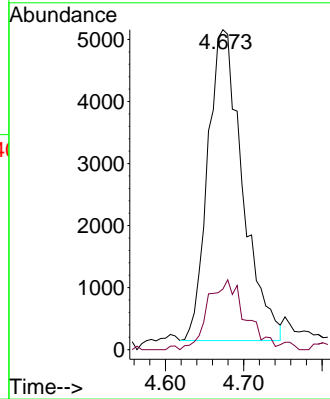
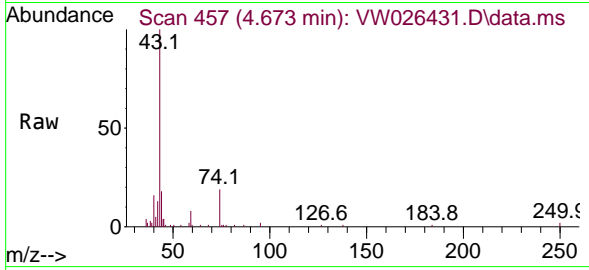




#15  
 Methyl Acetate  
 Concen: 2.484 ug/L  
 RT: 4.673 min Scan# 411  
 Delta R.T. 0.007 min  
 Lab File: VW026431.D  
 Acq: 29 Jun 2023 11:58

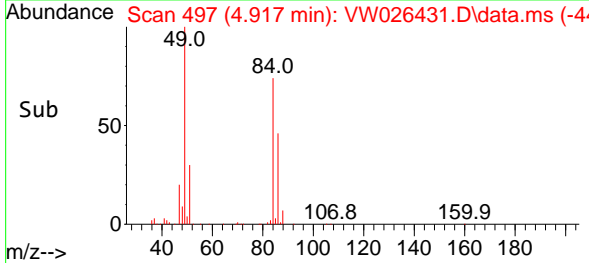
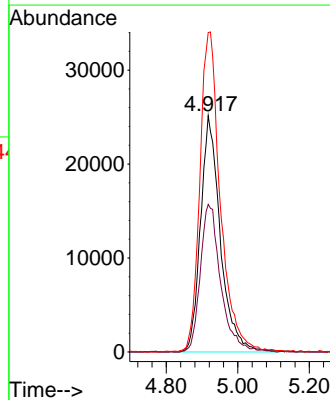
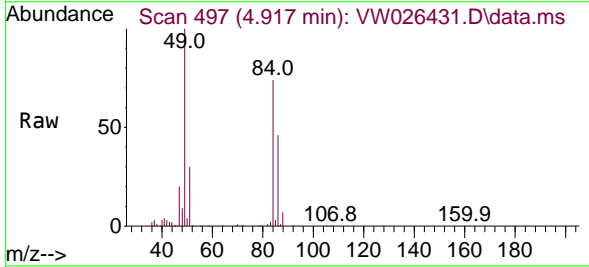
Instrument : MSVOA\_W  
 Client Sample Id : VSTD2.5471

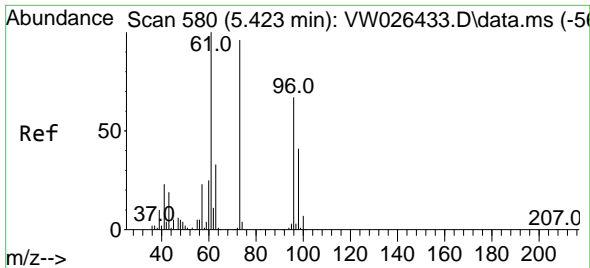
Tgt Ion: 43 Resp: 15453  
 Ion Ratio Lower Upper  
 43 100  
 74 5.1 16.6 24.8#



#16  
 Methylene chloride  
 Concen: 6.098 ug/L  
 RT: 4.917 min Scan# 497  
 Delta R.T. 0.000 min  
 Lab File: VW026431.D  
 Acq: 29 Jun 2023 11:58

Tgt Ion: 84 Resp: 96623  
 Ion Ratio Lower Upper  
 84 100  
 86 62.4 44.1 81.9  
 49 135.1 94.1 174.8



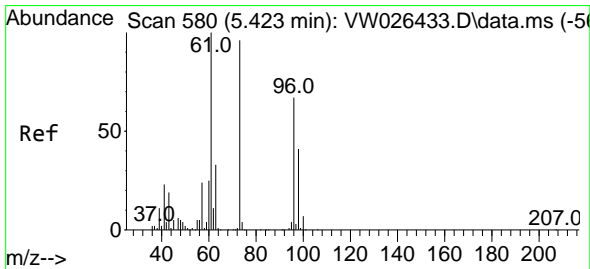
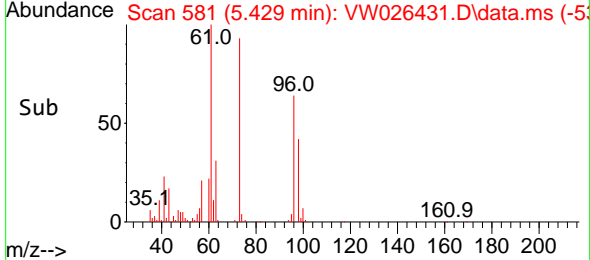
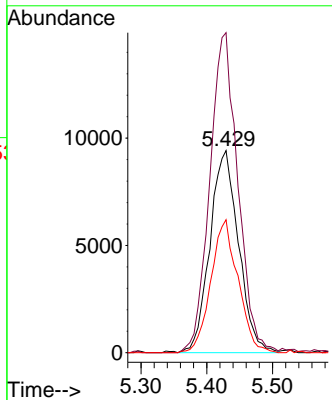
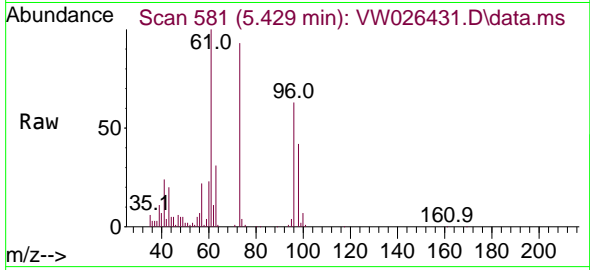


#17  
 trans-1,2-Dichloroethene  
 Concen: 2.516 ug/L  
 RT: 5.429 min Scan# 581  
 Delta R.T. 0.007 min  
 Lab File: VW026431.D  
 Acq: 29 Jun 2023 11:58

Instrument : MSVOA\_W  
 ClientSampleId : VSTD2.5471

Tgt Ion: 96 Resp: 28575

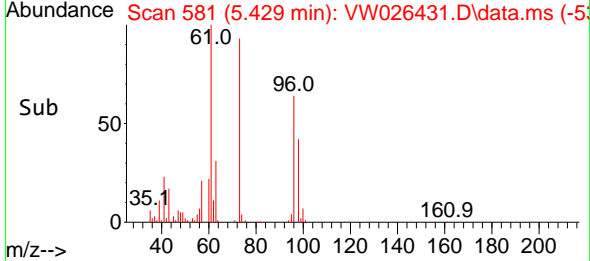
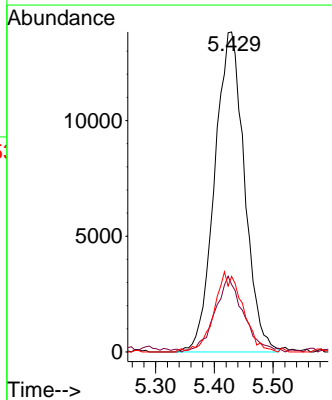
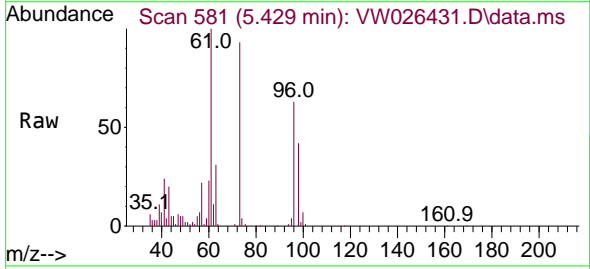
Ion	Ratio	Lower	Upper
96	100		
61	158.3	105.2	195.4
98	65.8	43.2	80.2

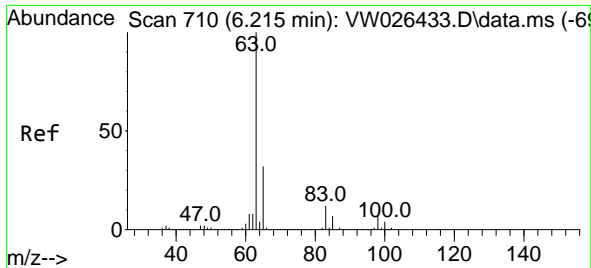


#18  
 Methyl tert-butyl Ether  
 Concen: 2.619 ug/L  
 RT: 5.429 min Scan# 581  
 Delta R.T. 0.007 min  
 Lab File: VW026431.D  
 Acq: 29 Jun 2023 11:58

Tgt Ion: 73 Resp: 48609

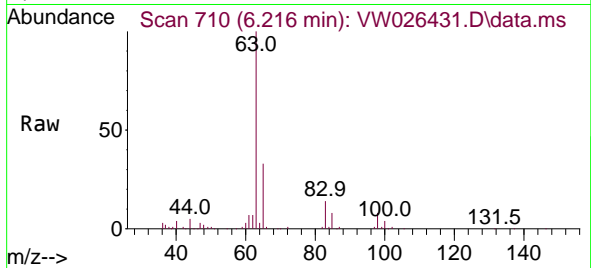
Ion	Ratio	Lower	Upper
73	100		
43	22.7	16.6	25.0
57	10.8	19.3	28.9



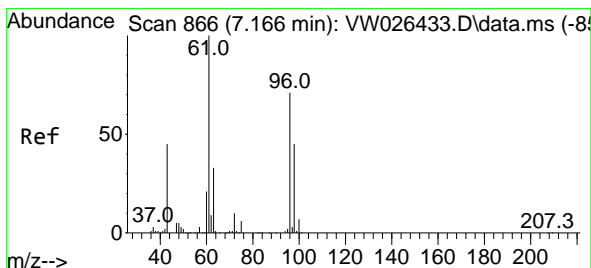
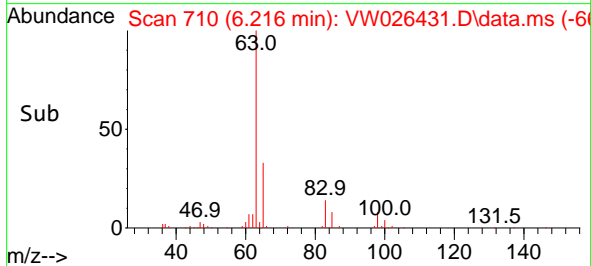
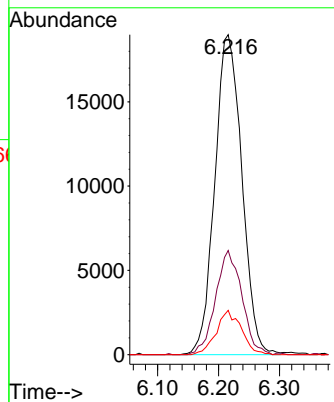


#19  
 1,1-Dichloroethane  
 Concen: 2.564 ug/L  
 RT: 6.216 min Scan# 710  
 Delta R.T. 0.000 min  
 Lab File: VW026431.D  
 Acq: 29 Jun 2023 11:58

Instrument :  
 MSVOA\_W  
 ClientSampleId :  
 VSTD2.5471

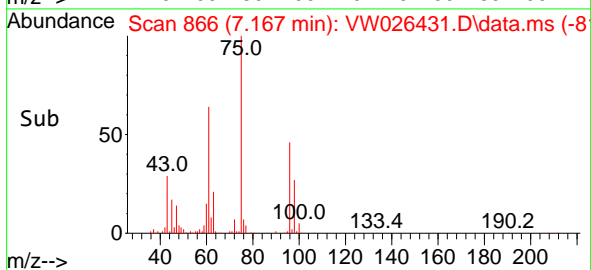
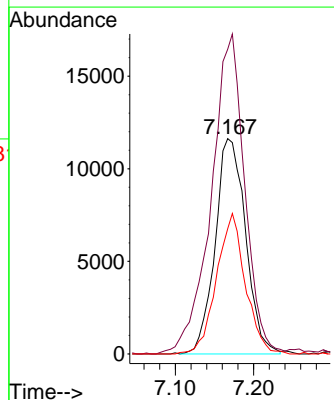
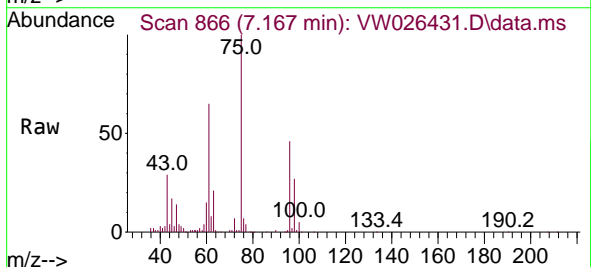


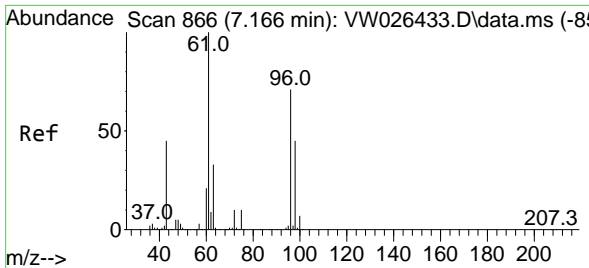
Tgt Ion	Resp	Lower	Upper
63	100		
65	32.6	22.3	41.5
83	13.9	8.3	15.3



#20  
 cis-1,2-Dichloroethene  
 Concen: 2.443 ug/L  
 RT: 7.167 min Scan# 866  
 Delta R.T. 0.000 min  
 Lab File: VW026431.D  
 Acq: 29 Jun 2023 11:58

Tgt Ion	Resp	Lower	Upper
96	100		
61	141.5	99.3	184.5
98	58.2	44.3	82.3

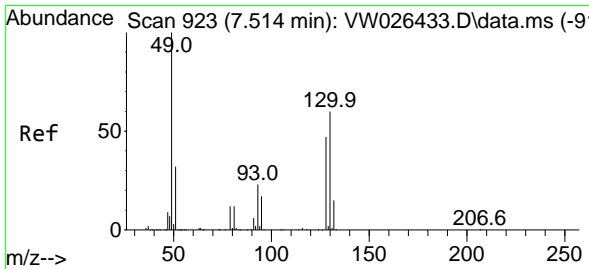
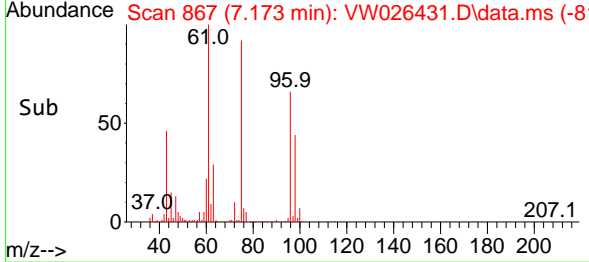
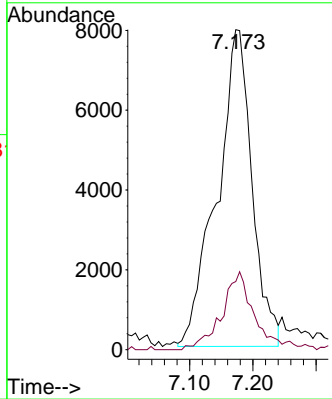
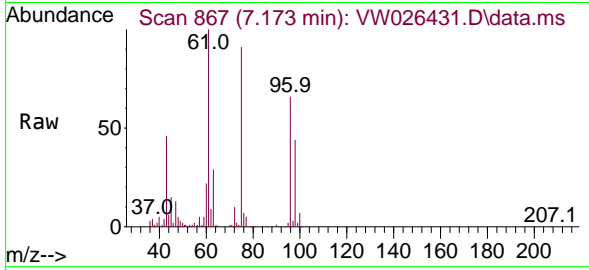




#22  
 2-Butanone  
 Concen: 6.521 ug/L  
 RT: 7.173 min Scan# 867  
 Delta R.T. 0.007 min  
 Lab File: VW026431.D  
 Acq: 29 Jun 2023 11:58

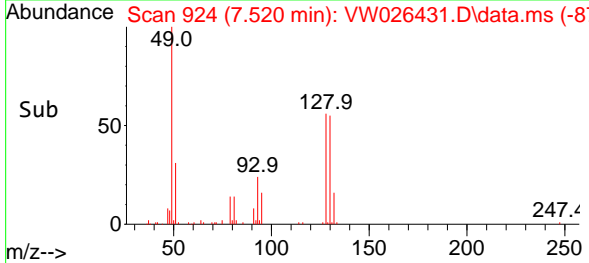
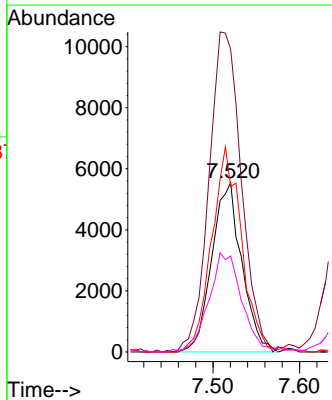
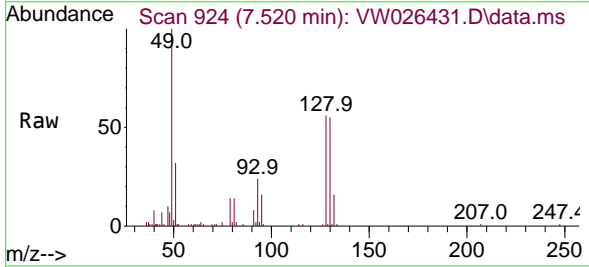
Instrument : MSVOA\_W  
 ClientSampleId : VSTD2.5471

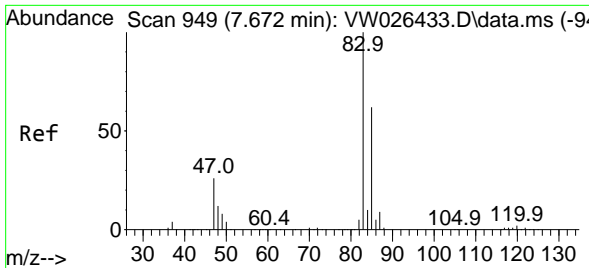
Tgt Ion: 43 Resp: 30634  
 Ion Ratio Lower Upper  
 43 100  
 72 16.6 12.6 37.8



#23  
 Bromochloromethane  
 Concen: 2.489 ug/L  
 RT: 7.520 min Scan# 924  
 Delta R.T. 0.007 min  
 Lab File: VW026431.D  
 Acq: 29 Jun 2023 11:58

Tgt Ion:128 Resp: 13315  
 Ion Ratio Lower Upper  
 128 100  
 49 178.5 149.2 277.2  
 130 97.7 89.2 165.8  
 51 56.6 54.6 82.0

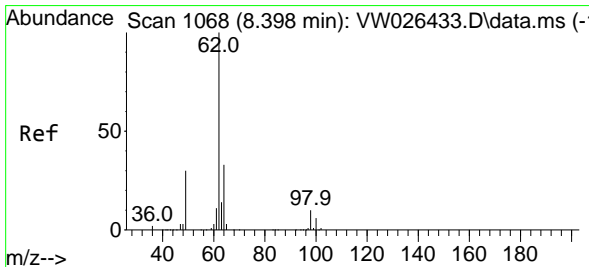
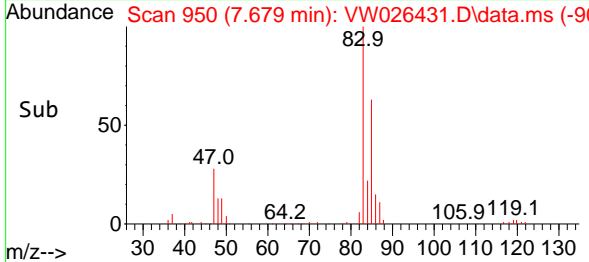
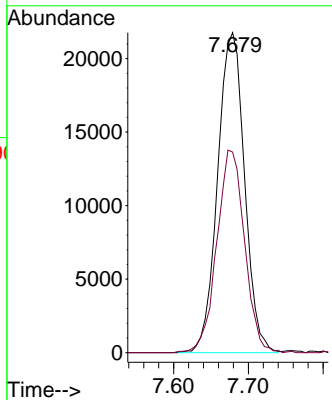
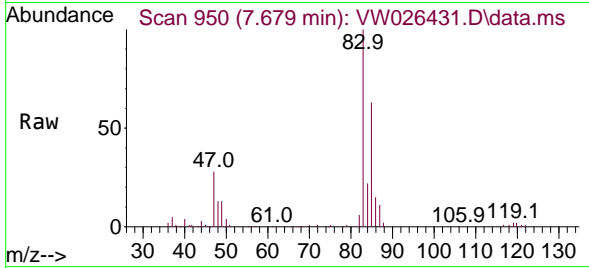




#25  
 Chloroform  
 Concen: 2.458 ug/L  
 RT: 7.679 min Scan# 91  
 Delta R.T. 0.007 min  
 Lab File: VW026431.D  
 Acq: 29 Jun 2023 11:58

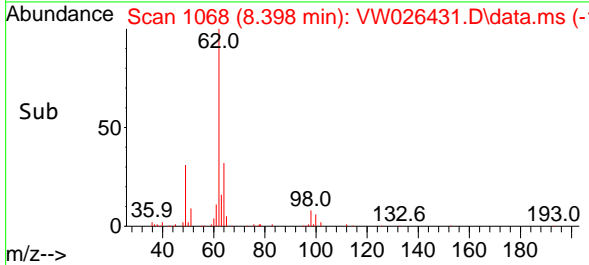
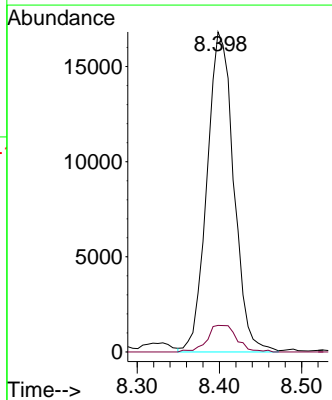
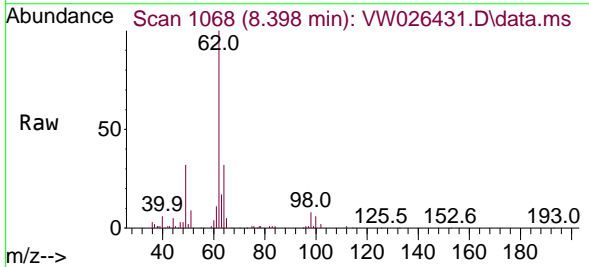
Instrument : MSVOA\_W  
 ClientSampleId : VSTD2.5471

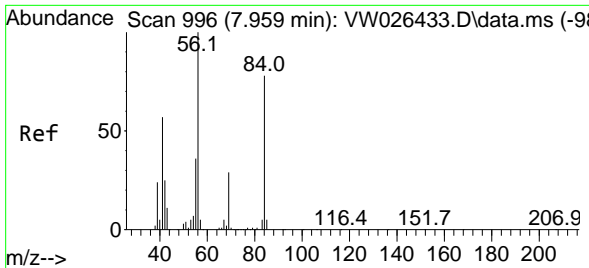
Tgt Ion: 83 Resp: 54518  
 Ion Ratio Lower Upper  
 83 100  
 85 62.7 44.4 82.4



#27  
 1,2-Dichloroethane  
 Concen: 2.509 ug/L  
 RT: 8.398 min Scan# 1068  
 Delta R.T. 0.000 min  
 Lab File: VW026431.D  
 Acq: 29 Jun 2023 11:58

Tgt Ion: 62 Resp: 38048  
 Ion Ratio Lower Upper  
 62 100  
 98 8.3 7.6 11.4

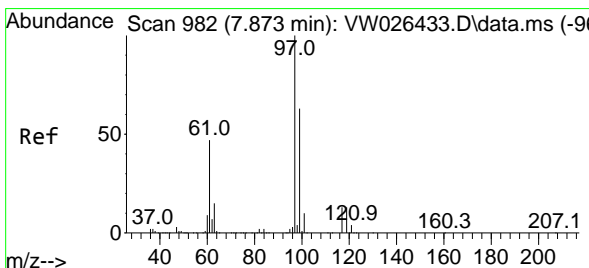
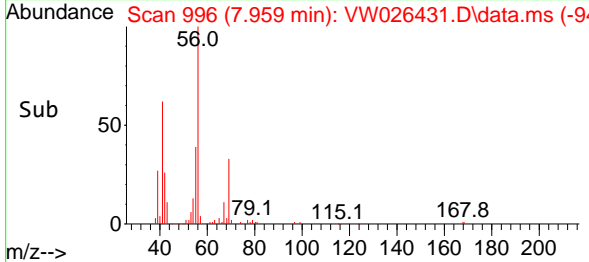
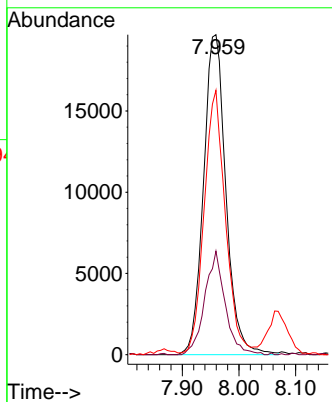
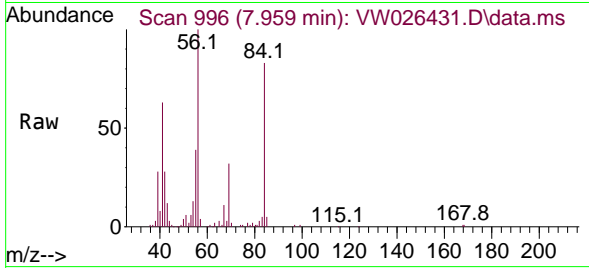




#29  
 Cyclohexane  
 Concen: 2.320 ug/L  
 RT: 7.959 min Scan# 996  
 Delta R.T. 0.000 min  
 Lab File: VW026431.D  
 Acq: 29 Jun 2023 11:58

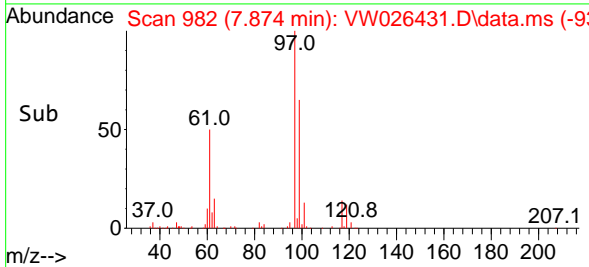
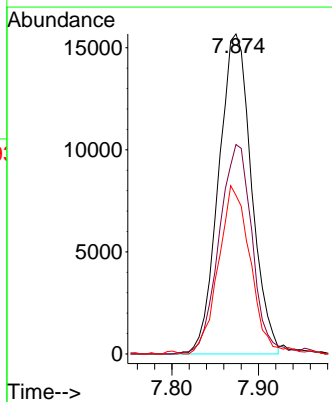
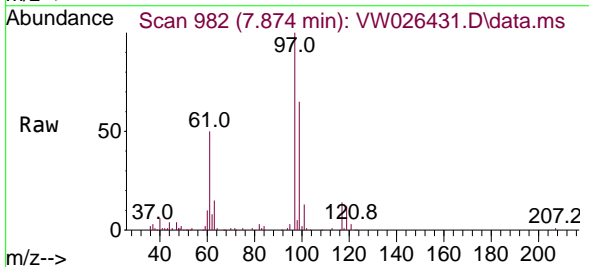
Instrument : MSVOA\_W  
 ClientSampleId : VSTD2.5471

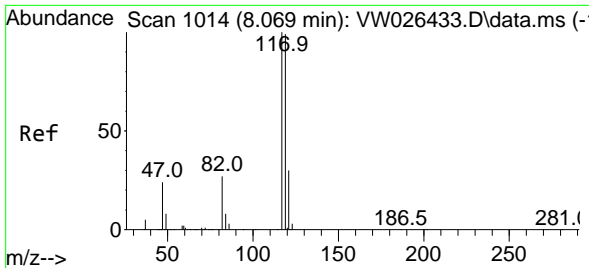
Tgt Ion	Resp	Lower	Upper
56	54071		
69	29.3	23.2	34.8
84	78.6	63.5	95.3



#30  
 1,1,1-Trichloroethane  
 Concen: 2.357 ug/L  
 RT: 7.874 min Scan# 982  
 Delta R.T. 0.000 min  
 Lab File: VW026431.D  
 Acq: 29 Jun 2023 11:58

Tgt Ion	Resp	Lower	Upper
97	41287		
99	66.0	51.3	76.9
61	50.6	39.5	59.3

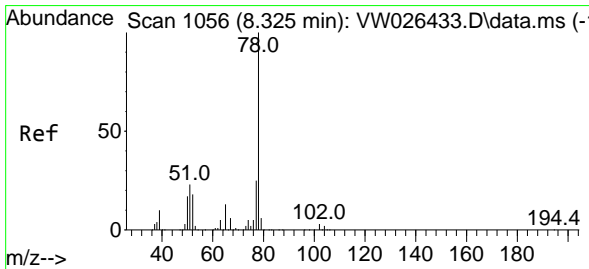
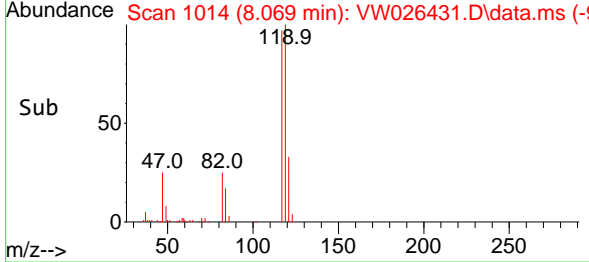
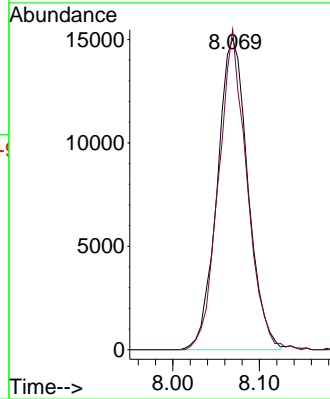
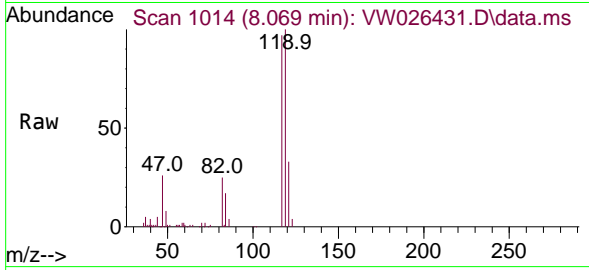




#31  
 Carbon tetrachloride  
 Concen: 2.352 ug/L  
 RT: 8.069 min Scan# 1014  
 Delta R.T. 0.000 min  
 Lab File: VW026431.D  
 Acq: 29 Jun 2023 11:58

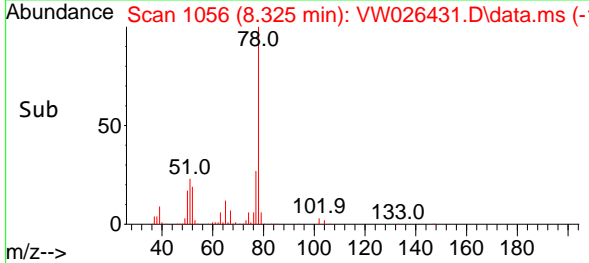
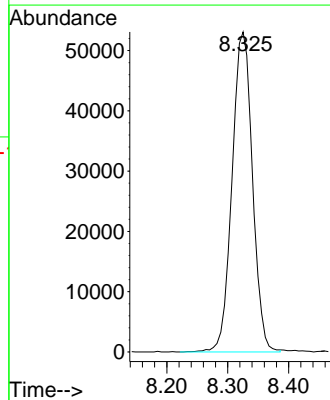
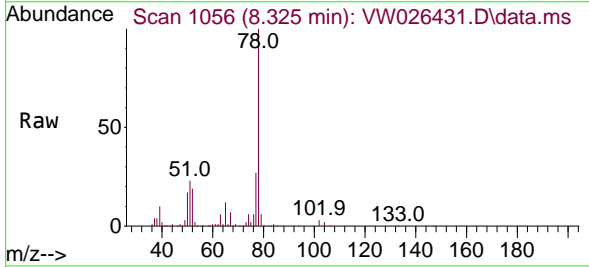
Instrument : MSVOA\_W  
 ClientSampleId : VSTD2.5471

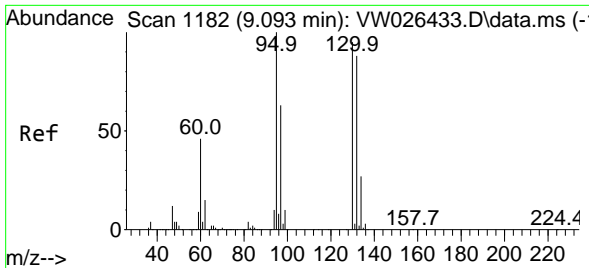
Tgt Ion:117 Resp: 37079  
 Ion Ratio Lower Upper  
 117 100  
 119 94.5 76.2 114.2



#33  
 Benzene  
 Concen: 2.399 ug/L  
 RT: 8.325 min Scan# 1056  
 Delta R.T. 0.000 min  
 Lab File: VW026431.D  
 Acq: 29 Jun 2023 11:58

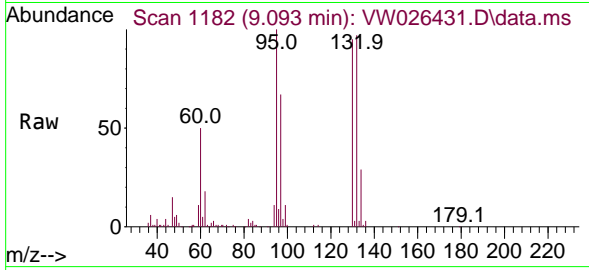
Tgt Ion: 78 Resp: 123504





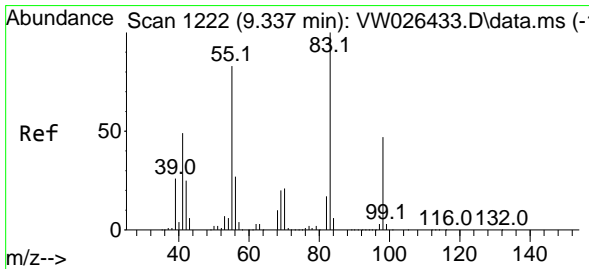
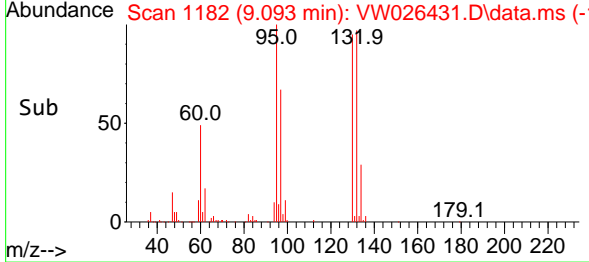
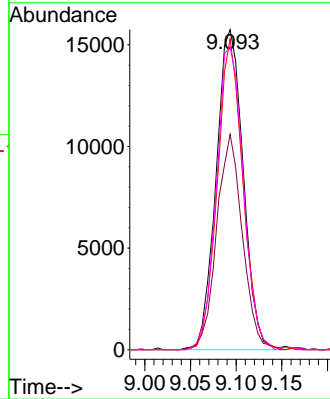
#34  
 Trichloroethene  
 Concen: 2.477 ug/L  
 RT: 9.093 min Scan# 1182  
 Delta R.T. 0.000 min  
 Lab File: VW026431.D  
 Acq: 29 Jun 2023 11:58

Instrument : MSVOA\_W  
 ClientSampleId : VSTD2.5471

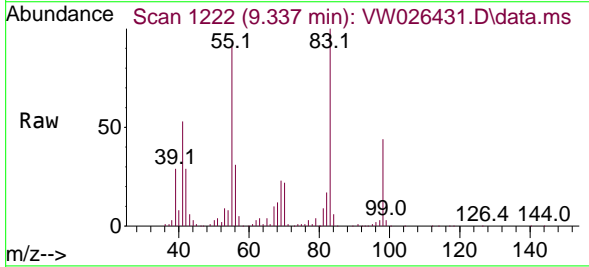


Tgt Ion: 95 Resp: 32487

Ion	Ratio	Lower	Upper
95	100		
97	67.3	44.1	81.9
132	97.2	61.8	114.8
130	94.7	66.4	123.2

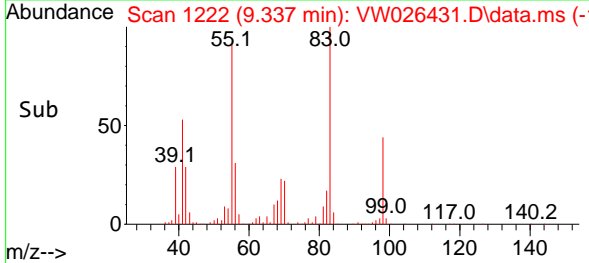
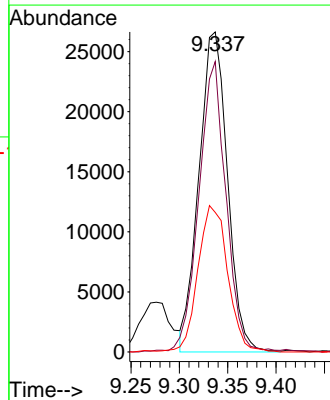


#35  
 Methylcyclohexane  
 Concen: 2.344 ug/L  
 RT: 9.337 min Scan# 1222  
 Delta R.T. 0.000 min  
 Lab File: VW026431.D  
 Acq: 29 Jun 2023 11:58

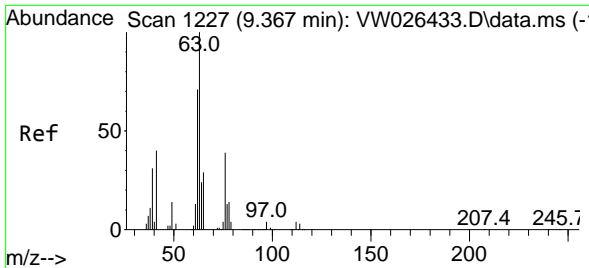


Tgt Ion: 83 Resp: 54756

Ion	Ratio	Lower	Upper
83	100		
55	86.0	66.5	99.7
98	47.7	37.0	55.6



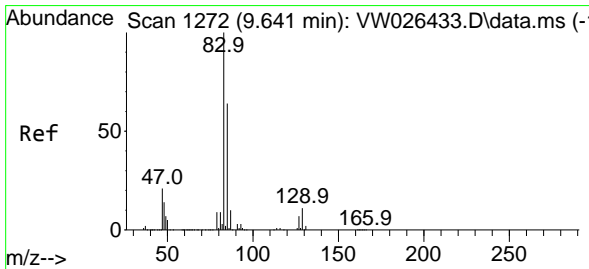
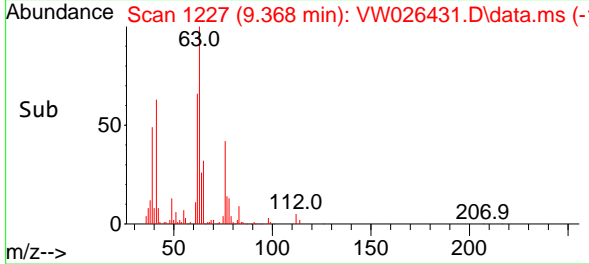
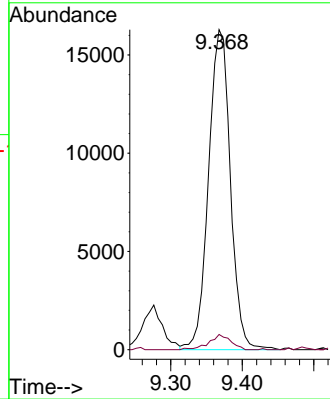
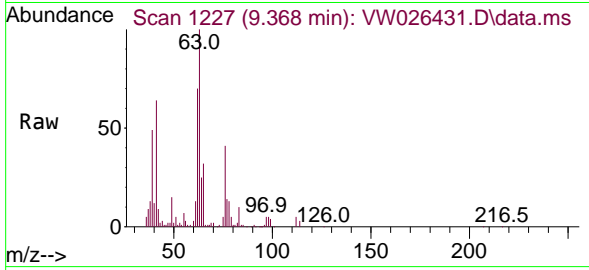




#37  
 1,2-Dichloropropane  
 Concen: 2.528 ug/L  
 RT: 9.368 min Scan# 11  
 Delta R.T. 0.000 min  
 Lab File: VW026431.D  
 Acq: 29 Jun 2023 11:58

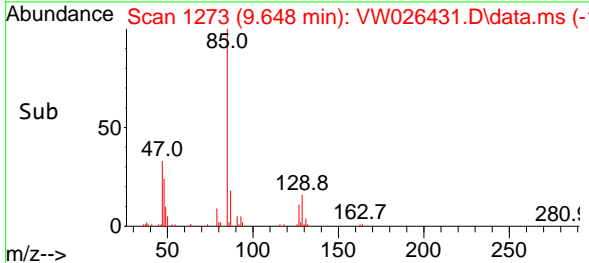
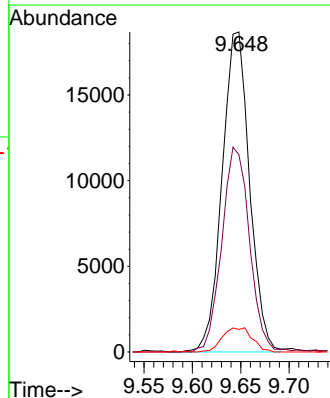
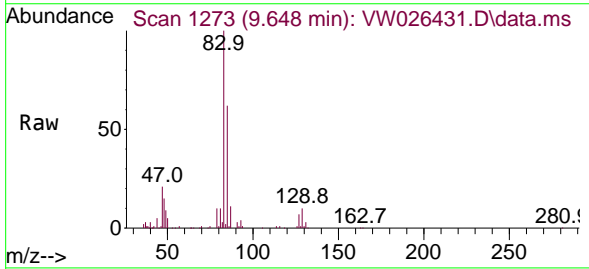
Instrument :  
 MSVOA\_W  
 ClientSampleId :  
 VSTD2.5471

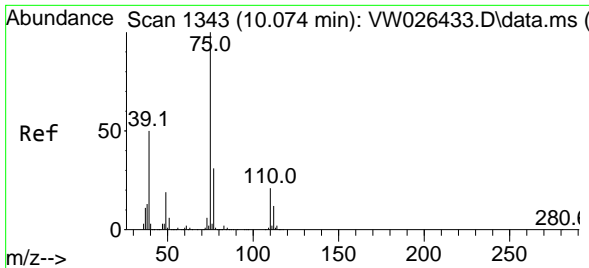
Tgt Ion: 63 Resp: 34546  
 Ion Ratio Lower Upper  
 63 100  
 112 4.5 3.4 5.0



#38  
 Bromodichloromethane  
 Concen: 2.404 ug/L  
 RT: 9.648 min Scan# 1273  
 Delta R.T. 0.007 min  
 Lab File: VW026431.D  
 Acq: 29 Jun 2023 11:58

Tgt Ion: 83 Resp: 36877  
 Ion Ratio Lower Upper  
 83 100  
 85 61.7 45.1 83.7  
 127 7.1 5.9 8.9

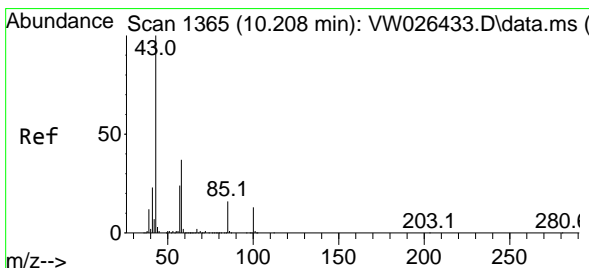
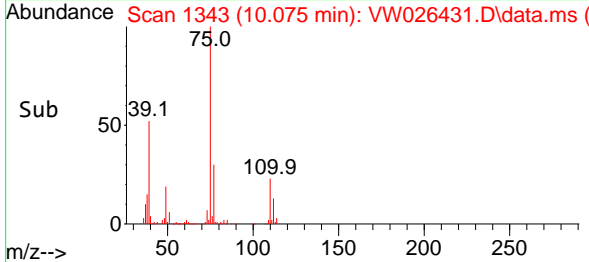
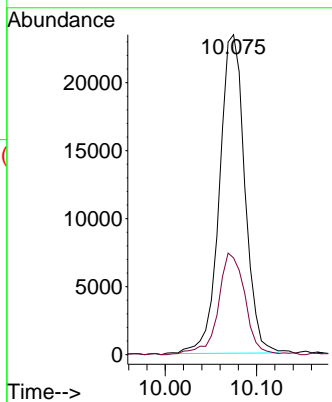
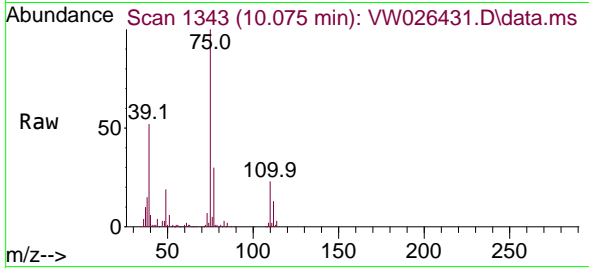




#39  
 cis-1,3-Dichloropropene  
 Concen: 2.204 ug/L  
 RT: 10.075 min Scan# 11  
 Delta R.T. 0.000 min  
 Lab File: VW026431.D  
 Acq: 29 Jun 2023 11:58

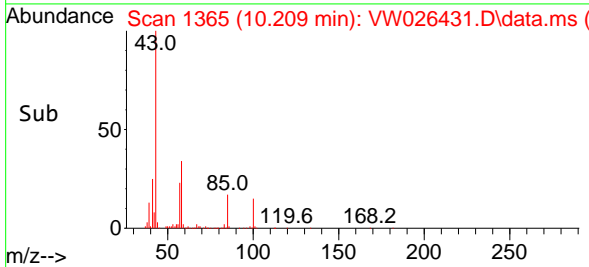
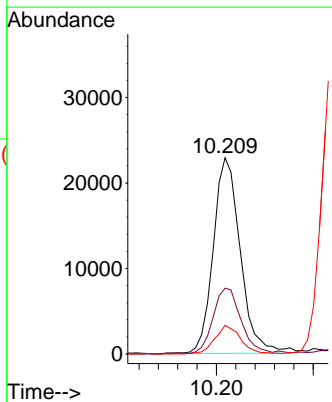
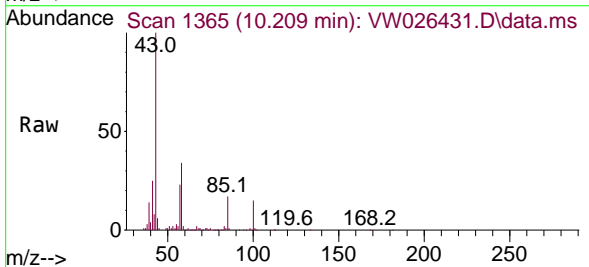
Instrument : MSVOA\_W  
 ClientSampleId : VSTD2.5471

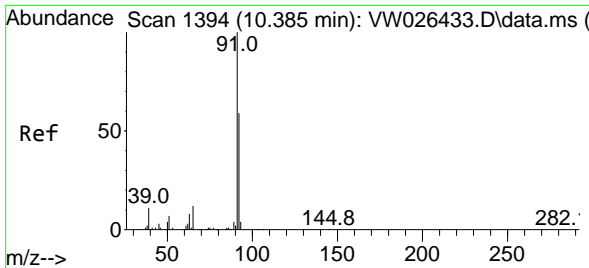
Tgt Ion: 75 Resp: 45093  
 Ion Ratio Lower Upper  
 75 100  
 77 30.3 21.9 40.7



#40  
 4-Methyl-2-pentanone  
 Concen: 4.690 ug/L  
 RT: 10.209 min Scan# 1365  
 Delta R.T. 0.000 min  
 Lab File: VW026431.D  
 Acq: 29 Jun 2023 11:58

Tgt Ion: 43 Resp: 44011  
 Ion Ratio Lower Upper  
 43 100  
 58 34.9 29.7 44.5  
 100 14.2 10.9 16.3

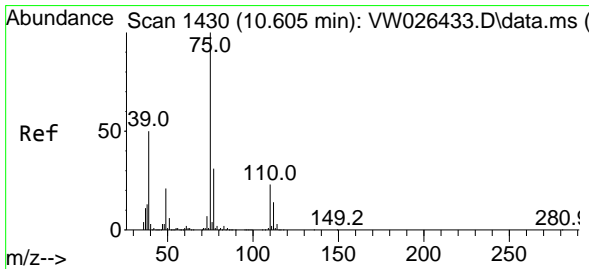
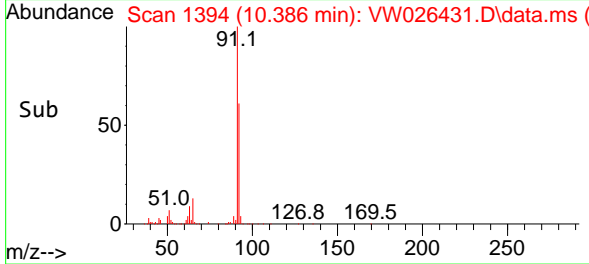
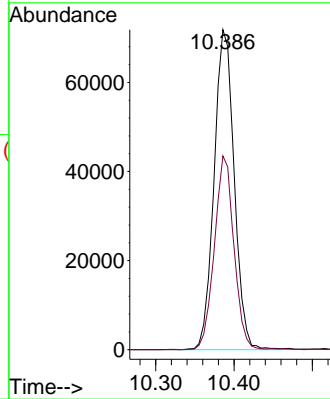
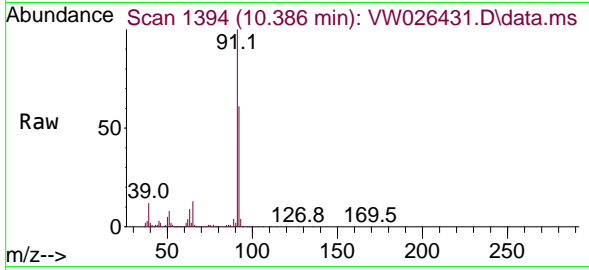




#42  
 Toluene  
 Concen: 2.434 ug/L  
 RT: 10.386 min Scan# 11  
 Delta R.T. 0.000 min  
 Lab File: VW026431.D  
 Acq: 29 Jun 2023 11:58

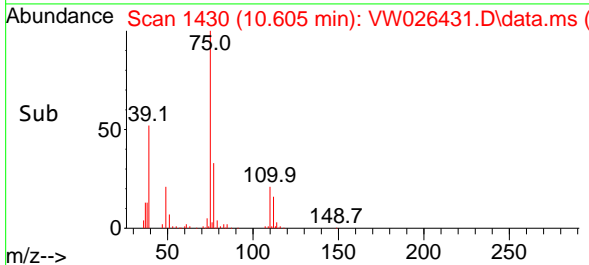
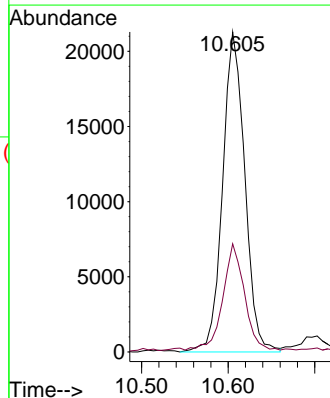
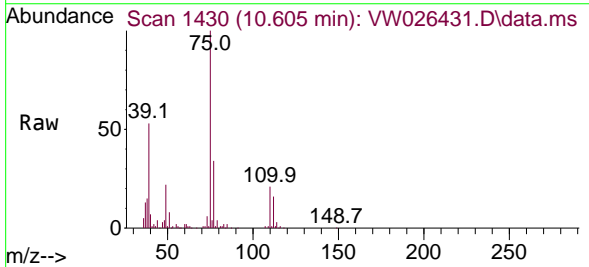
Instrument : MSVOA\_W  
 ClientSampleId : VSTD2.5471

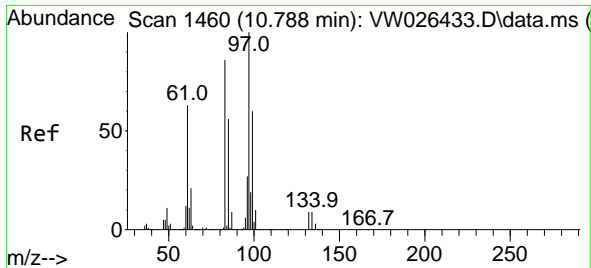
Tgt Ion: 91 Resp: 128191  
 Ion Ratio Lower Upper  
 91 100  
 92 60.5 41.4 76.8



#44  
 trans-1,3-Dichloropropene  
 Concen: 2.265 ug/L  
 RT: 10.605 min Scan# 1430  
 Delta R.T. 0.000 min  
 Lab File: VW026431.D  
 Acq: 29 Jun 2023 11:58

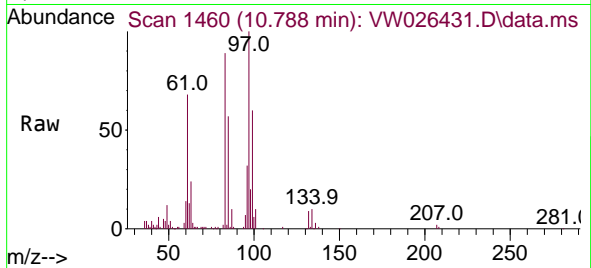
Tgt Ion: 75 Resp: 37868  
 Ion Ratio Lower Upper  
 75 100  
 77 33.8 21.8 40.6





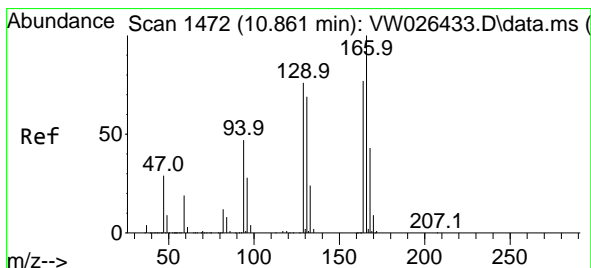
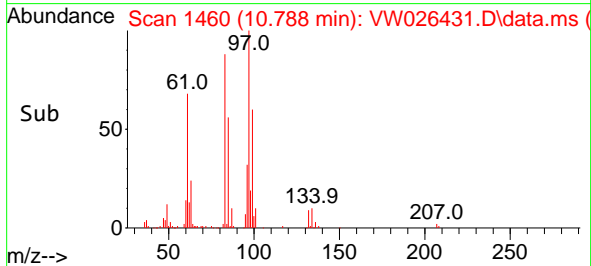
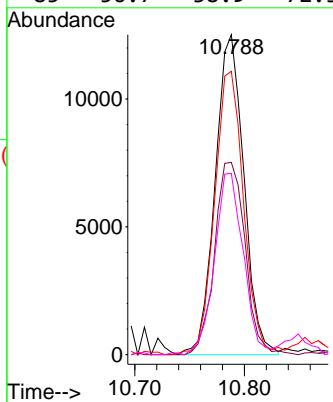
#45  
 1,1,2-Trichloroethane  
 Concen: 2.444 ug/L  
 RT: 10.788 min Scan# 1460  
 Delta R.T. 0.000 min  
 Lab File: VW026431.D  
 Acq: 29 Jun 2023 11:58

Instrument : MSVOA\_W  
 ClientSampleId : VSTD2.5471



Tgt Ion: 97 Resp: 22753

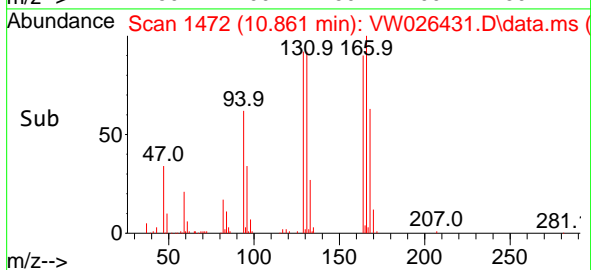
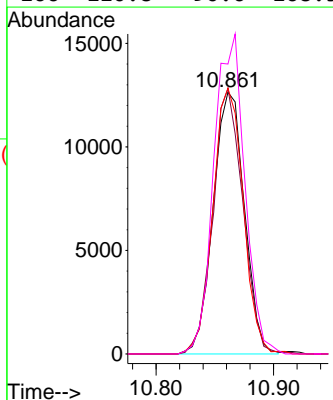
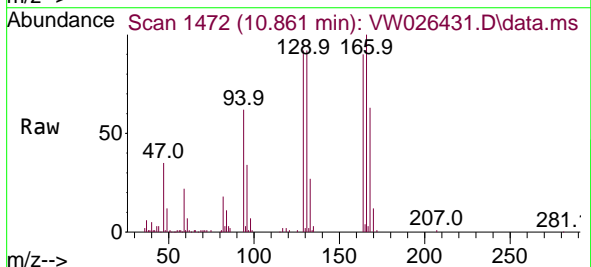
Ion	Ratio	Lower	Upper
97	100		
99	60.1	42.1	78.3
83	88.6	60.5	112.5
85	56.7	38.9	72.3

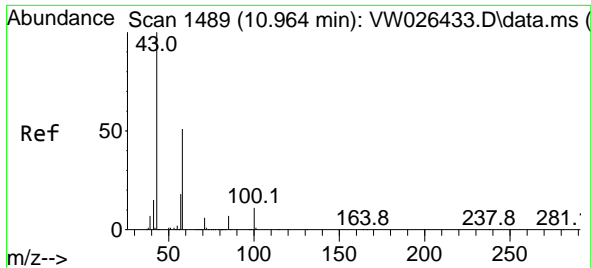


#46  
 Tetrachloroethene  
 Concen: 2.517 ug/L  
 RT: 10.861 min Scan# 1472  
 Delta R.T. 0.000 min  
 Lab File: VW026431.D  
 Acq: 29 Jun 2023 11:58

Tgt Ion: 164 Resp: 23342

Ion	Ratio	Lower	Upper
164	100		
129	101.5	69.0	128.2
131	101.5	62.6	116.3
166	110.8	90.6	168.3



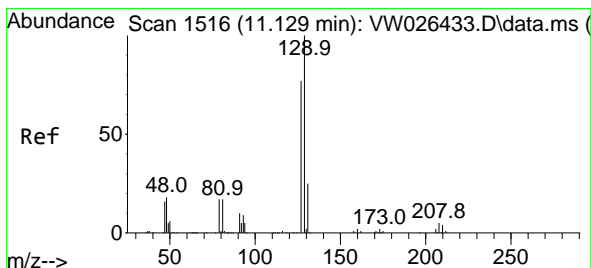
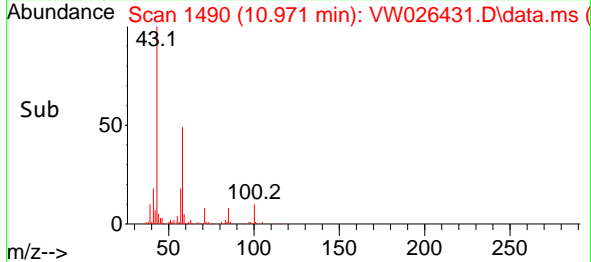
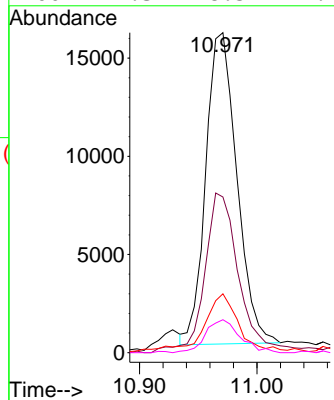
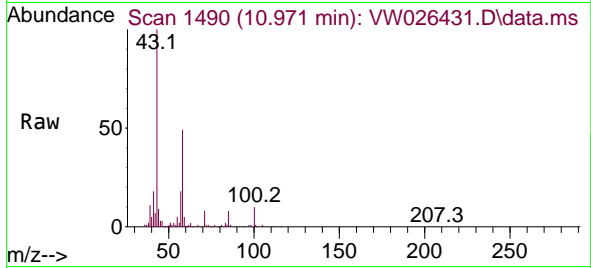


#48  
 2-Hexanone  
 Concen: 4.627 ug/L  
 RT: 10.971 min Scan# 1489  
 Delta R.T. 0.007 min  
 Lab File: VW026431.D  
 Acq: 29 Jun 2023 11:58

Instrument :  
 MSVOA\_W  
 ClientSampleId :  
 VSTD2.5471

Tgt Ion: 43 Resp: 29143

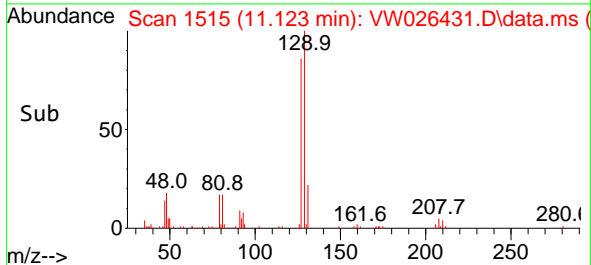
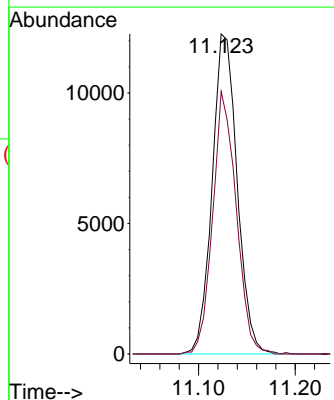
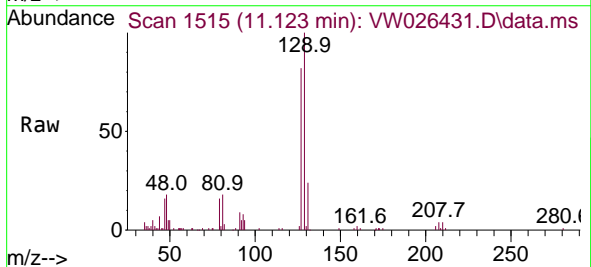
Ion	Ratio	Lower	Upper
43	100		
58	56.4	42.1	63.1
57	17.8	14.5	21.7
100	11.3	8.5	12.7

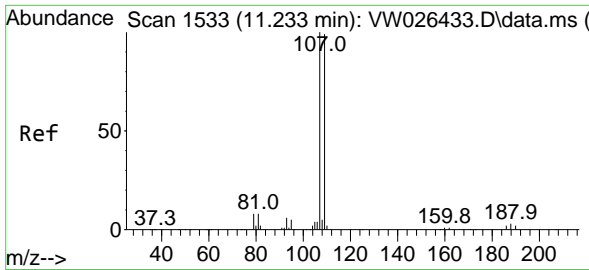


#49  
 Dibromochloromethane  
 Concen: 2.380 ug/L  
 RT: 11.123 min Scan# 1515  
 Delta R.T. -0.006 min  
 Lab File: VW026431.D  
 Acq: 29 Jun 2023 11:58

Tgt Ion: 129 Resp: 22073

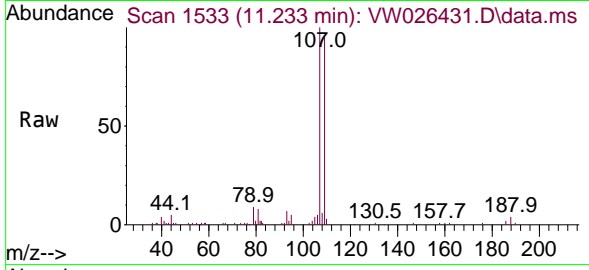
Ion	Ratio	Lower	Upper
129	100		
127	82.0	54.0	100.4



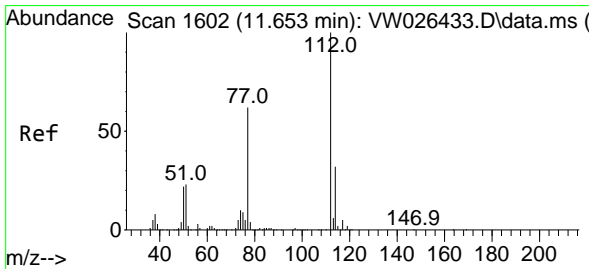
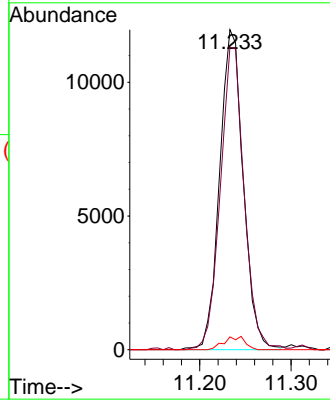
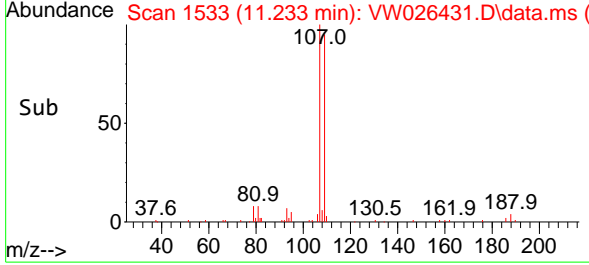


#50  
 1,2-Dibromoethane  
 Concen: 2.510 ug/L  
 RT: 11.233 min Scan# 1533  
 Delta R.T. 0.000 min  
 Lab File: VW026431.D  
 Acq: 29 Jun 2023 11:58

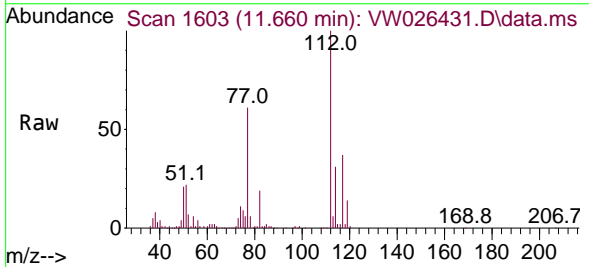
Instrument : MSVOA\_W  
 ClientSampleId : VSTD2.5471



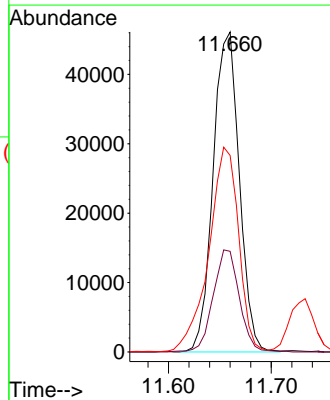
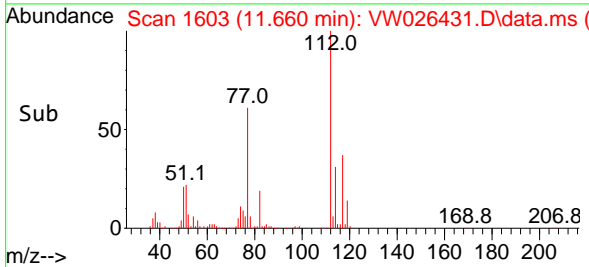
Tgt Ion:107 Resp: 21492  
 Ion Ratio Lower Upper  
 107 100  
 109 94.6 69.0 128.2  
 188 4.0 2.8 4.2

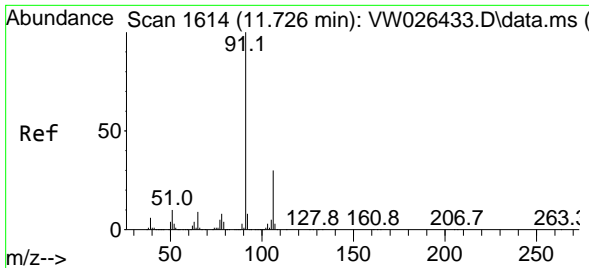


#51  
 Chlorobenzene  
 Concen: 2.500 ug/L  
 RT: 11.660 min Scan# 1603  
 Delta R.T. 0.007 min  
 Lab File: VW026431.D  
 Acq: 29 Jun 2023 11:58



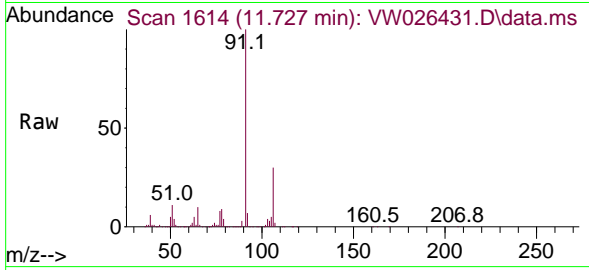
Tgt Ion:112 Resp: 81490  
 Ion Ratio Lower Upper  
 112 100  
 114 31.4 22.3 41.5  
 77 61.4 49.6 74.4



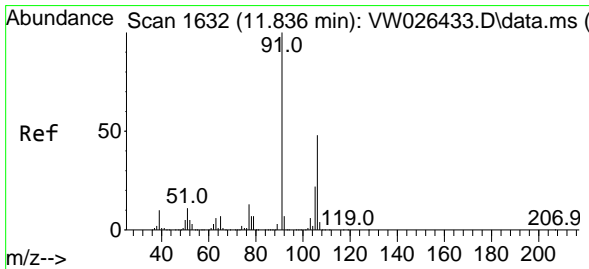
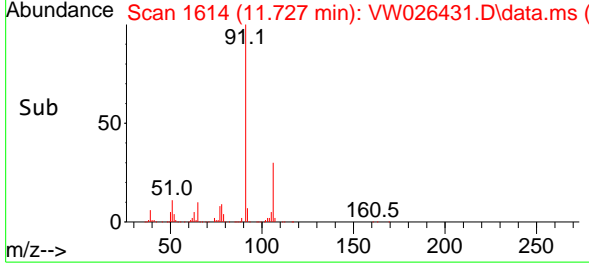
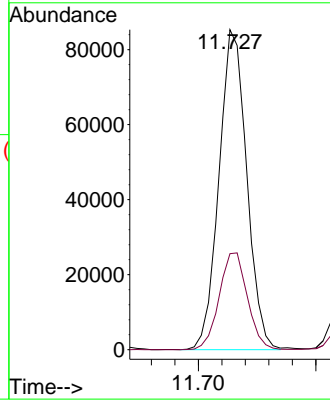


#52  
 Ethylbenzene  
 Concen: 2.361 ug/L  
 RT: 11.727 min Scan# 1614  
 Delta R.T. 0.000 min  
 Lab File: VW026431.D  
 Acq: 29 Jun 2023 11:58

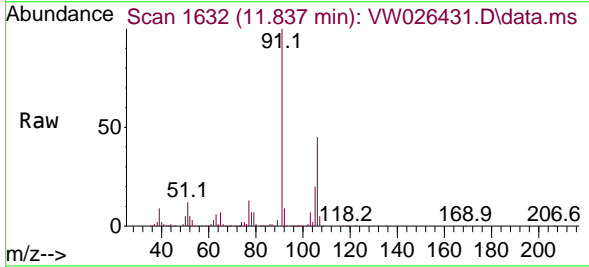
Instrument : MSVOA\_W  
 ClientSampleId : VSTD2.5471



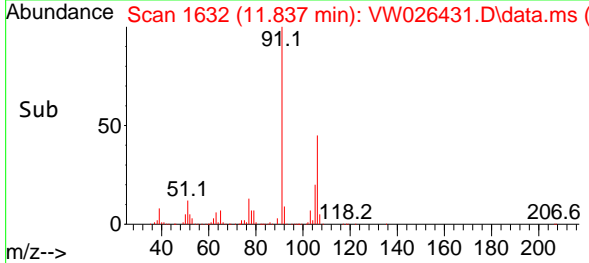
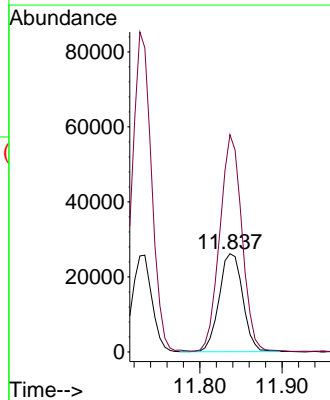
Tgt Ion: 91 Resp: 139944  
 Ion Ratio Lower Upper  
 91 100  
 106 30.0 20.9 38.7

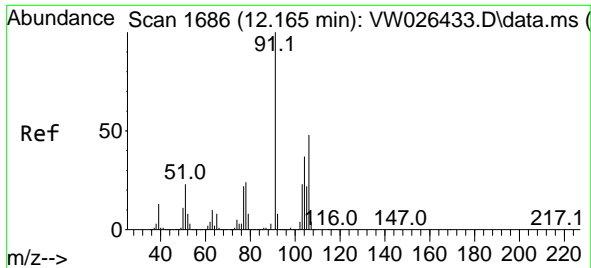


#53  
 m,p-Xylene  
 Concen: 2.373 ug/L  
 RT: 11.837 min Scan# 1632  
 Delta R.T. 0.000 min  
 Lab File: VW026431.D  
 Acq: 29 Jun 2023 11:58



Tgt Ion: 106 Resp: 52149  
 Ion Ratio Lower Upper  
 106 100  
 91 221.0 146.7 272.5

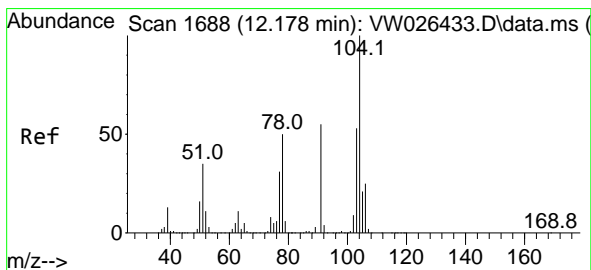
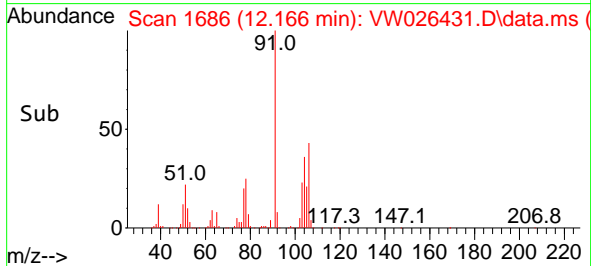
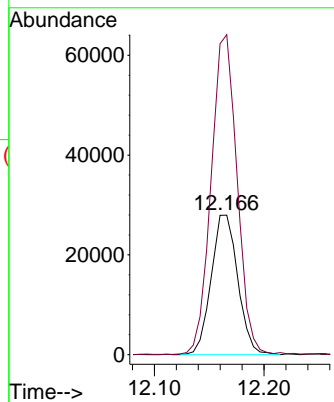
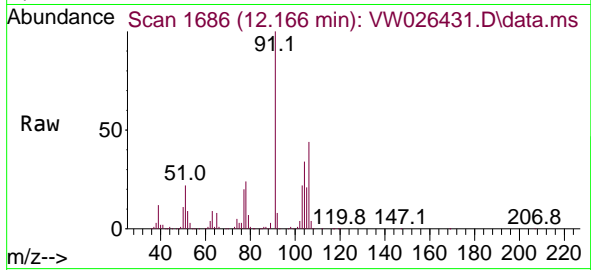




#54  
 o-Xylene  
 Concen: 2.315 ug/L  
 RT: 12.166 min Scan# 1686  
 Delta R.T. 0.000 min  
 Lab File: VW026431.D  
 Acq: 29 Jun 2023 11:58

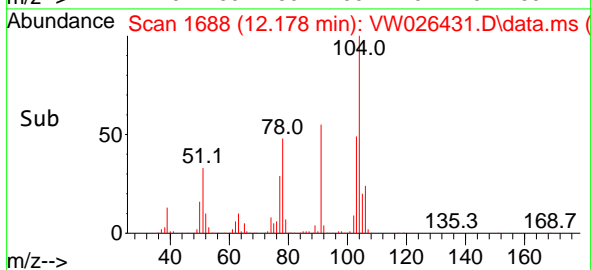
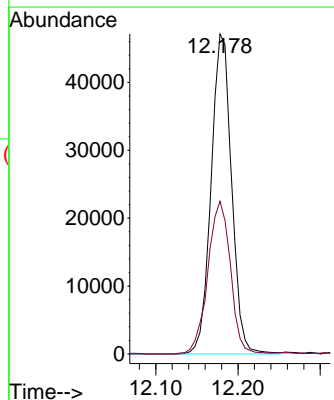
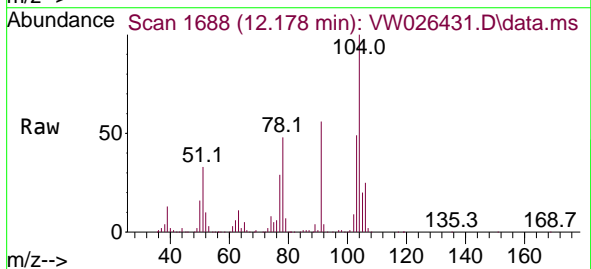
Instrument : MSVOA\_W  
 ClientSampleId : VSTD2.5471

Tgt Ion:106 Resp: 47190  
 Ion Ratio Lower Upper  
 106 100  
 91 229.4 145.5 270.1

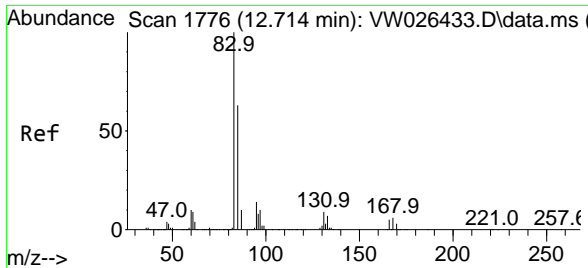


#55  
 Styrene  
 Concen: 2.339 ug/L  
 RT: 12.178 min Scan# 1688  
 Delta R.T. 0.000 min  
 Lab File: VW026431.D  
 Acq: 29 Jun 2023 11:58

Tgt Ion:104 Resp: 81396  
 Ion Ratio Lower Upper  
 104 100  
 78 47.7 34.8 64.6





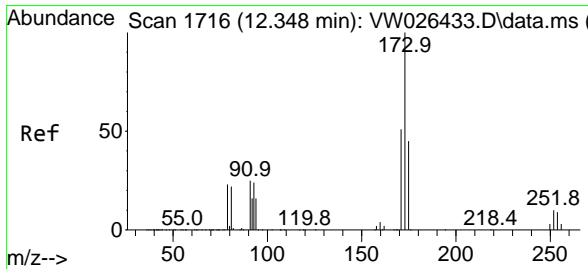
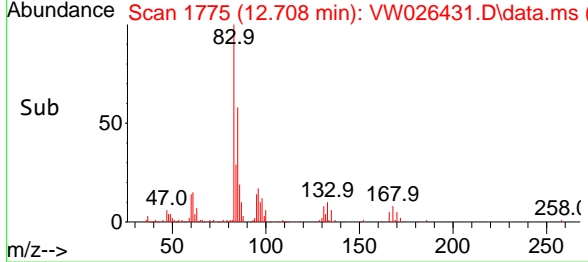
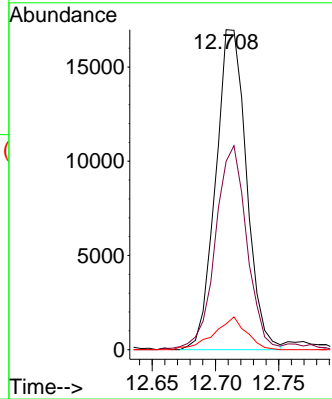
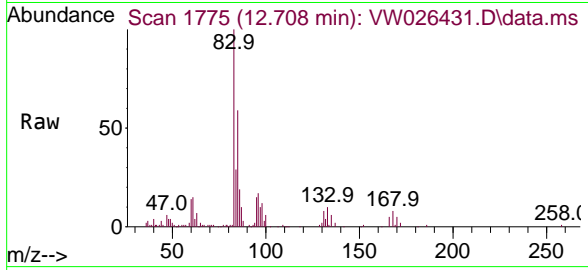


#57  
 1,1,2,2-Tetrachloroethane  
 Concen: 2.531 ug/L  
 RT: 12.708 min Scan# 1775  
 Delta R.T. -0.006 min  
 Lab File: VW026431.D  
 Acq: 29 Jun 2023 11:58

Instrument : MSVOA\_W  
 ClientSampleId : VSTD2.5471

Tgt Ion: 83 Resp: 28778

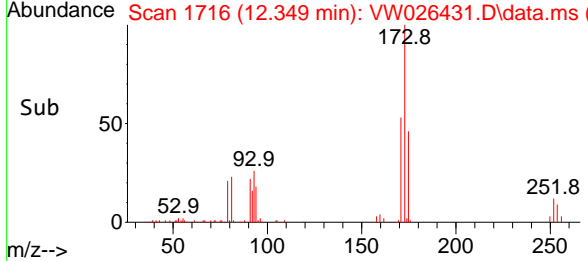
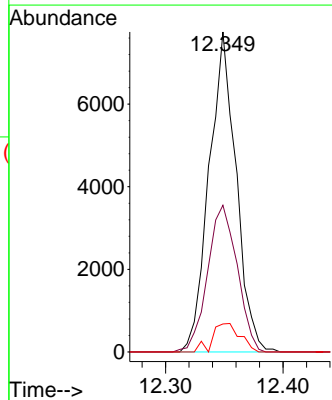
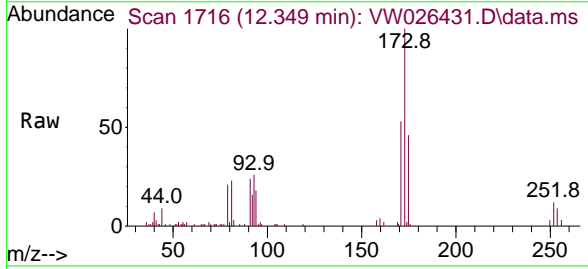
Ion	Ratio	Lower	Upper
83	100		
85	58.8	44.6	82.8
131	8.1	7.2	10.8

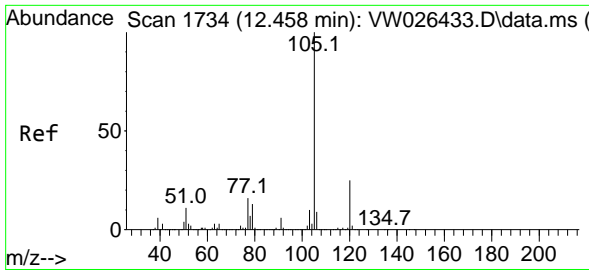


#59  
 Bromoform  
 Concen: 2.400 ug/L  
 RT: 12.349 min Scan# 1716  
 Delta R.T. 0.000 min  
 Lab File: VW026431.D  
 Acq: 29 Jun 2023 11:58

Tgt Ion: 173 Resp: 12378

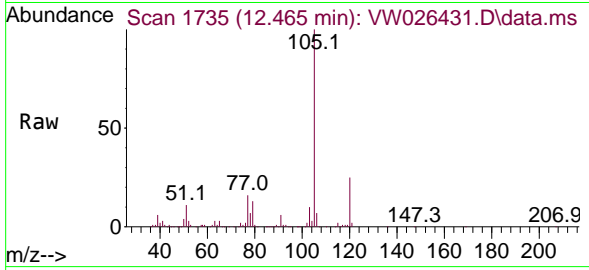
Ion	Ratio	Lower	Upper
173	100		
175	50.3	37.4	56.2
254	8.4	7.3	10.9





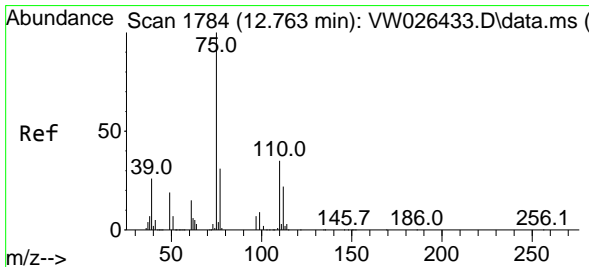
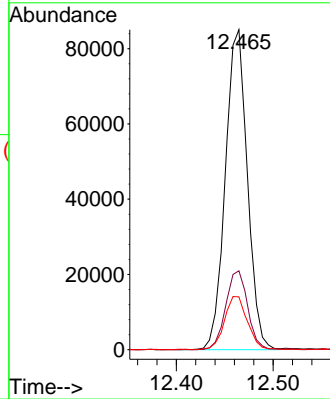
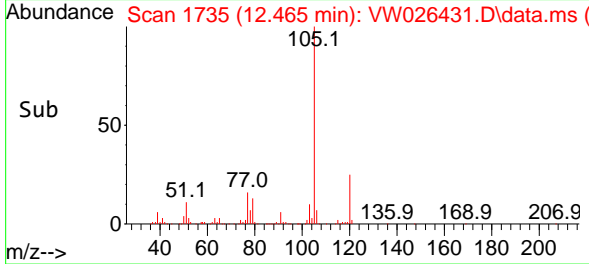
#60  
 Isopropylbenzene  
 Concen: 2.371 ug/L  
 RT: 12.465 min Scan# 1735  
 Delta R.T. 0.007 min  
 Lab File: VW026431.D  
 Acq: 29 Jun 2023 11:58

Instrument : MSVOA\_W  
 ClientSampleId : VSTD2.5471

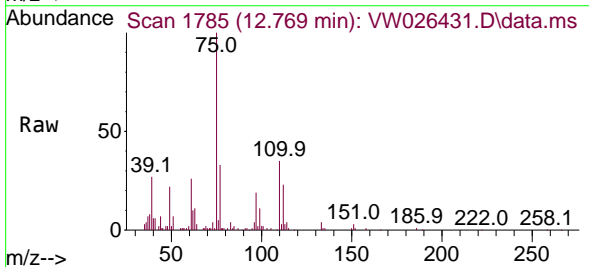


Tgt Ion:105 Resp: 134680

Ion	Ratio	Lower	Upper
105	100		
120	24.5	20.5	30.7
77	17.3	12.9	19.3

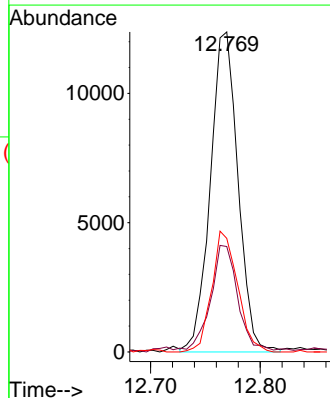
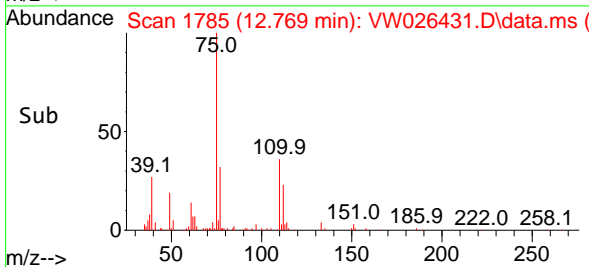


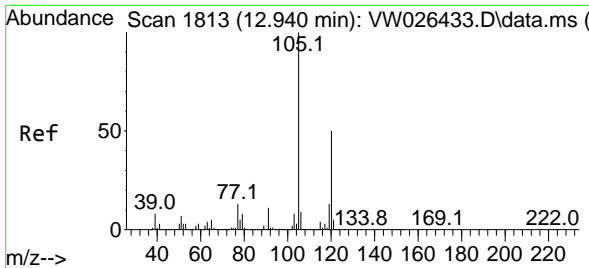
#61  
 1,2,3-Trichloropropane  
 Concen: 2.554 ug/L  
 RT: 12.769 min Scan# 1785  
 Delta R.T. 0.007 min  
 Lab File: VW026431.D  
 Acq: 29 Jun 2023 11:58



Tgt Ion: 75 Resp: 21741

Ion	Ratio	Lower	Upper
75	100		
77	32.7	25.2	37.8
110	35.2	28.2	42.4

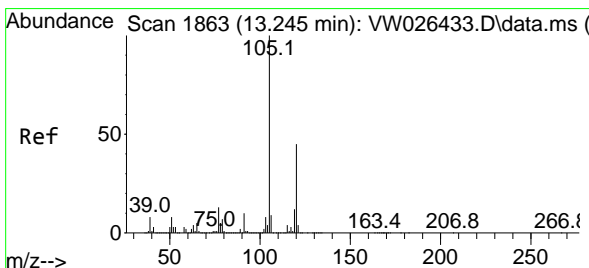
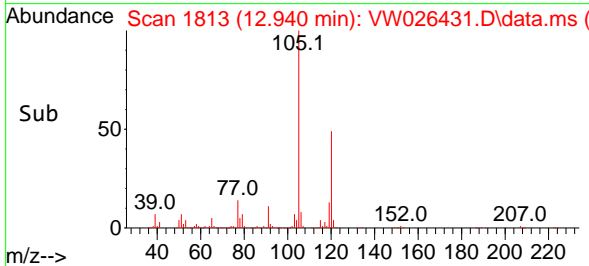
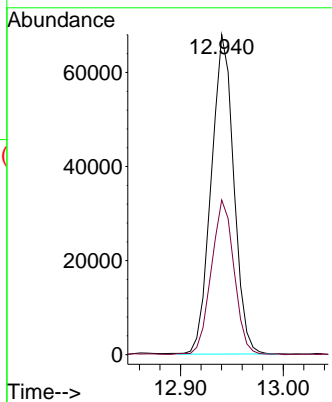
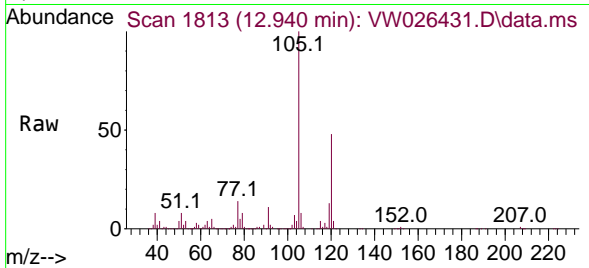




#62  
 1,3,5-Trimethylbenzene  
 Concen: 2.287 ug/L  
 RT: 12.940 min Scan# 1813  
 Delta R.T. 0.000 min  
 Lab File: VW026431.D  
 Acq: 29 Jun 2023 11:58

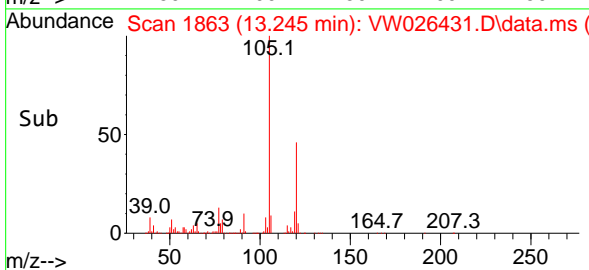
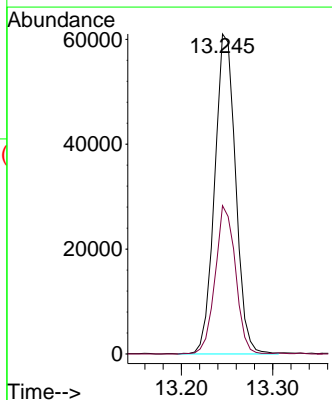
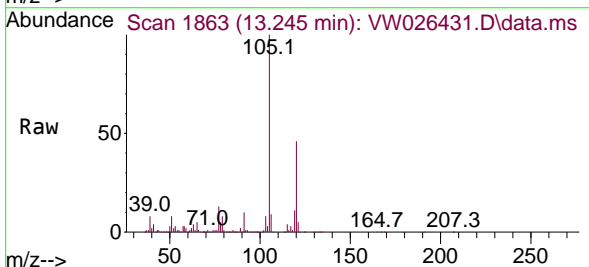
Instrument :  
 MSVOA\_W  
 ClientSampleId :  
 VSTD2.5471

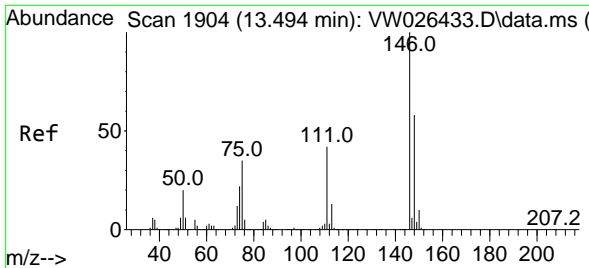
Tgt Ion:105 Resp: 103308  
 Ion Ratio Lower Upper  
 105 100  
 120 48.8 39.2 58.8



#63  
 1,2,4-Trimethylbenzene  
 Concen: 2.202 ug/L  
 RT: 13.245 min Scan# 1863  
 Delta R.T. 0.000 min  
 Lab File: VW026431.D  
 Acq: 29 Jun 2023 11:58

Tgt Ion:105 Resp: 97166  
 Ion Ratio Lower Upper  
 105 100  
 120 45.0 36.0 54.0

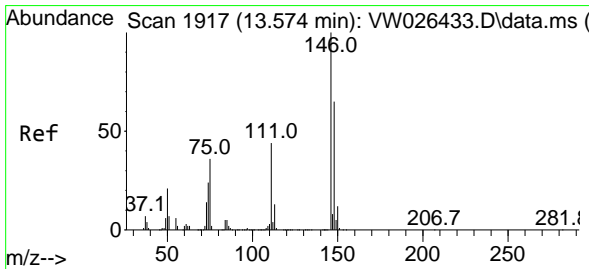
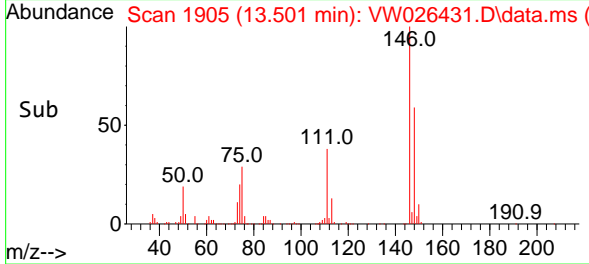
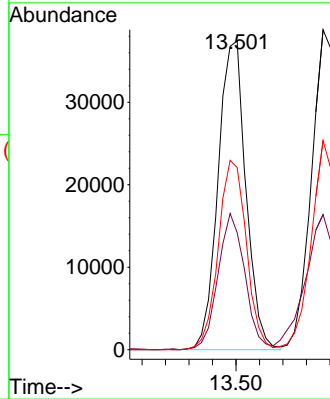
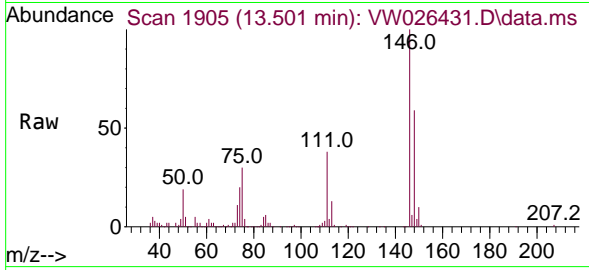




#64  
 1,3-Dichlorobenzene  
 Concen: 2.587 ug/L  
 RT: 13.501 min Scan# 1905  
 Delta R.T. 0.007 min  
 Lab File: VW026431.D  
 Acq: 29 Jun 2023 11:58

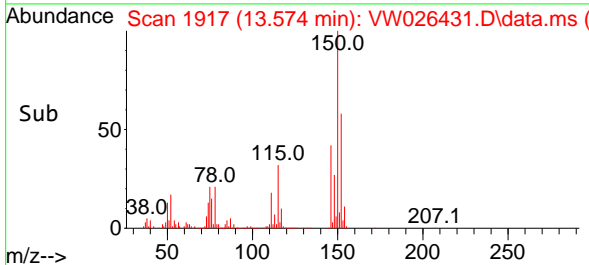
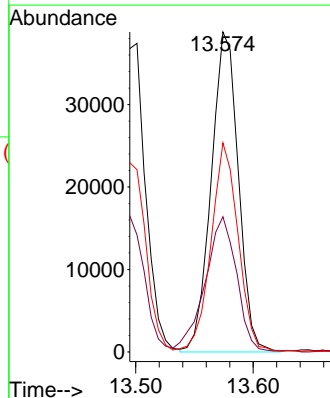
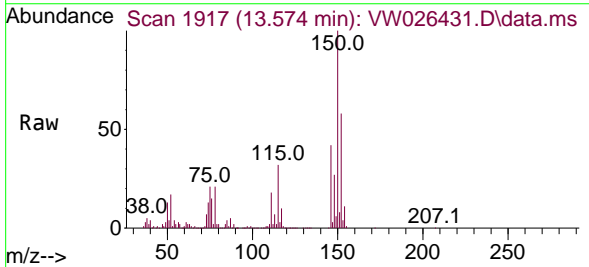
Instrument :  
 MSVOA\_W  
 ClientSampleId :  
 VSTD2.5471

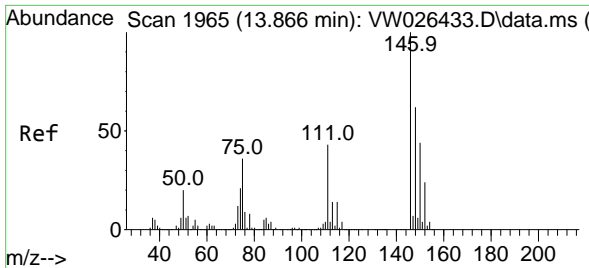
Tgt Ion:146 Resp: 61653  
 Ion Ratio Lower Upper  
 146 100  
 111 37.9 29.5 54.9  
 148 59.1 40.8 75.8



#65  
 1,4-Dichlorobenzene  
 Concen: 2.630 ug/L  
 RT: 13.574 min Scan# 1917  
 Delta R.T. 0.000 min  
 Lab File: VW026431.D  
 Acq: 29 Jun 2023 11:58

Tgt Ion:146 Resp: 62354  
 Ion Ratio Lower Upper  
 146 100  
 111 42.3 30.7 56.9  
 148 65.3 45.6 84.8



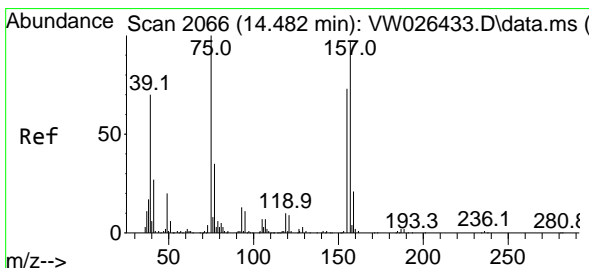
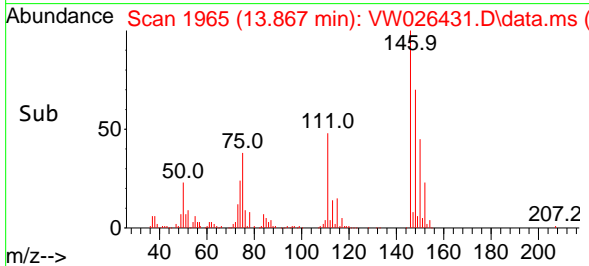
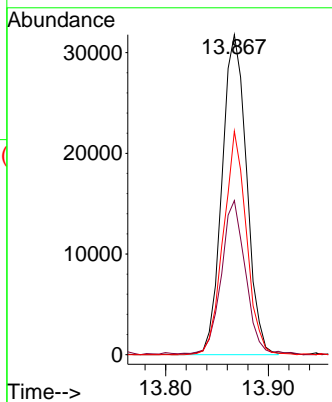
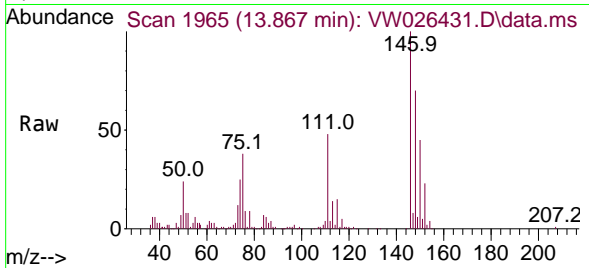


#67  
 1,2-Dichlorobenzene  
 Concen: 2.446 ug/L  
 RT: 13.867 min Scan# 1965  
 Delta R.T. 0.000 min  
 Lab File: VW026431.D  
 Acq: 29 Jun 2023 11:58

Instrument : MSVOA\_W  
 ClientSampleId : VSTD2.5471

Tgt Ion:146 Resp: 52762

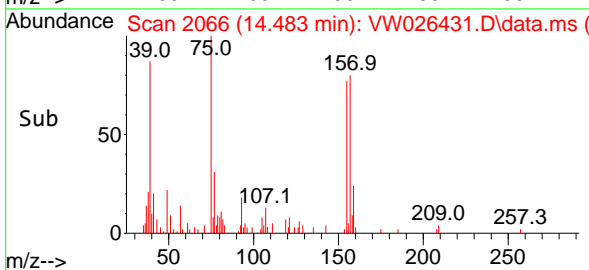
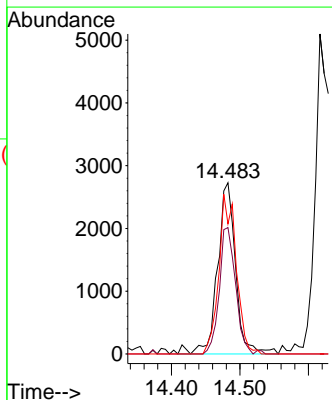
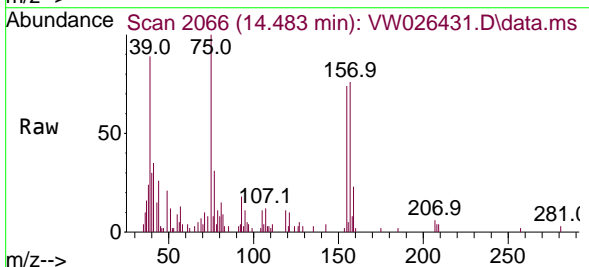
Ion	Ratio	Lower	Upper
146	100		
111	48.1	34.7	52.1
148	69.8	49.6	74.4

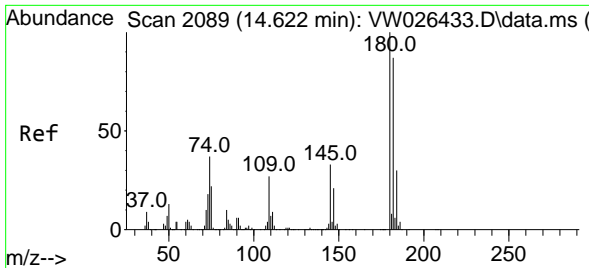


#68  
 1,2-Dibromo-3-chloropropane  
 Concen: 2.581 ug/L  
 RT: 14.483 min Scan# 2066  
 Delta R.T. 0.000 min  
 Lab File: VW026431.D  
 Acq: 29 Jun 2023 11:58

Tgt Ion: 75 Resp: 5013

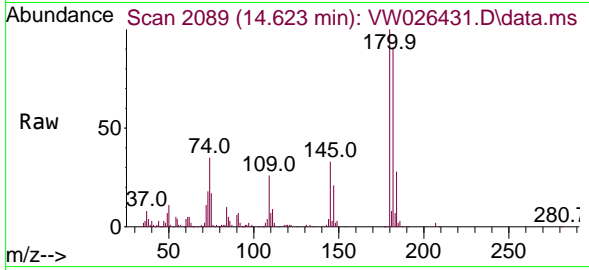
Ion	Ratio	Lower	Upper
75	100		
155	73.8	58.5	87.7
157	75.9	77.4	116.2



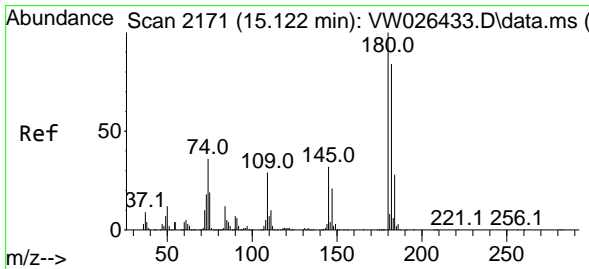
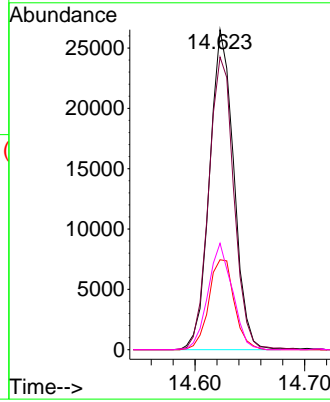
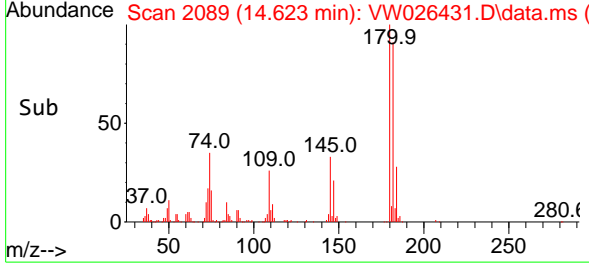


#69  
 1,3,5-Trichlorobenzene  
 Concen: 2.512 ug/L  
 RT: 14.623 min Scan# 2089  
 Delta R.T. 0.000 min  
 Lab File: VW026431.D  
 Acq: 29 Jun 2023 11:58

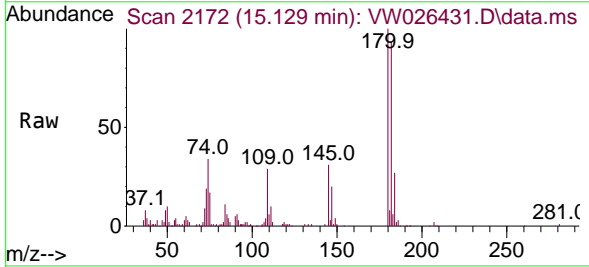
Instrument : MSVOA\_W  
 ClientSampleId : VSTD2.5471



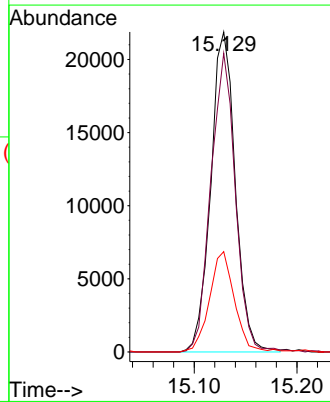
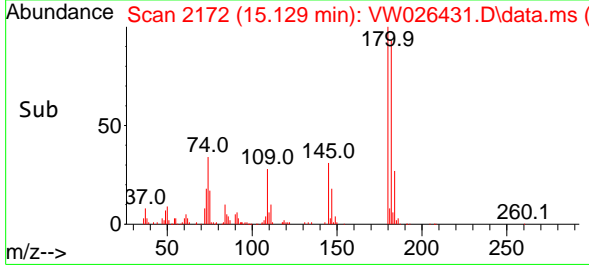
Tgt Ion:180 Resp: 40751  
 Ion Ratio Lower Upper  
 180 100  
 182 94.8 74.5 111.7  
 184 29.6 23.8 35.6  
 145 33.4 24.8 37.2

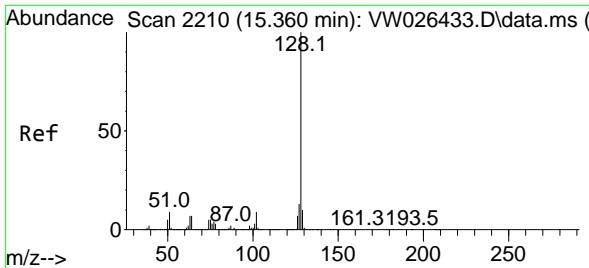


#70  
 1,2,4-trichlorobenzene  
 Concen: 2.583 ug/L  
 RT: 15.129 min Scan# 2172  
 Delta R.T. 0.007 min  
 Lab File: VW026431.D  
 Acq: 29 Jun 2023 11:58



Tgt Ion:180 Resp: 36274  
 Ion Ratio Lower Upper  
 180 100  
 182 92.6 75.5 113.3  
 145 31.8 26.2 39.2

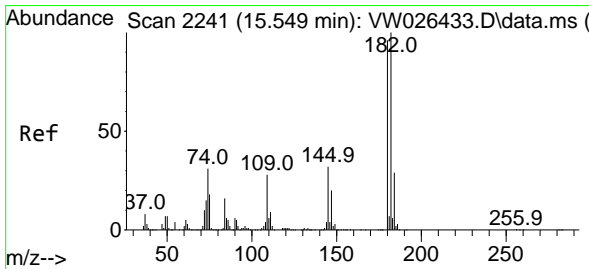
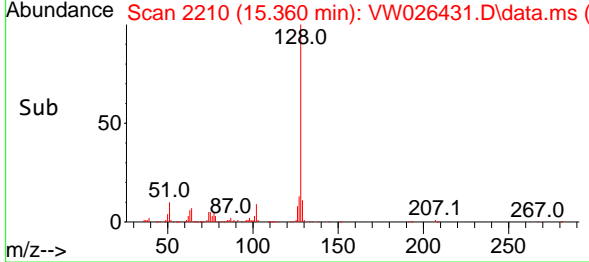
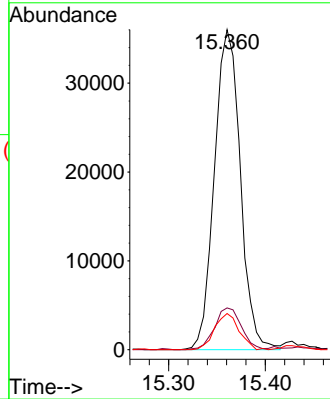
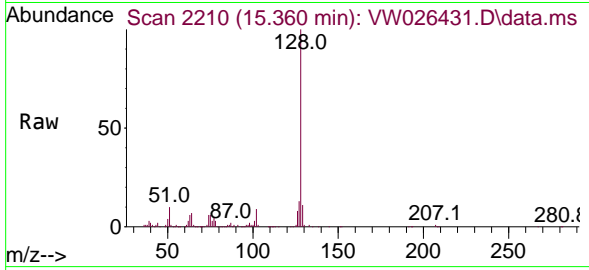




#71  
 Naphthalene  
 Concen: 2.342 ug/L  
 RT: 15.360 min Scan# 211  
 Delta R.T. 0.000 min  
 Lab File: VW026431.D  
 Acq: 29 Jun 2023 11:58

Instrument :  
 MSVOA\_W  
 ClientSampleId :  
 VSTD2.5471

Tgt Ion	Resp	Lower	Upper
128	100		
127	13.5	10.4	15.6
129	10.6	8.3	12.5



#72  
 1,2,3-Trichlorobenzene  
 Concen: 2.597 ug/L  
 RT: 15.556 min Scan# 2242  
 Delta R.T. 0.007 min  
 Lab File: VW026431.D  
 Acq: 29 Jun 2023 11:58

Tgt Ion	Resp	Lower	Upper
180	100		
182	96.7	75.7	113.5
145	34.8	27.0	40.6

