

Data Path : Z:\voasrv\HPCHEM1\MSVOA\_W\Data\VW070125\  
 Data File : VW031740.D  
 Acq On : 01 Jul 2025 10:58  
 Operator : SY/MD  
 Sample : VW0701SBL02  
 Misc : 5.00g/5mL/MSVOA\_W/SOIL  
 ALS Vial : 4 Sample Multiplier: 1

Instrument :  
 MSVOA\_W  
 ClientSampleId :  
 VW0701SBL02

Quant Time: Jul 02 03:52:56 2025  
 Quant Method : Z:\voasrv\HPCHEM1\MSVOA\_W\Method\82W063025S.M  
 Quant Title : SW846 8260  
 QLast Update : Wed Jul 02 03:49:43 2025  
 Response via : Initial Calibration

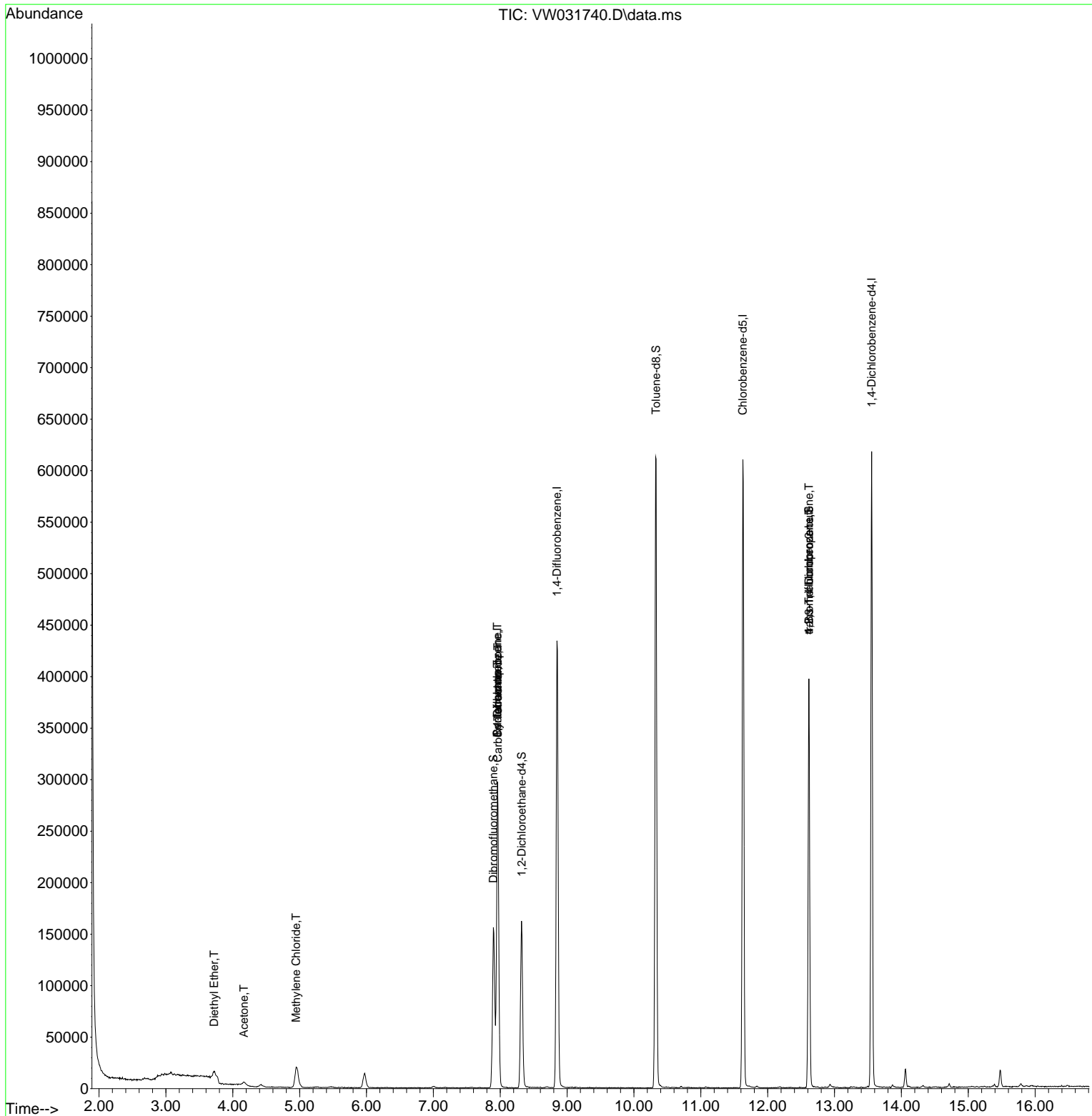
Compound	R.T.	QIon	Response	Conc	Units	Dev(Min)
-----						
Internal Standards						
1) Pentafluorobenzene	7.959	168	199201	50.000	ug/l	0.00
34) 1,4-Difluorobenzene	8.849	114	366063	50.000	ug/l	0.00
63) Chlorobenzene-d5	11.629	117	332690	50.000	ug/l	0.00
72) 1,4-Dichlorobenzene-d4	13.556	152	150101	50.000	ug/l	0.00
System Monitoring Compounds						
33) 1,2-Dichloroethane-d4	8.319	65	133796	46.802	ug/l	0.00
Spiked Amount	50.000	Range	63 - 155	Recovery	=	93.600%
35) Dibromofluoromethane	7.898	113	112660	47.163	ug/l	0.00
Spiked Amount	50.000	Range	70 - 134	Recovery	=	94.320%
50) Toluene-d8	10.331	98	406941	45.778	ug/l	0.00
Spiked Amount	50.000	Range	74 - 123	Recovery	=	91.560%
62) 4-Bromofluorobenzene	12.617	95	135823	41.520	ug/l	0.00
Spiked Amount	50.000	Range	17 - 146	Recovery	=	83.040%
Target Compounds						
						Qvalue
8) Diethyl Ether	3.722	74	3033	2.044	ug/l	90
16) Acetone	4.167	43	4801	6.795	ug/l	89
20) Methylene Chloride	4.948	84	17857	2.129	ug/l	97
31) Cyclohexane	7.959	56	5244	1.288	ug/l #	15
36) 1,1-Dichloropropene	7.959	75	18159	5.253	ug/l #	50
38) Carbon Tetrachloride	7.965	117	22541	6.399	ug/l #	18
76) 1,2,3-Trichloropropane	12.617	75	72435	37.343	ug/l #	1
81) trans-1,4-Dichloro-2-b...	12.617	75	72435	86.978	ug/l #	8
-----						

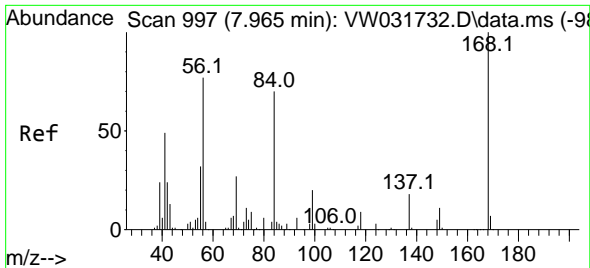
(#) = qualifier out of range (m) = manual integration (+) = signals summed

Data Path : Z:\voasrv\HPCHEM1\MSVOA\_W\Data\VW070125\  
 Data File : VW031740.D  
 Acq On : 01 Jul 2025 10:58  
 Operator : SY/MD  
 Sample : VW0701SBL02  
 Misc : 5.00g/5mL/MSVOA\_W/SOIL  
 ALS Vial : 4 Sample Multiplier: 1

Instrument :  
 MSVOA\_W  
 ClientSampleId :  
 VW0701SBL02

Quant Time: Jul 02 03:52:56 2025  
 Quant Method : Z:\voasrv\HPCHEM1\MSVOA\_W\Method\82W063025S.M  
 Quant Title : SW846 8260  
 QLast Update : Wed Jul 02 03:49:43 2025  
 Response via : Initial Calibration

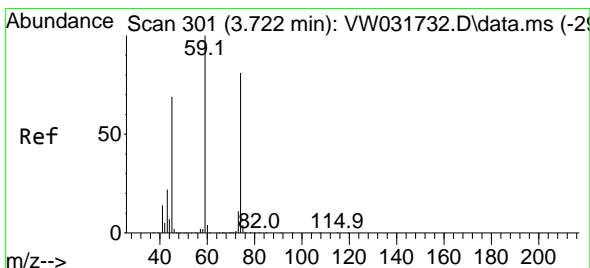
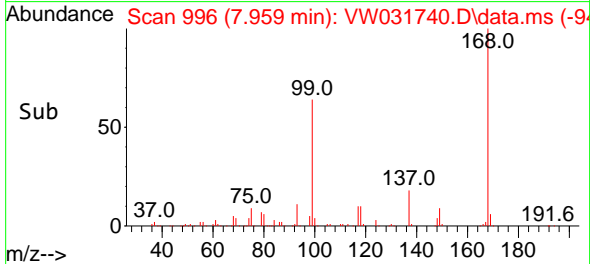
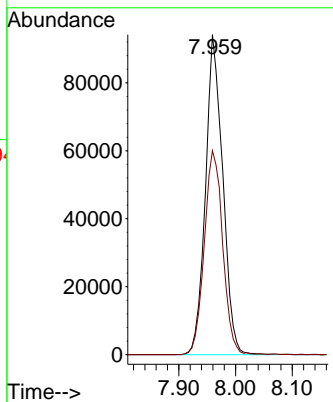
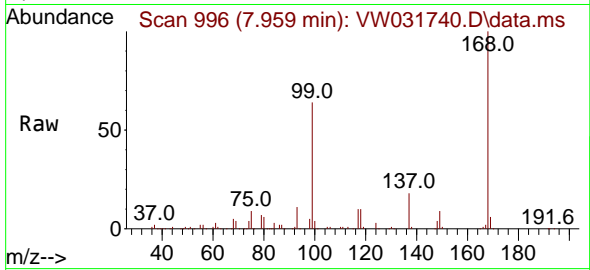




#1  
 Pentafluorobenzene  
 Concen: 50.000 ug/l  
 RT: 7.959 min Scan# 996  
 Delta R.T. -0.006 min  
 Lab File: VW031740.D  
 Acq: 01 Jul 2025 10:58

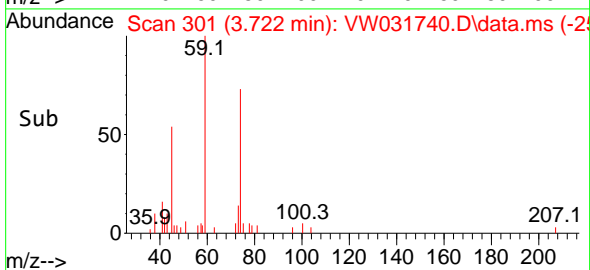
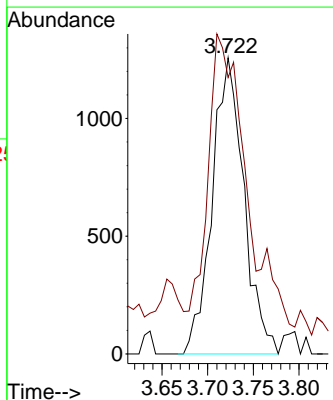
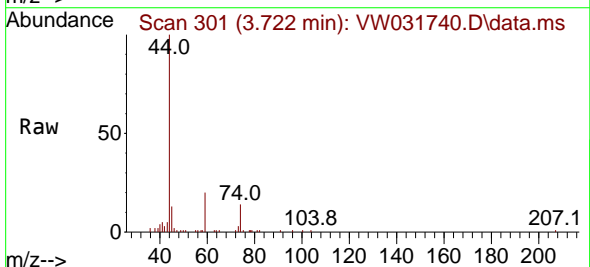
Instrument : MSVOA\_W  
 Client Sample Id : VW0701SBL02

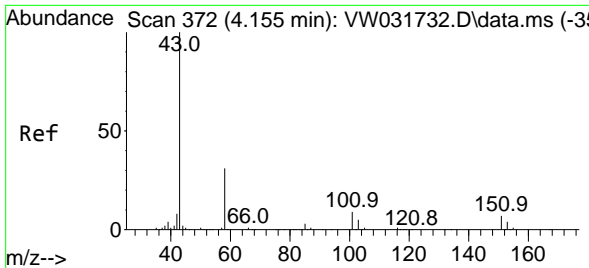
Tgt Ion: 168 Resp: 199201  
 Ion Ratio Lower Upper  
 168 100  
 99 63.7 49.4 74.2



#8  
 Diethyl Ether  
 Concen: 2.044 ug/l  
 RT: 3.722 min Scan# 301  
 Delta R.T. 0.000 min  
 Lab File: VW031740.D  
 Acq: 01 Jul 2025 10:58

Tgt Ion: 74 Resp: 3033  
 Ion Ratio Lower Upper  
 74 100  
 45 96.9 43.9 131.7

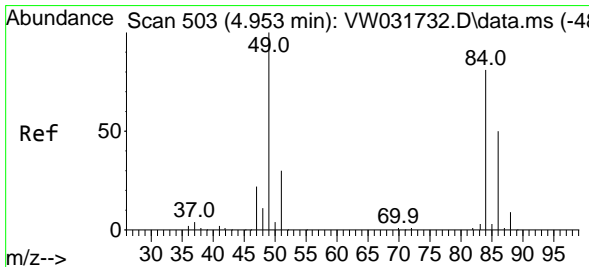
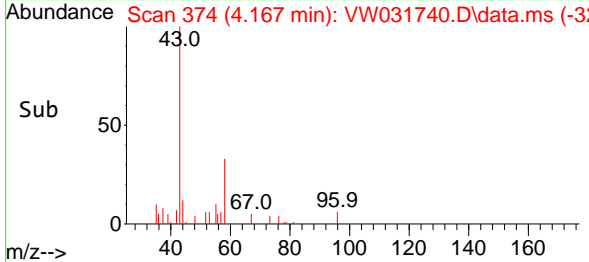
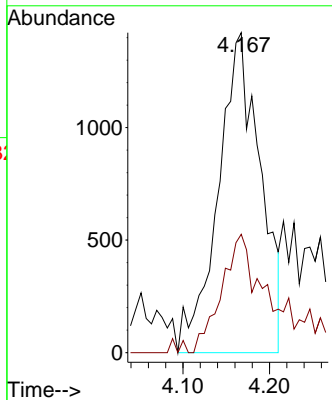
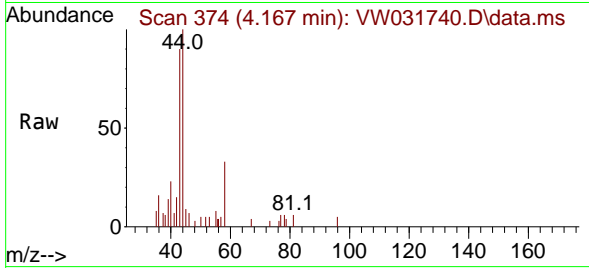




#16  
 Acetone  
 Concen: 6.795 ug/l  
 RT: 4.167 min Scan# 31  
 Delta R.T. 0.013 min  
 Lab File: VW031740.D  
 Acq: 01 Jul 2025 10:58

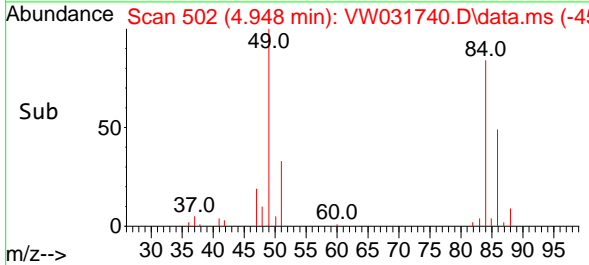
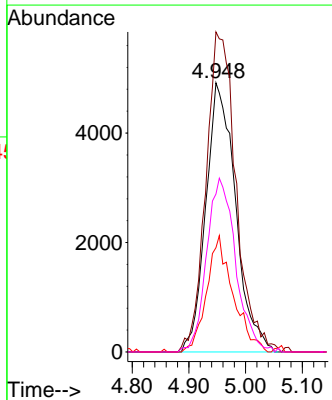
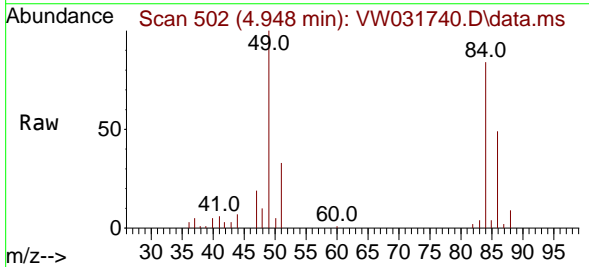
Instrument : MSVOA\_W  
 ClientSampleId : VW0701SBL02

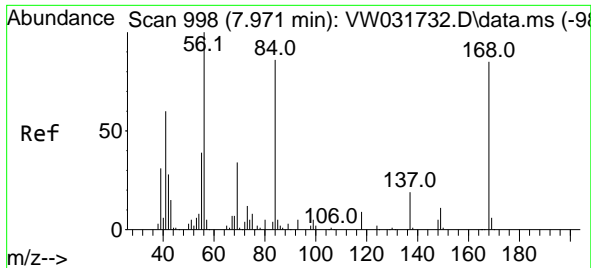
Tgt Ion: 43 Resp: 4801  
 Ion Ratio Lower Upper  
 43 100  
 58 37.0 24.8 37.2



#20  
 Methylene Chloride  
 Concen: 2.129 ug/l  
 RT: 4.948 min Scan# 502  
 Delta R.T. -0.005 min  
 Lab File: VW031740.D  
 Acq: 01 Jul 2025 10:58

Tgt Ion: 84 Resp: 17857  
 Ion Ratio Lower Upper  
 84 100  
 49 118.9 98.2 147.4  
 51 38.8 29.8 44.8  
 86 58.7 49.5 74.3



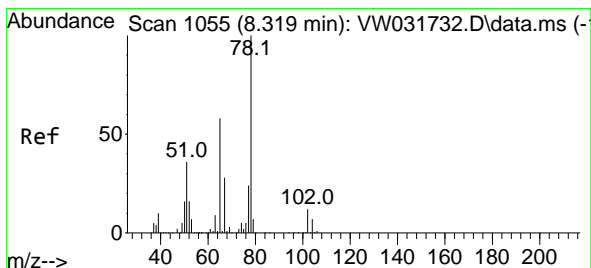
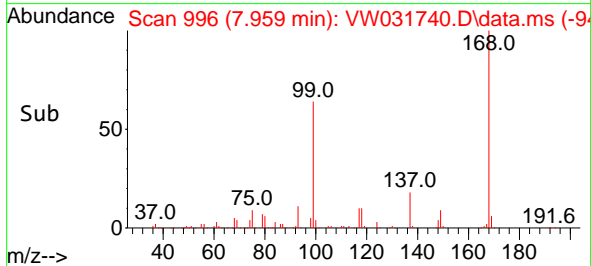
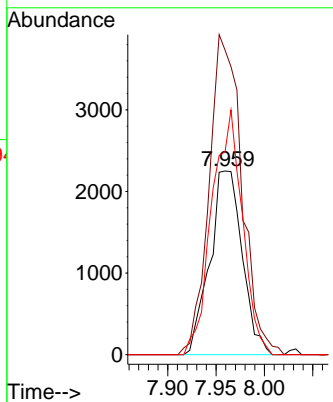
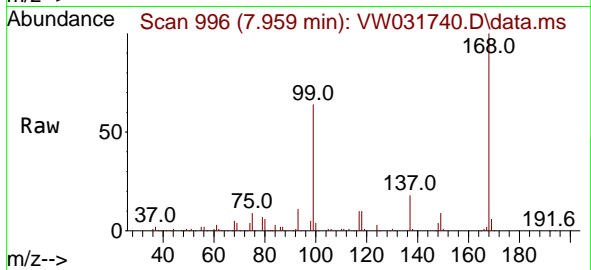


#31  
 Cyclohexane  
 Concen: 1.288 ug/l  
 RT: 7.959 min Scan# 996  
 Delta R.T. -0.012 min  
 Lab File: VW031740.D  
 Acq: 01 Jul 2025 10:58

Instrument : MSVOA\_W  
 ClientSampleId : VW0701SBL02

Tgt Ion: 56 Resp: 5244

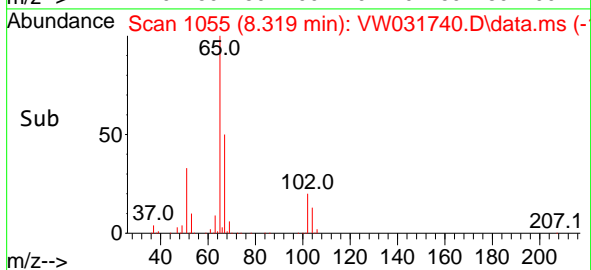
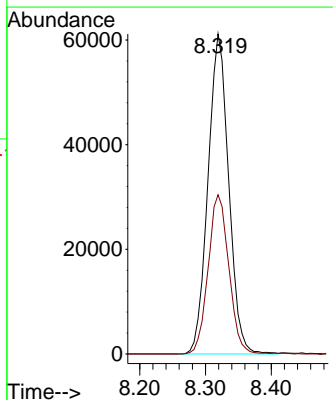
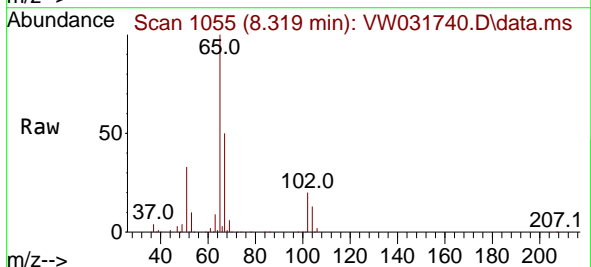
Ion	Ratio	Lower	Upper
56	100		
69	165.8	27.2	40.8#
84	110.7	68.5	102.7#

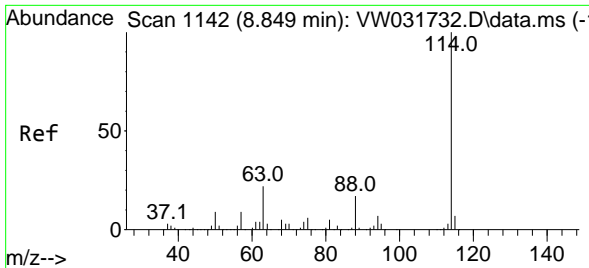


#33  
 1,2-Dichloroethane-d4  
 Concen: 46.802 ug/l  
 RT: 8.319 min Scan# 1055  
 Delta R.T. 0.000 min  
 Lab File: VW031740.D  
 Acq: 01 Jul 2025 10:58

Tgt Ion: 65 Resp: 133796

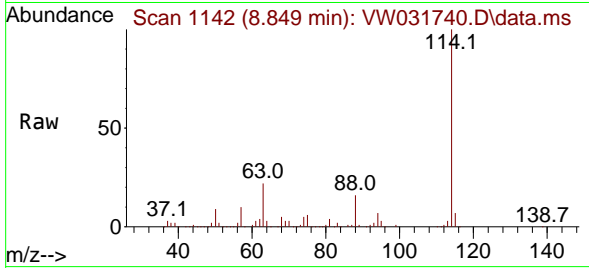
Ion	Ratio	Lower	Upper
65	100		
67	49.8	0.0	99.4



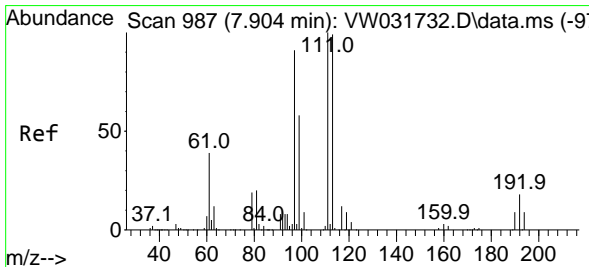
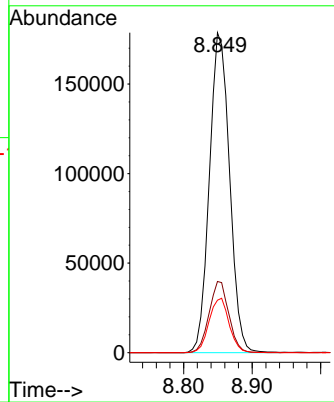
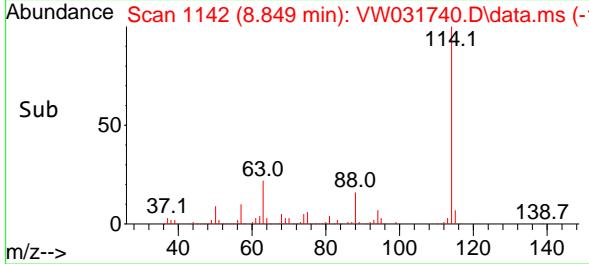


#34  
 1,4-Difluorobenzene  
 Concen: 50.000 ug/l  
 RT: 8.849 min Scan# 1142  
 Delta R.T. 0.000 min  
 Lab File: VW031740.D  
 Acq: 01 Jul 2025 10:58

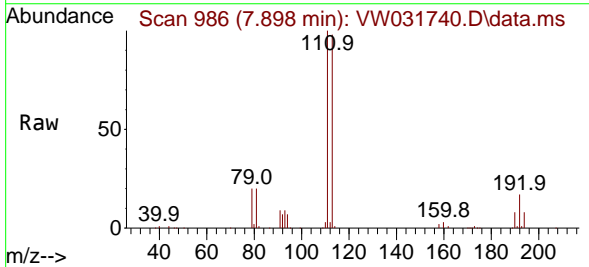
Instrument : MSVOA\_W  
 ClientSampleId : VW0701SBL02



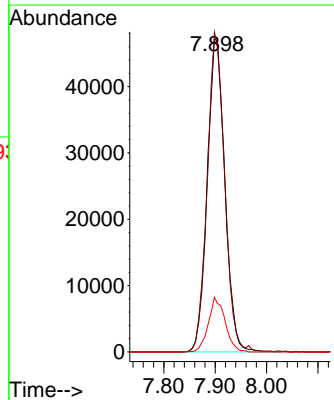
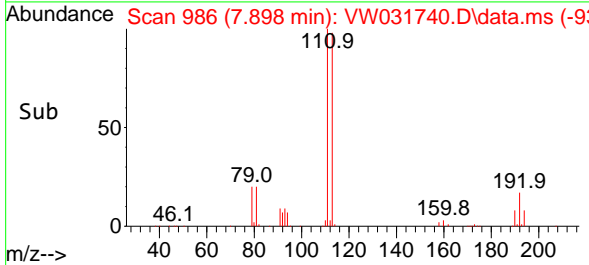
Tgt Ion:114 Resp: 366063  
 Ion Ratio Lower Upper  
 114 100  
 63 22.3 0.0 43.6  
 88 16.4 0.0 34.2

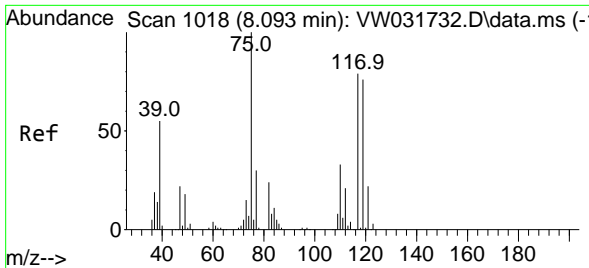


#35  
 Dibromofluoromethane  
 Concen: 47.163 ug/l  
 RT: 7.898 min Scan# 986  
 Delta R.T. -0.006 min  
 Lab File: VW031740.D  
 Acq: 01 Jul 2025 10:58



Tgt Ion:113 Resp: 112660  
 Ion Ratio Lower Upper  
 113 100  
 111 100.6 82.1 123.1  
 192 16.6 13.8 20.6

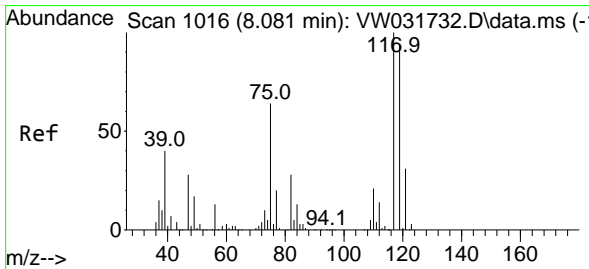
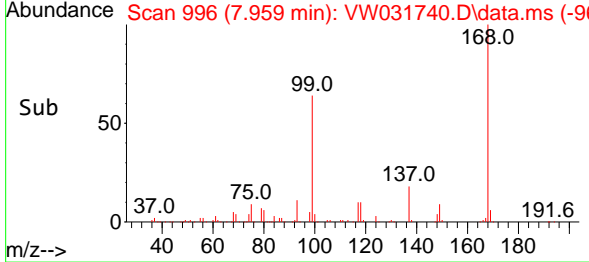
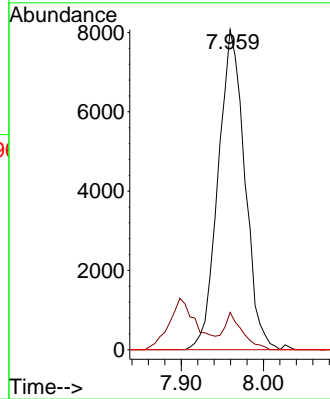
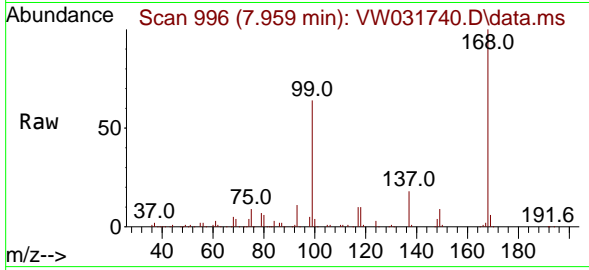




#36  
 1,1-Dichloropropene  
 Concen: 5.253 ug/l  
 RT: 7.959 min Scan# 996  
 Delta R.T. -0.134 min  
 Lab File: VW031740.D  
 Acq: 01 Jul 2025 10:58

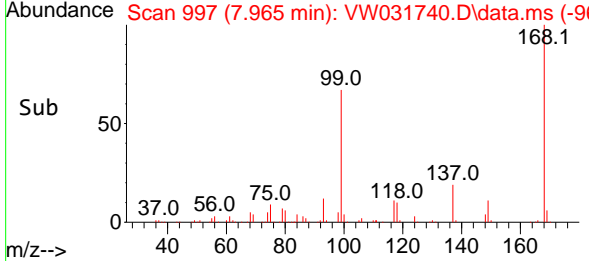
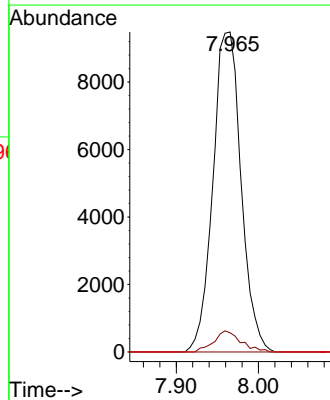
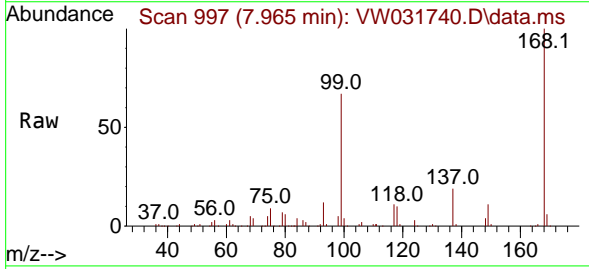
Instrument : MSVOA\_W  
 ClientSampleId : VW0701SBL02

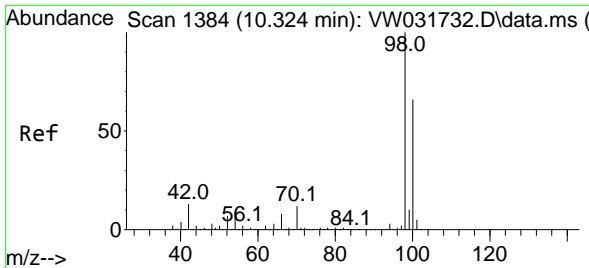
Tgt Ion	Resp	Lower	Upper
75	18159		
75	100		
110	8.2	16.8	50.4#
77	0.0	25.0	37.6#



#38  
 Carbon Tetrachloride  
 Concen: 6.399 ug/l  
 RT: 7.965 min Scan# 997  
 Delta R.T. -0.115 min  
 Lab File: VW031740.D  
 Acq: 01 Jul 2025 10:58

Tgt Ion	Resp	Lower	Upper
117	22541		
117	100		
119	6.0	75.0	112.6#
121	0.0	24.6	37.0#

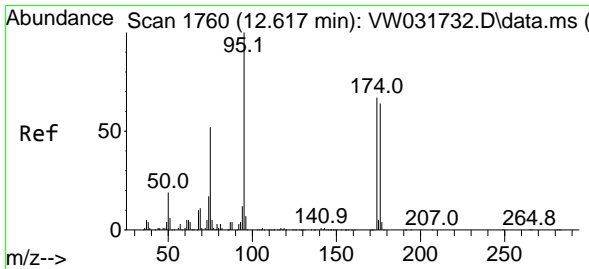
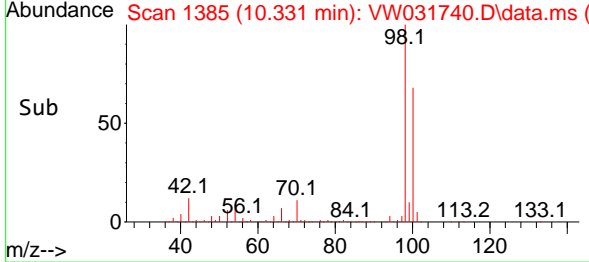
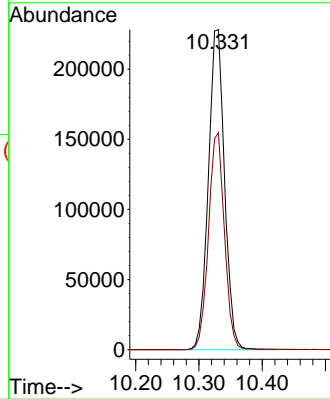
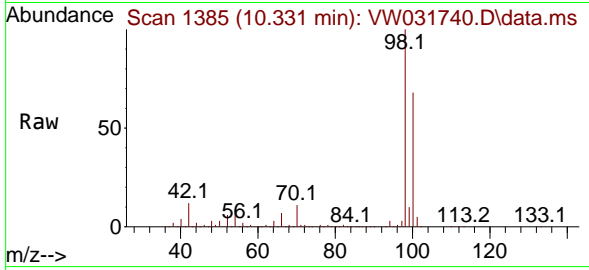




#50  
 Toluene-d8  
 Concen: 45.778 ug/l  
 RT: 10.331 min Scan# 11  
 Delta R.T. 0.006 min  
 Lab File: VW031740.D  
 Acq: 01 Jul 2025 10:58

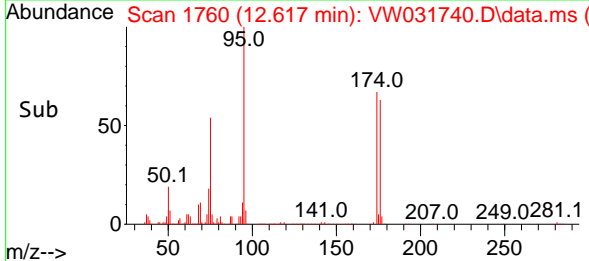
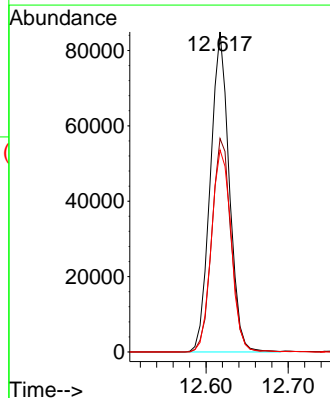
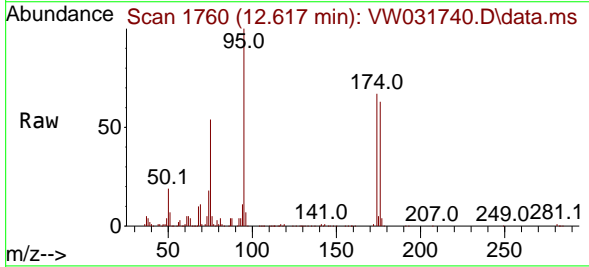
Instrument :  
 MSVOA\_W  
 ClientSampleId :  
 VW0701SBL02

Tgt Ion: 98 Resp: 406941  
 Ion Ratio Lower Upper  
 98 100  
 100 66.6 53.0 79.4

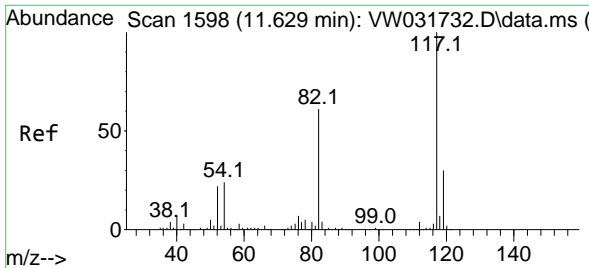


#62  
 4-Bromofluorobenzene  
 Concen: 41.520 ug/l  
 RT: 12.617 min Scan# 1760  
 Delta R.T. 0.000 min  
 Lab File: VW031740.D  
 Acq: 01 Jul 2025 10:58

Tgt Ion: 95 Resp: 135823  
 Ion Ratio Lower Upper  
 95 100  
 174 67.8 0.0 133.8  
 176 66.0 0.0 126.0





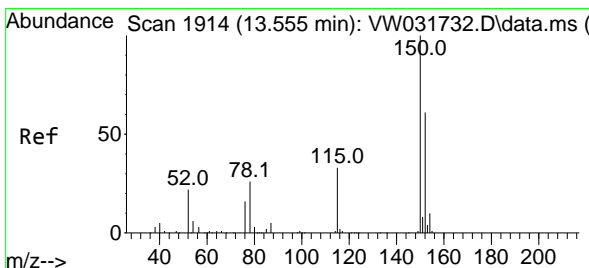
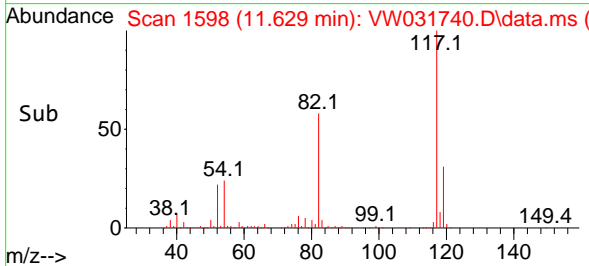
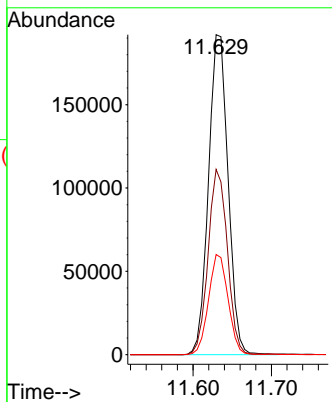
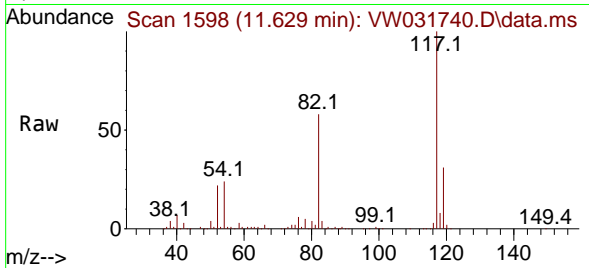


#63  
 Chlorobenzene-d5  
 Concen: 50.000 ug/l  
 RT: 11.629 min Scan# 117  
 Delta R.T. 0.000 min  
 Lab File: VW031740.D  
 Acq: 01 Jul 2025 10:58

Instrument : MSVOA\_W  
 ClientSampleId : VW0701SBL02

Tgt Ion:117 Resp: 332690

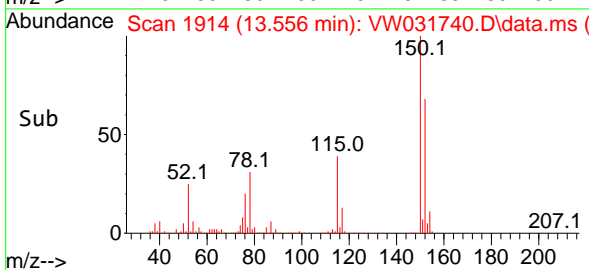
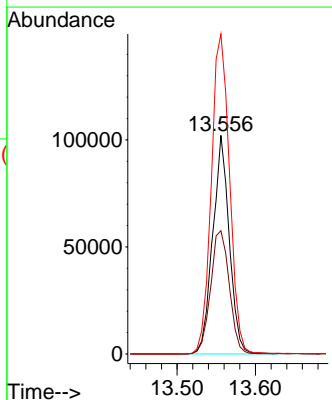
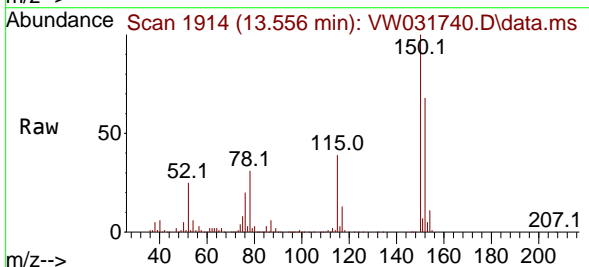
Ion	Ratio	Lower	Upper
117	100		
82	57.9	48.6	72.8
119	31.3	23.9	35.9

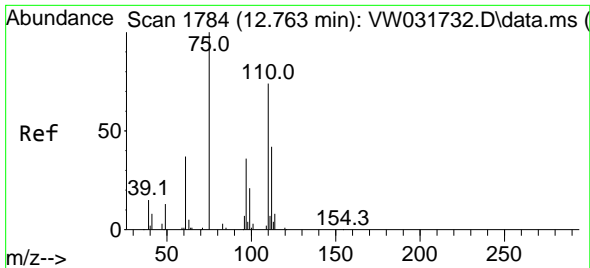


#72  
 1,4-Dichlorobenzene-d4  
 Concen: 50.000 ug/l  
 RT: 13.556 min Scan# 1914  
 Delta R.T. 0.000 min  
 Lab File: VW031740.D  
 Acq: 01 Jul 2025 10:58

Tgt Ion:152 Resp: 150101

Ion	Ratio	Lower	Upper
152	100		
115	63.7	31.9	95.7
150	161.4	0.0	356.4

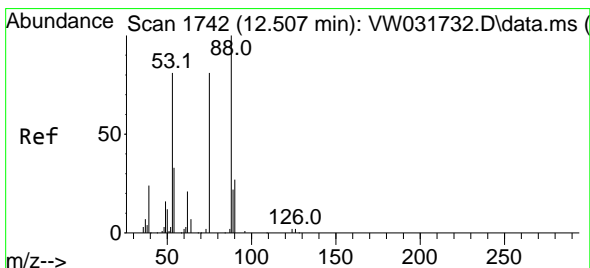
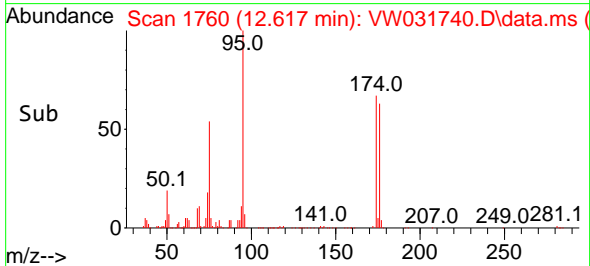
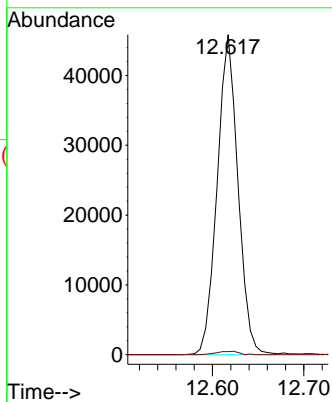
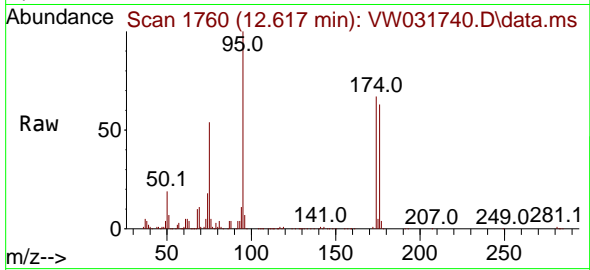




#76  
 1,2,3-Trichloropropane  
 Concen: 37.343 ug/l  
 RT: 12.617 min Scan# 1760  
 Delta R.T. -0.146 min  
 Lab File: VW031740.D  
 Acq: 01 Jul 2025 10:58

Instrument : MSVOA\_W  
 ClientSampleId : VW0701SBL02

Tgt Ion: 75 Resp: 72435  
 Ion Ratio Lower Upper  
 75 100  
 77 1.1 141.2 423.6#



#81  
 trans-1,4-Dichloro-2-butene  
 Concen: 86.978 ug/l  
 RT: 12.617 min Scan# 1760  
 Delta R.T. 0.110 min  
 Lab File: VW031740.D  
 Acq: 01 Jul 2025 10:58

Tgt Ion: 75 Resp: 72435  
 Ion Ratio Lower Upper  
 75 100  
 53 0.2 83.5 125.3#  
 89 0.0 38.3 57.5#

