

Data Path : Z:\VOASRV\HPCHEM1\MSVOA W\DATA\VW070219\  
 Data File : VW011112.D  
 Acq On : 02 Jul 2019 16:56  
 Operator : SY/VA  
 Sample : K3599-07  
 Misc : 5.02G/10ML/MSVOA W/SOIL  
 ALS Vial : 1 Sample Multiplier: 1

Instrument :  
 MSVOA\_W  
 ClientSampled :  
 GAM16

## Integration Parameters: LSCINT.P

Integrator: RTE  
 Smoothing : OFF  
 Sampling : 1  
 Start Thrs: 0.2  
 Stop Thrs : 0

Filtering: 5  
 Min Area: 0 % of largest Peak  
 Max Peaks: 100  
 Peak Location: TOP

If leading or trailing edge < 100 prefer < Baseline drop else tangent >  
 Peak separation: 5

Method : Z:\VOASRV\HPCHEM1\MSVOA\_W\METHOD\SOM2WLM070219S.M  
 Title : VOC Analysis

Signal : TIC

peak #	R.T. min	first scan	max scan	last scan	PK TY	peak height	corr. area	corr. % max.	% of total
1	2.160	37	42	47	rBV3	6775	13504	1.22%	0.162%
2	2.343	66	72	85	rBV	71043	134016	12.08%	1.606%
3	2.879	154	160	183	rVB	44459	113892	10.26%	1.365%
4	3.721	295	298	303	rVB4	716	1100	0.10%	0.013%
5	3.861	313	321	324	rBV5	1373	3458	0.31%	0.041%
6	4.019	336	347	359	rBV	111221	367900	33.15%	4.408%
7	4.245	381	384	386	rBV3	537	545	0.05%	0.007%
8	4.306	392	394	398	rBV4	454	457	0.04%	0.005%
9	4.397	400	409	418	rBV3	3373	11020	0.99%	0.132%
10	4.525	428	430	434	rVB3	398	544	0.05%	0.007%
11	4.666	452	453	456	rBV2	499	440	0.04%	0.005%
12	4.916	482	494	505	rBV3	7828	31469	2.84%	0.377%
13	5.111	524	526	529	rVV3	598	829	0.07%	0.010%
14	5.233	545	546	551	rVB3	520	464	0.04%	0.006%
15	5.470	581	585	589	rVB3	354	548	0.05%	0.007%
16	5.605	603	607	609	rVB2	708	550	0.05%	0.007%
17	5.720	622	626	628	rVB3	349	466	0.04%	0.006%
18	5.861	647	649	653	rVB2	458	460	0.04%	0.006%
19	5.934	653	661	671	rBV6	3249	10585	0.95%	0.127%
20	6.306	719	722	726	rVB3	365	466	0.04%	0.006%
21	6.434	739	743	747	rBV3	341	553	0.05%	0.007%
22	6.507	752	755	758	rVB2	325	457	0.04%	0.005%
23	6.574	762	766	769	rBV3	400	490	0.04%	0.006%
24	6.848	808	811	813	rBV2	402	486	0.04%	0.006%
25	6.897	815	819	820	rBV2	408	447	0.04%	0.005%
26	7.074	837	848	853	rBV	45505	126733	11.42%	1.518%
27	7.141	854	859	874	rVB	59111	157623	14.20%	1.888%
28	7.525	920	922	927	rVB4	439	724	0.07%	0.009%
29	7.647	930	942	952	rBV	176137	444383	40.05%	5.324%
30	7.793	962	966	968	rVB2	358	466	0.04%	0.006%
31	7.952	986	992	997	rVV6	1005	2276	0.21%	0.027%
32	8.275	1034	1045	1060	rBV2	365456	1109703	100.00%	13.295%
33	8.549	1088	1090	1097	rVB2	762	825	0.07%	0.010%
34	8.689	1107	1113	1116	rBV4	584	1046	0.09%	0.013%

Data Path : Z:\VOASRV\HPCHEM1\MSVOA W\DATA\VW070219\  
 Data File : VW011112.D  
 Acq On : 02 Jul 2019 16:56  
 Operator : SY/VA  
 Sample : K3599-07  
 Misc : 5.02G/10ML/MSVOA W/SOIL  
 ALS Vial : 1 Sample Multiplier: 1

Instrument :  
 MSVOA\_W  
 ClientSampleId :  
 GAM16

## Integration Parameters: LSCINT.P

Integrator: RTE  
 Smoothing : OFF  
 Sampling : 1  
 Start Thrs: 0.2  
 Stop Thrs : 0

Filtering: 5  
 Min Area: 0 % of largest Peak  
 Max Peaks: 100  
 Peak Location: TOP

If leading or trailing edge < 100 prefer < Baseline drop else tangent >  
 Peak separation: 5

Method : Z:\VOASRV\HPCHEM1\MSVOA\_W\METHOD\SOM2WLM070219S.M  
 Title : VOC Analysis

35	8.842	1126	1138	1150	rBV	379248	755189	68.05%	9.048%
36	9.037	1167	1170	1171	rBV2	532	469	0.04%	0.006%
37	9.073	1171	1176	1184	rVB7	2365	5113	0.46%	0.061%
38	9.275	1199	1209	1218	rBV	267550	543571	48.98%	6.513%
39	9.470	1237	1241	1242	rVB2	423	542	0.05%	0.006%
40	9.659	1267	1272	1281	rVB5	2012	4694	0.42%	0.056%
41	10.031	1325	1333	1345	rBV	132939	247240	22.28%	2.962%
42	10.128	1345	1349	1352	rBV4	1106	1528	0.14%	0.018%
43	10.213	1357	1363	1371	rBV5	1408	2921	0.26%	0.035%
44	10.323	1373	1381	1389	rBV	502635	891202	80.31%	10.678%
45	10.494	1406	1409	1411	rBV3	427	578	0.05%	0.007%
46	10.579	1415	1423	1436	rBV	89415	152908	13.78%	1.832%
47	10.701	1438	1443	1452	rVB	7836	14397	1.30%	0.172%
48	10.768	1452	1454	1457	rVB2	432	505	0.05%	0.006%
49	10.860	1463	1469	1473	rBV6	2713	4893	0.44%	0.059%
50	10.927	1473	1480	1488	rBV	156547	272340	24.54%	3.263%
51	11.067	1497	1503	1511	rVB2	8429	15951	1.44%	0.191%
52	11.372	1551	1553	1555	rBV2	435	554	0.05%	0.007%
53	11.439	1560	1564	1568	rVB2	1699	2618	0.24%	0.031%
54	11.506	1572	1575	1577	rBV3	657	894	0.08%	0.011%
55	11.628	1584	1595	1606	rBV	515629	893502	80.52%	10.705%
56	11.731	1607	1612	1618	rVB3	2301	3878	0.35%	0.046%
57	11.811	1621	1625	1626	rBV	471	563	0.05%	0.007%
58	11.841	1626	1630	1636	rVB3	2334	4402	0.40%	0.053%
59	11.920	1641	1643	1647	rBV3	702	844	0.08%	0.010%
60	12.061	1663	1666	1669	rBV3	350	440	0.04%	0.005%
61	12.177	1676	1685	1692	rBV5	2487	5726	0.52%	0.069%
62	12.341	1708	1712	1713	rBV2	753	877	0.08%	0.011%
63	12.469	1728	1733	1739	rVB5	1630	3430	0.31%	0.041%
64	12.548	1742	1746	1749	rVB3	543	862	0.08%	0.010%
65	12.609	1749	1756	1762	rBV	10341	17883	1.61%	0.214%
66	12.695	1762	1770	1779	rVV	205329	341980	30.82%	4.097%
67	12.865	1794	1798	1800	rBV4	598	826	0.07%	0.010%
68	12.932	1804	1809	1818	rVV3	7026	11001	0.99%	0.132%
69	13.115	1837	1839	1843	rVB3	589	820	0.07%	0.010%
70	13.164	1843	1847	1851	rBV5	1207	2346	0.21%	0.028%
71	13.201	1851	1853	1857	rVB4	627	655	0.06%	0.008%

Data Path : Z:\VOASRV\HPCHEM1\MSVOA W\DATA\VW070219\  
 Data File : VW011112.D  
 Acq On : 02 Jul 2019 16:56  
 Operator : SY/VA  
 Sample : K3599-07  
 Misc : 5.02G/10ML/MSVOA W/SOIL  
 ALS Vial : 1 Sample Multiplier: 1

Instrument :  
 MSVOA\_W  
 ClientSampleId :  
 GAM16

## Integration Parameters: LSCINT.P

Integrator: RTE  
 Smoothing : OFF Filtering: 5  
 Sampling : 1 Min Area: 0 % of largest Peak  
 Start Thrs: 0.2 Max Peaks: 100  
 Stop Thrs : 0 Peak Location: TOP

If leading or trailing edge < 100 prefer < Baseline drop else tangent >  
 Peak separation: 5

Method : Z:\VOASRV\HPCHEM1\MSVOA\_W\METHOD\SOM2WLM070219S.M  
 Title : VOC Analysis

72	13.243	1859	1860	1861	rBV	842	477	0.04%	0.006%
73	13.347	1876	1877	1881	rBV4	543	676	0.06%	0.008%
74	13.414	1883	1888	1891	rVV4	1526	2683	0.24%	0.032%
75	13.493	1898	1901	1905	rBV5	1855	2978	0.27%	0.036%
76	13.560	1905	1912	1922	rVV	506883	815511	73.49%	9.771%
77	13.737	1939	1941	1942	rBV2	574	546	0.05%	0.007%
78	13.762	1942	1945	1949	rVV5	1069	2007	0.18%	0.024%
79	13.853	1953	1960	1968	rBV	438641	717540	64.66%	8.597%
80	14.024	1985	1988	1991	rBV4	657	1009	0.09%	0.012%
81	14.073	1991	1996	2003	rVV2	7287	12618	1.14%	0.151%
82	14.201	2014	2017	2022	rBV5	958	1456	0.13%	0.017%
83	14.262	2025	2027	2032	rBV4	477	891	0.08%	0.011%
84	14.335	2034	2039	2046	rVV7	3450	5638	0.51%	0.068%
85	14.603	2080	2083	2084	rBV2	659	750	0.07%	0.009%
86	14.627	2084	2087	2094	rVB3	1864	2769	0.25%	0.033%
87	14.725	2100	2103	2109	rVB5	1073	1533	0.14%	0.018%
88	14.786	2109	2113	2115	rBV5	515	736	0.07%	0.009%
89	14.804	2115	2116	2119	rVB3	602	451	0.04%	0.005%
90	14.908	2132	2133	2136	rBV3	575	489	0.04%	0.006%
91	15.072	2157	2160	2162	rBV3	515	597	0.05%	0.007%
92	15.139	2166	2171	2176	rVB6	1714	3013	0.27%	0.036%
93	15.188	2176	2179	2182	rBV5	530	629	0.06%	0.008%
94	15.249	2185	2189	2190	rBV3	514	597	0.05%	0.007%
95	15.371	2205	2209	2214	rVB	2277	3751	0.34%	0.045%
96	15.438	2214	2220	2226	rBV	8861	14279	1.29%	0.171%
97	15.554	2235	2239	2247	rVB6	1552	3064	0.28%	0.037%
98	15.670	2256	2258	2261	rBV3	727	812	0.07%	0.010%
99	15.780	2272	2276	2279	rBV5	784	1346	0.12%	0.016%
100	16.365	2369	2372	2373	rBV2	627	570	0.05%	0.007%

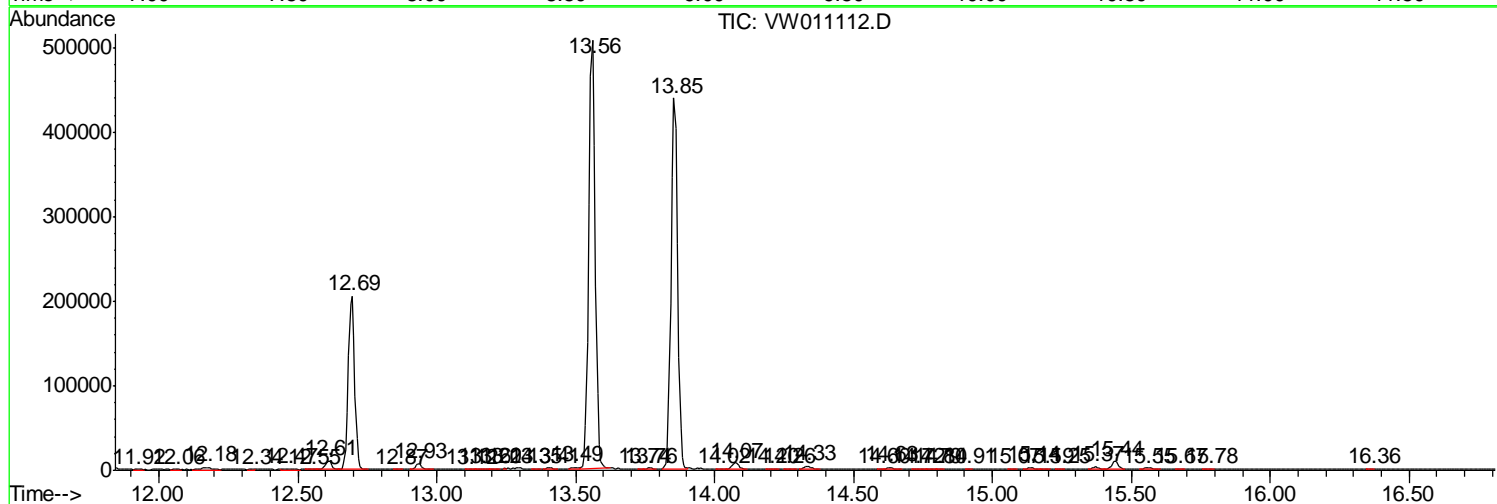
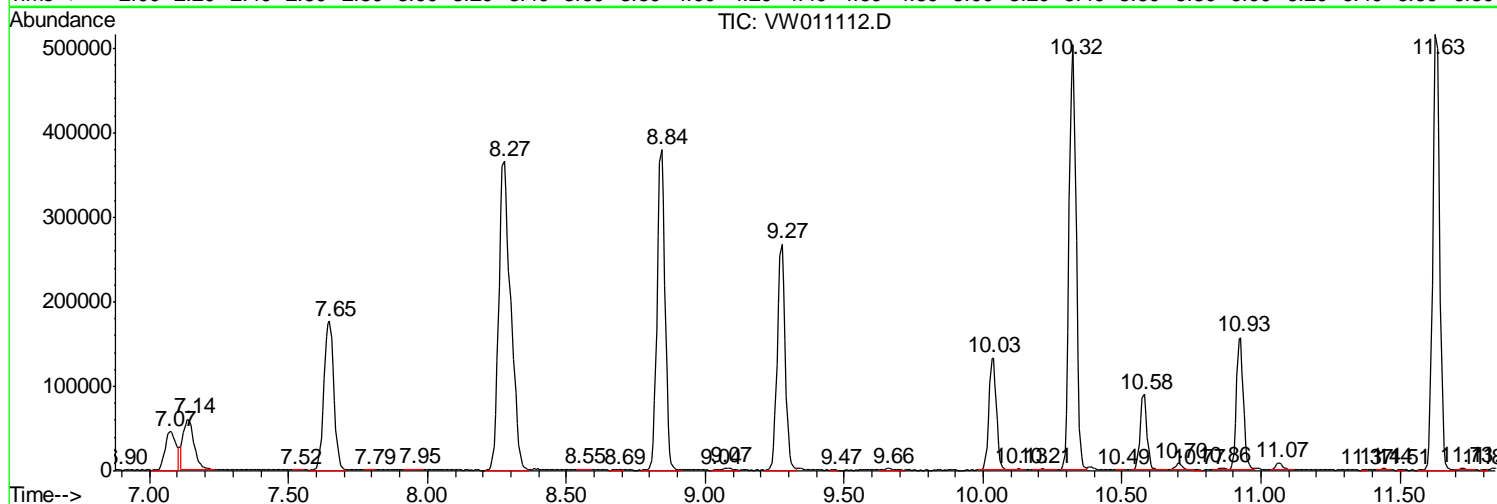
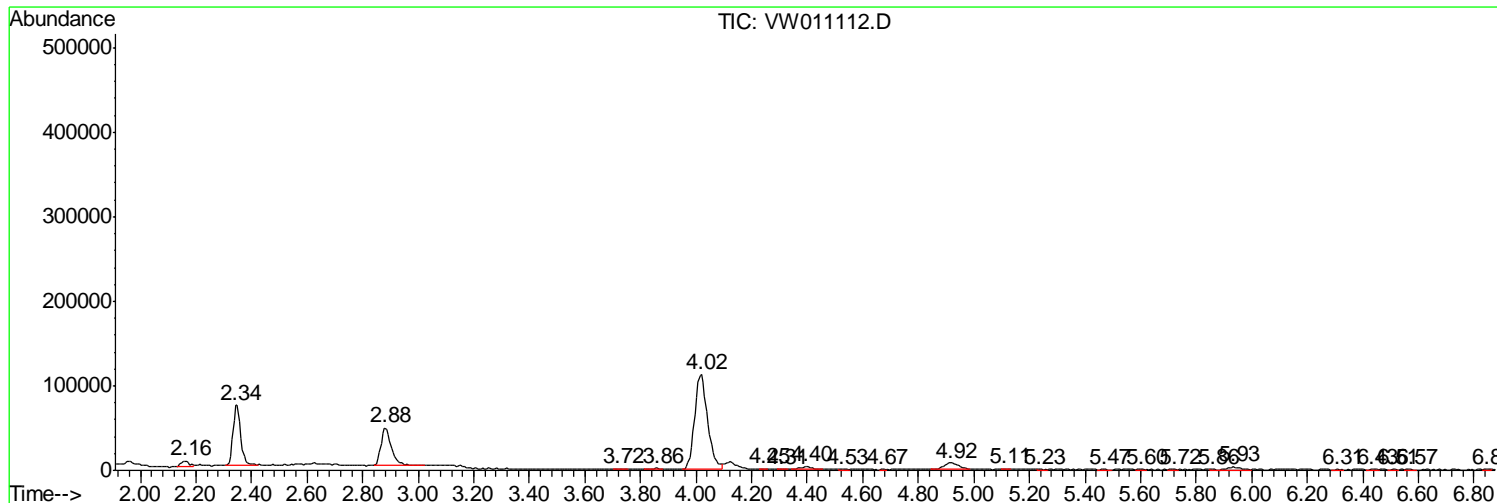
Sum of corrected areas: 8346483

Data Path : Z:\VOASRV\HPCHEM1\MSVOA W\DATA\VW070219\  
 Data File : VW011112.D  
 Acq On : 02 Jul 2019 16:56  
 Operator : SY/VA  
 Sample : K3599-07  
 Misc : 5.02G/10ML/MSVOA W/SOIL  
 ALS Vial : 1 Sample Multiplier: 1

Instrument :  
 MSVOA\_W  
 ClientSampled :  
 GAM16

Quant Method : Z:\VOASRV\HPCHEM1\MSVOA\_W\METHOD\SOM2WLM070219S.M  
 Quant Title : VOC Analysis

TIC Library : C:\DATABASE\NIST11.L  
 TIC Integration Parameters: LSCINT.P



Data Path : Z:\VOASRV\HPCHEM1\MSVOA\_W\DATA\VW070219\  
Data File : VW011112.D  
Acq On : 02 Jul 2019 16:56  
Operator : SY/VA  
Sample : K3599-07  
Misc : 5.02G/10ML/MSVOA\_W/SOIL  
ALS Vial : 1 Sample Multiplier: 1

Instrument :  
MSVOA\_W  
ClientSampleId :  
GAM16

Quant Method : Z:\VOASRV\HPCHEM1\MSVOA\_W\METHOD\SOM2WLM070219S.M  
Quant Title : VOC Analysis

TIC Library : C:\DATABASE\NIST11.L  
TIC Integration Parameters: LSCINT.P

No Library Search Compounds Detected

\*\*\*\*\*

Data Path : Z:\VOASRV\HPCHEM1\MSVOA\_W\DATA\VW070219\  
Data File : VW011112.D  
Acq On : 02 Jul 2019 16:56  
Operator : SY/VA  
Sample : K3599-07  
Misc : 5.02G/10ML/MSVOA\_W/SOIL  
ALS Vial : 1 Sample Multiplier: 1

Instrument :  
MSVOA\_W  
ClientSampleId :  
GAM16

Quant Method : Z:\VOASRV\HPCHEM1\MSVOA\_W\METHOD\SOM2WLM070219S.M  
Quant Title : VOC Analysis

TIC Library : C:\DATABASE\NIST11.L  
TIC Integration Parameters: LSCINT.P

TIC Top Hit name	RT	EstConc	Units	Response	--Internal Standard--			
					#	RT	Resp	Conc

---