

Data Path : Z:\VOASRV\HPCHEM1\MSVOA W\DATA\VW070219\  
 Data File : VW011125.D  
 Acq On : 02 Jul 2019 23:55  
 Operator : SY/VA  
 Sample : K3599-01  
 Misc : 5.00G/10ML/MSVOA W/SOIL  
 ALS Vial : 1 Sample Multiplier: 1

Instrument :  
 MSVOA\_W  
 ClientSampled :  
 GAM10

## Integration Parameters: LSCINT.P

Integrator: RTE  
 Smoothing : OFF  
 Sampling : 1  
 Start Thrs: 0.2  
 Stop Thrs : 0

Filtering: 5  
 Min Area: 0 % of largest Peak  
 Max Peaks: 100  
 Peak Location: TOP

If leading or trailing edge < 100 prefer < Baseline drop else tangent >  
 Peak separation: 5

Method : Z:\VOASRV\HPCHEM1\MSVOA\_W\METHOD\SOM2WLM070219S.M  
 Title : VOC Analysis

Signal : TIC

peak #	R.T. min	first scan	max scan	last scan	PK TY	peak height	corr. area	corr. % max.	% of total
1	2.343	67	72	83	rBV	53408	99378	3.89%	1.092%
2	2.885	155	161	176	rVB	33254	84849	3.32%	0.932%
3	3.641	283	285	288	rBV3	542	770	0.03%	0.008%
4	3.855	315	320	321	rBV3	961	1432	0.06%	0.016%
5	4.013	335	346	363	rBV	83869	293801	11.51%	3.228%
6	4.385	405	407	411	rBV2	571	757	0.03%	0.008%
7	4.580	435	439	442	rBV3	373	569	0.02%	0.006%
8	4.611	442	444	445	rBV	478	253	0.01%	0.003%
9	4.696	457	458	460	rVB2	579	284	0.01%	0.003%
10	4.726	460	463	464	rBV2	273	289	0.01%	0.003%
11	4.922	479	495	509	rBV4	8246	36408	1.43%	0.400%
12	5.074	519	520	522	rVB	462	319	0.01%	0.004%
13	5.092	522	523	524	rBV	463	262	0.01%	0.003%
14	5.220	542	544	549	rVB3	254	390	0.02%	0.004%
15	5.342	560	564	566	rBV4	223	257	0.01%	0.003%
16	5.409	573	575	577	rBV2	244	299	0.01%	0.003%
17	5.495	584	589	590	rBV2	332	554	0.02%	0.006%
18	5.562	598	600	602	rVB	352	243	0.01%	0.003%
19	5.720	625	626	627	rBV	354	222	0.01%	0.002%
20	5.775	634	635	636	rBV	441	269	0.01%	0.003%
21	5.793	636	638	640	rVV2	290	327	0.01%	0.004%
22	5.927	652	660	667	rBV5	2974	8714	0.34%	0.096%
23	6.019	672	675	677	rVB3	514	532	0.02%	0.006%
24	6.104	683	689	691	rBV3	502	729	0.03%	0.008%
25	6.214	706	707	708	rBV	432	268	0.01%	0.003%
26	6.281	714	718	719	rBV2	275	280	0.01%	0.003%
27	6.342	726	728	729	rBV2	384	285	0.01%	0.003%
28	6.482	749	751	753	rVV2	366	233	0.01%	0.003%
29	6.501	753	754	759	rVB3	346	396	0.02%	0.004%
30	6.805	801	804	808	rVB	341	472	0.02%	0.005%
31	6.842	808	810	812	rBV	363	237	0.01%	0.003%
32	6.903	816	820	822	rBV3	445	525	0.02%	0.006%
33	6.921	822	823	826	rVB	345	293	0.01%	0.003%
34	6.958	826	829	832	rBV2	291	364	0.01%	0.004%

Data Path : Z:\VOASRV\HPCHEM1\MSVOA W\DATA\VW070219\  
 Data File : VW011125.D  
 Acq On : 02 Jul 2019 23:55  
 Operator : SY/VA  
 Sample : K3599-01  
 Misc : 5.00G/10ML/MSVOA W/SOIL  
 ALS Vial : 1 Sample Multiplier: 1

Instrument :  
 MSVOA\_W  
 ClientSampleId :  
 GAM10

## Integration Parameters: LSCINT.P

Integrator: RTE  
 Smoothing : OFF  
 Sampling : 1  
 Start Thrs: 0.2  
 Stop Thrs : 0

Filtering: 5  
 Min Area: 0 % of largest Peak  
 Max Peaks: 100  
 Peak Location: TOP

If leading or trailing edge < 100 prefer < Baseline drop else tangent >  
 Peak separation: 5

Method : Z:\VOASRV\HPCHEM1\MSVOA\_W\METHOD\SOM2WLM070219S.M  
 Title : VOC Analysis

35	7.074	840	848	854	rBV	37510	103733	4.06%	1.140%
36	7.354	892	894	896	rVB2	598	366	0.01%	0.004%
37	7.421	903	905	907	rVB3	541	365	0.01%	0.004%
38	7.500	916	918	920	rBV2	376	305	0.01%	0.003%
39	7.647	928	942	956	rBV	139784	349069	13.68%	3.835%
40	7.799	963	967	968	rVB	363	354	0.01%	0.004%
41	7.872	977	979	982	rVB2	311	222	0.01%	0.002%
42	7.909	982	985	986	rBV2	415	435	0.02%	0.005%
43	8.037	1005	1006	1009	rBV3	303	336	0.01%	0.004%
44	8.086	1012	1014	1017	rVB2	371	250	0.01%	0.003%
45	8.153	1021	1025	1026	rVB2	213	224	0.01%	0.002%
46	8.177	1026	1029	1031	rVB2	345	279	0.01%	0.003%
47	8.275	1035	1045	1062	rBV2	282123	853866	33.46%	9.381%
48	8.445	1071	1073	1075	rBV2	670	503	0.02%	0.006%
49	8.616	1100	1101	1107	rVB4	549	648	0.03%	0.007%
50	8.842	1128	1138	1152	rBV	328747	650619	25.49%	7.148%
51	9.006	1163	1165	1167	rVB2	347	291	0.01%	0.003%
52	9.085	1169	1178	1186	rVV7	5993	14006	0.55%	0.154%
53	9.274	1197	1209	1219	rBV	211410	431072	16.89%	4.736%
54	9.402	1228	1230	1232	rVB3	391	251	0.01%	0.003%
55	9.573	1256	1258	1259	rVV	433	372	0.01%	0.004%
56	9.610	1262	1264	1265	rVV	499	333	0.01%	0.004%
57	9.622	1265	1266	1268	rVV2	540	490	0.02%	0.005%
58	9.652	1268	1271	1278	rVV5	1810	4337	0.17%	0.048%
59	9.750	1284	1287	1289	rVV2	414	454	0.02%	0.005%
60	9.787	1291	1293	1295	rVB3	399	283	0.01%	0.003%
61	9.878	1307	1308	1312	rVB2	445	523	0.02%	0.006%
62	9.908	1312	1313	1317	rBV3	287	387	0.02%	0.004%
63	9.945	1317	1319	1322	rVB2	409	505	0.02%	0.006%
64	10.030	1324	1333	1344	rBV	100251	184632	7.23%	2.028%
65	10.213	1359	1363	1366	rBV3	368	691	0.03%	0.008%
66	10.323	1373	1381	1388	rBV	384505	677060	26.53%	7.438%
67	10.482	1403	1407	1409	rBV3	548	755	0.03%	0.008%
68	10.579	1416	1423	1430	rBV	64993	115270	4.52%	1.266%
69	10.707	1437	1444	1451	rBV	7619	14005	0.55%	0.154%
70	10.860	1461	1469	1475	rBV	1508059	2552066	100.00%	28.037%
71	10.927	1475	1480	1496	rVV	130885	234870	9.20%	2.580%

Data Path : Z:\VOASRV\HPCHEM1\MSVOA W\DATA\VW070219\  
 Data File : VW011125.D  
 Acq On : 02 Jul 2019 23:55  
 Operator : SY/VA  
 Sample : K3599-01  
 Misc : 5.00G/10ML/MSVOA W/SOIL  
 ALS Vial : 1 Sample Multiplier: 1

Instrument :  
 MSVOA\_W  
 ClientSampleId :  
 GAM10

## Integration Parameters: LSCINT.P

Integrator: RTE  
 Smoothing : OFF Filtering: 5  
 Sampling : 1 Min Area: 0 % of largest Peak  
 Start Thrs: 0.2 Max Peaks: 100  
 Stop Thrs : 0 Peak Location: TOP

If leading or trailing edge < 100 prefer < Baseline drop else tangent >  
 Peak separation: 5

Method : Z:\VOASRV\HPCHEM1\MSVOA\_W\METHOD\SOM2WLM070219S.M  
 Title : VOC Analysis

72	11.061	1499	1502	1509	rVB3	5161	8691	0.34%	0.095%
73	11.268	1534	1536	1537	rBV	470	311	0.01%	0.003%
74	11.335	1545	1547	1549	rBV2	506	546	0.02%	0.006%
75	11.402	1554	1558	1562	rBV6	911	1486	0.06%	0.016%
76	11.536	1576	1580	1582	rBV3	521	758	0.03%	0.008%
77	11.628	1586	1595	1607	rBV	453698	783176	30.69%	8.604%
78	11.792	1620	1622	1624	rBV3	391	381	0.01%	0.004%
79	11.841	1625	1630	1633	rVV4	1177	2208	0.09%	0.024%
80	11.957	1648	1649	1653	rBV2	333	384	0.02%	0.004%
81	11.993	1653	1655	1658	rVB2	634	451	0.02%	0.005%
82	12.170	1678	1684	1691	rVB5	1583	3293	0.13%	0.036%
83	12.225	1691	1693	1695	rBV2	257	270	0.01%	0.003%
84	12.256	1696	1698	1701	rVB2	612	527	0.02%	0.006%
85	12.335	1708	1711	1712	rBV2	397	447	0.02%	0.005%
86	12.463	1729	1732	1735	rBV4	651	751	0.03%	0.008%
87	12.609	1751	1756	1763	rBV	19616	32726	1.28%	0.360%
88	12.695	1763	1770	1777	rBV	169586	280297	10.98%	3.079%
89	12.762	1777	1781	1785	rVB5	883	1524	0.06%	0.017%
90	12.938	1806	1810	1813	rBV2	3154	4463	0.17%	0.049%
91	13.048	1827	1828	1831	rVB2	341	258	0.01%	0.003%
92	13.341	1874	1876	1877	rBV2	550	379	0.01%	0.004%
93	13.377	1880	1882	1883	rVV	522	270	0.01%	0.003%
94	13.560	1905	1912	1920	rVB	424095	681552	26.71%	7.488%
95	13.853	1953	1960	1968	rBV	323589	535093	20.97%	5.879%
96	14.072	1991	1996	2004	rVB2	13336	22621	0.89%	0.249%
97	14.335	2034	2039	2044	rBV6	4708	7079	0.28%	0.078%
98	14.627	2084	2087	2093	rBV6	643	1324	0.05%	0.015%
99	14.725	2100	2103	2106	rBV4	895	1342	0.05%	0.015%
100	15.292	2194	2196	2197	rBV2	558	358	0.01%	0.004%

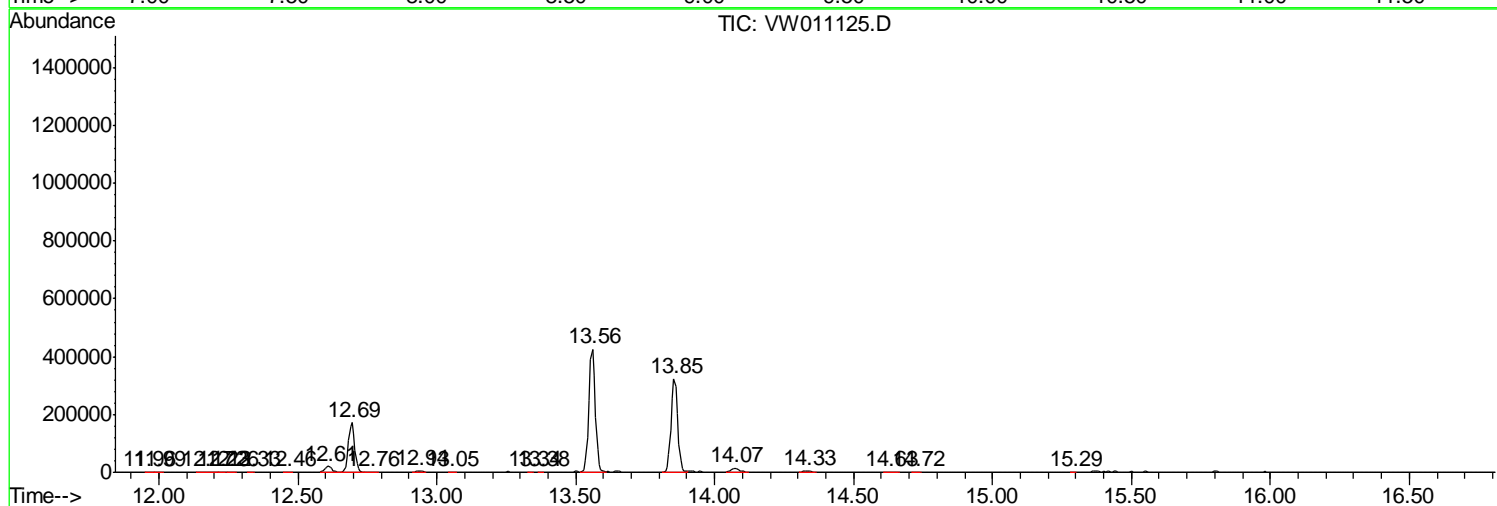
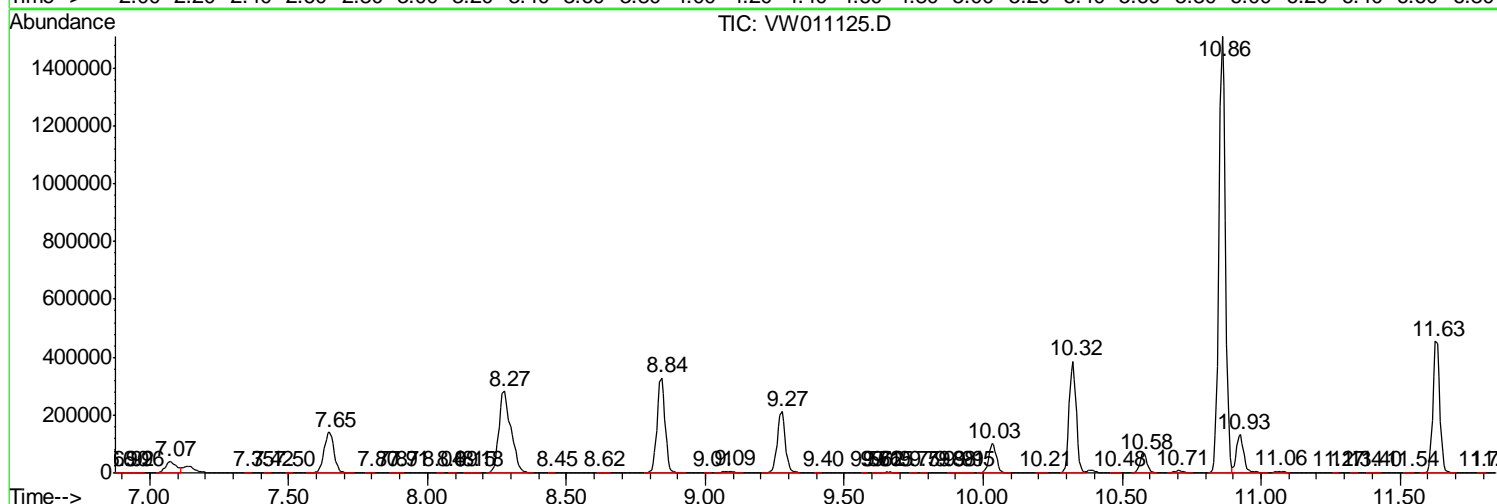
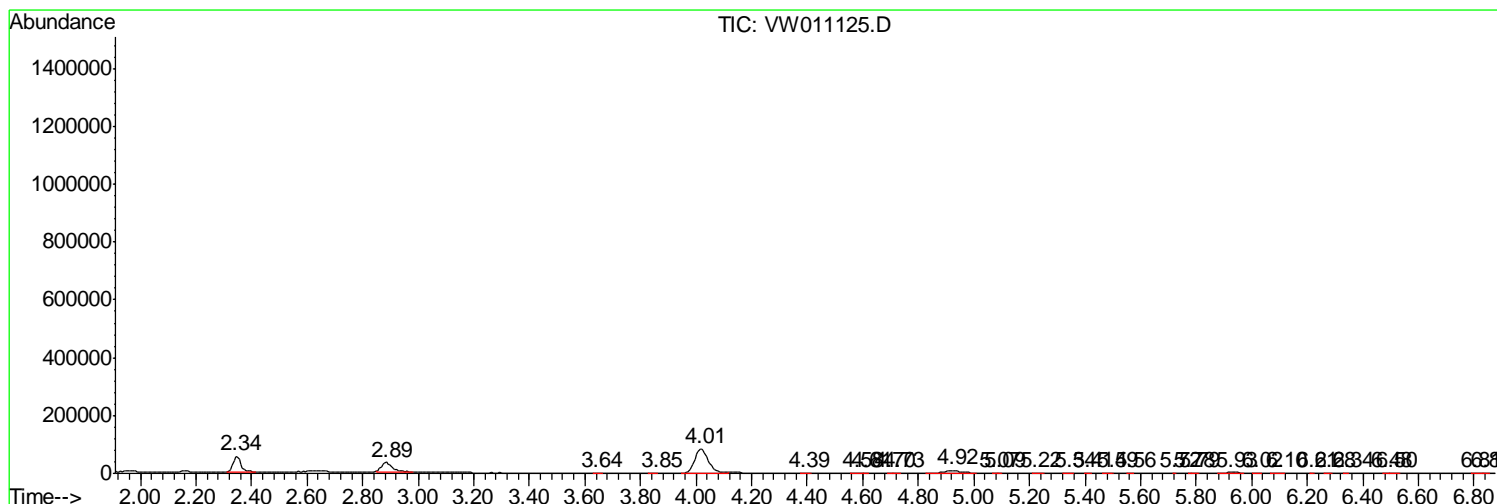
Sum of corrected areas: 9102453

Data Path : Z:\VOASRV\HPCHEM1\MSVOA W\DATA\VW070219\  
 Data File : VW011125.D  
 Acq On : 02 Jul 2019 23:55  
 Operator : SY/VA  
 Sample : K3599-01  
 Misc : 5.00G/10ML/MSVOA W/SOIL  
 ALS Vial : 1 Sample Multiplier: 1

Instrument :  
 MSVOA\_W  
 ClientSampleId :  
 GAM10

Quant Method : Z:\VOASRV\HPCHEM1\MSVOA\_W\METHOD\SOM2WLM070219S.M  
 Quant Title : VOC Analysis

TIC Library : C:\DATABASE\NIST11.L  
 TIC Integration Parameters: LSCINT.P



Data Path : Z:\VOASRV\HPCHEM1\MSVOA\_W\DATA\VW070219\  
Data File : VW011125.D  
Acq On : 02 Jul 2019 23:55  
Operator : SY/VA  
Sample : K3599-01  
Misc : 5.00G/10ML/MSVOA\_W/SOIL  
ALS Vial : 1 Sample Multiplier: 1

Instrument :  
MSVOA\_W  
ClientSampleId :  
GAM10

Quant Method : Z:\VOASRV\HPCHEM1\MSVOA\_W\METHOD\SOM2WLM070219S.M  
Quant Title : VOC Analysis

TIC Library : C:\DATABASE\NIST11.L  
TIC Integration Parameters: LSCINT.P

No Library Search Compounds Detected

\*\*\*\*\*

Data Path : Z:\VOASRV\HPCHEM1\MSVOA\_W\DATA\VW070219\  
Data File : VW011125.D  
Acq On : 02 Jul 2019 23:55  
Operator : SY/VA  
Sample : K3599-01  
Misc : 5.00G/10ML/MSVOA\_W/SOIL  
ALS Vial : 1 Sample Multiplier: 1

Instrument :  
MSVOA\_W  
ClientSampleId :  
GAM10

Quant Method : Z:\VOASRV\HPCHEM1\MSVOA\_W\METHOD\SOM2WLM070219S.M  
Quant Title : VOC Analysis

TIC Library : C:\DATABASE\NIST11.L  
TIC Integration Parameters: LSCINT.P

TIC Top Hit name	RT	EstConc	Units	Response	--Internal Standard--			
					#	RT	Resp	Conc

---