

Data Path : Z:\VOASRV\HPCHEM1\MSVOA W\DATA\VW070219\
 Data File : VW011128.D
 Acq On : 03 Jul 2019 01:16
 Operator : SY/VA
 Sample : VIBLK32
 Misc : 5.00G/10ML/MSVOA W/SOIL
 ALS Vial : 1 Sample Multiplier: 1

Instrument :
 MSVOA_W
 ClientSampled :
 VIBLK32

Integration Parameters: LSCINT.P

Integrator: RTE
 Smoothing : OFF
 Sampling : 1
 Start Thrs: 0.2
 Stop Thrs : 0

Filtering: 5
 Min Area: 0 % of largest Peak
 Max Peaks: 100
 Peak Location: TOP

If leading or trailing edge < 100 prefer < Baseline drop else tangent >
 Peak separation: 5

Method : Z:\VOASRV\HPCHEM1\MSVOA_W\METHOD\SOM2WLM070219S.M
 Title : VOC Analysis

Signal : TIC

peak #	R.T. min	first scan	max scan	last scan	PK TY	peak height	corr. area	corr. % max.	% of total
1	2.343	67	72	85	rVB	83233	157076	12.92%	1.747%
2	2.879	154	160	170	rBV	46432	120203	9.89%	1.337%
3	3.867	314	322	333	rBV8	1568	5176	0.43%	0.058%
4	4.013	336	346	363	rBV	119908	407850	33.54%	4.537%
5	4.324	395	397	398	rBV2	267	207	0.02%	0.002%
6	4.391	401	408	416	rVV2	2943	9374	0.77%	0.104%
7	4.464	419	420	425	rVV6	436	483	0.04%	0.005%
8	4.678	453	455	458	rVB3	435	373	0.03%	0.004%
9	4.708	458	460	462	rBV3	488	511	0.04%	0.006%
10	4.800	473	475	477	rBV2	435	433	0.04%	0.005%
11	4.824	477	479	481	rVB2	661	485	0.04%	0.005%
12	4.922	481	495	505	rBV6	4265	19035	1.57%	0.212%
13	5.080	520	521	524	rVB	431	344	0.03%	0.004%
14	5.111	524	526	527	rBV	391	341	0.03%	0.004%
15	5.245	544	548	550	rBV2	348	521	0.04%	0.006%
16	5.275	550	553	555	rVV3	367	402	0.03%	0.004%
17	5.312	557	559	560	rBV	448	255	0.02%	0.003%
18	5.330	560	562	563	rBV2	413	305	0.03%	0.003%
19	5.854	646	648	649	rBV	347	296	0.02%	0.003%
20	5.885	651	653	654	rBV	633	514	0.04%	0.006%
21	6.043	678	679	683	rBV3	226	293	0.02%	0.003%
22	6.080	683	685	686	rBV2	246	206	0.02%	0.002%
23	6.123	689	692	694	rVV2	397	538	0.04%	0.006%
24	6.159	697	698	702	rVB3	446	387	0.03%	0.004%
25	6.220	704	708	709	rBV2	275	328	0.03%	0.004%
26	6.263	712	715	716	rBV	337	362	0.03%	0.004%
27	6.342	726	728	732	rVB2	290	376	0.03%	0.004%
28	6.391	734	736	737	rVV	405	270	0.02%	0.003%
29	6.434	741	743	747	rVB2	321	405	0.03%	0.005%
30	6.488	749	752	755	rBV2	321	511	0.04%	0.006%
31	6.592	767	769	770	rBV	309	240	0.02%	0.003%
32	6.726	788	791	792	rBV	284	262	0.02%	0.003%
33	6.848	809	811	813	rVB	385	294	0.02%	0.003%
34	6.866	813	814	817	rBV2	443	370	0.03%	0.004%

Data Path : Z:\VOASRV\HPCHEM1\MSVOA W\DATA\VW070219\
 Data File : VW011128.D
 Acq On : 03 Jul 2019 01:16
 Operator : SY/VA
 Sample : VIBLK32
 Misc : 5.00G/10ML/MSVOA W/SOIL
 ALS Vial : 1 Sample Multiplier: 1

Instrument :
 MSVOA_W
 ClientSampleId :
 VIBLK32

Integration Parameters: LSCINT.P

Integrator: RTE
 Smoothing : OFF
 Sampling : 1
 Start Thrs: 0.2
 Stop Thrs : 0

Filtering: 5
 Min Area: 0 % of largest Peak
 Max Peaks: 100
 Peak Location: TOP

If leading or trailing edge < 100 prefer < Baseline drop else tangent >
 Peak separation: 5

Method : Z:\VOASRV\HPCHEM1\MSVOA_W\METHOD\SOM2WLM070219S.M
 Title : VOC Analysis

35	6.994	834	835	837	rBV2	335	267	0.02%	0.003%
36	7.074	839	848	868	rVV2	53299	177979	14.64%	1.980%
37	7.385	897	899	902	rVB2	569	462	0.04%	0.005%
38	7.458	909	911	914	rBV3	447	452	0.04%	0.005%
39	7.513	918	920	921	rVB	455	270	0.02%	0.003%
40	7.574	928	930	931	rBV	438	259	0.02%	0.003%
41	7.647	931	942	955	rVV	189138	466500	38.37%	5.189%
42	7.976	995	996	998	rVB	445	199	0.02%	0.002%
43	8.067	1009	1011	1013	rBV3	329	335	0.03%	0.004%
44	8.098	1013	1016	1018	rBV2	243	363	0.03%	0.004%
45	8.153	1020	1025	1026	rBV2	381	581	0.05%	0.006%
46	8.275	1032	1045	1061	rBV2	398421	1215930	100.00%	13.526%
47	8.677	1109	1111	1112	rBV2	533	362	0.03%	0.004%
48	8.756	1121	1124	1126	rVB2	570	513	0.04%	0.006%
49	8.842	1126	1138	1147	rBV	413034	813278	66.89%	9.047%
50	8.957	1155	1157	1158	rBV2	384	260	0.02%	0.003%
51	9.025	1166	1168	1171	rVV2	532	670	0.06%	0.007%
52	9.073	1171	1176	1184	rVB7	2071	4711	0.39%	0.052%
53	9.165	1190	1191	1194	rVB3	532	490	0.04%	0.005%
54	9.189	1194	1195	1197	rBV2	341	311	0.03%	0.003%
55	9.274	1199	1209	1219	rBV	287964	587694	48.33%	6.538%
56	9.439	1234	1236	1243	rVB4	635	909	0.07%	0.010%
57	9.561	1254	1256	1257	rBV	371	249	0.02%	0.003%
58	9.634	1266	1268	1269	rVV2	354	257	0.02%	0.003%
59	9.652	1269	1271	1278	rVB7	1151	2017	0.17%	0.022%
60	9.811	1295	1297	1300	rVB2	347	331	0.03%	0.004%
61	9.848	1300	1303	1304	rBV3	335	311	0.03%	0.003%
62	9.890	1304	1310	1316	rVV4	2488	5634	0.46%	0.063%
63	9.970	1322	1323	1326	rBV2	278	260	0.02%	0.003%
64	10.030	1326	1333	1343	rBV	143593	265544	21.84%	2.954%
65	10.323	1373	1381	1389	rBV	553811	954148	78.47%	10.614%
66	10.482	1405	1407	1409	rBV3	415	424	0.03%	0.005%
67	10.500	1409	1410	1412	rVB2	473	260	0.02%	0.003%
68	10.579	1416	1423	1432	rBV	95007	169494	13.94%	1.885%
69	10.701	1438	1443	1450	rVB	21484	37578	3.09%	0.418%
70	10.847	1464	1467	1471	rVB4	829	1393	0.11%	0.015%
71	10.927	1472	1480	1491	rBV	199564	350783	28.85%	3.902%

Data Path : Z:\VOASRV\HPCHEM1\MSVOA W\DATA\VW070219\
 Data File : VW011128.D
 Acq On : 03 Jul 2019 01:16
 Operator : SY/VA
 Sample : VIBLK32
 Misc : 5.00G/10ML/MSVOA W/SOIL
 ALS Vial : 1 Sample Multiplier: 1

Instrument :
 MSVOA_W
 ClientSampleId :
 VIBLK32

Integration Parameters: LSCINT.P

Integrator: RTE
 Smoothing : OFF Filtering: 5
 Sampling : 1 Min Area: 0 % of largest Peak
 Start Thrs: 0.2 Max Peaks: 100
 Stop Thrs : 0 Peak Location: TOP

If leading or trailing edge < 100 prefer < Baseline drop else tangent >
 Peak separation: 5

Method : Z:\VOASRV\HPCHEM1\MSVOA_W\METHOD\SOM2WLM070219S.M
 Title : VOC Analysis

72	11.256	1532	1534	1536	rBV3	373	333	0.03%	0.004%
73	11.524	1577	1578	1580	rBV2	284	248	0.02%	0.003%
74	11.628	1586	1595	1606	rBV	595518	1006272	82.76%	11.194%
75	11.774	1617	1619	1620	rBV2	458	216	0.02%	0.002%
76	11.823	1624	1627	1628	rBV2	434	474	0.04%	0.005%
77	11.866	1633	1634	1639	rVB5	675	870	0.07%	0.010%
78	12.000	1653	1656	1659	rVB3	553	601	0.05%	0.007%
79	12.036	1659	1662	1663	rBV2	465	344	0.03%	0.004%
80	12.067	1665	1667	1668	rVV	427	292	0.02%	0.003%
81	12.085	1668	1670	1671	rVV2	408	244	0.02%	0.003%
82	12.103	1671	1673	1676	rVB3	302	293	0.02%	0.003%
83	12.134	1676	1678	1679	rBV2	294	201	0.02%	0.002%
84	12.286	1700	1703	1707	rBV4	348	596	0.05%	0.007%
85	12.347	1710	1713	1716	rVB4	712	927	0.08%	0.010%
86	12.463	1729	1732	1736	rBV4	889	1233	0.10%	0.014%
87	12.609	1750	1756	1761	rVB	16930	28777	2.37%	0.320%
88	12.695	1761	1770	1777	rBV	237952	392203	32.26%	4.363%
89	12.853	1795	1796	1797	rBV	413	249	0.02%	0.003%
90	12.871	1797	1799	1803	rVB2	645	482	0.04%	0.005%
91	12.926	1806	1808	1812	rVV4	887	1125	0.09%	0.013%
92	13.127	1839	1841	1842	rBV2	469	222	0.02%	0.002%
93	13.408	1879	1887	1893	rBV4	4122	7918	0.65%	0.088%
94	13.560	1905	1912	1919	rBV	586313	929691	76.46%	10.342%
95	13.853	1953	1960	1968	rBV	487251	793520	65.26%	8.827%
96	14.072	1992	1996	2002	rVB2	8197	12566	1.03%	0.140%
97	14.469	2059	2061	2063	rBV2	485	417	0.03%	0.005%
98	14.566	2075	2077	2080	rBV3	437	534	0.04%	0.006%
99	14.975	2142	2144	2147	rBV4	512	649	0.05%	0.007%
100	15.444	2216	2221	2226	rVB2	11011	17416	1.43%	0.194%

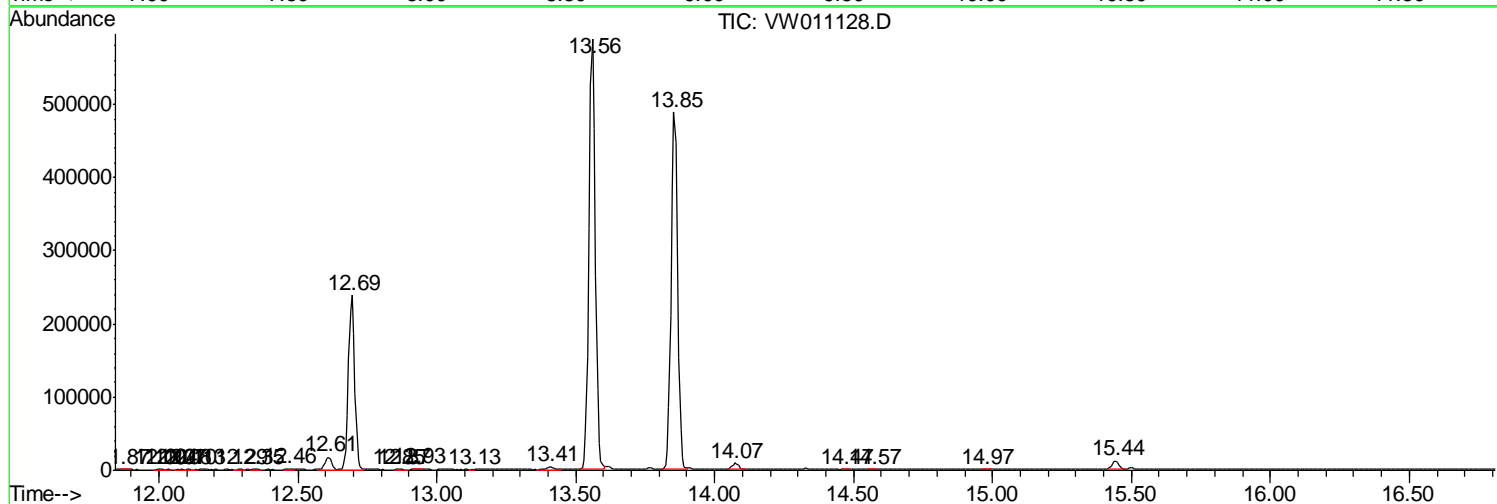
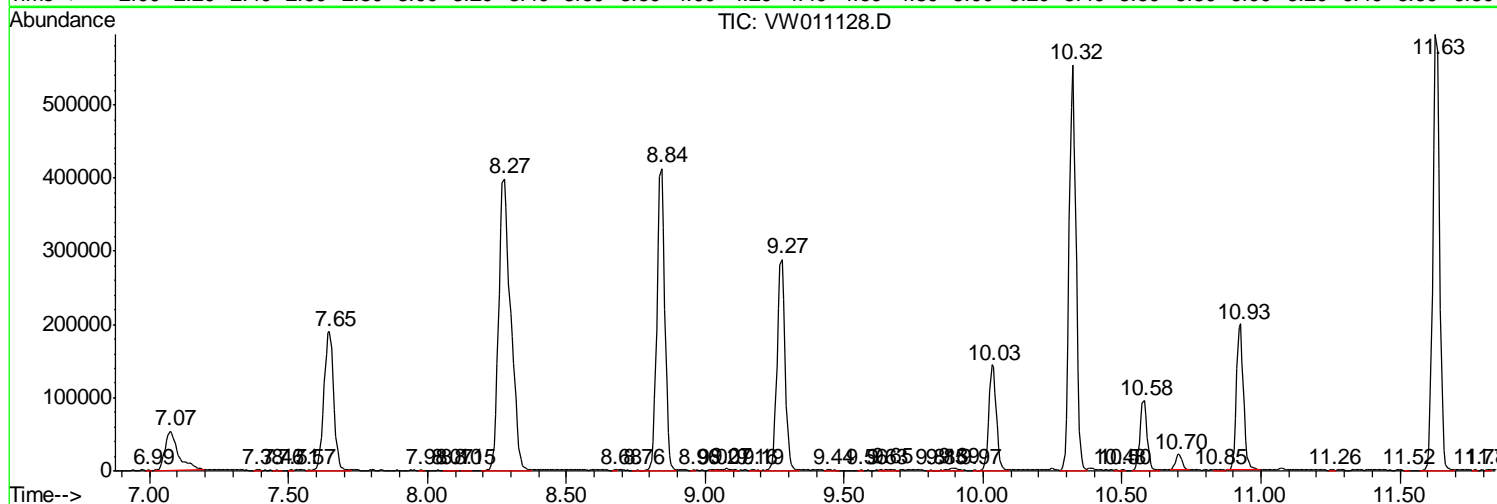
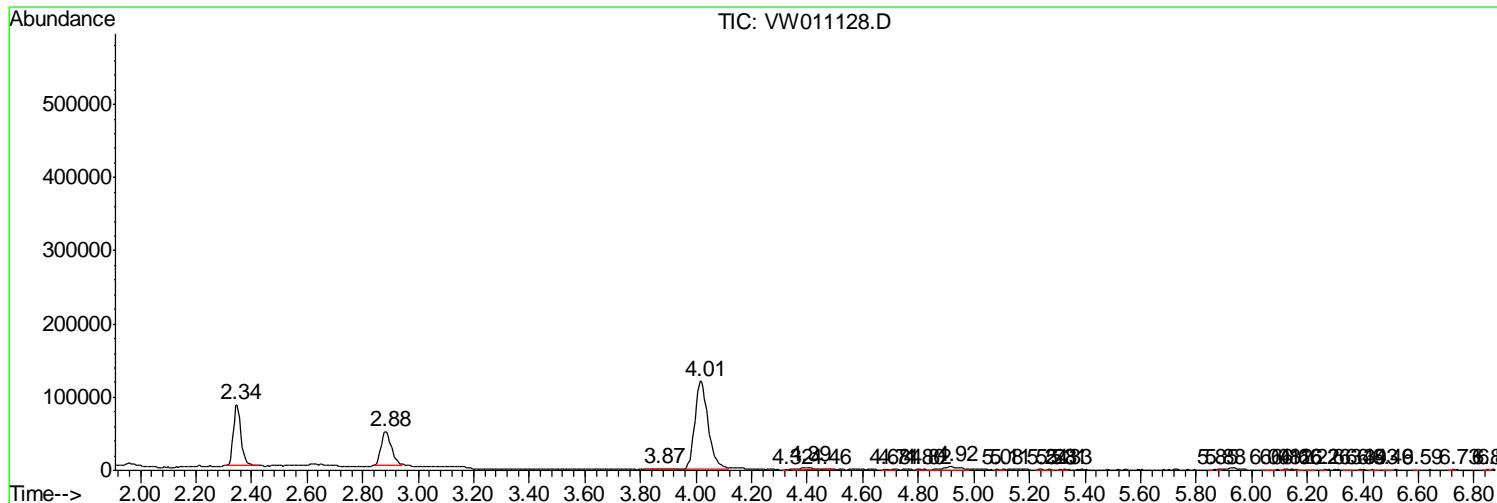
Sum of corrected areas: 8989417

Data Path : Z:\VOASRV\HPCHEM1\MSVOA W\DATA\VW070219\
 Data File : VW011128.D
 Acq On : 03 Jul 2019 01:16
 Operator : SY/VA
 Sample : VIBLK32
 Misc : 5.00G/10ML/MSVOA W/SOIL
 ALS Vial : 1 Sample Multiplier: 1

Instrument :
 MSVOA_W
 Client Sampled :
 VIBLK32

Quant Method : Z:\VOASRV\HPCHEM1\MSVOA_W\METHOD\SOM2WLM070219S.M
 Quant Title : VOC Analysis

TIC Library : C:\DATABASE\NIST11.L
 TIC Integration Parameters: LSCINT.P



Data Path : Z:\VOASRV\HPCHEM1\MSVOA W\DATA\VW070219\
 Data File : VW011128.D
 Acq On : 03 Jul 2019 01:16
 Operator : SY/VA
 Sample : VIBLK32
 Misc : 5.00G/10ML/MSVOA W/SOIL
 ALS Vial : 1 Sample Multiplier: 1

Instrument :
 MSVOA_W
 ClientSampled :
 VIBLK32

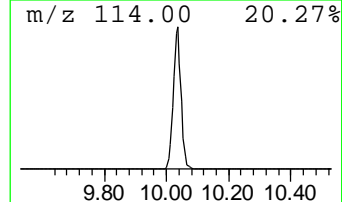
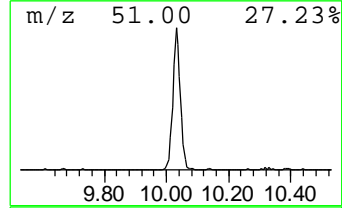
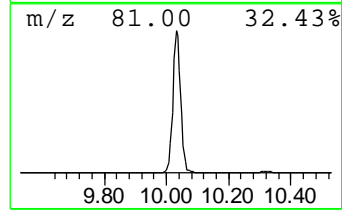
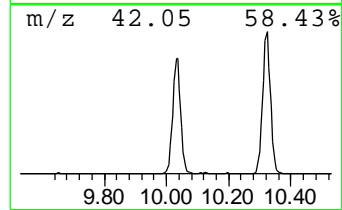
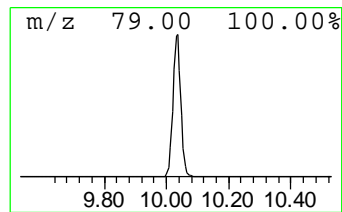
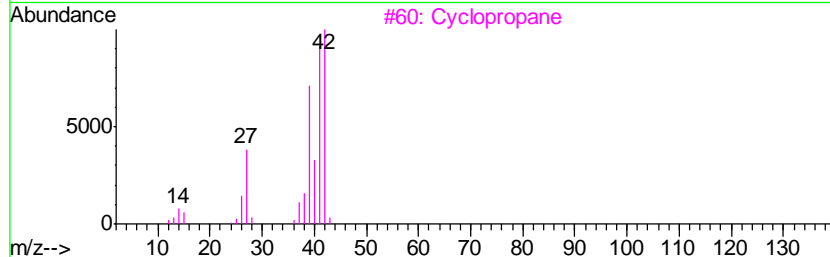
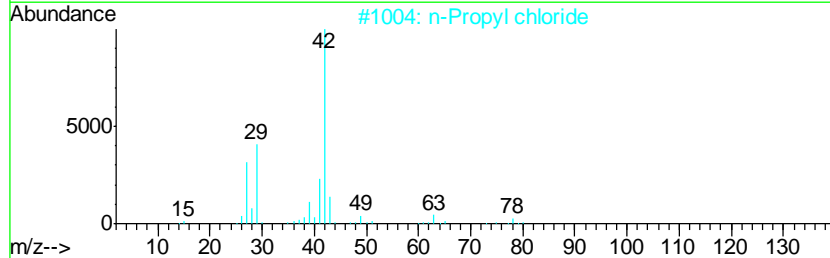
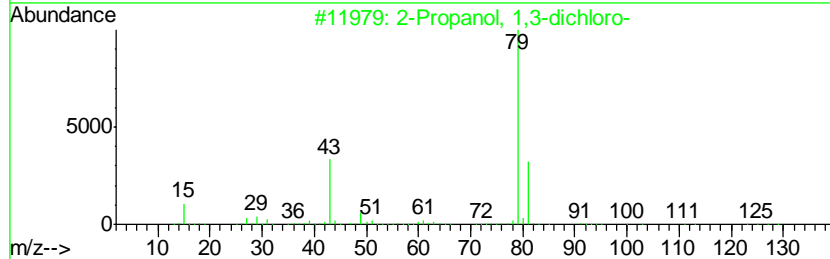
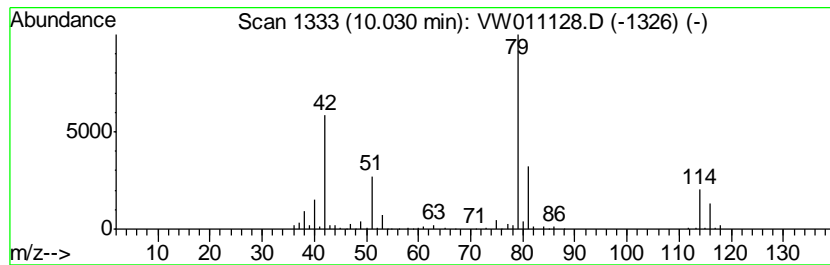
Quant Method : Z:\VOASRV\HPCHEM1\MSVOA_W\METHOD\SOM2WLM070219S.M
 Quant Title : VOC Analysis

TIC Library : C:\DATABASE\NIST11.L
 TIC Integration Parameters: LSCINT.P

 Peak Number 1 unknown-01 Concentration Rank 1

R.T.	EstConc	Area	Relative to ISTD	R.T.
10.03	8.16 ug/L	265544	1,4-Difluorobenzene	8.84

Hit#	of	Tentative ID	MW	MolForm	CAS#	Qual
1	5	2-Propanol, 1,3-dichloro-	128	C3H6Cl2O	000096-23-1	17
2		n-Propyl chloride	78	C3H7Cl	000540-54-5	9
3		Cyclopropane	42	C3H6	000075-19-4	9
4		Methane, oxybis[chloro-	114	C2H4Cl2O	000542-88-1	9
5		Methane, oxybis[chloro-	114	C2H4Cl2O	000542-88-1	9



Data Path : Z:\VOASRV\HPCHEM1\MSVOA_W\DATA\VW070219\
Data File : VW011128.D
Acq On : 03 Jul 2019 01:16
Operator : SY/VA
Sample : VIBLK32
Misc : 5.00G/10ML/MSVOA_W/SOIL
ALS Vial : 1 Sample Multiplier: 1

Instrument :
MSVOA_W
ClientSampleId :
VIBLK32

Quant Method : Z:\VOASRV\HPCHEM1\MSVOA_W\METHOD\SOM2WLM070219S.M
Quant Title : VOC Analysis

TIC Library : C:\DATABASE\NIST11.L
TIC Integration Parameters: LSCINT.P

TIC Top Hit name	RT	EstConc	Units	Response	--Internal Standard--			
					#	RT	Resp	Conc
unknown-01	10.03	8.2	ug/L	265544	1	8.84	813278	25.0