

Data Path : Z:\voasrv\HPCHEM1\MSVOA_W\Data\VW070524\
 Data File : VW029466.D
 Acq On : 05 Jul 2024 11:55
 Operator : SY/MD
 Sample : P3139-05
 Misc : 5.01g/10mL/MSVOA_W/SOIL/A
 ALS Vial : 8 Sample Multiplier: 1

Instrument :
 MSVOA_W
 ClientSampleId :

Quant Time: Jul 06 00:23:41 2024
 Quant Method : Z:\voasrv\HPCHEM1\MSVOA_W\Method\SFAMWLM061824SMA.M
 Quant Title : SFAM01.0
 QLast Update : Sat Jul 06 00:21:19 2024
 Response via : Initial Calibration

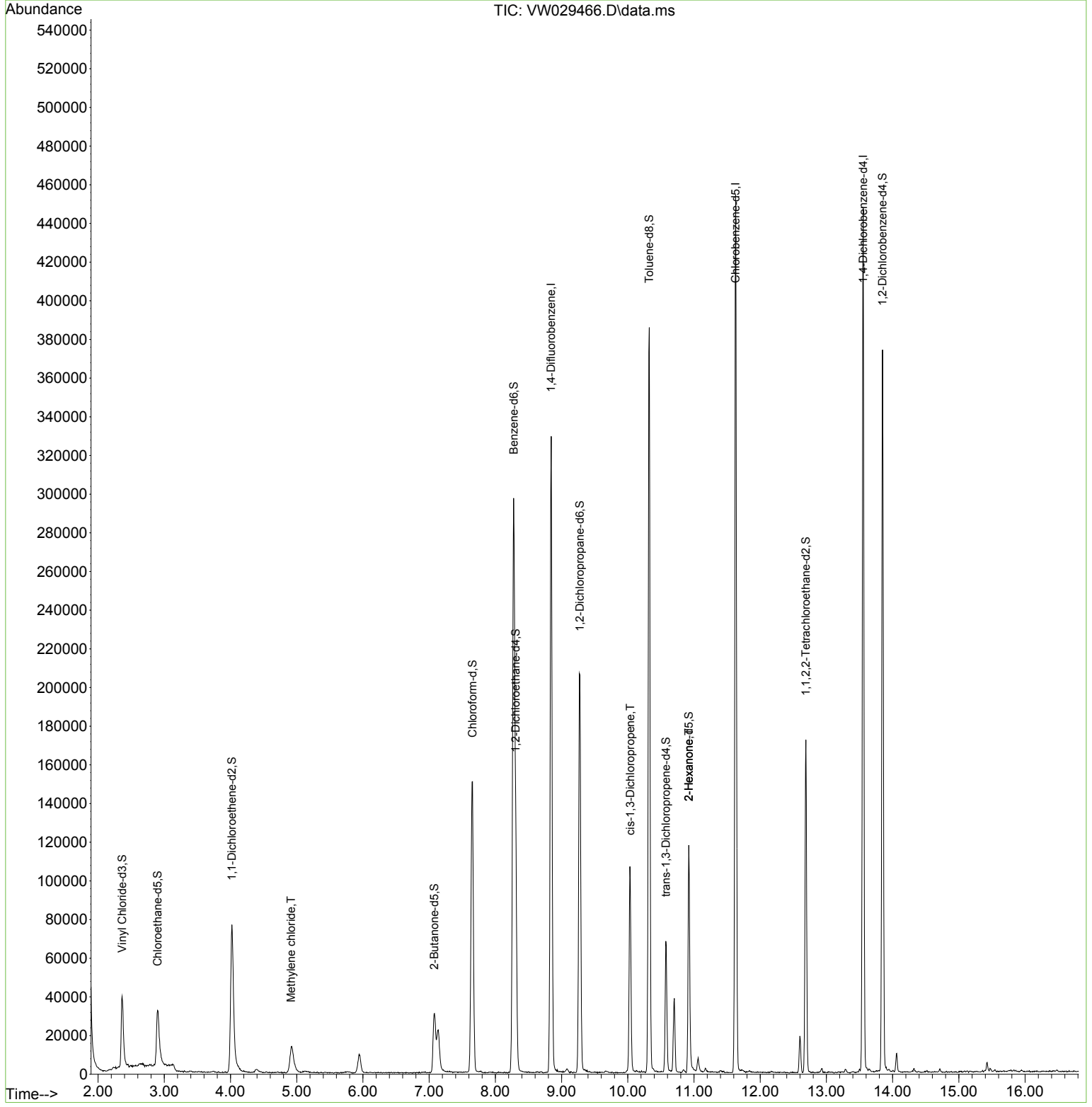
Compound	R.T.	QIon	Response	Conc	Units	Dev(Min)
Internal Standards						
1) 1,4-Difluorobenzene	8.843	114	249871	25.000	ug/L	0.00
28) Chlorobenzene-d5	11.629	117	238143	25.000	ug/L	0.00
58) 1,4-Dichlorobenzene-d4	13.556	152	106410	25.000	ug/L	0.00
System Monitoring Compounds						
4) Vinyl Chloride-d3	2.363	65	54318	15.706	ug/L	0.00
Spiked Amount	25.000	Range 30 - 150	Recovery =	62.840%		
7) Chloroethane-d5	2.899	69	48556	16.625	ug/L	0.00
Spiked Amount	25.000	Range 30 - 150	Recovery =	66.520%		
11) 1,1-Dichloroethene-d2	4.021	65	28811	17.253	ug/L	0.00
Spiked Amount	25.000	Range 45 - 110	Recovery =	69.000%		
21) 2-Butanone-d5	7.075	46	55916	54.039	ug/L	0.00
Spiked Amount	50.000	Range 20 - 135	Recovery =	108.080%		
24) Chloroform-d	7.654	84	152912	20.515	ug/L	0.00
Spiked Amount	25.000	Range 40 - 150	Recovery =	82.040%		
26) 1,2-Dichloroethane-d4	8.307	65	92624	21.643	ug/L	0.00
Spiked Amount	25.000	Range 70 - 130	Recovery =	86.560%		
32) Benzene-d6	8.276	84	286404	19.800	ug/L	0.00
Spiked Amount	25.000	Range 20 - 135	Recovery =	79.200%		
36) 1,2-Dichloropropane-d6	9.276	67	96923	21.079	ug/L	0.00
Spiked Amount	25.000	Range 70 - 120	Recovery =	84.320%		
41) Toluene-d8	10.325	98	247197	19.316	ug/L	0.00
Spiked Amount	25.000	Range 30 - 130	Recovery =	77.280%		
43) trans-1,3-Dichloroprop...	10.575	79	36610	19.758	ug/L	0.00
Spiked Amount	25.000	Range 30 - 135	Recovery =	79.040%		
47) 2-Hexanone-d5	10.922	63	36674	50.879	ug/L	0.00
Spiked Amount	50.000	Range 20 - 135	Recovery =	101.760%		
56) 1,1,2,2-Tetrachloroeth...	12.690	84	84528	23.098	ug/L	0.00
Spiked Amount	25.000	Range 45 - 120	Recovery =	92.400%		
66) 1,2-Dichlorobenzene-d4	13.848	152	91116	24.669	ug/L	0.00
Spiked Amount	25.000	Range 75 - 120	Recovery =	98.680%		
Target Compounds						
16) Methylene chloride	4.917	84	11291	2.570	ug/L	93
39) cis-1,3-Dichloropropene	10.038	75	2815	0.495	ug/L #	76
48) 2-Hexanone	10.922	43	5015	2.836	ug/L #	72

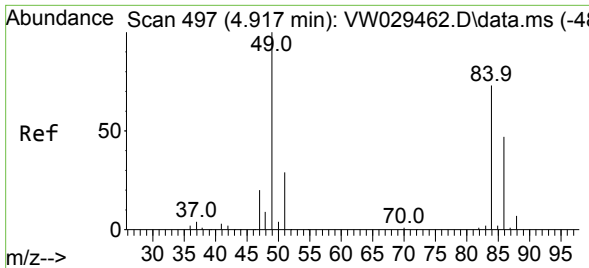
(#) = qualifier out of range (m) = manual integration (+) = signals summed

Data Path : Z:\voasrv\HPCHEM1\MSVOA_W\Data\VW070524\
 Data File : VW029466.D
 Acq On : 05 Jul 2024 11:55
 Operator : SY/MD
 Sample : P3139-05
 Misc : 5.01g/10mL/MSVOA_W/SOIL/A
 ALS Vial : 8 Sample Multiplier: 1

Instrument :
 MSVOA_W
 ClientSampleId :

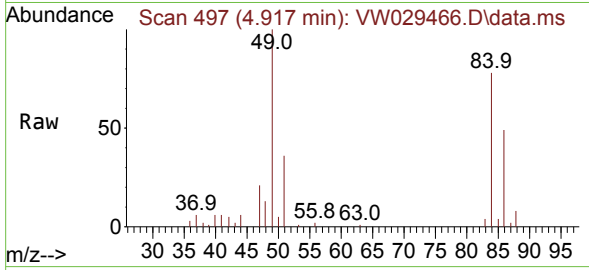
Quant Time: Jul 06 00:23:41 2024
 Quant Method : Z:\voasrv\HPCHEM1\MSVOA_W\Method\SFAMWLM061824SMA.M
 Quant Title : SFAM01.0
 QLast Update : Sat Jul 06 00:21:19 2024
 Response via : Initial Calibration





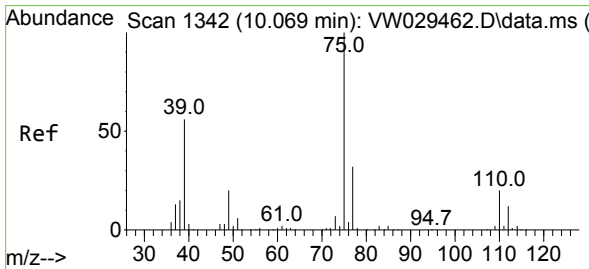
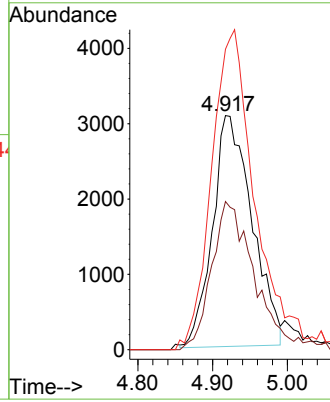
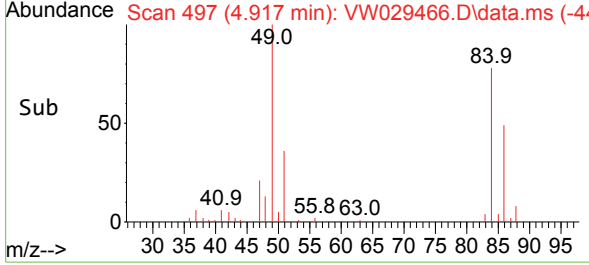
#16
 Methylene chloride
 Concen: 2.570 ug/L
 RT: 4.917 min Scan# 49
 Delta R.T. 0.000 min
 Lab File: VW029466.D
 Acq: 05 Jul 2024 11:55

Instrument : MSVOA_W
 ClientSampleId :

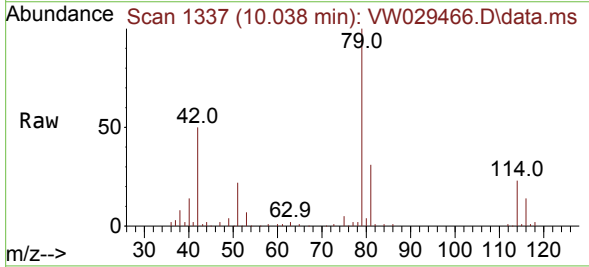


Tgt Ion: 84 Resp: 11291

Ion	Ratio	Lower	Upper
84	100		
86	63.3	41.4	77.0
49	128.4	95.7	177.7

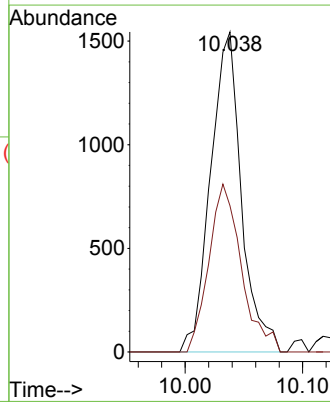
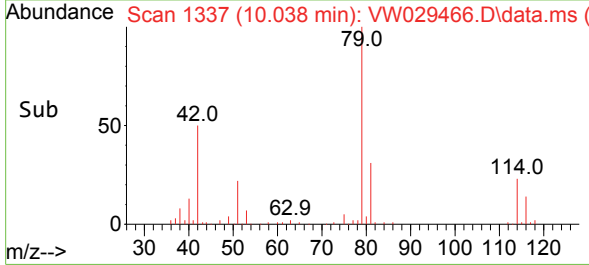


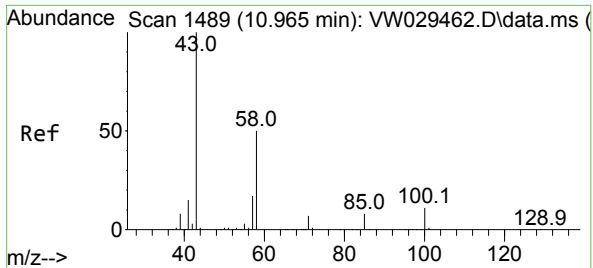
#39
 cis-1,3-Dichloropropene
 Concen: 0.495 ug/L
 RT: 10.038 min Scan# 1337
 Delta R.T. -0.030 min
 Lab File: VW029466.D
 Acq: 05 Jul 2024 11:55



Tgt Ion: 75 Resp: 2815

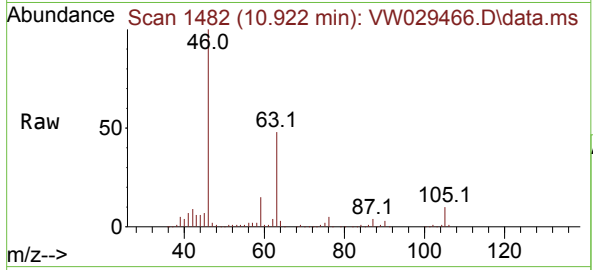
Ion	Ratio	Lower	Upper
75	100		
77	45.7	22.7	42.1





#48
 2-Hexanone
 Concen: 2.836 ug/L
 RT: 10.922 min Scan# 14
 Delta R.T. -0.043 min
 Lab File: VW029466.D
 Acq: 05 Jul 2024 11:55

Instrument : MSVOA_W
 ClientSampleId :



Tgt Ion: 43 Resp: 5015

Ion	Ratio	Lower	Upper
43	100		
58	30.7	39.6	59.4#
57	34.1	14.6	21.8#
100	3.5	8.2	12.2#

