

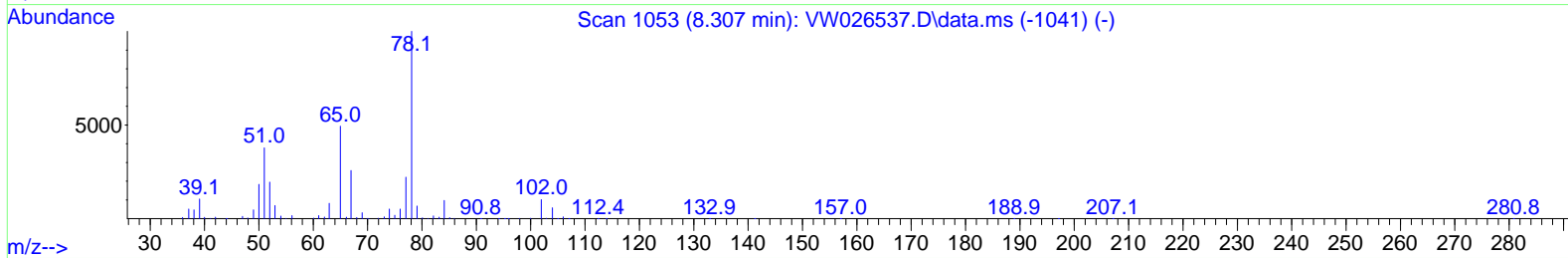
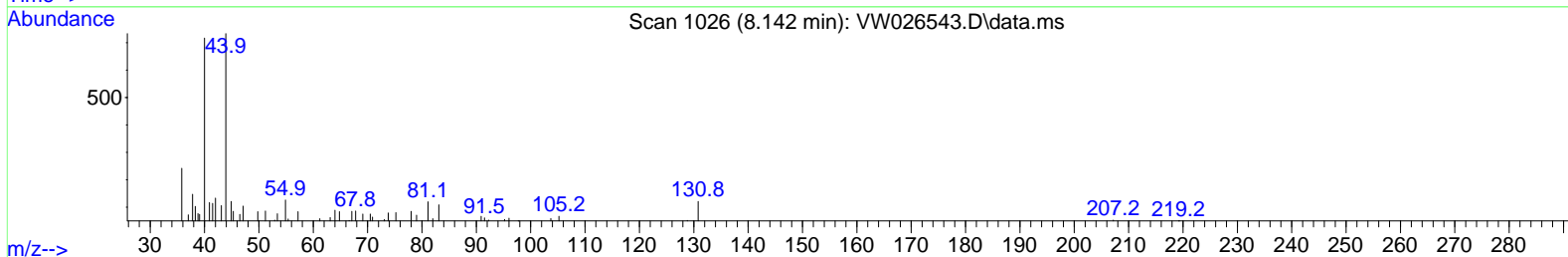
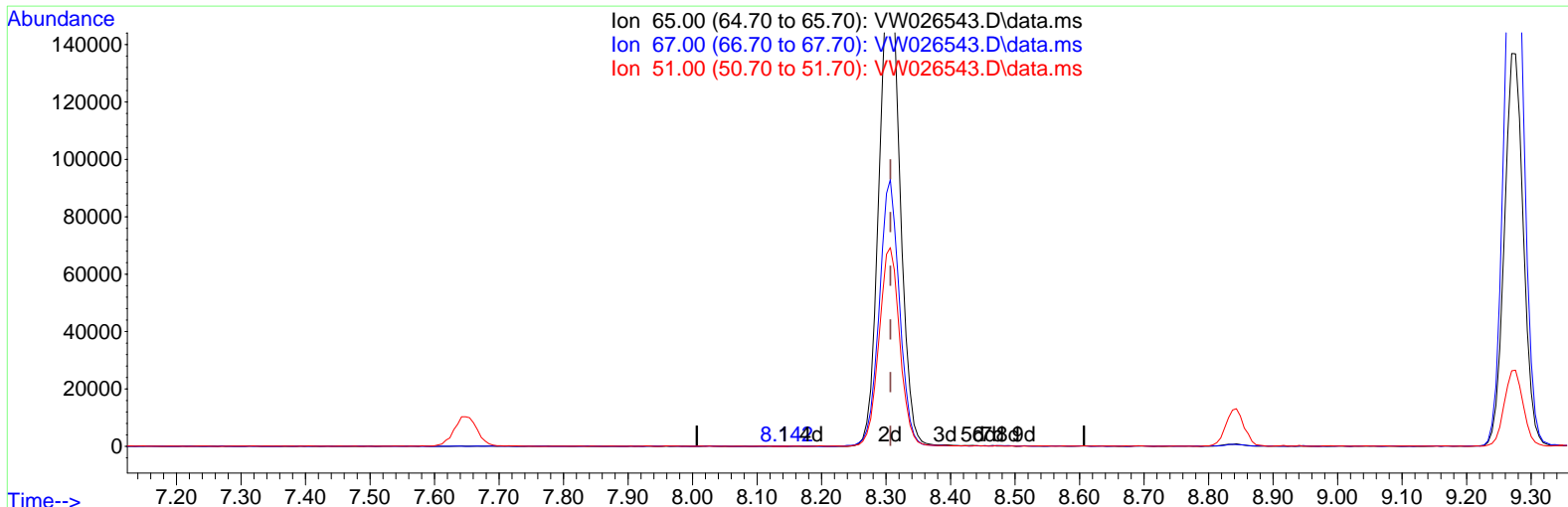
Data Path : Z:\voasrv\HPCHEM1\MSVOA_W\Data\VW070623\
 Data File : VW026543.D
 Acq On : 06 Jul 2023 15:41
 Operator : SY/MD
 Sample : 03534-11
 Misc : 5.15g/10mL/MSVOA_W/SOIL
 ALS Vial : 1 Sample Multiplier: 1

Instrument :
 MSVOA_W
 ClientSampleId :
 A4723

Manual Integrations APPROVED

Reviewed By : John Carlone 07/07/2023
 Supervised By : Semsettin Yesilyurt 07/07/2023

Quant Time: Jul 07 02:34:54 2023
 Quant Method : Z:\voasrv\HPCHEM1\MSVOA_W\Method\SFAMWLM070323SMA.M
 Quant Title : SFAM01.0
 QLast Update : Tue Jul 04 13:17:14 2023
 Response via : Initial Calibration



TIC: VW026543.D\data.ms

(26) 1,2-Dichloroethane-d4 (S)

8.142min (-0.165) 0.00 ug/L

response	89	
Ion	Exp%	Act%
65.00	100.00	100.00
67.00	52.90	68.54
51.00	108.40	106.74
0.00	0.00	0.00

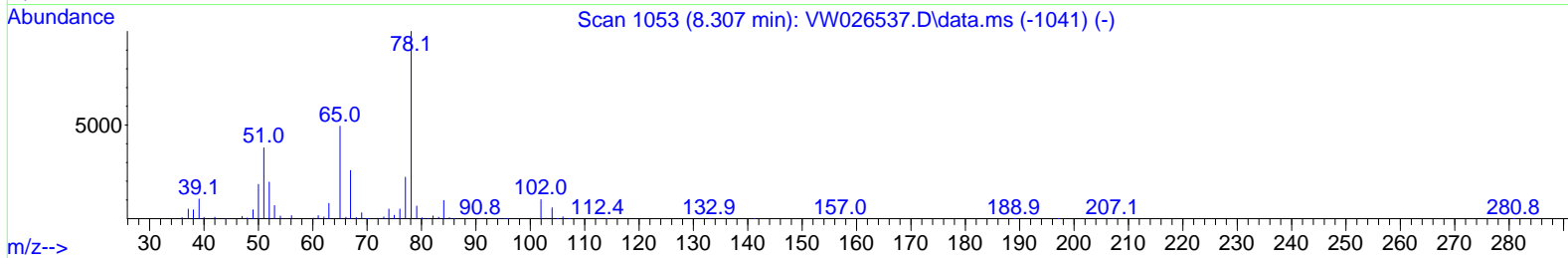
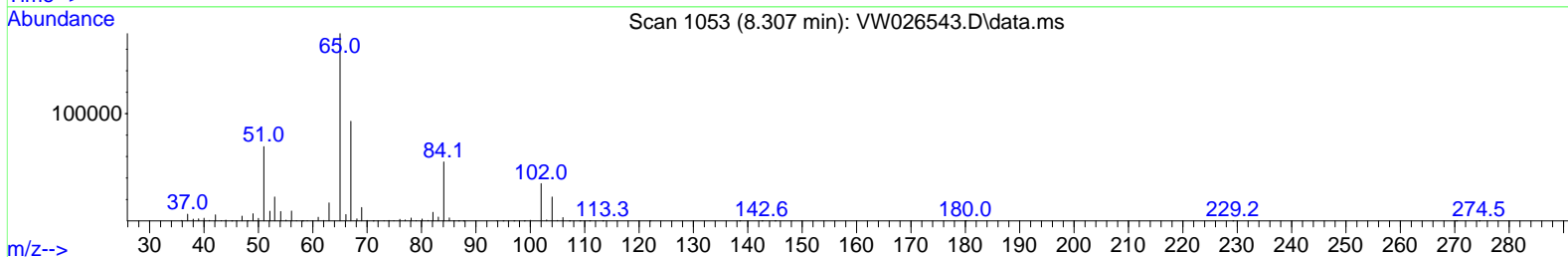
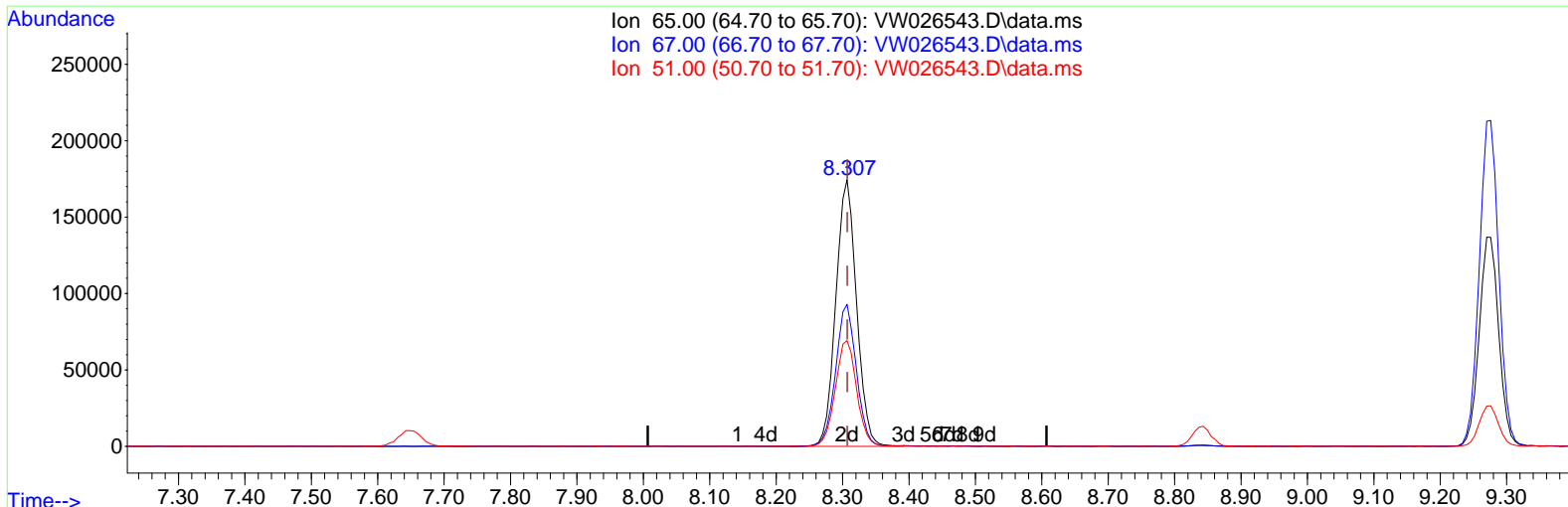
Data Path : Z:\voasrv\HPCHEM1\MSVOA_W\Data\VW070623\
 Data File : VW026543.D
 Acq On : 06 Jul 2023 15:41
 Operator : SY/MD
 Sample : 03534-11
 Misc : 5.15g/10mL/MSVOA_W/SOIL
 ALS Vial : 1 Sample Multiplier: 1

Instrument :
 MSVOA_W
 ClientSampleId :
 A4723

Manual Integrations APPROVED

Quant Time: Jul 07 02:34:54 2023
 Quant Method : Z:\voasrv\HPCHEM1\MSVOA_W\Method\SFAMWLM070323SMA.M
 Quant Title : SFAM01.0
 QLast Update : Tue Jul 04 13:17:14 2023
 Response via : Initial Calibration

Reviewed By : John Carlone 07/07/2023
 Supervised By : Semsettin Yesilyurt 07/07/2023



TIC: VW026543.D\data.ms

(26) 1,2-Dichloroethane-d4 (S)

8.307min (-0.000) 19.17 ug/L m

response 377794

Ion	Exp%	Act%
65.00	100.00	100.00
67.00	52.90	0.02#
51.00	108.40	0.03#
0.00	0.00	0.00

Data Path : Z:\voasrv\HPCHEM1\MSVOA_W\Data\VW070623\
 Data File : VW026543.D
 Acq On : 06 Jul 2023 15:41
 Operator : SY/MD
 Sample : 03534-11
 Misc : 5.15g/10mL/MSVOA_W/SOIL
 ALS Vial : 1 Sample Multiplier: 1

Instrument :
 MSVOA_W
ClientSampleId :
 A4723

Manual IntegrationsAPPROVED

Reviewed By :John Carlone 07/07/2023
 Supervised By :Semsettin Yesilyurt 07/07/2023

Quant Time: Jul 07 02:34:54 2023
 Quant Method : Z:\voasrv\HPCHEM1\MSVOA_W\Method\SFAMWLM070323SMA.M
 Quant Title : SFAM01.0
 QLast Update : Tue Jul 04 13:17:14 2023
 Response via : Initial Calibration

Compound	R.T.	QIon	Response	Conc	Units	Dev(Min)
Internal Standards						
1) 1,4-Difluorobenzene	8.843	114	1150248	25.000	ug/L	0.00
28) Chlorobenzene-d5	11.629	117	1038499	25.000	ug/L	0.00
58) 1,4-Dichlorobenzene-d4	13.556	152	486476	25.000	ug/L	0.00
System Monitoring Compounds						
4) Vinyl Chloride-d3	2.369	65	238218	13.773	ug/L	0.00
Spiked Amount	25.000	Range 30 - 150	Recovery =	55.080%		
7) Chloroethane-d5	2.899	69	207233	14.482	ug/L	0.00
Spiked Amount	25.000	Range 30 - 150	Recovery =	57.920%		
11) 1,1-Dichloroethene-d2	4.021	65	132609	16.438	ug/L	0.00
Spiked Amount	25.000	Range 45 - 110	Recovery =	65.760%		
21) 2-Butanone-d5	7.075	46	245447	37.095	ug/L	0.00
Spiked Amount	50.000	Range 20 - 135	Recovery =	74.200%		
24) Chloroform-d	7.648	84	648942	19.150	ug/L	0.00
Spiked Amount	25.000	Range 40 - 150	Recovery =	76.600%		
26) 1,2-Dichloroethane-d4	8.307	65	377794m	19.168	ug/L	0.00
Spiked Amount	25.000	Range 70 - 130	Recovery =	76.680%		
32) Benzene-d6	8.276	84	1325600	20.020	ug/L	0.00
Spiked Amount	25.000	Range 20 - 135	Recovery =	80.080%		
36) 1,2-Dichloropropane-d6	9.276	67	436139	20.660	ug/L	0.00
Spiked Amount	25.000	Range 70 - 120	Recovery =	82.640%		
41) Toluene-d8	10.318	98	1146816	19.293	ug/L	0.00
Spiked Amount	25.000	Range 30 - 130	Recovery =	77.160%		
43) trans-1,3-Dichloroprop...	10.581	79	169962	19.851	ug/L	0.00
Spiked Amount	25.000	Range 30 - 135	Recovery =	79.400%		
47) 2-Hexanone-d5	10.922	63	165016	39.260	ug/L	0.00
Spiked Amount	50.000	Range 20 - 135	Recovery =	78.520%		
56) 1,1,2,2-Tetrachloroeth...	12.690	84	365423	19.783	ug/L	0.00
Spiked Amount	25.000	Range 45 - 120	Recovery =	79.120%		
66) 1,2-Dichlorobenzene-d4	13.854	152	388042	20.084	ug/L	0.00
Spiked Amount	25.000	Range 75 - 120	Recovery =	80.320%		
Target Compounds						
13) Acetone	4.131	43	14302	3.485	ug/L	74
14) Carbon disulfide	4.393	76	90955	1.974	ug/L	98

(#) = qualifier out of range (m) = manual integration (+) = signals summed

Data Path : Z:\voasrv\HPCHEM1\MSVOA_W\Data\VW070623\
 Data File : VW026543.D
 Acq On : 06 Jul 2023 15:41
 Operator : SY/MD
 Sample : 03534-11
 Misc : 5.15g/10mL/MSVOA_W/SOIL
 ALS Vial : 1 Sample Multiplier: 1

Instrument :
 MSVOA_W
 ClientSampleId :
 A4723

Manual Integrations APPROVED

Quant Time: Jul 07 02:34:54 2023
 Quant Method : Z:\voasrv\HPCHEM1\MSVOA_W\Method\SFAMWLM070323SMA.M
 Quant Title : SFAM01.0
 QLast Update : Tue Jul 04 13:17:14 2023
 Response via : Initial Calibration

Reviewed By : John Carlone 07/07/2023
 Supervised By : Semsettin Yesilyurt 07/07/2023

