

Data Path : Z:\voasrv\HPCHEM1\MSVOA_W\Data\VW070723\
 Data File : VW026570.D
 Acq On : 07 Jul 2023 15:29
 Operator : SY/MD
 Sample : 03551-05MS
 Misc : 8.11g/10mL/MSVOA_W/SOIL
 ALS Vial : 1 Sample Multiplier: 1

Instrument :
 MSVOA_W
 ClientSampleId :
 DCHB3MS

Quant Time: Jul 08 05:40:34 2023
 Quant Method : Z:\voasrv\HPCHEM1\MSVOA_W\Method\SFAMWLM070323SMA.M
 Quant Title : SFAM01.0
 QLast Update : Sat Jul 08 05:36:55 2023
 Response via : Initial Calibration

Compound	R.T.	QIon	Response	Conc	Units	Dev(Min)
Internal Standards						
1) 1,4-Difluorobenzene	8.843	114	31729	25.000	ug/L	0.00
28) Chlorobenzene-d5	11.635	117	20625	25.000	ug/L	0.00
58) 1,4-Dichlorobenzene-d4	13.556	152	7163	25.000	ug/L	0.00
System Monitoring Compounds						
4) Vinyl Chloride-d3	2.350	65	49503	103.757	ug/L	-0.01
Spiked Amount	25.000	Range 30 - 150	Recovery	=	415.040%#	
7) Chloroethane-d5	2.899	69	40210	101.871	ug/L	0.00
Spiked Amount	25.000	Range 30 - 150	Recovery	=	407.480%#	
11) 1,1-Dichloroethene-d2	4.039	65	23477	105.500	ug/L	0.02
Spiked Amount	25.000	Range 45 - 110	Recovery	=	422.000%#	
21) 2-Butanone-d5	7.173	46	276	1.512	ug/L	0.10
Spiked Amount	50.000	Range 20 - 135	Recovery	=	3.020%#	
24) Chloroform-d	7.654	84	69772	74.640	ug/L	0.00
Spiked Amount	25.000	Range 40 - 150	Recovery	=	298.560%#	
26) 1,2-Dichloroethane-d4	8.313	65	21552	39.640	ug/L	0.01
Spiked Amount	25.000	Range 70 - 130	Recovery	=	158.560%#	
32) Benzene-d6	8.276	84	148004	112.549	ug/L	0.00
Spiked Amount	25.000	Range 20 - 135	Recovery	=	450.200%#	
36) 1,2-Dichloropropane-d6	9.276	67	38197	91.105	ug/L	0.00
Spiked Amount	25.000	Range 70 - 120	Recovery	=	364.440%#	
41) Toluene-d8	10.324	98	118794	100.625	ug/L	0.00
Spiked Amount	25.000	Range 30 - 130	Recovery	=	402.520%#	
43) trans-1,3-Dichloroprop...	10.580	79	7819	45.982	ug/L	0.00
Spiked Amount	25.000	Range 30 - 135	Recovery	=	183.920%#	
47) 2-Hexanone-d5	11.080	63	103	1.234	ug/L	0.16
Spiked Amount	50.000	Range 20 - 135	Recovery	=	2.460%#	
56) 1,1,2,2-Tetrachloroeth...	12.690	84	13674	37.273	ug/L	0.00
Spiked Amount	25.000	Range 45 - 120	Recovery	=	149.080%#	
66) 1,2-Dichlorobenzene-d4	13.848	152	16584	58.295	ug/L	0.00
Spiked Amount	25.000	Range 75 - 120	Recovery	=	233.200%#	
Target Compounds						
2) Dichlorodifluoromethane	2.003	85	31620	87.437	ug/L	95
3) Chloromethane	2.210	50	23672	40.479	ug/L	94
5) Vinyl chloride	2.369	62	33708	58.526	ug/L	99
6) Bromomethane	2.795	94	13565	40.340	ug/L	98
8) Chloroethane	2.936	64	17945	51.724	ug/L	99
9) Trichlorofluoromethane	3.277	101	41942	113.287	ug/L	100
10) 1,1,2-Trichloro-1,2,2-...	4.082	101	28447	65.716	ug/L #	84
12) 1,1-Dichloroethene	4.057	96	21774	54.384	ug/L	86
13) Acetone	4.124	43	190353	1681.588	ug/L	100
14) Carbon disulfide	4.399	76	65314	51.386	ug/L	100
15) Methyl Acetate	4.661	43	253	0.898	ug/L #	58
16) Methylene chloride	4.929	84	17763	31.414	ug/L	88
17) trans-1,2-Dichloroethene	5.435	96	19198	42.608	ug/L	91
18) Methyl tert-butyl Ether	5.417	73	4751	6.031	ug/L #	91
19) 1,1-Dichloroethane	6.221	63	34507	35.563	ug/L	100
20) cis-1,2-Dichloroethene	7.179	96	15059	29.131	ug/L	91
22) 2-Butanone	7.179	43	9124	43.306	ug/L	94
23) Bromochloromethane	7.526	128	4282	20.001	ug/L #	72
25) Chloroform	7.685	83	28493	32.768	ug/L	100

Data Path : Z:\voasrv\HPCHEM1\MSVOA_W\Data\VW070723\
 Data File : VW026570.D
 Acq On : 07 Jul 2023 15:29
 Operator : SY/MD
 Sample : 03551-05MS
 Misc : 8.11g/10mL/MSVOA_W/SOIL
 ALS Vial : 1 Sample Multiplier: 1

Instrument :
 MSVOA_W
 ClientSampleId :
 DCHB3MS

Quant Time: Jul 08 05:40:34 2023
 Quant Method : Z:\voasrv\HPCHEM1\MSVOA_W\Method\SFAMWLM070323SMA.M
 Quant Title : SFAM01.0
 QLast Update : Sat Jul 08 05:36:55 2023
 Response via : Initial Calibration

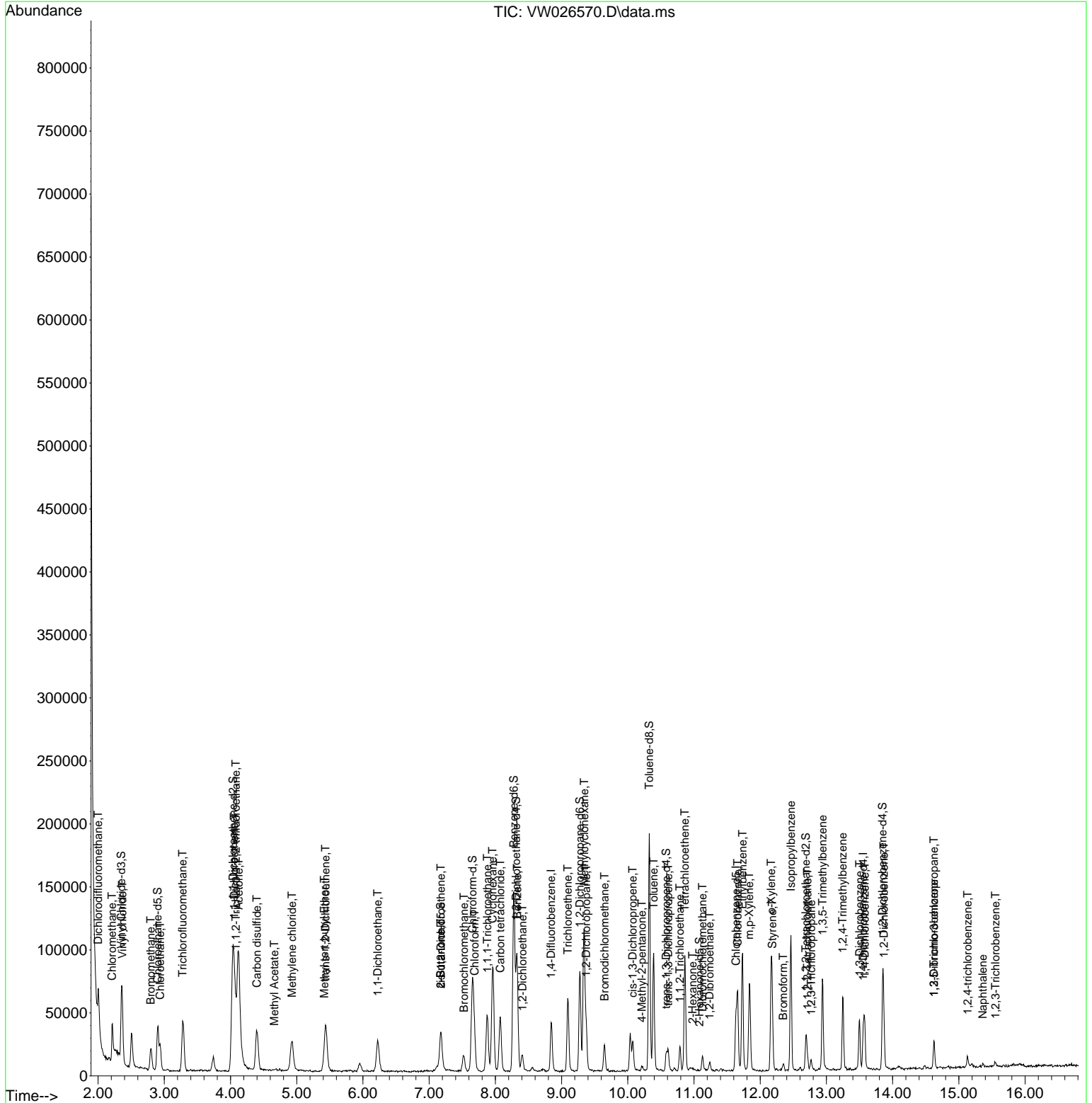
Compound	R.T.	QIon	Response	Conc	Units	Dev(Min)
27) 1,2-Dichloroethane	8.410	62	10938	17.071	ug/L #	88
29) Cyclohexane	7.959	56	42872	74.613	ug/L	97
30) 1,1,1-Trichloroethane	7.880	97	34663	74.697	ug/L	99
31) Carbon tetrachloride	8.075	117	31081	74.290	ug/L	99
33) Benzene	8.331	78	77511	58.030	ug/L	100
34) Trichloroethene	9.093	95	21244	62.357	ug/L	93
35) Methylcyclohexane	9.343	83	38328	65.864	ug/L	92
37) 1,2-Dichloropropane	9.373	63	15188	41.505	ug/L	98
38) Bromodichloromethane	9.648	83	14485	33.547	ug/L #	96
39) cis-1,3-Dichloropropene	10.074	75	13870	25.706	ug/L	98
40) 4-Methyl-2-pentanone	10.215	43	2880	10.171	ug/L #	74
42) Toluene	10.391	91	66621	49.002	ug/L	98
44) trans-1,3-Dichloropropene	10.611	75	8911	19.706	ug/L	100
45) 1,1,2-Trichloroethane	10.788	97	5730	21.302	ug/L	93
46) Tetrachloroethene	10.861	164	20453	85.556	ug/L	83
48) 2-Hexanone	10.977	43	702	3.555	ug/L #	47
49) Dibromochloromethane	11.129	129	5926	21.988	ug/L	98
50) 1,2-Dibromoethane	11.233	107	4221	17.111	ug/L #	97
51) Chlorobenzene	11.660	112	30382	34.189	ug/L	92
52) Ethylbenzene	11.733	91	63378	39.476	ug/L	99
53) m,p-Xylene	11.836	106	22477	38.289	ug/L	86
54) o-Xylene	12.166	106	18604	32.709	ug/L	84
55) Styrene	12.184	104	24821	25.519	ug/L	92
57) 1,1,2,2-Tetrachloroethane	12.714	83	5125	14.553	ug/L #	97
59) Bromoform	12.348	173	2717	24.180	ug/L #	93
60) Isopropylbenzene	12.464	105	64242	58.475	ug/L	98
61) 1,2,3-Trichloropropane	12.769	75	3598	19.280	ug/L	96
62) 1,3,5-Trimethylbenzene	12.940	105	37538	41.440	ug/L	99
63) 1,2,4-Trimethylbenzene	13.245	105	30494	34.995	ug/L	98
64) 1,3-Dichlorobenzene	13.501	146	15603	33.382	ug/L	85
65) 1,4-Dichlorobenzene	13.580	146	13937	29.904	ug/L	96
67) 1,2-Dichlorobenzene	13.866	146	10425	23.676	ug/L #	88
68) 1,2-Dibromo-3-chloropr...	14.622	75	1736	36.888	ug/L #	7
69) 1,3,5-Trichlorobenzene	14.622	180	6016	19.350	ug/L	99
70) 1,2,4-trichlorobenzene	15.135	180	2222	8.761	ug/L	94
71) Naphthalene	15.360	128	880	1.550	ug/L #	82
72) 1,2,3-Trichlorobenzene	15.555	180	743	3.279	ug/L #	72

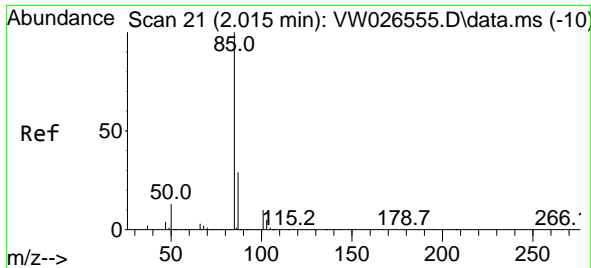
(#) = qualifier out of range (m) = manual integration (+) = signals summed

Data Path : Z:\voasrv\HPCHEM1\MSVOA_W\Data\VW070723\
 Data File : VW026570.D
 Acq On : 07 Jul 2023 15:29
 Operator : SY/MD
 Sample : 03551-05MS
 Misc : 8.11g/10mL/MSVOA_W/SOIL
 ALS Vial : 1 Sample Multiplier: 1

Instrument :
 MSVOA_W
ClientSampleId :
 DCHB3MS

Quant Time: Jul 08 05:40:34 2023
 Quant Method : Z:\voasrv\HPCHEM1\MSVOA_W\Method\SFAMWLM070323SMA.M
 Quant Title : SFAM01.0
 QLast Update : Sat Jul 08 05:36:55 2023
 Response via : Initial Calibration

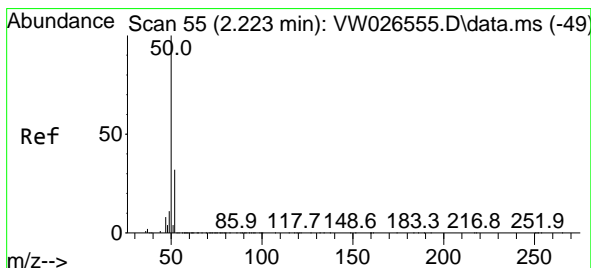
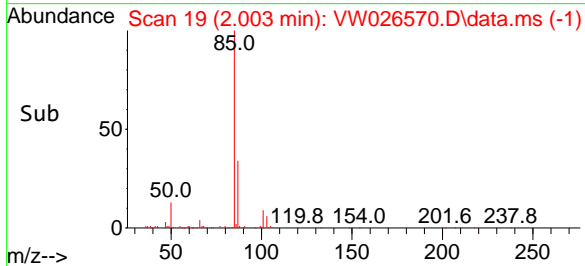
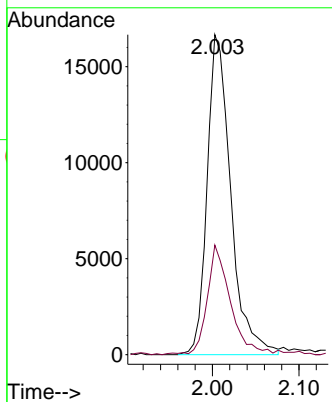
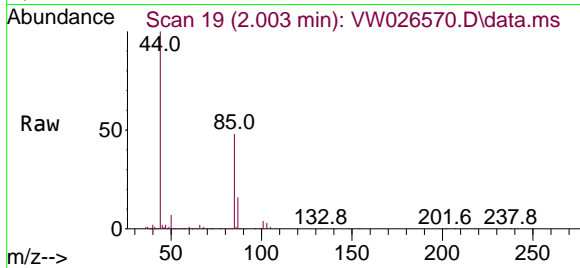




#2
 Dichlorodifluoromethane
 Concen: 87.437 ug/L
 RT: 2.003 min Scan# 19
 Delta R.T. -0.013 min
 Lab File: VW026570.D
 Acq: 07 Jul 2023 15:29

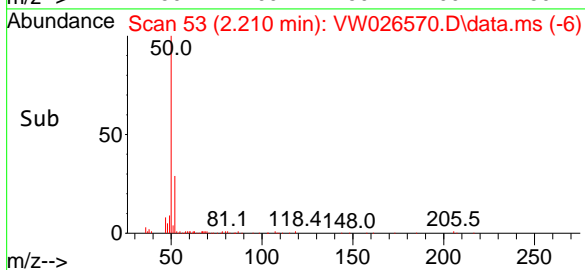
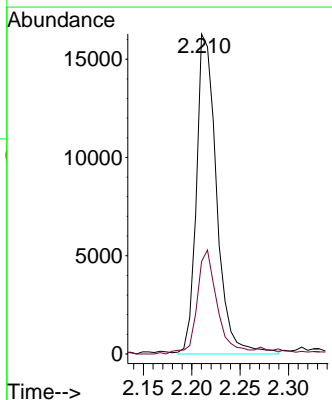
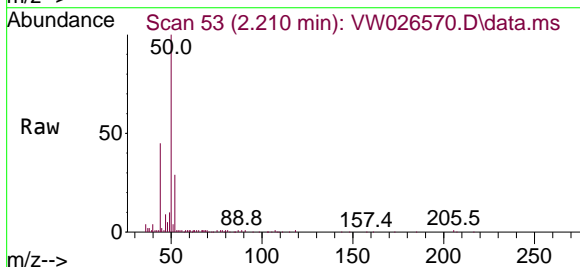
Instrument :
 MSVOA_W
 ClientSampleId :
 DCHB3MS

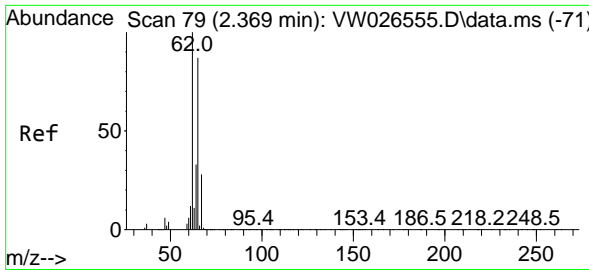
Tgt Ion: 85 Resp: 31620
 Ion Ratio Lower Upper
 85 100
 87 32.6 23.8 35.8



#3
 Chloromethane
 Concen: 40.479 ug/L
 RT: 2.210 min Scan# 53
 Delta R.T. -0.013 min
 Lab File: VW026570.D
 Acq: 07 Jul 2023 15:29

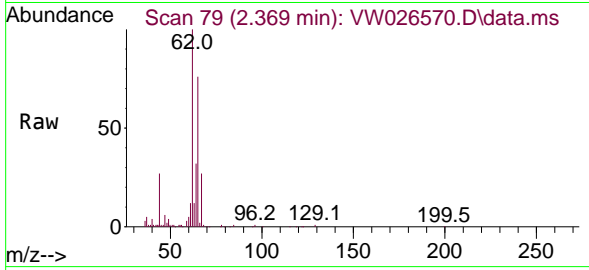
Tgt Ion: 50 Resp: 23672
 Ion Ratio Lower Upper
 50 100
 52 28.9 22.7 42.1



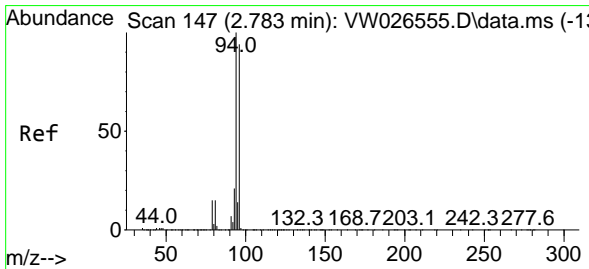
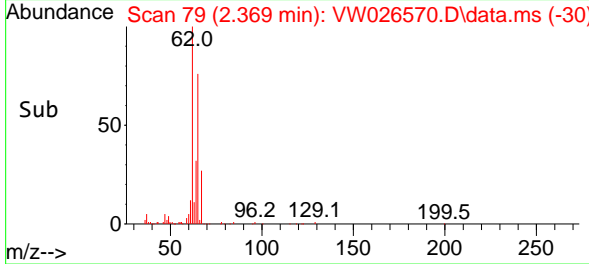
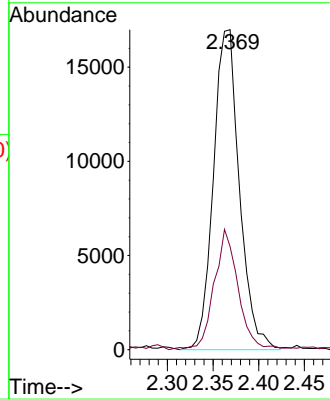


#5
 Vinyl chloride
 Concen: 58.526 ug/L
 RT: 2.369 min Scan# 79
 Delta R.T. -0.000 min
 Lab File: VW026570.D
 Acq: 07 Jul 2023 15:29

Instrument :
 MSVOA_W
 ClientSampleId :
 DCHB3MS

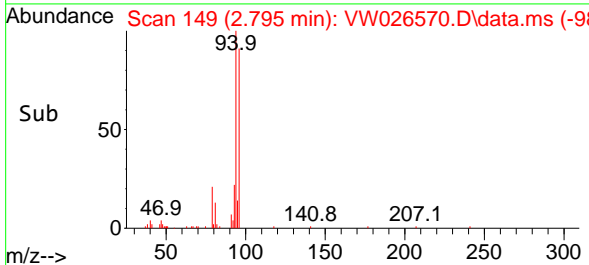
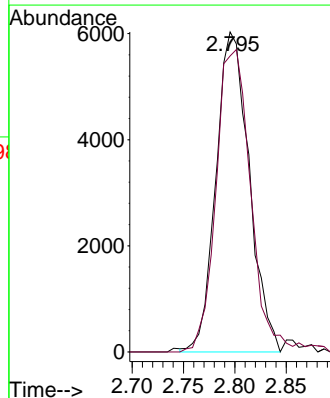
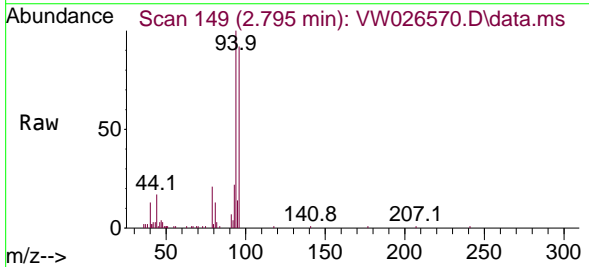


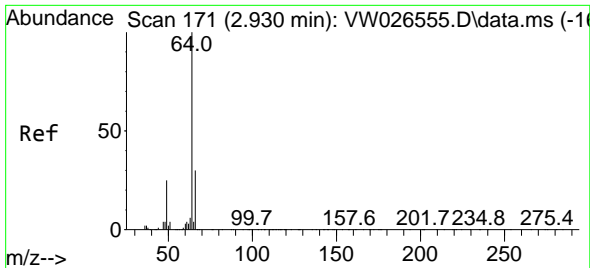
Tgt Ion: 62 Resp: 33708
 Ion Ratio Lower Upper
 62 100
 64 32.2 22.1 41.1



#6
 Bromomethane
 Concen: 40.340 ug/L
 RT: 2.795 min Scan# 149
 Delta R.T. 0.012 min
 Lab File: VW026570.D
 Acq: 07 Jul 2023 15:29

Tgt Ion: 94 Resp: 13565
 Ion Ratio Lower Upper
 94 100
 96 92.5 66.3 123.1

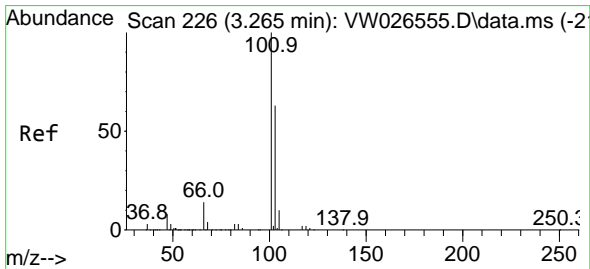
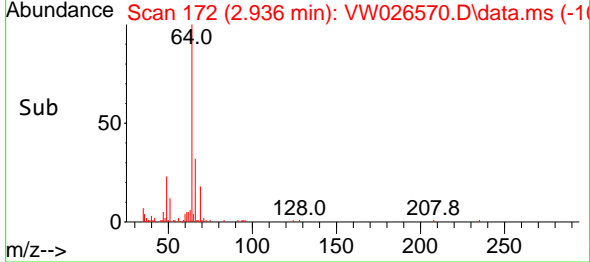
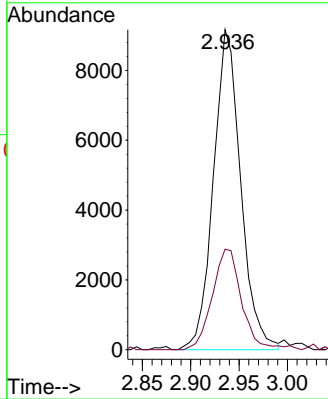
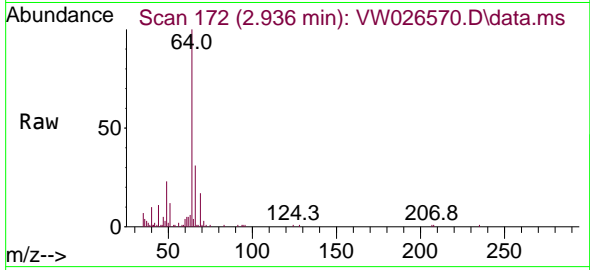




#8
 Chloroethane
 Concen: 51.724 ug/L
 RT: 2.936 min Scan# 171
 Delta R.T. 0.006 min
 Lab File: VW026570.D
 Acq: 07 Jul 2023 15:29

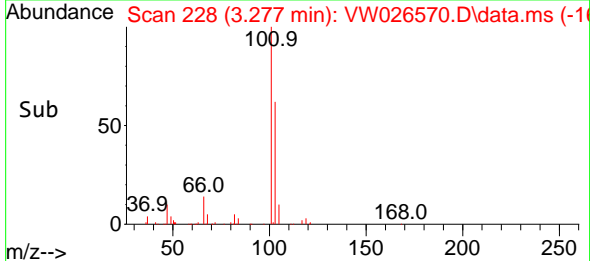
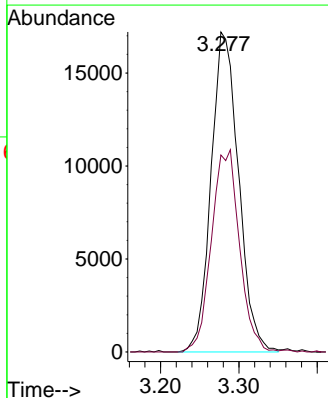
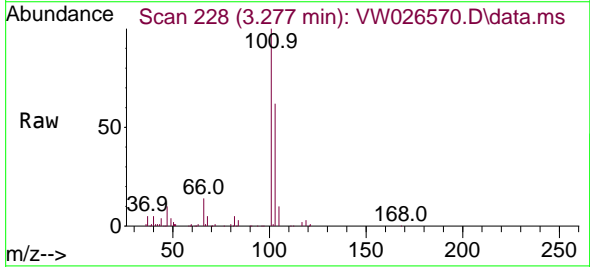
Instrument : MSVOA_W
 ClientSampleId : DCHB3MS

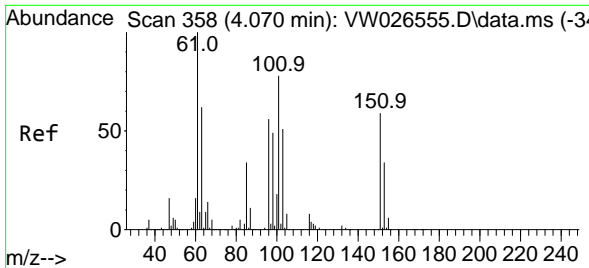
Tgt Ion: 64 Resp: 17945
 Ion Ratio Lower Upper
 64 100
 66 31.4 21.6 40.2



#9
 Trichlorofluoromethane
 Concen: 113.287 ug/L
 RT: 3.277 min Scan# 228
 Delta R.T. 0.012 min
 Lab File: VW026570.D
 Acq: 07 Jul 2023 15:29

Tgt Ion: 101 Resp: 41942
 Ion Ratio Lower Upper
 101 100
 103 64.5 51.8 77.8

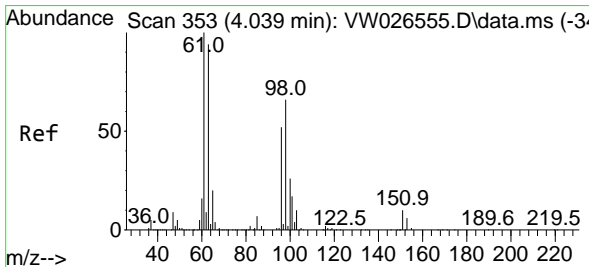
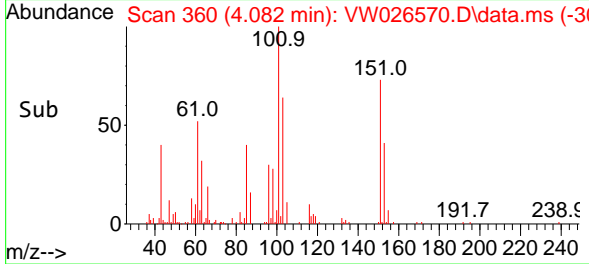
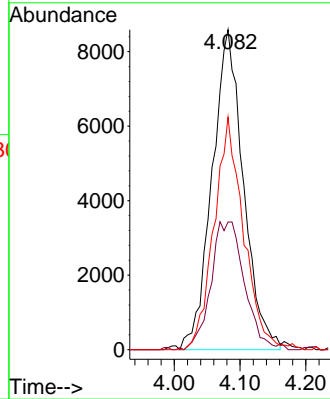
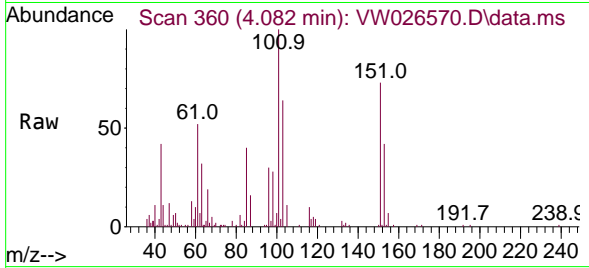




#10
 1,1,2-Trichloro-1,2,2-trifluoroethane
 Concen: 65.716 ug/L
 RT: 4.082 min Scan# 306
 Delta R.T. 0.012 min
 Lab File: VW026570.D
 Acq: 07 Jul 2023 15:29

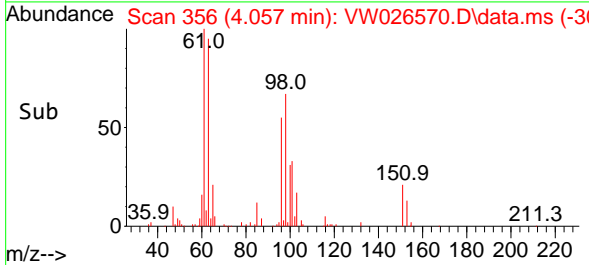
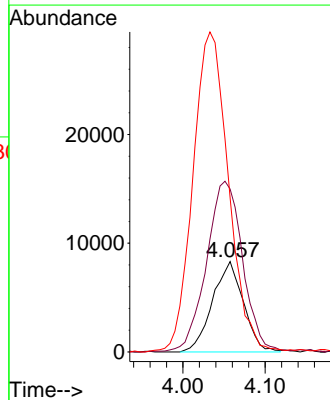
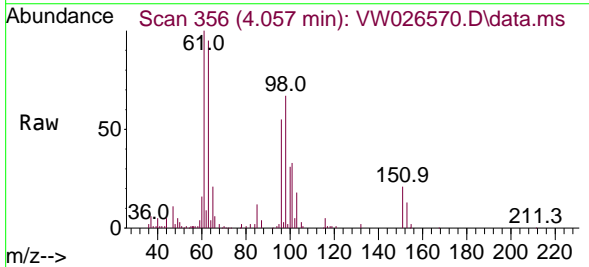
Instrument :
 MSVOA_W
 ClientSampleId :
 DCHB3MS

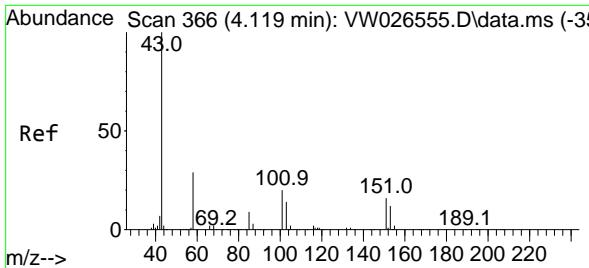
Tgt Ion	Resp	Lower	Upper
101	28447		
101	100		
85	19.1	35.4	53.0#
151	68.4	55.2	82.8



#12
 1,1-Dichloroethene
 Concen: 54.384 ug/L
 RT: 4.057 min Scan# 356
 Delta R.T. 0.018 min
 Lab File: VW026570.D
 Acq: 07 Jul 2023 15:29

Tgt Ion	Resp	Lower	Upper
96	21774		
96	100		
61	180.2	142.9	265.5
63	170.4	132.7	246.5

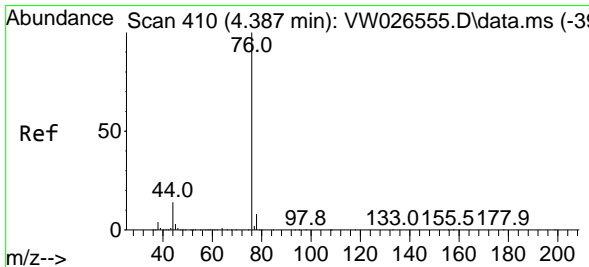
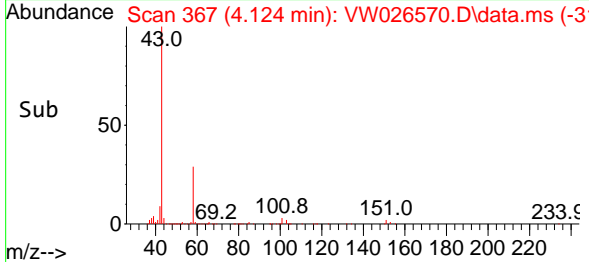
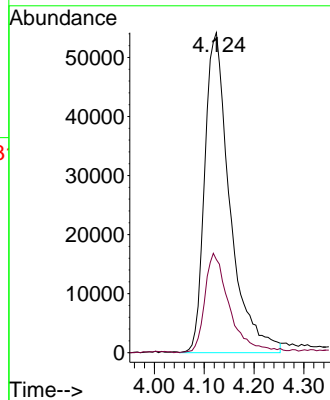
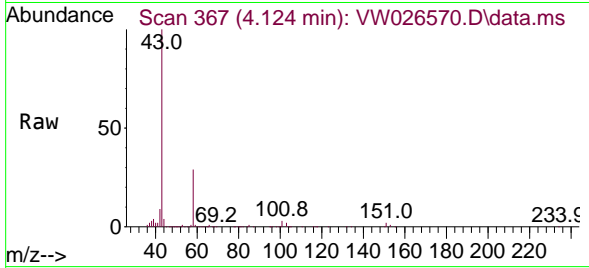




#13
 Acetone
 Concen: 1681.588 ug/L
 RT: 4.124 min Scan# 30
 Delta R.T. 0.006 min
 Lab File: VW026570.D
 Acq: 07 Jul 2023 15:29

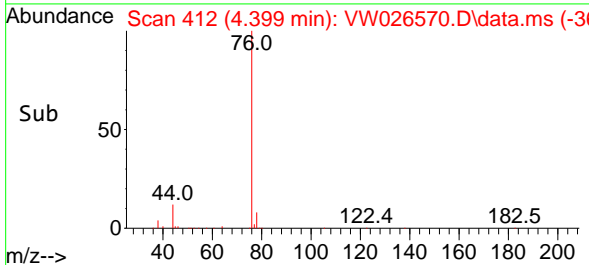
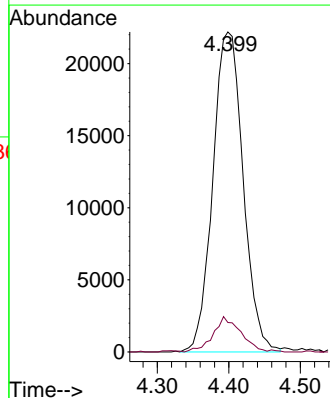
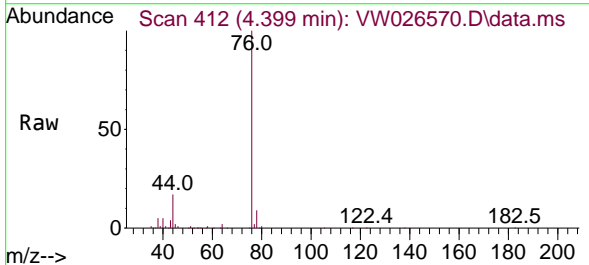
Instrument :
 MSVOA_W
 ClientSampleId :
 DCHB3MS

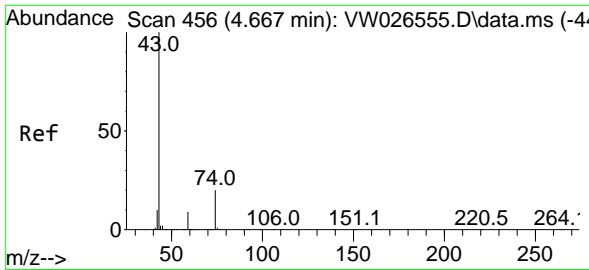
Tgt Ion: 43 Resp: 190353
 Ion Ratio Lower Upper
 43 100
 58 29.9 0.0 59.6



#14
 Carbon disulfide
 Concen: 51.386 ug/L
 RT: 4.399 min Scan# 412
 Delta R.T. 0.012 min
 Lab File: VW026570.D
 Acq: 07 Jul 2023 15:29

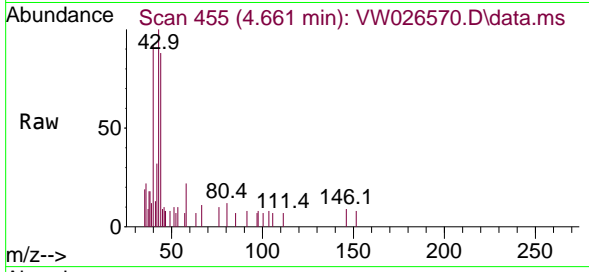
Tgt Ion: 76 Resp: 65314
 Ion Ratio Lower Upper
 76 100
 78 9.2 7.2 10.8



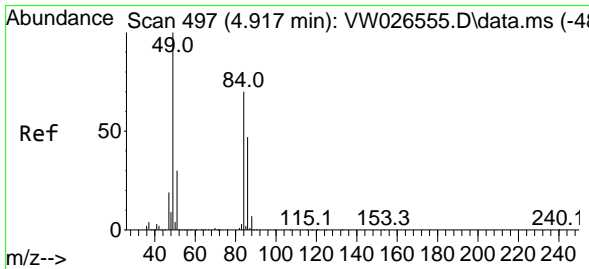
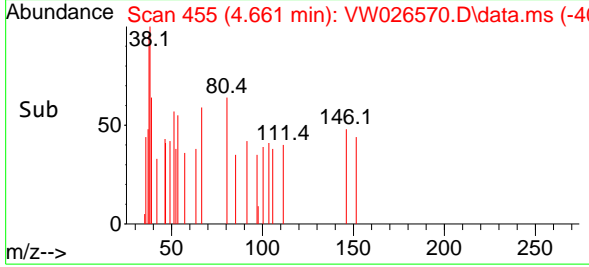
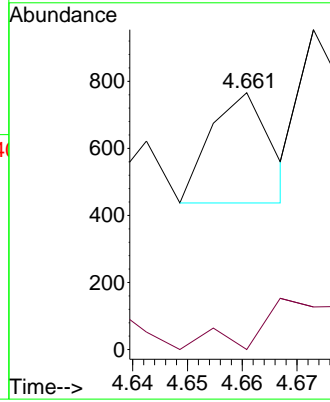


#15
 Methyl Acetate
 Concen: 0.898 ug/L
 RT: 4.661 min Scan# 411
 Delta R.T. -0.006 min
 Lab File: VW026570.D
 Acq: 07 Jul 2023 15:29

Instrument :
 MSVOA_W
 ClientSampleId :
 DCHB3MS

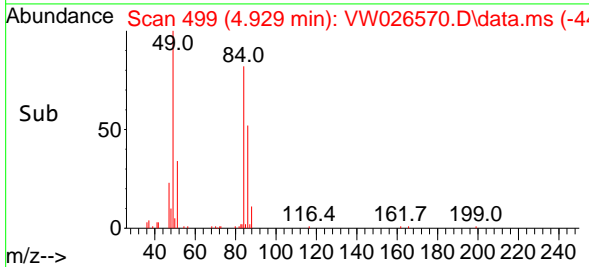
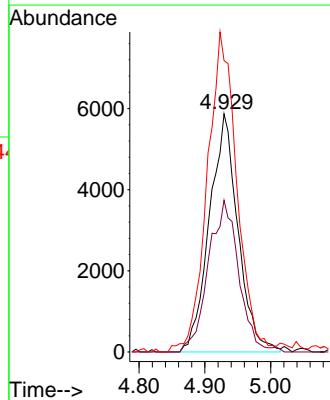
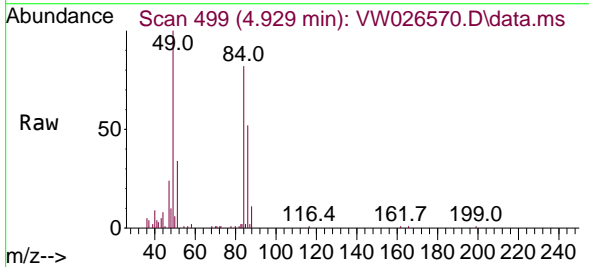


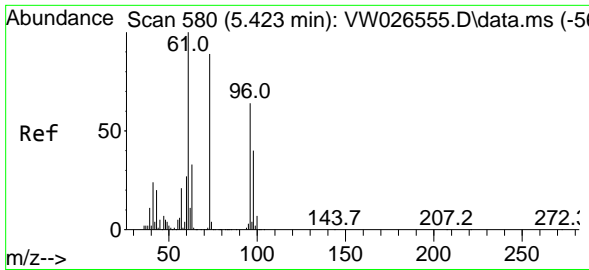
Tgt Ion: 43 Resp: 253
 Ion Ratio Lower Upper
 43 100
 74 40.3 16.6 24.8#



#16
 Methylene chloride
 Concen: 31.414 ug/L
 RT: 4.929 min Scan# 499
 Delta R.T. 0.012 min
 Lab File: VW026570.D
 Acq: 07 Jul 2023 15:29

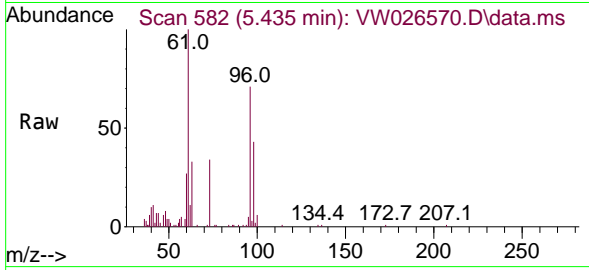
Tgt Ion: 84 Resp: 17763
 Ion Ratio Lower Upper
 84 100
 86 63.7 43.3 80.5
 49 122.4 99.3 184.3





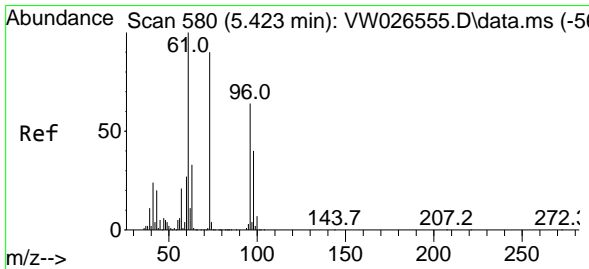
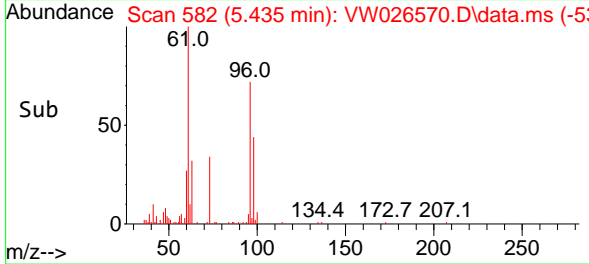
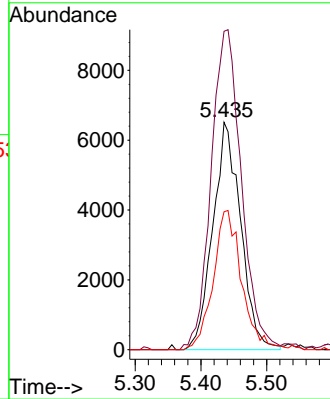
#17
 trans-1,2-Dichloroethene
 Concen: 42.608 ug/L
 RT: 5.435 min Scan# 519
 Delta R.T. 0.012 min
 Lab File: VW026570.D
 Acq: 07 Jul 2023 15:29

Instrument : MSVOA_W
 ClientSampleId : DCHB3MS

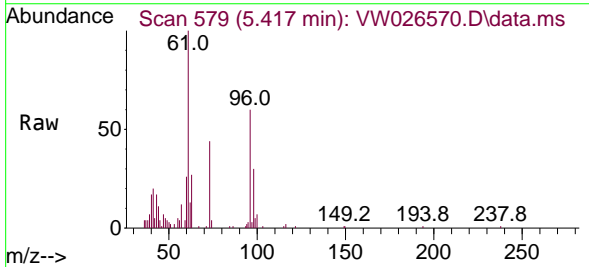


Tgt Ion: 96 Resp: 19198

Ion	Ratio	Lower	Upper
96	100		
61	140.0	109.7	203.7
98	60.7	42.5	78.9

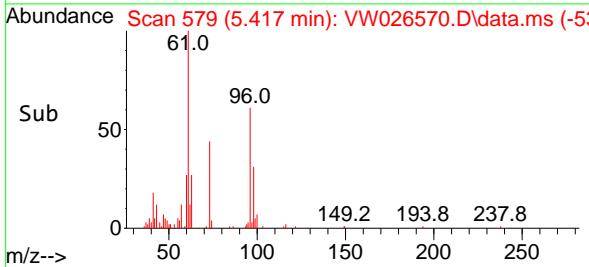
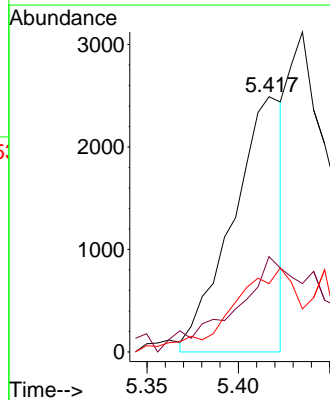


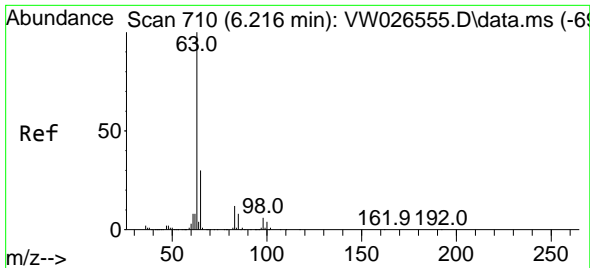
#18
 Methyl tert-butyl Ether
 Concen: 6.031 ug/L
 RT: 5.417 min Scan# 579
 Delta R.T. -0.006 min
 Lab File: VW026570.D
 Acq: 07 Jul 2023 15:29



Tgt Ion: 73 Resp: 4751

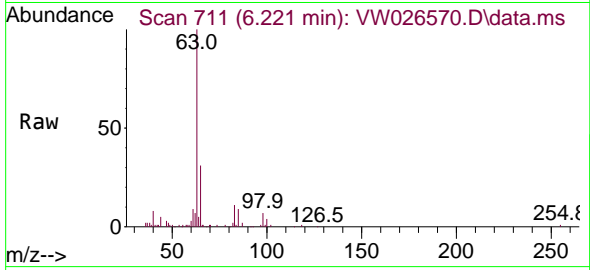
Ion	Ratio	Lower	Upper
73	100		
43	19.8	17.8	26.8
57	17.8	18.8	28.2





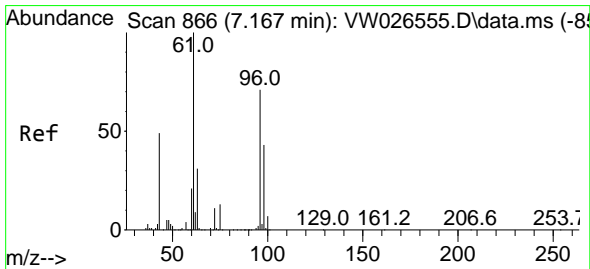
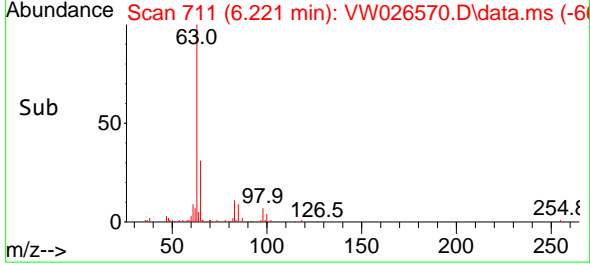
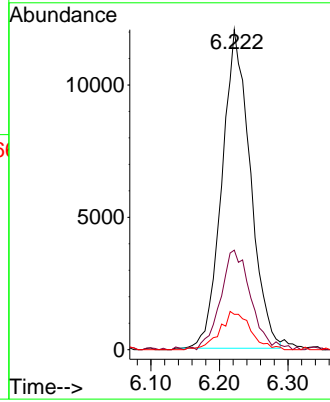
#19
 1,1-Dichloroethane
 Concen: 35.563 ug/L
 RT: 6.221 min Scan# 711
 Delta R.T. 0.006 min
 Lab File: VW026570.D
 Acq: 07 Jul 2023 15:29

Instrument : MSVOA_W
 ClientSampleId : DCHB3MS



Tgt Ion: 63 Resp: 34507

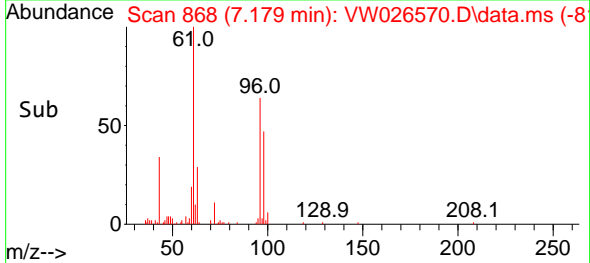
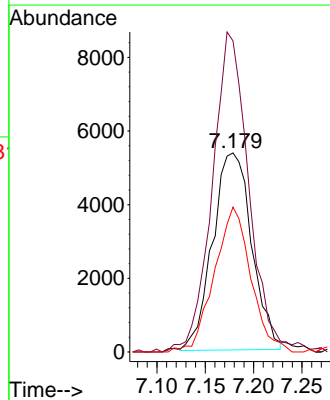
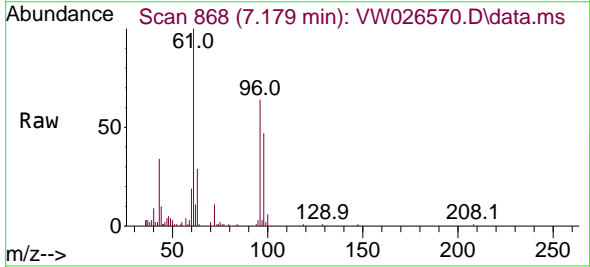
Ion	Ratio	Lower	Upper
63	100		
65	31.1	21.8	40.4
83	12.0	8.6	16.0

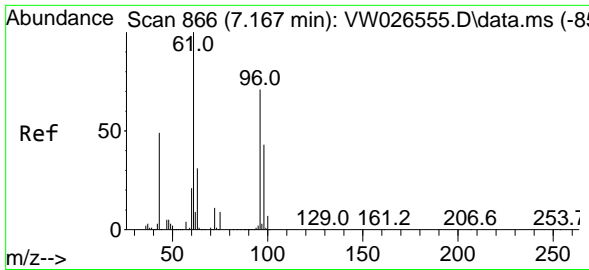


#20
 cis-1,2-Dichloroethene
 Concen: 29.131 ug/L
 RT: 7.179 min Scan# 868
 Delta R.T. 0.012 min
 Lab File: VW026570.D
 Acq: 07 Jul 2023 15:29

Tgt Ion: 96 Resp: 15059

Ion	Ratio	Lower	Upper
96	100		
61	156.3	101.9	189.3
98	72.7	45.9	85.3

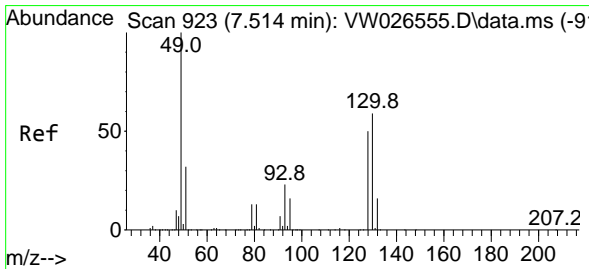
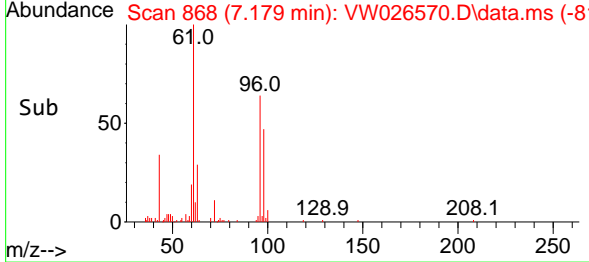
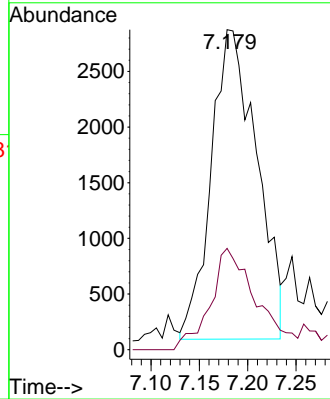
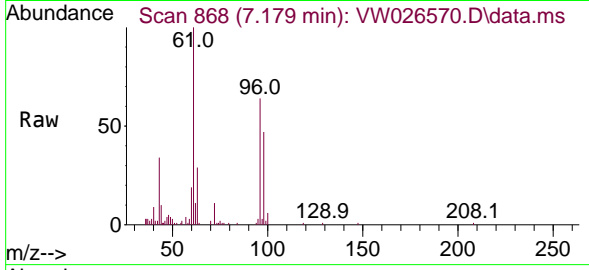




#22
 2-Butanone
 Concen: 43.306 ug/L
 RT: 7.179 min Scan# 868
 Delta R.T. 0.012 min
 Lab File: VW026570.D
 Acq: 07 Jul 2023 15:29

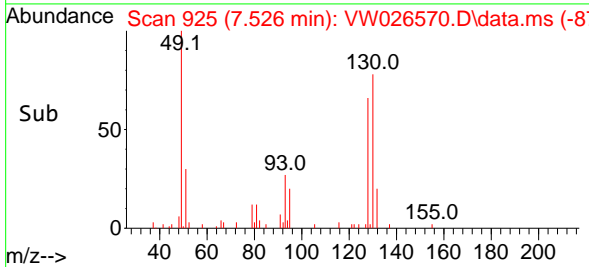
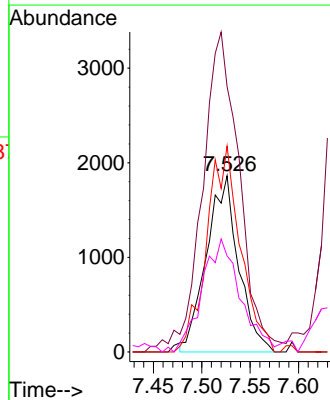
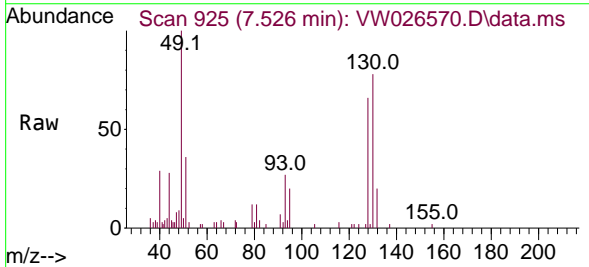
Instrument : MSVOA_W
 ClientSampleId : DCHB3MS

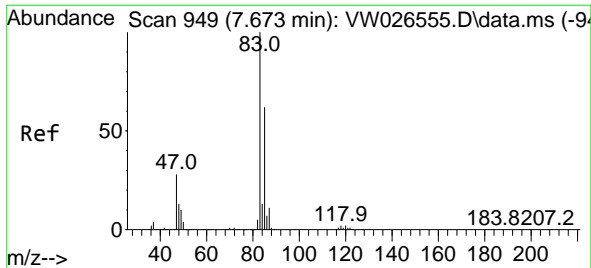
Tgt Ion: 43 Resp: 9124
 Ion Ratio Lower Upper
 43 100
 72 27.0 12.0 36.1



#23
 Bromochloromethane
 Concen: 20.001 ug/L
 RT: 7.526 min Scan# 925
 Delta R.T. 0.012 min
 Lab File: VW026570.D
 Acq: 07 Jul 2023 15:29

Tgt Ion: 128 Resp: 4282
 Ion Ratio Lower Upper
 128 100
 49 150.7 152.2 282.7#
 130 117.0 89.2 165.8
 51 54.5 54.5 81.7

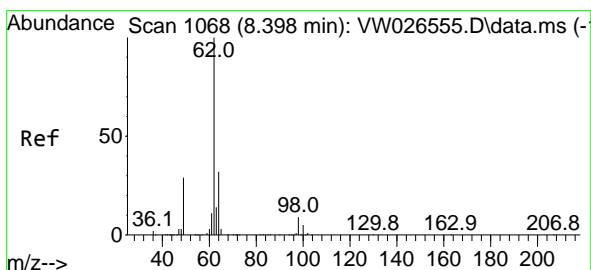
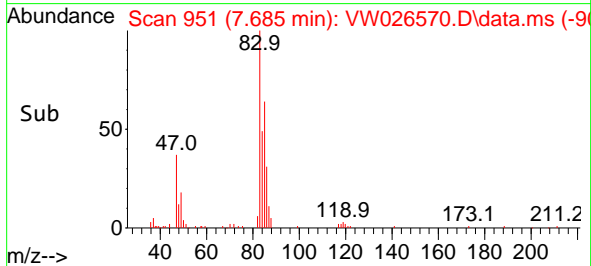
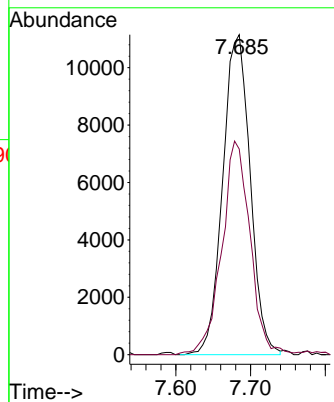
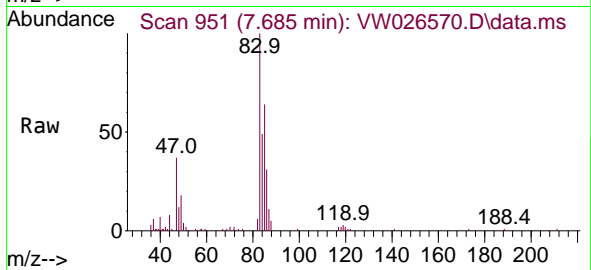




#25
 Chloroform
 Concen: 32.768 ug/L
 RT: 7.685 min Scan# 91
 Delta R.T. 0.012 min
 Lab File: VW026570.D
 Acq: 07 Jul 2023 15:29

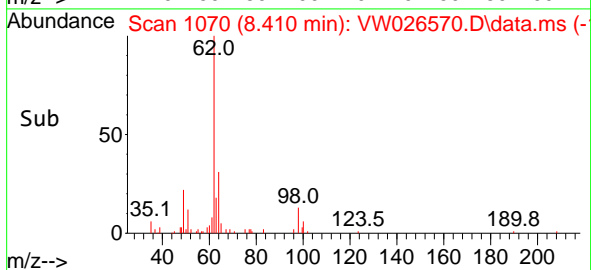
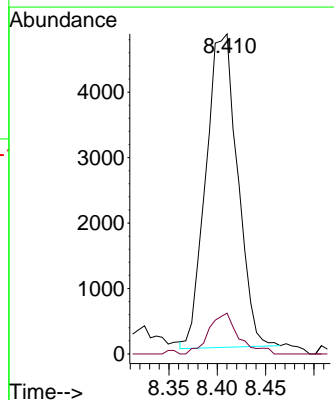
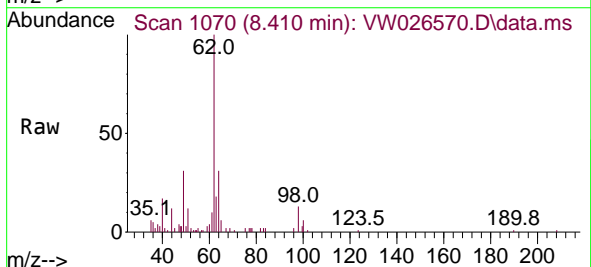
Instrument :
 MSVOA_W
 ClientSampleId :
 DCHB3MS

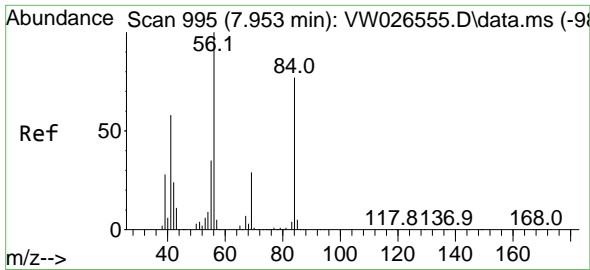
Tgt Ion: 83 Resp: 28493
 Ion Ratio Lower Upper
 83 100
 85 64.2 44.8 83.2



#27
 1,2-Dichloroethane
 Concen: 17.071 ug/L
 RT: 8.410 min Scan# 1070
 Delta R.T. 0.012 min
 Lab File: VW026570.D
 Acq: 07 Jul 2023 15:29

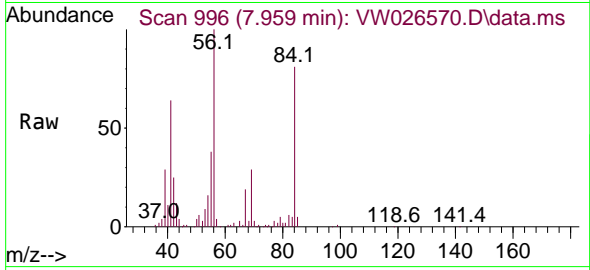
Tgt Ion: 62 Resp: 10938
 Ion Ratio Lower Upper
 62 100
 98 12.7 6.8 10.2#





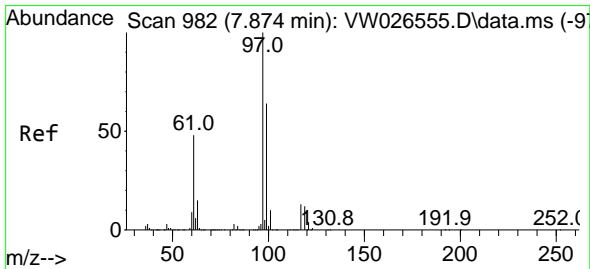
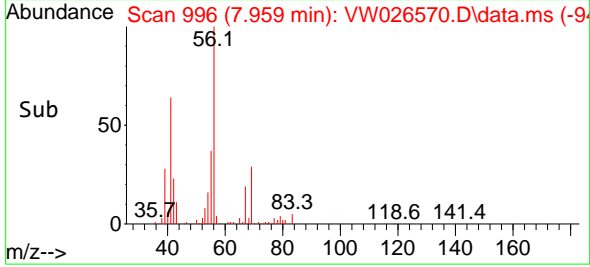
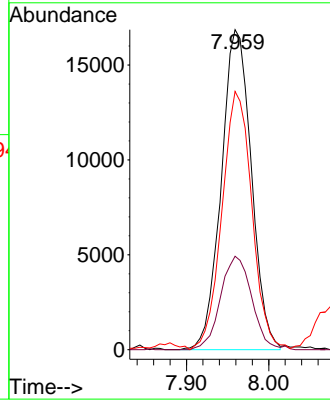
#29
 Cyclohexane
 Concen: 74.613 ug/L
 RT: 7.959 min Scan# 996
 Delta R.T. 0.006 min
 Lab File: VW026570.D
 Acq: 07 Jul 2023 15:29

Instrument :
 MSVOA_W
 ClientSampleId :
 DCHB3MS



Tgt Ion: 56 Resp: 42872

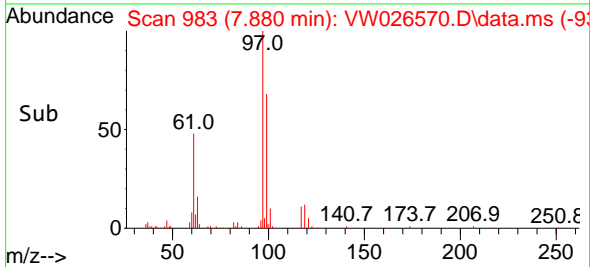
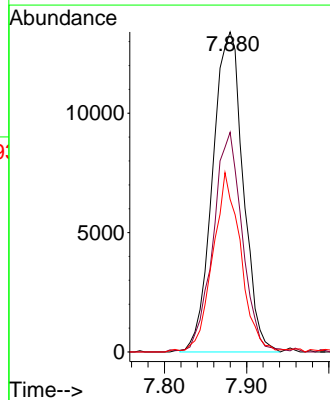
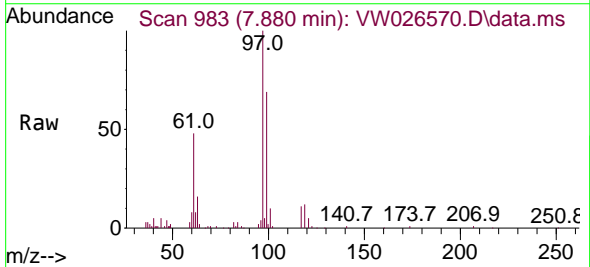
Ion	Ratio	Lower	Upper
56	100		
69	30.1	22.9	34.3
84	80.2	62.5	93.7

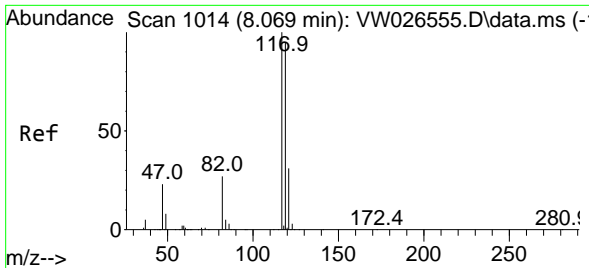


#30
 1,1,1-Trichloroethane
 Concen: 74.697 ug/L
 RT: 7.880 min Scan# 983
 Delta R.T. 0.006 min
 Lab File: VW026570.D
 Acq: 07 Jul 2023 15:29

Tgt Ion: 97 Resp: 34663

Ion	Ratio	Lower	Upper
97	100		
99	65.4	52.2	78.2
61	51.1	40.2	60.2

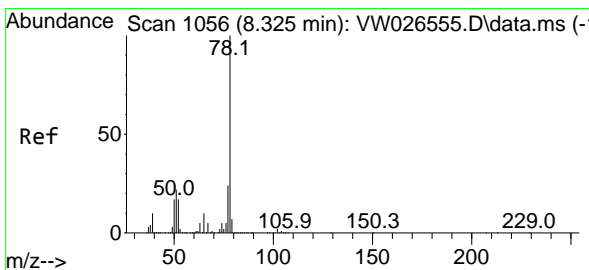
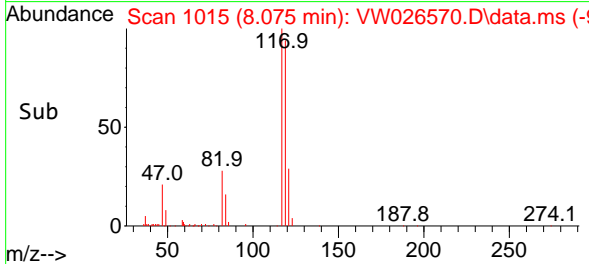
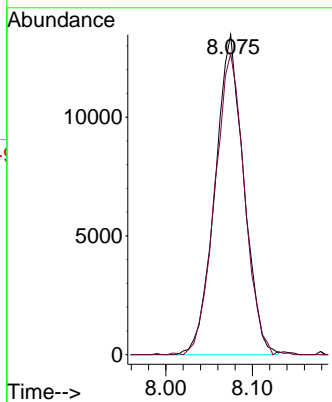
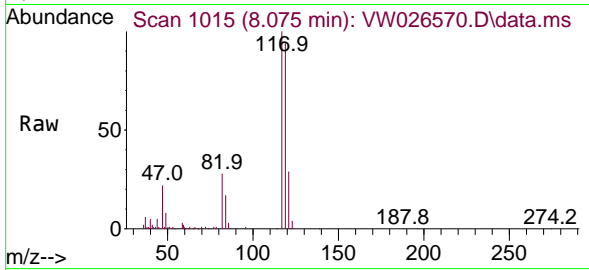




#31
 Carbon tetrachloride
 Concen: 74.290 ug/L
 RT: 8.075 min Scan# 1015
 Delta R.T. 0.006 min
 Lab File: VW026570.D
 Acq: 07 Jul 2023 15:29

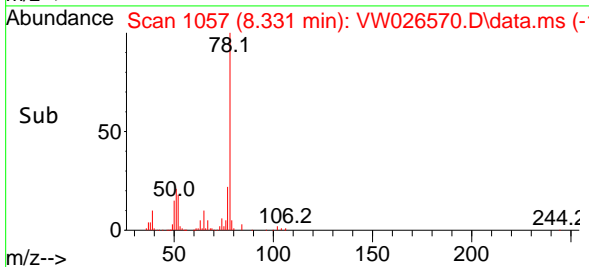
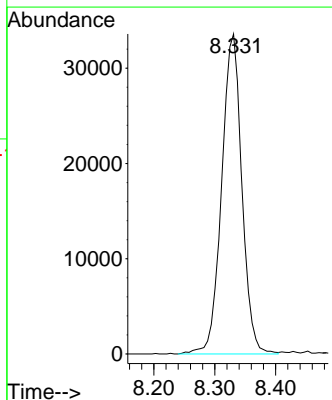
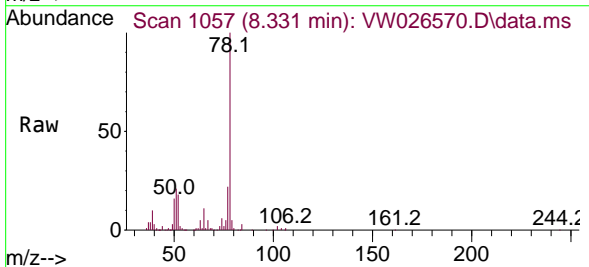
Instrument : MSVOA_W
 ClientSampleId : DCHB3MS

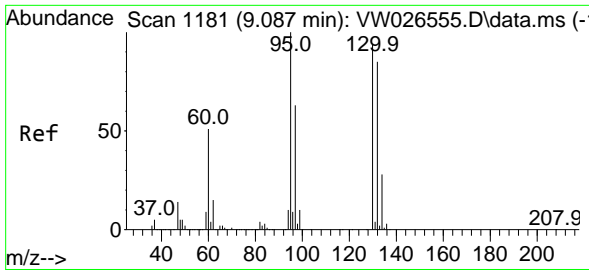
Tgt Ion:117 Resp: 31081
 Ion Ratio Lower Upper
 117 100
 119 96.8 76.3 114.5



#33
 Benzene
 Concen: 58.030 ug/L
 RT: 8.331 min Scan# 1057
 Delta R.T. 0.006 min
 Lab File: VW026570.D
 Acq: 07 Jul 2023 15:29

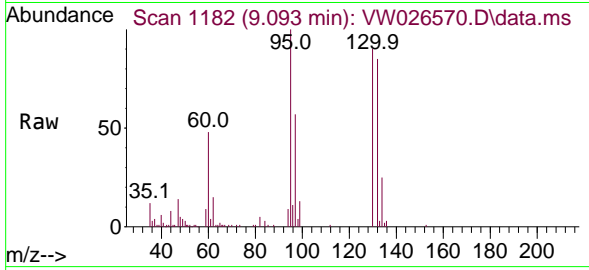
Tgt Ion: 78 Resp: 77511





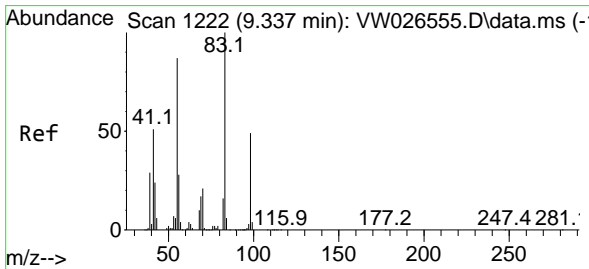
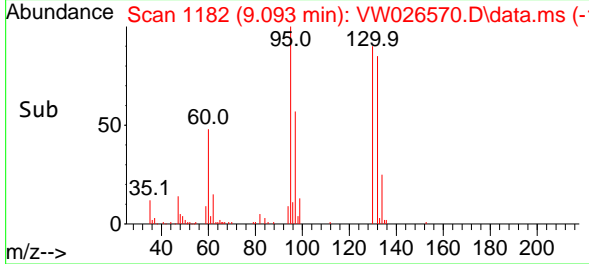
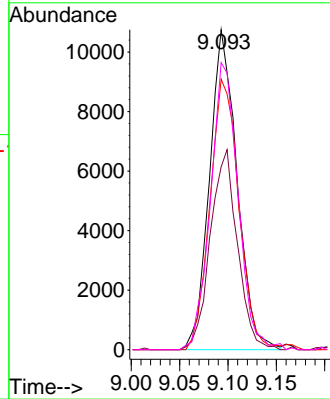
#34
 Trichloroethene
 Concen: 62.357 ug/L
 RT: 9.093 min Scan# 1182
 Delta R.T. 0.006 min
 Lab File: VW026570.D
 Acq: 07 Jul 2023 15:29

Instrument : MSVOA_W
 ClientSampleId : DCHB3MS



Tgt Ion: 95 Resp: 21244

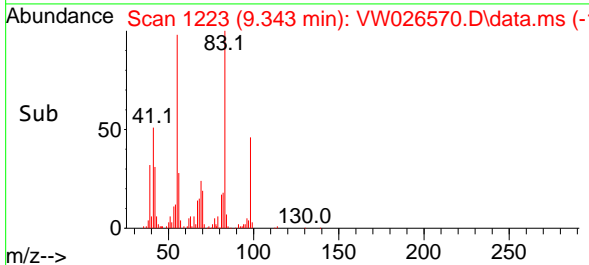
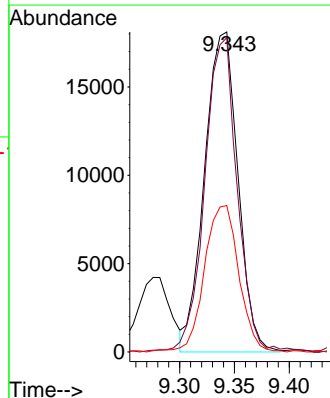
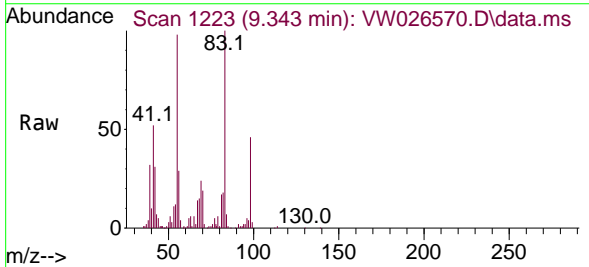
Ion	Ratio	Lower	Upper
95	100		
97	57.2	45.1	83.7
132	84.6	63.2	117.4
130	89.7	68.0	126.4

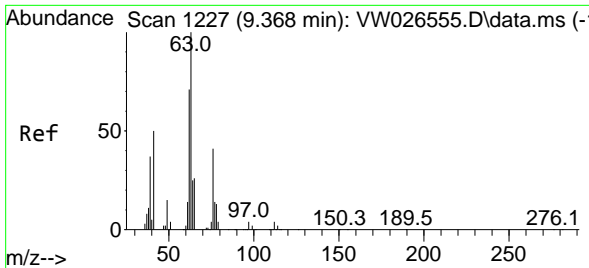


#35
 Methylcyclohexane
 Concen: 65.864 ug/L
 RT: 9.343 min Scan# 1223
 Delta R.T. 0.006 min
 Lab File: VW026570.D
 Acq: 07 Jul 2023 15:29

Tgt Ion: 83 Resp: 38328

Ion	Ratio	Lower	Upper
83	100		
55	95.4	67.5	101.3
98	46.9	37.3	55.9

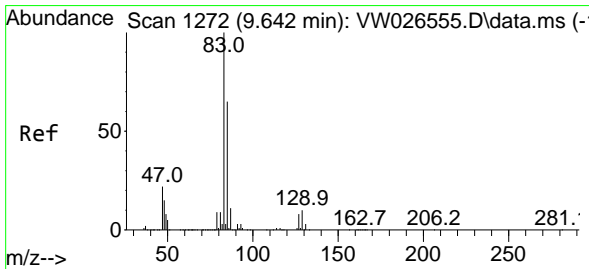
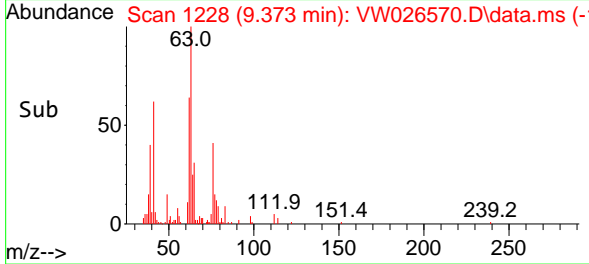
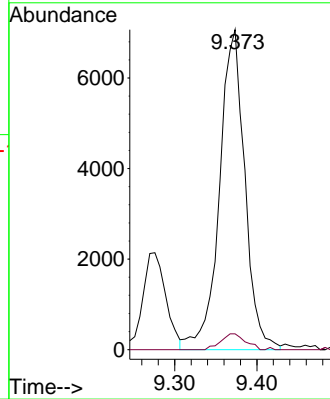
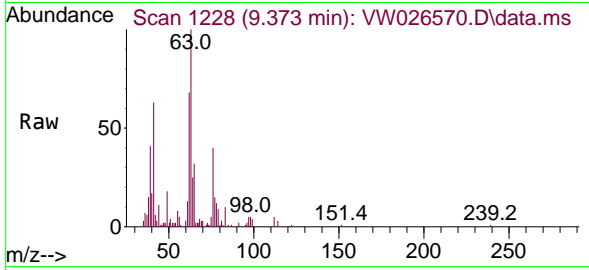




#37
 1,2-Dichloropropane
 Concen: 41.505 ug/L
 RT: 9.373 min Scan# 111
 Delta R.T. 0.006 min
 Lab File: VW026570.D
 Acq: 07 Jul 2023 15:29

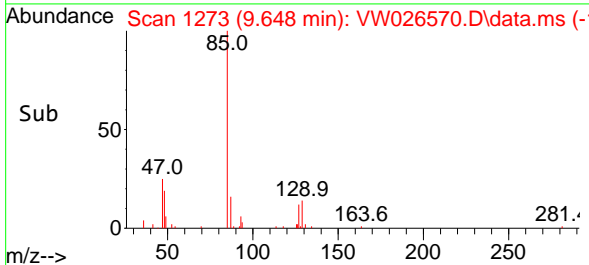
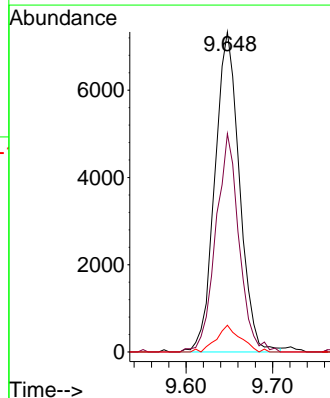
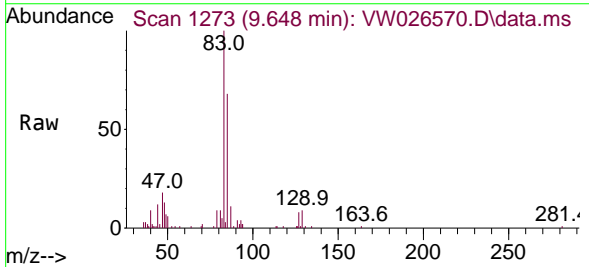
Instrument :
 MSVOA_W
 ClientSampleId :
 DCHB3MS

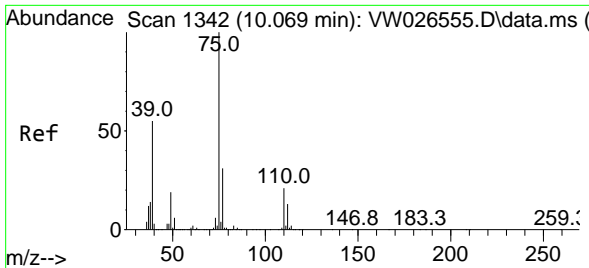
Tgt Ion: 63 Resp: 15188
 Ion Ratio Lower Upper
 63 100
 112 4.8 3.3 4.9



#38
 Bromodichloromethane
 Concen: 33.547 ug/L
 RT: 9.648 min Scan# 1273
 Delta R.T. 0.006 min
 Lab File: VW026570.D
 Acq: 07 Jul 2023 15:29

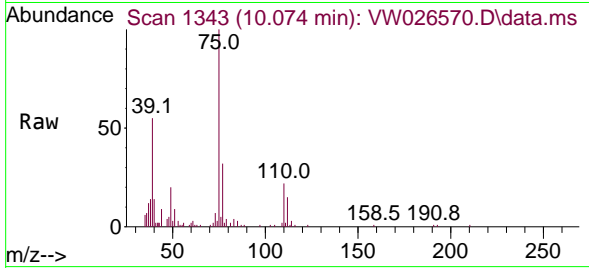
Tgt Ion: 83 Resp: 14485
 Ion Ratio Lower Upper
 83 100
 85 68.2 45.4 84.2
 127 8.3 5.2 7.8#



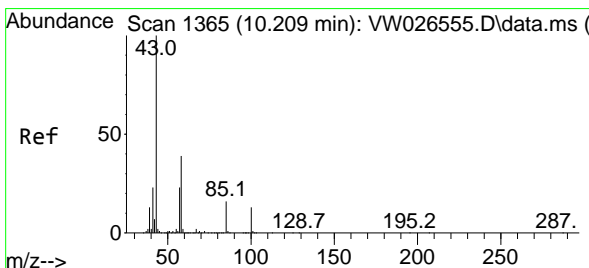
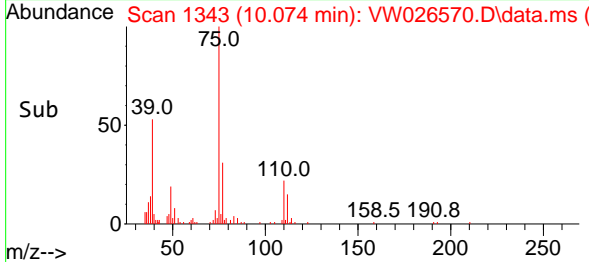
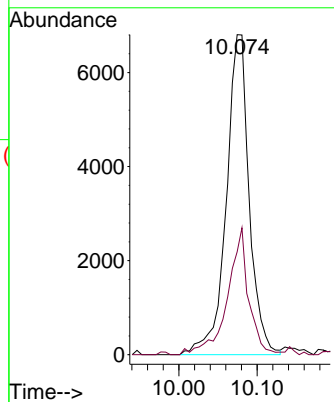


#39
 cis-1,3-Dichloropropene
 Concen: 25.706 ug/L
 RT: 10.074 min Scan# 1343
 Delta R.T. 0.006 min
 Lab File: VW026570.D
 Acq: 07 Jul 2023 15:29

Instrument :
 MSVOA_W
 ClientSampleId :
 DCHB3MS

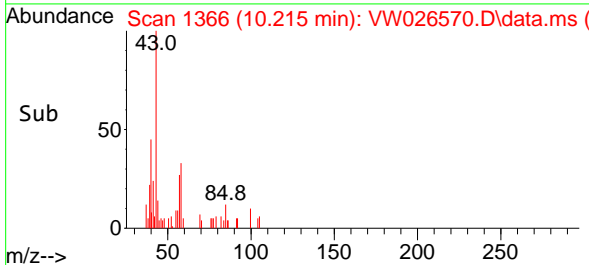
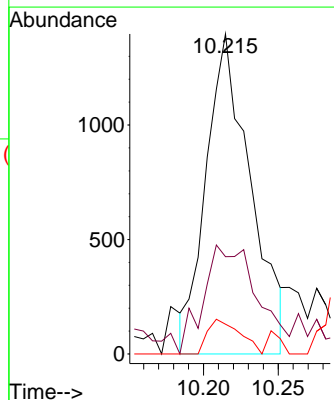
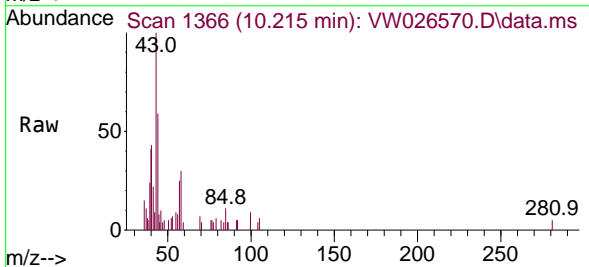


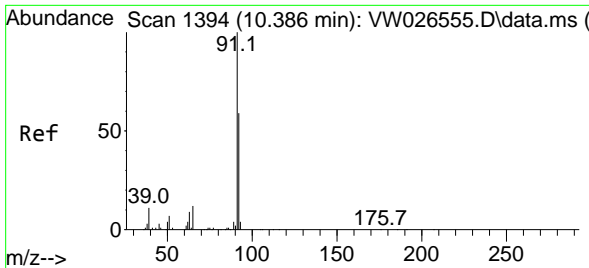
Tgt Ion: 75 Resp: 13870
 Ion Ratio Lower Upper
 75 100
 77 32.1 21.6 40.0



#40
 4-Methyl-2-pentanone
 Concen: 10.171 ug/L
 RT: 10.215 min Scan# 1366
 Delta R.T. 0.006 min
 Lab File: VW026570.D
 Acq: 07 Jul 2023 15:29

Tgt Ion: 43 Resp: 2880
 Ion Ratio Lower Upper
 43 100
 58 19.3 29.8 44.8#
 100 7.9 10.6 15.8#

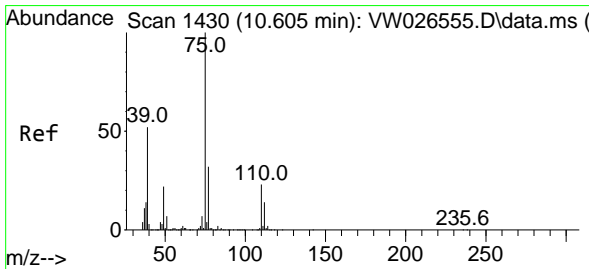
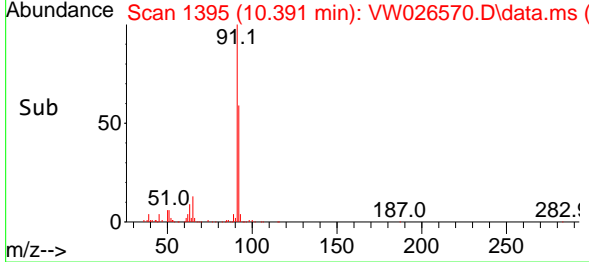
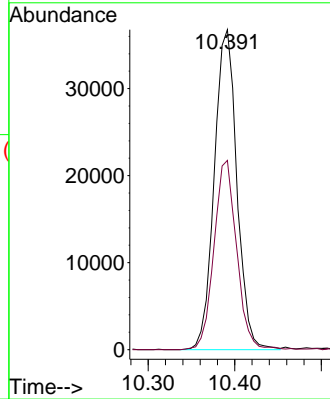
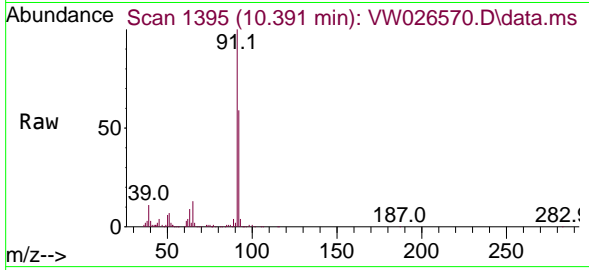




#42
 Toluene
 Concen: 49.002 ug/L
 RT: 10.391 min Scan# 1395
 Delta R.T. 0.006 min
 Lab File: VW026570.D
 Acq: 07 Jul 2023 15:29

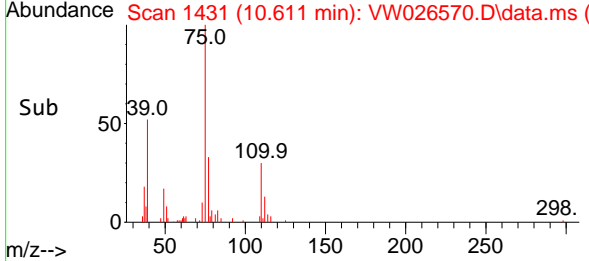
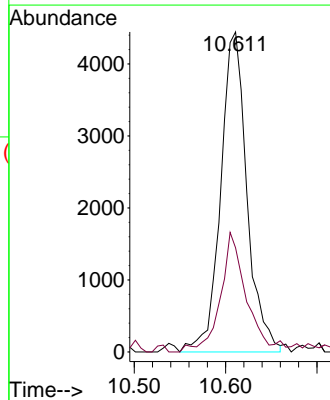
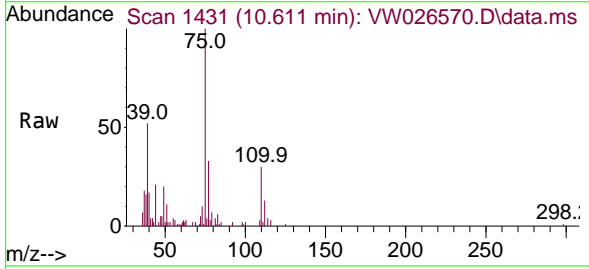
Instrument : MSVOA_W
 ClientSampleId : DCHB3MS

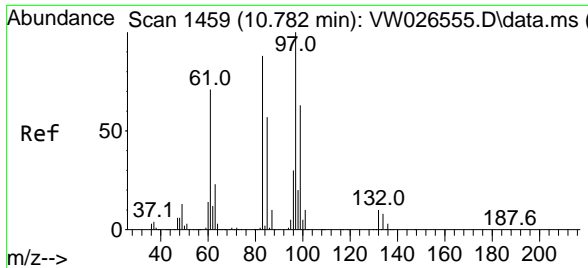
Tgt Ion: 91 Resp: 66621
 Ion Ratio Lower Upper
 91 100
 92 59.1 42.4 78.8



#44
 trans-1,3-Dichloropropene
 Concen: 19.706 ug/L
 RT: 10.611 min Scan# 1431
 Delta R.T. 0.006 min
 Lab File: VW026570.D
 Acq: 07 Jul 2023 15:29

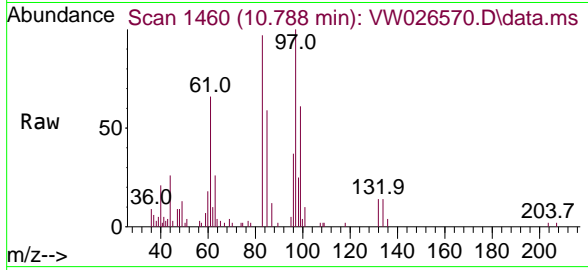
Tgt Ion: 75 Resp: 8911
 Ion Ratio Lower Upper
 75 100
 77 32.6 22.6 42.0





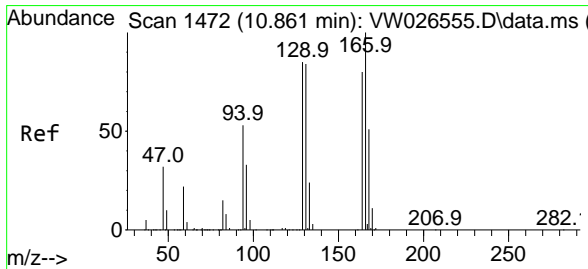
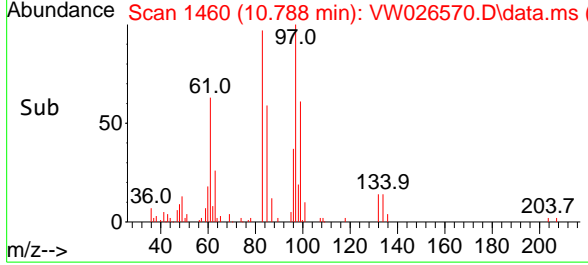
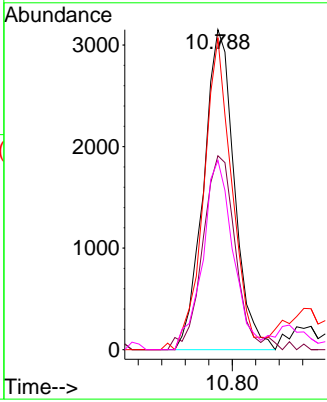
#45
 1,1,2-Trichloroethane
 Concen: 21.302 ug/L
 RT: 10.788 min Scan# 1459
 Delta R.T. 0.006 min
 Lab File: VW026570.D
 Acq: 07 Jul 2023 15:29

Instrument : MSVOA_W
 ClientSampleId : DCHB3MS



Tgt Ion: 97 Resp: 5730

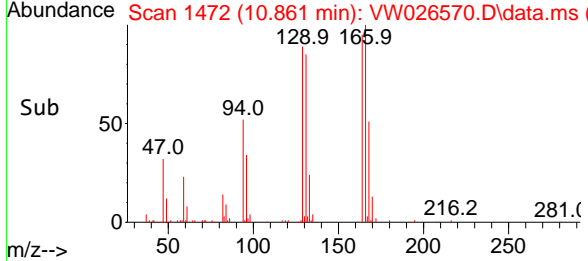
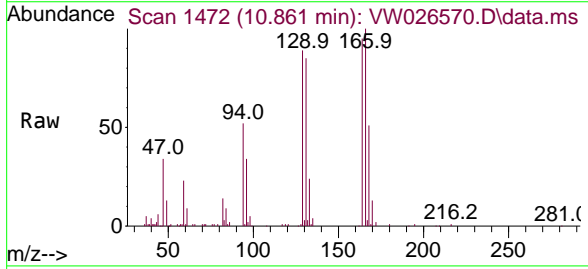
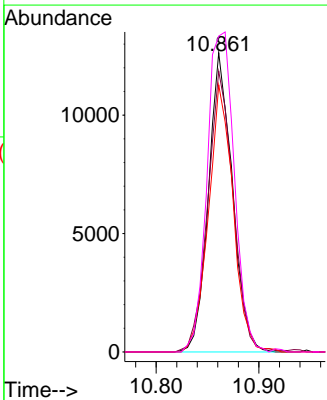
Ion	Ratio	Lower	Upper
97	100		
99	60.6	42.1	78.1
83	97.3	59.9	111.3
85	59.2	39.1	72.7

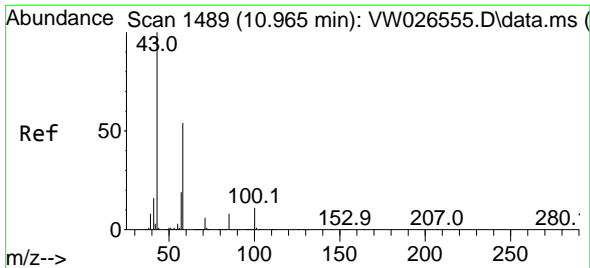


#46
 Tetrachloroethene
 Concen: 85.556 ug/L
 RT: 10.861 min Scan# 1472
 Delta R.T. -0.000 min
 Lab File: VW026570.D
 Acq: 07 Jul 2023 15:29

Tgt Ion: 164 Resp: 20453

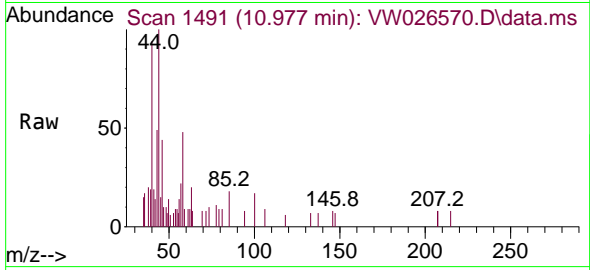
Ion	Ratio	Lower	Upper
164	100		
129	93.8	73.0	135.6
131	89.2	69.2	128.6
166	105.5	97.8	181.6





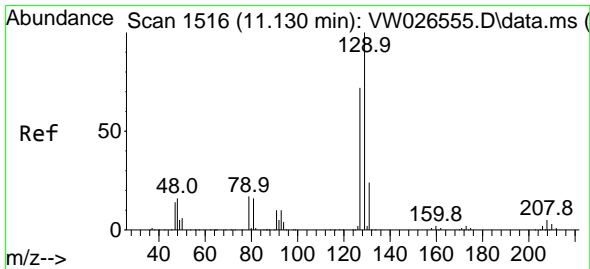
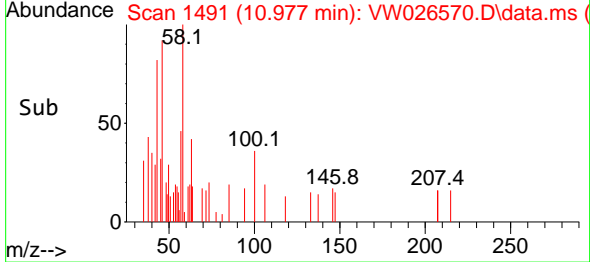
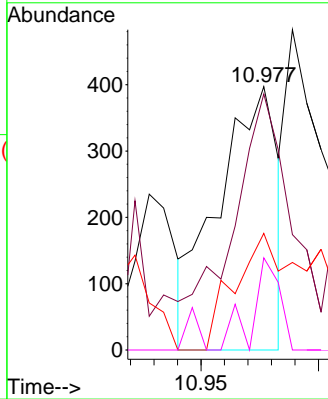
#48
 2-Hexanone
 Concen: 3.555 ug/L
 RT: 10.977 min Scan# 1489
 Delta R.T. 0.012 min
 Lab File: VW026570.D
 Acq: 07 Jul 2023 15:29

Instrument : MSVOA_W
 ClientSampleId : DCHB3MS

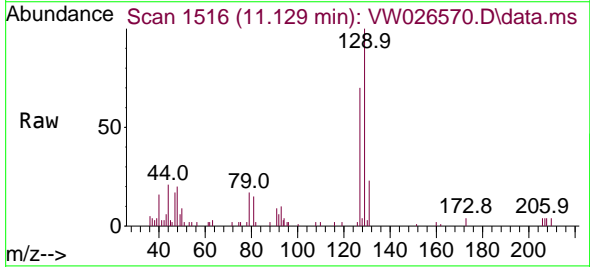


Tgt Ion: 43 Resp: 702

Ion	Ratio	Lower	Upper
43	100		
58	97.9	39.9	59.9#
57	32.2	14.1	21.1#
100	12.5	8.5	12.7

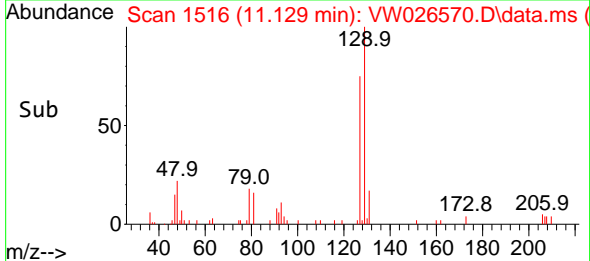
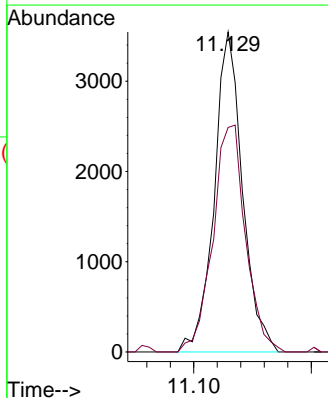


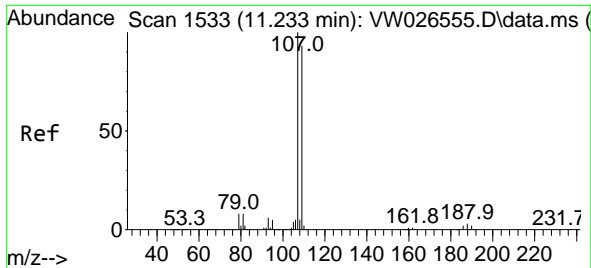
#49
 Dibromochloromethane
 Concen: 21.988 ug/L
 RT: 11.129 min Scan# 1516
 Delta R.T. -0.000 min
 Lab File: VW026570.D
 Acq: 07 Jul 2023 15:29



Tgt Ion: 129 Resp: 5926

Ion	Ratio	Lower	Upper
129	100		
127	70.2	50.0	93.0



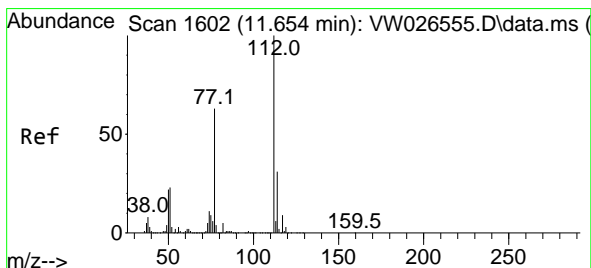
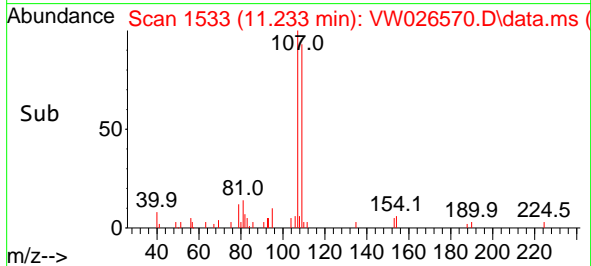
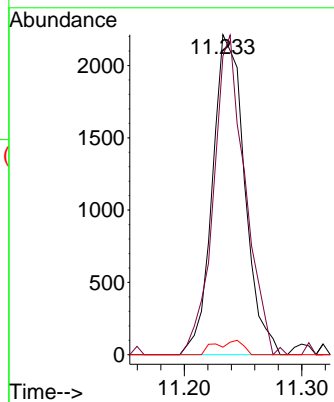
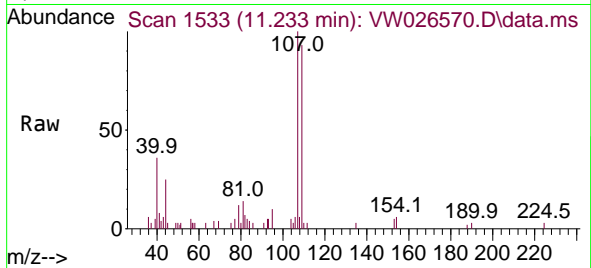


#50
 1,2-Dibromoethane
 Concen: 17.111 ug/L
 RT: 11.233 min Scan# 11
 Delta R.T. -0.000 min
 Lab File: VW026570.D
 Acq: 07 Jul 2023 15:29

Instrument :
 MSVOA_W
 ClientSampleId :
 DCHB3MS

Tgt Ion:107 Resp: 4221

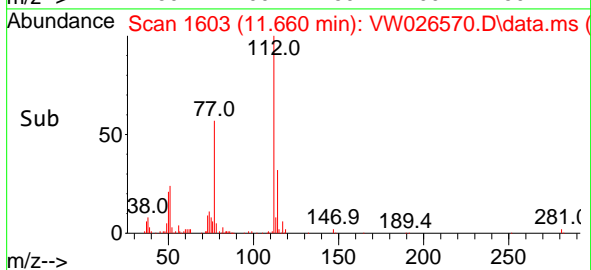
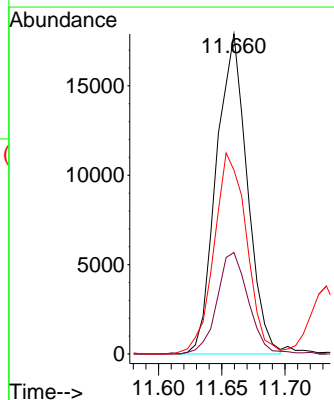
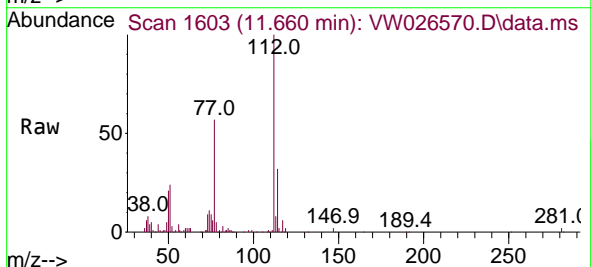
Ion	Ratio	Lower	Upper
107	100		
109	93.3	67.7	125.7
188	2.3	2.7	4.1#

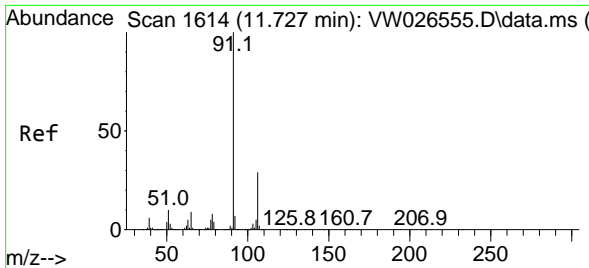


#51
 Chlorobenzene
 Concen: 34.189 ug/L
 RT: 11.660 min Scan# 1603
 Delta R.T. 0.006 min
 Lab File: VW026570.D
 Acq: 07 Jul 2023 15:29

Tgt Ion:112 Resp: 30382

Ion	Ratio	Lower	Upper
112	100		
114	31.7	22.2	41.2
77	57.4	53.4	80.2

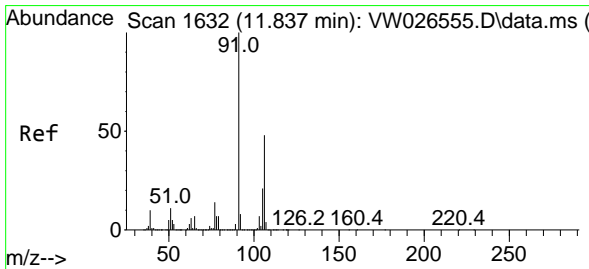
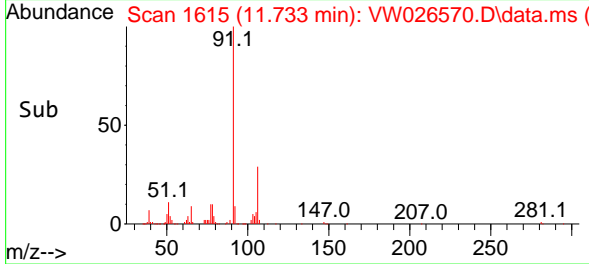
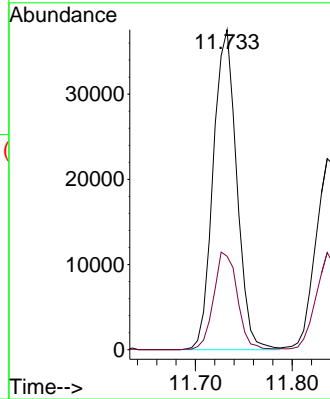
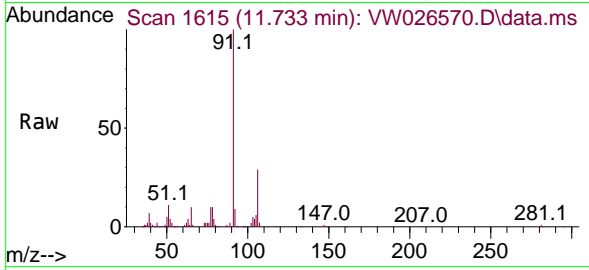




#52
 Ethylbenzene
 Concen: 39.476 ug/L
 RT: 11.733 min Scan# 1615
 Delta R.T. 0.006 min
 Lab File: VW026570.D
 Acq: 07 Jul 2023 15:29

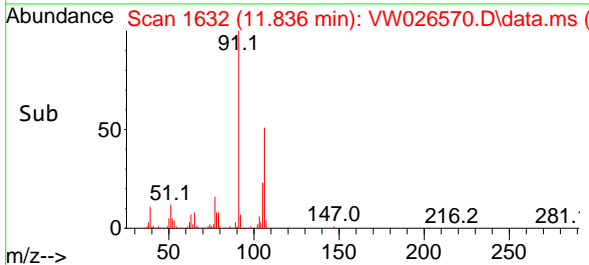
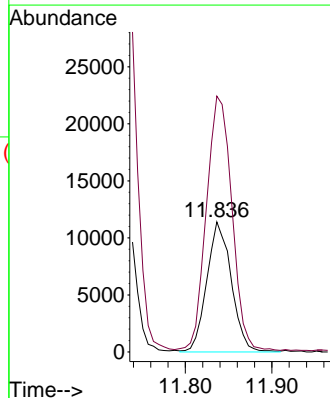
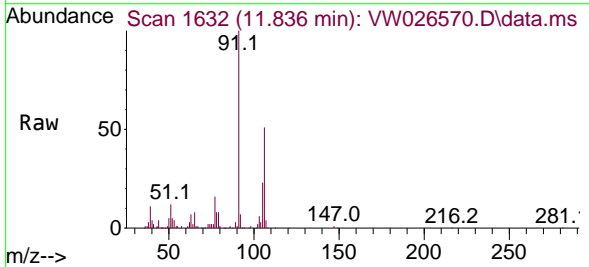
Instrument :
 MSVOA_W
 ClientSampleId :
 DCHB3MS

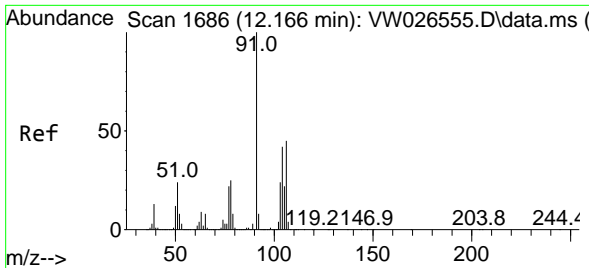
Tgt Ion: 91 Resp: 63378
 Ion Ratio Lower Upper
 91 100
 106 29.2 20.7 38.5



#53
 m,p-Xylene
 Concen: 38.289 ug/L
 RT: 11.836 min Scan# 1632
 Delta R.T. -0.000 min
 Lab File: VW026570.D
 Acq: 07 Jul 2023 15:29

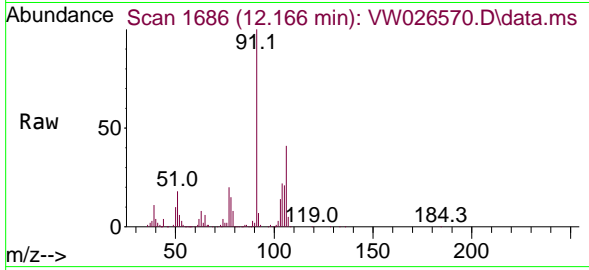
Tgt Ion:106 Resp: 22477
 Ion Ratio Lower Upper
 106 100
 91 196.6 152.7 283.7



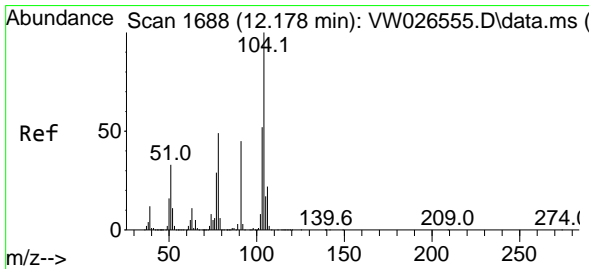
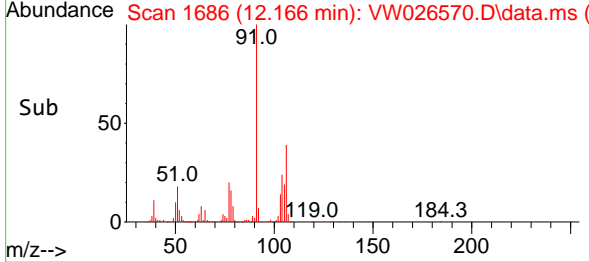
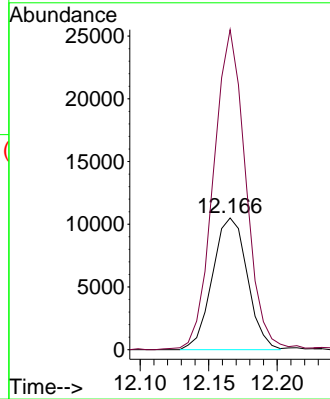


#54
 o-Xylene
 Concen: 32.709 ug/L
 RT: 12.166 min Scan# 1686
 Delta R.T. -0.000 min
 Lab File: VW026570.D
 Acq: 07 Jul 2023 15:29

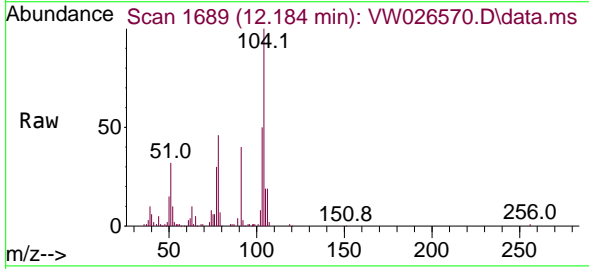
Instrument : MSVOA_W
 ClientSampleId : DCHB3MS



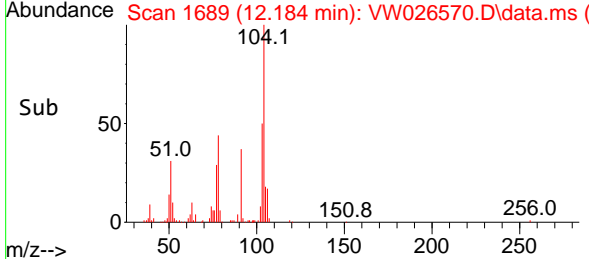
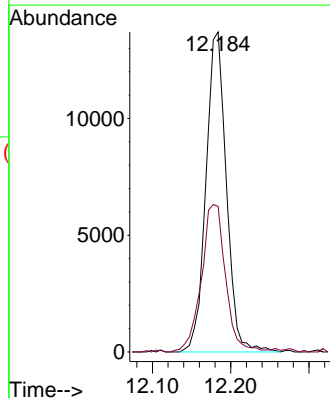
Tgt Ion:106 Resp: 18604
 Ion Ratio Lower Upper
 106 100
 91 242.9 151.8 282.0

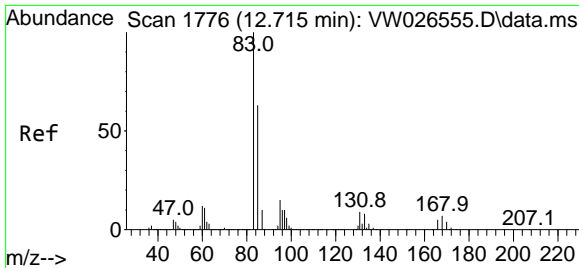


#55
 Styrene
 Concen: 25.519 ug/L
 RT: 12.184 min Scan# 1689
 Delta R.T. 0.006 min
 Lab File: VW026570.D
 Acq: 07 Jul 2023 15:29



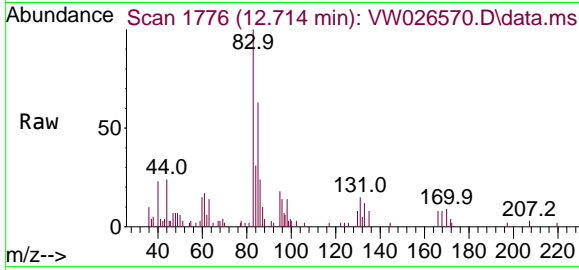
Tgt Ion:104 Resp: 24821
 Ion Ratio Lower Upper
 104 100
 78 45.5 35.6 66.2



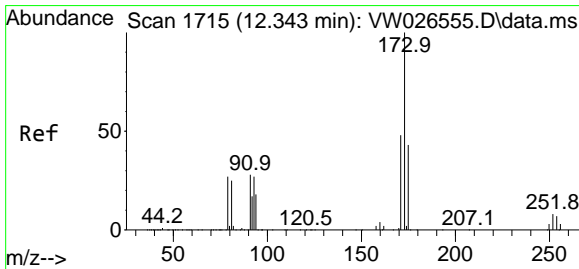
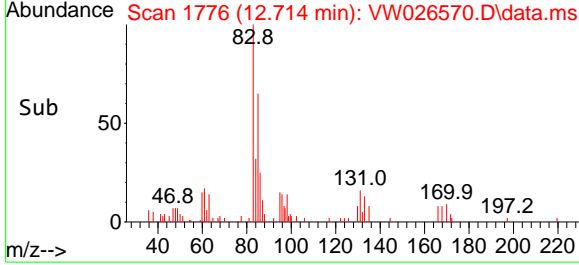
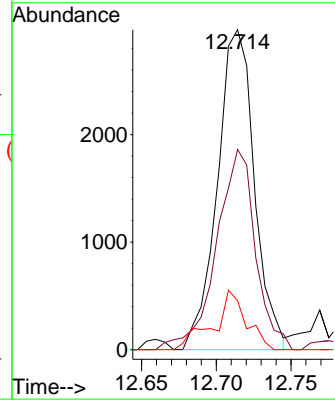


#57
 1,1,2,2-Tetrachloroethane
 Concen: 14.553 ug/L
 RT: 12.714 min Scan# 1776
 Delta R.T. -0.000 min
 Lab File: VW026570.D
 Acq: 07 Jul 2023 15:29

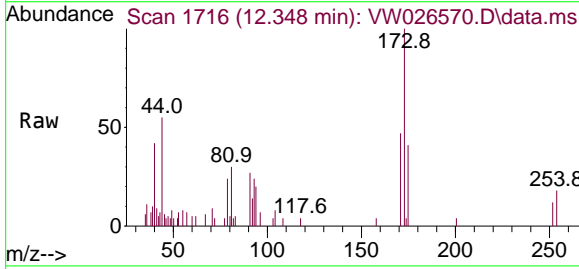
Instrument : MSVOA_W
 ClientSampleId : DCHB3MS



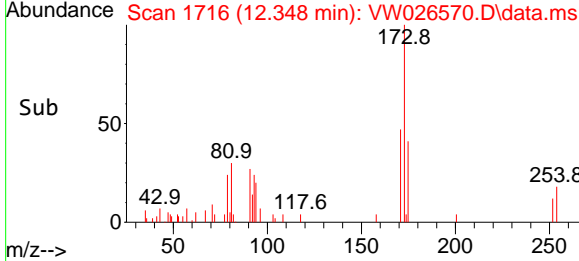
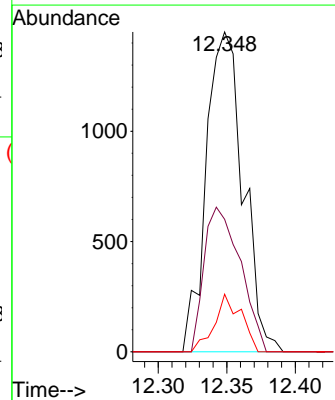
Tgt Ion	Resp	Lower	Upper
83	100		
85	62.6	44.4	82.5
131	15.3	7.2	10.8

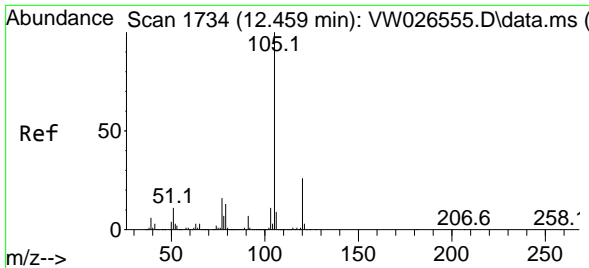


#59
 Bromoform
 Concen: 24.180 ug/L
 RT: 12.348 min Scan# 1716
 Delta R.T. 0.006 min
 Lab File: VW026570.D
 Acq: 07 Jul 2023 15:29



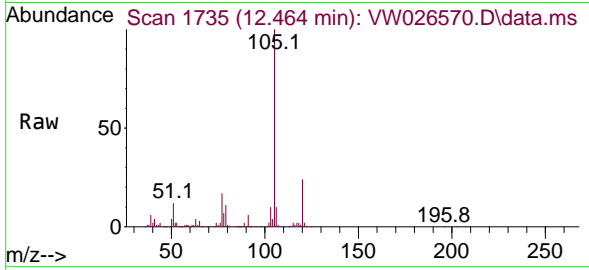
Tgt Ion	Ratio	Lower	Upper
173	100		
175	44.4	39.0	58.4
254	13.0	7.0	10.6





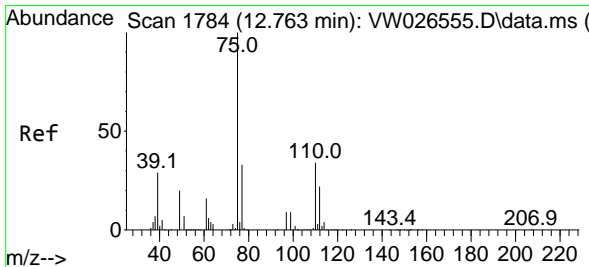
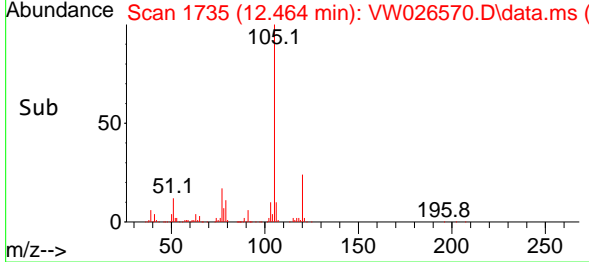
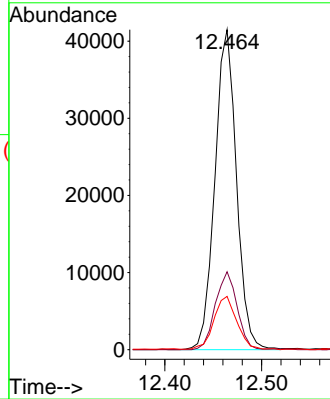
#60
 Isopropylbenzene
 Concen: 58.475 ug/L
 RT: 12.464 min Scan# 1735
 Delta R.T. 0.006 min
 Lab File: VW026570.D
 Acq: 07 Jul 2023 15:29

Instrument :
 MSVOA_W
 ClientSampleId :
 DCHB3MS



Tgt Ion:105 Resp: 64242

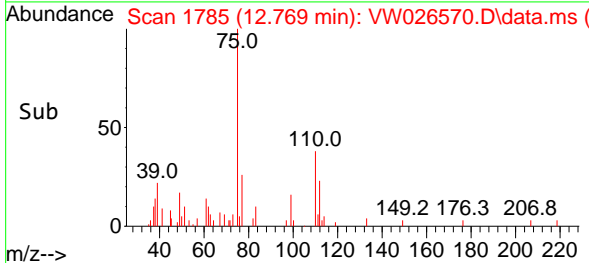
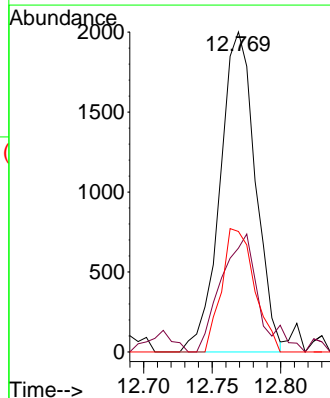
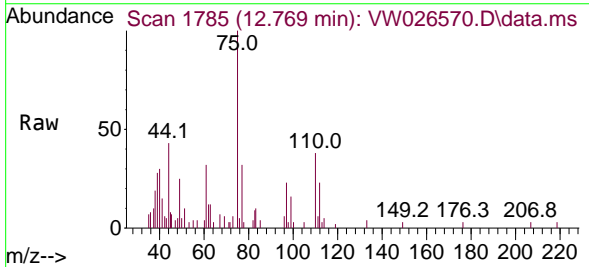
Ion	Ratio	Lower	Upper
105	100		
120	24.5	20.3	30.5
77	17.8	13.4	20.0

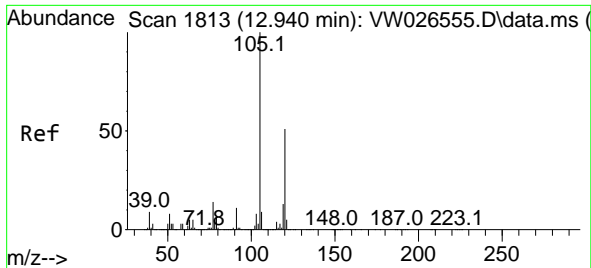


#61
 1,2,3-Trichloropropane
 Concen: 19.280 ug/L
 RT: 12.769 min Scan# 1785
 Delta R.T. 0.006 min
 Lab File: VW026570.D
 Acq: 07 Jul 2023 15:29

Tgt Ion: 75 Resp: 3598

Ion	Ratio	Lower	Upper
75	100		
77	36.3	25.1	37.7
110	35.7	28.3	42.5

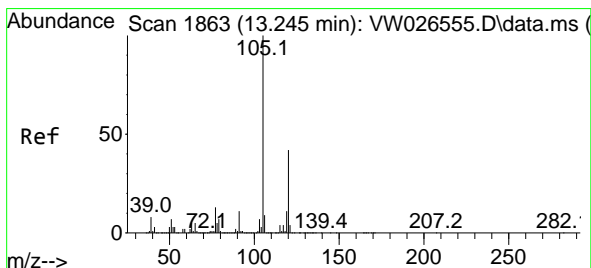
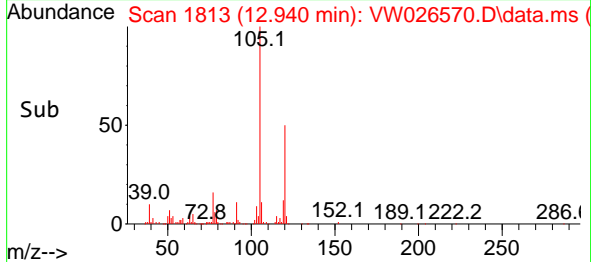
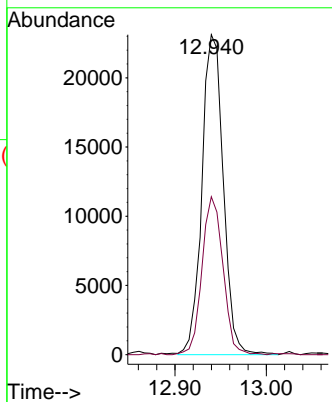
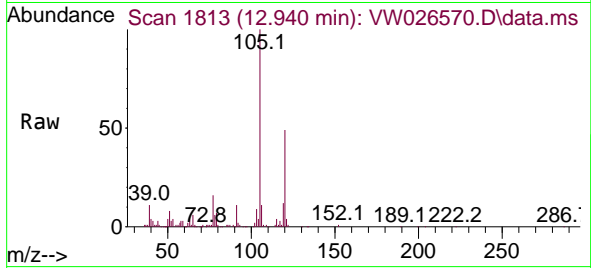




#62
 1,3,5-Trimethylbenzene
 Concen: 41.440 ug/L
 RT: 12.940 min Scan# 1813
 Delta R.T. -0.000 min
 Lab File: VW026570.D
 Acq: 07 Jul 2023 15:29

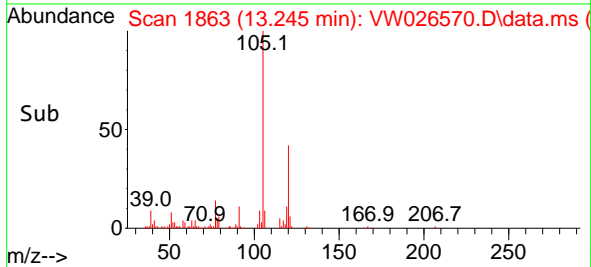
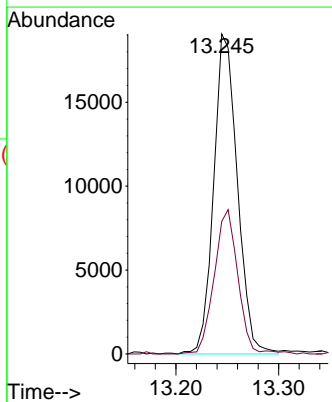
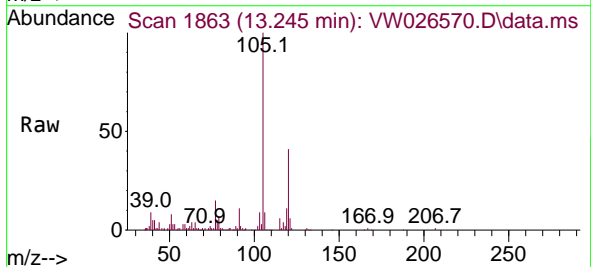
Instrument :
 MSVOA_W
 ClientSampleId :
 DCHB3MS

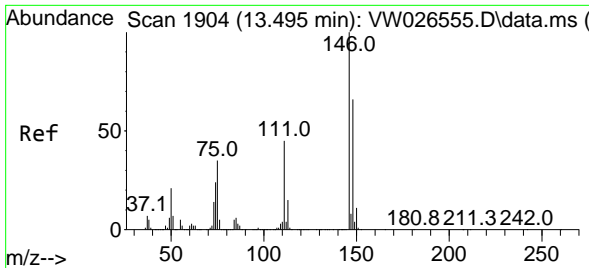
Tgt Ion:105 Resp: 37538
 Ion Ratio Lower Upper
 105 100
 120 48.2 38.0 57.0



#63
 1,2,4-Trimethylbenzene
 Concen: 34.995 ug/L
 RT: 13.245 min Scan# 1863
 Delta R.T. -0.000 min
 Lab File: VW026570.D
 Acq: 07 Jul 2023 15:29

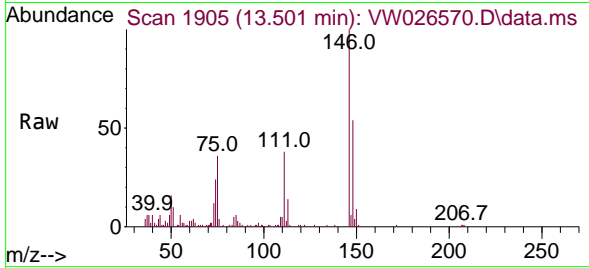
Tgt Ion:105 Resp: 30494
 Ion Ratio Lower Upper
 105 100
 120 43.3 35.5 53.3



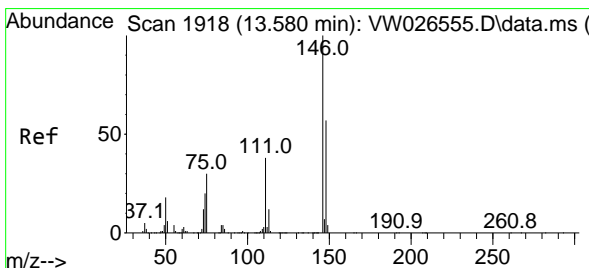
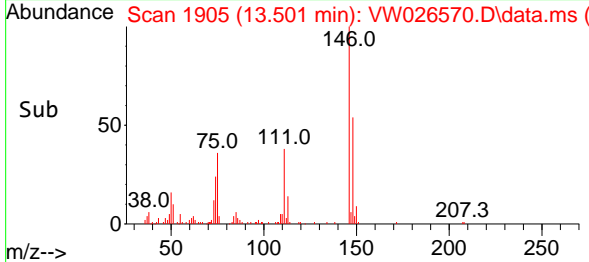
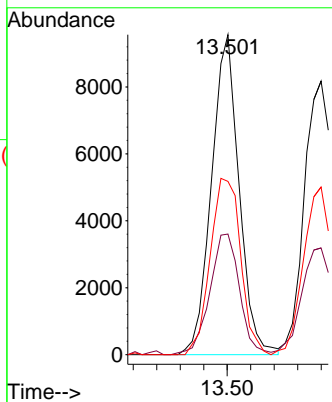


#64
 1,3-Dichlorobenzene
 Concen: 33.382 ug/L
 RT: 13.501 min Scan# 1905
 Delta R.T. 0.006 min
 Lab File: VW026570.D
 Acq: 07 Jul 2023 15:29

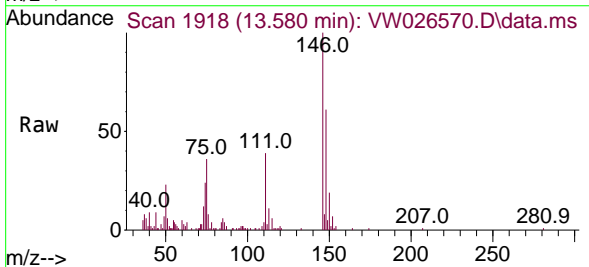
Instrument :
 MSVOA_W
 ClientSampleId :
 DCHB3MS



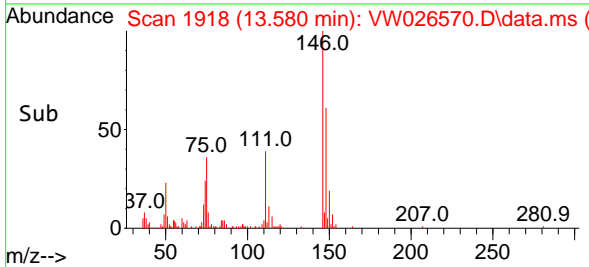
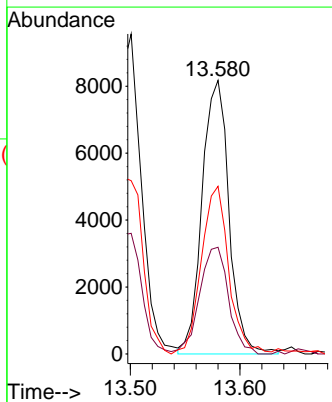
Tgt Ion:146 Resp: 15603
 Ion Ratio Lower Upper
 146 100
 111 37.7 32.7 60.7
 148 54.2 47.0 87.2

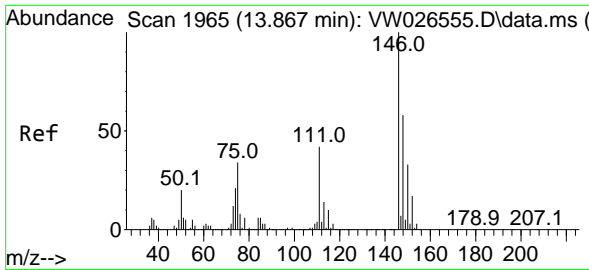


#65
 1,4-Dichlorobenzene
 Concen: 29.904 ug/L
 RT: 13.580 min Scan# 1918
 Delta R.T. -0.000 min
 Lab File: VW026570.D
 Acq: 07 Jul 2023 15:29



Tgt Ion:146 Resp: 13937
 Ion Ratio Lower Upper
 146 100
 111 39.0 30.2 56.0
 148 61.3 44.0 81.6



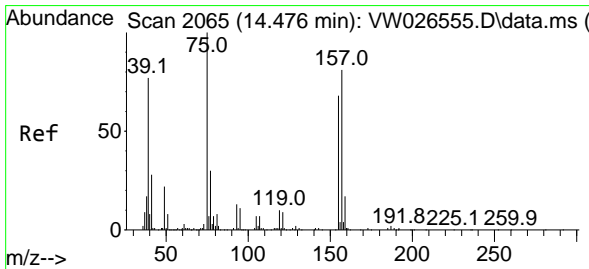
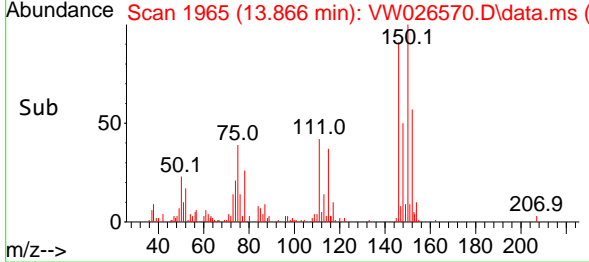
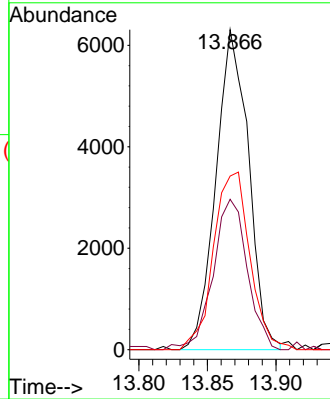
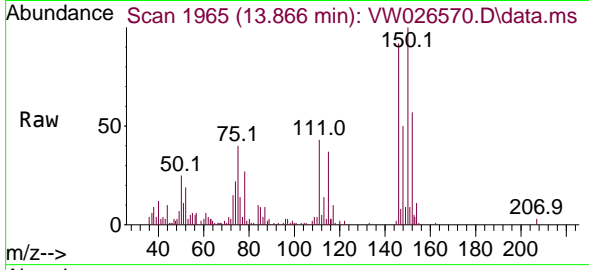


#67
 1,2-Dichlorobenzene
 Concen: 23.676 ug/L
 RT: 13.866 min Scan# 1965
 Delta R.T. -0.000 min
 Lab File: VW026570.D
 Acq: 07 Jul 2023 15:29

Instrument : MSVOA_W
 ClientSampleId : DCHB3MS

Tgt Ion:146 Resp: 10425

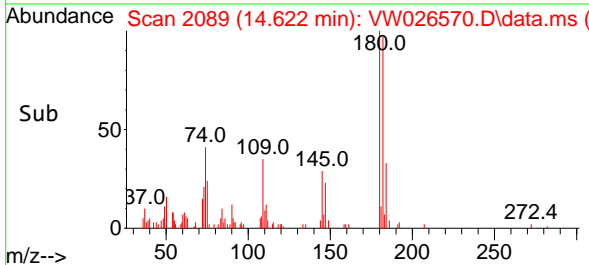
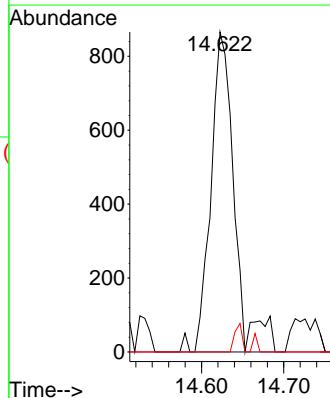
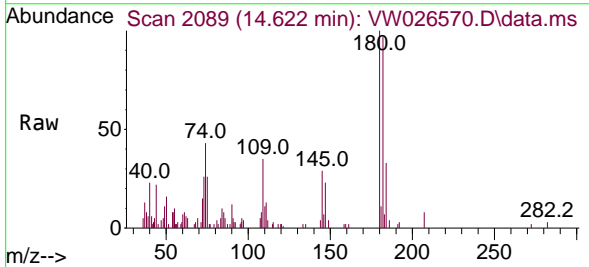
Ion	Ratio	Lower	Upper
146	100		
111	47.0	36.6	55.0
148	54.2	55.1	82.7#

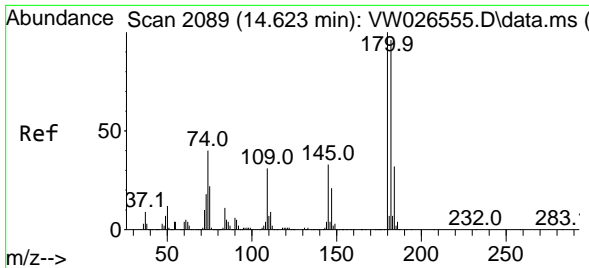


#68
 1,2-Dibromo-3-chloropropane
 Concen: 36.888 ug/L
 RT: 14.622 min Scan# 2089
 Delta R.T. 0.146 min
 Lab File: VW026570.D
 Acq: 07 Jul 2023 15:29

Tgt Ion: 75 Resp: 1736

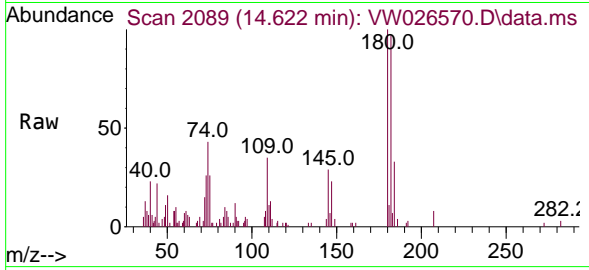
Ion	Ratio	Lower	Upper
75	100		
155	0.0	57.3	85.9#
157	0.0	76.9	115.3#



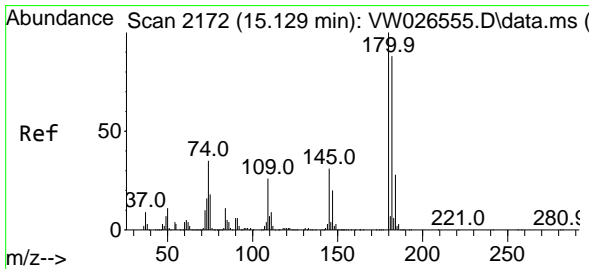
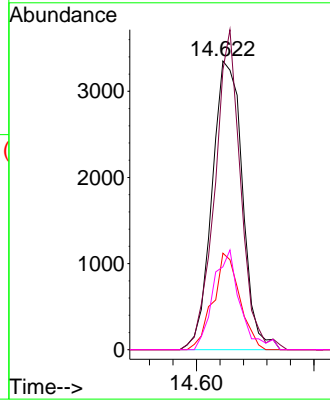
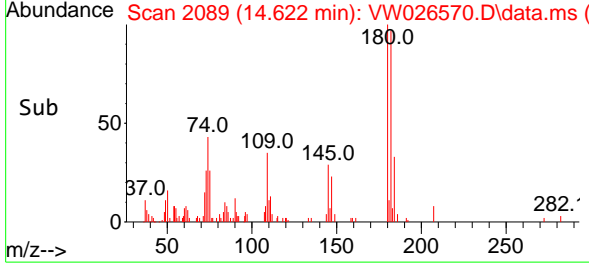


#69
 1,3,5-Trichlorobenzene
 Concen: 19.350 ug/L
 RT: 14.622 min Scan# 2089
 Delta R.T. -0.000 min
 Lab File: VW026570.D
 Acq: 07 Jul 2023 15:29

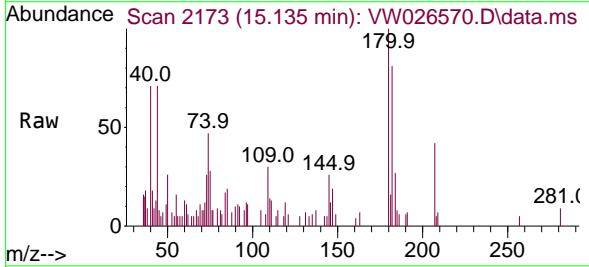
Instrument : MSVOA_W
 ClientSampleId : DCHB3MS



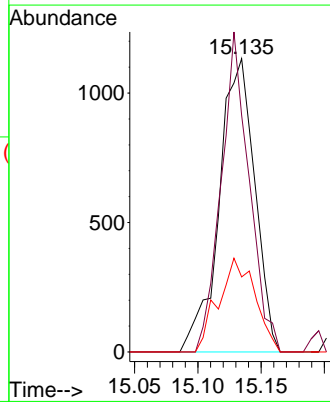
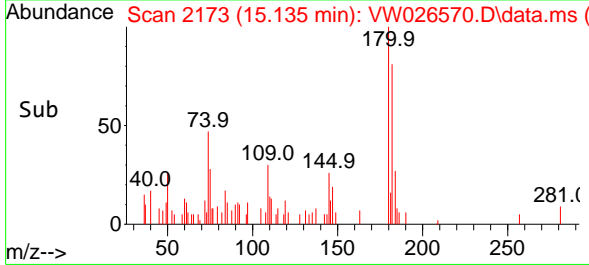
Tgt Ion:180 Resp: 6016
 Ion Ratio Lower Upper
 180 100
 182 93.5 75.5 113.3
 184 29.5 23.8 35.8
 145 29.8 25.0 37.4

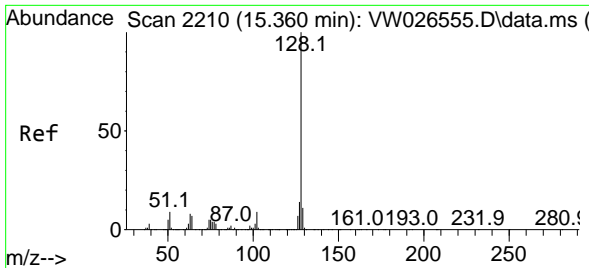


#70
 1,2,4-trichlorobenzene
 Concen: 8.761 ug/L
 RT: 15.135 min Scan# 2173
 Delta R.T. 0.006 min
 Lab File: VW026570.D
 Acq: 07 Jul 2023 15:29



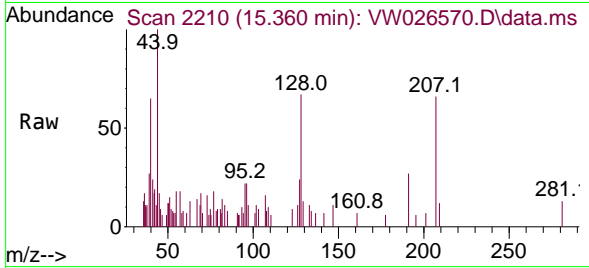
Tgt Ion:180 Resp: 2222
 Ion Ratio Lower Upper
 180 100
 182 86.0 74.5 111.7
 145 32.9 25.9 38.9





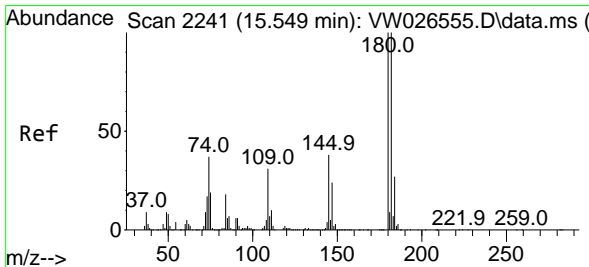
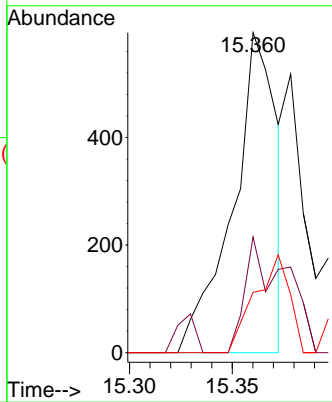
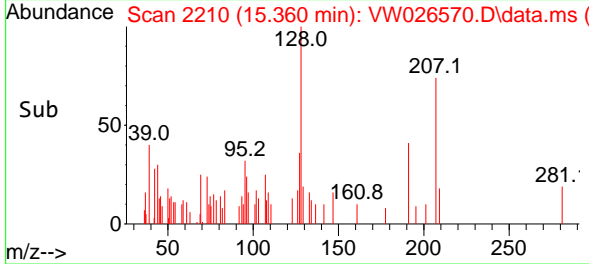
#71
 Naphthalene
 Concen: 1.550 ug/L
 RT: 15.360 min Scan# 211
 Delta R.T. -0.000 min
 Lab File: VW026570.D
 Acq: 07 Jul 2023 15:29

Instrument : MSVOA_W
 ClientSampleId : DCHB3MS

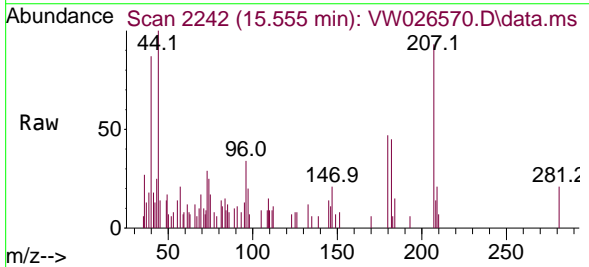


Tgt Ion:128 Resp: 880

Ion	Ratio	Lower	Upper
128	100		
127	16.6	10.2	15.2#
129	0.0	8.6	13.0#



#72
 1,2,3-Trichlorobenzene
 Concen: 3.279 ug/L
 RT: 15.555 min Scan# 2242
 Delta R.T. 0.006 min
 Lab File: VW026570.D
 Acq: 07 Jul 2023 15:29



Tgt Ion:180 Resp: 743

Ion	Ratio	Lower	Upper
180	100		
182	118.8	75.3	112.9#
145	16.6	29.0	43.6#

