

Data Path : Z:\voasrv\HPCHEM1\MSVOA_W\Data\VW070924\
 Data File : VW029490.D
 Acq On : 09 Jul 2024 17:46
 Operator : SY/MD
 Sample : P3177-08
 Misc : 5.36g/10mL/MSVOA_W/SOIL/A
 ALS Vial : 12 Sample Multiplier: 1

Instrument :
 MSVOA_W
 ClientSampleId :
 A4BS6

Integration Parameters: LSCINT.P

Integrator: RTE
 Smoothing : OFF
 Sampling : 1
 Start Thrs: 0.2
 Stop Thrs : 0

Filtering: 5
 Min Area: 0 % of largest Peak
 Max Peaks: 100
 Peak Location: TOP

If leading or trailing edge < 100 prefer < Baseline drop else tangent >
 Peak separation: 5

Method : Z:\voasrv\HPCHEM1\MSVOA_W\Method\SFAMWLM070824SMA.M
 Title : SFAM01.0

Signal : TIC: VW029490.D\data.ms

peak #	R.T. min	first scan	max scan	last scan	PK TY	peak height	corr. area	corr. % max.	% of total
1	2.174	45	47	50	rVV3	1320	1646	0.11%	0.013%
2	2.228	50	56	57	rBV6	1677	2977	0.20%	0.023%
3	2.363	71	78	95	rBV2	67672	202720	13.60%	1.580%
4	2.893	157	165	182	rBV	58080	180442	12.11%	1.406%
5	3.393	238	247	251	rBV7	1482	3244	0.22%	0.025%
6	3.539	268	271	274	rVB5	676	973	0.07%	0.008%
7	3.564	274	275	282	rVB6	655	1068	0.07%	0.008%
8	4.015	337	349	361	rBV	146684	507406	34.04%	3.954%
9	4.118	361	366	388	rVV	31058	97969	6.57%	0.763%
10	4.387	401	410	418	rBV2	2965	10210	0.68%	0.080%
11	4.917	480	497	508	rBV3	16799	74233	4.98%	0.578%
12	5.161	535	537	539	rVV3	853	933	0.06%	0.007%
13	5.771	631	637	638	rVV3	2498	3755	0.25%	0.029%
14	5.789	638	640	651	rVB6	2980	6295	0.42%	0.049%
15	5.947	655	666	674	rVB5	3888	12174	0.82%	0.095%
16	6.612	772	775	779	rVB4	607	1016	0.07%	0.008%
17	7.075	841	851	860	rBV2	40586	120884	8.11%	0.942%
18	7.173	862	867	880	rVV3	12897	38614	2.59%	0.301%
19	7.532	923	926	930	rBV6	588	878	0.06%	0.007%
20	7.648	934	945	960	rBV	246425	614111	41.20%	4.785%
21	7.764	960	964	968	rVB5	668	1048	0.07%	0.008%
22	8.154	1025	1028	1033	rVB6	1067	1994	0.13%	0.016%
23	8.276	1036	1048	1064	rBV2	508696	1490616	100.00%	11.615%
24	8.471	1077	1080	1082	rBV4	801	922	0.06%	0.007%
25	8.563	1092	1095	1101	rVB7	1671	2196	0.15%	0.017%
26	8.703	1111	1118	1127	rBV10	1365	4309	0.29%	0.034%
27	8.843	1129	1141	1156	rBV	415588	836963	56.15%	6.522%
28	9.032	1168	1172	1175	rBV4	3082	5193	0.35%	0.040%
29	9.270	1201	1211	1220	rBV	334782	696354	46.72%	5.426%
30	9.465	1240	1243	1247	rVB6	832	1169	0.08%	0.009%
31	9.599	1262	1265	1273	rVB8	1991	3740	0.25%	0.029%
32	9.697	1279	1281	1284	rBV4	777	882	0.06%	0.007%
33	9.752	1285	1290	1299	rVB7	4670	9941	0.67%	0.077%
34	9.892	1307	1313	1318	rBV5	2695	5492	0.37%	0.043%
35	9.947	1320	1322	1325	rVB4	1284	1289	0.09%	0.010%
36	9.983	1325	1328	1329	rBV2	1852	1685	0.11%	0.013%

Data Path : Z:\voasrv\HPCHEM1\MSVOA_W\Data\VW070924\
 Data File : VW029490.D
 Acq On : 09 Jul 2024 17:46
 Operator : SY/MD
 Sample : P3177-08
 Misc : 5.36g/10mL/MSVOA_W/SOIL/A
 ALS Vial : 12 Sample Multiplier: 1

Instrument :
 MSVOA_W
 ClientSampleId :
 A4BS6

Integration Parameters: LSCINT.P

Integrator: RTE
 Smoothing : OFF
 Sampling : 1
 Start Thrs: 0.2
 Stop Thrs : 0

Filtering: 5
 Min Area: 0 % of largest Peak
 Max Peaks: 100
 Peak Location: TOP

If leading or trailing edge < 100 prefer < Baseline drop else tangent >
 Peak separation: 5

Method : Z:\voasrv\HPCHEM1\MSVOA_W\Method\SFAMWLM070824SMA.M
 Title : SFAM01.0

37	10.032	1329	1336	1349	rVB	158443	288550	19.36%	2.248%
38	10.203	1362	1364	1366	rBV3	1243	1480	0.10%	0.012%
39	10.325	1375	1384	1392	rBV	620238	1120807	75.19%	8.734%
40	10.489	1407	1411	1412	rBV4	3062	3487	0.23%	0.027%
41	10.575	1419	1425	1436	rBV	96249	178033	11.94%	1.387%
42	10.660	1436	1439	1442	rVV5	5268	8971	0.60%	0.070%
43	10.703	1442	1446	1450	rVB2	11504	18594	1.25%	0.145%
44	10.770	1451	1457	1460	rBV6	3363	6796	0.46%	0.053%
45	10.843	1465	1469	1474	rVB3	7636	12196	0.82%	0.095%
46	10.922	1475	1482	1493	rBV	168330	304852	20.45%	2.375%
47	11.038	1495	1501	1508	rVV4	7715	17590	1.18%	0.137%
48	11.105	1509	1512	1516	rVV2	4341	4788	0.32%	0.037%
49	11.178	1519	1524	1527	rVV2	13426	22320	1.50%	0.174%
50	11.227	1527	1532	1538	rVV	34672	66513	4.46%	0.518%
51	11.288	1538	1542	1544	rVV4	8189	14839	1.00%	0.116%
52	11.330	1544	1549	1554	rVV3	22681	49473	3.32%	0.386%
53	11.373	1554	1556	1562	rVV4	9719	22754	1.53%	0.177%
54	11.434	1562	1566	1573	rVB2	18625	34115	2.29%	0.266%
55	11.501	1573	1577	1583	rVB2	6704	10982	0.74%	0.086%
56	11.550	1583	1585	1588	rBV3	1901	2410	0.16%	0.019%
57	11.629	1590	1598	1606	rBV	441116	783650	52.57%	6.106%
58	11.763	1616	1620	1623	rBV3	10400	15828	1.06%	0.123%
59	11.812	1623	1628	1632	rBV5	10900	21518	1.44%	0.168%
60	11.873	1633	1638	1642	rBV	25466	46542	3.12%	0.363%
61	11.977	1649	1655	1661	rBV5	9640	25634	1.72%	0.200%
62	12.056	1665	1668	1673	rVB3	10796	18370	1.23%	0.143%
63	12.135	1673	1681	1687	rBV4	44918	111481	7.48%	0.869%
64	12.251	1692	1700	1704	rVB	60662	111679	7.49%	0.870%
65	12.361	1704	1718	1726	rBV4	86233	301986	20.26%	2.353%
66	12.446	1729	1732	1734	rBV3	10142	13542	0.91%	0.106%
67	12.495	1738	1740	1748	rVB6	37082	63630	4.27%	0.496%
68	12.605	1752	1758	1765	rVB3	44208	112661	7.56%	0.878%
69	12.690	1765	1772	1778	rBV	220573	395916	26.56%	3.085%
70	12.775	1782	1786	1792	rVB2	89672	161817	10.86%	1.261%
71	12.855	1792	1799	1804	rBV4	40268	101179	6.79%	0.788%
72	12.940	1804	1813	1818	rBV6	84834	243677	16.35%	1.899%
73	13.037	1825	1829	1831	rBV4	12020	18525	1.24%	0.144%
74	13.074	1831	1835	1839	rBV	39718	53407	3.58%	0.416%
75	13.117	1839	1842	1845	rBV4	21389	32595	2.19%	0.254%
76	13.159	1846	1849	1851	rBV2	30633	42182	2.83%	0.329%

Data Path : Z:\voasrv\HPCHEM1\MSVOA_W\Data\VW070924\
 Data File : VW029490.D
 Acq On : 09 Jul 2024 17:46
 Operator : SY/MD
 Sample : P3177-08
 Misc : 5.36g/10mL/MSVOA_W/SOIL/A
 ALS Vial : 12 Sample Multiplier: 1

Instrument :
 MSVOA_W
 ClientSampleId :
 A4BS6

Integration Parameters: LSCINT.P
 Integrator: RTE
 Smoothing : OFF
 Sampling : 1
 Start Thrs: 0.2
 Stop Thrs : 0
 Filtering: 5
 Min Area: 0 % of largest Peak
 Max Peaks: 100
 Peak Location: TOP

If leading or trailing edge < 100 prefer < Baseline drop else tangent >
 Peak separation: 5

Method : Z:\voasrv\HPCHEM1\MSVOA_W\Method\SFAMWLM070824SMA.M
 Title : SFAM01.0

77	13.287	1866	1870	1875	rBV	39662	56738	3.81%	0.442%
78	13.336	1875	1878	1882	rBV4	30356	37729	2.53%	0.294%
79	13.373	1882	1884	1886	rBV3	13291	13175	0.88%	0.103%
80	13.409	1886	1890	1891	rBV2	28162	37700	2.53%	0.294%
81	13.440	1892	1895	1899	rVB3	66449	98378	6.60%	0.767%
82	13.556	1908	1914	1918	rBV	267451	420468	28.21%	3.276%
83	13.690	1931	1936	1941	rBV3	42105	80317	5.39%	0.626%
84	13.848	1956	1962	1970	rBV2	281618	677369	45.44%	5.278%
85	13.976	1979	1983	1986	rBV3	35655	53109	3.56%	0.414%
86	14.062	1993	1997	2002	rVB3	33640	58470	3.92%	0.456%
87	14.184	2014	2017	2021	rBV3	22077	34603	2.32%	0.270%
88	14.257	2025	2029	2034	rVV3	47527	84345	5.66%	0.657%
89	14.312	2035	2038	2042	rVB4	25895	36974	2.48%	0.288%
90	14.379	2043	2049	2055	rVV3	118429	200692	13.46%	1.564%
91	14.488	2064	2067	2069	rBV4	17203	24084	1.62%	0.188%
92	14.543	2072	2076	2080	rVB3	58565	93192	6.25%	0.726%
93	14.647	2091	2093	2098	rBV4	15256	19279	1.29%	0.150%
94	14.732	2103	2107	2112	rVV6	30278	57103	3.83%	0.445%
95	14.793	2113	2117	2121	rVV	50450	97221	6.52%	0.758%
96	14.842	2121	2125	2134	rVB5	62483	136944	9.19%	1.067%
97	15.318	2198	2203	2209	rVB	194124	316422	21.23%	2.466%
98	15.391	2210	2215	2219	rBV4	35891	71740	4.81%	0.559%
99	15.561	2240	2243	2249	rBV7	22381	40957	2.75%	0.319%
100	16.275	2354	2360	2369	rVB	138397	275639	18.49%	2.148%

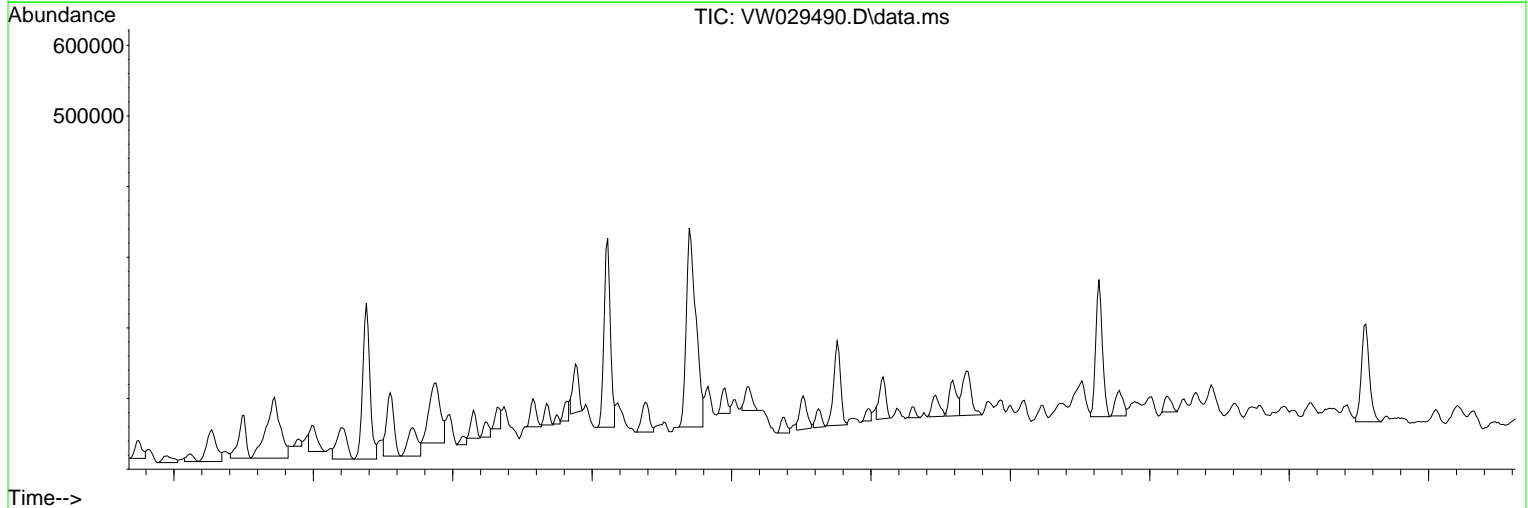
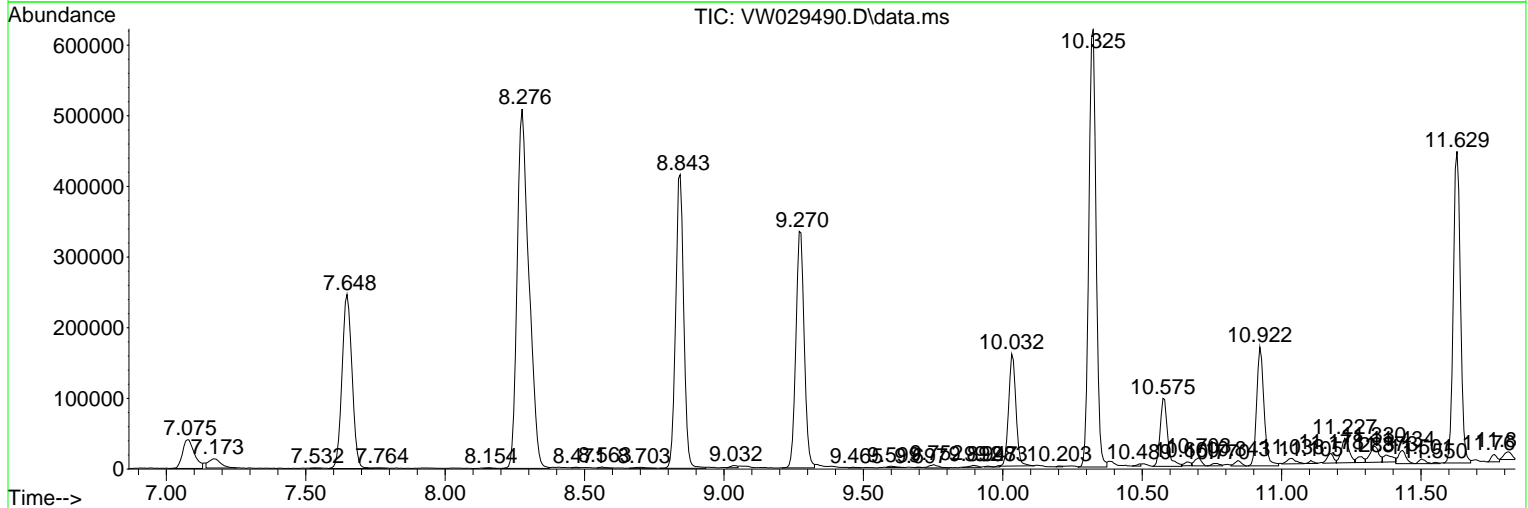
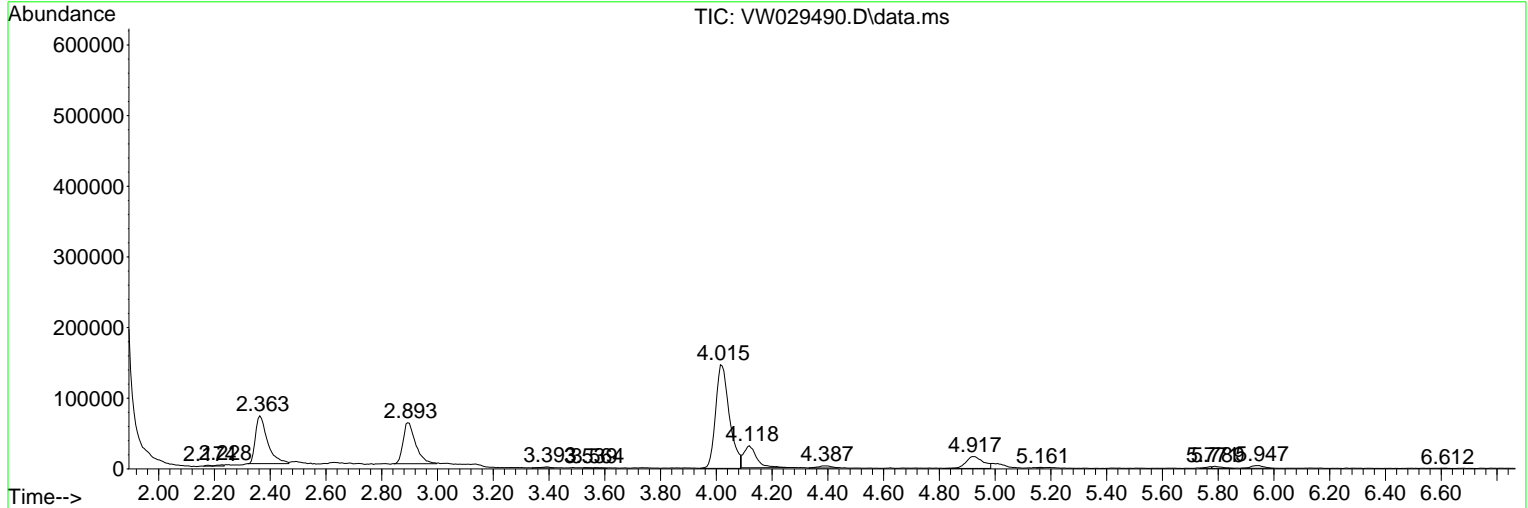
Sum of corrected areas: 12833358

Data Path : Z:\voasrv\HPCHEM1\MSVOA_W\Data\VW070924\
 Data File : VW029490.D
 Acq On : 09 Jul 2024 17:46
 Operator : SY/MD
 Sample : P3177-08
 Misc : 5.36g/10mL/MSVOA_W/SOIL/A
 ALS Vial : 12 Sample Multiplier: 1

Instrument :
 MSVOA_W
 ClientSampleId :
 A4BS6

Quant Method : Z:\voasrv\HPCHEM1\MSVOA_W\Method\SFAMWLM070824SMA.M
 Quant Title : SFAM01.0

TIC Library : C:\Database\NIST20.L
 TIC Integration Parameters: LSCINT.P



Data Path : Z:\voasrv\HPCHEM1\MSVOA_W\Data\VW070924\
 Data File : VW029490.D
 Acq On : 09 Jul 2024 17:46
 Operator : SY/MD
 Sample : P3177-08
 Misc : 5.36g/10mL/MSVOA_W/SOIL/A
 ALS Vial : 12 Sample Multiplier: 1

Instrument :
 MSVOA_W
 ClientSampleId :
 A4BS6

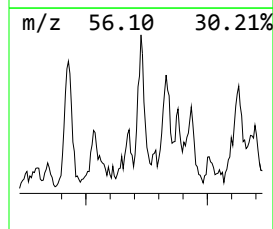
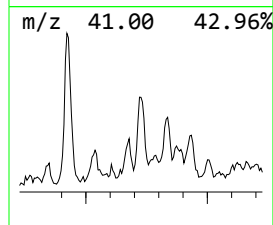
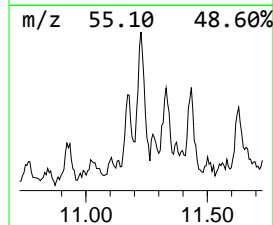
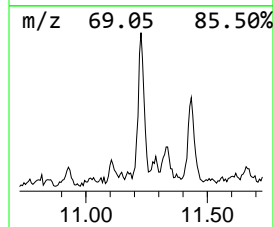
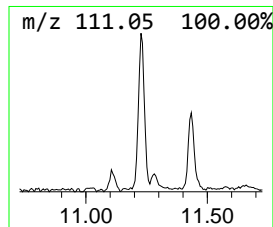
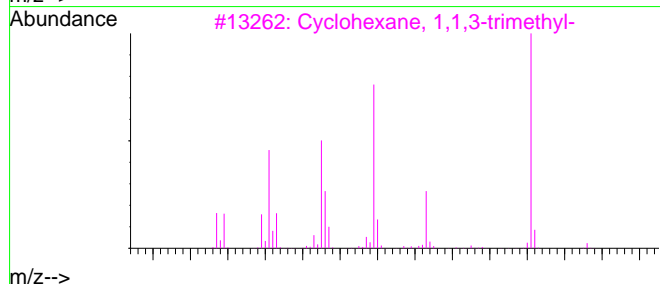
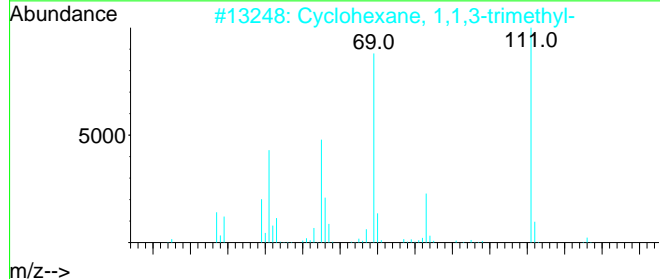
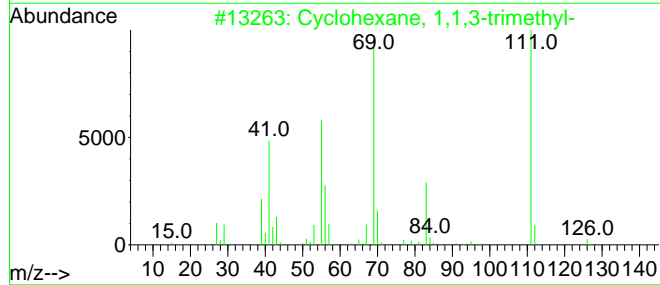
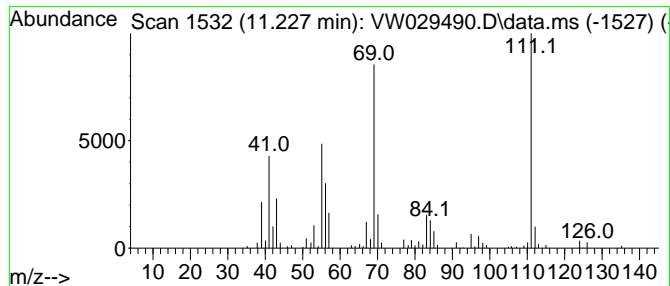
Quant Method : Z:\voasrv\HPCHEM1\MSVOA_W\Method\SFAMWLM070824SMA.M
 Quant Title : SFAM01.0

TIC Library : C:\Database\NIST20.L
 TIC Integration Parameters: LSCINT.P

 Peak Number 2 (DEL) Alkane: Cyclic11.227 Concentration Rank 29

R.T.	EstConc	Area	Relative to ISTD	R.T.
11.227	2.12 ug/L	66513	Chlorobenzene-d5	11.629

Hit# of 5	Tentative ID	MW	MolForm	CAS#	Qual
1	Cyclohexane, 1,1,3-trimethyl-	126	C9H18	003073-66-3	87
2	Cyclohexane, 1,1,3-trimethyl-	126	C9H18	003073-66-3	87
3	Cyclohexane, 1,1,3-trimethyl-	126	C9H18	003073-66-3	83
4	Cyclohexane, 1,1,3-trimethyl-	126	C9H18	003073-66-3	80
5	6-Methyl-hept-2-yn-4-ol	126	C8H14O	060018-69-1	64



Data Path : Z:\voasrv\HPCHEM1\MSVOA_W\Data\VW070924\
 Data File : VW029490.D
 Acq On : 09 Jul 2024 17:46
 Operator : SY/MD
 Sample : P3177-08
 Misc : 5.36g/10mL/MSVOA_W/SOIL/A
 ALS Vial : 12 Sample Multiplier: 1

Instrument :
 MSVOA_W
 ClientSampleId :
 A4BS6

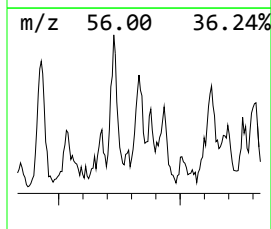
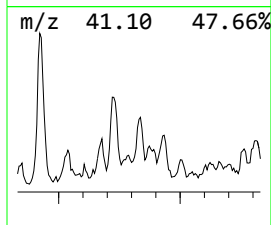
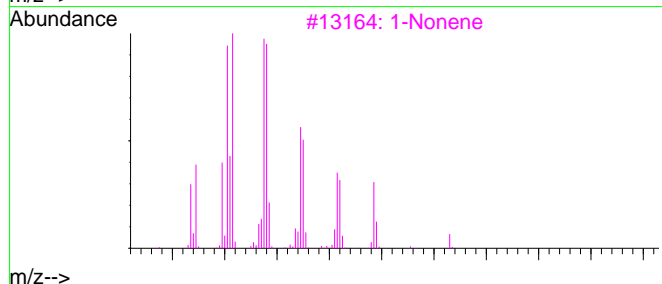
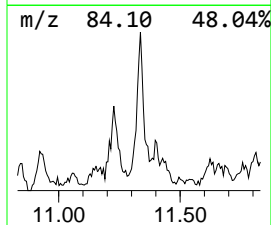
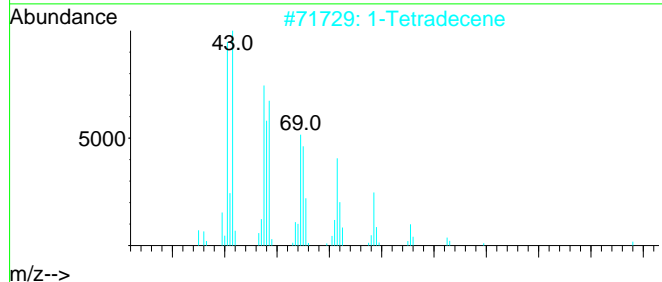
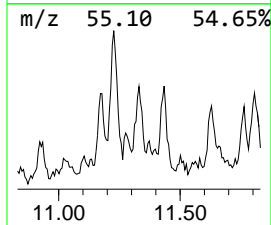
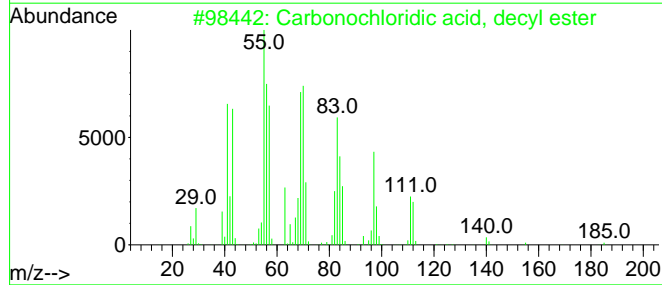
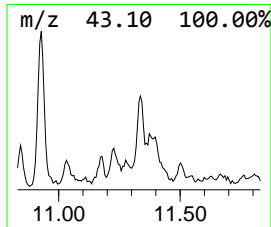
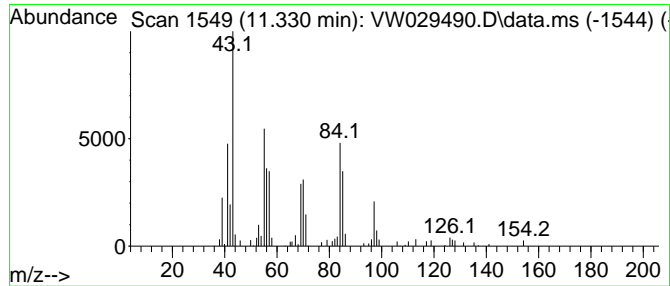
Quant Method : Z:\voasrv\HPCHEM1\MSVOA_W\Method\SFAMWLM070824SMA.M
 Quant Title : SFAM01.0

TIC Library : C:\Database\NIST20.L
 TIC Integration Parameters: LSCINT.P

 Peak Number 3 unknown-01 Concentration Rank 33

R.T.	EstConc	Area	Relative to ISTD	R.T.
11.331	1.58 ug/L	49473	Chlorobenzene-d5	11.629

Hit#	of	Tentative ID	MW	MolForm	CAS#	Qual
1	5	Carbonochloridic acid, decyl ester	220	C11H21ClO2	055488-51-2	47
2		1-Tetradecene	196	C14H28	001120-36-1	47
3		1-Nonene	126	C9H18	000124-11-8	46
4		1-Octene, 4-methyl-	126	C9H18	013151-12-7	38
5		2,4,6,8-Tetramethyl-1-undecene	210	C15H30	059920-26-2	35



Data Path : Z:\voasrv\HPCHEM1\MSVOA_W\Data\VW070924\
 Data File : VW029490.D
 Acq On : 09 Jul 2024 17:46
 Operator : SY/MD
 Sample : P3177-08
 Misc : 5.36g/10mL/MSVOA_W/SOIL/A
 ALS Vial : 12 Sample Multiplier: 1

Instrument :
 MSVOA_W
 ClientSampleId :
 A4BS6

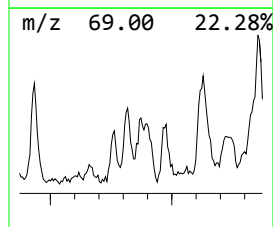
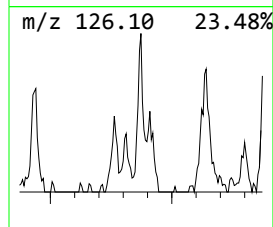
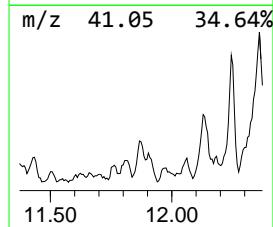
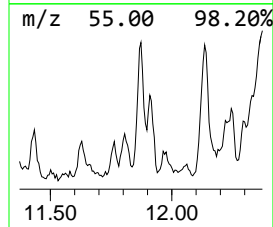
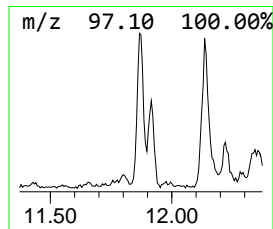
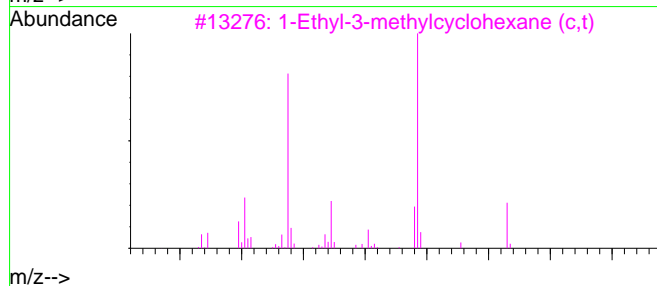
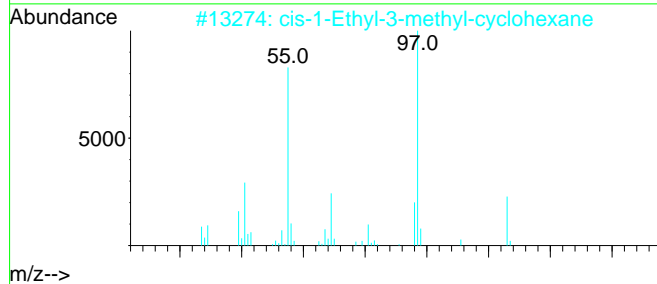
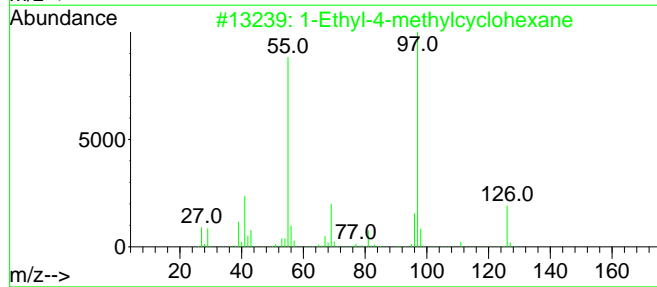
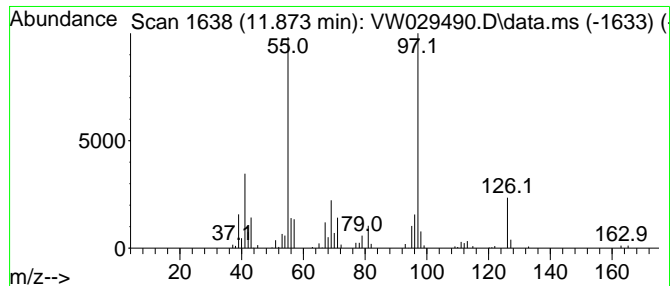
Quant Method : Z:\voasrv\HPCHEM1\MSVOA_W\Method\SFAMWLM070824SMA.M
 Quant Title : SFAM01.0

TIC Library : C:\Database\NIST20.L
 TIC Integration Parameters: LSCINT.P

 Peak Number 4 (DEL) Alkane: Cyclic11.873 Concentration Rank 34

R.T.	EstConc	Area	Relative to ISTD	R.T.
11.873	1.48 ug/L	46542	Chlorobenzene-d5	11.629

Hit# of 5	Tentative ID	MW	MolForm	CAS#	Qual
1	1-Ethyl-4-methylcyclohexane	126	C9H18	003728-56-1	87
2	cis-1-Ethyl-3-methyl-cyclohexane	126	C9H18	019489-10-2	81
3	1-Ethyl-3-methylcyclohexane (c,t)	126	C9H18	003728-55-0	81
4	Cyclohexane, 1-ethyl-4-methyl-, ...	126	C9H18	006236-88-0	81
5	Cyclohexane, 1-ethyl-4-methyl-, ...	126	C9H18	006236-88-0	81



Data Path : Z:\voasrv\HPCHEM1\MSVOA_W\Data\VW070924\
 Data File : VW029490.D
 Acq On : 09 Jul 2024 17:46
 Operator : SY/MD
 Sample : P3177-08
 Misc : 5.36g/10mL/MSVOA_W/SOIL/A
 ALS Vial : 12 Sample Multiplier: 1

Instrument :
 MSVOA_W
 ClientSampleId :
 A4BS6

Quant Method : Z:\voasrv\HPCHEM1\MSVOA_W\Method\SFAMWLM070824SMA.M
 Quant Title : SFAM01.0

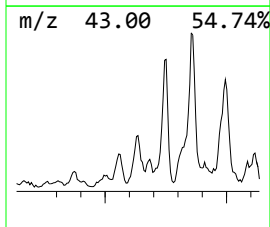
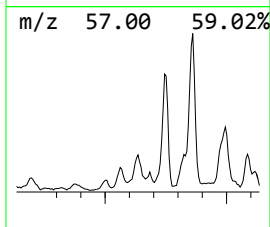
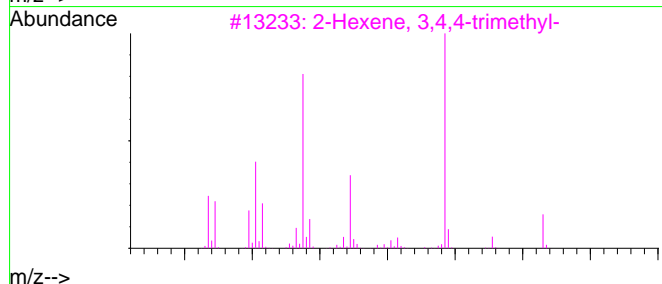
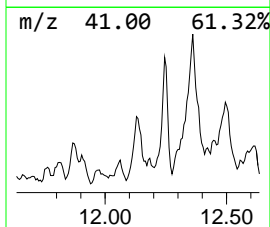
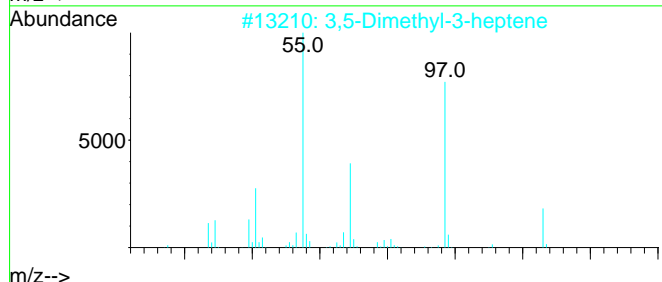
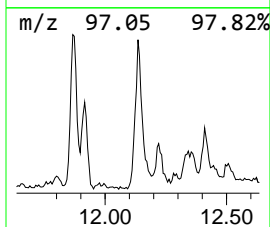
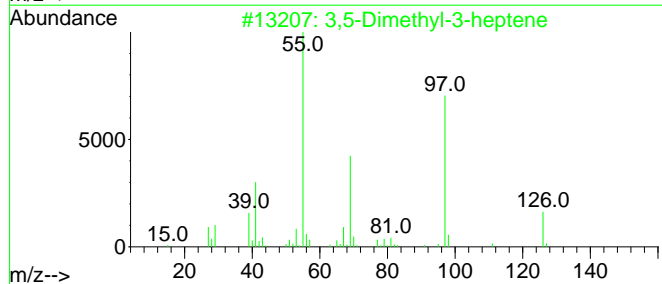
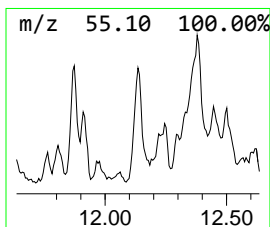
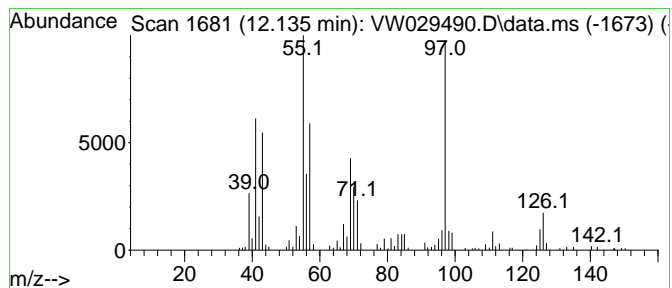
TIC Library : C:\Database\NIST20.L

TIC Integration Parameters: LSCINT.P

 Peak Number 5 (DEL) Alkane: Straight-Chai... Concentration Rank 18

R.T.	EstConc	Area	Relative to ISTD	R.T.
12.135	3.56 ug/L	111481	Chlorobenzene-d5	11.629

Hit# of 5	Tentative ID	MW	MolForm	CAS#	Qual
1	3,5-Dimethyl-3-heptene	126	C9H18	059643-68-4	64
2	3,5-Dimethyl-3-heptene	126	C9H18	059643-68-4	64
3	2-Hexene, 3,4,4-trimethyl-	126	C9H18	053941-19-8	58
4	Cyclohexane, 1,1-dimethyl-	112	C8H16	000590-66-9	58
5	Cyclohexane, 1-ethyl-2-methyl-, ...	126	C9H18	004923-78-8	58



Data Path : Z:\voasrv\HPCHEM1\MSVOA_W\Data\VW070924\
 Data File : VW029490.D
 Acq On : 09 Jul 2024 17:46
 Operator : SY/MD
 Sample : P3177-08
 Misc : 5.36g/10mL/MSVOA_W/SOIL/A
 ALS Vial : 12 Sample Multiplier: 1

Instrument :
 MSVOA_W
 ClientSampleId :
 A4BS6

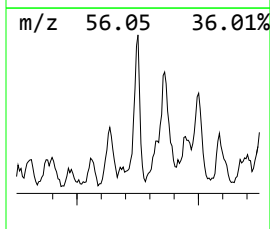
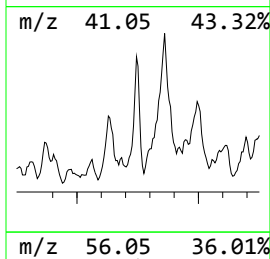
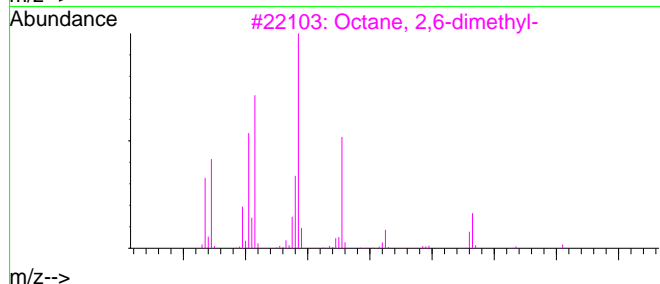
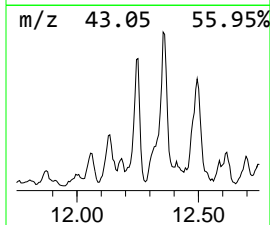
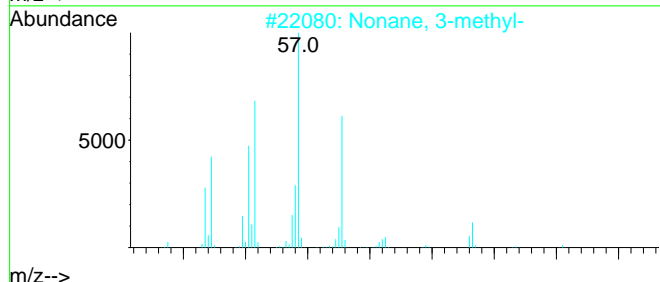
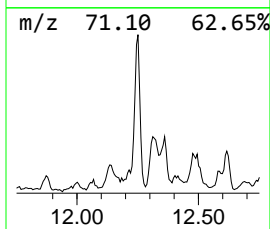
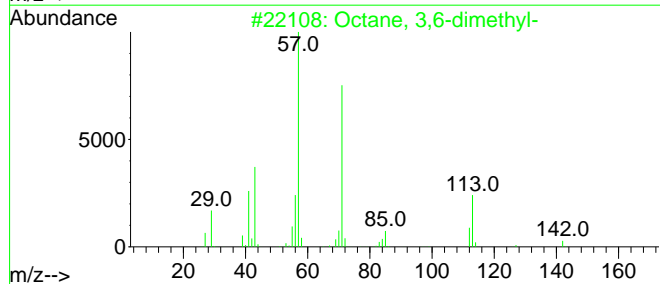
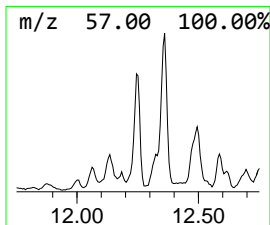
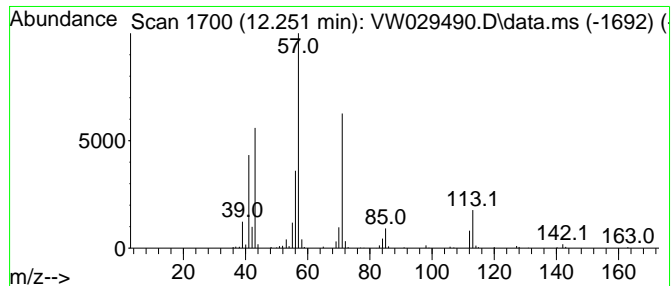
Quant Method : Z:\voasrv\HPCHEM1\MSVOA_W\Method\SFAMWLM070824SMA.M
 Quant Title : SFAM01.0

TIC Library : C:\Database\NIST20.L
 TIC Integration Parameters: LSCINT.P

 Peak Number 6 (DEL) Alkane: Straight-Chai... Concentration Rank 17

R.T.	EstConc	Area	Relative to ISTD	R.T.
12.251	3.56 ug/L	111679	Chlorobenzene-d5	11.629

Hit#	of	Tentative ID	MW	MolForm	CAS#	Qual
1	5	Octane, 3,6-dimethyl-	142	C10H22	015869-94-0	91
2		Nonane, 3-methyl-	142	C10H22	005911-04-6	90
3		Octane, 2,6-dimethyl-	142	C10H22	002051-30-1	90
4		Octane, 2,6-dimethyl-	142	C10H22	002051-30-1	87
5		Nonane, 3-methyl-	142	C10H22	005911-04-6	87



Data Path : Z:\voasrv\HPCHEM1\MSVOA_W\Data\VW070924\
 Data File : VW029490.D
 Acq On : 09 Jul 2024 17:46
 Operator : SY/MD
 Sample : P3177-08
 Misc : 5.36g/10mL/MSVOA_W/SOIL/A
 ALS Vial : 12 Sample Multiplier: 1

Instrument :
 MSVOA_W
 ClientSampleId :
 A4BS6

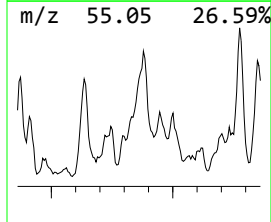
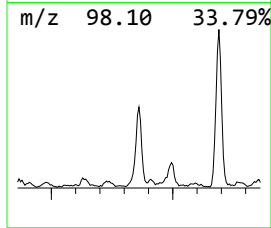
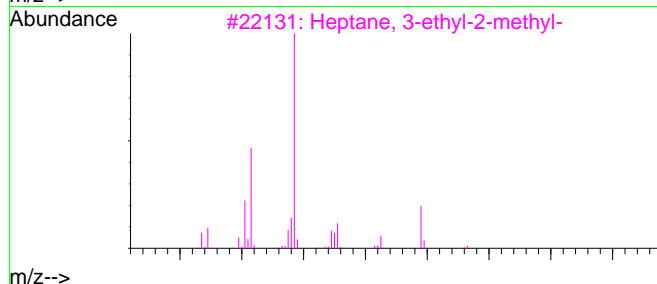
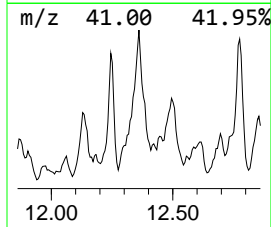
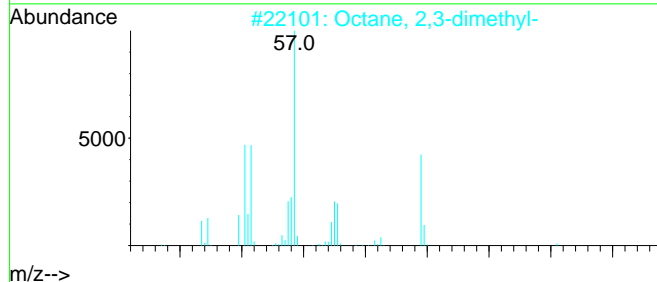
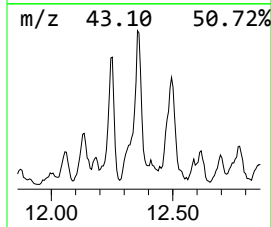
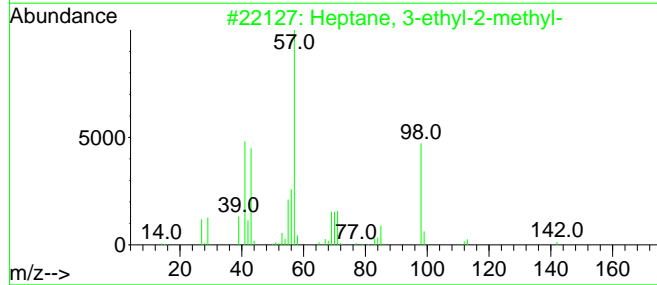
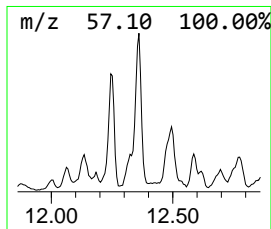
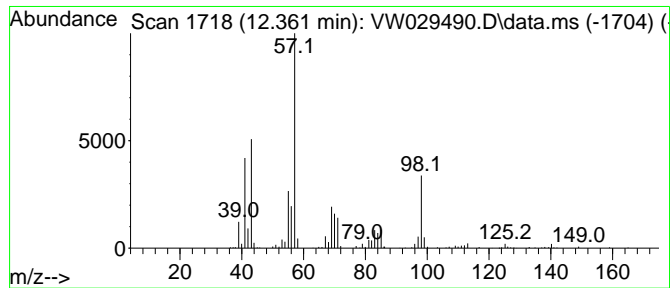
Quant Method : Z:\voasrv\HPCHEM1\MSVOA_W\Method\SFAMWLM070824SMA.M
 Quant Title : SFAM01.0

TIC Library : C:\Database\NIST20.L
 TIC Integration Parameters: LSCINT.P

 Peak Number 7 (DEL) Alkane: Straight-Chai... Concentration Rank 5

R.T.	EstConc	Area	Relative to ISTD	R.T.
12.361	9.63 ug/L	301986	Chlorobenzene-d5	11.629

Hit#	of	Tentative ID	MW	MolForm	CAS#	Qual
1	5	Heptane, 3-ethyl-2-methyl-	142	C10H22	014676-29-0	78
2		Octane, 2,3-dimethyl-	142	C10H22	007146-60-3	64
3		Heptane, 3-ethyl-2-methyl-	142	C10H22	014676-29-0	53
4		Dichloroacetic acid, nonyl ester	254	C11H20Cl2O2	083004-99-3	53
5		2-Chloropropionic acid, decyl e...	248	C13H25ClO2	086711-78-6	50



Data Path : Z:\voasrv\HPCHEM1\MSVOA_W\Data\VW070924\
 Data File : VW029490.D
 Acq On : 09 Jul 2024 17:46
 Operator : SY/MD
 Sample : P3177-08
 Misc : 5.36g/10mL/MSVOA_W/SOIL/A
 ALS Vial : 12 Sample Multiplier: 1

Instrument :
 MSVOA_W
 ClientSampleId :
 A4BS6

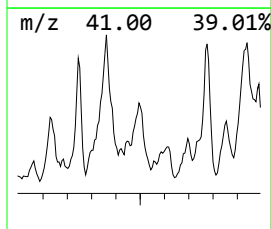
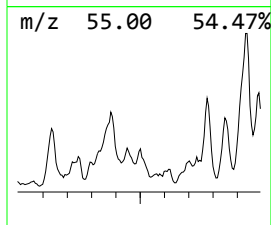
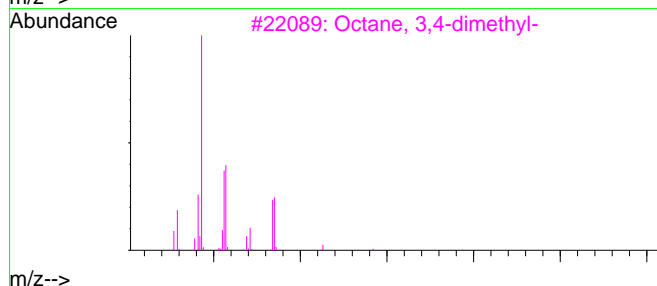
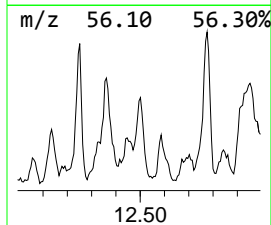
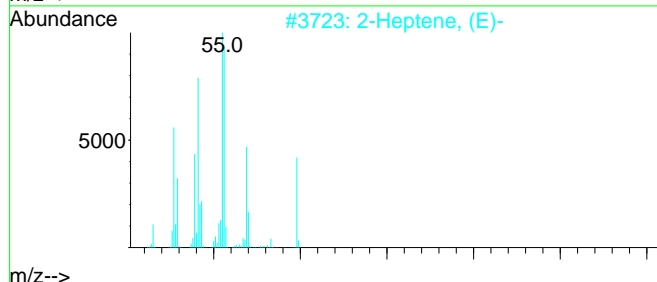
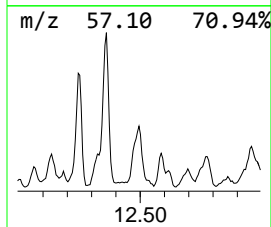
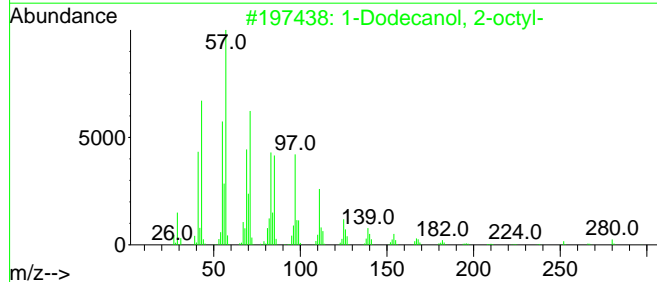
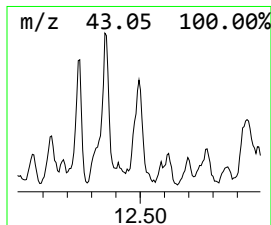
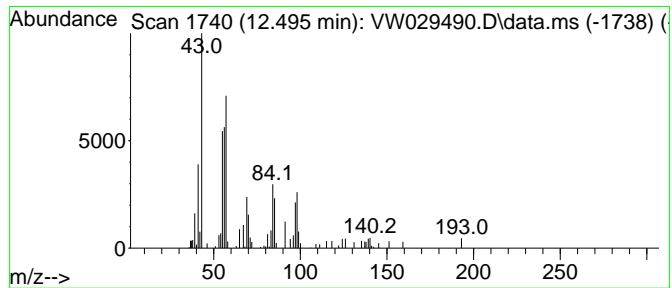
Quant Method : Z:\voasrv\HPCHEM1\MSVOA_W\Method\SFAMWLM070824SMA.M
 Quant Title : SFAM01.0

TIC Library : C:\Database\NIST20.L
 TIC Integration Parameters: LSCINT.P

 Peak Number 8 unknown-02 Concentration Rank 31

R.T.	EstConc	Area	Relative to ISTD	R.T.
12.495	2.03 ug/L	63630	Chlorobenzene-d5	11.629

Hit#	of	Tentative ID	MW	MolForm	CAS#	Qual
1	5	1-Dodecanol, 2-octyl-	298	C20H42O	005333-42-6	38
2		2-Heptene, (E)-	98	C7H14	014686-13-6	27
3		Octane, 3,4-dimethyl-	142	C10H22	015869-92-8	27
4		Butane, 2,2,3-trimethyl-	100	C7H16	000464-06-2	27
5		Carbonic acid, nonyl vinyl ester	214	C12H22O3	1000383-25-6	22



Data Path : Z:\voasrv\HPCHEM1\MSVOA_W\Data\VW070924\
 Data File : VW029490.D
 Acq On : 09 Jul 2024 17:46
 Operator : SY/MD
 Sample : P3177-08
 Misc : 5.36g/10mL/MSVOA_W/SOIL/A
 ALS Vial : 12 Sample Multiplier: 1

Instrument :
 MSVOA_W
 ClientSampleId :
 A4BS6

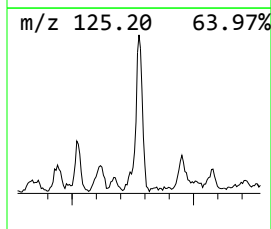
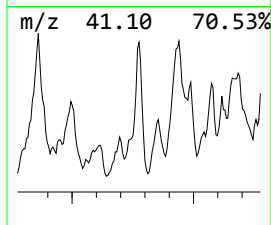
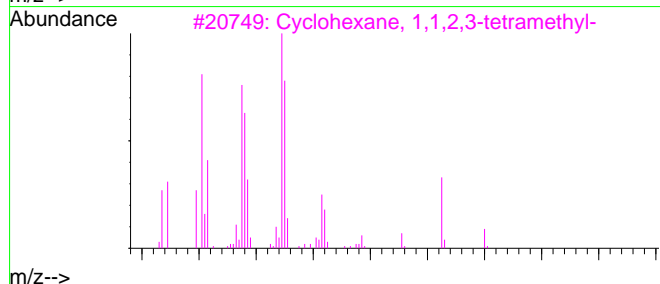
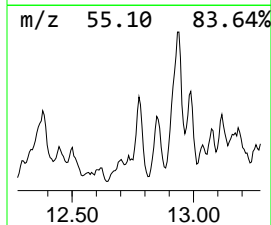
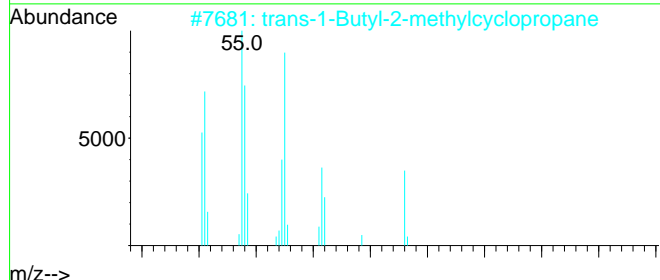
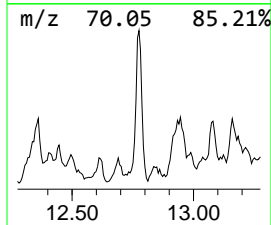
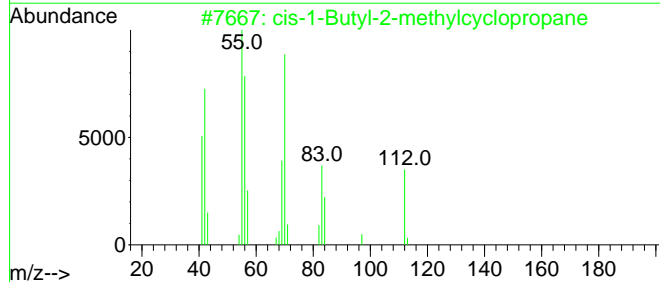
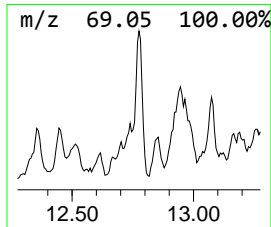
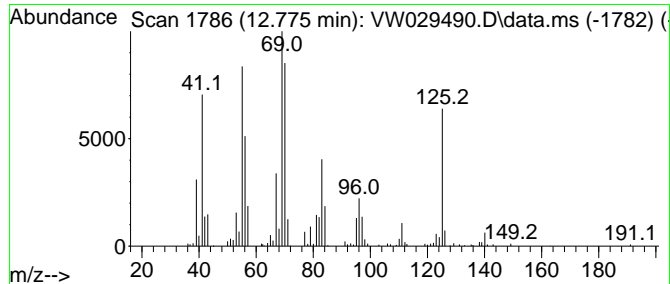
Quant Method : Z:\voasrv\HPCHEM1\MSVOA_W\Method\SFAMWLM070824SMA.M
 Quant Title : SFAM01.0

TIC Library : C:\Database\NIST20.L
 TIC Integration Parameters: LSCINT.P

 Peak Number 10 (DEL) Alkane: Cyclic12.775 Concentration Rank 6

R.T.	EstConc	Area	Relative to ISTD	R.T.
12.775	9.62 ug/L	161817	1,4-Dichlorobenzene-d4	13.556

Hit#	of 5	Tentative ID	MW	MolForm	CAS#	Qual
1		cis-1-Butyl-2-methylcyclopropane	112	C8H16	038851-69-3	50
2		trans-1-Butyl-2-methylcyclopropane	112	C8H16	038851-70-6	50
3		Cyclohexane, 1,1,2,3-tetramethyl-	140	C10H20	006783-92-2	49
4		4-Octene, 2,6-dimethyl-, [S-(E)]-	140	C10H20	062960-76-3	47
5		Cyclohexane, 1,1,3,5-tetramethyl...	140	C10H20	050876-31-8	43



Data Path : Z:\voasrv\HPCHEM1\MSVOA_W\Data\VW070924\
 Data File : VW029490.D
 Acq On : 09 Jul 2024 17:46
 Operator : SY/MD
 Sample : P3177-08
 Misc : 5.36g/10mL/MSVOA_W/SOIL/A
 ALS Vial : 12 Sample Multiplier: 1

Instrument :
 MSVOA_W
 ClientSampleId :
 A4BS6

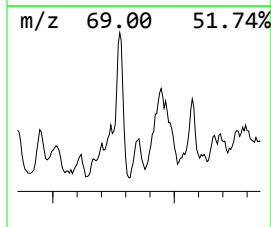
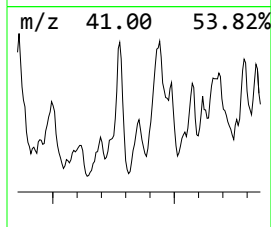
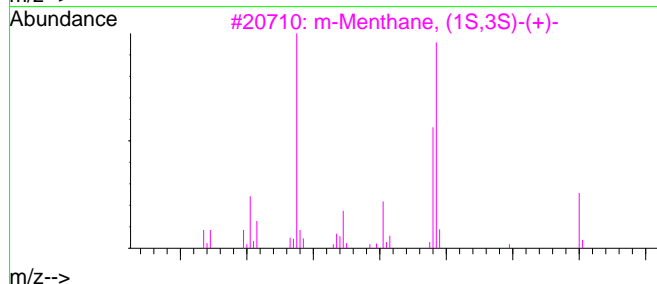
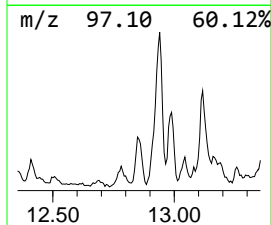
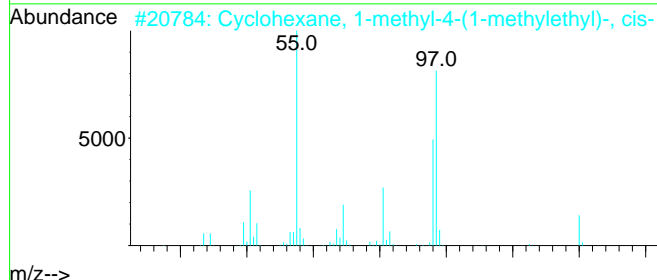
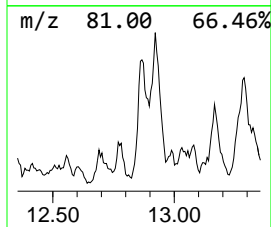
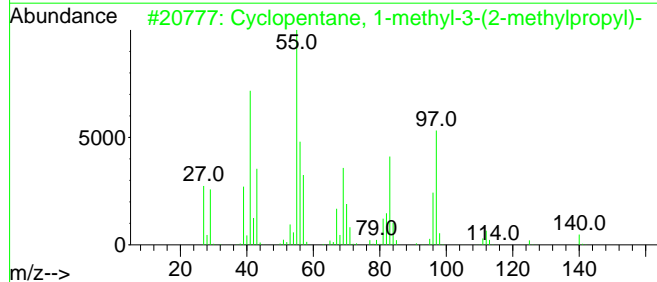
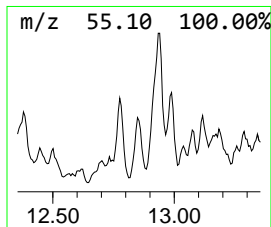
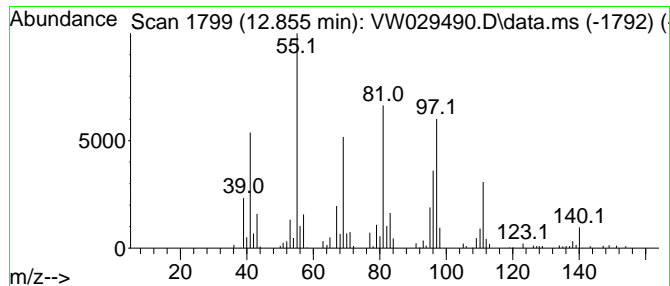
Quant Method : Z:\voasrv\HPCHEM1\MSVOA_W\Method\SFAMWLM070824SMA.M
 Quant Title : SFAM01.0

TIC Library : C:\Database\NIST20.L
 TIC Integration Parameters: LSCINT.P

 Peak Number 11 (DEL) Alkane: Cyclic12.855 Concentration Rank 10

R.T.	EstConc	Area	Relative to ISTD	R.T.
12.855	6.02 ug/L	101179	1,4-Dichlorobenzene-d4	13.556

Hit#	of	Tentative ID	MW	MolForm	CAS#	Qual
1	5	Cyclopentane, 1-methyl-3-(2-meth...	140	C10H20	029053-04-1	58
2		Cyclohexane, 1-methyl-4-(1-methy...	140	C10H20	006069-98-3	52
3		m-Menthane, (1S,3S)-(+)-	140	C10H20	013837-67-7	50
4		1-Methyl-4-(1-methylethyl)-cyclo...	140	C10H20	000099-82-1	49
5		Cyclohexane, 1-methyl-4-(1-methy...	140	C10H20	001678-82-6	49



Data Path : Z:\voasrv\HPCHEM1\MSVOA_W\Data\VW070924\
 Data File : VW029490.D
 Acq On : 09 Jul 2024 17:46
 Operator : SY/MD
 Sample : P3177-08
 Misc : 5.36g/10mL/MSVOA_W/SOIL/A
 ALS Vial : 12 Sample Multiplier: 1

Instrument :
 MSVOA_W
 ClientSampleId :
 A4BS6

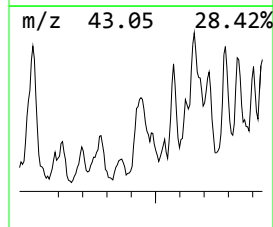
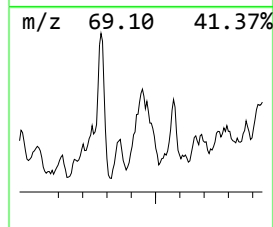
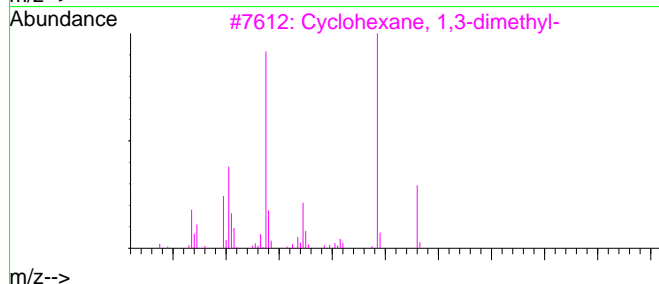
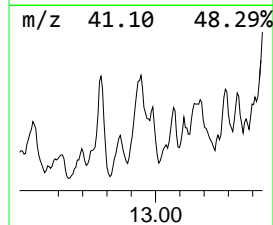
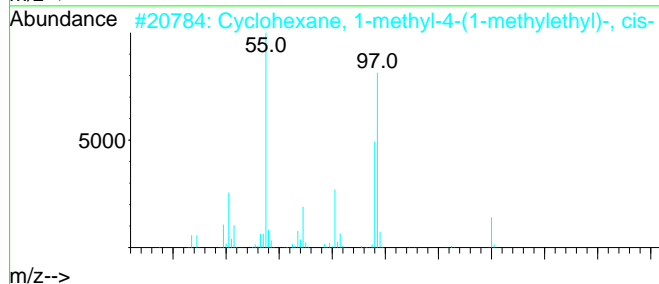
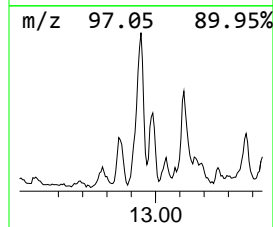
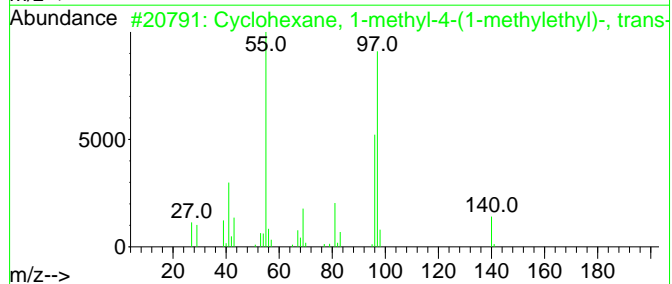
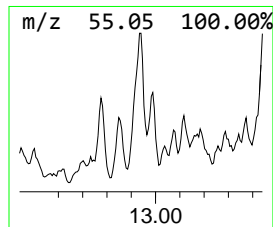
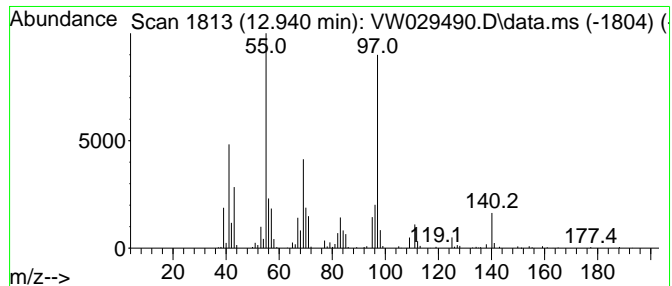
Quant Method : Z:\voasrv\HPCHEM1\MSVOA_W\Method\SFAMWLM070824SMA.M
 Quant Title : SFAM01.0

TIC Library : C:\Database\NIST20.L
 TIC Integration Parameters: LSCINT.P

 Peak Number 12 (DEL) Alkane: Cyclic12.940 Concentration Rank 3

R.T.	EstConc	Area	Relative to ISTD	R.T.
12.940	14.49 ug/L	243677	1,4-Dichlorobenzene-d4	13.556

Hit#	of	Tentative ID	MW	MolForm	CAS#	Qual
1	5	Cyclohexane, 1-methyl-4-(1-methy...	140	C10H20	001678-82-6	52
2		Cyclohexane, 1-methyl-4-(1-methy...	140	C10H20	006069-98-3	52
3		Cyclohexane, 1,3-dimethyl-	112	C8H16	000591-21-9	52
4		Cyclohexane, 1,3-dimethyl-, cis-	112	C8H16	000638-04-0	52
5		Cyclohexane, 1,3-dimethyl-, cis-	112	C8H16	000638-04-0	52



Data Path : Z:\voasrv\HPCHEM1\MSVOA_W\Data\VW070924\
 Data File : VW029490.D
 Acq On : 09 Jul 2024 17:46
 Operator : SY/MD
 Sample : P3177-08
 Misc : 5.36g/10mL/MSVOA_W/SOIL/A
 ALS Vial : 12 Sample Multiplier: 1

Instrument :
 MSVOA_W
 ClientSampleId :
 A4BS6

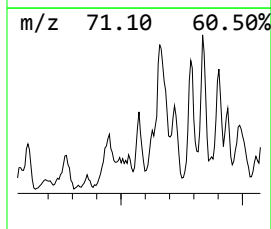
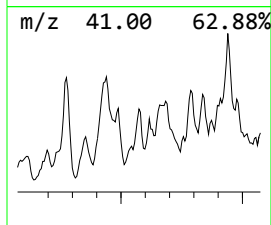
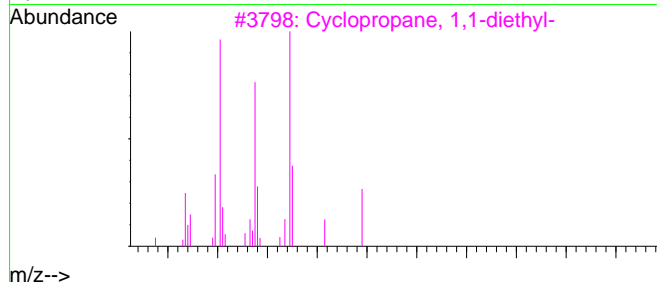
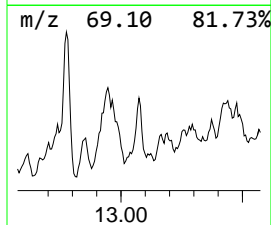
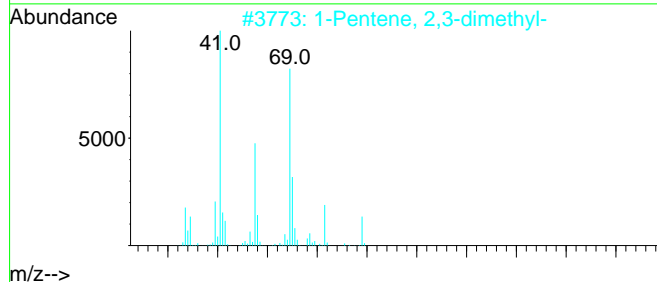
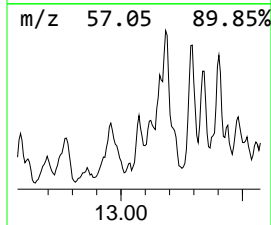
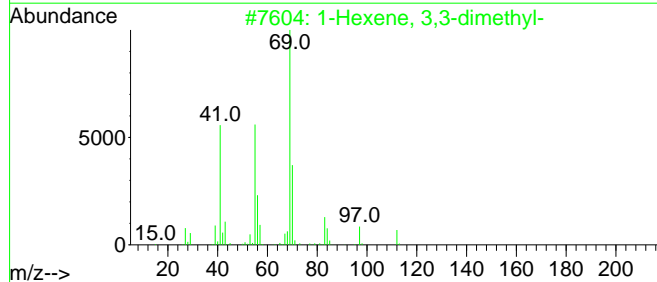
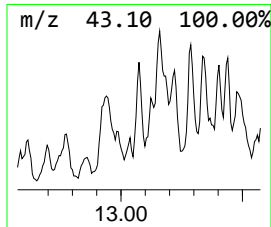
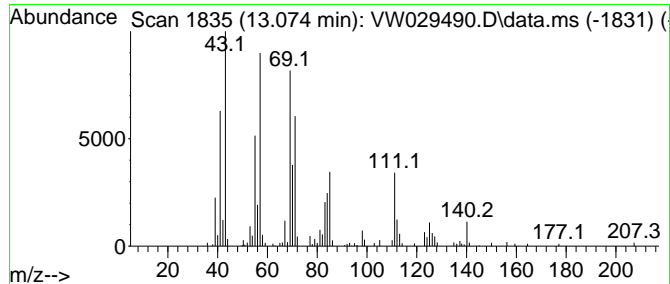
Quant Method : Z:\voasrv\HPCHEM1\MSVOA_W\Method\SFAMWLM070824SMA.M
 Quant Title : SFAM01.0

TIC Library : C:\Database\NIST20.L
 TIC Integration Parameters: LSCINT.P

 Peak Number 13 (DEL) Alkane: Straight-Chai... Concentration Rank 22

R.T.	EstConc	Area	Relative to ISTD	R.T.
13.074	3.18 ug/L	53407	1,4-Dichlorobenzene-d4	13.556

Hit#	of 5	Tentative ID	MW	MolForm	CAS#	Qual
1		1-Hexene, 3,3-dimethyl-	112	C8H16	003404-77-1	43
2		1-Pentene, 2,3-dimethyl-	98	C7H14	003404-72-6	43
3		Cyclopropane, 1,1-diethyl-	98	C7H14	001003-19-6	42
4		1-Pentene, 2,3-dimethyl-	98	C7H14	003404-72-6	41
5		Cyclohexane, 1,3,5-trimethyl-, (...	126	C9H18	001795-26-2	38



Data Path : Z:\voasrv\HPCHEM1\MSVOA_W\Data\VW070924\
 Data File : VW029490.D
 Acq On : 09 Jul 2024 17:46
 Operator : SY/MD
 Sample : P3177-08
 Misc : 5.36g/10mL/MSVOA_W/SOIL/A
 ALS Vial : 12 Sample Multiplier: 1

Instrument :
 MSVOA_W
 ClientSampleId :
 A4BS6

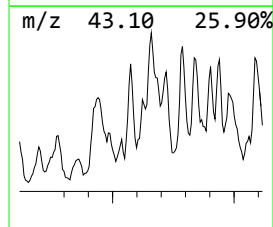
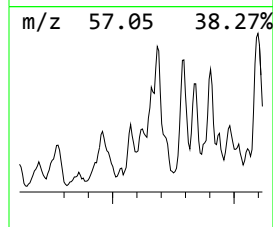
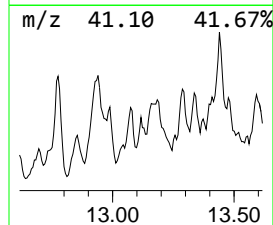
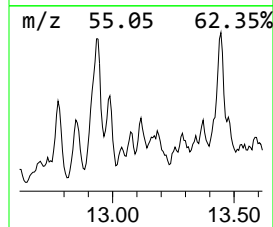
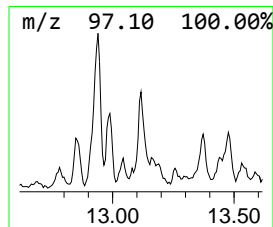
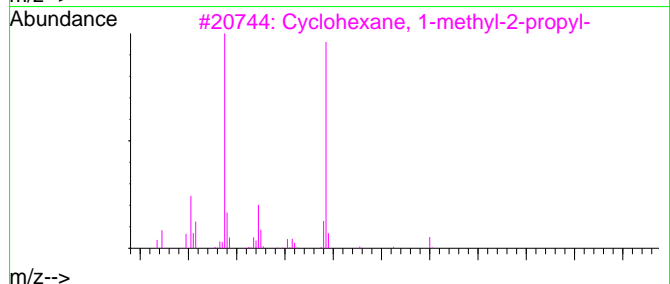
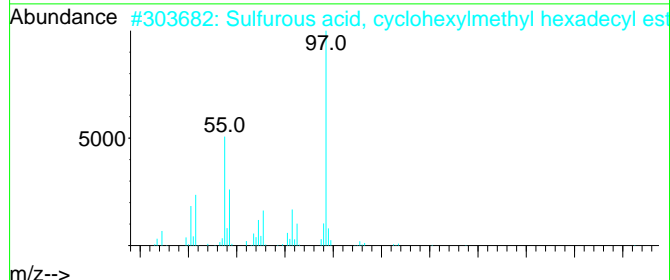
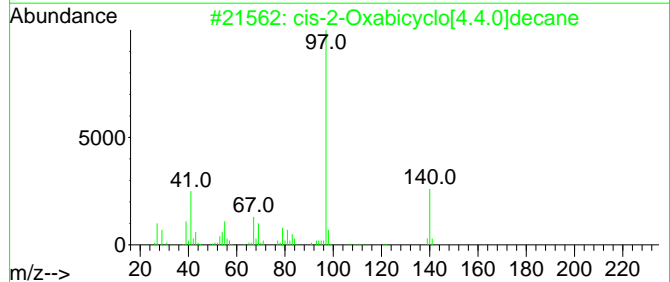
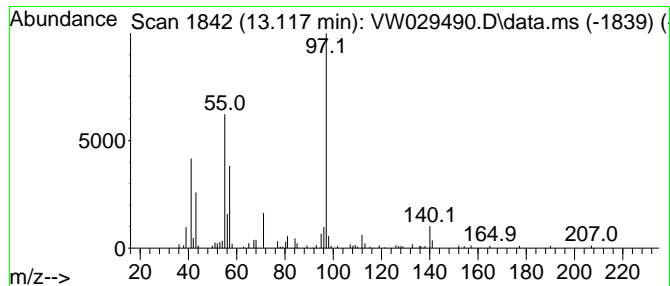
Quant Method : Z:\voasrv\HPCHEM1\MSVOA_W\Method\SFAMWLM070824SMA.M
 Quant Title : SFAM01.0

TIC Library : C:\Database\NIST20.L
 TIC Integration Parameters: LSCINT.P

 Peak Number 14 cis-2-Oxabicyclo[4.4.0]decane Concentration Rank 32

R.T.	EstConc	Area	Relative to ISTD	R.T.
13.117	1.94 ug/L	32595	1,4-Dichlorobenzene-d4	13.556

Hit#	of 5	Tentative ID	MW	MolForm	CAS#	Qual
1		cis-2-Oxabicyclo[4.4.0]decane	140	C9H16O	060416-19-5	59
2		Sulfurous acid, cyclohexylmethyl...	402	C23H46O3S	1000309-22-4	59
3		Cyclohexane, 1-methyl-2-propyl-	140	C10H20	004291-79-6	59
4		Cyclohexane, 1,1-dimethyl-	112	C8H16	000590-66-9	53
5		5-Octen-4-one, 7-methyl-	140	C9H16O	032064-78-1	50



Data Path : Z:\voasrv\HPCHEM1\MSVOA_W\Data\VW070924\
 Data File : VW029490.D
 Acq On : 09 Jul 2024 17:46
 Operator : SY/MD
 Sample : P3177-08
 Misc : 5.36g/10mL/MSVOA_W/SOIL/A
 ALS Vial : 12 Sample Multiplier: 1

Instrument :
 MSVOA_W
 ClientSampleId :
 A4BS6

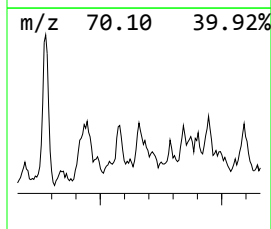
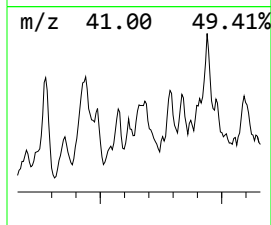
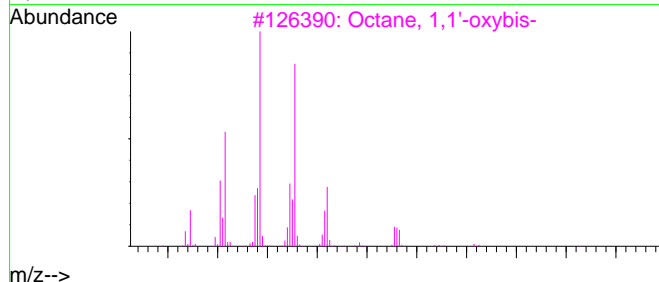
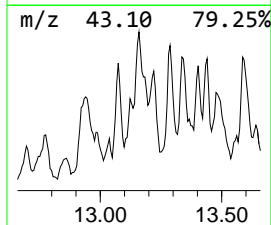
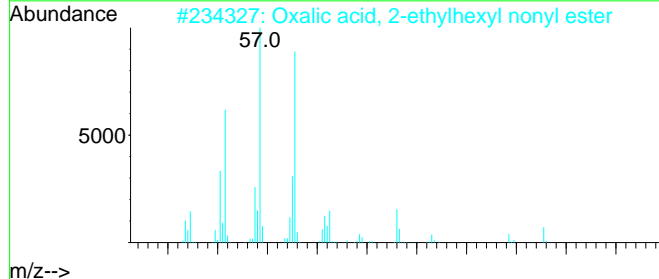
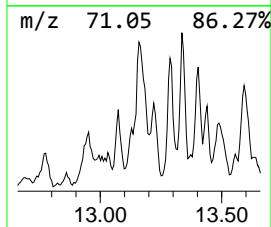
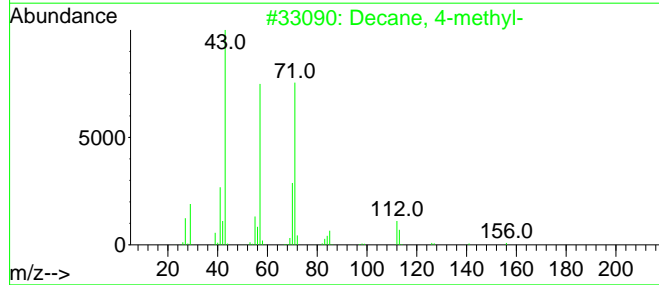
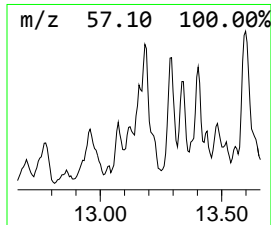
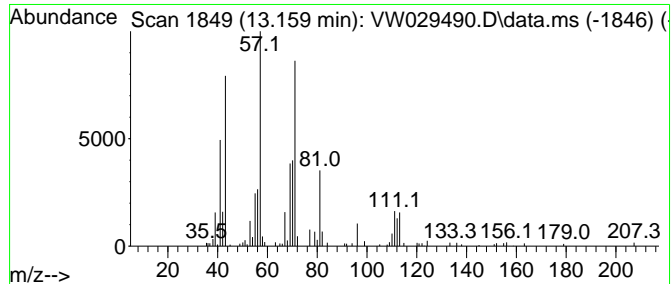
Quant Method : Z:\voasrv\HPCHEM1\MSVOA_W\Method\SFAMWLM070824SMA.M
 Quant Title : SFAM01.0

TIC Library : C:\Database\NIST20.L
 TIC Integration Parameters: LSCINT.P

 Peak Number 15 (DEL) Alkane: Straight-Chai... Concentration Rank 24

R.T.	EstConc	Area	Relative to ISTD	R.T.
13.159	2.51 ug/L	42182	1,4-Dichlorobenzene-d4	13.556

Hit#	of 5	Tentative ID	MW	MolForm	CAS#	Qual
1		Decane, 4-methyl-	156	C11H24	002847-72-5	72
2		Oxalic acid, 2-ethylhexyl nonyl ...	328	C19H36O4	1000309-39-2	64
3		Octane, 1,1'-oxybis-	242	C16H34O	000629-82-3	64
4		Decane, 4-methyl-	156	C11H24	002847-72-5	64
5		Oxalic acid, 2-ethylhexyl hexyl ...	286	C16H30O4	1000309-38-9	64



Data Path : Z:\voasrv\HPCHEM1\MSVOA_W\Data\VW070924\
 Data File : VW029490.D
 Acq On : 09 Jul 2024 17:46
 Operator : SY/MD
 Sample : P3177-08
 Misc : 5.36g/10mL/MSVOA_W/SOIL/A
 ALS Vial : 12 Sample Multiplier: 1

Instrument :
 MSVOA_W
 ClientSampleId :
 A4BS6

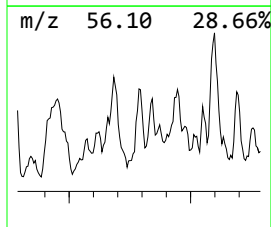
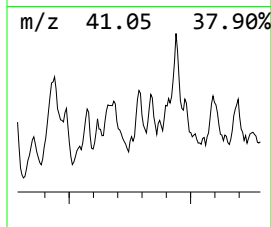
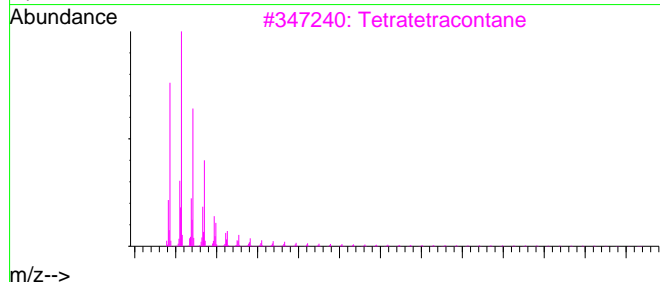
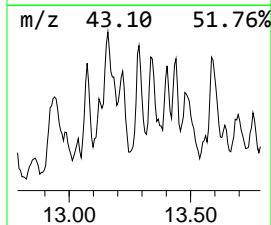
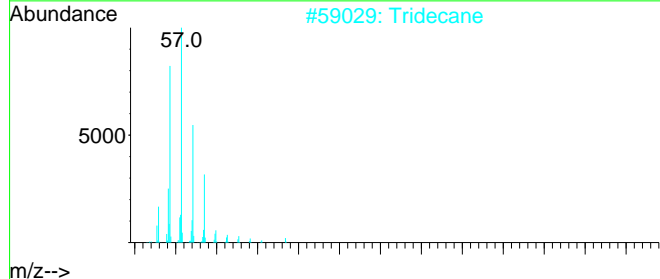
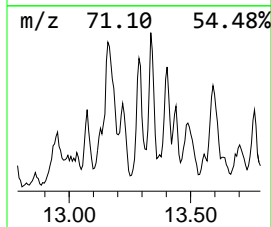
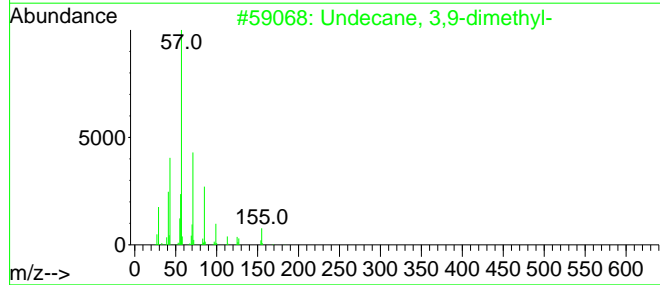
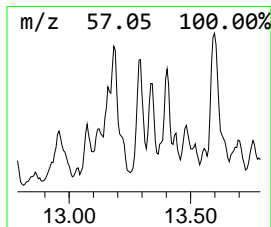
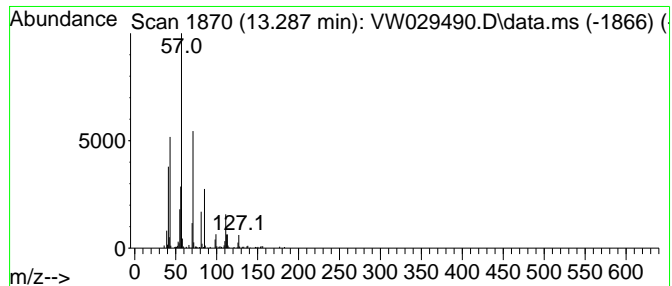
Quant Method : Z:\voasrv\HPCHEM1\MSVOA_W\Method\SFAMWLM070824SMA.M
 Quant Title : SFAM01.0

TIC Library : C:\Database\NIST20.L
 TIC Integration Parameters: LSCINT.P

 Peak Number 16 (DEL) Alkane: Straight-Chai... Concentration Rank 21

R.T.	EstConc	Area	Relative to ISTD	R.T.
13.288	3.37 ug/L	56738	1,4-Dichlorobenzene-d4	13.556

Hit#	of	Tentative ID	MW	MolForm	CAS#	Qual
1	5	Undecane, 3,9-dimethyl-	184	C13H28	017301-31-4	64
2		Tridecane	184	C13H28	000629-50-5	59
3		Tetratetracontane	619	C44H90	007098-22-8	59
4		Carbonic acid, eicosyl vinyl ester	368	C23H44O3	1000382-54-3	59
5		Oxalic acid, isobutyl nonyl ester	272	C15H28O4	1010309-37-4	59



Data Path : Z:\voasrv\HPCHEM1\MSVOA_W\Data\VW070924\
 Data File : VW029490.D
 Acq On : 09 Jul 2024 17:46
 Operator : SY/MD
 Sample : P3177-08
 Misc : 5.36g/10mL/MSVOA_W/SOIL/A
 ALS Vial : 12 Sample Multiplier: 1

Instrument :
 MSVOA_W
 ClientSampleId :
 A4BS6

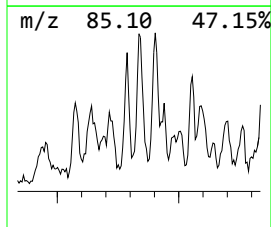
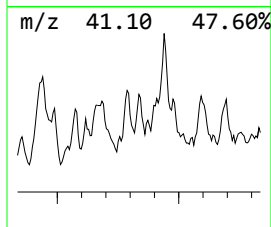
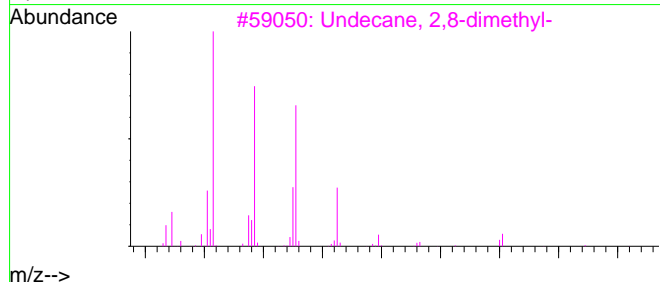
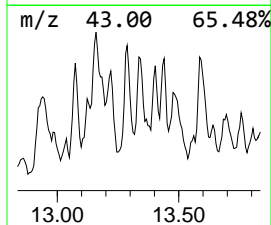
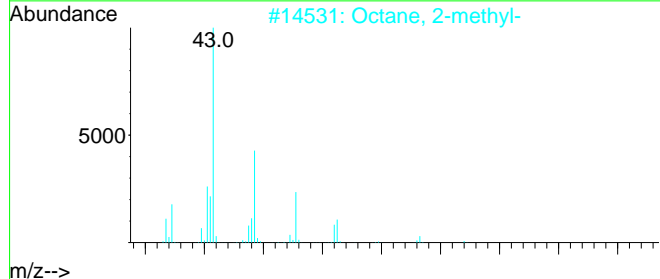
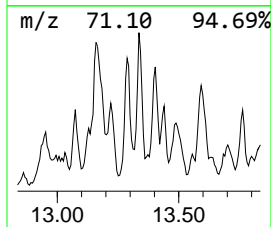
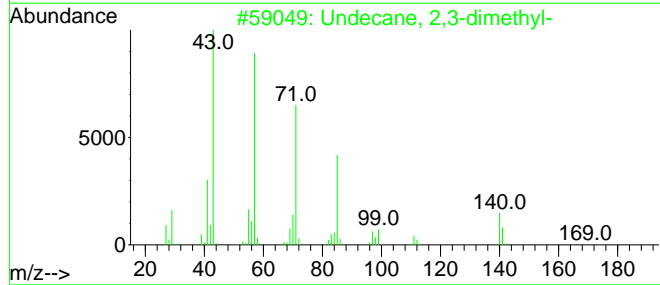
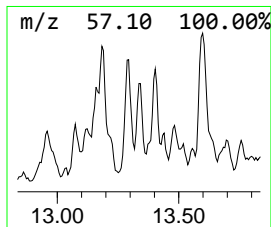
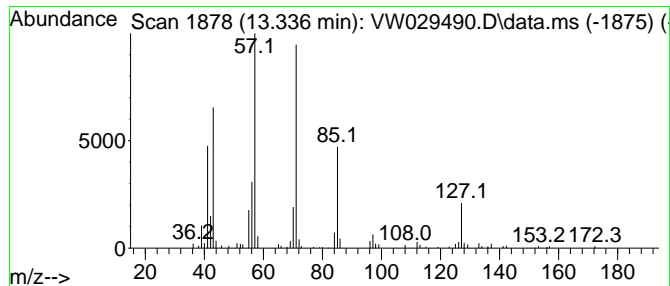
Quant Method : Z:\voasrv\HPCHEM1\MSVOA_W\Method\SFAMWLM070824SMA.M
 Quant Title : SFAM01.0

TIC Library : C:\Database\NIST20.L
 TIC Integration Parameters: LSCINT.P

 Peak Number 17 (DEL) Alkane: Straight-Chai... Concentration Rank 26

R.T.	EstConc	Area	Relative to ISTD	R.T.
13.336	2.24 ug/L	37729	1,4-Dichlorobenzene-d4	13.556

Hit# of 5	Tentative ID	MW	MolForm	CAS#	Qual
1	Undecane, 2,3-dimethyl-	184	C13H28	017312-77-5	64
2	Octane, 2-methyl-	128	C9H20	003221-61-2	64
3	Undecane, 2,8-dimethyl-	184	C13H28	017301-25-6	59
4	Hexadecane	226	C16H34	000544-76-3	59
5	Nonane, 3,7-dimethyl-	156	C11H24	017302-32-8	50



Data Path : Z:\voasrv\HPCHEM1\MSVOA_W\Data\VW070924\
 Data File : VW029490.D
 Acq On : 09 Jul 2024 17:46
 Operator : SY/MD
 Sample : P3177-08
 Misc : 5.36g/10mL/MSVOA_W/SOIL/A
 ALS Vial : 12 Sample Multiplier: 1

Instrument :
 MSVOA_W
 ClientSampleId :
 A4BS6

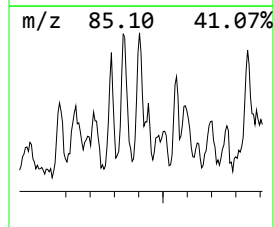
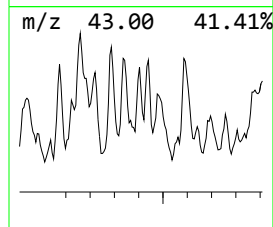
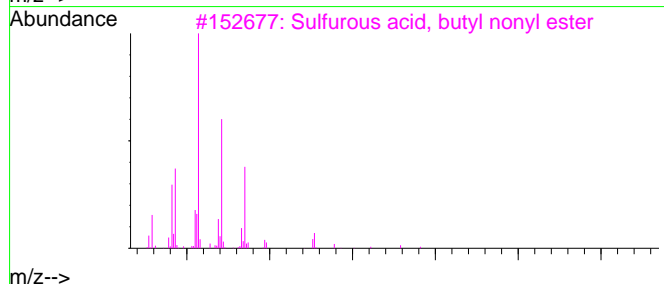
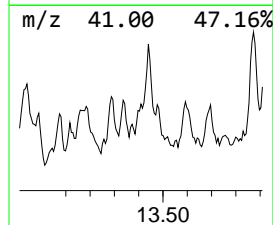
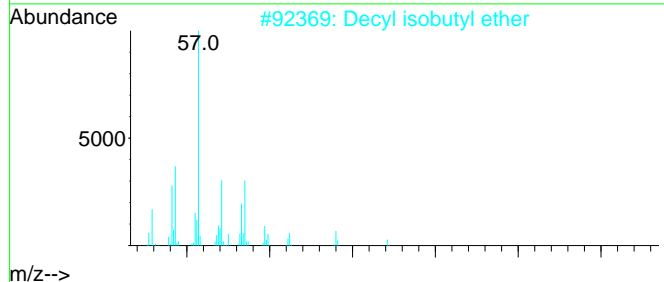
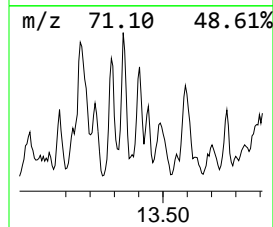
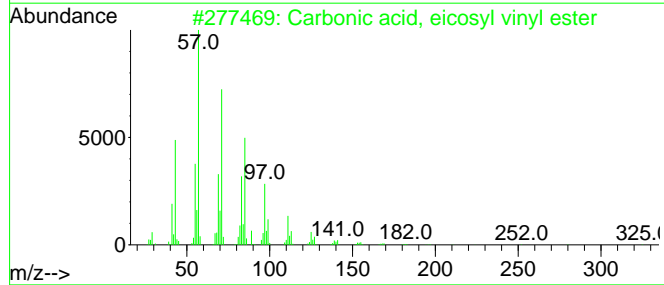
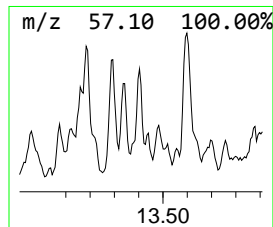
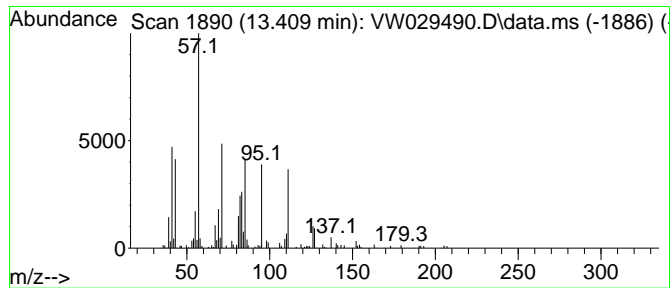
Quant Method : Z:\voasrv\HPCHEM1\MSVOA_W\Method\SFAMWLM070824SMA.M
 Quant Title : SFAM01.0

TIC Library : C:\Database\NIST20.L
 TIC Integration Parameters: LSCINT.P

 Peak Number 18 unknown-03 Concentration Rank 27

R.T.	EstConc	Area	Relative to ISTD	R.T.
13.409	2.24 ug/L	37700	1,4-Dichlorobenzene-d4	13.556

Hit#	of 5	Tentative ID	MW	MolForm	CAS#	Qual
1		Carbonic acid, eicosyl vinyl ester	368	C23H44O3	1000382-54-3	47
2		Decyl isobutyl ether	214	C14H30O	1010406-32-5	43
3		Sulfurous acid, butyl nonyl ester	264	C13H28O3S	1000309-17-6	43
4		1-Decanol, 2-hexyl-	242	C16H34O	002425-77-6	38
5		Dodecyl isobutyl ether	242	C16H34O	1000406-32-6	38



Data Path : Z:\voasrv\HPCHEM1\MSVOA_W\Data\VW070924\
 Data File : VW029490.D
 Acq On : 09 Jul 2024 17:46
 Operator : SY/MD
 Sample : P3177-08
 Misc : 5.36g/10mL/MSVOA_W/SOIL/A
 ALS Vial : 12 Sample Multiplier: 1

Instrument :
 MSVOA_W
 ClientSampleId :
 A4BS6

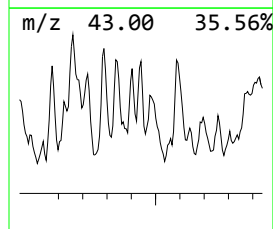
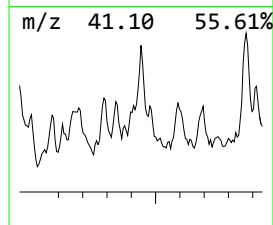
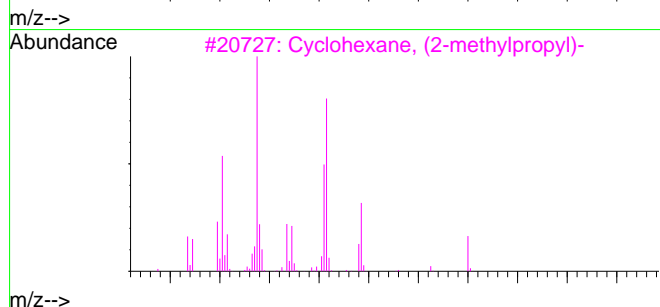
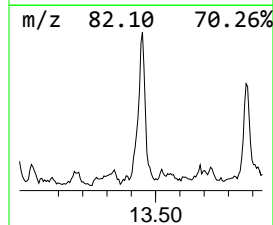
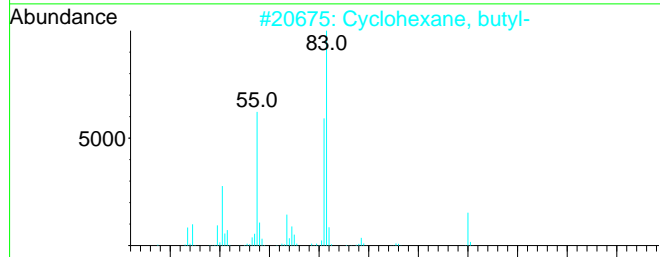
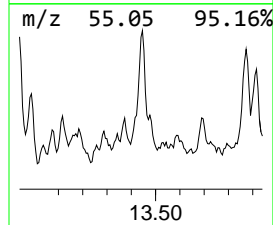
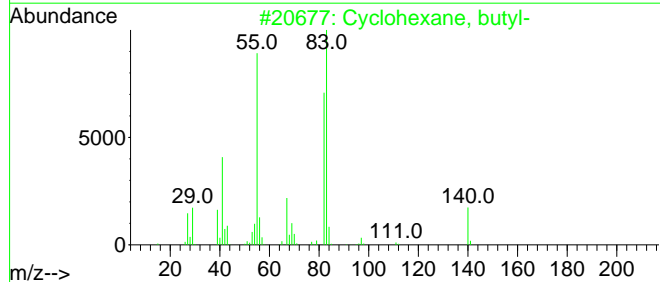
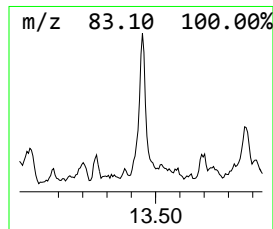
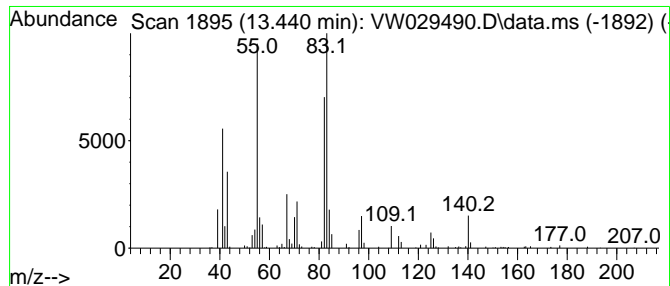
Quant Method : Z:\voasrv\HPCHEM1\MSVOA_W\Method\SFAMWLM070824SMA.M
 Quant Title : SFAM01.0

TIC Library : C:\Database\NIST20.L
 TIC Integration Parameters: LSCINT.P

 Peak Number 19 (DEL) Alkane: Cyclic13.440 Concentration Rank 11

R.T.	EstConc	Area	Relative to ISTD	R.T.
13.440	5.85 ug/L	98378	1,4-Dichlorobenzene-d4	13.556

Hit#	of	Tentative ID	MW	MolForm	CAS#	Qual
1	5	Cyclohexane, butyl-	140	C10H20	001678-93-9	76
2		Cyclohexane, butyl-	140	C10H20	001678-93-9	74
3		Cyclohexane, (2-methylpropyl)-	140	C10H20	001678-98-4	64
4		Cyclohexane, (1-methylethyl)-	126	C9H18	000696-29-7	64
5		Cyclohexane, propyl-	126	C9H18	001678-92-8	59



Data Path : Z:\voasrv\HPCHEM1\MSVOA_W\Data\VW070924\
 Data File : VW029490.D
 Acq On : 09 Jul 2024 17:46
 Operator : SY/MD
 Sample : P3177-08
 Misc : 5.36g/10mL/MSVOA_W/SOIL/A
 ALS Vial : 12 Sample Multiplier: 1

Instrument :
 MSVOA_W
 ClientSampleId :
 A4BS6

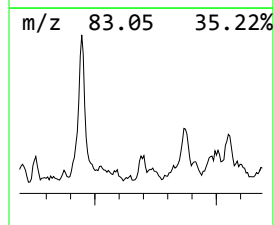
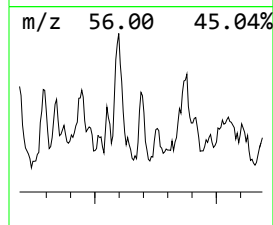
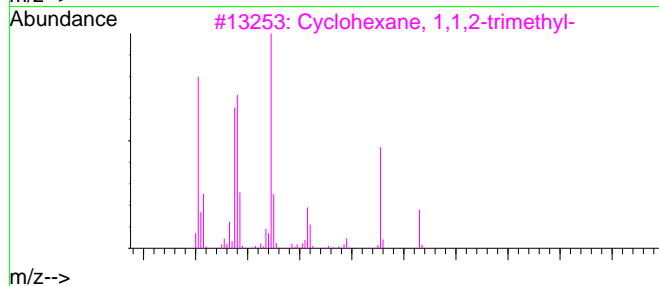
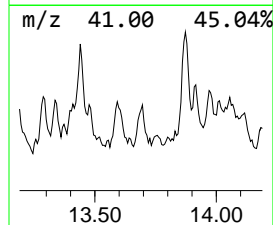
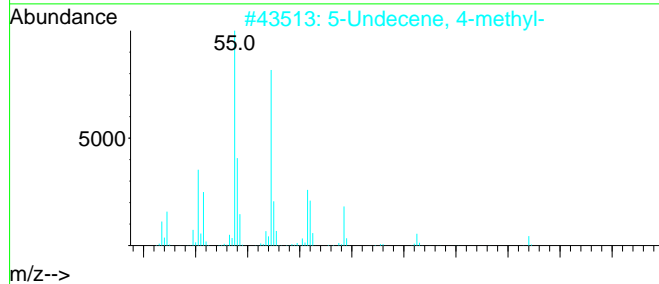
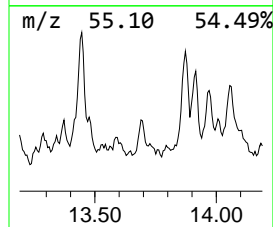
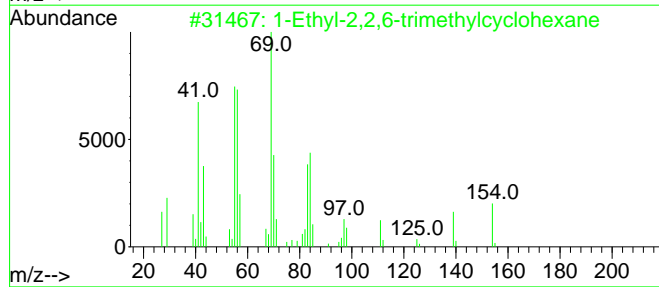
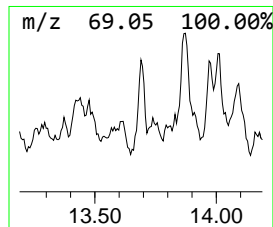
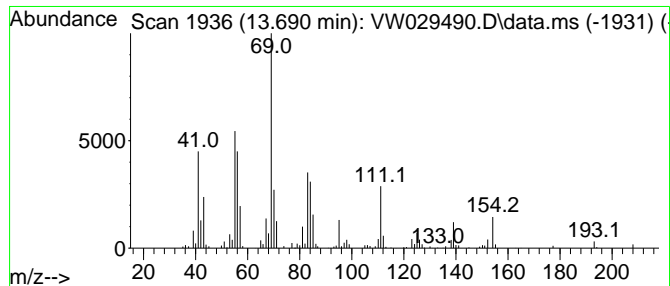
Quant Method : Z:\voasrv\HPCHEM1\MSVOA_W\Method\SFAMWLM070824SMA.M
 Quant Title : SFAM01.0

TIC Library : C:\Database\NIST20.L
 TIC Integration Parameters: LSCINT.P

 Peak Number 20 (DEL) Alkane: Cyclic13.690 Concentration Rank 15

R.T.	EstConc	Area	Relative to ISTD	R.T.
13.690	4.78 ug/L	80317	1,4-Dichlorobenzene-d4	13.556

Hit# of 5	Tentative ID	MW	MolForm	CAS#	Qual
1	1-Ethyl-2,2,6-trimethylcyclohexane	154	C11H22	071186-27-1	53
2	5-Undecene, 4-methyl-	168	C12H24	143185-91-5	53
3	Cyclohexane, 1,1,2-trimethyl-	126	C9H18	007094-26-0	50
4	Nonane, 2-methyl-3-methylene-	154	C11H22	055499-08-6	49
5	trans-2-Methyl-3-octene	126	C9H18	052937-36-7	43



Data Path : Z:\voasrv\HPCHEM1\MSVOA_W\Data\VW070924\
 Data File : VW029490.D
 Acq On : 09 Jul 2024 17:46
 Operator : SY/MD
 Sample : P3177-08
 Misc : 5.36g/10mL/MSVOA_W/SOIL/A
 ALS Vial : 12 Sample Multiplier: 1

Instrument :
 MSVOA_W
 ClientSampleId :
 A4BS6

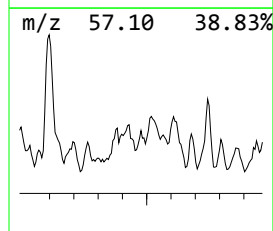
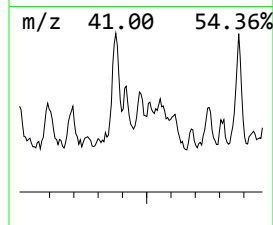
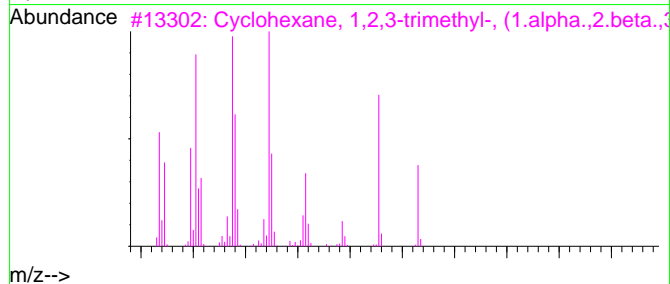
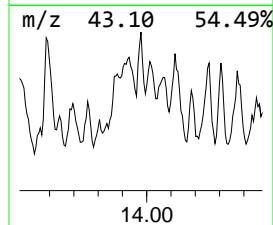
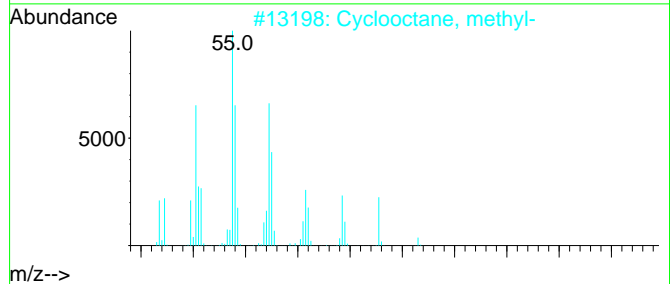
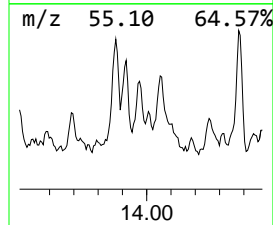
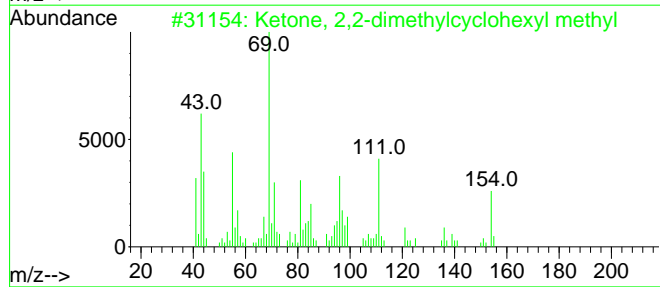
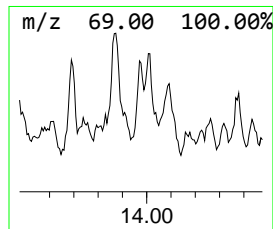
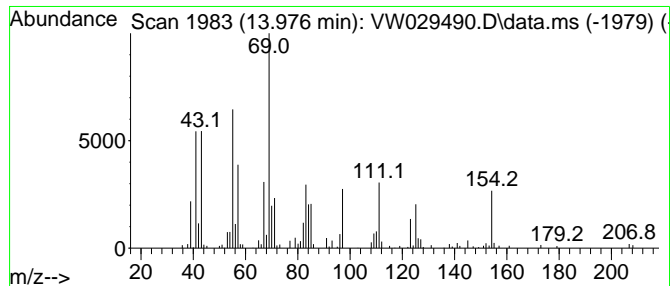
Quant Method : Z:\voasrv\HPCHEM1\MSVOA_W\Method\SFAMWLM070824SMA.M
 Quant Title : SFAM01.0

TIC Library : C:\Database\NIST20.L
 TIC Integration Parameters: LSCINT.P

 Peak Number 21 Ketone, 2,2-dimethylcyclohe... Concentration Rank 23

R.T.	EstConc	Area	Relative to ISTD	R.T.
13.976	3.16 ug/L	53109	1,4-Dichlorobenzene-d4	13.556

Hit#	of	Tentative ID	MW	MolForm	CAS#	Qual
1	5	Ketone, 2,2-dimethylcyclohexyl m...	154	C10H18O	017983-26-5	53
2		Cyclooctane, methyl-	126	C9H18	001502-38-1	49
3		Cyclohexane, 1,2,3-trimethyl-, (...	126	C9H18	001678-81-5	43
4		Cyclohexanone, 4-ethyl-3,4-dimet...	154	C10H18O	017429-42-4	30
5		Cyclohexane, 1,3,5-trimethyl-, (...	126	C9H18	001795-27-3	27



Data Path : Z:\voasrv\HPCHEM1\MSVOA_W\Data\VW070924\
 Data File : VW029490.D
 Acq On : 09 Jul 2024 17:46
 Operator : SY/MD
 Sample : P3177-08
 Misc : 5.36g/10mL/MSVOA_W/SOIL/A
 ALS Vial : 12 Sample Multiplier: 1

Instrument :
 MSVOA_W
 ClientSampleId :
 A4BS6

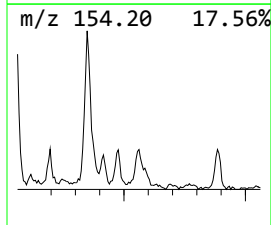
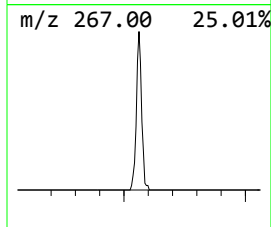
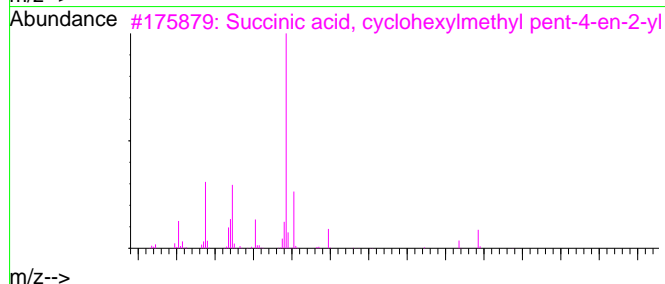
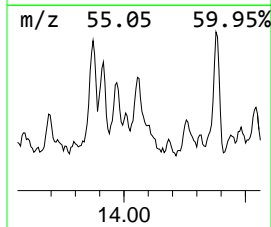
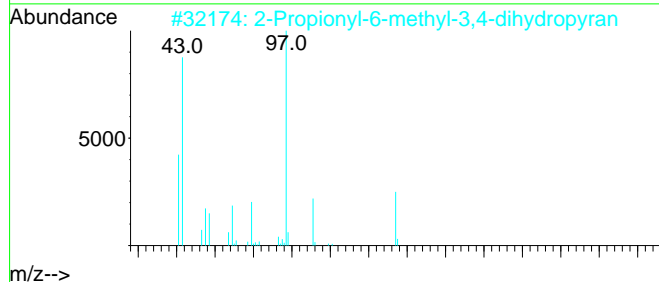
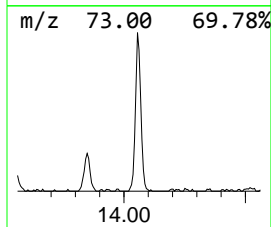
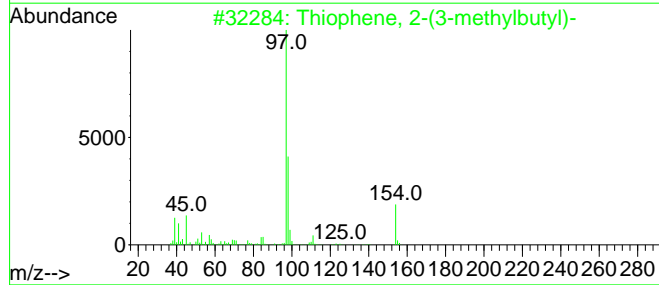
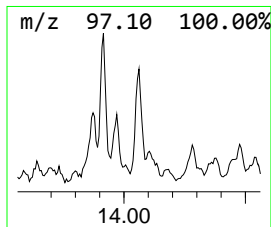
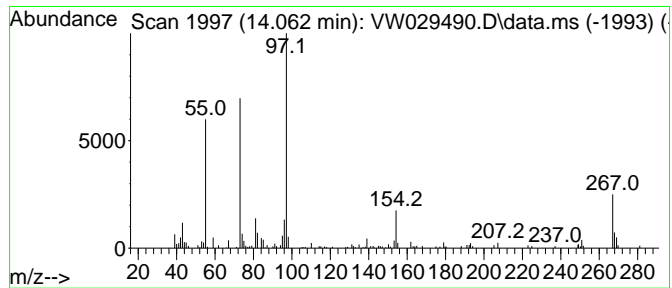
Quant Method : Z:\voasrv\HPCHEM1\MSVOA_W\Method\SFAMWLM070824SMA.M
 Quant Title : SFAM01.0

TIC Library : C:\Database\NIST20.L
 TIC Integration Parameters: LSCINT.P

 Peak Number 22 unknown-04 Concentration Rank 19

R.T.	EstConc	Area	Relative to ISTD	R.T.
14.062	3.48 ug/L	58470	1,4-Dichlorobenzene-d4	13.556

Hit#	of 5	Tentative ID	MW	MolForm	CAS#	Qual
1		Thiophene, 2-(3-methylbutyl)-	154	C9H14S	026963-33-7	47
2		2-Propionyl-6-methyl-3,4-dihydro...	154	C9H14O2	1000145-07-7	47
3		Succinic acid, cyclohexylmethyl ...	282	C16H26O4	1000391-16-0	38
4		Succinic acid, cyclohexylmethyl ...	358	C17H20Cl2O4	1000390-15-3	37
5		Cyclohexane, 1,1-dimethyl-	112	C8H16	000590-66-9	37



Data Path : Z:\voasrv\HPCHEM1\MSVOA_W\Data\VW070924\
 Data File : VW029490.D
 Acq On : 09 Jul 2024 17:46
 Operator : SY/MD
 Sample : P3177-08
 Misc : 5.36g/10mL/MSVOA_W/SOIL/A
 ALS Vial : 12 Sample Multiplier: 1

Instrument :
 MSVOA_W
 ClientSampleId :
 A4BS6

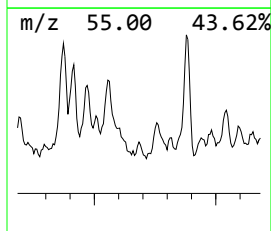
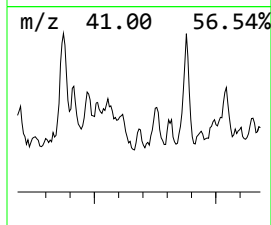
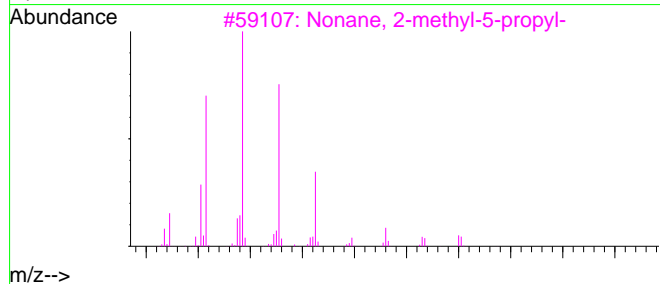
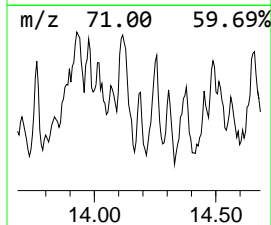
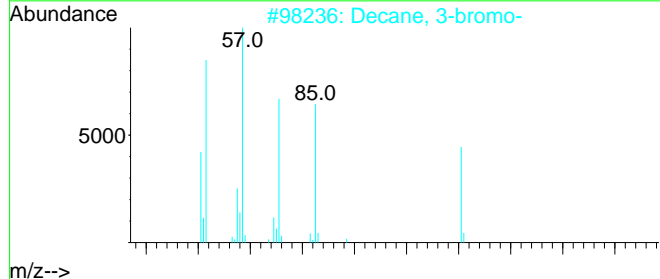
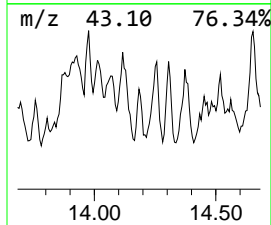
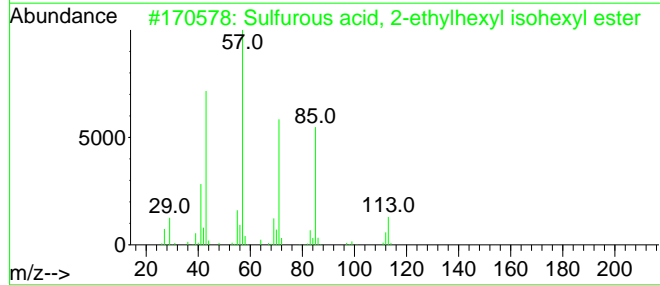
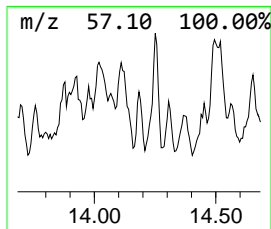
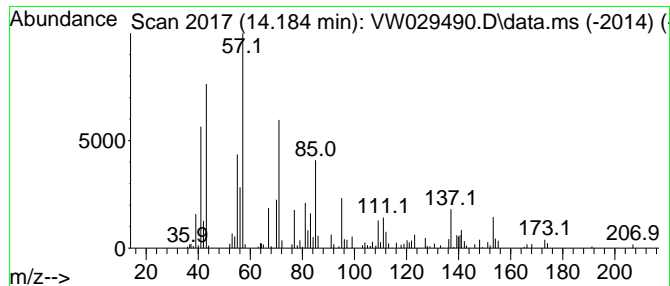
Quant Method : Z:\voasrv\HPCHEM1\MSVOA_W\Method\SFAMWLM070824SMA.M
 Quant Title : SFAM01.0

TIC Library : C:\Database\NIST20.L
 TIC Integration Parameters: LSCINT.P

 Peak Number 23 unknown-05 Concentration Rank 30

R.T.	EstConc	Area	Relative to ISTD	R.T.
14.184	2.06 ug/L	34603	1,4-Dichlorobenzene-d4	13.556

Hit#	of 5	Tentative ID	MW	MolForm	CAS#	Qual
1		Sulfurous acid, 2-ethylhexyl iso...	278	C14H30O3S	1000309-19-0	43
2		Decane, 3-bromo-	220	C10H21Br	030571-71-2	43
3		Nonane, 2-methyl-5-propyl-	184	C13H28	031081-17-1	43
4		Sulfurous acid, butyl nonyl ester	264	C13H28O3S	1000309-17-6	43
5		4-Heptanone, 2-methyl-	128	C8H16O	000626-33-5	38



Data Path : Z:\voasrv\HPCHEM1\MSVOA_W\Data\VW070924\
 Data File : VW029490.D
 Acq On : 09 Jul 2024 17:46
 Operator : SY/MD
 Sample : P3177-08
 Misc : 5.36g/10mL/MSVOA_W/SOIL/A
 ALS Vial : 12 Sample Multiplier: 1

Instrument :
 MSVOA_W
 ClientSampleId :
 A4BS6

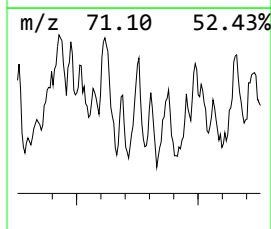
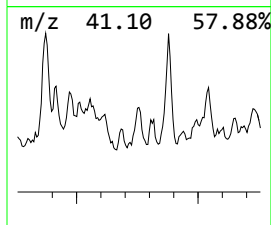
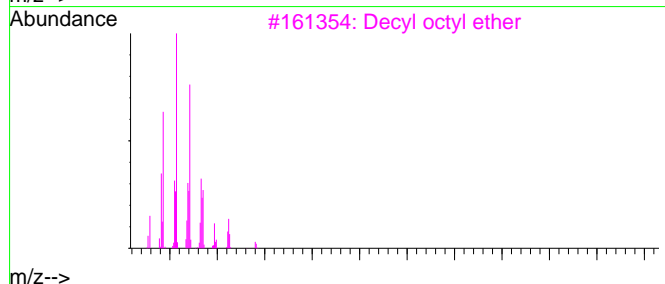
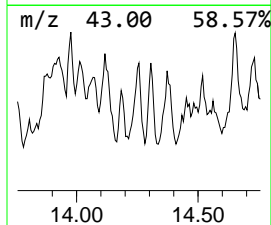
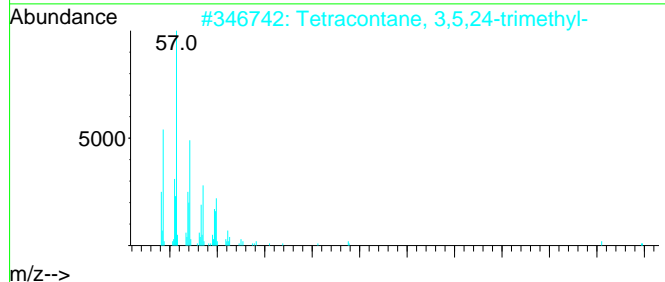
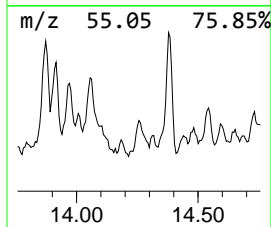
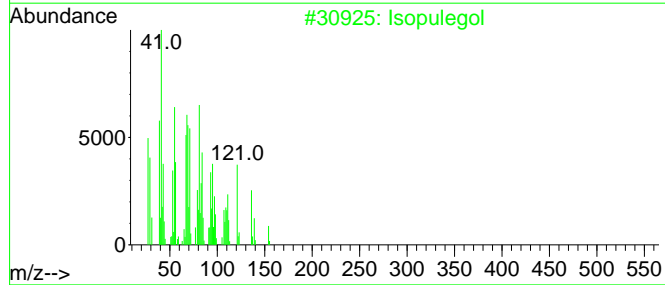
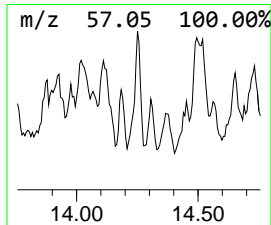
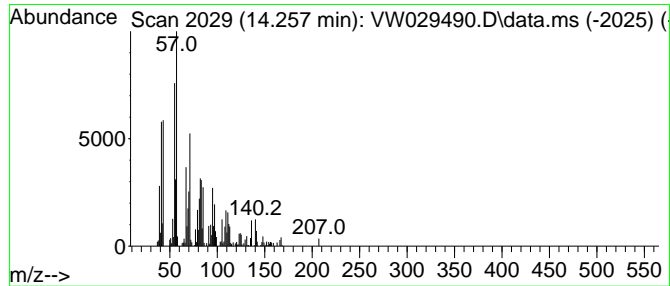
Quant Method : Z:\voasrv\HPCHEM1\MSVOA_W\Method\SFAMWLM070824SMA.M
 Quant Title : SFAM01.0

TIC Library : C:\Database\NIST20.L
 TIC Integration Parameters: LSCINT.P

 Peak Number 24 Isopulegol Concentration Rank 14

R.T.	EstConc	Area	Relative to ISTD	R.T.
14.257	5.01 ug/L	84345	1,4-Dichlorobenzene-d4	13.556

Hit#	of	Tentative ID	MW	MolForm	CAS#	Qual
1	5	Isopulegol	154	C10H18O	000089-79-2	64
2		Tetracontane, 3,5,24-trimethyl-	605	C43H88	055162-61-3	47
3		Decyl octyl ether	270	C18H38O	1000406-38-3	46
4		Oxalic acid, cyclobutyl tetradec...	340	C20H36O4	1000309-70-9	43
5		Octane, 2,3,3-trimethyl-	156	C11H24	062016-30-2	38



Data Path : Z:\voasrv\HPCHEM1\MSVOA_W\Data\VW070924\
 Data File : VW029490.D
 Acq On : 09 Jul 2024 17:46
 Operator : SY/MD
 Sample : P3177-08
 Misc : 5.36g/10mL/MSVOA_W/SOIL/A
 ALS Vial : 12 Sample Multiplier: 1

Instrument :
 MSVOA_W
 ClientSampleId :
 A4BS6

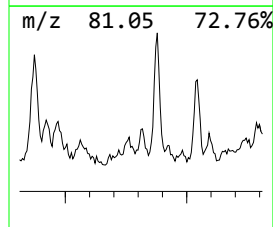
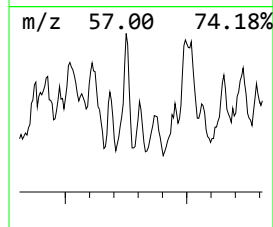
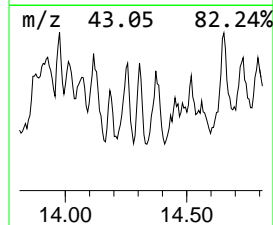
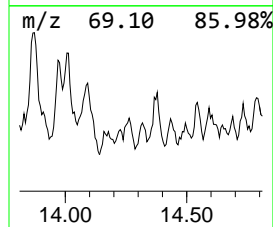
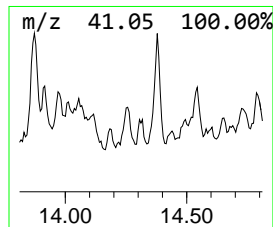
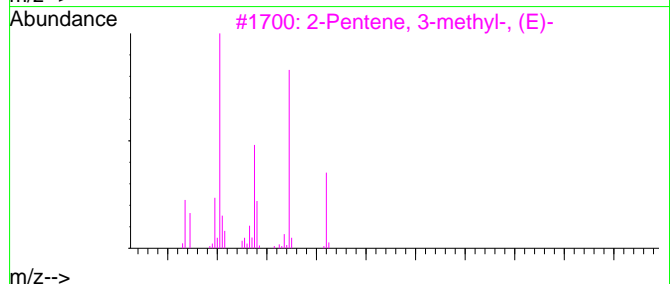
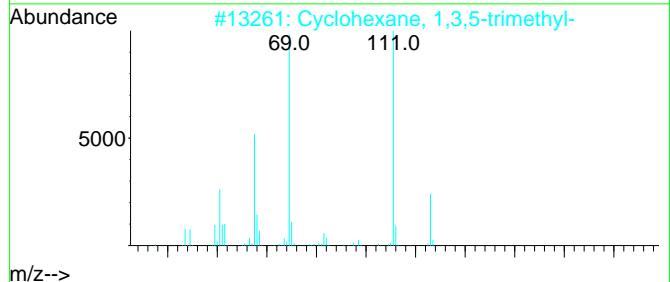
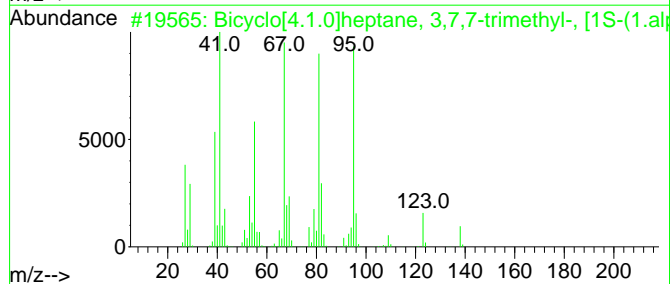
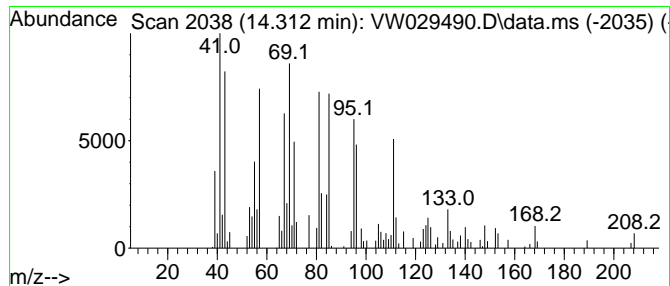
Quant Method : Z:\voasrv\HPCHEM1\MSVOA_W\Method\SFAMWLM070824SMA.M
 Quant Title : SFAM01.0

TIC Library : C:\Database\NIST20.L
 TIC Integration Parameters: LSCINT.P

 Peak Number 25 unknown-06 Concentration Rank 28

R.T.	EstConc	Area	Relative to ISTD	R.T.
14.312	2.20 ug/L	36974	1,4-Dichlorobenzene-d4	13.556

Hit#	of 5	Tentative ID	MW	MolForm	CAS#	Qual
1		Bicyclo[4.1.0]heptane, 3,7,7-tri...	138	C10H18	006069-97-2	25
2		Cyclohexane, 1,3,5-trimethyl-	126	C9H18	001839-63-0	25
3		2-Pentene, 3-methyl-, (E)-	84	C6H12	000616-12-6	18
4		Cyclohexane, 1,3,5-trimethyl-, (...	126	C9H18	001795-26-2	18
5		2,6-Octadiene, 1-methoxy-3,7-dim...	168	C11H20O	072152-72-8	18



Data Path : Z:\voasrv\HPCHEM1\MSVOA_W\Data\VW070924\
 Data File : VW029490.D
 Acq On : 09 Jul 2024 17:46
 Operator : SY/MD
 Sample : P3177-08
 Misc : 5.36g/10mL/MSVOA_W/SOIL/A
 ALS Vial : 12 Sample Multiplier: 1

Instrument :
 MSVOA_W
 ClientSampleId :
 A4BS6

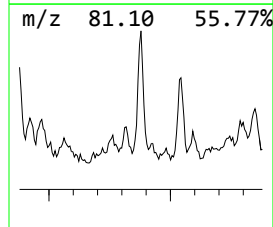
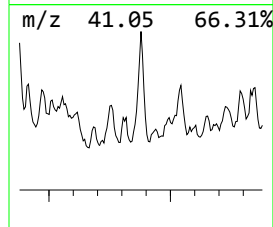
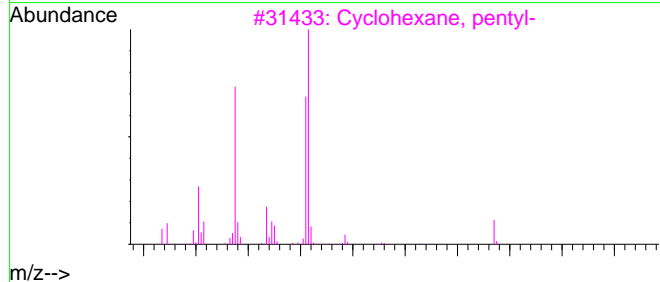
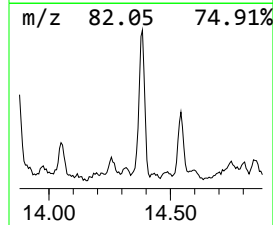
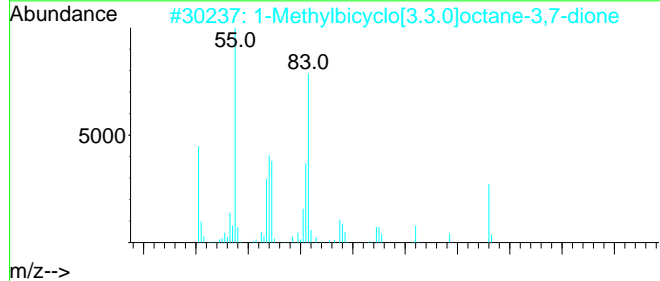
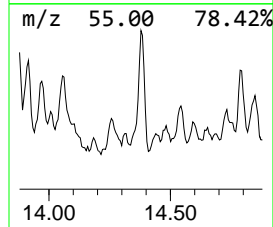
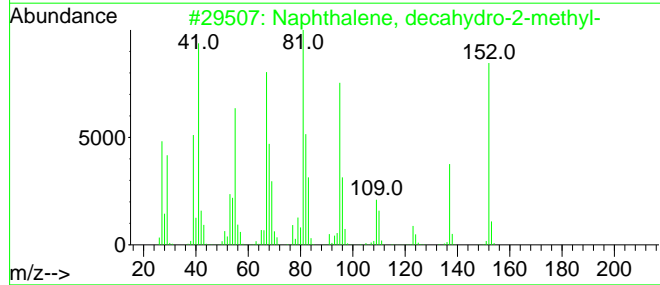
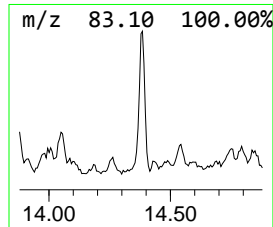
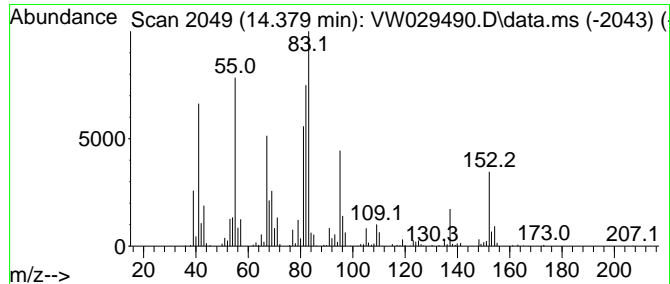
Quant Method : Z:\voasrv\HPCHEM1\MSVOA_W\Method\SFAMWLM070824SMA.M
 Quant Title : SFAM01.0

TIC Library : C:\Database\NIST20.L
 TIC Integration Parameters: LSCINT.P

 Peak Number 26 Naphthalene, decahydro-2-me... Concentration Rank 4

R.T.	EstConc	Area	Relative to ISTD	R.T.
14.379	11.93 ug/L	200692	1,4-Dichlorobenzene-d4	13.556

Hit#	of 5	Tentative ID	MW	MolForm	CAS#	Qual
1		Naphthalene, decahydro-2-methyl-	152	C11H20	002958-76-1	86
2		1-Methylbicyclo[3.3.0]octane-3,7...	152	C9H12O2	021170-08-1	52
3		Cyclohexane, pentyl-	154	C11H22	004292-92-6	49
4		Bicyclo[3.1.1]heptan-3-one, 2,6,...	152	C10H16O	000547-60-4	46
5		Cyclohexane, (1-methylbutyl)-	154	C11H22	061208-94-4	38



Data Path : Z:\voasrv\HPCHEM1\MSVOA_W\Data\VW070924\
 Data File : VW029490.D
 Acq On : 09 Jul 2024 17:46
 Operator : SY/MD
 Sample : P3177-08
 Misc : 5.36g/10mL/MSVOA_W/SOIL/A
 ALS Vial : 12 Sample Multiplier: 1

Instrument :
 MSVOA_W
 ClientSampleId :
 A4BS6

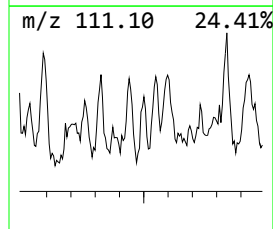
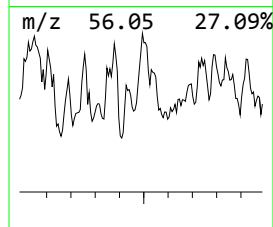
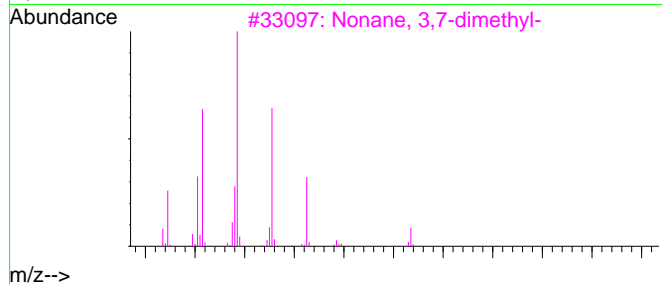
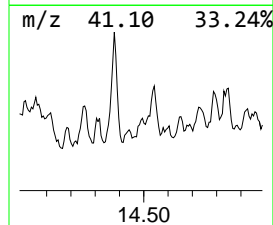
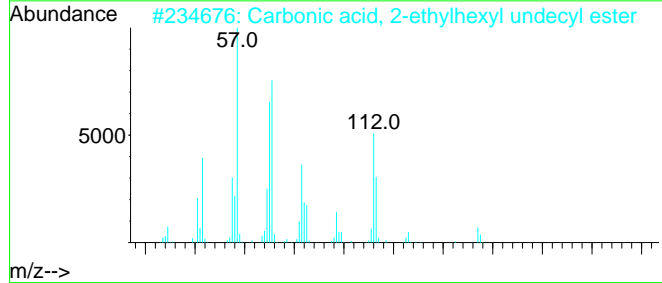
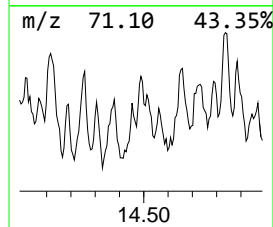
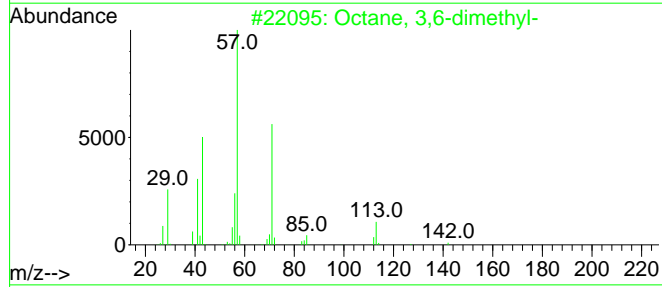
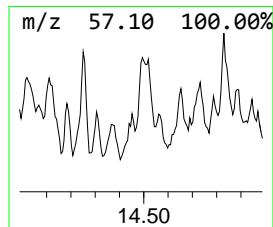
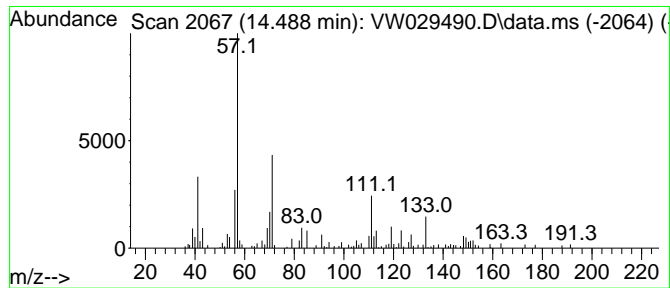
Quant Method : Z:\voasrv\HPCHEM1\MSVOA_W\Method\SFAMWLM070824SMA.M
 Quant Title : SFAM01.0

TIC Library : C:\Database\NIST20.L
 TIC Integration Parameters: LSCINT.P

 Peak Number 27 (DEL) Alkane: Straight-Chai... Concentration Rank 35

R.T.	EstConc	Area	Relative to ISTD	R.T.
14.489	1.43 ug/L	24084	1,4-Dichlorobenzene-d4	13.556

Hit#	of 5	Tentative ID	MW	MolForm	CAS#	Qual
1		Octane, 3,6-dimethyl-	142	C10H22	015869-94-0	46
2		Carbonic acid, 2-ethylhexyl unde...	328	C20H40O3	1000383-13-8	43
3		Nonane, 3,7-dimethyl-	156	C11H24	017302-32-8	43
4		Nonane, 3-methyl-	142	C10H22	005911-04-6	43
5		Dodecane, 2,7,10-trimethyl-	212	C15H32	074645-98-0	38



Data Path : Z:\voasrv\HPCHEM1\MSVOA_W\Data\VW070924\
 Data File : VW029490.D
 Acq On : 09 Jul 2024 17:46
 Operator : SY/MD
 Sample : P3177-08
 Misc : 5.36g/10mL/MSVOA_W/SOIL/A
 ALS Vial : 12 Sample Multiplier: 1

Instrument :
 MSVOA_W
 ClientSampleId :
 A4BS6

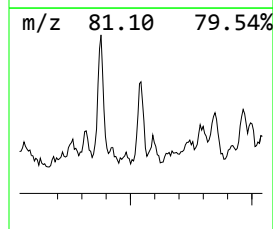
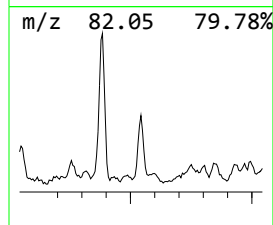
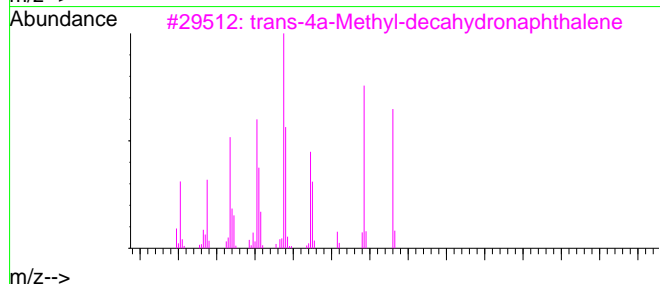
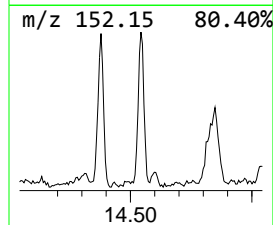
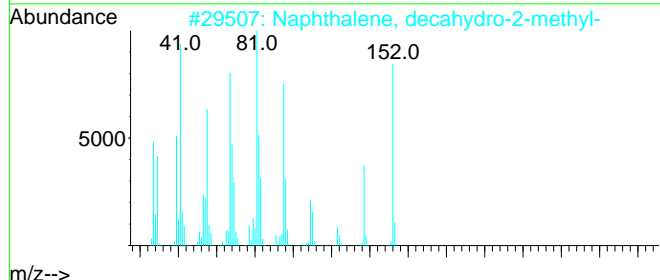
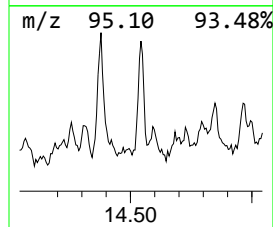
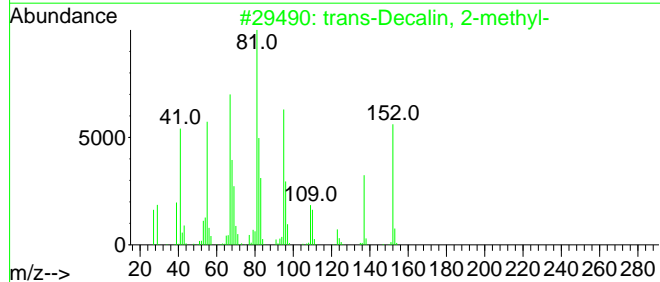
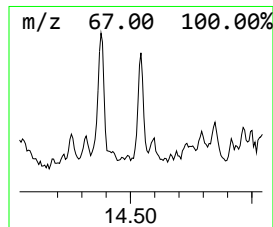
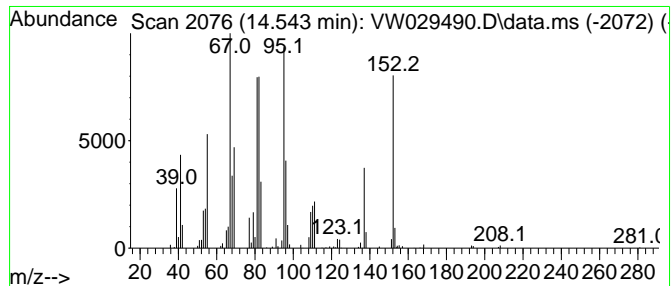
Quant Method : Z:\voasrv\HPCHEM1\MSVOA_W\Method\SFAMWLM070824SMA.M
 Quant Title : SFAM01.0

TIC Library : C:\Database\NIST20.L
 TIC Integration Parameters: LSCINT.P

 Peak Number 28 trans-Decalin, 2-methyl- Concentration Rank 13

R.T.	EstConc	Area	Relative to ISTD	R.T.
14.543	5.54 ug/L	93192	1,4-Dichlorobenzene-d4	13.556

Hit#	of	Tentative ID	MW	MolForm	CAS#	Qual
1	5	trans-Decalin, 2-methyl-	152	C11H20	1000152-47-3	74
2		Naphthalene, decahydro-2-methyl-	152	C11H20	002958-76-1	60
3		trans-4a-Methyl-decahydronaphtha...	152	C11H20	002547-27-5	58
4		(+)-Dihydrocarvone	152	C10H16O	005524-05-0	53
5		Spiro[5.5]undecane	152	C11H20	000180-43-8	52



Data Path : Z:\voasrv\HPCHEM1\MSVOA_W\Data\VW070924\
 Data File : VW029490.D
 Acq On : 09 Jul 2024 17:46
 Operator : SY/MD
 Sample : P3177-08
 Misc : 5.36g/10mL/MSVOA_W/SOIL/A
 ALS Vial : 12 Sample Multiplier: 1

Instrument :
 MSVOA_W
 ClientSampleId :
 A4BS6

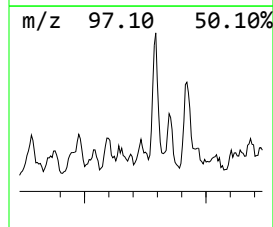
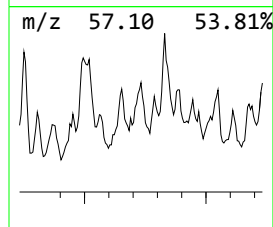
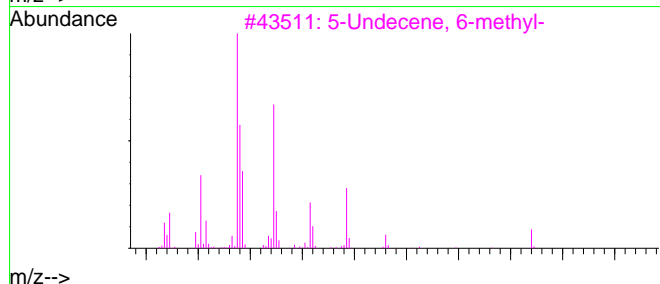
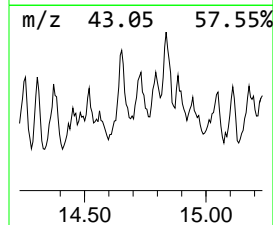
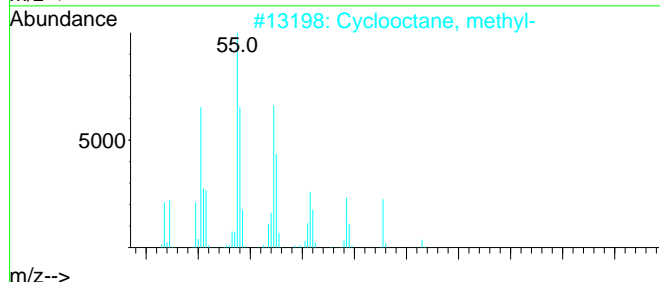
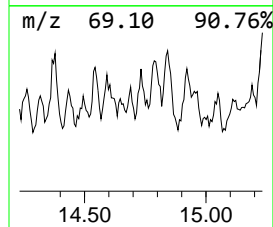
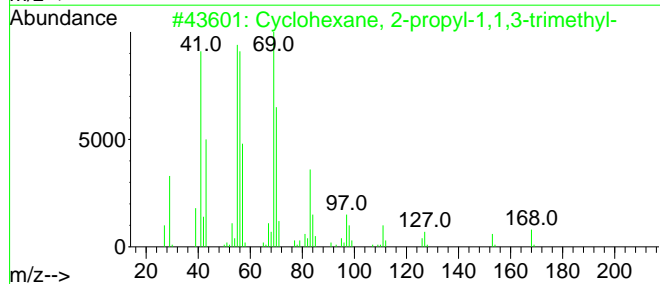
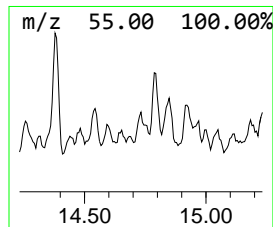
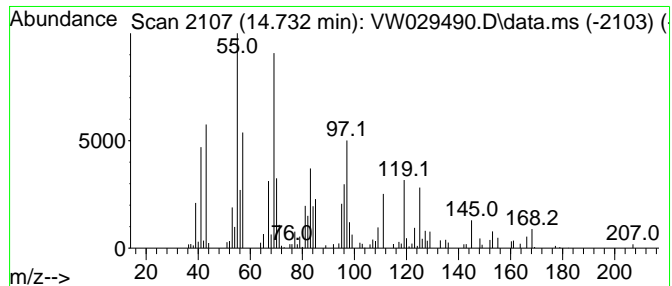
Quant Method : Z:\voasrv\HPCHEM1\MSVOA_W\Method\SFAMWLM070824SMA.M
 Quant Title : SFAM01.0

TIC Library : C:\Database\NIST20.L
 TIC Integration Parameters: LSCINT.P

 Peak Number 29 (DEL) Alkane: Cyclic14.732 Concentration Rank 20

R.T.	EstConc	Area	Relative to ISTD	R.T.
14.732	3.40 ug/L	57103	1,4-Dichlorobenzene-d4	13.556

Hit# of 5	Tentative ID	MW	MolForm	CAS#	Qual
1	Cyclohexane, 2-propyl-1,1,3-trimethyl-	168	C12H24	081983-70-2	46
2	Cyclooctane, methyl-	126	C9H18	001502-38-1	45
3	5-Undecene, 6-methyl-	168	C12H24	083687-45-0	43
4	4-Dodecene	168	C12H24	002030-84-4	38
5	4-Undecene, 4-methyl-	168	C12H24	061142-40-3	38



Data Path : Z:\voasrv\HPCHEM1\MSVOA_W\Data\VW070924\
 Data File : VW029490.D
 Acq On : 09 Jul 2024 17:46
 Operator : SY/MD
 Sample : P3177-08
 Misc : 5.36g/10mL/MSVOA_W/SOIL/A
 ALS Vial : 12 Sample Multiplier: 1

Instrument :
 MSVOA_W
 ClientSampleId :
 A4BS6

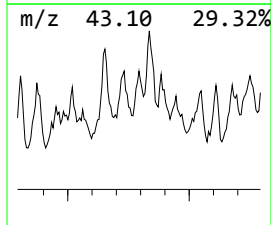
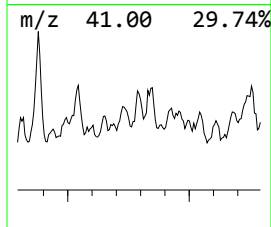
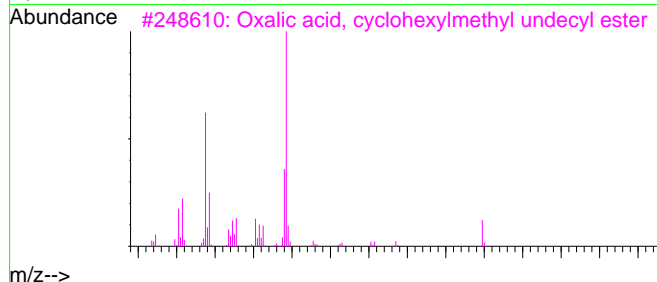
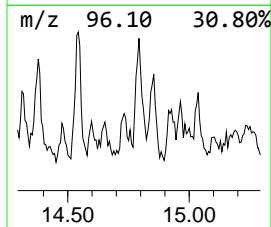
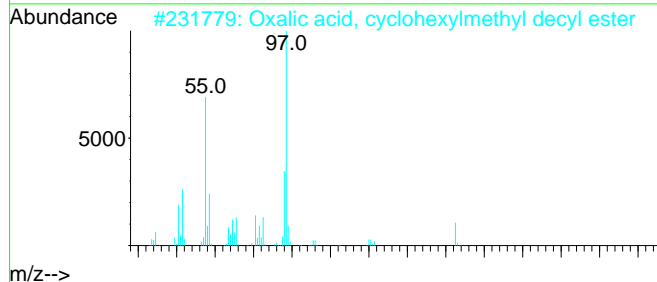
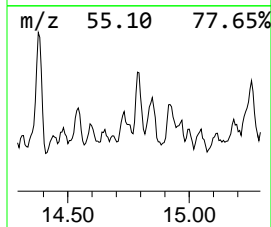
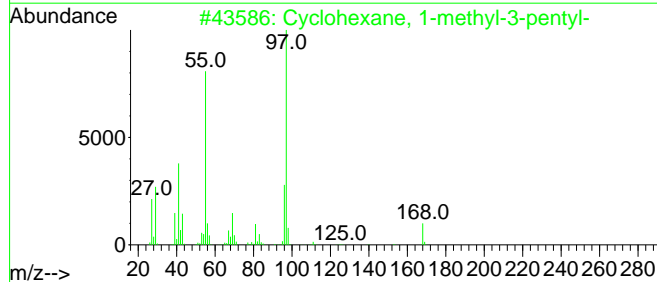
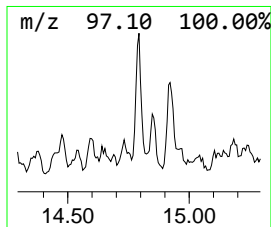
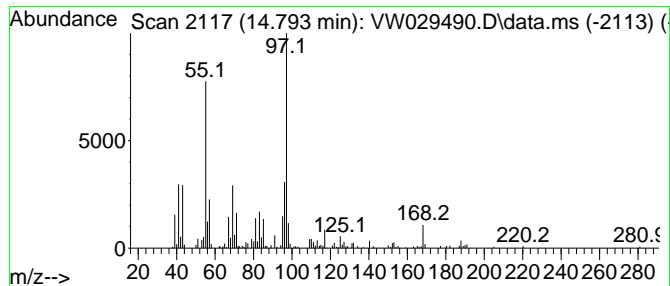
Quant Method : Z:\voasrv\HPCHEM1\MSVOA_W\Method\SFAMWLM070824SMA.M
 Quant Title : SFAM01.0

TIC Library : C:\Database\NIST20.L
 TIC Integration Parameters: LSCINT.P

 Peak Number 30 (DEL) Alkane: Cyclic14.793 Concentration Rank 12

R.T.	EstConc	Area	Relative to ISTD	R.T.
14.793	5.78 ug/L	97221	1,4-Dichlorobenzene-d4	13.556

Hit#	of 5	Tentative ID	MW	MolForm	CAS#	Qual
1		Cyclohexane, 1-methyl-3-pentyl-	168	C12H24	054411-02-8	81
2		Oxalic acid, cyclohexylmethyl de...	326	C19H34O4	1000309-68-7	80
3		Oxalic acid, cyclohexylmethyl un...	340	C20H36O4	1000309-68-8	80
4		Cyclohexane, 1-methyl-2-pentyl-	168	C12H24	054411-01-7	74
5		Oxalic acid, cyclohexylmethyl no...	312	C18H32O4	1000309-68-6	74



Data Path : Z:\voasrv\HPCHEM1\MSVOA_W\Data\VW070924\
 Data File : VW029490.D
 Acq On : 09 Jul 2024 17:46
 Operator : SY/MD
 Sample : P3177-08
 Misc : 5.36g/10mL/MSVOA_W/SOIL/A
 ALS Vial : 12 Sample Multiplier: 1

Instrument :
 MSVOA_W
 ClientSampleId :
 A4BS6

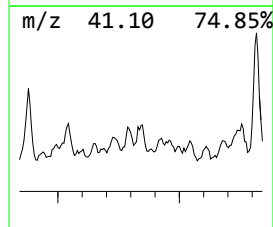
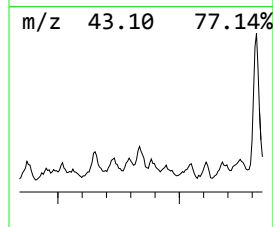
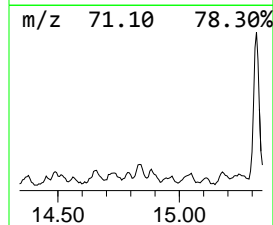
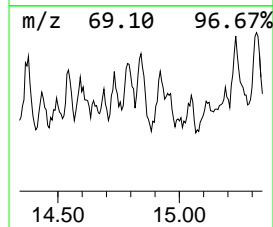
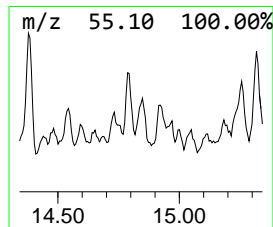
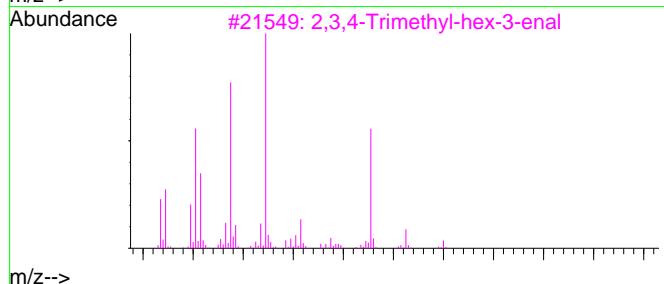
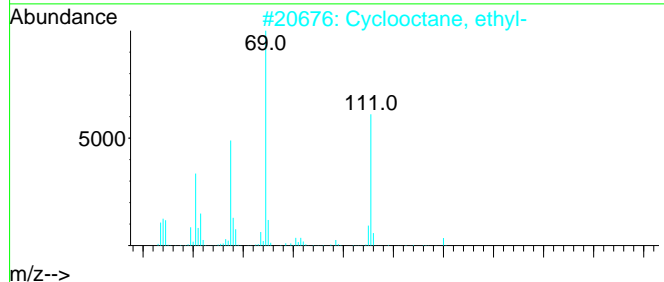
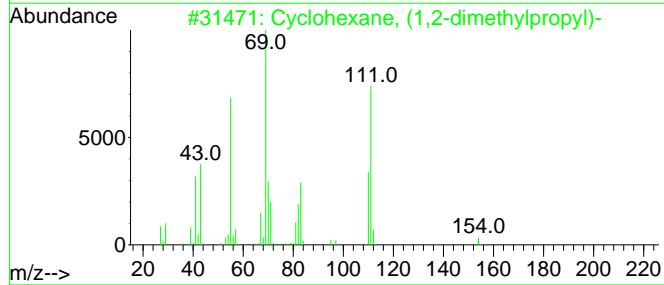
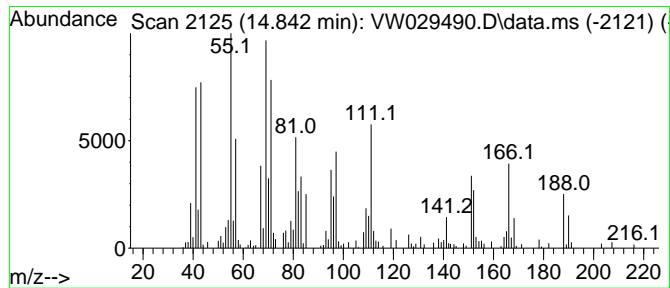
Quant Method : Z:\voasrv\HPCHEM1\MSVOA_W\Method\SFAMWLM070824SMA.M
 Quant Title : SFAM01.0

TIC Library : C:\Database\NIST20.L
 TIC Integration Parameters: LSCINT.P

 Peak Number 31 (DEL) Alkane: Cyclic14.842 Concentration Rank 8

R.T.	EstConc	Area	Relative to ISTD	R.T.
14.842	8.14 ug/L	136944	1,4-Dichlorobenzene-d4	13.556

Hit# of 5	Tentative ID	MW	MolForm	CAS#	Qual
1	Cyclohexane, (1,2-dimethylpropyl)-	154	C11H22	051284-29-8	25
2	Cyclooctane, ethyl-	140	C10H20	013152-02-8	18
3	2,3,4-Trimethyl-hex-3-enal	140	C9H16O	1000193-72-9	14
4	Cyclohexane, 1-ethyl-1,4-dimethy...	140	C10H20	062238-32-8	14
5	Cyclohexane, 1,3,5-trimethyl-	126	C9H18	001839-63-0	14



Data Path : Z:\voasrv\HPCHEM1\MSVOA_W\Data\VW070924\
 Data File : VW029490.D
 Acq On : 09 Jul 2024 17:46
 Operator : SY/MD
 Sample : P3177-08
 Misc : 5.36g/10mL/MSVOA_W/SOIL/A
 ALS Vial : 12 Sample Multiplier: 1

Instrument :
 MSVOA_W
 ClientSampleId :
 A4BS6

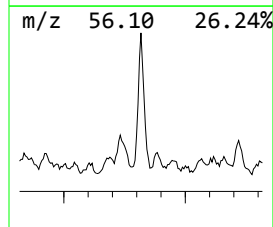
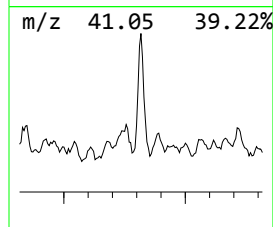
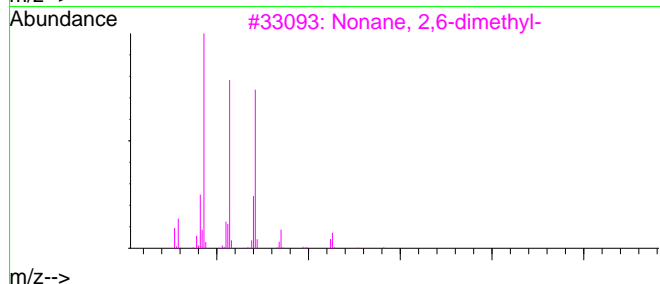
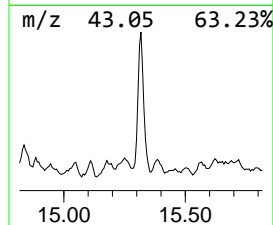
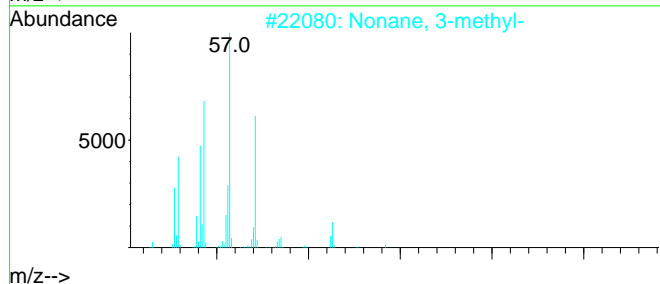
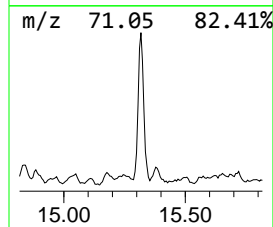
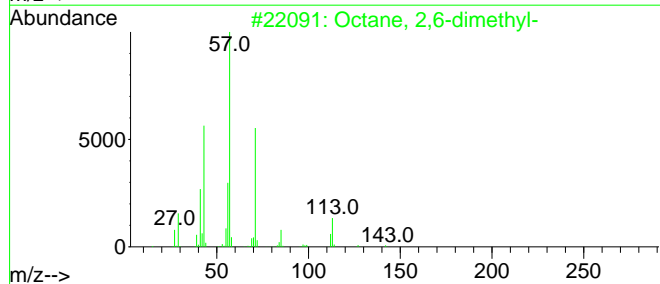
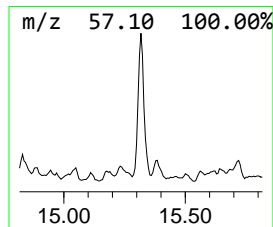
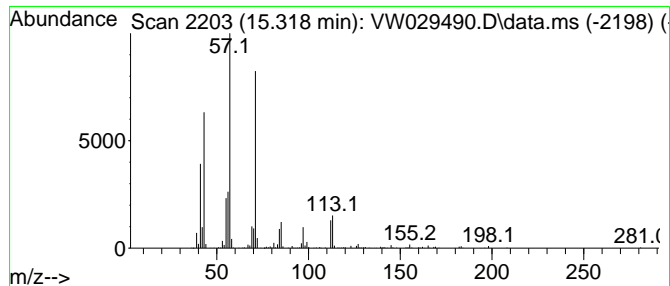
Quant Method : Z:\voasrv\HPCHEM1\MSVOA_W\Method\SFAMWLM070824SMA.M
 Quant Title : SFAM01.0

TIC Library : C:\Database\NIST20.L
 TIC Integration Parameters: LSCINT.P

 Peak Number 32 (DEL) Alkane: Straight-Chai... Concentration Rank 1

R.T.	EstConc	Area	Relative to ISTD	R.T.
15.318	18.81 ug/L	316422	1,4-Dichlorobenzene-d4	13.556

Hit#	of 5	Tentative ID	MW	MolForm	CAS#	Qual
1		Octane, 2,6-dimethyl-	142	C10H22	002051-30-1	83
2		Nonane, 3-methyl-	142	C10H22	005911-04-6	72
3		Nonane, 2,6-dimethyl-	156	C11H24	017302-28-2	72
4		Tridecane, 7-methyl-	198	C14H30	026730-14-3	72
5		Nonane, 4-methyl-5-propyl-	184	C13H28	062185-55-1	64



Data Path : Z:\voasrv\HPCHEM1\MSVOA_W\Data\VW070924\
 Data File : VW029490.D
 Acq On : 09 Jul 2024 17:46
 Operator : SY/MD
 Sample : P3177-08
 Misc : 5.36g/10mL/MSVOA_W/SOIL/A
 ALS Vial : 12 Sample Multiplier: 1

Instrument :
 MSVOA_W
 ClientSampleId :
 A4BS6

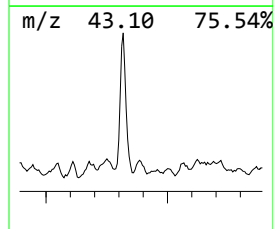
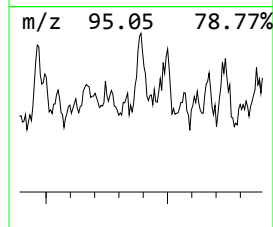
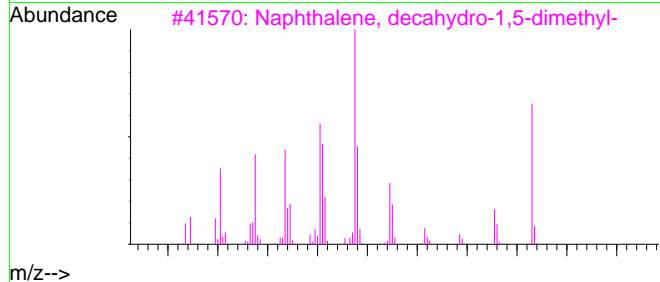
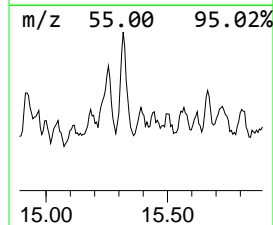
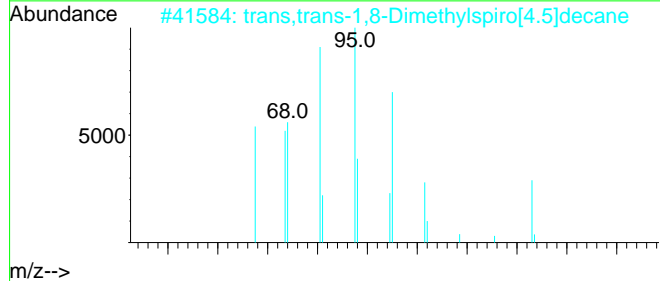
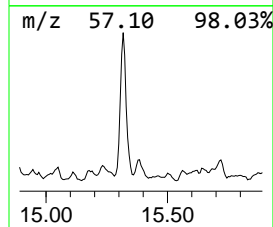
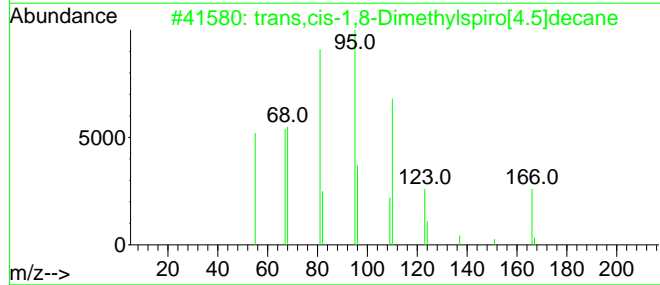
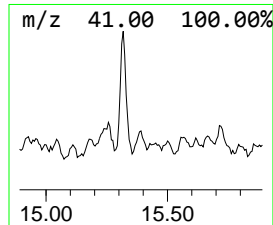
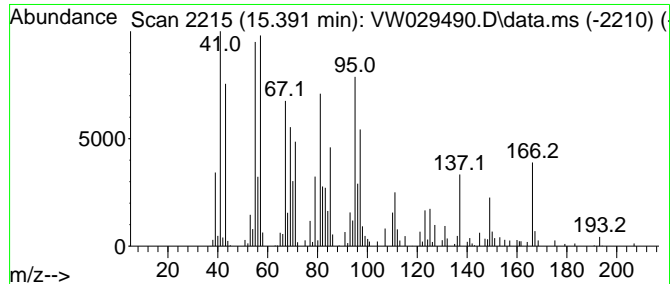
Quant Method : Z:\voasrv\HPCHEM1\MSVOA_W\Method\SFAMWLM070824SMA.M
 Quant Title : SFAM01.0

TIC Library : C:\Database\NIST20.L
 TIC Integration Parameters: LSCINT.P

 Peak Number 33 trans,cis-1,8-Dimethylspiro... Concentration Rank 16

R.T.	EstConc	Area	Relative to ISTD	R.T.
15.391	4.27 ug/L	71740	1,4-Dichlorobenzene-d4	13.556

Hit#	of	Tentative ID	MW	MolForm	CAS#	Qual
1	5	trans,cis-1,8-Dimethylspiro[4.5]...	166	C12H22	1000111-72-9	50
2		trans,trans-1,8-Dimethylspiro[4.5]...	166	C12H22	1000111-72-8	43
3		Naphthalene, decahydro-1,5-dimet...	166	C12H22	066552-62-3	43
4		2-C14H26	194	C14H26	000638-60-8	30
5		17-Pentatriacontene	491	C35H70	006971-40-0	30



Data Path : Z:\voasrv\HPCHEM1\MSVOA_W\Data\VW070924\
 Data File : VW029490.D
 Acq On : 09 Jul 2024 17:46
 Operator : SY/MD
 Sample : P3177-08
 Misc : 5.36g/10mL/MSVOA_W/SOIL/A
 ALS Vial : 12 Sample Multiplier: 1

Instrument :
 MSVOA_W
 ClientSampleId :
 A4BS6

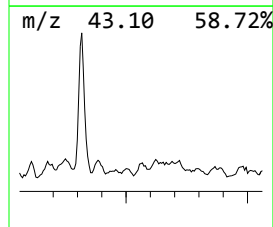
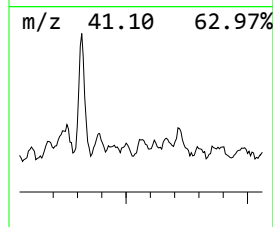
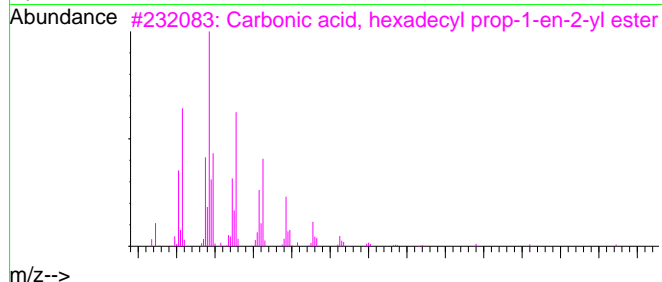
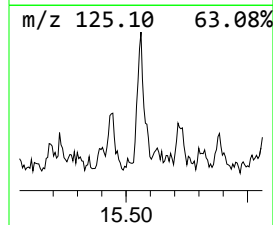
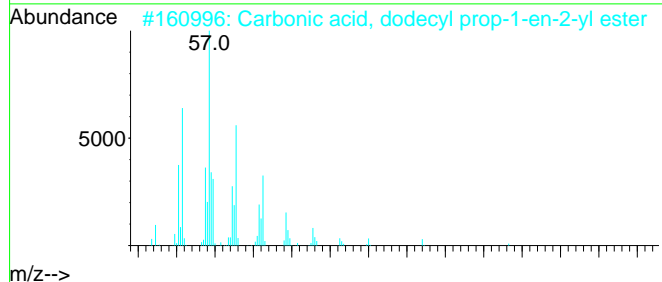
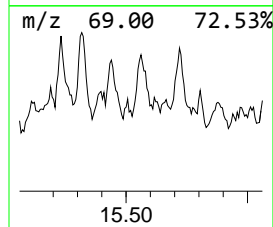
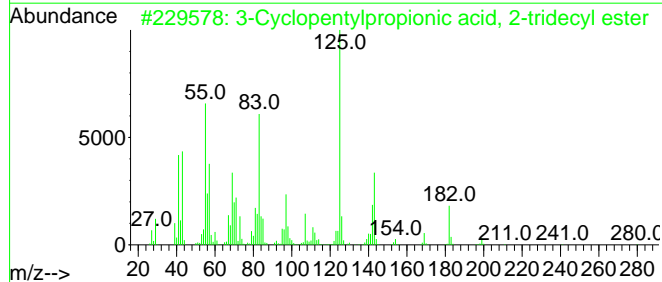
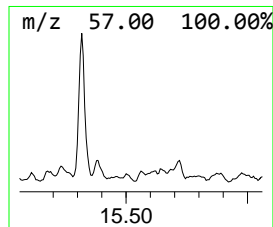
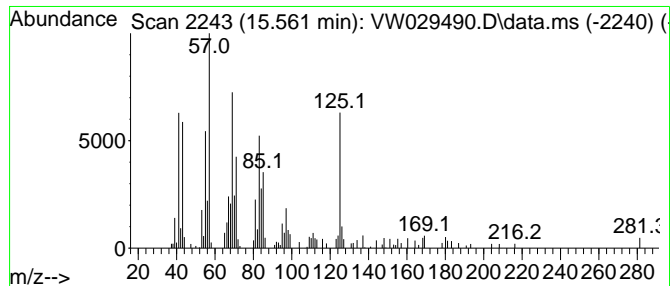
Quant Method : Z:\voasrv\HPCHEM1\MSVOA_W\Method\SFAMWLM070824SMA.M
 Quant Title : SFAM01.0

TIC Library : C:\Database\NIST20.L
 TIC Integration Parameters: LSCINT.P

 Peak Number 34 3-Cyclopentylpropionic acid... Concentration Rank 25

R.T.	EstConc	Area	Relative to ISTD	R.T.
15.561	2.44 ug/L	40957	1,4-Dichlorobenzene-d4	13.556

Hit#	of 5	Tentative ID	MW	MolForm	CAS#	Qual
1		3-Cyclopentylpropionic acid, 2-t...	324	C21H40O2	1000293-56-9	53
2		Carbonic acid, dodecyl prop-1-en...	270	C16H30O3	1000382-90-7	35
3		Carbonic acid, hexadecyl prop-1-...	326	C20H38O3	1000382-90-3	35
4		Heptane, 2,4-dimethyl-	128	C9H20	002213-23-2	27
5		Ethanone, 1-cyclohexyl-	126	C8H14O	000823-76-7	25



Data Path : Z:\voasrv\HPCHEM1\MSVOA_W\Data\VW070924\
 Data File : VW029490.D
 Acq On : 09 Jul 2024 17:46
 Operator : SY/MD
 Sample : P3177-08
 Misc : 5.36g/10mL/MSVOA_W/SOIL/A
 ALS Vial : 12 Sample Multiplier: 1

Instrument :
 MSVOA_W
 ClientSampleId :
 A4BS6

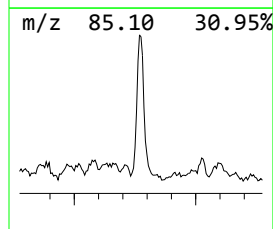
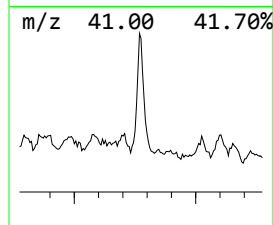
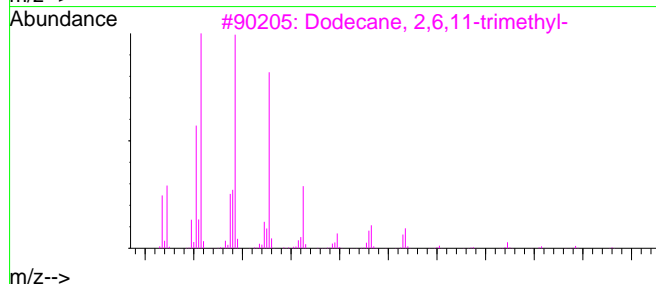
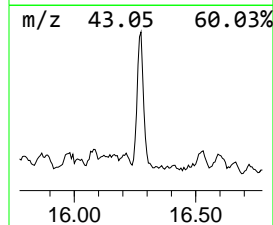
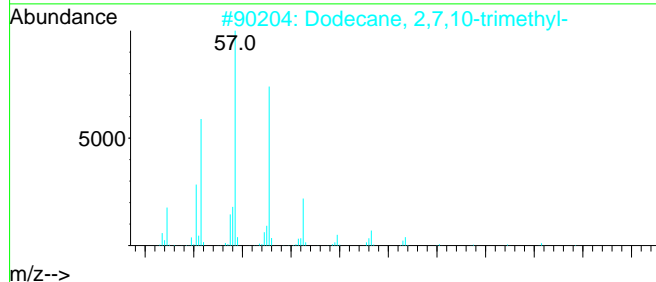
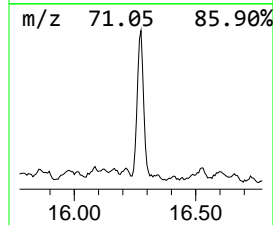
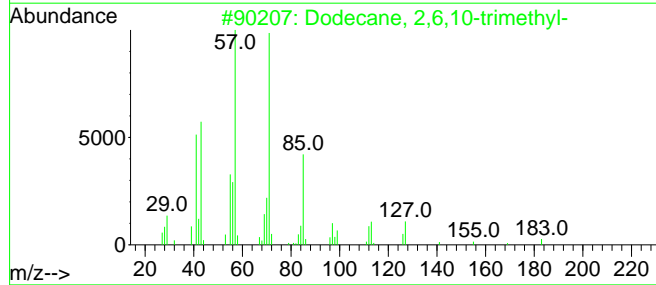
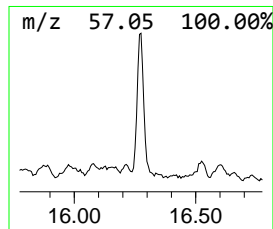
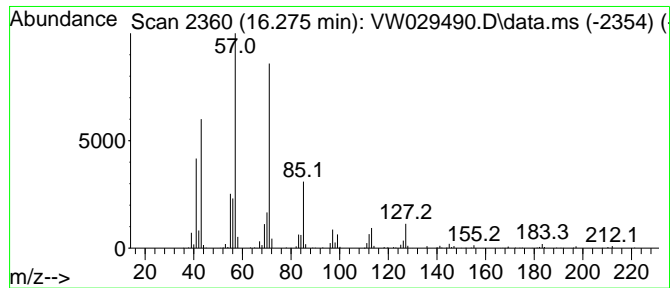
Quant Method : Z:\voasrv\HPCHEM1\MSVOA_W\Method\SFAMWLM070824SMA.M
 Quant Title : SFAM01.0

TIC Library : C:\Database\NIST20.L
 TIC Integration Parameters: LSCINT.P

 Peak Number 35 (DEL) Alkane: Straight-Chai... Concentration Rank 2

R.T.	EstConc	Area	Relative to ISTD	R.T.
16.275	16.39 ug/L	275639	1,4-Dichlorobenzene-d4	13.556

Hit#	of 5	Tentative ID	MW	MolForm	CAS#	Qual
1		Dodecane, 2,6,10-trimethyl-	212	C15H32	003891-98-3	91
2		Dodecane, 2,7,10-trimethyl-	212	C15H32	074645-98-0	91
3		Dodecane, 2,6,11-trimethyl-	212	C15H32	031295-56-4	90
4		Dodecane, 2,6,11-trimethyl-	212	C15H32	031295-56-4	90
5		Dodecane, 2,6,10-trimethyl-	212	C15H32	003891-98-3	80



Data Path : Z:\voasrv\HPCHEM1\MSVOA_W\Data\VW070924\
 Data File : VW029490.D
 Acq On : 09 Jul 2024 17:46
 Operator : SY/MD
 Sample : P3177-08
 Misc : 5.36g/10mL/MSVOA_W/SOIL/A
 ALS Vial : 12 Sample Multiplier: 1

Instrument :
 MSVOA_W
 ClientSampleId :
 A4BS6

Quant Method : Z:\voasrv\HPCHEM1\MSVOA_W\Method\SFAMWLM070824SMA.M
 Quant Title : SFAM01.0

TIC Library : C:\Database\NIST20.L

TIC Integration Parameters: LSCINT.P

TIC Top Hit name	RT	EstConc	Units	Response	--Internal Standard--			
					#	RT	Resp	Conc
(DEL) Alkane: C...	11.227	2.1	ug/L	66513	2	11.629	783650	25.0
unknown-01	11.331	1.6	ug/L	49473	2	11.629	783650	25.0
(DEL) Alkane: C...	11.873	1.5	ug/L	46542	2	11.629	783650	25.0
(DEL) Alkane: S...	12.135	3.6	ug/L	111481	2	11.629	783650	25.0
(DEL) Alkane: S...	12.251	3.6	ug/L	111679	2	11.629	783650	25.0
(DEL) Alkane: S...	12.361	9.6	ug/L	301986	2	11.629	783650	25.0
unknown-02	12.495	2.0	ug/L	63630	2	11.629	783650	25.0
(DEL) Alkane: C...	12.775	9.6	ug/L	161817	3	13.556	420468	25.0
(DEL) Alkane: C...	12.855	6.0	ug/L	101179	3	13.556	420468	25.0
(DEL) Alkane: C...	12.940	14.5	ug/L	243677	3	13.556	420468	25.0
(DEL) Alkane: S...	13.074	3.2	ug/L	53407	3	13.556	420468	25.0
cis-2-Oxabicycl...	13.117	1.9	ug/L	32595	3	13.556	420468	25.0
(DEL) Alkane: S...	13.159	2.5	ug/L	42182	3	13.556	420468	25.0
(DEL) Alkane: S...	13.288	3.4	ug/L	56738	3	13.556	420468	25.0
(DEL) Alkane: S...	13.336	2.2	ug/L	37729	3	13.556	420468	25.0
unknown-03	13.409	2.2	ug/L	37700	3	13.556	420468	25.0
(DEL) Alkane: C...	13.440	5.8	ug/L	98378	3	13.556	420468	25.0
(DEL) Alkane: C...	13.690	4.8	ug/L	80317	3	13.556	420468	25.0
Ketone, 2,2-dim...	13.976	3.2	ug/L	53109	3	13.556	420468	25.0
unknown-04	14.062	3.5	ug/L	58470	3	13.556	420468	25.0
unknown-05	14.184	2.1	ug/L	34603	3	13.556	420468	25.0
Isopulegol	14.257	5.0	ug/L	84345	3	13.556	420468	25.0
unknown-06	14.312	2.2	ug/L	36974	3	13.556	420468	25.0
Naphthalene, de...	14.379	11.9	ug/L	200692	3	13.556	420468	25.0
(DEL) Alkane: S...	14.489	1.4	ug/L	24084	3	13.556	420468	25.0
trans-Decalin, ...	14.543	5.5	ug/L	93192	3	13.556	420468	25.0
(DEL) Alkane: C...	14.732	3.4	ug/L	57103	3	13.556	420468	25.0
(DEL) Alkane: C...	14.793	5.8	ug/L	97221	3	13.556	420468	25.0
(DEL) Alkane: C...	14.842	8.1	ug/L	136944	3	13.556	420468	25.0
(DEL) Alkane: S...	15.318	18.8	ug/L	316422	3	13.556	420468	25.0
trans,cis-1,8-D...	15.391	4.3	ug/L	71740	3	13.556	420468	25.0
3-Cyclopentylpr...	15.561	2.4	ug/L	40957	3	13.556	420468	25.0
(DEL) Alkane: S...	16.275	16.4	ug/L	275639	3	13.556	420468	25.0