

Data Path : Z:\voasrv\HPCHEM1\MSVOA\_W\Data\VW071125\  
 Data File : VW031828.D  
 Acq On : 11 Jul 2025 18:22  
 Operator : SY/MD  
 Sample : Q2564-05  
 Misc : 3.35g/5mL/MSVOA\_W/SOIL/A  
 ALS Vial : 13 Sample Multiplier: 1

Instrument :  
 MSVOA\_W  
 ClientSampleId :  
 ARS20-0039

Integration Parameters: RTEINT.P  
 Integrator: RTE  
 Smoothing : ON Filtering: 5  
 Sampling : 1 Min Area: 3 % of largest Peak  
 Start Thrs: 0.2 Max Peaks: 100  
 Stop Thrs : 0 Peak Location: TOP

If leading or trailing edge < 100 prefer < Baseline drop else tangent >  
 Peak separation: 5

Method : Z:\voasrv\HPCHEM1\MSVOA\_W\Method\82W063025S.M  
 Title : SW846 8260

Signal : TIC: VW031828.D\data.ms

peak #	R.T. min	first scan	max scan	last scan	PK TY	peak height	corr. area	corr. % max.	% of total
1	4.960	493	504	519	rBV3	16119	61940	5.18%	0.902%
2	5.966	660	669	685	rBV3	8921	28634	2.39%	0.417%
3	7.904	974	987	991	rBV	164183	389715	32.59%	5.678%
4	7.965	991	997	1010	rVB	270522	621475	51.97%	9.054%
5	8.325	1047	1056	1066	rBV	170728	394484	32.99%	5.747%
6	8.855	1135	1143	1153	rBV	477063	936403	78.31%	13.643%
7	10.325	1378	1384	1392	rBV	648660	1155171	96.61%	16.830%
8	11.635	1593	1599	1605	rVB	678022	1195750	100.00%	17.421%
9	12.617	1756	1760	1768	rVB	537253	981957	82.12%	14.306%
10	13.556	1909	1914	1921	rVB	665782	1098276	91.85%	16.001%

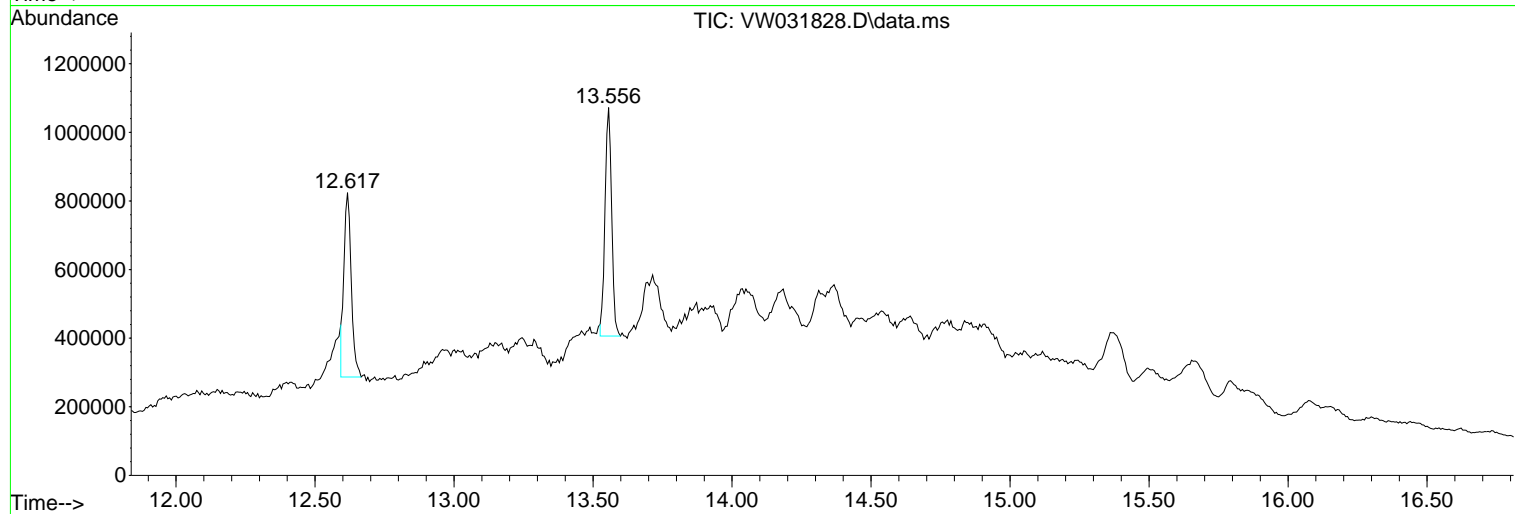
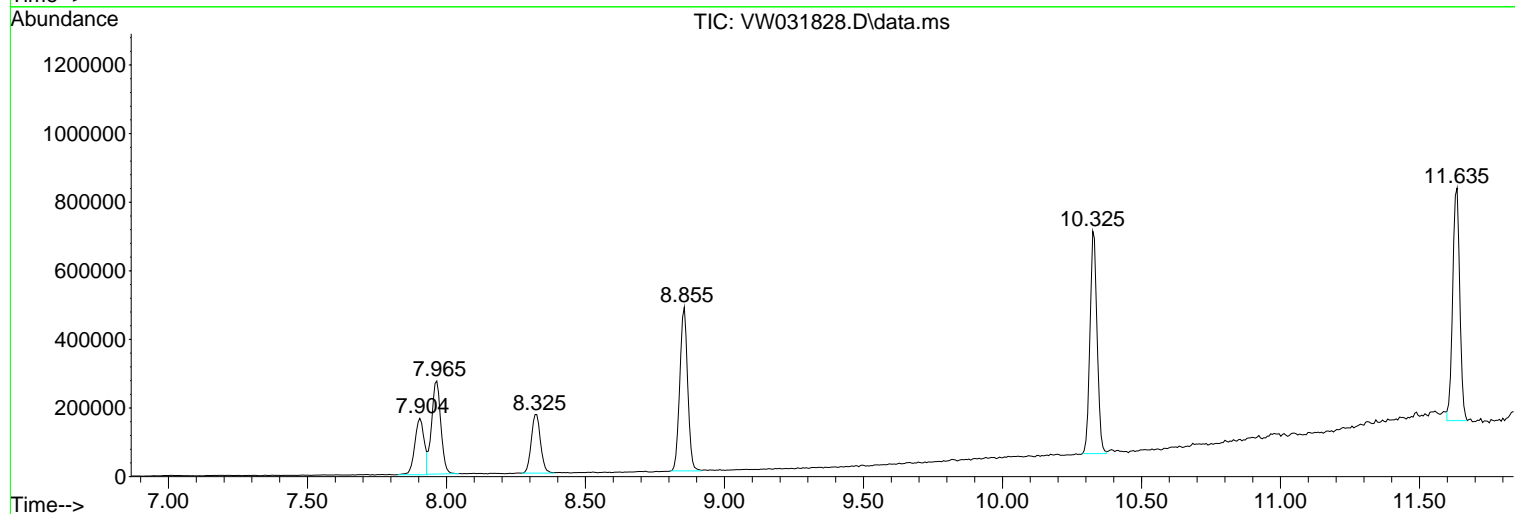
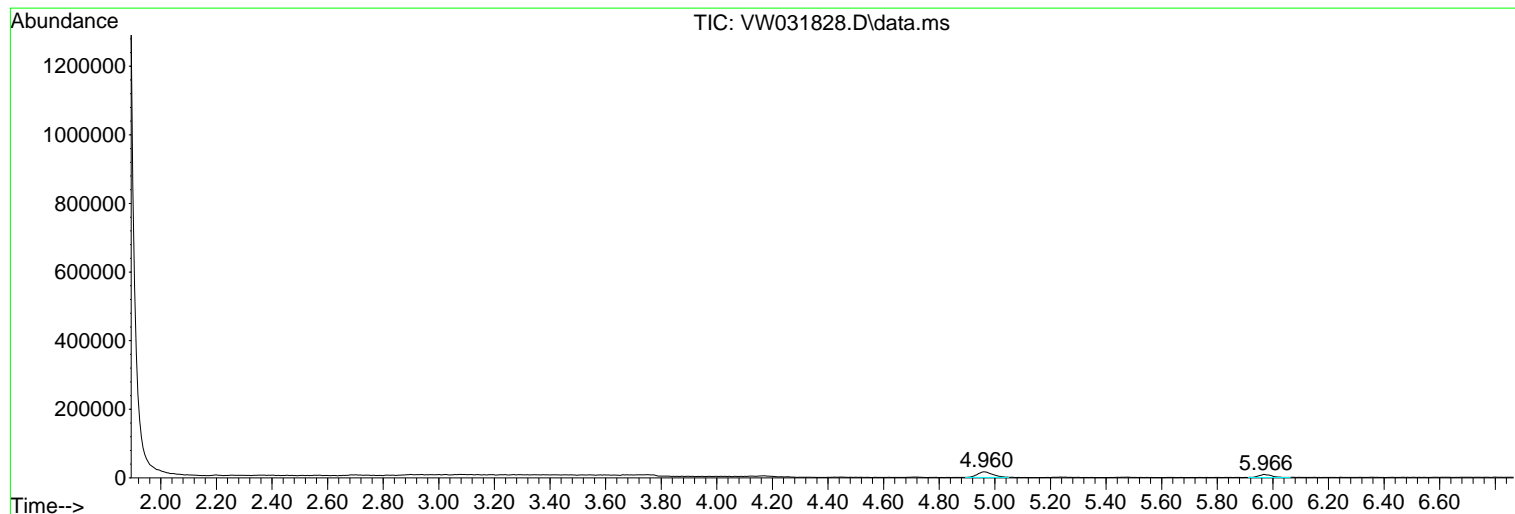
Sum of corrected areas: 6863805

Data Path : Z:\voasrv\HPCHEM1\MSVOA\_W\Data\VW071125\  
 Data File : VW031828.D  
 Acq On : 11 Jul 2025 18:22  
 Operator : SY/MD  
 Sample : Q2564-05  
 Misc : 3.35g/5mL/MSVOA\_W/SOIL/A  
 ALS Vial : 13 Sample Multiplier: 1

Instrument :  
 MSVOA\_W  
 ClientSampleId :  
 ARS20-0039

Quant Method : Z:\voasrv\HPCHEM1\MSVOA\_W\Method\82W063025S.M  
 Quant Title : SW846 8260

TIC Library : C:\Database\NIST20.L  
 TIC Integration Parameters: LSCINT.P



Library Search Compound Report

Data Path : Z:\voasrv\HPCHEM1\MSVOA\_W\Data\VW071125\  
Data File : VW031828.D  
Acq On : 11 Jul 2025 18:22  
Operator : SY/MD  
Sample : Q2564-05  
Misc : 3.35g/5mL/MSVOA\_W/SOIL/A  
ALS Vial : 13 Sample Multiplier: 1

Instrument :  
MSVOA\_W  
ClientSampleId :  
ARS20-0039

Quant Method : Z:\voasrv\HPCHEM1\MSVOA\_W\Method\82W063025S.M  
Quant Title : SW846 8260

TIC Library : C:\Database\NIST20.L  
TIC Integration Parameters: LSCINT.P

No Library Search Compounds Detected

\*\*\*\*\*

Data Path : Z:\voasrv\HPCHEM1\MSVOA\_W\Data\VW071125\  
Data File : VW031828.D  
Acq On : 11 Jul 2025 18:22  
Operator : SY/MD  
Sample : Q2564-05  
Misc : 3.35g/5mL/MSVOA\_W/SOIL/A  
ALS Vial : 13 Sample Multiplier: 1

Instrument :  
MSVOA\_W  
ClientSampleId :  
ARS20-0039

Quant Method : Z:\voasrv\HPCHEM1\MSVOA\_W\Method\82W063025S.M  
Quant Title : SW846 8260

TIC Library : C:\Database\NIST20.L  
TIC Integration Parameters: LSCINT.P

TIC Top Hit name	RT	EstConc	Units	Response	--Internal Standard--			
					#	RT	Resp	Conc

---