

Data Path : Z:\voasrv\HPCHEM1\MSVOA_W\Data\VW071125\
 Data File : VW031833.D
 Acq On : 11 Jul 2025 20:12
 Operator : SY/MD
 Sample : VIBLK
 Misc : 5.00g/5mL/MSVOA_W/SOIL
 ALS Vial : 18 Sample Multiplier: 1

Instrument :
 MSVOA_W
 ClientSampleId :
 VIBLK

Integration Parameters: RTEINT.P

Integrator: RTE
 Smoothing : ON Filtering: 5
 Sampling : 1 Min Area: 3 % of largest Peak
 Start Thrs: 0.2 Max Peaks: 100
 Stop Thrs : 0 Peak Location: TOP

If leading or trailing edge < 100 prefer < Baseline drop else tangent >
 Peak separation: 5

Method : Z:\voasrv\HPCHEM1\MSVOA_W\Method\82W063025S.M
 Title : SW846 8260

Signal : TIC: VW031833.D\data.ms

peak #	R.T. min	first scan	max scan	last scan	PK TY	peak height	corr. area	corr. % max.	% of total
1	4.960	491	504	519	rBV	43846	171496	12.41%	2.189%
2	5.978	661	671	682	rBV3	15671	48605	3.52%	0.620%
3	7.904	978	987	991	rBV2	154728	364912	26.40%	4.657%
4	7.959	991	996	1007	rVB2	298205	701937	50.78%	8.959%
5	8.319	1048	1055	1066	rBV	156186	344165	24.90%	4.392%
6	8.855	1135	1143	1152	rBV	503123	1046575	75.71%	13.357%
7	10.325	1378	1384	1393	rBV	648164	1180846	85.42%	15.071%
8	11.629	1593	1598	1606	rVB	747776	1327046	96.00%	16.937%
9	12.617	1756	1760	1773	rVB2	652268	1382327	100.00%	17.642%
10	13.556	1909	1914	1921	rVB	760819	1267418	91.69%	16.176%

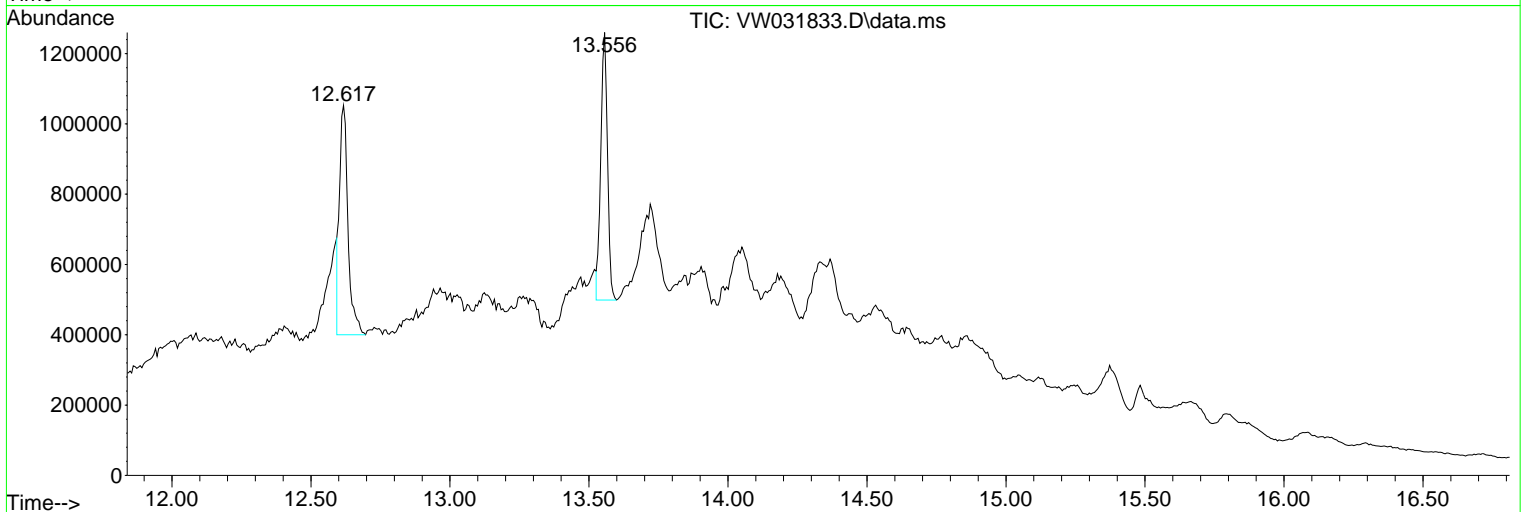
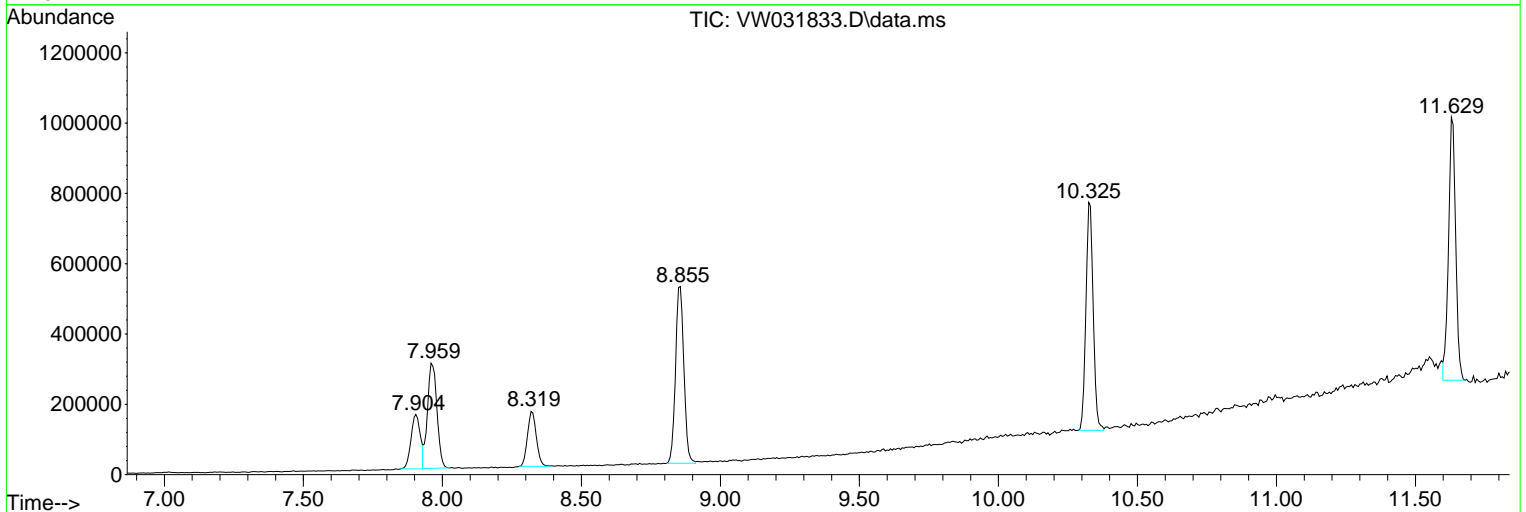
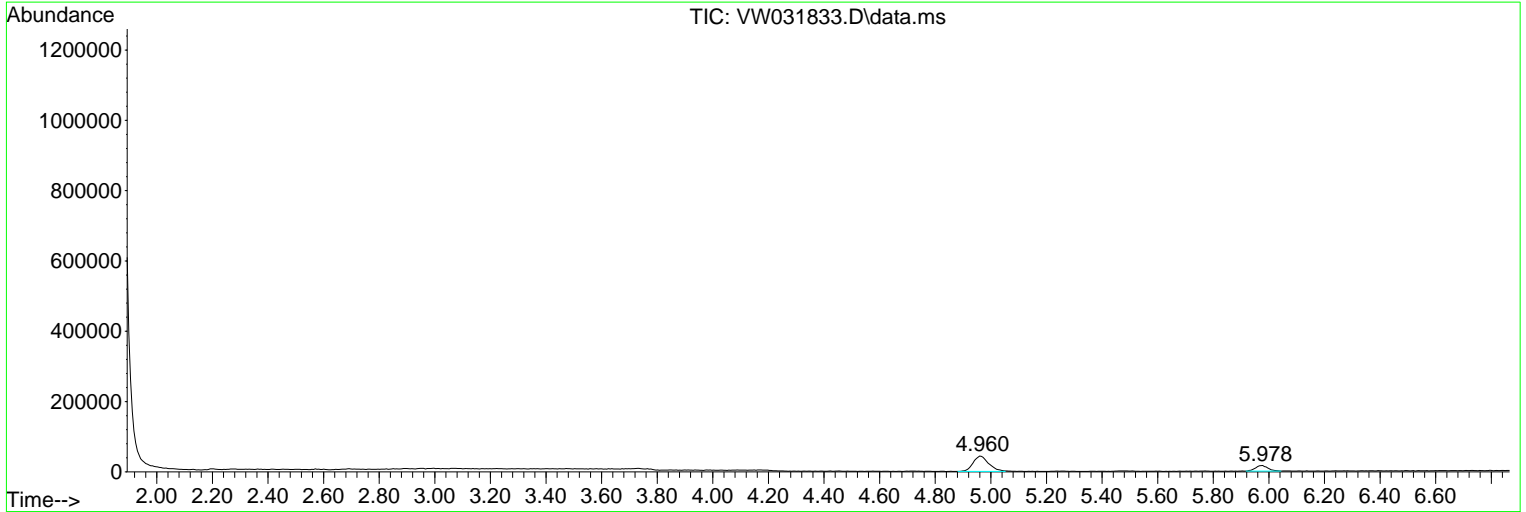
Sum of corrected areas: 7835327

Data Path : Z:\voasrv\HPCHEM1\MSVOA_W\Data\VW071125\
 Data File : VW031833.D
 Acq On : 11 Jul 2025 20:12
 Operator : SY/MD
 Sample : VIBLK
 Misc : 5.00g/5mL/MSVOA_W/SOIL
 ALS Vial : 18 Sample Multiplier: 1

Instrument :
 MSVOA_W
 ClientSampleId :
 VIBLK

Quant Method : Z:\voasrv\HPCHEM1\MSVOA_W\Method\82W063025S.M
 Quant Title : SW846 8260

TIC Library : C:\Database\NIST20.L
 TIC Integration Parameters: LSCINT.P



Library Search Compound Report

Data Path : Z:\voasrv\HPCHEM1\MSVOA_W\Data\VW071125\
Data File : VW031833.D
Acq On : 11 Jul 2025 20:12
Operator : SY/MD
Sample : VIBLK
Misc : 5.00g/5mL/MSVOA_W/SOIL
ALS Vial : 18 Sample Multiplier: 1

Instrument :
MSVOA_W
ClientSampleId :
VIBLK

Quant Method : Z:\voasrv\HPCHEM1\MSVOA_W\Method\82W063025S.M
Quant Title : SW846 8260

TIC Library : C:\Database\NIST20.L
TIC Integration Parameters: LSCINT.P

No Library Search Compounds Detected

Data Path : Z:\voasrv\HPCHEM1\MSVOA_W\Data\VW071125\
Data File : VW031833.D
Acq On : 11 Jul 2025 20:12
Operator : SY/MD
Sample : VIBLK
Misc : 5.00g/5mL/MSVOA_W/SOIL
ALS Vial : 18 Sample Multiplier: 1

Instrument :
MSVOA_W
ClientSampleId :
VIBLK

Quant Method : Z:\voasrv\HPCHEM1\MSVOA_W\Method\82W063025S.M
Quant Title : SW846 8260

TIC Library : C:\Database\NIST20.L
TIC Integration Parameters: LSCINT.P

TIC Top Hit name	RT	EstConc	Units	Response	--Internal Standard--			
					#	RT	Resp	Conc
