

Data Path : Z:\voasrv\HPCHEM1\MSVOA_W\Data\VW071222\
 Data File : VW023629.D
 Acq On : 13 Jul 2022 01:54
 Operator : SY/VA
 Sample : N3678-07
 Misc : 5.02g/10mL/MSVOA_W/SOIL
 ALS Vial : 1 Sample Multiplier: 1

Instrument :
 MSVOA_W
 ClientSampleId :
 F5B26

Integration Parameters: LSCINT.P

Integrator: RTE
 Smoothing : OFF
 Sampling : 1
 Start Thrs : 0.2
 Stop Thrs : 0

Filtering: 5
 Min Area: 0 % of largest Peak
 Max Peaks: 100
 Peak Location: TOP

If leading or trailing edge < 100 prefer < Baseline drop else tangent >
 Peak separation: 5

Method : Z:\voasrv\HPCHEM1\MSVOA_W\Method\SFAMWLM070722SMA.M
 Title : SFAM01.0

Signal : TIC: VW023629.D\data.ms

peak #	R.T. min	first scan	max scan	last scan	PK TY	peak height	corr. area	corr. % max.	% of total
1	2.343	68	72	79	rVB	126617	205439	13.68%	1.935%
2	3.605	277	279	280	rBV2	920	555	0.04%	0.005%
3	4.013	334	346	361	rBV3	103463	337333	22.46%	3.177%
4	4.318	394	396	397	rVB2	1555	918	0.06%	0.009%
5	4.336	397	399	401	rBV3	989	1154	0.08%	0.011%
6	4.641	447	449	451	rBV3	1028	590	0.04%	0.006%
7	4.672	451	454	455	rBV3	1195	1200	0.08%	0.011%
8	4.739	463	465	466	rBV2	808	579	0.04%	0.005%
9	4.836	479	481	482	rBV2	1096	818	0.05%	0.008%
10	4.915	483	494	506	rVV2	21792	78268	5.21%	0.737%
11	5.062	514	518	519	rBV4	1300	1498	0.10%	0.014%
12	5.232	544	546	548	rBV3	614	486	0.03%	0.005%
13	5.421	569	577	590	rVB3	9793	32045	2.13%	0.302%
14	5.507	590	591	594	rBV3	793	860	0.06%	0.008%
15	5.556	598	599	601	rBV2	697	712	0.05%	0.007%
16	5.659	612	616	617	rBV4	633	759	0.05%	0.007%
17	5.745	625	630	631	rBV5	1157	1850	0.12%	0.017%
18	5.763	631	633	634	rBV2	916	613	0.04%	0.006%
19	5.879	649	652	653	rBV2	685	727	0.05%	0.007%
20	5.934	655	661	670	rVB7	9012	26858	1.79%	0.253%
21	6.049	677	680	682	rBV4	882	1063	0.07%	0.010%
22	6.086	685	686	690	rVV4	727	832	0.06%	0.008%
23	6.135	692	694	698	rVB4	1413	1379	0.09%	0.013%
24	6.165	698	699	701	rBV2	607	549	0.04%	0.005%
25	6.269	712	716	718	rBV5	452	509	0.03%	0.005%
26	6.311	720	723	724	rBV3	620	689	0.05%	0.006%
27	6.366	730	732	733	rBV2	1343	736	0.05%	0.007%
28	6.427	740	742	745	rBV4	429	622	0.04%	0.006%
29	6.452	745	746	750	rVV3	1237	1276	0.08%	0.012%
30	6.500	752	754	755	rBV2	1006	750	0.05%	0.007%
31	6.531	755	759	761	rVV5	1031	1259	0.08%	0.012%
32	6.616	771	773	774	rBV2	663	482	0.03%	0.005%
33	6.635	774	776	780	rVB5	1319	1428	0.10%	0.013%
34	6.714	786	789	790	rBV3	693	910	0.06%	0.009%
35	6.732	790	792	794	rVB2	961	572	0.04%	0.005%
36	6.811	804	805	808	rBV2	1254	1160	0.08%	0.011%

Data Path : Z:\voasrv\HPCHEM1\MSVOA_W\Data\VW071222\
 Data File : VW023629.D
 Acq On : 13 Jul 2022 01:54
 Operator : SY/VA
 Sample : N3678-07
 Misc : 5.02g/10mL/MSVOA_W/SOIL
 ALS Vial : 1 Sample Multiplier: 1

Instrument :
 MSVOA_W
 ClientSampleId :
 F5B26

Integration Parameters: LSCINT.P

Integrator: RTE
 Smoothing : OFF
 Sampling : 1
 Start Thrs: 0.2
 Stop Thrs : 0

Filtering: 5
 Min Area: 0 % of largest Peak
 Max Peaks: 100
 Peak Location: TOP

If leading or trailing edge < 100 prefer < Baseline drop else tangent >
 Peak separation: 5

Method : Z:\voasrv\HPCHEM1\MSVOA_W\Method\SFAMWLM070722SMA.M
 Title : SFAM01.0

37	6.842	808	810	812	rVV3	822	518	0.03%	0.005%
38	6.860	812	813	814	rBV	985	546	0.04%	0.005%
39	6.939	825	826	829	rVB3	1266	992	0.07%	0.009%
40	6.976	829	832	836	rBV5	1341	1793	0.12%	0.017%
41	7.013	836	838	841	rBV4	1041	1301	0.09%	0.012%
42	7.080	842	849	854	rVV	33619	84323	5.61%	0.794%
43	7.165	855	863	878	rVB	563699	1502143	100.00%	14.149%
44	7.427	905	906	908	rVB2	1679	674	0.04%	0.006%
45	7.647	933	942	953	rVB	229045	552697	36.79%	5.206%
46	7.872	978	979	981	rBV2	1416	1150	0.08%	0.011%
47	8.025	1002	1004	1005	rVV2	903	570	0.04%	0.005%
48	8.067	1009	1011	1014	rBV3	664	829	0.06%	0.008%
49	8.147	1022	1024	1025	rBV2	838	627	0.04%	0.006%
50	8.165	1025	1027	1028	rVB2	1354	802	0.05%	0.008%
51	8.275	1033	1045	1061	rBV2	408995	1240467	82.58%	11.684%
52	8.683	1111	1112	1114	rVB2	1521	938	0.06%	0.009%
53	8.842	1129	1138	1150	rBV	491123	935318	62.27%	8.810%
54	9.079	1170	1177	1186	rVB3	9483	24331	1.62%	0.229%
55	9.274	1201	1209	1218	rBV	284107	581491	38.71%	5.477%
56	9.506	1245	1247	1250	rVB4	1186	1028	0.07%	0.010%
57	9.604	1261	1263	1264	rBV2	912	611	0.04%	0.006%
58	9.835	1298	1301	1305	rBV5	962	1136	0.08%	0.011%
59	9.890	1305	1310	1311	rBV5	1896	2898	0.19%	0.027%
60	9.957	1318	1321	1323	rBV3	803	959	0.06%	0.009%
61	10.036	1326	1334	1341	rVV	117912	215488	14.35%	2.030%
62	10.116	1345	1347	1350	rBV3	1925	2354	0.16%	0.022%
63	10.323	1371	1381	1388	rBV	577438	1000265	66.59%	9.422%
64	10.579	1416	1423	1431	rBV	75905	135707	9.03%	1.278%
65	10.701	1438	1443	1449	rBV3	6352	13705	0.91%	0.129%
66	10.841	1464	1466	1467	rBV2	1302	1117	0.07%	0.011%
67	10.927	1473	1480	1490	rBV	129539	233138	15.52%	2.196%
68	11.061	1498	1502	1508	rVB4	11343	20658	1.38%	0.195%
69	11.298	1538	1541	1545	rVB6	1198	1390	0.09%	0.013%
70	11.335	1545	1547	1549	rBV2	1391	1139	0.08%	0.011%
71	11.359	1549	1551	1553	rVB3	1089	706	0.05%	0.007%
72	11.439	1560	1564	1567	rVB3	4685	6720	0.45%	0.063%
73	11.628	1587	1595	1605	rBV	653390	1103290	73.45%	10.392%
74	12.146	1678	1680	1681	rBV2	1039	507	0.03%	0.005%
75	12.280	1699	1702	1703	rVV3	1289	863	0.06%	0.008%
76	12.298	1703	1705	1707	rVB3	831	580	0.04%	0.005%

Data Path : Z:\voasrv\HPCHEM1\MSVOA_W\Data\VW071222\
 Data File : VW023629.D
 Acq On : 13 Jul 2022 01:54
 Operator : SY/VA
 Sample : N3678-07
 Misc : 5.02g/10mL/MSVOA_W/SOIL
 ALS Vial : 1 Sample Multiplier: 1

Instrument :
 MSVOA_W
 ClientSampleId :
 F5B26

Integration Parameters: LSCINT.P

Integrator: RTE
 Smoothing : OFF Filtering: 5
 Sampling : 1 Min Area: 0 % of largest Peak
 Start Thrs: 0.2 Max Peaks: 100
 Stop Thrs : 0 Peak Location: TOP

If leading or trailing edge < 100 prefer < Baseline drop else tangent >
 Peak separation: 5

Method : Z:\voasrv\HPCHEM1\MSVOA_W\Method\SFAMWLM070722SMA.M
 Title : SFAM01.0

77	12.384	1716	1719	1721	rBV4	808	943	0.06%	0.009%
78	12.469	1730	1733	1736	rVB5	2432	2619	0.17%	0.025%
79	12.530	1741	1743	1744	rBV2	769	595	0.04%	0.006%
80	12.609	1747	1756	1761	rBV4	12358	28380	1.89%	0.267%
81	12.688	1763	1769	1779	rBV	229345	383041	25.50%	3.608%
82	12.841	1791	1794	1795	rBV3	1073	979	0.07%	0.009%
83	12.932	1805	1809	1818	rVB6	8590	15350	1.02%	0.145%
84	13.408	1878	1887	1893	rBV4	8920	22220	1.48%	0.209%
85	13.554	1905	1911	1918	rBV	595506	952754	63.43%	8.974%
86	13.853	1952	1960	1966	rBV	465819	786748	52.38%	7.411%
87	14.072	1991	1996	2004	rVB5	6601	17278	1.15%	0.163%
88	14.255	2023	2026	2028	rBV4	1682	2402	0.16%	0.023%
89	14.712	2098	2101	2106	rVB6	5151	8246	0.55%	0.078%
90	14.865	2123	2126	2127	rBV3	1481	1585	0.11%	0.015%
91	15.718	2264	2266	2268	rBV3	1102	1306	0.09%	0.012%
92	15.920	2298	2299	2301	rBV2	1115	616	0.04%	0.006%
93	16.194	2342	2344	2345	rBV2	1129	1132	0.08%	0.011%
94	16.249	2351	2353	2357	rVB5	1220	759	0.05%	0.007%
95	16.316	2362	2364	2365	rBV2	833	503	0.03%	0.005%
96	16.419	2378	2381	2383	rBV4	1353	1527	0.10%	0.014%
97	16.444	2383	2385	2389	rVB3	1615	1845	0.12%	0.017%
98	16.486	2389	2392	2393	rBV3	1263	1330	0.09%	0.013%
99	16.608	2411	2412	2413	rBV	878	507	0.03%	0.005%
100	16.700	2426	2427	2428	rBV	1216	539	0.04%	0.005%

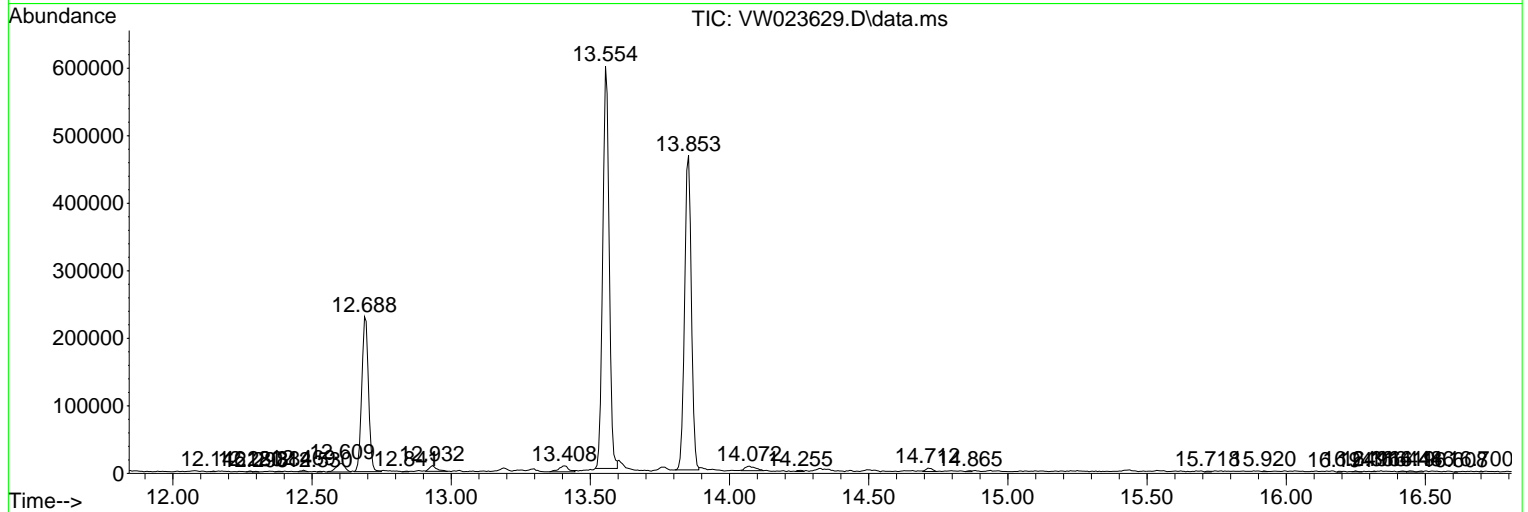
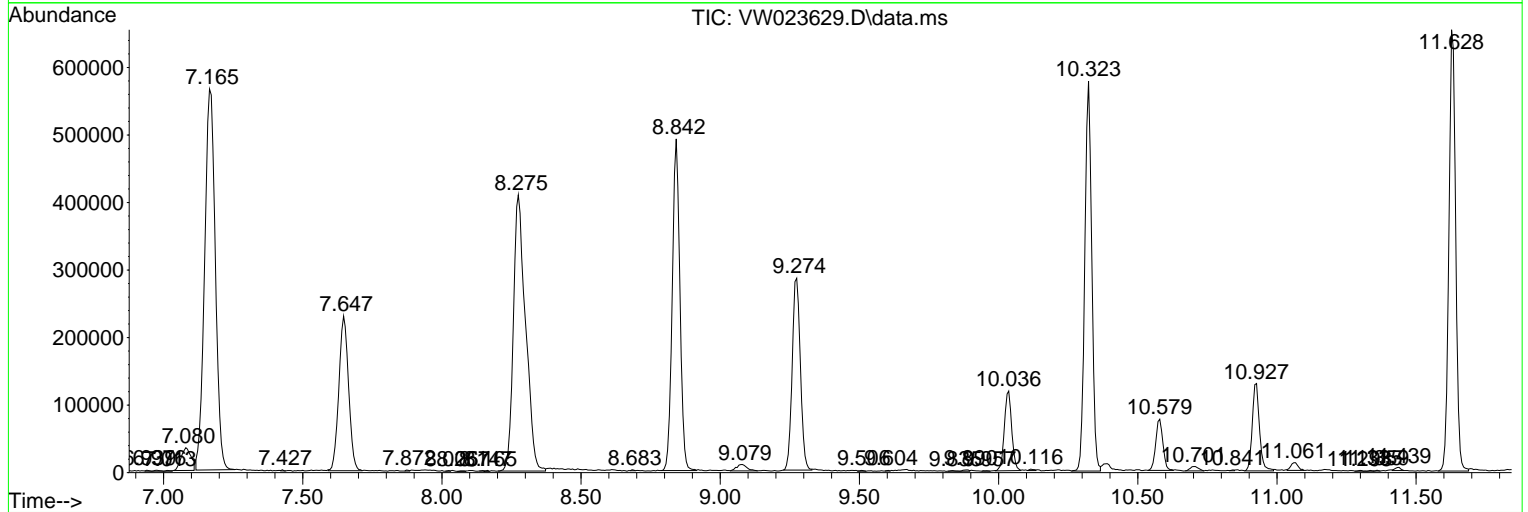
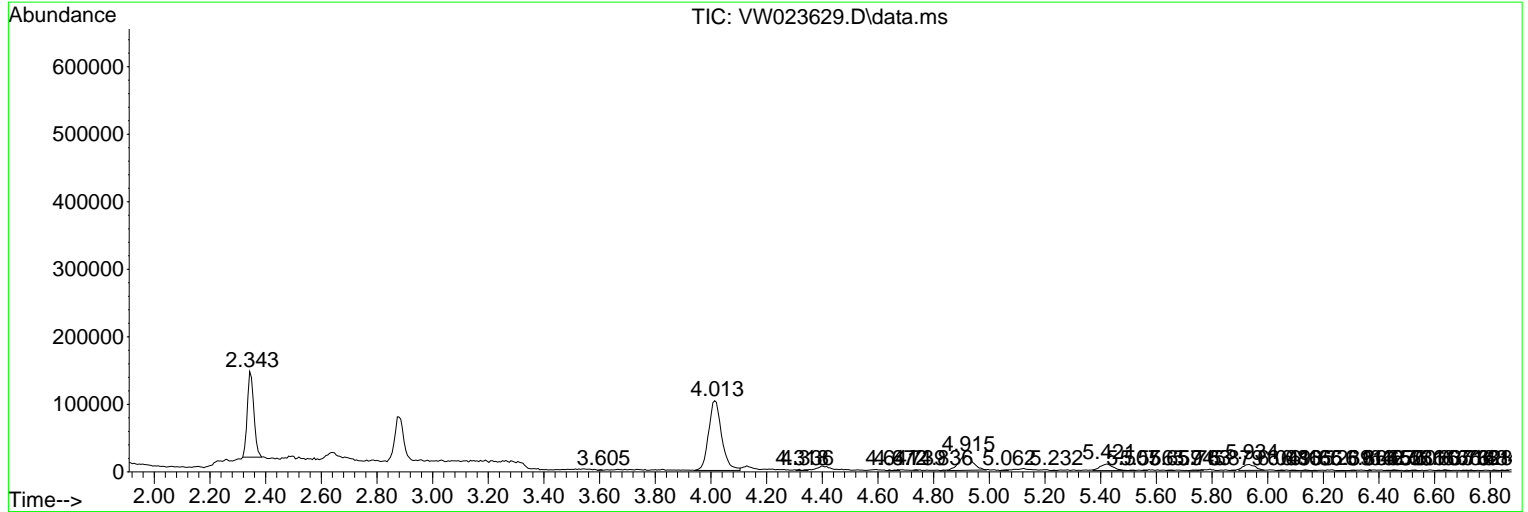
Sum of corrected areas: 10616451

Data Path : Z:\voasrv\HPCHEM1\MSVOA_W\Data\VW071222\
 Data File : VW023629.D
 Acq On : 13 Jul 2022 01:54
 Operator : SY/VA
 Sample : N3678-07
 Misc : 5.02g/10mL/MSVOA_W/SOIL
 ALS Vial : 1 Sample Multiplier: 1

Instrument :
 MSVOA_W
ClientSampleId :
 F5B26

Quant Method : Z:\voasrv\HPCHEM1\MSVOA_W\Method\SFAMWLM070722SMA.M
 Quant Title : SFAM01.0

TIC Library : C:\Database\NIST20.L
 TIC Integration Parameters: LSCINT.P



Library Search Compound Report

Data Path : Z:\voasrv\HPCHEM1\MSVOA_W\Data\VW071222\
Data File : VW023629.D
Acq On : 13 Jul 2022 01:54
Operator : SY/VA
Sample : N3678-07
Misc : 5.02g/10mL/MSVOA_W/SOIL
ALS Vial : 1 Sample Multiplier: 1

Instrument :
MSVOA_W
ClientSampleId :
F5B26

Quant Method : Z:\voasrv\HPCHEM1\MSVOA_W\Method\SFAMWLM070722SMA.M
Quant Title : SFAM01.0

TIC Library : C:\Database\NIST20.L
TIC Integration Parameters: LSCINT.P

No Library Search Compounds Detected

Data Path : Z:\voasrv\HPCHEM1\MSVOA_W\Data\VW071222\
Data File : VW023629.D
Acq On : 13 Jul 2022 01:54
Operator : SY/VA
Sample : N3678-07
Misc : 5.02g/10mL/MSVOA_W/SOIL
ALS Vial : 1 Sample Multiplier: 1

Instrument :
MSVOA_W
ClientSampleId :
F5B26

Quant Method : Z:\voasrv\HPCHEM1\MSVOA_W\Method\SFAMWLM070722SMA.M
Quant Title : SFAM01.0

TIC Library : C:\Database\NIST0.L
TIC Integration Parameters: LSCINT.P

TIC Top Hit name	RT	EstConc	Units	Response	--Internal Standard--		
					#	RT	Resp Conc
