

Data Path : Z:\voasrv\HPCHEM1\MSVOA_W\Data\VW071322\
 Data File : VW023675.D
 Acq On : 14 Jul 2022 03:54
 Operator : SY/VA
 Sample : N3679-09
 Misc : 5.54g/10mL/MSVOA_W/SOIL
 ALS Vial : 1 Sample Multiplier: 1

Instrument :
 MSVOA_W
 ClientSampleId :
 F5B49

Integration Parameters: LSCINT.P

Integrator: RTE
 Smoothing : OFF
 Sampling : 1
 Start Thrs: 0.2
 Stop Thrs : 0

Filtering: 5
 Min Area: 0 % of largest Peak
 Max Peaks: 100
 Peak Location: TOP

If leading or trailing edge < 100 prefer < Baseline drop else tangent >
 Peak separation: 5

Method : Z:\voasrv\HPCHEM1\MSVOA_W\Method\SFAMWLM071322SMA.M
 Title : SFAM01.0

Signal : TIC: VW023675.D\data.ms

peak #	R.T. min	first scan	max scan	last scan	PK TY	peak height	corr. area	corr. % max.	% of total
1	2.233	47	54	56	rBV3	9703	20838	2.66%	0.348%
2	2.349	68	73	80	rBV	98850	164728	21.05%	2.750%
3	2.879	156	160	169	rVB	56104	113960	14.56%	1.903%
4	3.794	308	310	313	rBV3	1409	1801	0.23%	0.030%
5	3.910	327	329	335	rVB5	1474	1761	0.23%	0.029%
6	4.013	335	346	358	rBV2	57424	184946	23.63%	3.088%
7	4.330	396	398	400	rBV3	982	1037	0.13%	0.017%
8	4.385	405	407	409	rBV3	2039	2213	0.28%	0.037%
9	4.696	454	458	459	rBV4	1328	1643	0.21%	0.027%
10	4.720	459	462	464	rVB4	1577	1243	0.16%	0.021%
11	4.812	475	477	481	rVB5	1277	1544	0.20%	0.026%
12	4.916	481	494	505	rBV4	15364	56062	7.16%	0.936%
13	5.196	539	540	543	rBV3	1128	1298	0.17%	0.022%
14	5.403	569	574	577	rBV6	1907	3459	0.44%	0.058%
15	5.501	587	590	592	rBV4	934	1104	0.14%	0.018%
16	5.604	605	607	611	rVB4	1394	1553	0.20%	0.026%
17	5.647	611	614	615	rBV3	1068	1011	0.13%	0.017%
18	5.684	618	620	622	rBV3	1335	1154	0.15%	0.019%
19	5.751	629	631	635	rBV5	1311	1709	0.22%	0.029%
20	5.934	656	661	664	rBV5	3934	7244	0.93%	0.121%
21	6.049	676	680	681	rBV3	962	966	0.12%	0.016%
22	6.178	697	701	702	rBV4	1049	1372	0.18%	0.023%
23	6.245	710	712	714	rBV3	1030	1118	0.14%	0.019%
24	6.391	732	736	737	rBV4	830	1150	0.15%	0.019%
25	6.403	737	738	742	rVB4	1813	1563	0.20%	0.026%
26	6.629	772	775	776	rVV3	1564	1432	0.18%	0.024%
27	6.738	791	793	795	rVB2	1164	983	0.13%	0.016%
28	6.763	795	797	800	rBV4	1164	1180	0.15%	0.020%
29	6.940	822	826	828	rBV5	1064	990	0.13%	0.017%
30	7.001	833	836	838	rBV3	1738	1930	0.25%	0.032%
31	7.086	841	850	855	rBV	23734	62939	8.04%	1.051%
32	7.342	890	892	894	rVB3	1511	1087	0.14%	0.018%
33	7.372	894	897	900	rBV5	813	1373	0.18%	0.023%
34	7.531	921	923	925	rVB3	1329	997	0.13%	0.017%
35	7.555	925	927	929	rBV2	1112	997	0.13%	0.017%
36	7.586	929	932	933	rVV2	889	1023	0.13%	0.017%

Data Path : Z:\voasrv\HPCHEM1\MSVOA_W\Data\VW071322\
 Data File : VW023675.D
 Acq On : 14 Jul 2022 03:54
 Operator : SY/VA
 Sample : N3679-09
 Misc : 5.54g/10mL/MSVOA_W/SOIL
 ALS Vial : 1 Sample Multiplier: 1

Instrument :
 MSVOA_W
 ClientSampleId :
 F5B49

Integration Parameters: LSCINT.P

Integrator: RTE
 Smoothing : OFF
 Sampling : 1
 Start Thrs: 0.2
 Stop Thrs : 0

Filtering: 5
 Min Area: 0 % of largest Peak
 Max Peaks: 100
 Peak Location: TOP

If leading or trailing edge < 100 prefer < Baseline drop else tangent >
 Peak separation: 5

Method : Z:\voasrv\HPCHEM1\MSVOA_W\Method\SFAMWLM071322SMA.M
 Title : SFAM01.0

37	7.647	933	942	953	rVV	136293	337687	43.15%	5.638%
38	7.738	955	957	959	rVB4	1575	1191	0.15%	0.020%
39	7.988	996	998	1000	rBV3	1040	1032	0.13%	0.017%
40	8.275	1033	1045	1059	rBV2	253813	782558	100.00%	13.065%
41	8.610	1098	1100	1102	rVB3	1267	1014	0.13%	0.017%
42	8.842	1128	1138	1153	rBV	279080	546852	69.88%	9.130%
43	9.079	1170	1177	1185	rBV9	7467	16762	2.14%	0.280%
44	9.275	1200	1209	1220	rBV	184914	378334	48.35%	6.316%
45	9.372	1223	1225	1228	rVV4	1548	1618	0.21%	0.027%
46	9.598	1260	1262	1264	rBV3	1452	1157	0.15%	0.019%
47	9.652	1267	1271	1276	rBV8	2441	4836	0.62%	0.081%
48	10.037	1324	1334	1343	rVV	72447	135687	17.34%	2.265%
49	10.122	1343	1348	1357	rVB10	2998	6161	0.79%	0.103%
50	10.189	1357	1359	1361	rBV3	1072	1123	0.14%	0.019%
51	10.323	1372	1381	1387	rBV	361376	614718	78.55%	10.263%
52	10.390	1388	1392	1399	rVB	18838	32983	4.21%	0.551%
53	10.573	1415	1422	1429	rBV	47479	85800	10.96%	1.432%
54	10.695	1437	1442	1452	rVB4	6967	15235	1.95%	0.254%
55	10.768	1452	1454	1455	rBV2	1458	1043	0.13%	0.017%
56	10.829	1463	1464	1466	rBV2	1187	1005	0.13%	0.017%
57	10.927	1474	1480	1489	rVB	93014	161428	20.63%	2.695%
58	11.061	1498	1502	1506	rBV5	7128	10196	1.30%	0.170%
59	11.164	1517	1519	1523	rVB5	1181	1129	0.14%	0.019%
60	11.329	1543	1546	1549	rVB4	1218	1771	0.23%	0.030%
61	11.427	1560	1562	1569	rVB6	3135	5307	0.68%	0.089%
62	11.628	1585	1595	1606	rBV	403245	686015	87.66%	11.453%
63	11.798	1622	1623	1626	rBV3	887	977	0.12%	0.016%
64	11.823	1626	1627	1629	rBV2	1134	980	0.13%	0.016%
65	11.969	1647	1651	1653	rBV4	998	1292	0.17%	0.022%
66	12.164	1679	1683	1685	rBV5	2041	2964	0.38%	0.049%
67	12.231	1692	1694	1698	rBV5	1077	1191	0.15%	0.020%
68	12.268	1698	1700	1703	rVB4	1690	1682	0.21%	0.028%
69	12.298	1703	1705	1706	rBV2	1141	1016	0.13%	0.017%
70	12.347	1711	1713	1718	rVB6	983	1727	0.22%	0.029%
71	12.512	1737	1740	1744	rVB6	1681	1955	0.25%	0.033%
72	12.597	1747	1754	1761	rBV5	9140	20298	2.59%	0.339%
73	12.689	1762	1769	1776	rBV	156181	264099	33.75%	4.409%
74	12.932	1805	1809	1817	rVB	5101	10201	1.30%	0.170%
75	13.079	1829	1833	1834	rBV3	956	1210	0.15%	0.020%
76	13.188	1848	1851	1856	rVB6	3581	5109	0.65%	0.085%

Data Path : Z:\voasrv\HPCHEM1\MSVOA_W\Data\VW071322\
 Data File : VW023675.D
 Acq On : 14 Jul 2022 03:54
 Operator : SY/VA
 Sample : N3679-09
 Misc : 5.54g/10mL/MSVOA_W/SOIL
 ALS Vial : 1 Sample Multiplier: 1

Instrument :
 MSVOA_W
 ClientSampleId :
 F5B49

Integration Parameters: LSCINT.P

Integrator: RTE
 Smoothing : OFF Filtering: 5
 Sampling : 1 Min Area: 0 % of largest Peak
 Start Thrs: 0.2 Max Peaks: 100
 Stop Thrs : 0 Peak Location: TOP

If leading or trailing edge < 100 prefer < Baseline drop else tangent >
 Peak separation: 5

Method : Z:\voasrv\HPCHEM1\MSVOA_W\Method\SFAMWLM071322SMA.M
 Title : SFAM01.0

77	13.402	1881	1886	1892	rVB7	5951	10403	1.33%	0.174%
78	13.554	1905	1911	1923	rBV	367323	609230	77.85%	10.171%
79	13.762	1939	1945	1949	rBV9	5227	10038	1.28%	0.168%
80	13.853	1953	1960	1966	rVV	310101	521476	66.64%	8.706%
81	14.011	1983	1986	1987	rBV3	2071	1966	0.25%	0.033%
82	14.060	1992	1994	1996	rBV3	3059	3507	0.45%	0.059%
83	14.194	2013	2016	2018	rBV4	1437	1333	0.17%	0.022%
84	14.261	2025	2027	2029	rBV3	1682	1088	0.14%	0.018%
85	14.572	2075	2078	2082	rBV6	1339	1767	0.23%	0.030%
86	14.609	2082	2084	2087	rBV3	1433	2058	0.26%	0.034%
87	14.719	2099	2102	2108	rVB6	6186	9070	1.16%	0.151%
88	14.786	2108	2113	2114	rBV5	1415	1626	0.21%	0.027%
89	14.883	2126	2129	2131	rBV4	1730	2042	0.26%	0.034%
90	14.938	2137	2138	2140	rBV2	1396	1250	0.16%	0.021%
91	15.170	2172	2176	2177	rBV4	2011	2068	0.26%	0.035%
92	15.395	2211	2213	2215	rBV3	1403	1296	0.17%	0.022%
93	15.609	2246	2248	2251	rVB4	1051	1177	0.15%	0.020%
94	15.798	2276	2279	2280	rBV3	1343	1400	0.18%	0.023%
95	15.871	2290	2291	2297	rBV6	1358	1829	0.23%	0.031%
96	16.066	2319	2323	2325	rBV5	906	1444	0.18%	0.024%
97	16.212	2346	2347	2350	rVV3	1729	1165	0.15%	0.019%
98	16.353	2366	2370	2373	rBV6	883	1555	0.20%	0.026%
99	16.413	2376	2380	2381	rBV4	930	1109	0.14%	0.019%
100	16.584	2406	2408	2411	rBV4	1025	1099	0.14%	0.018%

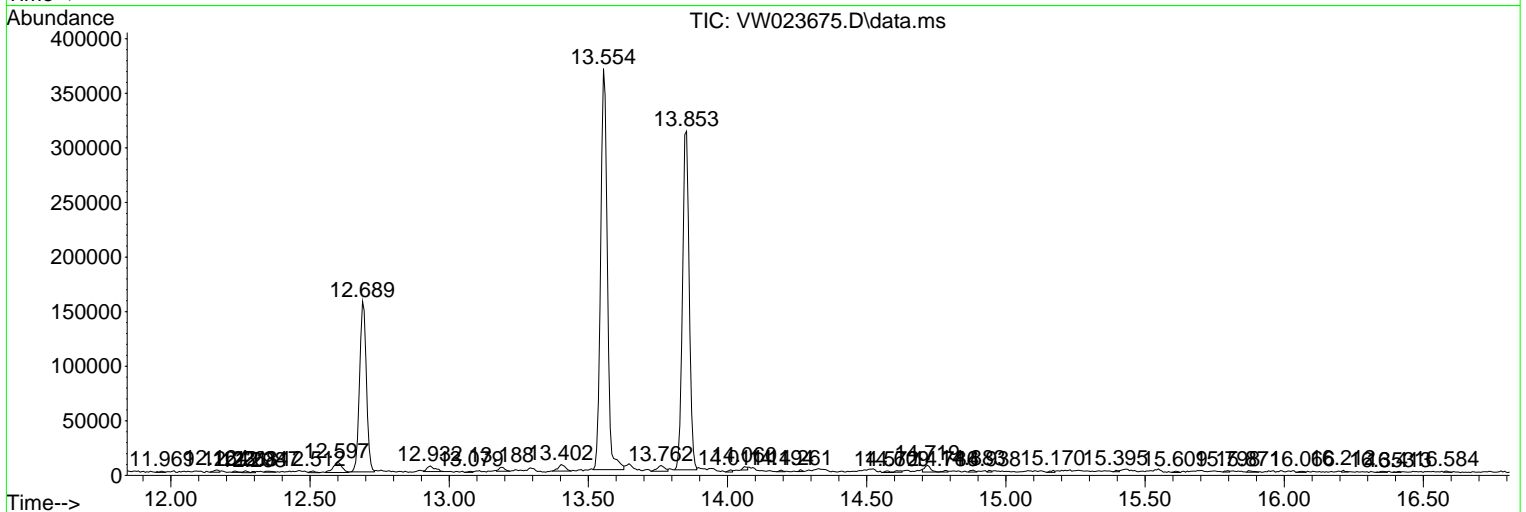
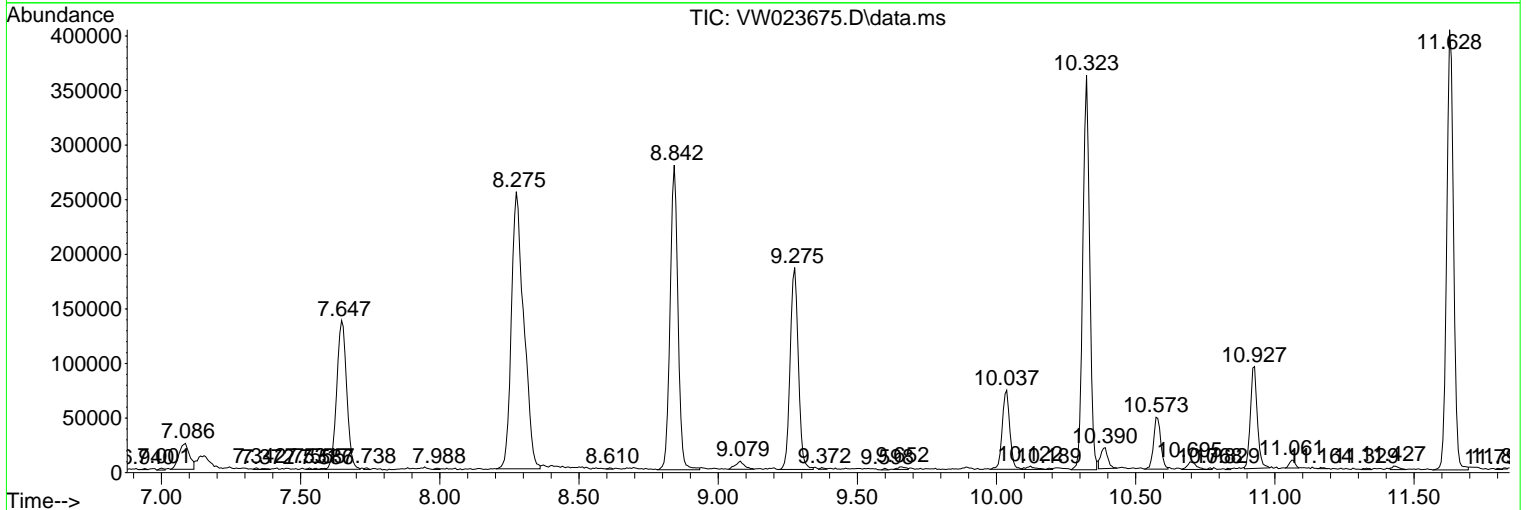
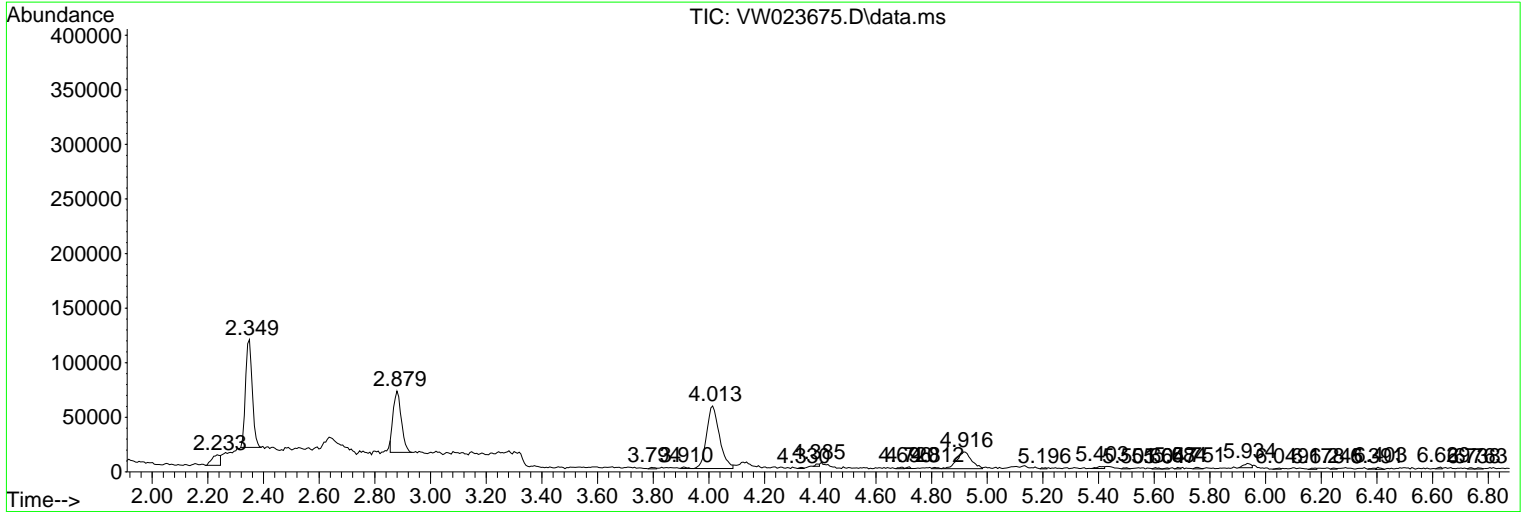
Sum of corrected areas: 5989747

Data Path : Z:\voasrv\HPCHEM1\MSVOA_W\Data\VW071322\
 Data File : VW023675.D
 Acq On : 14 Jul 2022 03:54
 Operator : SY/VA
 Sample : N3679-09
 Misc : 5.54g/10mL/MSVOA_W/SOIL
 ALS Vial : 1 Sample Multiplier: 1

Instrument :
 MSVOA_W
 ClientSampleId :
 F5B49

Quant Method : Z:\voasrv\HPCHEM1\MSVOA_W\Method\SFAMWLM071322SMA.M
 Quant Title : SFAM01.0

TIC Library : C:\Database\NIST20.L
 TIC Integration Parameters: LSCINT.P



Library Search Compound Report

Data Path : Z:\voasrv\HPCHEM1\MSVOA_W\Data\VW071322\
Data File : VW023675.D
Acq On : 14 Jul 2022 03:54
Operator : SY/VA
Sample : N3679-09
Misc : 5.54g/10mL/MSVOA_W/SOIL
ALS Vial : 1 Sample Multiplier: 1

Instrument :
MSVOA_W
ClientSampleId :
F5B49

Quant Method : Z:\voasrv\HPCHEM1\MSVOA_W\Method\SFAMWLM071322SMA.M
Quant Title : SFAM01.0

TIC Library : C:\Database\NIST20.L
TIC Integration Parameters: LSCINT.P

No Library Search Compounds Detected

Data Path : Z:\voasrv\HPCHEM1\MSVOA_W\Data\VW071322\
Data File : VW023675.D
Acq On : 14 Jul 2022 03:54
Operator : SY/VA
Sample : N3679-09
Misc : 5.54g/10mL/MSVOA_W/SOIL
ALS Vial : 1 Sample Multiplier: 1

Instrument :
MSVOA_W
ClientSampleId :
F5B49

Quant Method : Z:\voasrv\HPCHEM1\MSVOA_W\Method\SFAMWLM071322SMA.M
Quant Title : SFAM01.0

TIC Library : C:\Database\NIST20.L
TIC Integration Parameters: LSCINT.P

TIC Top Hit name	RT	EstConc	Units	Response	--Internal Standard--			
					#	RT	Resp	Conc
