

Data Path : Z:\voasrv\HPCHEM1\MSVOA_W\Data\VW071422\
 Data File : VW023742.D
 Acq On : 15 Jul 2022 11:20
 Operator : SY/VA
 Sample : N3701-09
 Misc : 6.08g/10mL/MSVOA_W/SOIL
 ALS Vial : 1 Sample Multiplier: 1

Instrument :
 MSVOA_W
ClientSampleId :
 F5B82

Manual Integrations
APPROVED
 Reviewed By :Krupa Patel 07/18/2022
 Supervised By :Mahesh Dadoda 07/18/2022

Quant Time: Jul 15 11:53:03 2022
 Quant Method : Z:\voasrv\HPCHEM1\MSVOA_W\Method\SFAMWLM071322SMA.M
 Quant Title : SFAM01.0
 QLast Update : Fri Jul 15 06:03:21 2022
 Response via : Initial Calibration

Compound	R.T.	QIon	Response	Conc	Units	Dev(Min)
Internal Standards						
1) 1,4-Difluorobenzene	8.842	114	214834	25.000	ug/L	0.00
28) Chlorobenzene-d5	11.628	117	193410	25.000	ug/L	0.00
58) 1,4-Dichlorobenzene-d4	13.554	152	84570	25.000	ug/L	0.00
System Monitoring Compounds						
4) Vinyl Chloride-d3	2.349	65	85367	15.558	ug/L	0.00
Spiked Amount	25.000	Range 30 - 150	Recovery =	62.240%		
7) Chloroethane-d5	2.879	69	76057	20.778	ug/L	0.00
Spiked Amount	25.000	Range 30 - 150	Recovery =	83.120%		
11) 1,1-Dichloroethene-d2	4.013	63	51085	11.433	ug/L	0.00
Spiked Amount	25.000	Range 45 - 110	Recovery =	45.720%		
21) 2-Butanone-d5	7.080	46	35207	41.367	ug/L	0.00
Spiked Amount	50.000	Range 20 - 135	Recovery =	82.740%		
24) Chloroform-d	7.647	84	114772	18.349	ug/L	0.00
Spiked Amount	25.000	Range 40 - 150	Recovery =	73.400%		
26) 1,2-Dichloroethane-d4	8.305	65	74891m	19.577	ug/L	0.00
Spiked Amount	25.000	Range 70 - 130	Recovery =	78.320%		
32) Benzene-d6	8.275	84	221888	22.069	ug/L	0.00
Spiked Amount	25.000	Range 20 - 135	Recovery =	88.280%		
36) 1,2-Dichloropropane-d6	9.274	67	72063	23.795	ug/L	0.00
Spiked Amount	25.000	Range 70 - 120	Recovery =	95.200%		
41) Toluene-d8	10.323	98	201338	19.743	ug/L	0.00
Spiked Amount	25.000	Range 30 - 130	Recovery =	78.960%		
43) trans-1,3-Dichloroprop...	10.579	79	18173	12.802	ug/L	0.00
Spiked Amount	25.000	Range 30 - 135	Recovery =	51.200%		
47) 2-Hexanone-d5	10.920	63	26312	41.317	ug/L	0.00
Spiked Amount	50.000	Range 20 - 135	Recovery =	82.640%		
56) 1,1,2,2-Tetrachloroeth...	12.694	84	64386	19.238	ug/L	0.00
Spiked Amount	25.000	Range 45 - 120	Recovery =	76.960%		
66) 1,2-Dichlorobenzene-d4	13.853	152	60817	20.145	ug/L	0.00
Spiked Amount	25.000	Range 75 - 120	Recovery =	80.560%		
Target Compounds						
13) Acetone	4.129	43	7494	12.454	ug/L	76
14) Carbon disulfide	4.385	76	22948m	3.426	ug/L	
63) 1,2,4-Trimethylbenzene	13.249	105	6716	0.722	ug/L	100

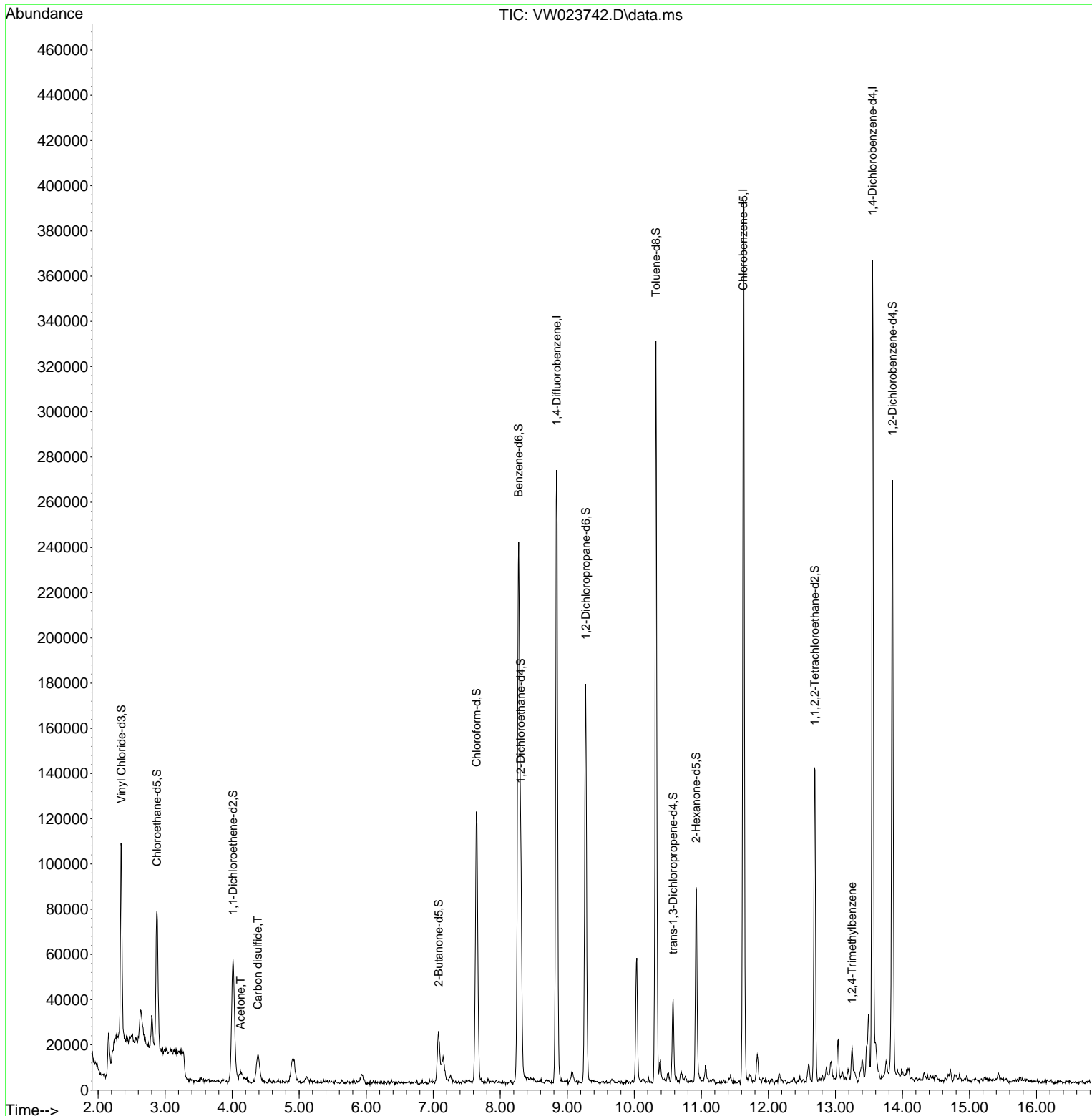
(#) = qualifier out of range (m) = manual integration (+) = signals summed

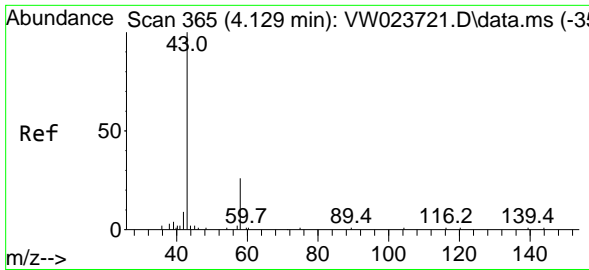
Data Path : Z:\voasrv\HPCHEM1\MSVOA_W\Data\VW071422\
 Data File : VW023742.D
 Acq On : 15 Jul 2022 11:20
 Operator : SY/VA
 Sample : N3701-09
 Misc : 6.08g/10mL/MSVOA_W/SOIL
 ALS Vial : 1 Sample Multiplier: 1

Instrument :
 MSVOA_W
ClientSampleId :
 F5B82

Quant Time: Jul 15 11:53:03 2022
 Quant Method : Z:\voasrv\HPCHEM1\MSVOA_W\Method\SFAMWLM071322SMA.M
 Quant Title : SFAM01.0
 QLast Update : Fri Jul 15 06:03:21 2022
 Response via : Initial Calibration

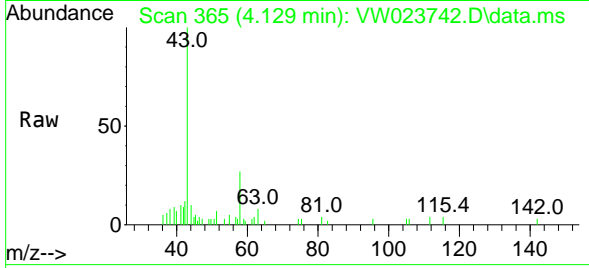
Manual Integrations
APPROVED
 Reviewed By :Krupa Patel 07/18/2022
 Supervised By :Mahesh Dadoda 07/18/2022





#13
 Acetone
 Concen: 12.454 ug/L
 RT: 4.129 min Scan# 365
 Delta R.T. -0.000 min
 Lab File: VW023742.D
 Acq: 15 Jul 2022 11:20

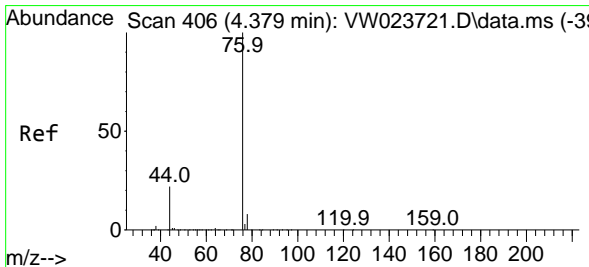
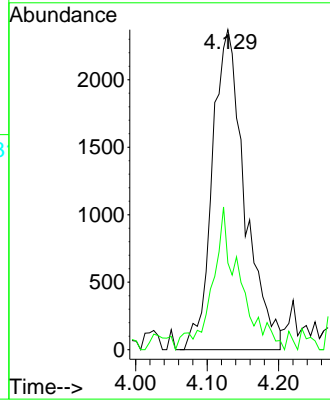
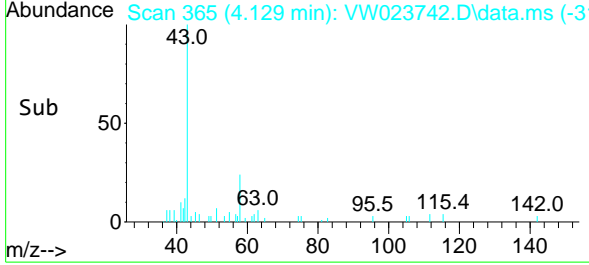
Instrument : MSVOA_W
 Client Sampled : F5B82



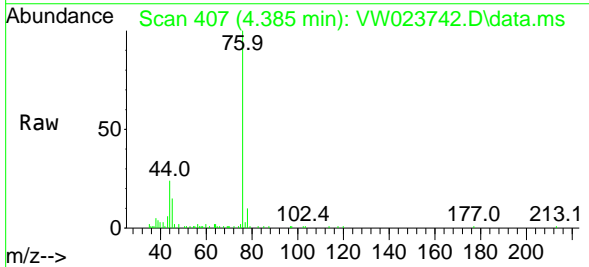
Tgt Ion: 43 Resp: 7494
 Ion Ratio Lower Upper
 43 100
 58 18.9 0.0 64.2

Manual Integrations
 APPROVED

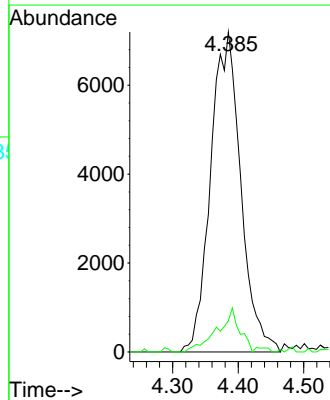
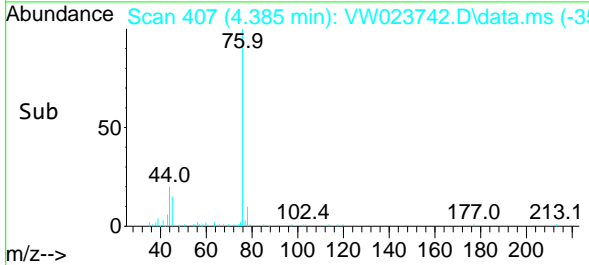
Reviewed By :Krupa Patel 07/18/2022
 Supervised By :Mahesh Dadoda 07/18/2022

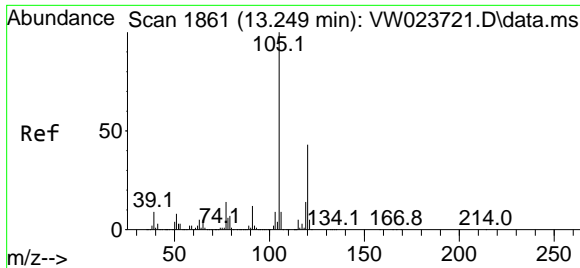


#14
 Carbon disulfide
 Concen: 3.426 ug/L m
 RT: 4.385 min Scan# 407
 Delta R.T. 0.006 min
 Lab File: VW023742.D
 Acq: 15 Jul 2022 11:20



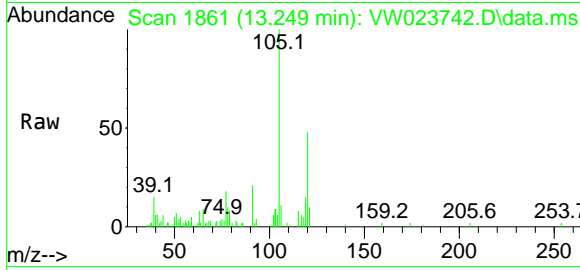
Tgt Ion: 76 Resp: 22948
 Ion Ratio Lower Upper
 76 100
 78 9.7 7.2 10.8





#63
 1,2,4-Trimethylbenzene
 Concen: 0.722 ug/L
 RT: 13.249 min Scan# 1861
 Delta R.T. -0.000 min
 Lab File: VW023742.D
 Acq: 15 Jul 2022 11:20

Instrument : MSVOA_W
 Client Sample Id : F5B82



Tgt Ion: 105 Resp: 6710
 Ion Ratio Lower Upper
 105 100
 120 44.6 35.5 53.3

Manual Integrations
APPROVED
 Reviewed By : Krupa Patel 07/18/2022
 Supervised By : Mahesh Dadoda 07/18/2022

