

Data Path : Z:\VOASRV\HPCHEM1\MSVOA W\DATA\VW071618\  
 Data File : VW003955.D  
 Acq On : 16 Jul 2018 17:05  
 Operator : VA/AP  
 Sample : J3948-05RE  
 Misc : 5.00G/5ML/MSVOA W/SOIL  
 ALS Vial : 13 Sample Multiplier: 1

Instrument :  
 MSVOA\_W  
 ClientSampleId :  
 2018-NYSEG-CLARK-ST-PH4-AREA

Quant Time: Jul 16 17:26:10 2018  
 Quant Method : Z:\VOASRV\HPCHEM1\MSVOA\_W\METHOD\82W071618S.M  
 Quant Title : SW846 8260  
 QLast Update : Mon Jul 16 15:06:12 2018  
 Response via : Initial Calibration

Internal Standards	R.T.	QIon	Response	Conc	Units	Dev(Min)
1) Pentafluorobenzene	7.95	168	35932	50.00	ug/l	0.00
34) 1,4-Difluorobenzene	8.85	114	61907	50.00	ug/l	0.00
63) Chlorobenzene-d5	11.63	117	58392	50.00	ug/l	0.00
72) 1,4-Dichlorobenzene-d4	13.57	152	25013	50.00	ug/l	0.00

## System Monitoring Compounds

33) 1,2-Dichloroethane-d4	8.31	65	30247	75.31	ug/l	0.00
Spiked Amount				50.000		
Recovery				=	150.62%	
35) Dibromofluoromethane	7.88	113	24655	62.07	ug/l	0.00
Spiked Amount				50.000		
Recovery				=	124.14%	
50) Toluene-d8	10.33	98	67886	44.05	ug/l	0.00
Spiked Amount				50.000		
Recovery				=	88.10%	
62) 4-Bromofluorobenzene	12.62	95	26564	47.80	ug/l	0.00
Spiked Amount				50.000		
Recovery				=	95.60%	

## Target Compounds

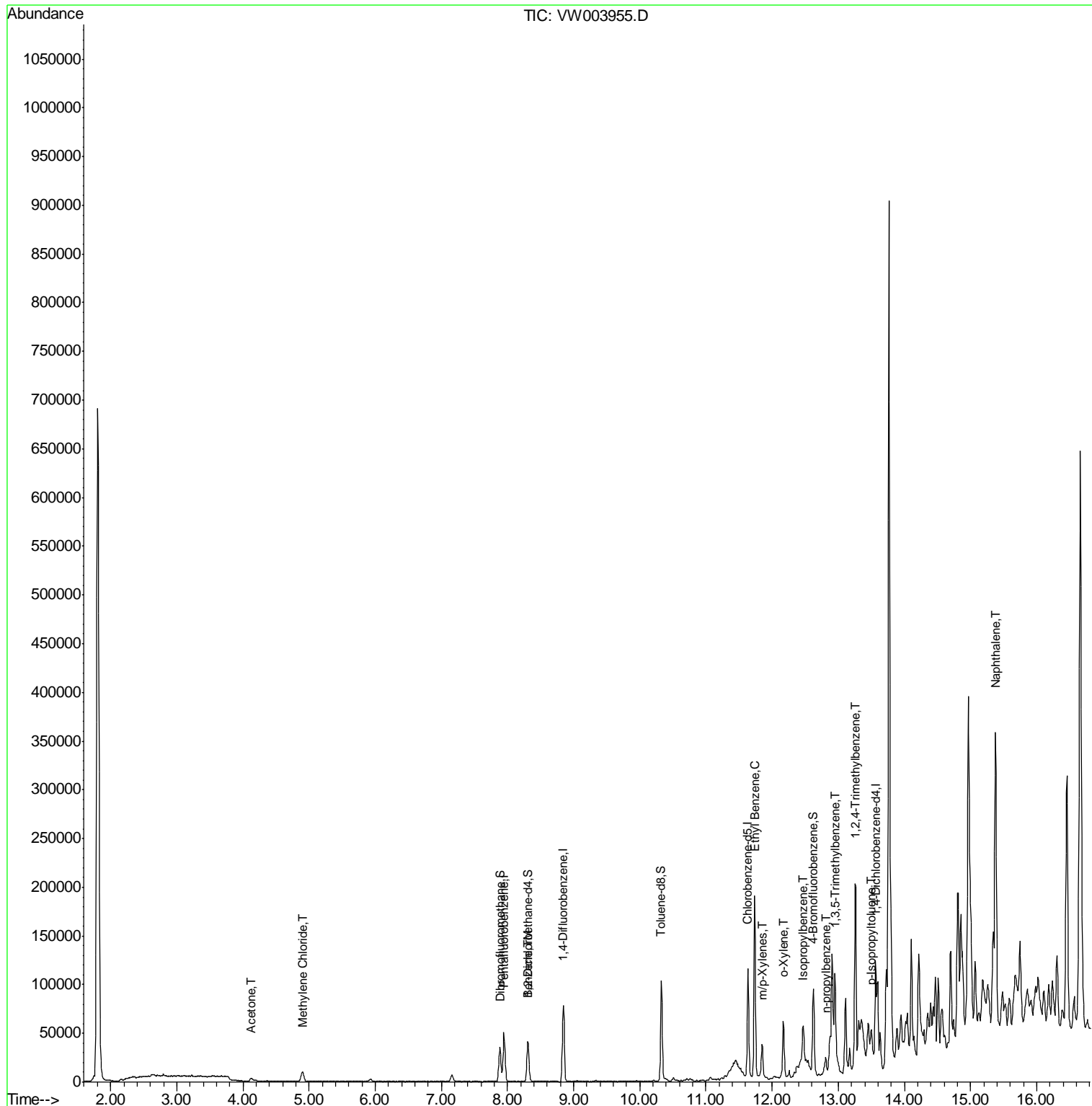
						Qvalue
16) Acetone	4.12	43	6127	63.48	ug/l	# 87
20) Methylene Chloride	4.90	84	6956	10.04	ug/l	86
40) Benzene	8.32	78	4995	2.83	ug/l	97
67) Ethyl Benzene	11.74	91	124085	56.89	ug/l	99
68) m/p-Xylenes	11.85	106	7692	9.23	ug/l	97
69) o-Xylene	12.17	106	14034	18.15	ug/l	93
73) Isopropylbenzene	12.47	105	22851	12.93	ug/l	99
78) n-propylbenzene	12.81	91	11742	5.42	ug/l	99
80) 1,3,5-Trimethylbenzene	12.95	105	36550	24.57	ug/l	97
84) 1,2,4-Trimethylbenzene	13.26	105	103555	67.67	ug/l	99
86) p-Isopropyltoluene	13.51	119	8869	5.46	ug/l	94
95) Naphthalene	15.38	128	252107	258.41	ug/l	99

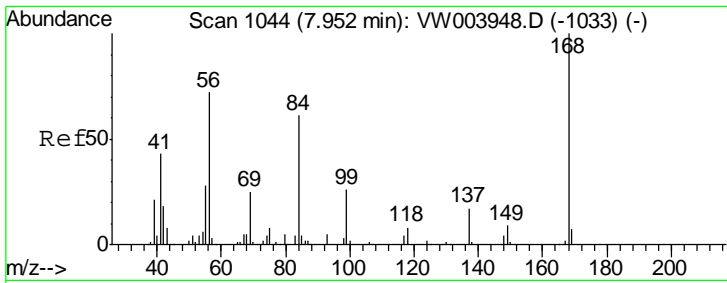
(#) = qualifier out of range (m) = manual integration (+) = signals summed

Data Path : Z:\VOASRV\HPCHEM1\MSVOA W\DATA\VW071618\  
 Data File : VW003955.D  
 Acq On : 16 Jul 2018 17:05  
 Operator : VA/AP  
 Sample : J3948-05RE  
 Misc : 5.00G/5ML/MSVOA W/SOIL  
 ALS Vial : 13 Sample Multiplier: 1

Instrument :  
 MSVOA\_W  
 Client Sampled :  
 2018-NYSEG-CLARK-ST-PH4-AREA

Quant Time: Jul 16 17:26:10 2018  
 Quant Method : Z:\VOASRV\HPCHEM1\MSVOA\_W\METHOD\82W071618S.M  
 Quant Title : SW846 8260  
 QLast Update : Mon Jul 16 15:06:12 2018  
 Response via : Initial Calibration

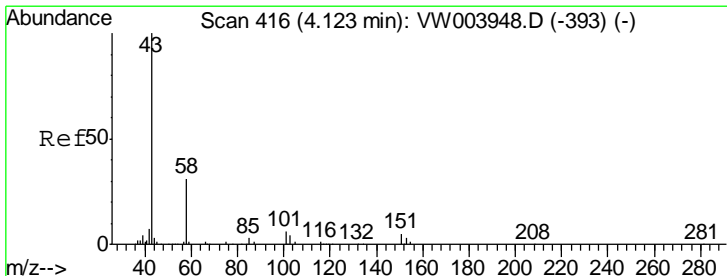
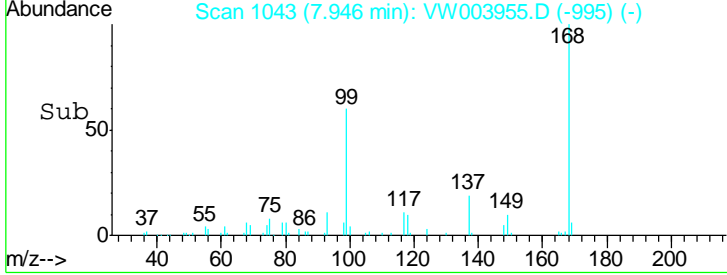
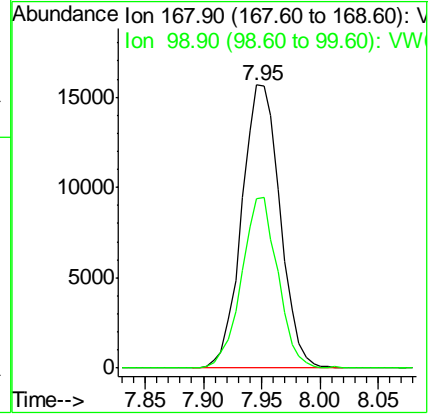
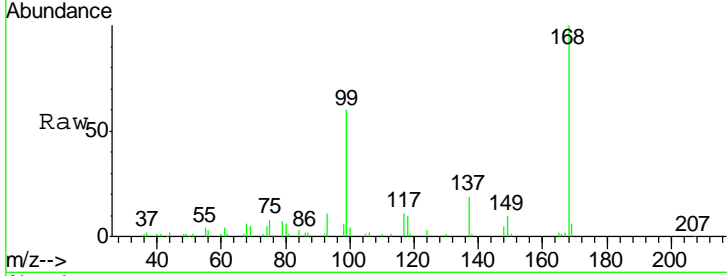




#1  
 Pentafluorobenzene  
 Concen: 50.00 ug/l  
 RT: 7.95 min Scan# 1043  
 Delta R.T. -0.01 min  
 Lab File: VW003955.D  
 Acq: 16 Jul 2018 17:05

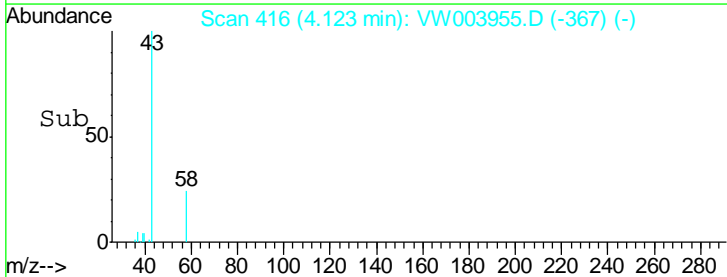
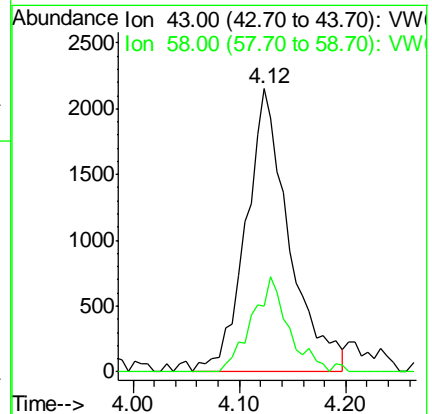
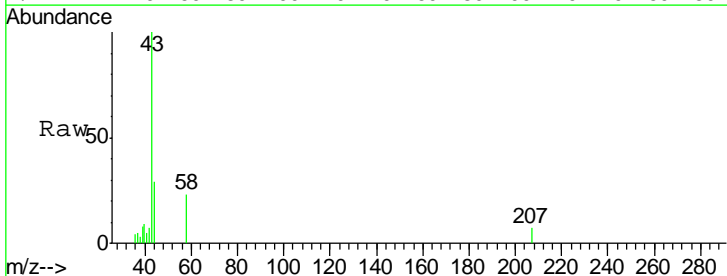
Instrument :  
 MSVOA\_W  
 ClientSampled :  
 2018-NYSEG-CLARK-ST-PH4-AREA

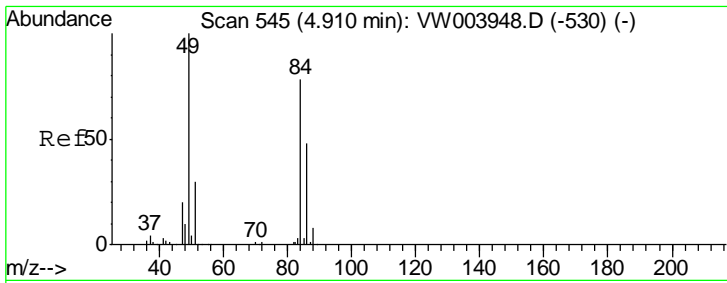
Tgt Ion: 168 Resp: 35932  
 Ion Ratio Lower Upper  
 168 100  
 99 59.9 43.8 65.6



#16  
 Acetone  
 Concen: 63.48 ug/l  
 RT: 4.12 min Scan# 416  
 Delta R.T. 0.00 min  
 Lab File: VW003955.D  
 Acq: 16 Jul 2018 17:05

Tgt Ion: 43 Resp: 6127  
 Ion Ratio Lower Upper  
 43 100  
 58 23.4 24.5 36.7#

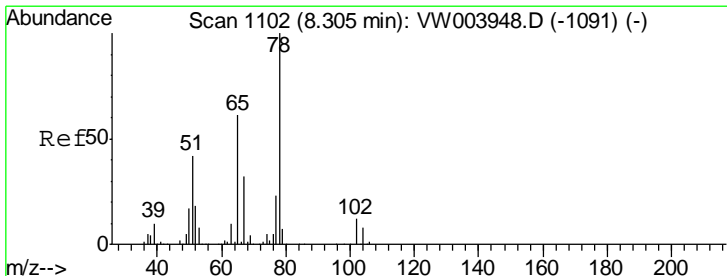
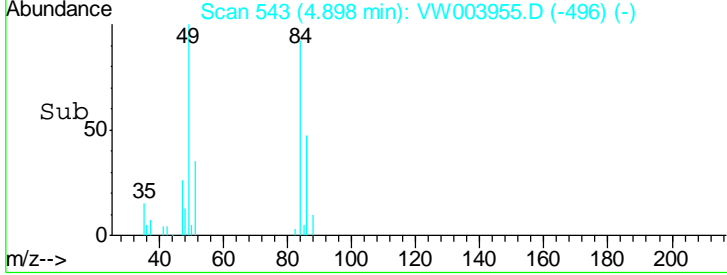
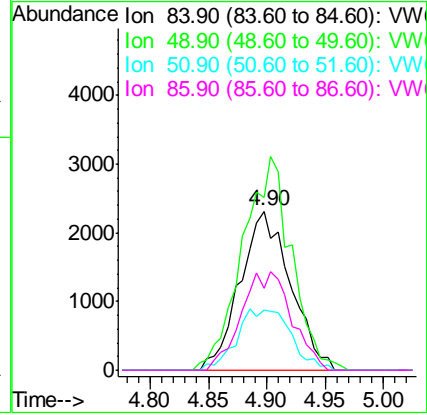
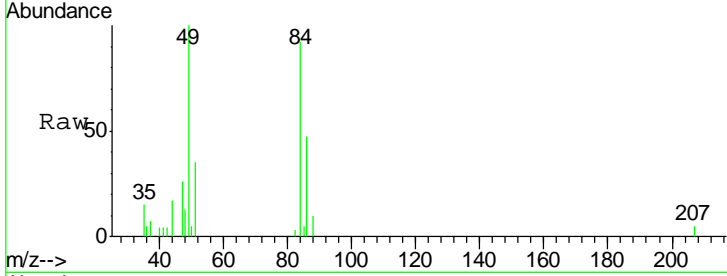




#20  
 Methylene Chloride  
 Concen: 10.04 ug/l  
 RT: 4.90 min Scan# 543  
 Delta R.T. -0.01 min  
 Lab File: VW003955.D  
 Acq: 16 Jul 2018 17:05

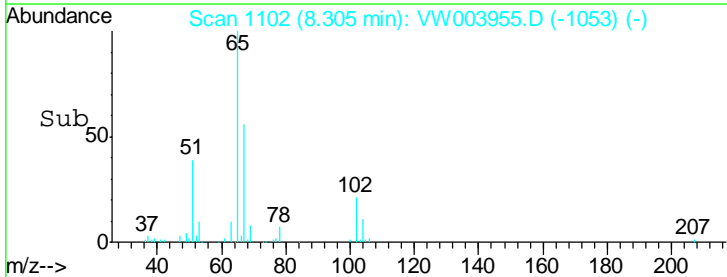
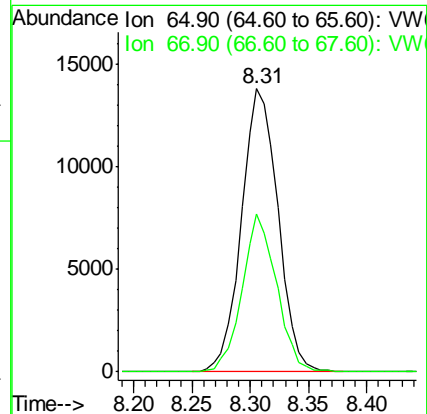
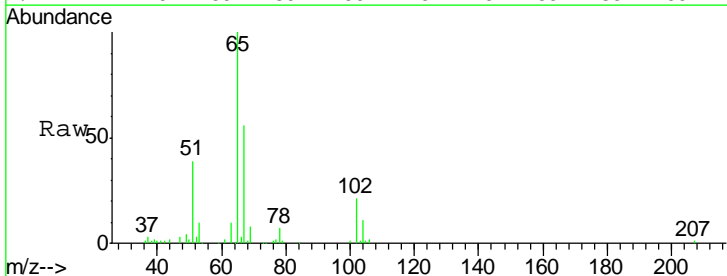
**Instrument :**  
 MSVOA\_W  
**ClientSampled :**  
 2018-NYSEG-CLARK-ST-PH4-AREA

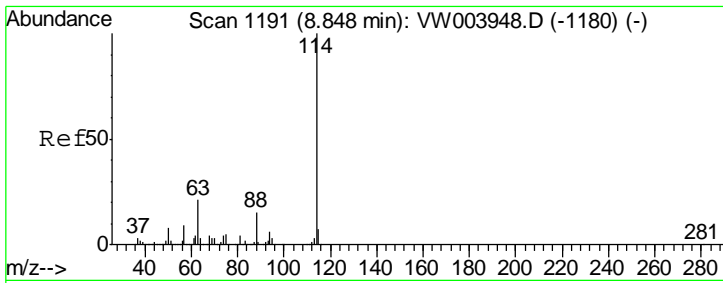
Tgt Ion	Resp	Lower	Upper
84	6956		
49	108.9	102.9	154.3
51	37.7	30.9	46.3
86	51.7	49.9	74.9



#33  
 1,2-Dichloroethane-d4  
 Concen: 75.31 ug/l  
 RT: 8.31 min Scan# 1102  
 Delta R.T. 0.00 min  
 Lab File: VW003955.D  
 Acq: 16 Jul 2018 17:05

Tgt Ion	Resp	Lower	Upper
65	30247		
67	52.6	0.0	105.0

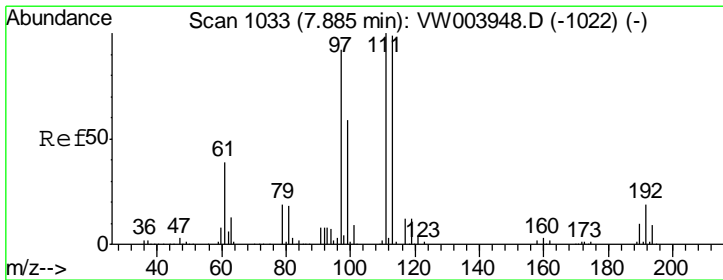
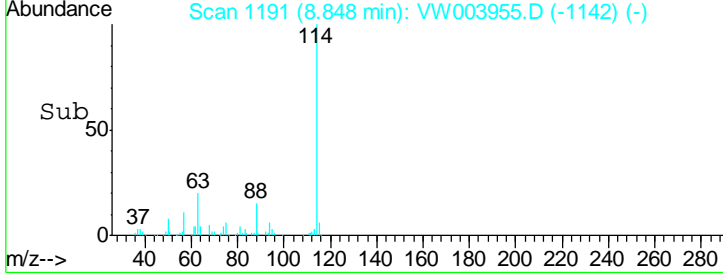
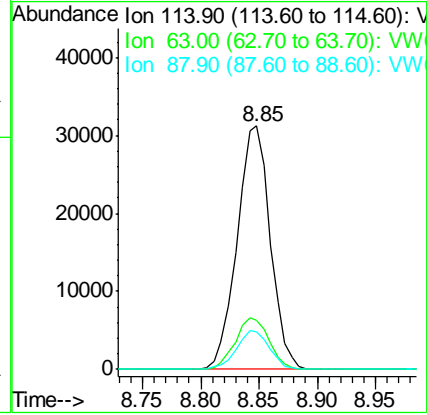
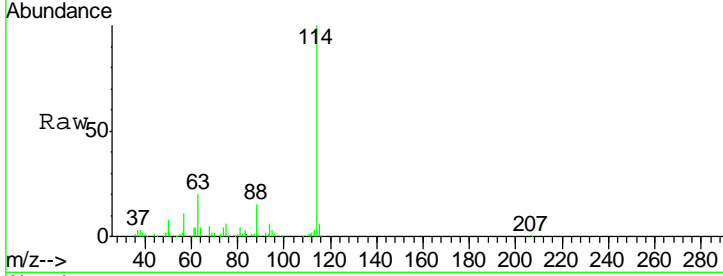




#34  
 1,4-Difluorobenzene  
 Concen: 50.00 ug/l  
 RT: 8.85 min Scan# 1191  
 Delta R.T. 0.00 min  
 Lab File: VW003955.D  
 Acq: 16 Jul 2018 17:05

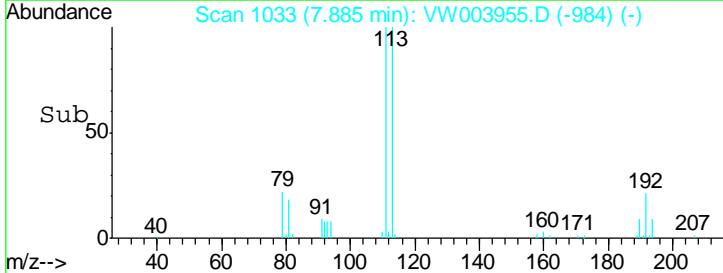
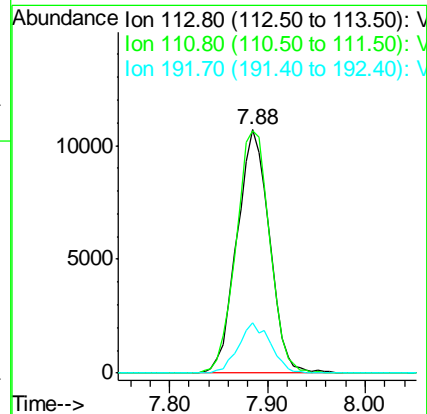
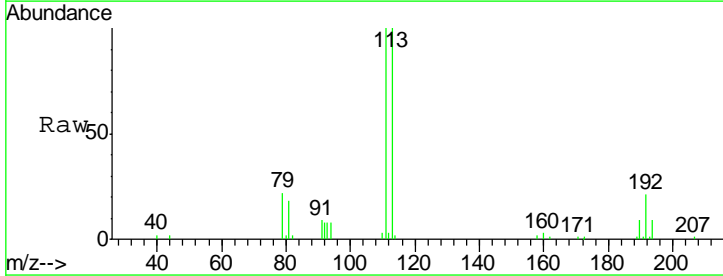
Instrument :  
 MSVOA\_W  
 ClientSampleId :  
 2018-NYSEG-CLARK-ST-PH4-AREA

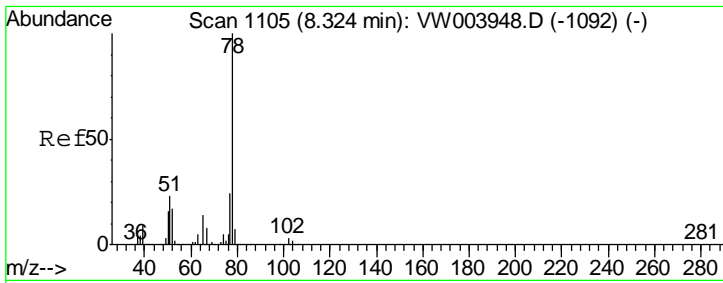
Tgt Ion	Resp	Lower	Upper
114	61907		
63	20.4	0.0	42.8
88	15.4	0.0	30.4



#35  
 Dibromofluoromethane  
 Concen: 62.07 ug/l  
 RT: 7.88 min Scan# 1033  
 Delta R.T. 0.00 min  
 Lab File: VW003955.D  
 Acq: 16 Jul 2018 17:05

Tgt Ion	Resp	Lower	Upper
113	24655		
111	103.0	81.3	121.9
192	20.5	15.8	23.6

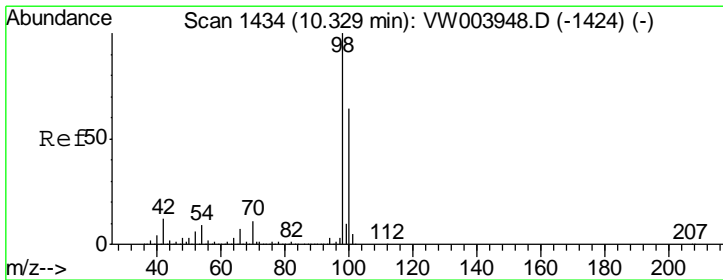
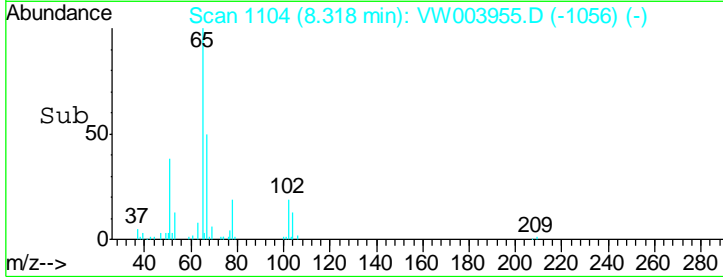
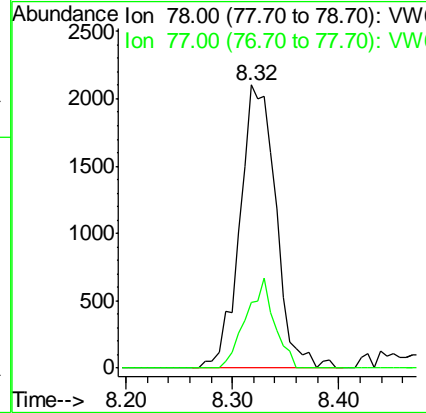
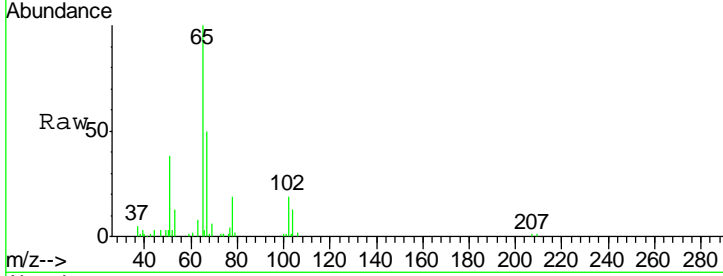




#40  
Benzene  
Concen: 2.83 ug/l  
RT: 8.32 min Scan# 1104  
Delta R.T. -0.01 min  
Lab File: VW003955.D  
Acq: 16 Jul 2018 17:05

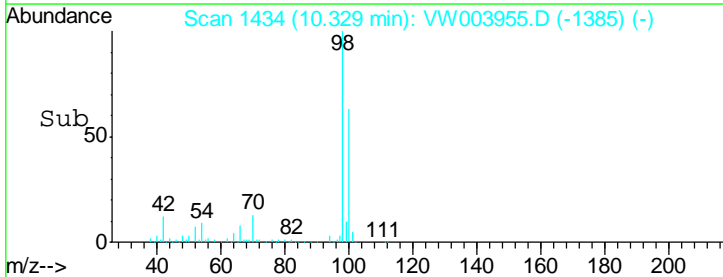
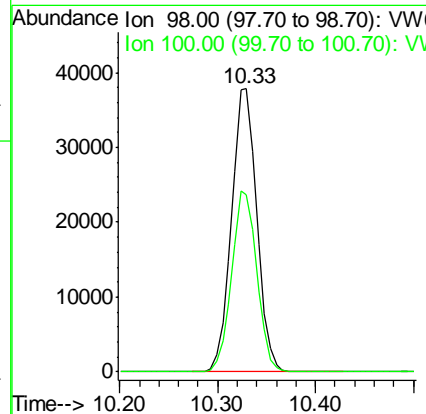
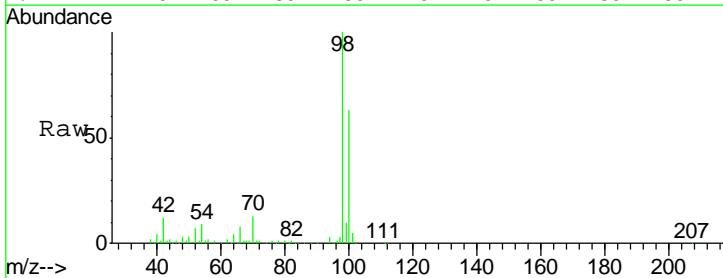
Instrument : MSVOA\_W  
ClientSampleId : 2018-NYSEG-CLARK-ST-PH4-AREA

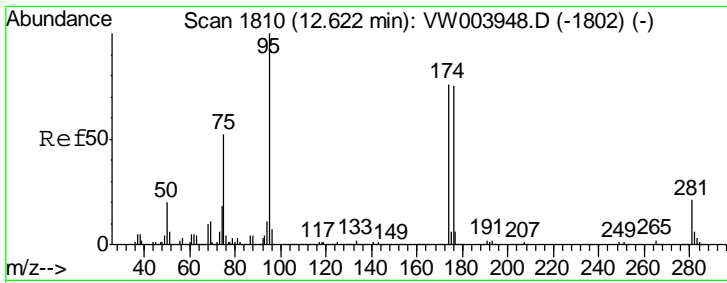
Tgt Ion: 78 Resp: 4995  
Ion Ratio Lower Upper  
78 100  
77 23.1 19.5 29.3



#50  
Toluene-d8  
Concen: 44.05 ug/l  
RT: 10.33 min Scan# 1434  
Delta R.T. 0.00 min  
Lab File: VW003955.D  
Acq: 16 Jul 2018 17:05

Tgt Ion: 98 Resp: 67886  
Ion Ratio Lower Upper  
98 100  
100 63.5 51.2 76.8

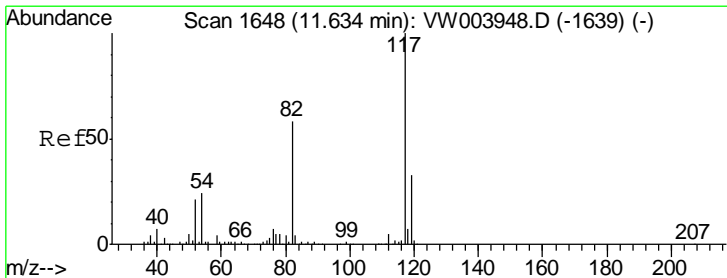
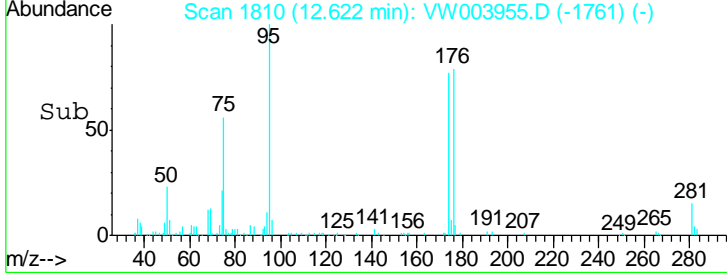
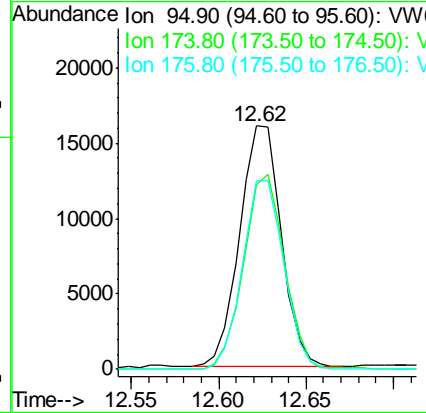
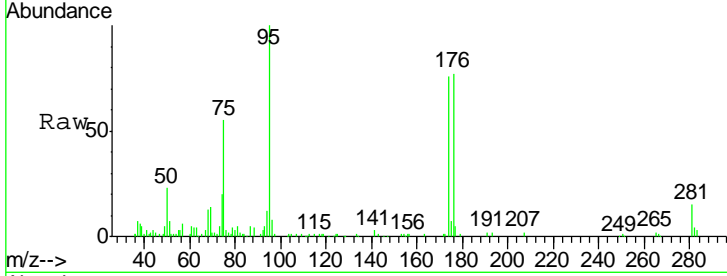




#62  
 4-Bromofluorobenzene  
 Concen: 47.80 ug/l  
 RT: 12.62 min Scan# 1810  
 Delta R.T. 0.00 min  
 Lab File: VW003955.D  
 Acq: 16 Jul 2018 17:05

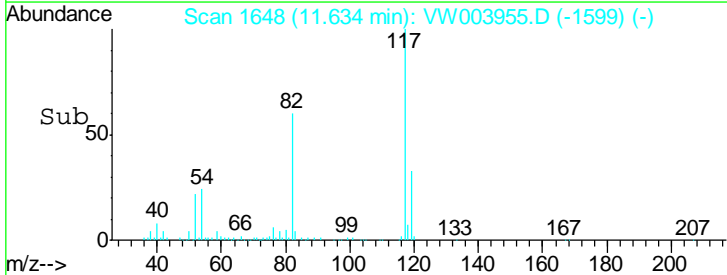
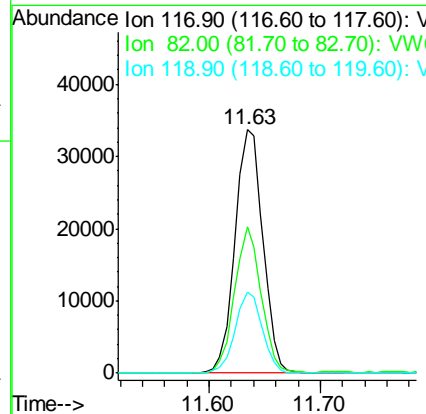
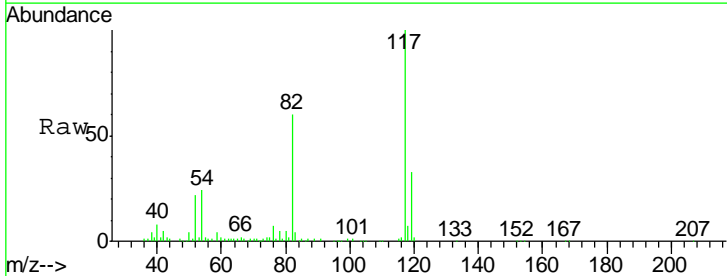
Instrument :  
 MSVOA\_W  
 ClientSampleId :  
 2018-NYSEG-CLARK-ST-PH4-AREA

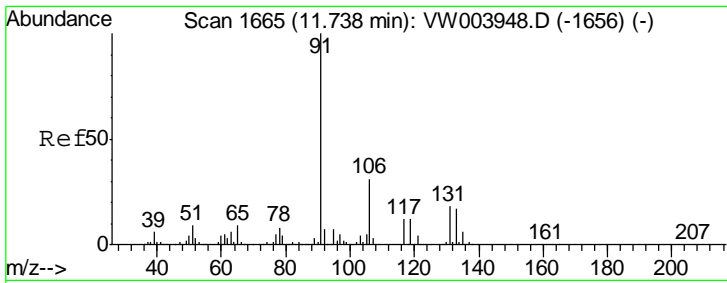
Tgt Ion	Resp	Lower	Upper
95	26564		
174	79.3	0.0	160.2
176	77.8	0.0	155.8



#63  
 Chlorobenzene-d5  
 Concen: 50.00 ug/l  
 RT: 11.63 min Scan# 1648  
 Delta R.T. 0.00 min  
 Lab File: VW003955.D  
 Acq: 16 Jul 2018 17:05

Tgt Ion	Resp	Lower	Upper
117	58392		
82	59.7	46.5	69.7
119	33.3	26.2	39.2

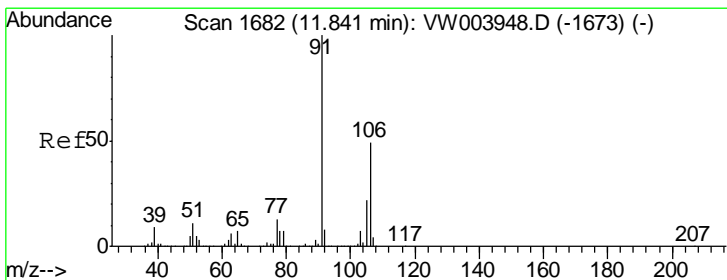
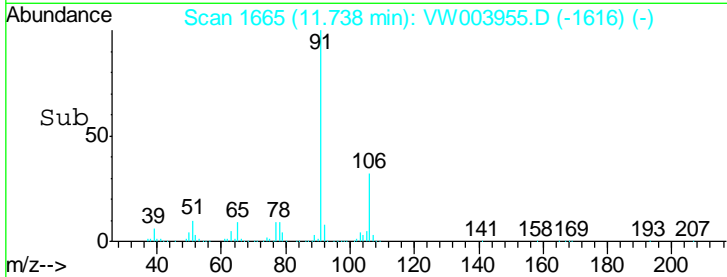
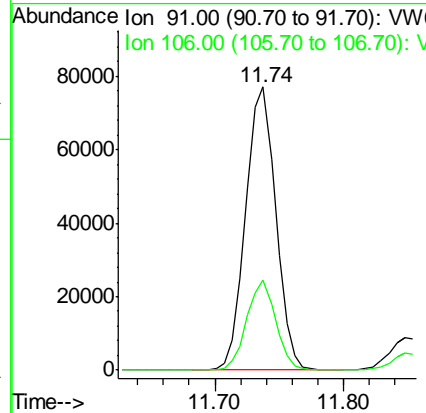
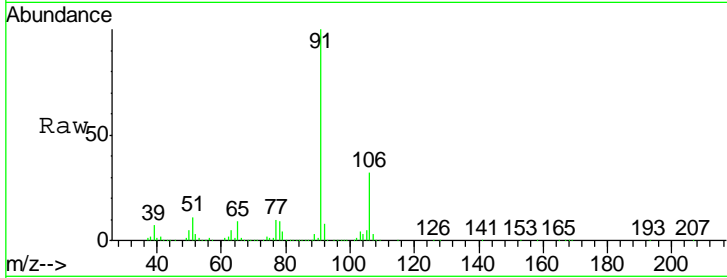




#67  
 Ethyl Benzene  
 Concen: 56.89 ug/l  
 RT: 11.74 min Scan# 1665  
 Delta R.T. 0.00 min  
 Lab File: VW003955.D  
 Acq: 16 Jul 2018 17:05

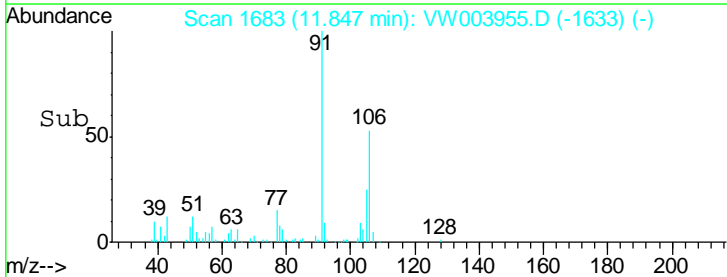
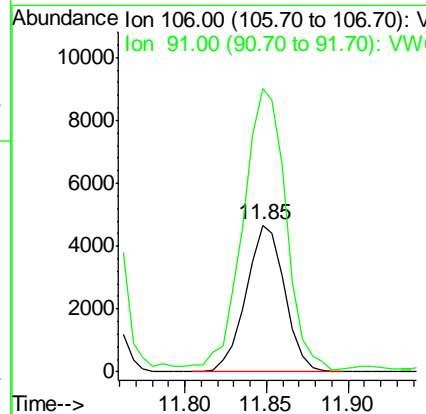
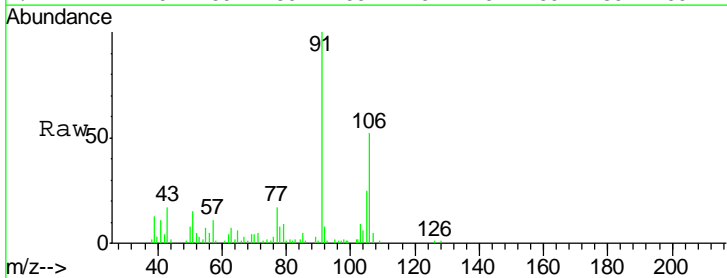
Instrument :  
 MSVOA\_W  
 ClientSampleId :  
 2018-NYSEG-CLARK-ST-PH4-AREA

Tgt Ion: 91 Resp: 124085  
 Ion Ratio Lower Upper  
 91 100  
 106 31.6 25.0 37.4

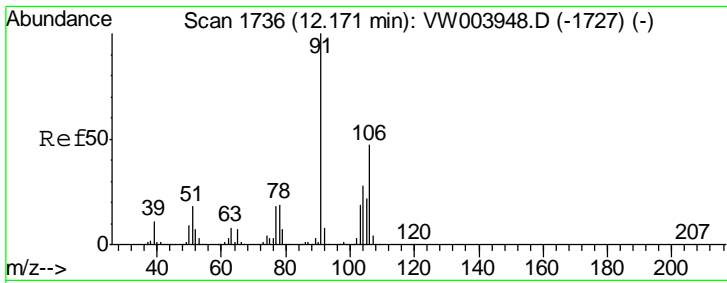


#68  
 m/p-Xylenes  
 Concen: 9.23 ug/l  
 RT: 11.85 min Scan# 1683  
 Delta R.T. 0.01 min  
 Lab File: VW003955.D  
 Acq: 16 Jul 2018 17:05

Tgt Ion: 106 Resp: 7692  
 Ion Ratio Lower Upper  
 106 100  
 91 209.5 164.2 246.2



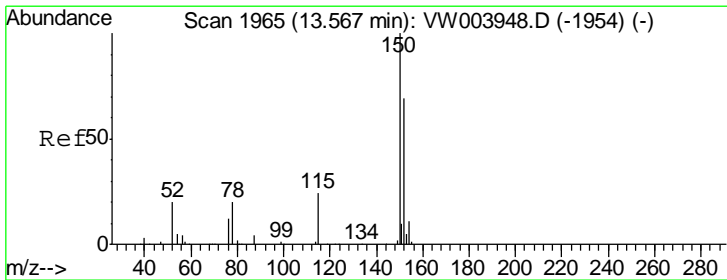
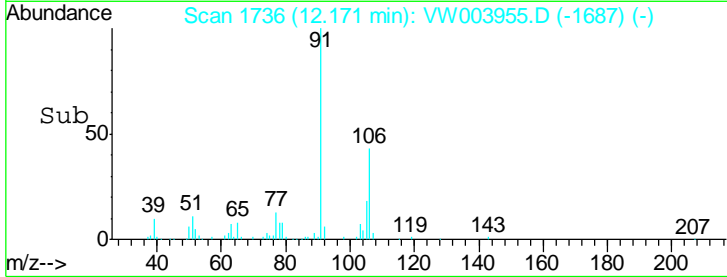
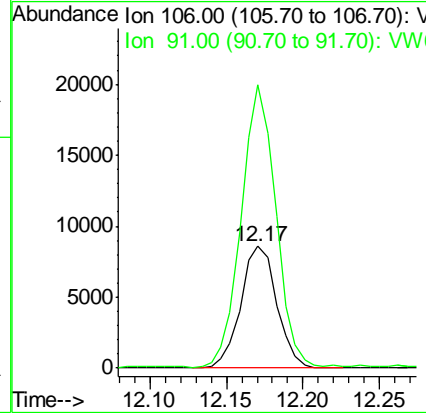
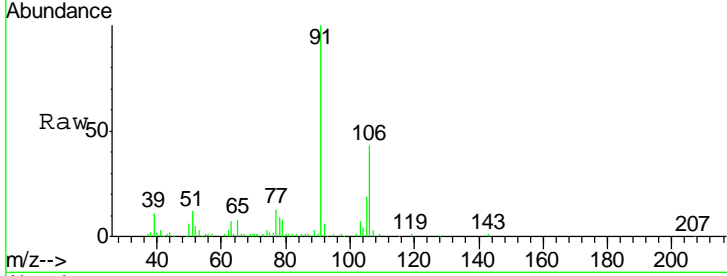




#69  
 o-Xylene  
 Concen: 18.15 ug/l  
 RT: 12.17 min Scan# 1736  
 Delta R.T. 0.00 min  
 Lab File: VW003955.D  
 Acq: 16 Jul 2018 17:05

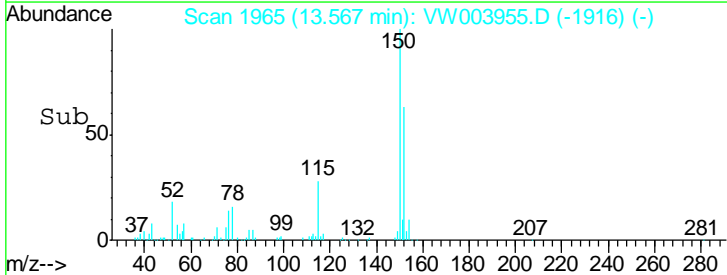
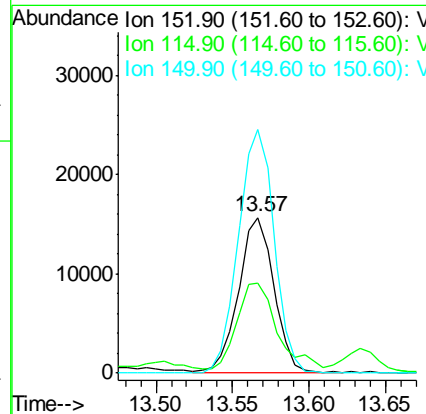
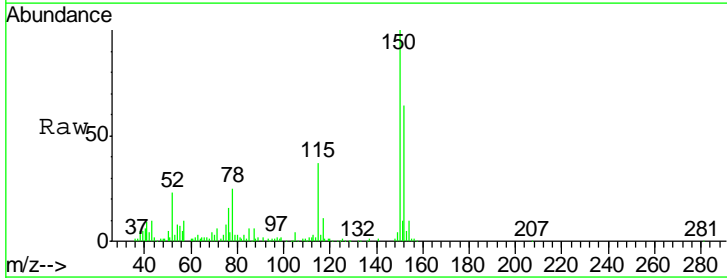
Instrument :  
 MSVOA\_W  
 ClientSampleId :  
 2018-NYSEG-CLARK-ST-PH4-AREA

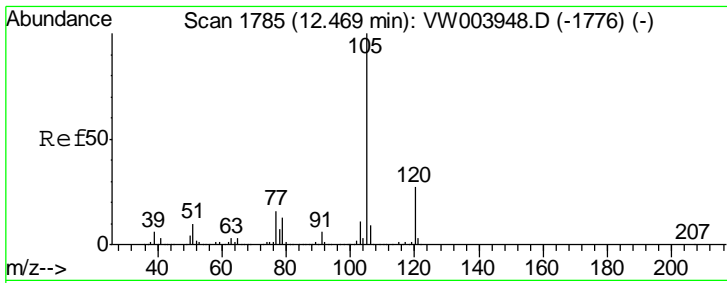
Tgt Ion:106 Resp: 14034  
 Ion Ratio Lower Upper  
 106 100  
 91 226.7 107.5 322.6



#72  
 1,4-Dichlorobenzene-d4  
 Concen: 50.00 ug/l  
 RT: 13.57 min Scan# 1965  
 Delta R.T. 0.00 min  
 Lab File: VW003955.D  
 Acq: 16 Jul 2018 17:05

Tgt Ion:152 Resp: 25013  
 Ion Ratio Lower Upper  
 152 100  
 115 62.1 29.2 87.6  
 150 159.1 0.0 345.2

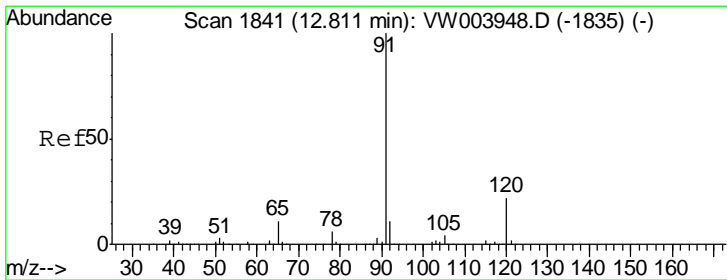
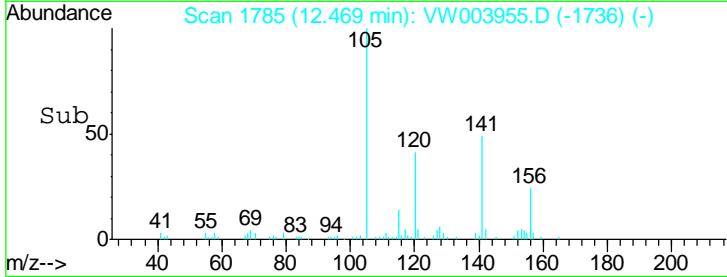
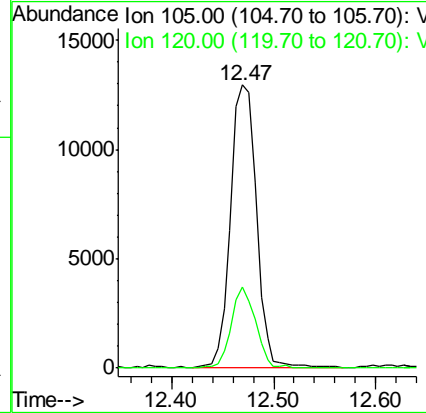
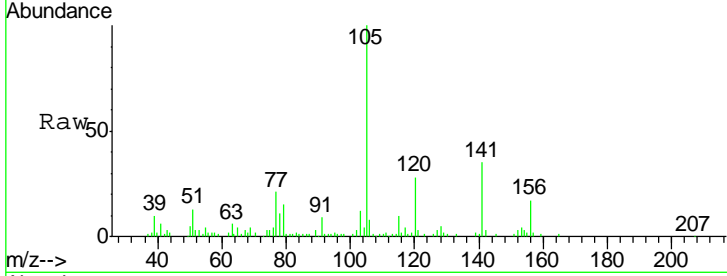




#73  
 Isopropylbenzene  
 Concen: 12.93 ug/l  
 RT: 12.47 min Scan# 1785  
 Delta R.T. 0.00 min  
 Lab File: VW003955.D  
 Acq: 16 Jul 2018 17:05

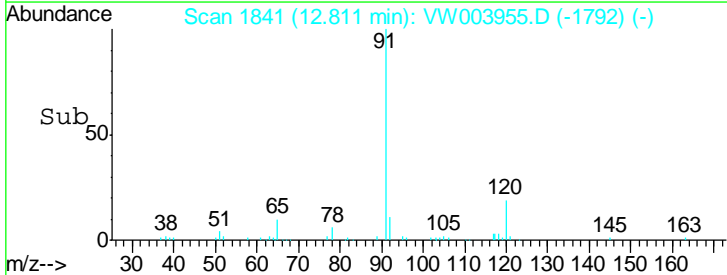
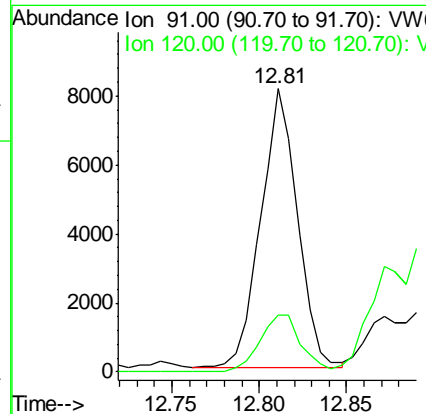
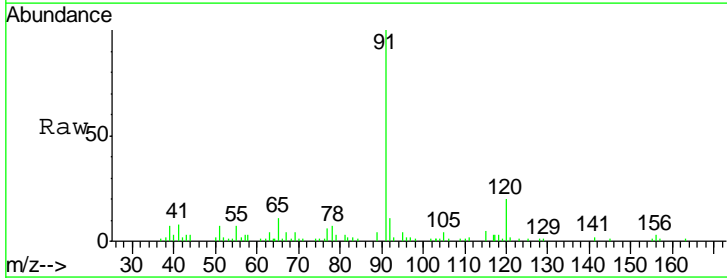
Instrument :  
 MSVOA\_W  
 ClientSampled :  
 2018-NYSEG-CLARK-ST-PH4-AREA

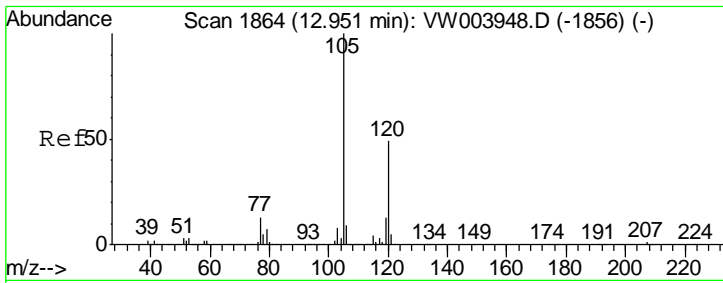
Tgt Ion: 105 Resp: 22851  
 Ion Ratio Lower Upper  
 105 100  
 120 26.7 13.2 39.6



#78  
 n-propylbenzene  
 Concen: 5.42 ug/l  
 RT: 12.81 min Scan# 1841  
 Delta R.T. 0.00 min  
 Lab File: VW003955.D  
 Acq: 16 Jul 2018 17:05

Tgt Ion: 91 Resp: 11742  
 Ion Ratio Lower Upper  
 91 100  
 120 22.9 11.2 33.6

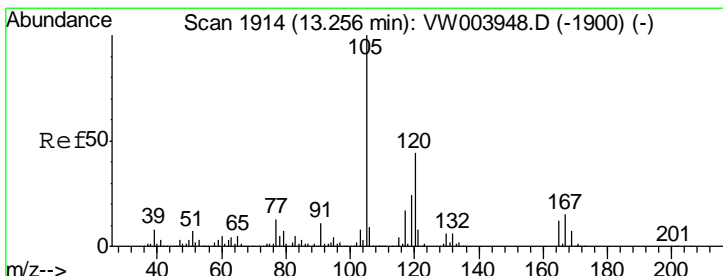
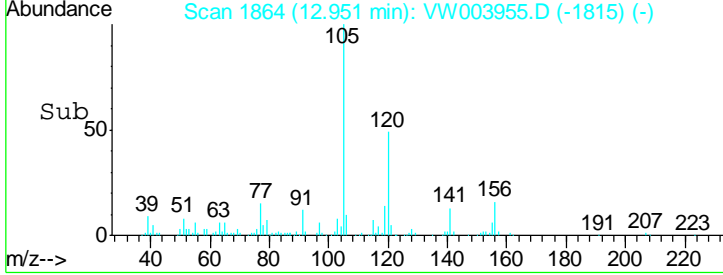
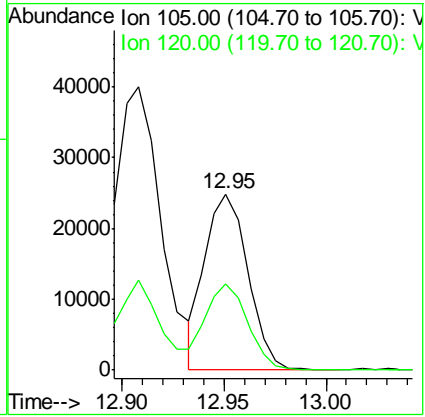
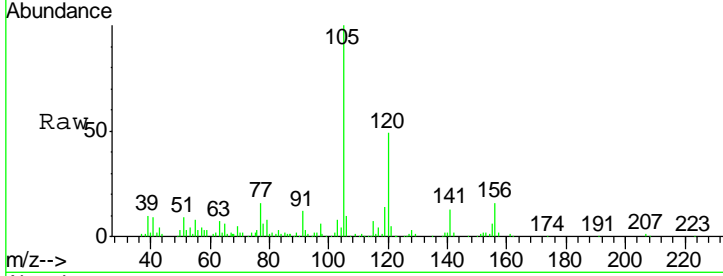




#80  
 1,3,5-Trimethylbenzene  
 Concen: 24.57 ug/l  
 RT: 12.95 min Scan# 1864  
 Delta R.T. 0.00 min  
 Lab File: VW003955.D  
 Acq: 16 Jul 2018 17:05

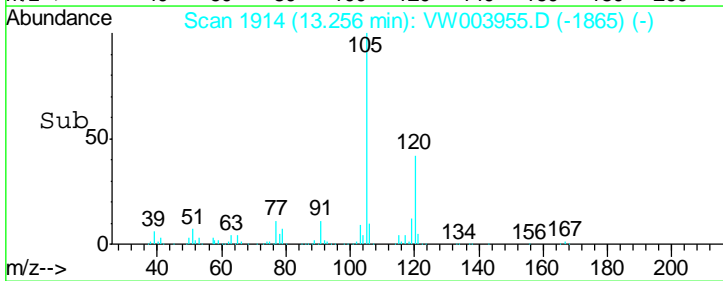
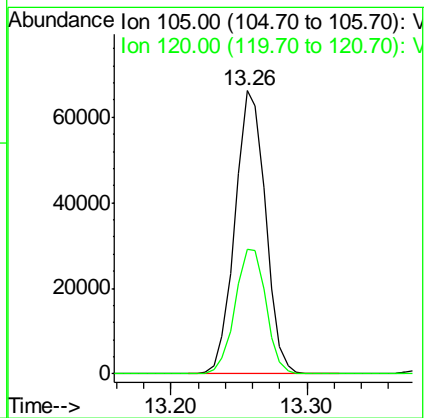
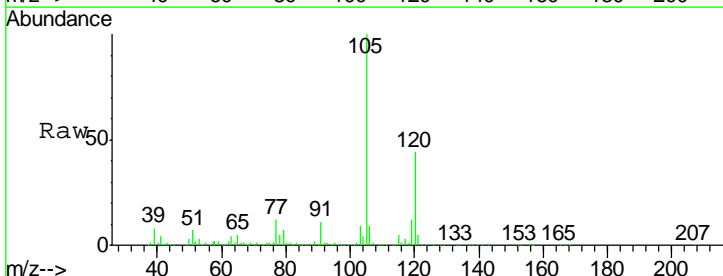
Instrument : MSVOA\_W  
 ClientSampled : 2018-NYSEG-CLARK-ST-PH4-AREA

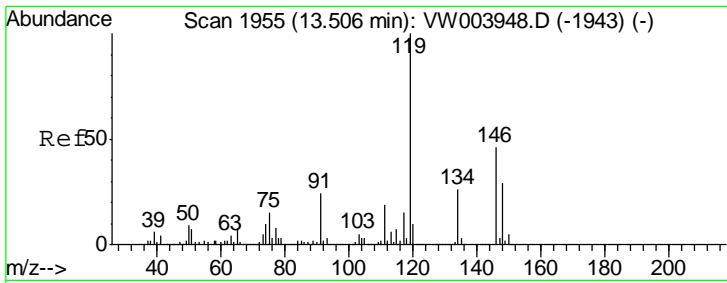
Tgt Ion	Resp	Lower	Upper
105	100		
120	50.9	24.4	73.2



#84  
 1,2,4-Trimethylbenzene  
 Concen: 67.67 ug/l  
 RT: 13.26 min Scan# 1914  
 Delta R.T. 0.00 min  
 Lab File: VW003955.D  
 Acq: 16 Jul 2018 17:05

Tgt Ion	Resp	Lower	Upper
105	100		
120	44.7	22.1	66.1

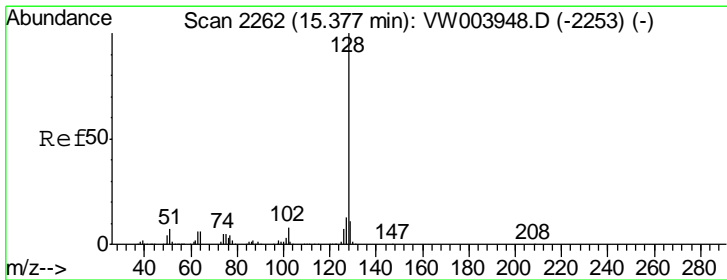
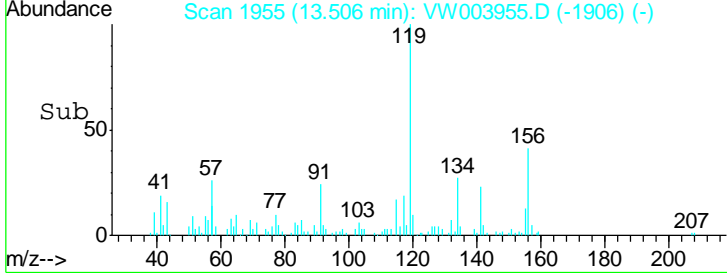
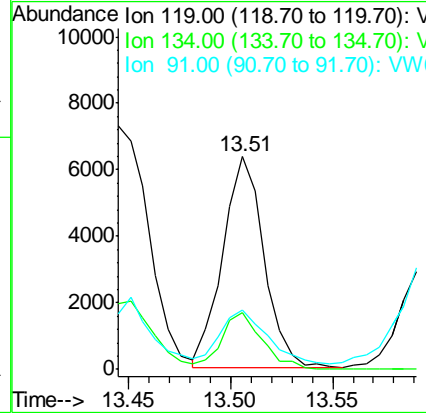
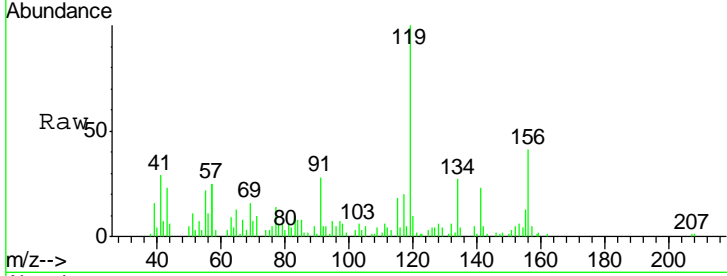




#86  
 p-Isopropyltoluene  
 Concen: 5.46 ug/l  
 RT: 13.51 min Scan# 1955  
 Delta R.T. 0.00 min  
 Lab File: VW003955.D  
 Acq: 16 Jul 2018 17:05

Instrument : MSVOA\_W  
 ClientSampleId : 2018-NYSEG-CLARK-ST-PH4-AREA

Tgt Ion	Resp	Lower	Upper
119	100		
134	26.5	13.0	38.9
91	29.3	11.8	35.3



#95  
 Naphthalene  
 Concen: 258.41 ug/l  
 RT: 15.38 min Scan# 2262  
 Delta R.T. 0.00 min  
 Lab File: VW003955.D  
 Acq: 16 Jul 2018 17:05

Tgt Ion	Resp	Lower	Upper
128	100		
127	13.2	10.7	16.1
129	11.1	8.7	13.1

